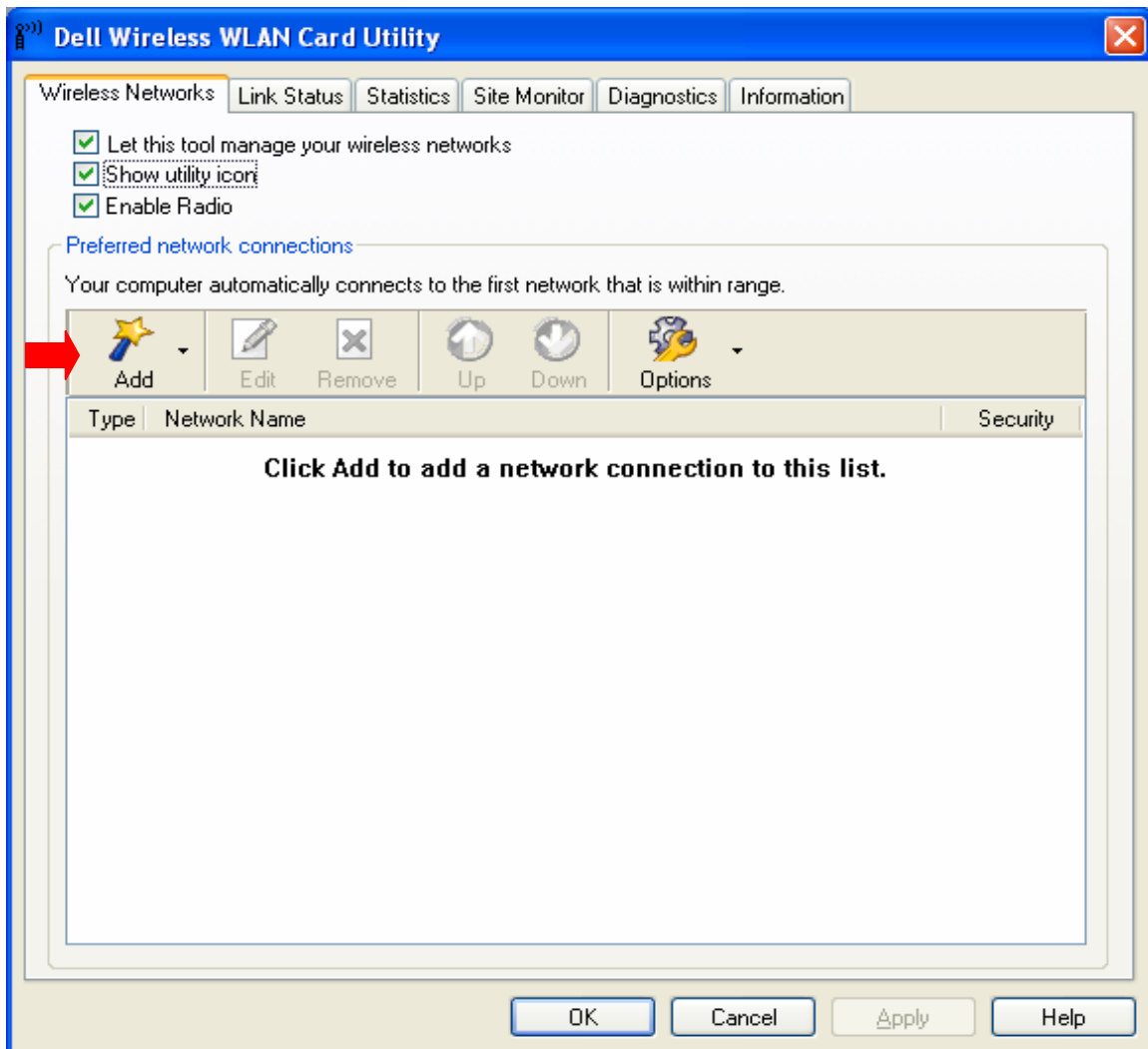




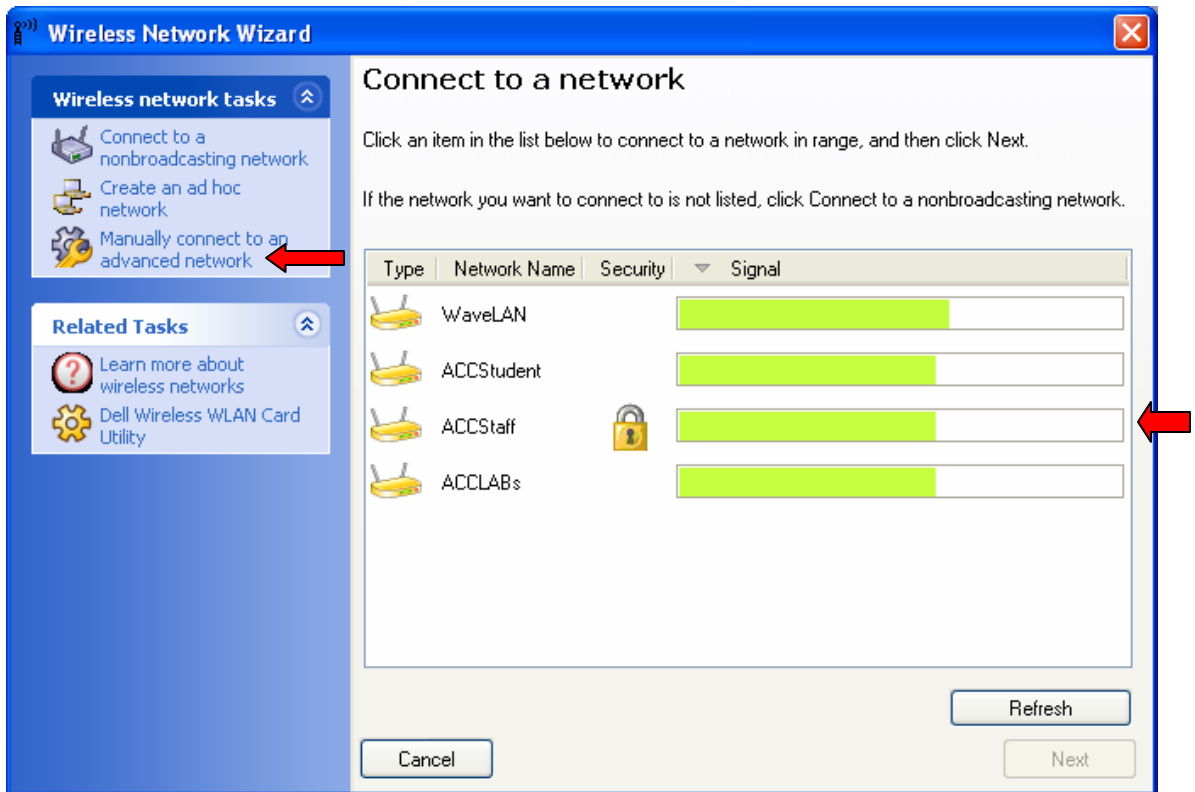
Before using these instructions to connect to the Austin Community College Staff wireless network you must first obtain your ACCeID login. To create your ACCeID please visit the following link. <http://www.austincc.edu/acceid/>

These instructions assume you are using an ACC issued Dell laptop with Windows XP and the pre-installed Dell wireless client. Other brands of laptops and wireless clients will work, however the actual steps may vary with your setup.

1. Click on Start/All Programs/Dell Wireless/Dell Wireless WLAN card utility. Choose the Wireless Networks tab and you should see the following screen.



2. Click on the Add button and you should see the following screen. Notice that the utility has automatically picked up wireless networks in range of your laptop. Highlight ACCStaff and choose “Manually connect to an advanced network”. If the wireless networks were not automatically detected that is ok, still choose “Manually connect to an advanced network”.



3. Now you will need to enter the information exactly as it appears below.
Network name (SSID): ACCStaff
Network authentication: WPA-Enterprise
EAP method: LEAP
Make sure the Prompt for user name and password box is checked.
Now click on “OK”.

**Note, regardless of what brand of laptop or wireless client you are using, these are the settings that need to be correct for you to connect.

Wireless Network Connection Settings

Network name (SSID): ACCStaff Select...

This is an ad hoc network Channel: 11

Network authentication: WPA-Enterprise

EAP method

LEAP Inner EAP method: - NONE -

Network Key User Name/Password Client Identity Server Identity Options

Prompt for user name and password

Use Windows user name and password

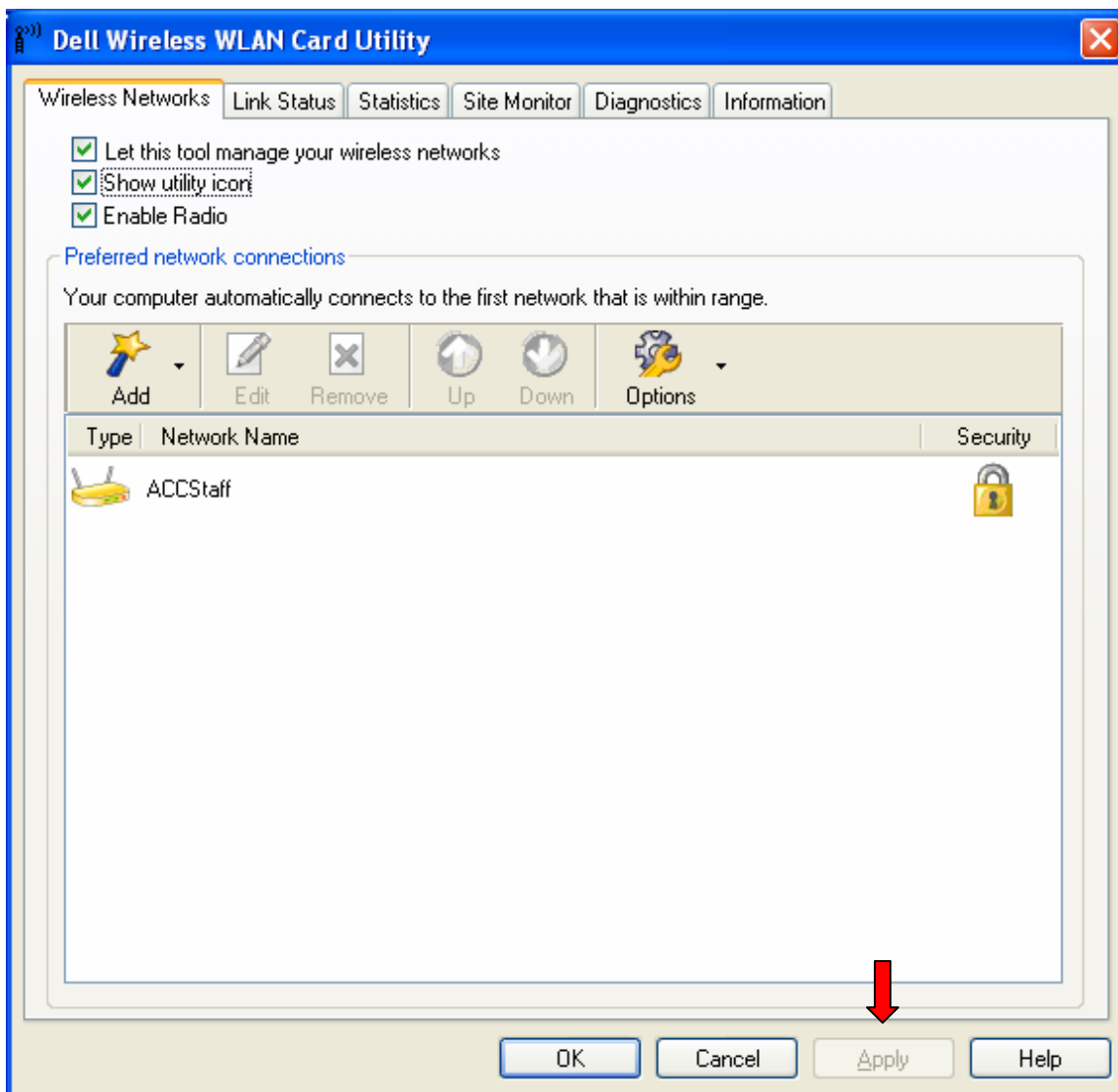
Include Windows domain

Domain\User Name: Password: Confirm password:

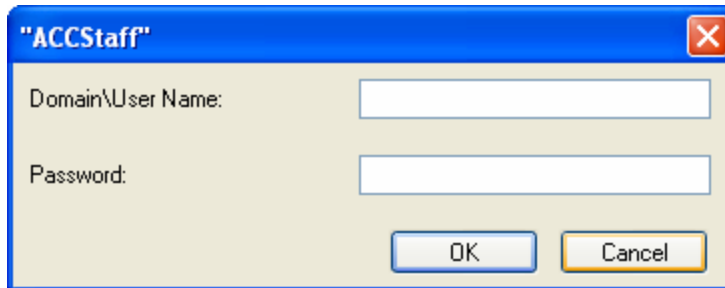
Hide characters as I type

OK Cancel Help

4. Once you click on OK you should now see the following screen with the ACCStaff listed as a network. Click the Apply button at the bottom of the window. Once you do that the client should prompt you for your ACCeID information which is shown in step 5.



5. Enter your ACCeID username and password. Then Click OK.

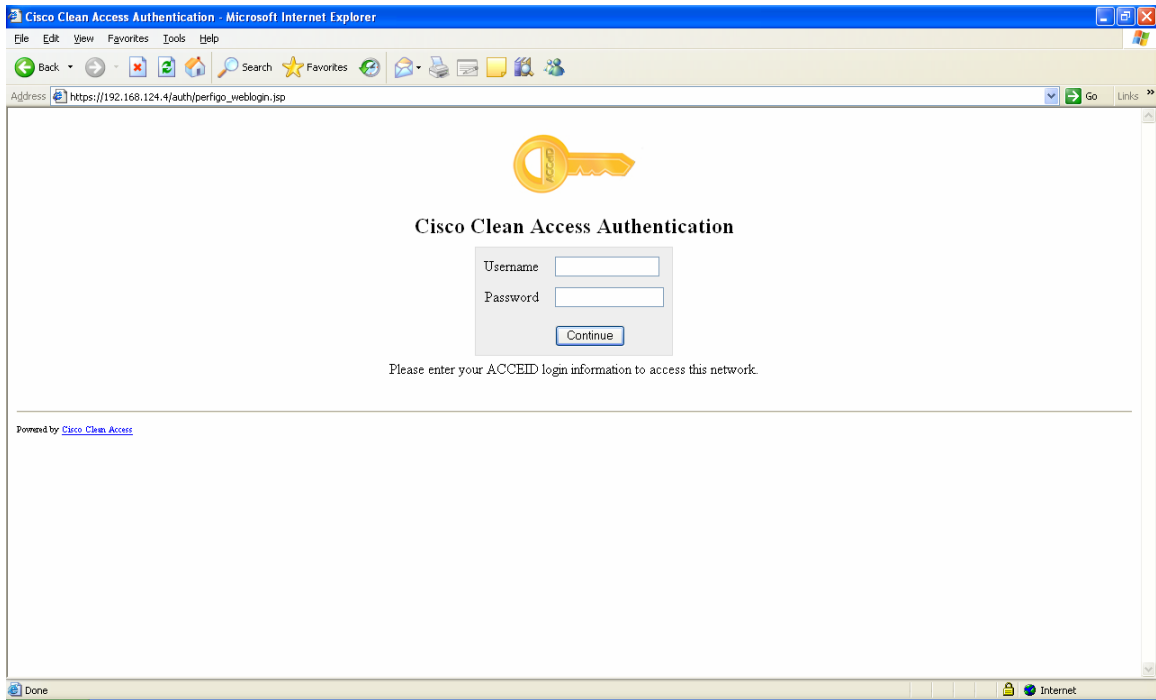


The image shows a Windows-style dialog box titled "ACCStaff". It has a blue title bar with a close button (X) in the top right corner. The main area is light beige and contains two text input fields. The first field is labeled "Domain\User Name:" and the second is labeled "Password:". Below the fields are two buttons: "OK" and "Cancel".

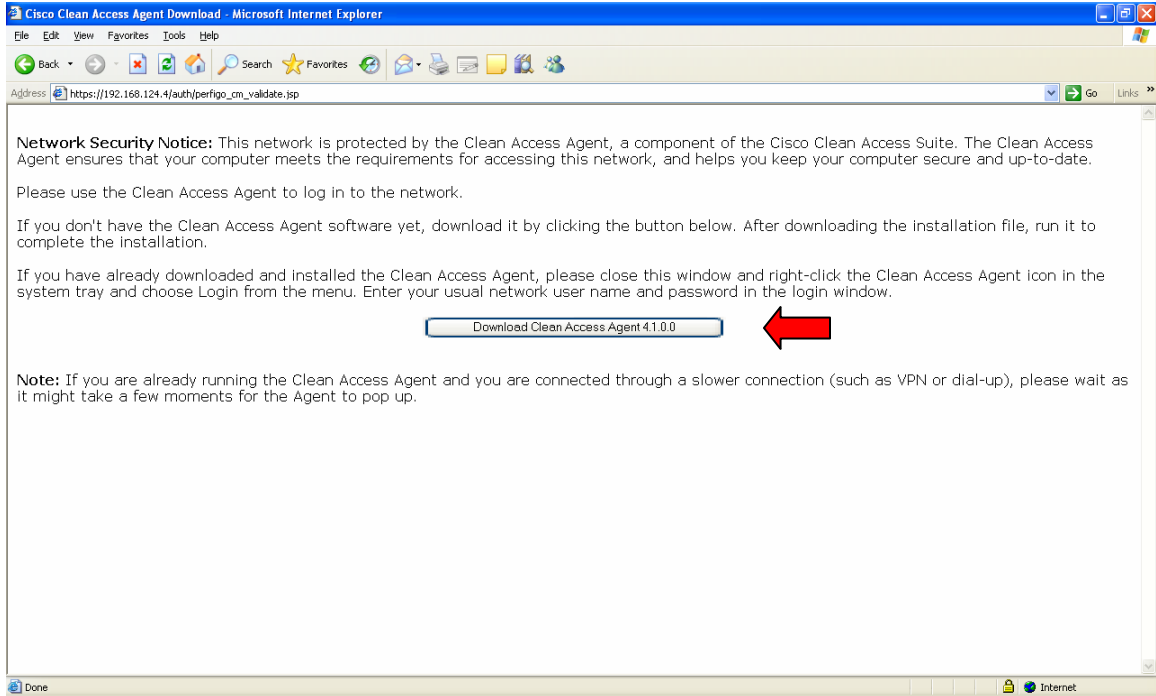
6. Observe the bottom right hand corner of your screen. Once you are connected you should see the picture below.



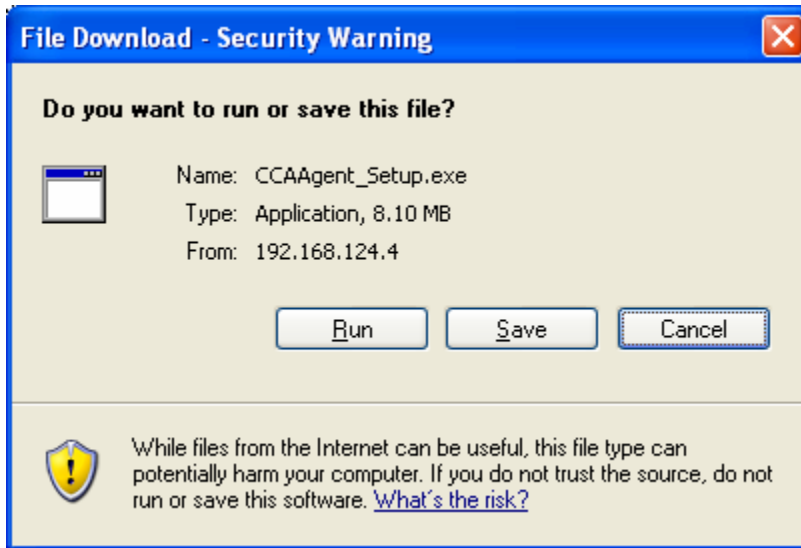
7. At this point you are connected to the Wireless access point. In order to connect to the network you must install the Cisco Clean Access Agent. This will allow for a quick scan to be performed ensuring your laptop meets requirements to join the ACCStaff network. To begin, open Internet Explorer (or Firefox). It should look like the screen below. **You may receive two different Security alert dialogs. Just click OK and yes to the Security alert for the site certificate.**



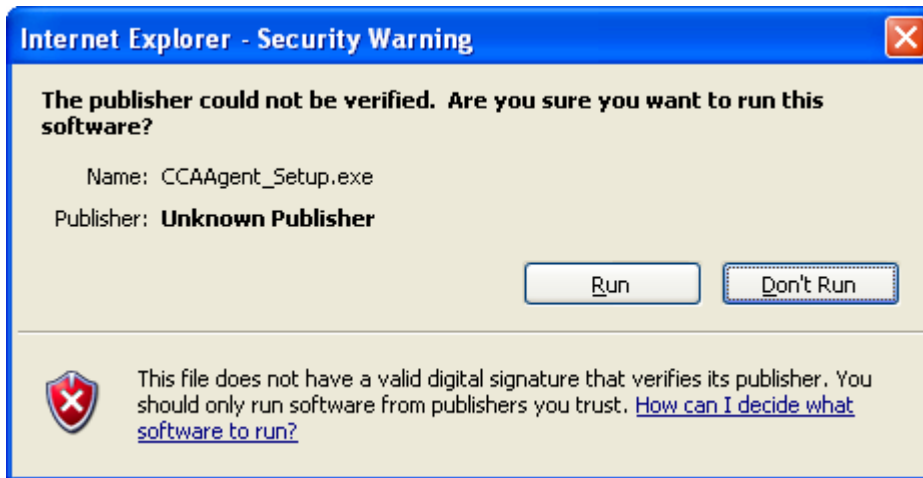
8. Enter your ACCeID username and password and click continue. When you see the following screen click the “Download Clean Access Agent 4.1.0.0” and click yes on the security alert when it appears.



9. When the file download box appears click “Run”.



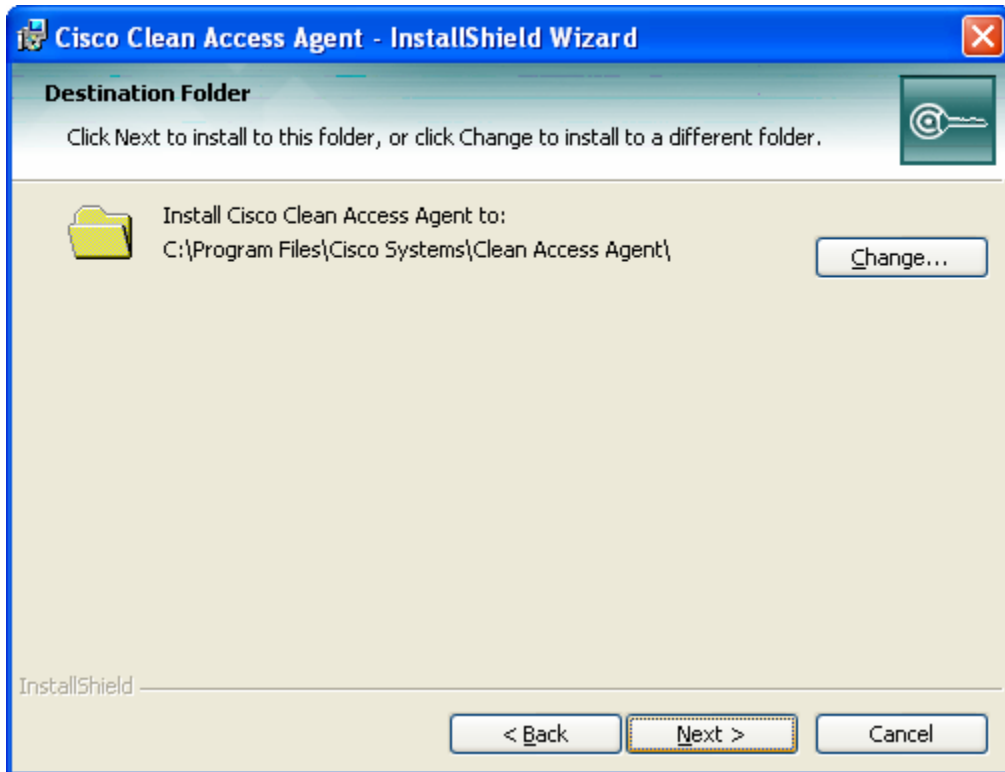
10. When the security warning appears click Run again.



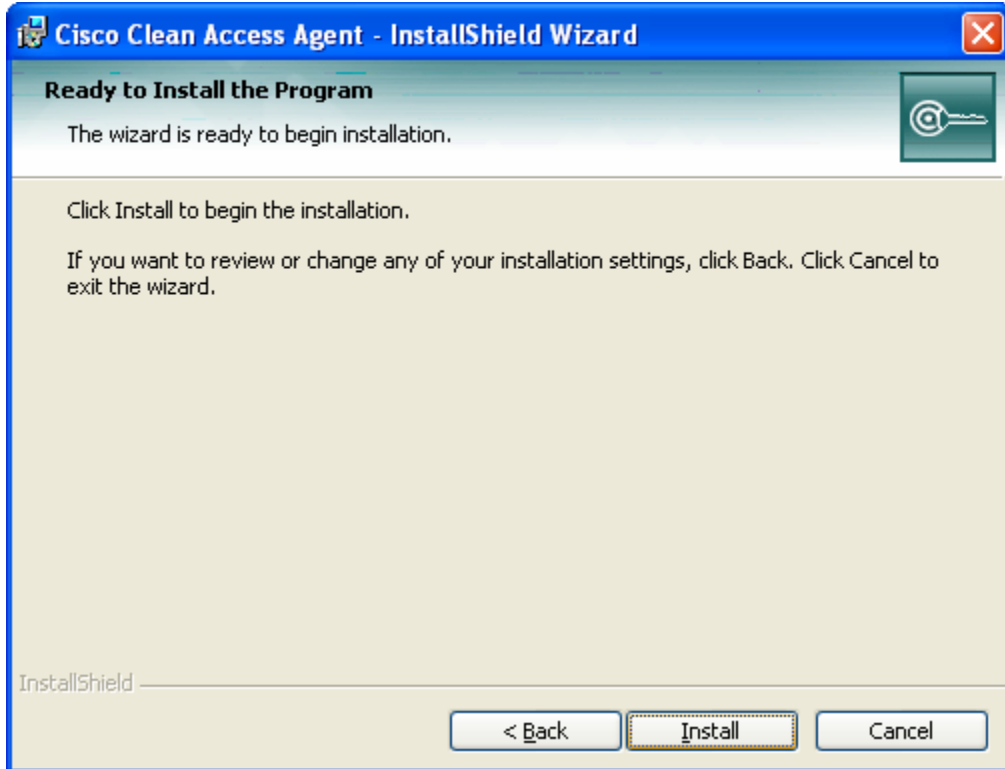
11. Click Next.



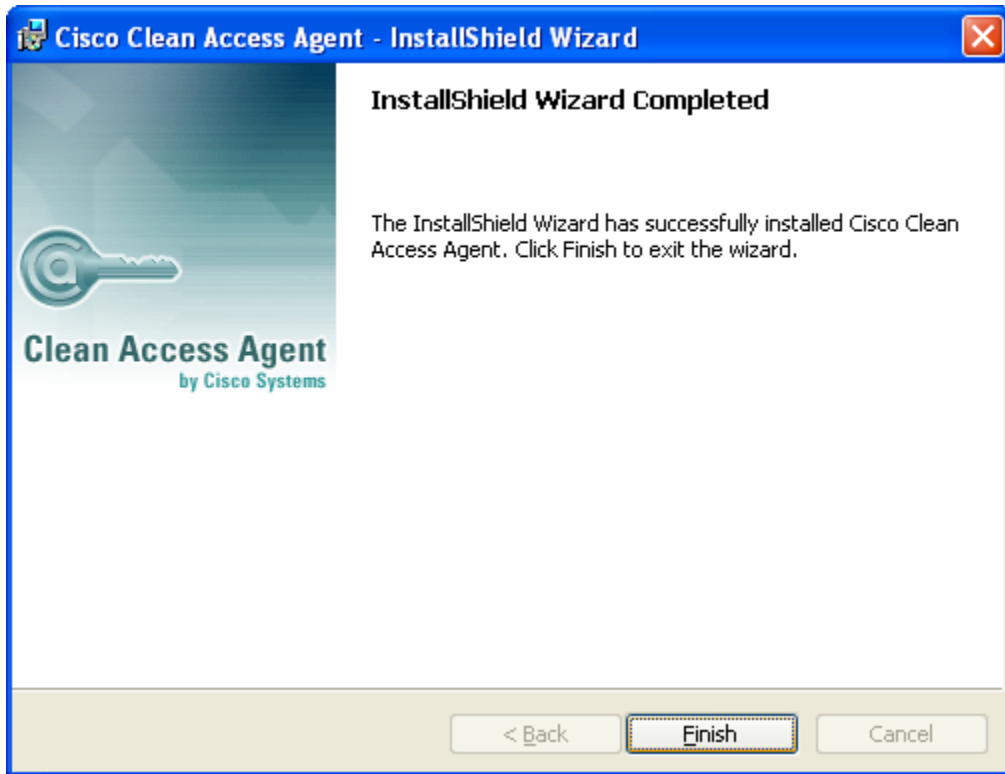
12. Click Next.



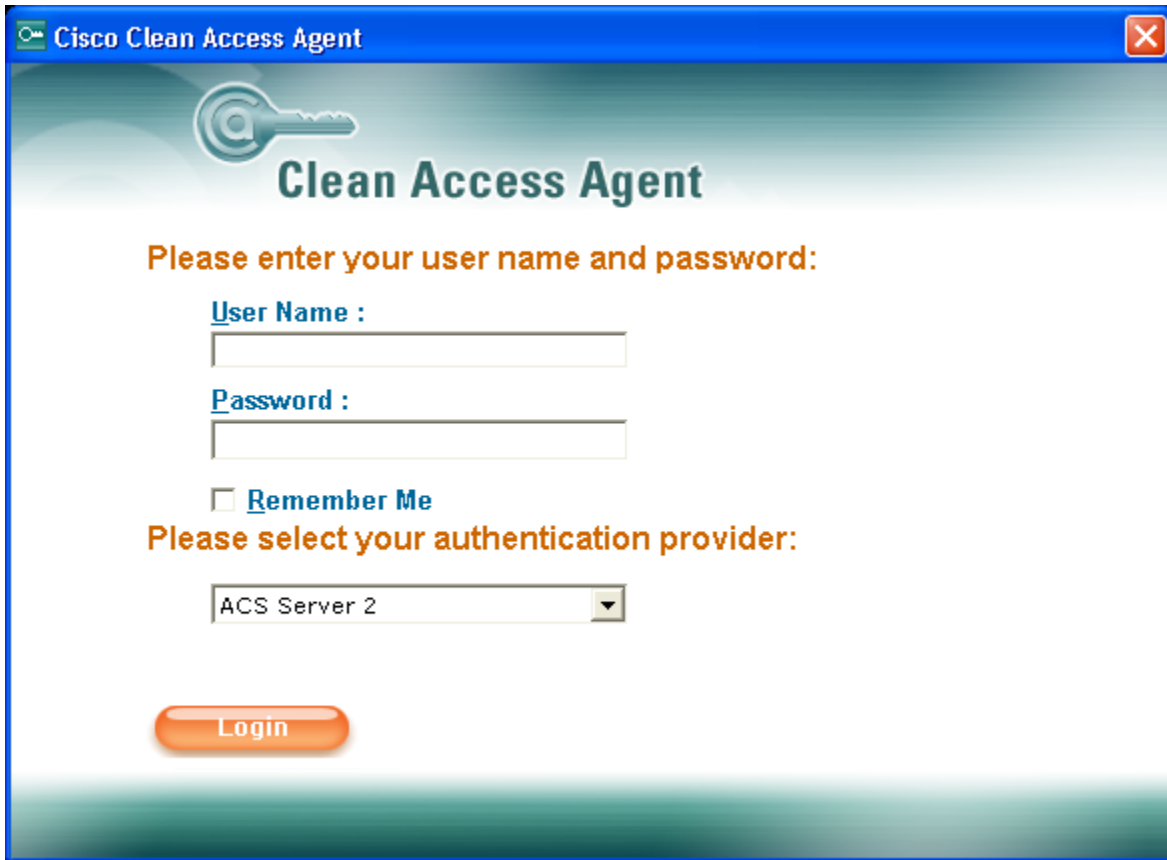
13. Click Install.



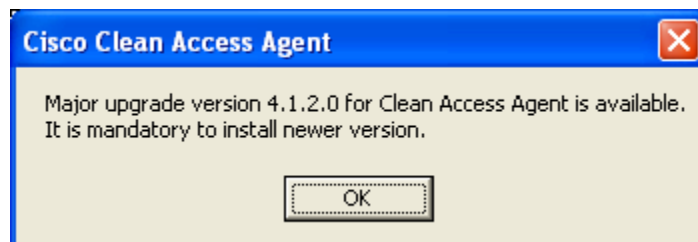
14. Click Finish.



15. The clean access agent should open automatically. If it does not go to Start/Programs/Cisco Systems/Cisco Clean Access/Clean Access Agent. Enter your ACCeID information and click the Login button.



16. The following patch will need to be installed, simply follow the prompts to install the patch. It should install quickly.



17. Once again enter your ACCeID information. You may see some security prompts, simply click yes.

18. At this point you should see the following screen.



18. You should now be logged in to the ACCStaff Network. If you do not have updated anti-virus software on your laptop you will have to install it or follow the prompts to update it.