



Before using these instructions to connect to the Austin Community College Wireless Network you must first obtain your ACCeID login. To create your ACCeID please visit the following link.



<http://www.austincc.edu/acceid/>

You can visit this link from any ACC Library Computer lab or from your home connection if one is available.

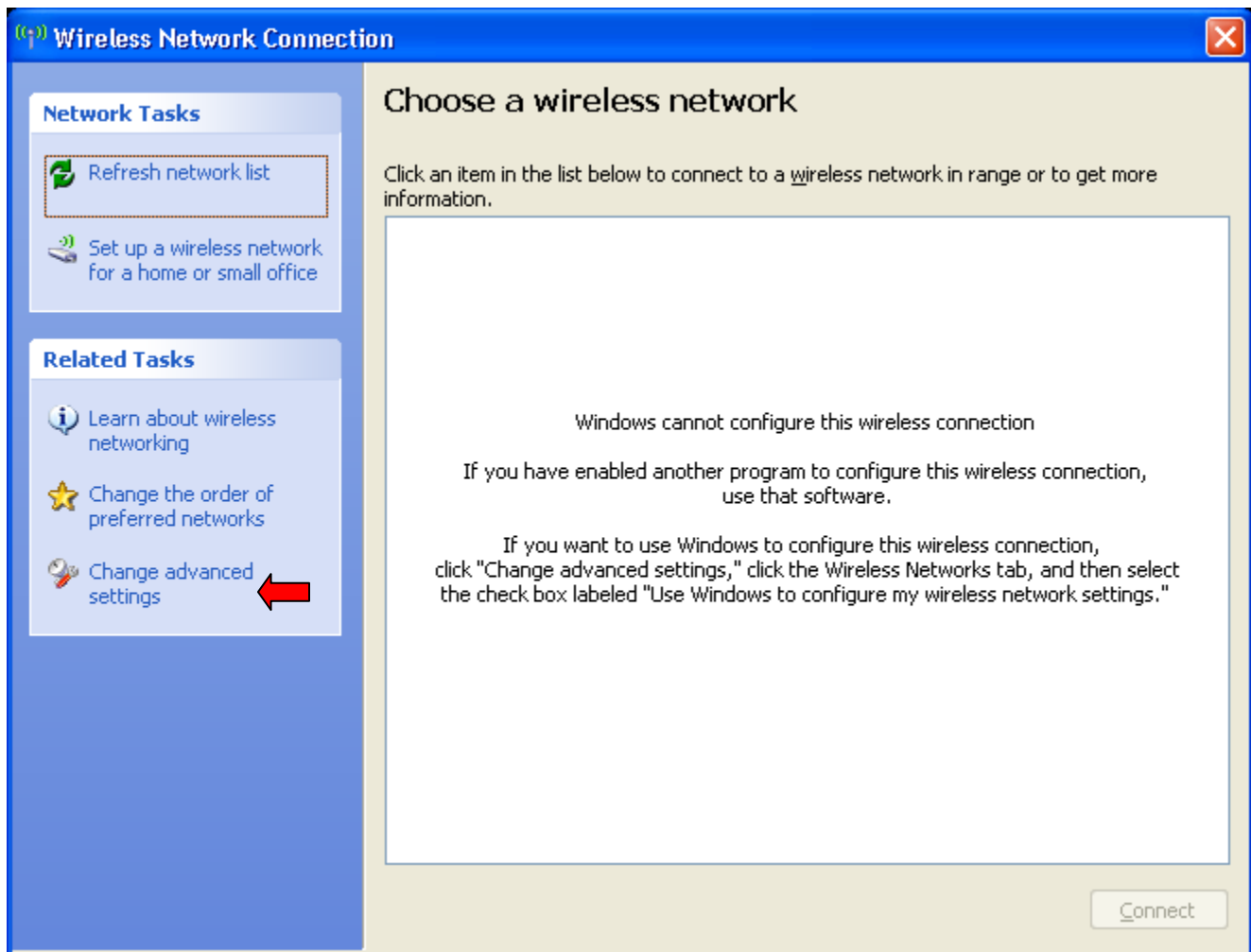
These instructions assume you have a Laptop with wireless capability. If you are not sure, please contact the manufacturer of your Laptop or refer to the documentation that came with it. This example uses Windows XP. Windows 2000 and Vista users should expect slight differences in the setup; however the actual settings will remain the same.

In order to connect to the Austin Community College Wireless Network you must first follow these instructions.

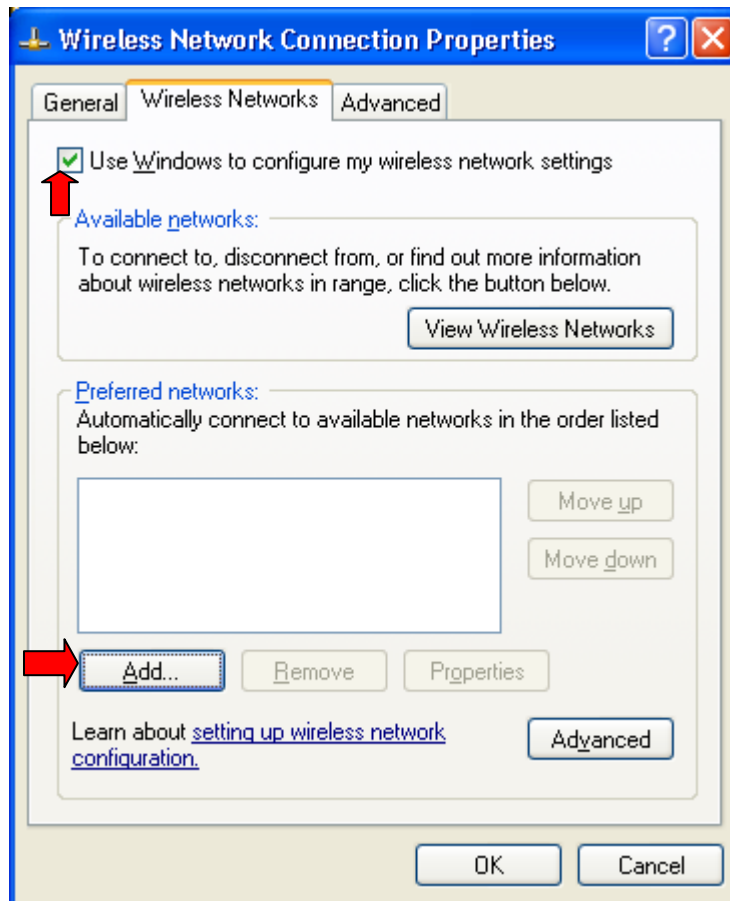
1. First click on the wireless icon located in the bottom right hand corner of your screen. If there is NOT a red X located on the icon, it is possible that you are already connected. You can open Internet Explorer to check this.



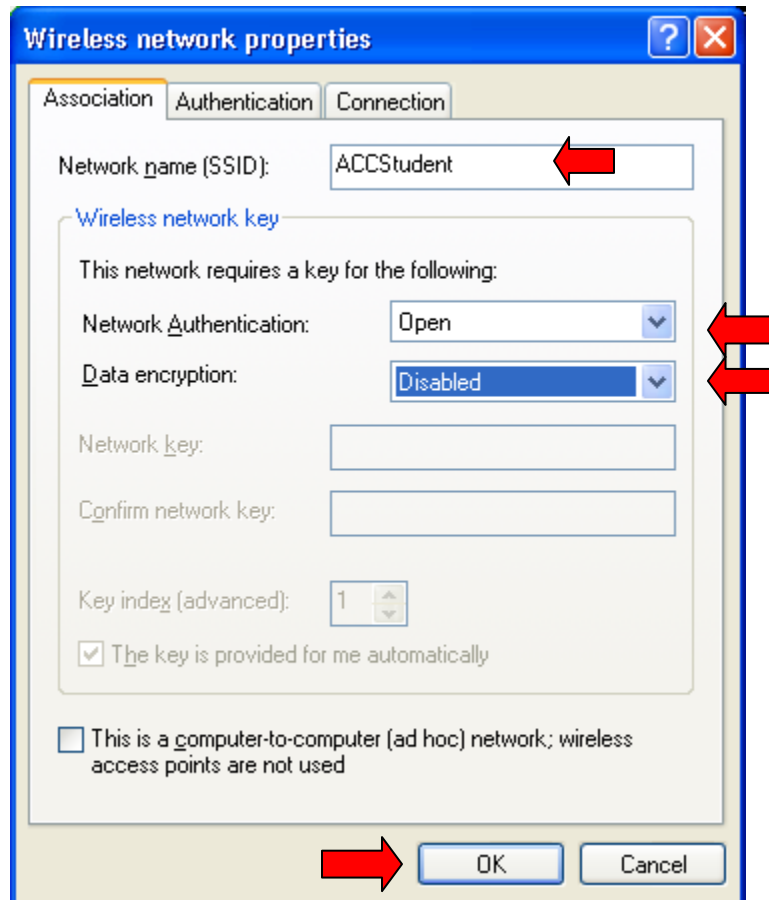
2. Once you click on the wireless icon you should see the following window.  
Click on "Change advanced settings"



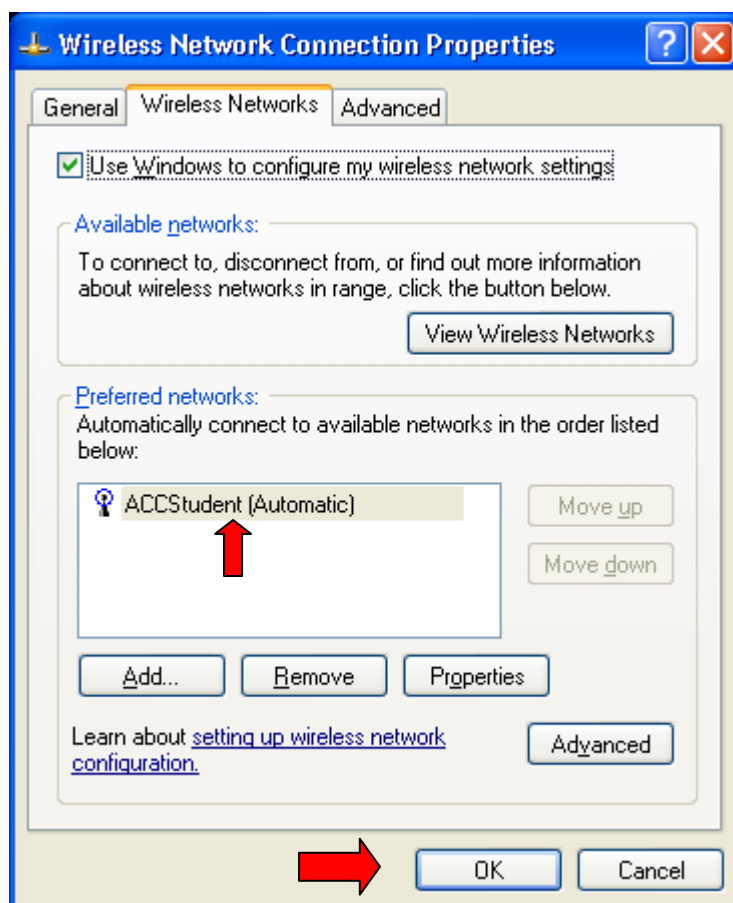
3. Choose the “Wireless Networks” tab.  
Check the “Use Windows to configure my wireless network setting” box.  
Next click the add button.



- Under the “Association” tab you will change the following settings.  
Network name (SSID): ACCStudent  
Network Authentication: Open  
Data encryption: Disabled  
Click OK



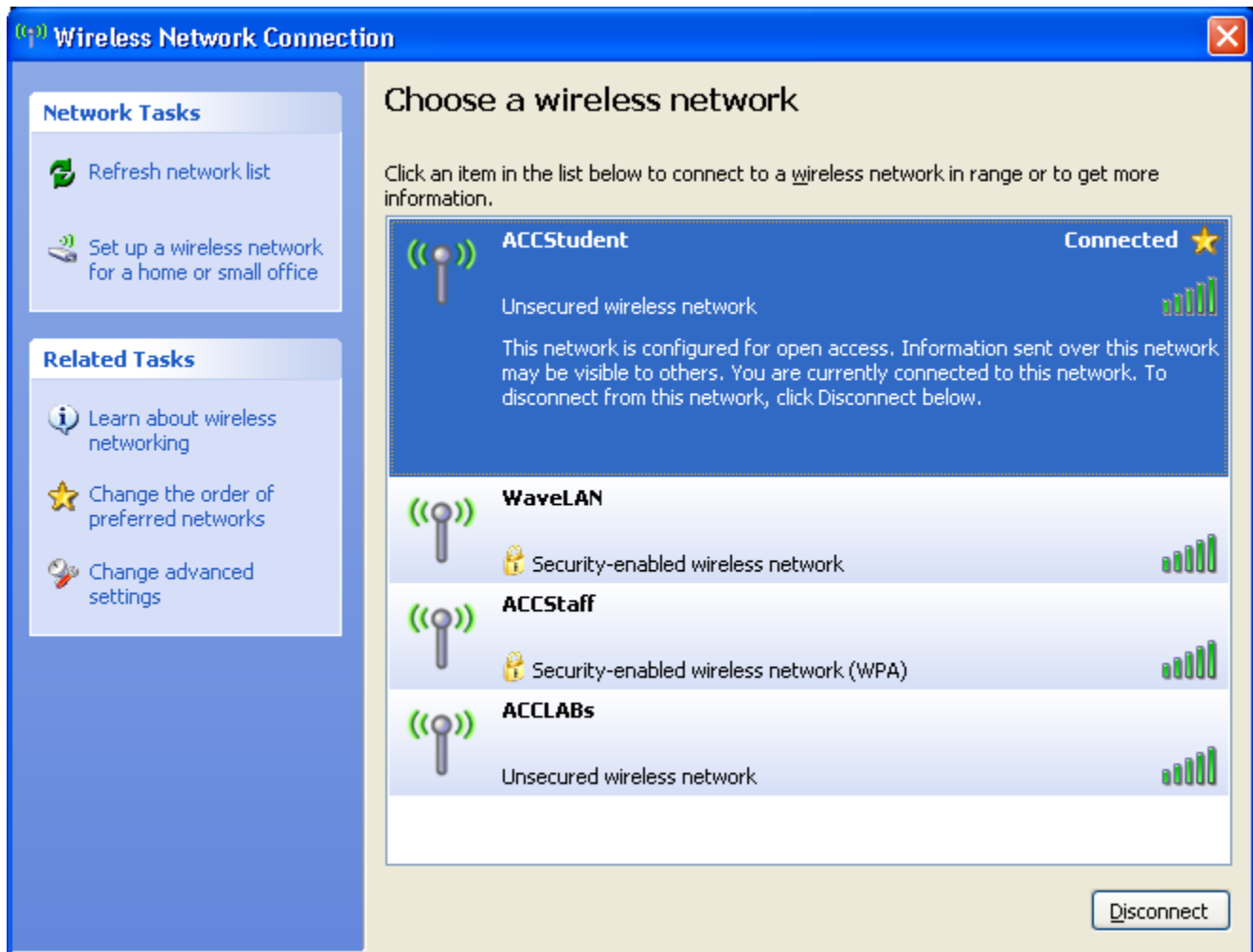
5. Now click OK on your Wireless Network Connection Properties window. (You should see ACCStudent listed in the “Preferred networks”).



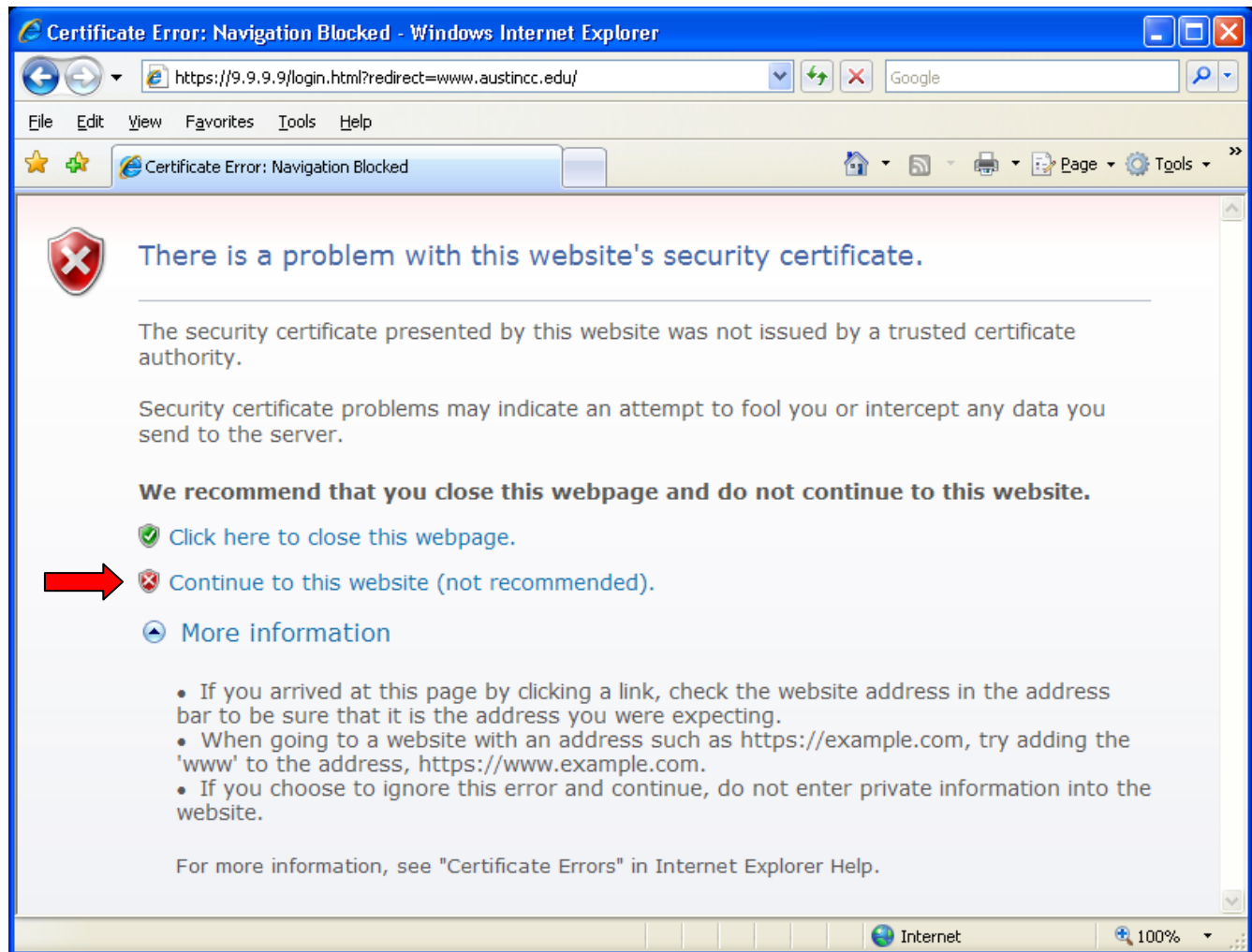
6. At this point Windows should automatically detect and connect to the ACC student wireless. If not click on the wireless icon located in the bottom right of your screen and click on it.



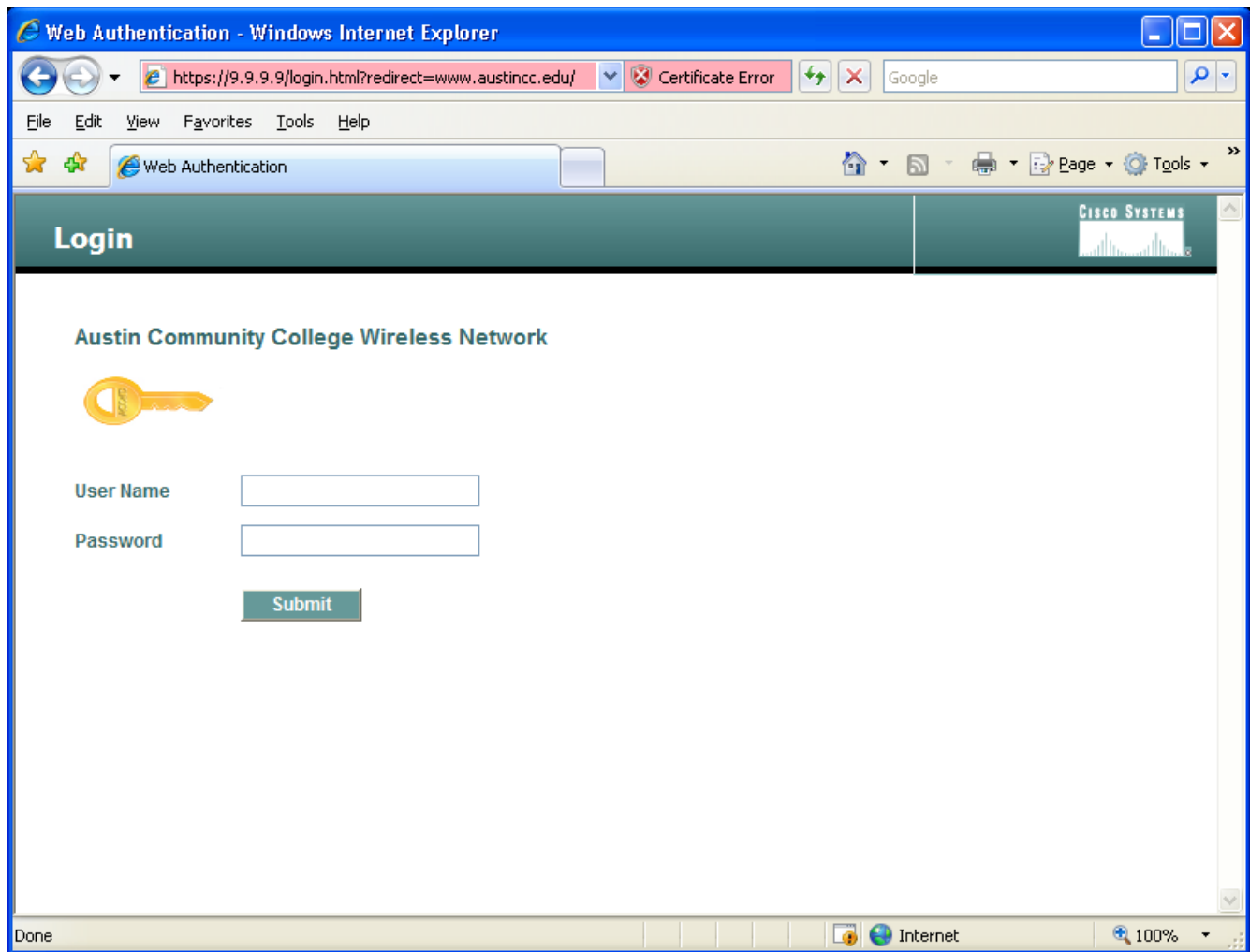
7. Click on “View Wireless Networks” and you should see the screen shown below. If ACCStudent is not listed as “Connected” simply highlight it and click the connect button at the bottom right of the window.



8. From here you will need to open Internet Explorer (or which ever browser you prefer, for this example I am using Internet Explorer). You may encounter the following screen when opening Internet Explorer. If so just click on the link “Continue to this website”
- \*\*ACC’s Wireless Network has been tested with Internet Explorer and Mozilla Firefox. All other browsers may or may not work with the login screen.



9. Next you should see the following login screen on your browser. For more information on obtaining your ACC wireless login information you will need to visit the following link.  
<http://www.austincc.edu/acceid/>



These instructions can be used to have Windows XP manage your wireless connections. In many cases you can simply use the wireless software that came pre-installed with your laptop. If you use any other wireless software just make sure you have these settings entered correctly:

SSID: ACCStudent

Network Authentication: open

Data encryption: disabled

Our ACC wireless network is based on wireless local area networks ("WLANs") that use evolving technology based on the IEEE 802.11b/g standards. WLANs, which enable "over-the-air" communications, may be subject to unauthorized interception and are not inherently secure. We therefore cannot guarantee the privacy of your data and communications while using the ACC wireless service.