

MML Orientation.

Do not print this document. It is long and you don't really need it later. This is just a "prop" to help you feel comfortable understanding what you need to see in the Orientation in the MML software.

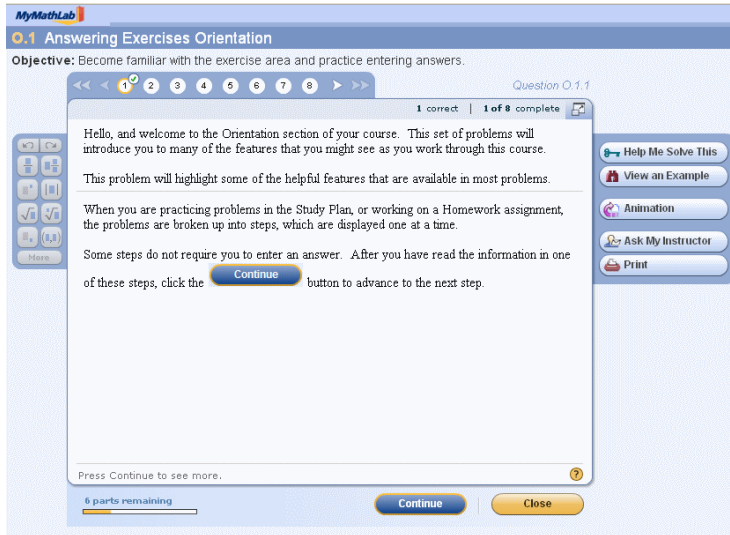
In the main page of your course, click on "Videos and Textbook" in the upper left corner. That leads you to a page like this.

The screenshot shows the Pearson CourseCompass interface. At the top, the Pearson logo and 'CourseCompass' are visible. Below that, a breadcrumb trail reads: COURSES > MATD 0330 - BASIC MATH SKILLS - MML, FALL... > CONTROL PANEL > VIDEOS & TEXTBOOK. The main heading is 'Videos & Textbook'. A toolbar contains icons for 'Add', 'Item', 'Folder', 'External Link', 'Course Link', 'Test', and 'TestG'. A 'Documents' section is highlighted with a yellow border and contains four items: 'How do I enter answers?' (with a calculator icon), 'MyMathLab Student Help' (with a question mark icon), 'Math Tutor Center' (with a 'Tutor Center' logo), and 'Text & Software Information' (with the 'MyMathLab' logo). Below this, a 'Calendar and Due Dates' section contains a paragraph: 'The calendar and due dates for all material in the course are found in the website for the c semester. Please review that each week to notice what you must be working on that wee'. A third section, 'MyMathLab Orientation Questions', contains a paragraph: 'Work through [orientation questions](#) to learn how to enter answers, use the math p'.

Choose the very last link shown here, beside number 3, called "orientation questions." That leads you to a page that has something like this.

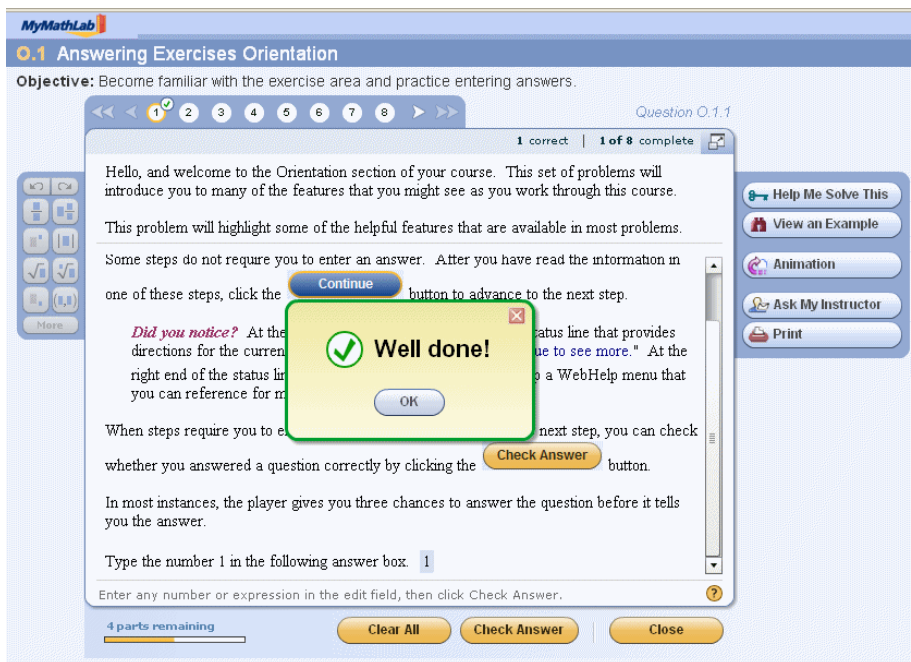
The screenshot shows the 'Study Plan' page. At the top, it says 'Study Plan' and 'Gmail - Inbox (144) - mary.r'. Below that, it lists 'CHAPTER 0: Orientation Questions for St' and 'Section 0.1: Answering Exercises Orient.'. There are two buttons: 'Show All' and 'Show What I Need to Study'. Below the buttons, it says 'All Objectives'. A yellow box shows 'Time Spent: 13m 26s'. Below that, there are three links: 'Question 0.1.1' (with a green checkmark and a purple icon), 'Question 0.1.4', and 'Question 0.1.7'.

Yours won't have a check by the first item yet. (I made this picture after I had already done much of it.) So click on the first item, Question 0.1.1. You'll see something like this.



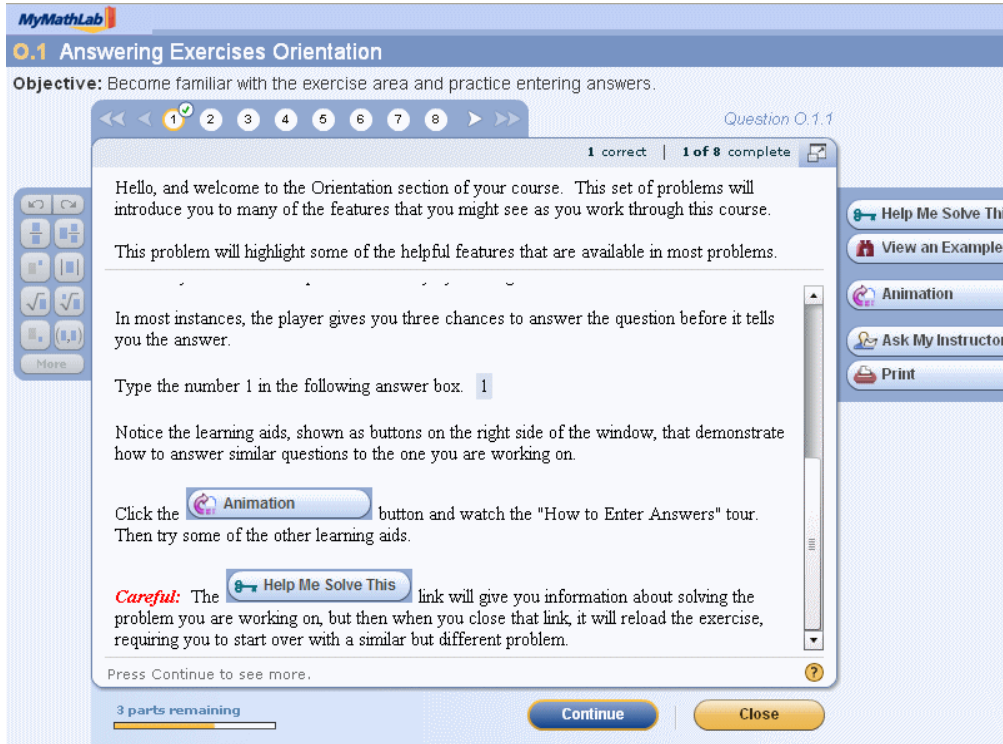
Go through this and follow each of the directions. You don't need to take notes or make a serious effort to remember everything. The point is just to make you feel familiar with the software and comfortable enough to work with it without getting frustrated.

At one point along the way, you're asked to enter the number 1 into an answer box, and when you do it, you get a nice pop-up window to tell you that you're correct.

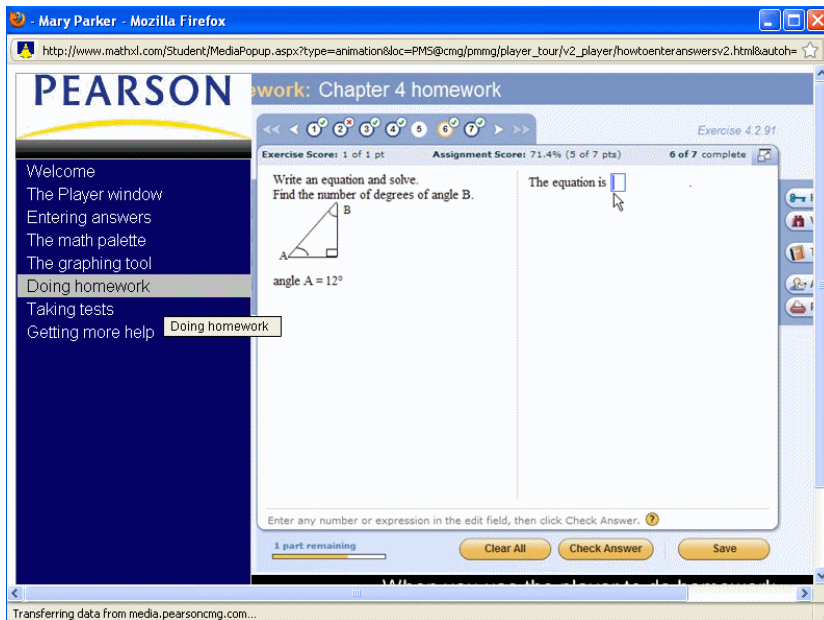


So you need to click on OK in the box, right under "Well done!" in order to go on.

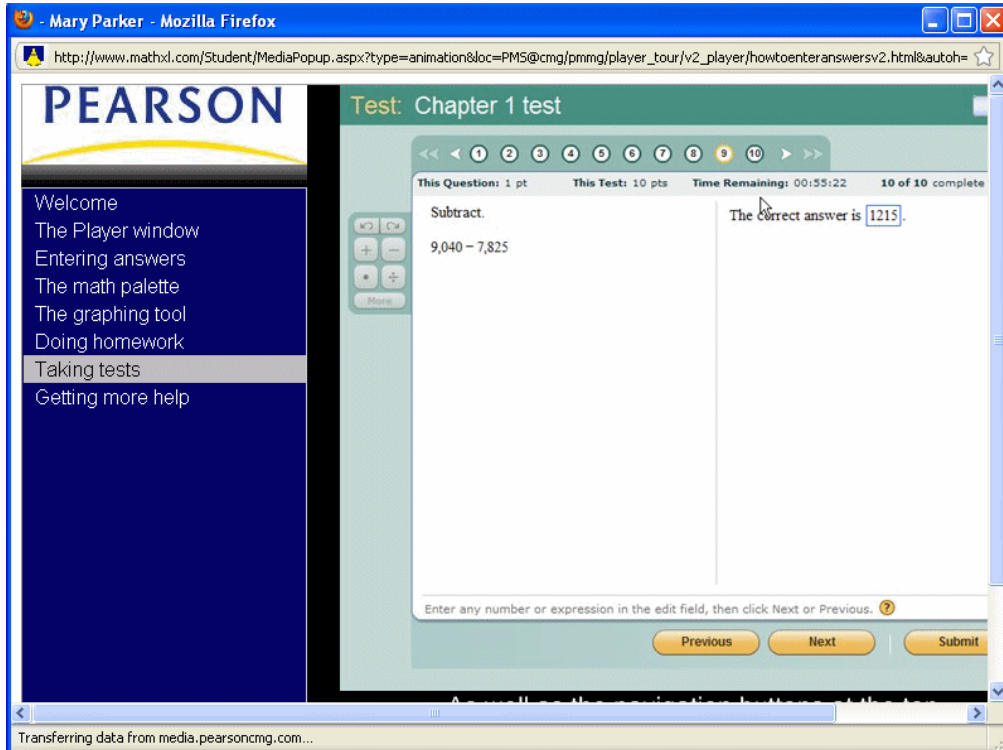
Immediately after this, you are told to choose the “Animation” button. (That means the “Animation” button on the right-hand menu.) This is VERY important.



When you click on the “Animation” button in the right menu, it leads you to an animation that is about 15 minutes long and VERY useful. Be sure that you have the audio turned on so that you can hear the talking. It leads you through all the things in the left-hand menu here. (You don’t need “graphing tool” but you do need all the others here.)



The part called “Taking Tests” is relevant to you because you will be taking Quizzes in the software, even though the main tests in the course are done by hand.



After you have finished all of this animation, then you will go back to the main Orientation screen, and go through the rest of the pages. This shows what you’ll see on screen 2. Go through all the screens.

