

# Effectiveness Update

## Student Retention Effectiveness Measures Report for Academic Year 2004-05



### PURPOSE

To provide consistent, campus-wide programs and services that increase the likelihood that students will remain in college and complete their degree or certificate program.

### INTENDED OUTCOME

1A. First Time in College (FTIC) degree-seeking students enrolled at ACC in the fall semester will return the following spring semester (Fall-to-Spring Retention Rate).

### CRITERION

Based on data provided by the THECB, the percentage of FTIC degree-seeking students enrolled in the fall semester who return the following spring semester will be higher than the state average.

### RESULTS

This criterion was not met. Although, the retention rate for fall first time in college students (FTIC) is increasing each year, the percentage of ACC fall FTIC students who return in the spring is below the percentage of fall FTIC students returning in the spring statewide.

### DATA

#### First Time in College (FTIC) Cohort Fall-to-Spring Retention

	FTIC Fall 2001 Cohort			FTIC Fall 2002 Cohort			Difference from Previous Year
	Fall 2001	Spring 2002	% Returned	Fall 2002	Spring 2003	% Returned	
ACC Total FTIC Students	5,843	3,680	63%	6,760	4,451	66%	+3%
Statewide Total FTIC Students	119,789	83,515	70%	118,689	84,215	71%	+1%
<b>Difference</b>	<b>-7%</b>			<b>-5%</b>			
ACC Academic Majors	4,046	2,565	63%	4,065	2,728	67%	+4%
Statewide Academic Majors	76,149	54,873	72%	72,870	53,316	73%	+1%
<b>Difference</b>	<b>-9%</b>			<b>-6%</b>			
ACC Technical Majors	1,281	776	61%	1,986	1,250	63%	+2%
Statewide Technical Majors	30,096	22,925	65%	34,888	23,155	66%	+1%
<b>Difference</b>	<b>-4%</b>			<b>-3%</b>			

Source: THECB Annual Data Profiles, Institutional and Statewide Summaries, 2003 and 2004, Table 4



**Student Retention Effectiveness Measures Report 2004-05** (continued)

**INTENDED OUTCOME**

1B. There will be no significant differences between ACC and statewide average Fall-to-Spring retention rates for FTIC degree- or certificate-seeking students by demographic group.

**CRITERION**

Based on data from the THECB Annual Data Profile, for each demographic group, the percentage of FTIC students enrolled in the fall semester who return the following spring semester will be within  $\pm 5\%$  of their proportion statewide.

**RESULTS**

This criterion was not met. Fall to spring retention rates for all 2002 FTIC students were greater than for the 2001 FTIC cohort in all groups, with Hispanic students demonstrating the most increase. However, none of the groups' fall to spring return rates were higher than the statewide rates.

**DATA**

First Time in College (FTIC) Cohort Fall-to-Spring Retention by Ethnicity

Students	FTIC Fall 2001 Cohort			FTIC Fall 2002 Cohort			Change from Previous Year
	Fall 2001	Spring 2002	% Returned	Fall 2002	Spring 2003	% Returned	
ACC White Students	3,467	2,190	63%	3,957	2,603	66%	+3%
Statewide White Students	64,718	45,197	70%	62,012	43,983	71%	+1%
<b>Criterion</b>	<b>Below range (67%-74%)</b>			<b>Below range (67%-75%)</b>			
ACC Black Students	389	219	56%	456	264	58%	+2%
Statewide Black Students	12,750	8,201	64%	12,853	8,535	66%	+2%
<b>Criterion</b>	<b>Below range (61%-67%)</b>			<b>Below range (63%-69%)</b>			
ACC Hispanic Students	1,311	813	62%	1,521	1007	66%	+4%
Statewide Hispanic Students	33,473	23,971	72%	35,106	25,602	73%	+1%
<b>Criterion</b>	<b>Below range (68%-76%)</b>			<b>Below range (69%-77%)</b>			
ACC Other* Students	676	458	68%	826	577	70%	+2%
Statewide Other* Students	8,848	6,146	69%	8,718	6,095	70%	+1%
<b>Criterion</b>	<b>Below range (66%-72%)</b>			<b>Below range (67%-74%)</b>			

Source: THECB Annual Data Profiles, Institutional and Statewide Summaries, 2002 and 2001

\*Other includes Native American, Asian, International, and Unknown

**Student Retention Effectiveness Measures Report 2004-05** (continued)

**INTENDED OUTCOME**

2A. Students enrolled at ACC in the fall semester will return the following fall semester (Fall-to-Fall Retention Rate).

**CRITERION**

Based on the THECB Retention Report, the percentage of all ACC students enrolled in the fall semester who return the following fall semester will be higher than the state average.

**RESULTS**

This criterion was not met. ACC's fall-to-fall retention rate was within two percent of the statewide rate, but was not higher than the statewide rate. The number of Fall 2002 ACC students majoring in technical programs who returned in Fall 2003, however, was two percent greater than the statewide rate for technical majors.

**DATA**

Fall-to-Fall Retention Rate Comparison:  
ACC Students with Statewide Summary

	Fall 2001 Students			Fall 2002 Students			
	Students Enrolled Fall 2001	Students Returning Fall 2002	% Returned	Students Enrolled Fall 2002	Students Returning Fall 2003	% Returned	Change from Previous Year
ACC Total Students	27,577	10,318	37%	29,156	11,036	38%	+1%
Statewide Total Students	467,238	179,556	38%	505,000	191,543	38%	0%
<b>Difference</b>	<b>-1%</b>			<b>0%</b>			
ACC Academic Majors	18,217	6,593	36%	18,011	6,676	37%	+1%
Statewide Academic Majors	279,080	105,435	38%	301,032	113,198	38%	0%
<b>Difference</b>	<b>-2%</b>			<b>-1%</b>			
ACC Technical Majors	6,922	2,695	39%	8,377	3,230	39%	0%
Statewide Technical Majors	142,909	55,328	39%	149,123	55,833	37%	-2%
<b>Difference</b>	<b>0%</b>			<b>+2%</b>			

Source: THECB Student Retention Report, 2001-02 and 2002-03

**Student Retention Effectiveness Measures Report 2004-05** (continued)

**INTENDED OUTCOME**

2B. There will be no significant differences between ACC and statewide average Fall-to-Fall retention rates by demographic group.

**CRITERION**

Based on data from the *THECB Student Retention\* Report*, for each demographic group, the percent of ACC students enrolled in the fall semester who return the following fall semester will be within  $\pm 5\%$  of their proportion statewide .

**RESULTS**

This criterion was met. The fall-to-fall return rates for each demographic group were within  $\pm 5\%$  of their proportion statewide, with the exception of Black students. The return rate for Black students was above their proportion statewide.

**DATA**

Comparison of ACC and statewide Fall-to-Fall Retention Rates by Ethnicity

	Fall 2001	Fall 2002	% Returned	Fall 2002	Fall 2003	% Returned	Difference from Previous Year
ACC White Students	17,141	6,111	36%	17,688	6,451	36%	0%
Statewide White Students	243,685	88,669	36%	258,453	92,951	36%	0%
Criterion	<b>Within range ( 34% - 38%)</b>			<b>Within range ( 34% - 38%)</b>			
ACC Black Students	1,820	703	39%	1,923	766	40%	+1%
Statewide Black Students	51,648	18,292	35%	55,941	19,145	34%	-1%
Criterion	<b>Above range (33% - 37%)</b>			<b>Above range (32% - 36%)</b>			
ACC Hispanic Students	5,842	2,462	42%	6,297	2,630	42%	0%
Statewide Hispanic Students	136,796	59,341	43%	150,183	64,371	43%	0%
Criterion	<b>Within range ( 41% - 45.2%)</b>			<b>Within range ( 41% - 45%)</b>			
ACC Other Students	2,774	1,042	38%	3,248	1,189	37%	-1%
Statewide Other Students	35,109	13,281	38%	40,423	15,076	37%	-1%
Criterion	<b>Within range ( 36% - 40%)</b>			<b>Within range ( 35% - 39%)</b>			

Source: *THECB Student Retention Reports for 2001-2002 and 2002-2003*

\*Other includes Native American, Asian, International, and Unknown

**Student Retention Effectiveness Measures Report 2004-05** (continued)

**INTENDED OUTCOME**

3A. FTIC degree-seeking students will complete their degree or certificate within three years (Completions).

**CRITERION**

Based on data provided by the THECB (in the Annual Data Profile), the three year completion rates of FTIC degree-seeking students will be at least 5% higher than the state average.

**RESULTS**

This criterion was not met. The three-year completion rates for ACC students were five per cent below statewide completion rates.

**DATA**

**First Time in College (FTIC) Cohort Completion Rates**

	FTIC Fall 1999 Cohort as of 2001 - 2002			FTIC Fall 2000 Cohort as of 2002 - 2003			Change from Previous Year
	FTIC Headcount	Graduated within 3 years	Completion Rate	FTIC Headcount	Graduated within 3 years	Completion Rate	
ACC Total FTIC Students	7,767	236	3.0%	4,984	129	2.5%	-0.5%
Statewide Total FTIC Students	111,112	9,279	8.3%	113,104	9,272	8.1%	-0.2%
<b>Difference</b>			<b>-5.3%</b>			<b>-5.6%</b>	
ACC Academic Majors	5,630	123	2.1%	3,385	56	1.6%	-0.5%
Statewide Academic Majors	66,109	4,047	6.1%	69,173	4,033	5.8%	-0.3%
<b>Difference</b>			<b>-4.0%</b>			<b>-4.2%</b>	
ACC Technical Majors	2,137	113	5.2%	1,599	73	4.5%	-0.7%
Statewide Technical Majors	45,003	5,232	11.6%	43,931	5,239	11.9%	+0.3%
<b>Difference</b>			<b>-6.4%</b>			<b>-7.4%</b>	

Source: THECB Annual Data Profiles, Institutional and Statewide Summaries, 2002 and 2001

## Student Retention Effectiveness Measures Report 2004-05 (continued)

### **INTENDED OUTCOME**

3B. There will be no significant difference between ACC and statewide degree or certificate completion rates of FTIC students by demographic group.

### **CRITERION**

3. Based on data provided by the THECB, for each demographic group, the percentage of FTIC students who complete a degree or certificate will be within  $\pm 5\%$  of their proportion statewide.

### **RESULTS**

This criterion was not met. Completion rates for ACC's Fall 1999 and Fall 2000 FTIC students ranged from a low of almost two percent for Black students to a high of just over three percent for White and Other\* students. Statewide the range was from almost six percent to almost nine percent for the same time period. Additionally, ACC's completion rates are falling slightly (by less than one percent) for each demographic group except Black students whose completion rate increased by almost one percent over the previous cohort's rate.

### **DATA**

FTIC Cohort Completion Rates by Ethnicity

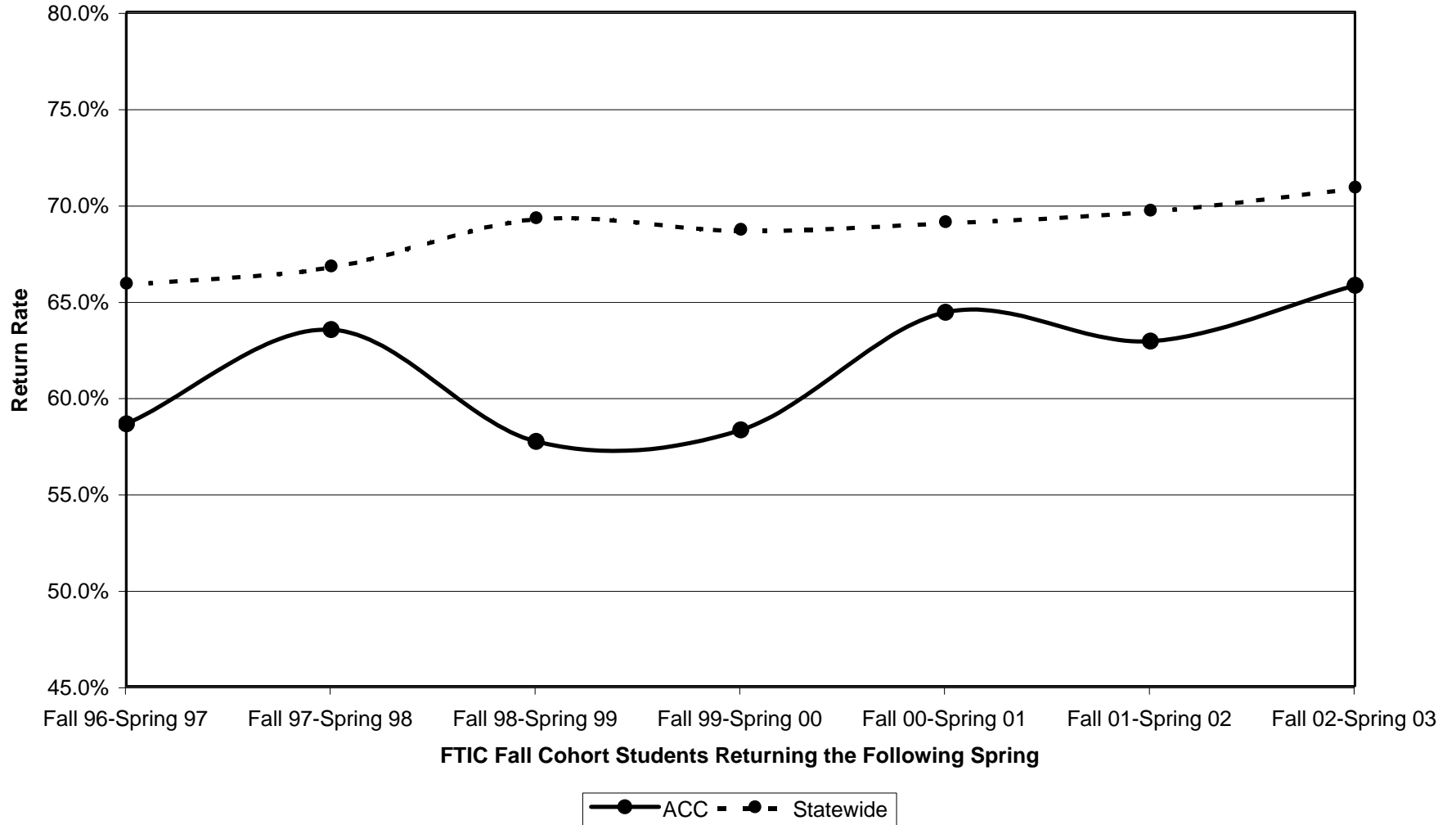
Students	FTIC Fall 1999 Cohort as of 2001-2002			FTIC Fall 2000 Cohort as of 2002-2003			Change from Previous Year
	FTIC Head- count	Graduated Within 3 years	Completion Rate	FTIC Head- count	Graduated Within 3 years	Completion Rate	
ACC White Students	5,166	170	3.2%	2,997	77	2.5%	-0.7%
Statewide White Students	62,778	5,524	8.7%	62,263	5,324	8.5%	-0.2%
<b>Criterion</b>	<b>Below range (8.3%-9.1%)</b>			<b>Below range (8.1%-8.9%)</b>			
ACC Black Students	462	9	1.9%	323	9	2.7%	+0.8%
Statewide Black Students	11,695	928	7.9%	11,973	987	8.5%	+0.6%
<b>Criterion</b>	<b>Below range (7.5%-8.3%)</b>			<b>Below range (8.1%-8.9%)</b>			
ACC Hispanic Students	1,518	37	2.4%	1,044	24	2.2%	-0.2%
Statewide Hispanic Students	29,832	2,396	8.0%	30,800	2,478	8.0%	0%
<b>Criterion</b>	<b>Below range (7.6%-8.4%)</b>			<b>Below range (7.6%-8.4%)</b>			
ACC Other* Students	621	20	3.2%	620	19	3.0%	-0.2%
Statewide Other* Students	6,338	431	6.8%	8,068	483	5.9%	-0.9%
<b>Criterion</b>	<b>Below range (6.5%-7.1%)</b>			<b>Below range (5.6%-6.2%)</b>			

Source: THECB *Annual Data Profile, 2002 and 2001*

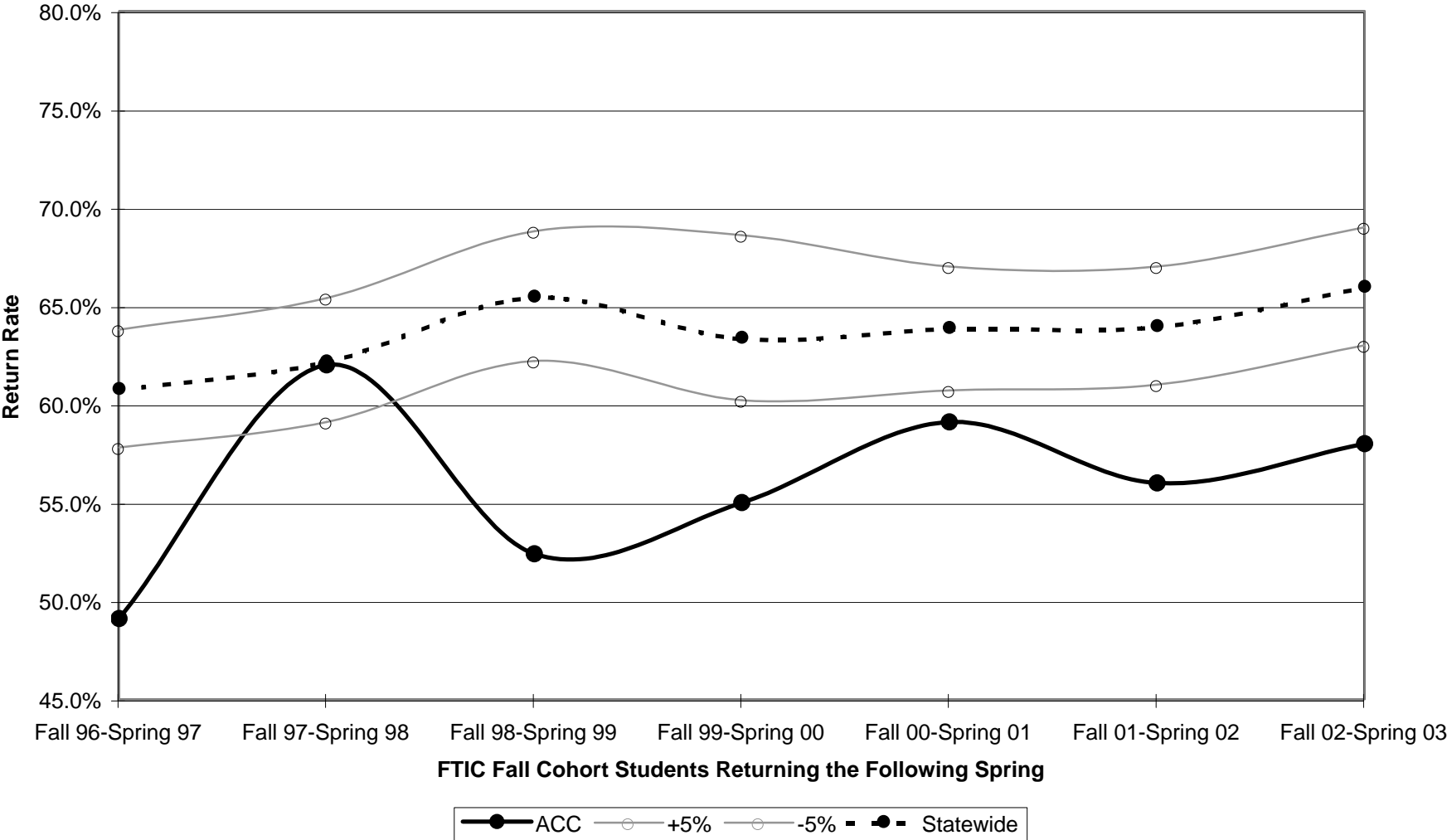
\*Other includes Native American, Asian, International, and Unknown

### Comparison: ACC and Statewide FTIC Fall-to-Spring Return Rate

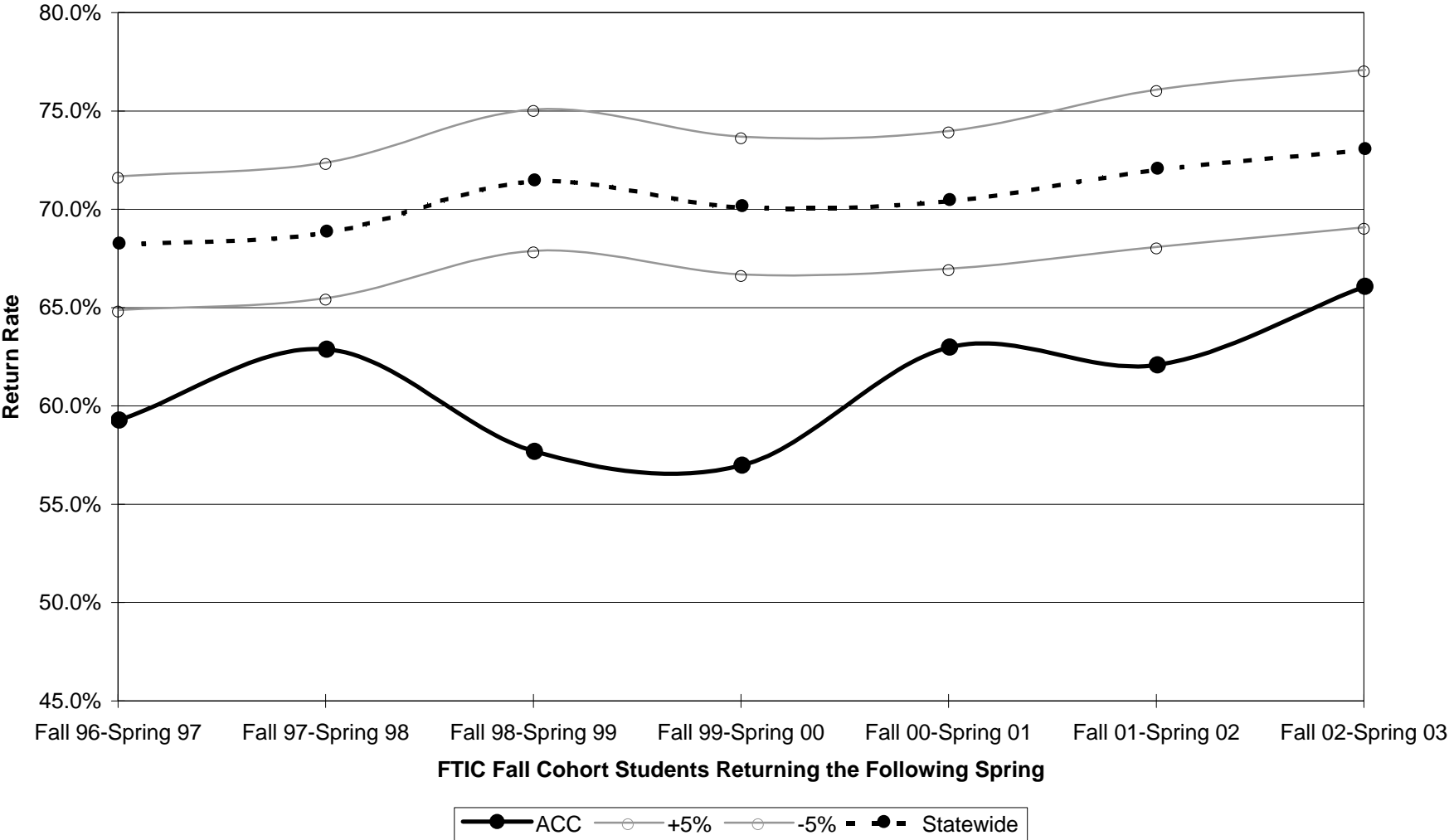
1A. The Percentage of FTIC degree-seeking students enrolled in the fall semester who return the following spring semester will be higher than the state average.



**Comparison: Statewide and ACC Fall-to-Spring Return Rate for Black Students**  
**1B. By group, the percentage of FTIC students enrolled in the fall semester who return the following spring semester will be within  $\pm 5\%$  of their proportion statewide.**

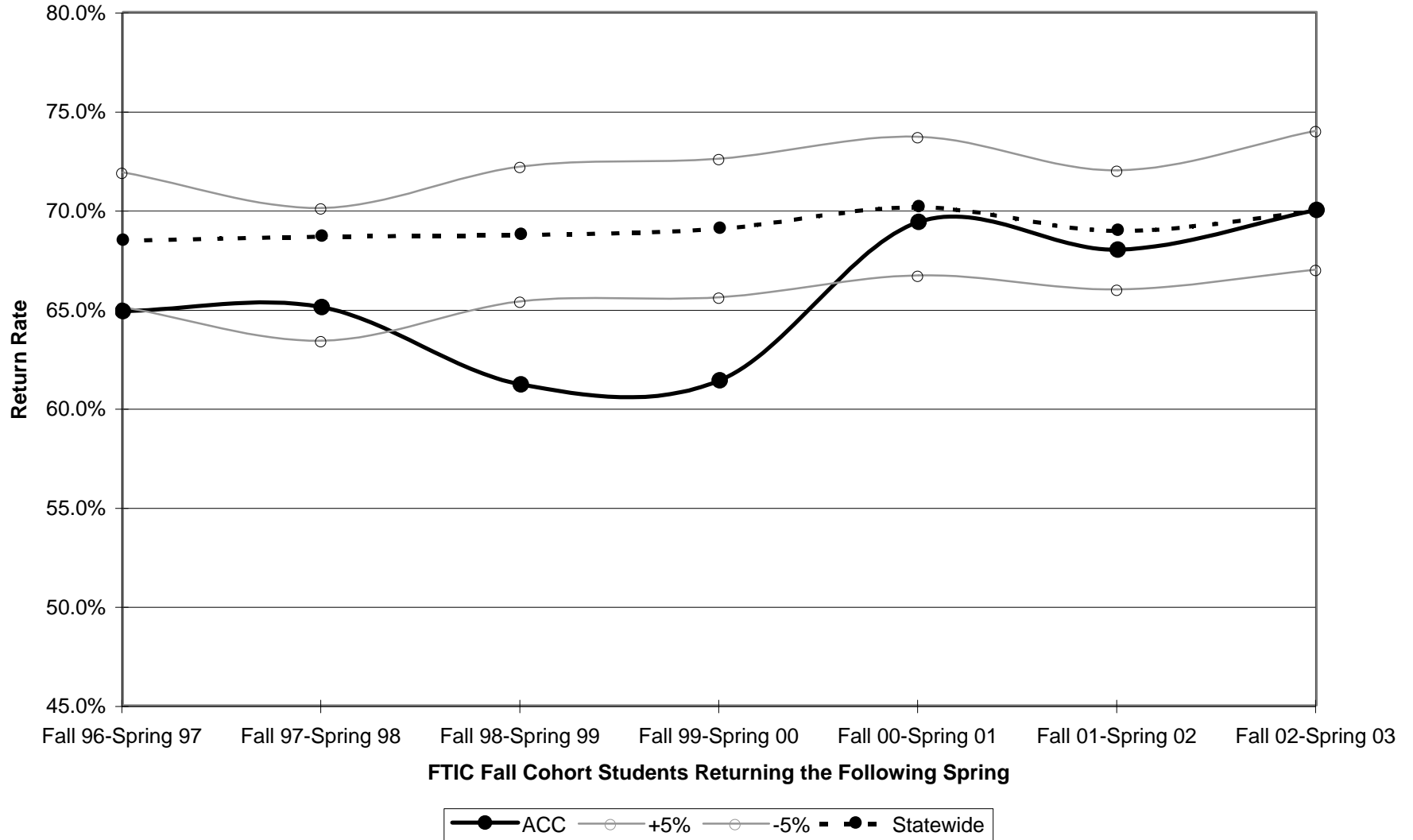


**Comparison: Statewide and ACC Fall-to-Spring Return Rate for Hispanic Students**  
**1B. By group, the percentage of FTIC students enrolled in the fall semester who return the following spring semester will be within  $\pm 5\%$  of their proportion statewide.**

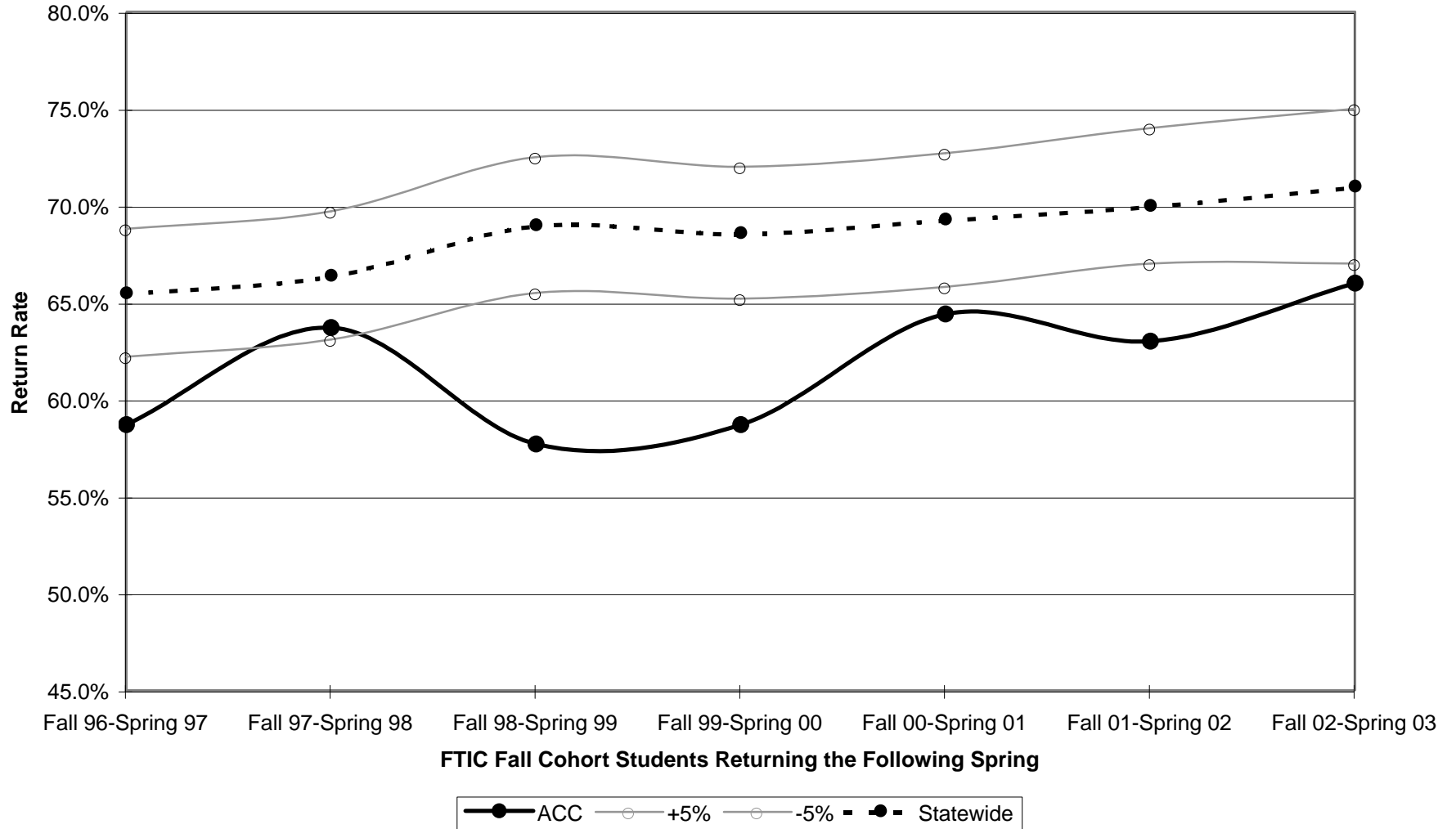


**Comparison: Statewide and ACC Fall-to-Spring Return Rate for Other\* Students**  
**1B. By group, the percentage of FTIC students enrolled in the fall semester who return the following spring semester will be within  $\pm 5\%$  of their proportion statewide.**

\*Includes Native American, Asian, International and Unknown

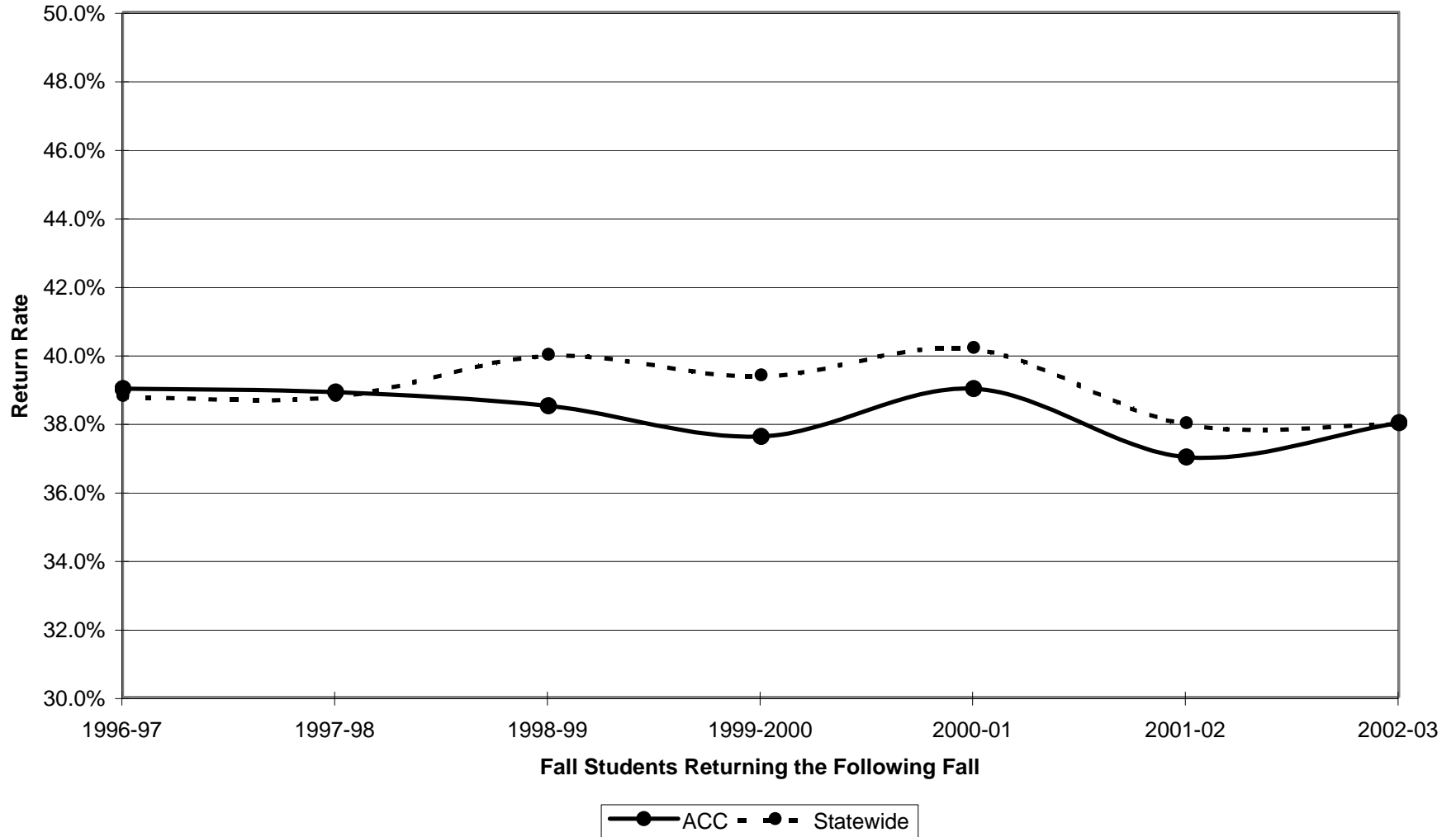


**Comparison: Statewide and ACC Fall-to-Spring Return Rate for White Students**  
**1B. By group, the percentage of FTIC students enrolled in the fall semester who return the following spring semester will be within  $\pm 5\%$  of their proportion statewide.**

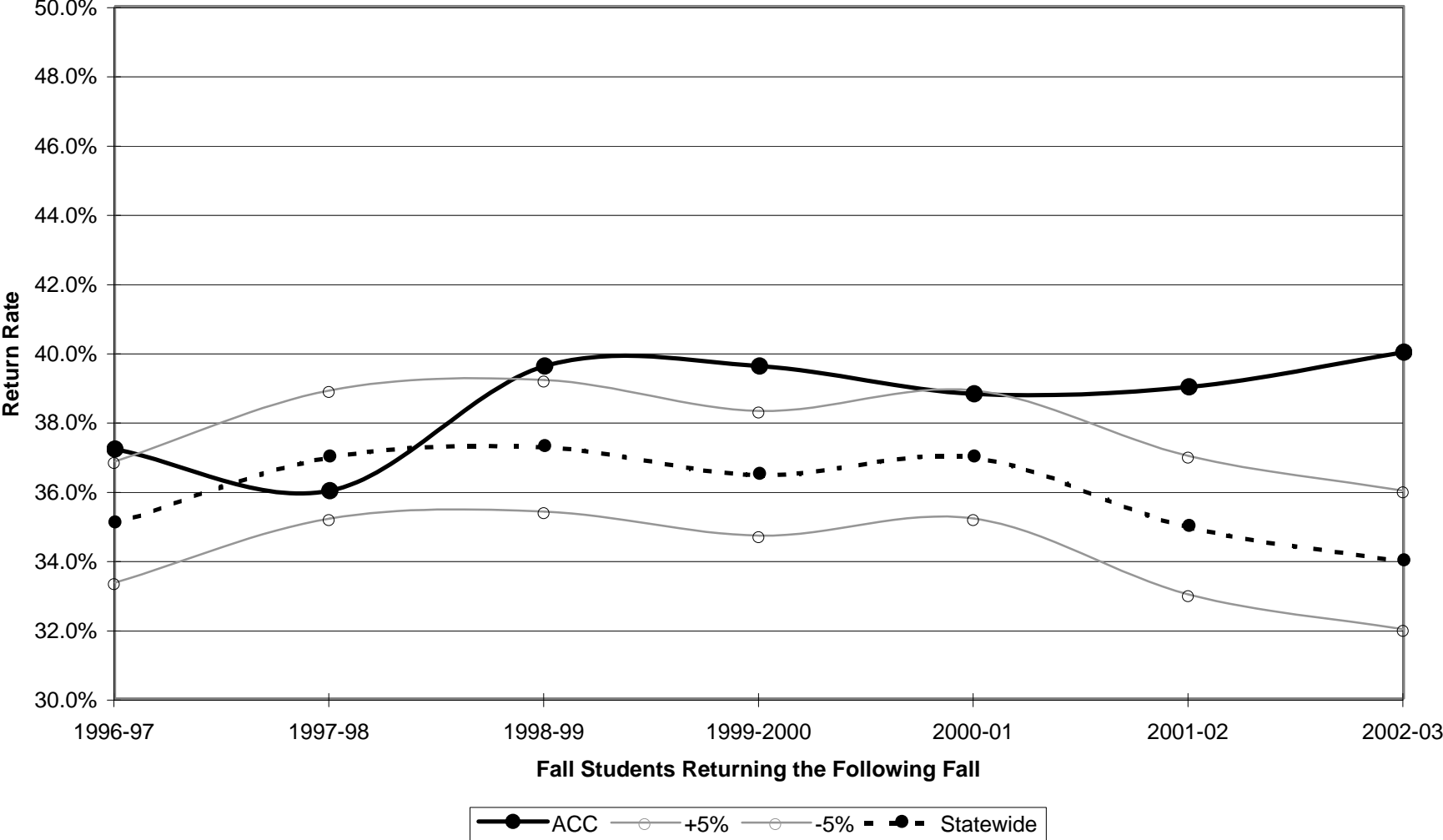


**Comparison: Statewide and ACC Fall-to-Fall Return Rate**

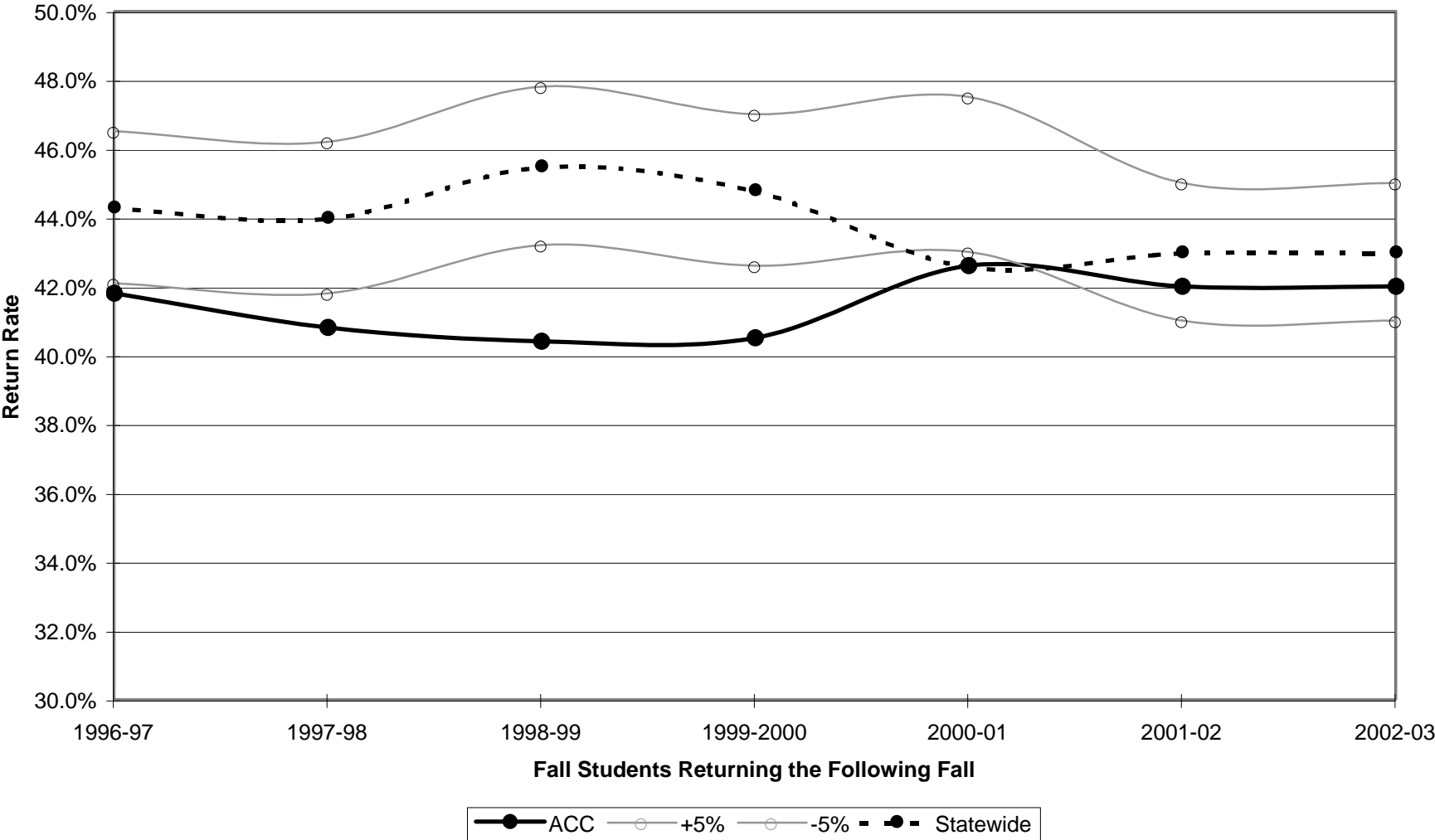
**2A. The percentage of all ACC students enrolled in the fall semester who return the following fall semester will be higher than the state average.**



**Comparison: Statewide and ACC Fall-to Fall Return Rate for Black Students**  
**2B. By group, the percent of ACC students enrolled in the fall semester who return the following fall semester will be within  $\pm 5\%$  of their proportion statewide.**

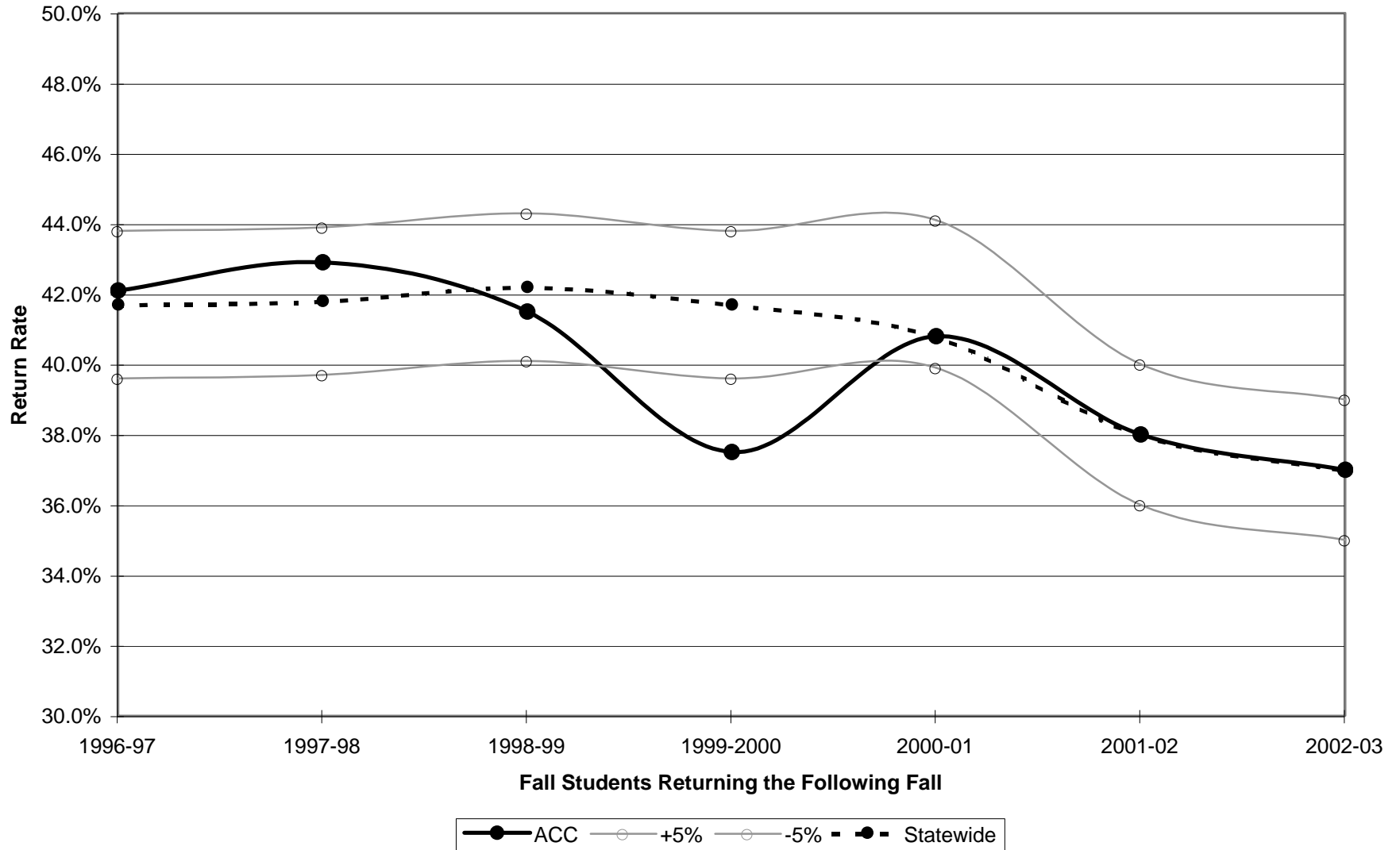


**Comparison: Statewide and ACC Fall-to-Fall Return Rate for Hispanic Students**  
**2B. By group, the percent of ACC students enrolled in the fall semester who return the following fall semester will be within  $\pm 5\%$  of their proportion statewide.**

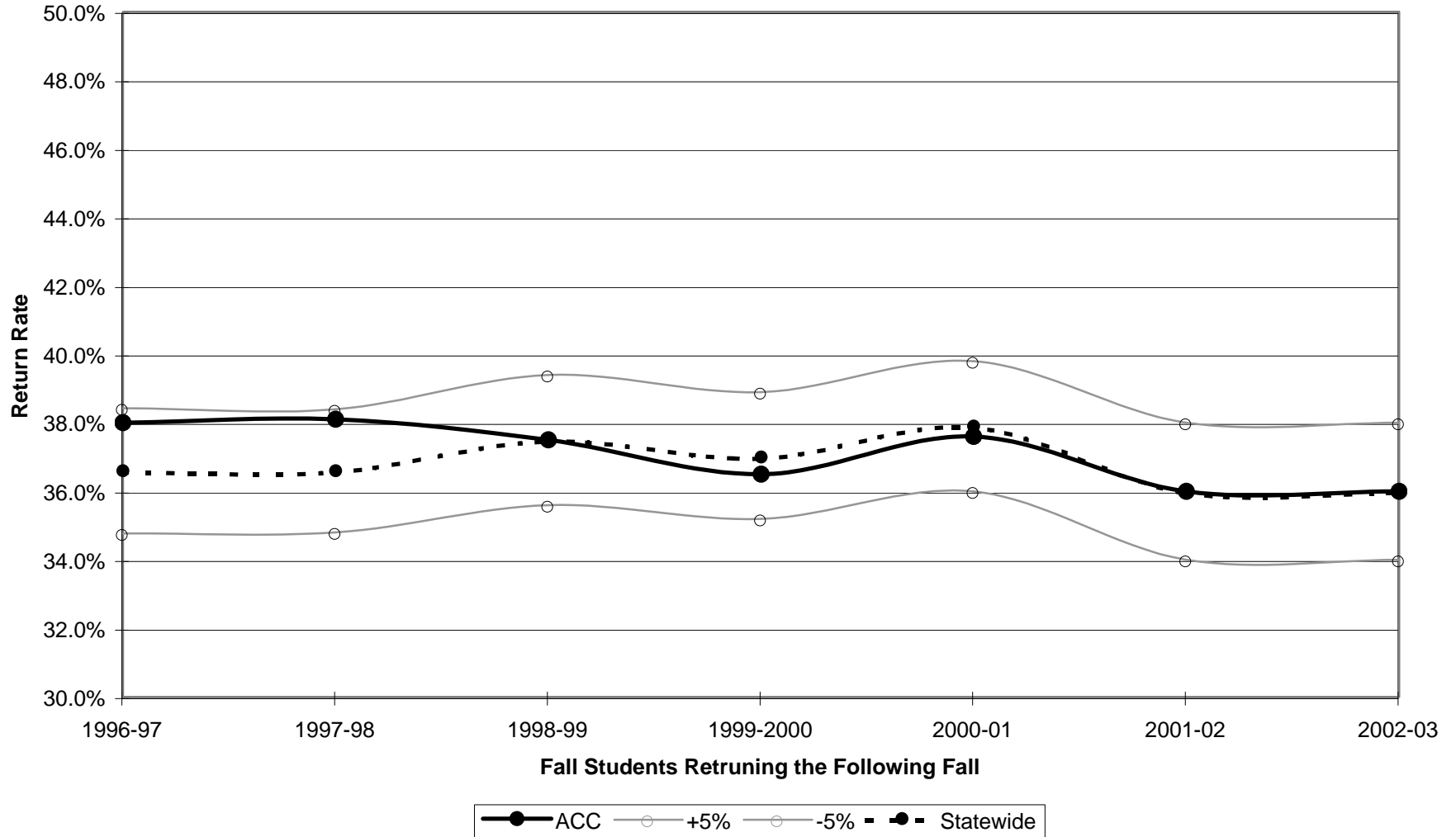


**Comparison: Statewide and ACC Fall-to-Fall Return Rate for Other\* Students**  
**2B. By group, the percent of ACC students enrolled in the fall semester who return the following fall semester will be within  $\pm 5\%$  of their proportion statewide.**

\*Includes Native American, Asian, International and Unknown

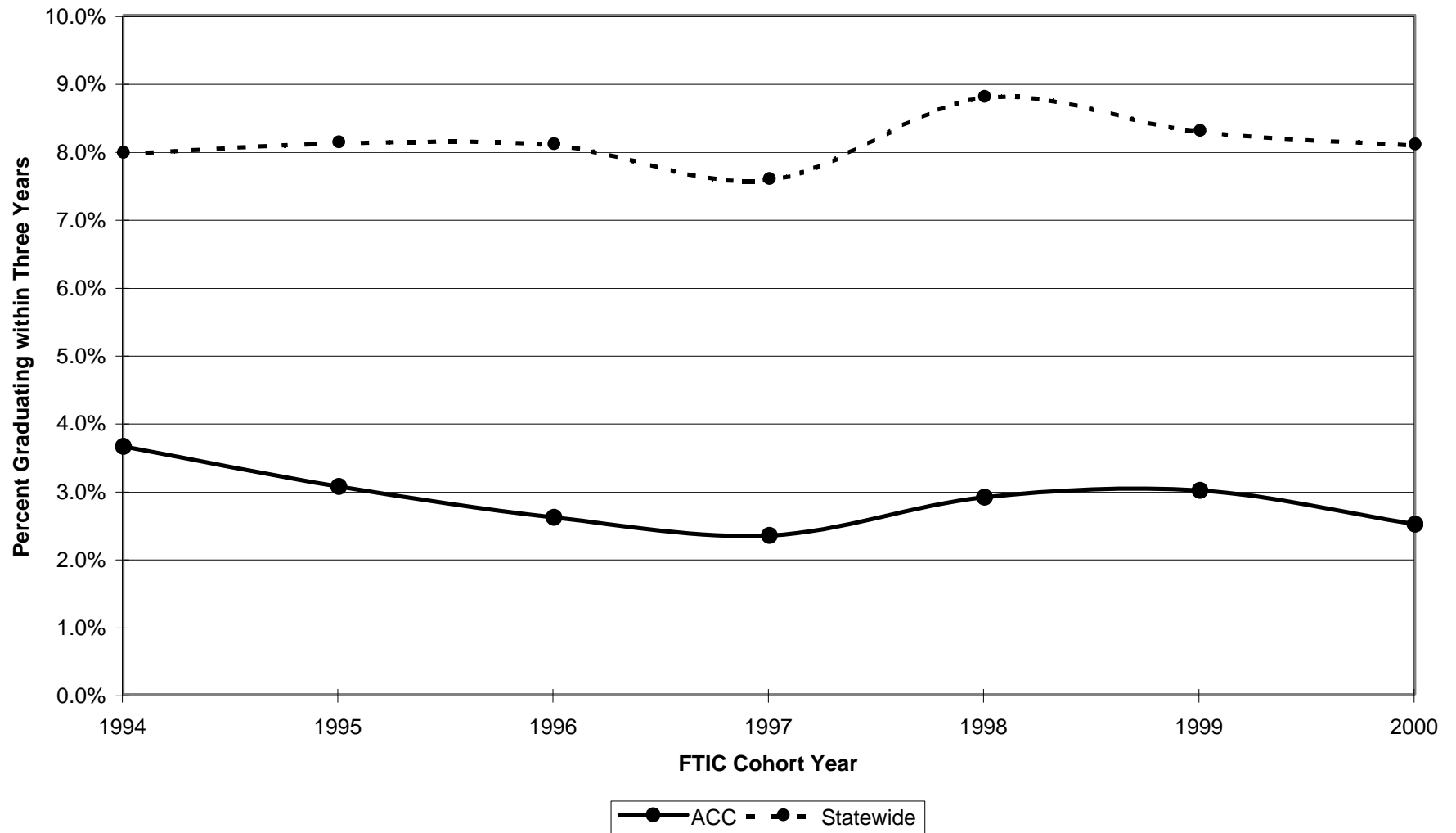


**Comparison: Statewide and ACC Fall-to-Fall Return Rate for White Students**  
**2B. By group, the percent of ACC students enrolled in the fall semester who return the following fall semester will be within  $\pm 5\%$  of their proportion statewide.**

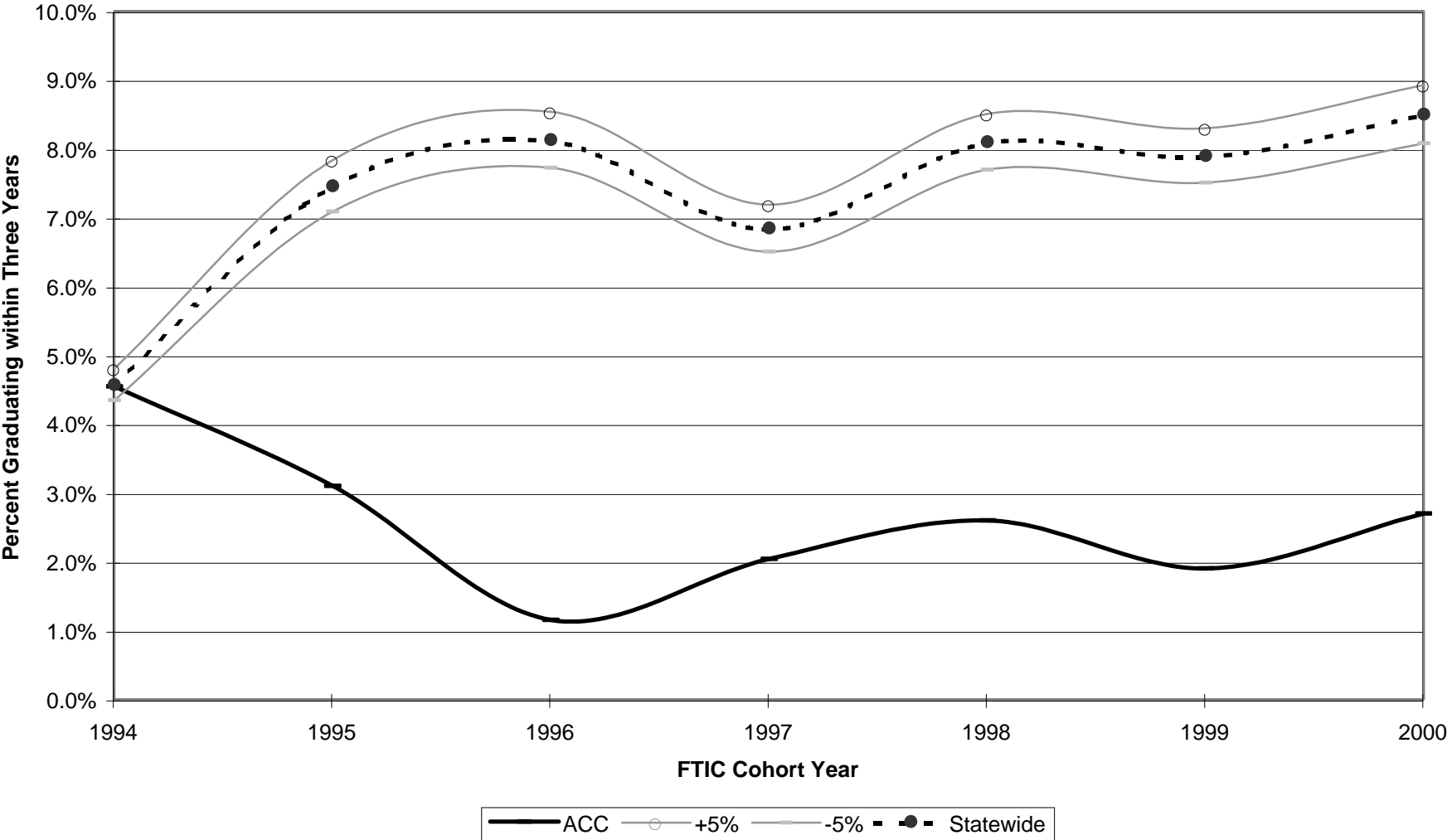


### Comparison: Statewide and ACC Graduation Rates

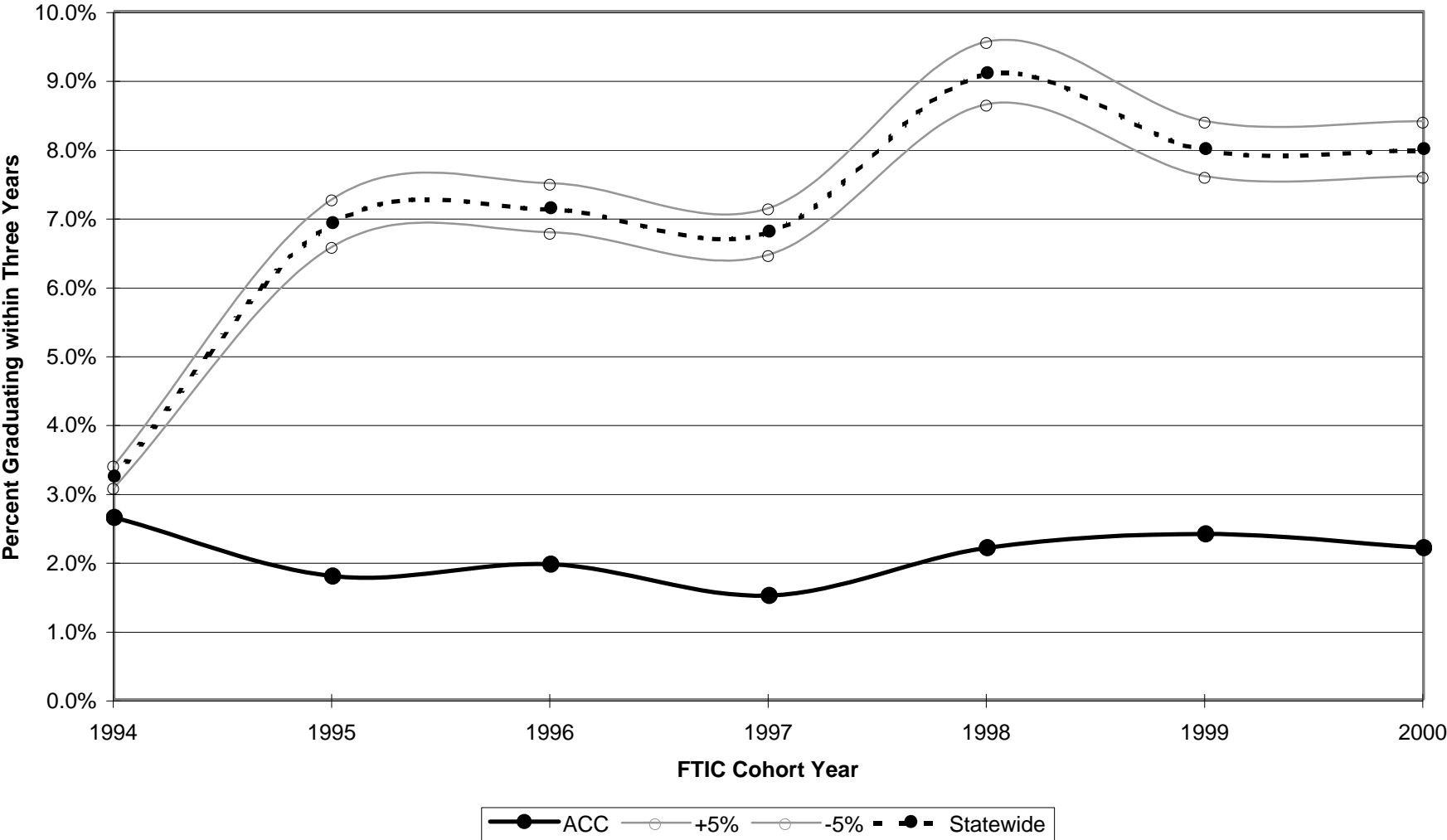
3A. The three year completion rates of FTIC degree-seeking students will be at least 5% higher than the state average.



**Comparison: Statewide and ACC Graduation Rate for Black Students**  
**3B. By group, the percentage of FTIC students who complete a degree or certificate will be within  $\pm 5\%$  of their proportion statewide.**

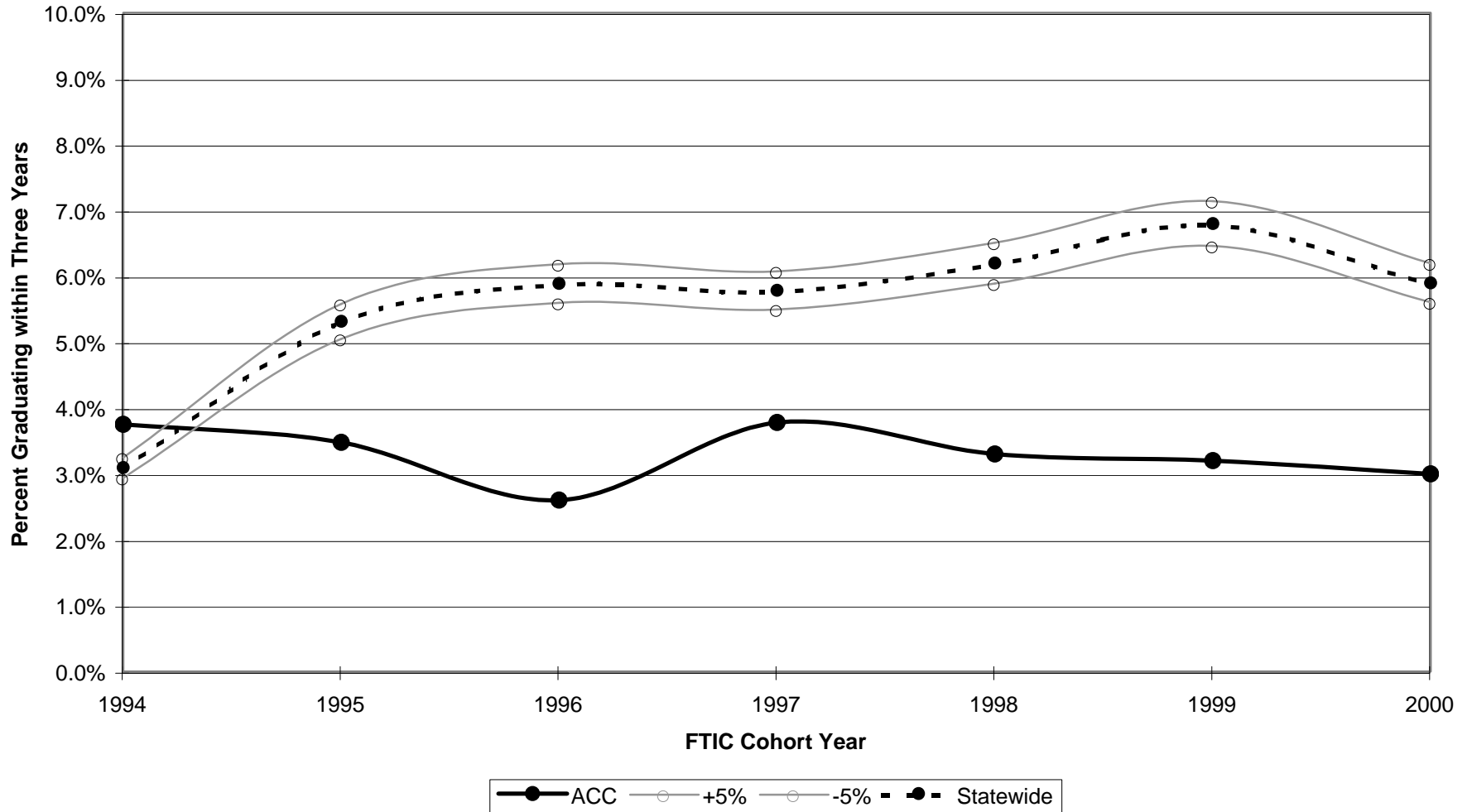


**Comparison: Statewide and ACC Graduation Rate for Hispanic Students**  
3B. By group, the percentage of FTIC students who complete a degree or certificate will be within  $\pm 5\%$  of their proportion statewide.



**Comparison: Statewide and ACC Graduation Rate for Other\* Students**  
**3B. By group, the percentage of FTIC students who complete a degree or certificate will be within  $\pm 5\%$  of their proportion statewide.**

\*Includes Native American, Asian, International and Unknown



**Comparison: Statewide and ACC Graduation Rate for White Students**  
**3B. By group, the percentage of FTIC students who complete a degree or certificate will be within  $\pm 5\%$  of their proportion statewide.**

