



CONTINUING EDUCATION  
& ADULT EDUCATION

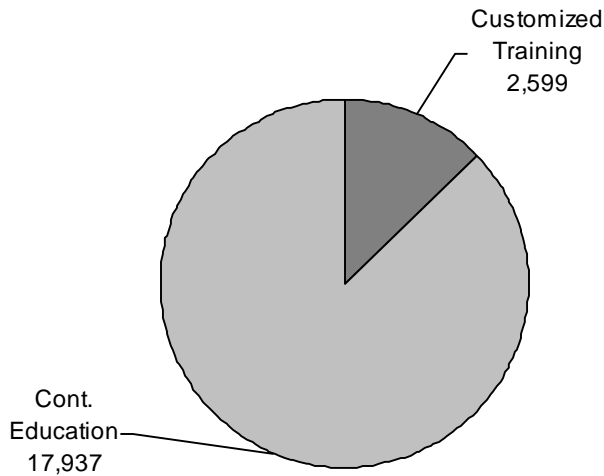
**Continuing Education**

Continuing Education programs at Austin Community College include Customized Training and Continuing Education.

- Customized Training provides customized contract training and education, and job profiling and assessment services to individual organizations to improve job performance and productivity of their employees.
- Continuing Education includes apprenticeship training in a range of programs that are registered with the U. S. Department of Labor, and personal, career, and business development courses of study designed to assist individuals in improving their job skills and meeting continuing education credit requirements of their professions.

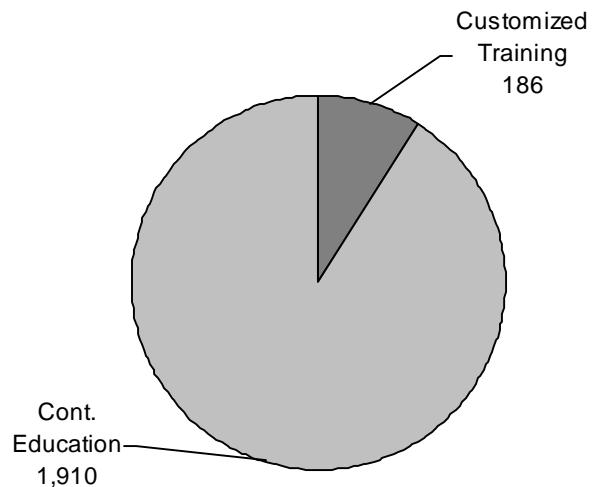
**Continuing Education**

**Participants FY99**



Total 20,536 Employees/Participants Served

**Courses FY99**



Total 2,096 Courses Offered

Source: Office of Continuing Education

## Continuing Education Programs of Study

### Apprenticeship and Journeyworker Training

### Business Development

Financial Management Series

Marketing for the Small Business

### Job Entry Preparation

- Computer Repair and Maintenance
- Consumer Electronics
- Customer Support Analyst Program
- Horticulture and Landscaping
- Housekeeping
- Jewelry
- Notary Public
- Photography
- Power Mechanics
- Sign Language
- Substitute Teacher Training
- Upholstery
- Welding

### Career Advancement Programs

- Certified Employee Benefit Specialist
- Child Care and Development
- Commercial Property Management
- Environmental Management
- Quality Review Programs
- Translators and Intepreters

### Health Care Programs

- Case Management Certificate
- Clinical Technician
- Continuing Education for CNAs
- Continuing Education for Healthcare Professionals
- CPR Programs
- DMI-Sonography Refresher
- EMS Programs
- Gerontology Certificate
- Independent Study Continuing Education for Nurses and EMTs

- Licensed Chemical Dependency Counselor
- Long-term Care Administration
- Medical Terminology
- Medication Aide
- Nurse Aide
- Nursing Home Activity Director
- Pharmacy Technician
- Phlebotomy Technician
- TV Courses

### Insurance

### Professional Development

### Real Estate

- Mandatory Continuing Education
- Real Estate Education

### Computer Training Programs

### Programming and World Wide Web Development

### Autodesk Premier Training Center

- Authorized Cad Training Center
- Microstation

### Management and Supervision

- Medical Office Management Series
- Outdoor Safety/Rescue Programs
- Records Management Series
- Safety Technologist Training
- Supervision Series
- Volunteer Management Academy

### Personal Development

Arts and Crafts

Aviation

Communication

Driving Safety Course

Financial Programs

Language and Culture

Maintenance and Repair

Music

Personal Growth

Photography

Physical Fitness and Recreation

Source: Office of Continuing Education

### Adult Education

Austin Community College has served as the prime sponsor of the Adult Education Program of Travis County Co-op since September 1973. The program is funded annually and evaluated by the Texas Education Agency (TEA). The federal portion of the funding is provided by the U.S. Department of Education through TEA. The state portion of the funding is provided by the State of Texas. Local funding is also provided by Austin Community College. A coordinating committee, comprised of public school superintendents and their representatives, human service agency representatives, members of the business community, and student representatives, serves as an advisory committee in accordance with TEA guidelines.

#### Programs

The Adult Education Program includes the following components.

1. *Adult Basic Education (ABE)* programs for the adult whose reading, writing, and arithmetic skills are below the ninth-grade level. These classes, which consist of both self-paced and group instruction, are also part of the entry component of adult secondary or GED preparation.
2. *General Education Development (GED)* classes are for the adult whose high school education was interrupted. These classes cover five areas: writing, social studies, science, reading, and math. GED classes are designed to assist students to prepare for the GED Test and offer life and job readiness skills.
3. *English-as-a-Second Language (ESL)* classes are for the adult who wants to speak and write English.

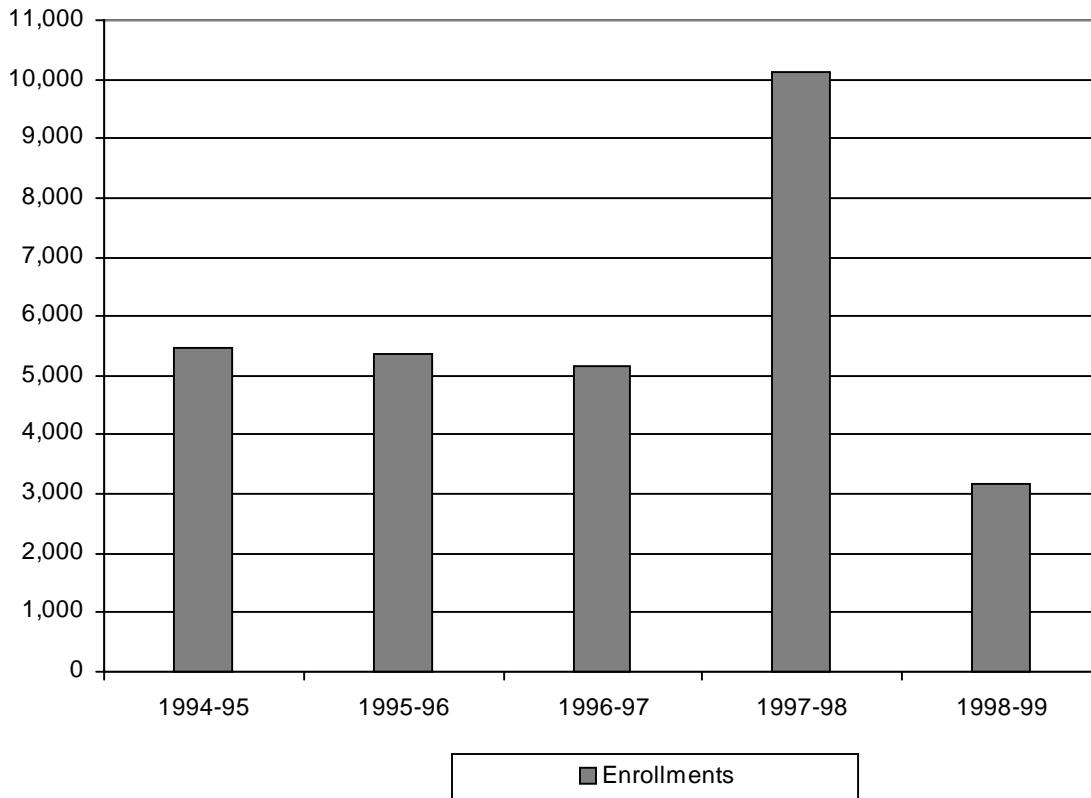
The following programs are specially funded through adult education and are designed for special populations.

1. *The Adult Education for Correctional Institutions* program provides adult basic education and GED preparation classes for inmates of city and county correctional facilities.
2. *The Adult Education Even Start Family Literacy* program helps break the cycle of poverty and illiteracy by improving the educational opportunities of the nation's low income families by integrating early childhood education, adult literacy or basic education, and parenting education into a unified family literacy program.

**ADULT EDUCATION  
Enrollments  
1994-1999**

	<b>1994-95</b>	<b>1995-96</b>	<b>1996-97</b>	<b>1997-98</b>	<b>1998-99</b>
Enrollments	5,483	5,361	5,160	10,106	3,163

- The drop in enrollment for FY 1994-95 can be attributed to a reduction in funding allocations from state and federal sources resulting in a reduction of services for that year.
- FY 1998-99 only includes students reported according to TEA guidelines.



Source: Office of Adult Education

**CONTINUING EDUCATION AND ADULT EDUCATION**

**ADULT EDUCATION  
Enrollment by Gender  
1994-1999**

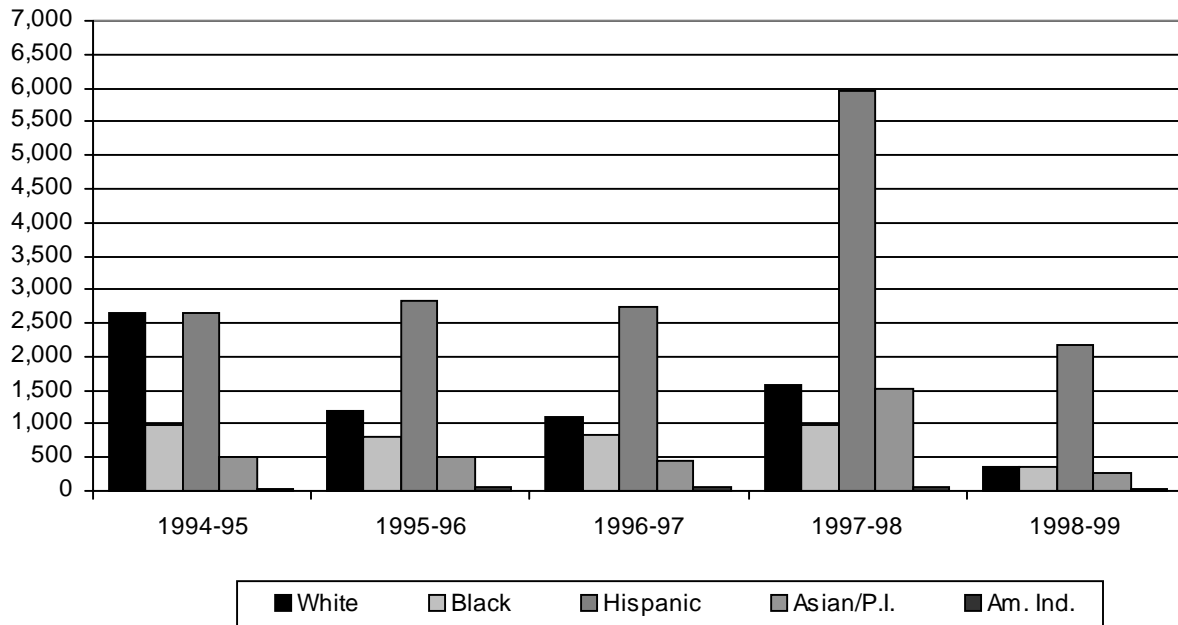
	<b>1994-95</b>	<b>1995-96</b>	<b>1996-97</b>	<b>1997-98</b>	<b>1998-99</b>
<b>Gender</b>					
Male	2,575	2,263	2,242	3,384	1,392
% of Total	47.0 %	42.2 %	43.4 %	33.4 %	44.1%
Female	2,908	3,098	2,918	6,722	1,771
% of Total	53.0 %	57.7 %	56.5 %	66.5 %	55.9 %
<b>TOTAL</b>	<b>5,483</b>	<b>5,361</b>	<b>5,160</b>	<b>10,106</b>	<b>3,163</b>



Source: Office of Adult Education

**ADULT EDUCATION  
Enrollment by Ethnicity  
1994-1999**

	1994-95	1995-96	1996-97	1997-98	1998-99
<b>Ethnicity</b>					
White	1,301	1,180	1,099	1,592	344
% of Total	23.7 %	22.0 %	21.3 %	15.8 %	10.9 %
Black	976	790	828	983	359
% of Total	17.8 %	14.7 %	16.0 %	9.7 %	11.3 %
Hispanic	2,657	2,822	2,730	5,961	2,169
% of Total	48.5 %	52.6 %	52.9 %	59.0 %	68.6 %
Asian/Pacific Islander	509	515	454	1,511	276
% of Total	9.3 %	9.6 %	8.8 %	15.0 %	8.7 %
Am. Indian/Alaskan Native	40	54	49	59	15
% of Total	0.7 %	1.0 %	0.9 %	0.6 %	.5 %
<b>TOTAL</b>	<b>5,483</b>	<b>5,361</b>	<b>5,160</b>	<b>10,106</b>	<b>3,163</b>



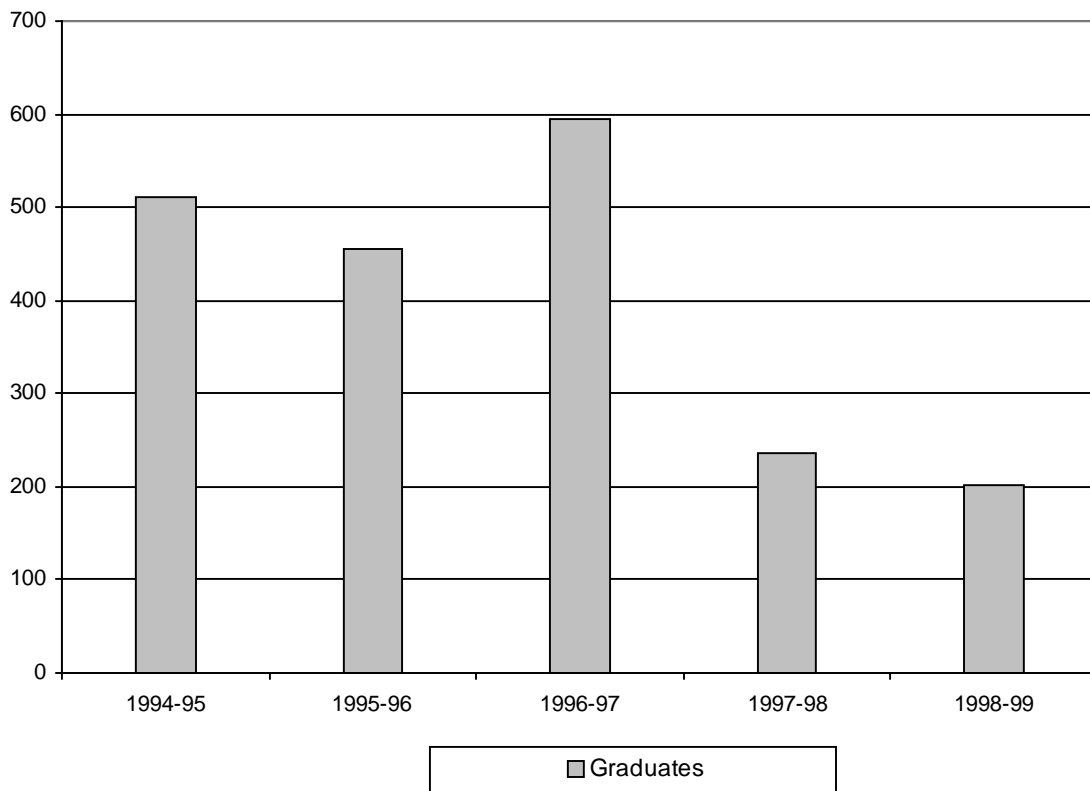
Source: Office of Adult Education

**CONTINUING EDUCATION AND ADULT EDUCATION**

**ADULT EDUCATION  
Graduates  
1994-1999**

	<b>1994-95</b>	<b>1995-96</b>	<b>1996-97</b>	<b>1997-98</b>	<b>1998-99</b>
Graduates	510	455	594	236	202

- The drop in graduates for FY 1994-95 can be attributed to new state requirements for high school graduation and the renorming of the GED test.



Source: Office of Adult Education