

## Section 9 *Faculty & Staff*

*This section can be used for finding:*

- *the number of personnel by ethnicity, gender, and classification.*
- *the number of faculty by age, ethnicity, gender, and dean area.*

### Contents

Staffing Table Personnel by Classification .....	131
Classified Personnel .....	132
Administrative and Professional/Technical Personnel .....	132
Staffing Table Personnel by Ethnicity and Gender .....	133
Classified Personnel .....	134
Professional/Technical Personnel .....	135
Administrative Personnel .....	136
Grant Personnel .....	137
Faculty .....	138
Full-time Faculty by Age and Gender .....	138
Full-time Faculty by Ethnicity and Gender .....	139
Full-time Faculty by Dean Area .....	140
Adjunct Faculty by Age and Gender .....	141
Adjunct Faculty by Ethnicity and Gender .....	142
Adjunct Faculty by Dean Area .....	143
Credit Teaching Faculty .....	144

### Useful Terms

**Adjunct Faculty** - include those instructors in college credit and certificate programs who are appointed on a course-by-course basis.

**Administrative Personnel** - include staffing table employees that are exempt from receiving overtime pay, are paid on a monthly basis, and are considered upper-management.

**Classified Personnel** - include staffing table employees that are not exempt from receiving overtime pay and are paid on a bi-weekly basis.

**Credit Teaching Faculty** - include only instructors teaching credit courses. This excludes librarians and counselors who hold faculty status but are not teaching, and instructors in non-credit (continuing education) courses.

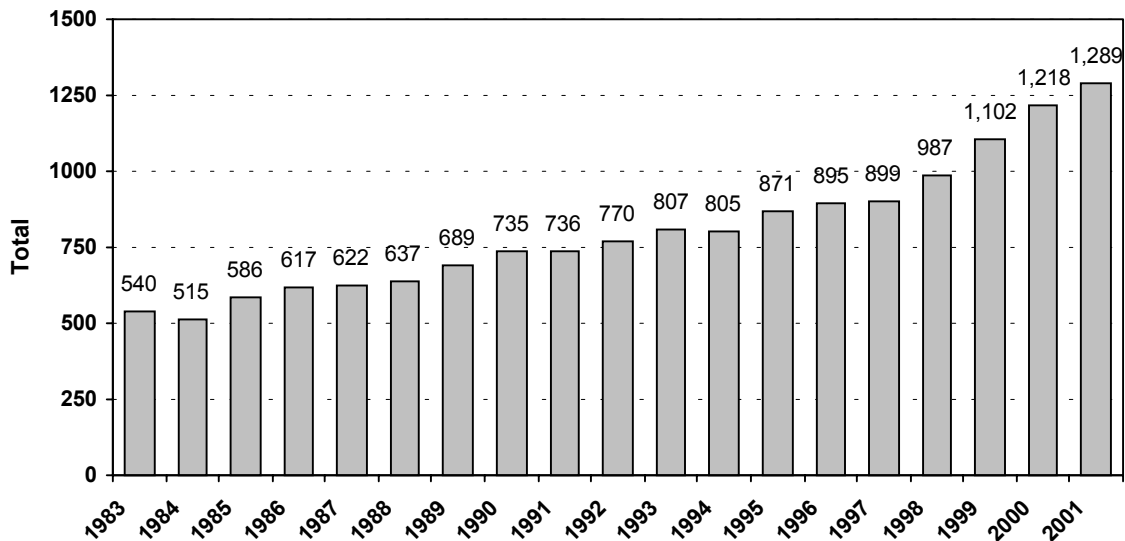
**Full-time Faculty** - include instructors in college credit programs as well as counselors and librarians who are employed by the college and are included in the staffing table.

**Professional/Technical Personnel** - include staffing table employees that are exempt from overtime pay and are paid on a monthly basis.

**Staffing Table Personnel** - include non-grant employees who are eligible for benefits and accrue leave.

**Staffing Table Personnel by Classification  
Fall 1983 - 2001**

Fall Semester	Full-time Faculty <sup>1</sup>	Admin. and Prof./Tech. <sup>2</sup>	Classified	Total
1983	197	66	277	540
1984	192	50	273	515
1985	220	99	267	586
1986	222	105	290	617
1987	226	105	291	622
1988	235	112	290	637
1989	247	118	324	689
1990	261	132	342	735
1991	267	135	334	736
1992	271	149	350	770
1993	284	159	364	807
1994	308	147	350	805
1995	325	161	385	871
1996	336	203	356	895
1997	344	210	345	899
1998	355	232	400	987
1999	381	289	432	1,102 <sup>3</sup>
2000	438	326	454	1,218
2001	424	366	499	1,289



<sup>1</sup> Includes counselors and librarians, deans through 1999, and temporary full-time faculty beginning in 2000.

<sup>2</sup> Includes deans after 1999.

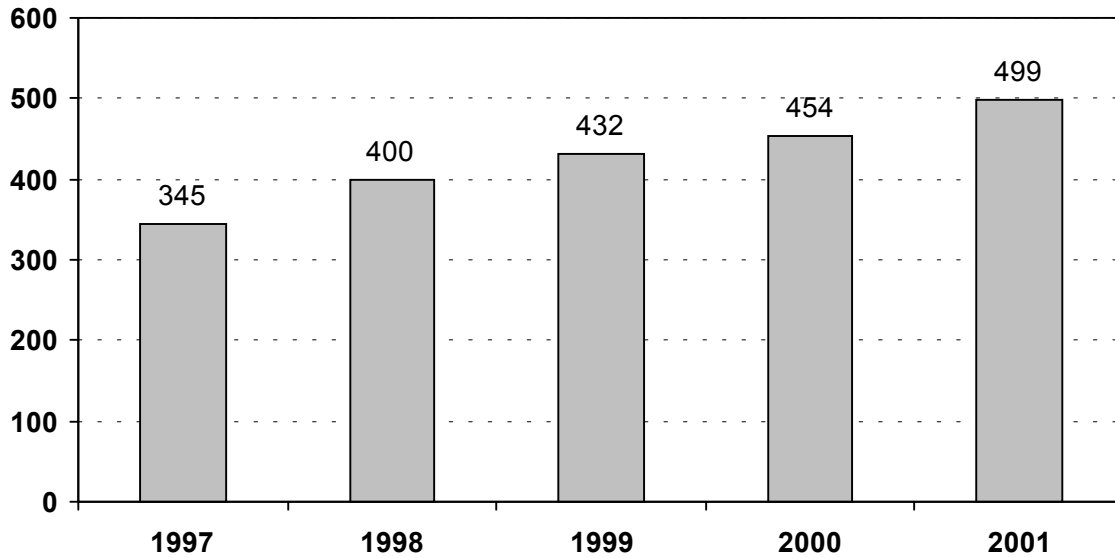
<sup>3</sup> Increase reflects new faculty positions and conversion of hourly positions to staffing table positions.

NOTE: These numbers include staffing table positions only.

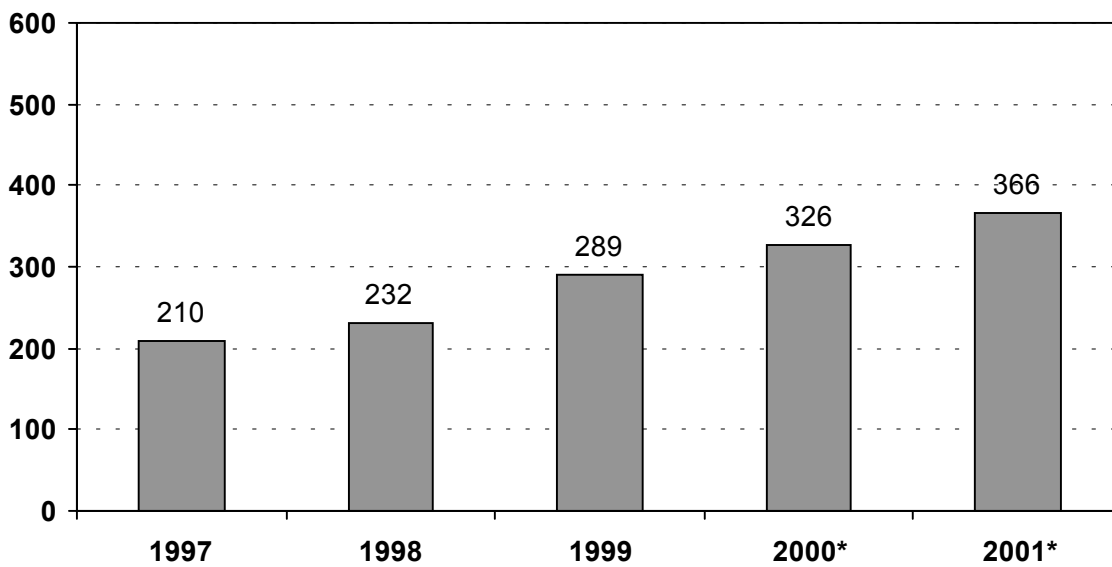
Source: Office of Human Resources

### Staffing Table Personnel by Classification Fall 1997 - Fall 2001

#### Classified Personnel



#### Administrative and Professional/Technical Personnel

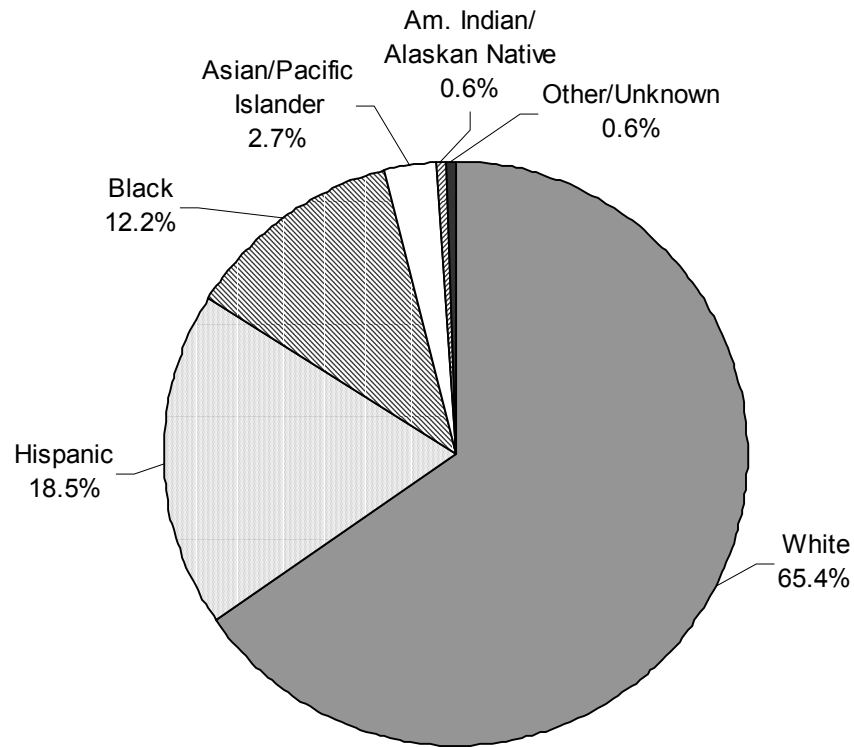


\* Includes deans.

Source: Office of Human Resources

**Staffing Table Personnel by Ethnicity and Gender  
Fall 2001**

**Total Staffing Table Personnel**

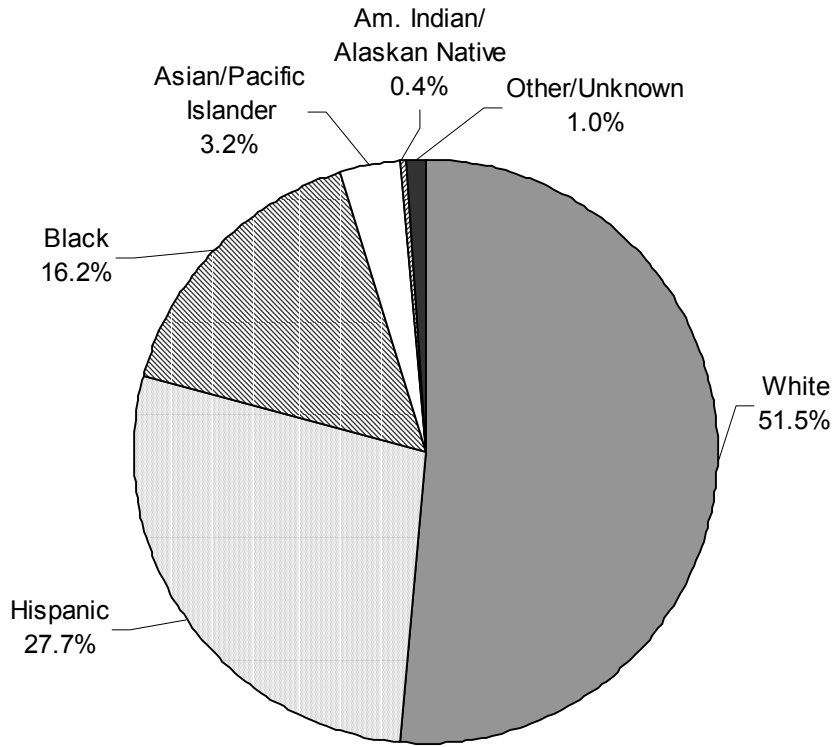


<b>Ethnicity</b>	<b>Male</b>		<b>Female</b>		<b>Total</b>	
<b>White</b>	351	27.2%	492	38.2%	843	65.4%
<b>Hispanic</b>	103	8.0%	135	10.5%	238	18.5%
<b>Black</b>	55	4.3%	102	7.9%	157	12.2%
<b>Asian/Pacific Islander</b>	12	0.9%	23	1.8%	35	2.7%
<b>Am. Indian/Alaskan Native</b>	5	0.4%	3	0.2%	8	0.6%
<b>Other/Unknown</b>	5	0.4%	3	0.2%	8	0.6%
<b>TOTAL</b>	<b>531</b>	<b>41.2%</b>	<b>758</b>	<b>58.8%</b>	<b>1,289</b>	

NOTE: These numbers include staffing table positions only. Percents may not add to 100 due to rounding.

Source: Office of Human Resources

**Classified Personnel  
Fall 2001**

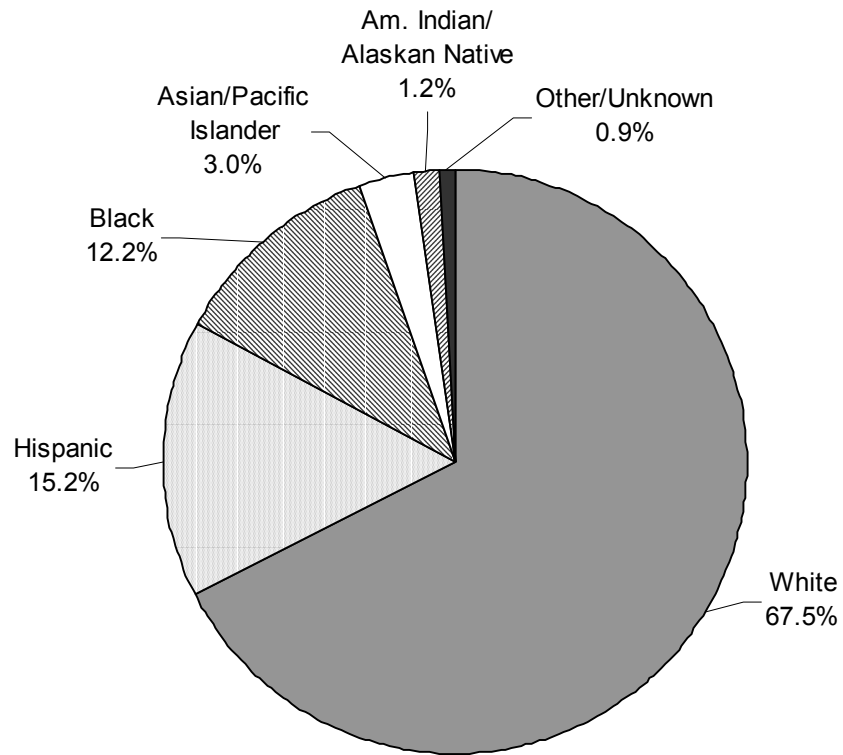


<b>Ethnicity</b>	<b>Male</b>		<b>Female</b>		<b>Total</b>	
<b>White</b>	102	20.4%	155	31.1%	257	51.5%
<b>Hispanic</b>	63	12.6%	75	15.0%	138	27.7%
<b>Black</b>	29	5.8%	52	10.4%	81	16.2%
<b>Asian/Pacific Islander</b>	6	1.2%	10	2.0%	16	3.2%
<b>Am. Indian/Alaskan Native</b>	2	0.4%	0	0.0%	2	0.4%
<b>Other/Unknown</b>	2	0.4%	3	0.6%	5	1.0%
<b>TOTAL</b>	<b>204</b>	<b>40.9%</b>	<b>295</b>	<b>59.1%</b>	<b>499</b>	

NOTE: Percents may not add to 100 due to rounding.

Source: Office of Human Resources

**Professional/Technical Personnel  
Fall 2001**

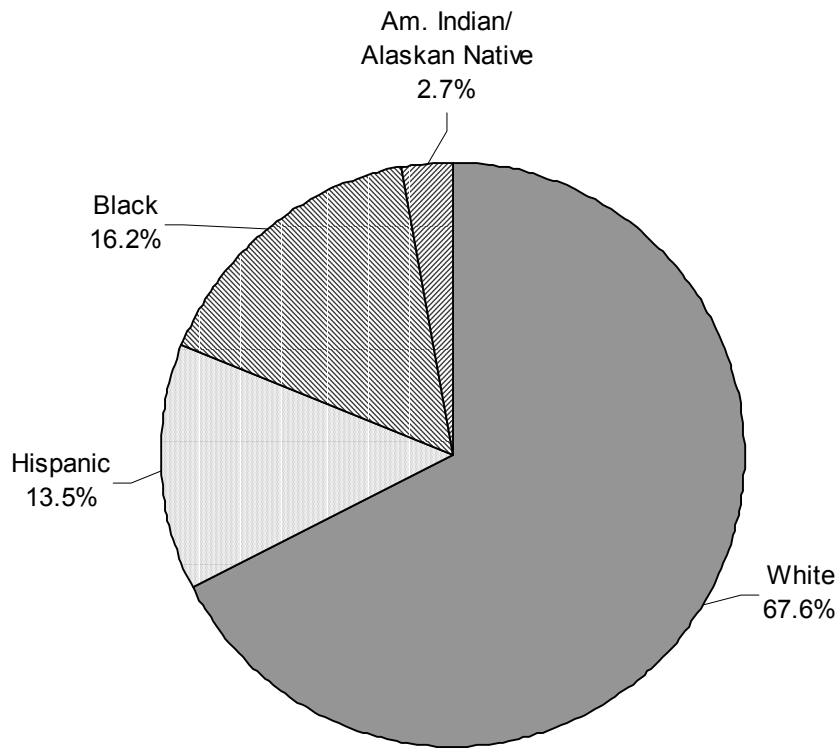


<b>Ethnicity</b>	<b>Male</b>		<b>Female</b>		<b>Total</b>	
<b>White</b>	84	25.5%	138	41.9%	222	67.5%
<b>Hispanic</b>	15	4.6%	35	10.6%	50	15.2%
<b>Black</b>	10	3.0%	30	9.1%	40	12.2%
<b>Asian/Pacific Islander</b>	4	1.2%	6	1.8%	10	3.0%
<b>Am. Indian/Alaskan Native</b>	2	0.6%	2	0.6%	4	1.2%
<b>Other/Unknown</b>	3	0.9%	0	0.0%	3	0.9%
<b>TOTAL</b>	<b>118</b>	<b>35.9%</b>	<b>211</b>	<b>64.1%</b>	<b>329</b>	

NOTE: Percents may not add to 100 due to rounding.

Source: Office of Human Resources

**Administrative Personnel\*  
Fall 2001**



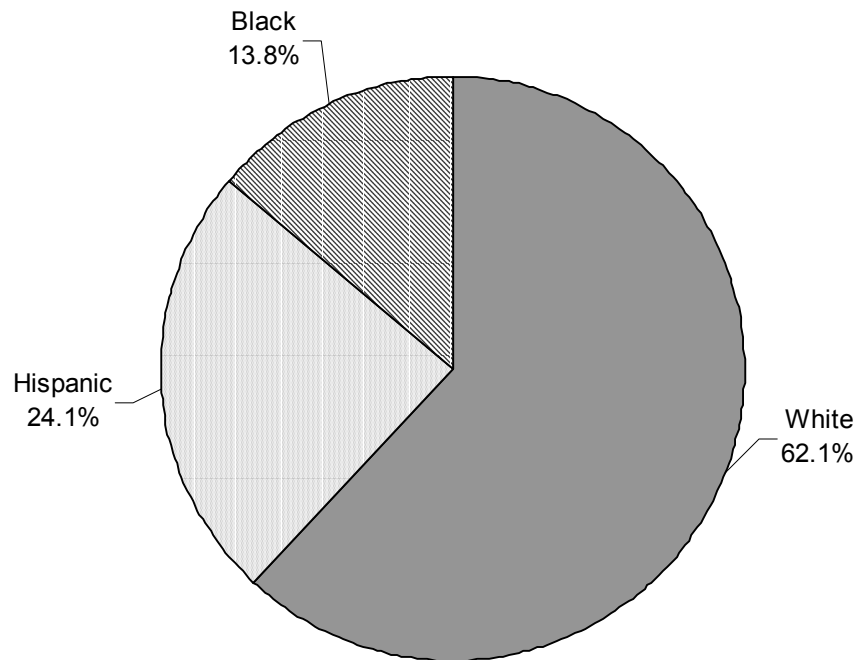
<b>Ethnicity</b>	<b>Male</b>		<b>Female</b>		<b>Total</b>	
<b>White</b>	14	37.8%	11	29.7%	25	67.6%
<b>Hispanic</b>	1	2.7%	4	10.8%	5	13.5%
<b>Black</b>	0	0.0%	6	16.2%	6	16.2%
<b>Asian/Pacific Islander</b>	0	0.0%	0	0.0%	0	0.0%
<b>Am. Indian/Alaskan Native</b>	0	0.0%	1	2.7%	1	2.7%
<b>Other/Unknown</b>	0	0.0%	0	0.0%	0	0.0%
<b>TOTAL</b>	<b>15</b>	<b>40.5%</b>	<b>22</b>	<b>59.5%</b>	<b>37</b>	

\* Includes deans.

NOTE: Percents may not add to 100 due to rounding.

Source: Office of Human Resources

**Grant Personnel  
Fall 2001**

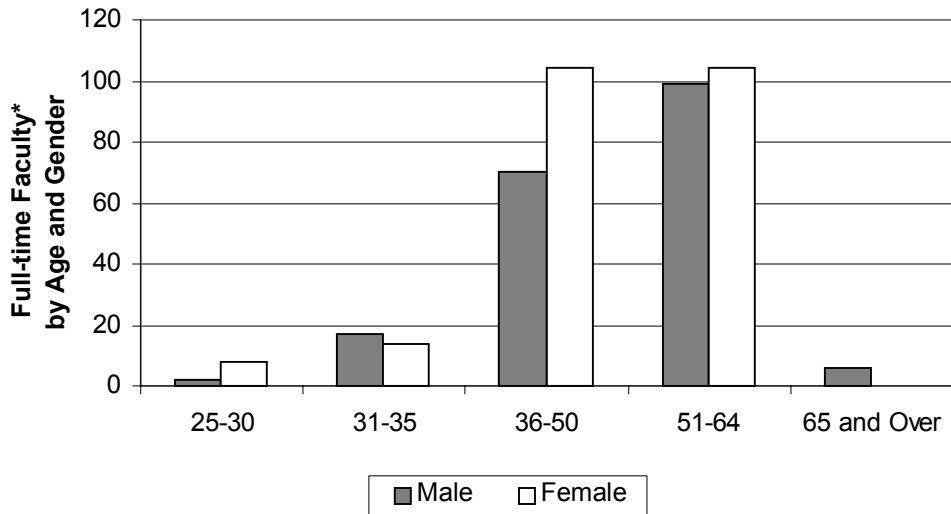


<b>Ethnicity</b>	<b>Male</b>		<b>Female</b>		<b>Total</b>	
<b>White</b>	6	20.7%	12	41.4%	18	62.1%
<b>Hispanic</b>	4	13.8%	3	10.3%	7	24.1%
<b>Black</b>	2	6.9%	2	6.9%	4	13.8%
<b>Asian/Pacific Islander</b>	0	0.0%	0	0.0%	0	0.0%
<b>Am. Indian/Alaskan Native</b>	0	0.0%	0	0.0%	0	0.0%
<b>Other/Unknown</b>	0	0.0%	0	0.0%	0	0.0%
<b>TOTAL</b>	<b>12</b>	<b>41.4%</b>	<b>17</b>	<b>58.6%</b>	<b>29</b>	

NOTES: Grant positions include college employees whose salaries are funded by government or private agency grants and contracts. They are not considered staffing table positions. Percents may not add to 100 due to rounding.

Source: Office of Human Resources

**Full-time Faculty by Age and Gender\*  
Fall 2001**



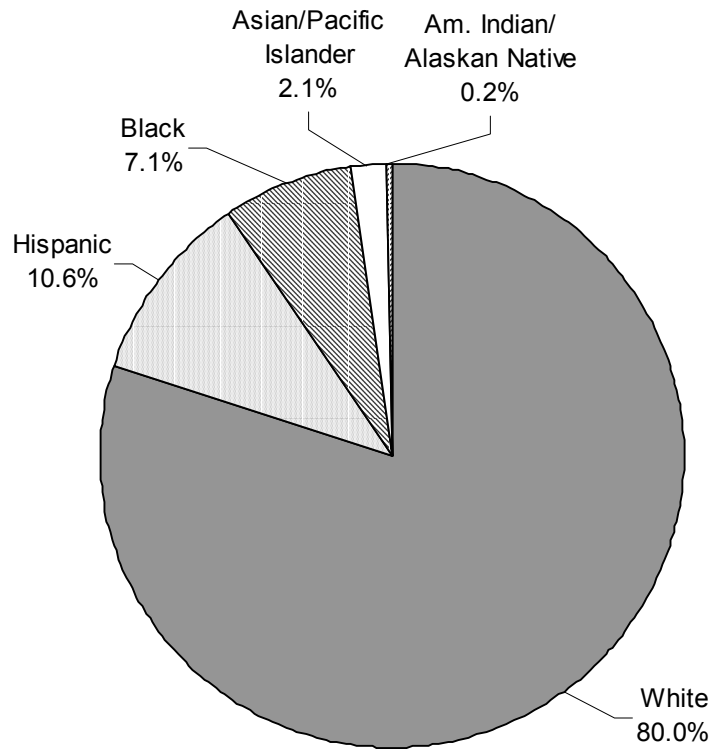
<b>Age</b>	<b>Male</b>		<b>Female</b>		<b>Total</b>	
<b>25-30</b>	2	0.5%	8	1.9%	10	2.4%
<b>31-35</b>	17	4.0%	14	3.3%	31	7.3%
<b>36-50</b>	70	16.5%	104	24.5%	174	41.0%
<b>51-64</b>	99	23.3%	104	24.5%	203	47.9%
<b>65 and Over</b>	6	1.4%	0	0.0%	6	1.4%
<b>TOTAL</b>	<b>194</b>	<b>45.8%</b>	<b>230</b>	<b>54.2%</b>	<b>424</b>	

\* Includes counselors, librarians, and temporary full-time faculty.

NOTE: Percents may not add to 100 due to rounding.

Source: Office of Human Resources

**Full-time Faculty by Ethnicity and Gender\*  
Fall 2001**



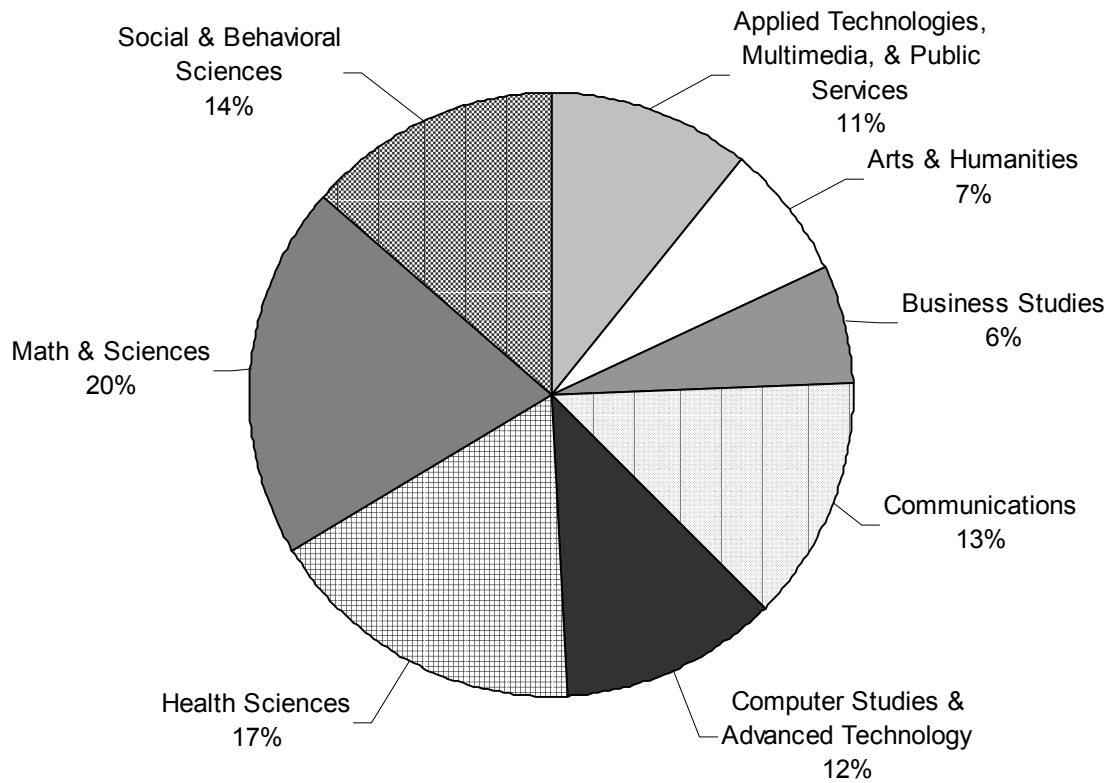
<b>Ethnicity</b>	<b>Male</b>		<b>Female</b>		<b>Total</b>	
<b>White</b>	151	35.6%	188	44.3%	339	80.0%
<b>Hispanic</b>	24	5.7%	21	5.0%	45	10.6%
<b>Black</b>	16	3.8%	14	3.3%	30	7.1%
<b>Asian/Pacific Islander</b>	2	0.5%	7	1.7%	9	2.1%
<b>Am. Indian/Alaskan Native</b>	1	0.2%	0	0.0%	1	0.2%
<b>Other/Unknown</b>	0	0.0%	0	0.0%	0	0.0%
<b>TOTAL</b>	<b>194</b>	<b>45.8%</b>	<b>230</b>	<b>54.2%</b>	<b>424</b>	

\* Includes counselors, librarians, and temporary full-time faculty.

NOTE: Percents may not add to 100 due to rounding.

Source: Office of Human Resources

**Full-time Faculty by Dean Area\*  
Fall 2001**



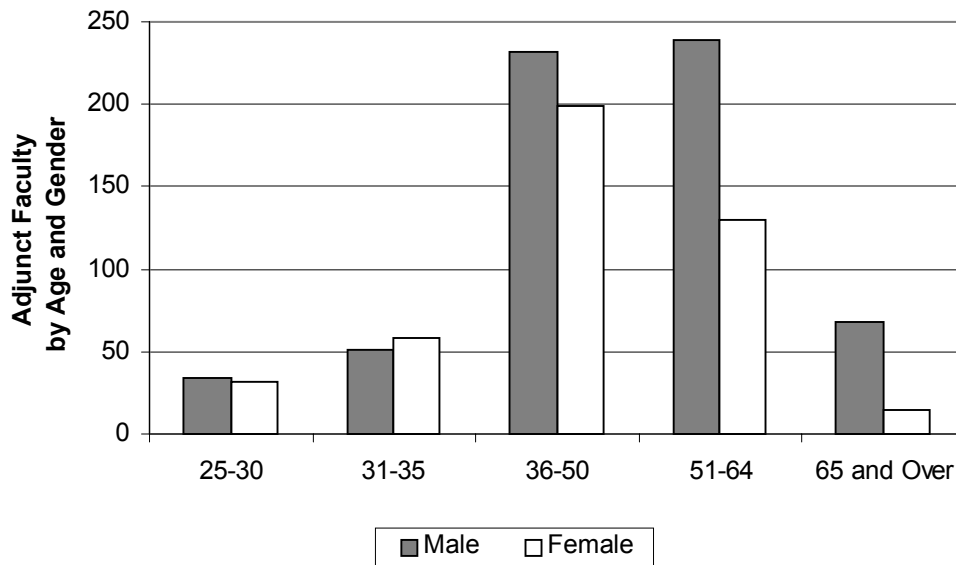
<b>Dean Area</b>	<b>Fall 2001</b>	<b>Percent of Total</b>
<b>Applied Technologies, Multimedia, &amp; Public Services</b>	42	10.9%
<b>Arts &amp; Humanities</b>	28	7.2%
<b>Business Studies</b>	25	6.5%
<b>Communications</b>	50	12.9%
<b>Computer Studies &amp; Advanced Technology</b>	45	11.6%
<b>Health Sciences</b>	67	17.3%
<b>Math &amp; Sciences</b>	77	19.9%
<b>Social &amp; Behavioral Sciences</b>	53	13.7%
<b>TOTAL</b>	<b>387</b>	

\* Includes only instructional faculty, including temporary full-time faculty.

NOTES: Duplicated headcounts. If faculty teach in more than one dean area, they are counted once in each area. Percents may not add to 100 due to rounding.

Source: ACC Computer System - uncertified data

**Adjunct Faculty by Age and Gender  
Fall 2001**

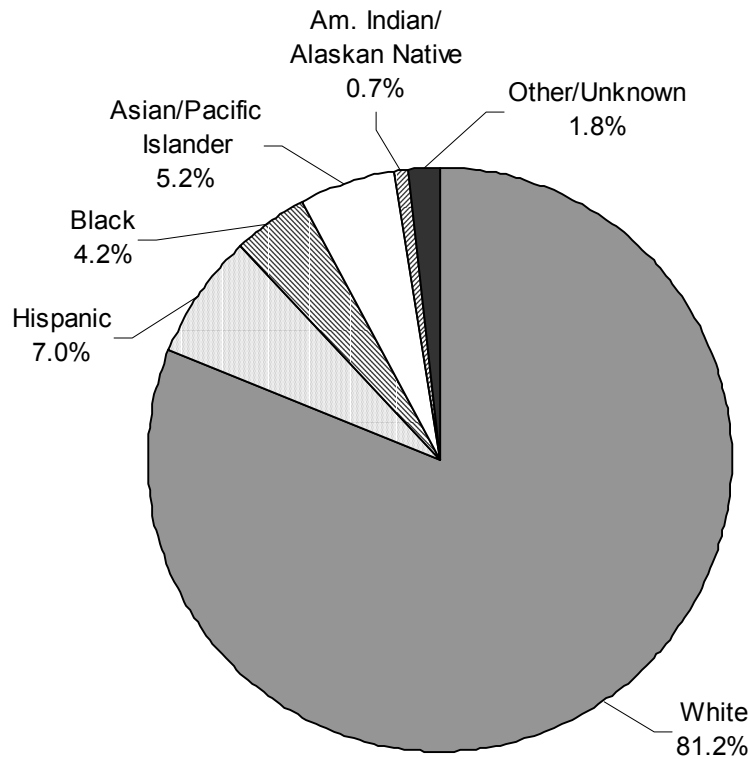


<b>Age</b>	<b>Male</b>		<b>Female</b>		<b>Total</b>	
<b>25-30</b>	34	3.2%	32	3.0%	66	6.2%
<b>31-35</b>	51	4.8%	58	5.5%	109	10.3%
<b>36-50</b>	232	21.9%	199	18.8%	431	40.7%
<b>51-64</b>	239	22.6%	130	12.3%	369	34.9%
<b>65 and Over</b>	68	6.4%	15	1.4%	83	7.8%
<b>TOTAL</b>	<b>624</b>	<b>59.0%</b>	<b>434</b>	<b>41.0%</b>	<b>1,058</b>	

NOTE: Percents may not add to 100 due to rounding.

Source: Office of Human Resources

**Adjunct Faculty by Ethnicity and Gender  
Fall 2001**

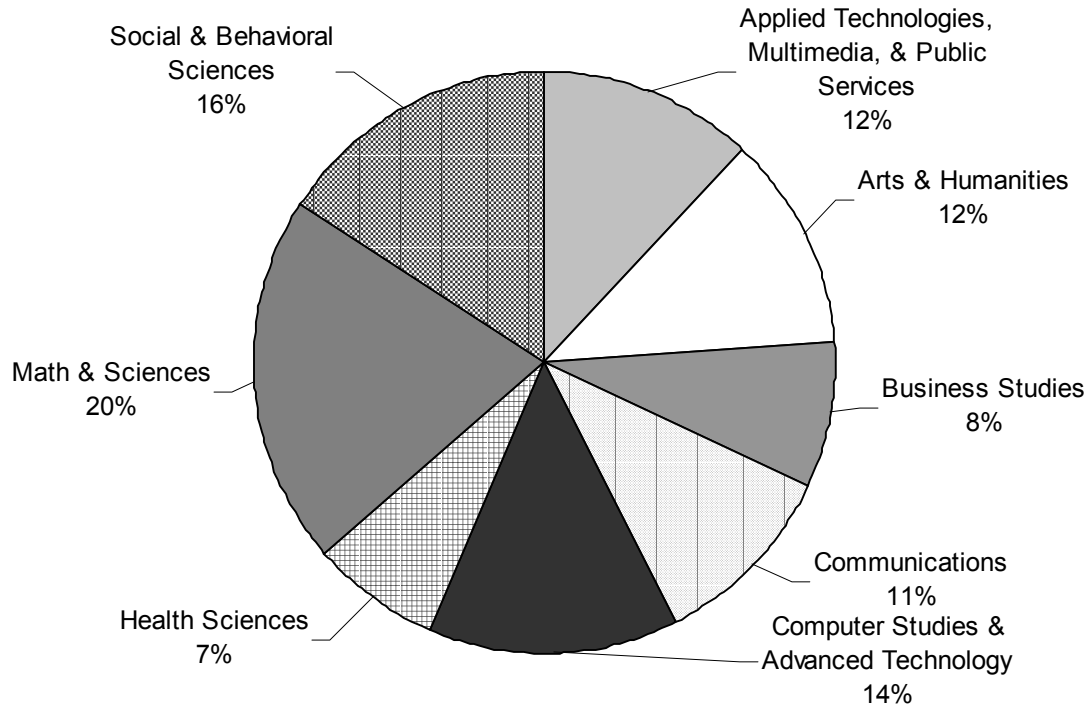


<b>Ethnicity</b>	<b>Male</b>		<b>Female</b>		<b>Total</b>	
<b>White</b>	502	47.4%	357	33.7%	859	81.2%
<b>Hispanic</b>	52	4.9%	22	2.1%	74	7.0%
<b>Black</b>	27	2.6%	17	1.6%	44	4.2%
<b>Asian/Pacific Islander</b>	32	3.0%	23	2.2%	55	5.2%
<b>Am. Indian/Alaskan Native</b>	4	0.4%	3	0.3%	7	0.7%
<b>Other/Unknown</b>	7	0.7%	12	1.1%	19	1.8%
<b>TOTAL</b>	<b>624</b>	<b>59.0%</b>	<b>434</b>	<b>41.0%</b>	<b>1,058</b>	

NOTE: Percents may not add to 100 due to rounding.

Source: Office of Human Resources

**Adjunct Faculty by Dean Area  
Fall 2001**



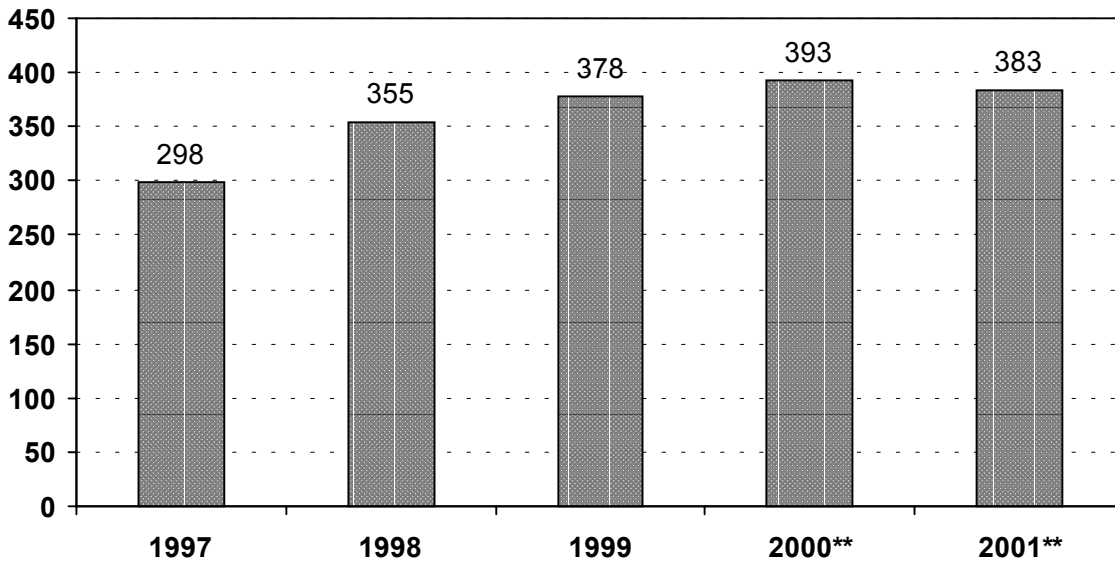
<b>Dean Area</b>	<b>Fall 2001</b>	<b>Percent of Total</b>
<b>Applied Technologies, Multimedia, &amp; Public Services</b>	145	12.0%
<b>Arts &amp; Humanities</b>	143	11.8%
<b>Business Studies</b>	96	8.0%
<b>Communications</b>	130	10.8%
<b>Computer Studies &amp; Advanced Technology</b>	167	13.8%
<b>Health Sciences</b>	86	7.1%
<b>Math &amp; Sciences</b>	250	20.7%
<b>Social &amp; Behavioral Sciences</b>	190	15.7%
<b>TOTAL</b>	<b>1,207</b>	

NOTES: Duplicated headcounts. If faculty teach in more than one dean area, they are counted once in each area. Percents may not add to 100 due to rounding.

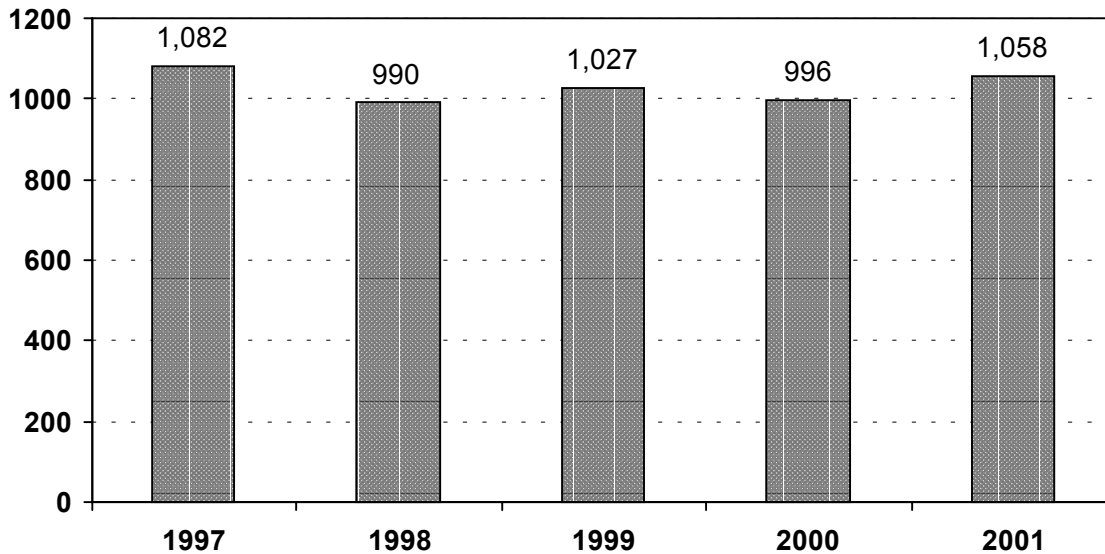
Source: ACC Computer System - uncertified data

**Credit Teaching Faculty\***  
**Fall 1997 - 2001**

**Full-time Teaching Faculty**



**Adjunct Faculty**



\* Credit teaching faculty include only instructors teaching credit courses. This excludes librarians and counselors who hold faculty status but are not teaching, and instructors in non-credit (continuing education) courses.

\*\* Includes adjunct faculty that are temporary full-time faculty.

NOTES: Unduplicated headcount. Faculty are counted once even though they may teach in more than one dean area.

Source: Office of Human Resources