

Section 9 Faculty & Staff

This section can be used for finding:

- the number of personnel by ethnicity, gender, and classification.
- the number of faculty by age, ethnicity, gender, and dean area.

Contents

Staffing Table Personnel by Classification 131

 Classified Personnel 132

 Administrative and Professional/Technical Personnel 132

Staffing Table Personnel by Ethnicity and Gender 133

 Classified Personnel 134

 Professional/Technical Personnel 135

 Administrative Personnel 136

 Grant Personnel 137

Faculty 138

 Full-time Faculty by Age and Gender 138

 Full-time Faculty by Ethnicity and Gender 139

 Full-time Faculty by Dean Area 140

 Adjunct Faculty by Age and Gender 141

 Adjunct Faculty by Ethnicity and Gender 142

 Adjunct Faculty by Dean Area 143

 Credit Teaching Faculty 144

Useful Terms

Adjunct Faculty - instructors in college credit and certificate programs who are appointed on a course-by-course basis.

Administrative Personnel - staffing table employees who are exempt from receiving overtime pay, are paid on a monthly basis, and are considered upper-management.

Classified Personnel - staffing table employees who are not exempt from receiving overtime pay and are paid on a bi-weekly basis.

Credit Teaching Faculty - only instructors teaching credit courses. This excludes librarians and counselors who hold faculty status but are not teaching, and instructors in non-credit (continuing education) courses.

Full-time Faculty - instructors in college credit programs, as well as counselors and librarians, who are employed by the college and are included in the staffing table.

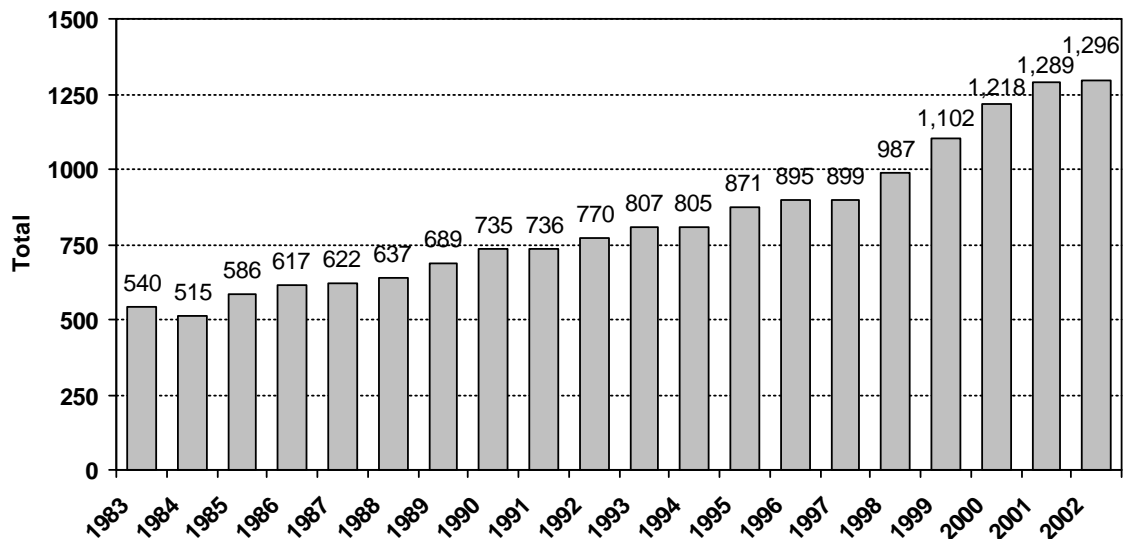
Professional/Technical Personnel - staffing table employees who are exempt from overtime pay and are paid on a monthly basis.

Staffing Table Personnel - non-grant employees who are eligible for benefits and accrue leave.

Temporary Full-Time Faculty - temporary faculty teaching for a full-time faculty member on sabbatical or leave without pay.

**Staffing Table Personnel by Classification
Fall 1983 - 2002**

Fall Semester	Full-time Faculty ¹	Admin. and Prof./Tech. ²	Classified	Total
1983	197	66	277	540
1984	192	50	273	515
1985	220	99	267	586
1986	222	105	290	617
1987	226	105	291	622
1988	235	112	290	637
1989	247	118	324	689
1990	261	132	342	735
1991	267	135	334	736
1992	271	149	350	770
1993	284	159	364	807
1994	308	147	350	805
1995	325	161	385	871
1996	336	203	356	895
1997	344	210	345	899
1998	355	232	400	987
1999	381	289	432	1,102 ³
2000	438	326	454	1,218
2001	424	366	499	1,289
2002	421	382	493	1,296



¹ Includes counselors and librarians, deans through 1999, and temporary full-time faculty beginning in 2000.

² Includes deans after 1999.

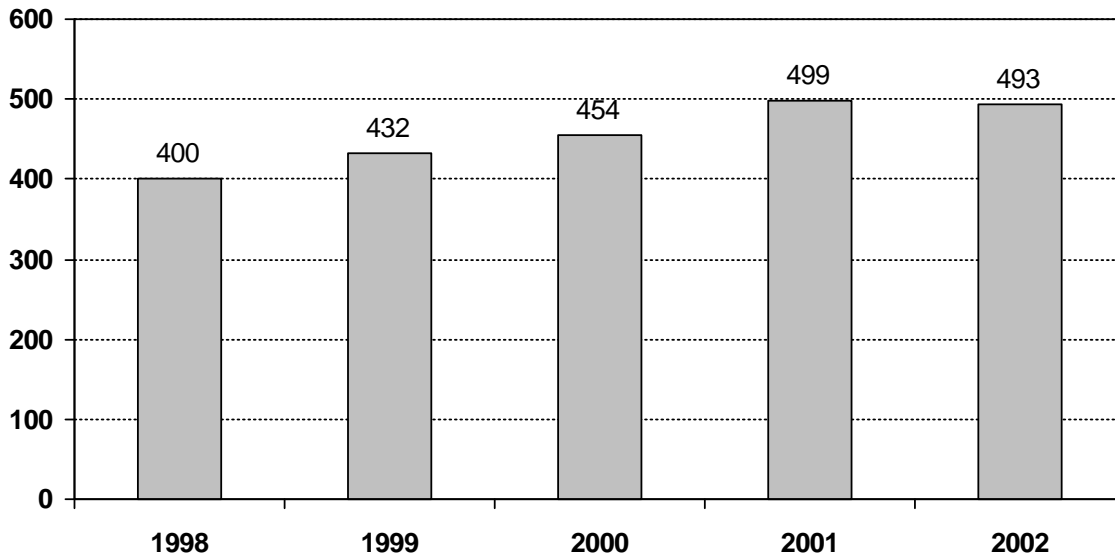
³ Increase reflects new faculty positions and conversion of hourly positions to staffing table positions.

NOTE: These numbers include staffing table positions only.

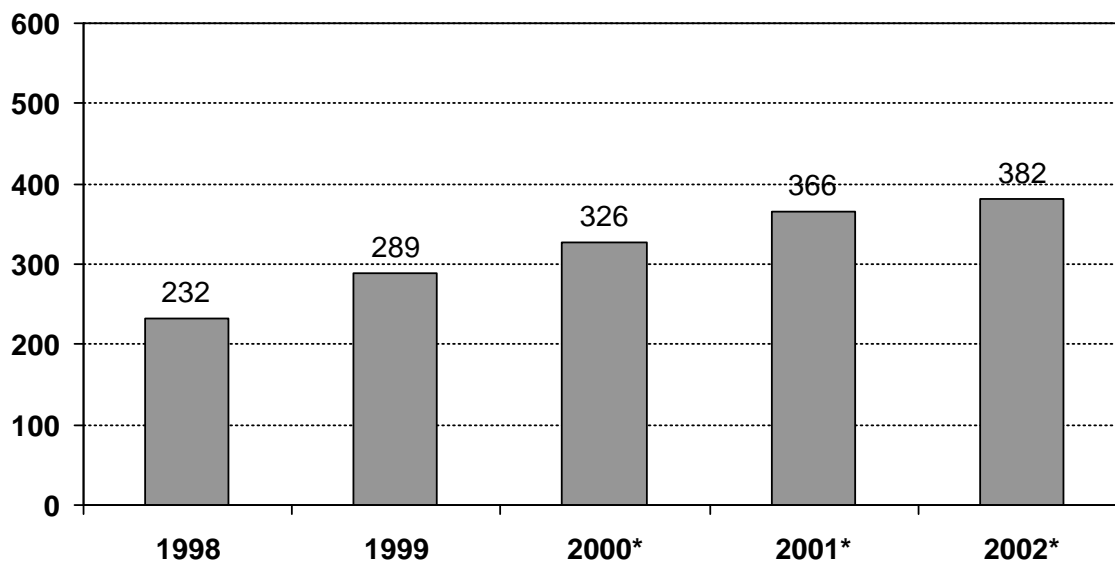
Source: Office of Human Resources

Staffing Table Personnel by Classification Fall 1998 - Fall 2002

Classified Personnel



Administrative and Professional/Technical Personnel

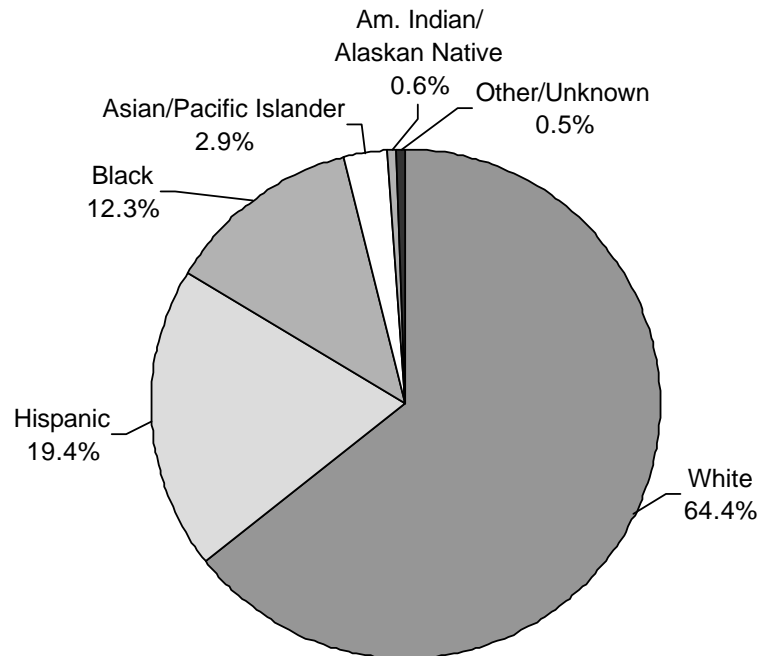


* Includes instructional deans after 1999.

Source: Office of Human Resources

**Staffing Table Personnel by Ethnicity and Gender
Fall 2002**

Total Staffing Table Personnel

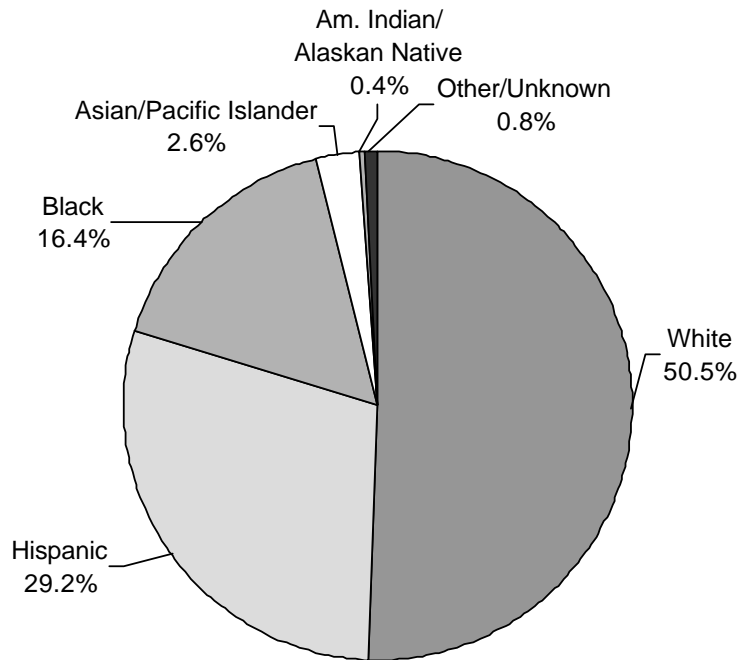


Ethnicity	Male		Female		Total	
White	357	27.5%	477	36.8%	834	64.4%
Hispanic	108	8.3%	143	11.0%	251	19.4%
Black	54	4.2%	105	8.1%	159	12.3%
Asian/Pacific Islander	15	1.2%	22	1.7%	37	2.9%
Am. Indian/Alaskan Native	5	0.4%	3	0.2%	8	0.6%
Other/Unknown	6	0.5%	1	0.1%	7	0.5%
TOTAL	545	42.1%	751	57.9%	1,296	

NOTE: These numbers only include staffing table positions (full-time faculty, classified, administrative and professional/technical personnel). Percents may not add to 100 due to rounding.

Source: Office of Human Resources

**Classified Personnel
Fall 2002**

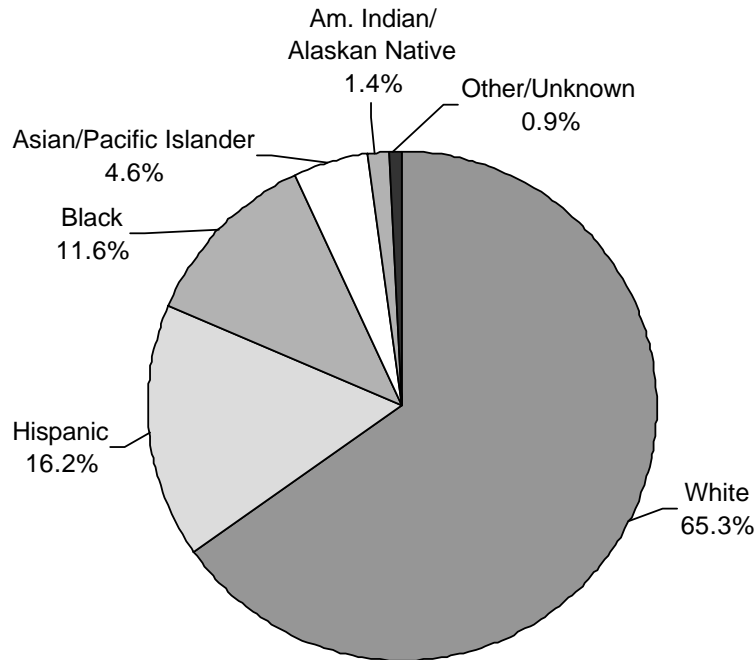


Ethnicity	Male		Female		Total	
White	102	20.7%	147	29.8%	249	50.5%
Hispanic	64	13.0%	80	16.2%	144	29.2%
Black	28	5.7%	53	10.8%	81	16.4%
Asian/Pacific Islander	5	1.0%	8	1.6%	13	2.6%
Am. Indian/Alaskan Native	2	0.4%	0	0.0%	2	0.4%
Other/Unknown	3	0.6%	1	0.2%	4	0.8%
TOTAL	204	41.4%	289	58.6%	493	

NOTE: Percents may not add to 100 due to rounding.

Source: Office of Human Resources

**Professional/Technical Personnel
Fall 2002**

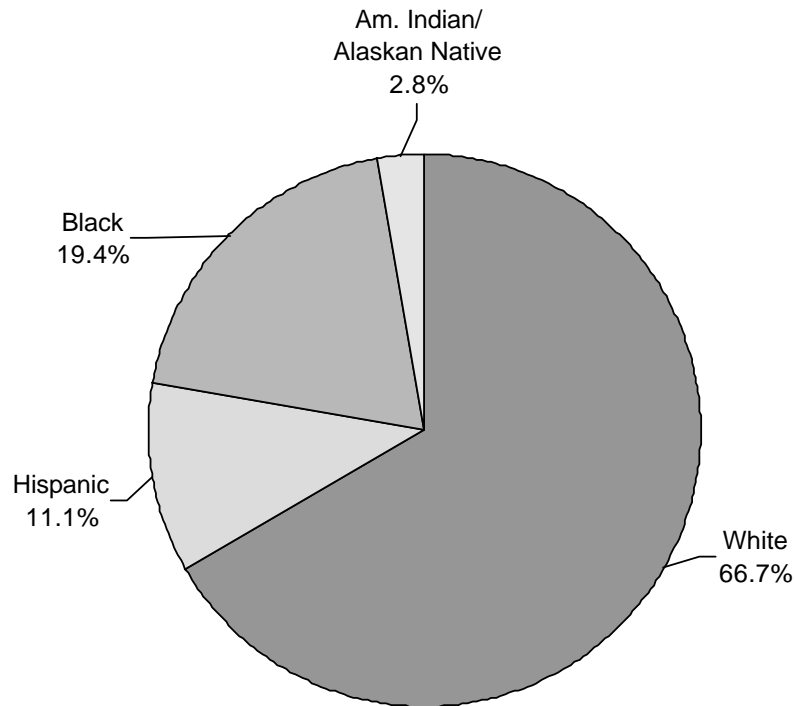


Ethnicity	Male		Female		Total	
White	92	26.6%	134	38.7%	226	65.3%
Hispanic	18	5.2%	38	11.0%	56	16.2%
Black	10	2.9%	30	8.7%	40	11.6%
Asian/Pacific Islander	8	2.3%	8	2.3%	16	4.6%
Am. Indian/Alaskan Native	3	0.9%	2	0.6%	5	1.4%
Other/Unknown	3	0.9%	0	0.0%	3	0.9%
TOTAL	134	38.7%	212	61.3%	346	

NOTE: Percents may not add to 100 due to rounding.

Source: Office of Human Resources

**Administrative Personnel*
Fall 2002**



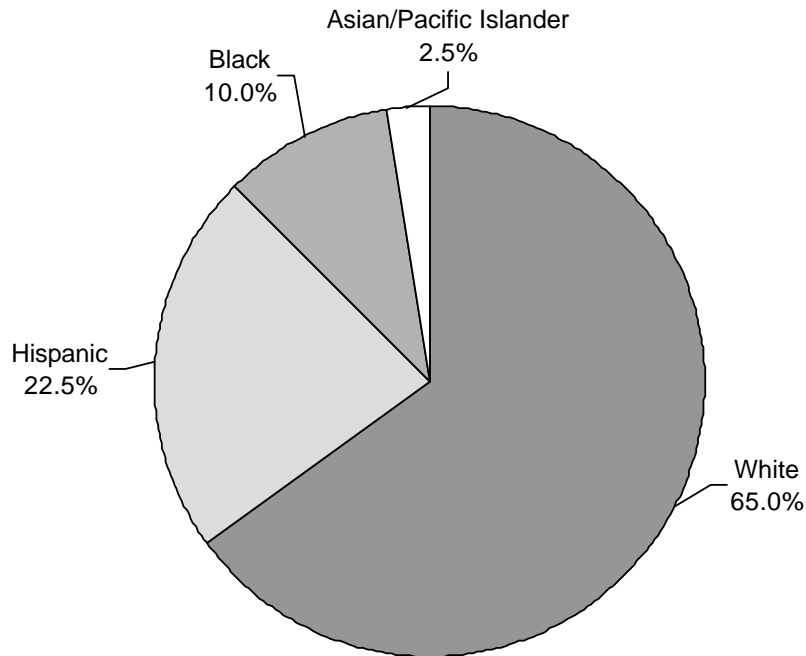
Ethnicity	Male		Female		Total	
White	13	36.1%	11	30.6%	24	66.7%
Hispanic	1	2.8%	3	8.3%	4	11.1%
Black	0	0.0%	7	19.4%	7	19.4%
Asian/Pacific Islander	0	0.0%	0	0.0%	0	0.0%
Am. Indian/Alaskan Native	0	0.0%	1	2.8%	1	2.8%
Other/Unknown	0	0.0%	0	0.0%	0	0.0%
TOTAL	14	38.9%	22	61.1%	36	

* Includes deans.

NOTE: Percents may not add to 100 due to rounding.

Source: Office of Human Resources

**Grant Personnel
Fall 2002**

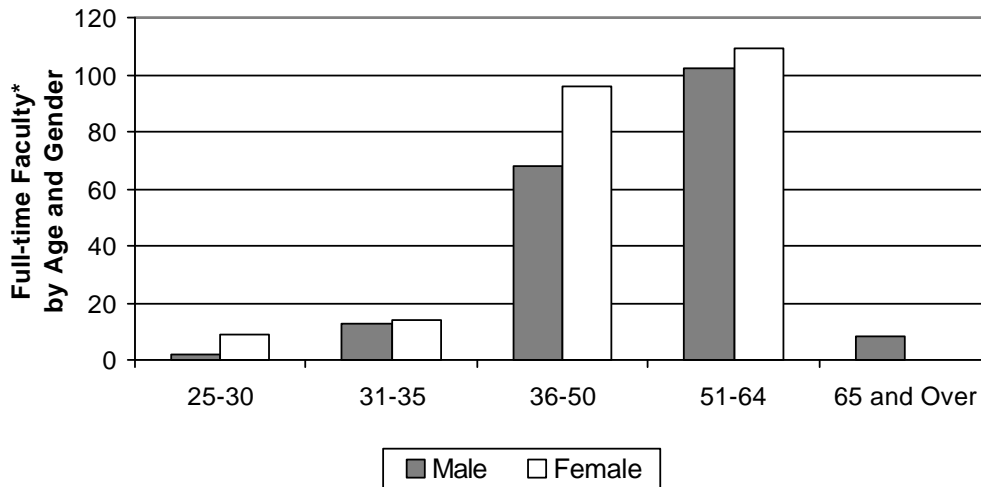


Ethnicity	Male		Female		Total	
White	10	25.0%	16	40.0%	26	65.0%
Hispanic	2	5.0%	7	17.5%	9	22.5%
Black	1	2.5%	3	7.5%	4	10.0%
Asian/Pacific Islander	0	0.0%	1	2.5%	1	2.5%
Am. Indian/Alaskan Native	0	0.0%	0	0.0%	0	0.0%
Other/Unknown	0	0.0%	0	0.0%	0	0.0%
TOTAL	13	32.5%	27	67.5%	40	

NOTES: Grant positions include college employees whose salaries are funded by government or private agency grants and contracts. They are not considered staffing table positions. Percents may not add to 100 due to rounding.

Source: Office of Human Resources

**Full-time Faculty* by Age and Gender
Fall 2002**



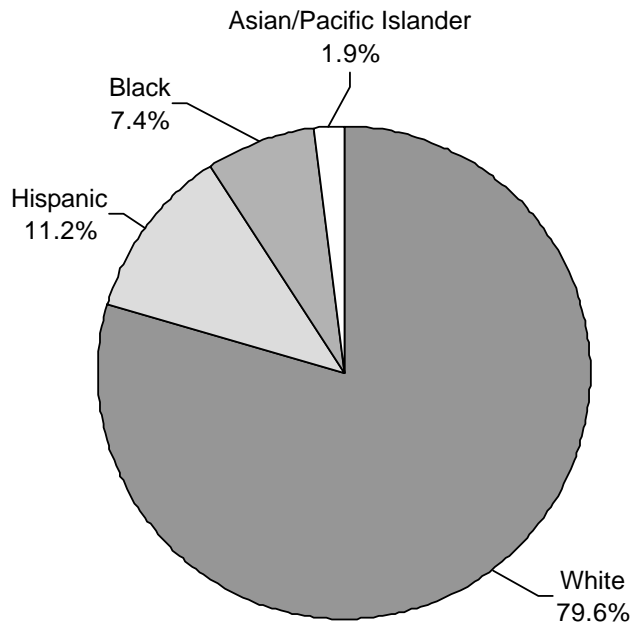
Age	Male		Female		Total	
25-30	2	0.5%	9	2.1%	11	2.6%
31-35	13	3.1%	14	3.3%	27	6.4%
36-50	68	16.2%	96	22.8%	164	39.0%
51-64	102	24.2%	109	25.9%	211	50.1%
65 and Over	8	1.9%	0	0.0%	8	1.9%
TOTAL	193	45.8%	228	54.2%	421	

* Includes counselors, librarians, and temporary full-time faculty.

NOTE: Percents may not add to 100 due to rounding.

Source: Office of Human Resources

**Full-time Faculty* by Ethnicity and Gender
Fall 2002**



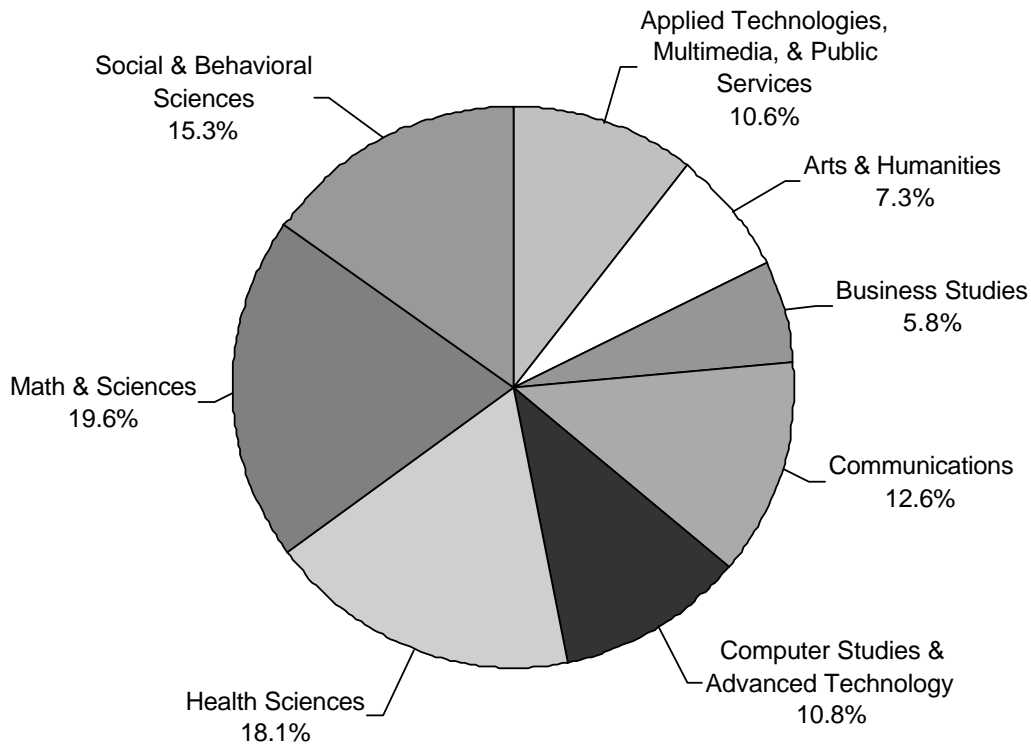
Ethnicity	Male		Female		Total	
White	150	35.6%	185	43.9%	335	79.6%
Hispanic	25	5.9%	22	5.2%	47	11.2%
Black	16	3.8%	15	3.6%	31	7.4%
Asian/Pacific Islander	2	0.5%	6	1.4%	8	1.9%
Am. Indian/Alaskan Native	0	0.0%	0	0.0%	0	0.0%
Other/Unknown	0	0.0%	0	0.0%	0	0.0%
TOTAL	193	45.8%	228	54.2%	421	

* Includes counselors, librarians, and temporary full-time faculty.

NOTE: Percents may not add to 100 due to rounding.

Source: Office of Human Resources

**Full-time Faculty by Dean Area*
Fall 2002**



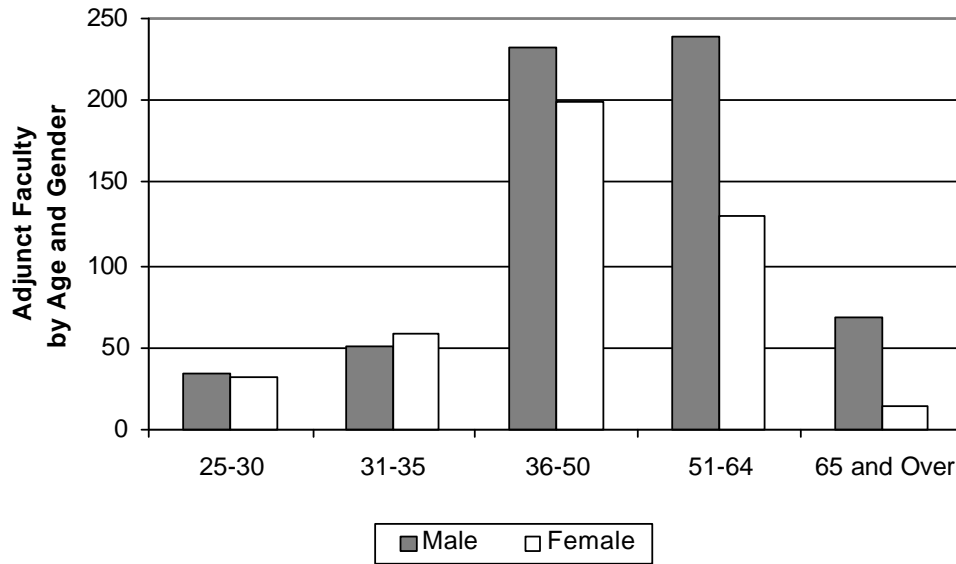
Dean Area	Fall 2002	Percent of Total
Applied Technologies, Multimedia, & Public Services	42	10.6%
Arts & Humanities	29	7.3%
Business Studies	23	5.8%
Communications	50	12.6%
Computer Studies & Advanced Technology	43	10.8%
Health Sciences	72	18.1%
Math & Sciences	78	19.6%
Social & Behavioral Sciences	61	15.3%
TOTAL	398	

* Includes all full-time faculty, including counselors, librarians, and temporary full-time faculty .

NOTES: Duplicated headcounts. If faculty teach in more than one dean area, they are counted once in each area. Percents may not add to 100 due to rounding.

Source: ACC Computer System - uncertified data

**Adjunct Faculty by Age and Gender
Fall 2002**

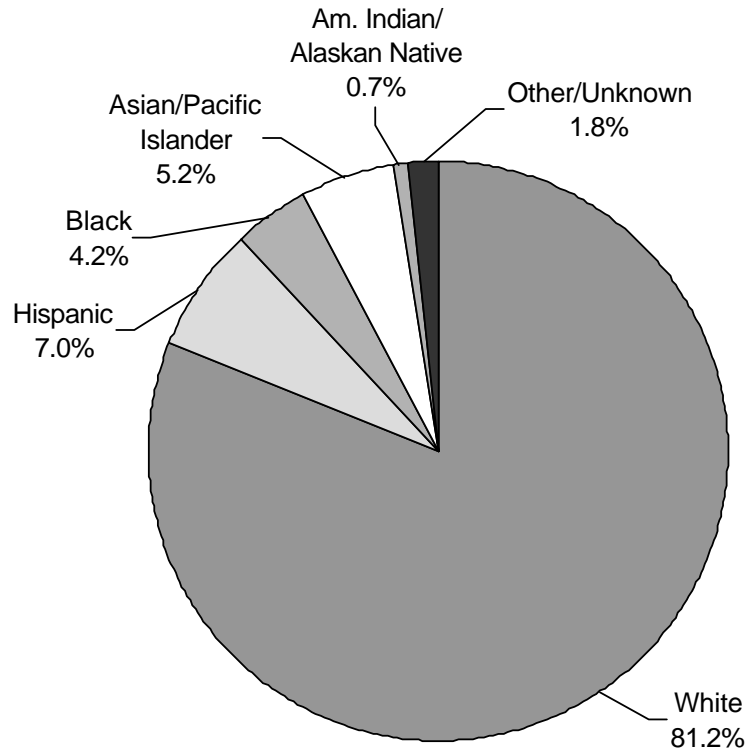


Age	Male		Female		Total	
25-30	34	3.2%	32	3.0%	66	6.2%
31-35	51	4.8%	58	5.5%	109	10.3%
36-50	232	21.9%	199	18.8%	431	40.7%
51-64	239	22.6%	130	12.3%	369	34.9%
65 and Over	68	6.4%	15	1.4%	83	7.8%
TOTAL	624	59.0%	434	41.0%	1,058	

NOTE: Percents may not add to 100 due to rounding.

Source: Office of Human Resources

**Adjunct Faculty by Ethnicity and Gender
Fall 2002**

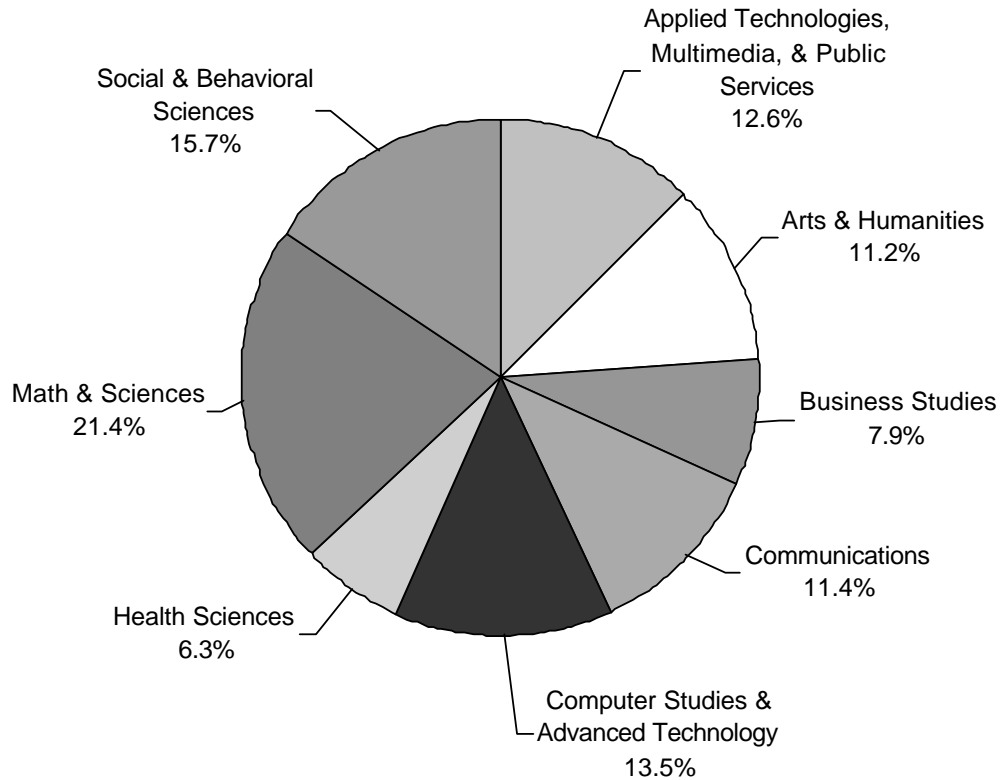


Ethnicity	Male		Female		Total	
White	502	47.4%	357	33.7%	859	81.2%
Hispanic	52	4.9%	22	2.1%	74	7.0%
Black	27	2.6%	17	1.6%	44	4.2%
Asian/Pacific Islander	32	3.0%	23	2.2%	55	5.2%
Am. Indian/Alaskan Native	4	0.4%	3	0.3%	7	0.7%
Other/Unknown	7	0.7%	12	1.1%	19	1.8%
TOTAL	624	59.0%	434	41.0%	1,058	

NOTE: Percents may not add to 100 due to rounding.

Source: Office of Human Resources

**Adjunct Faculty by Dean Area
Fall 2002**



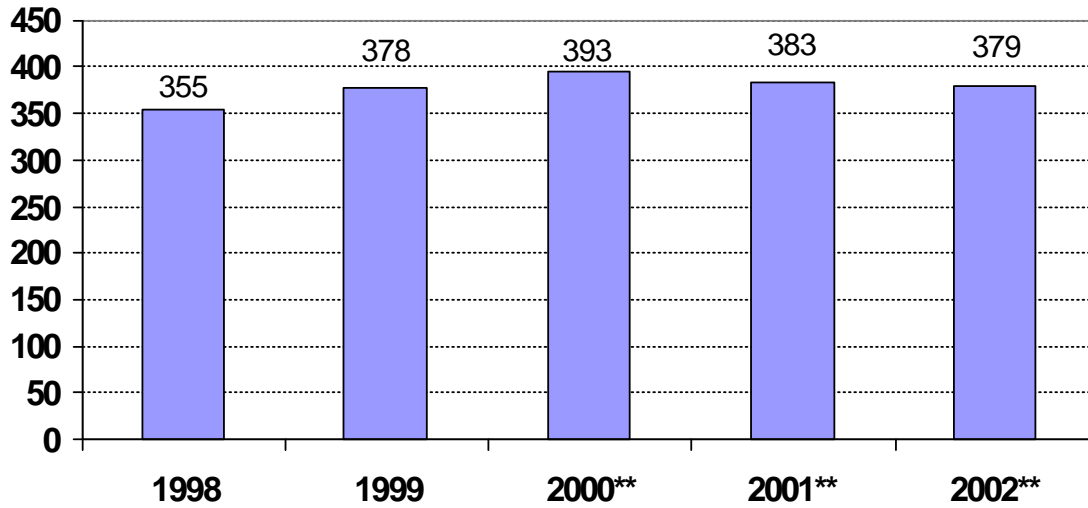
Dean Area	Fall 2002	Percent of Total
Applied Technologies, Multimedia, & Public Services	154	12.6%
Arts & Humanities	136	11.2%
Business Studies	96	7.9%
Communications	139	11.4%
Computer Studies & Advanced Technology	165	13.5%
Health Sciences	77	6.3%
Math & Sciences	261	21.4%
Social & Behavioral Sciences	191	15.7%
TOTAL	1,219	

NOTES: Duplicated headcounts. If faculty teach in more than one dean area, they are counted once in each area. Percents may not add to 100 due to rounding.

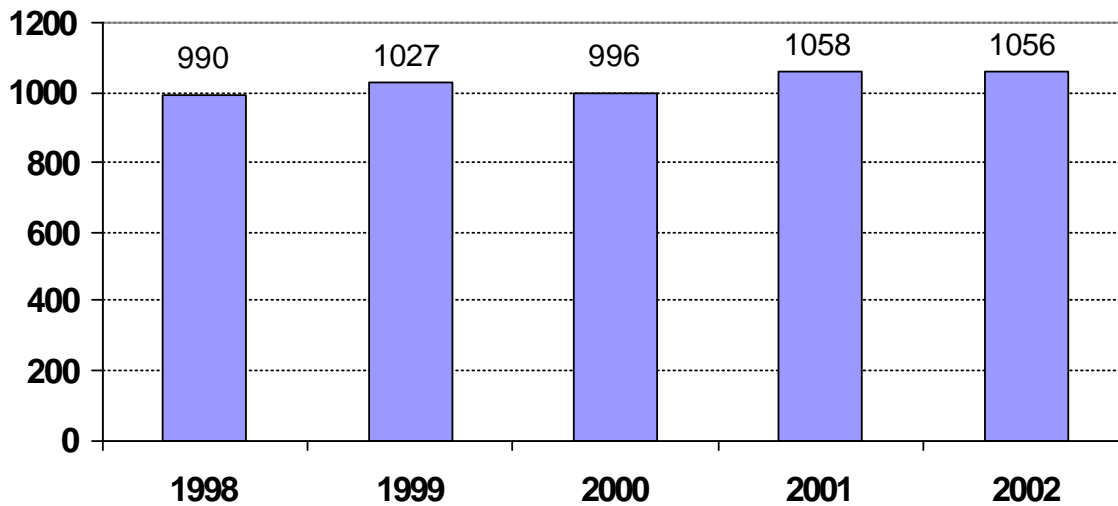
Source: ACC Computer System - uncertified data

Credit Teaching Faculty*
Fall 1998 - 2002

Full-time Teaching Faculty



Adjunct Faculty



* Credit teaching faculty include only instructors teaching credit courses. This excludes librarians and counselors who hold faculty status but are not teaching, and instructors in non-credit (continuing education) courses.

** Includes adjunct faculty who are temporary full-time faculty.

NOTES: Unduplicated headcount. Faculty are counted once even though they may teach in more than one dean area.

Source: Office of Human Resources