

Section 7

Continuing Education

This section can be used for finding:

- *information on continuing education programs.*
- *which organizations offer service and training through community partnerships.*
- *demographic information on Continuing Education students.*
- *enrollment information on Continuing Education classes.*

Contents

Summary	110
Overview	111
Academic Year 2004 Programs	112
Community Partnerships	112
Annual Headcount by Age	113
Annual Headcount by Gender	114
Annual Headcount by Ethnicity	115
Annual Headcount by Zip Code	116
Annual Headcount by Zip Code Map	119
Course Enrollment by Location	120
Course Enrollment by Program Area	121

Useful Terms

Headcount - the number of students enrolled in one or more courses. This number may be duplicated or unduplicated.

Enrollment - the number of students enrolled in a course.

Continuing Education Summary

- The Continuing Education headcount at Austin Community College (ACC) increased 21% from 8,637 in academic year 2003 to 10,435 in academic year 2004.
- Female participation in Continuing Education courses accounted for over 60% of all Continuing Education students in academic year 2004.
- Academic year 2004 saw an increase in minority Continuing Education enrollment. Hispanics and Blacks comprised 26% of all Continuing Education students in academic year 2003; in academic year 2004, these two ethnic groups accounted for 28% of Continuing Education students.
- Continuing Education course enrollments increased 23% in academic year 2004 compared to the previous academic year (14,203 course enrollments in academic year 2003; 17,401 course enrollments in academic year 2004).
- Examination of Continuing Education course enrollments by location for academic year 2004 revealed that the Highland Business Center accounted for 68% of all course enrollments, an increase of 3% from the previous academic year. The Riverside campus accounted for another 7%, a decline of 2% from the previous academic year.
- An analysis of Continuing Education course enrollments by program area revealed:
 - A large increase in Customized Training enrollments. Overall, there was a 91% increase in enrollments between academic years 2003 and 2004 (1,686 enrollments in academic year 2003, and 3,216 enrollments in academic year 2004).
 - An increase in Computer Applications enrollments. Overall, there was a 20% increase in enrollments between academic years 2003 and 2004 (1,844 enrollments in academic year 2003, and 2,222 enrollments in academic year 2004).
 - An increase in Health Professions Institute enrollments. Overall, there was a 17% increase in enrollments between academic years 2003 and 2004 (3,769 enrollments in academic year 2003, and 4,417 enrollments in academic year 2004).

Continuing Education Overview

Continuing Education programs at Austin Community College are conducted in the following areas:

Alternative Teacher Certification provides training for those with a Bachelor's degree and subject competency to become teachers in Texas. Approved by the State Board for Educator Certification in August 2003, this 15-month program covers educational courses and subject content areas. Candidates enter an internship as a first year teacher and finish with a teaching certificate. The ATC program also provides professional development and additional certifications, training for instructional aides, online substitute teacher training, and child care classes.

Community Programs provides lifelong learning opportunities over a wide range of areas. Although vocational training is a major portion of the class offerings, there are a variety of other programs offered through partnerships with community organizations, as well as a wide range of programs that promote lifelong learning. Community Programs' offerings change as the needs and interests of the community change.

Customized Training provides needs analysis, assessment, and customized training solutions to organizations, businesses, and governmental agencies to improve the job performance and productivity of their employees. Training programs are tailored to the needs of the organization and/or industry and can be delivered on-site, at the College, in a virtual classroom, or to the desktop.

The Health Professions Institute's provides a variety of innovative, responsive healthcare educational opportunities through various delivery methods to meet workforce development needs related to new and emerging roles in the healthcare arena; and partners with the local healthcare industry in support of the health, safety, and wellness of the community. HPI also co-sponsors seminars with other organizations, by providing continuing education credit for nurses, emergency medical personnel, long term care administrators, licensed chemical dependency counselors, dental professionals, and many other professional disciplines.

Workforce Continuing Education provides business development, job entry preparation, and professional continuing education courses designed to meet the training and education needs of employers, the current workforce, and the emerging worker. Workforce Continuing Education also houses the High Technology Institute that provides skills and certifications in the latest technical programs and processes. Classes are taught in both the traditional classroom setting and through online offerings and other distance learning opportunities.

Continuing Education Academic Year 2004 Programs

Alternative Teacher Certification

- Substitute Teacher
- ParaEducator Institute
- Professional Development for Teachers

Community Programs

- Arts and Crafts
- Summer Programs
- Assessment Test Preparation
- Building Construction
- Horticulture and Landscaping
- Floral Design
- Religion
- Driving Safety
- Financial Programs
- Music
- Personal Enrichment
- Photography
- Sports and Recreation
- Trips and Tours
- Writing Institute
- Alcohol Servers Certification
- Home and Gardens

Customized Training

- Contract Classes for Business, Industry, Organizations and Governmental Agencies
- ACT Training Center

Health Professions Institute

- Allied Health Care Courses
- Basic Certificates (Entry-level)
- Advanced Certificates
- Special Certificates
- Independent Study Courses
- Distance Learning Courses
- Professional Continuing Health Care Education

Workforce Continuing Education

- Business Development
- Career Advancement Courses
- High Technology Institute
- Job Entry Preparation Training
- Institute of Language and Culture
- Management and Supervision Courses
- Professional Continuing Education
- Truck Driving
- Apprenticeship
- Earth Moving Equipment Operation

Community Partnerships

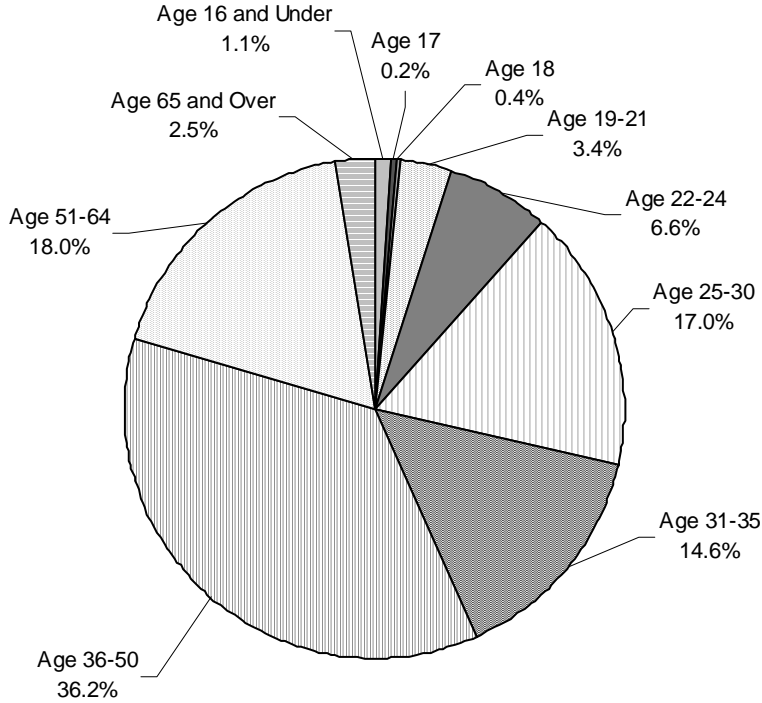
Continuing Education welcomes partnerships that provide service and training to the community. Examples of community partnerships currently in place are:

ACT Training Center
American Heart Association
Armstrong Community Music School of the Austin Lyric Opera
Association of Contingency Planners
Austin APICS
Austin Information Systems Security Association
Austin Project Management Institute
Austin Travis County Mental Health and Mental Retardation
Austin District Dental Hygienist's Society

Austin Chapter of the Texas Association of Addiction Professionals
Bass Master University
Entertech
International Schools Professional Driver Training
Localization Advisory Board
Seton Healthcare Network
State Theatre School of Acting
St. David's Healthcare Partnership

Source: Office of Continuing Education

**Continuing Education
Annual Headcount by Age
Academic Year 2004**

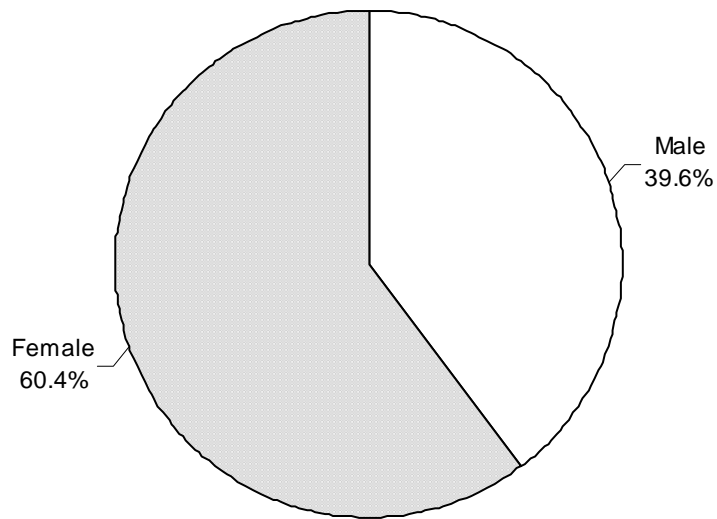


Age	2003-04	Percent of Total
16 and Under	120	1.1%
17	17	0.2%
18	37	0.4%
19-21	359	3.4%
22-24	684	6.6%
25-30	1,779	17.0%
31-35	1,525	14.6%
36-50	3,778	36.2%
51-64	1,875	18.0%
65 and Over	261	2.5%
TOTAL	10,435	

NOTE: Percents may not add to 100 due to rounding.

Source: Office of Continuing Education

**Continuing Education
Annual Headcount by Gender
Academic Year 2004**

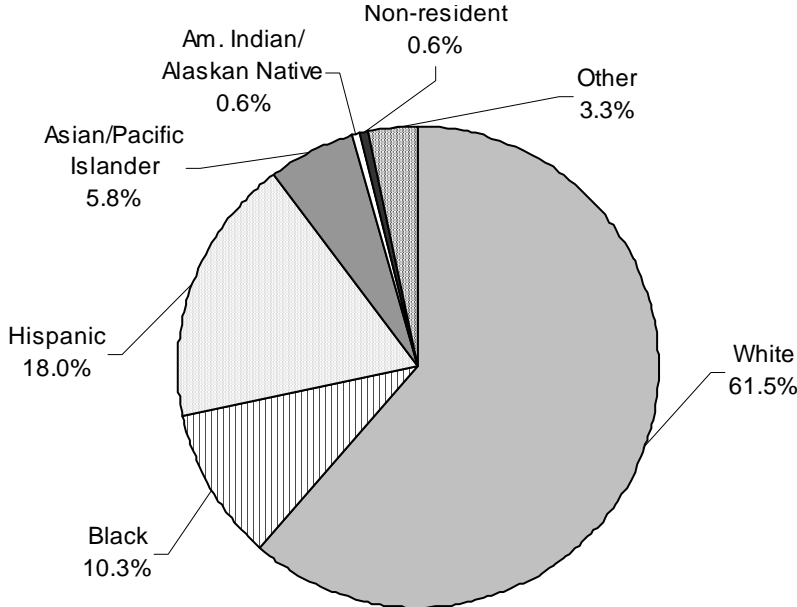


<u>Gender</u>	<u>2003-04</u>	<u>Percent of Total</u>
Male	4,137	39.6%
Female	6,298	60.4%
TOTAL	10,435	

NOTE: Percents may not add to 100 due to rounding.

Source: Office of Continuing Education

**Continuing Education
Annual Headcount by Ethnicity
Academic Year 2004**



Ethnicity	2003-04	Percent of Total
White	6,417	61.5%
Black	1,073	10.3%
Hispanic	1,880	18.0%
Asian/Pacific Islander	603	5.8%
Am. Indian/Alaskan Native	58	0.6%
Non-resident	58	0.6%
Other	346	3.3%
TOTAL	10,435	

NOTE: Percents may not add to 100 due to rounding.

Source: Office of Continuing Education

**Continuing Education
Annual Headcount by Zip Code
Academic Year 2004**

<u>Region</u>	<u>Zip Code</u>	<u>2003-04</u>	<u>Region</u>	<u>Zip Code</u>	<u>2003-04</u>
Austin, Central			Austin/Travis County, South		
Austin	78701	96	Manchaca	78652	21
Austin	78703	180	Austin	78704	449
Austin	78705	124	Austin	78745	508
Austin	78712	1	Austin	78748	277
Austin	78751	117	Total		1,255
Austin	78752	143	% of Grand Total		12.0%
Austin	78756	78			
Austin	78757	239	Austin/Travis County, Southeast		
Total		978	Del Valle	78617	54
% of Grand Total		9.4%	Austin	78719	7
			Austin	78741	271
Austin, East			Austin	78742	5
Austin	78702	144	Austin	78744	193
Austin	78721	64	Austin	78747	72
Austin	78722	71	Total		602
Austin	78723	212	% of Grand Total		5.8%
Total		491	Austin/Travis County, Southwest		
% of Grand Total		4.7%	Austin	78735	65
			Austin	78736	43
Austin, North			Austin	78739	67
Austin	78727	296	Austin	78746	129
Austin	78728	119	Austin	78749	268
Austin	78758	497	Total		572
Total		912	% of Grand Total		5.5%
% of Grand Total		8.7%			
			Austin, Northwest		
Austin	78726	77	Austin	78726	77
Austin	78730	33	Austin	78730	33
Austin	78731	233	Austin	78731	233
Austin	78750	184	Austin	78750	184
Austin	78759	459	Austin	78759	459
Total		986	Total		986
% of Grand Total		9.4%	% of Grand Total		9.4%

NOTE: Headcount is based on zip code data as reported and entered in the ACC database. Zip code regions are based on definitions developed by ACC administration.

Source: Office of Continuing Education

**Continuing Education
Annual Headcount by Zip Code (continued)
Academic Year 2004**

Region	Zip Code	2003-04	Region	Zip Code	2003-04
Bastrop County*			Caldwell County*		
Bastrop	78602	71	Dale	78616	16
Cedar Creek	78612	38	Lockhart	78644	33
Elgin	78621	60	Luling	78648	6
McDade	78650	6	Martindale	78655	7
Paige	78659	8	Maxwell	78656	8
Red Rock	78662	8			
Rosanky	78953	3	Total		70
Smithville	78957	28	% of Grand Total		0.7%
Total		222	Cedar Park/Leander		
% of Grand Total		2.1%	Cedar Park	78613	425
			Leander	78641	222
			Liberty Hill	78642	27
			Total		674
			% of Grand Total		6.5%
Blanco County*			Georgetown/North Williamson County		
Blanco	78606	7	Florence	76527	16
Hye	78635	0	Granger	76530	17
Johnson City	78636	6	Jarrell	76537	15
Total		13	Georgetown	78626	111
% of Grand Total		0.1%	Georgetown	78628	185
			Total		344
			% of Grand Total		3.3%
Burnet County*			Gillespie County*		
Bertram	78605	5	Doss	78618	0
Burnet	78611	14	Fredericksburg	78624	11
Marble Falls	78654	23	Stonewall	78671	0
Total		42	Total		11
% of Grand Total		0.4%	% of Grand Total		0.1%

* These numbers do not represent total headcount for the county due to zip codes that span more than one county.

NOTE: Headcount is based on zip code data as reported and entered in the ACC database. Zip code regions are based on definitions developed by ACC administration.

Source: Office of Continuing Education

**Continuing Education
Annual Headcount by Zip Code (continued)
Academic Year 2004**

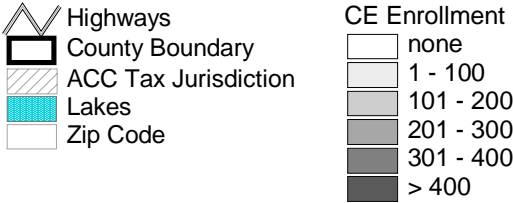
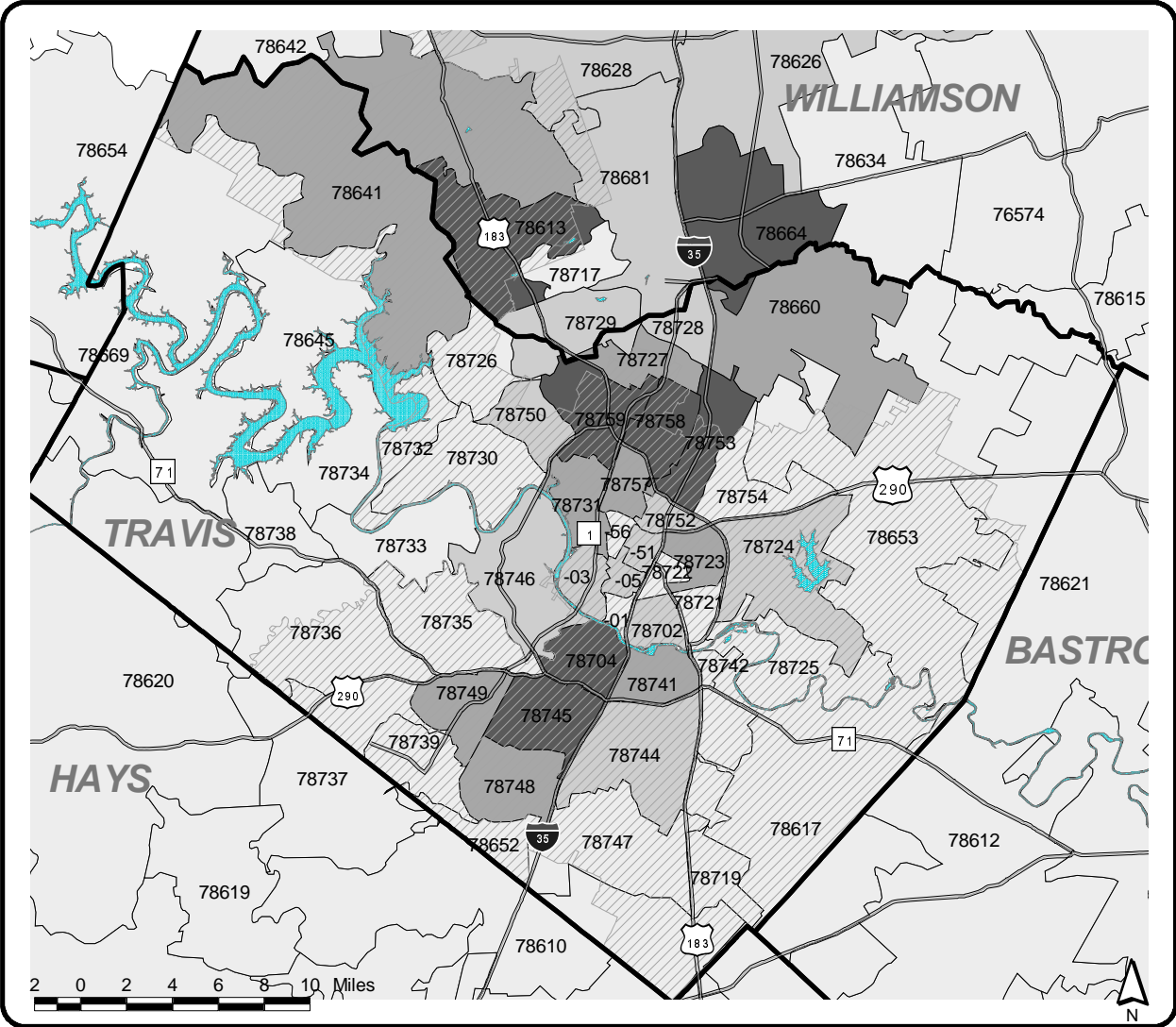
Region	Zip Code	2003-04	Region	Zip Code	2003-04
Hays County*			Taylor/Hutto/East Williamson County		
Buda	78610	58	Taylor	76574	56
Driftwood	78619	8	Thrall	76578	4
Dripping Springs	78620	54	Coupland	78615	3
Kyle	78640	79	Hutto	78634	55
San Marcos	78666	119	Total		118
Wimberley	78676	30	%of Grand Total		1.1%
Austin	78737	47			
Total		395	West Travis County		
%of Grand Total		3.8%	Leander	78645	77
			Spicewood	78669	24
Manor/East Travis County			Austin	78732	30
Manor	78653	61	Austin	78733	27
Austin	78724	106	Austin	78734	46
Austin	78725	26	Austin	78738	18
Total		193	Total		222
%of Grand Total		1.8%	%of Grand Total		2.1%
			Other/Unknown		
Pflugerville/Northeast Travis County					722
Pflugerville	78660	241	%of Grand Total		6.9%
Austin	78753	424			
Austin	78754	81	Grand Total		10,435
Total		746			
%of Grand Total		7.1%			
Round Rock					
Round Rock	78664	439			
Round Rock	78681	192			
Austin	78717	68			
Austin	78729	168			
Total		867			
%of Grand Total		8.3%			

* These numbers do not represent total headcount for the county due to zip codes that span more than one county.

NOTE: Headcount is based on zip code data as reported and entered in the ACC database. Zip code regions are based on definitions developed by ACC administration.

Source: Office of Continuing Education

Continuing Education Annual Headcount by Zip Code Map Academic Year 2004



NOTE: Headcount is based on zip code data as reported and entered in the ACC database.

Source: Office of Continuing Education

**Continuing Education
Course Enrollment by Location
Academic Year 2004**

Location	2003-04	Percent
Akins High School	32	0.2%
Armstrong School of Music	0	0.0%
Art Glass Fusing Center	72	0.4%
Associated Builders and Contractors	137	0.8%
Austin Recreation Center	74	0.4%
Austin-Heartland Health Center	77	0.4%
Bastrop High School	18	0.1%
Ben White Golf Driving Range	17	0.1%
Blood & Tissue Center	6	0.0%
Bob Wentz Park	9	0.1%
Carpenter's Hall (JATC)*	36	0.2%
Cypress Creek	316	1.8%
Eastview Campus	604	3.5%
Fredericksburg	1	0.0%
Georgetown High School	128	0.7%
Georgetown Wesleyan Nursing	33	0.2%
Golden Vista Equestrian Center	78	0.4%
Govalle Care Center	22	0.1%
Highland Business Center	11,866	68.2%
Image Stained Glass Studio	11	0.1%
Intertech Flooring	47	0.3%
Iron Worker (JATC)*	92	0.5%
Lanier High School	52	0.3%
Mecca Gym and Spa	7	0.0%
North Lamar Fitness	3	0.0%
Northridge Campus	437	2.5%
Offsite	326	1.9%
Open Campus	54	0.3%
Pinnacle	150	0.9%
Rio Grande	242	1.4%
Riverside Campus	1,230	7.1%
Rock About	8	0.0%
San Marcos Arboretum	19	0.1%
San Marcos Center	62	0.4%
Service Center	31	0.2%
Sheet Metal Workers (JATC)*	62	0.4%
Skill Center - Rio Grande	299	1.7%
State Theater School of Acting	346	2.0%
Stonebridge Health Center	9	0.1%
Texas Rowing Center	24	0.1%
Travis County Community Justice Center	173	1.0%
Williamson County Workforce Center	183	1.1%
YMCA Northpark	8	0.0%
	17,401	

* JATC is an abbreviation for Joint Apprenticeship and Training Committees.

NOTE: Students who enroll in more than one course are counted once for each course. Percents may not add to 100 due to rounding.

Source: Office of Continuing Education

**Continuing Education
Course Enrollment by Program Area
Academic Year 2004**

Program Area	2003-04	Percent of Total
Apprenticeship	361	2.1%
Austin Quality	54	0.3%
Business Development	257	1.5%
Career Advancement	2,410	13.8%
Community Programs	1,917	11.0%
Computer Applications	2,222	12.8%
Customized Training	3,216	18.5%
Health Professions Institute	4,417	25.4%
Independent Study	124	0.7%
Job Entry Preparation	841	4.8%
Management and Supervision	43	0.2%
Teacher Certification	675	3.9%
Technical Certification	493	2.8%
Truck Driving	371	2.1%
TOTAL	17,401	

NOTE: Students who enroll in more than one course are counted once for each course. Percents may not add to 100 due to rounding.

Source: Office of Continuing Education