

Section 9

Continuing Education

This section can be used for finding:

- *information on continuing education programs.*
- *which organizations offer service and training through community partnerships.*
- *demographic information on Continuing Education students.*
- *enrollment information on Continuing Education classes.*

Contents

Overview	135
Academic Year Programs	136
Community Partnerships	136
Annual Headcount by Age	137
Annual Headcount by Gender	138
Annual Headcount by Ethnicity	139
Annual Headcount by Zip Code	140
Annual Headcount by Zip Code Map	143
Course Enrollment by Location	144
Course Enrollment by Program Area	145

Useful Terms

Headcount - the number of students enrolled in one or more courses. This number may be duplicated or unduplicated.

Enrollment - the number of students enrolled in a course.

Continuing Education Overview

Continuing Education programs at Austin Community College are conducted in the following areas:

Alternative Teacher Certification provides training for those with a Bachelor's degree and subject competency to become teachers in Texas. Approved by the State Board for Educator Certification in August 2003, this 15-month program covers educational courses and subject content areas. Candidates enter an internship as a first year teacher and finish with a teaching certificate. The ATC program also provides professional development and additional certifications, training for instructional aides, online substitute teacher training, and child care classes.

Community Programs provides training and development designed to meet the needs of students locally. There are a variety of programs offered to challenge the creative mind, increase and refine vocational skills, and develop individuals personally. Community Programs provides a wide range of programs that promote lifelong learning. The Home and Garden program was awarded a National Exemplary Program Award. The Interior Design Institute, Floral Design program, and Landscape Design and Horticulture programs are premier training for individual wanting to enter the specific industries. Other programs include recreational courses, arts and crafts, photography, financial seminars, State Theatre classes, Assessment Test Prep and many more.

Customized Training provides a variety of programs offered to challenge the creative mind, increase and refine vocational skills, and develop individuals personally. Community Programs provides a wide range of programs that promote lifelong learning. The Home and Garden program was awarded a National Exemplary Program Award.

Interior Design Institute includes Floral Design, Landscape Design, and Horticulture programs are premier training for individuals wanting to enter the specific industries.

Institute of Language and Culture provides a variety of language classes are available which focus on speaking skills in a language.

Personal Enrichment provides other programs that include recreational courses, arts and crafts, photography, financial seminars, State Theatre classes, Assessment Test Prep and many more.

Workforce Development Center provides a wide range of training and educational opportunities for individuals getting started in the workplace, furthering their current careers, or working to meet licensure/certification requirements. The Center is made up of three Institutes that cover a wide range of industries.

Health Professions Institute provides entry-level training opportunities for individuals beginning their career in healthcare. The Health Professions Institute also provides continuing education opportunities for current healthcare professionals needing this education as part of their recertification, relicensure, and/or professional development.

High Technology Institute provides technology training through practical hands-on instruction for both new and experienced users. Courses range from computer fundamentals to web authoring, from software programming to AutoCAD training. The Technical Certification Programs include: Cisco, Oracle, Linux, CompTIA, Sun, Project Management, Microsoft, and more.

Business & Industry Institute provides training for those starting or transitioning to a new career, meeting professional continuing education requirements, or simply expanding upon their existing skills in a variety of industry specific program areas. Program areas include job entry training, business development, professional development, professional continuing education, and apprenticeship training.

Source: Office of Continuing Education

Continuing Education Academic Year 2005 Programs

Alternative Teacher Certification

- Substitute Teacher
- ParaEducator Institute
- Professional Development for Teachers

Community Programs

- Arts and Crafts
- Summer Programs
- Assessment Test Preparation
- Building Construction
- Horticulture and Landscaping
- Floral Design
- Religion
- Driving Safety
- Financial Programs
- Music
- Personal Enrichment
- Photography
- Sports and Recreation
- Trips and Tours
- Writing Institute
- Alcohol Servers Certification
- Home and Gardens

Customized Training

- Contract Classes for Business, Industry, Organizations and Governmental Agencies
- ACT Training Center

Workforce Development Center

Health Professions Institute

- Allied Health Care Courses
- Basic Certificates (Entry-level)
- Advanced Certificates
- Special Certificates
- Independent Study Courses
- Distance Learning Courses
- Professional Continuing Health Care Education

Business & Industry Institute

- Business Development
- Career Advancement Courses
- Management and Supervision Courses
- Professional Continuing Education
- Truck Driving
- Apprenticeship
- Earth Moving Equipment Operation

High Technology Institute

- AutoCAD Training
- Computer Applications
- Technical Certifications
- Programming
- Video Game Development
- Project Management
- Webmaster
- Classroom and Online Courses

Community Partnerships

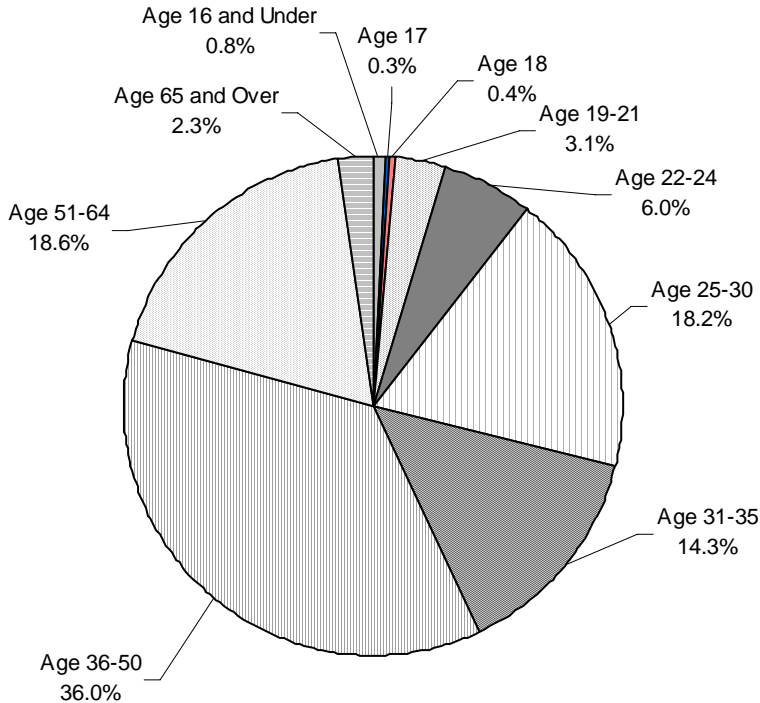
Continuing Education welcomes partnerships that provide service and training to the community. Examples of community partnerships currently in place are:

ACT Training Center
American Heart Association
Armstrong Community Music School of the Austin Lyric Opera
Association of Contingency Planners
Austin APICS
Austin Information Systems Security Association
Austin Project Management Institute
Austin Travis County Mental Health and Mental Retardation
Austin District Dental Hygienist's Society

Austin Chapter of the Texas Association of Addiction Professionals
Bass Master University
Entertech
International Schools Professional Driver Training
Localization Advisory Board
Seton Healthcare Network
State Theatre School of Acting
St. David's Healthcare Partnership

Source: Office of Continuing Education

**Continuing Education
Annual Headcount by Age
Academic Year 2005**

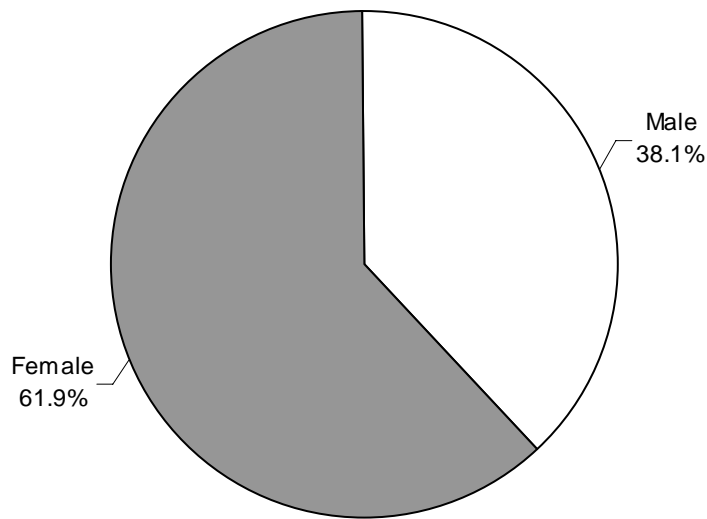


Age	2004-05	Percent of Total
16 and Under	85	0.8%
17	27	0.3%
18	38	0.4%
19-21	324	3.1%
22-24	617	6.0%
25-30	1,870	18.2%
31-35	1,473	14.3%
36-50	3,707	36.0%
51-64	1,920	18.6%
65 and Over	234	2.3%
TOTAL	10,295	

NOTE: Percents may not add to 100 due to rounding.

Source: Office of Continuing Education

**Continuing Education
Annual Headcount by Gender
Academic Year 2005**

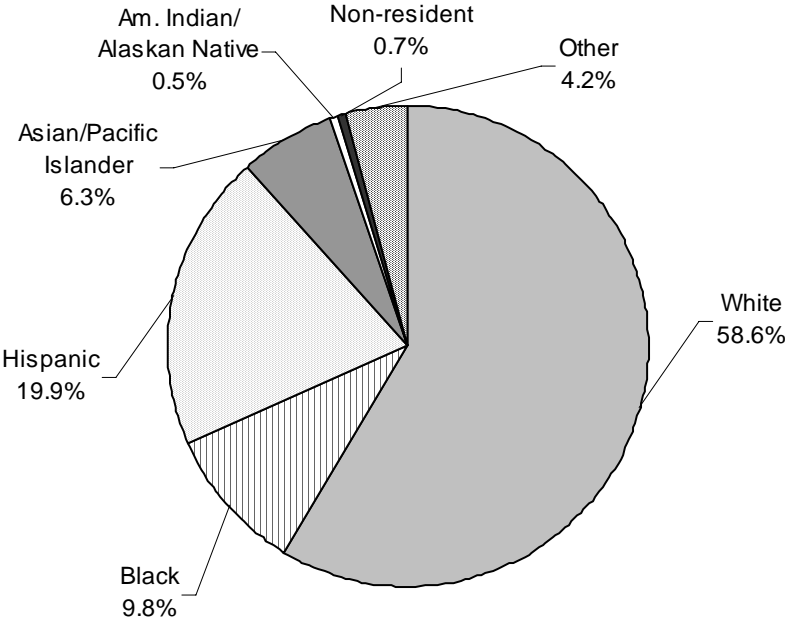


Gender	2004-05	Percent of Total
Male	3,922	38.1%
Female	6,373	61.9%
TOTAL	10,295	

NOTE: Percents may not add to 100 due to rounding.

Source: Office of Continuing Education

**Continuing Education
Annual Headcount by Ethnicity
Academic Year 2005**



Ethnicity	2004-05	Percent of Total
White	6,031	58.6%
Black	1,010	9.8%
Hispanic	2,050	19.9%
Asian/Pacific Islander	649	6.3%
Am. Indian/Alaskan Native	56	0.5%
Non-resident	71	0.7%
Other	428	4.2%
TOTAL	10,295	

NOTE: Percents may not add to 100 due to rounding.

Source: Office of Continuing Education

**Continuing Education
Annual Headcount by Zip Code
Academic Year 2005**

<u>Region</u>	<u>Zip Code</u>	<u>2004-05</u>	<u>Region</u>	<u>Zip Code</u>	<u>2004-05</u>
Austin, Central			Austin/Travis County, South		
Austin	78701	69	Manchaca	78652	23
Austin	78703	138	Austin	78704	466
Austin	78705	106	Austin	78745	484
Austin	78712	3	Austin	78748	289
Austin	78751	127	Total		1,262
Austin	78752	116	% of Grand Total		12.3%
Austin	78756	68			
Austin	78757	234	Austin/Travis County, Southeast		
Total		861	Del Valle	78617	72
% of Grand Total		8.4%	Austin	78719	6
			Austin	78741	294
Austin, East			Austin	78742	9
Austin	78702	150	Austin	78744	221
Austin	78721	60	Austin	78747	1
Austin	78722	53	Total		603
Austin	78723	215	% of Grand Total		5.9%
Total		478	Austin/Travis County, Southwest		
% of Grand Total		4.6%	Austin	78735	77
			Austin	78736	61
Austin, North			Austin	78739	60
Austin	78727	275	Austin	78746	117
Austin	78728	187	Austin	78749	234
Austin	78758	459	Total		549
Total		921	% of Grand Total		5.3%
% of Grand Total		8.9%			
			Austin, Northwest		
Austin, Northwest			Austin	78726	77
Austin	78726	77	Austin	78730	34
Austin	78730	34	Austin	78731	245
Austin	78731	245	Austin	78750	142
Austin	78750	142	Austin	78759	446
Austin	78759	446	Total		944
Total		944	% of Grand Total		9.2%
% of Grand Total		9.2%			

NOTE: Headcount is based on zip code data as reported and entered in the ACC database. Zip code regions are based on definitions developed by ACC administration.

Source: Office of Continuing Education

**Continuing Education
Annual Headcount by Zip Code (continued)
Academic Year 2005**

Region	Zip Code	2004-05	Region	Zip Code	2004-05
Bastrop County*			Caldwell County*		
Bastrop	78602	95	Dale	78616	20
Cedar Creek	78612	51	Lockhart	78644	40
Elgin	78621	68	Luling	78648	4
McDade	78650	1	Martindale	78655	2
Paige	78659	11	Maxwell	78656	5
Red Rock	78662	9			
Rosanky	78953	2	Total		71
Smithville	78957	35	% of Grand Total		0.7%
Total		272	Cedar Park/Leander		
% of Grand Total		2.6%	Cedar Park	78613	429
			Leander	78641	252
			Liberty Hill	78642	24
			Total		705
			% of Grand Total		6.8%
Blanco County*			Georgetown/North Williamson County		
Blanco	78606	9	Florence	76527	12
Johnson City	78636	3	Granger	76530	11
Total		12	Jarrell	76537	6
% of Grand Total		0.1%	Georgetown	78626	83
			Georgetown	78628	116
			Total		228
			% of Grand Total		2.2%
Burnet County*			Gillespie County*		
Bertram	78605	17	Fredericksburg	78624	12
Burnet	78611	11	Total		12
Marble Falls	78654	22	% of Grand Total		0.1%
Total		50			
% of Grand Total		0.5%			

* These numbers do not represent total headcount for the county due to zip codes that span more than one county.

NOTE: Headcount is based on zip code data as reported and entered in the ACC database. Zip code regions are based on definitions developed by ACC administration.

Source: Office of Continuing Education

**Continuing Education
Annual Headcount by Zip Code (continued)
Academic Year 2005**

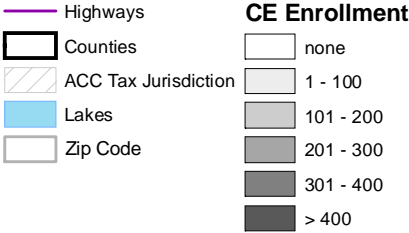
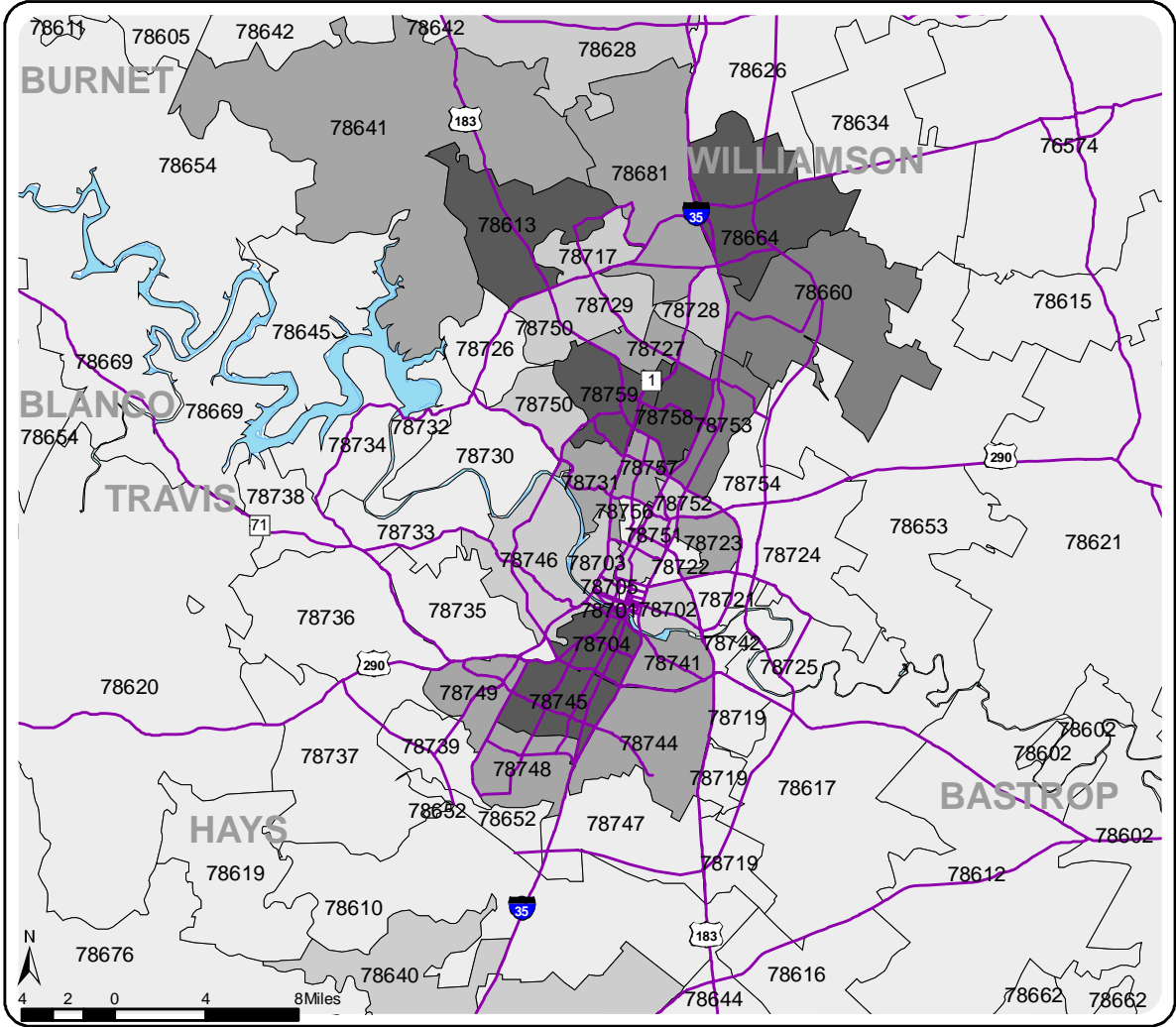
Region	Zip Code	2004-05	Region	Zip Code	2004-05
Hays County*			Taylor/Hutto/East Williamson County		
Buda	78610	51	Taylor	76574	57
Driftwood	78619	7	Thrall	76578	4
Dripping Springs	78620	43	Coupland	78615	5
Kyle	78640	106	Hutto	78634	55
San Marcos	78666	98	Total		121
Wimberley	78676	29	% of Grand Total		1.2%
Austin	78737	37			
Total		371	West Travis County		
% of Grand Total		3.6%	Leander	78645	53
			Spicewood	78669	13
Manor/East Travis County			Austin	78732	30
Manor	78653	94	Austin	78733	25
Austin	78724	89	Austin	78734	60
Austin	78725	25	Austin	78738	27
Total		208	Total		208
% of Grand Total		2.0%	% of Grand Total		2.0%
			Other/Unknown		
Pflugerville/Northeast Travis County					752
Pflugerville	78660	305	% of Grand Total		7.3%
Austin	78753	391			
Austin	78754	79	Grand Total		
Total		775			10,295
% of Grand Total		7.5%			
			Round Rock		
Round Rock	78664	411	Round Rock	78664	411
Round Rock	78681	202	Round Rock	78681	202
Austin	78717	102	Austin	78717	102
Austin	78729	177	Austin	78729	177
Total		892	Total		892
% of Grand Total		8.7%	% of Grand Total		8.7%

* These numbers do not represent total headcount for the county due to zip codes that span more than one county.

NOTE: Headcount is based on zip code data as reported and entered in the ACC database. Zip code regions are based on definitions developed by ACC administration.

Source: Office of Continuing Education

Continuing Education Annual Headcount by Zip Code Map Academic Year 2005



NOTE: Headcount is based on zip code data as reported and entered in the ACC database.

Source: Office of Continuing Education

**Continuing Education
Course Enrollment by Location
Academic Year 2005**

Location	2004-05	Percent
Associate Builders & Contractors	42	0.2%
Austin Fire Department	201	1.2%
Art Glass Fusing Center	59	0.3%
Austin-Heartland Health Care	49	0.3%
Austin Police Department	252	1.5%
Austin Recreation Center	49	0.3%
Blood & Tissue Ctr Central TX	3	0.0%
Carpenter's Hall (JATC)*	46	0.3%
Clifton Career Dev School	14	0.1%
Cypress Creek Campus	240	1.4%
DeWitty Employmt Job Trng Ctr	3	0.0%
Eastview Campus	1,029	6.1%
Govalle Care Center	66	0.4%
Georgetown High School	39	0.2%
Golden Vista Equestrian Center	19	0.1%
Georgetown Wesleyan Nursing	31	0.2%
Highland Business Center	11,785	69.6%
Intertech Flooring	32	0.2%
Iron Workers (JATC)*	96	0.6%
Image Stained Glass Studio	10	0.1%
Just Results, LLC	8	0.0%
Lanier High School	50	0.3%
Mecca Gym and Spa	14	0.1%
Manor High School	62	0.4%
Northridge Campus	482	2.8%
Open Campus	1	0.0%
Pinnacle Campus	165	1.0%
Rock About	4	0.0%
Rio Grande Campus	186	1.1%
Reagan High School	43	0.3%
Riverside Campus	750	4.4%
St. Edward's University	16	0.1%
Stonebridge Health Center, Inc	68	0.4%
ACC Skills Center	305	1.8%
Care Inn of San Marcos	13	0.1%
San Marcos Center	2	0.0%
Sheet Metal Workers (JATC)*	66	0.4%
State Theater School of Acting	247	1.5%
ACC Service Center	16	0.1%
Travis High School	5	0.0%
Town Lake Animal Shelter	21	0.1%
Texas Rowing Center	9	0.1%
Texas Workers Compensation	21	0.1%
Williamson County Workforce	270	1.6%
YMCA East Communities	8	0.0%
YMCA Northpark	36	0.2%
TOTAL	16,933	

* JATC is an abbreviation for Joint Apprenticeship and Training Committees.

NOTE: Students who enroll in more than one course are counted once for each course. Percents may not add to 100 due to rounding.

Source: Office of Continuing Education

**Continuing Education
Course Enrollment by Program Area
Academic Year 2005**

Program Area	2004-05	Percent of Total
Apprenticeship	282	1.7%
Business Development	526	3.1%
Career Advancement	2,892	17.1%
Community Programs	1,746	10.3%
Computer Applications	1,912	11.3%
Customized Training	2,901	17.1%
Health Professions Institute	4,516	26.7%
Independent Study	27	0.2%
Job Entry Preparation	695	4.1%
Management and Supervision	26	0.2%
Teacher Certification	401	2.4%
Technical Certification	584	3.4%
Truck Driving	425	2.5%
TOTAL	16,933	

NOTE: Students who enroll in more than one course are counted once for each course. Percents may not add to 100 due to rounding.

Source: Office of Continuing Education