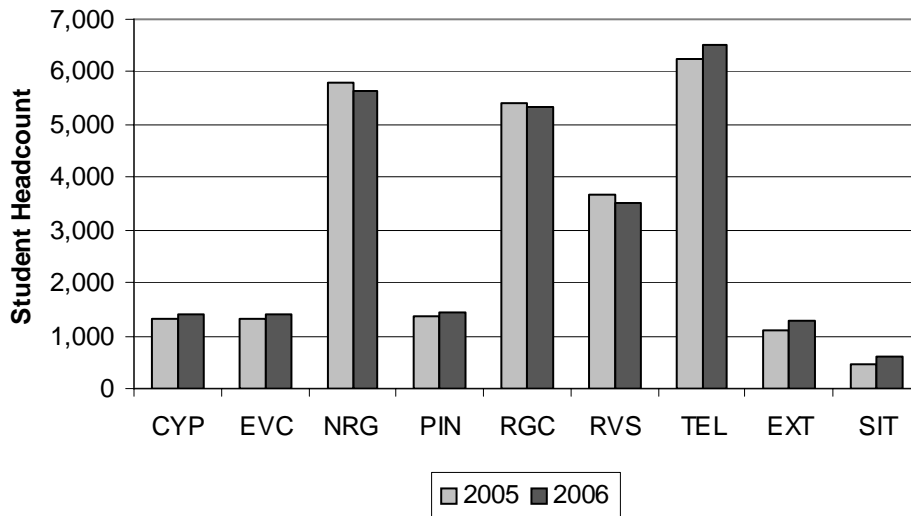


**Student Headcount by Location
Summer 2005 - 2006**

Location	Summer 2005	Summer 2006
Cypress Creek	1,335	1,413
Eastview	1,332	1,414
Northridge	5,785	5,654
Pinnacle	1,350	1,456
Rio Grande	5,413	5,320
Riverside	3,653	3,505
Telecommunicated Instruction	6,240	6,502
Extension Centers	1,104	1,269
Site-Based Instruction	463	610



NOTE: Students who attend multiple locations are counted once at each location.

Source: 4th Class Day Data (Second 5½ week session)

Student Headcount Cypress Creek Campus Summer 2005 - 2006

	Summer 2005	Summer 2006	05-06 % chg
Student Headcount	1,335	1,413	5.84%
Credit Hours	5,227	5,390	3.12%
Average Credit Hours	3.92	3.81	-2.57%
Contact Hours	95,712	99,344	3.79%
Average Contact Hours	71.69	70.31	-1.93%
Residency			
In-District	930 69.66%	1,050 74.31%	12.90%
Out-of-District	382 28.61%	340 24.06%	-10.99%
Out-of-State	18 1.35%	19 1.34%	5.56%
Foreign	5 0.37%	4 0.28%	-20.00%
Gender			
Male	491 36.78%	542 38.36%	10.39%
Female	844 63.22%	871 61.64%	3.20%
Status			
Part-time	620 46.44%	659 46.64%	6.29%
Full-time	715 53.56%	754 53.36%	5.45%
Ethnicity			
White	927 69.44%	937 66.31%	1.08%
Hispanic	193 14.46%	234 16.56%	21.24%
Black	84 6.29%	85 6.02%	1.19%
Asian/Pacific Islander	80 5.99%	99 7.01%	23.75%
Am. Indian/Alaskan Native	12 0.90%	17 1.20%	41.67%
Non-Resident Alien	11 0.82%	20 1.42%	81.82%
Other/Unknown	28 2.10%	21 1.49%	-25.00%
Age			
16 and Under	108 8.09%	139 9.84%	28.70%
17	100 7.49%	140 9.91%	40.00%
18	95 7.12%	96 6.79%	1.05%
19-21	444 33.26%	434 30.71%	-2.25%
22-24	161 12.06%	170 12.03%	5.59%
25-30	182 13.63%	179 12.67%	-1.65%
31-35	100 7.49%	99 7.01%	-1.00%
36-50	135 10.11%	136 9.62%	0.74%
51-64	10 0.75%	19 1.34%	90.00%
65 and Over	0 0.00%	1 0.07%	.
Average Age	23.90 .	24.30 .	1.67%

NOTES: Students who attend multiple locations are counted once at each location. Percents may not add to 100 due to rounding.

Source: 4th Class Day Data (Second 5½ week session)

**Student Headcount
Eastview Campus
Summer 2005 - 2006**

	Summer 2005	Summer 2006	05-06 % chg
Student Headcount	1,332	1,414	6.16%
Credit Hours	5,620	6,364	13.24%
Average Credit Hours	4.22	4.50	6.67%
Contact Hours	164,864	181,552	10.12%
Average Contact Hours	123.77	128.40	3.74%
Residency			
In-District	1,072 80.48%	1,139 80.55%	6.25%
Out-of-District	239 17.94%	247 17.47%	3.35%
Out-of-State	15 1.13%	20 1.41%	33.33%
Foreign	6 0.45%	8 0.57%	33.33%
Gender			
Male	378 28.38%	379 26.80%	0.26%
Female	954 71.62%	1,035 73.20%	8.49%
Status			
Part-time	475 35.66%	496 35.08%	4.42%
Full-time	857 64.34%	918 64.92%	7.12%
Ethnicity			
White	582 43.69%	584 41.30%	0.34%
Hispanic	388 29.13%	400 28.29%	3.09%
Black	246 18.47%	290 20.51%	17.89%
Asian/Pacific Islander	58 4.35%	67 4.74%	15.52%
Am. Indian/Alaskan Native	11 0.83%	9 0.64%	-18.18%
Non-Resident Alien	26 1.95%	33 2.33%	26.92%
Other/Unknown	21 1.58%	31 2.19%	47.62%
Age			
16 and Under	9 0.68%	20 1.41%	122.22%
17	6 0.45%	8 0.57%	33.33%
18	32 2.40%	47 3.32%	46.88%
19-21	236 17.72%	270 19.09%	14.41%
22-24	257 19.29%	230 16.27%	-10.51%
25-30	322 24.17%	345 24.40%	7.14%
31-35	178 13.36%	196 13.86%	10.11%
36-50	252 18.92%	256 18.10%	1.59%
51-64	38 2.85%	41 2.90%	7.89%
65 and Over	2 0.15%	1 0.07%	-50.00%
Average Age	29.10	28.80	-1.03%

NOTES: Students who attend multiple locations are counted once at each location. Percents may not add to 100 due to rounding.

Source: 4th Class Day Data (Second 5½ week session)

**Student Headcount
Northridge Campus
Summer 2005 - 2006**

	Summer 2005	Summer 2006	05-06 % chg
Student Headcount	5,785	5,654	-2.26%
Credit Hours	26,072	25,163	-3.49%
Average Credit Hours	4.51	4.45	-1.25%
Contact Hours	500,744	480,952	-3.95%
Average Contact Hours	86.56	85.06	-1.73%
Residency			
In-District	4,118 71.18%	3,954 69.93%	-3.98%
Out-of-District	1,520 26.27%	1,563 27.64%	2.83%
Out-of-State	88 1.52%	100 1.77%	13.64%
Foreign	59 1.02%	37 0.65%	-37.29%
Gender			
Male	2,570 44.43%	2,556 45.21%	-0.54%
Female	3,215 55.57%	3,098 54.79%	-3.64%
Status			
Part-time	2,571 44.44%	2,486 43.97%	-3.31%
Full-time	3,214 55.56%	3,168 56.03%	-1.43%
Ethnicity			
White	3,230 55.83%	3,128 55.32%	-3.16%
Hispanic	1,108 19.15%	1,095 19.37%	-1.17%
Black	538 9.30%	527 9.32%	-2.04%
Asian/Pacific Islander	601 10.39%	636 11.25%	5.82%
Am. Indian/Alaskan Native	40 0.69%	39 0.69%	-2.50%
Non-Resident Alien	167 2.89%	147 2.60%	-11.98%
Other/Unknown	101 1.75%	82 1.45%	-18.81%
Age			
16 and Under	270 4.67%	281 4.97%	4.07%
17	331 5.72%	332 5.87%	0.30%
18	304 5.25%	323 5.71%	6.25%
19-21	1,885 32.58%	1,811 32.03%	-3.93%
22-24	951 16.44%	929 16.43%	-2.31%
25-30	1,021 17.65%	964 17.05%	-5.58%
31-35	404 6.98%	419 7.41%	3.71%
36-50	509 8.80%	496 8.77%	-2.55%
51-64	99 1.71%	89 1.57%	-10.10%
65 and Over	11 0.19%	10 0.18%	-9.09%
Average Age	24.70	24.60	-0.40%

NOTES: Students who attend multiple locations are counted once at each location. Percents may not add to 100 due to rounding.

Source: 4th Class Day Data (Second 5½ week session)

**Student Headcount
Pinnacle Campus
Summer 2005 - 2006**

	Summer 2005	Summer 2006	05-06 % chg
Student Headcount	1,350	1,456	7.85%
Credit Hours	5,173	5,838	12.86%
Average Credit Hours	3.83	4.01	4.64%
Contact Hours	96,736	109,760	13.46%
Average Contact Hours	71.66	75.38	5.20%
Residency			
In-District	1,011 74.89%	1,095 75.21%	8.31%
Out-of-District	319 23.63%	330 22.66%	3.45%
Out-of-State	15 1.11%	26 1.79%	73.33%
Foreign	5 0.37%	5 0.34%	0.00%
Gender			
Male	558 41.33%	618 42.45%	10.75%
Female	792 58.67%	838 57.55%	5.81%
Status			
Part-time	654 48.44%	688 47.25%	5.20%
Full-time	696 51.56%	768 52.75%	10.34%
Ethnicity			
White	906 67.11%	949 65.18%	4.75%
Hispanic	290 21.48%	314 21.57%	8.28%
Black	38 2.81%	61 4.19%	60.53%
Asian/Pacific Islander	63 4.67%	75 5.15%	19.05%
Am. Indian/Alaskan Native	7 0.52%	16 1.10%	128.57%
Non-Resident Alien	16 1.19%	22 1.51%	37.50%
Other/Unknown	30 2.22%	19 1.30%	-36.67%
Age			
16 and Under	97 7.19%	143 9.82%	47.42%
17	99 7.33%	110 7.55%	11.11%
18	93 6.89%	100 6.87%	7.53%
19-21	510 37.78%	529 36.33%	3.73%
22-24	211 15.63%	228 15.66%	8.06%
25-30	165 12.22%	173 11.88%	4.85%
31-35	57 4.22%	86 5.91%	50.88%
36-50	98 7.26%	74 5.08%	-24.49%
51-64	19 1.41%	13 0.89%	-31.58%
65 and Over	1 0.07%	0 0.00%	.
Average Age	23.20	22.60	-2.59%

NOTES: Students who attend multiple locations are counted once at each location. Percents may not add to 100 due to rounding.

Source: 4th Class Day Data (Second 5½ week session)

Student Headcount Rio Grande Campus Summer 2005 - 2006

	Summer 2005	Summer 2006	05-06 % chg
Student Headcount	5,413	5,320	-1.72%
Credit Hours	24,704	24,184	-2.10%
Average Credit Hours	4.56	4.55	-0.39%
Contact Hours	455,384	447,736	-1.68%
Average Contact Hours	84.13	84.16	0.04%
Residency			
In-District	4,437 81.97%	4,303 80.88%	-3.02%
Out-of-District	751 13.87%	782 14.70%	4.13%
Out-of-State	124 2.29%	136 2.56%	9.68%
Foreign	101 1.87%	99 1.86%	-1.98%
Gender			
Male	2,337 43.17%	2,287 42.99%	-2.14%
Female	3,076 56.83%	3,033 57.01%	-1.40%
Status			
Part-time	2,369 43.77%	2,394 45.00%	1.06%
Full-time	3,044 56.23%	2,926 55.00%	-3.88%
Ethnicity			
White	3,344 61.78%	3,264 61.35%	-2.39%
Hispanic	1,036 19.14%	1,029 19.34%	-0.68%
Black	302 5.58%	331 6.22%	9.60%
Asian/Pacific Islander	434 8.02%	419 7.88%	-3.46%
Am. Indian/Alaskan Native	38 0.70%	38 0.71%	0.00%
Non-Resident Alien	166 3.07%	159 2.99%	-4.22%
Other/Unknown	93 1.72%	80 1.50%	-13.98%
Age			
16 and Under	150 2.77%	188 3.53%	25.33%
17	168 3.10%	180 3.38%	7.14%
18	240 4.43%	229 4.30%	-4.58%
19-21	2,260 41.75%	2,174 40.86%	-3.81%
22-24	1,071 19.79%	1,017 19.12%	-5.04%
25-30	828 15.30%	851 16.00%	2.78%
31-35	313 5.78%	275 5.17%	-12.14%
36-50	313 5.78%	335 6.30%	7.03%
51-64	66 1.22%	67 1.26%	1.52%
65 and Over	4 0.07%	4 0.08%	0.00%
Average Age	23.80	23.80	0.00%

NOTES: Students who attend multiple locations are counted once at each location. Percents may not add to 100 due to rounding.

Source: 4th Class Day Data (Second 5½ week session)

**Student Headcount
Riverside Campus
Summer 2005 - 2006**

	Summer 2005	Summer 2006	05-06 % chg
Student Headcount	3,653	3,505	-4.05%
Credit Hours	16,051	15,607	-2.77%
Average Credit Hours	4.39	4.45	1.34%
Contact Hours	306,632	299,968	-2.17%
Average Contact Hours	83.94	85.58	1.96%
Residency			
In-District	2,986 81.74%	2,870 81.88%	-3.88%
Out-of-District	576 15.77%	538 15.35%	-6.60%
Out-of-State	39 1.07%	59 1.68%	51.28%
Foreign	52 1.42%	38 1.08%	-26.92%
Gender			
Male	1,603 43.88%	1,591 45.39%	-0.75%
Female	2,050 56.12%	1,914 54.61%	-6.63%
Status			
Part-time	1,542 42.21%	1,469 41.91%	-4.73%
Full-time	2,111 57.79%	2,036 58.09%	-3.55%
Ethnicity			
White	1,806 49.44%	1,682 47.99%	-6.87%
Hispanic	1,075 29.43%	1,077 30.73%	0.19%
Black	351 9.61%	372 10.61%	5.98%
Asian/Pacific Islander	243 6.65%	208 5.93%	-14.40%
Am. Indian/Alaskan Native	24 0.66%	31 0.88%	29.17%
Non-Resident Alien	90 2.46%	90 2.57%	0.00%
Other/Unknown	64 1.75%	45 1.28%	-29.69%
Age			
16 and Under	86 2.35%	102 2.91%	18.60%
17	123 3.37%	108 3.08%	-12.20%
18	171 4.68%	152 4.34%	-11.11%
19-21	1,307 35.78%	1,261 35.98%	-3.52%
22-24	709 19.41%	686 19.57%	-3.24%
25-30	637 17.44%	572 16.32%	-10.20%
31-35	239 6.54%	240 6.85%	0.42%
36-50	317 8.68%	303 8.64%	-4.42%
51-64	58 1.59%	74 2.11%	27.59%
65 and Over	6 0.16%	7 0.20%	16.67%
Average Age	24.80	25.00	0.81%

NOTES: Students who attend multiple locations are counted once at each location. Percents may not add to 100 due to rounding.

Source: 4th Class Day Data (Second 5½ week session)

Student Headcount Telecommunicated Instruction¹ Summer 2005 - 2006

	Summer 2005	Summer 2006	05-06 % chg
Student Headcount	6,240	6,502	4.20%
Credit Hours	27,087	28,080	3.67%
Average Credit Hours	4.34	4.32	-0.51%
Contact Hours	459,296	469,488	2.22%
Average Contact Hours	73.61	72.21	-1.90%
Residency			
In-District	4,737 75.91%	4,856 74.68%	2.51%
Out-of-District	1,303 20.88%	1,465 22.53%	12.43%
Out-of-State	120 1.92%	124 1.91%	3.33%
Foreign	80 1.28%	57 0.88%	-28.75%
Gender			
Male	2,154 34.52%	2,277 35.02%	5.71%
Female	4,086 65.48%	4,225 64.98%	3.40%
Status			
Part-time	2,408 38.59%	2,533 38.96%	5.19%
Full-time	3,832 61.41%	3,969 61.04%	3.58%
Ethnicity			
White	4,080 65.38%	4,208 64.72%	3.14%
Hispanic	1,016 16.28%	1,083 16.66%	6.59%
Black	417 6.68%	438 6.74%	5.04%
Asian/Pacific Islander	483 7.74%	525 8.07%	8.70%
Am. Indian/Alaskan Native	36 0.58%	44 0.68%	22.22%
Non-Resident Alien	116 1.86%	134 2.06%	15.52%
Other/Unknown	92 1.47%	70 1.08%	-23.91%
Age			
16 and Under	134 2.15%	227 3.49%	69.40%
17	152 2.44%	217 3.34%	42.76%
18	211 3.38%	218 3.35%	3.32%
19-21	2,300 36.86%	2,377 36.56%	3.35%
22-24	1,123 18.00%	1,147 17.64%	2.14%
25-30	1,103 17.68%	1,099 16.90%	-0.36%
31-35	517 8.29%	510 7.84%	-1.35%
36-50	609 9.76%	613 9.43%	0.66%
51-64	88 1.41%	91 1.40%	3.41%
65 and Over	3 0.05%	3 0.05%	0.00%
Average Age	25.20	24.90	-1.19%

¹ Prior to Summer 2006, Telecommunicated instruction included courses offered in the following formats: Instructional Television, Personal Computer with Modem, Print-Based using a textbook, Directed Learning, and Interactive Video Class.

NOTES: Students who attend multiple locations are counted once at each location. Percents may not add to 100 due to rounding.

Source: 4th Class Day Data (Second 5½ week session)

**Student Headcount
Site-Based¹ Summary
Summer 2005 - 2006**

	Summer 2005	Summer 2006	05-06 % chg
Student Headcount	463	610	31.75%
Credit Hours	1,787	2,091	17.01%
Average Credit Hours	3.86	3.43	-11.19%
Contact Hours	34,048	41,312	21.33%
Average Contact Hours	73.54	67.72	-7.91%
Residency			
In-District	362 78.19%	368 60.33%	1.66%
Out-of-District	98 21.17%	238 39.02%	142.86%
Out-of-State	1 0.22%	4 0.66%	300.00%
Foreign	2 0.43%	0 0.00%	-100.00%
Gender			
Male	208 44.92%	226 37.05%	8.65%
Female	255 55.08%	384 62.95%	50.59%
Status			
Part-time	214 46.22%	321 52.62%	50.00%
Full-time	249 53.78%	289 47.38%	16.06%
Ethnicity			
White	270 58.32%	392 64.26%	45.19%
Hispanic	101 21.81%	115 18.85%	13.86%
Black	47 10.15%	37 6.07%	-21.28%
Asian/Pacific Islander	32 6.91%	58 9.51%	81.25%
Am. Indian/Alaskan Native	7 1.51%	1 0.16%	-85.71%
Non-Resident Alien	3 0.65%	5 0.82%	66.67%
Other/Unknown	3 0.65%	2 0.33%	-33.33%
Age			
16 and Under	136 29.37%	237 38.85%	74.26%
17	115 24.84%	188 30.82%	63.48%
18	8 1.73%	7 1.15%	-12.50%
19-21	32 6.91%	36 5.90%	12.50%
22-24	29 6.26%	35 5.74%	20.69%
25-30	44 9.50%	41 6.72%	-6.82%
31-35	27 5.83%	25 4.10%	-7.41%
36-50	55 11.88%	33 5.41%	-40.00%
51-64	14 3.02%	8 1.31%	-42.86%
65 and Over	3 0.65%	0 0.00%	-100.00%
Average Age	23.60	20.20	-14.41%

¹ Site-based instruction includes various credit and non-credit classes and training offered or provided to businesses, government entities, high schools, correctional institutions, and community groups.

Source: 4th Class Day Data (Second 5½ week session)

Student Headcount Centers¹ Summary Summer 2005 - 2006

	Summer 2005	Summer 2006	05-06 % chg
Student Headcount	1,104	1,269	14.95%
Credit Hours	4,410	5,061	14.76%
Average Credit Hours	3.99	3.99	-0.16%
Contact Hours	73,936	83,472	12.90%
Average Contact Hours	66.97	65.78	-1.78%
Residency			
In-District	226 20.47%	296 23.33%	30.97%
Out-of-District	866 78.44%	963 75.89%	11.20%
Out-of-State	8 0.72%	8 0.63%	0.00%
Foreign	4 0.36%	2 0.16%	-50.00%
Gender			
Male	397 35.96%	461 36.33%	16.12%
Female	707 64.04%	808 63.67%	14.29%
Status			
Part-time	517 46.83%	597 47.04%	15.47%
Full-time	587 53.17%	672 52.96%	14.48%
Ethnicity			
White	741 67.12%	843 66.43%	13.77%
Hispanic	25 2.26%	67 5.28%	168.00%
Black	250 22.64%	268 21.12%	7.20%
Asian/Pacific Islander	33 2.99%	37 2.92%	12.12%
Am. Indian/Alaskan Native	7 0.63%	12 0.95%	71.43%
Non-Resident Alien	5 0.45%	7 0.55%	40.00%
Other/Unknown	43 3.89%	35 2.76%	-18.60%
Age			
16 and Under	200 18.12%	214 16.86%	7.00%
17	206 18.66%	223 17.57%	8.25%
18	97 8.79%	111 8.75%	14.43%
19-21	360 32.61%	381 30.02%	5.83%
22-24	67 6.07%	92 7.25%	37.31%
25-30	81 7.34%	87 6.86%	7.41%
31-35	31 2.81%	63 4.96%	103.23%
36-50	53 4.80%	88 6.93%	66.04%
51-64	8 0.72%	9 0.71%	12.50%
65 and Over	1 0.09%	1 0.08%	0.00%
Average Age	20.80	21.60	3.85%

¹ Centers include non-campus locations that are staffed, have regular posted hours, and offer credit courses every semester.

NOTES: Students are counted once for each location they attend. Percents may not add to 100 due to rounding.

Source: 4th Class Day Data (Second 5½ week session)

**Student Headcount
Centers¹ by Location
Summer 2006**

	Bastrop	Fredericksburg	Georgetown	Hays
Student Headcount	85	329	51	85
Credit Hours	354	1,473	225	276
Average Credit Hours	4.16	4.48	4.41	3.25
Contact Hours	5,664	24,288	3,600	4,592
Average Contact Hours	66.64	73.82	70.59	54.02
Residency				
In-District	9 10.59%	8 2.43%	6 11.76%	21 24.71%
Out-of-District	76 89.41%	319 96.96%	44 86.27%	64 75.29%
Out-of-State	0 0.00%	1 0.30%	1 1.96%	0 0.00%
Foreign	0 0.00%	1 0.30%	0 0.00%	0 0.00%
Gender				
Male	25 29.41%	117 35.56%	13 25.49%	26 30.59%
Female	60 70.59%	212 64.44%	38 74.51%	59 69.41%
Status				
Part-time	38 44.71%	163 49.54%	20 39.22%	48 56.47%
Full-time	47 55.29%	166 50.46%	31 60.78%	37 43.53%
Ethnicity				
White	58 68.24%	259 78.72%	41 80.39%	46 54.12%
Hispanic	13 15.29%	37 11.25%	5 9.80%	32 37.65%
Black	7 8.24%	3 0.91%	3 5.88%	6 7.06%
Asian/Pacific Islander	5 5.88%	2 0.61%	1 1.96%	0 0.00%
Am. Indian/Alaskan Native	1 1.18%	1 0.30%	1 1.96%	0 0.00%
Non-Resident Alien	1 1.18%	1 0.30%	0 0.00%	0 0.00%
Other/Unknown	0 0.00%	26 7.90%	0 0.00%	1 1.18%
Age				
16 and Under	33 38.82%	84 25.53%	16 31.37%	11 12.94%
17	27 31.76%	53 16.11%	24 47.06%	11 12.94%
18	4 4.71%	36 10.94%	1 1.96%	8 9.41%
19-21	15 17.65%	97 29.48%	3 5.88%	31 36.47%
22-24	2 2.35%	14 4.26%	3 5.88%	7 8.24%
25-30	1 1.18%	16 4.86%	2 3.92%	8 9.41%
31-35	1 1.18%	10 3.04%	1 1.96%	3 3.53%
36-50	2 2.35%	19 5.78%	0 0.00%	5 5.88%
51-64	0 0.00%	0 0.00%	1 1.96%	1 1.18%
65 and Over	0 0.00%	0 0.00%	0 0.00%	0 0.00%
Average Age	17.88	20.25	18.57	21.88

¹ Centers include non-campus locations that are staffed, have regular posted hours, and offer credit courses every semester.

NOTES: Students are counted once for each location they attend. Percents may not add to 100 due to rounding.

Source: 4th Class Day Data (Second 5½ week session)

**Student Headcount
Centers¹ by Location (continued)
Summer 2006**

	Round Rock Higher Education Center	San Marcos High School	San Marcos Lamar Center
Student Headcount	496	155	66
Credit Hours	1,821	564	264
Average Credit Hours	3.67	3.64	4.00
Contact Hours	30,320	9,440	4,224
Average Contact Hours	61.13	60.90	64.00
Residency			
In-District	196 39.52%	20 12.90%	12 18.18%
Out-of-District	296 59.68%	132 85.16%	53 80.30%
Out-of-State	4 0.81%	2 1.29%	1 1.52%
Foreign	0 0.00%	1 0.65%	0 0.00%
Gender			
Male	190 38.31%	63 40.65%	25 37.88%
Female	306 61.69%	92 59.35%	41 62.12%
Status			
Part-time	203 40.93%	83 53.55%	26 39.39%
Full-time	293 59.07%	72 46.45%	40 60.61%
Ethnicity			
White	308 62.10%	93 60.00%	35 53.03%
Hispanic	99 19.96%	56 36.13%	29 43.94%
Black	46 9.27%	2 1.29%	0 0.00%
Asian/Pacific Islander	26 5.24%	0 0.00%	1 1.52%
Am. Indian/Alaskan Native	6 1.21%	3 1.94%	0 0.00%
Non-Resident Alien	4 0.81%	1 0.65%	0 0.00%
Other/Unknown	7 1.41%	0 0.00%	1 1.52%
Age			
16 and Under	38 7.66%	23 14.84%	7 10.61%
17	63 12.70%	21 13.55%	3 4.55%
18	43 8.67%	13 8.39%	8 12.12%
19-21	161 32.46%	55 35.48%	30 45.45%
22-24	44 8.87%	15 9.68%	11 16.67%
25-30	50 10.08%	10 6.45%	1 1.52%
31-35	36 7.26%	11 7.10%	2 3.03%
36-50	55 11.09%	5 3.23%	3 4.55%
51-64	5 1.01%	2 1.29%	1 1.52%
65 and Over	1 0.20%	0 0.00%	0 0.00%
Average Age	23.78	21.58	21.91

¹ Centers include non-campus locations that are staffed, have regular posted hours, and offer credit courses every semester.

NOTES: Students are counted once for each location they attend. Percents may not add to 100 due to rounding.

Source: 4th Class Day Data (Second 5½ week session)