

Continuing Education

This section can be used for finding:

- *information on Continuing Education programs.*
- *which organizations offer service and training through community partnerships.*
- *demographic information on Continuing Education students.*
- *enrollment information on Continuing Education classes.*

Contents

Useful Terms	248
Overview	249
Academic Year Programs	250
Community Partnerships	250
Student Characteristics	251
Annual Headcount by Region and Zip Code	252
Annual Headcount by Zip Code Map	257
Annual Headcount by Zip Code	258
Course Enrollment by Location	261
Course Enrollment by Program Area	262

Useful Terms

Headcount - the number of students enrolled in one or more courses. This number may be duplicated or unduplicated.

Enrollment - the number of courses students have registered for.

Continuing Education Overview

Continuing Education programs at Austin Community College are conducted in the following areas:

Center for Teacher Certification provides training for those with a bachelor's degree and subject competency to become teachers in Texas. Candidates enter an internship as a first-year teacher and finish with a teaching certificate. Educator training is also available for professional development and additional certifications, training for instructional aides, online substitute teacher training, and childcare classes. A Department of Education grant provides two cohorts of bilingual teachers with online support for 3 years.

Community Programs provides a variety of programs offered to challenge the creative mind, increase and refine vocational skills, and develop individuals personally. Community Programs provides a wide range of programs that promote lifelong learning. The Home and Garden program was awarded a National Exemplary Program Award.

Interior Design Institute includes Floral Design, Landscape Design, and Horticulture programs are premier training for individuals wanting to enter the specific industries.

Institute of Language and Culture provides a variety of language classes are available which focus on speaking skills in a language.

Personal Enrichment provides other programs that include recreational courses, arts and crafts, photography, financial seminars, State Theatre classes, Event and Wedding Planning, Assessment Test Prep and many more.

Customized Training provides a one-stop source to training solutions for business, industry, and governmental agencies. By collaborating with organizations to analyze learning needs, Customized Training will tailor educational experiences that will develop employee talent and improve performance. Programs are flexible, on target, convenient and a value-added resource, making Customized Training a partner in improved business results.

Workforce Development Center is designed to provide a wide range of training and educational opportunities for individuals getting started in the workplace, furthering their current careers, or working to meet licensure/certification requirements. The Center is made up of three Institutes that cover a wide range of industries.

Health Professions Institute provides entry-level training opportunities for individuals beginning their career in healthcare. The Health Professions Institute also provides continuing education opportunities for current healthcare professionals needing this education as part of their recertification, relicensure, and/or professional development.

High Technology Institute provides technology training through practical hands-on instruction for both new and experienced users. Courses range from computer fundamentals to web authoring, from software programming to AutoCAD training. The Technical Certification Programs include: Cisco, Oracle, Linux, CompTIA, Sun, Project Management, Microsoft, Video Game Development and more.

Business & Industry Institute provides training for those starting or transitioning to a new career, meeting professional continuing education requirements, or simply expanding upon their existing skills in a variety of industry specific program areas. Program areas include job entry training, business development, professional development, professional continuing education, and apprenticeship training.

Source: Office of Continuing Education

Continuing Education Academic Year 2007 Programs

Alternative Teacher Certification

- Substitute Teacher
- ParaEducator Institute
- Professional Development for Teachers

Community Programs

- Acting
- Arts and Crafts
- Assessment Test Preparation
- Building Construction
- Driving Safety
- ESOL
- Event Planning
- Financial Programs
- Floral Design
- Home and Gardens
- Horticulture and Landscaping
- Music
- Personal Enrichment
- Photography
- Sports and Recreation
- Summer Programs
- Trips and Tours
- Wedding Institute
- Writing Institute

Customized Training

- Contract Classes for Business, Industry, Organizations and Governmental Agencies

Workforce Development Center

• Health Professions Institute

- Advanced Skills
- Entry-Level Job Preparation
 - (i.e. Dental Assisting, Medical Assisting)
- Basic Certification/Licensure
 - (i.e. Nurse Aide, Massage Therapy)
- Life Saving (i.e. CPR, ACLS, PALS)
- Independent Study Courses
- Professional Continuing Education (i.e. Nursing, Social Work)
- Special Certificates

• Business & Industry Institute

- Apprenticeship
- Job Preparation (i.e. Truck Driving, Automotive)
- Certification/Licensure (i.e. Real Estate, Home Inspection)
- Management and Supervision Courses
- Professional Continuing Education (i.e. Accounting)
- Renewable Energy
- Workplace Skills (i.e. Translator, Interpreter)

• High Technology Institute

- AutoCAD Training
- Classroom and Online Courses
- Computer Applications (i.e. Microsoft Office)
- Programming
- Project Management
- Technical Certifications (i.e. Microsoft, CISCO)
- Video Game Development
- Webmaster
- Wireless Technology

Community Partnerships

Continuing Education welcomes partnerships that provide service and training to the community. Examples of community partnerships currently in place are:

American Heart Association
Association of Contingency Planners
Austin APICS
Austin Information Systems Security Association
Austin Project Management Institute
Austin Travis County Mental Health
and Mental Retardation

Austin Chapter of the Texas Association of
Addiction Professionals
Entertech
International Schools Professional Driver Training
Localization Advisory Board
Seton Healthcare Network
State Theatre School of Acting

Source: Office of Continuing Education

**Continuing Education
Student Characteristics
Academic Year 2003 - 2007**

	AY 2003	AY 2004	AY 2005	AY 2006	AY 2007	03-07 % chg
Student Headcount	8,637	10,435	10,295	9,882	10,517	21.77%
Gender						
Male	3,400 39.37%	4,137 39.65%	3,922 38.10%	3,856 39.02%	3,983 37.87%	17.15%
Female	5,237 60.63%	6,298 60.35%	6,373 61.90%	5,990 60.62%	6,534 62.13%	24.77%
Ethnicity						
White	5,609 64.94%	6,417 61.49%	6,031 58.58%	5,786 58.55%	6,055 57.57%	7.95%
Hispanic	1,436 16.63%	1,880 18.02%	2,050 19.91%	1,999 20.23%	2,293 21.80%	59.68%
Black	810 9.38%	1,073 10.28%	1,010 9.81%	960 9.71%	963 9.16%	18.89%
Asian/Pacific Islander	461 5.34%	603 5.78%	649 6.30%	654 6.62%	693 6.59%	50.33%
Am. Indian/Alaskan Native	39 0.45%	58 0.56%	56 0.54%	64 0.65%	55 0.52%	41.03%
Non-Resident Alien	51 0.59%	58 0.56%	71 0.69%	66 0.67%	76 0.72%	49.02%
Other/Unknown	231 2.67%	346 3.32%	428 4.16%	353 3.57%	382 3.63%	65.37%
Age						
16 and Under	81 0.94%	120 1.15%	85 0.83%	95 0.96%	77 0.73%	-4.94%
17	27 0.31%	17 0.16%	27 0.26%	30 0.30%	52 0.49%	92.59%
18	36 0.42%	37 0.35%	38 0.37%	49 0.50%	106 1.01%	194.44%
19-21	317 3.67%	359 3.44%	324 3.15%	379 3.84%	476 4.53%	50.16%
22-24	542 6.28%	684 6.55%	617 5.99%	715 7.24%	762 7.25%	40.59%
25-30	1,429 16.55%	1,779 17.05%	1,870 18.16%	1,831 18.53%	2,000 19.02%	39.96%
31-35	1,291 14.95%	1,525 14.61%	1,473 14.31%	1,400 14.17%	1,497 14.23%	15.96%
36-50	3,168 36.68%	3,778 36.21%	3,707 36.01%	3,448 34.89%	3,553 33.78%	12.15%
51-64	1,523 17.63%	1,875 17.97%	1,920 18.65%	1,693 17.13%	1,707 16.23%	12.08%
65 and Over	223 2.58%	261 2.50%	234 2.27%	242 2.45%	233 2.22%	4.48%
Unknown	0 0.00%	0 0.00%	0 0.00%	0 0.00%	54 0.51%	.

NOTE: Percents may not add to 100 due to rounding.

Source: Office of Institutional Effectiveness and Accountability

**Continuing Education
Annual Headcount by Region and Zip Code
Academic Year 2003 - 2007**

Region	Zip Code	2002-03	2003-04	2004-05	2005-06	2006-07	03-07 %chg
Austin, Central							
Austin	78701	72	96	69	102	109	51.39%
Austin	78703	138	180	138	138	152	10.14%
Austin	78705	141	124	106	111	125	-11.35%
Austin	78712	0	1	3	1	0	.
Austin	78751	108	117	127	109	120	11.11%
Austin	78752	120	143	116	106	109	-9.17%
Austin	78756	75	78	68	52	76	1.33%
Austin	78757	214	239	234	218	205	-4.21%
Total		868	978	861	837	896	3.23%
%of Grand Total		10.05%	9.37%	8.36%	8.47%	8.52%	
Austin, East							
Austin	78702	123	144	150	113	107	-13.01%
Austin	78721	61	64	60	58	59	-3.28%
Austin	78722	57	71	53	51	65	14.04%
Austin	78723	184	212	215	155	156	-15.22%
Total		425	491	478	377	387	-8.94%
%of Grand Total		4.92%	4.71%	4.64%	3.82%	3.68%	
Austin, North							
Austin	78727	250	296	275	307	279	11.60%
Austin	78728	91	119	187	127	125	37.36%
Austin	78758	390	497	459	387	398	2.05%
Total		731	912	921	821	802	9.71%
%of Grand Total		8.46%	8.74%	8.95%	8.31%	7.63%	
Austin, Northwest							
Austin	78726	46	77	77	67	61	32.61%
Austin	78730	30	33	34	37	30	0.00%
Austin	78731	213	233	245	227	244	14.55%
Austin	78750	130	184	142	154	161	23.85%
Austin	78759	408	459	446	468	446	9.31%
Total		827	986	944	953	942	13.91%
%of Grand Total		9.58%	9.45%	9.17%	9.64%	8.96%	

NOTE: Headcount is based on zip code data as reported and entered in the ACC database. Zip code regions are based on definitions developed by ACC administration.

Source: Office of Institutional Effectiveness and Accountability

**Continuing Education
Annual Headcount by Region and Zip Code (continued)
Academic Year 2003 - 2007**

Region	Zip Code	2002-03	2003-04	2004-05	2005-06	2006-07	03-07 % chg
Austin/Travis County, South							
Manchaca	78652	29	21	23	14	20	-31.03%
Austin	78704	447	449	466	423	423	-5.37%
Austin	78745	431	508	484	454	504	16.94%
Austin	78748	236	277	289	281	294	24.58%
Total		1,143	1,255	1,262	1,172	1,241	8.57%
%of Grand Total		13.23%	12.03%	12.26%	11.86%	11.80%	
Austin/Travis County, Southeast							
Del Valle	78617	41	54	72	84	74	80.49%
Austin	78719	4	7	6	8	8	100.00%
Austin	78741	249	271	294	294	289	16.06%
Austin	78742	2	5	9	7	7	250.00%
Austin	78744	152	193	221	223	223	46.71%
Austin	78747	55	72	1	54	87	58.18%
Total		503	602	603	670	688	36.78%
%of Grand Total		5.82%	5.77%	5.86%	6.78%	6.54%	
Austin/Travis County, Southwest							
Austin	78735	64	65	77	76	86	34.38%
Austin	78736	55	43	61	61	55	0.00%
Austin	78739	45	67	60	79	71	57.78%
Austin	78746	117	129	117	160	155	32.48%
Austin	78749	231	268	234	240	249	7.79%
Total		512	572	549	616	616	20.31%
%of Grand Total		5.93%	5.48%	5.33%	6.23%	5.86%	
Bastrop County¹							
Bastrop	78602	56	71	95	65	70	25.00%
Cedar Creek	78612	34	38	51	35	30	-11.76%
Elgin	78621	53	60	68	54	50	-5.66%
McDade	78650	4	6	1	6	2	-50.00%
Paige	78659	7	8	11	5	7	0.00%
Red Rock	78662	5	8	9	4	5	0.00%
Rosanky	78953	2	3	2	1	2	0.00%
Smithville	78957	20	28	35	27	22	10.00%
Total		181	222	272	197	188	3.87%
%of Grand Total		2.10%	2.13%	2.64%	1.99%	1.79%	

¹ These numbers do not represent total headcount for the county due to zip codes that span more than one county.

NOTE: Headcount is based on zip code data as reported and entered in the ACC database. Zip code regions are based on definitions developed by ACC administration.

Source: Office of Institutional Effectiveness and Accountability

**Continuing Education
Annual Headcount by Region and Zip Code (continued)
Academic Year 2003 - 2007**

Region	Zip Code	2002-03	2003-04	2004-05	2005-06	2006-07	03-07 %chg
Blanco County¹							
Blanco	78606	7	7	9	0	2	-71.43%
Johnson City	78636	7	6	3	3	2	-71.43%
Round Mountain	78663	0	0	0	2	0	.
Total		14	13	12	5	4	-71.43%
%of Grand Total		0.16%	0.12%	0.12%	0.05%	0.04%	
Burnet County¹							
Bertram	78605	5	5	17	9	10	100.00%
Briggs	78608	0	0	0	1	0	.
Burnet	78611	19	14	11	15	13	-31.58%
Marble Falls	78654	10	23	22	23	17	70.00%
Total		34	42	50	48	40	17.65%
%of Grand Total		0.39%	0.40%	0.49%	0.49%	0.38%	
Caldwell County¹							
Dale	78616	14	16	20	14	12	-14.29%
Lockhart	78644	22	33	40	33	38	72.73%
Luling	78648	19	6	4	5	7	-63.16%
Martindale	78655	2	7	2	3	10	400.00%
Maxwell	78656	3	8	5	1	4	33.33%
Total		60	70	71	56	71	18.33%
%of Grand Total		0.69%	0.67%	0.69%	0.57%	0.68%	
Cedar Park/Leander							
Cedar Park	78613	324	425	429	409	419	29.32%
Leander	78641	163	222	252	246	259	58.90%
Liberty Hill	78642	30	27	24	20	23	-23.33%
Total		517	674	705	675	701	35.59%
%of Grand Total		5.99%	6.46%	6.85%	6.83%	6.67%	

¹ These numbers do not represent total headcount for the county due to zip codes that span more than one county.

NOTE: Headcount is based on zip code data as reported and entered in the ACC database. Zip code regions are based on definitions developed by ACC administration.

Source: Office of Institutional Effectiveness and Accountability

**Continuing Education
Annual Headcount by Region and Zip Code (continued)
Academic Year 2003 - 2007**

Region	Zip Code	2002-03	2003-04	2004-05	2005-06	2006-07	03-07 %chg
Georgetown/North Williamson County							
Florence	76527	6	16	12	9	18	200.00%
Granger	76530	6	17	11	6	7	16.67%
Jarrell	76537	6	15	6	5	8	33.33%
Georgetown	78626	93	111	83	68	75	-19.35%
Georgetown	78628	149	185	116	109	105	-29.53%
Total		260	344	228	197	213	-18.08%
%of Grand Total		3.01%	3.30%	2.21%	1.99%	2.03%	
Gillespie County¹							
Fredericksburg	78624	21	11	12	12	4	-80.95%
Harper	78631	0	0	0	1	1	.
Stonewall	78671	1	0	0	0	0	-100.00%
Total		22	11	12	13	5	-77.27%
%of Grand Total		0.25%	0.11%	0.12%	0.13%	0.05%	
Hays County¹							
Buda	78610	45	58	51	65	77	71.11%
Driftwood	78619	7	8	7	9	13	85.71%
Dripping Springs	78620	40	54	43	37	45	12.50%
Kyle	78640	68	79	106	107	112	64.71%
San Marcos	78666	107	119	98	88	122	14.02%
Wimberley	78676	40	30	29	24	32	-20.00%
Austin	78737	45	47	37	59	43	-4.44%
Total		352	395	371	389	444	26.14%
%of Grand Total		4.08%	3.79%	3.60%	3.94%	4.22%	
Manor/East Travis County							
Manor	78653	47	61	94	86	96	104.26%
Austin	78724	65	106	89	72	83	27.69%
Austin	78725	24	26	25	20	35	45.83%
Total		136	193	208	178	214	57.35%
%of Grand Total		1.57%	1.85%	2.02%	1.80%	2.03%	

¹ These numbers do not represent total headcount for the county due to zip codes that span more than one county.

NOTE: Headcount is based on zip code data as reported and entered in the ACC database. Zip code regions are based on definitions developed by ACC administration.

Source: Office of Institutional Effectiveness and Accountability

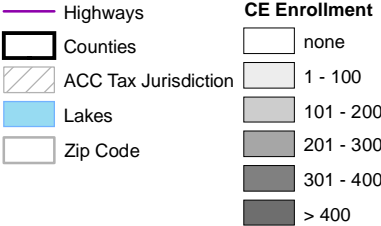
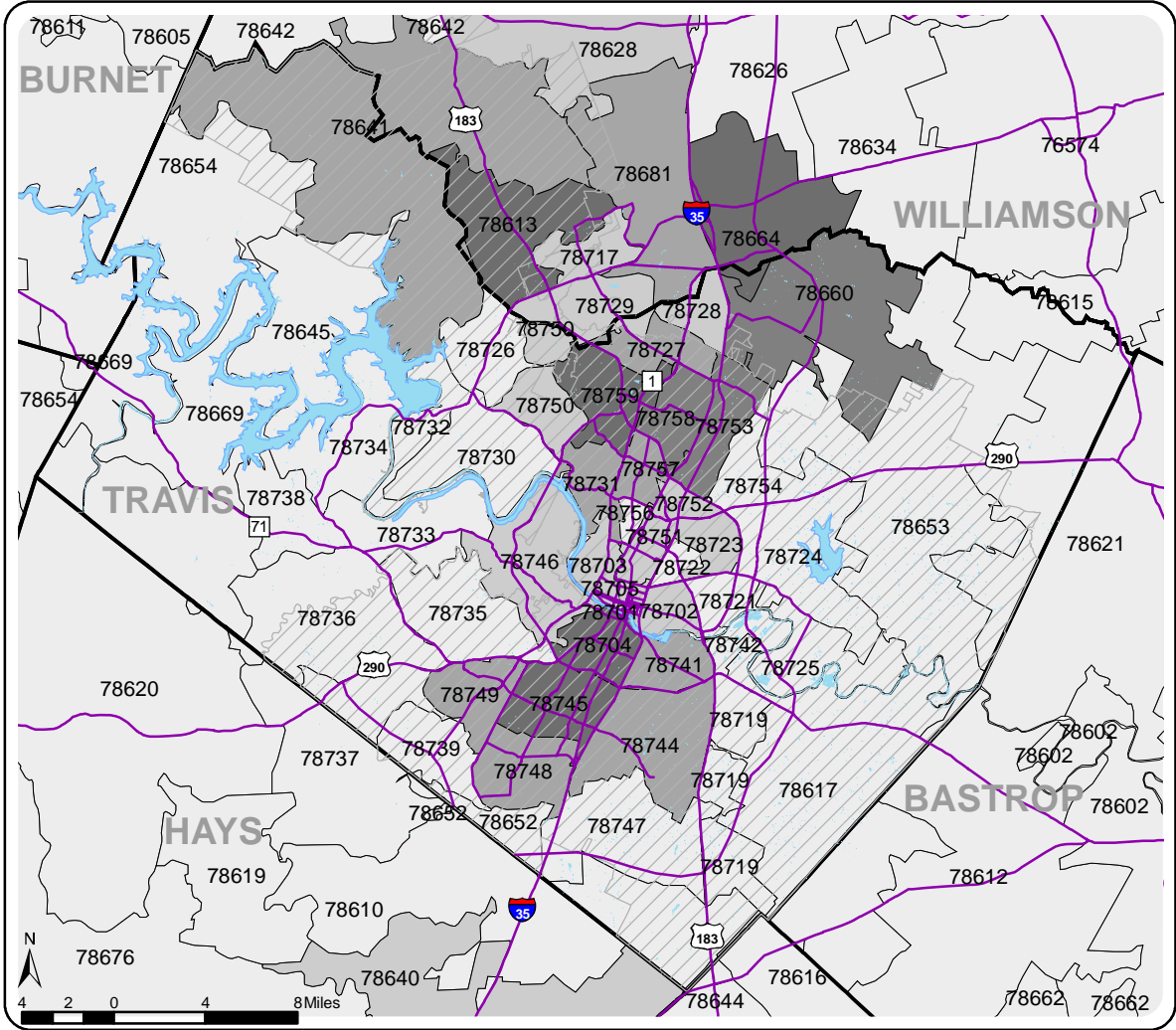
**Continuing Education
Annual Headcount by Region and Zip Code (continued)
Academic Year 2003 - 2007**

Region	Zip Code	2002-03	2003-04	2004-05	2005-06	2006-07	03-07 %chg
Pflugerville/Northeast Travis County							
Pflugerville	78660	177	241	305	283	339	91.53%
Austin	78753	319	424	391	358	353	10.66%
Austin	78754	60	81	79	98	80	33.33%
Total		556	746	775	739	772	38.85%
% of Grand Total		6.44%	7.15%	7.53%	7.48%	7.34%	
Round Rock							
Round Rock	78664	272	439	411	412	403	48.16%
Round Rock	78681	150	192	202	209	213	42.00%
Austin	78717	39	68	102	71	104	166.67%
Austin	78729	119	168	177	167	170	42.86%
Total		580	867	892	859	890	53.45%
% of Grand Total		6.72%	8.31%	8.66%	8.69%	8.46%	
Taylor/Hutto/East Williamson County							
Taylor	76574	35	56	57	32	27	-22.86%
Thrall	76578	2	4	4	6	3	50.00%
Coupland	78615	2	3	5	4	4	100.00%
Hutto	78634	25	55	55	56	63	152.00%
Total		64	118	121	98	97	51.56%
% of Grand Total		0.74%	1.13%	1.18%	0.99%	0.92%	
West Travis County							
Leander	78645	46	77	53	59	51	10.87%
Spicewood	78669	11	24	13	19	16	45.45%
Austin	78732	26	30	30	27	45	73.08%
Austin	78733	22	27	25	27	38	72.73%
Austin	78734	38	46	60	75	61	60.53%
Austin	78738	18	18	27	30	33	83.33%
Total		161	222	208	237	244	51.55%
% of Grand Total		1.86%	2.13%	2.02%	2.40%	2.32%	
Other/Unknown		691	722	752	745	1,062	53.69%
% of Grand Total		8.00%	6.92%	7.30%	7.54%	10.10%	
Grand Total		8,637	10,435	10,295	9,882	10,517	21.77%

NOTE: Headcount is based on zip code data as reported and entered in the ACC database. Zip code regions are based on definitions developed by ACC administration.

Source: Office of Institutional Effectiveness and Accountability

Continuing Education Annual Headcount by Zip Code Map Academic Year 2007



NOTE: Headcount is based on zip code data as reported and entered in the ACC database.

Source: Office of Institutional Effectiveness and Accountability

**Continuing Education
Annual Headcount by Zip Code
Academic Year 2003 - 2007**

Zip Code	Region	AY 2003	AY 2004	AY 2005	AY 2006	AY 2007	03-07 %chg
76527	Florence	6	16	12	9	18	200.00%
76530	Granger	6	17	11	6	7	16.67%
76537	Jarrell	6	15	6	5	8	33.33%
76574	Taylor	35	56	57	32	27	-22.86%
76578	Thrall	2	4	4	6	3	50.00%
78602	Bastrop	56	71	95	65	70	25.00%
78605	Bertram	5	5	17	9	10	100.00%
78606	Blanco	7	7	9	0	2	-71.43%
78608	Briggs	0	0	0	1	0	.
78610	Buda	45	58	51	65	77	71.11%
78611	Burnet	19	14	11	15	13	-31.58%
78612	Cedar Creek	34	38	51	35	30	-11.76%
78613	Cedar Park	324	425	429	409	419	29.32%
78615	Coupland	2	3	5	4	4	100.00%
78616	Dale	14	16	20	14	12	-14.29%
78617	Del Valle	41	54	72	84	74	80.49%
78619	Driftwood	7	8	7	9	13	85.71%
78620	Dripping Springs	40	54	43	37	45	12.50%
78621	Elgin	53	60	68	54	50	-5.66%
78624	Fredericksburg	21	11	12	12	4	-80.95%
78626	Georgetown	93	111	83	68	75	-19.35%
78628	Georgetown	149	185	116	109	105	-29.53%
78631	Harper	0	0	0	1	1	.
78634	Hutto	25	55	55	56	63	152.00%
78636	Johnson City	7	6	3	3	2	-71.43%
78640	Kyle	68	79	106	107	112	64.71%
78641	Leander	163	222	252	246	259	58.90%
78642	Liberty Hill	30	27	24	20	23	-23.33%
78644	Lockhart	22	33	40	33	38	72.73%
78645	Leander	46	77	53	59	51	10.87%
78648	Luling	19	6	4	5	7	-63.16%
78650	McDade	4	6	1	6	2	-50.00%
78652	Manchaca	29	21	23	14	20	-31.03%
78653	Manor	47	61	94	86	96	104.26%
78654	Marble Falls	10	23	22	23	17	70.00%
78655	Martindale	2	7	2	3	10	400.00%
78656	Maxwell	3	8	5	1	4	33.33%
78659	Paige	7	8	11	5	7	0.00%

¹ These numbers do not represent total headcount for the county due to zip codes that span more than one county.

NOTE: Headcount is based on zip code data as reported and entered in the ACC database. Zip code regions are based on definitions developed by ACC administration.

Source: Office of Institutional Effectiveness and Accountability

**Continuing Education
Annual Headcount by Zip Code (continued)
Academic Year 2003 - 2007**

Zip Code	Region	AY 2003	AY 2004	AY 2005	AY 2006	AY 2007	03-07 %chg	
78660	Pflugerville	Pflugerville/Northeast Travis County	177	241	305	283	339	91.53%
78662	Red Rock	Bastrop County ¹	5	8	9	4	5	0.00%
78663	Round Mountain	Blanco County ¹	0	0	0	2	0	.
78664	Round Rock	Round Rock	272	439	411	412	403	48.16%
78666	San Marcos	Hays County ¹	107	119	98	88	122	14.02%
78669	Spicewood	West Travis County	11	24	13	19	16	45.45%
78671	Stonewall	Gillespie County ¹	1	0	0	0	0	-100.00%
78676	Wimberley	Hays County ¹	40	30	29	24	32	-20.00%
78681	Round Rock	Round Rock	150	192	202	209	213	42.00%
78701	Austin	Austin, Central	72	96	69	102	109	51.39%
78702	Austin	Austin, East	123	144	150	113	107	-13.01%
78703	Austin	Austin, Central	138	180	138	138	152	10.14%
78704	Austin	Austin/Travis County, South	447	449	466	423	423	-5.37%
78705	Austin	Austin, Central	141	124	106	111	125	-11.35%
78712	Austin	Austin, Central	0	1	3	1	0	.
78717	Austin	Round Rock	39	68	102	71	104	166.67%
78719	Austin	Austin/Travis County, Southeast	4	7	6	8	8	100.00%
78721	Austin	Austin, East	61	64	60	58	59	-3.28%
78722	Austin	Austin, East	57	71	53	51	65	14.04%
78723	Austin	Austin, East	184	212	215	155	156	-15.22%
78724	Austin	Manor/East Travis County	65	106	89	72	83	27.69%
78725	Austin	Manor/East Travis County	24	26	25	20	35	45.83%
78726	Austin	Austin, Northwest	46	77	77	67	61	32.61%
78727	Austin	Austin, North	250	296	275	307	279	11.60%
78728	Austin	Austin, North	91	119	187	127	125	37.36%
78729	Austin	Round Rock	119	168	177	167	170	42.86%
78730	Austin	Austin, Northwest	30	33	34	37	30	0.00%
78731	Austin	Austin, Northwest	213	233	245	227	244	14.55%
78732	Austin	West Travis County	26	30	30	27	45	73.08%
78733	Austin	West Travis County	22	27	25	27	38	72.73%
78734	Austin	West Travis County	38	46	60	75	61	60.53%
78735	Austin	Austin/Travis County, Southwest	64	65	77	76	86	34.38%
78736	Austin	Austin/Travis County, Southwest	55	43	61	61	55	0.00%
78737	Austin	Hays County ¹	45	47	37	59	43	-4.44%
78738	Austin	West Travis County	18	18	27	30	33	83.33%
78739	Austin	Austin/Travis County, Southwest	45	67	60	79	71	57.78%
78741	Austin	Austin/Travis County, Southeast	249	271	294	294	289	16.06%
78742	Austin	Austin/Travis County, Southeast	2	5	9	7	7	250.00%
78744	Austin	Austin/Travis County, Southeast	152	193	221	223	223	46.71%

¹ These numbers do not represent total headcount for the county due to zip codes that span more than one county.

NOTE: Headcount is based on zip code data as reported and entered in the ACC database. Zip code regions are based on definitions developed by ACC administration.

Source: Office of Institutional Effectiveness and Accountability

**Continuing Education
Annual Headcount by Zip Code (continued)
Academic Year 2003 - 2007**

Zip Code	Region	AY 2003	AY 2004	AY 2005	AY 2006	AY 2007	03-07 %chg
78745	Austin Austin/Travis County, South	431	508	484	454	504	16.94%
78746	Austin Austin/Travis County, Southwest	117	129	117	160	155	32.48%
78747	Austin Austin/Travis County, Southeast	55	72	1	54	87	58.18%
78748	Austin Austin/Travis County, South	236	277	289	281	294	24.58%
78749	Austin Austin/Travis County, Southwest	231	268	234	240	249	7.79%
78750	Austin Austin, Northwest	130	184	142	154	161	23.85%
78751	Austin Austin, Central	108	117	127	109	120	11.11%
78752	Austin Austin, Central	120	143	116	106	109	-9.17%
78753	Austin Pflugerville/Northeast Travis County	319	424	391	358	353	10.66%
78754	Austin Pflugerville/Northeast Travis County	60	81	79	98	80	33.33%
78756	Austin Austin, Central	75	78	68	52	76	1.33%
78757	Austin Austin, Central	214	239	234	218	205	-4.21%
78758	Austin Austin, North	390	497	459	387	398	2.05%
78759	Austin Austin, Northwest	408	459	446	468	446	9.31%
78953	Rosanky Bastrop County ¹	2	3	2	1	2	0.00%
78957	Smithville Bastrop County ¹	20	28	35	27	22	10.00%
	Other/Unknown	691	722	752	745	1,062	53.69%
	GRAND TOTAL	8,637	10,435	10,295	9,882	10,517	21.77%

¹ These numbers do not represent total headcount for the county due to zip codes that span more than one county.

NOTE: Headcount is based on zip code data as reported and entered in the ACC database. Zip code regions are based on definitions developed by ACC administration.

Source: Office of Institutional Effectiveness and Accountability

**Continuing Education
Course Enrollment by Location
Academic Year 2007**

Location	2006-07	Percent of Total
Art Glass Fusing Center	94	0.54%
Artisan Stained Glass	4	0.02%
Associated Builders & Contractors (JATC)	83	0.48%
Austin Fire Department	889	5.15%
Austin Police Department	87	0.50%
Austin Recreation Center	22	0.13%
Bob Wentz Park At Windy Point	6	0.03%
Carpenters Hall (JATC)	48	0.28%
Cypress Creek Campus	155	0.90%
Dance International	107	0.62%
Decola & Eusebi Studio	15	0.09%
Eastview Campus	707	4.10%
Enchanted Rock State Natural Area	2	0.01%
Georgetown High School	17	0.10%
Georgetown Wesleyan Nursing	44	0.25%
Golden Vista Equestrian Center	35	0.20%
Govalle Care Center	52	0.30%
Harper-Chesser Historic Inn	5	0.03%
Highland Business Center	10,539	61.05%
Humane Society of Atc	43	0.25%
Intertech Flooring (JATC)	36	0.21%
Iron Workers (JATC)	133	0.77%
Metric Place Center	6	0.03%
Morris Williams Golf Course	8	0.05%
Northcross	4	0.02%
Northridge Campus	920	5.33%
Open Campus	2	0.01%
Out Back Stables	7	0.04%
Pinnacle Campus	152	0.88%
Pioneer Farms	44	0.25%
Rio Grande Campus	531	3.08%
Riverside Campus	1,062	6.15%
Round Rock Higher Education Center	2	0.01%
South Austin Campus	370	2.14%
State Theater School Acting	452	2.62%
Stonebridge Health Center, Inc	33	0.19%
Stony Point High School	17	0.10%
Texas Rowing Center	34	0.20%
Town Lake Animal Shelter	34	0.20%
Williamson County Workforce	362	2.10%
YMCA East Communities	86	0.50%
YMCA Northpark	15	0.09%
TOTAL	17,264	100.00%

¹ JATC is an abbreviation for Joint Apprenticeship and Training Committees.

NOTE: Students who enroll in more than one course are counted once for each course. Percents may not add to 100 due to rounding.

Source: Office of Institutional Effectiveness and Accountability

**Continuing Education
Course Enrollment by Program Area
Academic Year 2007**

Program Area	AY 2003	AY 2004	AY 2005	AY 2006	AY 2007	03-07 %chg
Apprenticeship	300	361	282	313	300	0.00%
Austin Quality	.	54
Business & Industry Institute	2,804	2,667	3,418	2,990	2,889	3.03%
Community Programs	1,962	1,917	1,746	3,717	4,394	123.96%
Computer Applications	1,844	2,222	1,912	1,824	2,095	13.61%
Customized Training	1,686	3,216	2,901	1,762	2,077	23.19%
Health Professions Institute	3,769	4,417	4,516	3,832	3,818	1.30%
High Technology Institute	342	493	584	756	954	178.95%
Independent Study	62	124	27	109	51	-17.74%
Job Entry Preparation	946	841	695	.	80	-91.54%
Management and Supervision	72	43	26	.	.	.
Non Profit	.	.	.	35	2	.
Teacher Certification	.	675	401	437	362	.
Truck Driving	416	371	425	495	242	-41.83%
TOTAL	14,203	17,401	16,933	16,270	17,264	21.55%

NOTE: Students who enroll in more than one course are counted once for each course. Percents may not add to 100 due to rounding.

Source: Office of Institutional Effectiveness and Accountability