

**Student Characteristics
District-wide
Fall 2004 - 2008**

	Fall 2004	Fall 2005	Fall 2006	Fall 2007	Fall 2008	04-08 % chg
Student Headcount	30,439	31,908	33,039	33,508	35,798	17.61%
Credit Hours	240,957	253,569	262,355	267,284	281,149	16.68%
Average Credit Hours	7.92	7.90	7.90	8.00	7.85	-0.79%
Contact Hours	4,615,496	4,832,704	5,016,656	5,123,072	5,386,376	16.70%
Average Contact Hours	151.63	151.50	151.80	152.90	150.47	-0.77%
Full-time Student Equivalent (FTSE)¹	16,064	16,905	17,490	17,819	18,743	16.68%
Residency						
In-District	21,177 69.57%	23,266 72.92%	23,533 71.23%	23,542 70.26%	27,221 76.04%	28.54%
Out-of-District	8,358 27.46%	7,719 24.19%	8,502 25.73%	9,081 27.10%	7,702 21.52%	-7.85%
Out-of-State/International	527 1.73%	575 1.80%	689 2.09%	573 1.71%	496 1.39%	-5.88%
Other/Unknown ²	377 1.24%	348 1.09%	315 0.95%	312 0.93%	379 1.06%	0.53%
Gender						
Male	13,293 43.67%	13,831 43.35%	14,498 43.88%	14,434 43.08%	15,486 43.26%	16.50%
Female	17,146 56.33%	18,077 56.65%	18,541 56.12%	19,074 56.92%	20,312 56.74%	18.46%
Student Status						
Part-time	22,074 72.52%	23,063 72.28%	23,821 72.10%	24,276 72.45%	26,470 73.94%	19.91%
Full-time ³	8,154 26.79%	8,818 27.64%	9,218 27.90%	9,232 27.55%	9,328 26.06%	14.40%
Ethnicity						
White	18,380 60.38%	19,097 59.85%	19,467 58.92%	19,810 59.12%	20,754 57.98%	12.92%
Black	2,194 7.21%	2,383 7.47%	2,557 7.74%	2,689 8.02%	2,978 8.32%	35.73%
Hispanic	6,822 22.41%	7,456 23.37%	8,014 24.26%	7,897 23.57%	8,846 24.71%	29.67%
Asian/Pacific Islander	1,600 5.26%	1,596 5.00%	1,598 4.84%	1,780 5.31%	2,029 5.67%	26.81%
Am. Indian/Alaskan Native	237 0.78%	231 0.72%	294 0.89%	293 0.87%	306 0.85%	29.11%
Non-Resident Alien	694 2.28%	652 2.04%	661 2.00%	558 1.67%	441 1.23%	-36.46%
Other/Unknown	512 1.68%	493 1.55%	448 1.36%	481 1.44%	444 1.24%	-13.28%
Age						
16 and Under	485 1.59%	620 1.94%	844 2.55%	859 2.56%	1,075 3.00%	121.65%
17	1,118 3.67%	1,382 4.33%	1,415 4.28%	1,655 4.94%	1,742 4.87%	55.81%
18	2,557 8.40%	2,840 8.90%	3,104 9.39%	3,197 9.54%	3,489 9.75%	36.45%
19-21	9,005 29.58%	9,300 29.15%	9,586 29.01%	9,809 29.27%	10,147 28.35%	12.68%
22-24	5,306 17.43%	5,428 17.01%	5,370 16.25%	5,273 15.74%	5,492 15.34%	3.51%
25-30	5,485 18.02%	5,636 17.66%	5,907 17.88%	5,861 17.49%	6,311 17.63%	15.06%
31-35	2,516 8.27%	2,518 7.89%	2,533 7.67%	2,489 7.43%	2,787 7.79%	10.77%
36-50	3,285 10.79%	3,444 10.79%	3,501 10.60%	3,558 10.62%	3,845 10.74%	17.05%
51-64	627 2.06%	673 2.11%	703 2.13%	715 2.13%	839 2.34%	33.81%
65 and Over	55 0.18%	67 0.21%	76 0.23%	85 0.25%	71 0.20%	29.09%
Unknown	0 0.00%	0 0.00%	0 0.00%	7 0.02%	0 0.00%	.
Average Age	25.60	25.50	25.40	25.30	25.40	-0.78%

¹ Full-time Student Equivalent (FTSE) is based on 15 SCH.
² Other includes students with tuition exemptions and waivers.
³ Full-time - 12 credit hours or more.

NOTE: Percents may not add to 100 due to rounding.

Source: Fall 12th Class Day Data

Student Characteristics
Full-Time Student Equivalent (FTSE)¹
Fall 2008

	Fall 2007		Fall 2008		07-08 % chg
Total Students	17,819		18,790		5.45%
Student Status					
Part-time	9,783	54.90%	10,688	56.88%	9.25%
Full-time ²	8,036	45.10%	8,102	43.12%	0.82%
Residency					
In-District	12,637	70.92%	14,389	76.58%	13.86%
Out-of-District	4,614	25.89%	3,826	20.36%	-17.08%
Out-of-State/International	328	1.84%	282	1.50%	-14.02%
Other/Unknown ³	241	1.35%	294	1.56%	21.99%
Gender					
Male	9,773	54.85%	10,249	54.54%	4.87%
Female	8,046	45.15%	8,541	45.46%	6.15%
Ethnicity					
White	10,672	59.89%	11,022	58.66%	3.28%
Black	1,369	7.68%	1,488	7.92%	8.69%
Hispanic	4,084	22.92%	4,516	24.03%	10.58%
Asian/Pacific Islander	949	5.33%	1,102	5.86%	16.12%
Am. Indian/Alaskan Native	162	0.91%	167	0.89%	3.09%
Non-Resident Alien	334	1.87%	262	1.39%	-21.56%
Other/Unknown	249	1.40%	233	1.24%	-6.43%
Age					
16 and Under	255	1.43%	308	1.64%	20.78%
17	571	3.20%	580	3.09%	1.58%
18	2,129	11.95%	2,299	12.24%	7.98%
19-21	6,127	34.38%	6,313	33.60%	3.04%
22-24	2,852	16.01%	2,948	15.69%	3.37%
25-30	2,952	16.57%	3,141	16.72%	6.40%
31-35	1,141	6.40%	1,287	6.85%	12.80%
36-50	1,499	8.41%	1,579	8.40%	5.34%
51-64	267	1.50%	316	1.68%	18.35%
65 and Over	24	0.13%	19	0.10%	-20.83%
Unknown	2	0.01%	0	0.00%	-100.00%

¹ Full-time Student Equivalent (FTSE) is based on 15 SCH.

² Other includes students with tuition exemptions and waivers.

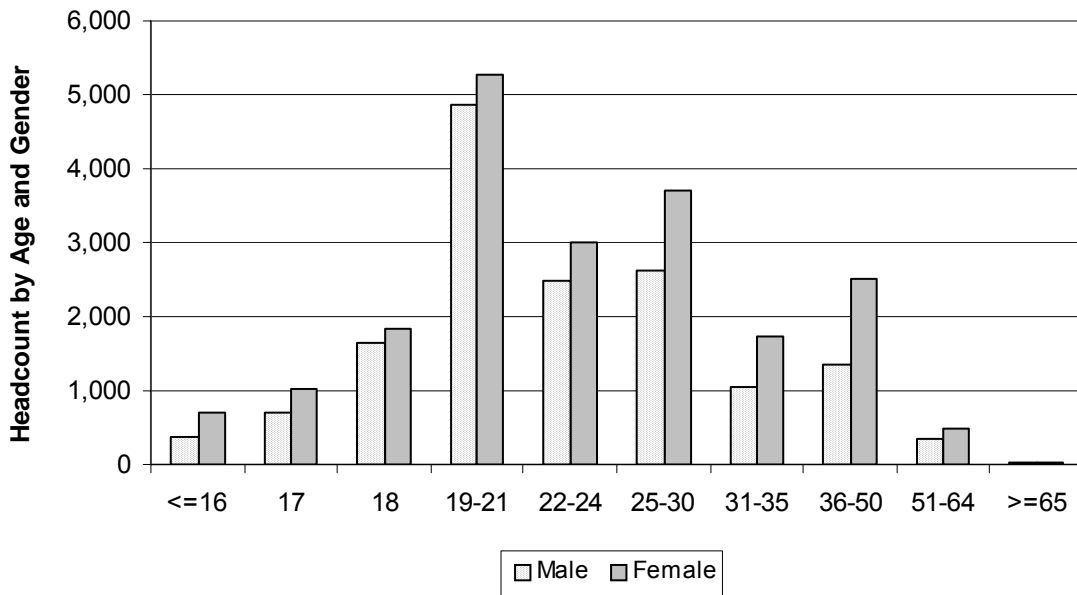
³ Full-time - 12 credit hours or more.

NOTE: Percents may not add to 100 and some numbers may not add up to the totals due to rounding.

Source: Fall 12th Class Day Data

**Student Characteristics
Headcount by Age and Gender
Fall 2008**

Age	Male		Female		Total	
16 and Under	376	2.43%	699	3.44%	1,075	3.00%
17	707	4.57%	1,035	5.10%	1,742	4.87%
18	1,644	10.62%	1,845	9.08%	3,489	9.75%
19-21	4,869	31.44%	5,278	25.98%	10,147	28.35%
22-24	2,490	16.08%	3,002	14.78%	5,492	15.34%
25-30	2,621	16.92%	3,690	18.17%	6,311	17.63%
31-35	1,065	6.88%	1,722	8.48%	2,787	7.79%
36-50	1,338	8.64%	2,507	12.34%	3,845	10.74%
51-64	340	2.20%	499	2.46%	839	2.34%
65 and Over	36	0.23%	35	0.17%	71	0.20%
TOTAL	15,486	100.00%	20,312	100.00%	35,798	100.00%

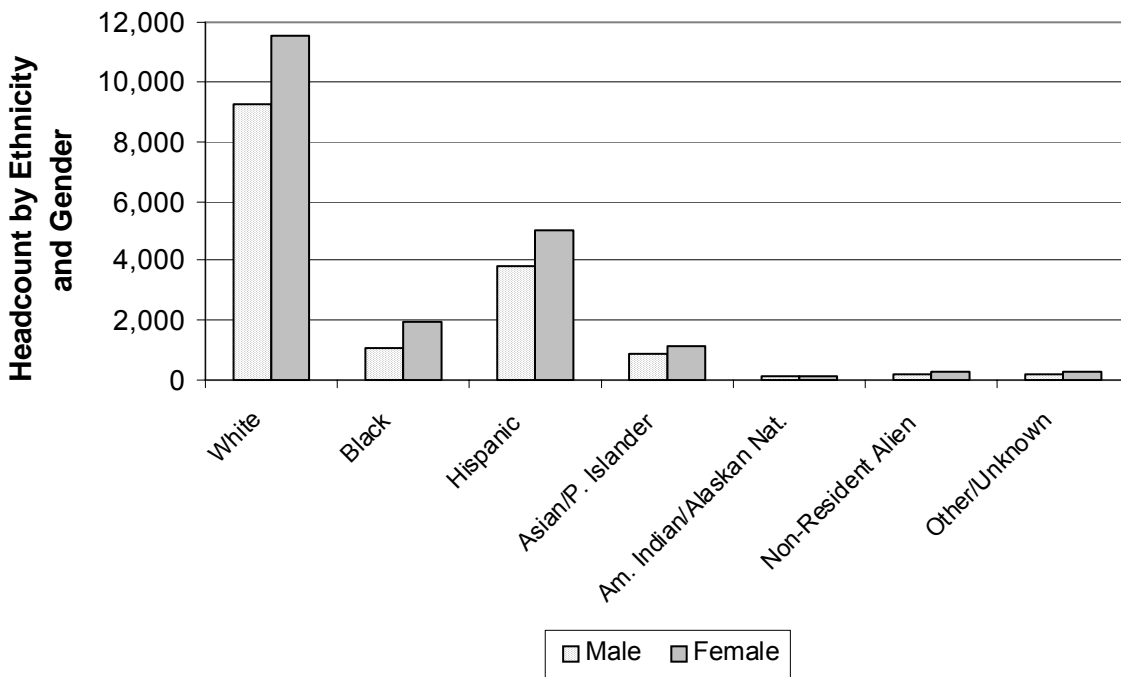


NOTE: Percents may not add to 100 due to rounding.

Source: Fall 12th Class Day Data

Student Characteristics Headcount by Ethnicity and Gender Fall 2008

Ethnicity	Male		Female		Total	
White	9,229	59.60%	11,525	56.74%	20,754	57.98%
Black	1,065	6.88%	1,913	9.42%	2,978	8.32%
Hispanic	3,794	24.50%	5,052	24.87%	8,846	24.71%
Asian/Pacific Islander	873	5.64%	1,156	5.69%	2,029	5.67%
Am. Indian/Alaskan Native	156	1.01%	150	0.74%	306	0.85%
Non-Resident Alien	192	1.24%	249	1.23%	441	1.23%
Other/Unknown	177	1.14%	267	1.31%	444	1.24%
TOTAL	15,486	100.00%	20,312	100.00%	35,798	100.00%



NOTE: Percents may not add to 100 due to rounding.

Source: Fall 12th Class Day Data

**Student Characteristics
Headcount by Gender and Full/Part-time Status
Fall 2008**

Gender	Full-time		Part-time		Total	
Male	4,708	50.47%	10,778	40.72%	15,486	43.26%
Female	4,620	49.53%	15,692	59.28%	20,312	56.74%
TOTAL	9,328	100.00%	26,470	100.00%	35,798	100.00%

**Student Characteristics
Headcount by Ethnicity and Full/Part-time Status
Fall 2008**

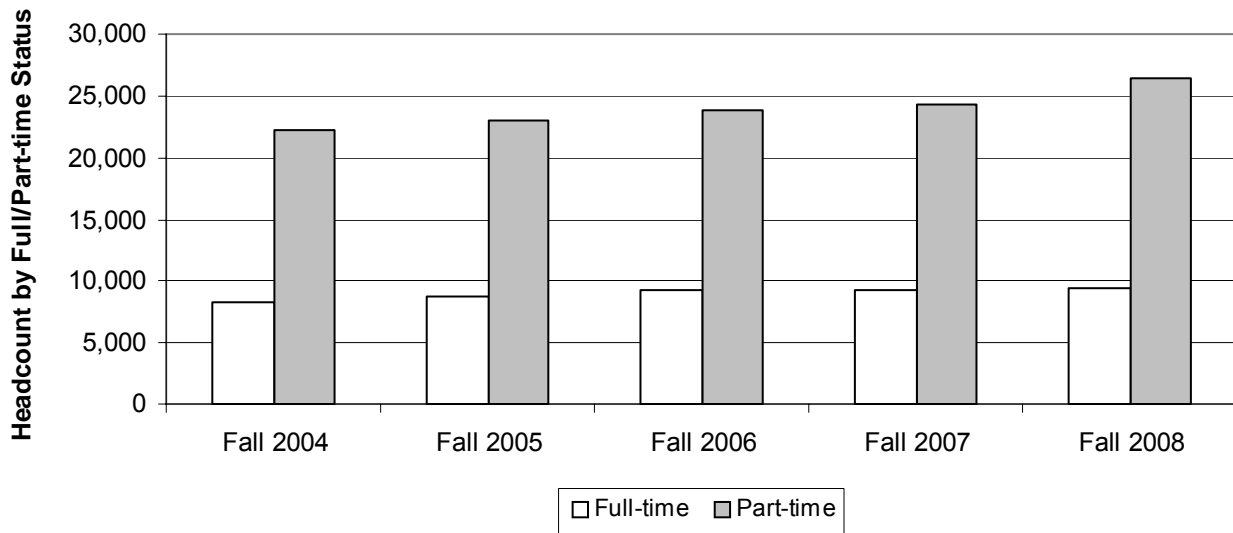
Ethnicity	Full-time		Part-time		Total	
White	5,701	61.12%	15,053	56.87%	20,754	57.98%
Black	614	6.58%	2,364	8.93%	2,978	8.32%
Hispanic	2,016	21.61%	6,830	25.80%	8,846	24.71%
Asian/Pacific Islander	619	6.64%	1,410	5.33%	2,029	5.67%
Am. Indian/Alaskan Native	91	0.98%	215	0.81%	306	0.85%
Non-Resident Alien	187	2.00%	254	0.96%	441	1.23%
Other/Unknown	100	1.07%	344	1.30%	444	1.24%
TOTAL	9,328	100.00%	26,470	100.00%	35,798	100.00%

NOTE: Percents may not add to 100 due to rounding.

Source: Fall 12th Class Day Data

Student Characteristics Headcount by Full/Part-time Status Fall 2004 - 2008

	Fall 2004	Fall 2005	Fall 2006	Fall 2007	Fall 2008	04-08 % chg
FULL-TIME STUDENTS¹						
Headcount	8,247	8,829	9,218	9,232	9,328	13.11%
% of Total	27.09%	27.67%	27.90%	27.55%	26.06%	
Average Hours Attempted	13.10	13.00	13.00	13.06	13.03	-0.53%
PART-TIME STUDENTS²						
Headcount	22,192	23,079	23,821	24,276	26,470	19.28%
% of Total	72.91%	72.33%	72.10%	72.45%	73.94%	
Average Hours Attempted	6.00	6.00	6.00	6.05	6.06	1.00%
TOTAL HEADCOUNT	30,439	31,908	33,039	33,508	35,798	17.61%



¹ Full-time students are those enrolled in 12 or more semester credit hours
² Part-time students are those enrolled in less than 12 semester credit hours.

NOTE: Percents may not add to 100 due to rounding.

Source: Fall 12th Class Day Data

**Student Characteristics
Headcount by Day/Evening Classification
Fall 2004 - 2008**

Classification	Fall 2004	Fall 2005	Fall 2006	Fall 2007	Fall 2008	04-08 %chg
Day	14,229	15,367	15,927	16,089	17,279	21.44%
%of Total	46.75%	48.16%	48.21%	48.02%	48.27%	
Evening	4,407	4,529	4,640	4,319	4,322	-1.93%
%of Total	14.48%	14.19%	14.04%	12.89%	12.07%	
Telecommunicated	2,360	2,518	2,569	2,926	3,018	27.88%
%of Total	7.75%	7.89%	7.78%	8.73%	8.43%	
Day & Evening	5,713	5,790	6,023	6,155	6,547	14.60%
%of Total	18.77%	18.15%	18.23%	18.37%	18.29%	
Day & Telecommunicated	1,992	2,027	2,211	2,232	2,523	26.66%
%of Total	6.54%	6.35%	6.69%	6.66%	7.05%	
Evening & Telecommunicated	874	820	866	953	1,103	26.20%
%of Total	2.87%	2.57%	2.62%	2.84%	3.08%	
Day & Evening & Telecommunicated	739	686	700	761	808	9.34%
%of Total	2.43%	2.15%	2.12%	2.27%	2.26%	
Non-identifiable	125	171	103	73	198	58.40%
%of Total	0.41%	0.54%	0.31%	0.22%	0.55%	
Total	30,439	31,908	33,039	33,508	35,798	17.61%

NOTES: Classifications are mutually exclusive. Day students are enrolled in courses that begin before 5:30 PM and evening students are enrolled in courses that begin at or after 5:30 PM. The "Non-identifiable" category includes self-paced courses and courses without designated meeting times. Percents may not add to 100 due to rounding.

Source: Fall 12th Class Day Data

**Headcount by Region and Zip Code
Fall 2004 - 2008**

Region	Zip Code	Fall 2004	Fall 2005	Fall 2006	Fall 2007	Fall 2008	04-08 %chg
Austin/Travis County, Central							
Austin	78701	112	140	127	109	114	1.79%
Austin	78703	404	389	369	342	351	-13.12%
Austin	78705	1,014	940	918	949	940	-7.30%
Austin	78712	0	1	0	1	0	.
Austin	78751	501	507	515	480	499	-0.40%
Austin	78752	370	338	349	329	359	-2.97%
Austin	78756	190	170	190	193	185	-2.63%
Austin	78757	587	588	556	522	499	-14.99%
Total		3,178	3,073	3,024	2,925	2,947	-7.27%
% of Grand Total		10.44%	9.63%	9.15%	8.73%	8.23%	
Austin/Travis County, East							
Austin	78702	447	479	460	480	531	18.79%
Austin	78721	184	198	182	194	235	27.72%
Austin	78722	186	198	185	187	173	-6.99%
Austin	78723	618	557	533	507	541	-12.46%
Total		1,435	1,432	1,360	1,368	1,480	3.14%
% of Grand Total		4.71%	4.49%	4.12%	4.08%	4.13%	
Austin/Travis County, North							
Austin	78727	676	686	763	751	740	9.47%
Austin	78728	308	336	327	337	403	30.84%
Austin	78758	1,469	1,456	1,381	1,444	1,391	-5.31%
Total		2,453	2,478	2,471	2,532	2,534	3.30%
% of Grand Total		8.06%	7.77%	7.48%	7.56%	7.08%	
Austin/Travis County, Northwest							
Austin	78726	323	325	312	304	335	3.72%
Austin	78730	110	102	120	98	112	1.82%
Austin	78731	507	541	501	503	461	-9.07%
Austin	78750	382	414	439	463	525	37.43%
Austin	78759	1,019	1,046	930	975	944	-7.36%
Total		2,341	2,428	2,302	2,343	2,377	1.54%
% of Grand Total		7.69%	7.61%	6.97%	6.99%	6.64%	

NOTES: Headcount based on zip code data as reported and entered in the ACC database. Zip code regions are based on definitions developed by ACC administration.

Source: Fall 12th Class Day Data

Headcount by Region and Zip Code (continued)
Fall 2004 - 2008

Region	Zip Code	Fall 2004	Fall 2005	Fall 2006	Fall 2007	Fall 2008	04-08 %chg
Austin/Travis County, South							
Manhaca	78652	100	97	115	88	108	8.00%
Austin	78704	1,302	1,317	1,237	1,134	1,229	-5.61%
Austin	78745	1,743	1,722	1,791	1,756	1,674	-3.96%
Austin	78748	1,045	1,045	1,121	1,166	1,251	19.71%
Total		4,190	4,181	4,264	4,144	4,262	1.72%
% of Grand Total		13.77%	13.10%	12.91%	12.37%	11.91%	
Austin/Travis County, Southeast							
Del Valle	78617	153	205	264	265	286	86.93%
Austin	78719	27	27	26	30	28	3.70%
Austin	78741	1,702	2,010	2,114	2,006	2,013	18.27%
Austin	78742	12	15	14	18	15	25.00%
Austin	78744	721	838	883	869	948	31.48%
Austin	78747	217	207	225	259	333	53.46%
Total		2,832	3,302	3,526	3,447	3,623	27.93%
% of Grand Total		9.30%	10.35%	10.67%	10.29%	10.12%	
Austin/Travis County, Southwest							
Austin	78735	271	265	259	257	282	4.06%
Austin	78736	218	218	234	240	240	10.09%
Austin	78739	241	280	296	328	348	44.40%
Austin	78746	309	317	353	355	322	4.21%
Austin	78749	1,120	1,086	1,044	1,064	1,046	-6.61%
Total		2,159	2,166	2,186	2,244	2,238	3.66%
% of Grand Total		7.09%	6.79%	6.62%	6.70%	6.25%	

NOTES: Headcount based on zip code data as reported and entered in the ACC database. Zip code regions are based on definitions developed by ACC administration.

Source: Fall 12th Class Day Data

**Headcount by Region and Zip Code (continued)
Fall 2004 - 2008**

Region	Zip Code	Fall 2004	Fall 2005	Fall 2006	Fall 2007	Fall 2008	04-08 %chg
Bastrop County¹							
Bastrop	78602	153	170	179	225	243	58.82%
Cedar Creek	78612	81	80	93	110	139	71.60%
Elgin	78621	136	146	168	183	214	57.35%
McDade	78650	9	9	14	8	9	0.00%
Paige	78659	15	14	25	17	12	-20.00%
Red Rock	78662	14	31	27	23	22	57.14%
Rosanky	78953	6	6	7	7	9	50.00%
Smithville	78957	53	46	50	65	53	0.00%
Total		467	502	563	638	701	50.11%
%of Grand Total		1.53%	1.57%	1.70%	1.90%	1.96%	
Blanco County¹							
Blanco	78606	16	35	36	28	27	68.75%
Hye	78635	2	2	3	0	2	0.00%
Johnson City	78636	26	29	33	38	27	3.85%
Round Mountain	78663	5	3	8	9	8	60.00%
Total		49	69	80	75	64	30.61%
%of Grand Total		0.16%	0.22%	0.24%	0.22%	0.18%	
Burnet County¹							
Bertram	78605	9	14	11	17	11	22.22%
Briggs	78608	0	0	0	2	1	.
Burnet	78611	24	29	22	21	13	-45.83%
Marble Falls	78654	45	30	42	36	35	-22.22%
Total		78	73	75	76	60	-23.08%
%of Grand Total		0.26%	0.23%	0.23%	0.23%	0.17%	

¹ These numbers do not represent total enrollment for the county due to zip codes that span more than one county.

NOTES: Headcount based on zip code data as reported and entered in the ACC database. Zip code regions are based on definitions developed by ACC administration.

Source: Fall 12th Class Day Data

**Headcount by Region and Zip Code (continued)
Fall 2004 - 2008**

Region	Zip Code	Fall 2004	Fall 2005	Fall 2006	Fall 2007	Fall 2008	04-08 %chg
Caldwell County¹							
Dale	78616	42	54	54	72	76	80.95%
Lockhart	78644	156	186	227	215	252	61.54%
Luling	78648	42	59	39	55	73	73.81%
Martindale	78655	30	26	34	24	20	-33.33%
Maxwell	78656	21	26	27	22	23	9.52%
Total		291	351	381	388	444	52.58%
%of Grand Total		0.96%	1.10%	1.15%	1.16%	1.24%	
Cedar Park/Leander							
Cedar Park	78613	1,264	1,480	1,466	1,602	1,742	37.82%
Leander	78641	795	884	874	981	1111	39.75%
Liberty Hill	78642	87	115	133	142	146	67.82%
Total		2,146	2,479	2,473	2,725	2,999	39.75%
%of Grand Total		7.05%	7.77%	7.49%	8.13%	8.38%	
Georgetown/North Williamson County							
Florence	76527	9	6	15	18	14	55.56%
Granger	76530	5	3	8	9	14	180.00%
Jarrell	76537	19	45	43	41	55	189.47%
Georgetown	78626	167	204	226	221	271	62.28%
Georgetown	78628	315	346	369	406	376	19.37%
Georgetown	78633	0	0	0	11	90	.
Total		515	604	661	706	820	59.22%
%of Grand Total		1.69%	1.89%	2.00%	2.07%	2.29%	
Gillespie County¹							
Doss	78618	2	4	2	5	0	-100.00%
Fredericksburg	78624	140	113	120	110	141	0.71%
Harper	78631	33	32	34	31	25	-24.24%
Stonewall	78671	3	2	3	0	5	66.67%
Willow City	78675	1	1	0	1	1	0.00%
Total		179	152	159	147	172	-3.91%
%of Grand Total		0.59%	0.48%	0.48%	0.44%	0.48%	

¹ These numbers do not represent total enrollment for the county due to zip codes that span more than one county.

NOTES: Headcount based on zip code data as reported and entered in the ACC database. Zip code regions are based on definitions developed by ACC administration.

Source: Fall 12th Class Day Data

**Headcount by Region and Zip Code (continued)
Fall 2004 - 2008**

Region	Zip Code	Fall 2004	Fall 2005	Fall 2006	Fall 2007	Fall 2008	04-08 %chg
Gonzales County							
Leesville	78122	1	1	1	3	2	100.00%
Nixon	78140	11	13	12	22	14	27.27%
Smiley	78159	2	3	6	5	1	-50.00%
Cost	78614	3	4	3	1	4	33.33%
Gonzales	78629	15	21	16	14	6	-60.00%
Waelder	78959	0	0	0	0	2	.
Total		32	42	38	45	29	-9.38%
% of Grand Total		0.11%	0.13%	0.12%	0.13%	0.08%	
Hays County¹							
Buda	78610	194	205	223	254	303	56.19%
Driftwood	78619	18	21	19	21	30	66.67%
Dripping Springs	78620	147	160	136	157	192	30.61%
Kyle	78640	207	277	323	394	438	111.59%
San Marcos	78666	608	584	648	699	691	13.65%
San Marcos	78667	20	17	19	11	14	-30.00%
Wimberley	78676	109	127	123	190	142	30.28%
Austin	78737	151	185	175	169	209	38.41%
Total		1,434	1,559	1,647	1,895	2,019	40.79%
% of Grand Total		4.71%	4.89%	4.99%	5.62%	5.64%	
Manor/East Travis County							
Manor	78653	193	227	258	309	370	91.71%
Austin	78724	226	226	225	246	276	22.12%
Austin	78725	65	89	105	115	132	103.08%
Total		484	542	588	670	778	60.74%
% of Grand Total		1.59%	1.70%	1.78%	2.00%	2.17%	
Pflugerville/Northeast Travis County							
Pflugerville	78660	619	678	778	873	991	60.10%
Austin	78753	930	996	1,003	1,008	1,044	12.26%
Austin	78754	230	260	287	317	370	60.87%
Total		1,779	1,934	2,068	2,198	2,405	35.19%
% of Grand Total		5.84%	6.06%	6.26%	6.56%	6.72%	

¹ These numbers do not represent total enrollment for the county due to zip codes that span more than one county.

NOTES: Headcount based on zip code data as reported and entered in the ACC database. Zip code regions are based on definitions developed by ACC administration.

Source: Fall 12th Class Day Data

Headcount by Region and Zip Code (continued) Fall 2004 - 2008

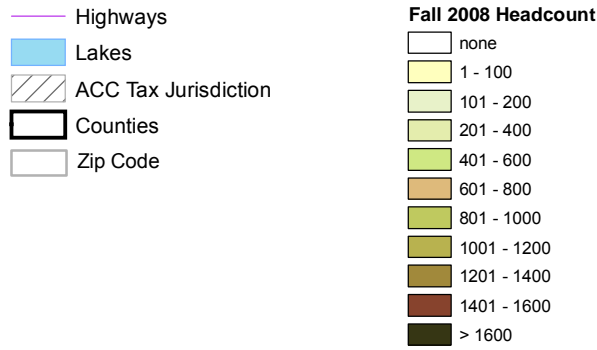
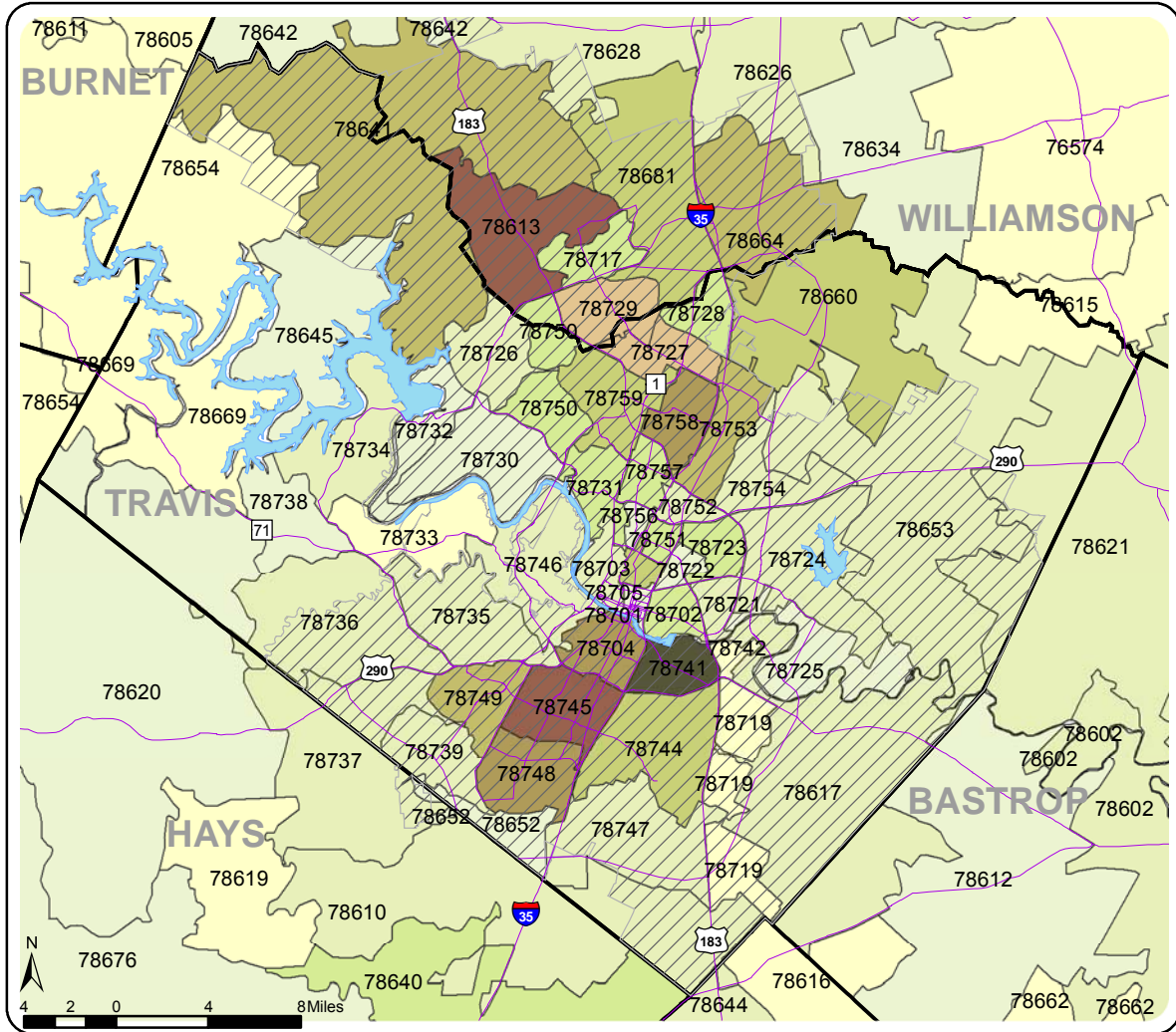
Region	Zip Code	Fall 2004	Fall 2005	Fall 2006	Fall 2007	Fall 2008	04-08 %chg
Round Rock							
Round Rock	78664	778	888	952	1,013	1,163	49.49%
Round Rock	78665	0	0	0	27	307	.
Round Rock	78681	565	544	584	603	846	49.73%
Austin	78717	231	278	358	357	432	87.01%
Austin	78729	434	497	474	544	645	48.62%
Total		2,008	2,207	2,368	2,544	3,393	68.97%
% of Grand Total		6.60%	6.92%	7.17%	7.51%	9.48%	
Taylor/Hutto/East Williamson County							
Taylor	76574	40	33	26	36	33	-17.50%
Thrall	76578	0	3	3	2	6	.
Coupland	78615	9	3	5	5	12	33.33%
Hutto	78634	87	93	118	171	182	109.20%
Total		136	132	152	214	233	71.32%
% of Grand Total		0.45%	0.41%	0.46%	0.64%	0.65%	
West Travis County							
Leander	78645	126	121	147	144	107	-15.08%
Spicewood	78669	64	41	60	53	68	6.25%
Austin	78732	83	105	114	148	136	63.86%
Austin	78733	86	79	77	81	84	-2.33%
Austin	78734	201	191	201	181	214	6.47%
Austin	78738	107	87	93	109	117	9.35%
Total		667	624	692	716	726	8.85%
% of Grand Total		2.19%	1.96%	2.09%	2.14%	2.03%	
Other/Unknown		1,566	1,561	1,942	1,468	1,494	-4.60%
Total		1,566	1,561	1,942	1,468	1,494	-4.60%
% of Grand Total		5.21%	4.95%	5.94%	4.53%	4.17%	
GRAND TOTAL		30,439	31,908	33,039	33,508	35,798	17.61%

NOTES: Headcount based on zip code data as reported and entered in the ACC database. Zip code regions are based on definitions developed by ACC administration.

Source: Fall 12th Class Day Data

Austin Community College Headcount by Zip Code Map Fall 2008

The shaded areas represent the zip code boundaries for data shown on the previous pages.



NOTE: Headcount based on zip code data as reported and entered in the ACC database.

Source: Fall 12th Class Day Data

Headcount by Zip Code Fall 2004 - 2008

Zip Code	Region	Fall 2004	Fall 2005	Fall 2006	Fall 2007	Fall 2008	04-08 % chg
76527	Florence	9	6	15	18	14	55.56%
76530	Granger	5	3	8	9	14	180.00%
76537	Jarrell	19	45	43	41	55	189.47%
76574	Taylor	40	33	26	36	33	-17.50%
76578	Thrall	0	3	3	2	6	.
78122	Leesville	1	1	1	3	2	100.00%
78140	Nixon	11	13	12	22	14	27.27%
78159	Smiley	2	3	6	5	1	-50.00%
78602	Bastrop	153	170	179	225	243	58.82%
78605	Bertram	9	14	11	17	11	22.22%
78606	Blanco	16	35	36	28	27	68.75%
78608	Briggs	0	0	0	2	1	.
78610	Buda	194	205	223	254	303	56.19%
78611	Burnet	24	29	22	21	13	-45.83%
78612	Cedar Creek	81	80	93	110	139	71.60%
78613	Cedar Park	1,264	1,480	1,466	1,602	1,742	37.82%
78614	Cost	3	4	3	1	4	33.33%
78615	Coupland	9	3	5	5	12	33.33%
78616	Dale	42	54	54	72	76	80.95%
78617	Del Valle	153	205	264	265	286	86.93%
78618	Doss	2	4	2	5	0	-100.00%
78619	Driftwood	18	21	19	21	30	66.67%
78620	Dripping Springs	147	160	136	157	192	30.61%
78621	Elgin	136	146	168	183	214	57.35%
78624	Fredericksburg	140	113	120	110	141	0.71%
78626	Georgetown	167	204	226	221	271	62.28%
78628	Georgetown	315	346	369	406	376	19.37%
78629	Gonzales	15	21	16	14	6	-60.00%
78631	Harper	33	32	34	31	25	-24.24%
78633	Georgetown	0	0	0	11	90	.
78634	Hutto	87	93	118	171	182	109.20%
78635	Hye	2	2	3	0	2	0.00%
78636	Johnson City	26	29	33	38	27	3.85%
78640	Kyle	207	277	323	394	438	111.59%
78641	Leander	795	884	874	981	1,111	39.75%
78642	Liberty Hill	87	115	133	142	146	67.82%
78644	Lockhart	156	186	227	215	252	61.54%
78645	Leander	126	121	147	144	107	-15.08%
78648	Luling	42	59	39	55	73	73.81%

¹ These numbers do not represent total enrollment for the county due to zip codes that span more than one county.

NOTES: Headcount based on zip code data as reported and entered in the ACC database. Zip code regions are based on definitions developed by ACC administration.

Source: Fall 12th Class Day Data

Headcount by Zip Code (continued)
Fall 2004 - 2008

Zip Code	Region	Fall 2004	Fall 2005	Fall 2006	Fall 2007	Fall 2008	04-08 %chg
78650	McDade Bastrop County ¹	9	9	14	8	9	0.00%
78652	Manchaca Austin/Travis County, South	100	97	115	88	108	8.00%
78653	Manor Manor/East Travis County	193	227	258	309	370	91.71%
78654	Marble Falls Burnet County ¹	45	30	42	36	35	-22.22%
78655	Martindale Caldwell County ¹	30	26	34	24	20	-33.33%
78656	Maxwell Caldwell County ¹	21	26	27	22	23	9.52%
78659	Paige Bastrop County ¹	15	14	25	17	12	-20.00%
78660	Pflugerville Pflugerville/Northeast Travis County	619	678	778	873	991	60.10%
78662	Red Rock Bastrop County ¹	14	31	27	23	22	57.14%
78663	Round Mountain Blanco County ¹	5	3	8	9	8	60.00%
78664	Round Rock Round Rock	778	888	952	1,013	1,163	49.49%
78665	Round Rock Round Rock	0	0	0	27	307	.
78666	San Marcos Hays County ¹	608	584	648	699	691	13.65%
78667	San Marcos Hays County ¹	20	17	19	11	14	-30.00%
78669	Spicewood West Travis County	64	41	60	53	68	6.25%
78671	Stonewall Gillespie County ¹	3	2	3	0	5	66.67%
78675	Willow City Gillespie County ¹	1	1	0	1	1	0.00%
78676	Wimberley Hays County ¹	109	127	123	190	142	30.28%
78681	Round Rock Round Rock	565	544	584	603	846	49.73%
78701	Austin Austin/Travis County, Central	112	140	127	109	114	1.79%
78702	Austin Austin/Travis County, East	447	479	460	480	531	18.79%
78703	Austin Austin/Travis County, Central	404	389	369	342	351	-13.12%
78704	Austin Austin/Travis County, South	1,302	1,317	1,237	1,134	1,229	-5.61%
78705	Austin Austin/Travis County, Central	1,014	940	918	949	940	-7.30%
78712	Austin Austin/Travis County, Central	0	1	0	1	0	.
78717	Austin Round Rock	231	278	358	357	432	87.01%
78719	Austin Austin/Travis County, Southeast	27	27	26	30	28	3.70%
78721	Austin Austin/Travis County, East	184	198	182	194	235	27.72%
78722	Austin Austin/Travis County, East	186	198	185	187	173	-6.99%
78723	Austin Austin/Travis County, East	618	557	533	507	541	-12.46%
78724	Austin Manor/East Travis County	226	226	225	246	276	22.12%
78725	Austin Manor/East Travis County	65	89	105	115	132	103.08%
78726	Austin Austin/Travis County, Northwest	323	325	312	304	335	3.72%
78727	Austin Austin/Travis County, North	676	686	763	751	740	9.47%
78728	Austin Austin/Travis County, North	308	336	327	337	403	30.84%
78729	Austin Round Rock	434	497	474	544	645	48.62%
78730	Austin Austin/Travis County, Northwest	110	102	120	98	112	1.82%
78731	Austin Austin/Travis County, Northwest	507	541	501	503	461	-9.07%
78732	Austin West Travis County	83	105	114	148	136	63.86%

¹ These numbers do not represent total enrollment for the county due to zip codes that span more than one county.

NOTES: Headcount based on zip code data as reported and entered in the ACC database. Zip code regions are based on definitions developed by ACC administration.

Source: Fall 12th Class Day Data

**Headcount by Zip Code (continued)
Fall 2004 - 2008**

Zip Code	Region	Fall 2004	Fall 2005	Fall 2006	Fall 2007	Fall 2008	04-08 %chg
78733	Austin West Travis County	86	79	77	81	84	-2.33%
78734	Austin West Travis County	201	191	201	181	214	6.47%
78735	Austin Austin/Travis County, Southwest	271	265	259	257	282	4.06%
78736	Austin Austin/Travis County, Southwest	218	218	234	240	240	10.09%
78737	Austin Hays County ¹	151	185	175	169	209	38.41%
78738	Austin West Travis County	107	87	93	109	117	9.35%
78739	Austin Austin/Travis County, Southwest	241	280	296	328	348	44.40%
78741	Austin Austin/Travis County, Southeast	1,702	2,010	2,114	2,006	2,013	18.27%
78742	Austin Austin/Travis County, Southeast	12	15	14	18	15	25.00%
78744	Austin Austin/Travis County, Southeast	721	838	883	869	948	31.48%
78745	Austin Austin/Travis County, South	1,743	1,722	1,791	1,756	1,674	-3.96%
78746	Austin Austin/Travis County, Southwest	309	317	353	355	322	4.21%
78747	Austin Austin/Travis County, Southeast	217	207	225	259	333	53.46%
78748	Austin Austin/Travis County, South	1,045	1,045	1,121	1,166	1251	19.71%
78749	Austin Austin/Travis County, Southwest	1,120	1,086	1,044	1,064	1,046	-6.61%
78750	Austin Austin/Travis County, Northwest	382	414	439	463	525	37.43%
78751	Austin Austin/Travis County, Central	501	507	515	480	499	-0.40%
78752	Austin Austin/Travis County, Central	370	338	349	329	359	-2.97%
78753	Austin Pflugerville/Northeast Travis County	930	996	1,003	1,008	1,044	12.26%
78754	Austin Pflugerville/Northeast Travis County	230	260	287	317	370	60.87%
78756	Austin Austin/Travis County, Central	190	170	190	193	185	-2.63%
78757	Austin Austin/Travis County, Central	587	588	556	522	499	-14.99%
78758	Austin Austin/Travis County, North	1,469	1,456	1,381	1,444	1,391	-5.31%
78759	Austin Austin/Travis County, Northwest	1,019	1,046	930	975	944	-7.36%
78953	Rosanky Bastrop County ¹	6	6	7	7	9	50.00%
78957	Smithville Bastrop County ¹	53	46	50	65	53	0.00%
78959	Waelder Gonzales County	0	0	0	0	2	.
	Other/Unknown	1,566	1,561	1,942	1,468	1,494	-4.60%
	GRAND TOTAL	30,439	31,908	33,039	33,508	35,798	17.61%

¹ These numbers do not represent total enrollment for the county due to zip codes that span more than one county.

NOTES: Headcount based on zip code data as reported and entered in the ACC database. Zip code regions are based on definitions developed by ACC administration.

Source: Fall 12th Class Day Data

**Declared Majors
Fall 2006 - 2008**

Associate of Arts (AA)

	Fall 2006	Fall 2007	Fall 2008	06-08 % chg
Anthropology	120	97	124	3.33%
Art	527	599	616	16.89%
Communications ¹	71	75	0	-100.00%
Creative Writing	46	34	42	-8.70%
Dance	80	75	82	2.50%
Drama	122	136	127	4.10%
Economics	148	127	173	16.89%
English	338	346	390	15.38%
Foreign Lanuage				
Arabic	0	0	6	.
Chinese	0	0	6	.
French	27	32	40	48.15%
General	3	4	4	33.33%
German	18	16	19	5.56%
Japanese	33	41	46	39.39%
Latin	1	1	4	300.00%
Russian	8	11	6	-25.00%
Spanish	124	131	146	17.74%
General Studies in Liberal Arts	2,838	2,654	3,279	15.54%
Early Childhood Education ¹	368	213	177	-51.90%
Grade 4-8 Certification ¹	80	43	33	-58.75%
Geography	36	34	43	19.44%
Geographic Information Systems	2	11	13	550.00%
Government	207	197	237	14.49%
History	313	273	350	11.82%
Journalism	250	268	280	12.00%
Music	346	414	437	26.30%
Performing Arts ¹	8	10	7	-12.50%
Philosophy	76	62	91	19.74%
Psychology	845	871	1,006	19.05%
Radio-Television-Film	403	376	425	5.46%
Social Work	206	189	248	20.39%
Sociology	118	111	140	18.64%
Speech	60	49	59	-1.67%
Undeclared	669	700	474	-29.15%
TOTAL	8,491	8,200	9,130	7.53%

¹ Program is no longer active, but students already in the pipeline may be allowed to complete the degree plan.

Source: Fall 12th Class Day Data

**Declared Majors
Fall 2006 - 2008**

Associate of Arts in Teaching (AAT)

	Fall 2006	Fall 2007	Fall 2008	06-08 % chg
Education				
8-12 Grade Levels	133	254	370	178.20%
EC-4 & 4-8 Grade Levels	91	179	307	237.36%
EC-4 Grade Levels - Early Childhood Specialization	193	451	607	214.51%
TOTAL	417	884	1,284	207.91%

Associate of Science (AS)

	Fall 2006	Fall 2007	Fall 2008	06-08 % chg
Archaeology	.	.	4	.
Biology	542	517	611	12.73%
Business Administration	1,632	1,592	2,027	24.20%
Chemistry	122	118	160	31.15%
Computer Science				
Computer Science	585	554	549	-6.15%
Computer Information Systems	.	.	9	.
Engineering	677	708	791	16.84%
Environmental Studies	56	54	84	50.00%
General Studies in Science	219	240	333	52.05%
Geology	67	52	52	-22.39%
Health & Kinesiology				
Health	228	216	242	6.14%
Kinesiology	337	261	358	6.23%
Mathematics	140	132	177	26.43%
Physical Sciences ¹	11	8	6	-45.45%
Physics - Astronomy	70	82	92	31.43%
Pre-Dental	154	141	129	-16.23%
Pre-Medical	536	665	653	21.83%
Pre-Pharmacy	222	236	266	19.82%
Pre-Veterinary	139	123	138	-0.72%
Undeclared	343	347	204	-40.52%
TOTAL	6,080	6,046	6,885	13.24%

¹ Program is no longer active, but students already in the pipeline may be allowed to complete the degree plan.

NOTE: A "." means that the program did not exist that semester.

Source: Fall 12th Class Day Data

**Declared Majors
Fall 2006 - 2008**

Associate of Applied Science (AAS)

	Fall 2006	Fall 2007	Fall 2008	06-08 % chg
Architectural and Engineering Computer Aided Design				
Architectural Specialization	3	57	142	4633.33%
Electronic Graphics Specialization	.	5	10	.
Interdisciplinary Specialization	2	6	11	450.00%
Mechanical Specialization	1	17	31	3000.00%
Accounting	71	75	52	-26.76%
Accounting Specialist	185	132	252	36.22%
Accounting Technician	73	199	122	67.12%
Professional Accountant ¹	212	90	105	-50.47%
Auto Body Collision and Refinishing	.	.	1	.
Automotive Technology	122	122	129	5.74%
Biotechnology	56	53	55	-1.79%
Building Construction Technology - Construction Management	63	60	86	36.51%
Business & Technical Communication	.	13	35	.
Business & Government Communications	64	99	105	64.06%
Technical Communications	83	78	93	12.05%
Business Management ¹	5	3	2	-60.00%
Child Development	173	150	157	-9.25%
Commercial Art ¹	16	14	17	6.25%
Commercial Music Management	192	182	227	18.23%
Computer Information Technology	58	56	49	-15.52%
Computer Programming	259	256	275	6.18%
Local Area Network Systems-Network Administration	112	116	98	-12.50%
Local Area Network Systems-Security Administration	.	.	31	.
Microcomputer Application Support	31	25	25	-19.35%
Microcomputer Applications - User & Desktop Support	.	3	8	.
Web Programming Specialization	1	10	18	1700.00%
Criminal Justice	6	1	3	-50.00%
Corrections	166	158	168	1.20%
Law Enforcement	405	379	495	22.22%
Law Enforcement Advanced Skills ¹	6	4	1	-83.33%
Culinary Arts	104	115	134	28.85%
Dental Hygiene	146	198	301	106.16%
Electronics and Advanced Technology				
Automation,Robotics and Control Technology	19	20	20	5.26%
Bioinstrumentation Technology Specialization	.	.	4	.
Computer Electronics/Telecommunications	26	24	26	0.00%
Electronic Technology ¹	1	2	.	.
Engineering	108	112	123	13.89%
Power Technology Specialization	2	14	19	850.00%

¹ Program is no longer active, but students already in the pipeline may be allowed to complete the degree plan.

NOTE: A "." means that the program did not exist that semester.

Source: Fall 12th Class Day Data

Declared Majors
Fall 2006 - 2008

Associate of Applied Science (AAS) (continued)

	Fall 2006	Fall 2007	Fall 2008	06-08 % chg
Electronics and Advanced Technology (continued)				
Renewable Energy Specialization	.	.	13	.
Robotics/Instrumentation & Control ¹	3	3	.	.
Semiconductor Manufacturing Technology Technician	31	24	20	-35.48%
Emergency Medical Services Professions	130	130	143	10.00%
Tech Prep ¹	2	2	.	.
Engineering Design Graphics ¹	15	10	8	-46.67%
Architectural Specialty ¹	223	225	142	-36.32%
Electronic Graphics Specialty ¹	31	21	17	-45.16%
Interdisciplinary Specialty ¹	8	9	4	-50.00%
Mechanical Specialty ¹	43	32	24	-44.19%
Environmental Technology	19	21	27	42.11%
Financial Management and Mortgage Banking	38	27	41	7.89%
Fire Protection Technology	74	62	97	31.08%
Game Development				
Game & Visualization Programming Specialization	.	.	8	.
Game Art Specialization	.	.	8	.
Game Design Specialization	.	.	11	.
Heating, Air Conditioning, & Refrigeration Technology	40	49	62	55.00%
Hospitality Management	1	.	2	100.00%
Baccalaureate Prep Specialization	9	8	15	66.67%
Food & Lodging Specialization	13	8	8	-38.46%
Hotel & Lodging Specialization	22	13	13	-40.91%
Hotel Specialization ¹	.	3	3	.
Meeting and Event Planning Specialization	23	22	30	30.43%
Restaurant Specialization ¹	.	1	1	.
Travel & Tourism	6	10	17	183.33%
Human Services				
Addictions Counseling	57	40	68	19.30%
General Human Services	89	81	82	-7.87%
Interpreter Preparation Program	59	74	103	74.58%
Therapeutic Recreation	20	19	18	-10.00%
International Business	19	46	80	321.05%
Jewelry	15	18	27	80.00%
Land Surveying Technology/Geomatics	17	25	24	41.18%
Legal Assistant ¹	155	146	114	-26.45%
Management	306	296	325	6.21%
Administrative Specialist ¹	1	2	1	0.00%

¹ Program is no longer active, but students already in the pipeline may be allowed to complete the degree plan.

NOTE: A "." means that the program did not exist that semester.

Source: Fall 12th Class Day Data

**Declared Majors
Fall 2006 - 2008**

Associate of Applied Science (AAS) (continued)

	Fall 2006	Fall 2007	Fall 2008	06-08 % chg
Marketing	234	232	240	2.56%
Fashion Merchandising	108	109	96	-11.11%
Medical Laboratory Technology	72	82	77	6.94%
Nursing				
Nursing Mobility Track	40	76	135	237.50%
Nursing Traditional Track	476	921	2,391	402.31%
Occupational Therapy Assistant	45	53	68	51.11%
Office Administration	17	15	11	-35.29%
Administrative Assistant	35	34	54	54.29%
Legal Administrative Assistant	19	19	20	5.26%
Medical Administrative Assistant	42	39	47	11.90%
Paralegal	.	.	49	.
Personal Fitness Trainer	16	19	43	168.75%
Photographic Technology				
Advertising-Fashion Focus	61	57	70	14.75%
People-Portrait Focus	61	53	62	1.64%
Photography & Graphic Arts ¹	1	1	1	0.00%
Professional Photography ¹	5	5	3	-40.00%
Physical Fitness Technician ¹	3	12	6	100.00%
Physical Therapist Assistant	212	191	211	-0.47%
Printing & Desktop Publishing Production ¹	16	13	.	.
Quality Assurance Management & Technology ¹	.	2	.	.
Radiology ¹	388	406	427	10.05%
Real Estate	96	115	111	15.63%
Sonography				
Diagnostic Cardiac Sonography	25	30	54	116.00%
Diagnostic Medical Sonography	72	95	209	190.28%
Surgical Technology	81	74	93	14.81%
Undeclared	305	342	223	-26.89%
Visual Communication Design	61	47	30	-50.82%
2D Animation Specialization	25	25	38	52.00%
3D Animation Specialization	111	112	133	19.82%
3D Modeling Specialization	.	.	9	.
Graphic Arts Technology Specialization	.	6	25	.
Graphic Design Specialization	128	146	217	69.53%
Interactive Design Specialization	23	32	40	73.91%
Welding Technology	.	2	6	.
Art Metals	40	28	28	-30.00%
Code Welding	36	32	35	-2.78%
Code Welding-US Navy - Tech Prep ¹	4	2	3	-25.00%
TOTAL	7,168	7,754	10,313	43.88%

¹ Program is no longer active, but students already in the pipeline may be allowed to complete the degree plan.

NOTE: A "." means that the program did not exist that semester.

Source: Fall 12th Class Day Data

Declared Majors Fall 2006 - 2008

Certificates

	Fall 2006	Fall 2007	Fall 2008	06-08 % chg
Accounting				
Accounting Clerk	103	119	141	36.89%
Professional Accountant	39	55	82	110.26%
Architectural and Engineering Computer Aided Design				
Architectural and Engineering CAD	2	14	65	3150.00%
Civil CAD Specialization	.	.	4	.
Integrated Circuit Layout & Design Specialization	1	4	23	2200.00%
Auto Body Collision and Refinishing				
Auto Body Collision Repair	.	.	5	.
Auto Body Refinishing	.	.	1	.
Automotive Technology				
Automotive Drive Train Specialist	8	6	3	-62.50%
Automotive Engine Performance Specialist	24	29	38	58.33%
Automotive Heating & Air Conditioning	13	8	9	-30.77%
Automotive Technician	87	85	123	41.38%
Automotive Technology Advanced Skills Certificate ¹	0	1	5	.
Automotive Technology Enhanced Skills Certificate	8	9	12	50.00%
Brake & Suspension	6	3	7	16.67%
Marine Engine Repair	5	4	6	20.00%
Motorcycle Repair	16	14	13	-18.75%
Small Engine Repair	1	5	8	700.00%
Biotechnology	29	42	38	31.03%
Building Construction Technology	0	1	1	.
Cabinetry & Interior Finishes ¹	3	3	3	0.00%
Carpentry	38	24	29	-23.68%
Construction Manager	12	24	33	175.00%
Enhanced Skills Certificate ¹	0	2	0	.
Woodworking	16	17	17	6.25%
Business and Technical Communications				
Business & Government Communications	203	312	341	67.98%
Technical Communications	103	149	135	31.07%
Business Management ¹	0	1	0	.
Child Development	250	336	306	22.40%
Enhanced Skills	25	35	23	-8.00%
Computer Information Technology				
Computer Information Technology Database	67	77	78	16.42%
Computer Programming-C++ Track	47	43	45	-4.26%
Computer Programming-Java Track	25	30	36	44.00%
Local Area Network Systems Network Administration	25	19	21	-16.00%
Web Developer Specialist	27	46	34	25.93%

¹ Program is no longer active, but students already in the pipeline may be allowed to complete the degree plan.

NOTE: A "." means that the program did not exist that semester.

Source: Fall 12th Class Day Data

**Declared Majors
Fall 2006 - 2008**

Certificates (continued)

	<u>Fall 2006</u>	<u>Fall 2007</u>	<u>Fall 2008</u>	<u>06-08 % chg</u>
Criminal Justice - Texas Peace Officer Sequence	125	157	142	13.60%
Culinary Arts	50	70	70	40.00%
Culinarian	10	11	20	100.00%
Diagnostic Medical Imaging				
Advanced Technical Certificate	8	7	3	-62.50%
Diagnostic Cardiac Sonography	0	1	0	.
Vascular Technology Enhanced Skills Certificate	0	2	2	.
Digital Publishing & Graphics Technology ¹				
Desktop Publishing ¹	2	4	0	-100.00%
Printing Production ¹	3	1	0	-100.00%
Printing Prepress & Production ¹	0	1	1	.
Electronics and Advanced Technologies				
Automation, Robotics and Controls Technology	7	9	9	28.57%
Computer Electronics/Telecommunications	20	24	32	60.00%
Electronic Technology ¹	0	1	0	.
Engineering Technology	57	97	95	66.67%
Power Technology	1	3	8	700.00%
Renewable Energy Specialization	.	.	1	.
Semiconductor Manufacturing Technology Specialist Technician	11 22	10 24	9 22	-18.18% 0.00%
Emergency Medical Services				
EMT Intermediate Certificate	13	22	22	69.23%
EMT Paramedic Certificate	29	36	34	17.24%
Engineering Design Graphics ¹	50	47	26	-48.00%
Integrated Circuit Layout & Design Specialist ¹	4	8	3	-25.00%
Environmental Science and Technology	1	0	7	600.00%
Financial Management and Mortgage Banking	5	0	0	-100.00%
Financial Management ¹	0	1	0	.
Mortgage Banking	0	10	7	.
Fire Protection	55	76	67	21.82%
Game Development				
Game Art	.	.	1	.
Heating, Air Conditioning & Refrigeration	63	47	53	-15.87%
Hospitality Management	26	33	31	19.23%
Meeting Planning	20	14	12	-40.00%
Travel & Tourism	18	29	33	83.33%

¹ Program is no longer active, but students already in the pipeline may be allowed to complete the degree plan.

NOTE: A "." means that the program did not exist that semester.

Source: Fall 12th Class Day Data

**Declared Majors
Fall 2006 - 2008**

Certificates (continued)

	Fall 2006	Fall 2007	Fall 2008	06-08 % chg
Human Services	2	1	2	0.00%
Addictions Counseling	26	36	44	69.23%
Addictions Counseling in the Criminal Justice System	.	0	6	.
American Sign Language Studies	38	57	55	44.74%
Interpreter Preparation Program	19	24	29	52.63%
Therapeutic Recreation	14	27	25	78.57%
International Business	78	55	66	-15.38%
Jewelry	22	23	32	45.45%
Land Surveying Technology/Geomatics	10	7	9	-10.00%
Management	9	4	4	-55.56%
Administrative Management	83	106	121	45.78%
International Business ¹	.	7	6	.
Legal Assistant	68	66	72	5.88%
Management Specialties Leadership	13	18	27	107.69%
Small Business Management	86	87	68	-20.93%
Marketing	1	1	1	0.00%
Basic Skills	96	128	112	16.67%
Enhanced Skills Certificate	26	30	22	-15.38%
Fashion Merchandising	54	53	41	-24.07%
Medical Coding Specialist	45	67	62	37.78%
Nursing (Vocational)	463	494	511	10.37%
Office Administration				
Administrative Assistant	32	34	28	-12.50%
Enhanced Skills	0	0	1	.
Legal Administrative Assistant Specialization	12	17	18	50.00%
Medical Administrative Assistant Specialization	19	14	4	-78.95%
Medical Office Assistant Specialization	28	36	41	46.43%
Office Assistant	16	21	27	68.75%
Software Applications Specialist	3	6	3	0.00%
Paralegal	0	0	2	.
Personal Fitness Technology ¹	44	38	52	18.18%
Pharmacy Technician	93	120	120	29.03%
Photographic Technology				
Digital Assistant	0	1	2	.
Photographic Artist	73	80	63	-13.70%
Photographic Assistant ¹	10	5	3	-70.00%
Photojournalism ¹	15	33	36	140.00%

¹ Program is no longer active, but students already in the pipeline may be allowed to complete the degree plan.

NOTE: A "." means that the program did not exist that semester.

Source: Fall 12th Class Day Data

**Declared Majors
Fall 2006 - 2008**

Certificates (continued)

	Fall 2006	Fall 2007	Fall 2008	06-08 % chg
Physical Fitness Technology ¹	3	3	4	33.33%
Quality Management & Technology Certificate	1	0	0	.
Radiology				
Cardiovascular Interventional Radiology ¹	12	10	18	50.00%
Computerized Tomography ¹	2	2	1	-50.00%
Magnetic Resonance Imaging ¹	1	3	2	100.00%
Radio-Television-Film				
Film/Production Video	37	63	73	97.30%
Film/Video Production Management	14	15	15	7.14%
Industrial Video ¹	0	5	5	.
Industrial Video Production Management ¹	0	4	1	.
Real Estate	143	146	128	-10.49%
Surgical Technology	24	27	34	41.67%
Undeclared	917	1,334	1,224	33.48%
Visual Communication Design				
2D Animation	10	20	21	110.00%
3D Animation	27	37	33	22.22%
3D Modeling	.	.	1	.
Applied Multimedia Technology ¹	11	15	6	-45.45%
Graphic Arts Technology	.	.	15	.
Graphic Design	53	70	94	77.36%
Illustration	.	.	1	.
Interactive Design	7	12	8	14.29%
Prepress ¹	21	19	3	-85.71%
Web Specialization	12	18	14	16.67%
Welding Technology	1	2	2	100.00%
Art Metals	20	26	20	0.00%
Inspection	9	18	15	66.67%
Jewelry Fabrication ¹	0	2	1	.
Metal Sculpture	16	16	16	0.00%
Pipe Welding	11	8	9	-18.18%
Plate Welding	16	13	20	25.00%
Ultrahigh Purity Piping	1	1	1	0.00%
TOTAL	4,650	5,847	5,895	26.77%

¹ Program is no longer active, but students already in the pipeline may be allowed to complete the degree plan.

NOTE: A "." means that the program did not exist that semester.

Source: Fall 12th Class Day Data

**Declared Majors
Fall 2006 - 2008**

Other

	Fall 2006	Fall 2007	Fall 2008	06-08 % chg
No Major Data	128	0	0	.
Pre-Nursing Mobility Track Prerequisites	144	122	22	-84.72%
Pre-Nursing Traditional Track Prerequisites	1,450	983	160	-88.97%
Pre-Sonography Prerequisites	140	82	14	-90.00%
Undeclared	853	733	263	-69.17%
Intend to Transfer	2,503	1,921	999	-60.09%
Major Not Offered	322	327	285	-11.49%
Non-Degree Seeking	303	274	226	-25.41%
Taking Courses for Self Improvement	390	335	322	-17.44%
TOTAL	6,233	4,777	2,291	-63.24%

**Declared Majors Summary
Fall 2006 - 2008**

	Fall 2006	Fall 2007	Fall 2008	06-08 % chg
Associates of Arts	8,491	8,200	9,130	7.53%
Associates of Arts in Teaching	417	884	1,284	207.91%
Associates of Science	6,080	6,046	6,885	13.24%
Associates of Applied Science	7,168	7,754	10,313	43.88%
Certificates	4,650	5,847	5,895	26.77%
Other	6,233	4,777	2,291	-63.24%
TOTAL	33,039	33,508	35,798	8.35%

**High School Concurrent Enrollment by School District
Fall 2004 - 2008**

School District	Headcount					04-08
	Fall 2004	Fall 2005	Fall 2006	Fall 2007	Fall 2008	% Chg
Austin ISD	237	368	469	396	439	85.23%
Bastrop ISD	23	53	68	67	99	330.43%
Blanco ISD	8	26	22	15	21	162.50%
Del Valle ISD	39	1	24	18	43	10.26%
Dripping Springs ISD	46	69	42	51	92	100.00%
Eanes ISD	48	36	36	22	21	-56.25%
Elgin ISD	14	9	17	17	44	214.29%
Fredericksburg ISD	36	32	34	36	49	36.11%
Georgetown ISD	105	140	146	129	158	50.48%
Harper ISD	24	28	31	32	20	-16.67%
Hays CISD	44	65	78	95	122	177.27%
Jarrell ISD	16	43	34	18	34	112.50%
Johnson City ISD	14	14	12	14	14	0.00%
Lago Vista ISD	15	21	30	35	8	-46.67%
Lake Travis ISD	98	61	86	79	79	-19.39%
Leander ISD	95	165	200	285	288	203.16%
Liberty Hill ISD	46	72	89	97	96	108.70%
Lockhart ISD	53	123	126	140	157	196.23%
Luling ISD	20	45	29	40	48	140.00%
Manor ISD	16	19	20	37	44	175.00%
Nixon-Smiley ISD	14	18	18	29	17	21.43%
Pflugerville ISD	61	58	65	53	121	98.36%
Prairie Lea ISD	1	1	1	4	1	0.00%
Round Rock ISD	146	113	99	167	194	32.88%
San Marcos CISD	33	24	46	62	51	54.55%
Smithville ISD	-	5	5	5	4	-
Wimberley ISD	17	20	22	97	45	164.71%
Other ¹	231	269	361	376	441	90.91%
TOTAL	1,500	1,898	2,210	2,416	2,750	83.33%

¹ Other includes home-schooled students, students enrolled in private schools, and students with no high school identified.

NOTES: Concurrently enrolled students are enrolled in high school (as juniors and seniors) and in college. These students receive college credit and may receive high school graduation credit for the classes they take at ACC.

Source: Fall 12th Class Day Data

**Student Characteristics
First-Time in College Students
Fall 2005 - 2008**

	Fall 2005		Fall 2006		Fall 2007		Fall 2008		05-08 % chg
Student Headcount	3,880		4,565		4,283		4,859		25.23%
Residency									
In-District	2,595	66.9%	2,954	64.7%	2,736	63.9%	3,438	70.8%	32.49%
Out-of-District	1,134	29.2%	1,427	31.3%	1,373	32.1%	1,228	25.3%	8.29%
Out-of-State/International	116	3.0%	147	3.2%	121	2.8%	127	2.6%	9.48%
Other/Unknown ¹	35	0.9%	37	0.8%	53	1.2%	66	1.4%	88.57%
Gender									
Male	1,975	50.9%	2,263	49.6%	2,088	48.8%	2,463	50.7%	24.71%
Female	1,905	49.1%	2,302	50.4%	2,195	51.2%	2,396	49.3%	25.77%
Ethnicity									
White	2,104	54.2%	2,352	51.5%	2,335	54.5%	2,581	53.1%	22.67%
Black	339	8.7%	412	9.0%	410	9.6%	416	8.6%	22.71%
Hispanic	1,169	30.1%	1,451	31.8%	1,219	28.5%	1,504	31.0%	28.66%
Asian/Pacific Islander	132	3.4%	162	3.5%	185	4.3%	243	5.0%	84.09%
Am. Indian/Alaskan Native	36	0.9%	47	1.0%	48	1.1%	46	0.9%	27.78%
Non-Resident Alien	61	1.6%	67	1.5%	48	1.1%	27	0.6%	-55.74%
Other/Unknown	39	1.0%	74	1.6%	38	0.9%	42	0.9%	7.69%
Age									
16 and Under	9	0.2%	14	0.3%	15	0.4%	9	0.2%	0.00%
17	147	3.8%	161	3.5%	165	3.9%	143	2.9%	-2.72%
18	1,915	49.4%	2,142	46.9%	2,138	49.9%	2,376	48.9%	24.07%
19-21	1,049	27.0%	1,240	27.2%	1,111	25.9%	1,249	25.7%	19.07%
22-24	292	7.5%	341	7.5%	294	6.9%	338	7.0%	15.75%
25-30	257	6.6%	339	7.4%	293	6.8%	375	7.7%	45.91%
31-35	94	2.4%	143	3.1%	95	2.2%	162	3.3%	72.34%
36-50	98	2.5%	165	3.6%	147	3.4%	176	3.6%	79.59%
51-64	17	0.4%	18	0.4%	20	0.5%	30	0.6%	76.47%
65 and Over	2	0.1%	2	0.0%	2	0.0%	1	0.0%	-50.00%
Unknown	0	0.0%	0	0.0%	3	0.1%	0	0.0%	.
Average Age	20.49	.	20.88	.	20.62	.	20.95	.	2.24%

¹ Other includes students with tuition exemptions and waivers.

NOTE: First-time in college students have never attended college or any other postsecondary institution and are not reported as first-time-entering college until they have completed their high school work.

Source: Fall 12th Class Day Data

**Student Characteristics
Developmental Education - Reading
Fall 2006 - 2008**

	Fall 2006		Fall 2007		Fall 2008		06-08 % Chg
Student Headcount	1,101		1,064		1,124		2.09%
Residency							
In-District	789	71.66%	716	67.29%	835	74.29%	5.83%
Out-of-District	259	23.52%	306	28.76%	270	24.02%	4.25%
Out-of-State/International	37	3.36%	32	3.01%	17	1.51%	-54.05%
Other/Unknown ¹	16	1.45%	10	0.94%	2	0.18%	-87.50%
Gender							
Male	457	41.51%	427	40.13%	447	39.77%	-2.19%
Female	644	58.49%	637	59.87%	677	60.23%	5.12%
Student Status							
Part-time	1,043	94.73%	999	93.89%	1,067	94.93%	2.30%
Full-time ²	58	5.27%	65	6.11%	57	5.07%	-1.72%
Ethnicity							
White	321	29.16%	312	29.32%	349	31.05%	8.72%
Black	218	19.80%	226	21.24%	223	19.84%	2.29%
Hispanic	457	41.51%	425	39.94%	467	41.55%	2.19%
Asian/Pacific Islander	51	4.63%	56	5.26%	50	4.45%	-1.96%
Am. Indian/Alaskan Native	6	0.54%	11	1.03%	9	0.80%	50.00%
Non-Resident Alien	27	2.45%	15	1.41%	5	0.44%	-81.48%
Other/Unknown	21	1.91%	19	1.79%	21	1.87%	0.00%
Age							
16 and Under	3	0.27%	2	0.19%	3	0.27%	0.00%
17	26	2.36%	24	2.26%	36	3.20%	38.46%
18	366	33.24%	383	36.00%	412	36.65%	12.57%
19-21	400	36.33%	383	36.00%	386	34.34%	-3.50%
22-24	110	9.99%	98	9.21%	98	8.72%	-10.91%
25-30	103	9.36%	77	7.24%	87	7.74%	-15.53%
31-35	35	3.18%	37	3.48%	41	3.65%	17.14%
36-50	52	4.72%	53	4.98%	53	4.72%	1.92%
51-64	5	0.45%	6	0.56%	8	0.71%	60.00%
65 and Over	1	0.09%	1	0.09%	0	0.00%	-100.00%
Unknown	0	0.00%	0	0.00%	0	0.00%	.
Average Age	21.63	.	21.57	.	21.48	.	-0.69%

¹ Other includes students with tuition exemptions and waivers.

² Full-time - 12 credit hours or more.

NOTE: Unduplicated headcount of students who were enrolled in at least one Developmental Reading course.

Source: Fall 12th Class Day Data

**Student Characteristics
Developmental Education - Writing
Fall 2006 - 2008**

	Fall 2006		Fall 2007		Fall 2008		06-08 % Chg
Student Headcount	673		667		704		4.61%
Residency							
In-District	500	74.29%	464	69.57%	544	77.27%	8.80%
Out-of-District	146	21.69%	182	27.29%	149	21.16%	2.05%
Out-of-State/International	17	2.53%	18	2.70%	10	1.42%	-41.18%
Other/Unknown ¹	10	1.49%	3	0.45%	1	0.14%	-90.00%
Gender							
Male	335	49.78%	331	49.63%	344	48.86%	2.69%
Female	338	50.22%	336	50.37%	360	51.14%	6.51%
Student Status							
Part-time	606	90.04%	602	90.25%	652	92.61%	7.59%
Full-time ²	67	9.96%	65	9.75%	52	7.39%	-22.39%
Ethnicity							
White	203	30.16%	220	32.98%	228	32.39%	12.32%
Black	117	17.38%	131	19.64%	153	21.73%	30.77%
Hispanic	291	43.24%	250	37.48%	291	41.34%	0.00%
Asian/Pacific Islander	28	4.16%	32	4.80%	26	3.69%	-7.14%
Am. Indian/Alaskan Native	4	0.59%	6	0.90%	1	0.14%	-75.00%
Non-Resident Alien	14	2.08%	12	1.80%	2	0.28%	-85.71%
Other/Unknown	16	2.38%	16	2.40%	3	0.43%	-81.25%
Age							
16 and Under	1	0.15%	1	0.15%	0	0.00%	-100.00%
17	10	1.49%	10	1.50%	15	2.13%	50.00%
18	197	29.27%	191	28.64%	194	27.56%	-1.52%
19-21	237	35.22%	237	35.53%	256	36.36%	8.02%
22-24	83	12.33%	76	11.39%	72	10.23%	-13.25%
25-30	64	9.51%	54	8.10%	55	7.81%	-14.06%
31-35	26	3.86%	33	4.95%	35	4.97%	34.62%
36-50	47	6.98%	51	7.65%	62	8.81%	31.91%
51-64	8	1.19%	11	1.65%	15	2.13%	87.50%
65 and Over	0	0.00%	2	0.30%	0	0.00%	.
Unknown	1	0.15%	1	0.15%	0	0.00%	-100.00%
Average Age	22.67	.	23.22	.	23.40	.	3.22%

¹ Other includes students with tuition exemptions and waivers.

² Full-time - 12 credit hours or more.

NOTE: Unduplicated headcount of students who were enrolled in at least one Developmental Writing course.

Source: Fall 12th Class Day Data

**Student Characteristics
Developmental Education - Math
Fall 2006 - 2008**

	Fall 2006		Fall 2007		Fall 2008		06-08 % Chg
Student Headcount	6,765		6,690		7,109		5.08%
Residency							
In-District	4,760	70.36%	4,632	69.24%	5,400	75.96%	13.45%
Out-of-District	1,771	26.18%	1,854	27.71%	1,518	21.35%	-14.29%
Out-of-State/International	204	3.02%	169	2.53%	145	2.04%	-28.92%
Other/Unknown ¹	30	0.44%	35	0.52%	46	0.65%	53.33%
Gender							
Male	2,816	41.63%	2,718	40.63%	2,973	41.82%	5.58%
Female	3,949	58.37%	3,972	59.37%	4,136	58.18%	4.74%
Student Status							
Part-time	4,571	67.57%	4,539	67.85%	4,980	70.05%	8.95%
Full-time ²	2,194	32.43%	2,151	32.15%	2,129	29.95%	-2.96%
Ethnicity							
White	3,334	49.28%	3,375	50.45%	3,495	49.16%	4.83%
Black	770	11.38%	817	12.21%	892	12.55%	15.84%
Hispanic	2,231	32.98%	2,081	31.11%	2,293	32.25%	2.78%
Asian/Pacific Islander	176	2.60%	220	3.29%	222	3.12%	26.14%
Am. Indian/Alaskan Native	72	1.06%	61	0.91%	72	1.01%	0.00%
Non-Resident Alien	90	1.33%	65	0.97%	43	0.60%	-52.22%
Other/Unknown	92	1.36%	71	1.06%	92	1.29%	0.00%
Age							
16 and Under	13	0.19%	6	0.09%	4	0.06%	-69.23%
17	85	1.26%	108	1.61%	82	1.15%	-3.53%
18	1,149	16.98%	1,225	18.31%	1,279	17.99%	11.31%
19-21	2,435	35.99%	2,345	35.05%	2,462	34.63%	1.11%
22-24	970	14.34%	975	14.57%	986	13.87%	1.65%
25-30	1,107	16.36%	1,012	15.13%	1,141	16.05%	3.07%
31-35	421	6.22%	427	6.38%	492	6.92%	16.86%
36-50	519	7.67%	532	7.95%	561	7.89%	8.09%
51-64	64	0.95%	51	0.76%	99	1.39%	54.69%
65 and Over	2	0.03%	7	0.10%	3	0.04%	50.00%
Unknown	0	0.00%	2	0.03%	0	0.00%	.
Average Age	23.85	.	23.82	.	24.11	.	1.09%

¹ Other includes students with tuition exemptions and waivers.

² Full-time - 12 credit hours or more.

NOTE: Unduplicated headcount of students who were enrolled in at least one Developmental Math course.

Source: Fall 12th Class Day Data

**Student Characteristics
Developmental Education - Other¹
Fall 2006 - 2008**

	Fall 2006		Fall 2007		Fall 2008		06-08 % Chg
Student Headcount	1,160		1,291		1,303		12.33%
Residency							
In-District	852	73.45%	893	69.17%	963	73.91%	13.03%
Out-of-District	257	22.16%	340	26.34%	316	24.25%	22.96%
Out-of-State/International	36	3.10%	35	2.71%	15	1.15%	-58.33%
Other/Unknown ²	15	1.29%	23	1.78%	9	0.69%	-40.00%
Gender							
Male	511	44.05%	548	42.45%	587	45.05%	14.87%
Female	649	55.95%	743	57.55%	716	54.95%	10.32%
Student Status							
Part-time	959	82.67%	1,064	82.42%	1,073	82.35%	11.89%
Full-time ³	201	17.33%	227	17.58%	230	17.65%	14.43%
Ethnicity							
White	456	39.31%	472	36.56%	512	39.29%	12.28%
Black	184	15.86%	223	17.27%	215	16.50%	16.85%
Hispanic	435	37.50%	483	37.41%	495	37.99%	13.79%
Asian/Pacific Islander	38	3.28%	45	3.49%	41	3.15%	7.89%
Am. Indian/Alaskan Native	7	0.60%	17	1.32%	10	0.77%	42.86%
Non-Resident Alien	24	2.07%	25	1.94%	10	0.77%	-58.33%
Other/Unknown	16	1.38%	26	2.01%	20	1.53%	25.00%
Age							
16 and Under	1	0.09%	1	0.08%	1	0.08%	0.00%
17	21	1.81%	28	2.17%	35	2.69%	66.67%
18	327	28.19%	382	29.59%	396	30.39%	21.10%
19-21	439	37.84%	487	37.72%	462	35.46%	5.24%
22-24	137	11.81%	150	11.62%	129	9.90%	-5.84%
25-30	126	10.86%	126	9.76%	140	10.74%	11.11%
31-35	46	3.97%	41	3.18%	68	5.22%	47.83%
36-50	58	5.00%	66	5.11%	57	4.37%	-1.72%
51-64	5	0.43%	9	0.70%	15	1.15%	200.00%
65 and Over	0	0.00%	1	0.08%	0	0.00%	.
Unknown	0	0.00%	0	0.00%	0	0.00%	.
Average Age	22.06	.	22.03	.	22.15	.	0.41%

¹ Other includes human development and study skills.

² Other includes students with tuition exemptions and waivers.

³ Full-time - 12 credit hours or more.

NOTE: Unduplicated headcount of students who were enrolled in at least one Developmental Other¹ course.

Source: Fall 12th Class Day Data

THIS PAGE INTENTIONALLY LEFT BLANK