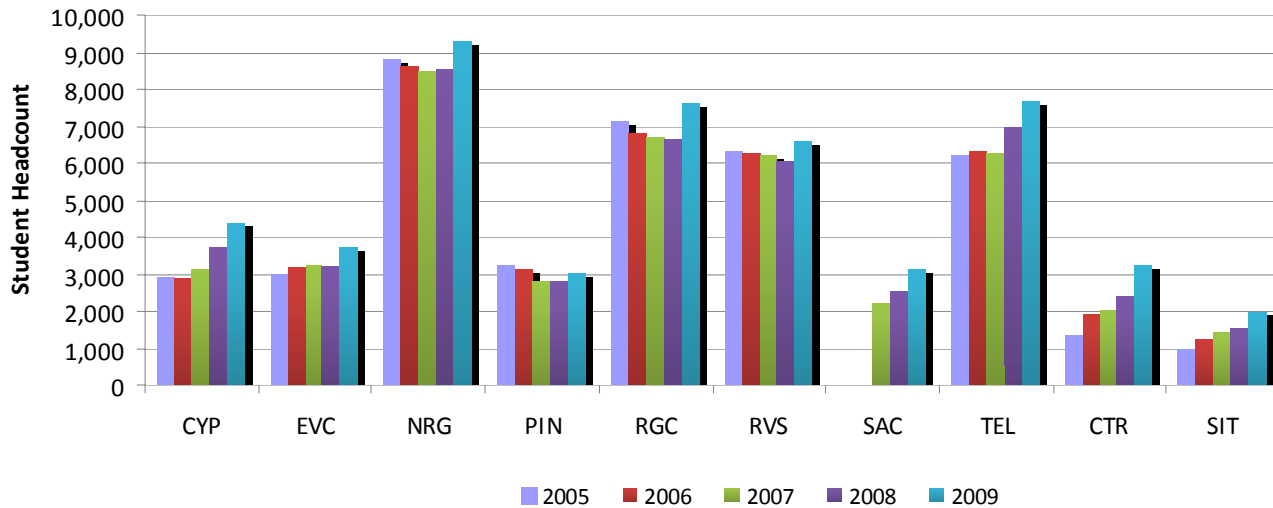


### Student Headcount by Location Spring 2009

Location	Spring 2005	Spring 2006	Spring 2007	Spring 2008	Spring 2009
<b>Cypress Creek</b>	2,932	2,904	3,155	3,703	4,401
<b>Eastview</b>	2,977	3,169	3,233	3,230	3,740
<b>Northridge</b>	8,799	8,595	8,506	8,557	9,272
<b>Pinnacle</b>	3,241	3,147	2,785	2,792	3,051
<b>Rio Grande</b>	7,148	6,836	6,709	6,671	7,616
<b>Riverside</b>	6,305	6,270	6,194	6,056	6,584
<b>South Austin<sup>1</sup></b>	.	.	2,215	2,544	3,152
<b>Telecommunicated Instruction Centers</b>	6,196	6,320	6,268	6,981	7,657
<b>Site-Based Instruction</b>	996	1,233	1,444	1,551	2,014



<sup>1</sup> The South Austin Campus opened in Fall 2006

NOTE: Students who attend multiple locations are counted once at each location.

Source: Spring 12th Class Day Data

**Student Headcount  
Cypress Creek Campus  
Spring 2005 - 2009**

	Spring 2005	Spring 2006	Spring 2007	Spring 2008	Spring 2009	05-09 % chg
<b>Student Headcount</b>	<b>2,932</b>	<b>2,904</b>	<b>3,155</b>	<b>3,703</b>	<b>4,401</b>	<b>50.10%</b>
<b>Credit Hours</b>	17,108	17,040	18,727	22,390	25,408	48.52%
<b>Average Credit Hours</b>	5.83	5.87	5.94	6.05	5.77	-1.06%
<b>Contact Hours</b>	306,616	309,336	338,664	417,440	474,632	54.80%
<b>Average Contact Hours</b>	104.58	106.52	107.34	112.73	107.85	3.13%
<b>Full-time Student Equivalent (FTSE)<sup>1</sup></b>	1,141	1,136	1,248	1,493	1,694	48.52%
<b>Residency</b>						
In-District	1,892 64.53%	2,103 72.42%	2,241 71.03%	2,546 68.76%	3,743 85.05%	97.83%
Out-of-District	958 32.67%	705 24.28%	832 26.37%	1,056 28.52%	561 12.75%	-41.44%
Out-of-State/International	66 2.25%	76 2.62%	65 2.06%	76 2.05%	63 1.43%	-4.55%
Other <sup>2</sup>	16 0.55%	20 0.69%	17 0.54%	25 0.68%	34 0.77%	112.50%
<b>Gender</b>						
Male	1,153 39.32%	1,217 41.91%	1,275 40.41%	1,479 39.94%	1,807 41.06%	56.72%
Female	1,779 60.68%	1,687 58.09%	1,880 59.59%	2,224 60.06%	2,594 58.94%	45.81%
<b>Status</b>						
Part-time	2,007 68.45%	1,980 68.18%	2,142 67.89%	2,516 67.94%	3,097 70.37%	54.31%
Full-time <sup>3</sup>	925 31.55%	924 31.82%	1,013 32.11%	1,187 32.06%	1,304 29.63%	40.97%
<b>Ethnicity</b>						
White	2,042 69.65%	1,983 68.29%	2,120 67.19%	2,399 64.79%	2,868 65.17%	40.45%
Black	164 5.59%	150 5.17%	190 6.02%	226 6.10%	246 5.59%	50.00%
Hispanic	483 16.47%	504 17.36%	576 18.26%	677 18.28%	841 19.11%	74.12%
Asian/Pacific Islander	136 4.64%	142 4.89%	145 4.60%	259 6.99%	291 6.61%	113.97%
Am. Indian/Alaskan Native	27 0.92%	39 1.34%	28 0.89%	32 0.86%	39 0.89%	44.44%
Non-Resident Alien	40 1.36%	48 1.65%	49 1.55%	49 1.32%	50 1.14%	25.00%
Other/Unknown	40 1.36%	38 1.31%	47 1.49%	61 1.65%	66 1.50%	65.00%
<b>Age</b>						
16 and Under	28 0.95%	37 1.27%	48 1.52%	48 1.30%	58 1.32%	107.14%
17	90 3.07%	112 3.86%	112 3.55%	128 3.46%	140 3.18%	55.56%
18	309 10.54%	300 10.33%	370 11.73%	426 11.50%	449 10.20%	45.31%
19-21	998 34.04%	1,006 34.64%	1,057 33.50%	1,231 33.24%	1,447 32.88%	44.99%
22-24	403 13.74%	451 15.53%	450 14.26%	516 13.93%	644 14.63%	59.80%
25-30	485 16.54%	436 15.01%	488 15.47%	593 16.01%	754 17.13%	55.46%
31-35	232 7.91%	242 8.33%	254 8.05%	263 7.10%	337 7.66%	45.26%
36-50	352 12.01%	286 9.85%	327 10.36%	430 11.61%	502 11.41%	42.61%
51-64	32 1.09%	32 1.10%	45 1.43%	60 1.62%	63 1.43%	96.88%
65 and Over	3 0.10%	2 0.07%	4 0.13%	8 0.22%	7 0.16%	133.33%
Average Age	25.20	24.67	24.83	25.15	25.23	0.12%

<sup>1</sup> Full-time Student Equivalent (FTSE) is based on 15 SCH.

<sup>2</sup> Other includes students with tuition exemptions and waivers.

<sup>3</sup> Full-time - 12 credit hours or more.

NOTES: Students who attend multiple locations are counted once at each location. Percents may not add to 100 due to rounding.

Source: Spring 12th Class Day Data

**Student Headcount  
Eastview Campus  
Spring 2005 - 2009**

	Spring 2005	Spring 2006	Spring 2007	Spring 2008	Spring 2009	05-09 % chg
<b>Student Headcount</b>	<b>2,977</b>	<b>3,169</b>	<b>3,233</b>	<b>3,230</b>	<b>3,740</b>	<b>25.63%</b>
<b>Credit Hours</b>	16,304	17,922	18,359	18,030	20,250	24.20%
<b>Average Credit Hours</b>	5.48	5.66	5.68	5.58	5.41	-1.14%
<b>Contact Hours</b>	422,888	460,448	467,952	460,368	512,206	21.12%
<b>Average Contact Hours</b>	142.05	145.30	144.74	142.53	136.95	-3.59%
<b>Full-time Student Equivalent (FTSE)<sup>1</sup></b>	1,087	1,195	1,224	1,202	1,350	24.20%
<b>Residency</b>						
In-District	2,352 79.01%	2,526 79.71%	2,535 78.41%	2,575 79.72%	3,126 83.58%	32.91%
Out-of-District	558 18.74%	564 17.80%	620 19.18%	583 18.05%	497 13.29%	-10.93%
Out-of-State/International	35 1.18%	47 1.48%	43 1.33%	31 0.96%	49 1.31%	40.00%
Other <sup>2</sup>	32 1.07%	32 1.01%	35 1.08%	41 1.27%	68 1.82%	112.50%
<b>Gender</b>						
Male	902 30.30%	912 28.78%	1,038 32.11%	980 30.34%	1,178 31.50%	30.60%
Female	2,075 69.70%	2,257 71.22%	2,195 67.89%	2,250 69.66%	2,562 68.50%	23.47%
<b>Status</b>						
Part-time	2,195 73.73%	2,251 71.03%	2,356 72.87%	2,410 74.61%	2,796 74.76%	27.38%
Full-time <sup>3</sup>	782 26.27%	918 28.97%	877 27.13%	820 25.39%	944 25.24%	20.72%
<b>Ethnicity</b>						
White	1,286 43.20%	1,383 43.64%	1,451 44.88%	1,441 44.61%	1,585 42.38%	23.25%
Black	549 18.44%	586 18.49%	569 17.60%	555 17.18%	713 19.06%	29.87%
Hispanic	853 28.65%	882 27.83%	915 28.30%	943 29.20%	1,080 28.88%	26.61%
Asian/Pacific Islander	137 4.60%	156 4.92%	134 4.14%	151 4.67%	202 5.40%	47.45%
Am. Indian/Alaskan Native	21 0.71%	17 0.54%	24 0.74%	17 0.53%	26 0.70%	23.81%
Non-Resident Alien	77 2.59%	91 2.87%	87 2.69%	67 2.07%	71 1.90%	-7.79%
Other/Unknown	54 1.81%	54 1.70%	53 1.64%	56 1.73%	63 1.68%	16.67%
<b>Age</b>						
16 and Under	4 0.13%	1 0.03%	5 0.15%	3 0.09%	1 0.03%	-75.00%
17	12 0.40%	20 0.63%	13 0.40%	20 0.62%	16 0.43%	33.33%
18	113 3.80%	134 4.23%	152 4.70%	150 4.64%	190 5.08%	68.14%
19-21	659 22.14%	772 24.36%	761 23.54%	743 23.00%	875 23.40%	32.78%
22-24	530 17.80%	509 16.06%	556 17.20%	555 17.18%	612 16.36%	15.47%
25-30	704 23.65%	736 23.22%	744 23.01%	741 22.94%	924 24.71%	31.25%
31-35	380 12.76%	359 11.33%	387 11.97%	363 11.24%	385 10.29%	1.32%
36-50	511 17.16%	547 17.26%	527 16.30%	546 16.90%	597 15.96%	16.83%
51-64	60 2.02%	88 2.78%	85 2.63%	106 3.28%	136 3.64%	126.67%
65 and Over	4 0.13%	3 0.09%	3 0.09%	3 0.09%	4 0.11%	0.00%
Average Age	28.30	28.24	28.07	28.35	28.26	-0.14%

<sup>1</sup> Full-time Student Equivalent (FTSE) is based on 15 SCH.  
<sup>2</sup> Other includes students with tuition exemptions and waivers.  
<sup>3</sup> Full-time - 12 credit hours or more.

NOTES: Students who attend multiple locations are counted once at each location. Percents may not add to 100 due to rounding.

Source: Spring 12th Class Day Data

### Student Headcount Northridge Campus Spring 2005 - 2009

	Spring 2005	Spring 2006	Spring 2007	Spring 2008	Spring 2009	05-09 % chg
<b>Student Headcount</b>	<b>8,799</b>	<b>8,595</b>	<b>8,506</b>	<b>8,557</b>	<b>9,272</b>	<b>5.38%</b>
<b>Credit Hours</b>	55,322	54,855	53,919	54,472	57,868	4.60%
<b>Average Credit Hours</b>	6.29	6.38	6.34	6.37	6.24	-0.73%
<b>Contact Hours</b>	1,072,720	1,059,904	1,044,904	1,067,504	1,138,720	6.15%
<b>Average Contact Hours</b>	121.91	123.32	122.84	124.75	122.81	0.74%
<b>Full-time Student Equivalent (FTSE)<sup>1</sup></b>	3,688	3,657	3,595	3,631	3,858	4.60%
<b>Residency</b>						
In-District	5,833 66.29%	6,177 71.87%	5,981 70.32%	6,039 70.57%	7,599 81.96%	30.28%
Out-of-District	2,649 30.11%	2,097 24.40%	2,208 25.96%	2,261 26.42%	1,379 14.87%	-47.94%
Out-of-State/International	173 1.97%	201 2.34%	199 2.34%	141 1.65%	143 1.54%	-17.34%
Other <sup>2</sup>	144 1.64%	120 1.40%	118 1.39%	116 1.36%	151 1.63%	4.86%
<b>Gender</b>						
Male	4,226 48.03%	4,093 47.62%	4,077 47.93%	4,166 48.69%	4,539 48.95%	7.41%
Female	4,573 51.97%	4,502 52.38%	4,429 52.07%	4,391 51.31%	4,733 51.05%	3.50%
<b>Status</b>						
Part-time	6,035 68.59%	5,855 68.12%	5,769 67.82%	5,754 67.24%	6,346 68.44%	5.15%
Full-time <sup>3</sup>	2,764 31.41%	2,740 31.88%	2,737 32.18%	2,803 32.76%	2,926 31.56%	5.86%
<b>Ethnicity</b>						
White	5,106 58.03%	4,952 57.61%	4,834 56.83%	4,819 56.32%	5,098 54.98%	-0.16%
Black	756 8.59%	755 8.78%	776 9.12%	757 8.85%	951 10.26%	25.79%
Hispanic	1,845 20.97%	1,836 21.36%	1,816 21.35%	1,880 21.97%	2,062 22.24%	11.76%
Asian/Pacific Islander	612 6.96%	596 6.93%	651 7.65%	744 8.69%	827 8.92%	35.13%
Am. Indian/Alaskan Native	75 0.85%	74 0.86%	78 0.92%	74 0.86%	81 0.87%	8.00%
Non-Resident Alien	266 3.02%	256 2.98%	216 2.54%	166 1.94%	134 1.45%	-49.62%
Other/Unknown	139 1.58%	126 1.47%	135 1.59%	117 1.37%	119 1.28%	-14.39%
<b>Age</b>						
16 and Under	58 0.66%	50 0.58%	65 0.76%	62 0.72%	67 0.72%	15.52%
17	166 1.89%	152 1.77%	146 1.72%	142 1.66%	184 1.98%	10.84%
18	608 6.91%	631 7.34%	646 7.59%	681 7.96%	665 7.17%	9.38%
19-21	2,685 30.51%	2,551 29.68%	2,581 30.34%	2,687 31.40%	2,889 31.16%	7.60%
22-24	1,645 18.70%	1,621 18.86%	1,519 17.86%	1,548 18.09%	1,665 17.96%	1.22%
25-30	1,814 20.62%	1,811 21.07%	1,796 21.11%	1,727 20.18%	1,869 20.16%	3.03%
31-35	741 8.42%	684 7.96%	674 7.92%	638 7.46%	741 7.99%	0.00%
36-50	894 10.16%	908 10.56%	889 10.45%	880 10.28%	944 10.18%	5.59%
51-64	164 1.86%	167 1.94%	168 1.98%	167 1.95%	220 2.37%	34.15%
65 and Over	24 0.27%	20 0.23%	22 0.26%	25 0.29%	28 0.30%	16.67%
Average Age	25.80	25.87	25.79	25.65	25.87	0.27%

<sup>1</sup> Full-time Student Equivalent (FTSE) is based on 15 SCH.  
<sup>2</sup> Other includes students with tuition exemptions and waivers.  
<sup>3</sup> Full-time - 12 credit hours or more.

NOTES: Students who attend multiple locations are counted once at each location. Percents may not add to 100 due to rounding.

Source: Spring 12th Class Day Data

**Student Headcount  
Pinnacle Campus  
Spring 2005 - 2009**

	Spring 2005	Spring 2006	Spring 2007	Spring 2008	Spring 2009	05-09 % chg
<b>Student Headcount</b>	<b>3,241</b>	<b>3,147</b>	<b>2,785</b>	<b>2,792</b>	<b>3,051</b>	<b>-5.86%</b>
<b>Credit Hours</b>	19,847	19,435	16,563	16,705	18,077	-8.92%
<b>Average Credit Hours</b>	6.12	6.18	5.95	5.98	5.92	-3.25%
<b>Contact Hours</b>	365,472	357,672	304,000	302,720	327,776	-10.31%
<b>Average Contact Hours</b>	112.77	113.65	109.16	108.42	107.43	-4.73%
<b>Full-time Student Equivalent (FTSE)<sup>1</sup></b>	1,323	1,296	1,104	1,114	1,205	-8.92%
<b>Residency</b>						
In-District	2,397 73.96%	2,443 77.63%	2,107 75.66%	2,128 76.22%	2,274 74.53%	-5.13%
Out-of-District	766 23.63%	625 19.86%	596 21.40%	608 21.78%	711 23.30%	-7.18%
Out-of-State/International	50 1.54%	66 2.10%	68 2.44%	37 1.33%	45 1.47%	-10.00%
Other <sup>2</sup>	28 0.86%	13 0.41%	14 0.50%	19 0.68%	21 0.69%	-25.00%
<b>Gender</b>						
Male	1,437 44.34%	1,392 44.23%	1,259 45.21%	1,265 45.31%	1,403 45.98%	-2.37%
Female	1,804 55.66%	1,755 55.77%	1,526 54.79%	1,527 54.69%	1,648 54.02%	-8.65%
<b>Status</b>						
Part-time	2,149 66.31%	2,099 66.70%	1,860 66.79%	1,817 65.08%	2,019 66.18%	-6.05%
Full-time <sup>3</sup>	1,092 33.69%	1,048 33.30%	925 33.21%	975 34.92%	1,032 33.82%	-5.49%
<b>Ethnicity</b>						
White	2,186 67.45%	2,078 66.03%	1,830 65.71%	1,873 67.08%	2,020 66.21%	-7.59%
Black	81 2.50%	102 3.24%	111 3.99%	92 3.30%	113 3.70%	39.51%
Hispanic	721 22.25%	736 23.39%	649 23.30%	623 22.31%	719 23.57%	-0.28%
Asian/Pacific Islander	107 3.30%	97 3.08%	88 3.16%	106 3.80%	116 3.80%	8.41%
Am. Indian/Alaskan Native	32 0.99%	30 0.95%	25 0.90%	24 0.86%	21 0.69%	-34.38%
Non-Resident Alien	49 1.51%	53 1.68%	43 1.54%	34 1.22%	25 0.82%	-48.98%
Other/Unknown	65 2.01%	51 1.62%	39 1.40%	40 1.43%	37 1.21%	-43.08%
<b>Age</b>						
16 and Under	24 0.74%	28 0.89%	47 1.69%	42 1.50%	38 1.25%	58.33%
17	102 3.15%	88 2.80%	88 3.16%	114 4.08%	94 3.08%	-7.84%
18	357 11.02%	313 9.95%	290 10.41%	306 10.96%	359 11.77%	0.56%
19-21	1,223 37.74%	1,181 37.53%	1,018 36.55%	1,108 39.68%	1,132 37.10%	-7.44%
22-24	558 17.22%	582 18.49%	520 18.67%	446 15.97%	512 16.78%	-8.24%
25-30	487 15.03%	465 14.78%	432 15.51%	425 15.22%	490 16.06%	0.62%
31-35	180 5.55%	196 6.23%	152 5.46%	126 4.51%	169 5.54%	-6.11%
36-50	263 8.11%	244 7.75%	181 6.50%	185 6.63%	206 6.75%	-21.67%
51-64	41 1.27%	46 1.46%	52 1.87%	38 1.36%	47 1.54%	14.63%
65 and Over	6 0.19%	4 0.13%	5 0.18%	2 0.07%	4 0.13%	-33.33%
Average Age	24.10	24.20	24.04	23.58	23.90	-0.83%

<sup>1</sup> Full-time Student Equivalent (FTSE) is based on 15 SCH.  
<sup>2</sup> Other includes students with tuition exemptions and waivers.  
<sup>3</sup> Full-time - 12 credit hours or more.

NOTES: Students who attend multiple locations are counted once at each location. Percents may not add to 100 due to rounding.

Source: Spring 12th Class Day Data

**Student Headcount  
Rio Grande Campus  
Spring 2005 - 2009**

	Spring 2005	Spring 2006	Spring 2007	Spring 2008	Spring 2009	05-09 % chg
<b>Student Headcount</b>	<b>7,148</b>	<b>6,836</b>	<b>6,709</b>	<b>6,671</b>	<b>7,616</b>	<b>6.55%</b>
<b>Credit Hours</b>	43,664	42,241	41,212	41,108	47,088	7.84%
<b>Average Credit Hours</b>	6.11	6.18	6.14	6.16	6.18	1.21%
<b>Contact Hours</b>	827,584	801,256	786,784	781,272	885,440	6.99%
<b>Average Contact Hours</b>	115.78	117.21	117.27	117.11	116.26	0.42%
<b>Full-time Student Equivalent (FTSE)<sup>1</sup></b>	2,911	2,816	2,747	2,741	3,139	7.84%
<b>Residency</b>						
In-District	5,729 80.15%	5,604 81.98%	5,427 80.89%	5,440 81.55%	6,395 83.97%	11.63%
Out-of-District	1,079 15.10%	923 13.50%	954 14.22%	920 13.79%	865 11.36%	-19.83%
Out-of-State/International	163 2.28%	153 2.24%	178 2.65%	139 2.08%	161 2.11%	-1.23%
Other <sup>2</sup>	177 2.48%	156 2.28%	150 2.24%	172 2.58%	195 2.56%	10.17%
<b>Gender</b>						
Male	3,238 45.30%	3,098 45.32%	3,092 46.09%	3,145 47.14%	3,633 47.70%	12.20%
Female	3,910 54.70%	3,738 54.68%	3,617 53.91%	3,526 52.86%	3,983 52.30%	1.87%
<b>Status</b>						
Part-time	4,633 64.82%	4,408 64.48%	4,357 64.94%	4,247 63.66%	4,949 64.98%	6.82%
Full-time <sup>3</sup>	2,515 35.18%	2,428 35.52%	2,352 35.06%	2,424 36.34%	2,667 35.02%	6.04%
<b>Ethnicity</b>						
White	4,452 62.28%	4,179 61.13%	4,129 61.54%	4,113 61.65%	4,642 60.95%	4.27%
Black	415 5.81%	407 5.95%	410 6.11%	404 6.06%	511 6.71%	23.13%
Hispanic	1,480 20.71%	1,503 21.99%	1,439 21.45%	1,401 21.00%	1,666 21.88%	12.57%
Asian/Pacific Islander	350 4.90%	359 5.25%	404 6.02%	435 6.52%	483 6.34%	38.00%
Am. Indian/Alaskan Native	67 0.94%	52 0.76%	62 0.92%	77 1.15%	76 1.00%	13.43%
Non-Resident Alien	259 3.62%	225 3.29%	178 2.65%	153 2.29%	129 1.69%	-50.19%
Other/Unknown	125 1.75%	111 1.62%	87 1.30%	88 1.32%	109 1.43%	-12.80%
<b>Age</b>						
16 and Under	30 0.42%	28 0.41%	31 0.46%	34 0.51%	25 0.33%	-16.67%
17	90 1.26%	74 1.08%	99 1.48%	92 1.38%	118 1.55%	31.11%
18	392 5.48%	411 6.01%	399 5.95%	389 5.83%	436 5.72%	11.22%
19-21	2,425 33.93%	2,272 33.24%	2,319 34.57%	2,358 35.35%	2,500 32.83%	3.09%
22-24	1,487 20.80%	1,436 21.01%	1,288 19.20%	1,294 19.40%	1,499 19.68%	0.81%
25-30	1,433 20.05%	1,372 20.07%	1,337 19.93%	1,358 20.36%	1,571 20.63%	9.63%
31-35	539 7.54%	486 7.11%	506 7.54%	462 6.93%	568 7.46%	5.38%
36-50	594 8.31%	610 8.92%	594 8.85%	535 8.02%	704 9.24%	18.52%
51-64	147 2.06%	129 1.89%	118 1.76%	136 2.04%	180 2.36%	22.45%
65 and Over	11 0.15%	18 0.26%	18 0.27%	13 0.19%	15 0.20%	36.36%
Average Age	25.40	25.48	25.39	25.21	25.68	1.10%

<sup>1</sup> Full-time Student Equivalent (FTSE) is based on 15 SCH.

<sup>2</sup> Other includes students with tuition exemptions and waivers.

<sup>3</sup> Full-time - 12 credit hours or more.

NOTES: Students who attend multiple locations are counted once at each location. Percents may not add to 100 due to rounding.

Source: Spring 12th Class Day Data

**Student Headcount  
Riverside Campus  
Spring 2005 - 2009**

	Spring 2005	Spring 2006	Spring 2007	Spring 2008	Spring 2009	05-09 % chg
<b>Student Headcount</b>	<b>6,305</b>	<b>6,270</b>	<b>6,194</b>	<b>6,056</b>	<b>6,584</b>	<b>4.43%</b>
<b>Credit Hours</b>	38,528	39,108	38,752	36,704	40,050	3.95%
<b>Average Credit Hours</b>	6.11	6.24	6.26	6.06	6.08	-0.45%
<b>Contact Hours</b>	751,928	761,376	757,984	722,560	787,376	4.71%
<b>Average Contact Hours</b>	119.26	121.43	122.37	119.31	119.59	0.28%
<b>Full-time Student Equivalent (FTSE)<sup>1</sup></b>	2,569	2,607	2,583	2,447	2,670	3.95%
<b>Residency</b>						
In-District	4,868 77.21%	4,964 79.17%	4,785 77.25%	4,722 77.97%	5,219 79.27%	7.21%
Out-of-District	1,219 19.33%	1,091 17.40%	1,185 19.13%	1,174 19.39%	1,147 17.42%	-5.91%
Out-of-State/International	101 1.60%	114 1.82%	122 1.97%	71 1.17%	100 1.52%	-0.99%
Other <sup>2</sup>	117 1.86%	101 1.61%	102 1.65%	89 1.47%	118 1.79%	0.85%
<b>Gender</b>						
Male	2,934 46.53%	2,940 46.89%	3,076 49.66%	2,960 48.88%	3,364 51.09%	14.66%
Female	3,371 53.47%	3,330 53.11%	3,118 50.34%	3,096 51.12%	3,220 48.91%	-4.48%
<b>Status</b>						
Part-time	4,232 67.12%	4,186 66.76%	4,063 65.60%	3,991 65.90%	4,408 66.95%	4.16%
Full-time <sup>3</sup>	2,073 32.88%	2,084 33.24%	2,131 34.40%	2,065 34.10%	2,176 33.05%	4.97%
<b>Ethnicity</b>						
White	3,227 51.18%	3,165 50.48%	3,026 48.85%	2,927 48.33%	3,106 47.17%	-3.75%
Black	558 8.85%	606 9.67%	587 9.48%	544 8.98%	639 9.71%	14.52%
Hispanic	1,926 30.55%	1,923 30.67%	2,038 32.90%	2,015 33.27%	2,235 33.95%	16.04%
Asian/Pacific Islander	270 4.28%	246 3.92%	248 4.00%	296 4.89%	337 5.12%	24.81%
Am. Indian/Alaskan Native	45 0.71%	48 0.77%	45 0.73%	64 1.06%	66 1.00%	46.67%
Non-Resident Alien	167 2.65%	170 2.71%	160 2.58%	109 1.80%	102 1.55%	-38.92%
Other/Unknown	112 1.78%	112 1.79%	90 1.45%	101 1.67%	99 1.50%	-11.61%
<b>Age</b>						
16 and Under	18 0.29%	13 0.21%	15 0.24%	17 0.28%	27 0.41%	50.00%
17	70 1.11%	79 1.26%	79 1.28%	71 1.17%	53 0.80%	-24.29%
18	411 6.52%	435 6.94%	467 7.54%	434 7.17%	483 7.34%	17.52%
19-21	2,163 34.31%	2,256 35.98%	2,253 36.37%	2,221 36.67%	2,300 34.93%	6.33%
22-24	1,230 19.51%	1,176 18.76%	1,175 18.97%	1,137 18.77%	1,196 18.17%	-2.76%
25-30	1,141 18.10%	1,124 17.93%	1,072 17.31%	1,039 17.16%	1,198 18.20%	5.00%
31-35	486 7.71%	422 6.73%	404 6.52%	425 7.02%	475 7.21%	-2.26%
36-50	629 9.98%	630 10.05%	571 9.22%	558 9.21%	653 9.92%	3.82%
51-64	143 2.27%	122 1.95%	141 2.28%	139 2.30%	176 2.67%	23.08%
65 and Over	14 0.22%	13 0.21%	17 0.27%	15 0.25%	23 0.35%	64.29%
Average Age	25.70	25.43	25.29	25.36	25.76	0.23%

<sup>1</sup> Full-time Student Equivalent (FTSE) is based on 15 SCH.  
<sup>2</sup> Other includes students with tuition exemptions and waivers.  
<sup>3</sup> Full-time - 12 credit hours or more.

NOTES: Students who attend multiple locations are counted once at each location. Percents may not add to 100 due to rounding.

Source: Spring 12th Class Day Data

## Student Headcount South Austin Campus<sup>1</sup> Spring 2007 - 2009

	Spring 2007	Spring 2008	Spring 2009	07-09 % chg
<b>Student Headcount</b>	<b>2,215</b>	<b>2,544</b>	<b>3,152</b>	<b>42.30%</b>
<b>Credit Hours</b>	11,203	12,768	15,616	39.39%
<b>Average Credit Hours</b>	5.06	5.02	4.95	-2.05%
<b>Contact Hours</b>	212,608	241,032	293,624	38.11%
<b>Average Contact Hours</b>	95.99	94.75	93.15	-2.95%
<b>Full-time Student Equivalent (FTSE)<sup>2</sup></b>	747	851	1,041	39.39%
<b>Residency</b>				
In-District	1,783 80.50%	2,045 80.39%	2,560 81.22%	43.58%
Out-of-District	382 17.25%	443 17.41%	519 16.47%	35.86%
Out-of-State/International	36 1.63%	32 1.26%	41 1.30%	13.89%
Other <sup>3</sup>	14 0.63%	24 0.94%	32 1.02%	128.57%
<b>Gender</b>				
Male	933 42.12%	1,087 42.73%	1,336 42.39%	43.19%
Female	1,282 57.88%	1,457 57.27%	1,816 57.61%	41.65%
<b>Status</b>				
Part-time	1,493 67.40%	1,774 69.73%	2,247 71.29%	50.50%
Full-time <sup>4</sup>	722 32.60%	770 30.27%	905 28.71%	25.35%
<b>Ethnicity</b>				
White	1,136 51.29%	1,297 50.98%	1,594 50.57%	40.32%
Black	118 5.33%	164 6.45%	212 6.73%	79.66%
Hispanic	774 34.94%	892 35.06%	1,105 35.06%	42.76%
Asian/Pacific Islander	84 3.79%	97 3.81%	130 4.12%	54.76%
Am. Indian/Alaskan Native	23 1.04%	33 1.30%	24 0.76%	4.35%
Non-Resident Alien	43 1.94%	27 1.06%	40 1.27%	-6.98%
Other/Unknown	37 1.67%	34 1.34%	47 1.49%	27.03%
<b>Age</b>				
16 and Under	11 0.50%	39 1.53%	27 0.86%	145.45%
17	38 1.72%	50 1.97%	70 2.22%	84.21%
18	182 8.22%	199 7.82%	281 8.91%	54.40%
19-21	779 35.17%	892 35.06%	1,001 31.76%	28.50%
22-24	400 18.06%	454 17.85%	569 18.05%	42.25%
25-30	405 18.28%	449 17.65%	607 19.26%	49.88%
31-35	145 6.55%	169 6.64%	259 8.22%	78.62%
36-50	209 9.44%	239 9.39%	270 8.57%	29.19%
51-64	43 1.94%	49 1.93%	63 2.00%	46.51%
65 and Over	3 0.14%	4 0.16%	5 0.16%	66.67%
Average Age	25.13	25.02	25.27	0.56%

<sup>1</sup> The South Austin Campus opened Fall 2006.

<sup>2</sup> Full-time Student Equivalent (FTSE) is based on 15 SCH.

<sup>3</sup> Other includes students with tuition exemptions and waivers.

<sup>4</sup> Full-time - 12 credit hours or more.

NOTES: Students who attend multiple locations are counted once at each location. Percents may not add to 100 due to rounding.

Source: Spring 12th Class Day Data

## Student Headcount Telecommunicated Instruction<sup>1</sup> Spring 2005 - 2009

	Spring 2005	Spring 2006	Spring 2007	Spring 2008	Spring 2009	05-09 % chg
<b>Student Headcount</b>	<b>6,196</b>	<b>6,320</b>	<b>6,268</b>	<b>6,981</b>	<b>7,657</b>	<b>23.58%</b>
<b>Credit Hours</b>	28,388	28,820	29,191	32,891	35,831	26.22%
<b>Average Credit Hours</b>	4.58	4.56	4.66	4.71	4.68	2.14%
<b>Contact Hours</b>	498,288	503,200	517,880	594,000	629,760	26.38%
<b>Average Contact Hours</b>	80.42	79.62	82.62	85.09	82.25	2.27%
<b>Full-time Student Equivalent (FTSE)<sup>2</sup></b>	1,893	1,921	1,946	2,193	2,389	26.22%
<b>Residency</b>						
In-District	4,356 70.30%	4,606 72.88%	4,470 71.31%	4,979 71.32%	6,053 79.05%	38.96%
Out-of-District	1,634 26.37%	1,533 24.26%	1,629 25.99%	1,829 26.20%	1,429 18.66%	-12.55%
Out-of-State/International	114 1.84%	112 1.77%	95 1.52%	88 1.26%	98 1.28%	-14.04%
Other <sup>3</sup>	92 1.48%	69 1.09%	74 1.18%	85 1.22%	77 1.01%	-16.30%
<b>Gender</b>						
Male	2,112 34.09%	2,209 34.95%	2,128 33.95%	2,332 33.40%	2,709 35.38%	28.27%
Female	4,084 65.91%	4,111 65.05%	4,140 66.05%	4,649 66.60%	4,948 64.62%	21.16%
<b>Status</b>						
Part-time	4,370 70.53%	4,444 70.32%	4,525 72.19%	4,996 71.57%	5,515 72.03%	26.20%
Full-time <sup>4</sup>	1,826 29.47%	1,876 29.68%	1,743 27.81%	1,985 28.43%	2,142 27.97%	17.31%
<b>Ethnicity</b>						
White	3,994 64.46%	4,051 64.10%	3,968 63.31%	4,449 63.73%	4,760 62.17%	19.18%
Black	469 7.57%	523 8.28%	524 8.36%	589 8.44%	690 9.01%	47.12%
Hispanic	1,115 18.00%	1,150 18.20%	1,201 19.16%	1,327 19.01%	1,535 20.05%	37.67%
Asian/Pacific Islander	318 5.13%	327 5.17%	321 5.12%	370 5.30%	420 5.49%	32.08%
Am. Indian/Alaskan Native	67 1.08%	52 0.82%	62 0.99%	57 0.82%	77 1.01%	14.93%
Non-Resident Alien	146 2.36%	128 2.03%	119 1.90%	115 1.65%	89 1.16%	-39.04%
Other/Unknown	87 1.40%	89 1.41%	73 1.16%	74 1.06%	86 1.12%	-1.15%
<b>Age</b>						
16 and Under	36 0.58%	38 0.60%	48 0.77%	64 0.92%	93 1.21%	158.33%
17	121 1.95%	133 2.10%	124 1.98%	140 2.01%	173 2.26%	42.98%
18	213 3.44%	243 3.84%	196 3.13%	266 3.81%	274 3.58%	28.64%
19-21	1,605 25.90%	1,618 25.60%	1,487 23.72%	1,607 23.02%	1,715 22.40%	6.85%
22-24	1,188 19.17%	1,172 18.54%	1,164 18.57%	1,267 18.15%	1,402 18.31%	18.01%
25-30	1,402 22.63%	1,427 22.58%	1,501 23.95%	1,677 24.02%	1,794 23.43%	27.96%
31-35	708 11.43%	691 10.93%	702 11.20%	810 11.60%	908 11.86%	28.25%
36-50	793 12.80%	863 13.66%	920 14.68%	1,001 14.34%	1,111 14.51%	40.10%
51-64	124 2.00%	130 2.06%	119 1.90%	141 2.02%	183 2.39%	47.58%
65 and Over	6 0.10%	5 0.08%	7 0.11%	8 0.11%	4 0.05%	-33.33%
Average Age	27.00	27.07	27.39	27.38	27.50	1.85%

<sup>1</sup> Telecommunicated instruction includes courses offered in the following formats: Instructional Television, Personal Computer with Modem, Print-Based using a textbook, and Directed Learning. Prior to Fall 2006, Telecommunicated instruction also included courses offered in Interactive Video Class format.

<sup>2</sup> Full-time Student Equivalent (FTSE) is based on 15 SCH.

<sup>3</sup> Other includes students with tuition exemptions and waivers.

<sup>4</sup> Full-time - 12 credit hours or more.

NOTES: Students who attend multiple locations are counted once at each location. Percents may not add to 100 due to rounding

Source: Spring 12th Class Day Data

**Student Headcount  
Site-Based<sup>1</sup> Summary  
Spring 2005 - 2009**

	Spring 2005	Spring 2006	Spring 2007	Spring 2008	Spring 2009	05-09 % chg
<b>Student Headcount</b>	<b>996</b>	<b>1,233</b>	<b>1,444</b>	<b>1,551</b>	<b>2,014</b>	<b>102.21%</b>
<b>Credit Hours</b>	3,511	4,485	4,964	5,780	8,227	134.32%
<b>Average Credit Hours</b>	3.53	3.64	3.44	3.73	4.08	15.88%
<b>Contact Hours</b>	75,584	94,280	100,144	120,992	185,456	145.36%
<b>Average Contact Hours</b>	75.89	76.46	69.35	78.01	92.08	21.34%
<b>Full-time Student Equivalent (FTSE)<sup>2</sup></b>	234	299	331	385	548	134.32%
<b>Residency</b>						
In-District	543 54.52%	684 55.47%	882 61.08%	882 56.87%	1,293 64.20%	138.12%
Out-of-District	422 42.37%	516 41.85%	546 37.81%	651 41.97%	696 34.56%	64.93%
Out-of-State/International	24 2.41%	24 1.95%	8 0.55%	10 0.64%	11 0.55%	-54.17%
Other <sup>2</sup>	7 0.70%	9 0.73%	8 0.55%	8 0.52%	14 0.70%	100.00%
<b>Gender</b>						
Male	445 44.68%	569 46.15%	610 42.24%	703 45.33%	891 44.24%	100.22%
Female	551 55.32%	664 53.85%	834 57.76%	848 54.67%	1,123 55.76%	103.81%
<b>Status</b>						
Part-time	825 82.83%	1,091 88.48%	1,273 88.16%	1,368 88.20%	1,826 90.67%	121.33%
Full-time <sup>3</sup>	171 17.17%	142 11.52%	171 11.84%	183 11.80%	188 9.33%	9.94%
<b>Ethnicity</b>						
White	657 65.96%	838 67.96%	932 64.54%	1,013 65.31%	1,215 60.33%	84.93%
Black	65 6.53%	79 6.41%	110 7.62%	118 7.61%	139 6.90%	113.85%
Hispanic	201 20.18%	244 19.79%	306 21.19%	310 19.99%	466 23.14%	131.84%
Asian/Pacific Islander	33 3.31%	39 3.16%	53 3.67%	56 3.61%	115 5.71%	248.48%
Am. Indian/Alaskan Native	6 0.60%	7 0.57%	11 0.76%	17 1.10%	19 0.94%	216.67%
Non-Resident Alien	16 1.61%	11 0.89%	13 0.90%	17 1.10%	25 1.24%	56.25%
Other/Unknown	18 1.81%	15 1.22%	19 1.32%	20 1.29%	35 1.74%	94.44%
<b>Age</b>						
16 and Under	87 8.73%	126 10.22%	230 15.93%	195 12.57%	350 17.38%	302.30%
17	250 25.10%	295 23.93%	393 27.22%	533 34.36%	638 31.68%	155.20%
18	109 10.94%	193 15.65%	192 13.30%	251 16.18%	306 15.19%	180.73%
19-21	132 13.25%	130 10.54%	145 10.04%	141 9.09%	145 7.20%	9.85%
22-24	102 10.24%	121 9.81%	117 8.10%	104 6.71%	136 6.75%	33.33%
25-30	136 13.65%	158 12.81%	150 10.39%	138 8.90%	182 9.04%	33.82%
31-35	69 6.93%	78 6.33%	75 5.19%	50 3.22%	96 4.77%	39.13%
36-50	80 8.03%	114 9.25%	117 8.10%	102 6.58%	125 6.21%	56.25%
51-64	23 2.31%	17 1.38%	23 1.59%	27 1.74%	31 1.54%	34.78%
65 and Over	8 0.80%	1 0.08%	2 0.14%	10 0.64%	5 0.25%	-37.50%
Average Age	23.90	23.17	22.36	21.77	21.51	-10.00%

<sup>1</sup> Site-based instruction includes various credit and non-credit classes and training offered or provided to businesses, government entities, high schools, correctional institutions, and community groups.

<sup>2</sup> Full-time Student Equivalent (FTSE) is based on 15 SCH.

<sup>3</sup> Other includes students with tuition exemptions and waivers.

<sup>4</sup> Full-time - 12 credit hours or more.

Source: Spring 12th Class Day Data

**Student Headcount  
Centers<sup>1</sup> Summary  
Spring 2005 - 2009**

	Spring 2005	Spring 2006	Spring 2007	Spring 2008	Spring 2009	05-09 % chg
<b>Student Headcount<sup>2</sup></b>	<b>1,356</b>	<b>1,928</b>	<b>2,057</b>	<b>2,436</b>	<b>3,238</b>	<b>138.79%</b>
<b>Credit Hours</b>	6,093	9,166	10,225	12,046	15,999	162.58%
<b>Average Credit Hours</b>	4.49	4.75	4.97	4.94	4.94	9.96%
<b>Contact Hours</b>	104,528	155,248	175,832	203,912	271,744	159.97%
<b>Average Contact Hours</b>	77.09	80.52	85.48	83.71	83.92	8.87%
<b>Full-time Student Equivalent (FTSE)<sup>3</sup></b>	406	611	682	803	1,067	162.58%
<b>Residency</b>						
In-District	278 20.50%	418 21.68%	387 18.81%	492 20.20%	1,398 43.17%	402.88%
Out-of-District	1,061 78.24%	1,477 76.61%	1,638 79.63%	1,917 78.69%	1,793 55.37%	68.99%
Out-of-State/International	16 1.18%	26 1.35%	30 1.46%	21 0.86%	35 1.08%	118.75%
Other <sup>4</sup>	1 0.07%	7 0.36%	2 0.10%	6 0.25%	12 0.37%	1100.00%
<b>Gender</b>						
Male	482 35.55%	751 38.95%	792 38.50%	940 38.59%	1,280 39.53%	165.56%
Female	874 64.45%	1,177 61.05%	1,265 61.50%	1,496 61.41%	1,958 60.47%	124.03%
<b>Status</b>						
Part-time	1,121 82.67%	1,510 78.32%	1,565 76.08%	1,865 76.56%	2,440 75.36%	117.66%
Full-time <sup>5</sup>	235 17.33%	418 21.68%	492 23.92%	571 23.44%	798 24.64%	239.57%
<b>Ethnicity</b>						
White	921 67.92%	1,322 68.57%	1,332 64.75%	1,559 64.00%	2,061 63.65%	123.78%
Black	42 3.10%	68 3.53%	112 5.44%	151 6.20%	205 6.33%	388.10%
Hispanic	308 22.71%	438 22.72%	510 24.79%	605 24.84%	777 24.00%	152.27%
Asian/Pacific Islander	14 1.03%	36 1.87%	41 1.99%	49 2.01%	114 3.52%	714.29%
Am. Indian/Alaskan Native	8 0.59%	18 0.93%	26 1.26%	27 1.11%	35 1.08%	337.50%
Non-Resident Alien	5 0.37%	12 0.62%	13 0.63%	13 0.53%	17 0.53%	240.00%
Other/Unknown	58 4.28%	34 1.76%	23 1.12%	32 1.31%	29 0.90%	-50.00%
<b>Age</b>						
16 and Under	93 6.86%	104 5.39%	135 6.56%	162 6.65%	195 6.02%	109.68%
17	247 18.22%	279 14.47%	313 15.22%	421 17.28%	460 14.21%	86.23%
18	190 14.01%	283 14.68%	303 14.73%	366 15.02%	436 13.47%	129.47%
19-21	327 24.12%	523 27.13%	606 29.46%	627 25.74%	870 26.87%	166.06%
22-24	160 11.80%	219 11.36%	223 10.84%	238 9.77%	387 11.95%	141.88%
25-30	133 9.81%	220 11.41%	196 9.53%	249 10.22%	359 11.09%	169.92%
31-35	72 5.31%	92 4.77%	100 4.86%	114 4.68%	201 6.21%	179.17%
36-50	107 7.89%	190 9.85%	157 7.63%	237 9.73%	282 8.71%	163.55%
51-64	27 1.99%	17 0.88%	23 1.12%	21 0.86%	43 1.33%	59.26%
65 and Over	0 0.00%	1 0.05%	1 0.05%	1 0.04%	5 0.15%	.
Average Age	23.00	23.19	22.56	22.90	23.38	1.65%

<sup>1</sup> Centers include non-campus locations that are staffed, have regular posted hours, and offer credit courses every semester.

<sup>2</sup> Students that attend more than one center are counted only once in the Center Summary; therefore, this total is unduplicated and will not match the sum of all of the centers.

<sup>3</sup> Full-time Student Equivalent (FTSE) is based on 15 SCH.

<sup>4</sup> Other includes students with tuition exemptions and waivers.

<sup>5</sup> Full-time - 12 credit hours or more.

Source: Spring 12th Class Day Data

### Student Headcount Centers<sup>1</sup> by Location Spring 2009

	Bastrop	Fredericksburg	Georgetown	Hays	Leander
<b>Student Headcount</b>	<b>138</b>	<b>312</b>	<b>210</b>	<b>161</b>	<b>137</b>
<b>Credit Hours</b>	561	1,746	929	561	398
<b>Average Credit Hours</b>	4.07	5.60	4.42	3.48	2.91
<b>Contact Hours</b>	8,976	33,088	14,864	9,136	7,280
<b>Average Contact Hours</b>	65.04	106.05	70.78	56.75	53.14
<b>Full-time Student Equivalent (FTSE)<sup>2</sup></b>	37	116	62	37	27
<b>Residency</b>					
In-District	16 11.59%	18 5.77%	29 13.81%	27 16.77%	127 92.70%
Out-of-District	119 86.23%	291 93.27%	177 84.29%	132 81.99%	9 6.57%
Out-of-State/International	0 0.00%	3 0.96%	1 0.48%	2 1.24%	1 0.73%
Other <sup>3</sup>	3 2.17%	0 0.00%	3 1.43%	0 0.00%	0 0.00%
<b>Gender</b>					
Male	49 35.51%	97 31.09%	76 36.19%	65 40.37%	35 25.55%
Female	89 64.49%	215 68.91%	134 63.81%	96 59.63%	102 74.45%
<b>Ethnicity</b>					
White	91 65.94%	233 74.68%	167 79.52%	107 66.46%	95 69.34%
Black	8 5.80%	2 0.64%	5 2.38%	6 3.73%	8 5.84%
Hispanic	34 24.64%	68 21.79%	28 13.33%	45 27.95%	27 19.71%
Asian/Pacific Islander	2 1.45%	3 0.96%	5 2.38%	1 0.62%	3 2.19%
Am. Indian/Alaskan Native	0 0.00%	4 1.28%	2 0.95%	2 1.24%	1 0.73%
Non-Resident Alien	2 1.45%	0 0.00%	3 1.43%	0 0.00%	0 0.00%
Other/Unknown	1 0.72%	2 0.64%	0 0.00%	0 0.00%	3 2.19%
<b>Age</b>					
16 and Under	14 10.14%	31 9.94%	48 22.86%	10 6.21%	20 14.60%
17	45 32.61%	45 14.42%	73 34.76%	45 27.95%	46 33.58%
18	26 18.84%	34 10.90%	39 18.57%	24 14.91%	22 16.06%
19-21	21 15.22%	65 20.83%	17 8.10%	29 18.01%	10 7.30%
22-24	10 7.25%	33 10.58%	4 1.90%	18 11.18%	10 7.30%
25-30	8 5.80%	38 12.18%	8 3.81%	16 9.94%	9 6.57%
31-35	4 2.90%	19 6.09%	8 3.81%	5 3.11%	5 3.65%
36-50	7 5.07%	39 12.50%	9 4.29%	13 8.07%	14 10.22%
51-64	3 2.17%	8 2.56%	4 1.90%	1 0.62%	1 0.73%
65 and Over	0 0.00%	0 0.00%	0 0.00%	0 0.00%	0 0.00%
Average Age	21.13	24.41	20.07	22.19	21.80

<sup>1</sup> Centers include non-campus locations that are staffed, have regular posted hours, and offer credit courses every semester.

<sup>2</sup> Full-time Student Equivalent (FTSE) is based on 15 SCH.

<sup>3</sup> Other includes students with tuition exemptions and waivers.

NOTES: Students are counted once for each location they attend. Percents may not add to 100 due to rounding.

Source: Spring 12th Class Day Data

**Student Headcount  
Centers<sup>1</sup> by Location (continued)  
Spring 2009**

	Lockhart	Pflugerville	Round Rock Higher Education Center	San Marcos Center	San Marcos Goodnight
<b>Student Headcount</b>	<b>151</b>	<b>58</b>	<b>1,551</b>	<b>432</b>	<b>271</b>
<b>Credit Hours</b>	684	177	7,725	1,752	1,466
<b>Average Credit Hours</b>	4.53	3.05	4.98	4.06	5.41
<b>Contact Hours</b>	10,944	2,832	131,048	29,720	23,856
<b>Average Contact Hours</b>	72.48	48.83	84.49	68.80	88.03
<b>Full-time Student Equivalent (FTSE)<sup>2</sup></b>	46	12	515	117	98
<b>Residency</b>					
In-District	0 0.00%	6 10.34%	1,127 72.66%	42 9.72%	31 11.44%
Out-of-District	151 100.00%	51 87.93%	400 25.79%	383 88.66%	234 86.35%
Out-of-State/International	0 0.00%	1 1.72%	17 1.10%	7 1.62%	6 2.21%
Other <sup>3</sup>	0 0.00%	0 0.00%	7 0.45%	0 0.00%	0 0.00%
<b>Gender</b>					
Male	65 43.05%	24 41.38%	596 38.43%	216 50.00%	155 57.20%
Female	86 56.95%	34 58.62%	955 61.57%	216 50.00%	116 42.80%
<b>Ethnicity</b>					
White	92 60.93%	40 68.97%	924 59.57%	253 58.56%	171 63.10%
Black	9 5.96%	7 12.07%	138 8.90%	19 4.40%	9 3.32%
Hispanic	46 30.46%	8 13.79%	349 22.50%	147 34.03%	84 31.00%
Asian/Pacific Islander	2 1.32%	1 1.72%	96 6.19%	3 0.69%	0 0.00%
Am. Indian/Alaskan Native	1 0.66%	1 1.72%	17 1.10%	7 1.62%	2 0.74%
Non-Resident Alien	0 0.00%	0 0.00%	10 0.64%	1 0.23%	1 0.37%
Other/Unknown	1 0.66%	1 1.72%	17 1.10%	2 0.46%	4 1.48%
<b>Age</b>					
16 and Under	29 19.21%	8 13.79%	22 1.42%	12 2.78%	2 0.74%
17	81 53.64%	34 58.62%	54 3.48%	38 8.80%	3 1.11%
18	41 27.15%	13 22.41%	169 10.90%	54 12.50%	43 15.87%
19-21	0 0.00%	0 0.00%	507 32.69%	166 38.43%	144 53.14%
22-24	0 0.00%	0 0.00%	220 14.18%	79 18.29%	43 15.87%
25-30	0 0.00%	3 5.17%	228 14.70%	42 9.72%	24 8.86%
31-35	0 0.00%	0 0.00%	145 9.35%	19 4.40%	5 1.85%
36-50	0 0.00%	0 0.00%	179 11.54%	20 4.63%	5 1.85%
51-64	0 0.00%	0 0.00%	22 1.42%	2 0.46%	2 0.74%
65 and Over	0 0.00%	0 0.00%	5 0.32%	0 0.00%	0 0.00%
Average Age	17.07	17.64	25.35	22.33	21.51

<sup>1</sup> Centers include non-campus locations that are staffed, have regular posted hours, and offer credit courses every semester.

<sup>2</sup> Full-time Student Equivalent (FTSE) is based on 15 SCH.

<sup>3</sup> Other includes students with tuition exemptions and waivers.

NOTES: Students are counted once for each location they attend. Percents may not add to 100 due to rounding.

Source: Spring 12th Class Day Data

THIS PAGE INTENTIONALLY LEFT BLANK