

**Student Characteristics
District-wide
Fall 2005 - 2009**

	Fall 2005	Fall 2006	Fall 2007	Fall 2008	Fall 2009	05-09 % chg
Student Headcount	31,908	33,039	33,508	35,798	40,248	26.14%
Credit Hours	253,569	262,355	267,284	281,149	319,408	25.96%
Average Credit Hours	7.90	7.90	8.00	7.85	7.94	0.46%
Contact Hours	4,832,704	5,016,656	5,123,072	5,386,376	6,107,714	26.38%
Average Contact Hours	151.50	151.80	152.90	150.47	151.75	0.17%
Full-time Student Equivalent (FTSE)¹	16,905	17,490	17,819	18,743	21,294	25.96%
Residency						
In-District	23,266 72.92%	23,533 71.23%	23,542 70.26%	27,221 76.04%	31,075 77.21%	33.56%
Out-of-District	7,719 24.19%	8,502 25.73%	9,081 27.10%	7,702 21.52%	8,173 20.31%	5.88%
Out-of-State/International	575 1.80%	689 2.09%	573 1.71%	496 1.39%	622 1.55%	8.17%
Other/Unknown ²	348 1.09%	315 0.95%	312 0.93%	379 1.06%	378 0.94%	8.62%
Gender						
Male	13,831 43.35%	14,498 43.88%	14,434 43.08%	15,486 43.26%	17,672 43.91%	27.77%
Female	18,077 56.65%	18,541 56.12%	19,074 56.92%	20,312 56.74%	22,576 56.09%	24.89%
Student Status						
Part-time	23,063 72.28%	23,821 72.10%	24,276 72.45%	26,470 73.94%	29,433 73.13%	27.62%
Full-time ³	8,818 27.64%	9,218 27.90%	9,232 27.55%	9,328 26.06%	10,815 26.87%	22.65%
Ethnicity						
White	19,097 59.85%	19,467 58.92%	19,810 59.12%	20,754 57.98%	23,043 57.25%	20.66%
Black	2,383 7.47%	2,557 7.74%	2,689 8.02%	2,978 8.32%	3,543 8.80%	48.68%
Hispanic	7,456 23.37%	8,014 24.26%	7,897 23.57%	8,846 24.71%	10,065 25.01%	34.99%
Asian/Pacific Islander	1,596 5.00%	1,598 4.84%	1,780 5.31%	2,029 5.67%	2,222 5.52%	39.22%
Am. Indian/Alaskan Native	231 0.72%	294 0.89%	293 0.87%	306 0.85%	349 0.87%	51.08%
Non-Resident Alien	652 2.04%	661 2.00%	558 1.67%	441 1.23%	422 1.05%	-35.28%
Other/Unknown	493 1.55%	448 1.36%	481 1.44%	444 1.24%	604 1.50%	22.52%
Age						
16 and Under	620 1.94%	844 2.55%	859 2.56%	1,075 3.00%	1,226 3.05%	97.74%
17	1,382 4.33%	1,415 4.28%	1,655 4.94%	1,742 4.87%	1,914 4.76%	38.49%
18	2,840 8.90%	3,104 9.39%	3,197 9.54%	3,489 9.75%	3,604 8.95%	26.90%
19-21	9,300 29.15%	9,586 29.01%	9,809 29.27%	10,147 28.35%	10,800 26.83%	16.13%
22-24	5,428 17.01%	5,370 16.25%	5,273 15.74%	5,492 15.34%	6,252 15.53%	15.18%
25-30	5,636 17.66%	5,907 17.88%	5,861 17.49%	6,311 17.63%	7,385 18.35%	31.03%
31-35	2,518 7.89%	2,533 7.67%	2,489 7.43%	2,787 7.79%	3,363 8.36%	33.56%
36-50	3,444 10.79%	3,501 10.60%	3,558 10.62%	3,845 10.74%	4,594 11.41%	33.39%
51-64	673 2.11%	703 2.13%	715 2.13%	839 2.34%	1,020 2.53%	51.56%
65 and over	67 0.21%	76 0.23%	85 0.25%	71 0.20%	87 0.22%	29.85%
Unknown	0 0.00%	0 0.00%	7 0.02%	0 0.00%	3 0.01%	.
Average Age	25.50	25.40	25.30	25.40	25.80	1.18%

¹ Full-time Student Equivalent (FTSE) is based on 15 SCH.

² Other/Unknown includes students with tuition exemptions and waivers.

³ Full-time - 12 credit hours or more.

NOTE: Percents may not add to 100 due to rounding.

Source: Fall 12th Class Day Data

**Student Characteristics
Full-Time Student Equivalent (FTSE)¹
Fall 2009**

	Fall 2007		Fall 2008		Fall 2009		07-09 % chg
Total Students	17,819		18,790		21,294		19.50%
Student Status							
Part-time	9,783	54.90%	10,688	56.88%	11,934	56.04%	21.99%
Full-time ²	8,036	45.10%	8,102	43.12%	9,360	43.96%	16.48%
Residency							
In-District	12,637	70.92%	14,389	76.58%	16,534	77.65%	30.84%
Out-of-District	4,614	25.89%	3,826	20.36%	4,082	19.17%	-11.53%
Out-of-State/International	328	1.84%	282	1.50%	375	1.76%	14.33%
Other/Unknown ³	241	1.35%	294	1.56%	302	1.42%	25.31%
Gender							
Male	8,046	45.15%	8,541	45.46%	9,829	46.16%	22.16%
Female	9,773	54.85%	10,249	54.54%	11,465	53.84%	17.31%
Ethnicity							
White	10,672	59.89%	11,022	58.66%	12,322	57.87%	15.46%
Black	1,369	7.68%	1,488	7.92%	1,808	8.49%	32.07%
Hispanic	4,084	22.92%	4,516	24.03%	5,237	24.59%	28.23%
Asian/Pacific Islander	949	5.33%	1,102	5.86%	1,195	5.61%	25.92%
Am. Indian/Alaskan Native	162	0.91%	167	0.89%	189	0.89%	16.67%
Non-Resident Alien	334	1.87%	262	1.39%	250	1.17%	-25.15%
Other/Unknown	249	1.40%	233	1.24%	294	1.38%	18.07%
Age							
16 and Under	255	1.43%	308	1.64%	365	1.71%	43.14%
17	571	3.20%	580	3.09%	634	2.98%	11.03%
18	2,129	11.95%	2,299	12.24%	2,403	11.28%	12.87%
19-21	6,127	34.38%	6,313	33.60%	6,679	31.37%	9.01%
22-24	2,852	16.01%	2,948	15.69%	3,369	15.82%	18.13%
25-30	2,952	16.57%	3,141	16.72%	3,794	17.82%	28.52%
31-35	1,141	6.40%	1,287	6.85%	1,600	7.51%	40.23%
36-50	1,499	8.41%	1,579	8.40%	2,027	9.52%	35.22%
51-64	267	1.50%	316	1.68%	397	1.86%	48.69%
65 and over	24	0.13%	19	0.10%	25	0.12%	4.17%
Unknown	2	0.01%	0	0.00%	1	0.00%	-50.00%

¹ Full-time Student Equivalent (FTSE) is based on 15 SCH.

² Other/Unknown includes students with tuition exemptions and waivers.

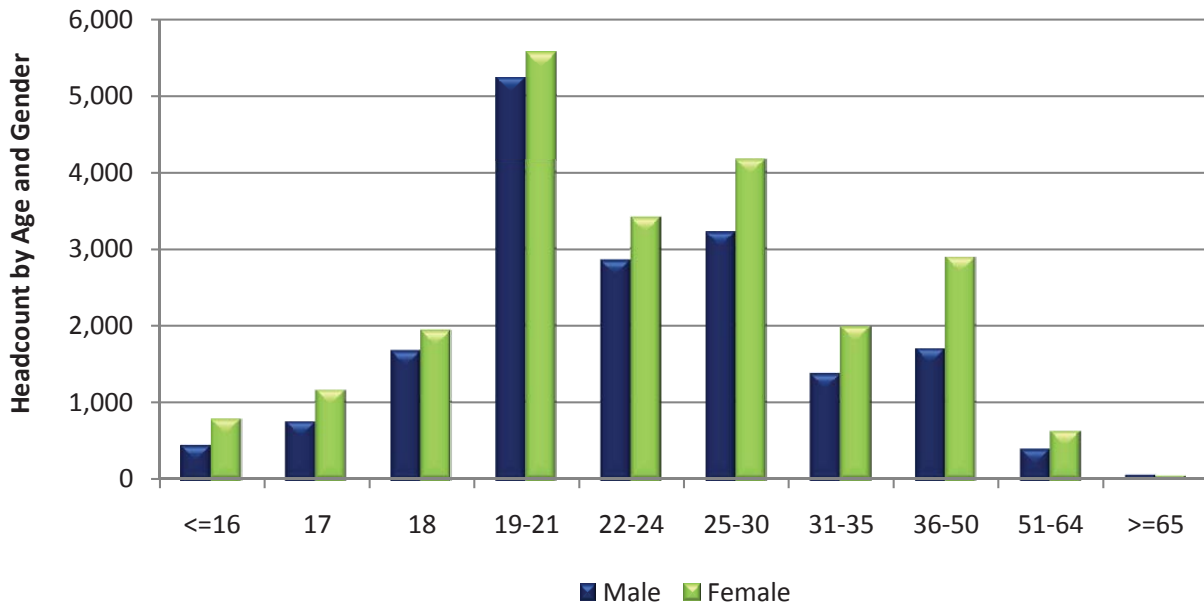
³ Full-time - 12 credit hours or more.

NOTE: Percents may not add to 100 and some numbers may not add up to the totals due to rounding.

Source: Fall 12th Class Day Data

**Student Characteristics
Headcount by Age and Gender
Fall 2009**

Age	Male		Female		Total	
16 and Under	438	2.48%	788	3.49%	1,226	3.05%
17	752	4.26%	1,162	5.15%	1,914	4.76%
18	1,666	9.43%	1,938	8.58%	3,604	8.95%
19-21	5,233	29.61%	5,567	24.66%	10,800	26.83%
22-24	2,846	16.10%	3,406	15.09%	6,252	15.53%
25-30	3,219	18.22%	4,166	18.45%	7,385	18.35%
31-35	1,372	7.76%	1,991	8.82%	3,363	8.36%
36-50	1,701	9.63%	2,893	12.81%	4,594	11.41%
51-64	395	2.24%	625	2.77%	1,020	2.53%
65 and over	49	0.28%	38	0.17%	87	0.22%
Unknown	1	0.01%	2	0.01%	3	0.01%
TOTAL	17,672	100.00%	22,576	100.00%	40,248	100.00%

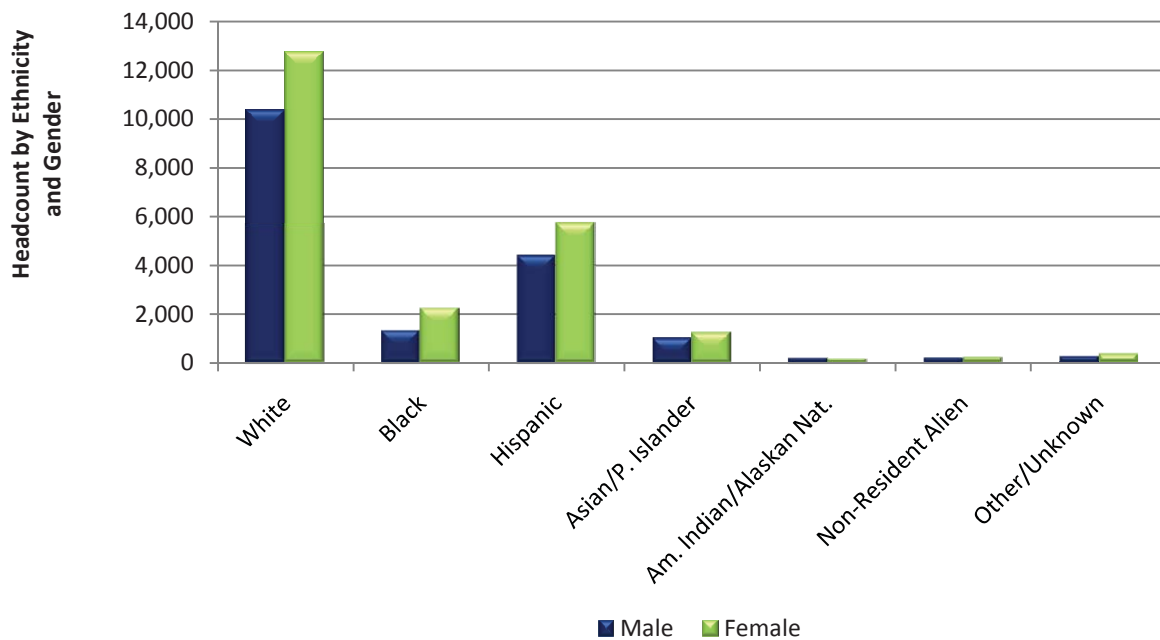


NOTE: Percents may not add to 100 due to rounding.

Source: Fall 12th Class Day Data

Student Characteristics Headcount by Ethnicity and Gender Fall 2009

Ethnicity	Male		Female		Total	
White	10,360	58.62%	12,683	56.18%	23,043	57.25%
Black	1,313	7.43%	2,230	9.88%	3,543	8.80%
Hispanic	4,365	24.70%	5,700	25.25%	10,065	25.01%
Asian/Pacific Islander	994	5.62%	1,228	5.44%	2,222	5.52%
Am. Indian/Alaskan Native	187	1.06%	162	0.72%	349	0.87%
Non-Resident Alien	201	1.14%	221	0.98%	422	1.05%
Other/Unknown	252	1.43%	352	1.56%	604	1.50%
TOTAL	17,672	100.00%	22,576	100.00%	40,248	100.00%



NOTE: Percents may not add to 100 due to rounding.

Source: Fall 12th Class Day Data

Student Characteristics
Headcount by Gender and Full/Part-time Status
Fall 2009

Gender	Full-time		Part-time		Total	
Male	5,510	50.95%	12,162	41.32%	17,672	43.91%
Female	5,305	49.05%	17,271	58.68%	22,576	56.09%
TOTAL	10,815	100.00%	29,433	100.00%	40,248	100.00%

Student Characteristics
Headcount by Ethnicity and Full/Part-time Status
Fall 2009

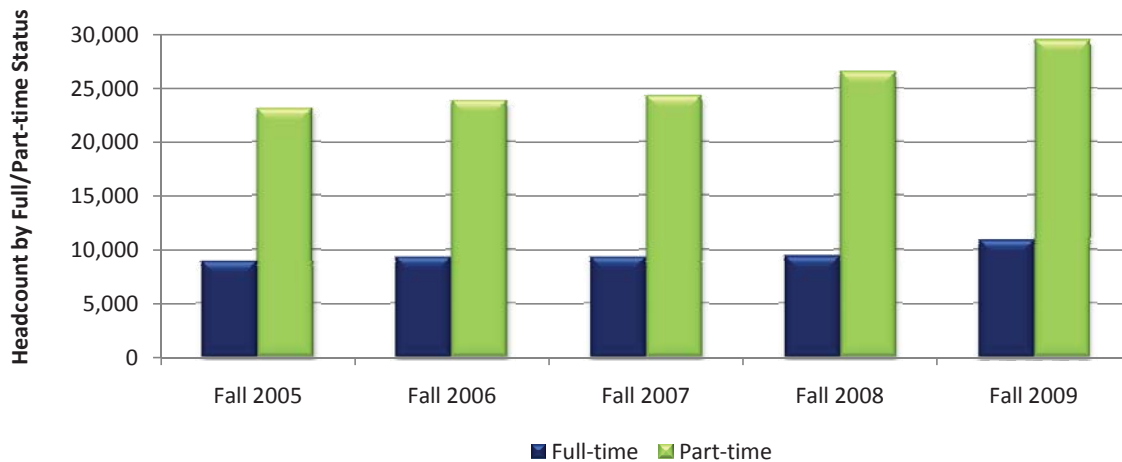
Ethnicity	Full-time		Part-time		Total	
White	6,541	60.48%	16,502	56.07%	23,043	57.25%
Black	774	7.16%	2,769	9.41%	3,543	8.80%
Hispanic	2,423	22.40%	7,642	25.96%	10,065	25.01%
Asian/Pacific Islander	672	6.21%	1,550	5.27%	2,222	5.52%
Am. Indian/Alaskan Native	109	1.01%	240	0.82%	349	0.87%
Non-Resident Alien	175	1.62%	247	0.84%	422	1.05%
Other/Unknown	121	1.12%	483	1.64%	604	1.50%
TOTAL	10,815	100.00%	29,433	100.00%	40,248	100.00%

NOTE: Percents may not add to 100 due to rounding.

Source: Fall 12th Class Day Data

Student Characteristics Headcount by Full/Part-time Status Fall 2005 - 2009

	Fall 2005	Fall 2006	Fall 2007	Fall 2008	Fall 2009	05-09 % chg
FULL-TIME STUDENTS¹						
Headcount	8,829	9,218	9,232	9,328	10,815	22.49%
% of Total	27.67%	27.90%	27.55%	26.06%	26.87%	
Average Hours Attempted	13.00	13.00	13.06	13.03	12.98	-0.15%
PART-TIME STUDENTS²						
Headcount	23,079	23,821	24,276	26,470	29,433	27.53%
% of Total	72.33%	72.10%	72.45%	73.94%	73.13%	
Average Hours Attempted	6.00	6.00	6.05	6.06	6.08	1.33%
TOTAL HEADCOUNT	31,908	33,039	33,508	35,798	40,248	26.14%



¹ Full-time students are those enrolled in 12 or more semester credit hours
² Part-time students are those enrolled in less than 12 semester credit hours.

NOTE: Percents may not add to 100 due to rounding.

Source: Fall 12th Class Day Data

**Student Characteristics
Headcount by Day/Evening Classification
Fall 2005 - 2009**

Classification	Fall 2005	Fall 2006	Fall 2007	Fall 2008	Fall 2009	05-09 % chg
Day % of Total	15,367 48.16%	15,927 48.21%	16,089 48.02%	17,279 48.27%	19,088 47.43%	24.21%
Evening % of Total	4,529 14.19%	4,640 14.04%	4,319 12.89%	4,322 12.07%	4,741 11.78%	4.68%
Distance Learning % of Total	2,518 7.89%	2,569 7.78%	2,926 8.73%	3,018 8.43%	3,275 8.14%	30.06%
Day & Evening % of Total	5,790 18.15%	6,023 18.23%	6,155 18.37%	6,547 18.29%	7,780 19.33%	34.37%
Day & Distance Learning % of Total	2,027 6.35%	2,211 6.69%	2,232 6.66%	2,523 7.05%	3,064 7.61%	51.16%
Evening & Distance Learning % of Total	820 2.57%	866 2.62%	953 2.84%	1,103 3.08%	1,161 2.88%	41.59%
Day & Evening & Distance Learning % of Total	686 2.15%	700 2.12%	761 2.27%	808 2.26%	1,017 2.53%	48.25%
Non-identifiable % of Total	171 0.54%	103 0.31%	73 0.22%	198 0.55%	122 0.30%	-28.65%
Total	31,908	33,039	33,508	35,798	40,248	26.14%

NOTES: Classifications are mutually exclusive. Day students are enrolled in courses that begin before 5:30 PM and evening students are enrolled in courses that begin at or after 5:30 PM. The "Non-identifiable" category includes self-paced courses and courses without designated meeting times. Percents may not add to 100 due to rounding.

Source: Fall 12th Class Day Data

**Headcount by Region and Zip Code
Fall 2005 - 2009**

Region	Zip Code	Fall 2005	Fall 2006	Fall 2007	Fall 2008	Fall 2009	05-09 % chg
Austin/Travis County, Central							
Austin	78701	140	127	109	114	120	-14.29%
Austin	78703	389	369	342	351	350	-10.03%
Austin	78705	940	918	949	940	1,052	11.91%
Austin	78712	1	0	1	0	0	.
Austin	78751	507	515	480	499	506	-0.20%
Austin	78752	338	349	329	359	362	7.10%
Austin	78756	170	190	193	185	198	16.47%
Austin	78757	588	556	522	499	538	-8.50%
Total		3,073	3,024	2,925	2,947	3,126	1.72%
% of Grand Total		9.63%	9.15%	8.73%	8.23%	7.77%	
Austin/Travis County, East							
Austin	78702	479	460	480	531	613	27.97%
Austin	78721	198	182	194	235	277	39.90%
Austin	78722	198	185	187	173	160	-19.19%
Austin	78723	557	533	507	541	658	18.13%
Total		1,432	1,360	1,368	1,480	1,708	19.27%
% of Grand Total		4.49%	4.12%	4.08%	4.13%	4.24%	
Austin/Travis County, North							
Austin	78727	686	763	751	740	853	24.34%
Austin	78728	336	327	337	403	498	48.21%
Austin	78758	1,456	1,381	1,444	1,391	1,555	6.80%
Total		2,478	2,471	2,532	2,534	2,906	17.27%
% of Grand Total		7.77%	7.48%	7.56%	7.08%	7.22%	
Austin/Travis County, Northwest							
Austin	78726	325	312	304	335	352	8.31%
Austin	78730	102	120	98	112	141	38.24%
Austin	78731	541	501	503	461	541	0.00%
Austin	78750	414	439	463	525	598	44.44%
Austin	78759	1,046	930	975	944	1,030	-1.53%
Total		2,428	2,302	2,343	2,377	2,662	9.64%
% of Grand Total		7.61%	6.97%	6.99%	6.64%	6.61%	

NOTES: Headcount based on zip code data as reported and entered in the ACC database. Zip code regions are based on definitions developed by ACC administration.

Source: Fall 12th Class Day Data

Headcount by Region and Zip Code (continued) Fall 2005 - 2009

Region	Zip Code	Fall 2005	Fall 2006	Fall 2007	Fall 2008	Fall 2009	05-09 % chg
Austin/Travis County, South							
Manchaca	78652	97	115	88	108	97	0.00%
Austin	78704	1,317	1,237	1,134	1,229	1,276	-3.11%
Austin	78745	1,722	1,791	1,756	1,674	1,909	10.86%
Austin	78748	1,045	1,121	1,166	1,251	1,439	37.70%
Total		4,181	4,264	4,144	4,262	4,721	12.92%
% of Grand Total		13.10%	12.91%	12.37%	11.91%	11.73%	
Austin/Travis County, Southeast							
Del Valle	78617	205	264	265	286	325	58.54%
Austin	78719	27	26	30	28	34	25.93%
Austin	78741	2,010	2,114	2,006	2,013	2,057	2.34%
Austin	78742	15	14	18	15	21	40.00%
Austin	78744	838	883	869	948	1,017	21.36%
Austin	78747	207	225	259	333	427	106.28%
Total		3,302	3,526	3,447	3,623	3,881	17.53%
% of Grand Total		10.35%	10.67%	10.29%	10.12%	9.64%	
Austin/Travis County, Southwest							
Austin	78735	265	259	257	282	334	26.04%
Austin	78736	218	234	240	240	255	16.97%
Austin	78739	280	296	328	348	333	18.93%
Austin	78746	317	353	355	322	385	21.45%
Austin	78749	1,086	1,044	1,064	1,046	1,071	-1.38%
Total		2,166	2,186	2,244	2,238	2,378	9.79%
% of Grand Total		6.79%	6.62%	6.70%	6.25%	5.91%	
Bastrop County¹							
Bastrop	78602	170	179	225	243	287	68.82%
Cedar Creek	78612	80	93	110	139	144	80.00%
Elgin	78621	146	168	183	214	194	32.88%
McDade	78650	9	14	8	9	10	11.11%
Paige	78659	14	25	17	12	22	57.14%
Red Rock	78662	31	27	23	22	30	-3.23%
Rosanky	78953	6	7	7	9	12	100.00%
Smithville	78957	46	50	65	53	58	26.09%
Total		502	563	638	701	757	50.80%
% of Grand Total		1.57%	1.70%	1.90%	1.96%	1.88%	

¹ These numbers do not represent total enrollment for the county due to zip codes that span more than one county.

NOTES: Headcount based on zip code data as reported and entered in the ACC database. Zip code regions are based on definitions developed by ACC administration.

Source: Fall 12th Class Day Data

**Headcount by Region and Zip Code (continued)
Fall 2005 - 2009**

Region	Zip Code	Fall 2005	Fall 2006	Fall 2007	Fall 2008	Fall 2009	05-09 % chg
Blanco County¹							
Blanco	78606	35	36	28	27	33	-5.71%
Hye	78635	2	3	0	2	1	-50.00%
Johnson City	78636	29	33	38	27	36	24.14%
Round Mountain	78663	3	8	9	8	6	100.00%
Total		69	80	75	64	76	10.14%
% of Grand Total		0.22%	0.24%	0.22%	0.18%	0.19%	
Burnet County¹							
Bertram	78605	14	11	17	11	22	57.14%
Briggs	78608	0	0	2	1	2	.
Burnet	78611	29	22	21	13	26	-10.34%
Marble Falls	78654	30	42	36	35	24	-20.00%
Total		73	75	76	60	74	1.37%
% of Grand Total		0.23%	0.23%	0.23%	0.17%	0.18%	
Caldwell County¹							
Dale	78616	54	54	72	76	85	57.41%
Lockhart	78644	186	227	215	252	265	42.47%
Luling	78648	59	39	55	73	53	-10.17%
Martindale	78655	26	34	24	20	28	7.69%
Maxwell	78656	26	27	22	23	26	0.00%
Total		351	381	388	444	457	30.20%
% of Grand Total		1.10%	1.15%	1.16%	1.24%	1.14%	
Cedar Park/Leander							
Cedar Park	78613	1,480	1,466	1,602	1,742	2,040	37.84%
Leander	78641	884	874	981	1,111	1,218	37.78%
Liberty Hill	78642	115	133	142	146	181	57.39%
Total		2,479	2,473	2,725	2,999	3,439	38.73%
% of Grand Total		7.77%	7.49%	8.13%	8.38%	8.54%	

¹ These numbers do not represent total enrollment for the county due to zip codes that span more than one county.

NOTES: Headcount based on zip code data as reported and entered in the ACC database. Zip code regions are based on definitions developed by ACC administration.

Source: Fall 12th Class Day Data

Headcount by Region and Zip Code (continued)
Fall 2005 - 2009

Region	Zip Code	Fall 2005	Fall 2006	Fall 2007	Fall 2008	Fall 2009	05-09 % chg
Georgetown/North Williamson County							
Florence	76527	6	15	18	14	27	350.00%
Granger	76530	3	8	9	14	10	233.33%
Jarrell	76537	45	43	41	55	67	48.89%
Georgetown	78626	204	226	221	271	280	37.25%
Georgetown	78628	346	369	406	376	395	14.16%
Georgetown	78633	0	0	11	90	124	.
Total		604	661	706	820	903	49.50%
% of Grand Total		1.89%	2.00%	2.11%	2.29%	2.24%	
Gillespie County¹							
Doss	78618	4	2	5	0	1	-75.00%
Fredericksburg	78624	113	120	110	141	161	42.48%
Harper	78631	32	34	31	25	34	6.25%
Stonewall	78671	2	3	0	5	1	-50.00%
Willow City	78675	1	0	1	1	2	100.00%
Total		152	159	147	172	199	30.92%
% of Grand Total		0.48%	0.48%	0.44%	0.48%	0.49%	
Gonzales County							
Leesville	78122	1	1	3	2	1	0.00%
Nixon	78140	13	12	22	14	20	53.85%
Smiley	78159	3	6	5	1	3	0.00%
Cost	78614	4	3	1	4	1	-75.00%
Gonzales	78629	21	16	14	6	10	-52.38%
Waelder	78959	0	0	0	2	2	.
Total		42	38	45	29	37	-11.90%
% of Grand Total		0.13%	0.12%	0.13%	0.08%	0.09%	

¹ These numbers do not represent total enrollment for the county due to zip codes that span more than one county.

NOTES: Headcount based on zip code data as reported and entered in the ACC database. Zip code regions are based on definitions developed by ACC administration.

Source: Fall 12th Class Day Data

**Headcount by Region and Zip Code (continued)
Fall 2005 - 2009**

Region	Zip Code	Fall 2005	Fall 2006	Fall 2007	Fall 2008	Fall 2009	05-09 % chg
Hays County¹							
Buda	78610	205	223	254	303	320	56.10%
Driftwood	78619	21	19	21	30	39	85.71%
Dripping Springs	78620	160	136	157	192	195	21.88%
Kyle	78640	277	323	394	438	515	85.92%
San Marcos	78666	584	648	699	691	729	24.83%
San Marcos	78667	17	19	11	14	31	82.35%
Wimberley	78676	127	123	190	142	149	17.32%
Austin	78737	185	175	169	209	220	18.92%
Total		1,576	1,666	1,895	2,019	2,198	39.47%
% of Grand Total		4.94%	5.04%	5.66%	5.64%	5.46%	
Manor/East Travis County							
Manor	78653	227	258	309	370	390	71.81%
Austin	78724	226	225	246	276	352	55.75%
Austin	78725	89	105	115	132	150	68.54%
Total		542	588	670	778	892	64.58%
% of Grand Total		1.70%	1.78%	2.00%	2.17%	2.22%	
Pflugerville/Northeast Travis County							
Pflugerville	78660	678	778	873	991	1,198	76.70%
Austin	78753	996	1,003	1,008	1,044	1,204	20.88%
Austin	78754	260	287	317	370	396	52.31%
Total		1,934	2,068	2,198	2,405	2,798	44.67%
% of Grand Total		6.06%	6.26%	6.56%	6.72%	6.95%	

¹ These numbers do not represent total enrollment for the county due to zip codes that span more than one county.

NOTES: Headcount based on zip code data as reported and entered in the ACC database. Zip code regions are based on definitions developed by ACC administration.

Source: Fall 12th Class Day Data

Headcount by Region and Zip Code (continued) Fall 2005 - 2009

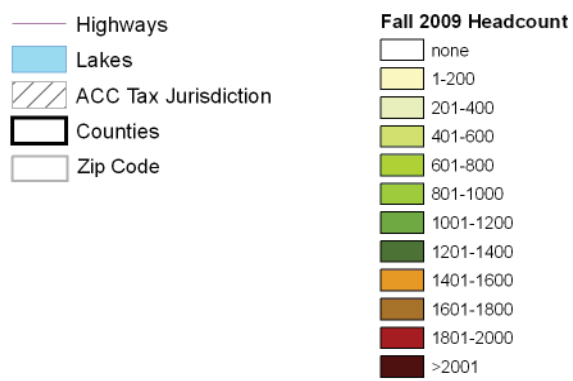
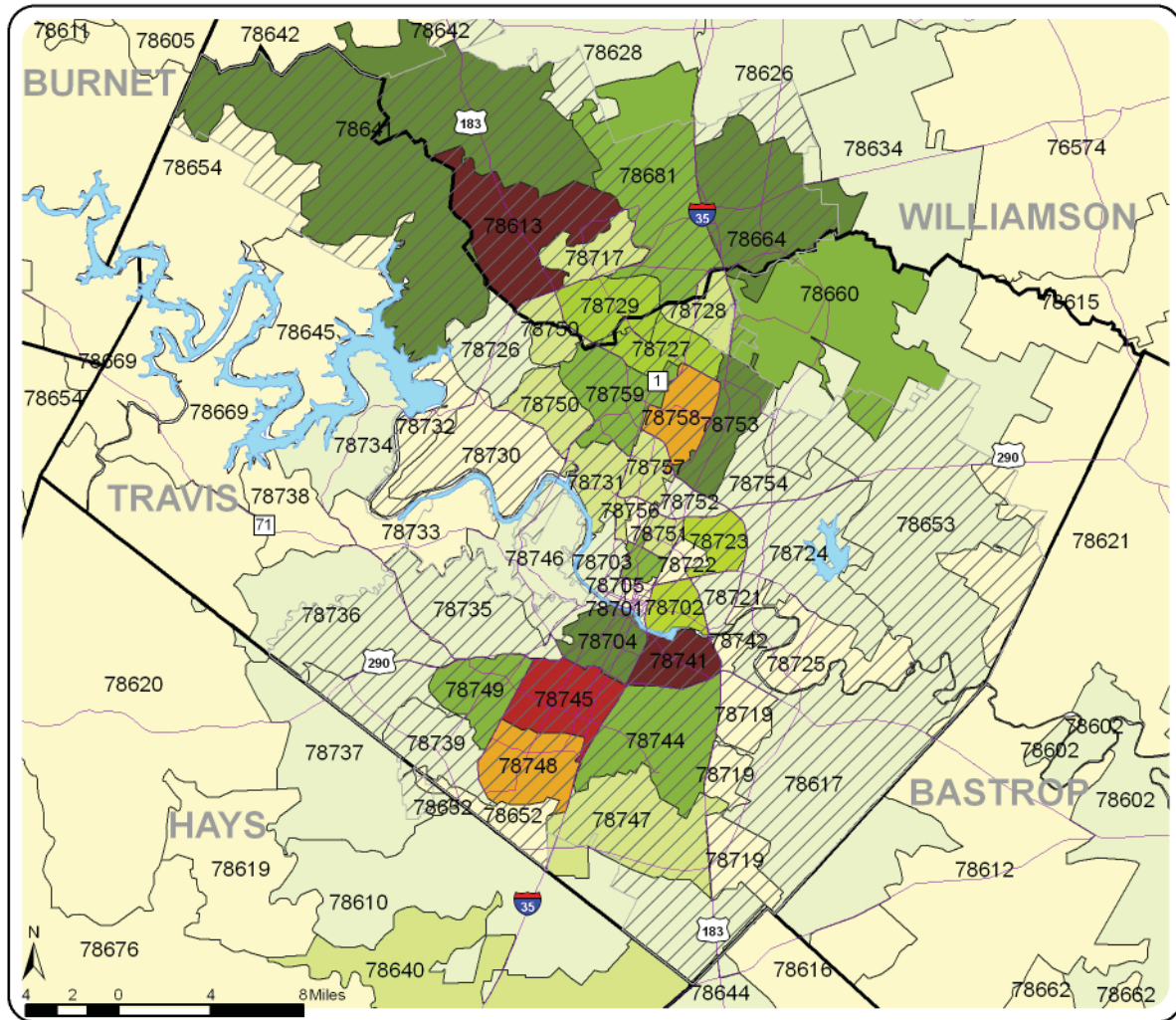
Region	Zip Code	Fall 2005	Fall 2006	Fall 2007	Fall 2008	Fall 2009	05-09 % chg
Round Rock							
Round Rock	78664	888	952	1,013	1,163	1,280	44.14%
Round Rock	78665	0	0	27	307	647	.
Round Rock	78681	544	584	603	846	1,119	105.70%
Austin	78717	278	358	357	432	588	111.51%
Austin	78729	497	474	544	645	834	67.81%
Total		2,207	2,368	2,544	3,393	4,468	102.45%
% of Grand Total		6.92%	7.17%	7.59%	9.48%	11.10%	
Taylor/Hutto/East Williamson County							
Taylor	76574	33	26	36	33	55	66.67%
Thrall	76578	3	3	2	6	4	.
Coupland	78615	3	5	5	12	8	166.67%
Hutto	78634	93	118	171	182	229	146.24%
Total		132	152	214	233	296	124.24%
% of Grand Total		0.41%	0.46%	0.64%	0.65%	0.74%	
West Travis County							
Leander	78645	121	147	144	107	142	17.36%
Spicewood	78669	41	60	53	68	78	90.24%
Austin	78732	105	114	148	136	172	63.81%
Austin	78733	79	77	81	84	94	18.99%
Austin	78734	191	201	181	214	209	9.42%
Austin	78738	87	93	109	117	144	65.52%
Total		624	692	716	726	839	34.46%
% of Grand Total		1.96%	2.09%	2.14%	2.03%	2.08%	
Other/Unknown		1,561	1,942	1,468	1,494	1,433	-8.20%
Total		1,561	1,942	1,468	1,494	1,433	-8.20%
% of Grand Total		4.89%	5.88%	4.38%	4.17%	3.56%	
GRAND TOTAL		31,908	33,039	33,508	35,798	40,248	26.14%

NOTES: Headcount based on zip code data as reported and entered in the ACC database. Zip code regions are based on definitions developed by ACC administration.

Source: Fall 12th Class Day Data

Austin Community College Headcount by Zip Code Map Fall 2009

The shaded areas represent the zip code boundaries for data shown on the previous pages.



NOTE: Headcount based on zip code data as reported and entered in the ACC database.

Source: Fall 12th Class Day Data

Headcount by Zip Code Fall 2005 - 2009

Zip Code	Region	Fall 2005	Fall 2006	Fall 2007	Fall 2008	Fall 2009	05-09 % chg
76527	Florence	6	15	18	14	27	350.00%
76530	Granger	3	8	9	14	10	233.33%
76537	Jarrell	45	43	41	55	67	48.89%
76574	Taylor	33	26	36	33	55	66.67%
76578	Thrall	3	3	2	6	4	33.33%
78122	Leesville	1	1	3	2	1	0.00%
78140	Nixon	13	12	22	14	20	53.85%
78159	Smiley	3	6	5	1	3	0.00%
78602	Bastrop	170	179	225	243	287	68.82%
78605	Bertram	14	11	17	11	22	57.14%
78606	Blanco	35	36	28	27	33	-5.71%
78608	Briggs	0	0	2	1	2	.
78610	Buda	205	223	254	303	320	56.10%
78611	Burnet	29	22	21	13	26	-10.34%
78612	Cedar Creek	80	93	110	139	144	80.00%
78613	Cedar Park	1,480	1,466	1,602	1,742	2,040	37.84%
78614	Cost	4	3	1	4	1	-75.00%
78615	Coupland	3	5	5	12	8	166.67%
78616	Dale	54	54	72	76	85	57.41%
78617	Del Valle	205	264	265	286	325	58.54%
78618	Doss	4	2	5	0	1	-75.00%
78619	Driftwood	21	19	21	30	39	85.71%
78620	Dripping Springs	160	136	157	192	195	21.88%
78621	Elgin	146	168	183	214	194	32.88%
78624	Fredericksburg	113	120	110	141	161	42.48%
78626	Georgetown	204	226	221	271	280	37.25%
78628	Georgetown	346	369	406	376	395	14.16%
78629	Gonzales	21	16	14	6	10	-52.38%
78631	Harper	32	34	31	25	34	6.25%
78633	Georgetown	0	0	11	90	124	.
78634	Hutto	93	118	171	182	229	146.24%
78635	Hye	2	3	0	2	1	-50.00%
78636	Johnson City	29	33	38	27	36	24.14%
78640	Kyle	277	323	394	438	515	85.92%
78641	Leander	884	874	981	1,111	1,218	37.78%
78642	Liberty Hill	115	133	142	146	181	57.39%
78644	Lockhart	186	227	215	252	265	42.47%
78645	Leander	121	147	144	107	142	17.36%
78648	Luling	59	39	55	73	53	-10.17%
78650	McDade	9	14	8	9	10	11.11%

¹ These numbers do not represent total enrollment for the county due to zip codes that span more than one county.

NOTES: Headcount based on zip code data as reported and entered in the ACC database. Zip code regions are based on definitions developed by ACC administration.

Source: Fall 12th Class Day Data

Headcount by Zip Code (continued)
Fall 2005 - 2009

Zip Code	Region	Fall 2005	Fall 2006	Fall 2007	Fall 2008	Fall 2009	05-09 % chg	
78652	Manchaca	Austin/Travis County, South	97	115	88	108	97	0.00%
78653	Manor	Manor/East Travis County	227	258	309	370	390	71.81%
78654	Marble Falls	Burnet County ¹	30	42	36	35	24	-20.00%
78655	Martindale	Caldwell County ¹	26	34	24	20	28	7.69%
78656	Maxwell	Caldwell County ¹	26	27	22	23	26	0.00%
78659	Paige	Bastrop County ¹	14	25	17	12	22	57.14%
78660	Pflugerville	Pflugerville/Northeast Travis County	678	778	873	991	1,198	76.70%
78662	Red Rock	Bastrop County ¹	31	27	23	22	30	-3.23%
78663	Round Mountain	Blanco County ¹	3	8	9	8	6	100.00%
78664	Round Rock	Round Rock	888	952	1,013	1,163	1,280	44.14%
78665	Round Rock	Round Rock	0	0	27	307	647	.
78666	San Marcos	Hays County ¹	584	648	699	691	729	24.83%
78667	San Marcos	Hays County ¹	17	19	11	14	31	82.35%
78669	Spicewood	West Travis County	41	60	53	68	78	90.24%
78671	Stonewall	Gillespie County ¹	2	3	0	5	1	-50.00%
78675	Willow City	Gillespie County ¹	1	0	1	1	2	100.00%
78676	Wimberley	Hays County ¹	127	123	190	142	149	17.32%
78681	Round Rock	Round Rock	544	584	603	846	1,119	105.70%
78701	Austin	Austin/Travis County, Central	140	127	109	114	120	-14.29%
78702	Austin	Austin/Travis County, East	479	460	480	531	613	27.97%
78703	Austin	Austin/Travis County, Central	389	369	342	351	350	-10.03%
78704	Austin	Austin/Travis County, South	1,317	1,237	1,134	1,229	1,276	-3.11%
78705	Austin	Austin/Travis County, Central	940	918	949	940	1,052	11.91%
78712	Austin	Austin/Travis County, Central	1	0	1	0	0	.
78717	Austin	Round Rock	278	358	357	432	588	111.51%
78719	Austin	Austin/Travis County, Southeast	27	26	30	28	34	25.93%
78721	Austin	Austin/Travis County, East	198	182	194	235	277	39.90%
78722	Austin	Austin/Travis County, East	198	185	187	173	160	-19.19%
78723	Austin	Austin/Travis County, East	557	533	507	541	658	18.13%
78724	Austin	Manor/East Travis County	226	225	246	276	352	55.75%
78725	Austin	Manor/East Travis County	89	105	115	132	150	68.54%
78726	Austin	Austin/Travis County, Northwest	325	312	304	335	352	8.31%
78727	Austin	Austin/Travis County, North	686	763	751	740	853	24.34%
78728	Austin	Austin/Travis County, North	336	327	337	403	498	48.21%
78729	Austin	Round Rock	497	474	544	645	834	67.81%
78730	Austin	Austin/Travis County, Northwest	102	120	98	112	141	38.24%
78731	Austin	Austin/Travis County, Northwest	541	501	503	461	541	0.00%
78732	Austin	West Travis County	105	114	148	136	172	63.81%
78733	Austin	West Travis County	79	77	81	84	94	18.99%
78734	Austin	West Travis County	191	201	181	214	209	9.42%
78735	Austin	Austin/Travis County, Southwest	265	259	257	282	334	26.04%

¹ These numbers do not represent total enrollment for the county due to zip codes that span more than one county.

NOTES: Headcount based on zip code data as reported and entered in the ACC database. Zip code regions are based on definitions developed by ACC administration.

Source: Fall 12th Class Day Data

Headcount by Zip Code (continued) Fall 2005 - 2009

Zip Code	Region	Fall 2005	Fall 2006	Fall 2007	Fall 2008	Fall 2009	05-09 % chg
78736	Austin Austin/Travis County, Southwest	218	234	240	240	255	16.97%
78737	Austin Hays County ¹	185	175	169	209	220	18.92%
78738	Austin West Travis County	87	93	109	117	144	65.52%
78739	Austin Austin/Travis County, Southwest	280	296	328	348	333	18.93%
78741	Austin Austin/Travis County, Southeast	2,010	2,114	2,006	2,013	2,057	2.34%
78742	Austin Austin/Travis County, Southeast	15	14	18	15	21	40.00%
78744	Austin Austin/Travis County, Southeast	838	883	869	948	1,017	21.36%
78745	Austin Austin/Travis County, South	1,722	1,791	1,756	1,674	1,909	10.86%
78746	Austin Austin/Travis County, Southwest	317	353	355	322	385	21.45%
78747	Austin Austin/Travis County, Southeast	207	225	259	333	427	106.28%
78748	Austin Austin/Travis County, South	1,045	1,121	1,166	1,251	1,439	37.70%
78749	Austin Austin/Travis County, Southwest	1,086	1,044	1,064	1,046	1,071	-1.38%
78750	Austin Austin/Travis County, Northwest	414	439	463	525	598	44.44%
78751	Austin Austin/Travis County, Central	507	515	480	499	506	-0.20%
78752	Austin Austin/Travis County, Central	338	349	329	359	362	7.10%
78753	Austin Pflugerville/Northeast Travis County	996	1,003	1,008	1,044	1,204	20.88%
78754	Austin Pflugerville/Northeast Travis County	260	287	317	370	396	52.31%
78756	Austin Austin/Travis County, Central	170	190	193	185	198	16.47%
78757	Austin Austin/Travis County, Central	588	556	522	499	538	-8.50%
78758	Austin Austin/Travis County, North	1,456	1,381	1,444	1,391	1,555	6.80%
78759	Austin Austin/Travis County, Northwest	1,046	930	975	944	1,030	-1.53%
78953	Rosanky Bastrop County ¹	6	7	7	9	12	100.00%
78957	Smithville Bastrop County ¹	46	50	65	53	58	26.09%
78959	Waelder Gonzales County	0	0	0	2	2	.
	Other/Unknown	1,561	1,942	1,468	1,494	1,433	-8.20%
	GRAND TOTAL	31,908	33,039	33,508	35,798	40,248	26.14%

¹ These numbers do not represent total enrollment for the county due to zip codes that span more than one county.

NOTES: Headcount based on zip code data as reported and entered in the ACC database. Zip code regions are based on definitions developed by ACC administration.

Source: Fall 12th Class Day Data

**Declared Majors
Fall 2006 - 2009**

Associate of Arts (AA)

	Fall 2006	Fall 2007	Fall 2008	Fall 2009	06-09 % chg
Anthropology	120	97	124	139	15.83%
Art	527	599	616	641	21.63%
Communications ¹	71	75	0	13	-81.69%
Creative Writing	46	34	42	87	89.13%
Dance	80	75	82	85	6.25%
Drama	122	136	127	143	17.21%
Economics	148	127	173	150	1.35%
English	338	346	390	420	24.26%
Foreign Lanuage					
Arabic	0	0	6	9	.
Chinese	0	0	6	10	.
French	27	32	40	48	77.78%
General	3	4	4	3	0.00%
German	18	16	19	17	-5.56%
Japanese	33	41	46	61	84.85%
Latin	1	1	4	6	500.00%
Russian	8	11	6	11	37.50%
Spanish	124	131	146	159	28.23%
General Studies in Liberal Arts	2,838	2,654	3,279	3,169	11.66%
Early Childhood Education ¹	368	213	177	93	-74.73%
Grade 4-8 Certification ¹	80	43	33	23	-71.25%
Geography	36	34	43	42	16.67%
Geographic Information Systems	2	11	13	24	1100.00%
Government	207	197	237	240	15.94%
History	313	273	350	368	17.57%
Journalism	250	268	280	336	34.40%
Music	346	414	437	487	40.75%
Performing Arts ¹	8	10	7	4	-50.00%
Philosophy	76	62	91	102	34.21%
Psychology	845	871	1,006	1,084	28.28%
Radio-Television-Film	403	376	425	441	9.43%
Social Work	206	189	248	303	47.09%
Sociology	118	111	140	166	40.68%
Speech	60	49	59	80	33.33%
Undeclared	669	700	474	572	-14.50%
TOTAL	8,491	8,200	9,130	9,536	12.31%

¹ Program is no longer active, but students already in the pipeline may be allowed to complete the degree plan.

Source: Fall 12th Class Day Data

Declared Majors Fall 2006 - 2009

Associate of Arts in Teaching (AAT)

	Fall 2006	Fall 2007	Fall 2008	Fall 2009	06-09 % chg
Education					
4-8 Grade Levels	91	179	307	375	312.09%
8-12 Grade Levels	133	254	370	486	265.41%
EC-4 Grade Levels - Early Childhood Specialization	193	451	607	616	219.17%
EC-6 Grade Levels - Early Childhood Specialization	.	.	.	215	.
TOTAL	417	884	1,284	1,692	305.76%

Associate of Science (AS)

	Fall 2006	Fall 2007	Fall 2008	Fall 2009	06-09 % chg
Archaeology	.	.	4	25	.
Biology	542	517	611	717	32.29%
Business Administration	1,632	1,592	2,027	2,109	29.23%
Chemistry	122	118	160	177	45.08%
Computer Science					
Computer Science	585	554	549	600	2.56%
Computer Information Systems	.	.	9	43	.
Engineering	677	708	791	900	32.94%
Environmental Studies	56	54	84	118	110.71%
General Studies in Science	219	240	333	365	66.67%
Geology	67	52	52	74	10.45%
Health & Kinesiology					
Health	228	216	242	290	27.19%
Kinesiology	337	261	358	427	26.71%
Mathematics	140	132	177	169	20.71%
Physical Sciences ¹	11	8	6	5	-54.55%
Physics - Astronomy	70	82	92	101	44.29%
Pre-Dental	154	141	129	128	-16.88%
Pre-Medical	536	665	653	762	42.16%
Pre-Pharmacy	222	236	266	280	26.13%
Pre-Veterinary	139	123	138	201	44.60%
Undeclared	343	347	204	244	-28.86%
TOTAL	6,080	6,046	6,885	7,735	27.22%

¹ Program is no longer active, but students already in the pipeline may be allowed to complete the degree plan.

NOTE: A "." means that the program did not exist that semester.

Source: Fall 12th Class Day Data

**Declared Majors
Fall 2006 - 2009**

Associate of Applied Science (AAS)

	Fall 2006	Fall 2007	Fall 2008	Fall 2009	06-09 % chg
Architectural and Engineering Computer Aided Design					
Architectural Specialization	226	282	284	305	34.96%
Electronic Graphics Specialization	31	26	27	32	3.23%
Interdisciplinary Specialization	10	15	15	20	100.00%
Mechanical Specialization	44	49	55	67	52.27%
Accounting	71	75	52	38	-46.48%
Accounting Specialist	185	132	252	294	58.92%
Accounting Technician	73	199	122	146	100.00%
Professional Accountant ¹	212	90	105	89	-58.02%
Auto Body Collision and Refinishing	.	.	1	15	.
Automotive Technology	122	122	129	184	50.82%
Biotechnology	56	53	55	85	51.79%
Building Construction Technology					
Construction Management	63	60	86	103	63.49%
Business & Technical Communication	.	13	35	58	.
Business & Government Communications	64	99	105	120	87.50%
Technical Communications	83	78	93	93	12.05%
Business Management ¹	5	3	2	0	-100.00%
Child Development	173	150	157	150	-13.29%
Commercial Art ¹	16	14	17	11	-31.25%
Commercial Music Management	192	182	227	241	25.52%
Computer Information Technology	58	56	49	34	-41.38%
Computer Programming	259	256	275	284	9.65%
Local Area Network Systems-Network Administration	112	116	98	116	3.57%
Local Area Network Systems-Security Administration	.	.	31	50	.
Microcomputer Application Support	31	25	25	15	-51.61%
Microcomputer Applications - User & Desktop Support	.	3	8	11	.
Web Programming Specialization	1	10	18	36	3500.00%
Criminal Justice	6	1	3	1	-83.33%
Corrections	166	158	168	189	13.86%
Law Enforcement	405	379	495	609	50.37%
Law Enforcement Advanced Skills ¹	6	4	1	2	-66.67%
Culinary Arts	104	115	134	149	43.27%
Dental Hygiene	146	198	301	380	160.27%
Electronics and Advanced Technology					
Automation,Robotics and Control Technology	19	20	20	17	-10.53%
Bioinstrumentation Technology Specialization	.	.	4	19	.
Networking/Computer Electronics	26	24	26	30	15.38%
Electronic Technology ¹	1	2	.	.	.
Engineering	108	112	123	109	0.93%
Power Technology Specialization	2	14	19	19	850.00%
Renewable Energy Specialization	.	.	13	88	.
Robotics/Instrumentation & Control ¹	3	3	.	.	.
Semiconductor Manufacturing Technology	31	24	20	17	-45.16%
Technician	70	52	62	72	2.86%

¹ Program is no longer active, but students already in the pipeline may be allowed to complete the degree plan.

NOTE: A "." means that the program did not exist that semester.

Source: Fall 12th Class Day Data

Declared Majors Fall 2006 - 2009

Associate of Applied Science (AAS) (continued)

	Fall 2006	Fall 2007	Fall 2008	Fall 2009	06-09 % chg
Emergency Medical Services Professions	130	130	143	159	22.31%
Tech Prep ¹	2	2	.	.	.
Engineering Design Graphics ¹	15	10	8	10	-33.33%
Environmental Technology	19	21	27	29	52.63%
Financial Management and Mortgage Banking	38	27	41	22	-42.11%
Fire Protection Technology	74	62	97	132	78.38%
Game Development					
Game & Visualization Programming Specialization	.	.	8	29	.
Game Art Specialization	.	.	8	34	.
Game Design Specialization	.	.	11	55	.
Geographic Information Systems	.	.	.	1	.
Heating, Air Conditioning, & Refrigeration Technology	40	49	62	78	95.00%
Hospitality Management	1	0	2	0	-100.00%
Baccalaureate Prep Specialization	9	8	15	15	66.67%
Food & Lodging Specialization	13	8	8	16	23.08%
Hotel & Lodging Specialization	22	13	13	18	-18.18%
Hotel Specialization ¹	.	3	3	2	.
Meeting and Event Planning Specialization	23	22	30	34	47.83%
Restaurant Specialization ¹	.	1	1	.	.
Travel & Tourism	6	10	17	15	150.00%
Human Services					
Addictions Counseling	57	40	68	74	29.82%
General Human Services	89	81	82	92	3.37%
Interpreter Preparation Program	59	74	103	110	86.44%
Therapeutic Recreation	20	19	18	25	25.00%
International Business	19	46	80	111	484.21%
Jewelry	15	18	27	32	113.33%
Land Surveying Technology/Geomatics	17	25	24	22	29.41%
Management	306	296	325	328	7.19%
Administrative Specialist ¹	1	2	1	.	.
Marketing	234	232	240	201	-14.10%
Fashion Merchandising	108	109	96	97	-10.19%
Medical Laboratory Technology	72	82	77	99	37.50%
Medical Coding	.	.	.	18	.
Nursing					
Nursing Mobility Track	40	76	135	139	247.50%
Nursing Traditional Track	476	921	2,391	3,233	579.20%
Occupational Therapy Assistant	45	53	68	93	106.67%
Office Administration	17	15	11	3	-82.35%
Administrative Assistant	35	34	54	81	131.43%
Legal Administrative Assistant	19	19	20	20	5.26%
Medical Administrative Assistant	42	39	47	71	69.05%

¹ Program is no longer active, but students already in the pipeline may be allowed to complete the degree plan.

NOTE: A "." means that the program did not exist that semester.

Source: Fall 12th Class Day Data

**Declared Majors
Fall 2006 - 2009**

Associate of Applied Science (AAS) (continued)

	Fall 2006	Fall 2007	Fall 2008	Fall 2009	06-09 % chg
Paralegal	155	146	163	182	17.42%
Personal Fitness Trainer	16	19	43	56	250.00%
Photographic Technology					
Advertising-Fashion Focus	61	57	70	85	39.34%
People-Portrait Focus	61	53	62	75	22.95%
Photography & Graphic Arts ¹	1	1	1	0	-100.00%
Professional Photography ¹	5	5	3	3	-40.00%
Physical Fitness Technician ¹	3	12	6	1	-66.67%
Physical Therapist Assistant	212	191	211	299	41.04%
Printing & Desktop Publishing Production ¹	16	13	.	1	-93.75%
Quality Assurance Management & Technology ¹	.	2	.	.	.
Radiology ¹	388	406	427	477	22.94%
Real Estate	96	115	111	90	-6.25%
Sonography					
Diagnostic Cardiac Sonography	25	30	54	63	152.00%
Diagnostic Medical Sonography	72	95	209	292	305.56%
Surgical Technology	81	74	93	111	37.04%
Undeclared	305	342	223	247	-19.02%
Visual Communication Design	61	47	30	22	-63.93%
2D Animation Specialization	25	25	38	38	52.00%
3D Animation Specialization	111	112	133	98	-11.71%
3D Modeling Specialization	.	.	9	18	.
Graphic Arts Technology Specialization	.	6	25	26	.
Graphic Design Specialization	128	146	217	239	86.72%
Interactive Design Specialization	23	32	40	50	117.39%
Welding Technology	.	2	6	3	.
Art Metals	40	28	28	41	2.50%
Code Welding	36	32	35	57	58.33%
Code Welding-US Navy - Tech Prep ¹	4	2	3	1	-75.00%
TOTAL	7,168	7,754	10,313	12,371	72.59%

¹ Program is no longer active, but students already in the pipeline may be allowed to complete the degree plan.

NOTE: A "." means that the program did not exist that semester.

Source: Fall 12th Class Day Data

Declared Majors Fall 2006 - 2009

Certificates

	Fall 2006	Fall 2007	Fall 2008	Fall 2009	06-09 % chg
Accounting					
Accounting Clerk	103	119	141	145	40.78%
Professional Accountant	39	55	82	167	328.21%
Architectural and Engineering Computer Aided Design					
Architectural and Engineering CAD	2	14	65	84	4100.00%
Civil CAD Specialization	.	.	4	7	.
Integrated Circuit Layout & Design Specialization	5	12	26	26	420.00%
Auto Body Collision and Refinishing					
Auto Body Collision Repair	.	.	5	12	.
Auto Body Refinishing	.	.	1	7	.
Automotive Technology					
Automotive Drive Train Specialist	8	6	3	6	-25.00%
Automotive Engine Performance Specialist	24	29	38	34	41.67%
Automotive Heating & Air Conditioning	13	8	9	10	-23.08%
Automotive Technician	87	85	123	141	62.07%
Automotive Technology Advanced Skills Certificate ¹	0	1	5	5	.
Automotive Technology Enhanced Skills Certificate	8	9	12	17	112.50%
Brake & Suspension	6	3	7	10	66.67%
Marine Engine Repair	5	4	6	7	40.00%
Motorcycle Repair	16	14	13	11	-31.25%
Small Engine Repair	1	5	8	5	400.00%
Biotechnology	29	42	38	46	58.62%
Building Construction Technology					
Cabinetry & Interior Finishes ¹	3	3	3	3	0.00%
Carpentry	38	24	29	35	-7.89%
Construction Manager	12	24	33	31	158.33%
Enhanced Skills Certificate ¹	0	2	0	0	.
Woodworking	16	17	17	21	31.25%
Business and Technical Communications					
Business & Government Communications	203	312	341	373	83.74%
Technical Communications	103	149	135	157	52.43%
Child Development	250	336	306	319	27.60%
Enhanced Skills	25	35	23	22	-12.00%
Computer Information Technology					
Computer Information Technology Database	67	77	78	103	53.73%
Computer Programming-C++ Track	47	43	45	52	10.64%
Computer Programming-Java Track	25	30	36	45	80.00%
Local Area Network Systems Network Administration	25	19	21	17	-32.00%
Microcomputer Applications-User and Desktop Support	.	.	.	2	.
Web Developer Specialist	27	46	34	42	55.56%
Criminal Justice - Texas Peace Officer Sequence	125	157	142	179	43.20%
Culinary Arts	50	70	70	100	100.00%
Culinarian	10	11	20	10	0.00%

¹ Program is no longer active, but students already in the pipeline may be allowed to complete the degree plan.

NOTE: A "." means that the program did not exist that semester.

Source: Fall 12th Class Day Data

**Declared Majors
Fall 2006 - 2009
Certificates (continued)**

	<u>Fall 2006</u>	<u>Fall 2007</u>	<u>Fall 2008</u>	<u>Fall 2009</u>	<u>06-09 % chg</u>
Diagnostic Medical Imaging					
Advanced Technical Certificate	8	7	3	0	-100.00%
Diagnostic Cardiac Sonography	0	1	0	0	.
Diagnostic Medical Sonography	.	.	.	4	.
Vascular Technology Enhanced Skills Certificate	0	2	2	8	.
Digital Publishing & Graphics Technology ¹	5	5	0	0	-100.00%
Electronics and Advanced Technologies					
Automation, Robotics and Controls Technology	7	9	9	8	14.29%
Bioinstrumentation Technology Specialization	.	.	.	2	.
Networking/Computer Electronics	20	24	32	26	30.00%
Electronic Technology ¹	0	1	0	0	.
Engineering Technology	57	97	95	123	115.79%
Power Technology	1	3	8	5	400.00%
Renewable Energy Specialization	.	.	1	20	.
Semiconductor Manufacturing Technology Specialist Technician	11	10	9	6	-45.45%
Technician	22	24	22	37	68.18%
Emergency Medical Services					
EMT Intermediate Certificate	13	22	22	25	92.31%
EMT Paramedic Certificate	29	36	34	42	44.83%
Engineering Design Graphics ¹	50	47	26	18	-64.00%
Environmental Science and Technology	1	0	7	16	1500.00%
Financial Management and Mortgage Banking	5	0	0	.	-100.00%
Financial Management ¹	0	1	0	0	.
Mortgage Banking	0	10	7	5	.
Fire Protection	55	76	67	86	56.36%
Game Development					
Game Art	.	.	1	2	.
Game Design	.	.	.	13	.
Heating, Air Conditioning & Refrigeration	63	47	53	89	41.27%
Hospitality Management	26	33	31	28	7.69%
Meeting Planning	20	14	12	14	-30.00%
Travel & Tourism	18	29	33	38	111.11%
Human Services	2	1	2	2	0.00%
Addictions Counseling	26	36	44	48	84.62%
Addictions Counseling in the Criminal Justice System	.	0	6	8	.
American Sign Language Studies	38	57	55	65	71.05%
Interpreter Preparation Program	19	24	29	34	78.95%
Therapeutic Recreation	14	27	25	36	157.14%
International Business	78	55	66	60	-23.08%
Jewelry	22	23	32	24	9.09%
Land Surveying Technology/Geomatics	10	7	9	12	20.00%

¹ Program is no longer active, but students already in the pipeline may be allowed to complete the degree plan.

NOTE: A "." means that the program did not exist that semester.

Source: Fall 12th Class Day Data

Declared Majors Fall 2006 - 2009

Certificates (continued)

	Fall 2006	Fall 2007	Fall 2008	Fall 2009	06-09 % chg
Management	9	5	4	4	-55.56%
Administrative Management	83	106	121	104	25.30%
International Business ¹	.	7	6	5	.
Legal Assistant	68	66	72	51	-25.00%
Management Specialties Leadership	13	18	27	21	61.54%
Small Business Management	86	87	68	66	-23.26%
Marketing	1	1	1	0	-100.00%
Basic Skills	96	128	112	116	20.83%
Enhanced Skills Certificate	26	30	22	15	-42.31%
Fashion Merchandising	54	53	41	38	-29.63%
Medical Coding Specialist	45	67	62	80	77.78%
Nursing (Vocational)	463	494	511	612	32.18%
Office Administration					
Administrative Assistant	32	34	28	43	34.38%
Enhanced Skills	0	0	1	1	.
Legal Administrative Assistant Specialization	12	17	18	17	41.67%
Medical Administrative Assistant Specialization	19	14	4	18	-5.26%
Medical Office Assistant Specialization	28	36	41	50	78.57%
Office Assistant	16	21	27	21	31.25%
Software Applications Specialist	3	6	3	2	-33.33%
Paralegal	0	0	2	18	.
Personal Fitness Trainer	44	38	52	38	-13.64%
Fitness Specialist	.	.	.	19	.
Pharmacy Technician	93	120	120	141	51.61%
Photographic Technology					
Digital Assistant	0	1	2	2	.
Photographic Artist	73	80	63	77	5.48%
Photographic Assistant ¹	10	5	3	1	-90.00%
Photojournalism ¹	15	33	36	15	0.00%
Physical Fitness Technology ¹	3	3	4	1	-66.67%
Quality Management & Technology Certificate	1	0	0	0	-100.00%
Radiology					
Cardiovascular Interventional Radiology ¹	12	10	18	14	16.67%
Computerized Tomography ¹	2	2	1	2	0.00%
Magnetic Resonance Imaging ¹	1	3	2	8	700.00%
Radio-Television-Film					
Film/Production Video	37	63	73	87	135.14%
Film/Video Production Management	14	15	15	25	78.57%
Industrial Video ¹	0	5	5	1	.
Industrial Video Production Management ¹	0	4	1	3	.

¹ Program is no longer active, but students already in the pipeline may be allowed to complete the degree plan.

NOTE: A "." means that the program did not exist that semester.

Source: Fall 12th Class Day Data

**Declared Majors
Fall 2006 - 2009**

Certificates (continued)

	Fall 2006	Fall 2007	Fall 2008	Fall 2009	06-09 % chg
Real Estate	143	146	128	111	-22.38%
Surgical Technology	24	27	34	23	-4.17%
Undeclared	917	1,334	1,224	1,324	44.38%
Visual Communication Design					
2D Animation	10	20	21	16	60.00%
3D Animation	27	37	33	22	-18.52%
3D Modeling	.	.	1	10	.
Applied Multimedia Technology ¹	11	15	6	5	-54.55%
Graphic Arts Technology	.	.	15	21	.
Graphic Design	53	70	94	84	58.49%
Illustration	.	.	1	5	.
Interactive Design	7	12	8	18	157.14%
Prepress ¹	21	20	4	3	-85.71%
Web Specialization	12	18	14	15	25.00%
Welding Technology	1	2	2	0	-100.00%
Art Metals	20	26	20	36	80.00%
Inspection	9	18	15	19	111.11%
Jewelry Fabrication ¹	0	2	1	1	.
Metal Sculpture	16	16	16	17	6.25%
Pipe Welding	11	8	9	8	-27.27%
Plate Welding	16	13	20	23	43.75%
Ultrahigh Purity Piping	1	1	1	2	100.00%
TOTAL	4,650	5,847	5,895	6,634	42.67%

¹ Program is no longer active, but students already in the pipeline may be allowed to complete the degree plan.

NOTE: A "." means that the program did not exist that semester.

Source: Fall 12th Class Day Data

**Declared Majors
Fall 2006 - 2009**

Other

	Fall 2006	Fall 2007	Fall 2008	Fall 2009	06-09 % chg
No Major Data	128	0	0	214	67.19%
Pre-Nursing Mobility Track Prerequisites	144	122	22	4	-97.22%
Pre-Nursing Traditional Track Prerequisites	1,450	983	160	8	-99.45%
Pre-Sonography Prerequisites	140	82	14	1	-99.29%
Undeclared					
Intend to Transfer	2,503	1,921	999	830	-66.84%
Major Not Offered	322	327	285	377	17.08%
Non-Degree Seeking	303	274	226	210	-30.69%
Taking Courses for Self Improvement	390	335	322	636	63.08%
TOTAL	5,380	4,044	2,028	2,280	-57.62%

**Declared Majors Summary
Fall 2006 - 2009**

	Fall 2006	Fall 2007	Fall 2008	Fall 2009	06-09 % chg
Associates of Arts	8,491	8,200	9,130	9,536	12.31%
Associates of Arts in Teaching	417	884	1,284	1,692	305.76%
Associates of Science	6,080	6,046	6,885	7,735	27.22%
Associates of Applied Science	7,168	7,754	10,313	12,371	72.59%
Certificates	4,650	5,847	5,895	6,634	42.67%
Other	6,233	4,777	2,291	2,280	-63.42%
TOTAL	33,039	33,508	35,798	40,248	21.82%

**High School Concurrent Enrollment by School District
Fall 2005 - 2009**

School District	Headcount					05-09 % Chg
	Fall 2005	Fall 2006	Fall 2007	Fall 2008	Fall 2009	
Austin ISD	368	469	396	439	507	37.77%
Bastrop ISD	53	68	67	99	94	77.36%
Blanco ISD	26	22	15	21	25	-3.85%
Del Valle ISD	1	24	18	43	43	4200.00%
Dripping Springs ISD	69	42	51	92	66	-4.35%
Eanes ISD	36	36	22	21	18	-50.00%
Elgin ISD	9	17	17	44	12	33.33%
Fredericksburg ISD	32	34	36	49	38	18.75%
Georgetown ISD	140	146	129	158	191	36.43%
Harper ISD	28	31	32	20	29	3.57%
Hays CISD	65	78	95	122	132	103.08%
Jarrell ISD	43	34	18	34	45	4.65%
Johnson City ISD	14	12	14	14	14	0.00%
Lago Vista ISD	21	30	35	8	32	52.38%
Lake Travis ISD	61	86	79	79	95	55.74%
Leander ISD	165	200	285	288	309	87.27%
Liberty Hill ISD	72	89	97	96	110	52.78%
Lockhart ISD	123	126	140	157	165	34.15%
Luling ISD	45	29	40	48	15	-66.67%
Manor ISD	19	20	37	44	32	68.42%
Nixon-Smilely ISD	18	18	29	17	24	33.33%
Pflugerville ISD	58	65	53	121	198	241.38%
Prairie Lea ISD	1	1	4	1	0	-100.00%
Round Rock ISD	113	99	167	194	233	106.19%
San Marcos CISD	24	46	62	51	103	329.17%
Smithville ISD	5	5	5	4	2	-60.00%
Wimberley ISD	20	22	97	45	52	160.00%
Other ¹	269	361	376	441	490	82.16%
TOTAL	1,898	2,210	2,416	2,750	3,074	61.96%

¹ Other includes home-schooled students, students enrolled in private schools, and students with no high school identified.

NOTES: Concurrently enrolled students are enrolled in high school (as juniors and seniors) and in college. These students receive college credit and may receive high school graduation credit for the classes they take at ACC.

Source: Fall 12th Class Day Data

Student Characteristics
First-time in College Students
Fall 2005 - 2009

	Fall 2005		Fall 2006		Fall 2007		Fall 2008		Fall 2009		05-09 % chg
Student Headcount	3,880		4,565		4,283		4,859		5,435		40.08%
Residency											
In-District	2,595	66.9%	2,954	64.7%	2,736	63.9%	3,438	70.8%	3,922	72.2%	51.14%
Out-of-District	1,134	29.2%	1,427	31.3%	1,373	32.1%	1,228	25.3%	1,332	24.5%	17.46%
Out-of-State/International	116	3.0%	147	3.2%	121	2.8%	127	2.6%	139	2.6%	19.83%
Other/Unknown ¹	35	0.9%	37	0.8%	53	1.2%	66	1.4%	42	0.8%	20.00%
Gender											
Male	1,975	50.9%	2,263	49.6%	2,088	48.8%	2,463	50.7%	2,753	50.7%	39.39%
Female	1,905	49.1%	2,302	50.4%	2,195	51.2%	2,396	49.3%	2,682	49.3%	40.79%
Ethnicity											
White	2,104	54.2%	2,352	51.5%	2,335	54.5%	2,581	53.1%	2,738	50.4%	30.13%
Black	339	8.7%	412	9.0%	410	9.6%	416	8.6%	616	11.3%	81.71%
Hispanic	1,169	30.1%	1,451	31.8%	1,219	28.5%	1,504	31.0%	1,686	31.0%	44.23%
Asian/Pacific Islander	132	3.4%	162	3.5%	185	4.3%	243	5.0%	198	3.6%	50.00%
Am. Indian/Alaskan Native	36	0.9%	47	1.0%	48	1.1%	46	0.9%	37	0.7%	2.78%
Non-Resident Alien	61	1.6%	67	1.5%	48	1.1%	27	0.6%	59	1.1%	-3.28%
Other/Unknown	39	1.0%	74	1.6%	38	0.9%	42	0.9%	101	1.9%	158.97%
Age											
16 and Under	9	0.2%	14	0.3%	15	0.4%	9	0.2%	14	0.3%	55.56%
17	147	3.8%	161	3.5%	165	3.9%	143	2.9%	157	2.9%	6.80%
18	1,915	49.4%	2,142	46.9%	2,138	49.9%	2,376	48.9%	2,388	43.9%	24.70%
19-21	1,049	27.0%	1,240	27.2%	1,111	25.9%	1,249	25.7%	1,436	26.4%	36.89%
22-24	292	7.5%	341	7.5%	294	6.9%	338	7.0%	445	8.2%	52.40%
25-30	257	6.6%	339	7.4%	293	6.8%	375	7.7%	502	9.2%	95.33%
31-35	94	2.4%	143	3.1%	95	2.2%	162	3.3%	213	3.9%	126.60%
36-50	98	2.5%	165	3.6%	147	3.4%	176	3.6%	247	4.5%	152.04%
51-64	17	0.4%	18	0.4%	20	0.5%	30	0.6%	30	0.6%	76.47%
65 and over	2	0.1%	2	0.0%	2	0.0%	1	0.0%	2	0.0%	0.00%
Unknown	0	0.0%	0	0.0%	3	0.1%	0	0.0%	1	0.0%	.
Average Age	20.49	.	20.88	.	20.62	.	20.95	.	21.49	.	4.88%

¹ Other/Unknown includes students with tuition exemptions and waivers.

NOTE: First-time in college students have never attended college or any other postsecondary institution and are not reported as first-time-entering college until they have completed their high school work.

Source: Fall 12th Class Day Data

**Student Characteristics
Developmental Education - Reading
Fall 2006 - 2009**

	Fall 2006		Fall 2007		Fall 2008		Fall 2009		06-09 % Chg
Student Headcount	1,101		1,064		1,124		1,224		11.17%
Residency									
In-District	789	71.66%	716	67.29%	835	74.29%	933	76.23%	18.25%
Out-of-District	259	23.52%	306	28.76%	270	24.02%	261	21.32%	0.77%
Out-of-State/International	37	3.36%	32	3.01%	17	1.51%	30	2.45%	-18.92%
Other/Unknown ¹	16	1.45%	10	0.94%	2	0.18%	0	0.00%	-100.00%
Gender									
Male	457	41.51%	427	40.13%	447	39.77%	492	40.20%	7.66%
Female	644	58.49%	637	59.87%	677	60.23%	732	59.80%	13.66%
Student Status									
Part-time	1,043	94.73%	999	93.89%	1,067	94.93%	1,148	93.79%	10.07%
Full-time ²	58	5.27%	65	6.11%	57	5.07%	76	6.21%	31.03%
Ethnicity									
White	321	29.16%	312	29.32%	349	31.05%	316	25.82%	-1.56%
Black	218	19.80%	226	21.24%	223	19.84%	327	26.72%	50.00%
Hispanic	457	41.51%	425	39.94%	467	41.55%	492	40.20%	7.66%
Asian/Pacific Islander	51	4.63%	56	5.26%	50	4.45%	44	3.59%	-13.73%
Am. Indian/Alaskan Native	6	0.54%	11	1.03%	9	0.80%	6	0.49%	0.00%
Non-Resident Alien	27	2.45%	15	1.41%	5	0.44%	9	0.74%	-66.67%
Other/Unknown	21	1.91%	19	1.79%	21	1.87%	30	2.45%	42.86%
Age									
16 and Under	3	0.27%	2	0.19%	3	0.27%	0	0.00%	-100.00%
17	26	2.36%	24	2.26%	36	3.20%	21	1.72%	-19.23%
18	366	33.24%	383	36.00%	412	36.65%	391	31.94%	6.83%
19-21	400	36.33%	383	36.00%	386	34.34%	398	32.52%	-0.50%
22-24	110	9.99%	98	9.21%	98	8.72%	145	11.85%	31.82%
25-30	103	9.36%	77	7.24%	87	7.74%	119	9.72%	15.53%
31-35	35	3.18%	37	3.48%	41	3.65%	50	4.08%	42.86%
36-50	52	4.72%	53	4.98%	53	4.72%	86	7.03%	65.38%
51-64	5	0.45%	6	0.56%	8	0.71%	14	1.14%	180.00%
65 and over	1	0.09%	1	0.09%	0	0.00%	0	0.00%	-100.00%
Unknown	0	0.00%	0	0.00%	0	0.00%	0	0.00%	.
Average Age	21.63	.	21.57	.	21.48	.	22.68	.	4.85%

¹ Other/Unknown includes students with tuition exemptions and waivers.

² Full-time - 12 credit hours or more.

NOTE: Unduplicated headcount of students who were enrolled in at least one Developmental Writing course.

Source: Fall 12th Class Day Data

**Student Characteristics
Developmental Education - Writing
Fall 2006 - 2009**

	Fall 2006		Fall 2007		Fall 2008		Fall 2009		06-09 % Chg
Student Headcount	673		667		704		811		20.51%
Residency									
In-District	500	74.29%	464	69.57%	544	77.27%	620	76.45%	24.00%
Out-of-District	146	21.69%	182	27.29%	149	21.16%	177	21.82%	21.23%
Out-of-State/International	17	2.53%	18	2.70%	10	1.42%	12	1.48%	-29.41%
Other/Unknown ¹	10	1.49%	3	0.45%	1	0.14%	2	0.25%	-80.00%
Gender									
Male	335	49.78%	331	49.63%	344	48.86%	379	46.73%	13.13%
Female	338	50.22%	336	50.37%	360	51.14%	432	53.27%	27.81%
Student Status									
Part-time	606	90.04%	602	90.25%	652	92.61%	726	89.52%	19.80%
Full-time ²	67	9.96%	65	9.75%	52	7.39%	85	10.48%	26.87%
Ethnicity									
White	203	30.16%	220	32.98%	228	32.39%	237	29.22%	16.75%
Black	117	17.38%	131	19.64%	153	21.73%	202	24.91%	72.65%
Hispanic	291	43.24%	250	37.48%	291	41.34%	318	39.21%	9.28%
Asian/Pacific Islander	28	4.16%	32	4.80%	26	3.69%	20	2.47%	-28.57%
Am. Indian/Alaskan Native	4	0.59%	6	0.90%	1	0.14%	7	0.86%	75.00%
Non-Resident Alien	14	2.08%	12	1.80%	2	0.28%	6	0.74%	-57.14%
Other/Unknown	16	2.38%	16	2.40%	3	0.43%	21	2.59%	31.25%
Age									
16 and Under	1	0.15%	1	0.15%	0	0.00%	0	0.00%	-100.00%
17	10	1.49%	10	1.50%	15	2.13%	14	1.73%	40.00%
18	197	29.27%	191	28.64%	194	27.56%	191	23.55%	-3.05%
19-21	237	35.22%	237	35.53%	256	36.36%	300	36.99%	26.58%
22-24	83	12.33%	76	11.39%	72	10.23%	83	10.23%	0.00%
25-30	64	9.51%	54	8.10%	55	7.81%	74	9.12%	15.63%
31-35	26	3.86%	33	4.95%	35	4.97%	35	4.32%	34.62%
36-50	47	6.98%	51	7.65%	62	8.81%	93	11.47%	97.87%
51-64	8	1.19%	11	1.65%	15	2.13%	21	2.59%	162.50%
65 and over	0	0.00%	2	0.30%	0	0.00%	0	0.00%	.
Unknown	1	0.15%	1	0.15%	0	0.00%	0	0.00%	-100.00%
Average Age	22.67	.	23.22	.	23.40	.	24.26	.	7.01%

¹ Other/Unknown includes students with tuition exemptions and waivers.

² Full-time - 12 credit hours or more.

NOTE: Unduplicated headcount of students who were enrolled in at least one Developmental Writing course.

Source: Fall 12th Class Day Data

**Student Characteristics
Developmental Education - Math
Fall 2006 - 2009**

	Fall 2006		Fall 2007		Fall 2008		Fall 2009		06-09 % Chg
Student Headcount	6,765		6,690		7,109		7,774		14.92%
Residency									
In-District	4,760	70.36%	4,632	69.24%	5,400	75.96%	6,009	77.30%	26.24%
Out-of-District	1,771	26.18%	1,854	27.71%	1,518	21.35%	1,591	20.47%	-10.16%
Out-of-State/International	204	3.02%	169	2.53%	145	2.04%	150	1.93%	-26.47%
Other/Unknown ¹	30	0.44%	35	0.52%	46	0.65%	24	0.31%	-20.00%
Gender									
Male	2,816	41.63%	2,718	40.63%	2,973	41.82%	3,249	41.79%	15.38%
Female	3,949	58.37%	3,972	59.37%	4,136	58.18%	4,525	58.21%	14.59%
Student Status									
Part-time	4,571	67.57%	4,539	67.85%	4,980	70.05%	5,351	68.83%	17.06%
Full-time ²	2,194	32.43%	2,151	32.15%	2,129	29.95%	2,423	31.17%	10.44%
Ethnicity									
White	3,334	49.28%	3,375	50.45%	3,495	49.16%	3,713	47.76%	11.37%
Black	770	11.38%	817	12.21%	892	12.55%	1,113	14.32%	44.55%
Hispanic	2,231	32.98%	2,081	31.11%	2,293	32.25%	2,542	32.70%	13.94%
Asian/Pacific Islander	176	2.60%	220	3.29%	222	3.12%	182	2.34%	3.41%
Am. Indian/Alaskan Native	72	1.06%	61	0.91%	72	1.01%	66	0.85%	-8.33%
Non-Resident Alien	90	1.33%	65	0.97%	43	0.60%	45	0.58%	-50.00%
Other/Unknown	92	1.36%	71	1.06%	92	1.29%	113	1.45%	22.83%
Age									
16 and Under	13	0.19%	6	0.09%	4	0.06%	10	0.13%	-23.08%
17	85	1.26%	108	1.61%	82	1.15%	87	1.12%	2.35%
18	1,149	16.98%	1,225	18.31%	1,279	17.99%	1,229	15.81%	6.96%
19-21	2,435	35.99%	2,345	35.05%	2,462	34.63%	2,543	32.71%	4.44%
22-24	970	14.34%	975	14.57%	986	13.87%	1,106	14.23%	14.02%
25-30	1,107	16.36%	1,012	15.13%	1,141	16.05%	1,346	17.31%	21.59%
31-35	421	6.22%	427	6.38%	492	6.92%	610	7.85%	44.89%
36-50	519	7.67%	532	7.95%	561	7.89%	728	9.36%	40.27%
51-64	64	0.95%	51	0.76%	99	1.39%	113	1.45%	76.56%
65 and over	2	0.03%	7	0.10%	3	0.04%	2	0.03%	0.00%
Unknown	0	0.00%	2	0.03%	0	0.00%	0	0.00%	.
Average Age	23.85	.	23.82	.	24.11	.	24.76	.	3.82%

¹ Other/Unknown includes students with tuition exemptions and waivers.

² Full-time - 12 credit hours or more.

NOTE: Unduplicated headcount of students who were enrolled in at least one Developmental Math course.

Source: Fall 12th Class Day Data

**Student Characteristics
Developmental Education - Other¹
Fall 2006 - 2009**

	Fall 2006		Fall 2007		Fall 2008		Fall 2009		06-09 % Chg
Student Headcount	1,160		1,291		1,303		1,466		26.38%
Residency									
In-District	852	73.45%	893	69.17%	963	73.91%	1,098	74.90%	28.87%
Out-of-District	257	22.16%	340	26.34%	316	24.25%	325	22.17%	26.46%
Out-of-State/International	36	3.10%	35	2.71%	15	1.15%	37	2.52%	2.78%
Other/Unknown ²	15	1.29%	23	1.78%	9	0.69%	6	0.41%	-60.00%
Gender									
Male	511	44.05%	548	42.45%	587	45.05%	653	44.54%	27.79%
Female	649	55.95%	743	57.55%	716	54.95%	813	55.46%	25.27%
Student Status									
Part-time	959	82.67%	1,064	82.42%	1,073	82.35%	1,205	82.20%	25.65%
Full-time ³	201	17.33%	227	17.58%	230	17.65%	261	17.80%	29.85%
Ethnicity									
White	456	39.31%	472	36.56%	512	39.29%	549	37.45%	20.39%
Black	184	15.86%	223	17.27%	215	16.50%	310	21.15%	68.48%
Hispanic	435	37.50%	483	37.41%	495	37.99%	513	34.99%	17.93%
Asian/Pacific Islander	38	3.28%	45	3.49%	41	3.15%	39	2.66%	2.63%
Am. Indian/Alaskan Native	7	0.60%	17	1.32%	10	0.77%	10	0.68%	42.86%
Non-Resident Alien	24	2.07%	25	1.94%	10	0.77%	15	1.02%	-37.50%
Other/Unknown	16	1.38%	26	2.01%	20	1.53%	30	2.05%	87.50%
Age									
16 and Under	1	0.09%	1	0.08%	1	0.08%	0	0.00%	-100.00%
17	21	1.81%	28	2.17%	35	2.69%	25	1.71%	19.05%
18	327	28.19%	382	29.59%	396	30.39%	412	28.10%	25.99%
19-21	439	37.84%	487	37.72%	462	35.46%	533	36.36%	21.41%
22-24	137	11.81%	150	11.62%	129	9.90%	167	11.39%	21.90%
25-30	126	10.86%	126	9.76%	140	10.74%	159	10.85%	26.19%
31-35	46	3.97%	41	3.18%	68	5.22%	64	4.37%	39.13%
36-50	58	5.00%	66	5.11%	57	4.37%	86	5.87%	48.28%
51-64	5	0.43%	9	0.70%	15	1.15%	20	1.36%	300.00%
65 and over	0	0.00%	1	0.08%	0	0.00%	0	0.00%	.
Unknown	0	0.00%	0	0.00%	0	0.00%	0	0.00%	.
Average Age	22.06	.	22.03	.	22.15	.	22.70	.	2.90%

¹ Other includes human development and study skills.

² Other/Unknown includes students with tuition exemptions and waivers.

³ Full-time - 12 credit hours or more.

NOTE: Unduplicated headcount of students who were enrolled in at least one Developmental Other¹ course.

Source: Fall 12th Class Day Data

THIS PAGE INTENTIONALLY LEFT BLANK