

## Continuing Education

*This section can be used for finding:*

- *information on continuing education programs.*
- *which organizations offer service and training through community partnerships.*
- *demographic information on Continuing Education students.*
- *enrollment information on Continuing Education classes.*

### Contents

Overview .....	99
Academic Year Programs .....	100
Community Partnerships .....	100
Annual Headcount by Age .....	101
Annual Headcount by Gender .....	102
Annual Headcount by Ethnicity .....	103
Annual Headcount by Zip Code .....	104
Annual Headcount by Zip Code Map .....	109
Course Enrollment by Location .....	110
Course Enrollment by Program Area .....	111

### Useful Terms

**Headcount** - the number of students enrolled in one or more courses. This number may be duplicated or unduplicated.

**Enrollment** - the number of students enrolled in a course.



### Continuing Education Overview

Continuing Education programs at Austin Community College are conducted in the following areas:

Center for Teacher Certification provides training for those with a bachelor's degree and subject competency to become teachers in Texas. Candidates enter an internship as a first-year teacher and finish with a teaching certificate. Educator training is also available for professional development and additional certifications, training for instructional aides, online substitute teacher training, and childcare classes. A Department of Education grant provides bilingual teachers with online support for 3 years.

Community Programs provides a variety of programs offered to challenge the creative mind, increase and refine vocational skills, and develop individuals personally. Community Programs provides a wide range of programs that promote lifelong learning. The Home and Garden program was awarded a National Exemplary Program Award.

Interior Design Institute includes Floral Design, Landscape Design, and Horticulture programs are premier training for individuals wanting to enter the specific industries.

Institute of Language and Culture provides a variety of language classes are available which focus on speaking skills in a language.

Personal Enrichment provides other programs that include recreational courses, arts and crafts, photography, financial seminars, State Theatre classes, Assessment Test Prep and many more.

Customized Training provides a one-stop source to training solutions for business, industry, and governmental agencies. By collaborating with organizations to analyze learning needs, Customized Training will tailor educational experiences that will develop employee talent and improve performance. Programs are flexible, on target, convenient and a value-added resource, making Customized Training a partner in improved business results.

Workforce Development Center is designed to provide a wide range of training and educational opportunities for individuals getting started in the workplace, furthering their current careers, or working to meet licensure/certification requirements. The Center is made up of three Institutes that cover a wide range of industries.

Health Professions Institute provides entry-level training opportunities for individuals beginning their career in healthcare. The Health Professions Institute also provides continuing education opportunities for current healthcare professionals needing this education as part of their recertification, relicensure, and/or professional development.

High Technology Institute provides technology training through practical hands-on instruction for both new and experienced users. Courses range from computer fundamentals to web authoring, from software programming to AutoCAD training. The Technical Certification Programs include: Cisco, Oracle, Linux, CompTIA, Sun, Project Management, Microsoft, Video Game Development and more.

Business & Industry Institute provides training for those starting or transitioning to a new career, meeting professional continuing education requirements, or simply expanding upon their existing skills in a variety of industry specific program areas. Program areas include job entry training, business development, professional development, professional continuing education, and apprenticeship training.

**Source:** Office of Continuing Education

## **Continuing Education Academic Year 2006 Programs**

### **Alternative Teacher Certification**

- Substitute Teacher
- ParaEducator Institute
- Professional Development for Teachers

### **Community Programs**

- Acting
- Alcohol Servers Certification
- Arts and Crafts
- Assessment Test Preparation
- Building Construction
- Driving Safety
- ESL
- Financial Programs
- Floral Design
- Home and Gardens
- Horticulture and Landscaping
- Music
- Personal Enrichment
- Photography
- Sports and Recreation
- Summer Programs
- Trips and Tours
- Writing Institute

### **Customized Training**

- Contract Classes for Business, Industry, Organizations and Governmental Agencies

### **Workforce Development Center**

#### Health Professions Institute

- Advanced Certificates
- Allied Health Care Courses
- Basic Certificates (Entry-level)
- Distance Learning Courses
- Independent Study Courses
- Professional Continuing Health Care Education
- Special Certificates

### **Business & Industry Institute**

- Apprenticeship
- Business Development
- Career Advancement Courses
- Management and Supervision Courses
- Professional Continuing Education
- Truck Driving

### **High Technology Institute**

- AutoCAD Training
- Classroom and Online Courses
- Computer Applications
- Programming
- Project Management
- Technical Certifications
- Video Game Development
- Webmaster

## **Community Partnerships**

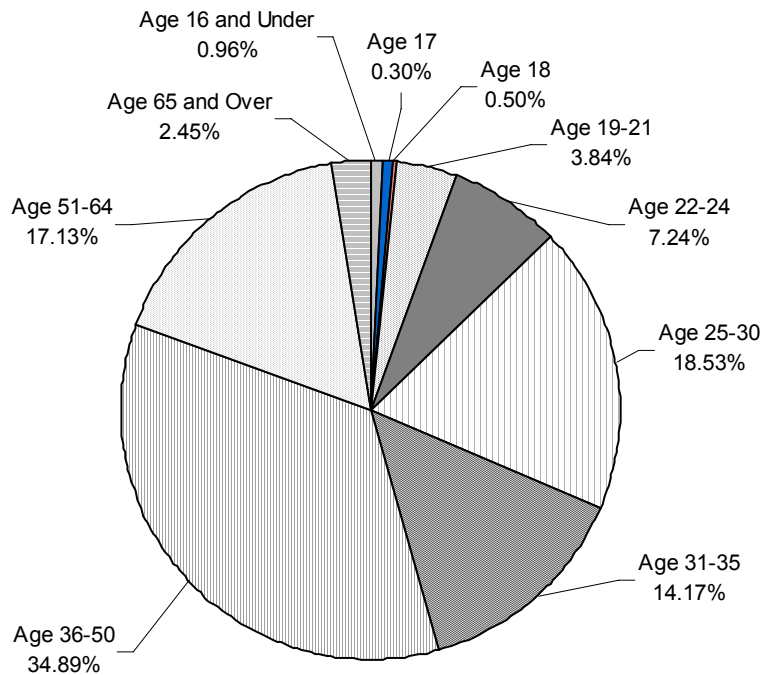
Continuing Education welcomes partnerships that provide service and training to the community. Examples of community partnerships currently in place are:

ACT Training Center  
American Heart Association  
Armstrong Community Music School of the Austin Lyric Opera  
Association of Contingency Planners  
Austin APICS  
Austin Information Systems Security Association  
Austin Project Management Institute  
Austin Travis County Mental Health and Mental Retardation  
Austin District Dental Hygienist's Society

Austin Chapter of the Texas Association of Addiction Professionals  
Bass Master University  
Entertech  
International Schools Professional Driver Training  
Localization Advisory Board  
Seton Healthcare Network  
State Theatre School of Acting  
St. David's Healthcare Partnership

**Source:** Office of Continuing Education

**Continuing Education  
Annual Headcount by Age  
Academic Year 2006**

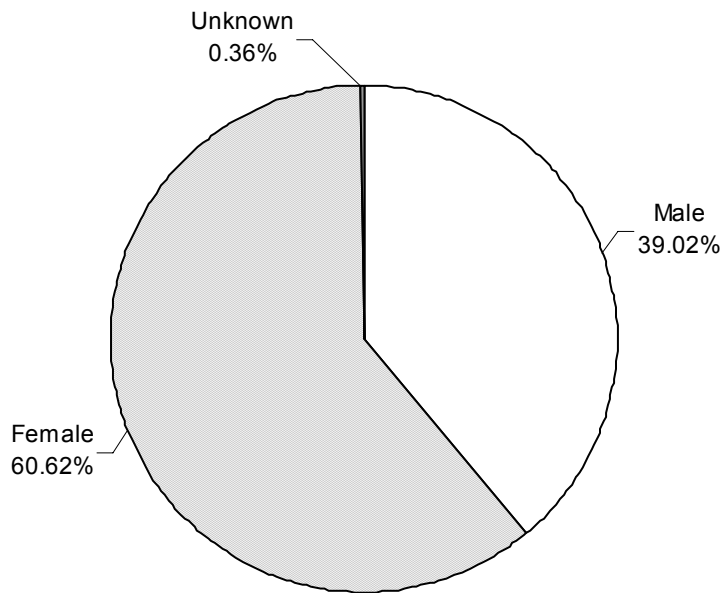


<b>Age</b>	<b>2005-06</b>	<b>Percent of Total</b>
16 and Under	95	0.96%
17	30	0.30%
18	49	0.50%
19-21	379	3.84%
22-24	715	7.24%
25-30	1,831	18.53%
31-35	1,400	14.17%
36-50	3,448	34.89%
51-64	1,693	17.13%
65 and Over	242	2.45%
<b>TOTAL</b>	<b>9,882</b>	<b>100.00%</b>

NOTE: Percents may not add to 100 due to rounding.

Source: Office of Institutional Effectiveness and Accountability

### Continuing Education Annual Headcount by Gender Academic Year 2006

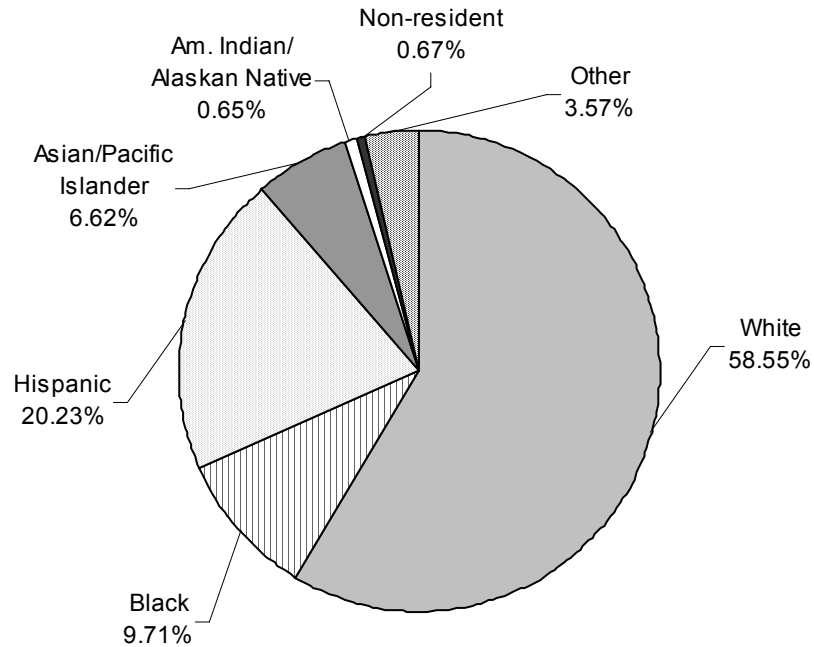


<b>Gender</b>	<b>2005-06</b>	<b>Percent of Total</b>
<b>Male</b>	3,856	39.02%
<b>Female</b>	5,990	60.62%
<b>Unknown</b>	36	0.36%
<b>TOTAL</b>	<b>9,882</b>	<b>100.00%</b>

NOTE: Percents may not add to 100 due to rounding.

Source: Office of Institutional Effectiveness and Accountability

**Continuing Education  
Annual Headcount by Ethnicity  
Academic Year 2006**



<b>Ethnicity</b>	<b>2005-06</b>	<b>Percent of Total</b>
<b>White</b>	5,786	58.55%
<b>Black</b>	960	9.71%
<b>Hispanic</b>	1,999	20.23%
<b>Asian/Pacific Islander</b>	654	6.62%
<b>Am. Indian/Alaskan Native</b>	64	0.65%
<b>Non-resident</b>	66	0.67%
<b>Other</b>	353	3.57%
<b>TOTAL</b>	<b>9,882</b>	<b>100.00%</b>

NOTE: Percents may not add to 100 due to rounding.

Source: Office of Institutional Effectiveness and Accountability

**Continuing Education  
Annual Headcount by Zip Code  
Academic Year 2002 - 2006**

<b>Region</b>	<b>Zip Code</b>	<b>2001-02</b>	<b>2002-03</b>	<b>2003-04</b>	<b>2004-05</b>	<b>2005-06</b>	<b>02-06 %chg</b>
<b>Austin, Central</b>							
Austin	78701	88	72	96	69	102	15.91%
Austin	78703	164	138	180	138	138	-15.85%
Austin	78705	174	141	124	106	111	-36.21%
Austin	78712	1	0	1	3	1	0.00%
Austin	78751	137	108	117	127	109	-20.44%
Austin	78752	120	120	143	116	106	-11.67%
Austin	78756	85	75	78	68	52	-38.82%
Austin	78757	249	214	239	234	218	-12.45%
<b>Total</b>		<b>1,018</b>	<b>868</b>	<b>978</b>	<b>861</b>	<b>837</b>	<b>-17.78%</b>
<b>%of Grand Total</b>		<b>9.88%</b>	<b>10.05%</b>	<b>9.37%</b>	<b>8.36%</b>	<b>8.47%</b>	
<b>Austin, East</b>							
Austin	78702	155	123	144	150	113	-27.10%
Austin	78721	53	61	64	60	58	9.43%
Austin	78722	69	57	71	53	51	-26.09%
Austin	78723	213	184	212	215	155	-27.23%
<b>Total</b>		<b>490</b>	<b>425</b>	<b>491</b>	<b>478</b>	<b>377</b>	<b>-23.06%</b>
<b>%of Grand Total</b>		<b>4.76%</b>	<b>4.92%</b>	<b>4.71%</b>	<b>4.64%</b>	<b>3.81%</b>	
<b>Austin, North</b>							
Austin	78727	238	250	296	275	307	28.99%
Austin	78728	152	91	119	187	127	-16.45%
Austin	78758	402	390	497	459	387	-3.73%
<b>Total</b>		<b>792</b>	<b>731</b>	<b>912</b>	<b>921</b>	<b>821</b>	<b>3.66%</b>
<b>%of Grand Total</b>		<b>7.69%</b>	<b>8.46%</b>	<b>8.74%</b>	<b>8.95%</b>	<b>8.31%</b>	
<b>Austin, Northwest</b>							
Austin	78726	44	46	77	77	67	52.27%
Austin	78730	32	30	33	34	37	15.63%
Austin	78731	270	213	233	245	227	-15.93%
Austin	78750	181	130	184	142	154	-14.92%
Austin	78759	415	408	459	446	468	12.77%
<b>Total</b>		<b>942</b>	<b>827</b>	<b>986</b>	<b>944</b>	<b>953</b>	<b>1.17%</b>
<b>%of Grand Total</b>		<b>9.14%</b>	<b>9.58%</b>	<b>9.45%</b>	<b>9.17%</b>	<b>9.64%</b>	

NOTE: Headcount is based on zip code data as reported and entered in the ACC database. Zip code regions are based on definitions developed by ACC administration.

Source: Office of Institutional Effectiveness and Accountability

**Continuing Education  
Annual Headcount by Zip Code (continued)  
Academic Year 2002 - 2006**

Region	Zip Code	2001-02	2002-03	2003-04	2004-05	2005-06	02-06 %chg
<b>Austin/Travis County, South</b>							
Manchaca	78652	23	29	21	23	14	-39.13%
Austin	78704	475	447	449	466	423	-10.95%
Austin	78745	470	431	508	484	454	-3.40%
Austin	78748	270	236	277	289	281	4.07%
<b>Total</b>		<b>1,238</b>	<b>1,143</b>	<b>1,255</b>	<b>1,262</b>	<b>1,172</b>	<b>-5.33%</b>
<b>% of Grand Total</b>		<b>12.02%</b>	<b>13.23%</b>	<b>12.03%</b>	<b>12.26%</b>	<b>11.86%</b>	
<b>Austin/Travis County, Southeast</b>							
Del Valle	78617	56	41	54	72	84	50.00%
Austin	78719	22	4	7	6	8	-63.64%
Austin	78741	279	249	271	294	294	5.38%
Austin	78742	7	2	5	9	7	0.00%
Austin	78744	204	152	193	221	223	9.31%
Austin	78747	36	55	72	1	54	50.00%
<b>Total</b>		<b>604</b>	<b>503</b>	<b>602</b>	<b>603</b>	<b>670</b>	<b>10.93%</b>
<b>% of Grand Total</b>		<b>5.86%</b>	<b>5.82%</b>	<b>5.77%</b>	<b>5.86%</b>	<b>6.78%</b>	
<b>Austin/Travis County, Southwest</b>							
Austin	78735	80	64	65	77	76	-5.00%
Austin	78736	56	55	43	61	61	8.93%
Austin	78739	60	45	67	60	79	31.67%
Austin	78746	170	117	129	117	160	-5.88%
Austin	78749	236	231	268	234	240	1.69%
<b>Total</b>		<b>602</b>	<b>512</b>	<b>572</b>	<b>549</b>	<b>616</b>	<b>2.33%</b>
<b>% of Grand Total</b>		<b>5.84%</b>	<b>5.93%</b>	<b>5.48%</b>	<b>5.33%</b>	<b>6.23%</b>	
<b>Bastrop County<sup>1</sup></b>							
Bastrop	78602	70	56	71	95	65	-7.14%
Cedar Creek	78612	45	34	38	51	35	-22.22%
Elgin	78621	86	53	60	68	54	-37.21%
McDade	78650	8	4	6	1	6	-25.00%
Paige	78659	13	7	8	11	5	-61.54%
Red Rock	78662	7	5	8	9	4	-42.86%
Rosanky	78953	2	2	3	2	1	-50.00%
Smithville	78957	29	20	28	35	27	-6.90%
<b>Total</b>		<b>260</b>	<b>181</b>	<b>222</b>	<b>272</b>	<b>197</b>	<b>-24.23%</b>
<b>% of Grand Total</b>		<b>2.52%</b>	<b>2.10%</b>	<b>2.13%</b>	<b>2.64%</b>	<b>1.99%</b>	

<sup>1</sup> These numbers do not represent total headcount for the county due to zip codes that span more than one county.

NOTE: Headcount is based on zip code data as reported and entered in the ACC database. Zip code regions are based on definitions developed by ACC administration.

Source: Office of Institutional Effectiveness and Accountability

**Continuing Education  
Annual Headcount by Zip Code (continued)  
Academic Year 2002 - 2006**

Region	Zip Code	2001-02	2002-03	2003-04	2004-05	2005-06	02-06 %chg
<b>Blanco County<sup>1</sup></b>							
Blanco	78606	9	7	7	9	2	-77.78%
Hye	78635	2	0	0	0	0	-100.00%
Johnson City	78636	10	7	6	3	3	-70.00%
Round Mountain	78663	0	0	0	0	2	.
<b>Total</b>		<b>21</b>	<b>14</b>	<b>13</b>	<b>12</b>	<b>7</b>	<b>-66.67%</b>
<b>%of Grand Total</b>		<b>0.20%</b>	<b>0.16%</b>	<b>0.12%</b>	<b>0.12%</b>	<b>0.07%</b>	
<b>Burnet County<sup>1</sup></b>							
Bertram	78605	13	5	5	17	9	-30.77%
Briggs	78608	0	0	0	0	1	.
Burnet	78611	17	19	14	11	15	-11.76%
Marble Falls	78654	28	10	23	22	23	-17.86%
<b>Total</b>		<b>58</b>	<b>34</b>	<b>42</b>	<b>50</b>	<b>48</b>	<b>-17.24%</b>
<b>%of Grand Total</b>		<b>0.56%</b>	<b>0.39%</b>	<b>0.40%</b>	<b>0.49%</b>	<b>0.49%</b>	
<b>Caldwell County<sup>1</sup></b>							
Dale	78616	21	14	16	20	14	-33.33%
Lockhart	78644	75	22	33	40	33	-56.00%
Luling	78648	9	19	6	4	5	-44.44%
Martindale	78655	9	2	7	2	3	-66.67%
Maxwell	78656	8	3	8	5	1	-87.50%
<b>Total</b>		<b>122</b>	<b>60</b>	<b>70</b>	<b>71</b>	<b>56</b>	<b>-54.10%</b>
<b>%of Grand Total</b>		<b>1.18%</b>	<b>0.69%</b>	<b>0.67%</b>	<b>0.69%</b>	<b>0.57%</b>	
<b>Cedar Park/Leander</b>							
Cedar Park	78613	330	324	425	429	409	23.94%
Leander	78641	149	163	222	252	246	65.10%
Liberty Hill	78642	33	30	27	24	20	-39.39%
<b>Total</b>		<b>512</b>	<b>517</b>	<b>674</b>	<b>705</b>	<b>675</b>	<b>31.84%</b>
<b>%of Grand Total</b>		<b>4.97%</b>	<b>5.99%</b>	<b>6.46%</b>	<b>6.85%</b>	<b>6.83%</b>	

<sup>1</sup> These numbers do not represent total headcount for the county due to zip codes that span more than one county.

NOTE: Headcount is based on zip code data as reported and entered in the ACC database. Zip code regions are based on definitions developed by ACC administration.

Source: Office of Institutional Effectiveness and Accountability

**Continuing Education  
Annual Headcount by Zip Code (continued)  
Academic Year 2002 - 2006**

<b>Region</b>	<b>Zip Code</b>	<b>2001-02</b>	<b>2002-03</b>	<b>2003-04</b>	<b>2004-05</b>	<b>2005-06</b>	<b>02-06 %chg</b>
<b>Georgetown/North Williamson County</b>							
Florence	76527	14	6	16	12	9	-35.71%
Granger	76530	6	6	17	11	6	0.00%
Jarrell	76537	7	6	15	6	5	-28.57%
Georgetown	78626	91	93	111	83	68	-25.27%
Georgetown	78628	126	149	185	116	109	-13.49%
<b>Total</b>		<b>244</b>	<b>260</b>	<b>344</b>	<b>228</b>	<b>197</b>	<b>-19.26%</b>
<b>% of Grand Total</b>		<b>2.37%</b>	<b>3.01%</b>	<b>3.30%</b>	<b>2.21%</b>	<b>1.99%</b>	
<b>Gillespie County<sup>1</sup></b>							
Doss	78618	1	0	0	0	0	-100.00%
Fredericksburg	78624	15	21	11	12	12	-20.00%
Harper	78631	0	0	0	0	1	.
Stonewall	78671	1	1	0	0	1	0.00%
<b>Total</b>		<b>17</b>	<b>22</b>	<b>11</b>	<b>12</b>	<b>12</b>	<b>-29.41%</b>
<b>% of Grand Total</b>		<b>0.17%</b>	<b>0.25%</b>	<b>0.11%</b>	<b>0.12%</b>	<b>0.12%</b>	
<b>Hays County<sup>1</sup></b>							
Buda	78610	69	45	58	51	65	-5.80%
Driftwood	78619	11	7	8	7	9	-18.18%
Dripping Springs	78620	58	40	54	43	37	-36.21%
Kyle	78640	67	68	79	106	107	59.70%
San Marcos	78666	106	107	119	98	88	-16.98%
Wimberley	78676	28	40	30	29	24	-14.29%
Austin	78737	46	45	47	37	59	28.26%
<b>Total</b>		<b>385</b>	<b>352</b>	<b>395</b>	<b>371</b>	<b>389</b>	<b>1.04%</b>
<b>% of Grand Total</b>		<b>3.74%</b>	<b>4.08%</b>	<b>3.79%</b>	<b>3.60%</b>	<b>3.94%</b>	
<b>Manor/East Travis County</b>							
Manor	78653	52	47	61	94	86	65.38%
Austin	78724	78	65	106	89	72	-7.69%
Austin	78725	31	24	26	25	20	-35.48%
<b>Total</b>		<b>161</b>	<b>136</b>	<b>193</b>	<b>208</b>	<b>178</b>	<b>10.56%</b>
<b>% of Grand Total</b>		<b>1.56%</b>	<b>1.57%</b>	<b>1.85%</b>	<b>2.02%</b>	<b>1.80%</b>	

<sup>1</sup> These numbers do not represent total headcount for the county due to zip codes that span more than one county.

NOTE: Headcount is based on zip code data as reported and entered in the ACC database. Zip code regions are based on definitions developed by ACC administration.

Source: Office of Institutional Effectiveness and Accountability

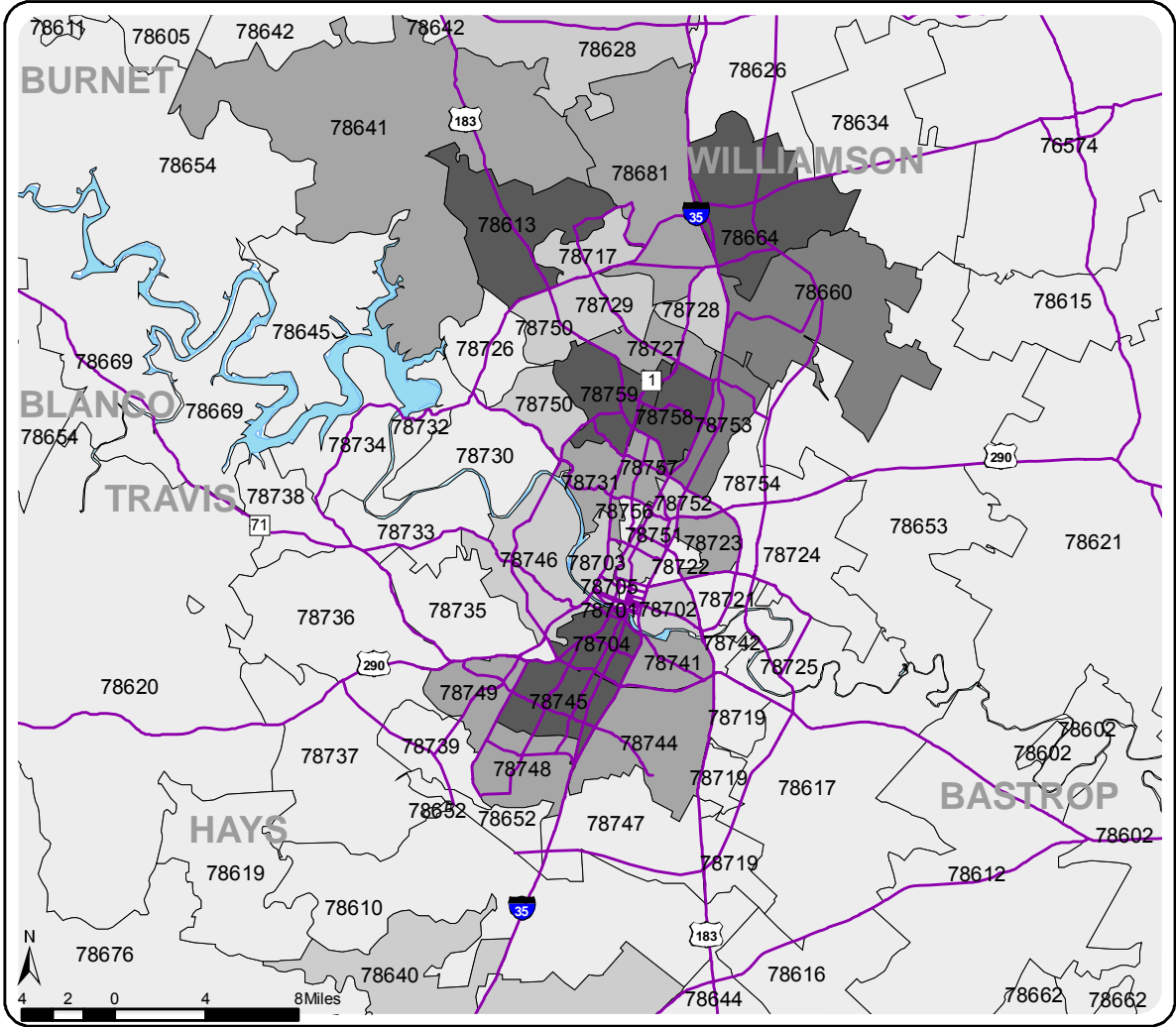
**Continuing Education  
Annual Headcount by Zip Code (continued)  
Academic Year 2002 - 2006**

Region	Zip Code	2001-02	2002-03	2003-04	2004-05	2005-06	02-06 %chg
<b>Pflugerville/Northeast Travis County</b>							
Pflugerville	78660	225	177	241	305	284	26.22%
Austin	78753	361	319	424	391	358	-0.83%
Austin	78754	59	60	81	79	98	66.10%
<b>Total</b>		<b>645</b>	<b>556</b>	<b>746</b>	<b>775</b>	<b>740</b>	<b>14.73%</b>
<b>%of Grand Total</b>		<b>6.26%</b>	<b>6.44%</b>	<b>7.15%</b>	<b>7.53%</b>	<b>7.49%</b>	
<b>Round Rock</b>							
Round Rock	78664	373	272	439	411	412	10.46%
Round Rock	78681	199	150	192	202	209	5.03%
Austin	78717	41	39	68	102	71	73.17%
Austin	78729	166	119	168	177	167	0.60%
<b>Total</b>		<b>779</b>	<b>580</b>	<b>867</b>	<b>892</b>	<b>859</b>	<b>10.27%</b>
<b>%of Grand Total</b>		<b>7.56%</b>	<b>6.72%</b>	<b>8.31%</b>	<b>8.66%</b>	<b>8.69%</b>	
<b>Taylor/Hutto/East Williamson County</b>							
Taylor	76574	64	35	56	57	32	-50.00%
Thrall	76578	5	2	4	4	6	20.00%
Coupland	78615	5	2	3	5	4	-20.00%
Hutto	78634	29	25	55	55	56	93.10%
<b>Total</b>		<b>103</b>	<b>64</b>	<b>118</b>	<b>121</b>	<b>98</b>	<b>-4.85%</b>
<b>%of Grand Total</b>		<b>1.00%</b>	<b>0.74%</b>	<b>1.13%</b>	<b>1.18%</b>	<b>0.99%</b>	
<b>West Travis County</b>							
Leander	78645	60	46	77	53	59	-1.67%
Spicewood	78669	44	11	24	13	19	-56.82%
Austin	78732	19	26	30	30	27	42.11%
Austin	78733	30	22	27	25	27	-10.00%
Austin	78734	78	38	46	60	75	-3.85%
Austin	78738	20	18	18	27	30	50.00%
<b>Total</b>		<b>251</b>	<b>161</b>	<b>222</b>	<b>208</b>	<b>237</b>	<b>-5.58%</b>
<b>%of Grand Total</b>		<b>2.44%</b>	<b>1.86%</b>	<b>2.13%</b>	<b>2.02%</b>	<b>2.40%</b>	
<b>Other/Unknown</b>		<b>1,057</b>	<b>691</b>	<b>722</b>	<b>752</b>	<b>745</b>	<b>-29.52%</b>
<b>%of Grand Total</b>		<b>10.26%</b>	<b>8.00%</b>	<b>6.92%</b>	<b>7.30%</b>	<b>7.54%</b>	
<b>Grand Total</b>		<b>10,301</b>	<b>8,637</b>	<b>10,435</b>	<b>10,295</b>	<b>9,884</b>	<b>-4.05%</b>

NOTE: Headcount is based on zip code data as reported and entered in the ACC database. Zip code regions are based on definitions developed by ACC administration.

Source: Office of Institutional Effectiveness and Accountability

### Continuing Education Annual Headcount by Zip Code Map Academic Year 2006



NOTE: Headcount is based on zip code data as reported and entered in the ACC database.

Source: Office of Institutional Effectiveness and Accountability

**Continuing Education  
Course Enrollment by Location  
Academic Year 2006**

<b>Location</b>	<b>2005-06</b>	<b>Percent</b>
Art Glass Fusing Center	96	0.59%
Austin Police Department	290	1.78%
Austin Recreation Center	56	0.34%
Carpenters Hall (JATC) <sup>1</sup>	50	0.31%
Children's Courtyard	6	0.04%
Clifton Career Dev School	2	0.01%
Cypress Creek Campus	233	1.43%
Dance International	23	0.14%
Decola & Eusebi Studio	9	0.06%
Eastview Campus	1,105	6.79%
Georgetown High School	187	1.15%
Georgetown Wesleyan Nursing	14	0.09%
Golden Vista Equestrian Center	37	0.23%
Govalle Care Center	61	0.37%
Harper-Chesser Historic Inn	8	0.05%
Highland Business Center	10,574	64.99%
Image Stained Glass Studio	5	0.03%
Iron Workers (JATC) <sup>1</sup>	216	1.33%
Northridge Campus	804	4.94%
Off-site	3	0.02%
Open Campus	29	0.18%
Pinnacle Campus	136	0.84%
Reagan High School	16	0.10%
Rio Grande Campus	374	2.30%
Riverside Campus	915	5.62%
Rock About	2	0.01%
Round Rock Higher Education Center	40	0.25%
Sheet Metal Workers (JATC) <sup>1</sup>	53	0.33%
State Theater School Acting	405	2.49%
Stonebridge Health Center	26	0.16%
Texas Rowing Center	32	0.20%
Town Lake Animal Shelter	34	0.21%
Travis High School	15	0.09%
University of Texas	7	0.04%
Williamson County Workforce	325	2.00%
YMCA East Communities	49	0.30%
YMCA Northpark	33	0.20%
<b>TOTAL</b>	<b>16,270</b>	<b>100.00%</b>

<sup>1</sup> JATC is an abbreviation for Joint Apprenticeship and Training Committees.

NOTE: Students who enroll in more than one course are counted once for each course. Percents may not add to 100 due to rounding.

Source: Office of Institutional Effectiveness and Accountability

**Continuing Education  
Course Enrollment by Program Area  
Academic Year 2006**

<b>Program Area</b>	<b>2005-06</b>	<b>Percent of Total</b>
Apprenticeship	313	1.92%
Business & Industry	2,832	17.41%
Career Advancement	158	0.97%
Community Programs	3,717	22.85%
Computer Applications	1,824	11.21%
Contract Training	1,762	10.83%
Health Professions Institute	3,832	23.55%
High-Tech Certification	756	4.65%
Independent Study	109	0.67%
Non Profit	35	0.22%
Teacher Certification	437	2.69%
Truck Driving	495	3.04%
<b>TOTAL</b>	<b>16,270</b>	<b>100.00%</b>

NOTE: Students who enroll in more than one course are counted once for each course. Percents may not add to 100 due to rounding.

Source: Office of Institutional Effectiveness and Accountability