

Approved Applications

The **Approved Applications** menu lists all approved applications in your purview.

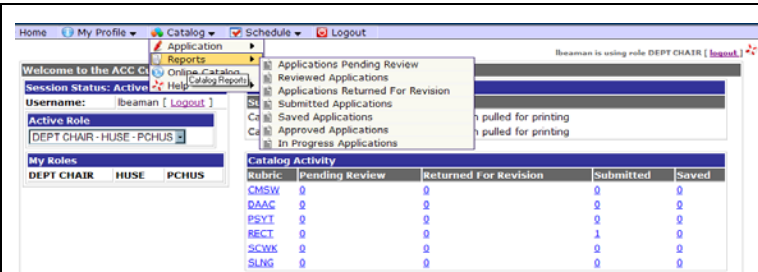


Figure 46 – Select Approved Applications

1. Select **Approved Applications** from the **Report** drop down menu.

The screenshot shows the 'Approved Applications' report table. The table lists various applications with their IDs, types, summaries, statuses, submission dates, and last activity dates. Each row includes a 'View' link for further details.

ID	Type	Summary	Status	Submitted	Last Activity	Action
655	MODIFY	DAAC-2341 will be modified	CS - RECONCILIATION ERROR	7/27/2006 12:19:56 PM	8/28/2006 11:58:39 AM	[View]
691	MODIFY	PSYT-1313 will be modified	CS - FULL APPROVAL	7/27/2006 4:01:15 PM	8/28/2006 11:59:29 AM	[View]
692	MODIFY	PSYT-1345 will be modified	CS - FULL APPROVAL	7/27/2006 4:02:18 PM	8/28/2006 11:59:36 AM	[View]
693	MODIFY	PSYT-1394 will be modified	CS - FULL APPROVAL	7/27/2006 4:03:22 PM	8/28/2006 11:59:43 AM	[View]
694	MODIFY	PSYT-2339 will be modified	CS - FULL APPROVAL	7/27/2006 4:04:43 PM	8/28/2006 11:59:49 AM	[View]
695	MODIFY	RECT-1301 will be modified	CS - FULL APPROVAL	7/27/2006 4:12:37 PM	8/28/2006 11:59:56 AM	[View]
696	MODIFY	RECT-1341 will be modified	CS - FULL APPROVAL	7/27/2006 4:13:47 PM	8/28/2006 12:00:03 PM	[View]
697	MODIFY	RECT-1342 will be modified	CS - FULL APPROVAL	7/27/2006 4:14:43 PM	8/28/2006 12:00:10 PM	[View]
711	MODIFY	RECT-2431 will be modified	CS - FULL APPROVAL	7/27/2006 4:46:57 PM	8/28/2006 12:07:56 PM	[View]
713	MODIFY	SCWK-1301 will be modified	CS - FULL APPROVAL	7/27/2006 4:48:37 PM	8/28/2006 12:08:14 PM	[View]
714	MODIFY	SCWK-1305 will be modified	CS - FULL APPROVAL	7/27/2006 4:49:35 PM	8/28/2006 12:08:21 PM	[View]
716	MODIFY	SCWK-1309 will be modified	CS - FULL APPROVAL	7/27/2006 4:50:25 PM	8/28/2006 12:08:33 PM	[View]
717	MODIFY	SCWK-1321 will be modified	CS - FULL APPROVAL	7/27/2006 4:51:33 PM	8/28/2006 12:08:39 PM	[View]

Figure 47 – Approved Applications

2. The screen will list all applications that have been approved with the current status and activity date. The user may view any application by selecting the **View** link. These applications will appear in the online catalog/schedule when they have a status of "Closed."

In Progress Applications

The **In Progress Applications** menu lists all applications in your purview.

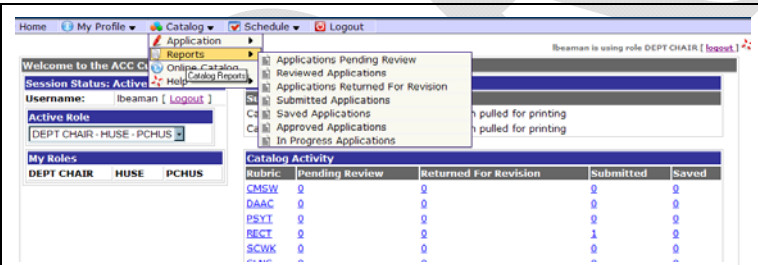


Figure 48 – Select In Progress Applications

1. Select **In Progress Applications** from the **Report** drop down menu.

The screenshot shows the 'In Progress Applications' report table. The table lists various applications with their IDs, types, summaries, statuses, submission dates, and last activity dates. Each row includes a 'View' link for further details.

ID	Type	Summary	Status	Submitted	Last Activity	Action
1326	EXPIRE	RECT-1341 will be expired (207U000).	DEAN - APPROVED	12/21/2006 9:21:33 AM	12/21/2006 11:41:50 AM	[View]
1327	NEW	SLNG-1240 will be created	DEAN - RETURN FOR REVISION	12/21/2006 9:35:15 AM	12/21/2006 11:40:54 AM	[View]
1328	NEW	SLNG-1206 will be created	DEAN - EXECUTIVE REJECTION	12/21/2006 9:38:36 AM	12/21/2006 11:39:46 AM	[View]
1329	NEW	CMSW-1319 will be created	DEAN - RETURN FOR REVISION	12/21/2006 9:43:56 AM	12/21/2006 11:38:36 AM	[View]
1330	NEW	CMSW-1309 will be created	DEAN - APPROVED	12/21/2006 9:47:21 AM	12/21/2006 11:44:10 AM	[View]
1331	NEW	SLNG-1246 will be created	DEAN - RETURN FOR REVISION	12/21/2006 10:26:07 AM	12/21/2006 11:43:17 AM	[View]

Figure 49 – In Progress Applications

2. This report will show the status of all applications and the applications progress through the approval chain.
3. The user may view the application but may not make further changes.