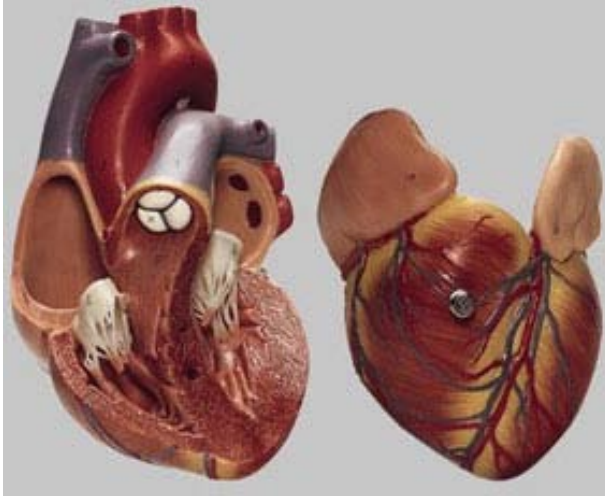


C1 – Heart Model



- A. apex
- B. interventricular septum

- I. right atrium
- II. left atrium
 - a. right atrium appendage
 - b. left atrium appendage
- III. right ventricle
- IV. left ventricle

- c. superior vena cava
- d. inferior vena cava
- e. tricuspid valve (aka. right AV valve)
- f. pulmonary trunk
- g. pulmonary veins
- h. bicuspid valve (aka. mitral valve or left AV valve)
- i. aorta
- k. semilunar valves (aka. SL valves)

- 1. tendinous cord
- 2. papillary muscle
- 3. ascending branch of the aorta
- 4. right coronary artery
- 5. left coronary artery
- 6. coronary vein
- 7. aortic arch