

## C2 – Heart/Lungs Model



### Heart, Major Vessels and Pulmonary Vessels

1. heart
2. coronary arteries
3. pericardium
4. diaphragm
5. right atrium
6. left atrium
7. ascending aorta
8. aortic arch
9. thoracic aorta
10. brachiocephalic trunk
11. common carotid arteries
12. subclavian artery
13. superior vena cava
14. internal jugular vein
15. subclavian vein
16. azygos vein
17. pulmonary trunk
18. right pulmonary artery
19. anterior trunk
20. apical artery
21. anterior artery
22. posterior ascending artery
23. middle lobe artery
24. apical (superior) segmental artery
25. common lower lobe artery
26. right upper pulmonary vein
27. apical vein
28. anterior vein
29. posterior vein
30. middle lobe vein
31. lateral segmental vein
32. medial segmental vein
33. right lower pulmonary vein
34. apical (superior) vein
35. common basal vein
36. left pulmonary artery
37. anterior artery

38. apical artery
39. lingular artery
40. superior segmental artery
41. inferior segmental artery
42. common basal artery
43. apical (superior) artery
44. left upper pulmonary vein
45. apicoposterior vein
46. infrasegmental vein
47. anterior segmental vein
48. lingular vein
49. left lower pulmonary vein
50. common basal vein
51. apical (superior) segmental vein

### TRACHEOBRONCHIAL SYSTEM

- I. trachea
- II. main bifurcation
- III. main carina
- IV. left main bronchus
- V. right main bronchus
- VI. bronchus intermedius

### Segmental Anatomy, Left Lung

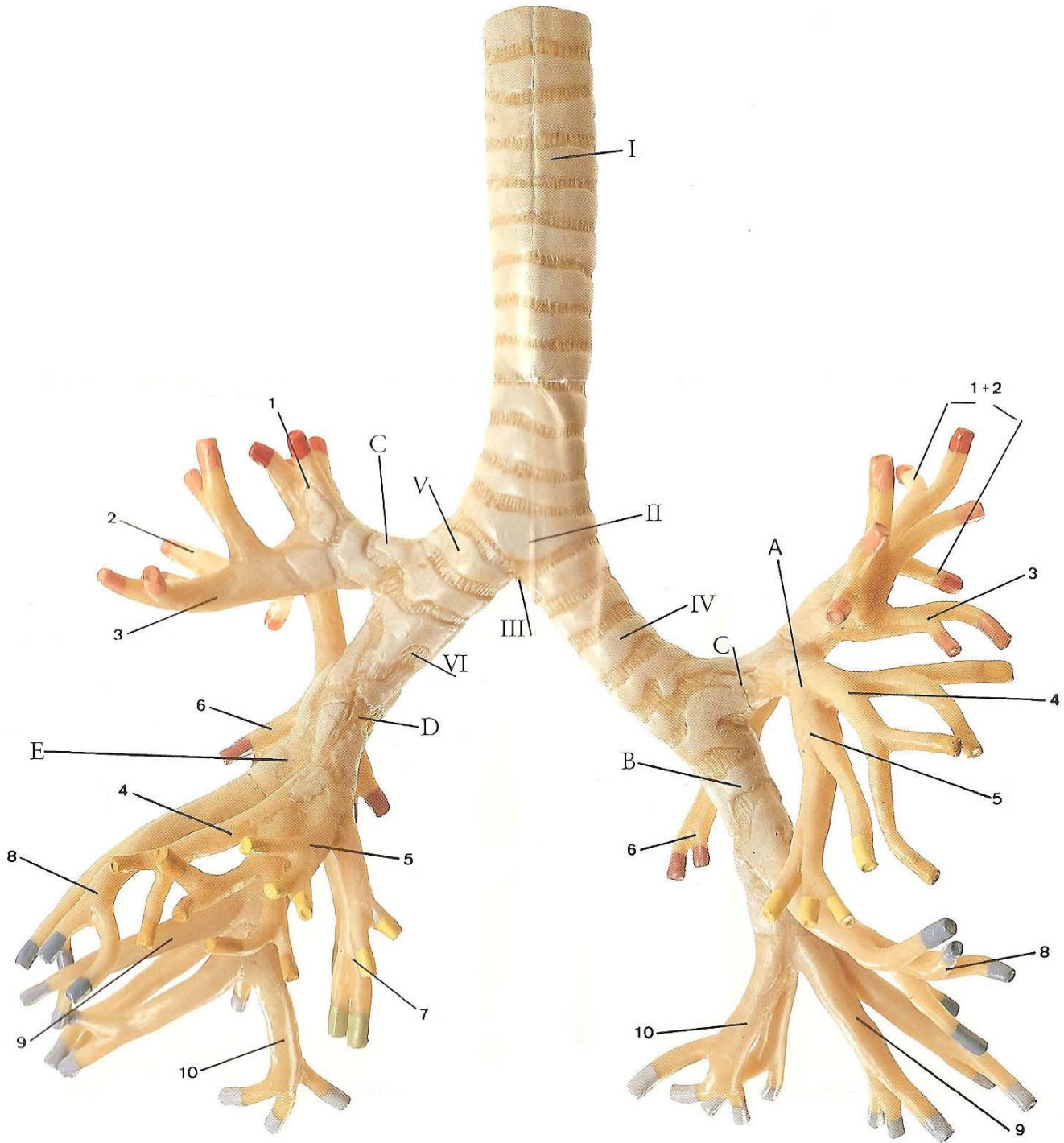
(numbers correspond to segments)

- 1 + 2. apicoposterior upper lobe segment
3. anterior upper lobe segment
  - a. lingular bronchus
4. upper lingular segment
5. lower lingular segment
  - b. left lower lobe bronchus
6. apical (superior) lower lobe segment
8. anterobasal lower lobe segment
9. laterobasal lower lobe segment
10. dorsobasal lower lobe

### Segmental Anatomy, Right Lung

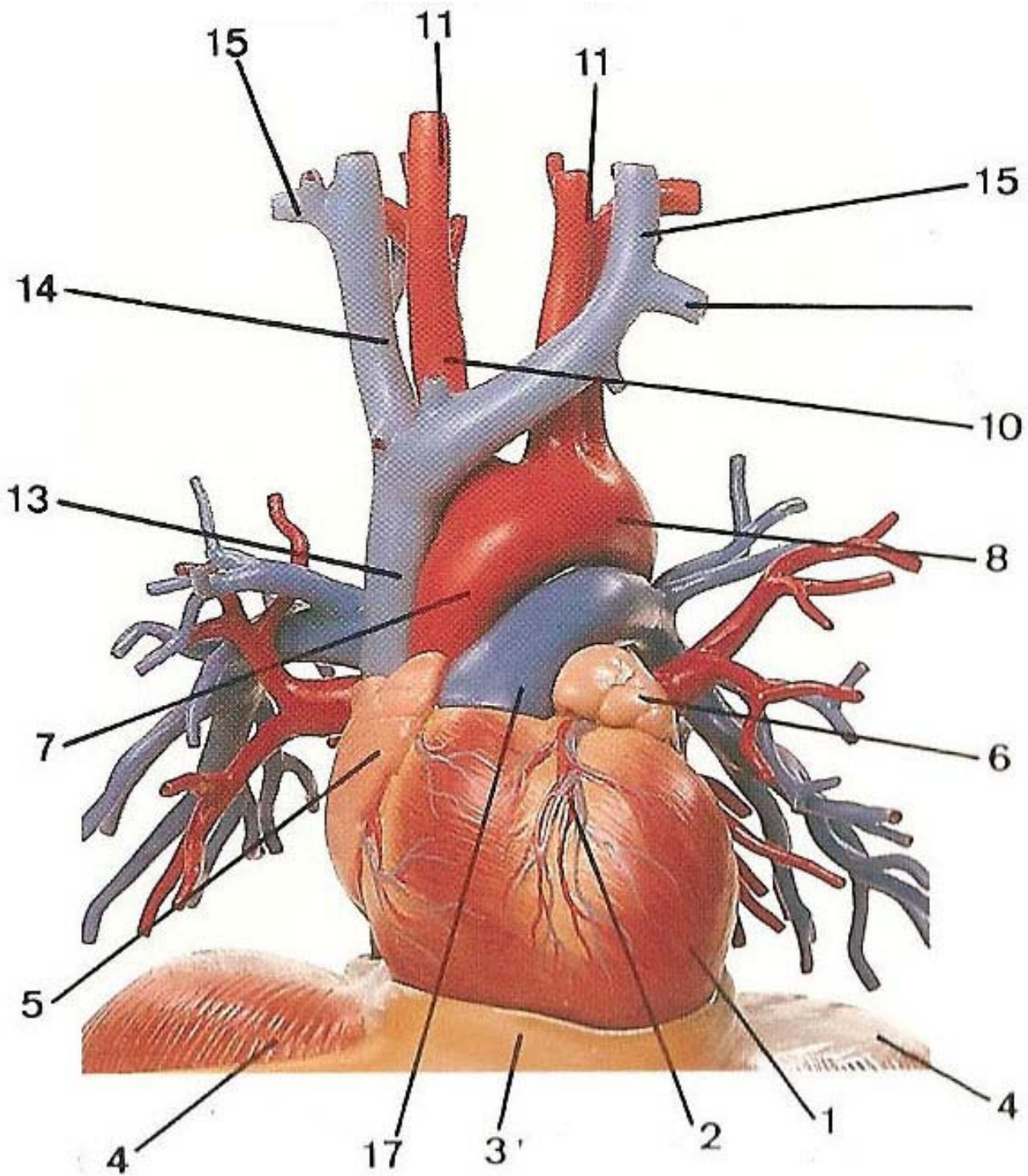
- C. right upper lobe bronchus
  1. apical upper lobe segment
  2. posterior upper lobe segment
  3. anterior upper lobe segment
- d. middle lobe bronchus
  4. lateral segment
  5. medial segment
- e. right lower lobe bronchus
  6. apical (superior) lower lobe segment
  7. cardiac segment
  8. anterobasal lower lobe segment
  9. laterobasal lower lobe segment
  10. dorsobasal lower lobe segment

# C2 – Heart/Lungs Model



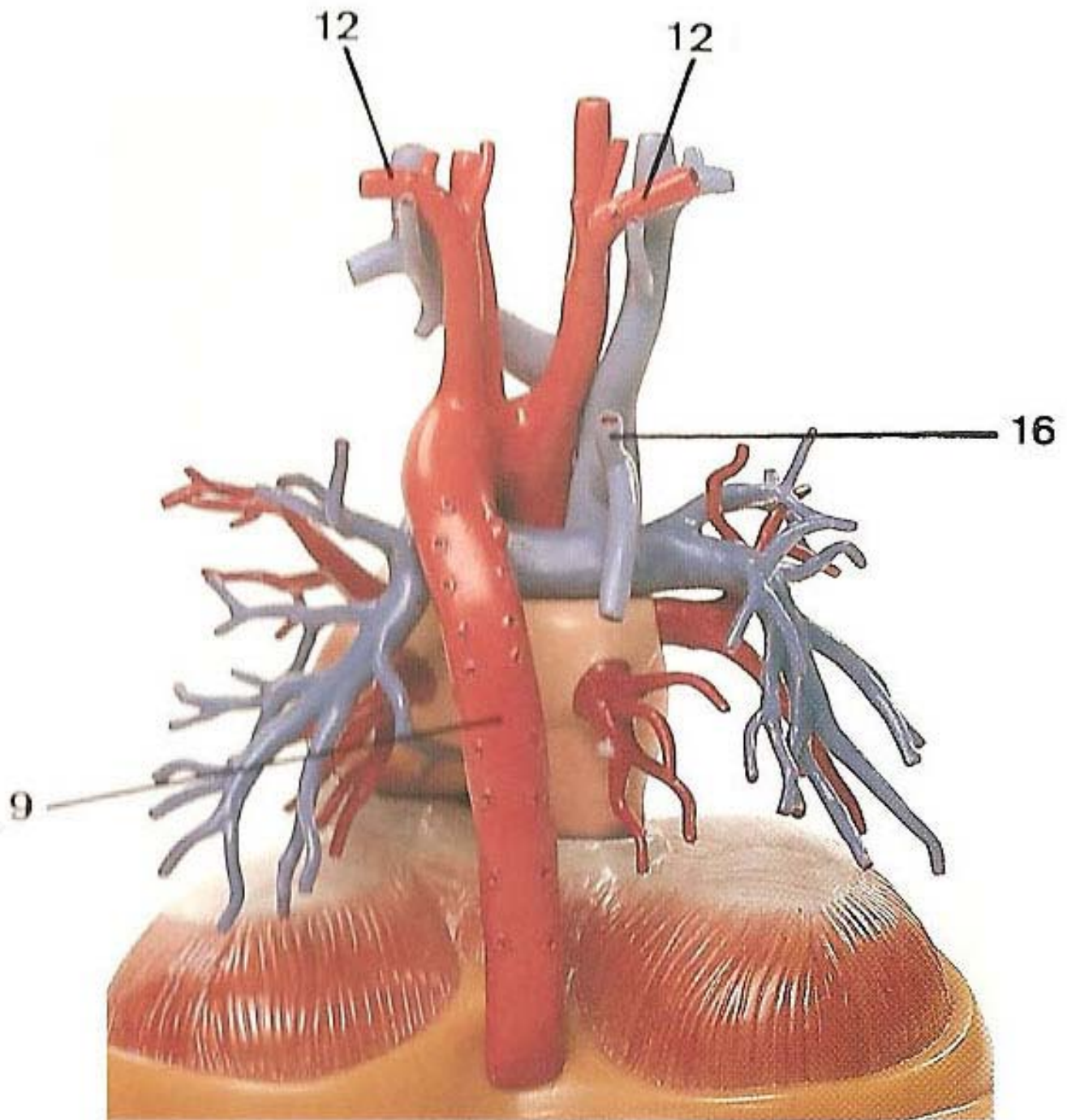
**Tracheobronchial System**

## C2 – Heart/Lungs Model



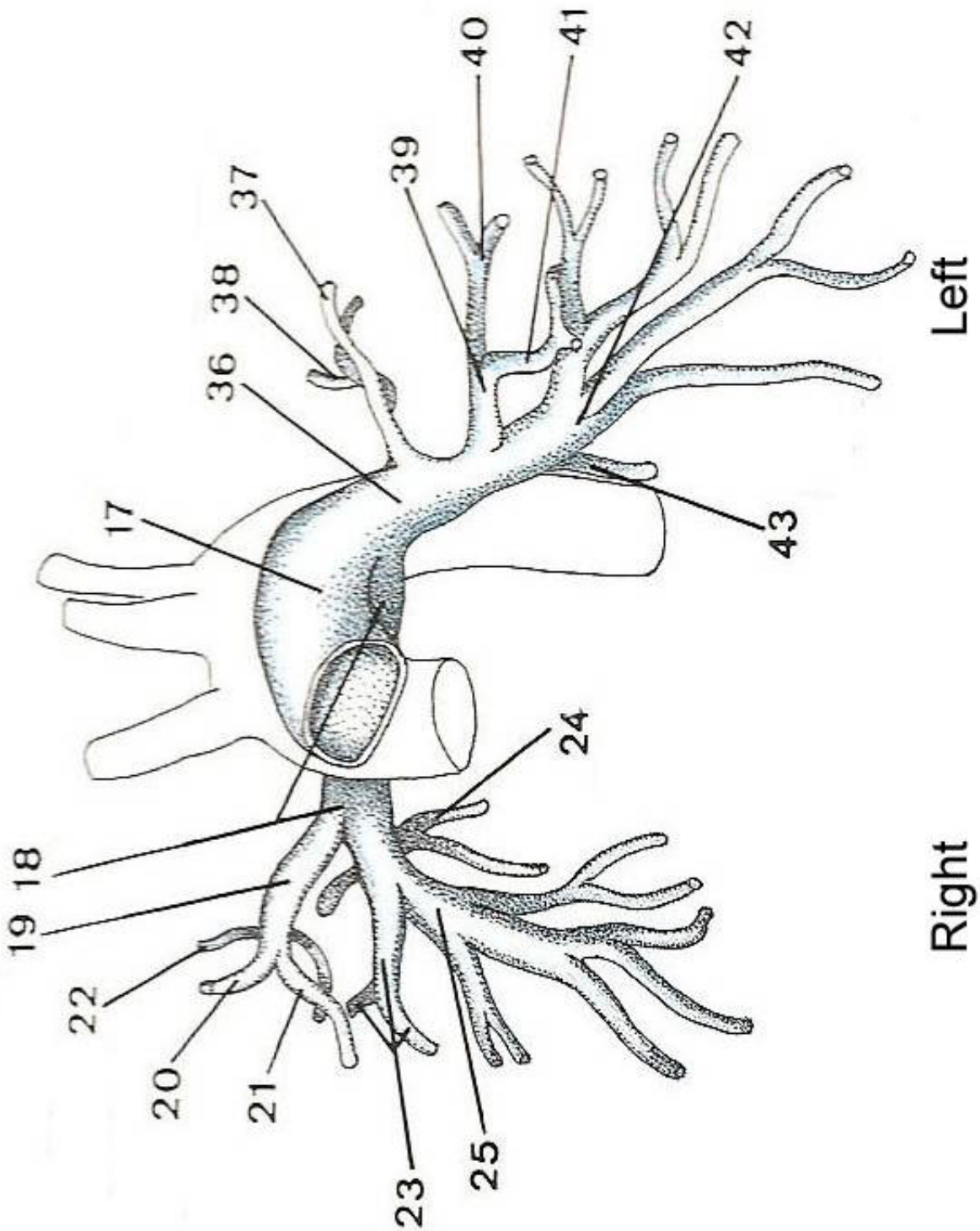
**Heart (front view)**

## C2 – Heart/Lungs Model



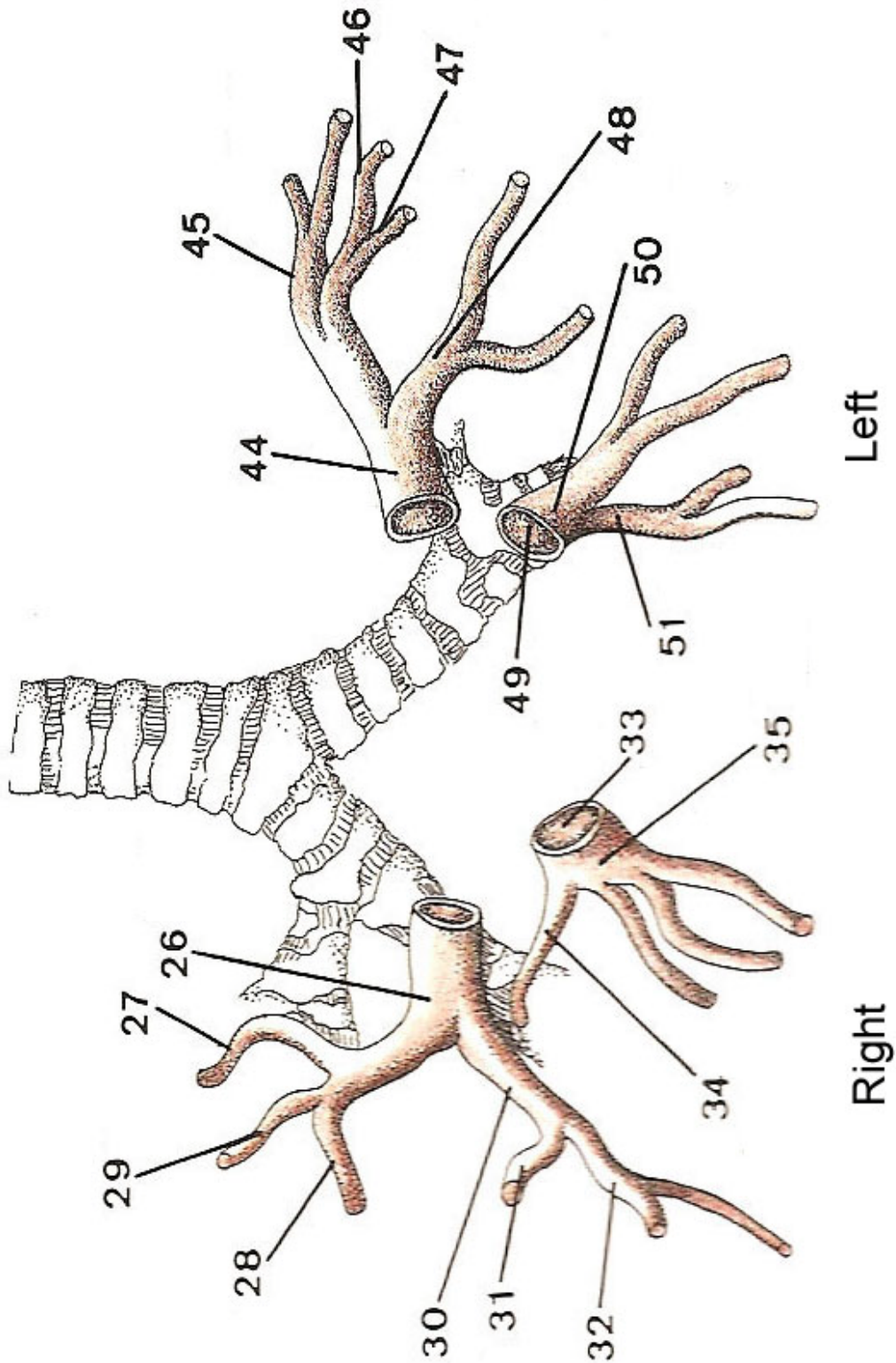
**Heart - posterior view**

## C2 – Heart/Lungs Model



**Pulmonary arteries (front view)**

## C2 – Heart/Lungs Model



**The pulmonary veins (front view)**