

## C5 – Artery & Vein Microanatomy



Medium-sized muscular artery with two adjacent veins from the antebrachial area with adjoining fat tissue and muscle enlarged 14 times.

- A. Vein** – in three layers from interior to exterior: Tunica intima, Tunica media, Tunica externa (or tunica adventitia)

*Tunica intima:*

1. endothelium
2. subendothelial layer of connective tissue and basal lamina
3. internal elastic lamina

4. *Tunica media*

5. *Tunica externa and vasa vasorum:*

6. venous valve

- B. Artery** – In three layers from interior to exterior: Tunica intima, Adjacent tunica media, Tunica externa (or tunica adventitia)

*Tunica intima:*

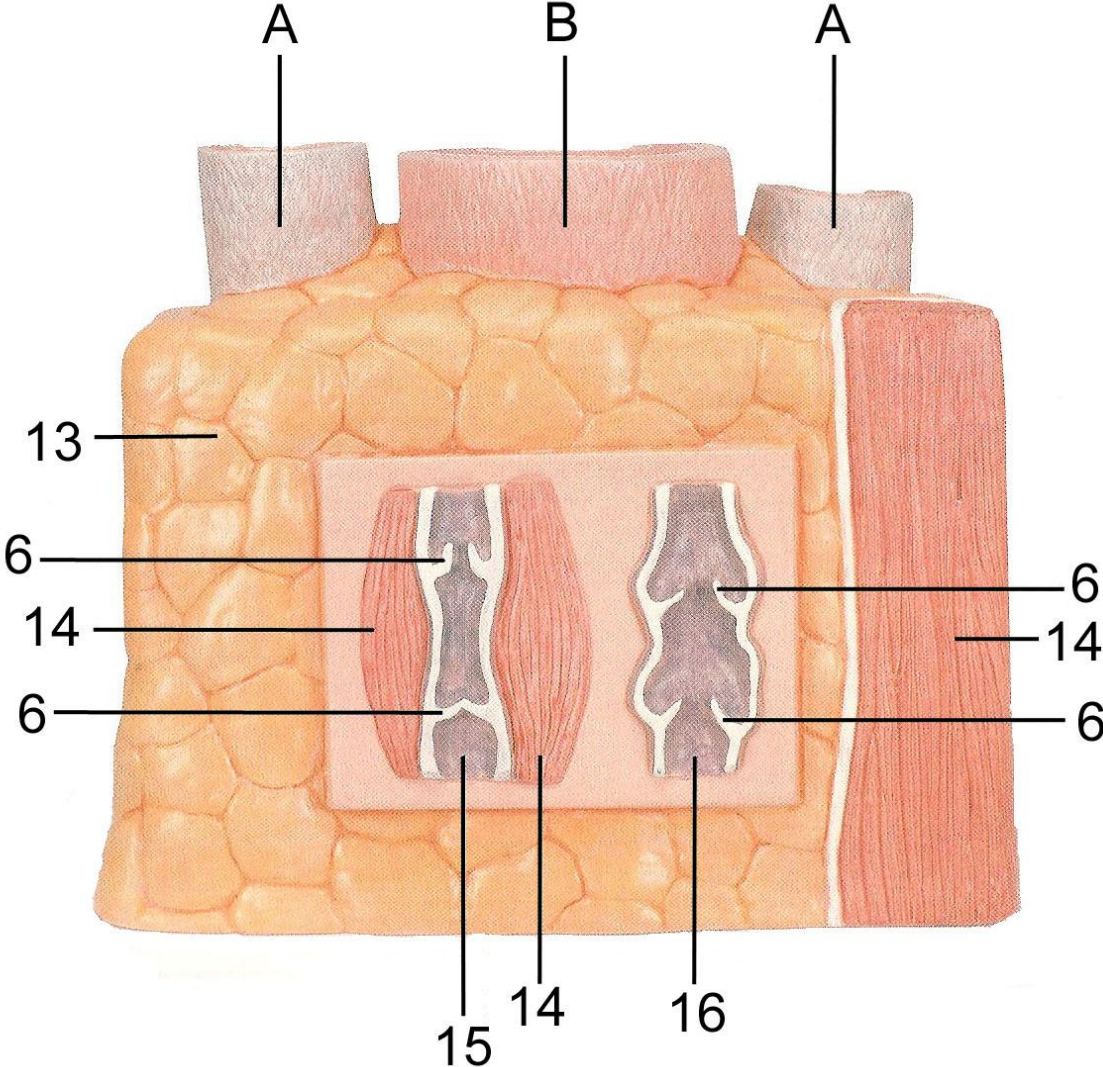
7. endothelium
8. subendothelial layer of connective tissue and basal lamina
9. internal elastic lamina

10. *Tunica media*

*Tunica externa:*

11. external elastic lamina
12. connective tissue with layer of elastic fibers and vasa vasorum
13. fat pad
14. muscle
15. sectional view of a vein with physiological valve function
16. sectional view of a vein with insufficient valve function (varicose vein)

# C5 – Artery & Vein Microanatomy



# C5 – Artery & Vein Microanatomy

