

D2 – Digestive Tract Microanatomy



A Esophagus

Mucosal Layer:

1. epithelial layer (nonkeratinized squamous epithelium)
2. lamina propria
3. muscularis mucosa

Submucosal Layer

4. submucosa
5. esophageal gland

Muscularis Layer:

6. circular layer
7. longitudinal layer

Serosa :

8. serosa

B Fundus of Stomach

Mucosal Layer:

1. outer mucous tissue (small depression in the mucous membrane of the stomach)
2. actual mucous membrane
3. mucous gland of the fundus of stomach
4. muscle layer in the mucous membrane

Submucosal Layer

5. sub-mucous tissue

Muscularis Layer:

6. circular layer
7. longitudinal layer
8. external coat
9. serous tunic
10. peptic cell
11. parietal cell
12. mucous neck cell

C Jejunum (small intestine)

Mucosal Layer:

1. outer mucous tissue
2. crypt
3. actual mucous membrane
4. muscle layer in the mucous membrane
5. sub-mucous tissue

Muscularis Layer:

6. circular layer
7. longitudinal layer
8. external coat
9. serous tunic
10. endocrine cell
11. paneth's granular cell

D Colon

Mucosal Layer.:

1. outer mucous tissue
2. crypt
3. actual mucous membrane
4. muscle layer in the mucous membrane

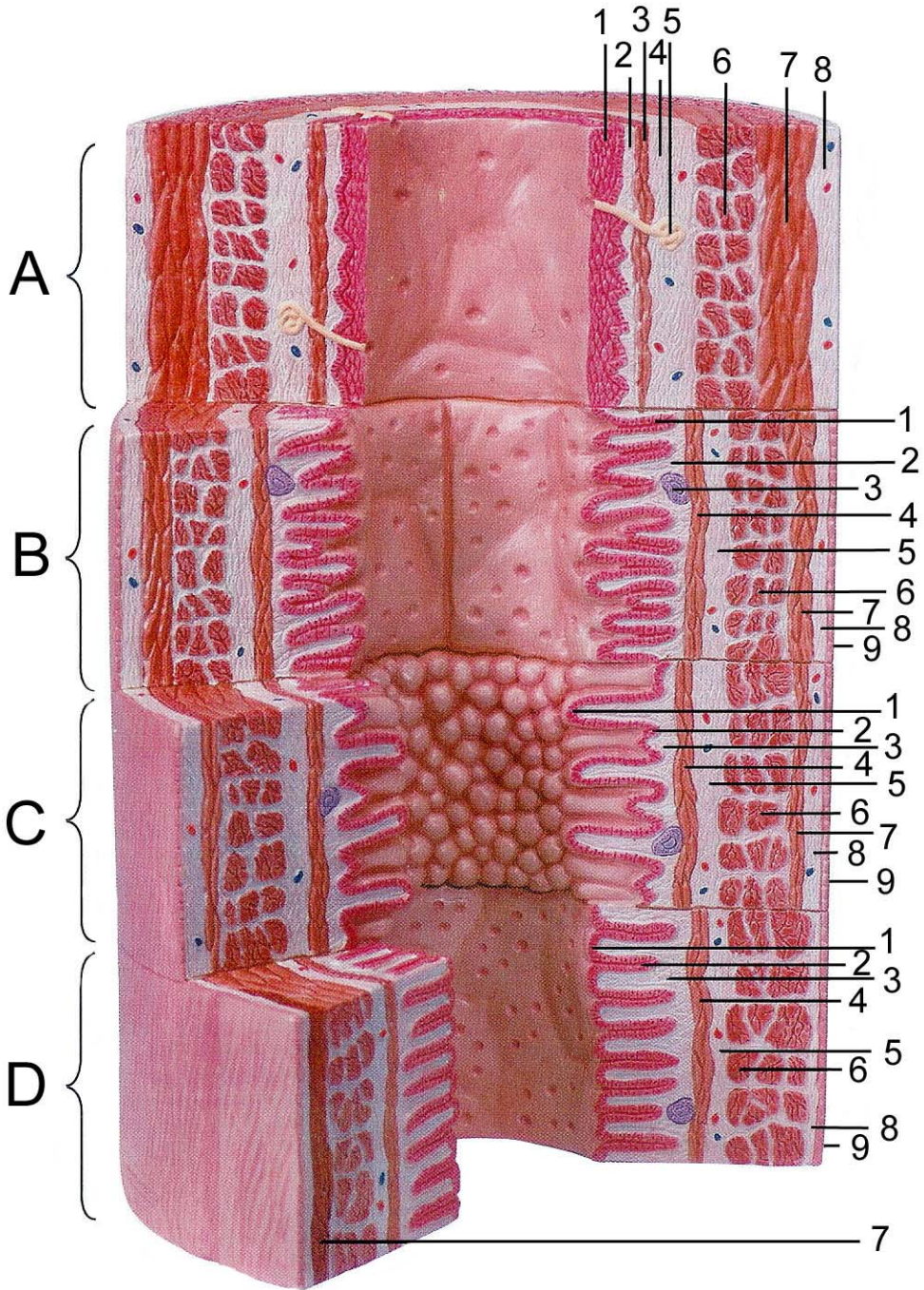
Submucosal Layer

5. sub-mucous tissue

Muscularis Layer:

6. circular layer
7. longitudinal layer
8. external coat
9. serous tunic
10. goblet cell
11. enterocytes

D2 – Digestive Tract Microanatomy



D2 – Digestive Tract Microanatomy

