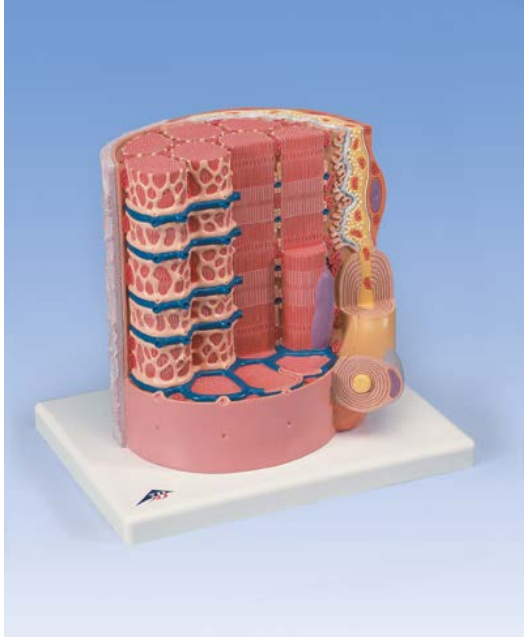


M4 – Muscle Fiber



See diagram
on next page

1. myofibrils
 2. mitochondrion
 3. motor end plate
 4. synaptic gap with basal lamina
 5. presynaptic membrane
 6. presynaptic vesicle
 7. Schwann cell
 8. nucleus of Schwann cell
 9. actin filament (also called thin myofilament) – this is the dark thinner line
 10. sarcomere
 11. myosin filament (also called thick myofilament) – this is the lighter color
 12. myelin sheath
 13. axon
 14. sarcolemma (cell membrane)
 15. transverse tubule (t-tubule)
 16. triad (made of two cisternae & one tubule)
 17. sarcoplasmic reticulum
- 18 & 19 makes the endomysium**
18. basal lamina
 19. reticular fibers
 20. nucleus of muscle fibers

NOTE: This is one muscle cell (muscle fiber) NOT an entire “named” skeletal muscle such as the biceps brachii.

M4 – Muscle Fiber

