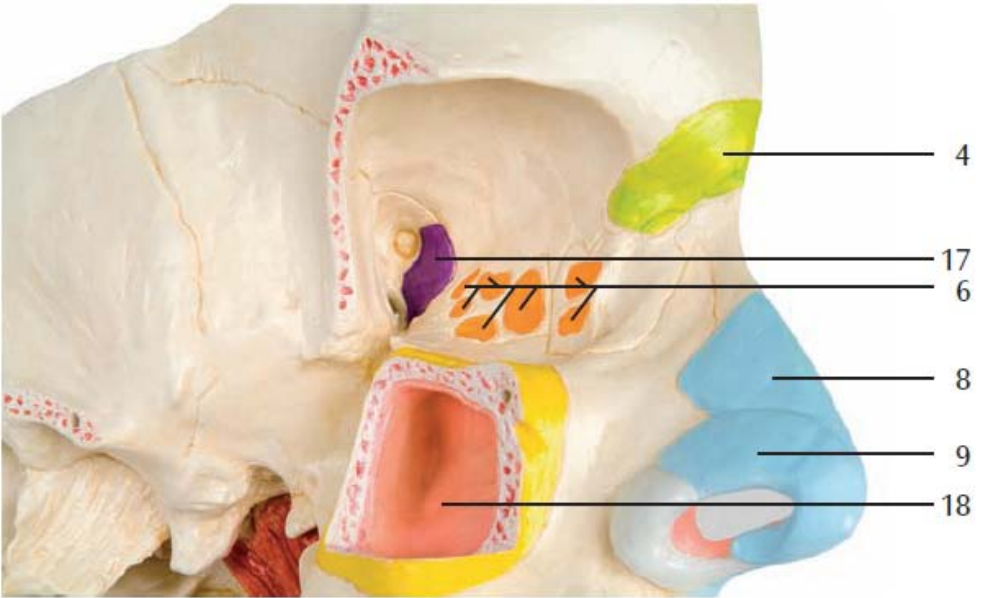
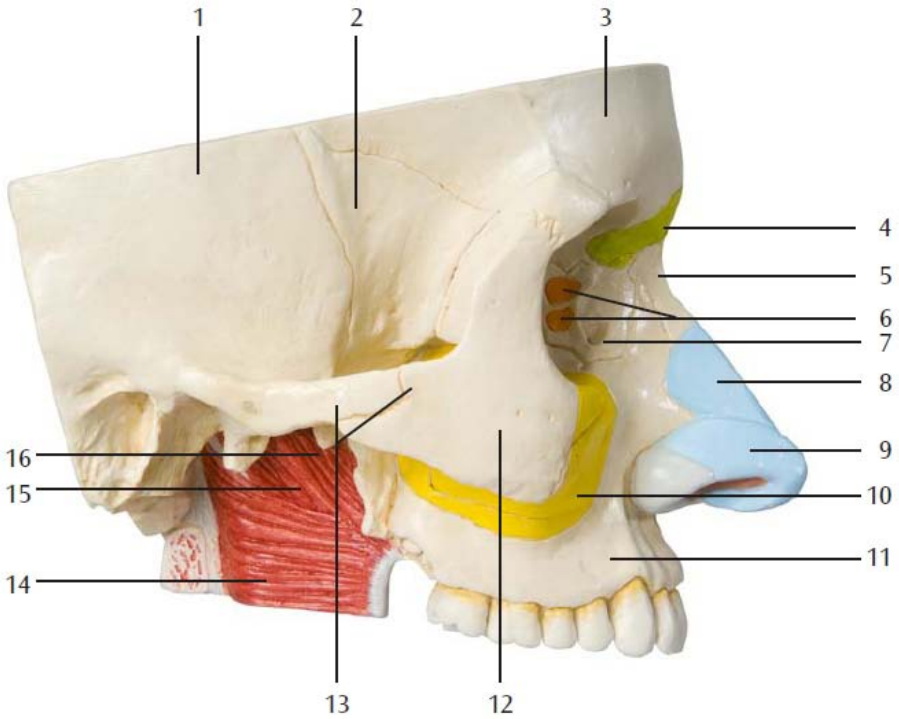


# RES4 – Nose with Sinus



1. temporal bone
2. sphenoid bone
3. frontal bone
4. location of frontal sinus
5. nasal bone
6. location of the ethmoidal labyrinth
7. lacrimal bone
8. lateral cartilage of nose
9. major alar cartilage
10. location of maxillary sinus
11. maxilla
12. zygomatic bone
13. zygomatic arch
14. superior constrictor
15. levator veli palatini
16. tensor veli palatini
17. location of sphenoid sinus
18. maxillary sinus
19. frontal sinus
20. olfactory nerves
21. olfactory bulb
22. olfactory tract
23. opening of posterior ethmoidal cell
24. posterior ethmoidal cell
25. sphenoidal sinus
26. posterior superior lateral nasal branches
27. greater palatine nerve
28. posterior inferior nasal nerve
29. inferior nasal concha
30. middle nasal concha
31. internal nasal branch
32. orifice of nasolacrimal canal
33. opening of maxillary sinus
34. hiatus semilunaris
35. orifice of nasofrontal canal
36. anterior and middle ethmoidal cells
37. opening of frontal sinus

# RES4 – Nose with Sinus



# RES4 – Nose with Sinus

