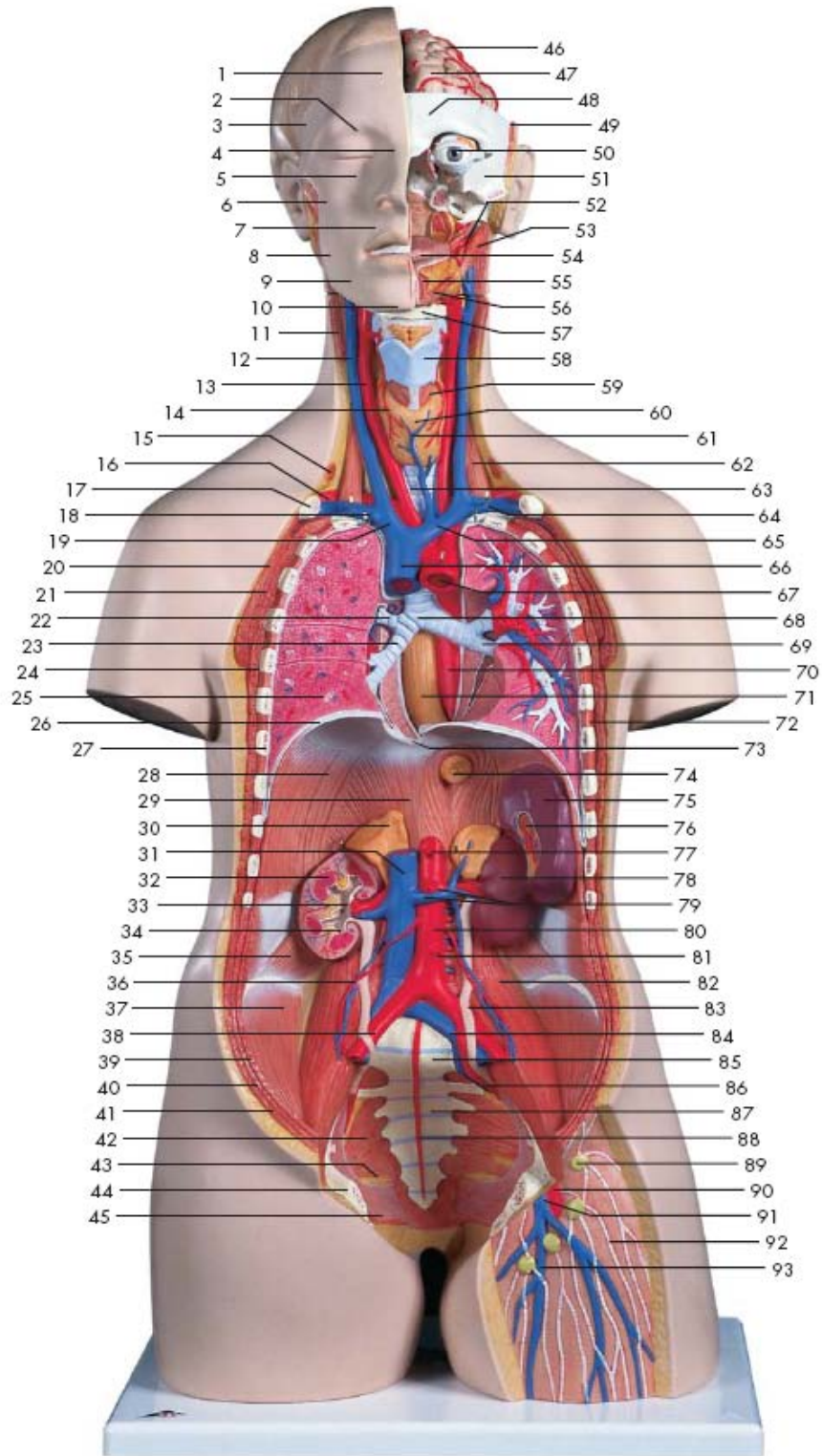


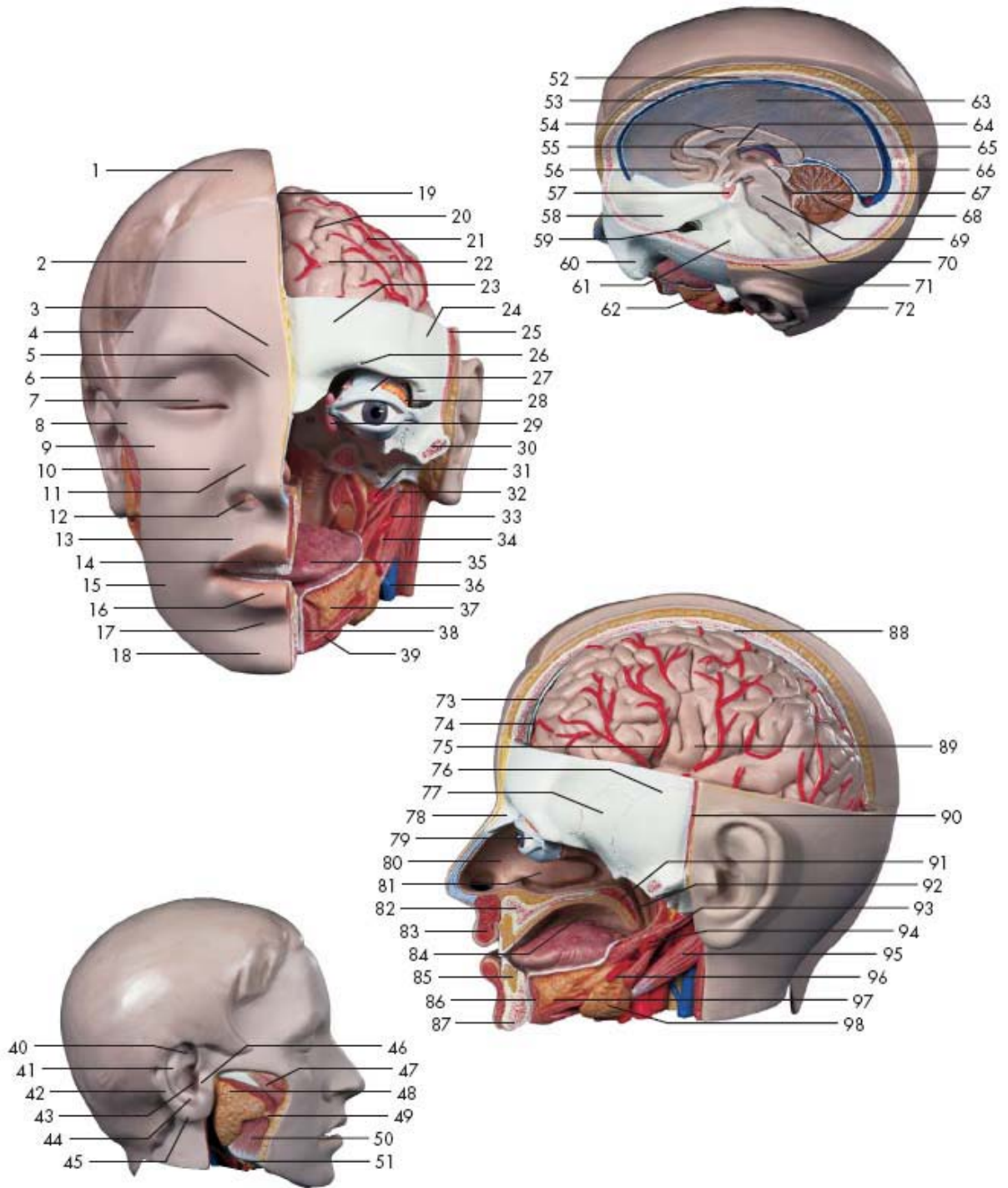
# T1 – Trunk, Bisexual



# T1 – Trunk, Bisexual

1. Frontal region
2. Orbital region
3. Temporal region
4. Nasal region
5. Infraorbital region
6. Infratemporal region
7. Oral region
8. Parotidomasseteric region
9. Buccal region
10. Chin region
11. Sternocleidomastoideus muscle
12. Right internal jugular vein
13. Right common carotid artery
14. Superior thyroid artery
15. Inferior belly of omohyoid muscle
16. Right subclavian artery
17. Clavicle
18. Right subclavian vein
19. Right brachiocephalic vein
20. Pectoralis major muscle
21. Pectoralis minor muscle
22. Right superior lobar bronchus
23. Right inferior lobar bronchus
24. ?Serratus anterior muscle
25. Right lung
26. Diaphragm
27. 7<sup>th</sup> rib
28. Costal part of diaphragm
29. Diaphragm, lumbar part
30. Right suprarenal gland
31. Inferior vena cava
32. Renal pyramid
33. Renal pelvis
34. Minor renal calyx
35. Quadratus lumborum muscle
36. Right testicular artery and vein
37. Iliacus muscle
38. Right common iliac artery
39. Transversus abdominis muscle
40. Obliquus internus abdominis muscle
41. Obliquus externus abdominis muscle
42. Piriformis muscle
43. Infrapiriform foramen
44. Pubic bone
45. Coccygeal muscle
46. Cerebral arteries
47. Left telencephalic hemisphere
48. Frontal bone
49. Temporalis muscle
50. Ball of the eye (ocular bulb)
51. Zygomatic bone (cheekbone)
52. External carotid artery
53. Posterior belly of digastric muscle
54. tongue
55. Mental muscle
56. Anterior belly of digastric muscle
57. Hyoid bone
58. Thyroid cartilage
59. Cricothyroid muscle
60. Thyroid gland
61. Inferior thyroid vein
62. Scalenus anterior muscle
63. Trachea (windpipe)
64. Left subclavian vein
65. Left brachiocephalic vein
66. Superior vena cava
67. Ascending aorta
68. Bifurcation of trachea
69. Bronchus of left inferior lobe
70. Thoracic part of aorta
71. Esophagus (gullet)
72. External intercostal muscles
73. Foramen of vena cava
74. Abdominal part of esophagus
75. Spleen
76. Hilum of spleen
77. Celiac trunk
78. Left kidney
79. Left renal artery and vein
80. Abdominal aorta
81. Inferior mesenteric artery
82. Psoas minor muscle
83. Left ureter
84. Left common iliac vein
85. Promontory
86. Left internal iliac artery and vein
87. Sacral bone
88. Median sacral artery
89. Lymph node
90. Femoral artery
91. Femoral vein
92. Lymph vessel
93. Great saphenous vein

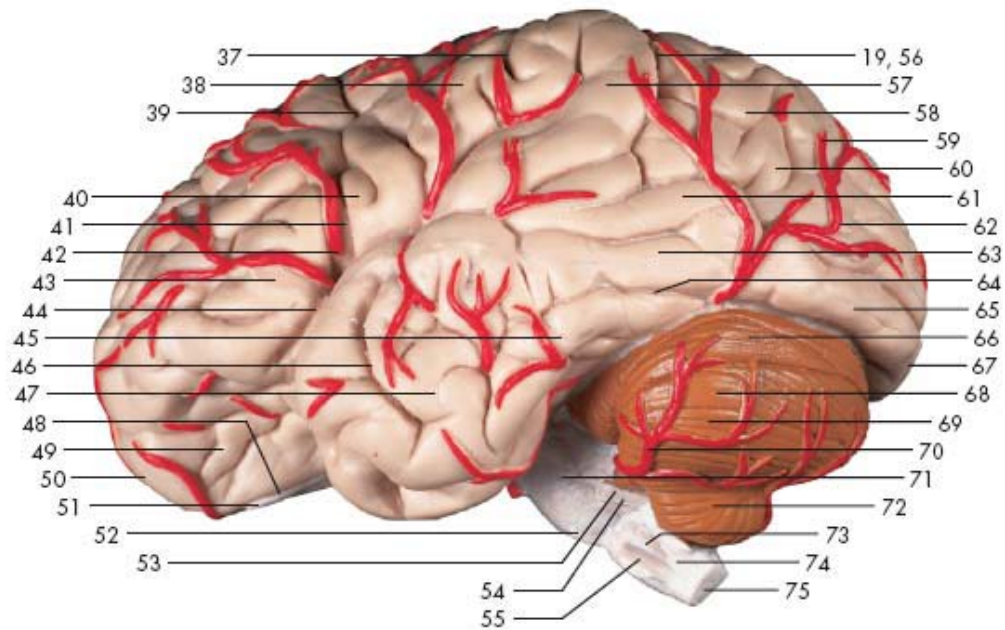
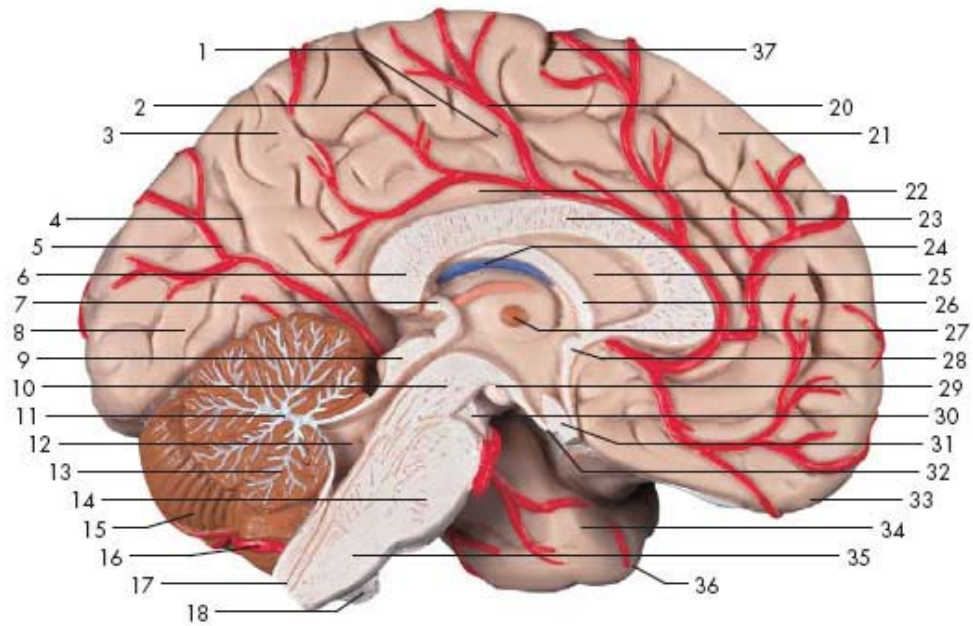
# T1 – Head with Brain Hemisphere



# T1 – Head with Brain Hemisphere

1. Hair
2. Frontal region
3. Glabella
4. Temporal region
5. Nasal root
6. Orbital region
7. Superior palpebra
8. Infratemporal region
9. Zygomatic region
10. Infraorbital region
11. Nasal region
12. Nostrils
13. Oral region
14. Superior lip
15. Parotideomasseteric region
16. Inferior lip
17. Mentolabial sulcus
18. Chin region
19. Longitudinal fissure of cerebrum
20. Superior frontal sulcus
21. Cerebral artery
22. Medial frontal gyrus
23. Frontal bone
24. Sphenoid bone
25. Temporalis muscle
26. Supraorbital foramen
27. Ball of the eye (ocular bulb)
28. Lacrimal gland
29. Lacrimal sac
30. Zygomatic bone (cheekbone)
31. External carotid artery
32. Styloglossus muscle
33. Facial artery
34. Stylohyoideus muscle
35. Tongue
36. External jugular vein
37. Sublingual gland
38. Genioglossus muscle
39. Mylohyoideus muscle
40. Triangular fossa
41. Antihelix (anthelix)
42. Helix
43. External acoustic meatus
44. Antitragus
45. Ear lobule
46. Tragus
47. Zygomaticus major muscle
48. Parotid gland
49. Parotid duct (duct of Stenon)
50. Masseter muscle
51. Submandibular gland
52. Parietal bone
53. Superior sagittal sinus
54. Trunk of corpus callosum
55. Pellucid septum
56. Subcallosal area (Broca's parolfactory area)
57. Pituitary gland (hypophysis)
58. Anterior cranial fossa
59. Oval foramen of sphenoid bone
60. Zygomatic bone (cheekbone)
61. Medial cranial fossa
62. Sublingual gland
63. Falx of cerebrum
64. Fornix
65. Choroid plexus
66. Straight sinus
67. Fourth ventricle
68. Cerebellum
69. Pons (bridge of Varolius)
70. Medulla oblongata (bulbus)
71. Temporalis muscle
72. External ear
73. Frontal bone
74. Dura mater of brain
75. Middle cerebral artery
76. Temporal bone
77. Sphenoid bone
78. Nasal bone
79. Superior tarsus
80. Cavum of nose
81. Inferior turbinate bone
82. Maxillary bone
83. Orbicularis oris muscle
84. Hard palate
85. First incisor
86. Genioglossus muscle
87. Mandible
88. Parietal bone
89. Left telencephalic hemisphere
90. Temporalis muscle
91. Muscle of uvula
92. Pharynx
93. Styloglossus muscle
94. External carotid artery
95. Posterior belly of digastric muscle
96. Facial artery
97. Sublingual gland
98. Submandibular gland

# T1 – Brain Hemisphere

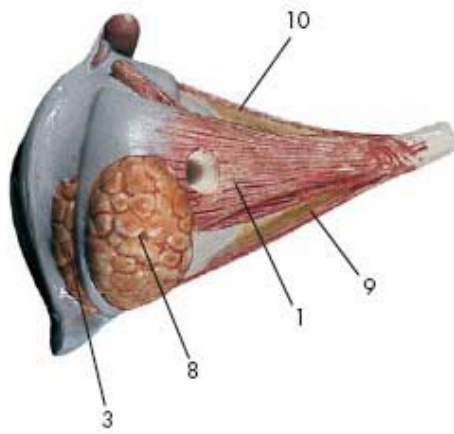




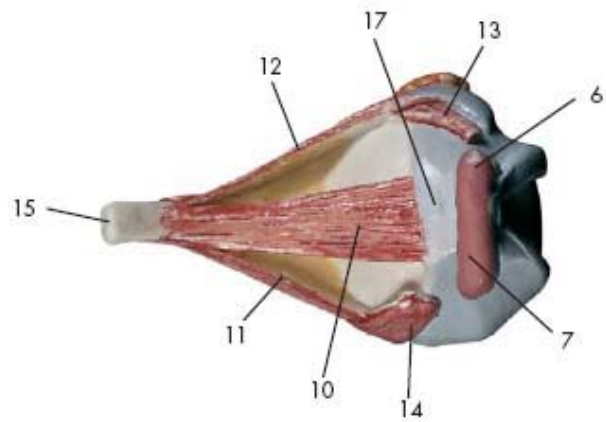
# T1 – Brain Hemisphere

1. Cingulate sulcus
2. Paracentral lobule
3. Precuneus
4. Parietoccipital sulcus
5. Posterior cerebral artery
6. Splenium of corpus callosum
7. Posterior commissure
8. Cuneate lobe (cuneus lobe)
9. Lamina quadrigemina
10. Mesencephalic tegmentum
11. Medullar body of cerebellum
12. Fourth ventricle
13. Arbor vitae
14. Pons (bridge of Varolius)
15. Cerebellar hemisphere
16. Posterior inferior cerebellar artery
17. Central canal
18. Hypoglossal nerve
19. Postcentral sulcus
20. Anterior cerebral artery, paracentral branches
21. Superior frontal gyrus
22. Cingulate gyrus (limbic gyrus)
23. Trunk of corpus callosum
24. Choroid plexus
25. Pellucid septum
26. Fornix
27. Interthalamic connexus adhesion
28. Anterior commissure (rostral commissure)
29. Mamillary body
30. Oculomotor nerve
31. Optic nerve
32. Infundibulum
33. Frontal pole
34. Temporal lobe
35. Medulla oblongata (bulbus)
36. Temporal pole
37. Central sulcus
38. Precentral gyrus
39. Precentral sulcus
40. Opercular part of inferior frontal gyrus
41. Ascending branch of lateral sulcus
42. Middle cerebral artery
43. Triangular part of inferior frontal gyrus
44. Lateral sulcus
45. Middle temporal gyrus
46. Superior temporal sulcus
47. Temporal lobe
48. Olfactory tract
49. Frontal gyri
50. Frontal pole
51. Olfactory bulb
52. Abducent nerve
53. Vestibulocochlear nerve
54. Facial nerve (intermediofacial nerve)
55. Hypoglossal nerve
56. Postcentral sulcus
57. Postcentral gyrus
58. Superior parietal lobule
59. Posterior cerebral artery
60. Parietal lobe
61. Supramarginal gyrus
62. Parietoccipital sulcus
63. Superior temporal gyrus
64. Superior temporal sulcus
65. Occipital lobe
66. Superior semilunar lobule
67. Occipital pole
68. Cerebellum
69. Inferior semilunar lobule
70. Superior cerebellar artery
71. Pons (bridge of Varolius)
72. Cerebellar tonsil
73. Olive (olivary body)
74. Medulla oblongata (bulbus)
75. Spinal marrow

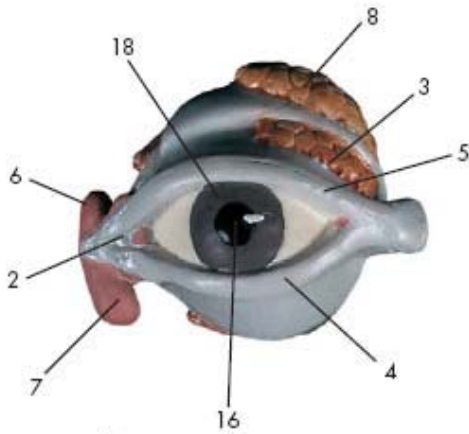
# T1 – Eye, Open



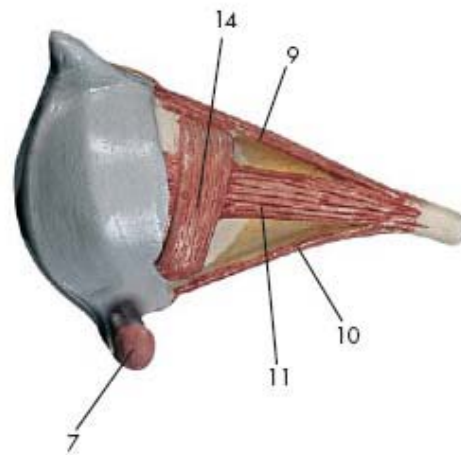
**a1**



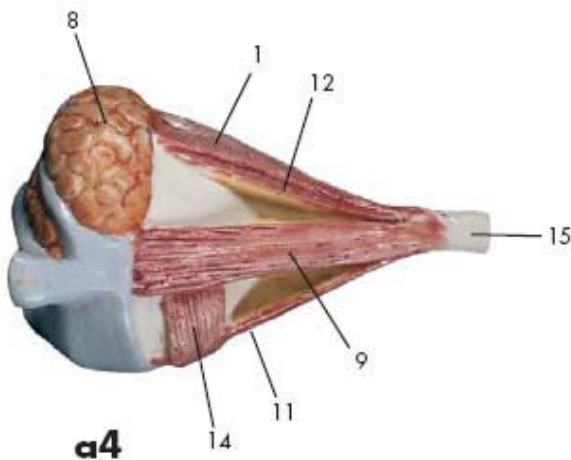
**a2**



**a3**



**a5**



**a4**

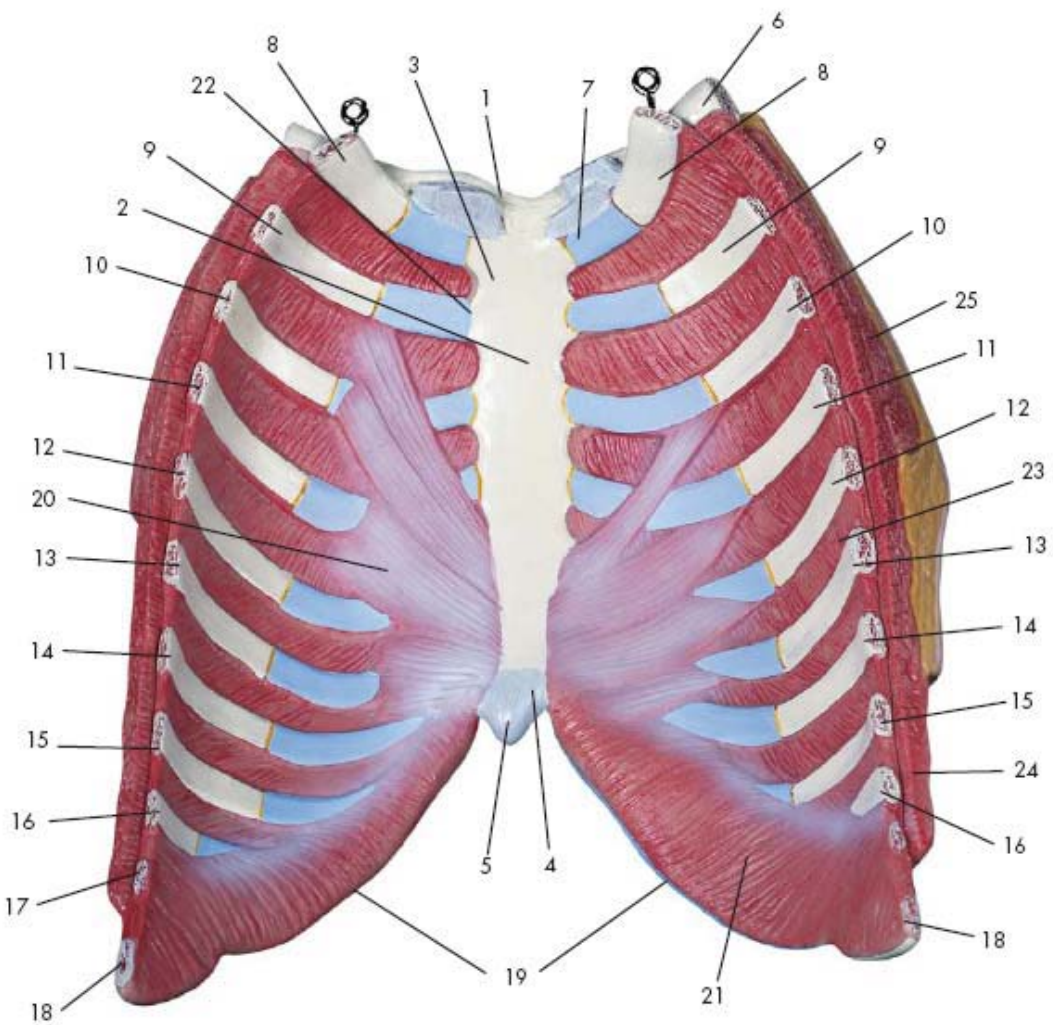
# T1 – Eye, Open

- a1 Eye, Superior view**
- a2 Eye, medial view**
- a3 Eye, anterior view**
- a4 Eye, lateral view**
- a5 Eye, inferior view**

1. Levator palpebrae superioris muscle
2. Middle palpebral ligament
3. Palpebral part of lacrimal gland
4. Inferior palpebra (eyelid)
5. Superior palpebra (eyelid)
6. Fornix of lacrimal sac
7. Lacrimal sac
8. Orbital part of lacrimal gland
9. Rectus lateralis muscle
10. Rectus medialis muscle
11. Rectus inferior muscle
12. Rectus superior muscle
13. Tendon of Obliquus superior muscle
14. Obliquus inferior muscle
15. Optic nerve
16. Pupil
17. Ball of the eye (ocular bulb)
18. Iris



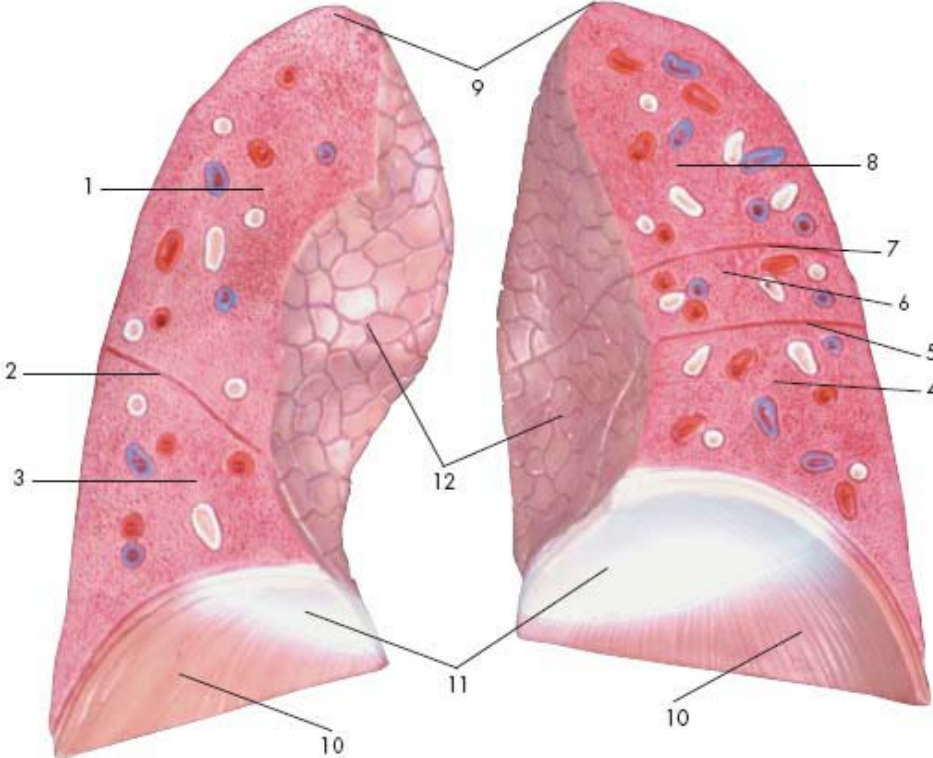
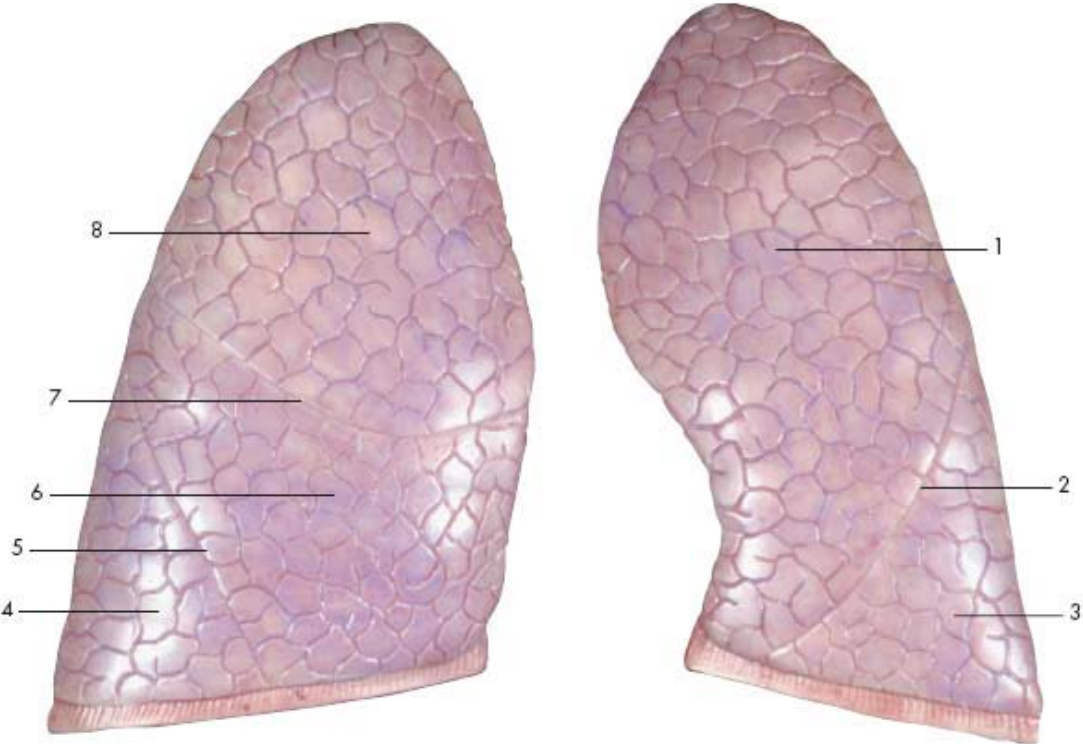
# T1 – Female Chest Wall



# T1 – Female Chest Wall

1. Sternoclavicular joint
2. Sternal body
3. Manubrium of sternum
4. Xiphoid process
5. Sternal part of diaphragm
6. Clavicle
7. Costicartilage (costal cartilage)
8. First rib
9. Second rib
10. 3<sup>rd</sup> rib
11. 4<sup>th</sup> rib
12. 5<sup>th</sup> rib
13. 6 rib
14. 7<sup>th</sup> rib
15. 8<sup>th</sup> rib
16. 9<sup>th</sup> rib
17. 10<sup>th</sup> rib
18. 11<sup>th</sup> rib
19. Costal arch
20. Transversus thoracis muscle
21. Transversus abdominis muscle
22. Sternocostal joint
23. Internal intercostal muscles
24. Serratus anterior muscle
25. Pectoralis major muscle

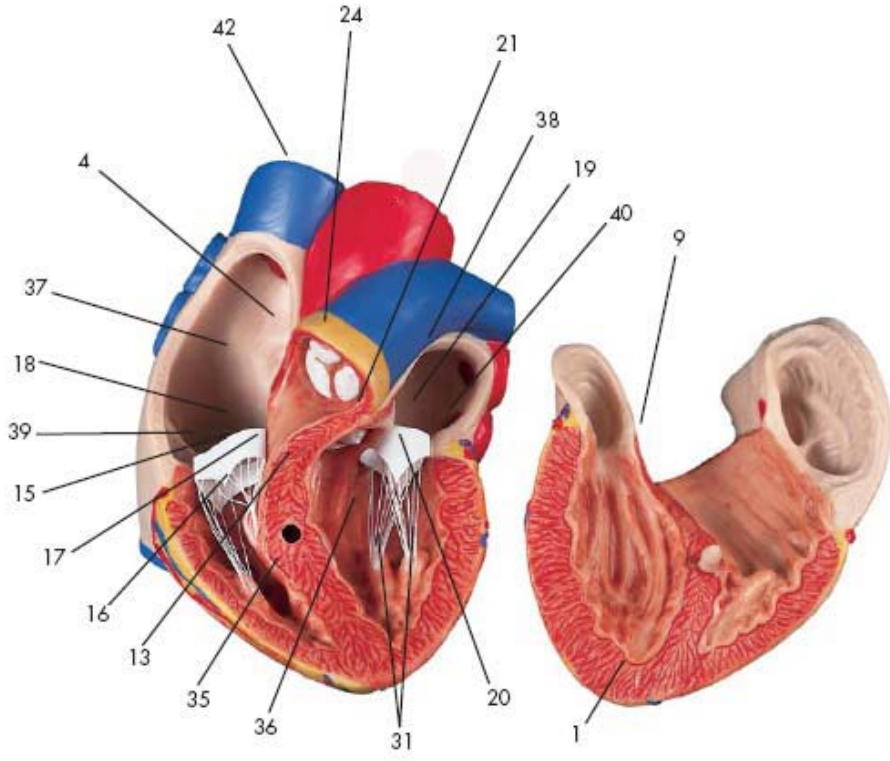
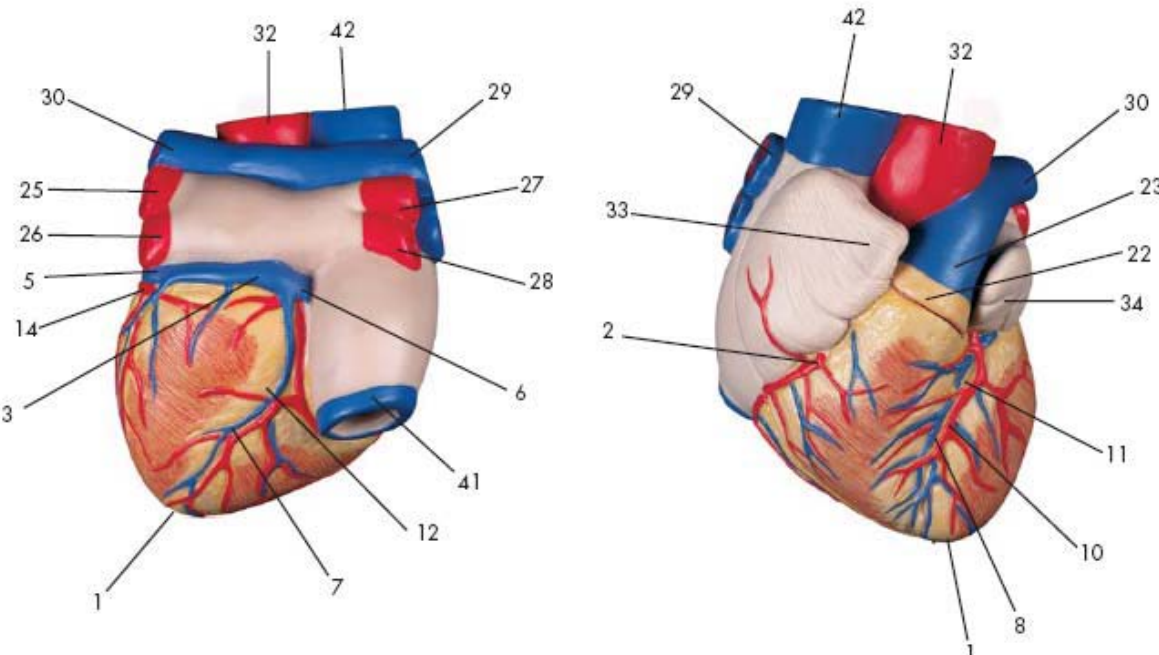
# T1 – Lungs



# T1 – Lungs

1. Left superior pulmonary lobe
2. Oblique fissure of left lung
3. Left inferior pulmonary lobe
4. Right inferior pulmonary lobe
5. Oblique fissure of right lung
6. Right middle pulmonary lobe
7. Horizontal fissure of right lung
8. Right superior pulmonary lobe
9. Apex of lung
10. Costal part of diaphragm
11. Tendinous centre (phrenic centre)
12. Cardiac impression of lung

# T1 - Heart

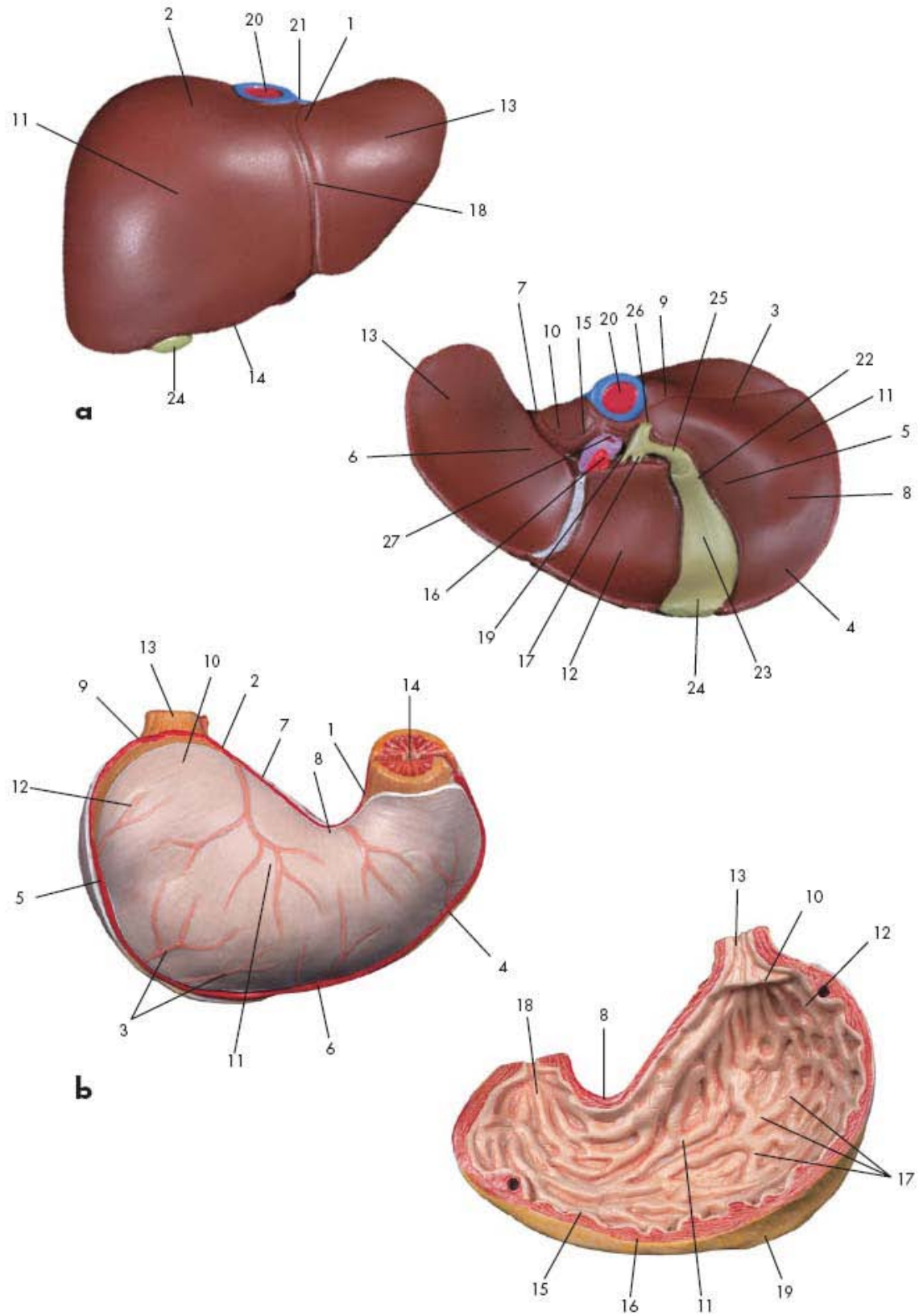


# T1 - Heart

1. Apex of heart
2. Right coronary artery of heart
3. Coronary sinus
4. Oval fossa of heart
5. Left coronary vein
6. Small cardiac vein
7. Posterior Interventricular vein
8. Anterior Interventricular vein
9. Membranous part of Interventricular septum
10. anterior Interventricular branch of left coronary artery
11. Anterior Interventricular sulcus
12. Posterior Interventricular sulcus
13. Muscular part of Interventricular septum
14. Circumflex branch of left coronary artery
15. Right anterior atrioventricular cusp
16. Right posterior atrioventricular cusp
17. Septal cusp
18. Tricuspid valve (right AV-valve)
19. Mitral valve (left AV-valve)
20. Left anterior atrioventricular cusp
21. Left semilunar cusp of aortic valve
22. Pulmonary trunk
23. Pulmonary artery
24. Anterior semilunar cusp of pulmonary trunk
25. Superior left pulmonary vein
26. Inferior left pulmonary vein
27. Superior right pulmonary vein
28. Inferior right pulmonary vein
29. Right pulmonary artery
30. Left pulmonary artery
31. Papillary muscles
32. Ascending aorta
33. Right auricle
34. Left auricle
35. Right ventricle
36. Left ventricle
37. Right atrium
38. Left atrium
39. Right fibrous ring
40. Left fibrous ring
41. Inferior vena cava
42. Superior vena cava



# T1 – Liver and Open Stomach



# T1 – Liver and Open Stomach

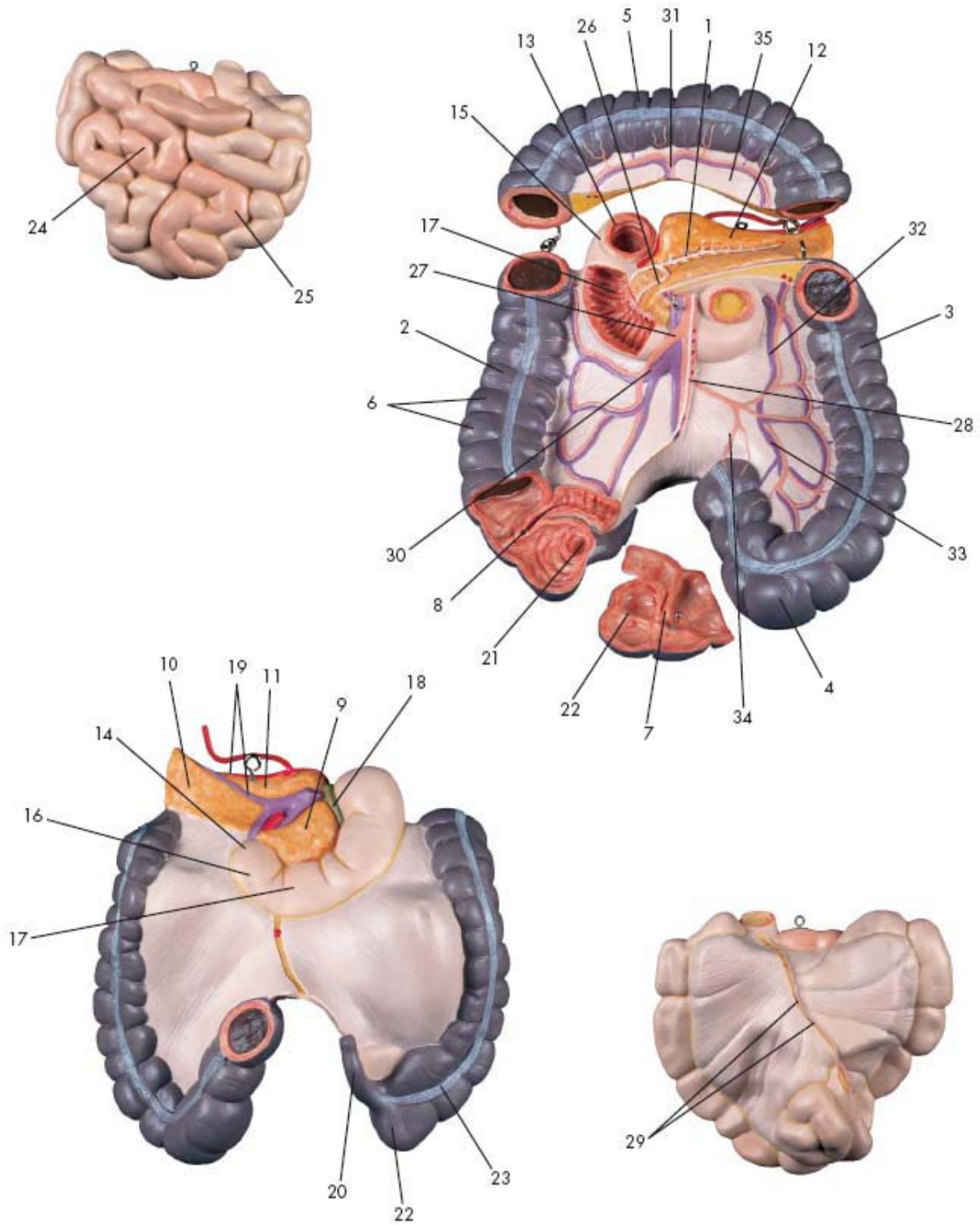
## a Liver

1. Bare area of liver
2. Diaphragmatic surface of hepar
3. Visceral surface of hepar
4. Colic impression of liver
5. Duodenal impression of liver
6. Gastric impression of liver
7. Esophageal impression of liver
8. Renal impression of liver
9. Suprarenal impression of liver
10. Caudate lobe of liver
11. Right lobe of liver
12. Quadrate lobe of liver
13. Left lobe of liver
14. Inferior margin of liver
15. Caudate process of liver
16. Common hepatic artery
17. Right hepatic duct
18. Falciform ligament of liver
19. Left hepatic duct
20. Inferior vena cava
21. Hepatic veins
22. Neck of gallbladder
23. Body of gallbladder
24. Fundus of gallbladder
25. Cystic duct
26. Common bile duct
27. Portal vein of liver

## b Stomach

1. Right gastric artery
2. Left gastric artery
3. Short gastric arteries
4. Right gastroepiploic artery
5. Left gastroepiploic artery
6. Major gastric curvature
7. Minor gastric curvature
8. Angular notch of stomach
9. Cardiac notch of stomach
10. Cardiac part of stomach
11. Body of stomach
12. Fundus of stomach
13. Abdominal part of esophagus
14. Pylorus
15. Mucosa of stomach
16. Muscular coat of stomach
17. Gastric folds
18. Pyloric antrum (pyloric canal)
19. Greater omentum

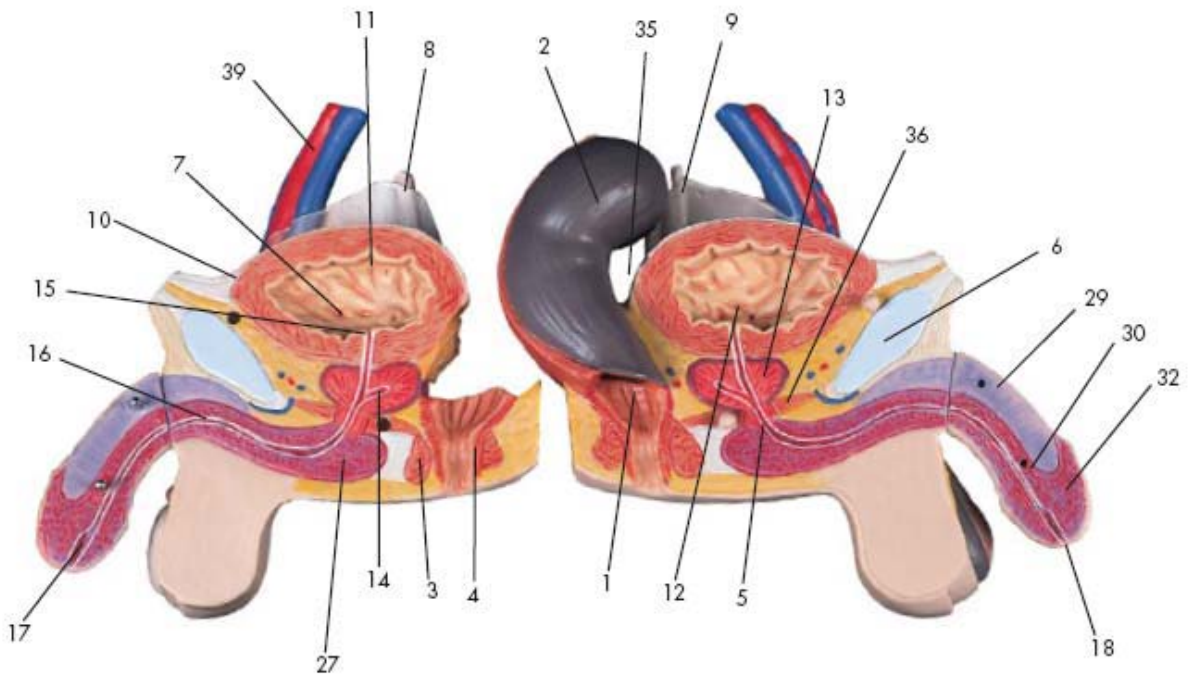
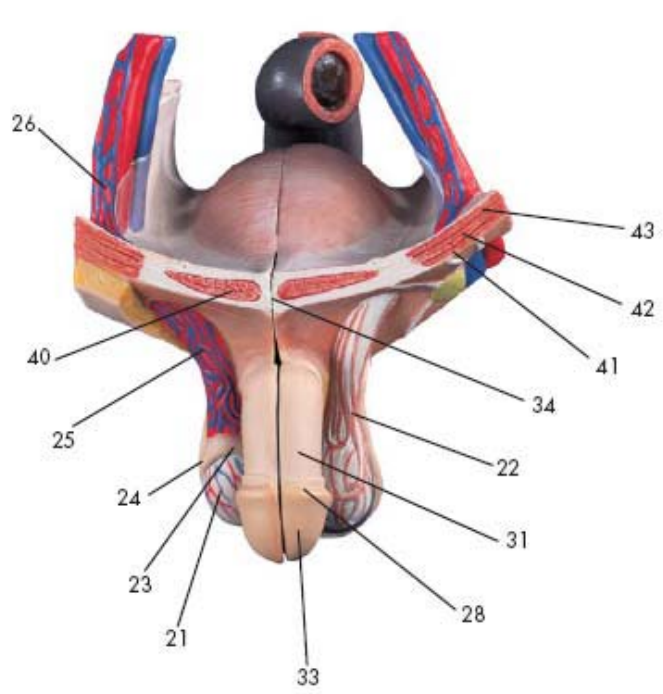
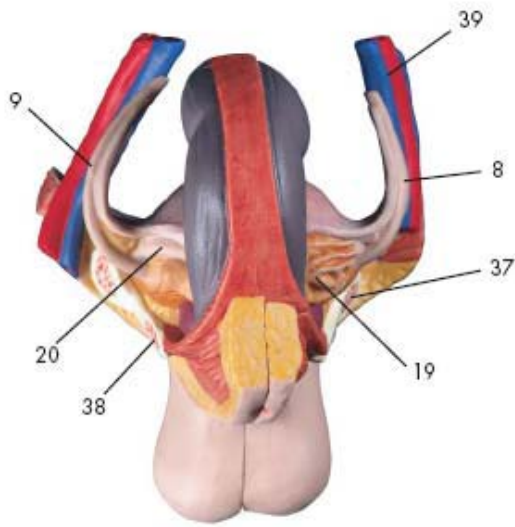
# T1 – Small & Large Intestine



# T1 – Small & Large Intestine

1. Pancreatic duct
2. ascending colon
3. Descending colon
4. Sigmoid colon (pelvic colon)
5. Transverse colon
6. Haustra of colon (Sacculations of colon)
7. Ostium of Ileocecal valve
8. Ileocecal valve
9. Pancreatic head
10. Pancreatic cauda (pancreatic tail)
11. Pancreatic body
12. Pancreas
13. Duodenum
14. inferior duodenal flexure
15. Superior duodenal flexure
16. Ascending part of duodenum
17. Descending part of duodenum
18. Common bile duct
19. Splenic artery and vein (lienal artery and vein)
20. Vermiform appendage
21. Ostium of vermiform appendage
22. Cecum (blind sac)
23. Free taenia
24. Ileum
25. Jejunum
26. Santorini's duct
27. Superior mesenteric artery and vein
28. Inferior mesenteric artery and vein
29. Jejunal and ileal arteries and veins
30. Right colic artery and vein
31. Middle colic artery and vein
32. Left colic artery and vein
33. Sigmoid arteries and veins
34. Superior rectal artery
35. Mesentery of transverse colon

# T1 – Male Genital Organs

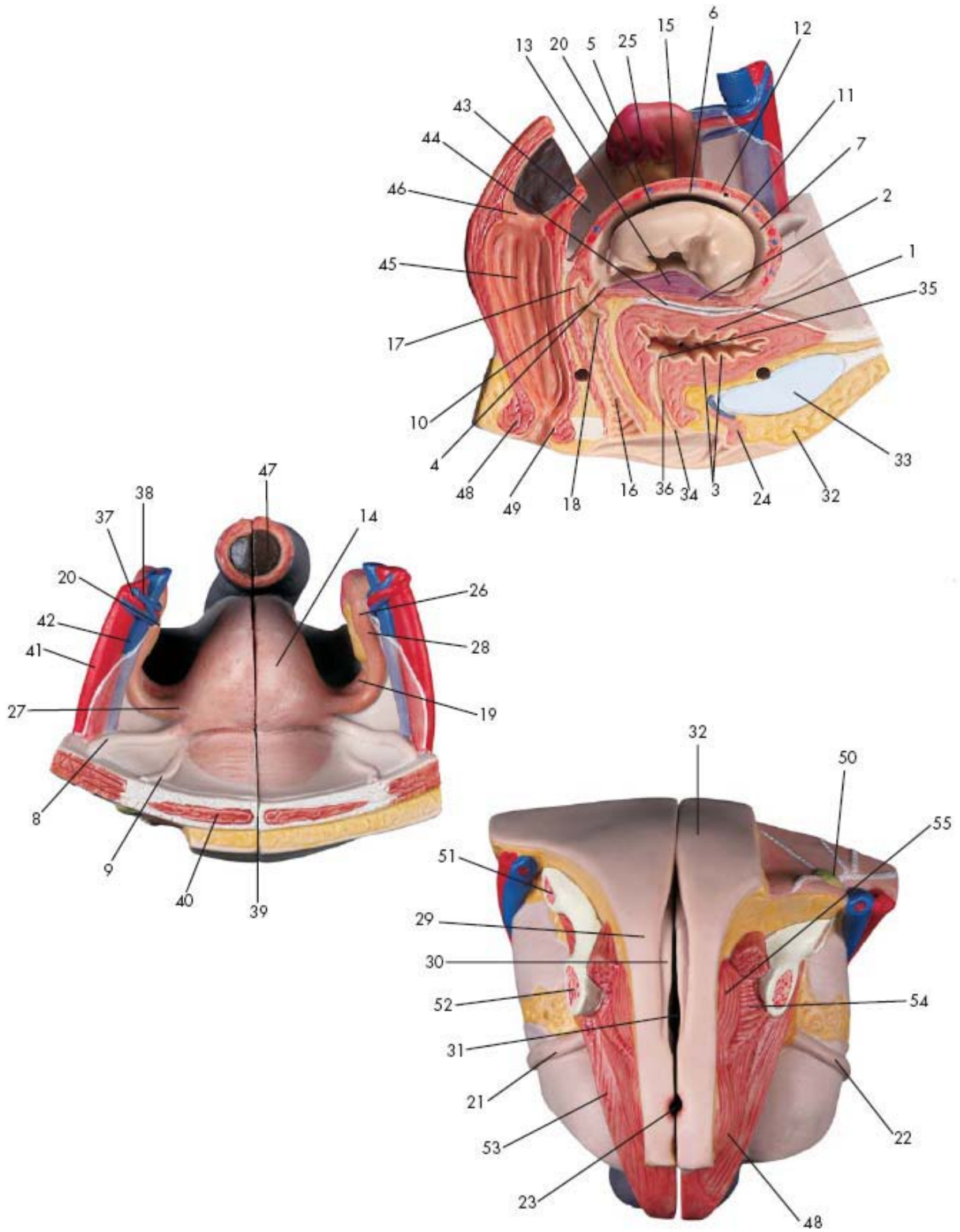


# T1 – Male Genital Organs

1. Rectal ampulla
2. Rectum
3. Sphincter ani externus muscles
4. Sphincter ani internus muscle
5. Sphincter urethrae muscle
6. Pubic symphysis
7. Ureteric orifice
8. Right ureter
9. Left ureter
10. Apex of urinary bladder
11. Body of bladder
12. Vesical Trigone
13. Prostate
14. Prostatic utricle
15. Internal urethral orifice
16. Spongy part of masculine urethra
17. Navicular fossa of urethra (great lacuna of urethra)
18. External opening of masculine urethra
19. Seminal vesicle
20. Deferent duct (spermatic duct)
21. Testis
22. Cremasteric fascia
23. Head of epididymis
24. Cauda of epididymis
25. Spermatic plexus
26. Right testicular artery and vein
27. Bulbus penis
28. Corona of glans
29. Cavernous body of penis
30. Spongy body of penis
31. Superficial fascia of penis
32. Glans of penis
33. Prepuce of penis
34. White line of abdomen (linea alba)
35. Rectovesical excavation
36. Transversus perineae profundus muscle
37. Ascending ramus of pubis
38. Descending ramus of pubis (inferior pubic ramus)
39. Right external iliac artery and vein
40. Rectus abdominis muscle
41. Obliquus externus abdominis muscle
42. Obliquus internus abdominis muscle
43. Transversus abdominis muscle



# T1 – Female Genital Organs



# T1 – Female Genital Organs

1. Bladder
2. Vesical surface of uterus
3. Mucosal folds of urinary bladder
4. Cervical canal of uterus  
(uterocervical canal)
5. Uterine cavity
6. Uterine body
7. Fundus of uterus
8. Round ligament of uterus
9. Medial umbilical fold
10. Vaginal part of cervix uteri
11. Uterine mucosa (endometrium)
12. Muscular coat of uterus  
(myometrium)
13. Placenta
14. Uterus
15. Intestinal surface of uterus
16. Vagina
17. Posterior fornix (fundus) of vagina
18. Anterior fornix (fundus) of vagina
19. Ovarian ligament
20. Ovary
21. Right ureter
22. Left ureter
23. Anus (anal orifice)
24. Cavernous body of clitoris
25. Fimbriae of uterine tube
26. Infundibulum of uterine tube
27. Isthmus of uterine tube
28. Ampulla of uterine tube
29. Greater pudendal lip
30. Lesser pudendal lip
31. Vaginal introitus
32. Mons pubis
33. Pubic symphysis
34. External opening of feminine urethra
35. Internal urethral orifice
36. Urethra
37. Ovarian artery
38. Ovarian vein
39. White line of abdomen (linea alba)
40. Rectus abdominis muscle
41. External iliac artery
42. External iliac vein
43. Rectouterine excavation  
(Rectouterine pouch)
44. Vesicouterine excavation
45. Rectal ampulla
46. Transverse Rectal fold
47. Rectum
48. Sphincter ani externus muscle
49. Sphincter ani internus muscle
50. Superficial inguinal lymph nodes
51. Ascending ramus of pubis
52. Descending ramus of pubis (inferior  
pubic ramus)
53. Levator ani muscle
54. Puborectalis muscle
55. Bulbospongiosus muscle