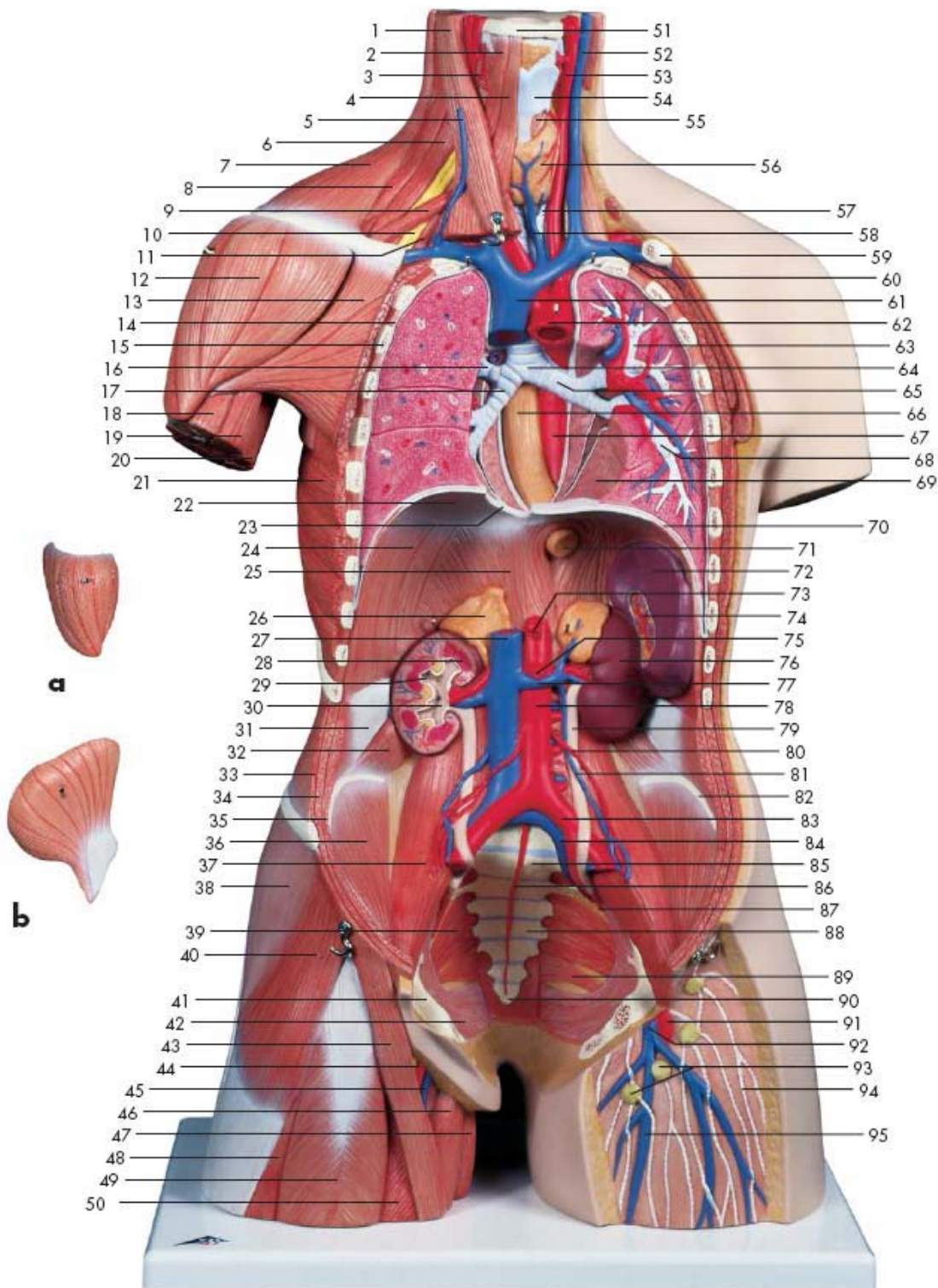


T2 – Trunk, Bisexual



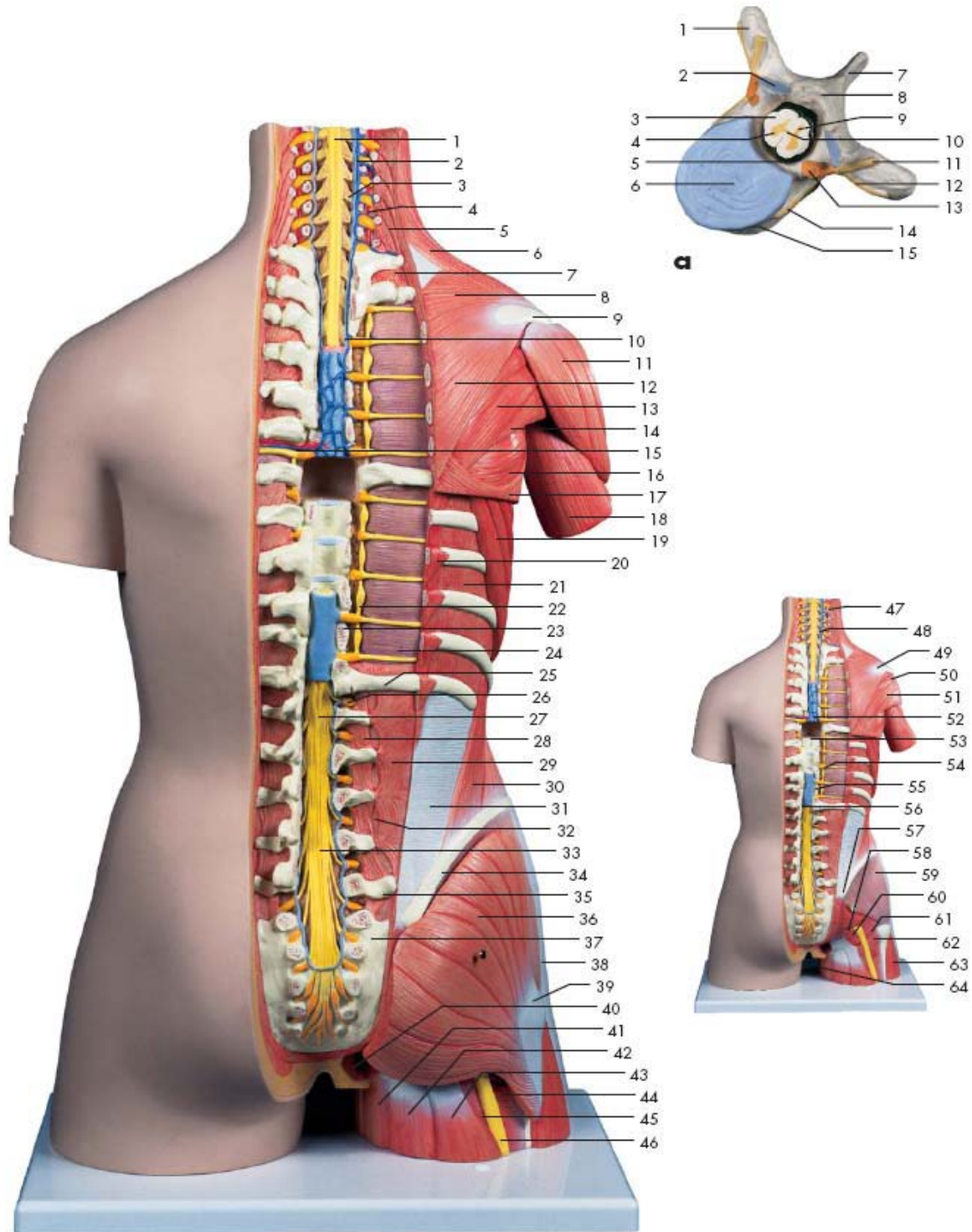
T2 – Trunk, Bisexual

a. Deltoideus muscle

b. Gluteus maximus muscle

1. Sternocleidomastoideus muscle
2. Superior belly of omohyoid muscle
3. Constrictor pharyngis inferior muscle
4. Sternohyoideus muscle
5. Right external jugular vein
6. Scalenus medius muscle
7. Trapezius muscle
8. Levator scapulae muscle
9. Inferior belly of omohyoid muscle
10. Brachial plexus
11. Scalenus anterior muscle
12. Deltoideus muscle
13. Pectoralis major muscle
14. Internal intercostal muscles
15. Rib
16. Right superior lobar bronchus
17. Right inferior lobar bronchus
18. Long head of biceps brachii muscle
19. Short (medial) head of biceps brachii muscle
20. Long head of triceps brachii muscle
21. Serratus anterior muscle
22. Tendinous centre (phrenic centre)
23. Foramen of vena cava
24. Costal part of diaphragm
25. Diaphragm, lumbar part
26. Right suprarenal gland
27. Inferior vena cava
28. Renal pyramid
29. Renal calyx
30. Renal pelvis
31. Transversus abdominis muscle
32. Quadratus lumborum muscle
33. Obliquus externus abdominis muscle
34. Obliquus internus abdominis muscle
35. Transversus abdominis muscle
36. Iliacus muscle
37. Psoas major muscle
38. Gluteus maximus muscle
39. Piriformis muscle
40. Tensor fasciae latae muscle
41. Pecten of pubis
42. Obturator internus muscle
43. Sartorius muscle
44. Right femoral artery
45. Right femoral vein
46. Adductor longus muscle
47. Gracilis muscle
48. Vastus lateralis muscle
49. Rectus femoris muscle
50. Vastus medialis muscle
51. Hyoid bone
52. Left internal jugular vein
53. Left common carotid artery
54. Thyroid cartilage
55. Cricothyroid muscle
56. Thyroid gland
57. Trachea
58. Inferior thyroid vein
59. Clavicle
60. Left subclavian vein
61. Superior vena cava
62. Ascending aorta
63. Bronchus of left superior lobe
64. Bifurcation of trachea
65. Left principal bronchus
66. Esophagus
67. Descending aorta
68. Bronchus of left inferior lobe
69. Cardiac impression of lung
70. Diaphragm
71. Abdominal part of esophagus
72. Spleen
73. Celiac trunk
74. Hilum of spleen
75. Superior mesenteric artery
76. Left kidney
77. Left renal vein
78. Abdominal aorta
79. Left ureter
80. Left testicular artery
81. Left testicular vein
82. Crest of ilium
83. Left common iliac artery
84. Left common iliac vein
85. Promontory
86. Median sacral artery
87. Suprapiriform foramen
88. Sacral bone
89. Coccygeal muscle
90. Coccygeal bone
91. Left femoral artery
92. Left femoral vein
93. Superficial inguinal lymph nodes
94. Lymph vessel
95. Great saphenous vein

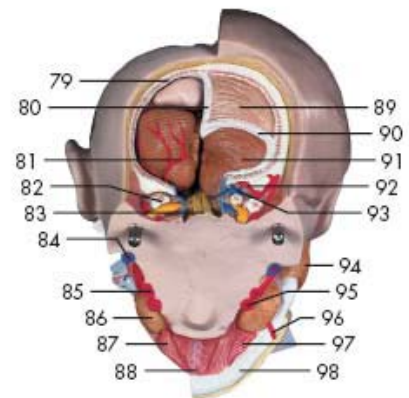
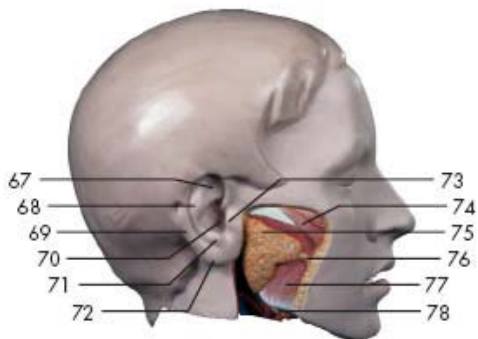
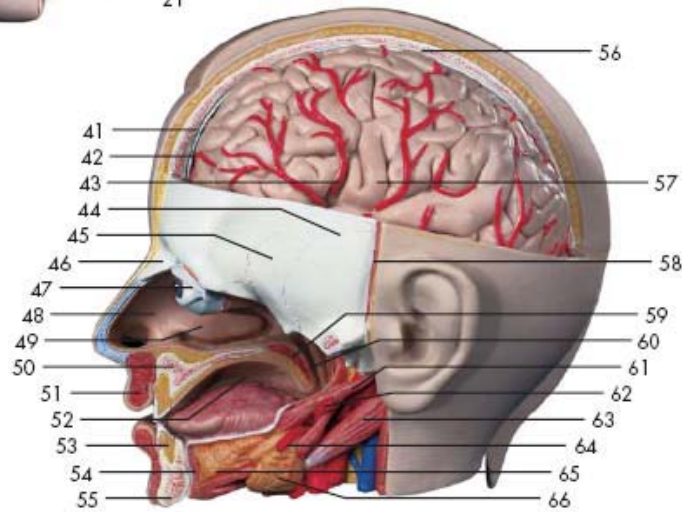
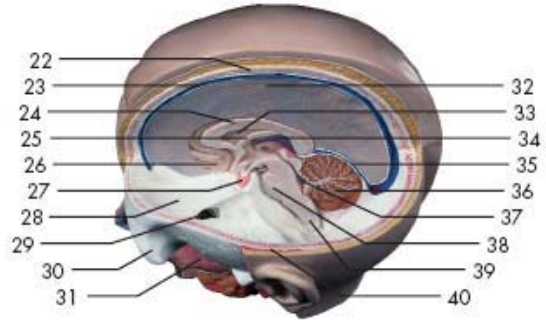
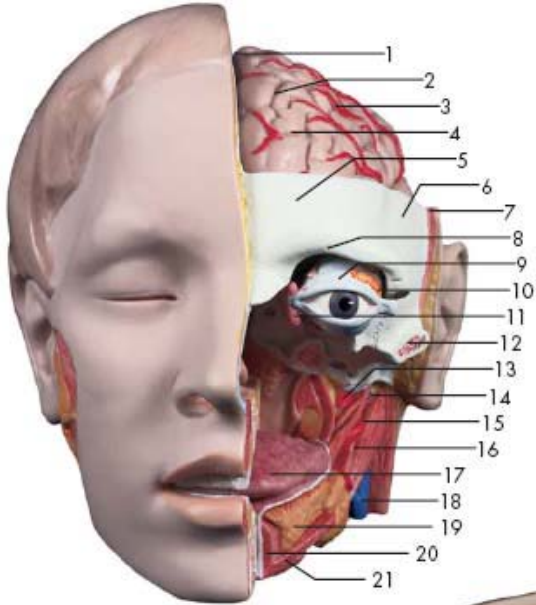
T2 – Trunk, with Open Back Section



T2 – Trunk, with Open Back Section

1. Cervical part of spinal marrow
 2. Left vertebral vein
 3. Posterior root of spinal nerve
 4. Right vertebral artery
 5. Scalenus posterior muscle
 6. Trapezius muscle, descending part
 7. Thoracic intertransverse muscles
 8. Trapezius muscle, transverse part
 9. Scapular spine
 10. Dura mater of spinal cord
 11. Deltoideus muscle
 12. Trapezius muscle, ascending part
 13. Infraspinatus muscle
 14. Teres minor muscle
 15. Intercostal vein, artery and nerve
 16. Teres major muscle
 17. Latissimus dorsi muscle
 18. Long head of triceps brachii muscle
 19. Serratus anterior muscle
 20. Iliocostalis thoracis muscle
 21. External intercostal muscles
 22. Ganglion of sympathetic trunk
 23. Vertebral arch
 24. Parietal pleura
 25. 12th rib
 26. Spinal ganglion (intervertebral ganglion)
 27. Medullary cone
 28. Lateral lumbar intertransverse muscles
 29. Quadratus lumborum muscle
 30. Obliquus externus abdominis muscle
 31. Thoracolumbar fascia
 32. Psoas major muscle
 33. Cauda equina
 34. Crest of ilium
 35. 5th lumbar vertebra, transverse process
 36. Gluteus maximus muscle
 37. Sacral bone, posterior surface
 38. Gluteal fascia
 39. Iliotibial tract
 40. Obturator internus muscles
 41. Adductor magnus muscle
 42. Semitendinosus muscle
 43. Semimembranosus muscle
 44. Adductor minimus muscle
 45. Adductor magnus muscle
 46. Sciatic nerve
 47. 3rd cervical vertebra, transverse process
 48. Posterior root of spinal nerve
 49. Acromion (acromial bone)
 50. Infraspinatus muscle
 51. Teres minor muscle
 52. Posterior internal vertebral venous plexus
 53. Vertebral body
 54. Interganglionic branch
 55. Vertebral canal
 56. 12th thoracic vertebra, spinous process
 57. Posterior superior iliac spine
 58. Gemellus superior muscle
 59. Gluteus medius muscle
 60. Obturator internus muscle
 61. Gemellus inferior muscle
 62. Quadratus femoris muscle
 63. Vastus lateralis muscle
 64. Gracilis muscle
- a. Thoracic vertebra**
1. Transverse process
 2. Superior articular process
 3. White substance of spinal cord
 4. Anterior horn of spinal cord
 5. Vertebral canal
 6. Intervertebral disc
 7. Spinous process
 8. Vertebral arch
 9. Posterior horn of spinal cord
 10. Central intermediate grey matter of spinal cord
 11. Posterior branch of spinal nerve
 12. Anterior branch of spinal nerve
 13. Spinal ganglion (intervertebral ganglion)
 14. Spinal nerve, communicating branch
 15. Vertebral body

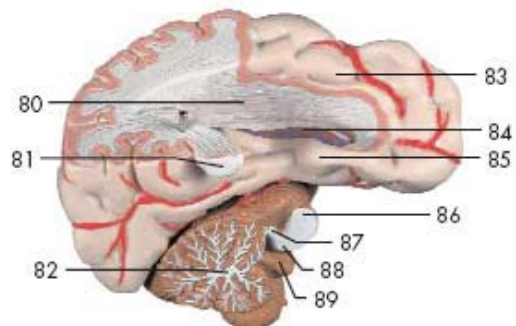
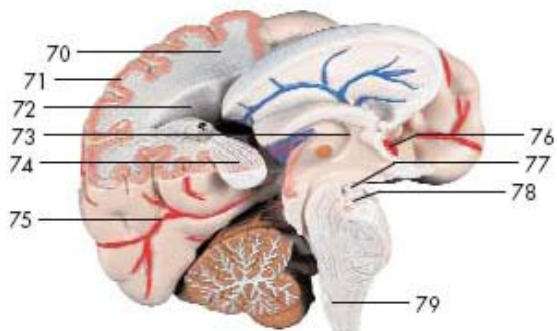
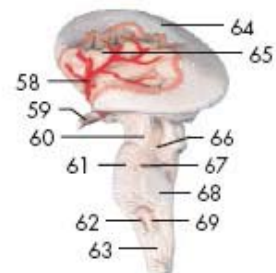
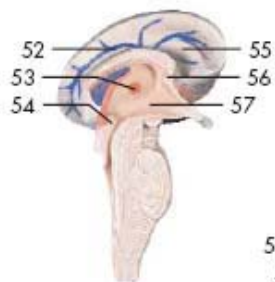
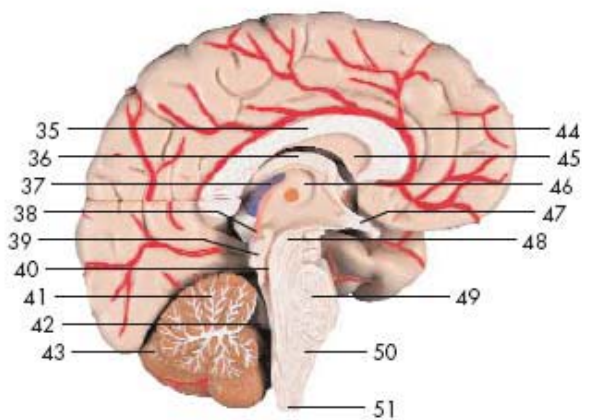
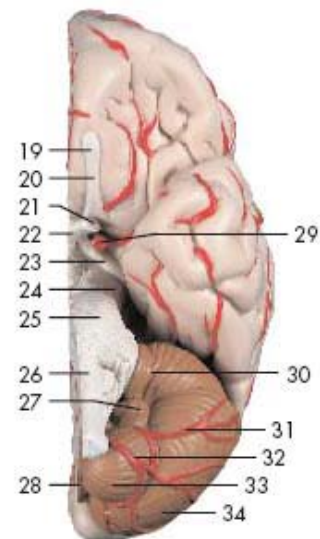
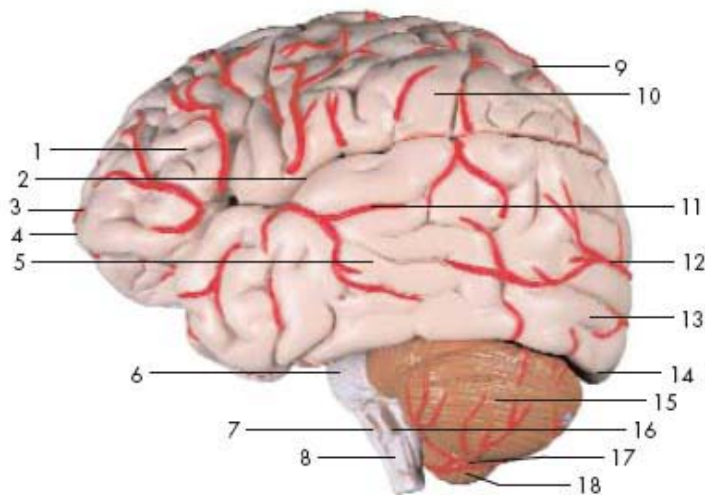
T2 – Head with Four-Part Brain



T2 – Head with Four-Part Brain

1. Longitudinal fissure of cerebrum
2. Superior frontal sulcus
3. Cerebral artery
4. Medial frontal gyrus
5. Frontal bone
6. Sphenoid bone
7. Temporalis muscle
8. Supraorbital foramen
9. Ball of the eye (ocular bulb)
10. Lacrimal gland
11. Lacrimal sac
12. Zygomatic bone
13. External carotid artery
14. Styloglossus muscle
15. Facial artery
16. Stylohyoideus muscle
17. Tongue
18. External jugular vein
19. Sublingual gland
20. Genioglossus muscle
21. Mylohyoideus muscle
22. Parietal bone
23. Superior sagittal sinus
24. Trunk of corpus callosum
25. Fornix
26. Subcallosal area
27. Pituitary gland
28. Anterior cranial fossa
29. Oval foramen of sphenoid bone
30. Zygomatic bone
31. Tongue
32. Falx of cerebrum
33. Pellucid septum
34. Choroid plexus
35. Straight sinus
36. Cerebellum
37. Fourth ventricle
38. Pons
39. Medulla oblongata
40. Temporalis muscle
41. Frontal bone
42. Dura mater of brain
43. Middle cerebral artery
44. Temporal bone
45. Sphenoid bone
46. Nasal bone
47. Superior tarsus
48. Cavum of nose
49. Inferior turbinate bone
50. Maxillary bone
51. Orbicularis oris muscle
52. Hard palate
53. First incisor
54. Genioglossus muscle
55. Mandible
56. Parietal bone
57. Left telencephalic hemisphere
58. Temporalis muscle
59. Muscle of uvula
60. Pharynx
61. Styloglossus muscle
62. External carotid artery
63. Posterior belly of digastric muscle
64. Facial artery
65. Sublingual gland
66. Submandibular gland
67. Triangular fossa
68. Antihelix
69. Helix
70. External acoustic meatus
71. Antitragus
72. Ear lobule
73. Tragus
74. Zygomaticus major muscle
75. Parotid gland
76. Parotid duct
77. Masseter muscle
78. Submandibular gland
79. Occipital bone
80. Falx of cerebrum
81. Posterior inferior cerebellar artery
82. Atlas
83. Cervical part of spinal marrow
84. Internal jugular vein
85. Internal carotid artery
86. Submandibular gland
87. Anterior belly of digastric muscle
88. Mylohyoid raphe
89. Cerebrum
90. Tentorium of cerebellum
91. Cerebellum
92. Vertebral artery
93. Vertebral vein
94. Parotid gland
95. External carotid artery
96. Angular artery
97. Mylohyoideus muscle
98. Mandible

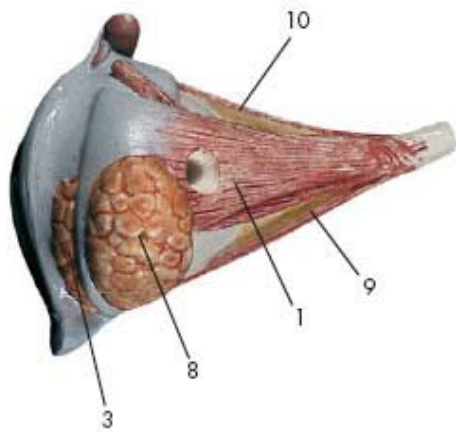
T2 – 4-Part Brain Hemisphere



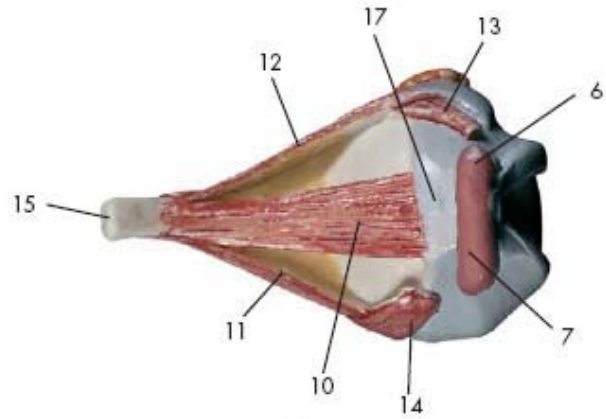
T2 – 4-Part Brain Hemisphere

1. Frontal lobe
2. Lateral sulcus
3. anterior cerebral artery
4. Frontal pole
5. Temporal lobe
6. Pons
7. Hypoglossal nerve
8. Medulla oblongata
9. Anterior cerebral artery
10. Parietal lobe
11. Middle cerebral artery
12. Posterior cerebral artery
13. Occipital lobe
14. Occipital pole
15. Cerebellar hemisphere
16. Vagus nerve and glossopharyngeal nerve
17. Posterior inferior cerebellar artery
18. Cerebellar tonsil
19. Olfactory bulb
20. Olfactory tract
21. Optic nerve
22. Optic chiasm
23. Optic tract
24. Peduncle of cerebrum
25. Pons
26. Medulla oblongata
27. Floccule
28. Worm of cerebellum vermis
29. Internal carotid artery
30. Cerebellar hemisphere, superior surface
31. Anterior inferior cerebellar artery
32. Posterior inferior cerebellar artery
33. Cerebellar tonsil
34. Cerebellar hemisphere, inferior surface
35. Trunk of corpus callosum
36. Fornix
37. Choroid plexus
38. Pineal body
39. Lamina quadrigemina
40. Cerebral aqueduct
41. Arbor vitae
42. Fourth ventricle
43. Cerebellar hemisphere
44. Anterior cerebral artery
45. Pellucid septum
46. Thalamus
47. Optic nerve
48. Mesencephalic tegmentum
49. Pons
50. Medulla oblongata
51. Spinal marrow
52. Thalamostriatic vein
53. Interthalamic connexus
54. Posterior commissure
55. Caudate nucleus
56. Anterior commissure
57. Third ventricle
58. Middle cerebral artery
59. Optic nerve
60. Peduncle of cerebrum
61. Pons
62. Hypoglossal nerve
63. Medulla oblongata
64. Internal capsule
65. Insula
66. Trochlear nerve
67. Trigeminal nerve
68. Middle cerebellar peduncle
69. Vagus nerve and glossopharyngeal nerve
70. White substance of cerebrum
71. Gray substance of cerebrum
72. Posterior horn of lateral ventricle
73. Interventricular foramen
74. Radiation of corpus callosum
75. Posterior cerebral artery
76. Middle cerebral artery
77. Mamillary body
78. Oculomotor nerve
79. Central canal
80. Lateral ventricle
81. Splenium of corpus callosum
82. Medullar body of cerebellum
83. Temporal lobe
84. Choroid plexus
85. Uncus of hippocampus
86. Middle cerebellar peduncle
87. Superior cerebellar peduncle
88. Inferior cerebellar peduncle
89. Floccule

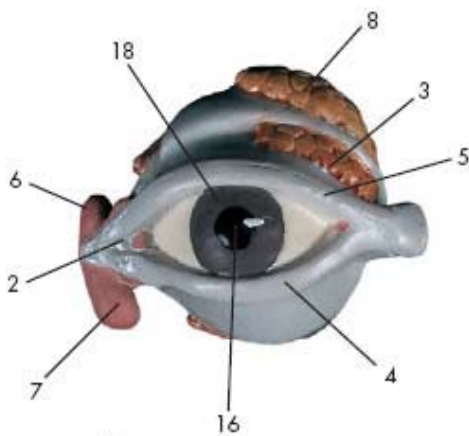
T2 – Eye, Open



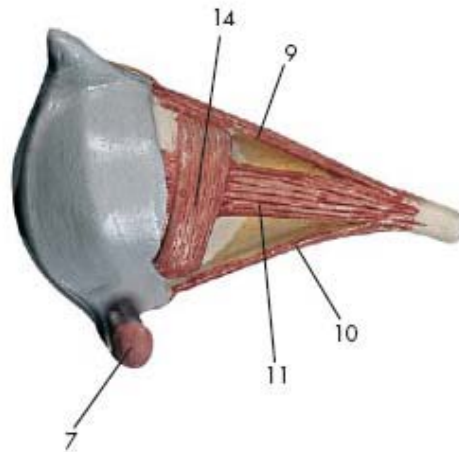
a1



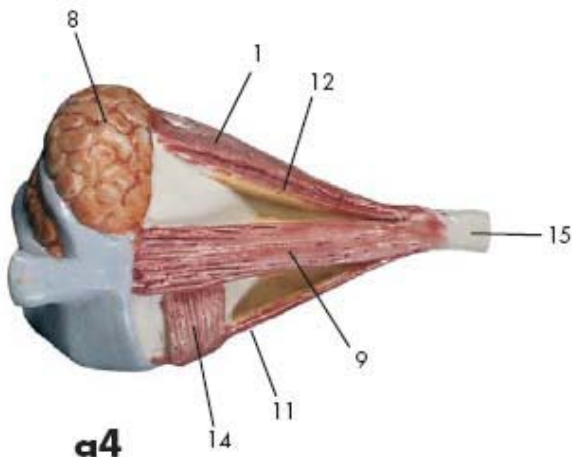
a2



a3



a5



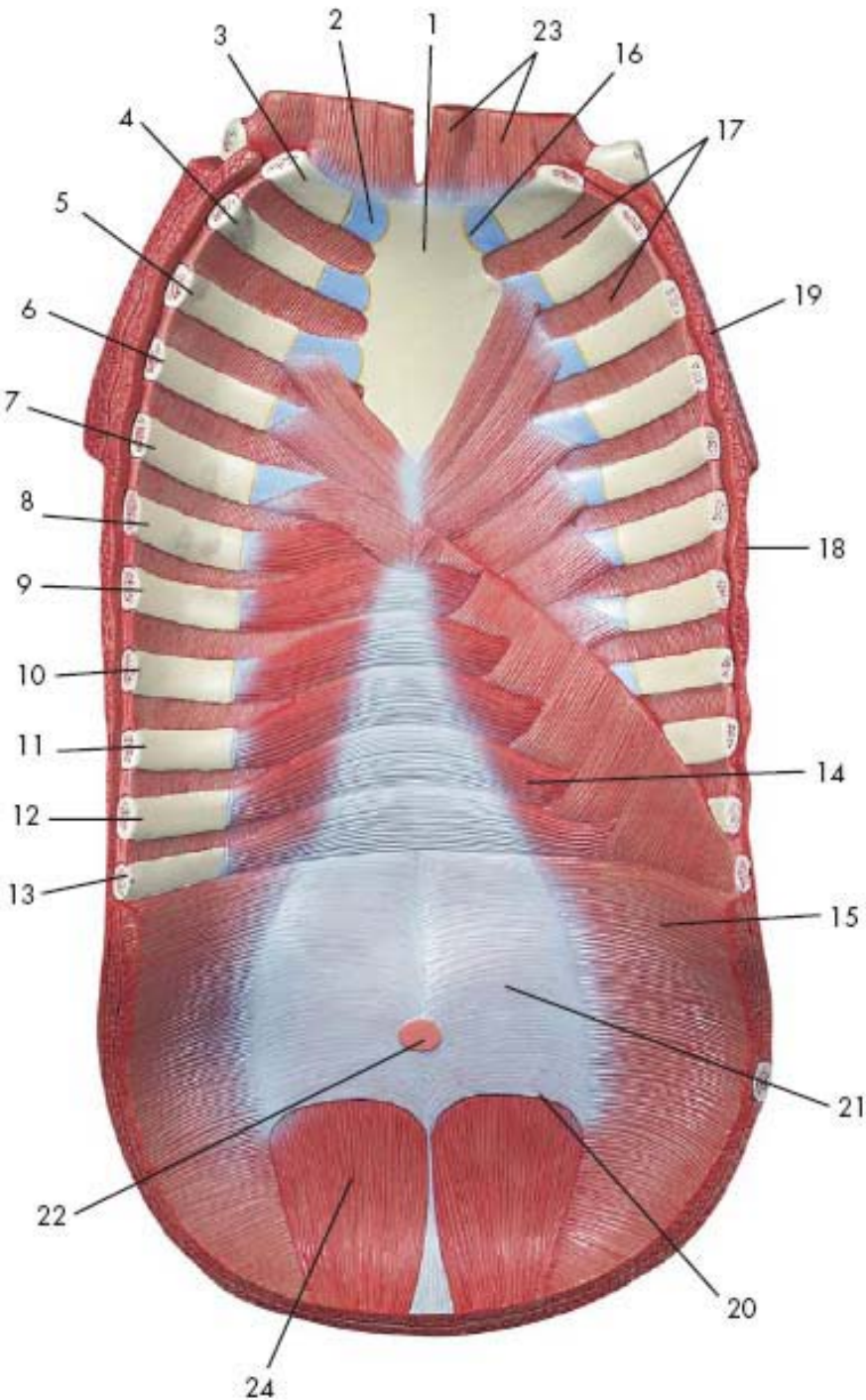
a4

T2 – Eye, Open

- a1 Eye, Superior view**
- a2 Eye, medial view**
- a3 Eye, anterior view**
- a4 Eye, lateral view**
- a5 Eye, inferior view**

1. Levator palpebrae superioris muscle
2. Middle palpebral ligament
3. Palpebral part of lacrimal gland
4. Inferior palpebra (eyelid)
5. Superior palpebra (eyelid)
6. Fornix of lacrimal sac
7. Lacrimal sac
8. Orbital part of lacrimal gland
9. Rectus lateralis muscle
10. Rectus medialis muscle
11. Rectus inferior muscle
12. Rectus superior muscle
13. Tendon of Obliquus superior muscle
14. Obliquus inferior muscle
15. Optic nerve
16. Pupil
17. Ball of the eye (ocular bulb)
18. Iris

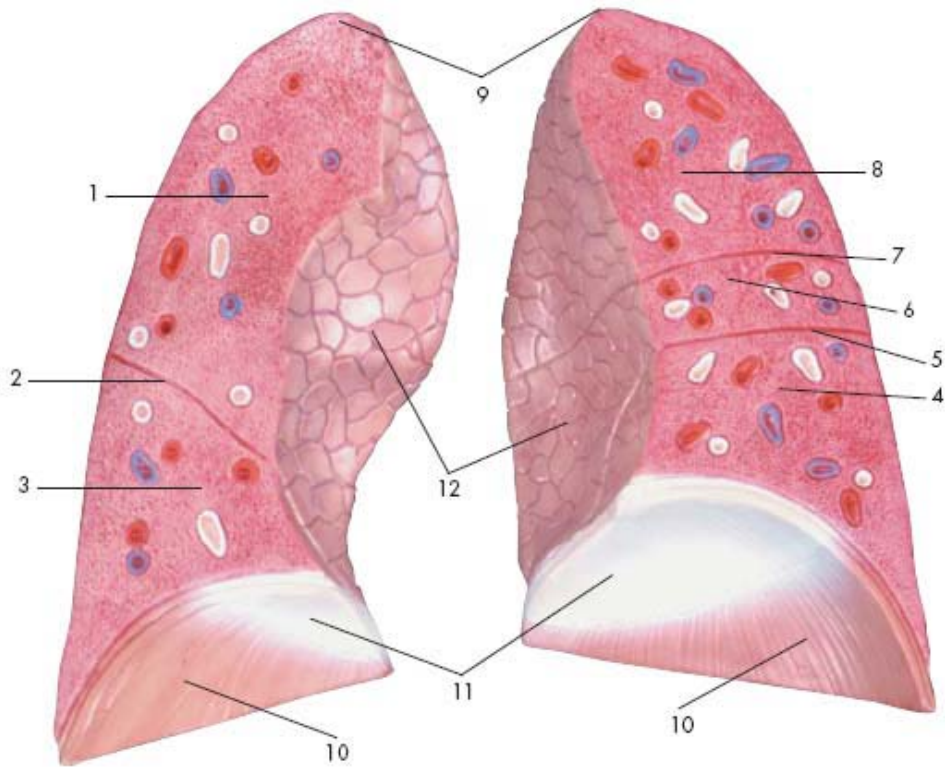
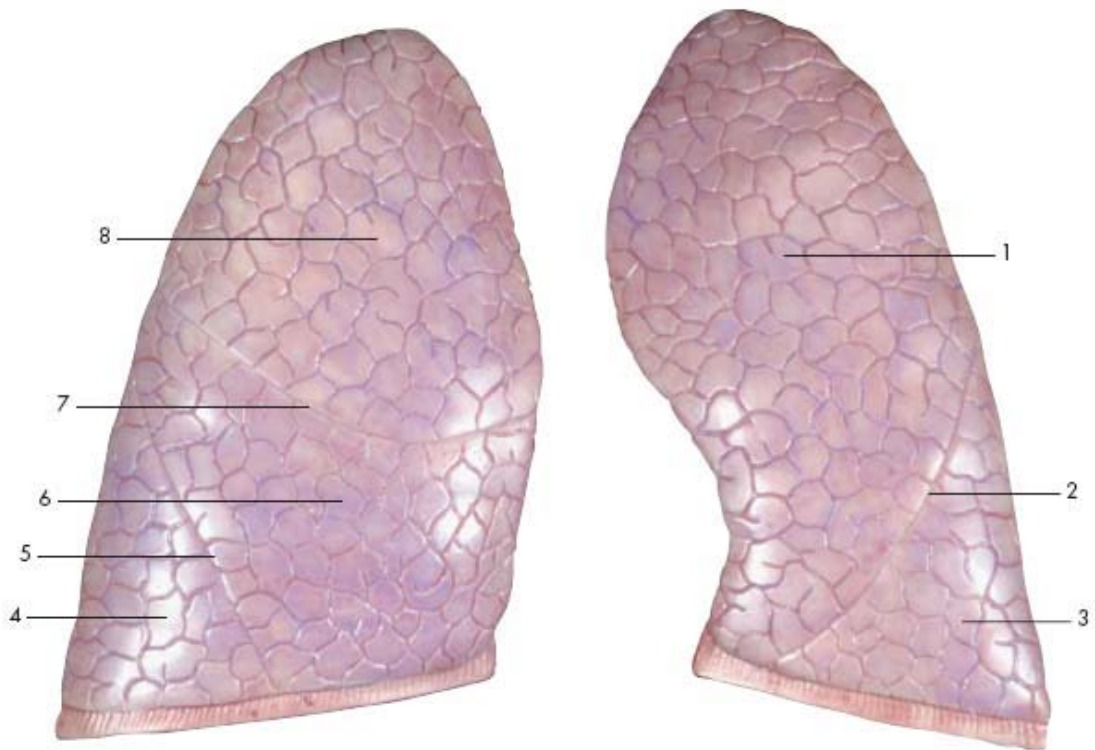
T2 – Chest Wall & Abdominal Wall Muscles



T2 – Chest Wall & Abdominal Wall Muscles

1. Manubrium of sternum
2. Costicartilage
3. First rib
4. Second rib
5. 3rd rib
6. 4th rib
7. 5th rib
8. 6th rib
9. 7th rib
10. 8th rib
11. 9th rib
12. 10th rib
13. 11th rib
14. Transversus thoracis muscle
15. Transversus abdominis muscle
16. Sternocostal joint
17. Internal intercostal muscles
18. Serratus anterior muscle
19. Pectoralis major muscle
20. Arcuate line
21. Sheath of rectus abdominis muscle
22. Umbilicus
23. Sternocleidomastoideus muscle
24. Rectus abdominis muscle

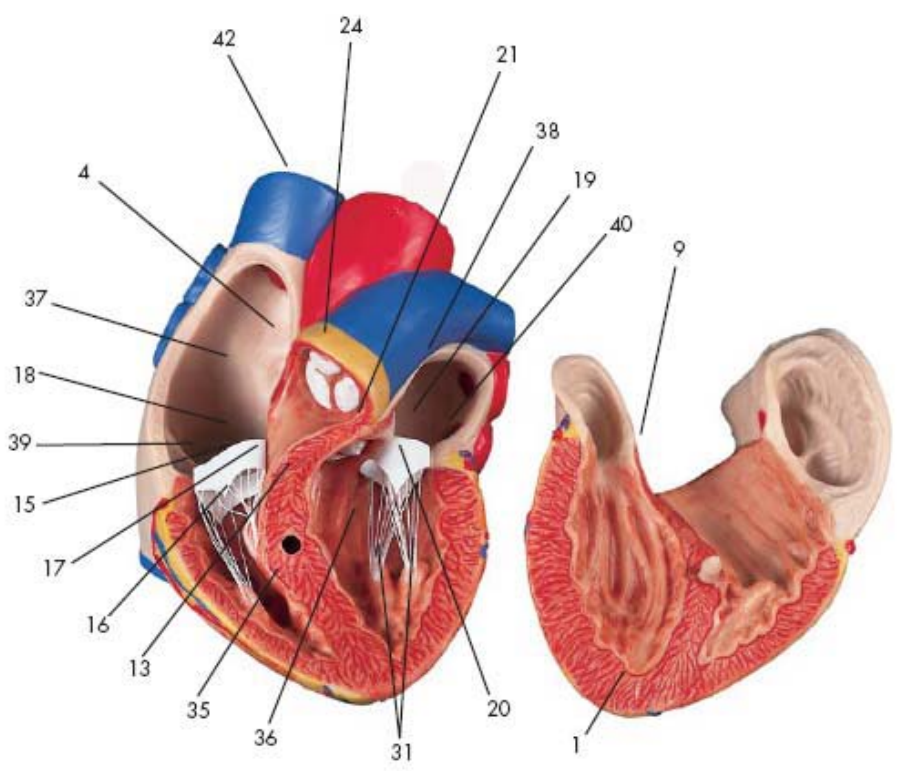
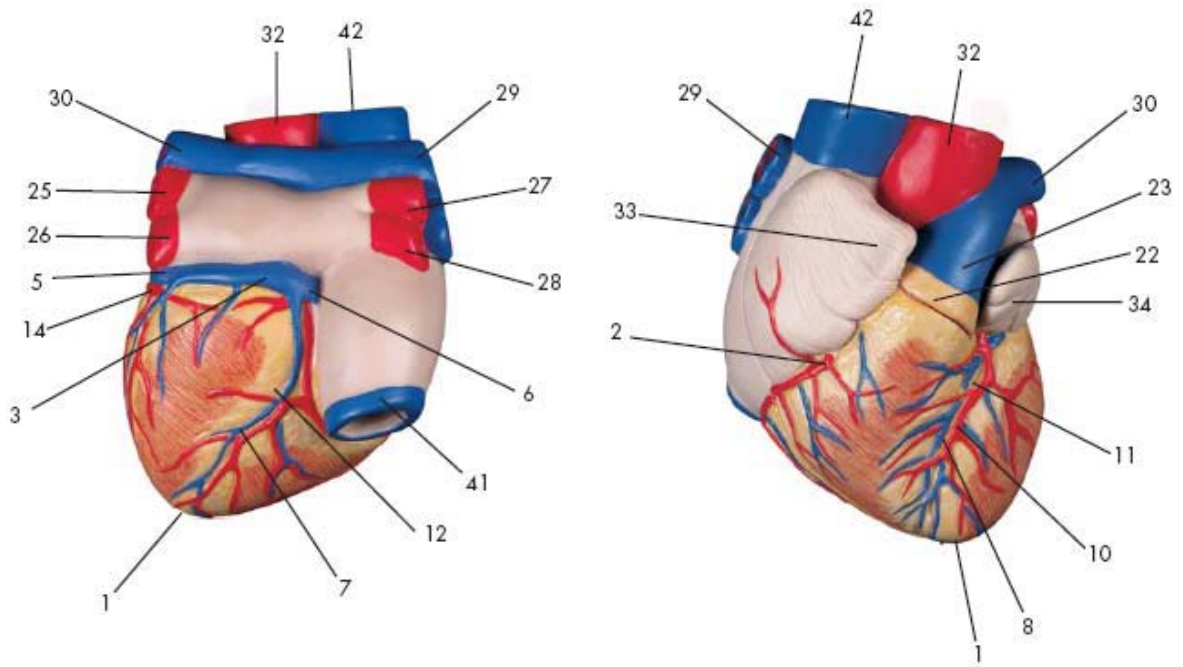
T2 – Lungs



T2 – Lungs

1. Left superior pulmonary lobe
2. Oblique fissure of left lung
3. Left inferior pulmonary lobe
4. Right inferior pulmonary lobe
5. Oblique fissure of right lung
6. Right middle pulmonary lobe
7. Horizontal fissure of right lung
8. Right superior pulmonary lobe
9. Apex of lung
10. Costal part of diaphragm
11. Tendinous centre (phrenic centre)
12. Cardiac impression of lung

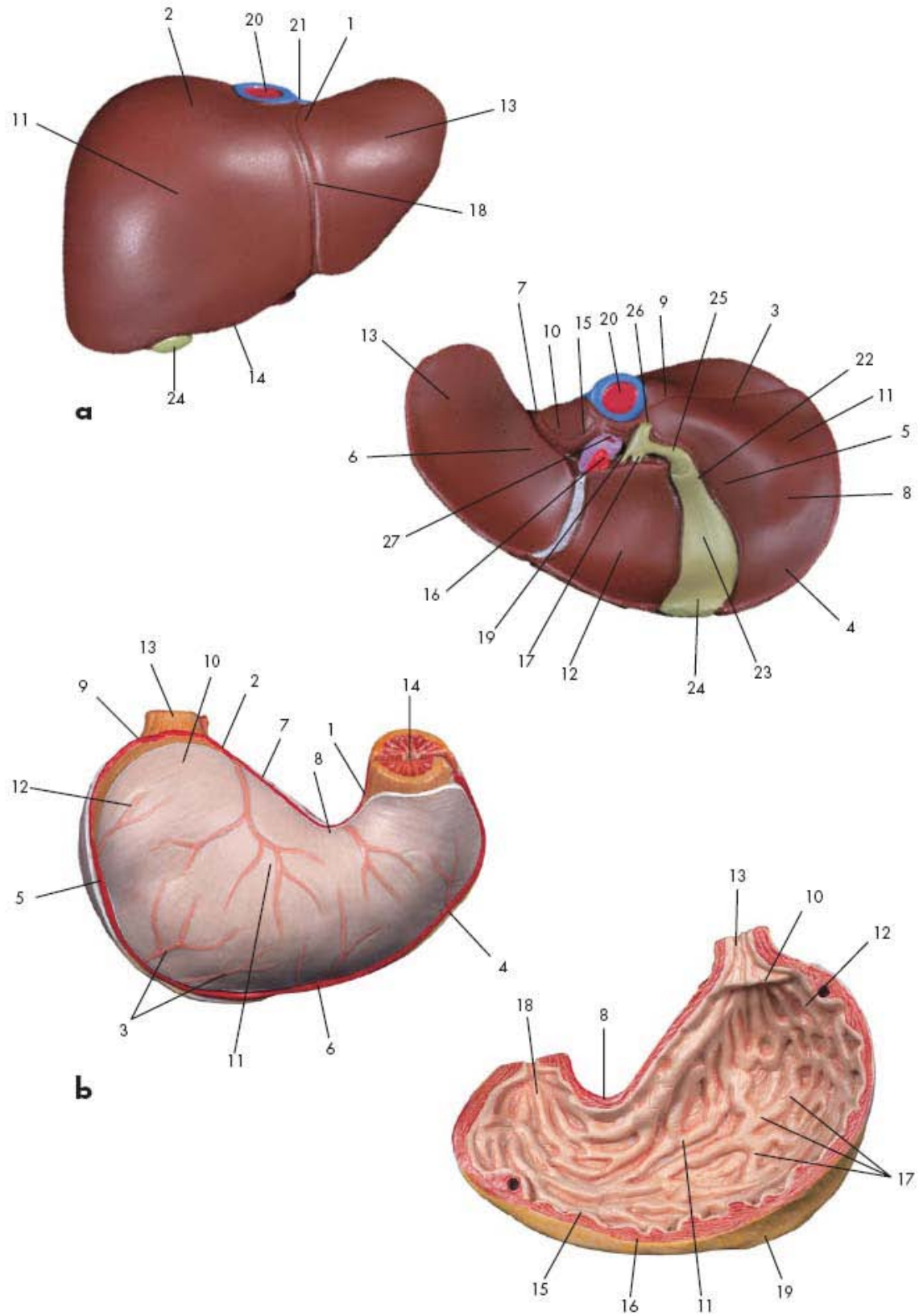
T2 - Heart



T2 - Heart

1. Apex of heart
2. Right coronary artery of heart
3. Coronary sinus
4. Oval fossa of heart
5. Left coronary vein
6. Small cardiac vein
7. Posterior Interventricular vein
8. Anterior Interventricular vein
9. Membranous part of Interventricular septum
10. anterior Interventricular branch of left coronary artery
11. Anterior Interventricular sulcus
12. Posterior Interventricular sulcus
13. Muscular part of Interventricular septum
14. Circumflex branch of left coronary artery
15. Right anterior atrioventricular cusp
16. Right posterior atrioventricular cusp
17. Septal cusp
18. Tricuspid valve (right AV-valve)
19. Mitral valve (left AV-valve)
20. Left anterior atrioventricular cusp
21. Left semilunar cusp of aortic valve
22. Pulmonary trunk
23. Pulmonary artery
24. Anterior semilunar cusp of pulmonary trunk
25. Superior left pulmonary vein
26. Inferior left pulmonary vein
27. Superior right pulmonary vein
28. Inferior right pulmonary vein
29. Right pulmonary artery
30. Left pulmonary artery
31. Papillary muscles
32. Ascending aorta
33. Right auricle
34. Left auricle
35. Right ventricle
36. Left ventricle
37. Right atrium
38. Left atrium
39. Right fibrous ring
40. Left fibrous ring
41. Inferior vena cava
42. Superior vena cava

T2 – Liver and Open Stomach



T2 – Liver and Open Stomach

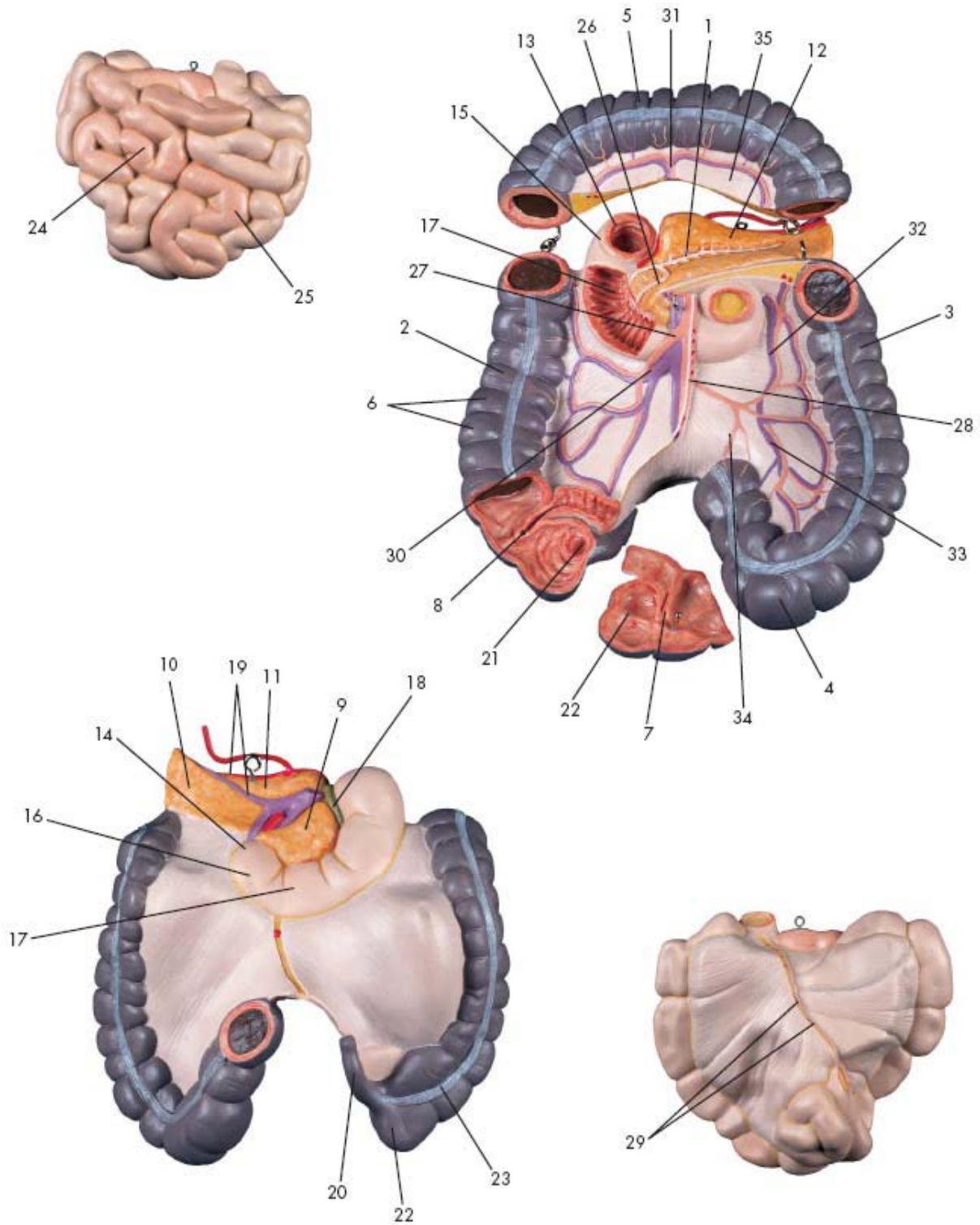
a Liver

1. Bare area of liver
2. Diaphragmatic surface of hepar
3. Visceral surface of hepar
4. Colic impression of liver
5. Duodenal impression of liver
6. Gastric impression of liver
7. Esophageal impression of liver
8. Renal impression of liver
9. Suprarenal impression of liver
10. Caudate lobe of liver
11. Right lobe of liver
12. Quadrate lobe of liver
13. Left lobe of liver
14. Inferior margin of liver
15. Caudate process of liver
16. Common hepatic artery
17. Right hepatic duct
18. Falciform ligament of liver
19. Left hepatic duct
20. Inferior vena cava
21. Hepatic veins
22. Neck of gallbladder
23. Body of gallbladder
24. Fundus of gallbladder
25. Cystic duct
26. Common bile duct
27. Portal vein of liver

b Stomach

1. Right gastric artery
2. Left gastric artery
3. Short gastric arteries
4. Right gastroepiploic artery
5. Left gastroepiploic artery
6. Major gastric curvature
7. Minor gastric curvature
8. Angular notch of stomach
9. Cardiac notch of stomach
10. Cardiac part of stomach
11. Body of stomach
12. Fundus of stomach
13. Abdominal part of esophagus
14. Pylorus
15. Mucosa of stomach
16. Muscular coat of stomach
17. Gastric folds
18. Pyloric antrum (pyloric canal)
19. Greater omentum

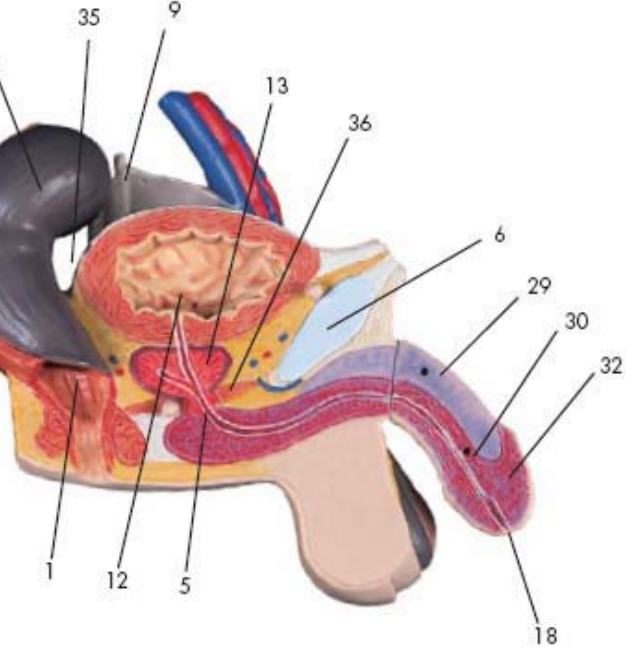
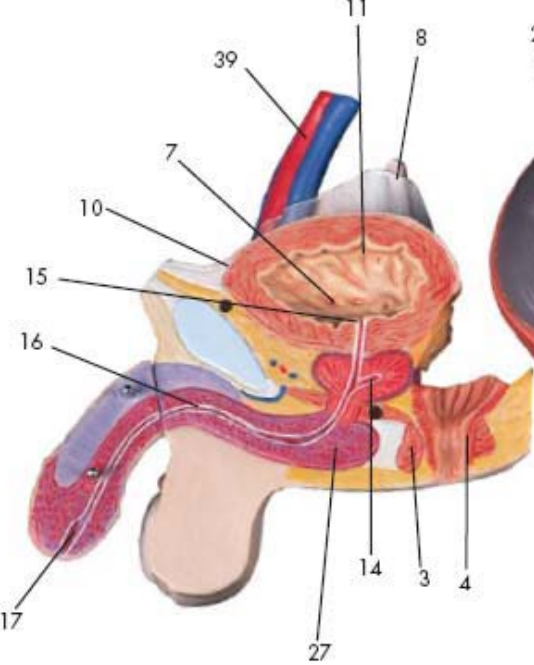
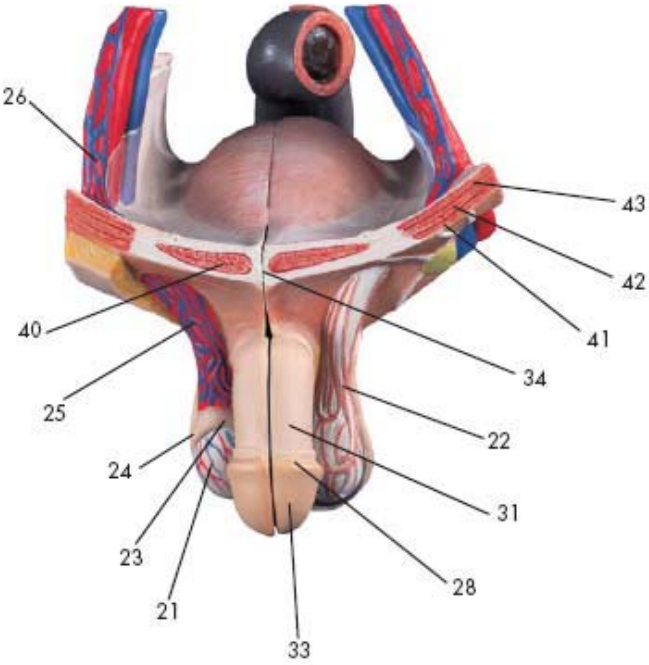
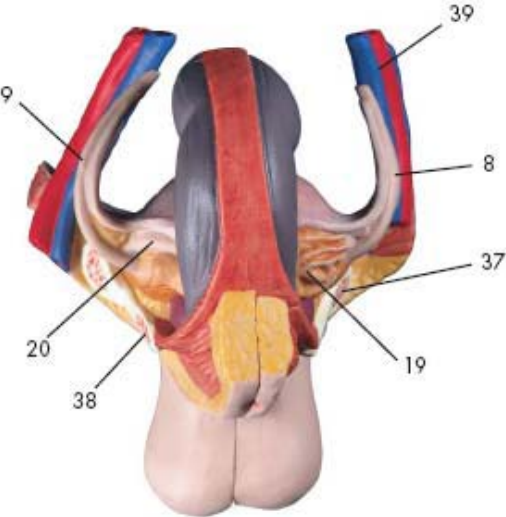
T2 – Small & Large Intestine



T2 – Small & Large Intestine

1. Pancreatic duct
2. ascending colon
3. Descending colon
4. Sigmoid colon (pelvic colon)
5. Transverse colon
6. Haustra of colon (Sacculations of colon)
7. Ostium of Ileocecal valve
8. Ileocecal valve
9. Pancreatic head
10. Pancreatic cauda (pancreatic tail)
11. Pancreatic body
12. Pancreas
13. Duodenum
14. inferior duodenal flexure
15. Superior duodenal flexure
16. Ascending part of duodenum
17. Descending part of duodenum
18. Common bile duct
19. Splenic artery and vein (lienal artery and vein)
20. Vermiform appendage
21. Ostium of vermiform appendage
22. Cecum (blind sac)
23. Free taenia (taenia coli)
24. Ileum
25. Jejunum
26. Santorini's duct
27. Superior mesenteric artery and vein
28. Inferior mesenteric artery and vein
29. Jejunal and ileal arteries and veins
30. Right colic artery and vein
31. Middle colic artery and vein
32. Left colic artery and vein
33. Sigmoid arteries and veins
34. Superior rectal artery
35. Mesentery of transverse colon

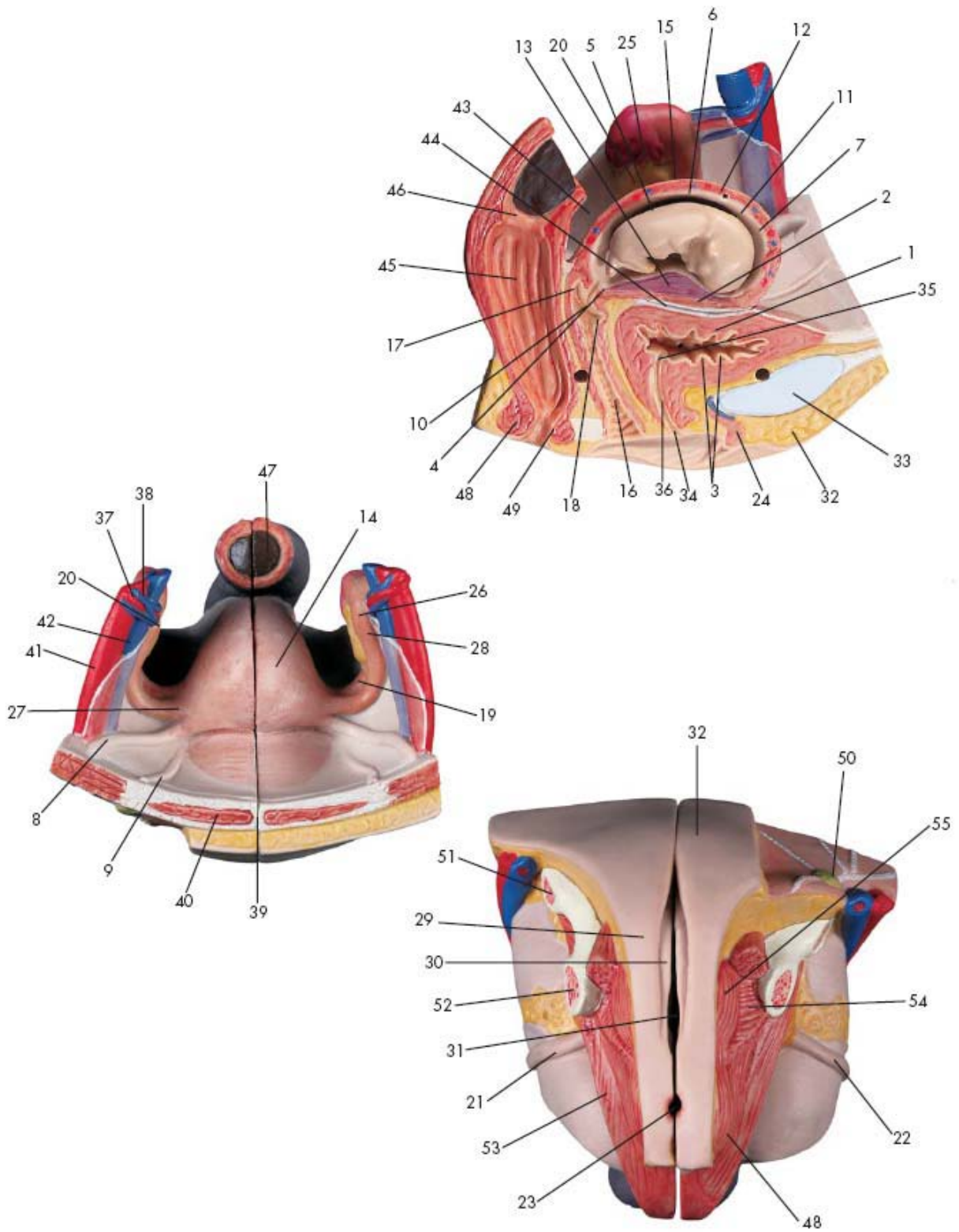
T2 – Male Genital Organs



T2 – Male Genital Organs

1. Rectal ampulla
2. Rectum
3. Sphincter ani externus muscles
4. Sphincter ani internus muscle
5. Sphincter urethrae muscle
6. Pubic symphysis
7. Ureteric orifice
8. Right ureter
9. Left ureter
10. Apex of urinary bladder
11. Body of bladder
12. Vesical Trigone
13. Prostate
14. Prostatic utricle
15. Internal urethral orifice
16. Spongy part of masculine urethra
17. Navicular fossa of urethra (great lacuna of urethra)
18. External opening of masculine urethra
19. Seminal vesicle
20. Deferent duct (spermatic duct)
21. Testis
22. Cremasteric fascia
23. Head of epididymis
24. Cauda of epididymis
25. Spermatic plexus
26. Right testicular artery and vein
27. Bulbus penis
28. Corona of glans
29. Cavernous body of penis
30. Spongy body of penis
31. Superficial fascia of penis
32. Glans of penis
33. Prepuce of penis
34. White line of abdomen (linea alba)
35. Rectovesical excavation
36. Transversus perineae profundus muscle
37. Ascending ramus of pubis
38. Descending ramus of pubis (inferior pubic ramus)
39. Right external iliac artery and vein
40. Rectus abdominis muscle
41. Obliquus externus abdominis muscle
42. Obliquus internus abdominis muscle
43. Transversus abdominis muscle

T2 – Female Genital Organs



T2 – Female Genital Organs

1. Bladder
2. Vesical surface of uterus
3. Mucosal folds of urinary bladder
4. Cervical canal of uterus
(uterocervical canal)
5. Uterine cavity
6. Uterine body
7. Fundus of uterus
8. Round ligament of uterus
9. Medial umbilical fold
10. Vaginal part of cervix uteri
11. Uterine mucosa (endometrium)
12. Muscular coat of uterus
(myometrium)
13. Placenta
14. Uterus
15. Intestinal surface of uterus
16. Vagina
17. Posterior fornix (fundus) of vagina
18. Anterior fornix (fundus) of vagina
19. Ovarian ligament
20. Ovary
21. Right ureter
22. Left ureter
23. Anus (anal orifice)
24. Cavernous body of clitoris
25. Fimbriae of uterine tube
26. Infundibulum of uterine tube
27. Isthmus of uterine tube
28. Ampulla of uterine tube
29. Greater pudendal lip
30. Lesser pudendal lip
31. Vaginal introitus
32. Mons pubis
33. Pubic symphysis
34. External opening of feminine urethra
35. Internal urethral orifice
36. Urethra
37. Ovarian artery
38. Ovarian vein
39. White line of abdomen (linea alba)
40. Rectus abdominis muscle
41. External iliac artery
42. External iliac vein
43. Rectouterine excavation
(Rectouterine pouch)
44. Vesicouterine excavation
45. Rectal ampulla
46. Transverse Rectal fold
47. Rectum
48. Sphincter ani externus muscle
49. Sphincter ani internus muscle
50. Superficial inguinal lymph nodes
51. Ascending ramus of pubis
52. Descending ramus of pubis (inferior
pubic ramus)
53. Levator ani muscle
54. Puborectalis muscle
55. Bulbospongiosus muscle