

Effectiveness Update

Academic Programs Transfer Effectiveness Measures
Report for Academic Year 2000 - 2001



PURPOSE

To prepare students for successful college or university transfer.

INTENDED OUTCOME

1A. First-time-in-College (FTIC) students who have earned at least 15 semester credit hours (SCH) in baccalaureate transfer courses will transfer to a four-year college or university within four years of their initial enrollment at ACC.

CRITERION

ACC's transfer rate will be higher than the statewide transfer rate for FTIC students majoring in a transfer program who have earned at least 15 SCH in two semesters .

RESULTS

Based on data from the Texas Higher Education Coordinating Board, ACC's transfer rate is 1.8% higher than the statewide rate for the 1995 FTIC Cohort students majoring in academic programs who have earned at least 15 SCH in at least two semesters. Of the 1,394 ACC 1995 FTIC Cohort students not still enrolled in a community college, 513 or 36.8% had transferred to a senior institution by Fall 2000. Of the 26,778 Statewide 1995 FTIC Cohort students not still enrolled in a community college, 9,377 or 35.0% had transferred to a senior institution by Fall 2000.

DATA

Comparison of ACC and Statewide Transfer Rates
Students Majoring in Academic Programs
FTIC Fall 1995 Cohort

	Total FTIC Fall 1995 Cohort Students in Academic Majors 15 Semester Credit Hours and Two Semesters	Still Enrolled Fall 2000	Cohort Less Still Enrolled Fall 2000	Transferred	Transfer Rate
ACC	2,104	710	1,394	513	36.8%
Statewide	39,323	12,545	26,778	9,377	35.0%
Difference					1.8%

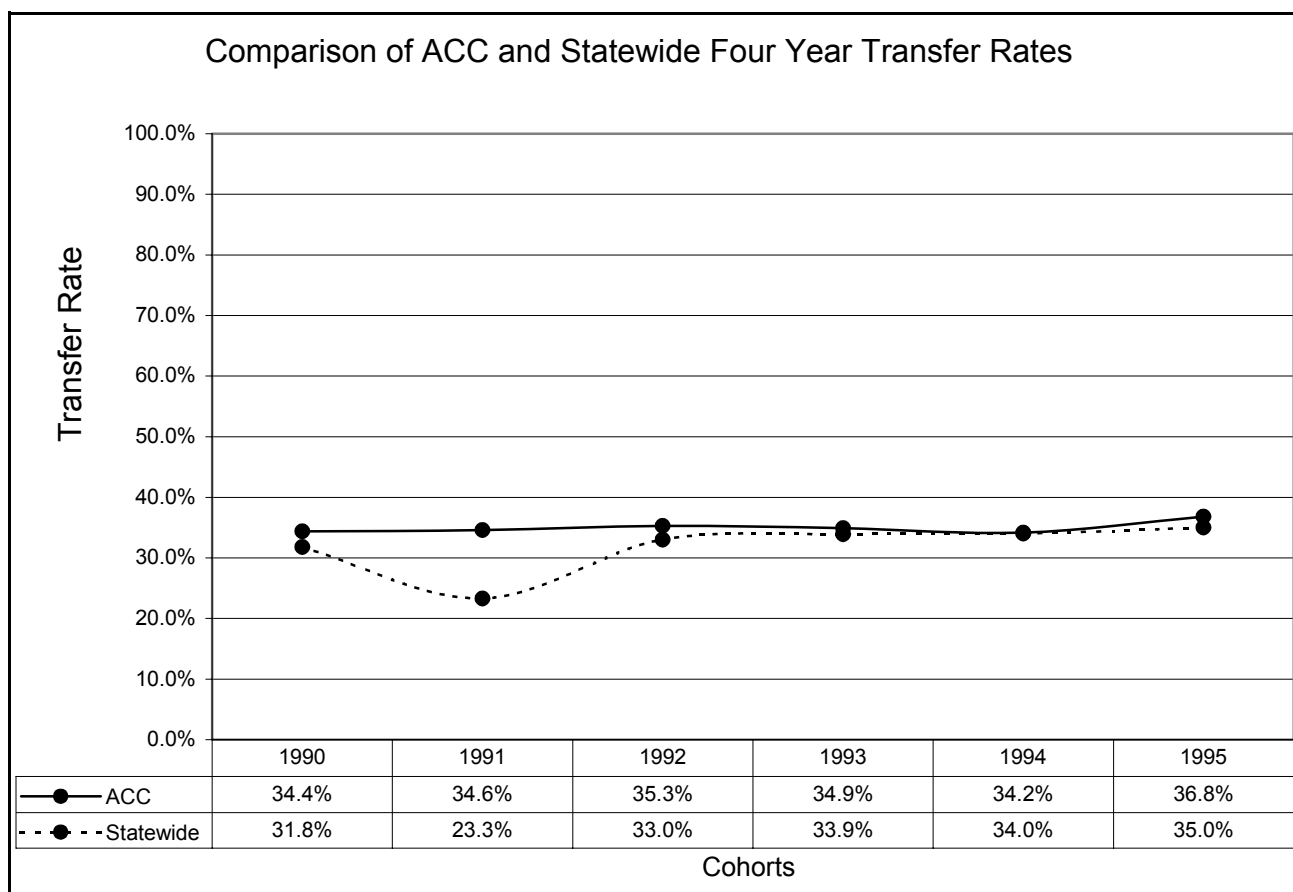
Source: THECB *Transfer Rate Study*, September 2000

Academic Programs Transfer Effectiveness Measures Report 2000-01 (continued)

TREND DATA

Comparison data for ACC and statewide transfer rates for cohorts from 1990 through 1995 indicate the following:

- ACC's transfer rate has been consistently higher than the statewide rate
- The difference between ACC's rate and the statewide rate has ranged from 0.2% greater for the 1994 cohort to 11.3% greater for the 1991 cohort.
- ACC's transfer rate has generally increased over time. However, so has the statewide rate.
- Just over one third of ACC students majoring in academic programs and just under one third of students statewide majoring in academic programs transfer .



Source: THECB *Transfer Rate Study*

Academic Programs Transfer Effectiveness Measures Report 2000-01 (continued)

INTENDED OUTCOME

1B. Minority FTIC students who have earned at least 15 SCH in baccalaureate transfer courses will transfer to a four-year college or university within four years of their initial enrollment at ACC.

CRITERION

The THECB Community College Transfer Rate Study will indicate ACC's transfer rate for minority FTIC students with a declared major in a transfer program will be higher than the statewide rate.

RESULTS

Based on data from the THECB, for the FTIC 1995 Cohort, ACC's transfer rate is higher than the statewide rate for Black, Hispanic, and Other Minority* students, but lower than the statewide transfer rate for White students.

*"Other Minority" includes Asian, American Indian, and International students.

DATA

Comparison of ACC and Statewide Four Year Transfer Rates by Ethnicity
Students Majoring in Academic Programs
Fall FTIC 1995 Cohort

Cohort Students by Ethnicity	Fall 1995 FTIC Cohort		
	Cohort Less Still Enrolled	Transferred by 2000	Transfer Rate
ACC White Students	918	359	39.1%
<i>Statewide White Students</i>	<i>16,608</i>	<i>6,795</i>	<i>40.9%</i>
<i>Difference</i>			<i>- 1.8%</i>
ACC Black Students	63	18	28.6%
<i>Statewide Black Students</i>	<i>2,327</i>	<i>514</i>	<i>22.1%</i>
<i>Difference</i>			<i>+6.5%</i>
ACC Hispanic Students	273	70	25.6%
<i>Statewide Hispanic Students</i>	<i>6,506</i>	<i>1,521</i>	<i>23.4%</i>
<i>Difference</i>			<i>+2.2%</i>
ACC Other Minority* Students	140	66	47.1%
<i>Statewide Other Students</i>	<i>1,337</i>	<i>547</i>	<i>40.9%</i>
<i>Difference</i>			<i>+6.2%</i>

Source: THECB Transfer Rate Study, September 2000

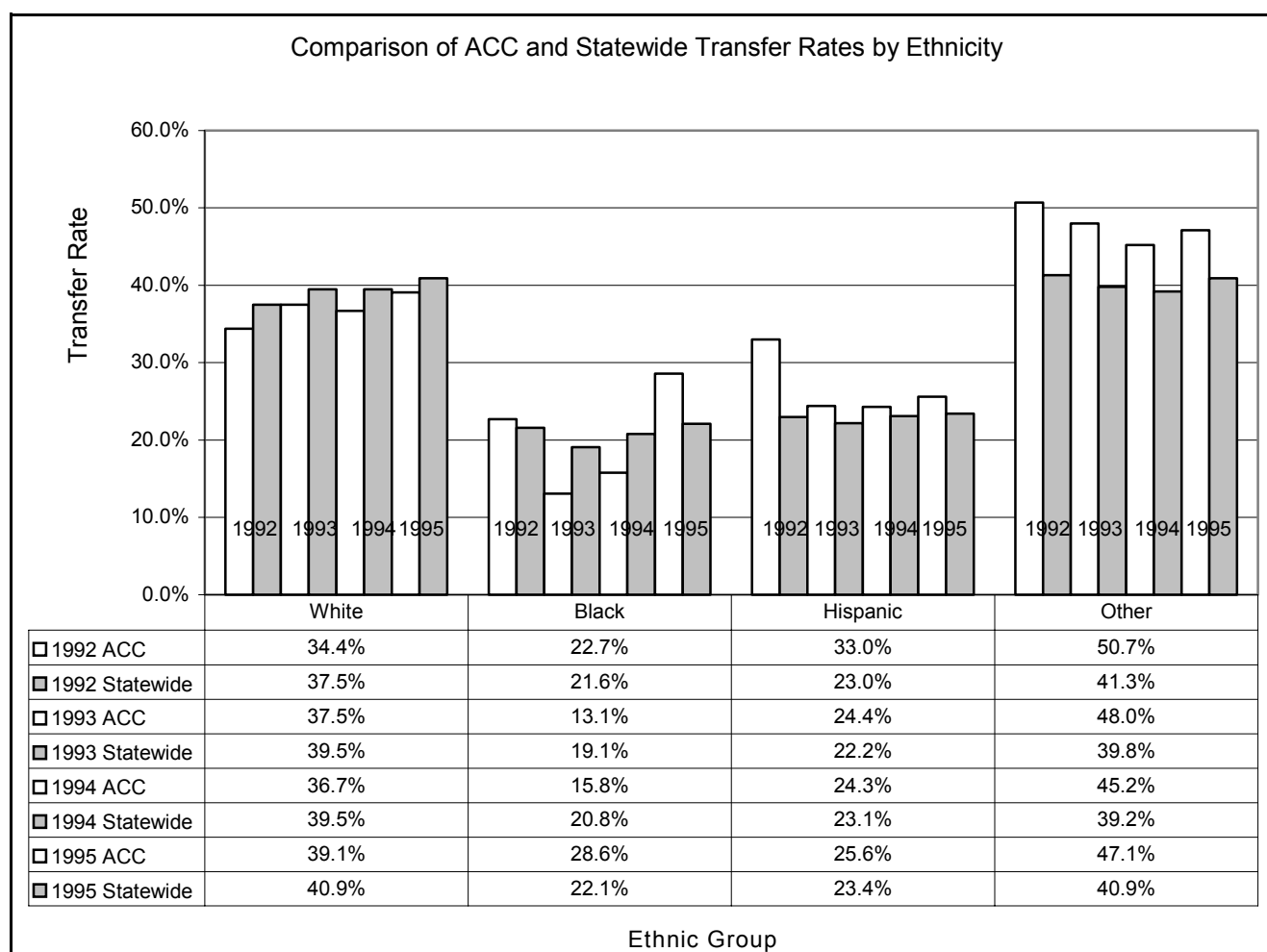
Academic Programs Transfer Effectiveness Measures Report 2000-01 (continued)

TREND DATA

Data for the 1992-1995 cohorts indicate the following:

- The transfer rate for ACC's Hispanic and Other Minority* students majoring in academic programs has been consistently higher than for Hispanic students statewide.
 - ACC's Hispanic student transfer rate has been steadily increasing (though slightly) since the 1993 cohort.
 - ACC's Other Minority* student transfer rate has been decreasing steadily since the 1992 cohort, but increased with the 1995 cohort.
- The transfer rate for ACC's Black students majoring in academic programs has fluctuated in comparison to the statewide rate.
 - It was higher than the statewide rate for the 1992 and 1995 cohorts, but lower than the statewide rate for the 1993 and 1994 cohorts.
 - ACC's Black student transfer rate has been increasing since the 1993 cohort.

*Other Minority includes Asian, American Indian, and International students.



Source: THECB Transfer Rate Study

Academic Programs Transfer Effectiveness Measures Report 2000-01 (continued)

INTENDED OUTCOME

3A. ACC students who transfer will be in good academic standing* at the transfer institution.

CRITERION

Based on data provided by principal transfer institutions, seventy percent or more of transfer students will be in good academic standing at the transfer institution.

RESULTS

ACC must rely on universities to provide these data. Southwest Texas State University is one institution to which a high percentage of ACC students transfer. SWTSU provides ACC with transfer student performance data on an annual basis. Of 623 ACC transfers to SWTSU in the fall of 1999, 475 or 76.2 percent were in good standing* at the end of their first semester, and 482 or 77.3 percent were in good standing at the end of the last semester of their first academic year.

*Good standing is defined as a GPA of 2.0 or better.

DATA

Fall 1999 ACC Transfer Students "in Good Standing" at Southwest Texas University

	First Semester at SWTSU	Last Semester of First Academic Year at SWTSU
ACC Transfer Students Enrolled at SWTSU on Census Date (12th Class Day)	623	623
ACC Students "in Good Standing"	475	482
Percent of ACC Students "in Good Standing"	76.2%	77.3%

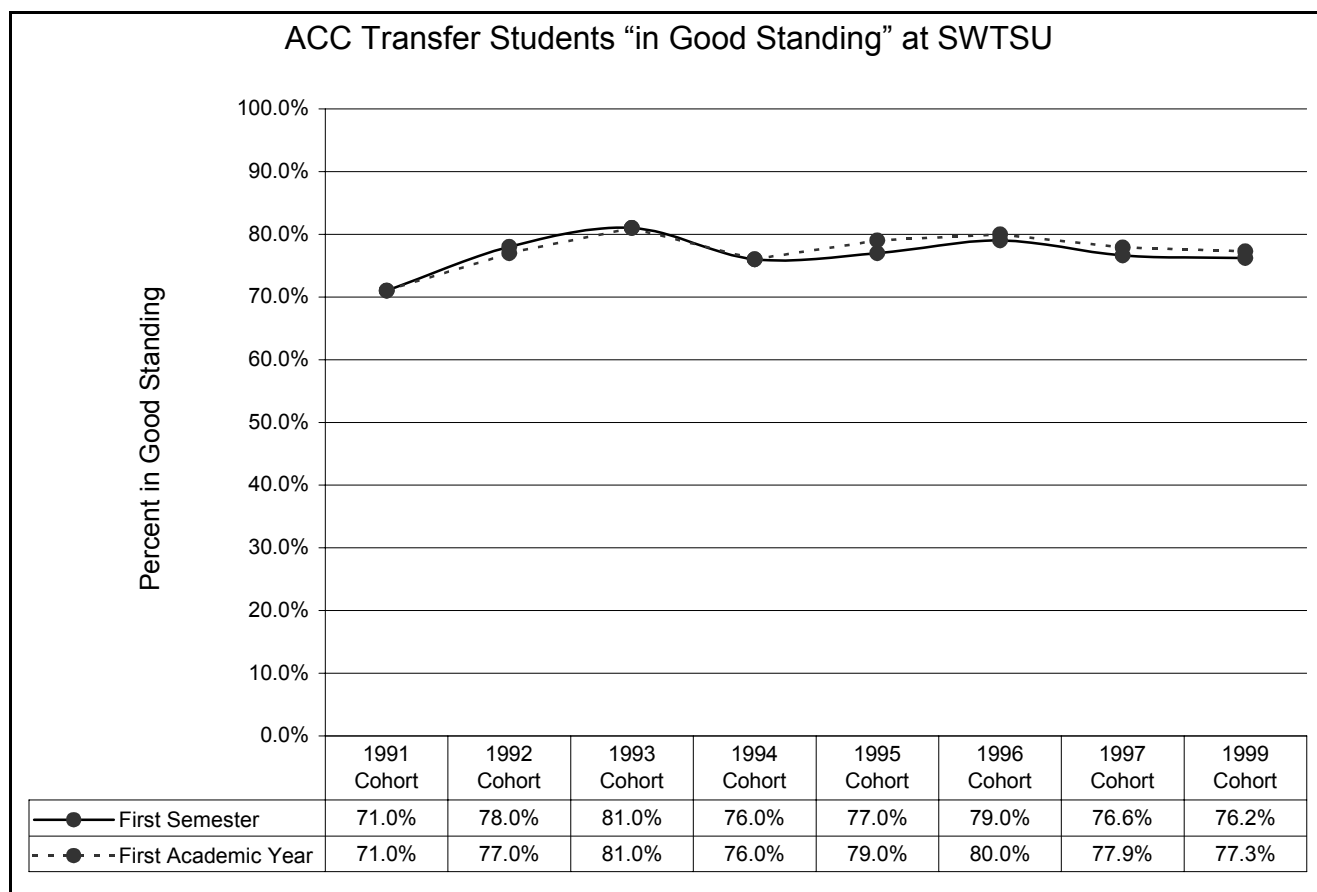
Source: Data provided by SWTSU September 2000

Academic Programs Transfer Effectiveness Measures Report 2000-01 (continued)

TREND DATA

For all cohort years since 1991, more than seventy percent (70%) of ACC students who transferred to Southwest Texas State University (SWTSU) remained “in good standing,” both at the end of the first semester and the end of their first academic year.

Since the 1994 cohort, the percent “in good standing” at the end of the first academic year has been higher than at the end of the first semester.



Source: Data provided by Southwest Texas State University

Academic Programs Transfer Effectiveness Measures Report 2000-01 (continued)

INTENDED OUTCOME

3B. ACC students who transfer will earn GPAs comparable to other transfer students at the transfer institution.

CRITERION

Based on data provided by the transfer institution, the average GPA of ACC transfer students and other transfer students at principal transfer institutions will not be significantly different.

RESULTS

ACC is meeting this criterion. Cumulative GPA data indicate ACC students who transfer achieve very similar GPAs as all students who transfer.

Average cumulative GPAs for ACC students transferring to SWTSU were 0.1 grade point higher than all other students transferring to those schools. Cumulative GPAs for ACC students transferring to UT-Austin were the same as all other students transferring to UT-Austin. Cumulative GPAs for ACC students transferring to University of North Texas were .1 grade point below all other students transferring to University of North Texas .

DATA

Comparison of Cumulative GPA
ACC Transfer Students and All Transfer Students
Academic Year 1999

School	ACC Students Entering Transfer School in Academic Year 1999		All Transfer Students Entering Transfer School in Academic Year 1999		Difference
	Number	GPA	Number	GPA	
Southwest Texas State University	623	2.5	1,777	2.4	+0.1
University of Texas at Austin	492	2.8	1,723	2.8	0
University of North Texas	179	2.7	12,851	2.8	-0.1

Data provided by Transfer institutions

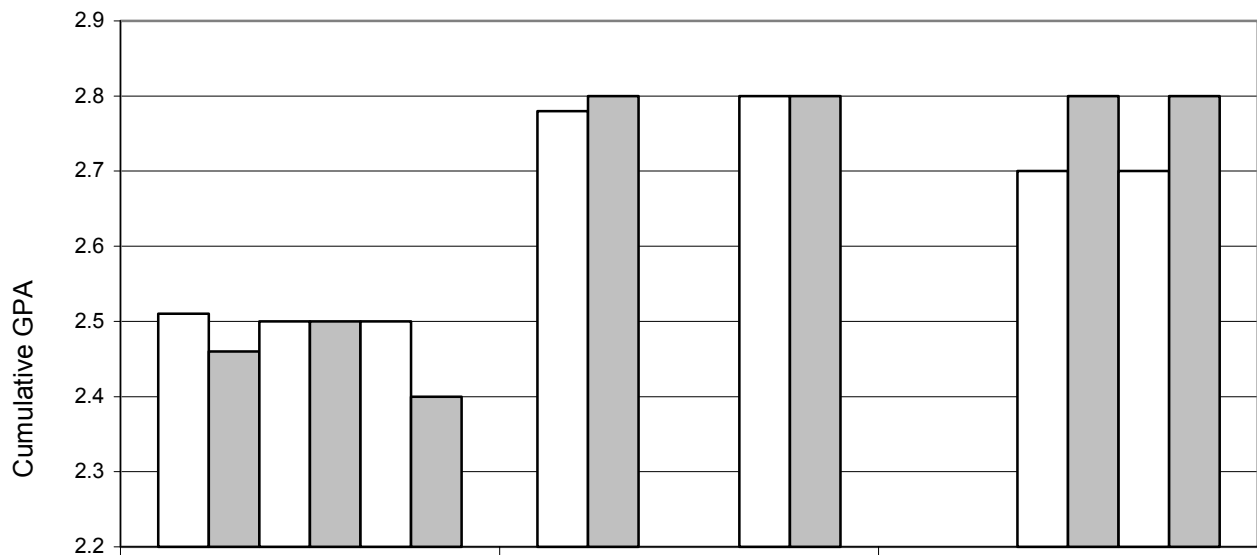
Academic Programs Transfer Effectiveness Measures Report 2000-01 (continued)

TREND DATA

Average cumulative GPA data from transfer institutions indicate the following:

- ACC students who transfer to Southwest Texas State University consistently perform as well as all SWTSU transfer students.
- ACC students who transfer to The University of Texas at Austin maintain cumulative grade point averages within 0.1 grade point of all UT Austin transfer students.
- ACC students who transfer to the University of North Texas consistently maintain cumulative grade point averages within 0.1 grade point of all UNT transfer students.

Comparison of Cumulative GPA of ACC Transfer Students and All Transfer Students



	SWTSU	UT Austin	U North Texas
□ 1996 ACC	2.5	2.8	
■ 1996 All	2.5	2.8	
□ 1997 ACC	2.5		2.7
■ 1997 All	2.5		2.8
□ 1998 ACC	2.5	2.8	2.7
■ 1998 All	2.4	2.8	2.8

Cohorts

Source: Data provided by Individual Institutions