

ALTERNATIVE CREDIT
& ADULT EDUCATION



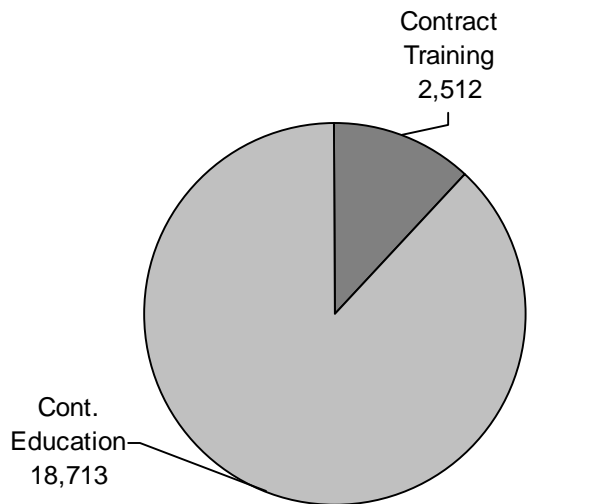
Alternative Credit

Alternative Credit programs at Austin Community College include Customized Training, and Workforce Continuing Education and Lifelong Learning.

- Customized Training provides customized contract training and education, and job profiling and assessment services to individual organizations to improve job performance and productivity of their employees.
- Workforce Continuing Education and Lifelong Learning includes apprenticeship training in a range of programs that are registered with the U. S. Department of Labor, and personal, career, and business development courses of study designed to assist individuals in improving their job skills and meeting continuing education credit requirements of their professions.

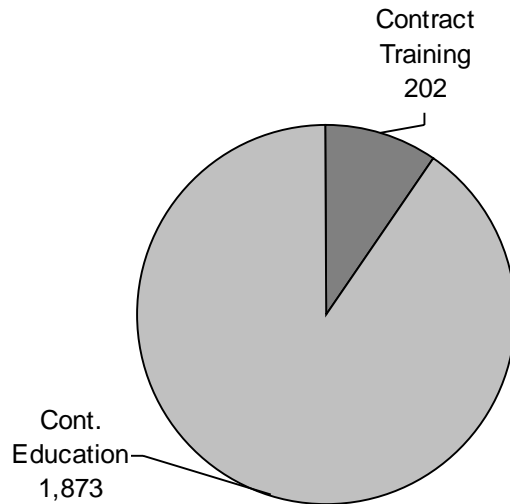
Workforce Continuing Education & Lifelong Learning

Participants FY98



Total 21,225 Employees/Participants Served

Programs FY98



Total 2,075 Programs Offered

Source: Office of Business Training and Continuing Education

Alternative Credit Programs of Study

Business Development

Financial Management Series
Marketing for the Small Business

Career Development

Job Entry Preparation

- Computer Repair and Maintenance
- Consumer Electronics
- Customer Support Analyst Program
- Horticulture and Landscaping
- Housekeeping
- Jewelry
- Notary Public
- Photography
- Power Mechanics
- Sign Language
- Substitute Teacher Training
- Upholstery
- Welding

Career Advancement Programs

- Certified Employee Benefit Specialist
- Child Care and Development
- Commercial Property Management
- Environmental Management
- Quality Review Programs
- Translators and Intepreters

Health Care Programs

- Case Management Certificate
- Clinical Technician
- Continuing Education for CNAs
- Continuing Education for Healthcare Professionals
- EMS Programs
- Gerontology Certificate
- Independent Study Continuing Education for Nurses and EMTs

- Licensed Chemical Dependency Counselor
- Long-term Care Administration
- Medical Terminology
- Medication Aide
- Nurse Aide
- Nursing Home Activitiy Director
- Pharmacy Technician
- Phlebotomy Technician
- TV Courses

Insurance

Professional Development

Real Estate

- Mandatory Continuing Education
- Real Estate Education

Computer Training Programs

Programming and World Wide Web Development

Autodesk Premier Training Center

- Authorized Cad Training Center
- Microstation

Management and Supervision

- Medical Office Management Series
- Records Management Series
- Supervision Series
- Volunteer Management Academy

Personal Development

Aviation
Communication
Driving Safety Course
Financial Programs
Language and Culture
Maintenance and Repair
Personal Growth
Photography
Physical Fitness and Recreation

Source: Office of Business Training and Continuing Education

Adult Education

Austin Community College has served as the prime sponsor of the Adult Education Program of Travis County Co-op since September 1973. The program is funded annually and evaluated by the Texas Education Agency (TEA). The federal portion of the funding is provided by the U.S. Department of Education through TEA. The state portion of the funding is provided by the State of Texas. Local funding is also provided by Austin Community College. A coordinating committee, comprised of public school superintendents and their representatives, human service agency representatives, members of the business community, and student representatives, serves as an advisory committee in accordance with TEA guidelines.

Programs

The Adult Education Program includes the following components.

1. *Adult Basic Education (ABE)* programs for the adult whose reading, writing, and arithmetic skills are below the ninth-grade level. These classes, which consist of both self-paced and group instruction, are also part of the entry component of adult secondary or GED preparation.
2. *General Education Development (GED)* classes are for the adult whose high school education was interrupted. These classes cover five areas: writing, social studies, science, reading, and math. GED classes are designed to assist students to prepare for the GED Test and offer life and job readiness skills.
3. *English-as-a-Second Language (ESL)* classes are for the adult who wants to speak and write English.

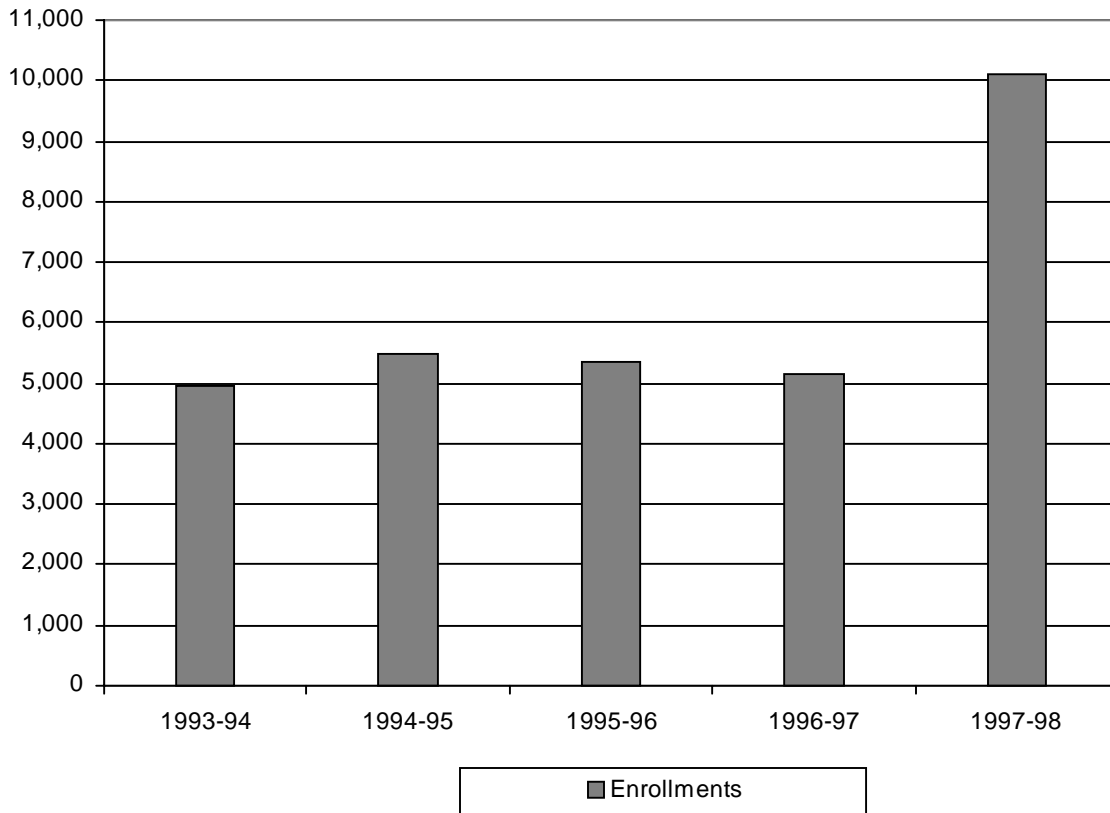
The following programs are specially funded through adult education and are designed for special populations.

1. *The Homeless Program* is for persons who have been displaced without shelter and in need of social and education services.
2. *The Adult Basic Education* program at Austin Community College provides adult education to TANF (Temporary Assistance for Needy Families) CHOICES recipients referred by the Texas Workforce Commission.
3. *The Adult Education for Correctional Institutions* program provides adult basic education and GED preparation classes for inmates of city and county correctional facilities.

**ADULT EDUCATION
Enrollments
1993-1998**

	1993-94	1994-95	1995-96	1996-97	1997-98
Enrollments	4,960	5,483	5,361	5,160	10,106

- The drop in enrollment for FY 1994-95 can be attributed to a reduction in funding allocations from state and federal sources resulting in a reduction of services for that year.

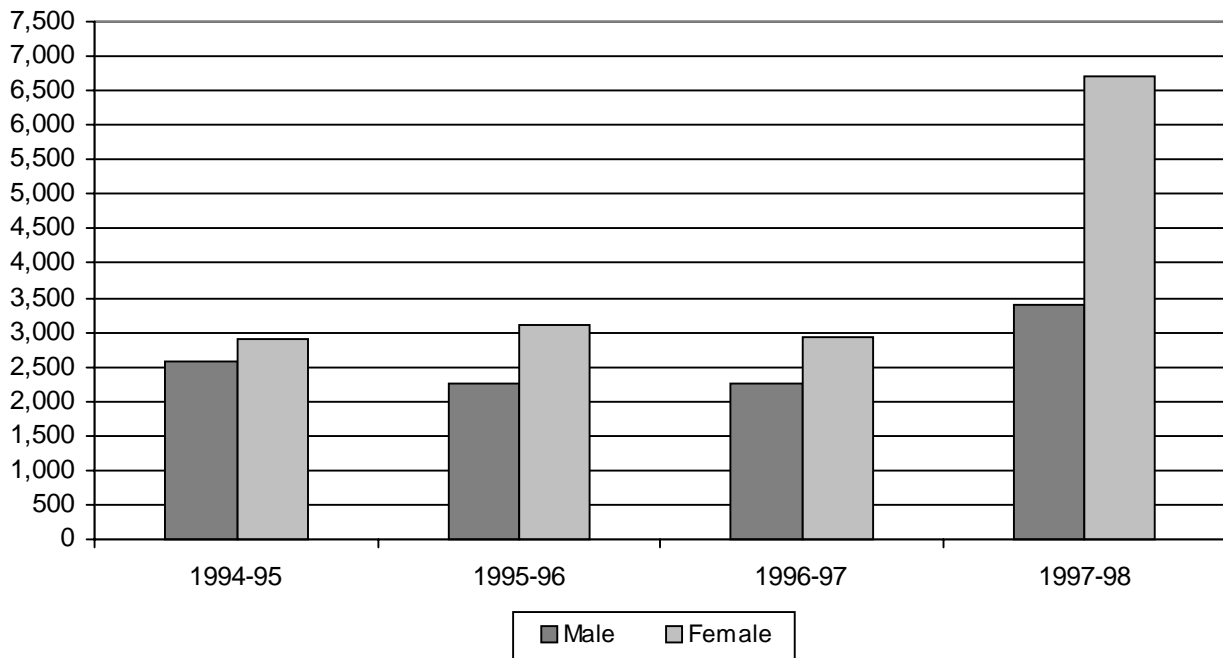


Source: Office of Adult Education

ALTERNATIVE CREDIT AND ADULT EDUCATION

**ADULT EDUCATION
Enrollment by Gender
1994-1998**

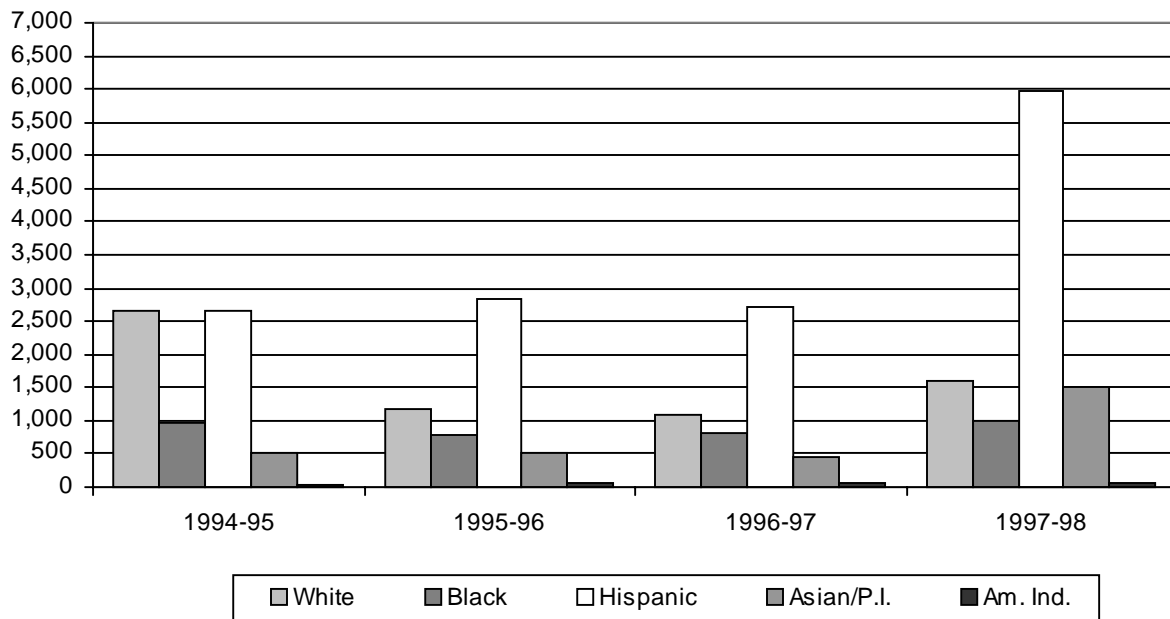
	1994-95	1995-96	1996-97	1997-98
Gender				
Male	2,575	2,263	2,242	3,384
% of Total	47.0 %	42.2 %	43.4 %	33.4 %
Female	2,908	3,098	2,918	6,722
% of Total	53.0 %	57.7 %	56.5 %	66.5 %
TOTAL	5,483	5,361	5,160	10,106



Source: Office of Adult Education

ADULT EDUCATION Enrollment by Ethnicity 1994-1998

	1994-95	1995-96	1996-97	1997-98
Ethnicity				
White	1,301	1,180	1,099	1,592
% of Total	23.7 %	22.0 %	21.3 %	15.8 %
Black	976	790	828	983
% of Total	17.8 %	14.7 %	16.0 %	9.7 %
Hispanic	2,657	2,822	2,730	5,961
% of Total	48.5 %	52.6 %	52.9 %	59.0 %
Asian/Pacific Islander	509	515	454	1,511
% of Total	9.3 %	9.6 %	8.8 %	15.0 %
Am. Indian/Alaskan Native	40	54	49	59
% of Total	0.7 %	1.0 %	0.9 %	0.6 %
TOTAL	5,483	5,361	5,160	10,106



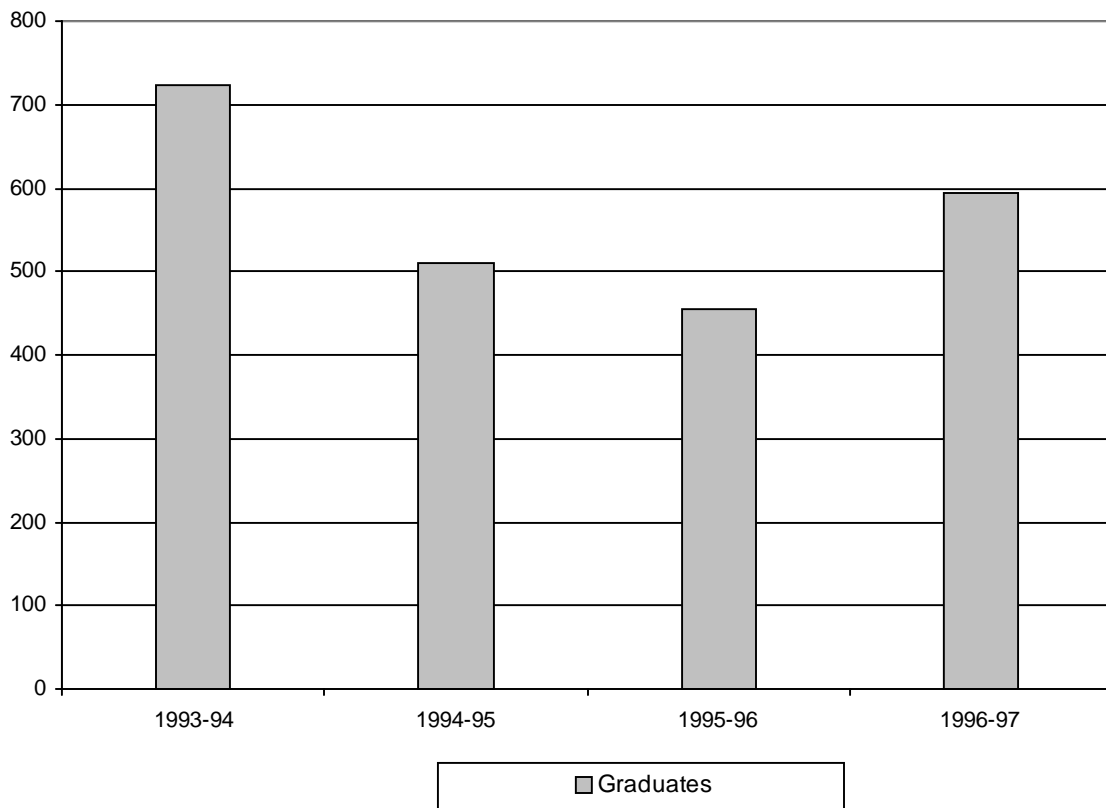
Source: Office of Adult Education

ALTERNATIVE CREDIT AND ADULT EDUCATION

**ADULT EDUCATION
Graduates
1993-1997**

	1993-94	1994-95	1995-96	1996-97
Graduates	723	510	455	594

- The drop in graduates for FY 1994-95 can be attributed to new state requirements for high school graduation and the renorming of the GED test.



Source: Office of Adult Education