

## Section 6

# Campus Demographics

*This section can be used for finding:*

- *student headcount for Fall 2003 at each location.*
- *student headcount for the past five years at each location broken out by gender, ethnicity, and age.*

### Contents

Summary .....	90
Student Headcount by Location .....	91
Cypress Creek Campus .....	92
Eastview Campus .....	94
Northridge Campus .....	96
Pinnacle Campus .....	98
Rio Grande Campus .....	100
Riverside Campus .....	102
Telecommunicated Instruction .....	104
Extension Centers and Site-Based Summary .....	106
Extension Centers by Location .....	107

### Useful Terms

**Extension Centers** - non-campus locations that are staffed, have regular posted hours, and offer credit courses on a regular basis (every semester).

**Headcount** - the number of students enrolled in one or more courses.

**Site-Based Instruction** - credit and non-credit classes and training provided to businesses, government entities, high schools, correctional institutions, and community groups.

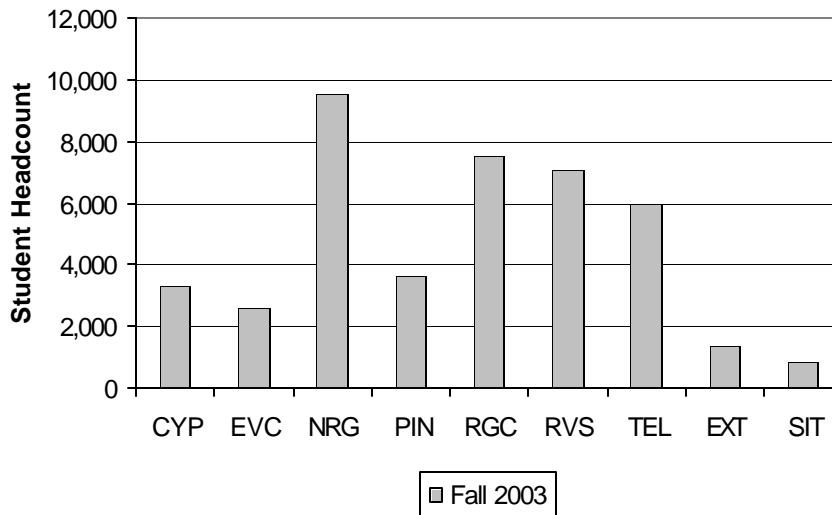
**Telecommunicated Instruction** - courses delivered to individuals and groups by synchronous or asynchronous methods. Delivery methods include instructional television (ITV) using recorded video programs shown on cable TV and on cassette, web-based courses (PCM), print-based courses (PRN) using a textbook, directed studies (DIR), interactive video classes (IVC) with groups of students at several sites, and live televised classes (LTV) to individual students at home or work via the Internet or cable television.

## Campus Demographics Summary

- Student headcount at Cypress Creek campus has increased every year since Fall 2000. Fall 2003 represents the largest student headcount for the Cypress Creek campus – 3,277 students. Due to an increase in the Hispanic student headcount, Cypress Creek has seen an increase in minority student headcount – minorities comprised 22% of the Cypress Creek students in Fall 1999 compared to 29% in Fall 2003.
- Eastview’s student headcount has increased over 700 students since Fall 2001 to its present high of 2,583 students – this represents a 38% jump in two years. Among all the six main campuses in Fall 2003, Eastview had the highest female student headcount percentage (69%), the highest Hispanic student headcount percentage (31%), and the highest Black student headcount percentage (20%).
- Student headcount at the Northridge campus decreased slightly from Fall 2002 to Fall 2003 (9,692 vs. 9,543, respectively). In Fall 2003, Northridge had the highest percentage of male students (48%) and Asian/Pacific Islander students (8%).
- Student headcount at the Pinnacle campus decreased slightly from Fall 2002 to Fall 2003 (3,772 vs. 3,646, respectively). In Fall 2003, Pinnacle had the highest percentage of White students (68%) among all campuses, although minority student headcount has grown slightly since Fall 1999. Nearly half of the student headcount at Pinnacle in Fall 2003 was comprised of “traditional” college-aged students, 18 – 21 years of age (49%), the largest percentage among the six main Austin Community College campuses.
- Student headcount at the Rio Grande campus decreased slightly from Fall 2002 to Fall 2003 (7,590 vs. 7,538, respectively). Since Fall 2001, the gender distribution of Rio Grande students has become slightly more female. Nearly three-quarters of the student headcount at Rio Grande was comprised of students between the ages of 19 – 30.
- Student headcount at the Riverside campus decreased 6% from Fall 2002 to Fall 2003 (7,534 vs. 7,100, respectively) – this represents the biggest percentage drop in student headcount among the six main Austin Community College campuses between Fall 2002 and Fall 2003 (the Allied Health program moved from Riverside to Eastview, accounting for some of the enrollment decline). The Riverside campus has shown only slight shifts in gender, ethnicity and age distributions since Fall 1999.
- Telecommunicated Instruction has seen a rapid increase in student headcount. The campus has grown from a student headcount of 3,752 in Fall 1999 to 5,949 in Fall 2003, an increase of 59%. Sixty-five percent of the Telecommunicated Instruction students are female. Compared to the six main Austin Community College campuses, there is a higher percent of older students (25 years of age and older) in Telecommunicated Instruction sections.
- Student headcount at Extension Centers was, virtually, unchanged between Fall 2002 and Fall 2003 (1,365 vs. 1,379, respectively). Site-Based student headcount dropped from 1,145 students in Fall 2002 to 849 in Fall 2003.

**Student Headcount by Location  
Fall 2003**

<u>Location</u>	<u>Fall 2003</u>
Cypress Creek	3,277
Eastview	2,583
Northridge	9,543
Pinnacle	3,646
Rio Grande	7,538
Riverside	7,100
Telecommunicated Instruction	5,949
Extension Centers	1,379
Site-Based Instruction	849



NOTE: Students who attend multiple locations are counted once at each location.

Source: ACC Computer System - uncertified data

**Student Headcount  
Cypress Creek Campus  
Fall 1999 - 2003**

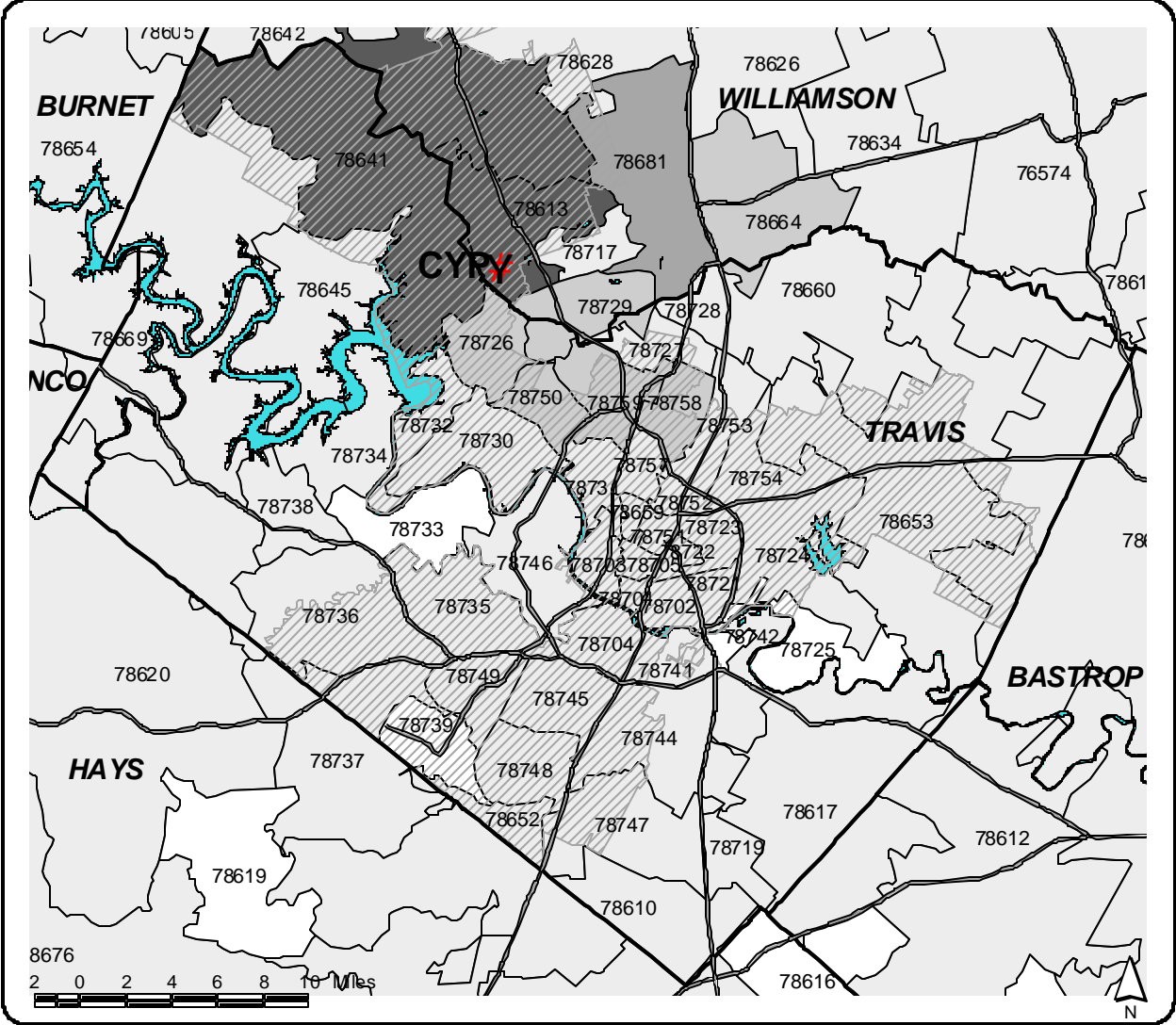
	Fall 1999	Fall 2000	Fall 2001	Fall 2002	Fall 2003
<b>Student Headcount</b>	<b>2,852</b>	<b>2,620</b>	<b>2,762</b>	<b>3,070</b>	<b>3,277</b>
<b>Credit Hours</b>	16,553	15,293	16,625	18,216	19,113
<b>Contact Hours</b>	295,488	278,080	300,288	332,000	349,320
<b>Full-time Equivalent Student (FTSE)*</b>	1,379.4	1,274.4	1,385.4	1,518.0	1,592.8
<b>Gender</b>					
Male	1,283 45.0%	1,145 43.7%	1,165 42.2%	1,279 41.7%	1,329 40.6%
Female	1,569 55.0%	1,475 56.3%	1,597 57.8%	1,791 58.3%	1,948 59.4%
<b>Ethnicity</b>					
White	2,211 77.5%	1,974 75.3%	2,011 72.8%	2,143 69.8%	2,224 67.9%
Hispanic	362 12.7%	356 13.6%	414 15.0%	518 16.9%	572 17.5%
Black	102 3.6%	92 3.5%	128 4.6%	136 4.4%	165 5.0%
Asian/Pacific Islander	134 4.7%	122 4.7%	126 4.6%	135 4.4%	175 5.3%
Am. Indian/Alaskan Native	14 0.5%	10 0.4%	24 0.9%	32 1.0%	30 0.9%
Other/Unknown	29 1.0%	66 2.5%	59 2.1%	106 3.5%	111 3.4%
<b>Age</b>					
16 and Under	11 0.4%	19 0.7%	23 0.8%	28 0.9%	26 0.8%
17	52 1.8%	51 1.9%	85 3.1%	109 3.6%	104 3.2%
18	244 8.6%	268 10.2%	415 15.0%	437 14.2%	431 13.2%
19-21	1,132 39.7%	1,025 39.1%	945 34.2%	1,057 34.4%	1,128 34.4%
22-24	410 14.4%	331 12.6%	370 13.4%	410 13.4%	455 13.9%
25-30	389 13.6%	377 14.4%	377 13.6%	465 15.1%	470 14.3%
31-35	178 6.2%	179 6.8%	182 6.6%	217 7.1%	283 8.6%
36-50	389 13.6%	325 12.4%	318 11.5%	302 9.8%	340 10.4%
51-64	38 1.3%	41 1.6%	39 1.4%	40 1.3%	36 1.1%
65 and Over	9 0.3%	2 0.1%	8 0.3%	5 0.2%	4 0.1%
Unknown	0 0.0%	2 0.1%	0 0.0%	0 0.0%	0 0.0%

\* Full-time Student Equivalent (FTSE) is based on 12 SCH.

NOTES: Students who attend multiple locations are counted once at each location. Percents may not add to 100 due to rounding.

Source: ACC Computer System - uncertified data

**Student Headcount by Zip Code  
Cypress Creek Campus  
Fall 2003**



ACC Campuses	<b>Fall 2003 Headcount</b>
Highways	none
County Boundary	1 - 100
ACC Tax Jurisdiction	101 - 200
Lakes	201 - 300
Zip Code	301 - 400
	> 400

Source: ACC Computer System - uncertified data

**Student Headcount  
Eastview Campus  
Fall 1999 - 2003**

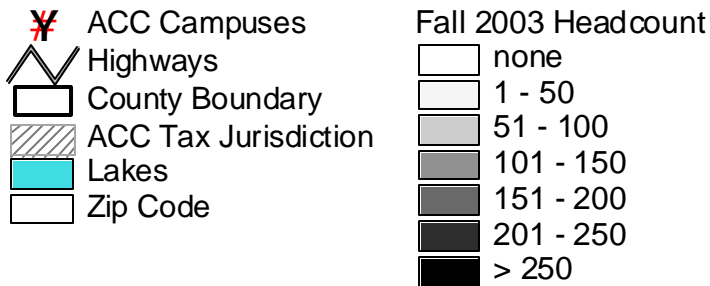
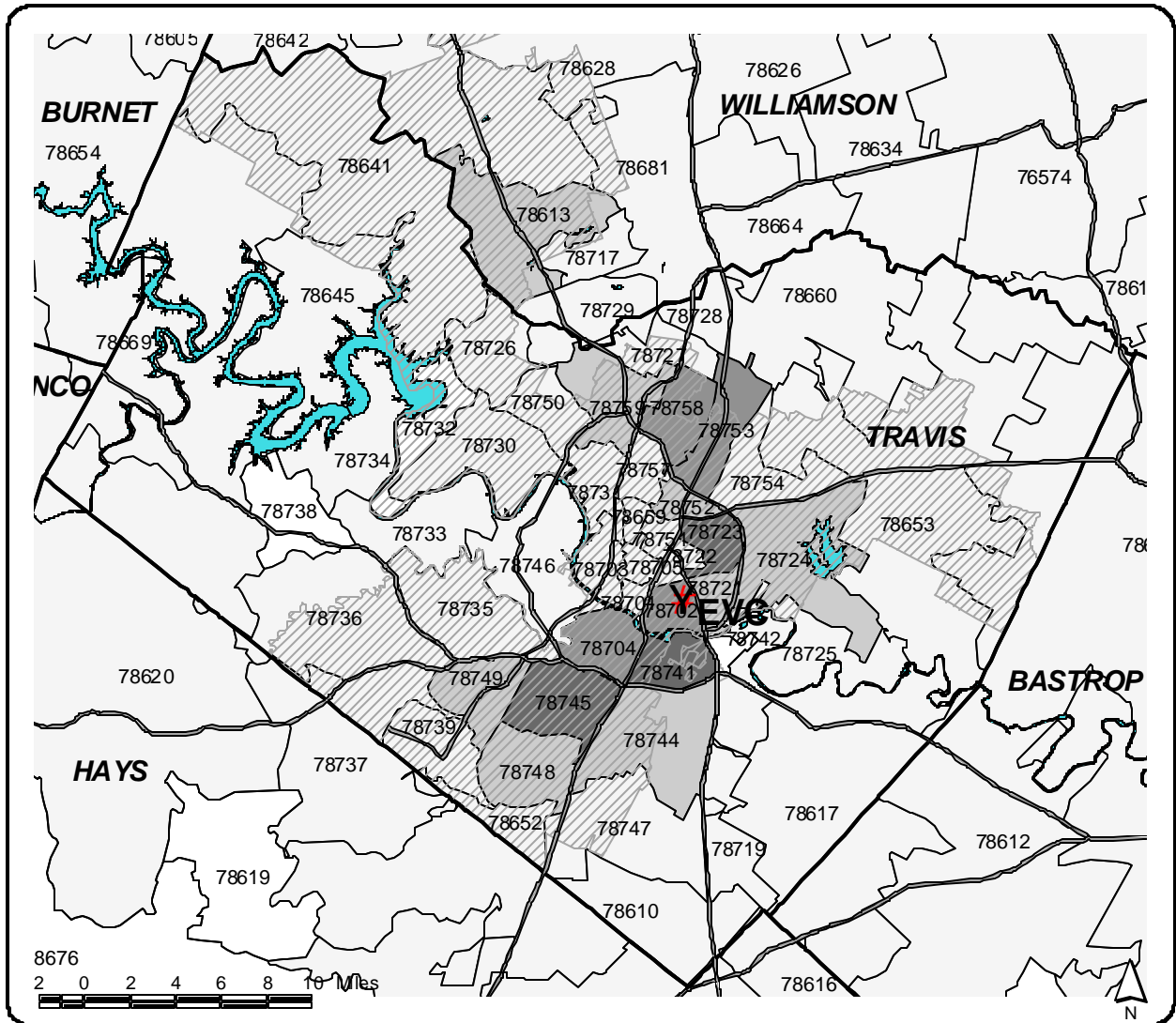
	Fall 1999	Fall 2000	Fall 2001	Fall 2002	Fall 2003
<b>Student Headcount</b>	<b>1,731</b>	<b>1,913</b>	<b>1,867</b>	<b>2,171</b>	<b>2,583</b>
<b>Credit Hours</b>	7,912	9,288	9,354	10,454	14,018
<b>Contact Hours</b>	149,360	180,272	182,832	204,952	330,088
<b>Full-time Equivalent Student (FTSE)*</b>	659.3	774.0	779.5	871.2	1,168.2
<b>Gender</b>					
Male	690 39.9%	795 41.6%	734 39.3%	786 36.2%	810 31.4%
Female	1,041 60.1%	1,118 58.4%	1,133 60.7%	1,385 63.8%	1,773 68.6%
<b>Ethnicity</b>					
White	769 44.4%	817 42.7%	704 37.7%	802 36.9%	1,027 39.8%
Hispanic	482 27.8%	548 28.6%	605 32.4%	679 31.3%	805 31.2%
Black	335 19.4%	412 21.5%	391 20.9%	480 22.1%	523 20.2%
Asian/Pacific Islander	113 6.5%	76 4.0%	80 4.3%	90 4.1%	94 3.6%
Am. Indian/Alaskan Native	10 0.6%	13 0.7%	18 1.0%	15 0.7%	17 0.7%
Other/Unknown	22 1.3%	47 2.5%	69 3.7%	105 4.8%	117 4.5%
<b>Age</b>					
16 and Under	0 0.0%	1 0.1%	2 0.1%	3 0.1%	3 0.1%
17	14 0.8%	4 0.2%	18 1.0%	28 1.3%	19 0.7%
18	84 4.9%	110 5.8%	158 8.5%	205 9.4%	186 7.2%
19-21	579 33.4%	601 31.4%	578 31.0%	673 31.0%	653 25.3%
22-24	282 16.3%	326 17.0%	320 17.1%	357 16.4%	453 17.5%
25-30	328 18.9%	369 19.3%	312 16.7%	407 18.7%	514 19.9%
31-35	153 8.8%	171 8.9%	164 8.8%	182 8.4%	294 11.4%
36-50	245 14.2%	271 14.2%	262 14.0%	251 11.6%	396 15.3%
51-64	39 2.3%	51 2.7%	45 2.4%	62 2.9%	64 2.5%
65 and Over	7 0.4%	8 0.4%	8 0.4%	3 0.1%	1 0.0%
Unknown	0 0.0%	1 0.1%	0 0.0%	0 0.0%	0 0.0%

\* Full-time Student Equivalent (FTSE) is based on 12 SCH.

NOTES: Students who attend multiple locations are counted once at each location. Percents may not add to 100 due to rounding.

Source: ACC Computer System - uncertified data

**Student Headcount by Zip Code  
Eastview Campus  
Fall 2003**



Source: ACC Computer System - uncertified data

**Student Headcount  
Northridge Campus  
Fall 1999 - 2003**

	Fall 1999	Fall 2000	Fall 2001	Fall 2002	Fall 2003
<b>Student Headcount</b>	<b>9,263</b>	<b>9,142</b>	<b>9,380</b>	<b>9,692</b>	<b>9,543</b>
<b>Credit Hours</b>	56,204	56,371	58,755	60,269	60,107
<b>Contact Hours</b>	1,099,768	1,119,512	1,158,488	1,187,072	1,165,896
<b>Full-time Equivalent Student (FTSE)*</b>	4,683.7	4,697.6	4,896.3	5,022.4	5,008.9
<b>Gender</b>					
Male	4,503 48.6%	4,442 48.6%	4,593 49.0%	4,655 48.0%	4,571 47.9%
Female	4,760 51.4%	4,700 51.4%	4,787 51.0%	5,037 52.0%	4,972 52.1%
<b>Ethnicity</b>					
White	6,011 64.9%	5,684 62.2%	5,697 60.7%	5,622 58.0%	5,557 58.2%
Hispanic	1,663 18.0%	1,732 18.9%	1,828 19.5%	1,976 20.4%	1,959 20.5%
Black	625 6.7%	630 6.9%	667 7.1%	758 7.8%	751 7.9%
Asian/Pacific Islander	770 8.3%	806 8.8%	828 8.8%	803 8.3%	731 7.7%
Am. Indian/Alaskan Native	69 0.7%	62 0.7%	74 0.8%	79 0.8%	77 0.8%
Other/Unknown	125 1.3%	228 2.5%	286 3.0%	454 4.7%	468 4.9%
<b>Age</b>					
16 and Under	9 0.1%	21 0.2%	43 0.5%	79 0.8%	61 0.6%
17	71 0.8%	75 0.8%	210 2.2%	203 2.1%	211 2.2%
18	431 4.7%	504 5.5%	791 8.4%	822 8.5%	831 8.7%
19-21	2,927 31.6%	2,958 32.4%	2,973 31.7%	2,944 30.4%	2,887 30.3%
22-24	1,760 19.0%	1,684 18.4%	1,591 17.0%	1,744 18.0%	1,693 17.7%
25-30	1,897 20.5%	1,823 19.9%	1,794 19.1%	1,842 19.0%	1,829 19.2%
31-35	794 8.6%	770 8.4%	723 7.7%	811 8.4%	832 8.7%
36-50	1,203 13.0%	1,114 12.2%	1,073 11.4%	1,069 11.0%	1,010 10.6%
51-64	156 1.7%	169 1.8%	159 1.7%	156 1.6%	167 1.7%
65 and Over	15 0.2%	16 0.2%	23 0.2%	22 0.2%	22 0.2%
Unknown	0 0.0%	8 0.1%	0 0.0%	0 0.0%	0 0.0%

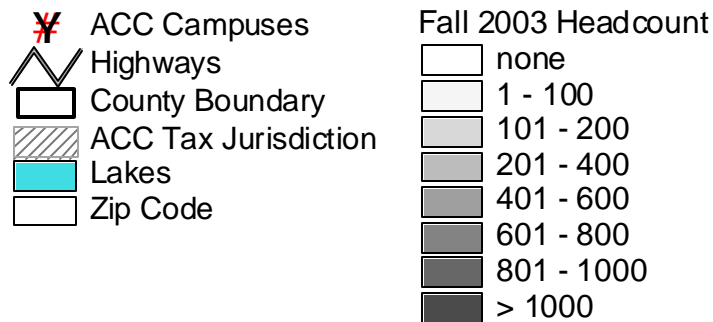
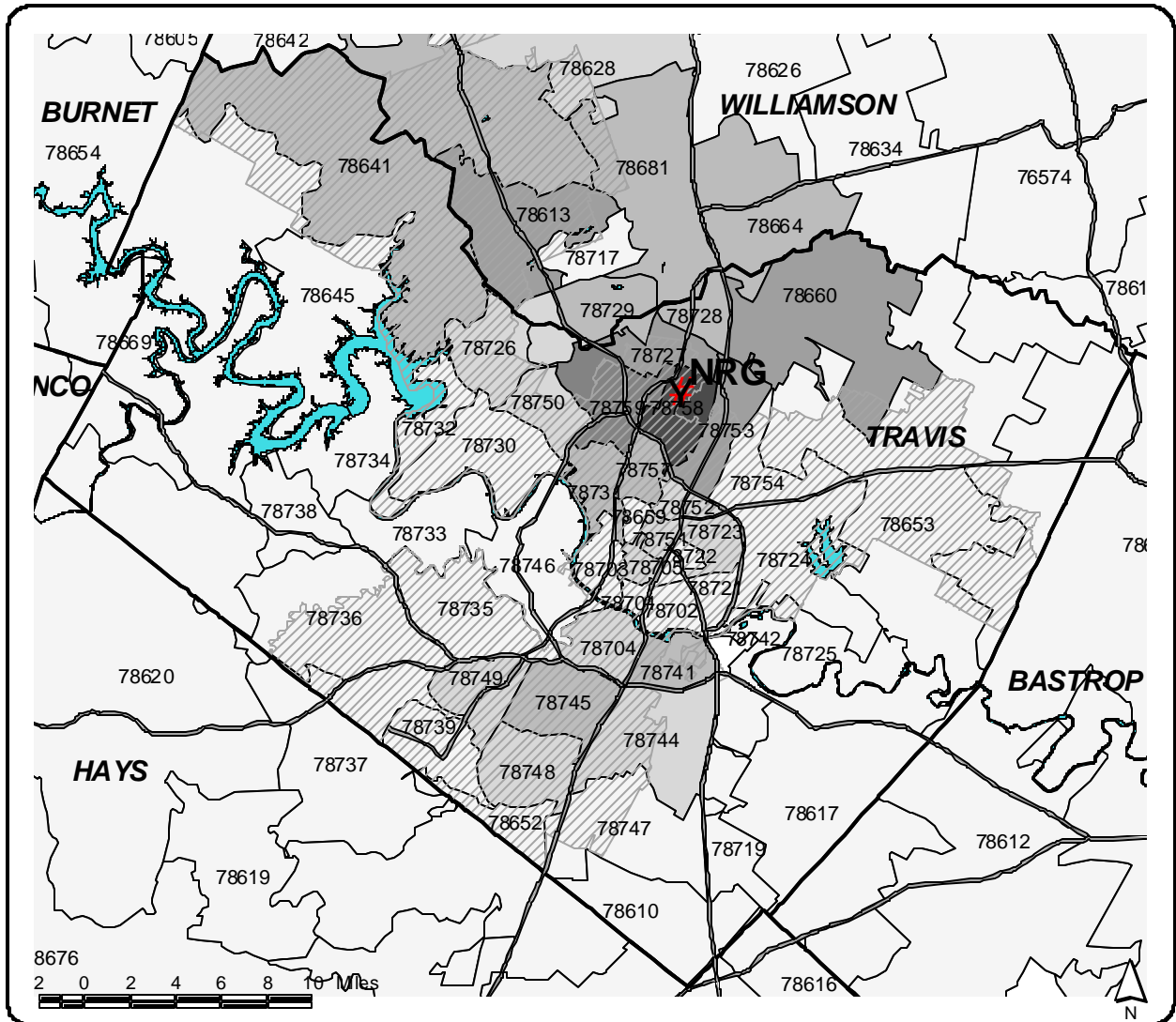
\* Full-time Student Equivalent (FTSE) is based on 12 SCH.

NOTES: Students who attend multiple locations are counted once at each location. Percents may not add to 100 due to rounding.

Source: ACC Computer System - uncertified data



### Student Headcount by Zip Code Northridge Campus Fall 2003



Source: ACC Computer System - uncertified data

**Student Headcount  
Pinnacle Campus  
Fall 1999 - 2003**

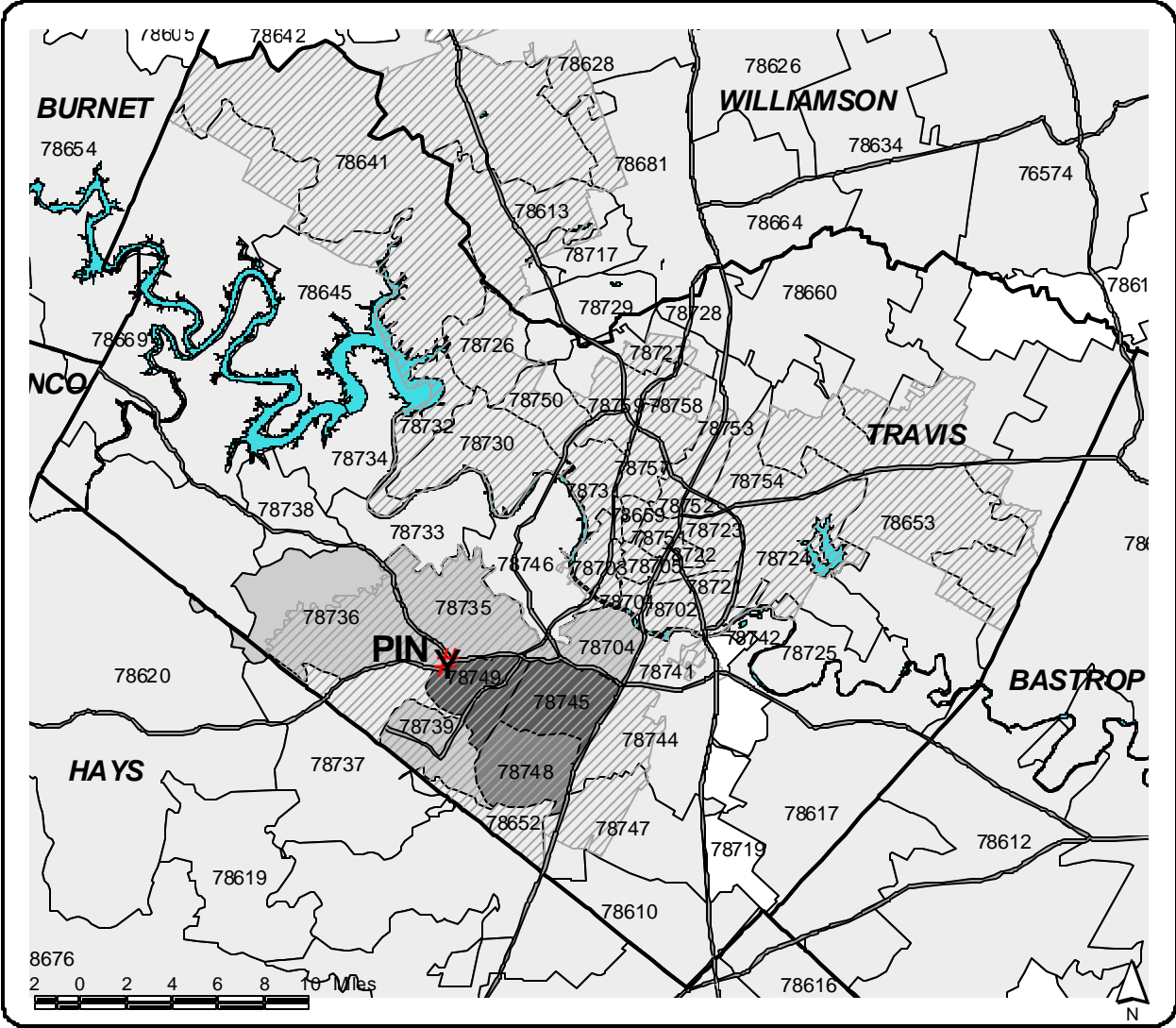
	Fall 1999	Fall 2000	Fall 2001	Fall 2002	Fall 2003
<b>Student Headcount</b>	<b>3,251</b>	<b>3,495</b>	<b>3,623</b>	<b>3,772</b>	<b>3,646</b>
<b>Credit Hours</b>	19,431	21,403	22,085	22,332	22,146
<b>Contact Hours</b>	346,480	390,240	409,280	417,080	407,216
<b>Full-time Equivalent Student (FTSE)*</b>	1,619.3	1,783.6	1,840.4	1,861.0	1,845.5
<b>Gender</b>					
Male	1,595 49.1%	1,719 49.2%	1,683 46.5%	1,788 47.4%	1,642 45.0%
Female	1,656 50.9%	1,776 50.8%	1,940 53.5%	1,984 52.6%	2,004 55.0%
<b>Ethnicity</b>					
White	2,390 73.5%	2,448 70.0%	2,485 68.6%	2,498 66.2%	2,482 68.1%
Hispanic	601 18.5%	675 19.3%	762 21.0%	820 21.7%	754 20.7%
Black	89 2.7%	116 3.3%	103 2.8%	116 3.1%	106 2.9%
Asian/Pacific Islander	120 3.7%	146 4.2%	137 3.8%	147 3.9%	118 3.2%
Am. Indian/Alaskan Native	26 0.8%	21 0.6%	35 1.0%	44 1.2%	40 1.1%
Other/Unknown	25 0.8%	89 2.5%	101 2.8%	147 3.9%	146 4.0%
<b>Age</b>					
16 and Under	10 0.3%	12 0.3%	46 1.3%	40 1.1%	52 1.4%
17	40 1.2%	62 1.8%	105 2.9%	119 3.2%	110 3.0%
18	255 7.8%	296 8.5%	476 13.1%	484 12.8%	451 12.4%
19-21	1,286 39.6%	1,428 40.9%	1,367 37.7%	1,398 37.1%	1,347 36.9%
22-24	566 17.4%	662 18.9%	599 16.5%	635 16.8%	607 16.6%
25-30	461 14.2%	467 13.4%	467 12.9%	515 13.7%	496 13.6%
31-35	184 5.7%	178 5.1%	204 5.6%	218 5.8%	218 6.0%
36-50	387 11.9%	338 9.7%	295 8.1%	320 8.5%	322 8.8%
51-64	56 1.7%	41 1.2%	59 1.6%	39 1.0%	42 1.2%
65 and Over	5 0.2%	7 0.2%	5 0.1%	4 0.1%	1 0.0%
Unknown	1 0.0%	4 0.1%	0 0.0%	0 0.0%	0 0.0%

\* Full-time Student Equivalent (FTSE) is based on 12 SCH.

NOTES: Students who attend multiple locations are counted once at each location. Percents may not add to 100 due to rounding.

Source: ACC Computer System - uncertified data

**Student Headcount by Zip Code  
Pinnacle Campus  
Fall 2003**



Source: ACC Computer System - uncertified data

**Student Headcount  
Rio Grande Campus  
Fall 1999 - 2003**

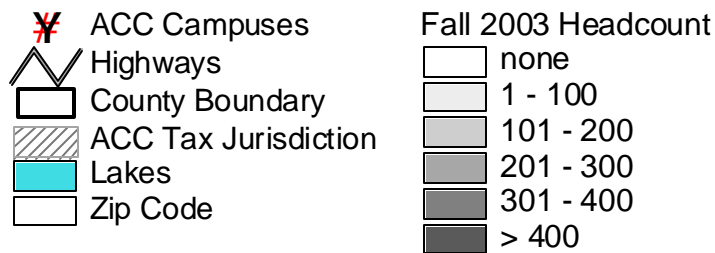
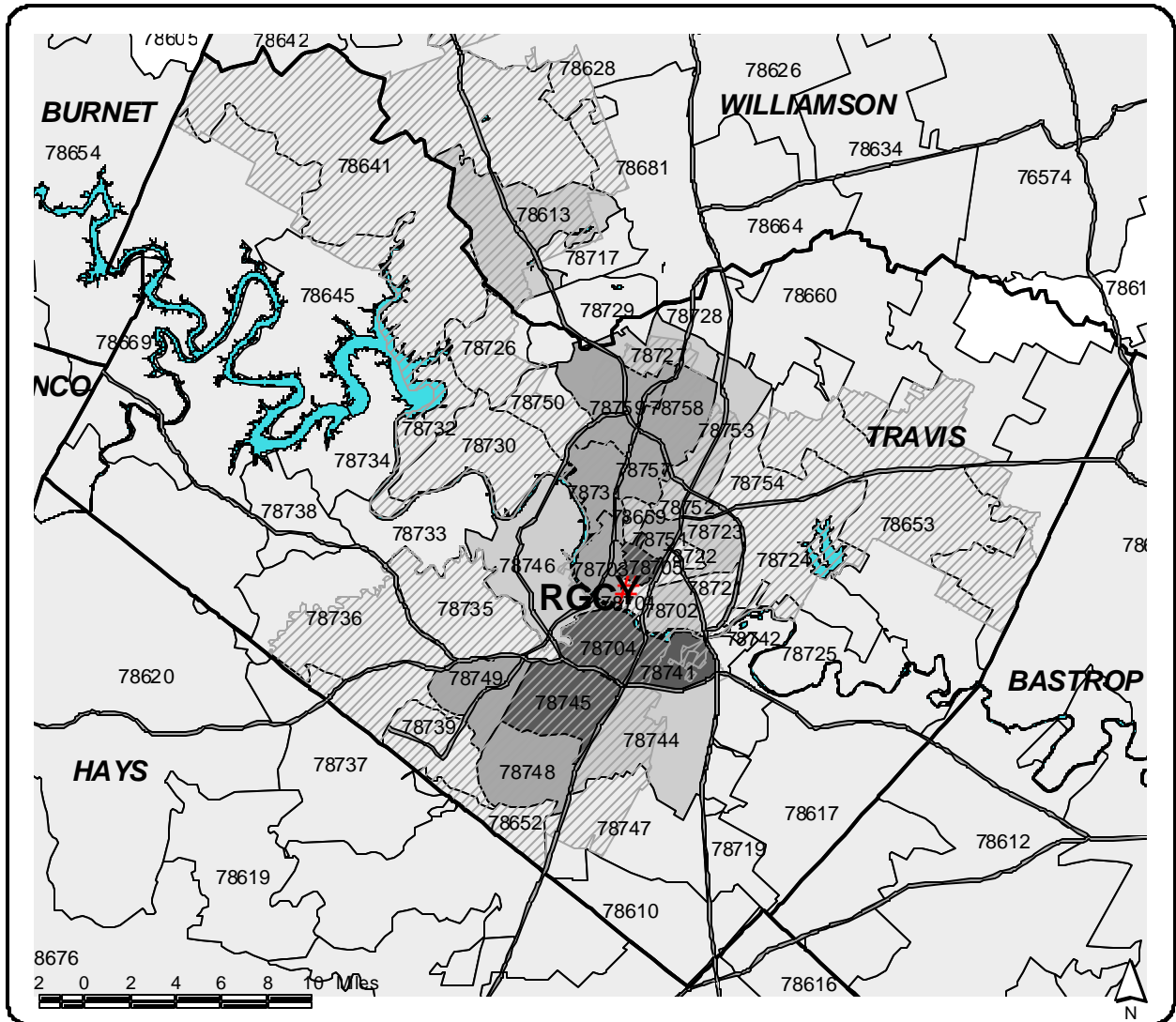
	Fall 1999	Fall 2000	Fall 2001	Fall 2002	Fall 2003
<b>Student Headcount</b>	<b>7,396</b>	<b>6,975</b>	<b>7,427</b>	<b>7,590</b>	<b>7,538</b>
<b>Credit Hours</b>	46,514	44,069	45,537	46,773	46,899
<b>Contact Hours</b>	859,504	825,280	861,072	878,968	884,984
<b>Full-time Equivalent Student (FTSE)*</b>	3,876.2	3,672.4	3,794.8	3,897.8	3,908.3
<b>Gender</b>					
Male	3,649 49.3%	3,435 49.2%	3,688 49.7%	3,696 48.7%	3,517 46.7%
Female	3,747 50.7%	3,540 50.8%	3,739 50.3%	3,894 51.3%	4,021 53.3%
<b>Ethnicity</b>					
White	4,910 66.4%	4,455 63.9%	4,631 62.4%	4,577 60.3%	4,608 61.1%
Hispanic	1,394 18.8%	1,369 19.6%	1,454 19.6%	1,534 20.2%	1,554 20.6%
Black	379 5.1%	357 5.1%	370 5.0%	394 5.2%	408 5.4%
Asian/Pacific Islander	465 6.3%	470 6.7%	534 7.2%	517 6.8%	406 5.4%
Am. Indian/Alaskan Native	66 0.9%	58 0.8%	83 1.1%	92 1.2%	82 1.1%
Other/Unknown	182 2.5%	266 3.8%	355 4.8%	476 6.3%	480 6.4%
<b>Age</b>					
16 and Under	9 0.1%	4 0.1%	25 0.3%	34 0.4%	39 0.5%
17	48 0.6%	50 0.7%	99 1.3%	149 2.0%	138 1.8%
18	353 4.8%	353 5.1%	536 7.2%	597 7.9%	581 7.7%
19-21	2,625 35.5%	2,587 37.1%	2,646 35.6%	2,649 34.9%	2,594 34.4%
22-24	1,609 21.8%	1,519 21.8%	1,510 20.3%	1,447 19.1%	1,506 20.0%
25-30	1,449 19.6%	1,292 18.5%	1,324 17.8%	1,384 18.2%	1,380 18.3%
31-35	489 6.6%	415 5.9%	484 6.5%	537 7.1%	538 7.1%
36-50	693 9.4%	634 9.1%	666 9.0%	646 8.5%	615 8.2%
51-64	109 1.5%	104 1.5%	127 1.7%	128 1.7%	134 1.8%
65 and Over	12 0.2%	13 0.2%	10 0.1%	19 0.3%	13 0.2%
Unknown	0 0.0%	4 0.1%	0 0.0%	0 0.0%	0 0.0%

\* Full-time Student Equivalent (FTSE) is based on 12 SCH.

NOTES: Students who attend multiple locations are counted once at each location. Percents may not add to 100 due to rounding.

Source: ACC Computer System - uncertified data

### Student Headcount by Zip Code Rio Grande Campus Fall 2003



Source: ACC Computer System - uncertified data

**Student Headcount  
Riverside Campus  
Fall 1999 - 2003**

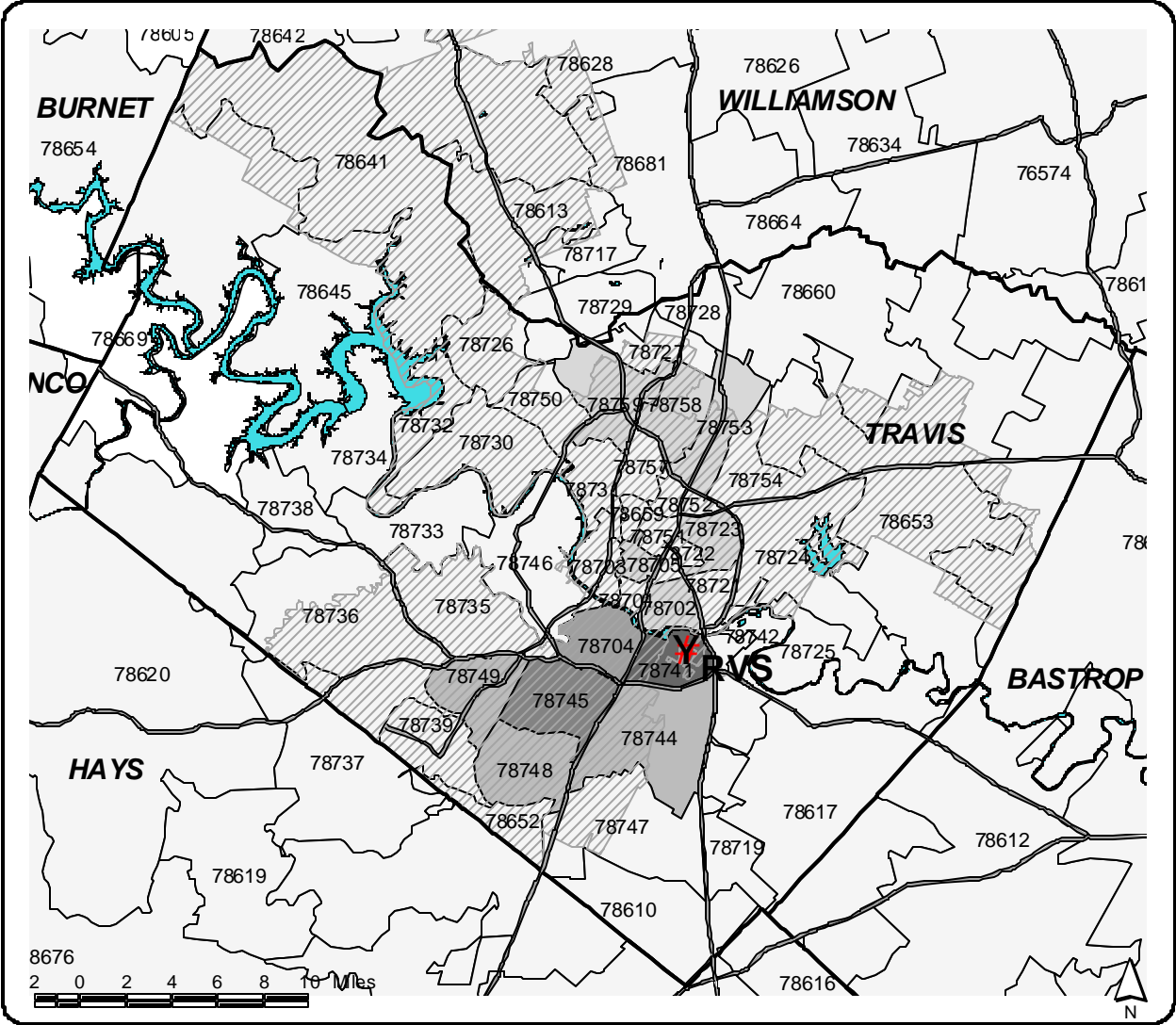
	Fall 1999	Fall 2000	Fall 2001	Fall 2002	Fall 2003
<b>Student Headcount</b>	<b>6,945</b>	<b>6,715</b>	<b>7,071</b>	<b>7,534</b>	<b>7,100</b>
<b>Credit Hours</b>	42,853	42,666	44,872	46,679	43,748
<b>Contact Hours</b>	868,400	867,296	929,008	974,704	872,864
<b>Full-time Equivalent Student (FTSE)*</b>	3,571.1	3,555.5	3,739.3	3,889.9	3,645.7
<b>Gender</b>					
Male	3,249 46.8%	3,181 47.4%	3,301 46.7%	3,491 46.3%	3,324 46.8%
Female	3,696 53.2%	3,534 52.6%	3,770 53.3%	4,043 53.7%	3,776 53.2%
<b>Ethnicity</b>					
White	3,988 57.4%	3,772 56.2%	3,800 53.7%	4,045 53.7%	3,782 53.3%
Hispanic	1,902 27.4%	1,865 27.8%	2,005 28.4%	2,083 27.6%	1,973 27.8%
Black	508 7.3%	524 7.8%	556 7.9%	623 8.3%	592 8.3%
Asian/Pacific Islander	379 5.5%	348 5.2%	401 5.7%	398 5.3%	326 4.6%
Am. Indian/Alaskan Native	54 0.8%	39 0.6%	74 1.0%	61 0.8%	55 0.8%
Other/Unknown	114 1.6%	167 2.5%	235 3.3%	324 4.3%	372 5.2%
<b>Age</b>					
16 and Under	3 0.0%	2 0.0%	26 0.4%	26 0.3%	26 0.4%
17	32 0.5%	47 0.7%	95 1.3%	93 1.2%	104 1.5%
18	305 4.4%	339 5.0%	570 8.1%	598 7.9%	560 7.9%
19-21	2,413 34.7%	2,441 36.4%	2,553 36.1%	2,695 35.8%	2,514 35.4%
22-24	1,419 20.4%	1,309 19.5%	1,268 17.9%	1,388 18.4%	1,309 18.4%
25-30	1,339 19.3%	1,277 19.0%	1,255 17.7%	1,284 17.0%	1,258 17.7%
31-35	481 6.9%	466 6.9%	482 6.8%	544 7.2%	493 6.9%
36-50	798 11.5%	697 10.4%	699 9.9%	751 10.0%	699 9.8%
51-64	135 1.9%	118 1.8%	105 1.5%	139 1.8%	127 1.8%
65 and Over	20 0.3%	16 0.2%	18 0.3%	16 0.2%	10 0.1%
Unknown	0 0.0%	3 0.0%	0 0.0%	0 0.0%	0 0.0%

\* Full-time Student Equivalent (FTSE) is based on 12 SCH.

NOTES: Students who attend multiple locations are counted once at each location. Percents may not add to 100 due to rounding.

Source: ACC Computer System - uncertified data

**Student Headcount by Zip Code  
Riverside Campus  
Fall 2003**



ACC Campuses	Fall 2003 Headcount
Highways	none
County Boundary	1 - 100
ACC Tax Jurisdiction	101 - 200
Lakes	201 - 400
Zip Code	401 - 600
	601 - 800
	801 - 1000
	> 1000

Source: ACC Computer System - uncertified data

**Student Headcount  
Telecommunicated Instruction\*\*  
Fall 1999 - 2003**

	Fall 1999	Fall 2000	Fall 2001	Fall 2002	Fall 2003
<b>Student Headcount</b>	<b>3,752</b>	<b>4,276</b>	<b>4,960</b>	<b>5,530</b>	<b>5,949</b>
<b>Credit Hours</b>	15,775	18,039	21,217	23,795	25,814
<b>Contact Hours</b>	268,832	306,592	361,696	411,488	446,160
<b>Full-time Equivalent Student (FTSE)*</b>	1,314.6	1,503.3	1,768.1	1,982.9	2,151.2
<b>Gender</b>					
Male	1,460 38.9%	1,599 37.4%	1,829 36.9%	2,029 36.7%	2,087 35.1%
Female	2,292 61.1%	2,677 62.6%	3,131 63.1%	3,501 63.3%	3,862 64.9%
<b>Ethnicity</b>					
White	2,614 69.7%	2,910 68.1%	3,340 67.3%	3,624 65.5%	3,885 65.3%
Hispanic	649 17.3%	701 16.4%	824 16.6%	953 17.2%	1,005 16.9%
Black	240 6.4%	293 6.9%	331 6.7%	366 6.6%	455 7.6%
Asian/Pacific Islander	174 4.6%	236 5.5%	295 5.9%	343 6.2%	305 5.1%
Am. Indian/Alaskan Native	26 0.7%	33 0.8%	43 0.9%	48 0.9%	50 0.8%
Other/Unknown	49 1.3%	103 2.4%	127 2.6%	196 3.5%	249 4.2%
<b>Age</b>					
16 and Under	9 0.2%	14 0.3%	40 0.8%	58 1.0%	58 1.0%
17	26 0.7%	58 1.4%	106 2.1%	135 2.4%	118 2.0%
18	114 3.0%	146 3.4%	200 4.0%	163 2.9%	203 3.4%
19-21	1,016 27.1%	1,229 28.7%	1,540 31.0%	1,526 27.6%	1,594 26.8%
22-24	793 21.1%	937 21.9%	951 19.2%	1,091 19.7%	1,185 19.9%
25-30	823 21.9%	851 19.9%	960 19.4%	1,141 20.6%	1,299 21.8%
31-35	341 9.1%	373 8.7%	451 9.1%	572 10.3%	650 10.9%
36-50	551 14.7%	581 13.6%	604 12.2%	749 13.5%	744 12.5%
51-64	76 2.0%	84 2.0%	98 2.0%	89 1.6%	91 1.5%
65 and Over	3 0.1%	2 0.0%	10 0.2%	6 0.1%	7 0.1%
Unknown	0 0.0%	1 0.0%	0 0.0%	0 0.0%	0 0.0%

\* Full-time Student Equivalent (FTSE) is based on 12 SCH.

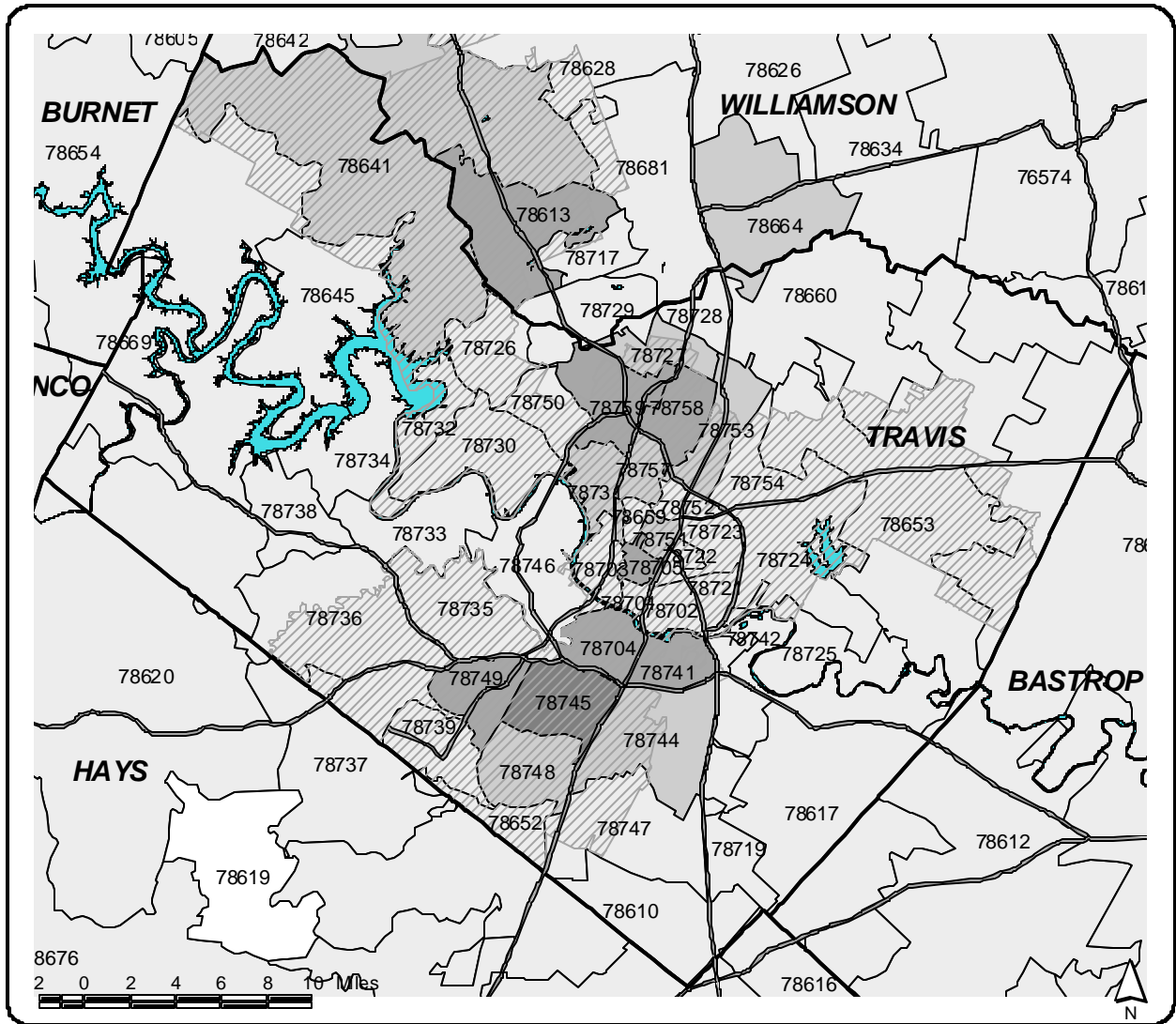
\*\* Telecommunicated instruction includes courses offered in the following formats: Instructional Television (ITV), Personal Computer with Modem (PCM), Print-Based using a textbook (PRN), Directed Learning (DIR), and Interactive Video Class (IVC).

NOTES: Students who attend multiple locations are counted once at each location. Percents may not add to 100 due to rounding.

Source: ACC Computer System - uncertified data



**Student Headcount by Zip Code  
Telecommunicated Instruction\*  
Fall 2003**



\* Telecommunicated instruction includes courses offered in the following formats: Instructional Television (ITV), Personal Computer with Modem (PCM), Print-Based using a textbook (PRN), Directed Learning (DIR), and Interactive Video Class (IVC).

Source: ACC Computer System - uncertified data

## Student Headcount Extension Centers and Site-Based\*\* Summary Fall 2003

	Extension Center Total***		Site-Based Total	
<b>Student Headcount</b>	<b>1,379</b>		<b>849</b>	
<b>Credit Hours</b>	6,569		3,138	
<b>Contact Hours</b>	117,248		73,096	
<b>Full-time Equivalent Student (FTSE)*</b>	547.4		261.5	
<b>Gender</b>				
Male	501	36.3%	363	42.8%
Female	878	63.7%	486	57.2%
<b>Ethnicity</b>				
White	949	68.8%	564	66.4%
Hispanic	300	21.8%	157	18.5%
Black	42	3.0%	47	5.5%
Asian/Pacific Islander	17	1.2%	27	3.2%
Am. Indian/Alaskan Native	10	0.7%	4	0.5%
Other/Unknown	61	4.4%	50	5.9%
<b>Age</b>				
16 and Under	127	9.2%	49	5.8%
17	282	20.4%	204	24.0%
18	135	9.8%	70	8.2%
19-21	307	22.3%	148	17.4%
22-24	166	12.0%	90	10.6%
25-30	126	9.1%	119	14.0%
31-35	87	6.3%	61	7.2%
36-50	133	9.6%	81	9.5%
51-64	15	1.1%	26	3.1%
65 and Over	1	0.1%	1	0.1%
Unknown	0	0.0%	0	0.0%

\* Full-time Student Equivalent (FTSE) is based on 12 SCH.

\*\* Extension Centers include non-campus locations that are staffed, have regular posted hours, and offer credit courses on a regular basis (every semester). Site-based instruction includes various credit and non-credit classes and training offered or provided to businesses, government entities, high schools, correctional institutions, and community groups.

\*\*\* Students that attend more than one extension center are counted only once in the Extension Center Total; therefore, this total is unduplicated and will not match the sum of all of the extension centers.

NOTES: Students who attend multiple locations are counted once at each location. Percents may not add to 100 due to rounding.

Source: ACC Computer System - uncertified data

**Student Headcount  
Extension Centers\*\* by Location  
Fall 2003**

	Akins	Bastrop	Fredericksburg	Georgetown
<b>Student Headcount</b>	<b>50</b>	<b>44</b>	<b>297</b>	<b>256</b>
<b>Credit Hours</b>	150	168	1,450	1,131
<b>Contact Hours</b>	2,560	2,688	27,168	20,128
<b>Full-time Equivalent Student (FTSE)*</b>	12.5	14.0	120.8	94.3
<b>Gender</b>				
Male	24 48.0%	18 40.9%	76 25.6%	91 35.5%
Female	26 52.0%	26 59.1%	221 74.4%	165 64.5%
<b>Ethnicity</b>				
White	24 48.0%	35 79.5%	221 74.4%	202 78.9%
Hispanic	15 30.0%	6 13.6%	39 13.1%	37 14.5%
Black	6 12.0%	1 2.3%	2 0.7%	7 2.7%
Asian/Pacific Islander	1 2.0%	1 2.3%	0 0.0%	3 1.2%
Am. Indian/Alaskan Native	1 2.0%	1 2.3%	1 0.3%	2 0.8%
Other/Unknown	3 6.0%	0 0.0%	34 11.4%	5 2.0%
<b>Age</b>				
16 and Under	1 2.0%	7 15.9%	26 8.8%	60 23.4%
17	1 2.0%	3 6.8%	40 13.5%	77 30.1%
18	6 12.0%	10 22.7%	24 8.1%	24 9.4%
19-21	15 30.0%	5 11.4%	66 22.2%	20 7.8%
22-24	6 12.0%	7 15.9%	34 11.4%	18 7.0%
25-30	8 16.0%	2 4.5%	31 10.4%	20 7.8%
31-35	6 12.0%	3 6.8%	20 6.7%	20 7.8%
36-50	7 14.0%	7 15.9%	47 15.8%	15 5.9%
51-64	0 0.0%	0 0.0%	9 3.0%	2 0.8%
65 and Over	0 0.0%	0 0.0%	0 0.0%	0 0.0%
Unknown	0 0.0%	0 0.0%	0 0.0%	0 0.0%

\* Full-time Student Equivalent (FTSE) is based on 12 SCH.

\*\* Extension Centers include non-campus locations that are staffed, have regular posted hours, and offer credit courses on a regular basis (every semester).

NOTES: Students are counted once for each location they attend. Percents may not add to 100 due to rounding.

Source: ACC Computer System - uncertified data

**Student Headcount  
Extension Centers\*\* by Location (continued)  
Fall 2003**

	Hays	Lockhart	Round Rock	San Marcos High School	San Marcos Lamar Center
<b>Student Headcount</b>	<b>99</b>	<b>60</b>	<b>137</b>	<b>398</b>	<b>160</b>
<b>Credit Hours</b>	345	303	492	1,749	781
<b>Contact Hours</b>	5,520	4,848	10,752	30,480	13,104
<b>Full-time Equivalent Student (FTSE)*</b>	28.8	25.3	41.0	145.8	65.1
<b>Gender</b>					
Male	44 44.4%	22 36.7%	19 13.9%	182 45.7%	84 52.5%
Female	55 55.6%	38 63.3%	118 86.1%	216 54.3%	76 47.5%
<b>Ethnicity</b>					
White	67 67.7%	36 60.0%	88 64.2%	245 61.6%	110 68.8%
Hispanic	22 22.2%	19 31.7%	25 18.2%	127 31.9%	44 27.5%
Black	2 2.0%	2 3.3%	13 9.5%	9 2.3%	2 1.3%
Asian/Pacific Islander	1 1.0%	3 5.0%	5 3.6%	3 0.8%	1 0.6%
Am. Indian/Alaskan Native	4 4.0%	0 0.0%	0 0.0%	3 0.8%	1 0.6%
Other/Unknown	3 3.0%	0 0.0%	6 4.4%	11 2.8%	2 1.3%
<b>Age</b>					
16 and Under	5 5.1%	1 1.7%	5 3.6%	21 5.3%	3 1.9%
17	44 44.4%	56 93.3%	14 10.2%	45 11.3%	16 10.0%
18	11 11.1%	3 5.0%	9 6.6%	46 11.6%	26 16.3%
19-21	18 18.2%	0 0.0%	21 15.3%	151 37.9%	67 41.9%
22-24	6 6.1%	0 0.0%	10 7.3%	74 18.6%	26 16.3%
25-30	6 6.1%	0 0.0%	25 18.2%	29 7.3%	12 7.5%
31-35	2 2.0%	0 0.0%	18 13.1%	14 3.5%	5 3.1%
36-50	7 7.1%	0 0.0%	32 23.4%	17 4.3%	4 2.5%
51-64	0 0.0%	0 0.0%	2 1.5%	1 0.3%	1 0.6%
65 and Over	0 0.0%	0 0.0%	1 0.7%	0 0.0%	0 0.0%
Unknown	0 0.0%	0 0.0%	0 0.0%	0 0.0%	0 0.0%

\* Full-time Student Equivalent (FTSE) is based on 12 SCH.

\*\* Extension Centers include locations other than campuses that are staffed, have regular posted hours, and offer credit courses on a regular basis (every semester).

NOTES: Students who attend multiple locations are counted once at each location. Percents may not add to 100 due to rounding.

Source: ACC Computer System - uncertified data