

## Section 3

# Credit Programs

*This section can be used for finding:*

- *programs of study offered at ACC.*
- *student headcount, enrollment, contact hours, and semester credit hours broken out by dean area and location.*

### Contents

Summary .....	26
Programs of Study .....	27
Associate of Arts (AA) Programs .....	27
Associate of Science (AS) Programs .....	27
Associate of Applied Science (AAS) Programs .....	28
Certificate Programs .....	29
Marketable Skills Award .....	30
Student Headcount in Credit Programs .....	31
Student Headcount in Credit Programs by County Map .....	32
Contact Hours .....	33
Semester Credit Hours .....	33
Student Headcount, Course Enrollment, and Contact Hours by Location .....	34
Telecommunicated Course Enrollment and Contact Hours .....	35
Contact Hours by Academic/Workforce Area .....	36
Annual Contact Hours by Dean Area .....	37
Course Enrollment .....	38
Academic Areas .....	38
Workforce Areas .....	40
Semester Credit Hours .....	42
Academic Areas .....	42
Workforce Areas .....	44
Contact Hours .....	46
Academic Areas .....	46
Workforce Areas .....	48

### Useful Terms

**Contact Hour** - represent the number of hours of instruction provided to students in a given course; includes both lecture and/or laboratory time.

**Enrollment** - the number of students enrolled in a course. Duplicated enrollment occurs when a student is counted more than one time because they are enrolled in more than one course.

**Headcount** - the number of students enrolled in one or more courses. This number may be duplicated or unduplicated.

**Semester Credit Hours (SCH)** – defined as one clock hour of class per week.

## **Credit Programs Summary**

- Austin Community College's (ACC) Fall 2004 student headcount in credit programs increased 142 students from the previous fall term for a total of 29,004 students.
- Academic/Transfer contact hours accounted for 79% of total contact hours in Fall 2004, a percentage virtually unchanged since Fall 2000.
- Among the six main ACC campuses, the only campus that saw increases in headcounts, course enrollments and contact hours in Fall 2004 was Eastview.
- Examination of Fall 2004 Telecommunicated delivery methods revealed a 17% increase in course enrollments and a 20% increase in contact hours in courses delivered via personal computers with modems compared to Fall 2003.
- Academic year 2004 annual contact hours for the Health Science dean area increased 9% from the previous academic year, the highest increase among all dean areas.

## Programs of Study Fall 2004

The educational programs of Austin Community College include workforce programs and academic/programs. The workforce programs are designed to meet the increasing demand for skilled technicians and paraprofessionals for employment in industry and business. ACC awards both associate of applied science (AAS) degrees and certificates in workforce programs. Associate of arts (AA) and associate of science (AS) degrees are awarded as transfer degrees and correspond to the first two years of a baccalaureate program at four-year institutions.

The programs and program areas in which Austin Community College offers courses include the following:

#### **Associate of Arts (AA) Programs**

Anthropology  
Art  
Creative Writing  
Dance  
Drama  
Economics  
English  
Foreign Language  
General Studies in Liberal Arts  
General Studies in Early Childhood Education  
General Studies in Grade 4-8 Certification  
Geography  
Government  
History  
Journalism  
Music  
Philosophy  
Psychology  
Radio-Television-Film  
Social Work  
Sociology  
Speech

#### **Associate of Science (AS) Programs**

Biology  
Business Administration  
Chemistry  
Computer Science  
Engineering  
Environmental Science & Technology  
General Studies in Science  
Geology  
Health and Kinesiology  
Health  
Kinesiology  
Mathematics  
Physics/Astronomy  
Pre-Dental/Pre-Medical/Pre-Pharmacy/Pre-Veterinary

## **Associate of Applied Science (AAS) Programs**

Accounting  
Accounting Specialist  
    Accounting Technician  
    Professional Accountant  
Automotive Technology  
Biotechnology  
Building Construction Technology  
Business and Technical Communications  
    Business and Government Communications  
    Technical Communications  
Child Development  
Commercial Music Management  
Computer Information Technology  
    Computer Programming  
    Local Area Network Systems Network  
    Administration  
    Microcomputer Applications Support  
Criminal Justice  
    Corrections  
    Law Enforcement  
Culinary Arts  
Dental Hygiene  
Digital Publishing and Graphics Technology  
Electronics  
    Automation, Robotics and Controls Technology  
    Computer Electronics/Telecommunications  
    Engineering Technology  
    Semiconductor Manufacturing Technology  
    Technician  
Emergency Medical Services Professions  
Engineering Design Graphics  
    Architectural Specialization  
    Electronic Graphics Specialization  
    Interdisciplinary Specialization  
    Mechanical Specialization  
Environmental Science and Technology  
Financial Management & Mortgage Banking  
Fire Protection  
Heating, Air Conditioning and Refrigeration  
    Technology  
Hospitality Management  
    Baccalaureate Prep Specialization  
    Food and Lodging Specialization  
    Hotel and Lodging Specialization  
Human Services  
    Addictions Counseling  
    General Human Services  
    Interpreter Preparation Program  
    Therapeutic Recreation  
Jewelry  
Land Surveying Technology  
Legal Assistant  
Management  
Marketing  
    Fashion Merchandising  
    Marketing  
Medical Laboratory Technology  
Meeting and Events Planning  
Nursing (Professional)  
    Nursing Mobility Track  
    Nursing Traditional Track  
Occupational Therapy Assistant  
Office Administration  
    Administrative Assistant  
    Legal Administrative Assistant  
    Medical Administrative Assistant  
Personal Fitness Trainer  
Photographic Technology  
    Advertising-Fashion Focus  
    People-Portrait Focus  
Physical Therapist Assistant  
Radiology  
Real Estate  
Sonography  
    Diagnostic Cardiac Sonography  
    Diagnostic Medical Sonography  
Surgical Technology  
Travel and Tourism  
Visual Communication Design  
    2D Animation Specialization  
    3D Animation Specialization  
    Graphic Design Specialization  
    Interactive Design Specialization  
Welding Technology  
    Art Metals  
    Code Welding

**Source:** Office of Admissions & Records

#### Advanced Technical Certificate

Accounting  
Environmental Science and Technology  
Legal Assistant

#### Enhanced Skills Certificate

Automotive Technology  
Child Development  
Marketing

#### Certificate Programs

Accounting  
Accounting Clerk  
Automotive Technology  
Automotive Brake & Suspension  
Automotive Drive Train Specialist  
Automotive Engine Performance  
Specialist  
Automotive Heating & Air Conditioning  
Automotive Technician  
Marine Engine Repair  
Motorcycle Repair  
Small Engine Repair  
Biotechnology  
Building Construction Technology  
Carpentry  
Construction Manager  
Woodworking  
Business and Technical  
Communications  
Business and Government  
Communications  
Technical Communications  
Child Development  
Computer Information Technology  
Computer Information Technology  
Database  
Computer Programming-C++ Track  
Computer Programming-Java Track  
Local Area Network Systems Network  
Administration  
Web Designer Specialist

#### Certificate Programs (continued)

Criminal Justice  
Texas Peace Officer Sequence  
Culinary Arts  
Culinarian  
Culinary Arts  
Digital Publishing and Graphics Technology  
Printing Prepress and Production  
Electronics  
Automation, Robotics, and Controls Technology  
Computer Electronics/Telecommunications  
Engineering Technology  
Semiconductor Manufacturing Technology  
Specialist  
Technician  
Emergency Medical Services Professions  
EMT Intermediate Certificate  
EMT Paramedic Certificate  
Engineering Design Graphics  
Engineering Design Graphics  
Integrated Circuit Layout and Design  
Specialization  
Financial Management and Mortgage Banking  
Mortgage Banking  
Fire Protection  
Firefighter  
Heating, Air Conditioning, and Refrigeration  
Hospitality Management  
Human Services  
Addictions Counseling  
American Sign Language Studies  
Interpreter Preparation Program  
Therapeutic Recreation  
International Business  
Jewelry  
Land Surveying Technology  
Management  
Administrative Management  
Management Specialities Leadership  
Small Business Management  
Marketing  
Fashion Merchandising  
Marketing

**Certificate Programs  
(continued)**

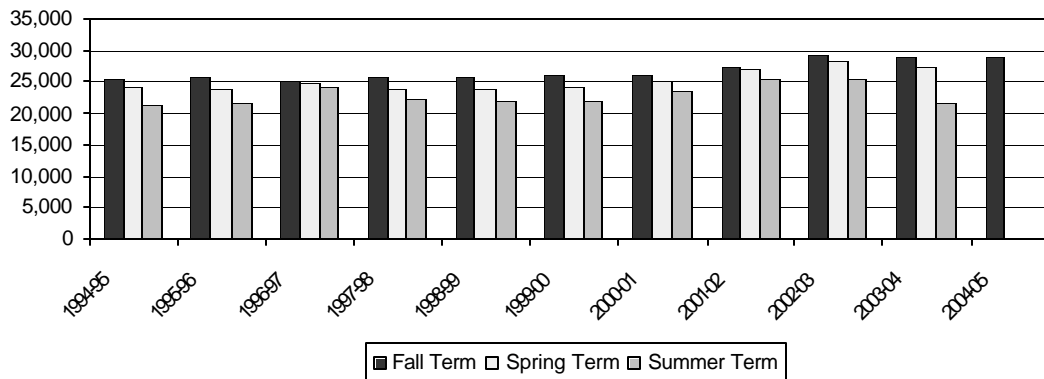
Medical Coding  
Meeting and Events Planning  
    Meeting Planning  
Nursing (Vocational)  
Office Administration  
    Administrative Assistant  
    Legal Administrative  
    Medical Administrative Assistant  
    Medical Office Assistant  
    Office Assistant  
    Software Applications Specialist  
Personal Fitness Trainer  
Pharmacy Technician  
Photographic Technology  
    Photographer's Assistant  
    Photographic Artist  
Radiology  
    Cardiovascular Interventional Radiology  
    Computerized Tomography  
    Magnetic Resonance Imaging  
Radio-Television-Film  
    Film/Production Video  
    Film/Video Production Management  
    Industrial Video  
    Industrial Video Production Management  
Real Estate  
Surgical Technology  
Travel and Tourism  
Visual Communication Design  
    2D Animation  
    3D Animation  
    Graphic Design  
    Interactive Design  
    Online Web  
    Prepress Certificate  
Welding Technology  
    Art Metals  
    Inspection  
    Metal Sculpture  
    Pipe Welding  
    Plate Welding  
    Ultrahigh Purity Piping

**Marketable Skills Award**

Accounting  
Accounting Specialist  
Accounting Technician  
Professional Accountant  
Building Construction Technology  
Child Development  
    Comprehensive CDA Training Program  
Welding Technology  
    Inert Gas Welding

### Student Headcount in Credit Programs Academic Years 1974 - 2005

Academic Year	Fall Term	Spring Term	Summer Term
1973-74	1,793	2,809	1,916
1974-75	4,684	5,465	3,782
1975-76	6,688	6,151	4,332
1976-77	6,495	6,727	4,405
1977-78	7,770	7,904	6,128
1978-79	9,140	9,109	7,453
1979-80	11,036	10,763	8,620
1980-81	12,537	12,735	9,274
1981-82	13,158	12,740	11,183
1982-83	15,371	14,797	11,232
1983-84	16,674	16,227	12,001
1984-85	17,807	17,615	12,770
1985-86	17,549	16,347	13,964
1986-87	18,340	17,020	14,937
1987-88	19,905	18,460	16,449
1988-89	21,378	20,598	19,352
1989-90	23,067	22,702	19,302
1990-91	24,009	22,054	19,272
1991-92	23,048	23,236	20,896
1992-93	25,275	23,241	20,478
1993-94	24,236	24,433	20,679
1994-95	25,276	24,241	21,363
1995-96	25,618	23,919	21,606
1996-97	25,174	24,768	24,159 *
1997-98	25,796	23,833	22,348
1998-99	25,609	23,720	21,994
1999-00	25,914	24,099	22,172
2000-01	25,856	25,048	23,575
2001-02	27,577	26,902	25,263
2002-03	29,156	28,233	25,309
2003-04	28,862	27,496	21,770 **
2004-05	29,004		

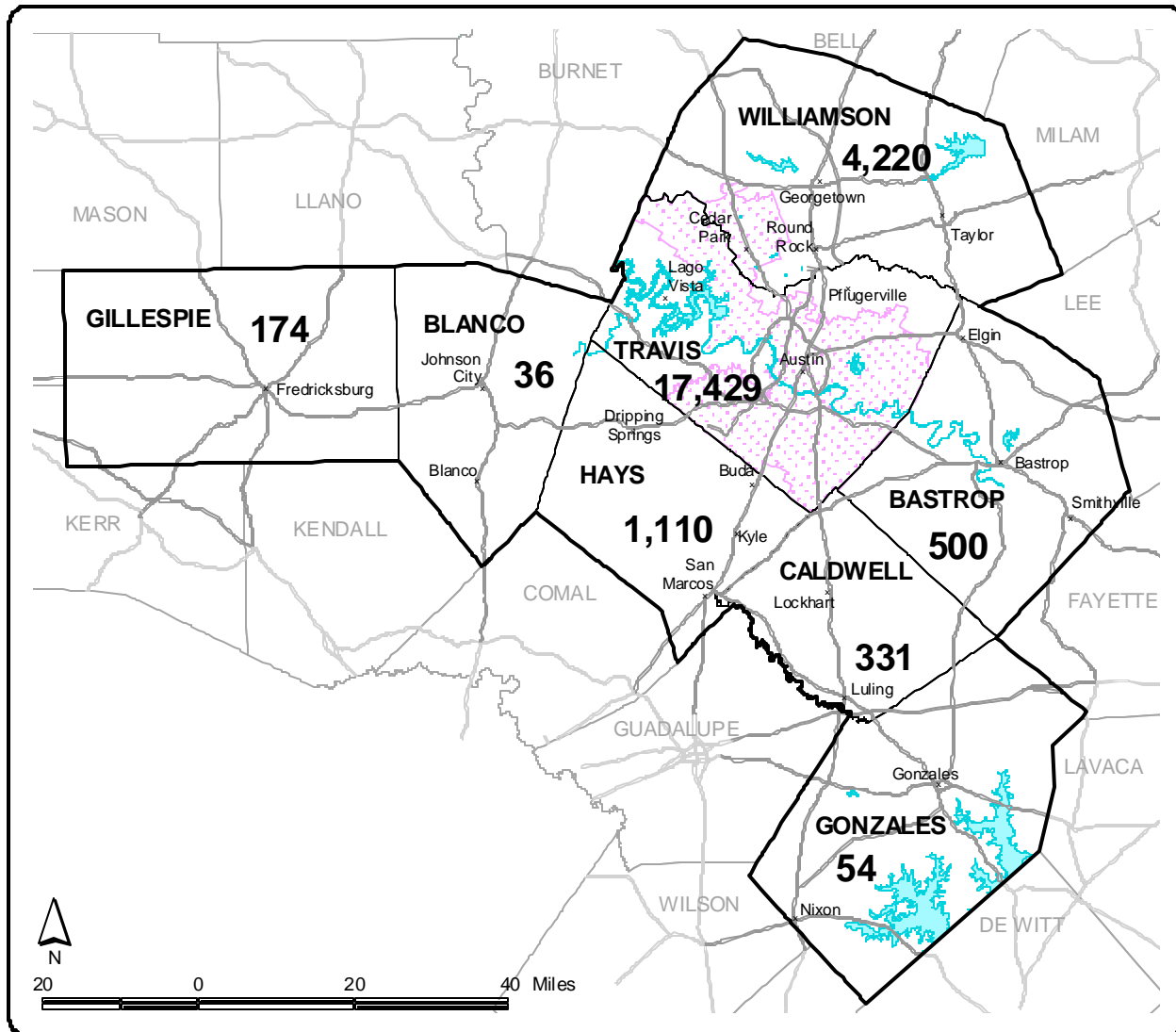


\* Includes spring flex headcount.

\*\* Change from reporting twice during summer to once.

Source: THECB Certified Reports

## Student Headcount in Credit Programs by County Map Fall 2004



- 123** Headcount
- x Cities
- ACC Service Area
- Counties
- Highways
- Lakes
- ACC Taxing District

Source: THECB Certified Reports



**Contact Hours  
Fall 2000 - 2004**

<b>Area</b>	<b>Fall 2000</b>	<b>Fall 2001</b>	<b>Fall 2002</b>	<b>Fall 2003</b>	<b>Fall 2004</b>
<b>Academic/Transfer</b>	3,031,472	3,206,840	3,365,492	3,395,016	3,409,838
<b>% of Total</b>	79.6%	78.8%	78.4%	78.6%	79.2%
<b>Workforce</b>	775,328	862,528	927,936	923,216	893,152
<b>% of Total</b>	20.4%	21.2%	21.6%	21.4%	20.8%
<b>TOTAL</b>	<b>3,806,800</b>	<b>4,069,368</b>	<b>4,293,428</b>	<b>4,318,232</b>	<b>4,302,990</b>

**Semester Credit Hours  
Fall 2000 - 2004**

	<b>Fall 2000</b>	<b>Fall 2001</b>	<b>Fall 2002</b>	<b>Fall 2003</b>	<b>Fall 2004</b>
<b>Semester Credit Hours (SCH)</b>	197,704	210,069	221,836	223,500	224,210
<b>Headcount</b>	25,856	27,577	29,156	28,862	29,004
<b>Average SCH per Student</b>	7.65	7.62	7.61	7.74	7.73
<b>Full-time Student Equivalent*</b>	13,180	14,005	14,789	14,900	14,947

\* Full-time Student Equivalent (FTSE) is based on 15 SCH. Past additions of the Fact Book calculated FTSE based on 12 SCH. To standardize reporting with that of the THECB, calculations are now based on 15 SCH.

NOTE: Percents may not add to 100 due to rounding.

Source: THECB Certified Reports

**Student Headcount, Course Enrollment, and Contact Hours  
by Location  
Fall 2004**

<b>Location</b>	<b>Headcount<sup>1</sup></b>	<b>Course Enrollment<sup>2</sup></b>	<b>Contact Hours<sup>3</sup></b>
<b>Cypress Creek Campus</b>	3,287	6,234	346,944
<b>Eastview Campus</b>	2,800	5,191	360,232
<b>Northridge Campus</b>	9,383	19,352	1,157,696
<b>Pinnacle Campus</b>	3,527	7,006	399,616
<b>Rio Grande Campus</b>	7,385	14,571	861,256
<b>Riverside Campus</b>	6,959	13,830	862,328
<b>Telecommunicated Instruction<sup>4</sup></b>	6,337	9,477	491,920
<b>Extension Centers<sup>5</sup></b>	1,338	2,002	104,928
<b>Site-Based Instruction<sup>6</sup></b>	1,040	1,353	83,776

<sup>1</sup> Students who attend multiple locations are counted once at each location.

<sup>2</sup> Students who enroll in more than one course are counted once for each course.

<sup>3</sup> An instructional unit of time in which a student has contact with an instructor; includes both lecture and laboratory time.

<sup>4</sup> Courses delivered to individuals and groups by synchronous or asynchronous methods. Delivery methods include instructional television (ITV) using recorded video programs shown on cable TV and on cassette, web-based courses (PCM), print-based courses (PRN) using a textbook, directed studies (DIR), interactive video classes (IVC) with groups of students at several sites, and live televised classes (LTV) to individual students at home or work via the Internet or cable television.

<sup>5</sup> Locations other than campuses that are staffed, have regular posted hours, and offer credit courses on a regular basis (every semester).

<sup>6</sup> Various credit and non-credit classes and training offered for businesses, government entities, high schools, correctional institutions, and community groups.

**Source:** ACC Computer System - uncertified data as of November 3, 2004

### 3. CREDIT PROGRAMS

## Telecommunicated Instruction<sup>1</sup> Course Enrollment and Contact Hours Fall 2000 - 2004

	Fall 2000	Fall 2001	Fall 2002	Fall 2003	Fall 2004
<b>COURSE ENROLLMENT<sup>2</sup></b>					
Instructional Television (ITV)	2,374	2,299	2,023	1,964	1,885
Directed Study (DIR)	69	60	113	88	106
Personal Computer w/ Modem (PCM)	2,401	2,947	4,139	5,009	5,874
Print-Based (PRN)	947	1,228	1,133	990	990
Interactive Video (IVC)	204	594	455	636	615
<b>TOTAL</b>	<b>5,995</b>	<b>7,128</b>	<b>7,863</b>	<b>8,687</b>	<b>9,470</b>

	Fall 2000	Fall 2001	Fall 2002	Fall 2003	Fall 2004
<b>CONTACT HOURS<sup>3</sup></b>					
Instructional Television (ITV)	120,048	113,504	99,456	96,352	92,112
Directed Study (DIR)	3,840	3,120	10,064	7,504	10,976
Personal Computer w/ Modem (PCM)	127,760	157,072	219,440	259,536	311,568
Print-Based (PRN)	44,464	58,656	54,896	48,000	48,560
Interactive Video (IVC)	10,384	29,344	27,632	34,768	28,368
<b>TOTAL</b>	<b>306,496</b>	<b>361,696</b>	<b>411,488</b>	<b>446,160</b>	<b>491,584</b>

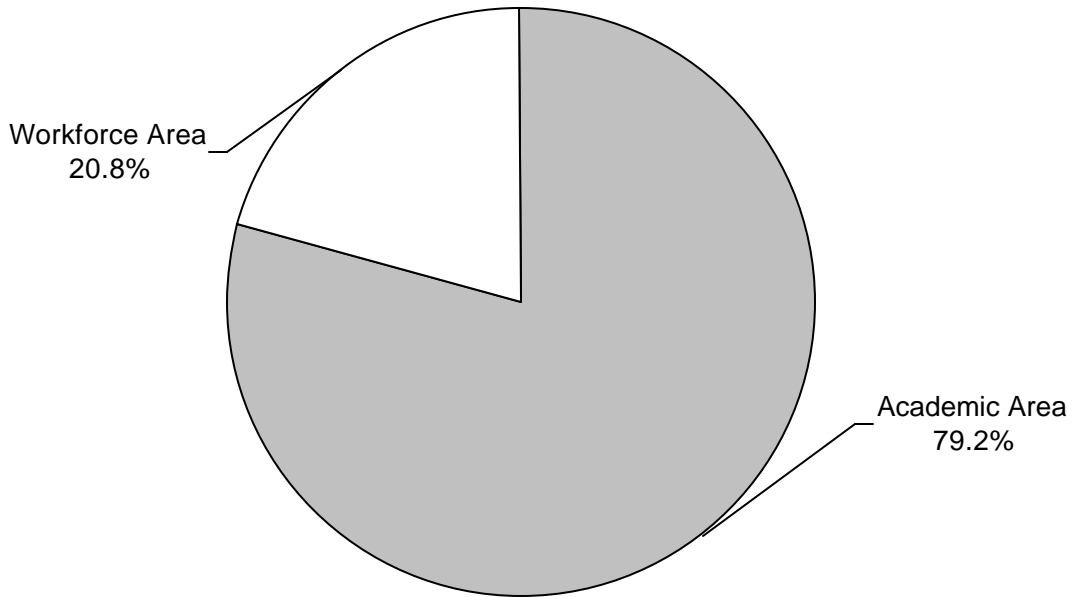
<sup>1</sup> Courses delivered to individuals and groups by synchronous or asynchronous methods. Delivery methods include instructional television (ITV) using recorded video programs shown on cable TV and on cassette, web-based courses (PCM), print-based courses (PRN) using a textbook, directed studies (DIR), interactive video classes (IVC) with groups of students at several sites, and live televised classes (LTV) to individual students at home or work via the Internet or cable television.

<sup>2</sup> Students who enroll in more than one course are counted once for each course.

<sup>3</sup> An instructional unit of time in which a student has contact with an instructor; includes both lecture and laboratory time.

**Source:** ACC Computer System - uncertified data as of November 3, 2004

### Contact Hours by Academic/Workforce Area Fall 2004



<u>Area</u>	<u>Fall 2004</u>	<u>Percent of Total</u>
<b>Academic</b>	3,409,838	79.2%
<b>Workforce</b>	893,152	20.8%
<b>TOTAL</b>	<b>4,302,990</b>	

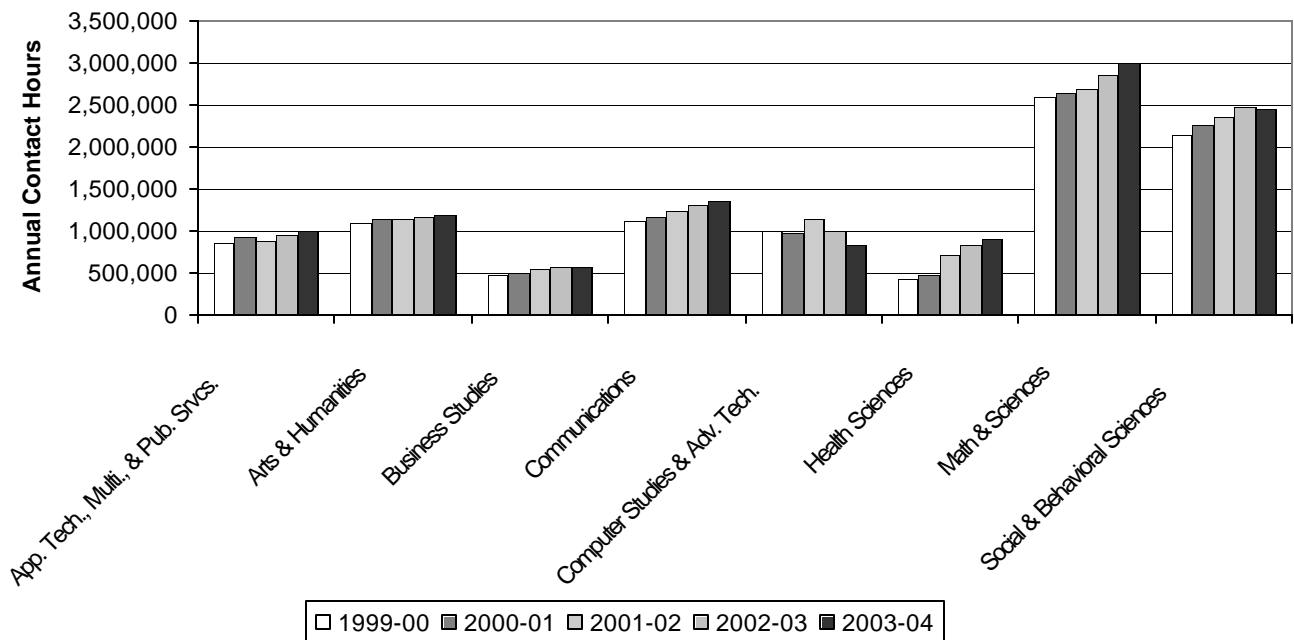
NOTE: Percents may not add to 100 due to rounding.

Source: THECB Certified Reports

### 3. CREDIT PROGRAMS

## Annual Contact Hours by Dean Area Academic Years 2000 - 2004

Dean Area	1999-00	2000-01	2001-02	2002-03	2003-04
Applied Technologies, Multimedia, & Public Services	868,592	939,504	887,040	954,168	1,011,904
Arts & Humanities	1,101,092	1,139,216	1,138,080	1,158,720	1,197,248
Business Studies	481,696	499,632	553,056	574,144	571,952
Communications	1,113,520	1,164,448	1,237,584	1,315,968	1,345,600
Computer Studies & Advanced Technology	992,816	985,232	1,145,328	994,928	828,816
Health Sciences	439,568	468,448	717,264	828,848	903,256
Math & Sciences	2,593,888	2,643,184	2,685,360	2,861,392	2,991,504
Social & Behavioral Sciences	2,147,600	2,258,160	2,366,400	2,474,904	2,450,864
<b>TOTAL</b>	<b>9,738,772</b>	<b>10,097,824</b>	<b>10,730,112</b>	<b>11,163,072</b>	<b>11,301,144</b>



NOTES: Data reflect current organization of the College. Disciplines are included as part of their current dean area for all years.

Source: ACC Computer System - uncertified data as of November 3, 2004

**Course Enrollment  
Academic Areas  
Fall 2000 - 2004**

<b>Arts &amp; Humanities</b>	<b>Fall 2000</b>	<b>Fall 2001</b>	<b>Fall 2002</b>	<b>Fall 2003</b>	<b>Fall 2004</b>
Art	1,203	1,315	1,335	1,353	1,407
Creative Writing	97	107	104	134	141
Dance	137	134	135	144	141
Drama	207	218	209	217	257
English as a Second Language	293	527	558	621	581
French	232	253	260	270	258
German	94	121	124	128	131
Humanities	277	291	292	314	224
Japanese	83	112	144	171	155
Latin	27	22	22	20	23
Philosophy	1,171	1,349	1,304	1,449	1,549
Religion	132	112	112	123	122
Russian	21	32	23	24	21
Spanish	2,023	2,119	2,258	2,251	2,329
<b>TOTAL</b>	<b>5,997</b>	<b>6,712</b>	<b>6,880</b>	<b>7,219</b>	<b>7,339</b>

<b>Communications</b>	<b>Fall 2000</b>	<b>Fall 2001</b>	<b>Fall 2002</b>	<b>Fall 2003</b>	<b>Fall 2004</b>
English	6,940	7,057	7,647	7,827	7,940
Journalism	159	159	151	194	205
Reading Skills - Developmental	1,238	1,242	1,171	1,084	1,076
Speech	1,247	1,553	1,791	2,040	2,162
Study Skills	42	87	63	58	83
Writing Skills - Developmental	774	828	862	827	670
<b>TOTAL</b>	<b>10,400</b>	<b>10,926</b>	<b>11,685</b>	<b>12,030</b>	<b>12,136</b>

NOTES: Data reflect current organization of the College. Disciplines are included as part of their current dean area for all years.

Source: ACC Computer System - uncertified data as of November 3, 2004

### 3. CREDIT PROGRAMS

#### Course Enrollment Academic Areas Fall 2000 - 2004

<b>Math &amp; Sciences</b>	<b>Fall 2000</b>	<b>Fall 2001</b>	<b>Fall 2002</b>	<b>Fall 2003</b>	<b>Fall 2004</b>
Astronomy	266	298	388	360	348
Biology	2,314	2,575	2,944	3,513	3,357
Biotechnology	24	29	35	47	35
Chemistry	1,212	1,254	1,318	1,371	1,452
Engineering	74	78	84	88	89
Environmental Science & Technology <sup>1</sup>	260	121	107	85	92
Geology	471	526	546	600	568
Mathematics	5,784	5,707	5,815	5,561	5,482
Mathematics - Developmental	4,891	5,682	6,024	6,251	6,592
Physics	599	669	731	754	736
<b>TOTAL</b>	<b>15,895</b>	<b>16,939</b>	<b>17,992</b>	<b>18,630</b>	<b>18,751</b>
<b>Social &amp; Behavioral Sciences</b>	<b>Fall 2000</b>	<b>Fall 2001</b>	<b>Fall 2002</b>	<b>Fall 2003</b>	<b>Fall 2004</b>
Anthropology	551	555	633	625	679
Economics	1,803	1,833	1,910	1,773	1,838
Geography	355	401	432	509	472
Government	5,471	5,685	5,876	5,878	5,868
History	5,548	5,815	6,255	6,262	6,535
Human Development	814	902	841	808	780
Military Science <sup>2</sup>	6	17	14	10	10
Psychology	2,877	2,824	3,199	3,219	3,362
Sociology	1,292	1,361	1,409	1,322	1,400
<b>TOTAL</b>	<b>18,717</b>	<b>19,393</b>	<b>20,569</b>	<b>20,406</b>	<b>20,944</b>
<b>SUBTOTAL FOR ACADEMIC</b>	<b>51,009</b>	<b>53,970</b>	<b>57,126</b>	<b>58,285</b>	<b>59,170</b>
<b>SUBTOTAL FOR WORKFORCE</b>	<b>18,880</b>	<b>19,860</b>	<b>20,241</b>	<b>19,779</b>	<b>19,846</b>
<b>GRAND TOTAL</b>	<b>69,889</b>	<b>73,830</b>	<b>77,367</b>	<b>78,064</b>	<b>79,016</b>

<sup>1</sup> Environmental Science & Technology was listed as Physical Science prior to Fall 2001.

<sup>2</sup> Data for Air Force Science are included in Military Science.

NOTES: Data reflect current organization of the College. Disciplines are included as part of their current dean area for all years.

Source: ACC Computer System - uncertified data as of November 3, 2004

**Course Enrollment  
Workforce Areas  
Fall 2000 - 2004**

<b>Applied Technologies, Multimedia, &amp; Public Services</b>	<b>Fall 2000</b>	<b>Fall 2001</b>	<b>Fall 2002</b>	<b>Fall 2003</b>	<b>Fall 2004</b>
Air Conditioning, Heating, & Refrigeration Technology	117	129	157	177	193
Automotive Technology	156	230	305	333	365
Building Construction Technology	273	298	340	386	405
Child Development	529	499	564	599	493
Commercial Music Management	388	406	469	442	465
Criminal Justice	501	552	658	646	662
Fire Protection Technology	205	201	204	210	306
Human Services	501	530	605	632	644
Jewelry	-	-	-	121	124
Legal Assistant <sup>1</sup>	186	223	270	305	314
Music <sup>2</sup>	633	628	602	561	545
Photography Technology	439	501	513	496	435
Radio-TV-Film <sup>2</sup>	285	311	313	321	240
Welding Technology	238	335	403	326	288
<b>TOTAL</b>	<b>4,451</b>	<b>4,843</b>	<b>5,403</b>	<b>5,555</b>	<b>5,479</b>

<b>Business Studies</b>	<b>Fall 2000</b>	<b>Fall 2001</b>	<b>Fall 2002</b>	<b>Fall 2003</b>	<b>Fall 2004</b>
Accounting	1,155	1,231	1,288	1,264	1,219
Culinary Arts	138	193	162	199	263
Fashion Merchandising <sup>3</sup>	53	-	-	-	-
Financial Management	127	209	253	166	186
Hospitality Management	60	90	116	67	99
International Business <sup>4</sup>	-	16	52	65	84
Management <sup>4</sup>	1,232	1,204	1,227	1,367	1,393
Marketing <sup>3</sup>	370	467	437	385	464
Meeting & Events Planning	-	-	-	52	28
Office Administration	214	259	286	284	290
Quality Assurance <sup>5</sup>	25	24	42	-	5
Real Estate	155	371	329	296	438
Technical Communications <sup>6</sup>	186	126	86	85	107
Travel and Tourism	47	73	35	44	10
<b>TOTAL</b>	<b>3,762</b>	<b>4,263</b>	<b>4,313</b>	<b>4,274</b>	<b>4,586</b>

<sup>1</sup> Legal Assistant was listed under Business Studies prior to Fall 2001.

<sup>2</sup> Music and Radio-TV-Film were listed under Arts & Humanities prior to Fall 2001.

<sup>3</sup> Data for Fashion Merchandising were included in Marketing effective Fall 2001.

<sup>4</sup> Data for International Business were included in Management prior to Fall 2001.

<sup>5</sup> Quality Assurance was listed as Quality Management Technology under Computer Studies & Advanced Tech. prior to Fall 2001.

<sup>6</sup> Technical Communications was listed under Applied Technologies, Multimedia, & Public Services prior to Fall 2001.

NOTES: Data reflect current organization of the College. Disciplines are included as part of their current dean area for all years.

Source: ACC Computer System - uncertified data as of November 3, 2004



### 3. CREDIT PROGRAMS

## Course Enrollment Workforce Areas Fall 2000- 2004

<b>Computer Studies &amp; Advanced Technology</b>	<b>Fall 2000</b>	<b>Fall 2001</b>	<b>Fall 2002</b>	<b>Fall 2003</b>	<b>Fall 2004</b>
Computer Information Technology	1,727	1,656	1,533	1,195	1,116
Computer Science	2,948	2,670	2,190	1,636	1,576
Digital Publishing & Graphics Tech. <sup>1,2</sup>	224	215	180	41	-
Electronics	663	569	436	323	229
Engineering Design Graphics	462	496	486	438	388
Geomatics/Land Surveying Technology	57	23	46	41	48
Visual Communication Design <sup>1</sup>	834	910	953	942	975
<b>TOTAL</b>	<b>6,915</b>	<b>6,539</b>	<b>5,824</b>	<b>4,616</b>	<b>4,332</b>
<b>Health Sciences</b>					
	<b>Fall 2000</b>	<b>Fall 2001</b>	<b>Fall 2002</b>	<b>Fall 2003</b>	<b>Fall 2004</b>
Allied Health Sciences	396	416	568	690	827
Associate Degree Nursing	529	797	901	1,132	966
Dental Hygiene	-	-	-	72	152
Diagnostic Medical Imaging-Radiology	256	223	248	259	274
Diagnostic Medical Imaging-Sonography	89	113	130	192	193
Emergency Medical Services Technology	130	202	262	218	224
Health & Kinesiology <sup>3</sup>	1,735	1,755	1,861	1,898	1,906
Medical Coding <sup>4</sup>	-	77	91	76	102
Medical Lab Technology	57	42	62	66	95
Occupational Therapy Assistant	77	43	35	43	36
Pharmacy Technology	79	74	90	94	94
Physical Fitness Technology	38	28	32	37	38
Physical Therapist Assistant	104	58	50	60	78
Surgical Technology	57	50	70	80	113
Vocational Nursing	205	337	301	417	351
<b>TOTAL</b>	<b>3,752</b>	<b>4,215</b>	<b>4,701</b>	<b>5,334</b>	<b>5,449</b>
<b>SUBTOTAL FOR WORKFORCE</b>	<b>18,880</b>	<b>19,860</b>	<b>20,241</b>	<b>19,779</b>	<b>19,846</b>
<b>SUBTOTAL FOR ACADEMIC</b>	<b>51,009</b>	<b>53,970</b>	<b>57,126</b>	<b>58,285</b>	<b>59,170</b>
<b>GRAND TOTAL</b>	<b>69,889</b>	<b>73,830</b>	<b>77,367</b>	<b>78,064</b>	<b>79,016</b>

<sup>1</sup> Digital Publishing & Graphics Technology (as Printing & Desktop Publishing) and Visual Communication Design were listed under Applied Technologies, Multimedia, & Public Services prior to Fall 2001.

<sup>2</sup> Data for Digital Publishing & Graphics Technology are included in Visual Communication Design starting Fall 2004.

<sup>3</sup> Health & Kinesiology was listed under Math & Sciences prior to Fall 2001.

<sup>4</sup> Medical Coding began in Fall 2001.

NOTES: Data reflect current organization of the College. Disciplines are included as part of their current dean area for all years.

Source: ACC Computer System - uncertified data as of November 3, 2004

**Semester Credit Hours  
Academic Areas  
Fall 2000 - 2004**

<b>Arts &amp; Humanities</b>	<b>Fall 2000</b>	<b>Fall 2001</b>	<b>Fall 2002</b>	<b>Fall 2003</b>	<b>Fall 2004</b>
Art	3,609	3,945	4,005	4,059	4,221
Creative Writing	291	321	312	402	423
Dance	163	158	165	247	243
Drama	621	610	607	631	745
English as a Second Language	879	1,581	1,674	1,863	1,743
French	1,086	1,149	1,252	1,298	1,242
German	458	577	594	620	641
Humanities	831	873	876	942	672
Japanese	393	536	680	777	711
Latin	135	110	110	100	115
Philosophy	3,513	4,047	3,912	4,347	4,647
Religion	396	336	336	369	366
Russian	105	144	115	120	105
Spanish	9,296	9,807	10,375	10,364	10,757
<b>TOTAL</b>	<b>21,776</b>	<b>24,194</b>	<b>25,013</b>	<b>26,139</b>	<b>26,631</b>

<b>Communications</b>	<b>Fall 2000</b>	<b>Fall 2001</b>	<b>Fall 2002</b>	<b>Fall 2003</b>	<b>Fall 2004</b>
English	20,820	21,171	22,941	23,481	23,820
Journalism	477	477	453	582	615
Reading Skills - Developmental	3,714	3,726	3,511	3,252	3,228
Speech	3,741	4,659	5,373	6,120	6,486
Study Skills	119	261	157	174	193
Writing Skills - Developmental	2,322	2,480	2,586	2,479	2,010
<b>TOTAL</b>	<b>31,193</b>	<b>32,774</b>	<b>35,021</b>	<b>36,088</b>	<b>36,352</b>

NOTES: Data reflect current organization of the College. Disciplines are included as part of their current dean area for all years.

Source: ACC Computer System - uncertified data as of November 3, 2004

### 3. CREDIT PROGRAMS

#### Semester Credit Hours Academic Areas Fall 2000- 2004

<b>Math &amp; Sciences</b>	<b>Fall 2000</b>	<b>Fall 2001</b>	<b>Fall 2002</b>	<b>Fall 2003</b>	<b>Fall 2004</b>
Astronomy	798	894	1,136	1,056	1,022
Biology	8,580	9,619	11,007	12,554	11,291
Biotechnology	85	103	132	154	106
Chemistry	4,848	5,016	5,272	5,484	5,808
Engineering	167	196	202	220	215
Environmental Science & Technology <sup>1</sup>	780	363	324	255	278
Geology	1,580	1,796	1,928	2,094	1,980
Mathematics	18,786	18,693	18,955	18,100	17,827
Mathematics - Developmental	14,393	16,584	17,695	18,378	19,610
Physics	2,359	2,662	2,901	3,002	2,944
<b>TOTAL</b>	<b>52,376</b>	<b>55,926</b>	<b>59,552</b>	<b>61,297</b>	<b>61,081</b>
<b>Social &amp; Behavioral Sciences</b>	<b>Fall 2000</b>	<b>Fall 2001</b>	<b>Fall 2002</b>	<b>Fall 2003</b>	<b>Fall 2004</b>
Anthropology	1,653	1,665	1,899	1,875	2,037
Economics	5,409	5,499	5,730	5,319	5,514
Geography	1,079	1,228	1,314	1,548	1,446
Government	16,413	17,055	17,628	17,634	17,604
History	16,644	17,445	18,765	18,786	19,605
Human Development	1,316	1,504	1,445	1,396	1,350
Military Science <sup>2</sup>	12	27	23	16	16
Psychology	8,631	8,472	9,597	9,657	10,086
Sociology	3,876	4,083	4,227	3,966	4,200
<b>TOTAL</b>	<b>55,033</b>	<b>56,978</b>	<b>60,628</b>	<b>60,197</b>	<b>61,858</b>
<b>SUBTOTAL FOR ACADEMIC</b>	<b>160,378</b>	<b>169,872</b>	<b>180,214</b>	<b>183,721</b>	<b>185,922</b>
<b>SUBTOTAL FOR WORKFORCE</b>	<b>55,428</b>	<b>57,695</b>	<b>59,093</b>	<b>57,831</b>	<b>57,941</b>
<b>GRAND TOTAL</b>	<b>215,806</b>	<b>227,567</b>	<b>239,307</b>	<b>241,552</b>	<b>243,863</b>

<sup>1</sup> Environmental Science & Technology was listed as Physical Science prior to Fall 2001.

<sup>2</sup> Data for Air Force Science are included in Military Science.

NOTES: Data reflect current organization of the College. Disciplines are included as part of their current dean area for all years.

Source: ACC Computer System - uncertified data as of November 3, 2004

**Semester Credit Hours  
Workforce Areas  
Fall 2000 - 2004**

<b>Applied Technologies, Multimedia, &amp; Public Services</b>	<b>Fall 2000</b>	<b>Fall 2001</b>	<b>Fall 2002</b>	<b>Fall 2003</b>	<b>Fall 2004</b>
Air Conditioning, Heating, & Refrigeration Technology	458	510	620	700	756
Automotive Technology	624	920	1,220	1,332	1,460
Building Construction Technology	930	1,038	1,198	1,342	1,284
Child Development	1,811	1,742	1,926	2,066	1,637
Commercial Music Management	1,113	1,184	1,399	1,323	1,366
Criminal Justice	1,533	1,680	2,001	1,968	2,023
Fire Protection Technology	699	684	689	717	1,008
Human Services	1,757	1,910	2,158	2,224	2,263
Jewelry	-	-	-	484	496
Legal Assistant <sup>1</sup>	558	669	810	915	942
Music <sup>2</sup>	1,265	1,250	1,221	1,164	1,146
Photography Technology	1,486	1,710	1,743	1,712	1,485
Radio-TV-Film <sup>2</sup>	890	933	939	963	720
Welding Technology	952	1,340	1,612	1,304	1,152
<b>TOTAL</b>	<b>14,076</b>	<b>15,570</b>	<b>17,536</b>	<b>18,214</b>	<b>17,738</b>

<b>Business Studies</b>	<b>Fall 2000</b>	<b>Fall 2001</b>	<b>Fall 2002</b>	<b>Fall 2003</b>	<b>Fall 2004</b>
Accounting	3,514	3,768	3,968	3,784	3,610
Culinary Arts	358	552	458	532	731
Fashion Merchandising <sup>3</sup>	159	-	-	-	-
Financial Management	381	627	759	498	558
Hospitality Management	158	224	295	201	297
International Business <sup>4</sup>	-	48	156	195	252
Management <sup>4</sup>	3,696	3,612	3,681	4,101	4,179
Marketing <sup>3</sup>	1,110	1,401	1,311	1,155	1,392
Meeting & Events Planning	-	-	-	156	84
Office Administration	570	699	711	703	760
Quality Assurance <sup>5</sup>	65	61	117	-	20
Real Estate	382	942	976	888	1,296
Technical Communications <sup>6</sup>	558	378	258	255	326
Travel and Tourism	141	231	105	132	30
<b>TOTAL</b>	<b>11,092</b>	<b>12,543</b>	<b>12,795</b>	<b>12,600</b>	<b>13,535</b>

<sup>1</sup> Legal Assistant was listed under Business Studies prior to Fall 2001.

<sup>2</sup> Music and Radio-TV-Film were listed under Arts & Humanities prior to Fall 2001.

<sup>3</sup> Data for Fashion Merchandising were included in Marketing effective Fall 2001.

<sup>4</sup> Data for International Business were included in Management prior to Fall 2001.

<sup>5</sup> Quality Assurance was listed as Quality Management Technology under Computer Studies & Advanced Tech. prior to Fall 2001.

<sup>6</sup> Technical Communications was listed under Applied Technologies, Multimedia, & Public Services prior to Fall 2001.

NOTES: Data reflect current organization of the College. Disciplines are included as part of their current dean area for all years.

Source: ACC Computer System - uncertified data as of November 3, 2004

### 3. CREDIT PROGRAMS

## Semester Credit Hours Workforce Areas Fall 2000 - 2004

<b>Computer Studies &amp; Advanced Technology</b>	<b>Fall 2000</b>	<b>Fall 2001</b>	<b>Fall 2002</b>	<b>Fall 2003</b>	<b>Fall 2004</b>
Computer Information Technology	5,416	5,164	4,789	3,741	3,489
Computer Science	8,932	8,119	6,662	4,975	4,809
Digital Publishing & Graphics Tech. <sup>1,2</sup>	778	788	656	162	-
Electronics	2,305	2,101	1,668	1,236	916
Engineering Design Graphics	1,848	1,984	1,944	1,737	1,552
Geomatics/Land Surveying Technology	177	73	138	123	144
Visual Communication Design <sup>1</sup>	2,502	2,730	2,859	3,619	3,707
<b>TOTAL</b>	<b>21,958</b>	<b>20,959</b>	<b>18,716</b>	<b>15,593</b>	<b>14,617</b>
<hr/>					
<b>Health Sciences</b>	<b>Fall 2000</b>	<b>Fall 2001</b>	<b>Fall 2002</b>	<b>Fall 2003</b>	<b>Fall 2004</b>
Allied Health Sciences	906	971	1,325	1,654	2,028
Associate Degree Nursing	1,931	1,936	2,370	2,651	2,535
Dental Hygiene	-	-	-	198	390
Diagnostic Medical Imaging-Radiology	760	645	706	746	786
Diagnostic Medical Imaging-Sonography	241	319	341	498	490
Emergency Medical Services Technology	489	530	703	596	600
Health & Kinesiology <sup>3</sup>	2,067	2,107	2,345	2,421	2,460
Medical Coding <sup>4</sup>	-	246	282	228	292
Medical Lab Technology	129	96	134	154	221
Occupational Therapy Assistant	252	131	109	129	111
Pharmacy Technology	228	211	263	279	294
Physical Fitness Technology	121	92	105	124	126
Physical Therapist Assistant	271	226	180	246	297
Surgical Technology	171	152	254	286	399
Vocational Nursing	736	961	929	1,214	1,022
<b>TOTAL</b>	<b>8,302</b>	<b>8,623</b>	<b>10,046</b>	<b>11,424</b>	<b>12,051</b>
<hr/>					
<b>SUBTOTAL FOR WORKFORCE</b>	<b>55,428</b>	<b>57,695</b>	<b>59,093</b>	<b>57,831</b>	<b>57,941</b>
<b>SUBTOTAL FOR ACADEMIC</b>	<b>160,378</b>	<b>169,872</b>	<b>180,214</b>	<b>183,721</b>	<b>185,922</b>
<b>GRAND TOTAL</b>	<b>215,806</b>	<b>227,567</b>	<b>239,307</b>	<b>241,552</b>	<b>243,863</b>

<sup>1</sup> Digital Publishing & Graphics Technology (as Printing & Desktop Publishing) and Visual Communication Design were listed under Applied Technologies, Multimedia, & Public Services prior to Fall 2001.

<sup>2</sup> Data for Digital Publishing & Graphics Technology are included in Visual Communication Design starting Fall 2004.

<sup>3</sup> Health & Kinesiology was listed under Math & Sciences prior to Fall 2001.

<sup>4</sup> Medical Coding began in Fall 2001.

NOTES: Data reflect current organization of the College. Disciplines are included as part of their current dean area for all years.

Source: ACC Computer System - uncertified data as of November 3, 2004

**Contact Hours  
Academic Areas  
Fall 2000 - 2004**

<b>Arts &amp; Humanities</b>	<b>Fall 2000</b>	<b>Fall 2001</b>	<b>Fall 2002</b>	<b>Fall 2003</b>	<b>Fall 2004</b>
Art	95,856	100,352	100,656	102,224	103,696
Creative Writing	4,656	5,136	4,992	6,432	6,768
Dance	6,832	6,752	6,672	9,184	8,880
Drama	13,616	14,656	13,776	14,672	16,176
English as a Second Language	18,752	33,728	35,712	39,744	37,184
French	17,376	18,560	20,032	20,768	19,872
German	7,328	9,232	9,504	9,920	10,256
Humanities	13,296	13,968	14,016	15,072	10,752
Japanese	6,288	8,576	10,880	12,432	11,376
Latin	2,160	1,760	1,760	1,600	1,840
Philosophy	56,208	64,752	62,592	69,552	74,352
Religion	6,336	5,376	5,376	5,904	5,856
Russian	1,680	2,304	1,840	1,920	1,680
Spanish	149,456	157,488	166,768	166,448	172,544
<b>TOTAL</b>	<b>399,840</b>	<b>442,640</b>	<b>454,576</b>	<b>475,872</b>	<b>481,232</b>

<b>Communications</b>	<b>Fall 2000</b>	<b>Fall 2001</b>	<b>Fall 2002</b>	<b>Fall 2003</b>	<b>Fall 2004</b>
English	333,120	338,736	367,056	375,696	381,120
Journalism	7,776	7,632	7,248	9,488	9,952
Reading Skills - Developmental	70,368	69,104	64,384	59,712	58,560
Speech	59,856	74,544	85,968	97,920	103,776
Study Skills	1,904	4,176	2,512	2,784	3,088
Writing Skills - Developmental	44,048	47,248	49,312	46,896	37,888
<b>TOTAL</b>	<b>517,072</b>	<b>541,440</b>	<b>576,480</b>	<b>592,496</b>	<b>594,384</b>

NOTES: Data reflect current organization of the College. Disciplines are included as part of their current dean area for all years.

Source: ACC Computer System - uncertified data as of November 3, 2004

### 3. CREDIT PROGRAMS

#### Contact Hours Academic Areas Fall 2000 - 2004

<b>Math &amp; Sciences</b>	<b>Fall 2000</b>	<b>Fall 2001</b>	<b>Fall 2002</b>	<b>Fall 2003</b>	<b>Fall 2004</b>
Astronomy	12,768	14,304	18,624	17,280	16,704
Biology	191,056	216,880	249,216	285,904	255,888
Biotechnology	2,336	3,056	4,560	5,216	3,472
Chemistry	116,352	120,384	126,528	131,616	139,392
Engineering	2,672	3,136	3,232	3,520	3,440
Environmental Science & Technology <sup>1</sup>	12,480	5,808	5,344	4,432	5,280
Geology	33,728	38,880	40,448	43,680	40,992
Mathematics	301,888	299,664	303,584	289,760	285,232
Mathematics - Developmental	307,904	355,296	378,592	393,184	418,240
Physics	56,288	63,552	69,072	71,712	70,656
<b>TOTAL</b>	<b>1,037,472</b>	<b>1,120,960</b>	<b>1,199,200</b>	<b>1,246,304</b>	<b>1,239,296</b>
<b>Social &amp; Behavioral Sciences</b>	<b>Fall 2000</b>	<b>Fall 2001</b>	<b>Fall 2002</b>	<b>Fall 2003</b>	<b>Fall 2004</b>
Anthropology	26,448	26,640	30,384	30,000	32,592
Economics	86,544	87,984	91,680	85,104	88,224
Geography	17,712	20,448	21,600	25,440	24,096
Government	262,608	272,880	282,048	282,144	281,664
History	266,304	279,120	300,240	300,576	313,680
Human Development	21,056	24,064	27,432	26,448	25,560
Military Science <sup>2</sup>	288	704	592	416	416
Psychology	138,624	135,744	153,552	154,512	161,376
Sociology	62,016	65,376	67,632	63,456	67,200
<b>TOTAL</b>	<b>881,600</b>	<b>912,960</b>	<b>975,160</b>	<b>968,096</b>	<b>994,808</b>
<b>SUBTOTAL FOR ACADEMIC</b>	<b>2,835,984</b>	<b>3,018,000</b>	<b>3,205,416</b>	<b>3,282,768</b>	<b>3,309,720</b>
<b>SUBTOTAL FOR WORKFORCE</b>	<b>1,302,664</b>	<b>1,362,600</b>	<b>1,406,624</b>	<b>1,364,104</b>	<b>1,358,976</b>
<b>GRAND TOTAL</b>	<b>4,138,648</b>	<b>4,380,600</b>	<b>4,612,040</b>	<b>4,646,872</b>	<b>4,668,696</b>

<sup>1</sup> Environmental Science & Technology was listed as Physical Science prior to Fall 2001.

<sup>2</sup> Data for Air Force Science are included in Military Science.

NOTES: Data reflect current organization of the College. Disciplines are included as part of their current dean area for all years.

Source: ACC Computer System - uncertified data as of November 3, 2004

## Contact Hours Workforce Areas Fall 2000 - 2004

### Applied Technologies, Multimedia, & Public Services

	Fall 2000	Fall 2001	Fall 2002	Fall 2003	Fall 2004
Air Conditioning, Heating, & Refrigeration Technology	11,392	12,480	15,200	17,120	19,168
Automotive Technology	15,296	23,104	31,424	35,424	37,152
Building Construction Technology	21,104	23,264	27,552	30,416	30,240
Child Development	43,296	42,208	46,288	50,128	38,208
Commercial Music Management	23,232	24,576	28,944	27,760	27,824
Criminal Justice	25,968	28,032	33,312	32,928	34,144
Fire Protection Technology	16,112	15,696	15,840	17,040	21,888
Human Services	37,488	40,640	44,896	46,432	46,832
Jewelry	-	-	-	11,616	11,904
Legal Assistant <sup>1</sup>	8,928	12,144	15,120	16,080	16,992
Music <sup>2</sup>	26,856	26,584	24,400	23,552	22,736
Photography Technology	50,016	55,296	57,136	55,904	49,456
Radio-TV-Film <sup>2</sup>	18,640	19,024	21,360	20,704	17,200
Welding Technology	22,848	32,160	38,688	32,064	27,648
<b>TOTAL</b>	<b>321,176</b>	<b>355,208</b>	<b>400,160</b>	<b>417,168</b>	<b>401,392</b>

### Business Studies

	Fall 2000	Fall 2001	Fall 2002	Fall 2003	Fall 2004
<b>Accounting</b>	72,192	77,568	81,952	76,960	74,384
Culinary Arts	9,056	12,720	10,384	13,120	17,360
Fashion Merchandising <sup>3</sup>	2,544	-	-	-	-
Financial Management	6,096	10,032	12,144	7,968	8,928
Hospitality Management	2,880	4,064	5,360	4,016	5,568
International Business <sup>4</sup>	-	768	2,496	3,984	4,032
Management <sup>4</sup>	62,768	58,272	59,616	66,816	67,584
Marketing <sup>3</sup>	17,760	22,656	20,976	18,480	22,272
Meeting & Events Planning	-	-	-	3,072	1,344
Office Administration	13,664	15,632	16,912	16,720	17,504
Quality Assurance <sup>5</sup>	1,040	976	2,192	-	320
Real Estate	6,112	15,072	15,616	14,208	20,736
Technical Communications <sup>6</sup>	8,928	6,336	4,128	4,080	5,216
Travel and Tourism	2,544	4,208	2,832	2,112	720
<b>TOTAL</b>	<b>205,584</b>	<b>228,304</b>	<b>234,608</b>	<b>231,536</b>	<b>245,968</b>

<sup>1</sup> Legal Assistant was listed under Business Studies prior to Fall 2001.

<sup>2</sup> Music and Radio-TV-Film were listed under Arts & Humanities prior to Fall 2001.

<sup>3</sup> Data for Fashion Merchandising were included in Marketing effective Fall 2001.

<sup>4</sup> Data for International Business were included in Management prior to Fall 2001.

<sup>5</sup> Quality Assurance was listed as Quality Management Technology under Computer Studies & Advanced Tech. prior to Fall 2001.

<sup>6</sup> Technical Communications was listed under Applied Technologies, Multimedia, & Public Services prior to Fall 2001.

NOTES: Data reflect current organization of the College. Disciplines are included as part of their current dean area for all years.

Source: ACC Computer System - uncertified data as of November 3, 2004



### 3. CREDIT PROGRAMS

#### Contact Hours Workforce Areas Fall 2000 - 2004

<b>Computer Studies &amp; Advanced Technology</b>	<b>Fall 2000</b>	<b>Fall 2001</b>	<b>Fall 2002</b>	<b>Fall 2003</b>	<b>Fall 2004</b>
Computer Information Technology	119,760	115,616	108,272	84,192	79,200
Computer Science	191,488	174,368	143,104	106,848	103,456
Digital Publishing & Graphics Tech. <sup>1,2</sup>	20,944	20,512	17,600	4,960	-
Electronics	53,184	48,816	39,296	29,312	22,192
Engineering Design Graphics	44,352	47,616	46,656	41,328	37,248
Geomatics/Land Surveying Technology	3,600	1,936	2,496	2,352	2,832
Visual Communication Design <sup>1</sup>	80,928	87,888	91,504	89,264	92,176
<b>TOTAL</b>	<b>514,256</b>	<b>496,752</b>	<b>448,928</b>	<b>358,256</b>	<b>337,104</b>
<b>Health Sciences</b>	<b>Fall 2000</b>	<b>Fall 2001</b>	<b>Fall 2002</b>	<b>Fall 2003</b>	<b>Fall 2004</b>
Allied Health Sciences	14,496	15,536	21,200	26,464	32,448
Associate Degree Nursing	61,504	69,056	82,976	92,944	87,440
Dental Hygiene	-	-	-	6,336	12,736
Diagnostic Medical Imaging-Radiology	20,912	19,120	24,272	22,272	25,120
Diagnostic Medical Imaging-Sonography	9,024	12,496	11,424	19,328	16,512
Emergency Medical Services Technology	16,000	18,832	24,912	21,008	22,256
Health & Kinesiology <sup>3</sup>	83,488	84,240	89,328	90,840	91,488
Medical Coding <sup>4</sup>	-	4,896	6,912	5,344	6,864
Medical Lab Technology	5,920	4,560	5,440	6,016	8,544
Occupational Therapy Assistant	6,720	4,400	3,616	4,176	3,744
Pharmacy Technology	7,072	6,176	6,592	7,104	8,560
Physical Fitness Technology	2,400	1,728	1,968	2,400	2,400
Physical Therapist Assistant	9,168	8,416	7,600	8,320	11,424
Surgical Technology	4,864	4,288	7,760	8,848	12,976
Vocational Nursing	20,080	28,592	28,928	35,744	32,000
<b>TOTAL</b>	<b>261,648</b>	<b>282,336</b>	<b>322,928</b>	<b>357,144</b>	<b>374,512</b>
<b>SUBTOTAL FOR WORKFORCE</b>	<b>1,302,664</b>	<b>1,362,600</b>	<b>1,406,624</b>	<b>1,364,104</b>	<b>1,358,976</b>
<b>SUBTOTAL FOR ACADEMIC</b>	<b>2,835,984</b>	<b>3,018,000</b>	<b>3,205,416</b>	<b>3,282,768</b>	<b>3,309,720</b>
<b>GRAND TOTAL</b>	<b>4,138,648</b>	<b>4,380,600</b>	<b>4,612,040</b>	<b>4,646,872</b>	<b>4,668,696</b>

<sup>1</sup> Digital Publishing & Graphics Technology (as Printing & Desktop Publishing) and Visual Communication Design were listed under Applied Technologies, Multimedia, & Public Services prior to Fall 2001.

<sup>2</sup> Data for Digital Publishing & Graphics Technology are included in Visual Communication Design starting Fall 2004.

<sup>3</sup> Health & Kinesiology was listed under Math & Sciences prior to Fall 2001.

<sup>4</sup> Medical Coding began in Fall 2001.

NOTES: Data reflect current organization of the College. Disciplines are included as part of their current dean area for all years.

Source: ACC Computer System - uncertified data as of November 3, 2004