

**Student Characteristics
District-wide
Fall 2003 - 2007**

	Fall 2003	Fall 2004	Fall 2005	Fall 2006	Fall 2007	03-07 % chg
Student Headcount	30,203	30,439	31,908	33,039	33,508	10.94%
Credit Hours	239,234	240,957	253,569	262,355	267,284	11.72%
Average Credit Hours	7.92	7.92	7.90	7.90	8.00	1.00%
Contact Hours	4,609,320	4,615,496	4,832,704	5,016,656	5,123,072	11.15%
Average Contact Hours	152.61	151.63	151.50	151.80	152.90	0.19%
Full-time Student Equivalent (FTSE)¹	15,949	16,064	16,905	17,490	17,819	11.72%
Residency						
In-District	20,399 67.54%	21,177 69.57%	23,266 72.92%	23,533 71.23%	23,542 70.26%	15.41%
Out-of-District	8,834 29.25%	8,358 27.46%	7,719 24.19%	8,502 25.73%	9,081 27.10%	2.80%
Out-of-State/International	453 1.50%	527 1.73%	575 1.80%	689 2.09%	573 1.71%	26.49%
Other/Unknown ²	517 1.71%	377 1.24%	348 1.09%	315 0.95%	312 0.93%	-39.65%
Gender						
Male	13,186 43.66%	13,293 43.67%	13,831 43.35%	14,498 43.88%	14,434 43.08%	9.46%
Female	17,017 56.34%	17,146 56.33%	18,077 56.65%	18,541 56.12%	19,074 56.92%	12.09%
Student Status						
Part-time	21,962 72.71%	22,074 72.52%	23,063 72.28%	23,821 72.10%	24,276 72.45%	10.54%
Full-time ³	8,241 27.29%	8,154 26.79%	8,818 27.64%	9,218 27.90%	9,232 27.55%	12.03%
Ethnicity						
White	18,292 60.56%	18,380 60.38%	19,097 59.85%	19,467 58.92%	19,810 59.12%	8.30%
Hispanic	6,596 21.84%	6,822 22.41%	7,456 23.37%	8,014 24.26%	7,897 23.57%	19.72%
Black	2,133 7.06%	2,194 7.21%	2,383 7.47%	2,557 7.74%	2,689 8.02%	26.07%
Asian/Pacific Islander	1,603 5.31%	1,600 5.26%	1,596 5.00%	1,598 4.84%	1,780 5.31%	11.04%
Am. Indian/Alaskan Native	263 0.87%	237 0.78%	231 0.72%	294 0.89%	293 0.87%	11.41%
Non-Resident Alien	731 2.42%	694 2.28%	652 2.04%	661 2.00%	558 1.67%	-23.67%
Other/Unknown	585 1.94%	512 1.68%	493 1.55%	448 1.36%	481 1.44%	-17.78%
Age						
16 and Under	399 1.32%	485 1.59%	620 1.94%	844 2.55%	859 2.56%	115.29%
17	1,102 3.65%	1,118 3.67%	1,382 4.33%	1,415 4.28%	1,655 4.94%	50.18%
18	2,510 8.31%	2,557 8.40%	2,840 8.90%	3,104 9.39%	3,197 9.54%	27.37%
19-21	9,097 30.12%	9,005 29.58%	9,300 29.15%	9,586 29.01%	9,809 29.27%	7.83%
22-24	5,212 17.26%	5,306 17.43%	5,428 17.01%	5,370 16.25%	5,273 15.74%	1.17%
25-30	5,365 17.76%	5,485 18.02%	5,636 17.66%	5,907 17.88%	5,861 17.49%	9.25%
31-35	2,533 8.39%	2,516 8.27%	2,518 7.89%	2,533 7.67%	2,489 7.43%	-1.74%
36-50	3,353 11.10%	3,285 10.79%	3,444 10.79%	3,501 10.60%	3,558 10.62%	6.11%
51-64	575 1.90%	627 2.06%	673 2.11%	703 2.13%	715 2.13%	24.35%
65 and Over	57 0.19%	55 0.18%	67 0.21%	76 0.23%	85 0.25%	49.12%
Unknown	0 0.00%	0 0.00%	0 0.00%	0 0.00%	7 0.02%	.
Average Age	25.70	25.60	25.50	25.40	25.30	-1.56%

¹ Full-time Student Equivalent (FTSE) is based on 15 SCH. Fact Books prior to Fall 2004 calculated FTSE based on 12 SCH. To standardize reporting with that of the THECB, calculations are now based on 15 SCH.

² Other includes students with tuition exemptions and waivers.

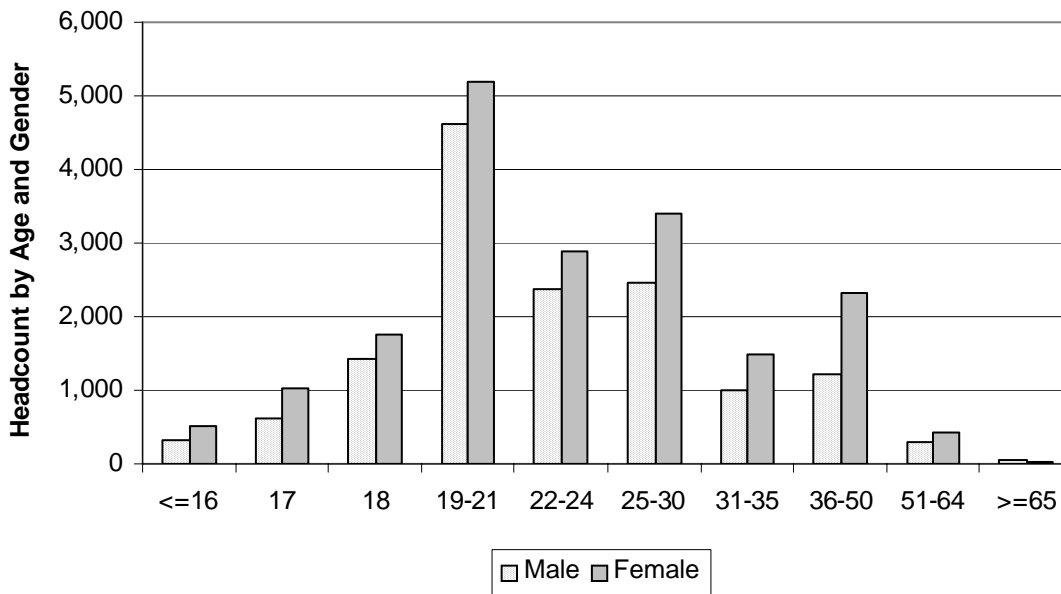
³ Full-time - 12 credit hours or more.

NOTE: Percents may not add to 100 due to rounding.

Source: Fall 12th Class Day Data

Student Characteristics Headcount by Age and Gender Fall 2007

Age	Male		Female		Total	
16 and Under	335	2.32%	524	2.75%	859	2.56%
17	635	4.40%	1,020	5.35%	1,655	4.94%
18	1,436	9.95%	1,761	9.23%	3,197	9.54%
19-21	4,619	32.00%	5,190	27.21%	9,809	29.27%
22-24	2,378	16.47%	2,895	15.18%	5,273	15.74%
25-30	2,467	17.09%	3,394	17.79%	5,861	17.49%
31-35	1,005	6.96%	1,484	7.78%	2,489	7.43%
36-50	1,222	8.47%	2,336	12.25%	3,558	10.62%
51-64	288	2.00%	427	2.24%	715	2.13%
65 and Over	45	0.31%	40	0.21%	85	0.25%
Unknown	4	0.03%	3	0.02%	7	0.02%
TOTAL	14,434	100.00%	19,074	100.00%	33,508	100.00%

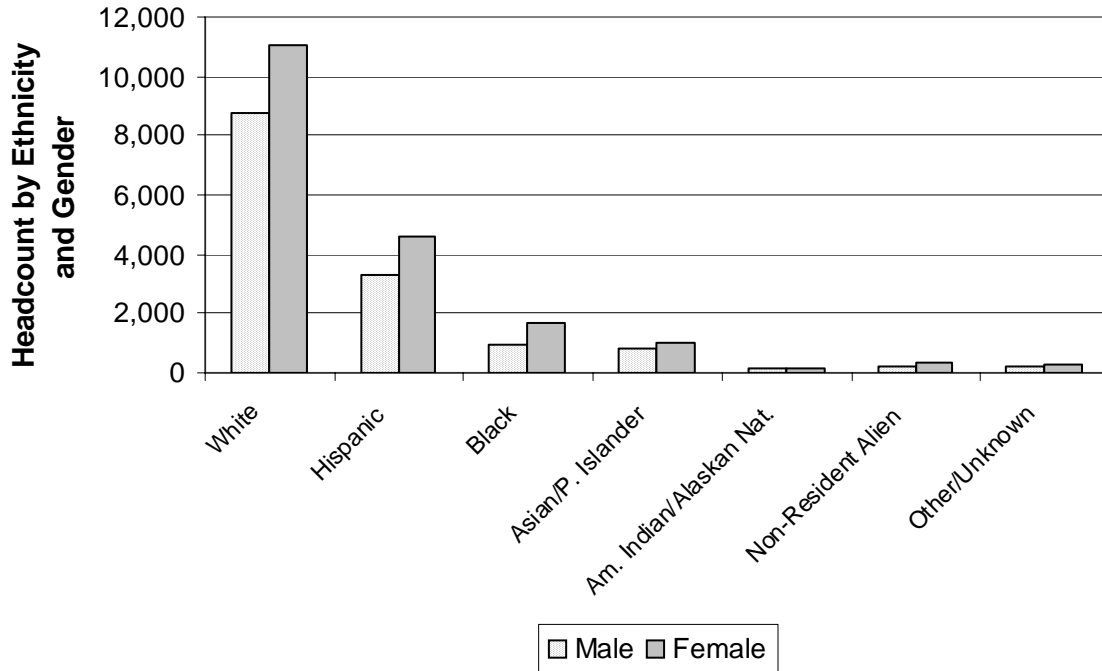


NOTE: Percents may not add to 100 due to rounding.

Source: Fall 12th Class Day Data

**Student Characteristics
Headcount by Ethnicity and Gender
Fall 2007**

Ethnicity	Male		Female		Total	
White	8,755	60.66%	11,055	57.96%	19,810	59.12%
Hispanic	3,333	23.09%	4,564	23.93%	7,897	23.57%
Black	973	6.74%	1,716	9.00%	2,689	8.02%
Asian/Pacific Islander	797	5.52%	983	5.15%	1,780	5.31%
Am. Indian/Alaskan Native	153	1.06%	140	0.73%	293	0.87%
Non-Resident Alien	230	1.59%	328	1.72%	558	1.67%
Other/Unknown	193	1.34%	288	1.51%	481	1.44%
TOTAL	14,434	100.00%	19,074	100.00%	33,508	100.00%



NOTE: Percents may not add to 100 due to rounding.

Source: Fall 12th Class Day Data

**Student Characteristics
Headcount by Gender and Full/Part-time Status
Fall 2007**

Gender	Full-time		Part-time		Total	
Male	4,562	49.42%	9,872	40.67%	14,434	43.08%
Female	4,670	50.58%	14,404	59.33%	19,074	56.92%
TOTAL	9,232	100.00%	24,276	100.00%	33,508	100.00%

**Student Characteristics
Headcount by Ethnicity and Full/Part-time Status
Fall 2007**

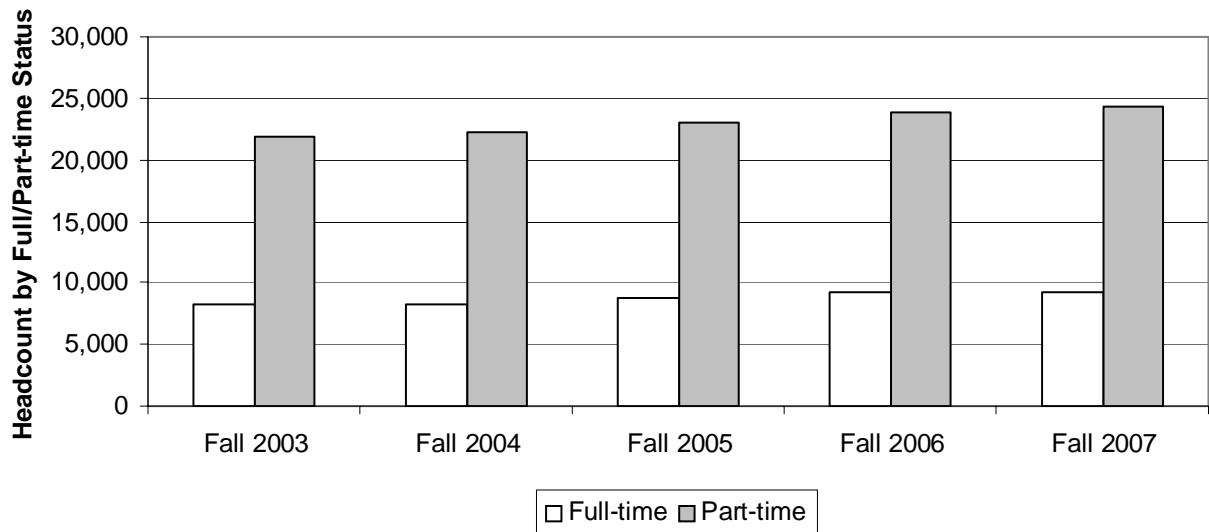
Ethnicity	Full-time		Part-time		Total	
White	5,753	62.32%	14,057	57.90%	19,810	59.12%
Hispanic	1,945	21.07%	5,952	24.52%	7,897	23.57%
Black	591	6.40%	2,098	8.64%	2,689	8.02%
Asian/Pacific Islander	508	5.50%	1,272	5.24%	1,780	5.31%
Am. Indian/Alaskan Native	87	0.94%	206	0.85%	293	0.87%
Non-Resident Alien	238	2.58%	320	1.32%	558	1.67%
Other/Unknown	110	1.19%	371	1.53%	481	1.44%
TOTAL	9,232	100.00%	24,276	100.00%	33,508	100.00%

NOTE: Percents may not add to 100 due to rounding.

Source: Fall 12th Class Day Data

**Student Characteristics
Headcount by Full/Part-time Status
Fall 2003 - 2007**

	Fall 2003	Fall 2004	Fall 2005	Fall 2006	Fall 2007	03-07 % chg
FULL-TIME STUDENTS¹						
Headcount	8,241	8,247	8,829	9,218	9,232	12.03%
% of Total	27.29%	27.09%	27.67%	27.90%	27.55%	
Average Hours Attempted	13.10	13.10	13.00	13.00	13.06	-0.31%
PART-TIME STUDENTS²						
Headcount	21,962	22,192	23,079	23,821	24,276	10.54%
% of Total	72.71%	72.91%	72.33%	72.10%	72.45%	
Average Hours Attempted	6.00	6.00	6.00	6.00	6.05	0.83%
TOTAL HEADCOUNT	30,203	30,439	31,908	33,039	33,508	10.94%



¹ Full-time students are those enrolled in 12 or more semester credit hours

² Part-time students are those enrolled in less than 12 semester credit hours.

NOTE: Percents may not add to 100 due to rounding.

Source: Fall 12th Class Day Data

**Student Characteristics
Headcount by Day/Evening Classification
Fall 2003 - 2007**

Classification	Fall 2003	Fall 2004	Fall 2005	Fall 2006	Fall 2007	03-07 %chg
Day	14,241	14,229	15,367	15,927	16,089	12.98%
% of Total	47.15%	46.75%	48.16%	48.21%	48.02%	
Evening	4,676	4,407	4,529	4,640	4,319	-7.63%
% of Total	15.48%	14.48%	14.19%	14.04%	12.89%	
Telecommunicated	2,207	2,360	2,518	2,569	2,926	32.58%
% of Total	7.31%	7.75%	7.89%	7.78%	8.73%	
Day & Evening	5,608	5,713	5,790	6,023	6,155	9.75%
% of Total	18.57%	18.77%	18.15%	18.23%	18.37%	
Day & Telecommunicated	1,856	1,992	2,027	2,211	2,232	20.26%
% of Total	6.15%	6.54%	6.35%	6.69%	6.66%	
Evening & Telecommunicated	844	874	820	866	953	12.91%
% of Total	2.79%	2.87%	2.57%	2.62%	2.84%	
Day & Evening & Telecommunicated	672	739	686	700	761	13.24%
% of Total	2.22%	2.43%	2.15%	2.12%	2.27%	
Non-identifiable	99	125	171	103	73	-26.26%
% of Total	0.33%	0.41%	0.54%	0.31%	0.22%	
Total	30,203	30,439	31,908	33,039	33,508	10.94%

NOTES: Classifications are mutually exclusive. Day students are enrolled in courses that begin before 5:30 PM and evening students are enrolled in courses that begin at or after 5:30 PM. The "Non-identifiable" category includes self-paced courses and courses without designated meeting times. Percents may not add to 100 due to rounding.

Source: Fall 12th Class Day Data

**Headcount by Region and Zip Code
Fall 2003 - 2007**

Region	Zip Code	Fall 2003	Fall 2004	Fall 2005	Fall 2006	Fall 2007	03-07 % chg
Austin, Central							
Austin	78701	122	112	140	127	109	-10.66%
Austin	78703	384	404	389	369	342	-10.94%
Austin	78705	1,002	1,014	940	918	949	-5.29%
Austin	78712	0	0	1	0	1	.
Austin	78751	489	501	507	515	480	-1.84%
Austin	78752	432	370	338	349	329	-23.84%
Austin	78756	236	190	170	190	193	-18.22%
Austin	78757	598	587	588	556	522	-12.71%
Total		3,263	3,178	3,073	3,024	2,925	-10.36%
% of Grand Total		10.80%	10.44%	9.63%	9.15%	8.73%	
Austin, East							
Austin	78702	439	447	479	460	480	9.34%
Austin	78721	185	184	198	182	194	4.86%
Austin	78722	181	186	198	185	187	3.31%
Austin	78723	614	618	557	533	507	-17.43%
Total		1,419	1,435	1,432	1,360	1,368	-3.59%
% of Grand Total		4.70%	4.71%	4.49%	4.12%	4.08%	
Austin, North							
Austin	78727	695	676	686	763	751	8.06%
Austin	78728	329	308	336	327	337	2.43%
Austin	78758	1,524	1,469	1,456	1,381	1,444	-5.25%
Total		2,548	2,453	2,478	2,471	2,532	-0.63%
% of Grand Total		8.44%	8.06%	7.77%	7.48%	7.56%	
Austin, Northwest							
Austin	78726	260	323	325	312	304	16.92%
Austin	78730	101	110	102	120	98	-2.97%
Austin	78731	560	507	541	501	503	-10.18%
Austin	78750	424	382	414	439	463	9.20%
Austin	78759	1,142	1,019	1,046	930	975	-14.62%
Total		2,487	2,341	2,428	2,302	2,343	-5.79%
% of Grand Total		8.23%	7.69%	7.61%	6.97%	6.99%	

NOTES: Headcount based on zip code data as reported and entered in the ACC database. Zip code regions are based on definitions developed by ACC administration.

Source: Fall 12th Class Day Data

**Headcount by Region and Zip Code (continued)
Fall 2003 - 2007**

Region	Zip Code	Fall 2003	Fall 2004	Fall 2005	Fall 2006	Fall 2007	03-07 % chg
Austin/Travis County, South							
Manchaca	78652	93	100	97	115	88	-5.38%
Austin	78704	1,275	1,302	1,317	1,237	1,134	-11.06%
Austin	78745	1,683	1,743	1,722	1,791	1,756	4.34%
Austin	78748	1,036	1,045	1,045	1,121	1166	12.55%
Total		4,087	4,190	4,181	4,264	4,144	1.39%
% of Grand Total		13.53%	13.77%	13.10%	12.91%	12.37%	
Austin/Travis County, Southeast							
Del Valle	78617	98	153	205	264	265	170.41%
Austin	78719	19	27	27	26	30	57.89%
Austin	78741	1,388	1,702	2,010	2,114	2,006	44.52%
Austin	78742	5	12	15	14	18	260.00%
Austin	78744	681	721	838	883	869	27.61%
Austin	78747	162	217	207	225	259	59.88%
Total		2,353	2,832	3,302	3,526	3,447	46.49%
% of Grand Total		7.79%	9.30%	10.35%	10.67%	10.29%	
Austin/Travis County, Southwest							
Austin	78735	245	271	265	259	257	4.90%
Austin	78736	235	218	218	234	240	2.13%
Austin	78739	213	241	280	296	328	53.99%
Austin	78746	353	309	317	353	355	0.57%
Austin	78749	1,116	1,120	1,086	1,044	1,064	-4.66%
Total		2,162	2,159	2,166	2,186	2,244	3.79%
% of Grand Total		7.16%	7.09%	6.79%	6.62%	6.70%	

NOTES: Headcount based on zip code data as reported and entered in the ACC database. Zip code regions are based on definitions developed by ACC administration.

Source: Fall 12th Class Day Data

Headcount by Region and Zip Code (continued)
Fall 2003 - 2007

Region	Zip Code	Fall 2003	Fall 2004	Fall 2005	Fall 2006	Fall 2007	03-07 % chg
Bastrop County¹							
Bastrop	78602	161	153	170	179	225	39.75%
Cedar Creek	78612	62	81	80	93	110	77.42%
Elgin	78621	154	136	146	168	183	18.83%
McDade	78650	11	9	9	14	8	-27.27%
Paige	78659	14	15	14	25	17	21.43%
Red Rock	78662	10	14	31	27	23	130.00%
Rosanky	78953	6	6	6	7	7	16.67%
Smithville	78957	39	53	46	50	65	66.67%
Total		457	467	502	563	638	39.61%
% of Grand Total		1.51%	1.53%	1.57%	1.70%	1.90%	
Blanco County¹							
Blanco	78606	15	16	35	36	28	86.67%
Hye	78635	2	2	2	3	0	.
Johnson City	78636	20	26	29	33	38	90.00%
Round Mountain	78663	1	5	3	8	9	800.00%
Total		38	49	69	80	75	97.37%
% of Grand Total		0.13%	0.16%	0.22%	0.24%	0.22%	
Burnet County¹							
Bertram	78605	13	9	14	11	17	30.77%
Briggs	78608	1	0	0	0	2	100.00%
Burnet	78611	22	24	29	22	21	-4.55%
Marble Falls	78654	59	45	30	42	36	-38.98%
Total		95	78	73	75	76	-20.00%
% of Grand Total		0.31%	0.26%	0.23%	0.23%	0.23%	

¹ These numbers do not represent total enrollment for the county due to zip codes that span more than one county.

NOTES: Headcount based on zip code data as reported and entered in the ACC database. Zip code regions are based on definitions developed by ACC administration.

Source: Fall 12th Class Day Data

**Headcount by Region and Zip Code (continued)
Fall 2003 - 2007**

Region	Zip Code	Fall 2003	Fall 2004	Fall 2005	Fall 2006	Fall 2007	03-07 % chg
Caldwell County¹							
Dale	78616	42	42	54	54	72	71.43%
Lockhart	78644	142	156	186	227	215	51.41%
Luling	78648	37	42	59	39	55	48.65%
Martindale	78655	32	30	26	34	24	-25.00%
Maxwell	78656	14	21	26	27	22	57.14%
Total		267	291	351	381	388	45.32%
% of Grand Total		0.88%	0.96%	1.10%	1.15%	1.16%	
Cedar Park/Leander							
Cedar Park	78613	1,231	1,264	1,480	1,466	1,602	30.14%
Leander	78641	748	795	884	874	981	31.15%
Liberty Hill	78642	75	87	115	133	142	89.33%
Total		2,054	2,146	2,479	2,473	2,725	32.67%
% of Grand Total		6.80%	7.05%	7.77%	7.49%	8.13%	
Georgetown/North Williamson County							
Florence	76527	16	9	6	15	18	12.50%
Granger	76530	5	5	3	8	9	80.00%
Jarrell	76537	19	19	45	43	41	115.79%
Georgetown	78626	181	167	204	226	221	22.10%
Georgetown	78628	344	315	346	369	406	18.02%
Total		565	515	604	661	695	23.01%
% of Grand Total		1.87%	1.69%	1.89%	2.00%	2.07%	
Gillespie County¹							
Doss	78618	1	2	4	2	5	400.00%
Fredericksburg	78624	148	140	113	120	110	-25.68%
Harper	78631	15	33	32	34	31	106.67%
Stonewall	78671	5	3	2	3	0	.
Willow City	78675	1	1	1	0	1	0.00%
Total		170	179	152	159	147	-13.53%
% of Grand Total		0.56%	0.59%	0.48%	0.48%	0.44%	

¹ These numbers do not represent total enrollment for the county due to zip codes that span more than one county.

NOTES: Headcount based on zip code data as reported and entered in the ACC database. Zip code regions are based on definitions developed by ACC administration.

Source: Fall 12th Class Day Data

Headcount by Region and Zip Code (continued) Fall 2003 - 2007

Region	Zip Code	Fall 2003	Fall 2004	Fall 2005	Fall 2006	Fall 2007	03-07 % chg
Gonzales County							
Leesville	78122	0	1	1	1	3	.
Nixon	78140	13	11	13	12	22	69.23%
Smiley	78159	5	2	3	6	5	0.00%
Cost	78614	2	3	4	3	1	-50.00%
Gonzales	78629	22	15	21	16	14	-36.36%
Total		42	32	42	38	45	7.14%
% of Grand Total		0.14%	0.11%	0.13%	0.12%	0.13%	
Hays County¹							
Buda	78610	190	194	205	223	254	33.68%
Driftwood	78619	12	18	21	19	21	75.00%
Dripping Springs	78620	136	147	160	136	157	15.44%
Kyle	78640	223	207	277	323	394	76.68%
San Marcos	78666	582	608	584	648	699	20.10%
Wimberley	78676	105	109	127	123	190	80.95%
Austin	78737	135	151	185	175	169	25.19%
Total		1,383	1,434	1,559	1,647	1,884	36.23%
% of Grand Total		4.58%	4.71%	4.89%	4.99%	5.62%	
Manor/East Travis County							
Manor	78653	156	193	227	258	309	98.08%
Austin	78724	210	226	226	225	246	17.14%
Austin	78725	55	65	89	105	115	109.09%
Total		421	484	542	588	670	59.14%
% of Grand Total		1.39%	1.59%	1.70%	1.78%	2.00%	
Pflugerville/Northeast Travis County							
Pflugerville	78660	620	619	678	778	873	40.81%
Austin	78753	954	930	996	1,003	1,008	5.66%
Austin	78754	179	230	260	287	317	77.09%
Total		1,753	1,779	1,934	2,068	2,198	25.39%
% of Grand Total		5.80%	5.84%	6.06%	6.26%	6.56%	

¹ These numbers do not represent total enrollment for the county due to zip codes that span more than one county.

NOTES: Headcount based on zip code data as reported and entered in the ACC database. Zip code regions are based on definitions developed by ACC administration.

Source: Fall 12th Class Day Data

**Headcount by Region and Zip Code (continued)
Fall 2003 - 2007**

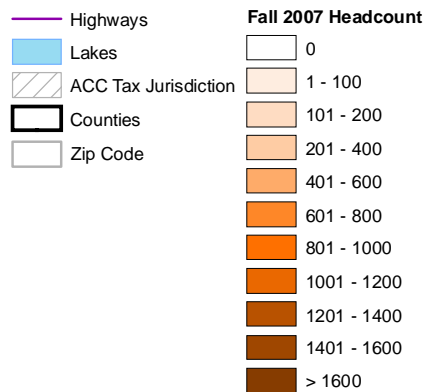
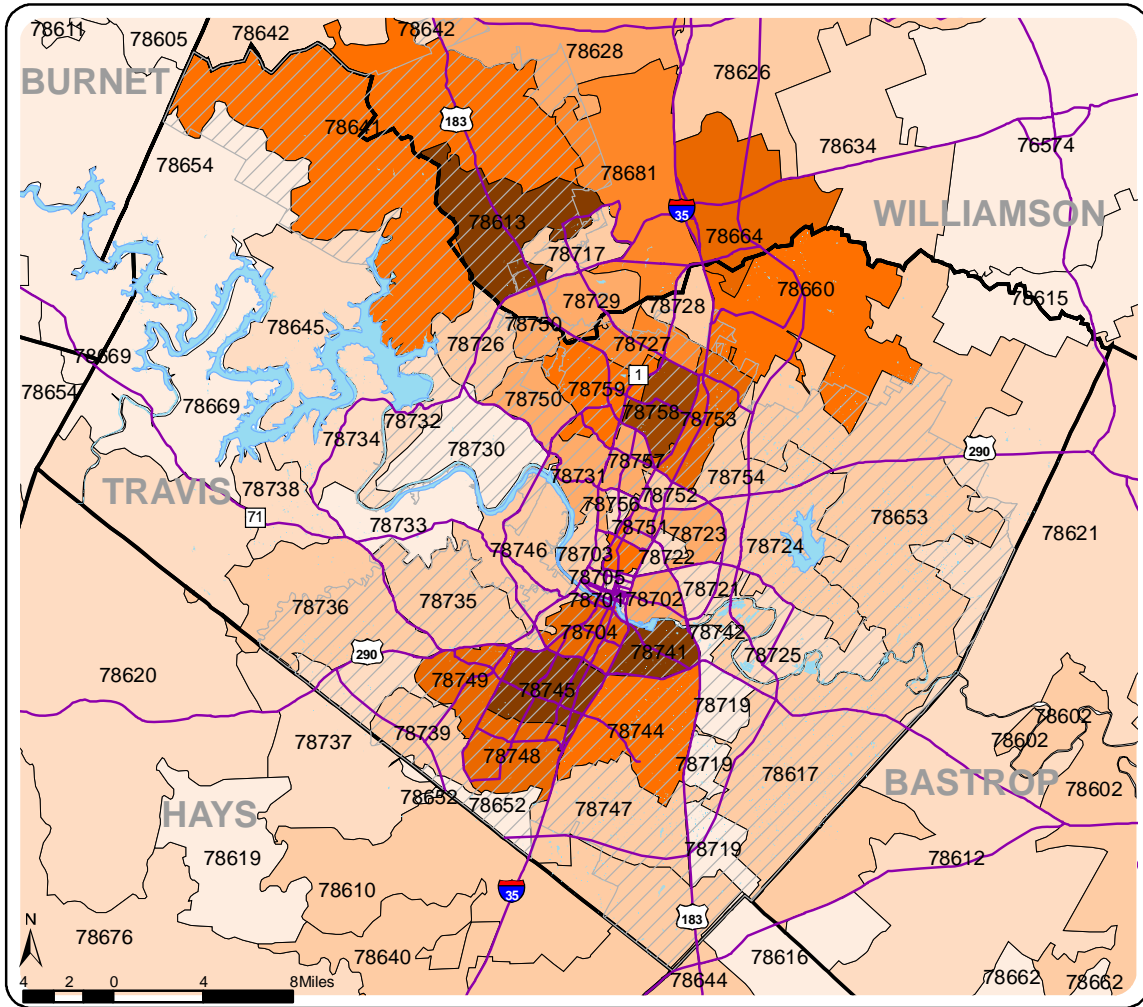
Region	Zip Code	Fall 2003	Fall 2004	Fall 2005	Fall 2006	Fall 2007	03-07 % chg
Round Rock							
Round Rock	78664	675	778	888	952	1013	50.07%
Round Rock	78681	529	565	544	584	603	13.99%
Austin	78717	189	231	278	358	357	88.89%
Austin	78729	427	434	497	474	544	27.40%
Total		1,820	2,008	2,207	2,368	2,517	38.30%
% of Grand Total		6.03%	6.60%	6.92%	7.17%	7.51%	
Taylor/Hutto/East Williamson County							
Taylor	76574	43	40	33	26	36	-16.28%
Thrall	76578	3	0	3	3	2	-33.33%
Coupland	78615	10	9	3	5	5	-50.00%
Hutto	78634	75	87	93	118	171	128.00%
Total		131	136	132	152	214	63.36%
% of Grand Total		0.43%	0.45%	0.41%	0.46%	0.64%	
West Travis County							
Leander	78645	99	126	121	147	144	45.45%
Spicewood	78669	58	64	41	60	53	-8.62%
Austin	78732	79	83	105	114	148	87.34%
Austin	78733	88	86	79	77	81	-7.95%
Austin	78734	173	201	191	201	181	4.62%
Austin	78738	73	107	87	93	109	49.32%
Total		570	667	624	692	716	25.61%
% of Grand Total		1.89%	2.19%	1.96%	2.09%	2.14%	
Other/Unknown		2,118	1,586	1,578	1,961	1,517	-28.38%
Total		2,118	1,586	1,578	1,961	1,517	-28.38%
% of Grand Total		7.01%	5.21%	4.95%	5.94%	4.53%	
GRAND TOTAL		30,203	30,439	31,908	33,039	33,508	10.94%

NOTES: Headcount based on zip code data as reported and entered in the ACC database. Zip code regions are based on definitions developed by ACC administration.

Source: Fall 12th Class Day Data

Austin Community College Headcount by Zip Code Map Fall 2007

The shaded areas represent the zip code boundaries for data shown on the previous pages.



NOTE: Headcount based on zip code data as reported and entered in the ACC database.

Source: Fall 12th Class Day Data

**Headcount by Zip Code
Fall 2003 - 2007**

Zip Code	Region	Fall 2003	Fall 2004	Fall 2005	Fall 2006	Fall 2007	03-07 % chg
76527	Florence	16	9	6	15	18	12.50%
76530	Granger	5	5	3	8	9	80.00%
76537	Jarrell	19	19	45	43	41	115.79%
76574	Taylor	43	40	33	26	36	-16.28%
76578	Thrall	3	0	3	3	2	-33.33%
78122	Leesville	0	1	1	1	3	.
78140	Nixon	13	11	13	12	22	69.23%
78159	Smiley	5	2	3	6	5	0.00%
78602	Bastrop	161	153	170	179	225	39.75%
78605	Bertram	13	9	14	11	17	30.77%
78606	Blanco	15	16	35	36	28	86.67%
78608	Briggs	1	0	0	0	2	100.00%
78610	Buda	190	194	205	223	254	33.68%
78611	Burnet	22	24	29	22	21	-4.55%
78612	Cedar Creek	62	81	80	93	110	77.42%
78613	Cedar Park	1,231	1,264	1,480	1,466	1,602	30.14%
78614	Cost	2	3	4	3	1	-50.00%
78615	Coupland	10	9	3	5	5	-50.00%
78616	Dale	42	42	54	54	72	71.43%
78617	Del Valle	98	153	205	264	265	170.41%
78618	Doss	1	2	4	2	5	400.00%
78619	Driftwood	12	18	21	19	21	75.00%
78620	Dripping Springs	136	147	160	136	157	15.44%
78621	Elgin	154	136	146	168	183	18.83%
78624	Fredericksburg	148	140	113	120	110	-25.68%
78626	Georgetown	181	167	204	226	221	22.10%
78628	Georgetown	344	315	346	369	406	18.02%
78629	Gonzales	22	15	21	16	14	-36.36%
78631	Harper	15	33	32	34	31	106.67%
78634	Hutto	75	87	93	118	171	128.00%
78635	Hye	2	2	2	3	0	.
78636	Johnson City	20	26	29	33	38	90.00%
78640	Kyle	223	207	277	323	394	76.68%
78641	Leander	748	795	884	874	981	31.15%
78642	Liberty Hill	75	87	115	133	142	89.33%
78644	Lockhart	142	156	186	227	215	51.41%
78645	Leander	99	126	121	147	144	45.45%
78648	Luling	37	42	59	39	55	48.65%
78650	McDade	11	9	9	14	8	-27.27%

¹ These numbers do not represent total enrollment for the county due to zip codes that span more than one county.

NOTES: Headcount based on zip code data as reported and entered in the ACC database. Zip code regions are based on definitions developed by ACC administration.

Source: Fall 12th Class Day Data

Headcount by Zip Code (continued) Fall 2003 - 2007

Zip Code	Region	Fall 2003	Fall 2004	Fall 2005	Fall 2006	Fall 2007	03-07 % chg
78652	Manchaca	93	100	97	115	88	-5.38%
78653	Manor	156	193	227	258	309	98.08%
78654	Marble Falls	59	45	30	42	36	-38.98%
78655	Martindale	32	30	26	34	24	-25.00%
78656	Maxwell	14	21	26	27	22	57.14%
78659	Paige	14	15	14	25	17	21.43%
78660	Pflugerville	620	619	678	778	873	40.81%
78662	Red Rock	10	14	31	27	23	130.00%
78663	Round Mountain	1	5	3	8	9	800.00%
78664	Round Rock	675	778	888	952	1013	50.07%
78666	San Marcos	582	608	584	648	699	20.10%
78669	Spicewood	58	64	41	60	53	-8.62%
78671	Stonewall	5	3	2	3	0	.
78675	Willow City	1	1	1	0	1	0.00%
78676	Wimberley	105	109	127	123	190	80.95%
78681	Round Rock	529	565	544	584	603	13.99%
78701	Austin	122	112	140	127	109	-10.66%
78702	Austin	439	447	479	460	480	9.34%
78703	Austin	384	404	389	369	342	-10.94%
78704	Austin	1,275	1,302	1,317	1,237	1,134	-11.06%
78705	Austin	1,002	1,014	940	918	949	-5.29%
78712	Austin	0	0	1	0	1	.
78717	Austin	189	231	278	358	357	88.89%
78719	Austin	19	27	27	26	30	57.89%
78721	Austin	185	184	198	182	194	4.86%
78722	Austin	181	186	198	185	187	3.31%
78723	Austin	614	618	557	533	507	-17.43%
78724	Austin	210	226	226	225	246	17.14%
78725	Austin	55	65	89	105	115	109.09%
78726	Austin	260	323	325	312	304	16.92%
78727	Austin	695	676	686	763	751	8.06%
78728	Austin	329	308	336	327	337	2.43%
78729	Austin	427	434	497	474	544	27.40%
78730	Austin	101	110	102	120	98	-2.97%
78731	Austin	560	507	541	501	503	-10.18%
78732	Austin	79	83	105	114	148	87.34%
78733	Austin	88	86	79	77	81	-7.95%
78734	Austin	173	201	191	201	181	4.62%
78735	Austin	245	271	265	259	257	4.90%

¹ These numbers do not represent total enrollment for the county due to zip codes that span more than one county.

NOTES: Headcount based on zip code data as reported and entered in the ACC database. Zip code regions are based on definitions developed by ACC administration.

Source: Fall 12th Class Day Data

Headcount by Zip Code (continued)
Fall 2003 - 2007

Zip Code	Region	Fall 2003	Fall 2004	Fall 2005	Fall 2006	Fall 2007	03-07 % chg
78736	Austin Austin/Travis County, Southwest	235	218	218	234	240	2.13%
78737	Austin Hays County ¹	135	151	185	175	169	25.19%
78738	Austin West Travis County	73	107	87	93	109	49.32%
78739	Austin Austin/Travis County, Southwest	213	241	280	296	328	53.99%
78741	Austin Austin/Travis County, Southeast	1,388	1,702	2,010	2,114	2,006	44.52%
78742	Austin Austin/Travis County, Southeast	5	12	15	14	18	260.00%
78744	Austin Austin/Travis County, Southeast	681	721	838	883	869	27.61%
78745	Austin Austin/Travis County, South	1,683	1,743	1,722	1,791	1,756	4.34%
78746	Austin Austin/Travis County, Southwest	353	309	317	353	355	0.57%
78747	Austin Austin/Travis County, Southeast	162	217	207	225	259	59.88%
78748	Austin Austin/Travis County, South	1,036	1,045	1,045	1,121	1,166	12.55%
78749	Austin Austin/Travis County, Southwest	1,116	1,120	1,086	1,044	1,064	-4.66%
78750	Austin, Northwest	424	382	414	439	463	9.20%
78751	Austin, Central	489	501	507	515	480	-1.84%
78752	Austin, Central	432	370	338	349	329	-23.84%
78753	Austin Pflugerville/Northeast Travis County	954	930	996	1,003	1,008	5.66%
78754	Austin Pflugerville/Northeast Travis County	179	230	260	287	317	77.09%
78756	Austin, Central	236	190	170	190	193	-18.22%
78757	Austin, Central	598	587	588	556	522	-12.71%
78758	Austin, North	1,524	1,469	1,456	1,381	1,444	-5.25%
78759	Austin, Northwest	1,142	1,019	1,046	930	975	-14.62%
78953	Rosanky Bastrop County ¹	6	6	6	7	7	16.67%
78957	Smithville Bastrop County ¹	39	53	46	50	65	66.67%
	Other/Unknown	2,118	1,586	1,578	1,961	1,517	-28.38%
	GRAND TOTAL	30,203	30,439	31,908	33,039	33,508	10.94%

¹ These numbers do not represent total enrollment for the county due to zip codes that span more than one county.

NOTES: Headcount based on zip code data as reported and entered in the ACC database. Zip code regions are based on definitions developed by ACC administration.

Source: Fall 12th Class Day Data

**Student Characteristics
Declared Majors
Fall 2007**

Associate of Arts (AA)

	Fall 2006	Fall 2007	06-07 % chg
Anthropology	120	97	-19.17%
Art	527	599	13.66%
Communications ¹	71	75	5.63%
Creative Writing	46	34	-26.09%
Dance	80	75	-6.25%
Drama	122	136	11.48%
Economics	148	127	-14.19%
English	338	346	2.37%
Foreign Lanuage			
French	27	32	18.52%
General	3	4	33.33%
German	18	16	-11.11%
Japanese	33	41	24.24%
Latin	1	1	0.00%
Russian	8	11	37.50%
Spanish	124	131	5.65%
General Studies	2,825	2,625	-7.08%
Early Childhood Education ¹	368	213	-42.12%
Grade 4-8 Certification ¹	80	43	-46.25%
Geography	36	34	-5.56%
Geographic Information Systems	2	11	450.00%
Government	207	197	-4.83%
History	313	273	-12.78%
Journalism	250	268	7.20%
Music	346	414	19.65%
Performing Arts ¹	8	10	25.00%
Philosophy	76	62	-18.42%
Psychology	845	871	3.08%
Radio-Television-Film	403	376	-6.70%
Social Work	206	189	-8.25%
Sociology	118	111	-5.93%
Speech	60	49	-18.33%
Undeclared	669	700	4.63%
TOTAL	8,478	8,171	-3.62%

¹ Programs no longer active, but students already in the pipeline may be allowed to complete the degree plan.

Source: Fall 12th Class Day Data

**Student Characteristics
Declared Majors
Fall 2007**

Associate of Arts in Teaching (AAT)

	Fall 2006	Fall 2007	06-07 % chg
Education			
8-12 Grade Levels	133	254	90.98%
EC-4 & 4-8 Grade Levels	91	179	96.70%
EC-4 Grade Levels - Early Childhood Specialization	193	451	133.68%
TOTAL	417	884	111.99%

Associate of Science (AS)

	Fall 2006	Fall 2007	06-07 % chg
Biology	542	517	-4.61%
Business Administration	1,632	1,592	-2.45%
Chemistry	122	118	-3.28%
Computer Science	585	554	-5.30%
Engineering	677	708	4.58%
Environmental Studies	56	54	-3.57%
General Studies in Science	219	240	9.59%
Geology	67	52	-22.39%
Health & Kinesiology			
Health	228	216	-5.26%
Kinesiology	337	261	-22.55%
Mathematics	140	132	-5.71%
Physical Sciences ¹	11	8	-27.27%
Physics - Astronomy	70	82	17.14%
Pre-Dental	154	141	-8.44%
Pre-Medical	536	665	24.07%
Pre-Pharmacy	222	236	6.31%
Pre-Veterinary	139	123	-11.51%
Undeclared	343	347	1.17%
TOTAL	6,080	6,046	-0.56%

¹ Programs no longer active, but students already in the pipeline may be allowed to complete the degree plan.

Source: Fall 12th Class Day Data

**Student Characteristics
Declared Majors
Fall 2007**

Associate of Applied Science (AAS)

	Fall 2006	Fall 2007	06-07 % chg
Architectural and Engineering Computer Aided Design			
Architectural Specialization	3	57	1800.00%
Electronic Graphics Specialization	.	5	.
Interdisciplinary Specialization	2	6	200.00%
Mechanical Specialization	1	17	1600.00%
Accounting	71	75	5.63%
Accounting Specialist	185	132	-28.65%
Accounting Technician	73	199	172.60%
Professional Accountant ¹	212	90	-57.55%
Automotive Technology	122	122	0.00%
Biotechnology	56	53	-5.36%
Building Construction Technology - Construction Management	62	60	-3.23%
Business & Technical Communication	.	13	.
Business & Government Communications	64	99	54.69%
Technical Communications	83	78	-6.02%
Business Management ¹	5	3	-40.00%
Child Development	173	150	-13.29%
Commercial Art ¹	16	14	-12.50%
Commercial Music Management	192	182	-5.21%
Computer Information Technology	58	56	-3.45%
Computer Programming	259	256	-1.16%
Local Area Network Systems-Network Administration	112	116	3.57%
Microcomputer Application Support	31	25	-19.35%
Microcomputer Applications - User & Desktop Support	.	3	.
Web Programming Specialization	1	10	900.00%
Criminal Justice	6	1	-83.33%
Corrections	166	158	-4.82%
Law Enforcement	405	379	-6.42%
Law Enforcement Advanced Skills ¹	6	4	-33.33%
Culinary Arts	104	115	10.58%
Dental Hygiene	146	198	35.62%
Electronics and Advanced Technology			
Automation,Robotics and Control Technology	19	20	5.26%
Computer Electronics/Telecommunications	26	24	-7.69%
Electronic Technology ¹	1	2	100.00%
Engineering	108	112	3.70%
Power Technology Specialization	2	14	600.00%

¹ Programs no longer active, but students already in the pipeline may be allowed to complete the degree plan.

Source: Fall 12th Class Day Data

**Student Characteristics
Declared Majors
Fall 2007**

Associate of Applied Science (AAS) (continued)

	Fall 2006	Fall 2007	06-07 % chg
Electronics and Advanced Technology (continued)			
Robotics/Instrumentation & Control ¹	.	3	.
Semiconductor Manufacturing Technology Technician	31	24	-22.58%
Technician	70	52	-25.71%
Emergency Medical Services Professions	130	130	0.00%
Tech Prep ¹	2	2	0.00%
Engineering Design Graphics ¹	15	10	-33.33%
Architectural Specialty ¹	223	225	0.90%
Electronic Graphics Specialty ¹	31	21	-32.26%
Interdisciplinary Specialty ¹	8	9	12.50%
Mechanical Specialty ¹	43	32	-25.58%
Environmental Technology	19	21	10.53%
Financial Management and Mortgage Banking	38	27	-28.95%
Fire Protection Technology	74	62	-16.22%
Heating, Air Conditioning, & Refrigeration Technology	40	49	22.50%
Hospitality Management	1	.	.
Baccalaureate Prep Specialization	9	8	-11.11%
Food & Lodging Specialization	13	8	-38.46%
Hotel & Lodging Specialization	22	13	-40.91%
Hotel Specialization ¹	.	3	.
Meeting and Event Planning Specialization	23	22	-4.35%
Restaurant Specialization ¹	.	1	.
Travel & Tourism	6	10	66.67%
Human Services			
Addictions Counseling	57	40	-29.82%
General Human Services	89	81	-8.99%
Interpreter Preparation Program	59	74	25.42%
Therapeutic Recreation	20	19	-5.00%
International Business	19	46	142.11%
Jewelry	15	18	20.00%
Land Surveying Technology	17	25	47.06%
Legal Assistant	155	146	-5.81%
Management	306	296	-3.27%
Administrative Specialist ¹	1	2	100.00%
Marketing	233	232	-0.43%
Fashion Merchandising	108	109	0.93%

¹ Programs no longer active, but students already in the pipeline may be allowed to complete the degree plan.

Source: Fall 12th Class Day Data

**Student Characteristics
Declared Majors
Fall 2007**

Associate of Applied Science (AAS) (continued)

	Fall 2006	Fall 2007	06-07 % chg
Medical Laboratory Technology	72	82	13.89%
Nursing			
Nursing Mobility Track	40	76	90.00%
Nursing Traditional Track	476	921	93.49%
Occupational Therapy Assistant	45	53	17.78%
Office Administration	17	15	-11.76%
Administrative Assistant	35	34	-2.86%
Legal Administrative Assistant	19	19	0.00%
Medical Administrative Assistant	42	39	-7.14%
Personal Fitness Trainer	16	19	18.75%
Photographic Technology			
Advertising-Fashion Focus	61	57	-6.56%
People-Portrait Focus	61	53	-13.11%
Photography & Graphic Arts ¹	1	1	0.00%
Professional Photography ¹	5	5	0.00%
Physical Fitness Technician ¹	3	12	300.00%
Physical Therapist Assistant	212	191	-9.91%
Printing & Desktop Publishing Production ¹	15	13	-13.33%
Quality Assurance Management & Technology ¹	.	2	.
Radiology	388	406	4.64%
Real Estate	96	115	19.79%
Sonography			
Diagnostic Cardiac Sonography	25	30	20.00%
Diagnostic Medical Sonography	72	95	31.94%
Surgical Technology	81	74	-8.64%
Undeclared	305	342	12.13%
Visual Communication Design	61	47	-22.95%
2D Animation Specialization	25	25	0.00%
3D Animation Specialization	111	112	0.90%
Graphic Arts Technology Specialization	.	6	.
Graphic Design Specialization	128	146	14.06%
Interactive Design Specialization	23	32	39.13%
Welding Technology	.	2	.
Art Metals	40	28	-30.00%
Code Welding	36	32	-11.11%
Code Welding-US Navy - Tech Prep ¹	4	2	-50.00%
TOTAL	7,162	7,754	8.27%

¹ Programs no longer active, but students already in the pipeline may be allowed to complete the degree plan.

**Student Characteristics
Declared Majors
Fall 2007**

Certificates

	Fall 2006	Fall 2007	06-07 % chg
Accounting			
Accounting Clerk	103	119	15.53%
Professional Accountant	39	55	41.03%
Architectural and Engineering Computer Aided Design			
Architectural and Engineering CAD	2	14	600.00%
Integrated Circuit Layout & Design Specialization	1	4	300.00%
Automotive Technology			
Automotive Drive Train Specialist	8	6	-25.00%
Automotive Engine Performance Specialist	24	29	20.83%
Automotive Heating & Air Conditioning	13	8	-38.46%
Automotive Technician	87	85	-2.30%
Automotive Technology Advanced Skills Certificate ¹	0	1	.
Automotive Technology Enhanced Skills Certificate	8	9	12.50%
Brake & Suspension	6	3	-50.00%
Marine Engine Repair	5	4	-20.00%
Motorcycle Repair	16	14	-12.50%
Small Engine Repair	1	5	400.00%
Biotechnology	29	42	44.83%
Building Construction Technology	0	1	.
Cabinetry & Interior Finishes ¹	3	3	0.00%
Carpentry	38	24	-36.84%
Construction Manager	12	24	100.00%
Enhanced Skills Certificate ¹	0	2	.
Woodworking	16	17	6.25%
Business and Technical Communications			
Business & Government Communications	203	312	53.69%
Technical Communications	103	149	44.66%
Business Management ¹	0	1	.
Child Development	250	336	34.40%
Enhanced Skills	25	35	40.00%
Computer Information Technology			
Computer Information Technology Database	67	77	14.93%
Computer Programming-C++ Track	47	43	-8.51%
Computer Programming-Java Track	25	30	20.00%
Local Area Network Systems Network Administration	25	19	-24.00%
Web Developer Specialist	27	46	70.37%

¹ Programs no longer active, but students already in the pipeline may be allowed to complete the degree plan.

Source: Fall 12th Class Day Data

**Student Characteristics
Declared Majors
Fall 2007**

Certificates (continued)

	06-07		
	Fall 2006	Fall 2007	% chg
Criminal Justice - Texas Peace Officer Sequence	125	157	25.60%
Culinary Arts	50	70	40.00%
Culinarian	10	11	10.00%
Diagnostic Medical Imaging			
Advanced Technical Certificate	8	7	-12.50%
Diagnostic Cardiac Sonography	0	1	.
Vascular Technology Enhanced Skills Certificate	0	2	.
Digital Publishing & Graphics Technology ¹			
Desktop Publishing ¹	2	4	100.00%
Printing Production ¹	3	1	-66.67%
Printing & Desktop Publishing	0	1	.
Electronics and Advanced Technologies			
Automation, Robotics and Controls Technology	7	9	28.57%
Computer Electronics/Telecommunications	20	24	20.00%
Electronic Technology ¹	0	1	.
Engineering Technology	57	97	70.18%
Power Technology	1	3	200.00%
Semiconductor Manufacturing Technology Specialist	11	10	-9.09%
Technician	22	24	9.09%
Emergency Medical Services			
EMT Intermediate Certificate	13	22	69.23%
EMT Paramedic Certificate	29	36	24.14%
Engineering Design Graphics ¹	50	47	-6.00%
Integrated Circuit Layout & Design Specialist ¹	4	8	100.00%
Environmental Science and Technology	1	0	.
Financial Management and Mortgage Banking	5	0	.
Financial Management ¹	0	1	.
Mortgage Banking	0	10	.
Fire Protection	55	76	38.18%
Heating, Air Conditioning & Refrigeration	63	47	-25.40%
Hospitality Management	26	33	26.92%
Meeting Planning	20	14	-30.00%
Travel & Tourism	18	29	61.11%

¹ Programs no longer active, but students already in the pipeline may be allowed to complete the degree plan.

Source: Fall 12th Class Day Data

**Student Characteristics
Declared Majors
Fall 2007**

Certificates (continued)

	Fall 2006	Fall 2007	06-07 % chg
Human Services	2	1	-50.00%
Addictions Counseling Certificate	26	36	38.46%
American Sign Language Studies	38	57	50.00%
Interpreter Preparation Program	19	24	26.32%
Therapeutic Recreation	14	27	92.86%
International Business	78	55	-29.49%
Jewelry	22	23	4.55%
Land Surveying Technology	10	7	-30.00%
Legal Assistant	68	66	-2.94%
Management	9	4	-55.56%
Administrative Management	83	106	27.71%
International Business ¹	.	7	.
Management Specialties Leadership	13	18	38.46%
Small Business Management	86	87	1.16%
Marketing	1	1	0.00%
Basic Skills	96	128	33.33%
Enhanced Skills Certificate	26	30	15.38%
Fashion Merchandising	54	53	-1.85%
Medical Coding Specialist	45	67	48.89%
Nursing (Vocational)	463	494	6.70%
Office Administration			
Administrative Assistant	32	34	6.25%
Legal Administrative Assistant Specialization	12	17	41.67%
Medical Administrative Assistant Specialization	19	14	-26.32%
Medical Office Assistant Specialization	28	36	28.57%
Office Assistant	16	21	31.25%
Software Applications Specialist	3	6	100.00%
Personal Fitness Technology ¹	44	38	-13.64%
Pharmacy Technician	93	120	29.03%
Photographic Technology			
Digital Assistant	0	1	.
Photographic Artist	73	80	9.59%
Photographic Assistant ¹	10	5	-50.00%
Photojournalism ¹	15	33	120.00%
Physical Fitness Technology ¹	3	3	0.00%
Quality Management & Technology Certificate	1	0	.

¹ Programs no longer active, but students already in the pipeline may be allowed to complete the degree plan.

Source: Fall 12th Class Day Data

Student Characteristics
Declared Majors
Fall 2007

Certificates (continued)

			06-07
	Fall 2006	Fall 2007	% chg
Radiology			
Cardiovascular Interventional Radiology	12	10	-16.67%
Computerized Tomography	2	2	0.00%
Magnetic Resonance Imaging	1	3	200.00%
Radio-Television-Film			
Film/Production Video	37	63	70.27%
Film/Video Production Management	14	15	7.14%
Industrial Video ¹	0	5	.
Industrial Video Production Management ¹	0	4	.
Real Estate	143	146	2.10%
Surgical Technology	24	27	12.50%
Undeclared	917	1,334	45.47%
Visual Communication Design			
2D Animation	10	20	100.00%
3D Animation	27	37	37.04%
Applied Multimedia Technology ¹	11	15	36.36%
Graphic Design	53	70	32.08%
Interactive Design	7	12	71.43%
Prepress ¹	21	19	-9.52%
Web Specialization	12	18	50.00%
Welding Technology	1	2	100.00%
Art Metals	20	26	30.00%
Inspection	9	18	100.00%
Jewelry Fabrication ¹	0	2	.
Metal Sculpture	16	16	0.00%
Pipe Welding	11	8	-27.27%
Plate Welding	16	13	-18.75%
Ultrahigh Purity Piping	1	1	0.00%
TOTAL	4,650	5,847	25.74%

¹ Programs no longer active, but students already in the pipeline may be allowed to complete the degree plan.

Source: Fall 12th Class Day Data

**Student Characteristics
Declared Majors
Fall 2007**

Other

	Fall 2006	Fall 2007	06-07 % chg
Field of Study			
4-8 Teacher Certificate	1	0	.
Business Administration	4	6	50.00%
Criminal Justice	2	0	-100.00%
Early Childhood Education	0	1	.
Marketable Skills Award			
Accounting Specialist	0	1	.
Accounting Technician	1	4	300.00%
Building Construction	0	11	.
Professional Accountant	3	6	100.00%
No Major Data	128	0	.
Pre-Nursing Mobility Track Prerequisites	144	122	-15.28%
Pre-Nursing Traditional Track Prerequisites	1,450	983	-32.21%
Texas Core Curriculum	2	0	.
Pre-Sonography Prerequisites	140	82	-41.43%
Undeclared	853	733	-14.07%
Intend to Transfer	2,503	1,921	-23.25%
Major Not Offered	322	327	1.55%
Non-Degree Seeking	303	274	-9.57%
Taking Courses for Self Improvement	390	335	-14.10%
TOTAL	6,246	4,806	-23.05%

Summary

	Fall 2006	Fall 2007	06-07 % chg
Associates of Arts	8,478	8,171	-3.62%
Associates of Arts in Teaching	417	884	111.99%
Associates of Science	6,086	6,046	-0.66%
Associates of Applied Science	7,168	7,754	8.18%
Certificates	4,650	5,847	25.74%
Other	6,246	4,806	-23.05%
TOTAL	33,045	33,508	1.40%

Source: Fall 12th Class Day Data

Student Characteristics
High School Concurrent Enrollment by School District
Fall 2003 - 2007

School District	Headcount					03-07
	Fall 2003	Fall 2004	Fall 2005	Fall 2006	Fall 2007	% Chg
Austin ISD	191	237	368	469	396	107.33%
Bastrop ISD	11	23	53	68	67	509.09%
Blanco ISD	-	8	26	22	15	.
Del Valle ISD	19	39	1	24	18	-5.26%
Dripping Springs ISD	7	46	69	42	51	628.57%
Eanes ISD	53	48	36	36	22	-58.49%
Elgin ISD	7	14	9	17	17	142.86%
Fredericksburg ISD	47	36	32	34	36	-23.40%
Georgetown ISD	135	105	140	146	129	-4.44%
Harper ISD	15	24	28	31	32	113.33%
Hays CISD	71	44	65	78	95	33.80%
Jarrell ISD	17	16	43	34	18	5.88%
Johnson City ISD	3	14	14	12	14	366.67%
Lago Vista ISD	4	15	21	30	35	775.00%
Lake Travis ISD	75	98	61	86	79	5.33%
Leander ISD	63	95	165	200	285	352.38%
Liberty Hill ISD	29	46	72	89	97	234.48%
Lockhart ISD	60	53	123	126	140	133.33%
Luling ISD	17	20	45	29	40	135.29%
Manor ISD	26	16	19	20	37	42.31%
Nixon-Smiley ISD	17	14	18	18	29	70.59%
Pflugerville ISD	74	61	58	65	53	-28.38%
Prairie Lea ISD	-	1	1	1	4	.
Round Rock ISD	116	146	113	99	167	43.97%
San Marcos CISD	51	33	24	46	62	21.57%
Smithville ISD	2	-	5	5	5	150.00%
Wimberley ISD	31	17	20	22	97	212.90%
Other ¹	204	231	269	361	376	84.31%
TOTAL	1,345	1,500	1,898	2,210	2,416	79.63%

¹ Other includes home-schooled students, students enrolled in private schools, and students with no high school identified.

NOTES: Concurrently enrolled students are enrolled in high school (as juniors and seniors) and in college. These students receive college credit and may receive high school graduation credit for the classes they take at ACC.

Source: Fall 12th Class Day Data

**Student Characteristics
First-Time in College Students
Fall 2005 - 2007**

	Fall 2005		Fall 2006		Fall 2007		05-07 % chg
Student Headcount	4,986		6,236		5,962		19.57%
Residency							
In-District	2,955	59.3%	3,716	59.6%	3,389	56.8%	14.69%
Out-of-District	1,871	37.5%	2,327	37.3%	2,393	40.1%	27.90%
Out-of-State/International	158	3.2%	154	2.5%	127	2.1%	-19.62%
Other/Unknown ¹	2	0.0%	39	0.6%	53	0.9%	2550.00%
Gender							
Male	2,433	48.8%	2,958	47.4%	2,770	46.5%	13.85%
Female	2,553	51.2%	3,278	52.6%	3,192	53.5%	25.03%
Ethnicity							
White	2,922	58.6%	3,534	56.7%	3,521	59.1%	20.50%
Hispanic	1,370	27.5%	1,783	28.6%	1,515	25.4%	10.58%
Black	387	7.8%	477	7.6%	481	8.1%	24.29%
Asian/Pacific Islander	163	3.3%	234	3.8%	252	4.2%	54.60%
Am. Indian/Alaskan Native	41	0.8%	56	0.9%	72	1.2%	75.61%
Non-Resident Alien	61	1.2%	75	1.2%	56	0.9%	-8.20%
Other/Unknown	42	0.8%	77	1.2%	65	1.1%	54.76%
Age							
16 and Under	426	8.5%	792	12.7%	800	13.4%	87.79%
17	772	15.5%	939	15.1%	968	16.2%	25.39%
18	1,972	39.6%	2,247	36.0%	2,219	37.2%	12.53%
19-21	1,056	21.2%	1,253	20.1%	1,119	18.8%	5.97%
22-24	292	5.9%	341	5.5%	294	4.9%	0.68%
25-30	357	7.2%	339	5.4%	293	4.9%	-17.93%
31-35	94	1.9%	143	2.3%	95	1.6%	1.06%
36-50	98	2.0%	165	2.6%	147	2.5%	50.00%
51-64	17	0.3%	18	0.3%	20	0.3%	17.65%
65 and Over	2	0.0%	2	0.0%	2	0.0%	0.00%
Unknown	0	0.0%	0	0.0%	5	0.1%	.

¹ Other includes students with tuition exemptions and waivers.

NOTE: First-time in college students have never attended college or any other postsecondary institution and are not reported as first-time-entering college until they have completed their high school work.

Source: Fall 12th Class Day Data

**Student Characteristics
Developmental Education - Reading
Fall 2006 - 2007**

	Fall 2006		Fall 2007		06-07 % Chg
Student Headcount	1,101		1,064		-3.36%
Residency					
In-District	789	71.66%	716	67.29%	-9.25%
Out-of-District	259	23.52%	306	28.76%	18.15%
Out-of-State/International	37	3.36%	32	3.01%	-13.51%
Other/Unknown ¹	16	1.45%	10	0.94%	-37.50%
Gender					
Male	457	41.51%	427	40.13%	-6.56%
Female	644	58.49%	637	59.87%	-1.09%
Student Status					
Part-time	1,043	94.73%	999	93.89%	-4.22%
Full-time ²	58	5.27%	65	6.11%	12.07%
Ethnicity					
White	321	29.16%	312	29.32%	-2.80%
Hispanic	457	41.51%	425	39.94%	-7.00%
Black	218	19.80%	226	21.24%	3.67%
Asian/Pacific Islander	51	4.63%	56	5.26%	9.80%
Am. Indian/Alaskan Native	6	0.54%	11	1.03%	83.33%
Non-Resident Alien	27	2.45%	15	1.41%	-44.44%
Other/Unknown	21	1.91%	19	1.79%	-9.52%
Age					
16 and Under	3	0.27%	2	0.19%	-33.33%
17	26	2.36%	24	2.26%	-7.69%
18	366	33.24%	383	36.00%	4.64%
19-21	400	36.33%	383	36.00%	-4.25%
22-24	110	9.99%	98	9.21%	-10.91%
25-30	103	9.36%	77	7.24%	-25.24%
31-35	35	3.18%	37	3.48%	5.71%
36-50	52	4.72%	53	4.98%	1.92%
51-64	5	0.45%	6	0.56%	20.00%
65 and Over	1	0.09%	1	0.09%	0.00%
Unknown	0	0.00%	0	0.00%	.
Average Age	21.63	.	21.57	.	-0.28%

¹ Other includes students with tuition exemptions and waivers.

² Full-time - 12 credit hours or more.

NOTE: Unduplicated headcount of students who were enrolled in at least one Developmental Reading course.

Source: Fall 12th Class Day Data

**Student Characteristics
Developmental Education - Writing
Fall 2006 - 2007**

	Fall 2006		Fall 2007		06-07 % Chg
Student Headcount	673		667		-0.89%
Residency					
In-District	500	74.29%	464	69.57%	-7.20%
Out-of-District	146	21.69%	182	27.29%	24.66%
Out-of-State/International	17	2.53%	18	2.70%	5.88%
Other/Unknown ¹	10	1.49%	3	0.45%	-70.00%
Gender					
Male	335	49.78%	331	49.63%	-1.19%
Female	338	50.22%	336	50.37%	-0.59%
Student Status					
Part-time	606	90.04%	602	90.25%	-0.66%
Full-time ²	67	9.96%	65	9.75%	-2.99%
Ethnicity					
White	203	30.16%	220	32.98%	8.37%
Hispanic	291	43.24%	250	37.48%	-14.09%
Black	117	17.38%	131	19.64%	11.97%
Asian/Pacific Islander	28	4.16%	32	4.80%	14.29%
Am. Indian/Alaskan Native	4	0.59%	6	0.90%	50.00%
Non-Resident Alien	14	2.08%	12	1.80%	-14.29%
Other/Unknown	16	2.38%	16	2.40%	0.00%
Age					
16 and Under	1	0.15%	1	0.15%	0.00%
17	10	1.49%	10	1.50%	0.00%
18	197	29.27%	191	28.64%	-3.05%
19-21	237	35.22%	237	35.53%	0.00%
22-24	83	12.33%	76	11.39%	-8.43%
25-30	64	9.51%	54	8.10%	-15.63%
31-35	26	3.86%	33	4.95%	26.92%
36-50	47	6.98%	51	7.65%	8.51%
51-64	8	1.19%	11	1.65%	37.50%
65 and Over	0	0.00%	2	0.30%	.
Unknown	1	0.15%	1	0.15%	0.00%
Average Age	22.67	.	23.22	.	2.43%

¹ Other includes students with tuition exemptions and waivers.

² Full-time - 12 credit hours or more.

NOTE: Unduplicated headcount of students who were enrolled in at least one Developmental Writing course.

Source: Fall 12th Class Day Data

**Student Characteristics
Developmental Education - Math
Fall 2006 - 2007**

	Fall 2006		Fall 2007		06-07 % Chg
Student Headcount	6,765		6,690		-1.11%
Residency					
In-District	4,760	70.36%	4,632	69.24%	-2.69%
Out-of-District	1,771	26.18%	1,854	27.71%	4.69%
Out-of-State/International	204	3.02%	169	2.53%	-17.16%
Other/Unknown ¹	30	0.44%	35	0.52%	16.67%
Gender					
Male	2,816	41.63%	2,718	40.63%	-3.48%
Female	3,949	58.37%	3,972	59.37%	0.58%
Student Status					
Part-time	4,571	67.57%	4,539	67.85%	-0.70%
Full-time ²	2,194	32.43%	2,151	32.15%	-1.96%
Ethnicity					
White	3,334	49.28%	3,375	50.45%	1.23%
Hispanic	2,231	32.98%	2,081	31.11%	-6.72%
Black	770	11.38%	817	12.21%	6.10%
Asian/Pacific Islander	176	2.60%	220	3.29%	25.00%
Am. Indian/Alaskan Native	72	1.06%	61	0.91%	-15.28%
Non-Resident Alien	90	1.33%	65	0.97%	-27.78%
Other/Unknown	92	1.36%	71	1.06%	-22.83%
Age					
16 and Under	13	0.19%	6	0.09%	-53.85%
17	85	1.26%	108	1.61%	27.06%
18	1,149	16.98%	1,225	18.31%	6.61%
19-21	2,435	35.99%	2,345	35.05%	-3.70%
22-24	970	14.34%	975	14.57%	0.52%
25-30	1,107	16.36%	1,012	15.13%	-8.58%
31-35	421	6.22%	427	6.38%	1.43%
36-50	519	7.67%	532	7.95%	2.50%
51-64	64	0.95%	51	0.76%	-20.31%
65 and Over	2	0.03%	7	0.10%	250.00%
Unknown	0	0.00%	2	0.03%	.
Average Age	23.85	.	23.82	.	-0.13%

¹ Other includes students with tuition exemptions and waivers.

² Full-time - 12 credit hours or more.

NOTE: Unduplicated headcount of students who were enrolled in at least one Developmental Math course.

Source: Fall 12th Class Day Data

**Student Characteristics
Developmental Education - Other¹
Fall 2006 - 2007**

	Fall 2006		Fall 2007		06-07 % Chg
Student Headcount	1,160		1,291		11.29%
Residency					
In-District	852	73.45%	893	69.17%	4.81%
Out-of-District	257	22.16%	340	26.34%	32.30%
Out-of-State/International	36	3.10%	35	2.71%	-2.78%
Other/Unknown ²	15	1.29%	23	1.78%	53.33%
Gender					
Male	511	44.05%	548	42.45%	7.24%
Female	649	55.95%	743	57.55%	14.48%
Student Status					
Part-time	959	82.67%	1,064	82.42%	10.95%
Full-time ³	201	17.33%	227	17.58%	12.94%
Ethnicity					
White	456	39.31%	472	36.56%	3.51%
Hispanic	435	37.50%	483	37.41%	11.03%
Black	184	15.86%	223	17.27%	21.20%
Asian/Pacific Islander	38	3.28%	45	3.49%	18.42%
Am. Indian/Alaskan Native	7	0.60%	17	1.32%	142.86%
Non-Resident Alien	24	2.07%	25	1.94%	4.17%
Other/Unknown	16	1.38%	26	2.01%	62.50%
Age					
16 and Under	1	0.09%	1	0.08%	0.00%
17	21	1.81%	28	2.17%	33.33%
18	327	28.19%	382	29.59%	16.82%
19-21	439	37.84%	487	37.72%	10.93%
22-24	137	11.81%	150	11.62%	9.49%
25-30	126	10.86%	126	9.76%	0.00%
31-35	46	3.97%	41	3.18%	-10.87%
36-50	58	5.00%	66	5.11%	13.79%
51-64	5	0.43%	9	0.70%	80.00%
65 and Over	0	0.00%	1	0.08%	.
Unknown	0	0.00%	0	0.00%	.
Average Age	22.06	.	22.03	.	-0.14%

¹ Other includes human development and study skills.

² Other includes students with tuition exemptions and waivers.

³ Full-time - 12 credit hours or more.

NOTE: Unduplicated headcount of students who were enrolled in at least one Developmental Other¹ course.

Source: Fall 12th Class Day Data