

# Student Demographics

This section can be used for finding:

- student headcount.
- student characteristics statistics.

## Contents

Useful Terms .....	24
<b>Summer 2007</b>	
Student Characteristics District-wide .....	25
Headcount by Age and Gender .....	26
Headcount by Ethnicity and Gender .....	27
Headcount by Day/Evening Classification .....	28
Headcount by Region and Zip Code .....	29
Headcount by Zip Code .....	35
Developmental Education .....	38
<b>Fall 2007</b>	
Student Characteristics District-wide .....	43
Headcount by Age and Gender .....	44
Headcount by Ethnicity and Gender .....	45
Headcount by Gender and Full/Part-time Status .....	46
Headcount by Ethnicity and Full/Part-time Status .....	46
Headcount by Full/Part-time Status .....	47
Headcount by Day/Evening Classification .....	48
Headcount by Region and Zip Code .....	49
Headcount by Zip Code Map .....	55
Headcount by Zip Code .....	56
Declared Majors .....	59
High School Concurrent Enrollment by School District .....	69
First-Time in College Students .....	70
Developmental Education .....	71
<b>Spring 2008</b>	
Student Characteristics District-wide .....	75
Headcount by Age and Gender .....	76
Headcount by Ethnicity and Gender .....	77
Headcount by Day/Evening Classification .....	78
Headcount by Region and Zip Code .....	79
Headcount by Zip Code .....	85
Developmental Education .....	88

## Useful Terms

**4th Class Day Data (Second 5½ week session)** – total enrollments for all summer classes, as of the 4<sup>th</sup> day of class of the second 5½ week session.  
(Official Reporting Date for the Summer Semester)

**12th Class Day Data** – total enrollments as of the 12th day of class of the 16 week session.  
(Official Reporting Date for the Fall and Spring Semesters.)

**Headcount** – the number of students enrolled in one or more courses. This number may be duplicated or unduplicated.

**High School Concurrent Enrollment** – the number of students enrolled in high school (as juniors and seniors) and in college. These students receive college credit and may receive high school graduation credit for the classes they take at ACC.

**In-district** – students who live within ACC’s tax-paying districts and pay taxes in support of the college and receive lower in-district tuition rates. Students who live or own property within the City of Austin or the Austin, Del Valle, Leander, Manor, or Round Rock Independent School Districts, as well as portions of Eanes and Pflugerville Independent School Districts are considered in-district students.

**Out-of-district** – students who live outside ACC’s in-district taxing boundaries as identified in the in-district definition. Higher out-of-district tuition rates are charged to out-of-district students.

**Reporting Dates** – Fall/Spring: 12th Class Day  
Summer: 4th Class Day of the second 5½ week session

**Telecommunicated Instruction** - courses delivered to individuals and groups by synchronous or asynchronous methods. Delivery methods include instructional television (using recorded video programs shown on cable TV and on cassette), personal computer with modem (using Internet and email), print-based courses (using a textbook), directed studies, and live televised classes (to individual students via the Internet or cable television).

**Student Characteristics  
District-wide  
Summer 2005 - 2007**

	Summer 2005	Summer 2006	Summer 2007	05-07 % chg
<b>Student Headcount</b>	<b>21,890</b>	<b>22,303</b>	<b>23,311</b>	<b>6.49%</b>
<b>Credit Hours</b>	116,131	117,877	121,341	4.49%
<b>Average Credit Hours</b>	5.31	5.29	5.21	-1.88%
<b>Contact Hours</b>	2,187,352	2,213,584	2,290,712	4.73%
<b>Average Contact Hours</b>	99.92	99.25	98.27	-1.66%
<b>Residency</b>				
In-District	16,168 73.86%	16,184 72.56%	16,818 72.15%	4.02%
Out-of-District	5,114 23.36%	5,512 24.71%	5,904 25.33%	15.45%
Out-of-State/International	357 1.63%	401 1.80%	350 1.50%	-1.96%
Other/Unknown <sup>1</sup>	251 1.15%	206 0.92%	239 1.03%	-4.78%
<b>Gender</b>				
Male	8,886 40.59%	9,112 40.86%	9,648 41.39%	8.58%
Female	13,004 59.41%	13,191 59.14%	13,663 58.61%	5.07%
<b>Student Status</b>				
Part-time	11,179 51.07%	11,472 51.44%	12,261 52.60%	9.68%
Full-time <sup>2</sup>	10,711 48.93%	10,831 48.56%	11,050 47.40%	3.16%
<b>Ethnicity</b>				
White	13,167 60.15%	13,277 59.53%	13,622 58.44%	3.46%
Hispanic	4,391 20.06%	4,547 20.39%	4,869 20.89%	10.89%
Black	1,607 7.34%	1,728 7.75%	1,731 7.43%	7.72%
Asian/Pacific Islander	1,697 7.75%	1,780 7.98%	2,067 8.87%	21.80%
Am. Indian/Alaskan Native	147 0.67%	160 0.72%	171 0.73%	16.33%
Non-Resident Alien	489 2.23%	492 2.21%	413 1.89%	-15.54%
Other/Unknown	392 1.79%	319 1.43%	438 2.00%	11.73%
<b>Age</b>				
16 and Under	1,053 4.81%	1,401 6.28%	1,647 7.07%	56.41%
17	1,142 5.22%	1,295 5.81%	1,508 6.47%	32.05%
18	1,070 4.89%	1,084 4.86%	1,140 4.89%	6.54%
19-21	7,714 35.24%	7,691 34.48%	7,940 34.06%	2.93%
22-24	3,710 16.95%	3,612 16.20%	3,556 15.25%	-4.15%
25-30	3,416 15.61%	3,399 15.24%	3,598 15.43%	5.33%
31-35	1,500 6.85%	1,515 6.79%	1,520 6.52%	1.33%
36-50	1,917 8.76%	1,920 8.61%	1,963 8.42%	2.40%
51-64	339 1.55%	361 1.62%	399 1.71%	17.70%
65 and Over	29 0.13%	25 0.11%	40 0.17%	37.93%
Average Age	24.50	24.30	24.25	-1.02%

<sup>1</sup> Other includes students with tuition exemptions and waivers.

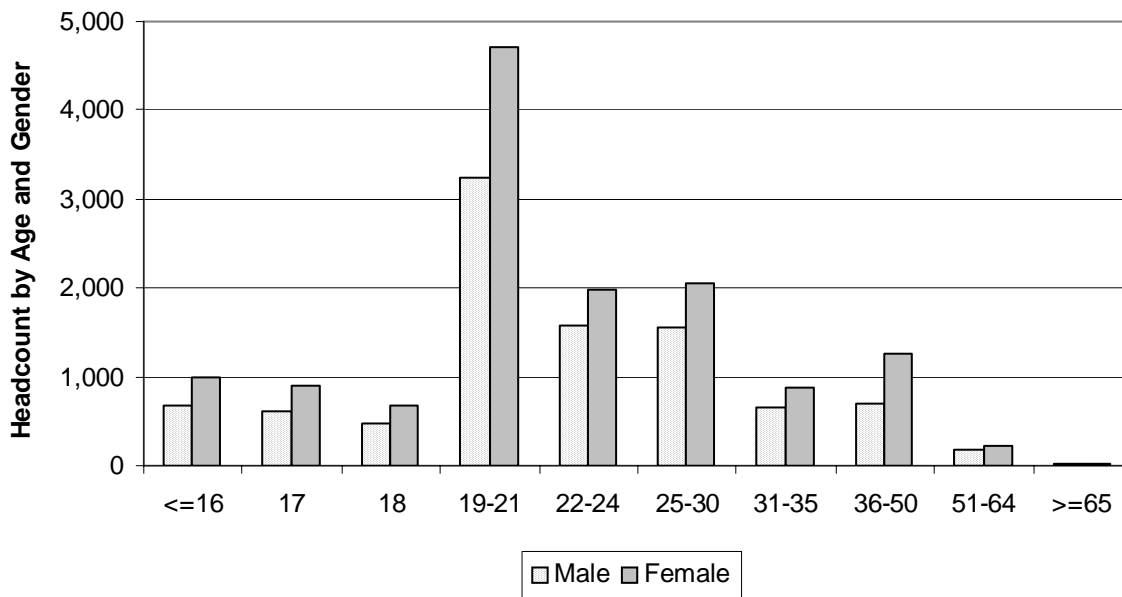
<sup>2</sup> Full-time - 6 credit hours or more.

NOTE: Percents may not add to 100 due to rounding.

Source: 4th Class Day Data (Second 5½ week session)

### Student Characteristics Headcount by Age and Gender Summer 2007

Age	Male		Female		Total	
<b>16 and Under</b>	666	6.90%	981	7.18%	1,647	7.07%
<b>17</b>	608	6.30%	900	6.59%	1,508	6.47%
<b>18</b>	462	4.79%	678	4.96%	1,140	4.89%
<b>19-21</b>	3,238	33.56%	4,702	34.41%	7,940	34.06%
<b>22-24</b>	1,583	16.41%	1,973	14.44%	3,556	15.25%
<b>25-30</b>	1,543	15.99%	2,055	15.04%	3,598	15.43%
<b>31-35</b>	651	6.75%	869	6.36%	1,520	6.52%
<b>36-50</b>	702	7.28%	1,261	9.23%	1,963	8.42%
<b>51-64</b>	171	1.77%	228	1.67%	399	1.71%
<b>65 and Over</b>	24	0.25%	16	0.12%	40	0.17%
<b>TOTAL</b>	<b>9,648</b>	<b>100.00%</b>	<b>13,663</b>	<b>100.00%</b>	<b>23,311</b>	<b>100.00%</b>

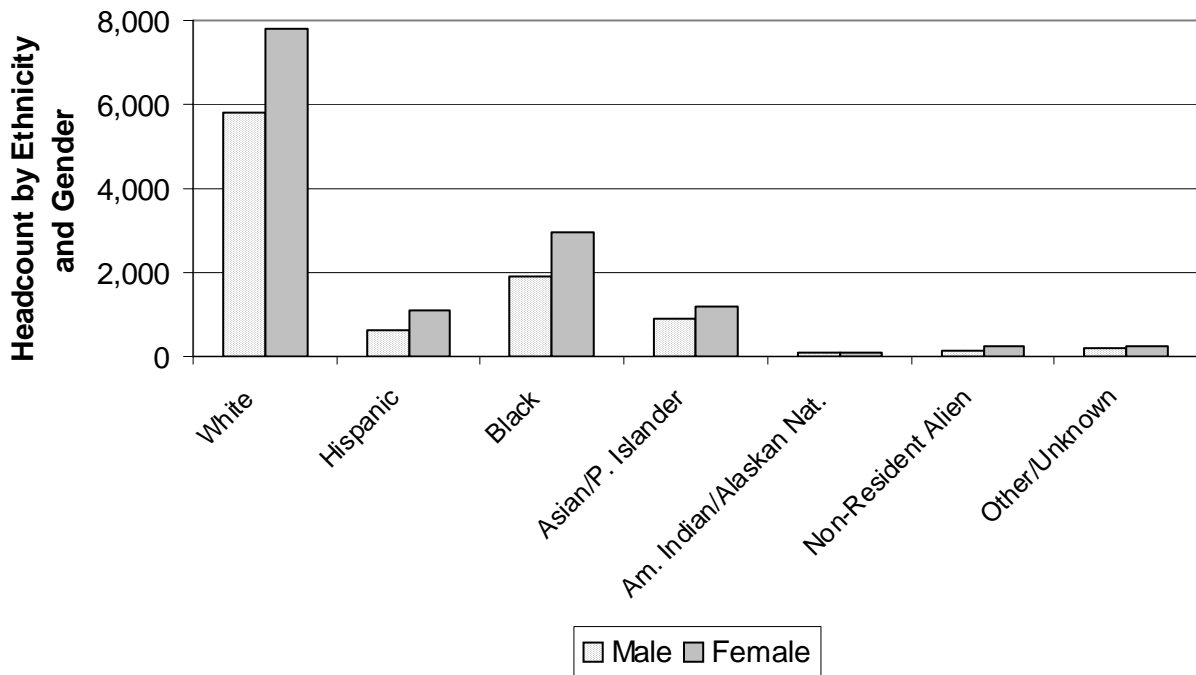


NOTE: Percents may not add to 100 due to rounding.

Source: 4th Class Day Data (Second 5½ week session)

**Student Characteristics  
Headcount by Ethnicity and Gender  
Summer 2007**

Ethnicity	Male		Female		Total	
<b>White</b>	5,798	60.10%	7,824	57.26%	13,622	58.44%
<b>Hispanic</b>	612	6.34%	1,119	8.19%	1,731	7.43%
<b>Black</b>	1,896	19.65%	2,973	21.76%	4,869	20.89%
<b>Asian/Pacific Islander</b>	899	9.32%	1,168	8.55%	2,067	8.87%
<b>Am. Indian/Alaskan Native</b>	98	1.02%	73	0.53%	171	0.73%
<b>Non-Resident Alien</b>	162	1.68%	251	1.84%	413	1.77%
<b>Other/Unknown</b>	183	1.90%	255	1.87%	438	1.88%
<b>TOTAL</b>	<b>9,648</b>	<b>100.00%</b>	<b>13,663</b>	<b>100.00%</b>	<b>23,311</b>	<b>100.00%</b>



NOTE: Percents may not add to 100 due to rounding.

Source: 4th Class Day Data (Second 5½ week session)

**Student Characteristics  
Headcount by Day/Evening Classification  
Summer 2005 - 2007**

Classification	Summer 2005	Summer 2006	Summer 2007	05-07 % chg
<b>Day</b>	9,263	9,750	10,401	12.29%
<b>% of Total</b>	42.32%	43.72%	44.62%	
<b>Evening</b>	4,250	4,024	4,118	-3.11%
<b>% of Total</b>	19.42%	18.04%	17.67%	
<b>Telecommunicated</b>	3,908	4,105	4,343	11.13%
<b>% of Total</b>	17.85%	18.41%	18.63%	
<b>Day &amp; Evening</b>	2,025	1,899	2,015	-0.49%
<b>% of Total</b>	9.25%	8.51%	8.64%	
<b>Day &amp; Telecommunicated</b>	1,392	1,426	1,419	1.94%
<b>% of Total</b>	6.36%	6.39%	6.09%	
<b>Evening &amp; Telecommunicated</b>	715	721	636	-11.05%
<b>% of Total</b>	3.27%	3.23%	2.73%	
<b>Day &amp; Evening &amp; Telecommunicated</b>	225	250	219	-2.67%
<b>% of Total</b>	1.03%	1.12%	0.94%	
<b>Non-identifiable</b>	112	128	160	42.86%
<b>% of Total</b>	0.51%	0.57%	0.69%	
<b>Total</b>	<b>21,890</b>	<b>22,303</b>	<b>23,311</b>	<b>6.5%</b>

NOTES: Classifications are mutually exclusive. Day students are enrolled in courses that begin before 5:30 PM and evening students are enrolled in courses that begin at or after 5:30 PM. The "Non-identifiable" category includes self-paced courses and courses without designated meeting times. Percents may not add to 100 due to rounding.

Source: 4th Class Day Data (Second 5½ week session)

### Headcount by Region and Zip Code Summer 2005 - 2007

Region	Zip Code	Summer 2005	Summer 2006	Summer 2007	05-07 % chg
<b>Austin, Central</b>					
Austin	78701	129	111	95	-26.36%
Austin	78703	335	304	252	-24.78%
Austin	78705	1,704	1,607	1,479	-13.20%
Austin	78712	1	0	0	-100.00%
Austin	78751	448	422	416	-7.14%
Austin	78752	236	194	186	-21.19%
Austin	78756	118	113	121	2.54%
Austin	78757	362	340	314	-13.26%
<b>Total</b>		<b>3,333</b>	<b>3,091</b>	<b>2,863</b>	<b>-14.10%</b>
<b>%of Grand Total</b>		<b>15.23%</b>	<b>14.12%</b>	<b>12.28%</b>	
<b>Austin, East</b>					
Austin	78702	287	268	267	-6.97%
Austin	78721	128	113	98	-23.44%
Austin	78722	129	134	131	1.55%
Austin	78723	368	343	285	-22.55%
<b>Total</b>		<b>912</b>	<b>858</b>	<b>781</b>	<b>-14.36%</b>
<b>%of Grand Total</b>		<b>4.17%</b>	<b>3.92%</b>	<b>3.35%</b>	
<b>Austin, North</b>					
Austin	78727	424	469	476	12.26%
Austin	78728	184	213	191	3.80%
Austin	78758	904	809	755	-16.48%
<b>Total</b>		<b>1,512</b>	<b>1,491</b>	<b>1,422</b>	<b>-5.95%</b>
<b>%of Grand Total</b>		<b>6.91%</b>	<b>6.81%</b>	<b>6.10%</b>	
<b>Austin, Northwest</b>					
Austin	78726	191	220	201	5.24%
Austin	78730	79	78	87	10.13%
Austin	78731	483	446	415	-14.08%
Austin	78750	322	391	429	33.23%
Austin	78759	789	706	725	-8.11%
<b>Total</b>		<b>1,864</b>	<b>1,841</b>	<b>1,857</b>	<b>-0.38%</b>
<b>%of Grand Total</b>		<b>8.52%</b>	<b>8.41%</b>	<b>7.97%</b>	

NOTES: Headcount based on zip code data as reported and entered in the ACC database. Zip code regions are based on definitions developed by ACC administration.

Source: 4th Class Day Data (Second 5½ week session)

**Headcount by Region and Zip Code (continued)  
Summer 2005 - 2007**

<b>Region</b>	<b>Zip Code</b>	<b>Summer 2005</b>	<b>Summer 2006</b>	<b>Summer 2007</b>	<b>05-07 % chg</b>
<b>Austin/Travis County, South</b>					
Manchaca	78652	64	41	54	-15.63%
Austin	78704	826	771	728	-11.86%
Austin	78745	987	908	941	-4.66%
Austin	78748	696	658	590	-15.23%
<b>Total</b>		<b>2,573</b>	<b>2,378</b>	<b>2,313</b>	<b>-10.10%</b>
<b>%of Grand Total</b>		<b>11.75%</b>	<b>10.86%</b>	<b>9.92%</b>	
<b>Austin/Travis County, Southeast</b>					
Del Valle	78617	113	128	162	43.36%
Austin	78719	13	21	25	92.31%
Austin	78741	1,411	1,521	1,423	0.85%
Austin	78742	4	10	9	125.00%
Austin	78744	441	398	427	-3.17%
Austin	78747	132	130	122	-7.58%
<b>Total</b>		<b>2,114</b>	<b>2,208</b>	<b>2,168</b>	<b>2.55%</b>
<b>%of Grand Total</b>		<b>9.66%</b>	<b>10.09%</b>	<b>9.30%</b>	
<b>Austin/Travis County, Southwest</b>					
Austin	78735	175	188	186	6.29%
Austin	78736	138	145	144	4.35%
Austin	78739	214	261	274	28.04%
Austin	78746	393	418	418	6.36%
Austin	78749	729	695	688	-5.62%
<b>Total</b>		<b>1,649</b>	<b>1,707</b>	<b>1,710</b>	<b>3.70%</b>
<b>%of Grand Total</b>		<b>7.53%</b>	<b>7.80%</b>	<b>7.34%</b>	

NOTES: Headcount based on zip code data as reported and entered in the ACC database. Zip code regions are based on definitions developed by ACC administration.

Source: 4th Class Day Data (Secnd 5½ week session)



**Headcount by Region and Zip Code (continued)**  
**Summer 2005 - 2007**

Region	Zip Code	Summer 2005	Summer 2006	Summer 2007	05-07 % chg
<b>Bastrop County<sup>1</sup></b>					
Bastrop	78602	108	103	103	-4.63%
Cedar Creek	78612	50	46	50	0.00%
Elgin	78621	110	98	115	4.55%
McDade	78650	6	8	3	-50.00%
Paige	78659	6	9	13	116.67%
Red Rock	78662	16	12	14	-12.50%
Rosanky	78953	3	3	4	33.33%
Smithville	78957	29	26	41	41.38%
<b>Total</b>		<b>328</b>	<b>305</b>	<b>343</b>	<b>4.57%</b>
<b>% of Grand Total</b>		<b>1.50%</b>	<b>1.39%</b>	<b>1.47%</b>	
<b>Blanco County<sup>1</sup></b>					
Blanco	78606	22	38	37	68.18%
Hye	78635	1	0	1	0.00%
Johnson City	78636	34	34	29	-14.71%
Round Mountain	78663	3	5	3	0.00%
<b>Total</b>		<b>60</b>	<b>77</b>	<b>70</b>	<b>16.67%</b>
<b>% of Grand Total</b>		<b>0.27%</b>	<b>0.35%</b>	<b>0.30%</b>	
<b>Burnet County<sup>1</sup></b>					
Bertram	78605	6	6	13	116.67%
Briggs	78608	0	0	1	.
Burnet	78611	14	13	9	-35.71%
Marble Falls	78654	10	20	16	60.00%
<b>Total</b>		<b>30</b>	<b>39</b>	<b>39</b>	<b>30.00%</b>
<b>% of Grand Total</b>		<b>0.14%</b>	<b>0.18%</b>	<b>0.17%</b>	

<sup>1</sup> These numbers do not represent total enrollment for the county due to zip codes that span more than one county.

NOTES: Headcount based on zip code data as reported and entered in the ACC database. Zip code regions are based on definitions developed by ACC administration.

Source: 4th Class Day Data (Second 5½ week session)

**Headcount by Region and Zip Code (continued)  
Summer 2005 - 2007**

<b>Region</b>	<b>Zip Code</b>	<b>Summer 2005</b>	<b>Summer 2006</b>	<b>Summer 2007</b>	<b>05-07 % chg</b>
<b>Caldwell County<sup>1</sup></b>					
Dale	78616	17	23	20	17.65%
Lockhart	78644	74	60	71	-4.05%
Luling	78648	12	11	8	-33.33%
Martindale	78655	14	12	14	0.00%
Maxwell	78656	12	4	7	-41.67%
<b>Total</b>		<b>129</b>	<b>110</b>	<b>120</b>	<b>-6.98%</b>
<b>%of Grand Total</b>		<b>0.59%</b>	<b>0.50%</b>	<b>0.51%</b>	
<b>Cedar Park/Leander</b>					
Cedar Park	78613	849	942	877	3.30%
Leander	78641	503	460	442	-12.13%
Liberty Hill	78642	30	28	28	-6.67%
<b>Total</b>		<b>1,382</b>	<b>1,430</b>	<b>1,347</b>	<b>-2.53%</b>
<b>%of Grand Total</b>		<b>6.31%</b>	<b>6.53%</b>	<b>5.78%</b>	
<b>Georgetown/North Williamson County</b>					
Florence	76527	5	5	10	100.00%
Granger	76530	1	5	8	700.00%
Jarrell	76537	9	12	10	11.11%
Georgetown	78626	95	114	102	7.37%
Georgetown	78628	191	242	231	20.94%
<b>Total</b>		<b>301</b>	<b>378</b>	<b>361</b>	<b>19.93%</b>
<b>%of Grand Total</b>		<b>1.38%</b>	<b>1.73%</b>	<b>1.55%</b>	
<b>Gillespie County<sup>1</sup></b>					
Doss	78618	4	2	4	0.00%
Fredericksburg	78624	158	172	161	1.90%
Harper	78631	35	39	34	-2.86%
Stonewall	78671	6	3	5	-16.67%
Willow City	78675	1	1	3	200.00%
<b>Total</b>		<b>204</b>	<b>217</b>	<b>207</b>	<b>1.47%</b>
<b>%of Grand Total</b>		<b>0.93%</b>	<b>0.99%</b>	<b>0.89%</b>	

<sup>1</sup> These numbers do not represent total enrollment for the county due to zip codes that span more than one county.

NOTES: Headcount based on zip code data as reported and entered in the ACC database. Zip code regions are based on definitions developed by ACC administration.

Source: 4th Class Day Data (Second 5½ week session)

**Headcount by Region and Zip Code (continued)**  
**Summer 2005 - 2007**

Region	Zip Code	Summer 2005	Summer 2006	Summer 2007	05-07 % chg
<b>Gonzales County</b>					
Nixon	78140	0	0	1	.
Cost	78614	1	2	1	0.00%
Gonzales	78629	9	11	5	-44.44%
<b>Total</b>		<b>10</b>	<b>13</b>	<b>7</b>	<b>-30.00%</b>
<b>% of Grand Total</b>		<b>0.05%</b>	<b>0.06%</b>	<b>0.03%</b>	
<b>Hays County<sup>1</sup></b>					
Buda	78610	129	134	135	4.65%
Driftwood	78619	21	13	12	-42.86%
Dripping Springs	78620	75	85	80	6.67%
Kyle	78640	136	165	166	22.06%
San Marcos	78666	360	337	337	-6.39%
Wimberley	78676	42	46	40	-4.76%
Austin	78737	120	132	112	-6.67%
<b>Total</b>		<b>883</b>	<b>912</b>	<b>882</b>	<b>-0.11%</b>
<b>% of Grand Total</b>		<b>4.03%</b>	<b>4.17%</b>	<b>3.78%</b>	
<b>Manor/East Travis County</b>					
Manor	78653	150	168	153	2.00%
Austin	78724	134	140	147	9.70%
Austin	78725	51	58	83	62.75%
<b>Total</b>		<b>335</b>	<b>366</b>	<b>383</b>	<b>14.33%</b>
<b>% of Grand Total</b>		<b>1.53%</b>	<b>1.67%</b>	<b>1.64%</b>	
<b>Pflugerville/Northeast Travis County</b>					
Pflugerville	78660	502	562	572	13.94%
Austin	78753	586	619	567	-3.24%
Austin	78754	161	182	175	8.70%
<b>Total</b>		<b>1,249</b>	<b>1,363</b>	<b>1,314</b>	<b>5.20%</b>
<b>% of Grand Total</b>		<b>5.71%</b>	<b>6.23%</b>	<b>5.64%</b>	

<sup>1</sup> These numbers do not represent total enrollment for the county due to zip codes that span more than one county.

NOTES: Headcount based on zip code data as reported and entered in the ACC database. Zip code regions are based on definitions developed by ACC administration.

Source: 4th Class Day Data (Second 5½ week session)

**Headcount by Region and Zip Code (continued)  
Summer 2005 - 2007**

<b>Region</b>	<b>Zip Code</b>	<b>Summer 2005</b>	<b>Summer 2006</b>	<b>Summer 2007</b>	<b>05-07 % chg</b>
<b>Round Rock</b>					
Round Rock	78664	552	631	632	14.49%
Round Rock	78681	401	461	447	11.47%
Austin	78717	197	305	277	40.61%
Austin	78729	340	371	383	12.65%
<b>Total</b>		<b>1,490</b>	<b>1,768</b>	<b>1,739</b>	<b>16.71%</b>
<b>%of Grand Total</b>		<b>6.81%</b>	<b>8.08%</b>	<b>7.46%</b>	
<b>Taylor/Hutto/East Williamson County</b>					
Taylor	76574	21	21	14	-33.33%
Thrall	76578	1	2	0	-100.00%
Coupland	78615	6	3	4	-33.33%
Hutto	78634	43	57	75	74.42%
<b>Total</b>		<b>71</b>	<b>83</b>	<b>93</b>	<b>30.99%</b>
<b>%of Grand Total</b>		<b>0.32%</b>	<b>0.38%</b>	<b>0.40%</b>	
<b>West Travis County</b>					
Leander	78645	65	78	76	16.92%
Spicewood	78669	28	34	33	17.86%
Austin	78732	80	78	98	22.50%
Austin	78733	105	119	98	-6.67%
Austin	78734	148	150	153	3.38%
Austin	78738	82	109	97	18.29%
<b>Total</b>		<b>508</b>	<b>568</b>	<b>555</b>	<b>9.25%</b>
<b>%of Grand Total</b>		<b>2.32%</b>	<b>2.59%</b>	<b>2.38%</b>	
<b>Other/Unknown</b>		<b>953</b>	<b>1,100</b>	<b>2,737</b>	<b>187.20%</b>
<b>Total</b>		<b>953</b>	<b>1,100</b>	<b>2,737</b>	<b>187.20%</b>
<b>%of Grand Total</b>		<b>4.35%</b>	<b>5.03%</b>	<b>11.74%</b>	
<b>GRAND TOTAL</b>		<b>21,890</b>	<b>21,890</b>	<b>23,311</b>	<b>6.49%</b>

NOTES: Headcount based on zip code data as reported and entered in the ACC database. Zip code regions are based on definitions developed by ACC administration.

Source: 4th Class Day Data (Second 5½ week session)

Headcount by Zip Code  
Summer 2005 - 2007

Zip Code	Region	Summer 2005	Summer 2006	Summer 2007	05-07 % chg
76527	Florence	5	5	10	100.00%
76530	Granger	1	5	8	700.00%
76537	Jarrell	9	12	10	11.11%
76574	Taylor	21	21	14	-33.33%
76578	Thrall	1	2	0	-100.00%
78140	Nixon	0	0	1	.
78602	Bastrop	108	103	103	-4.63%
78605	Bertram	6	6	13	116.67%
78606	Blanco	22	38	37	68.18%
78608	Briggs	0	0	1	.
78610	Buda	129	134	135	4.65%
78611	Burnet	14	13	9	-35.71%
78612	Cedar Creek	50	46	50	0.00%
78613	Cedar Park	849	942	877	3.30%
78614	Cost	1	2	1	0.00%
78615	Coupland	6	3	4	-33.33%
78616	Dale	17	23	20	17.65%
78617	Del Valle	113	128	162	43.36%
78618	Doss	4	2	4	0.00%
78619	Driftwood	21	13	12	-42.86%
78620	Dripping Springs	75	85	80	6.67%
78621	Elgin	110	98	115	4.55%
78624	Fredericksburg	158	172	161	1.90%
78626	Georgetown	95	114	102	7.37%
78628	Georgetown	191	242	231	20.94%
78629	Gonzales	9	11	5	-44.44%
78631	Harper	35	39	34	-2.86%
78634	Hutto	43	57	75	74.42%
78635	Hye	1	0	1	0.00%
78636	Johnson City	34	34	29	-14.71%
78640	Kyle	136	165	166	22.06%
78641	Leander	503	460	442	-12.13%
78642	Liberty Hill	30	28	28	-6.67%

<sup>1</sup> These numbers do not represent total enrollment for the county due to zip codes that span more than one county.

NOTES: Headcount based on zip code data as reported and entered in the ACC database. Zip code regions are based on definitions developed by ACC administration.

Source: 4th Class Day Data (Second 5½ week session)

**Headcount by Zip Code (continued)  
Summer 2005 - 2007**

Zip Code	Region	Summer 2005	Summer 2006	Summer 2007	05-07 % chg	
78644	Lockhart	Caldwell County <sup>1</sup>	74	60	71	-4.05%
78645	Leander	West Travis County	65	78	76	16.92%
78648	Luling	Caldwell County <sup>1</sup>	12	11	8	-33.33%
78650	McDade	Bastrop County <sup>1</sup>	6	8	3	-50.00%
78652	Manchaca	Austin/Travis County, South	64	41	54	-15.63%
78653	Manor	Manor/East Travis County	150	168	153	2.00%
78654	Marble Falls	Burnet County <sup>1</sup>	10	20	16	60.00%
78655	Martindale	Caldwell County <sup>1</sup>	14	12	14	0.00%
78656	Maxwell	Caldwell County <sup>1</sup>	12	4	7	-41.67%
78659	Paige	Bastrop County <sup>1</sup>	6	9	13	116.67%
78660	Pflugerville	Pflugerville/Northeast Travis County	502	562	572	13.94%
78662	Red Rock	Bastrop County <sup>1</sup>	16	12	14	-12.50%
78663	Round Mountain	Blanco County <sup>1</sup>	3	5	3	0.00%
78664	Round Rock	Round Rock	552	631	632	14.49%
78666	San Marcos	Hays County <sup>1</sup>	360	337	337	-6.39%
78669	Spicewood	West Travis County	28	34	33	17.86%
78671	Stonewall	Gillespie County <sup>1</sup>	6	3	5	-16.67%
78675	Willow City	Gillespie County <sup>1</sup>	1	1	3	200.00%
78676	Wimberley	Hays County <sup>1</sup>	42	46	40	-4.76%
78681	Round Rock	Round Rock	401	461	447	11.47%
78701	Austin	Austin, Central	129	111	95	-26.36%
78702	Austin	Austin, East	287	268	267	-6.97%
78703	Austin	Austin, Central	335	304	252	-24.78%
78704	Austin	Austin/Travis County, South	826	771	728	-11.86%
78705	Austin	Austin, Central	1,704	1,607	1,479	-13.20%
78712	Austin	Austin, Central	1	0	0	-100.00%
78717	Austin	Round Rock	197	305	277	40.61%
78719	Austin	Austin/Travis County, Southeast	13	21	25	92.31%
78721	Austin	Austin, East	128	113	98	-23.44%
78722	Austin	Austin, East	129	134	131	1.55%
78723	Austin	Austin, East	368	343	285	-22.55%
78724	Austin	Manor/East Travis County	134	140	147	9.70%
78725	Austin	Manor/East Travis County	51	58	83	62.75%
78726	Austin	Austin, Northwest	191	220	201	5.24%

<sup>1</sup> These numbers do not represent total enrollment for the county due to zip codes that span more than one county.

NOTES: Headcount based on zip code data as reported and entered in the ACC database. Zip code regions are based on definitions developed by ACC administration.

Source: 4th Class Day Data (Second 5½ week session)

Headcount by Zip Code (continued)  
Summer 2005 - 2007

Zip Code	Region	Summer 2005	Summer 2006	Summer 2007	05-07 % chg
78727	Austin	424	469	476	12.26%
78728	Austin	184	213	191	3.80%
78729	Austin	340	371	383	12.65%
78730	Austin	79	78	87	10.13%
78731	Austin	483	446	415	-14.08%
78732	Austin	80	78	98	22.50%
78733	Austin	105	119	98	-6.67%
78734	Austin	148	150	153	3.38%
78735	Austin	175	188	186	6.29%
78736	Austin	138	145	144	4.35%
78737	Austin	120	132	112	-6.67%
78738	Austin	82	109	97	18.29%
78739	Austin	214	261	274	28.04%
78741	Austin	1,411	1,521	1,423	0.85%
78742	Austin	4	10	9	125.00%
78744	Austin	441	398	427	-3.17%
78745	Austin	987	908	941	-4.66%
78746	Austin	393	418	418	6.36%
78747	Austin	132	130	122	-7.58%
78748	Austin	696	658	590	-15.23%
78749	Austin	729	695	688	-5.62%
78750	Austin	322	391	429	33.23%
78751	Austin	448	422	416	-7.14%
78752	Austin	236	194	186	-21.19%
78753	Austin	586	619	567	-3.24%
78754	Austin	161	182	175	8.70%
78756	Austin	118	113	121	2.54%
78757	Austin	362	340	314	-13.26%
78758	Austin	904	809	755	-16.48%
78759	Austin	789	706	725	-8.11%
78953	Rosanky	3	3	4	33.33%
78957	Smithville	29	26	41	41.38%
	Other/Unknown	953	1,100	2,737	187.20%
<b>GRAND TOTAL</b>		<b>21,890</b>	<b>22,303</b>	<b>23,311</b>	<b>6.49%</b>

<sup>1</sup> These numbers do not represent total enrollment for the county due to zip codes that span more than one county.

NOTES: Headcount based on zip code data as reported and entered in the ACC database. Zip code regions are based on definitions developed by ACC administration.

Source: 4th Class Day Data (Second 5½ week session)

**Student Characteristics  
Developmental Education - Reading  
Summer 2006 - 2007**

	Summer 2006		Summer 2007		06-07 % Chg
<b>Student Headcount</b>	<b>219</b>		<b>195</b>		<b>-10.96%</b>
<b>Residency</b>					
In-District	160	73.06%	138	70.77%	-13.75%
Out-of-District	47	21.46%	48	24.62%	2.13%
Out-of-State/International	7	3.20%	8	4.10%	14.29%
Other/Unknown <sup>1</sup>	5	2.28%	1	0.51%	-80.00%
<b>Gender</b>					
Male	85	38.81%	65	33.33%	-23.53%
Female	134	61.19%	130	66.67%	-2.99%
<b>Student Status</b>					
Part-time	65	29.68%	65	33.33%	0.00%
Full-time <sup>2</sup>	154	70.32%	130	66.67%	-15.58%
<b>Ethnicity</b>					
White	68	31.05%	40	20.51%	-41.18%
Hispanic	89	40.64%	78	40.00%	-12.36%
Black	38	17.35%	51	26.15%	34.21%
Asian/Pacific Islander	15	6.85%	18	9.23%	20.00%
Am. Indian/Alaskan Native	0	0.00%	1	0.51%	.
Non-Resident Alien	6	2.74%	1	0.51%	-83.33%
Other/Unknown	3	1.37%	6	3.08%	100.00%
<b>Age</b>					
16 and Under	0	0.00%	2	1.03%	.
17	5	2.28%	10	5.13%	100.00%
18	31	14.16%	28	14.36%	-9.68%
19-21	75	34.25%	68	34.87%	-9.33%
22-24	35	15.98%	32	16.41%	-8.57%
25-30	32	14.61%	22	11.28%	-31.25%
31-35	21	9.59%	17	8.72%	-19.05%
36-50	20	9.13%	13	6.67%	-35.00%
51-64	0	0.00%	2	1.03%	.
65 and Over	0	0.00%	1	0.51%	.
Unknown	0	0.00%	0	0.00%	.
Average Age	24.23	.	23.75	.	-1.98%

<sup>1</sup> Other includes students with tuition exemptions and waivers.

<sup>2</sup> Full-time - 6 credit hours or more.

NOTES: Unduplicated headcount of students who were enrolled in at least one Developmental Reading course.

Source: 4th Class Day Data (Second 5½ week session)



**Student Characteristics  
Developmental Education - Writing  
Summer 2006 - 2007**

	Summer 2006		Summer 2007		06-07 % Chg
<b>Student Headcount</b>	<b>135</b>		<b>137</b>		<b>1.48%</b>
<b>Residency</b>					
In-District	101	74.81%	114	83.21%	12.87%
Out-of-District	30	22.22%	19	13.87%	-36.67%
Out-of-State/International	3	2.22%	4	2.92%	33.33%
Other/Unknown <sup>1</sup>	1	0.74%	0	0.00%	-100.00%
<b>Gender</b>					
Male	65	48.15%	54	39.42%	-16.92%
Female	70	51.85%	83	60.58%	18.57%
<b>Student Status</b>					
Part-time	21	15.56%	45	32.85%	114.29%
Full-time <sup>2</sup>	114	84.44%	92	67.15%	-19.30%
<b>Ethnicity</b>					
White	30	22.22%	35	25.55%	16.67%
Hispanic	60	44.44%	53	38.69%	-11.67%
Black	33	24.44%	34	24.82%	3.03%
Asian/Pacific Islander	6	4.44%	8	5.84%	33.33%
Am. Indian/Alaskan Native	0	0.00%	0	0.00%	.
Non-Resident Alien	4	2.96%	1	0.73%	-75.00%
Other/Unknown	2	1.48%	6	4.38%	200.00%
<b>Age</b>					
16 and Under	2	1.48%	0	0.00%	-100.00%
17	2	1.48%	3	2.19%	50.00%
18	11	8.15%	14	10.22%	27.27%
19-21	43	31.85%	48	35.04%	11.63%
22-24	24	17.78%	22	16.06%	-8.33%
25-30	28	20.74%	28	20.44%	0.00%
31-35	11	8.15%	8	5.84%	-27.27%
36-50	11	8.15%	12	8.76%	9.09%
51-64	3	2.22%	2	1.46%	-33.33%
65 and Over	0	0.00%	0	0.00%	.
Unknown	0	0.00%	0	0.00%	.
Average Age	25.27	.	24.59	.	-2.69%

<sup>1</sup> Other includes students with tuition exemptions and waivers.

<sup>2</sup> Full-time - 6 credit hours or more.

NOTES: Unduplicated headcount of students who were enrolled in at least one Developmental Writing course.

Source: 4th Class Day Data (Second 5½ week session)

**Student Characteristics  
Developmental Education - Math  
Summer 2006 - 2007**

	Summer 2006		Summer 2007		06-07 % Chg
<b>Student Headcount</b>	<b>2,074</b>		<b>2,000</b>		<b>-3.57%</b>
<b>Residency</b>					
In-District	1,532	73.87%	1,435	71.75%	-6.33%
Out-of-District	481	23.19%	514	25.70%	6.86%
Out-of-State/International	56	2.70%	43	2.15%	-23.21%
Other/Unknown <sup>1</sup>	5	0.24%	8	0.40%	60.00%
<b>Gender</b>					
Male	756	36.45%	755	37.75%	-0.13%
Female	1,318	63.55%	1,245	62.25%	-5.54%
<b>Student Status</b>					
Part-time	780	37.61%	805	40.25%	3.21%
Full-time <sup>2</sup>	1,294	62.39%	1,195	59.75%	-7.65%
<b>Ethnicity</b>					
White	943	45.47%	970	48.50%	2.86%
Hispanic	662	31.92%	642	32.10%	-3.02%
Black	342	16.49%	263	13.15%	-23.10%
Asian/Pacific Islander	58	2.80%	67	3.35%	15.52%
Am. Indian/Alaskan Native	18	0.87%	15	0.75%	-16.67%
Non-Resident Alien	27	1.30%	19	0.95%	-29.63%
Other/Unknown	24	1.16%	24	1.20%	0.00%
<b>Age</b>					
16 and Under	12	0.58%	2	0.10%	-83.33%
17	22	1.06%	26	1.30%	18.18%
18	126	6.08%	137	6.85%	8.73%
19-21	630	30.38%	582	29.10%	-7.62%
22-24	349	16.83%	349	17.45%	0.00%
25-30	430	20.73%	448	22.40%	4.19%
31-35	212	10.22%	190	9.50%	-10.38%
36-50	257	12.39%	234	11.70%	-8.95%
51-64	36	1.74%	31	1.55%	-13.89%
65 and Over	0	0.00%	1	0.05%	.
Unknown	0	0.00%	0	0.00%	.
Average Age	26.31	.	26.10	.	-0.80%

<sup>1</sup> Other includes students with tuition exemptions and waivers.

<sup>2</sup> Full-time - 6 credit hours or more.

NOTES: Unduplicated headcount of students who were enrolled in at least one Developmental Math course.

Source: 4th Class Day Data (Second 5½ week session)

**Student Characteristics  
Developmental Education - Other<sup>1</sup>  
Summer 2006 - 2007**

	Summer 2006		Summer 2007		06-07 % Chg
<b>Student Headcount</b>	<b>89</b>		<b>110</b>		<b>23.60%</b>
<b>Residency</b>					
In-District	65	73.03%	83	75.45%	27.69%
Out-of-District	21	23.60%	25	22.73%	19.05%
Out-of-State/International	3	3.37%	1	0.91%	-66.67%
Other/Unknown <sup>2</sup>	0	0.00%	1	0.91%	.
<b>Gender</b>					
Male	36	40.45%	50	45.45%	38.89%
Female	53	59.55%	60	54.55%	13.21%
<b>Student Status</b>					
Part-time	29	32.58%	59	53.64%	103.45%
Full-time <sup>3</sup>	60	67.42%	51	46.36%	-15.00%
<b>Ethnicity</b>					
White	29	32.58%	34	30.91%	17.24%
Hispanic	39	43.82%	46	41.82%	17.95%
Black	17	19.10%	18	16.36%	5.88%
Asian/Pacific Islander	2	2.25%	10	9.09%	400.00%
Am. Indian/Alaskan Native	0	0.00%	1	0.91%	.
Non-Resident Alien	0	0.00%	0	0.00%	.
Other/Unknown	2	2.25%	1	0.91%	-50.00%
<b>Age</b>					
16 and Under	1	1.12%	2	1.82%	100.00%
17	1	1.12%	4	3.64%	300.00%
18	7	7.87%	11	10.00%	57.14%
19-21	26	29.21%	38	34.55%	46.15%
22-24	18	20.22%	23	20.91%	27.78%
25-30	17	19.10%	13	11.82%	-23.53%
31-35	10	11.24%	11	10.00%	10.00%
36-50	9	10.11%	6	5.45%	-33.33%
51-64	0	0.00%	1	0.91%	.
65 and Over	0	0.00%	1	0.91%	.
Unknown	0	0.00%	0	0.00%	.
Average Age	25.33	.	23.93	.	-5.53%

<sup>1</sup> Other includes human development and study skills.

<sup>2</sup> Other includes students with tuition exemptions and waivers.

<sup>3</sup> Full-time - 6 credit hours or more.

NOTES: Unduplicated headcount of students who were enrolled in at least one Developmental Other<sup>1</sup> course.

Source: 4th Class Day Data (Second 5½ week session)

THIS PAGE INTENTIONALLY LEFT BLANK

**Student Characteristics  
District-wide  
Fall 2003 - 2007**

	Fall 2003	Fall 2004	Fall 2005	Fall 2006	Fall 2007	03-07 % chg
<b>Student Headcount</b>	<b>30,203</b>	<b>30,439</b>	<b>31,908</b>	<b>33,039</b>	<b>33,508</b>	<b>10.94%</b>
<b>Credit Hours</b>	239,234	240,957	253,569	262,355	267,284	11.72%
<b>Average Credit Hours</b>	7.92	7.92	7.90	7.90	8.00	1.00%
<b>Contact Hours</b>	4,609,320	4,615,496	4,832,704	5,016,656	5,123,072	11.15%
<b>Average Contact Hours</b>	152.61	151.63	151.50	151.80	152.90	0.19%
<b>Full-time Student Equivalent (FTSE)<sup>1</sup></b>	15,949	16,064	16,905	17,490	17,819	11.72%
<b>Residency</b>						
In-District	20,399 67.54%	21,177 69.57%	23,266 72.92%	23,533 71.23%	23,542 70.26%	15.41%
Out-of-District	8,834 29.25%	8,358 27.46%	7,719 24.19%	8,502 25.73%	9,081 27.10%	2.80%
Out-of-State/International	453 1.50%	527 1.73%	575 1.80%	689 2.09%	573 1.71%	26.49%
Other/Unknown <sup>2</sup>	517 1.71%	377 1.24%	348 1.09%	315 0.95%	312 0.93%	-39.65%
<b>Gender</b>						
Male	13,186 43.66%	13,293 43.67%	13,831 43.35%	14,498 43.88%	14,434 43.08%	9.46%
Female	17,017 56.34%	17,146 56.33%	18,077 56.65%	18,541 56.12%	19,074 56.92%	12.09%
<b>Student Status</b>						
Part-time	21,962 72.71%	22,074 72.52%	23,063 72.28%	23,821 72.10%	24,276 72.45%	10.54%
Full-time <sup>3</sup>	8,241 27.29%	8,154 26.79%	8,818 27.64%	9,218 27.90%	9,232 27.55%	12.03%
<b>Ethnicity</b>						
White	18,292 60.56%	18,380 60.38%	19,097 59.85%	19,467 58.92%	19,810 59.12%	8.30%
Hispanic	6,596 21.84%	6,822 22.41%	7,456 23.37%	8,014 24.26%	7,897 23.57%	19.72%
Black	2,133 7.06%	2,194 7.21%	2,383 7.47%	2,557 7.74%	2,689 8.02%	26.07%
Asian/Pacific Islander	1,603 5.31%	1,600 5.26%	1,596 5.00%	1,598 4.84%	1,780 5.31%	11.04%
Am. Indian/Alaskan Native	263 0.87%	237 0.78%	231 0.72%	294 0.89%	293 0.87%	11.41%
Non-Resident Alien	731 2.42%	694 2.28%	652 2.04%	661 2.00%	558 1.67%	-23.67%
Other/Unknown	585 1.94%	512 1.68%	493 1.55%	448 1.36%	481 1.44%	-17.78%
<b>Age</b>						
16 and Under	399 1.32%	485 1.59%	620 1.94%	844 2.55%	859 2.56%	115.29%
17	1,102 3.65%	1,118 3.67%	1,382 4.33%	1,415 4.28%	1,655 4.94%	50.18%
18	2,510 8.31%	2,557 8.40%	2,840 8.90%	3,104 9.39%	3,197 9.54%	27.37%
19-21	9,097 30.12%	9,005 29.58%	9,300 29.15%	9,586 29.01%	9,809 29.27%	7.83%
22-24	5,212 17.26%	5,306 17.43%	5,428 17.01%	5,370 16.25%	5,273 15.74%	1.17%
25-30	5,365 17.76%	5,485 18.02%	5,636 17.66%	5,907 17.88%	5,861 17.49%	9.25%
31-35	2,533 8.39%	2,516 8.27%	2,518 7.89%	2,533 7.67%	2,489 7.43%	-1.74%
36-50	3,353 11.10%	3,285 10.79%	3,444 10.79%	3,501 10.60%	3,558 10.62%	6.11%
51-64	575 1.90%	627 2.06%	673 2.11%	703 2.13%	715 2.13%	24.35%
65 and Over	57 0.19%	55 0.18%	67 0.21%	76 0.23%	85 0.25%	49.12%
Unknown	0 0.00%	0 0.00%	0 0.00%	0 0.00%	7 0.02%	.
Average Age	25.70	25.60	25.50	25.40	25.30	-1.56%

<sup>1</sup> Full-time Student Equivalent (FTSE) is based on 15 SCH. Fact Books prior to Fall 2004 calculated FTSE based on 12 SCH. To standardize reporting with that of the THECB, calculations are now based on 15 SCH.

<sup>2</sup> Other includes students with tuition exemptions and waivers.

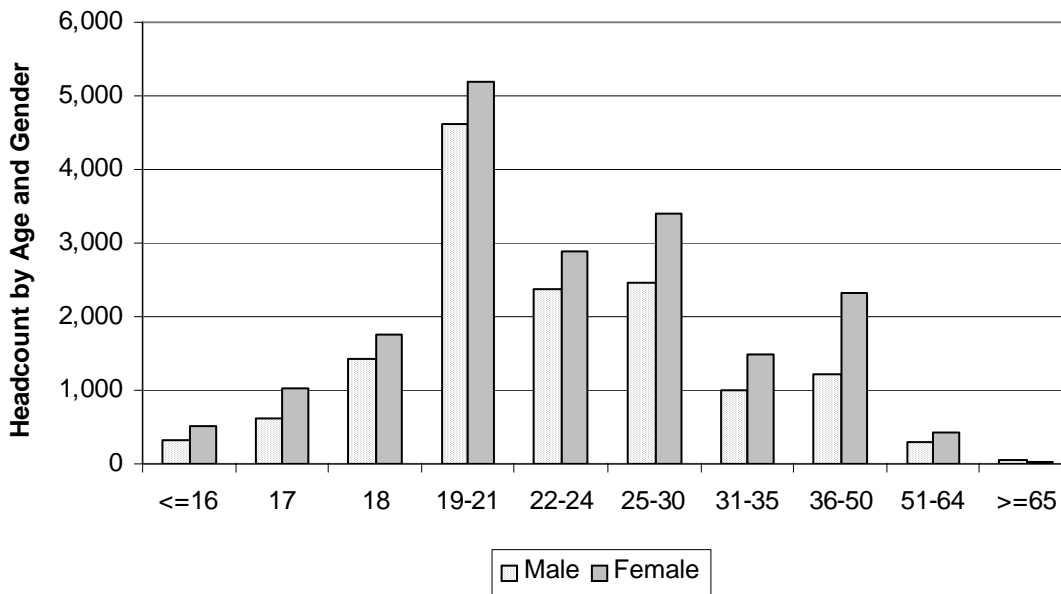
<sup>3</sup> Full-time - 12 credit hours or more.

NOTE: Percents may not add to 100 due to rounding.

Source: Fall 12th Class Day Data

### Student Characteristics Headcount by Age and Gender Fall 2007

Age	Male		Female		Total	
16 and Under	335	2.32%	524	2.75%	859	2.56%
17	635	4.40%	1,020	5.35%	1,655	4.94%
18	1,436	9.95%	1,761	9.23%	3,197	9.54%
19-21	4,619	32.00%	5,190	27.21%	9,809	29.27%
22-24	2,378	16.47%	2,895	15.18%	5,273	15.74%
25-30	2,467	17.09%	3,394	17.79%	5,861	17.49%
31-35	1,005	6.96%	1,484	7.78%	2,489	7.43%
36-50	1,222	8.47%	2,336	12.25%	3,558	10.62%
51-64	288	2.00%	427	2.24%	715	2.13%
65 and Over	45	0.31%	40	0.21%	85	0.25%
Unknown	4	0.03%	3	0.02%	7	0.02%
<b>TOTAL</b>	<b>14,434</b>	<b>100.00%</b>	<b>19,074</b>	<b>100.00%</b>	<b>33,508</b>	<b>100.00%</b>

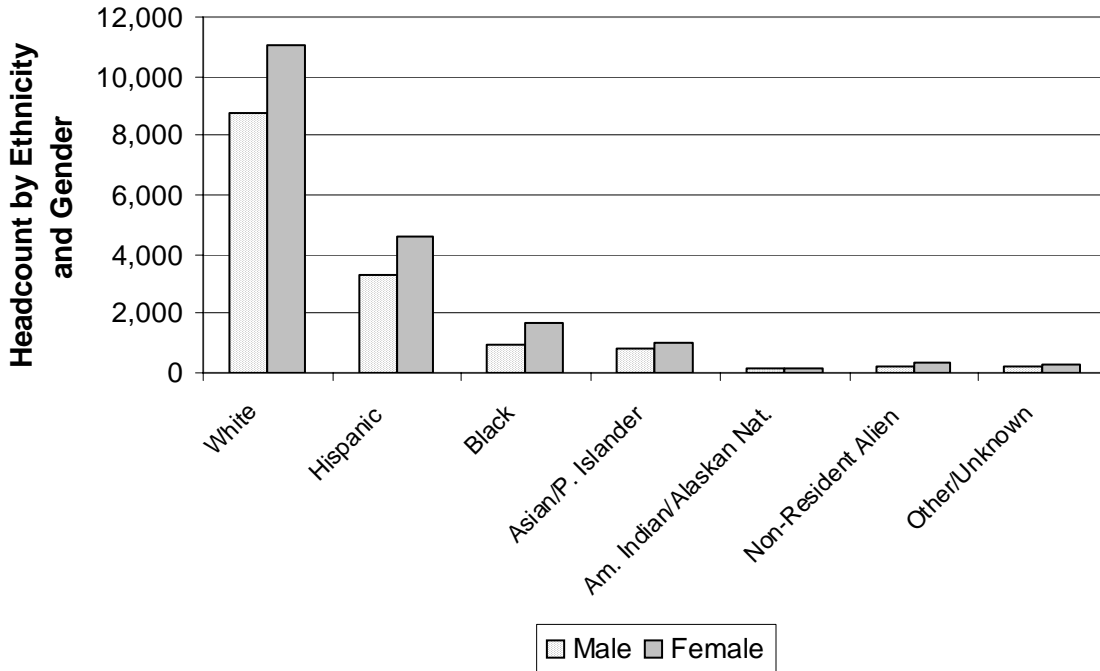


NOTE: Percents may not add to 100 due to rounding.

Source: Fall 12th Class Day Data

**Student Characteristics  
Headcount by Ethnicity and Gender  
Fall 2007**

Ethnicity	Male		Female		Total	
<b>White</b>	8,755	60.66%	11,055	57.96%	19,810	59.12%
<b>Hispanic</b>	3,333	23.09%	4,564	23.93%	7,897	23.57%
<b>Black</b>	973	6.74%	1,716	9.00%	2,689	8.02%
<b>Asian/Pacific Islander</b>	797	5.52%	983	5.15%	1,780	5.31%
<b>Am. Indian/Alaskan Native</b>	153	1.06%	140	0.73%	293	0.87%
<b>Non-Resident Alien</b>	230	1.59%	328	1.72%	558	1.67%
<b>Other/Unknown</b>	193	1.34%	288	1.51%	481	1.44%
<b>TOTAL</b>	<b>14,434</b>	<b>100.00%</b>	<b>19,074</b>	<b>100.00%</b>	<b>33,508</b>	<b>100.00%</b>



NOTE: Percents may not add to 100 due to rounding.

Source: Fall 12th Class Day Data

**Student Characteristics  
Headcount by Gender and Full/Part-time Status  
Fall 2007**

<b>Gender</b>	<b>Full-time</b>		<b>Part-time</b>		<b>Total</b>	
<b>Male</b>	4,562	49.42%	9,872	40.67%	14,434	43.08%
<b>Female</b>	4,670	50.58%	14,404	59.33%	19,074	56.92%
<b>TOTAL</b>	<b>9,232</b>	<b>100.00%</b>	<b>24,276</b>	<b>100.00%</b>	<b>33,508</b>	<b>100.00%</b>

**Student Characteristics  
Headcount by Ethnicity and Full/Part-time Status  
Fall 2007**

<b>Ethnicity</b>	<b>Full-time</b>		<b>Part-time</b>		<b>Total</b>	
<b>White</b>	5,753	62.32%	14,057	57.90%	19,810	59.12%
<b>Hispanic</b>	1,945	21.07%	5,952	24.52%	7,897	23.57%
<b>Black</b>	591	6.40%	2,098	8.64%	2,689	8.02%
<b>Asian/Pacific Islander</b>	508	5.50%	1,272	5.24%	1,780	5.31%
<b>Am. Indian/Alaskan Native</b>	87	0.94%	206	0.85%	293	0.87%
<b>Non-Resident Alien</b>	238	2.58%	320	1.32%	558	1.67%
<b>Other/Unknown</b>	110	1.19%	371	1.53%	481	1.44%
<b>TOTAL</b>	<b>9,232</b>	<b>100.00%</b>	<b>24,276</b>	<b>100.00%</b>	<b>33,508</b>	<b>100.00%</b>

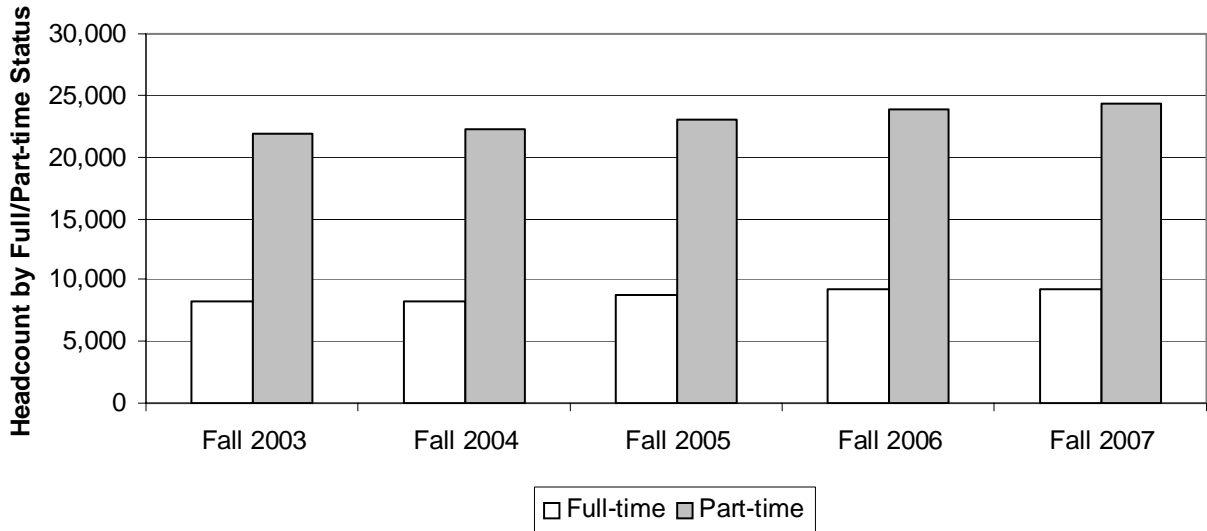
NOTE: Percents may not add to 100 due to rounding.

Source: Fall 12th Class Day Data



**Student Characteristics  
Headcount by Full/Part-time Status  
Fall 2003 - 2007**

	Fall 2003	Fall 2004	Fall 2005	Fall 2006	Fall 2007	03-07 % chg
<b>FULL-TIME STUDENTS<sup>1</sup></b>						
<b>Headcount</b>	8,241	8,247	8,829	9,218	9,232	12.03%
% of Total	27.29%	27.09%	27.67%	27.90%	27.55%	
<b>Average Hours Attempted</b>	13.10	13.10	13.00	13.00	13.06	-0.31%
<b>PART-TIME STUDENTS<sup>2</sup></b>						
<b>Headcount</b>	21,962	22,192	23,079	23,821	24,276	10.54%
% of Total	72.71%	72.91%	72.33%	72.10%	72.45%	
<b>Average Hours Attempted</b>	6.00	6.00	6.00	6.00	6.05	0.83%
<b>TOTAL HEADCOUNT</b>	<b>30,203</b>	<b>30,439</b>	<b>31,908</b>	<b>33,039</b>	<b>33,508</b>	10.94%



<sup>1</sup> Full-time students are those enrolled in 12 or more semester credit hours

<sup>2</sup> Part-time students are those enrolled in less than 12 semester credit hours.

NOTE: Percents may not add to 100 due to rounding.

Source: Fall 12th Class Day Data

**Student Characteristics  
Headcount by Day/Evening Classification  
Fall 2003 - 2007**

Classification	Fall 2003	Fall 2004	Fall 2005	Fall 2006	Fall 2007	03-07 %chg
<b>Day</b>	14,241	14,229	15,367	15,927	16,089	12.98%
<b>% of Total</b>	47.15%	46.75%	48.16%	48.21%	48.02%	
<b>Evening</b>	4,676	4,407	4,529	4,640	4,319	-7.63%
<b>% of Total</b>	15.48%	14.48%	14.19%	14.04%	12.89%	
<b>Telecommunicated</b>	2,207	2,360	2,518	2,569	2,926	32.58%
<b>% of Total</b>	7.31%	7.75%	7.89%	7.78%	8.73%	
<b>Day &amp; Evening</b>	5,608	5,713	5,790	6,023	6,155	9.75%
<b>% of Total</b>	18.57%	18.77%	18.15%	18.23%	18.37%	
<b>Day &amp; Telecommunicated</b>	1,856	1,992	2,027	2,211	2,232	20.26%
<b>% of Total</b>	6.15%	6.54%	6.35%	6.69%	6.66%	
<b>Evening &amp; Telecommunicated</b>	844	874	820	866	953	12.91%
<b>% of Total</b>	2.79%	2.87%	2.57%	2.62%	2.84%	
<b>Day &amp; Evening &amp; Telecommunicated</b>	672	739	686	700	761	13.24%
<b>% of Total</b>	2.22%	2.43%	2.15%	2.12%	2.27%	
<b>Non-identifiable</b>	99	125	171	103	73	-26.26%
<b>% of Total</b>	0.33%	0.41%	0.54%	0.31%	0.22%	
<b>Total</b>	<b>30,203</b>	<b>30,439</b>	<b>31,908</b>	<b>33,039</b>	<b>33,508</b>	<b>10.94%</b>

NOTES: Classifications are mutually exclusive. Day students are enrolled in courses that begin before 5:30 PM and evening students are enrolled in courses that begin at or after 5:30 PM. The "Non-identifiable" category includes self-paced courses and courses without designated meeting times. Percents may not add to 100 due to rounding.

Source: Fall 12th Class Day Data

**Headcount by Region and Zip Code  
Fall 2003 - 2007**

Region	Zip Code	Fall 2003	Fall 2004	Fall 2005	Fall 2006	Fall 2007	03-07 % chg
<b>Austin, Central</b>							
Austin	78701	122	112	140	127	109	-10.66%
Austin	78703	384	404	389	369	342	-10.94%
Austin	78705	1,002	1,014	940	918	949	-5.29%
Austin	78712	0	0	1	0	1	.
Austin	78751	489	501	507	515	480	-1.84%
Austin	78752	432	370	338	349	329	-23.84%
Austin	78756	236	190	170	190	193	-18.22%
Austin	78757	598	587	588	556	522	-12.71%
<b>Total</b>		<b>3,263</b>	<b>3,178</b>	<b>3,073</b>	<b>3,024</b>	<b>2,925</b>	<b>-10.36%</b>
<b>% of Grand Total</b>		<b>10.80%</b>	<b>10.44%</b>	<b>9.63%</b>	<b>9.15%</b>	<b>8.73%</b>	
<b>Austin, East</b>							
Austin	78702	439	447	479	460	480	9.34%
Austin	78721	185	184	198	182	194	4.86%
Austin	78722	181	186	198	185	187	3.31%
Austin	78723	614	618	557	533	507	-17.43%
<b>Total</b>		<b>1,419</b>	<b>1,435</b>	<b>1,432</b>	<b>1,360</b>	<b>1,368</b>	<b>-3.59%</b>
<b>% of Grand Total</b>		<b>4.70%</b>	<b>4.71%</b>	<b>4.49%</b>	<b>4.12%</b>	<b>4.08%</b>	
<b>Austin, North</b>							
Austin	78727	695	676	686	763	751	8.06%
Austin	78728	329	308	336	327	337	2.43%
Austin	78758	1,524	1,469	1,456	1,381	1,444	-5.25%
<b>Total</b>		<b>2,548</b>	<b>2,453</b>	<b>2,478</b>	<b>2,471</b>	<b>2,532</b>	<b>-0.63%</b>
<b>% of Grand Total</b>		<b>8.44%</b>	<b>8.06%</b>	<b>7.77%</b>	<b>7.48%</b>	<b>7.56%</b>	
<b>Austin, Northwest</b>							
Austin	78726	260	323	325	312	304	16.92%
Austin	78730	101	110	102	120	98	-2.97%
Austin	78731	560	507	541	501	503	-10.18%
Austin	78750	424	382	414	439	463	9.20%
Austin	78759	1,142	1,019	1,046	930	975	-14.62%
<b>Total</b>		<b>2,487</b>	<b>2,341</b>	<b>2,428</b>	<b>2,302</b>	<b>2,343</b>	<b>-5.79%</b>
<b>% of Grand Total</b>		<b>8.23%</b>	<b>7.69%</b>	<b>7.61%</b>	<b>6.97%</b>	<b>6.99%</b>	

NOTES: Headcount based on zip code data as reported and entered in the ACC database. Zip code regions are based on definitions developed by ACC administration.

Source: Fall 12th Class Day Data

**Headcount by Region and Zip Code (continued)  
Fall 2003 - 2007**

Region	Zip Code	Fall 2003	Fall 2004	Fall 2005	Fall 2006	Fall 2007	03-07 % chg
<b>Austin/Travis County, South</b>							
Manchaca	78652	93	100	97	115	88	-5.38%
Austin	78704	1,275	1,302	1,317	1,237	1,134	-11.06%
Austin	78745	1,683	1,743	1,722	1,791	1,756	4.34%
Austin	78748	1,036	1,045	1,045	1,121	1166	12.55%
<b>Total</b>		<b>4,087</b>	<b>4,190</b>	<b>4,181</b>	<b>4,264</b>	<b>4,144</b>	<b>1.39%</b>
<b>% of Grand Total</b>		<b>13.53%</b>	<b>13.77%</b>	<b>13.10%</b>	<b>12.91%</b>	<b>12.37%</b>	
<b>Austin/Travis County, Southeast</b>							
Del Valle	78617	98	153	205	264	265	170.41%
Austin	78719	19	27	27	26	30	57.89%
Austin	78741	1,388	1,702	2,010	2,114	2,006	44.52%
Austin	78742	5	12	15	14	18	260.00%
Austin	78744	681	721	838	883	869	27.61%
Austin	78747	162	217	207	225	259	59.88%
<b>Total</b>		<b>2,353</b>	<b>2,832</b>	<b>3,302</b>	<b>3,526</b>	<b>3,447</b>	<b>46.49%</b>
<b>% of Grand Total</b>		<b>7.79%</b>	<b>9.30%</b>	<b>10.35%</b>	<b>10.67%</b>	<b>10.29%</b>	
<b>Austin/Travis County, Southwest</b>							
Austin	78735	245	271	265	259	257	4.90%
Austin	78736	235	218	218	234	240	2.13%
Austin	78739	213	241	280	296	328	53.99%
Austin	78746	353	309	317	353	355	0.57%
Austin	78749	1,116	1,120	1,086	1,044	1,064	-4.66%
<b>Total</b>		<b>2,162</b>	<b>2,159</b>	<b>2,166</b>	<b>2,186</b>	<b>2,244</b>	<b>3.79%</b>
<b>% of Grand Total</b>		<b>7.16%</b>	<b>7.09%</b>	<b>6.79%</b>	<b>6.62%</b>	<b>6.70%</b>	

NOTES: Headcount based on zip code data as reported and entered in the ACC database. Zip code regions are based on definitions developed by ACC administration.

Source: Fall 12th Class Day Data

Headcount by Region and Zip Code (continued)  
Fall 2003 - 2007

Region	Zip Code	Fall 2003	Fall 2004	Fall 2005	Fall 2006	Fall 2007	03-07 % chg
<b>Bastrop County<sup>1</sup></b>							
Bastrop	78602	161	153	170	179	225	39.75%
Cedar Creek	78612	62	81	80	93	110	77.42%
Elgin	78621	154	136	146	168	183	18.83%
McDade	78650	11	9	9	14	8	-27.27%
Paige	78659	14	15	14	25	17	21.43%
Red Rock	78662	10	14	31	27	23	130.00%
Rosanky	78953	6	6	6	7	7	16.67%
Smithville	78957	39	53	46	50	65	66.67%
<b>Total</b>		<b>457</b>	<b>467</b>	<b>502</b>	<b>563</b>	<b>638</b>	<b>39.61%</b>
<b>% of Grand Total</b>		<b>1.51%</b>	<b>1.53%</b>	<b>1.57%</b>	<b>1.70%</b>	<b>1.90%</b>	
<b>Blanco County<sup>1</sup></b>							
Blanco	78606	15	16	35	36	28	86.67%
Hye	78635	2	2	2	3	0	.
Johnson City	78636	20	26	29	33	38	90.00%
Round Mountain	78663	1	5	3	8	9	800.00%
<b>Total</b>		<b>38</b>	<b>49</b>	<b>69</b>	<b>80</b>	<b>75</b>	<b>97.37%</b>
<b>% of Grand Total</b>		<b>0.13%</b>	<b>0.16%</b>	<b>0.22%</b>	<b>0.24%</b>	<b>0.22%</b>	
<b>Burnet County<sup>1</sup></b>							
Bertram	78605	13	9	14	11	17	30.77%
Briggs	78608	1	0	0	0	2	100.00%
Burnet	78611	22	24	29	22	21	-4.55%
Marble Falls	78654	59	45	30	42	36	-38.98%
<b>Total</b>		<b>95</b>	<b>78</b>	<b>73</b>	<b>75</b>	<b>76</b>	<b>-20.00%</b>
<b>% of Grand Total</b>		<b>0.31%</b>	<b>0.26%</b>	<b>0.23%</b>	<b>0.23%</b>	<b>0.23%</b>	

<sup>1</sup> These numbers do not represent total enrollment for the county due to zip codes that span more than one county.

NOTES: Headcount based on zip code data as reported and entered in the ACC database. Zip code regions are based on definitions developed by ACC administration.

Source: Fall 12th Class Day Data

**Headcount by Region and Zip Code (continued)  
Fall 2003 - 2007**

Region	Zip Code	Fall 2003	Fall 2004	Fall 2005	Fall 2006	Fall 2007	03-07 % chg
<b>Caldwell County<sup>1</sup></b>							
Dale	78616	42	42	54	54	72	71.43%
Lockhart	78644	142	156	186	227	215	51.41%
Luling	78648	37	42	59	39	55	48.65%
Martindale	78655	32	30	26	34	24	-25.00%
Maxwell	78656	14	21	26	27	22	57.14%
<b>Total</b>		<b>267</b>	<b>291</b>	<b>351</b>	<b>381</b>	<b>388</b>	<b>45.32%</b>
<b>% of Grand Total</b>		<b>0.88%</b>	<b>0.96%</b>	<b>1.10%</b>	<b>1.15%</b>	<b>1.16%</b>	
<b>Cedar Park/Leander</b>							
Cedar Park	78613	1,231	1,264	1,480	1,466	1,602	30.14%
Leander	78641	748	795	884	874	981	31.15%
Liberty Hill	78642	75	87	115	133	142	89.33%
<b>Total</b>		<b>2,054</b>	<b>2,146</b>	<b>2,479</b>	<b>2,473</b>	<b>2,725</b>	<b>32.67%</b>
<b>% of Grand Total</b>		<b>6.80%</b>	<b>7.05%</b>	<b>7.77%</b>	<b>7.49%</b>	<b>8.13%</b>	
<b>Georgetown/North Williamson County</b>							
Florence	76527	16	9	6	15	18	12.50%
Granger	76530	5	5	3	8	9	80.00%
Jarrell	76537	19	19	45	43	41	115.79%
Georgetown	78626	181	167	204	226	221	22.10%
Georgetown	78628	344	315	346	369	406	18.02%
<b>Total</b>		<b>565</b>	<b>515</b>	<b>604</b>	<b>661</b>	<b>695</b>	<b>23.01%</b>
<b>% of Grand Total</b>		<b>1.87%</b>	<b>1.69%</b>	<b>1.89%</b>	<b>2.00%</b>	<b>2.07%</b>	
<b>Gillespie County<sup>1</sup></b>							
Doss	78618	1	2	4	2	5	400.00%
Fredericksburg	78624	148	140	113	120	110	-25.68%
Harper	78631	15	33	32	34	31	106.67%
Stonewall	78671	5	3	2	3	0	.
Willow City	78675	1	1	1	0	1	0.00%
<b>Total</b>		<b>170</b>	<b>179</b>	<b>152</b>	<b>159</b>	<b>147</b>	<b>-13.53%</b>
<b>% of Grand Total</b>		<b>0.56%</b>	<b>0.59%</b>	<b>0.48%</b>	<b>0.48%</b>	<b>0.44%</b>	

<sup>1</sup> These numbers do not represent total enrollment for the county due to zip codes that span more than one county.

NOTES: Headcount based on zip code data as reported and entered in the ACC database. Zip code regions are based on definitions developed by ACC administration.

Source: Fall 12th Class Day Data

### Headcount by Region and Zip Code (continued) Fall 2003 - 2007

Region	Zip Code	Fall 2003	Fall 2004	Fall 2005	Fall 2006	Fall 2007	03-07 % chg
<b>Gonzales County</b>							
Leesville	78122	0	1	1	1	3	.
Nixon	78140	13	11	13	12	22	69.23%
Smiley	78159	5	2	3	6	5	0.00%
Cost	78614	2	3	4	3	1	-50.00%
Gonzales	78629	22	15	21	16	14	-36.36%
<b>Total</b>		<b>42</b>	<b>32</b>	<b>42</b>	<b>38</b>	<b>45</b>	<b>7.14%</b>
<b>% of Grand Total</b>		<b>0.14%</b>	<b>0.11%</b>	<b>0.13%</b>	<b>0.12%</b>	<b>0.13%</b>	
<b>Hays County<sup>1</sup></b>							
Buda	78610	190	194	205	223	254	33.68%
Driftwood	78619	12	18	21	19	21	75.00%
Dripping Springs	78620	136	147	160	136	157	15.44%
Kyle	78640	223	207	277	323	394	76.68%
San Marcos	78666	582	608	584	648	699	20.10%
Wimberley	78676	105	109	127	123	190	80.95%
Austin	78737	135	151	185	175	169	25.19%
<b>Total</b>		<b>1,383</b>	<b>1,434</b>	<b>1,559</b>	<b>1,647</b>	<b>1,884</b>	<b>36.23%</b>
<b>% of Grand Total</b>		<b>4.58%</b>	<b>4.71%</b>	<b>4.89%</b>	<b>4.99%</b>	<b>5.62%</b>	
<b>Manor/East Travis County</b>							
Manor	78653	156	193	227	258	309	98.08%
Austin	78724	210	226	226	225	246	17.14%
Austin	78725	55	65	89	105	115	109.09%
<b>Total</b>		<b>421</b>	<b>484</b>	<b>542</b>	<b>588</b>	<b>670</b>	<b>59.14%</b>
<b>% of Grand Total</b>		<b>1.39%</b>	<b>1.59%</b>	<b>1.70%</b>	<b>1.78%</b>	<b>2.00%</b>	
<b>Pflugerville/Northeast Travis County</b>							
Pflugerville	78660	620	619	678	778	873	40.81%
Austin	78753	954	930	996	1,003	1,008	5.66%
Austin	78754	179	230	260	287	317	77.09%
<b>Total</b>		<b>1,753</b>	<b>1,779</b>	<b>1,934</b>	<b>2,068</b>	<b>2,198</b>	<b>25.39%</b>
<b>% of Grand Total</b>		<b>5.80%</b>	<b>5.84%</b>	<b>6.06%</b>	<b>6.26%</b>	<b>6.56%</b>	

<sup>1</sup> These numbers do not represent total enrollment for the county due to zip codes that span more than one county.

NOTES: Headcount based on zip code data as reported and entered in the ACC database. Zip code regions are based on definitions developed by ACC administration.

Source: Fall 12th Class Day Data

**Headcount by Region and Zip Code (continued)  
Fall 2003 - 2007**

<b>Region</b>	<b>Zip Code</b>	<b>Fall 2003</b>	<b>Fall 2004</b>	<b>Fall 2005</b>	<b>Fall 2006</b>	<b>Fall 2007</b>	<b>03-07 % chg</b>
<b>Round Rock</b>							
Round Rock	78664	675	778	888	952	1013	50.07%
Round Rock	78681	529	565	544	584	603	13.99%
Austin	78717	189	231	278	358	357	88.89%
Austin	78729	427	434	497	474	544	27.40%
<b>Total</b>		<b>1,820</b>	<b>2,008</b>	<b>2,207</b>	<b>2,368</b>	<b>2,517</b>	<b>38.30%</b>
<b>% of Grand Total</b>		<b>6.03%</b>	<b>6.60%</b>	<b>6.92%</b>	<b>7.17%</b>	<b>7.51%</b>	
<b>Taylor/Hutto/East Williamson County</b>							
Taylor	76574	43	40	33	26	36	-16.28%
Thrall	76578	3	0	3	3	2	-33.33%
Coupland	78615	10	9	3	5	5	-50.00%
Hutto	78634	75	87	93	118	171	128.00%
<b>Total</b>		<b>131</b>	<b>136</b>	<b>132</b>	<b>152</b>	<b>214</b>	<b>63.36%</b>
<b>% of Grand Total</b>		<b>0.43%</b>	<b>0.45%</b>	<b>0.41%</b>	<b>0.46%</b>	<b>0.64%</b>	
<b>West Travis County</b>							
Leander	78645	99	126	121	147	144	45.45%
Spicewood	78669	58	64	41	60	53	-8.62%
Austin	78732	79	83	105	114	148	87.34%
Austin	78733	88	86	79	77	81	-7.95%
Austin	78734	173	201	191	201	181	4.62%
Austin	78738	73	107	87	93	109	49.32%
<b>Total</b>		<b>570</b>	<b>667</b>	<b>624</b>	<b>692</b>	<b>716</b>	<b>25.61%</b>
<b>% of Grand Total</b>		<b>1.89%</b>	<b>2.19%</b>	<b>1.96%</b>	<b>2.09%</b>	<b>2.14%</b>	
<b>Other/Unknown</b>		<b>2,118</b>	<b>1,586</b>	<b>1,578</b>	<b>1,961</b>	<b>1,517</b>	<b>-28.38%</b>
<b>Total</b>		<b>2,118</b>	<b>1,586</b>	<b>1,578</b>	<b>1,961</b>	<b>1,517</b>	<b>-28.38%</b>
<b>% of Grand Total</b>		<b>7.01%</b>	<b>5.21%</b>	<b>4.95%</b>	<b>5.94%</b>	<b>4.53%</b>	
<b>GRAND TOTAL</b>		<b>30,203</b>	<b>30,439</b>	<b>31,908</b>	<b>33,039</b>	<b>33,508</b>	<b>10.94%</b>

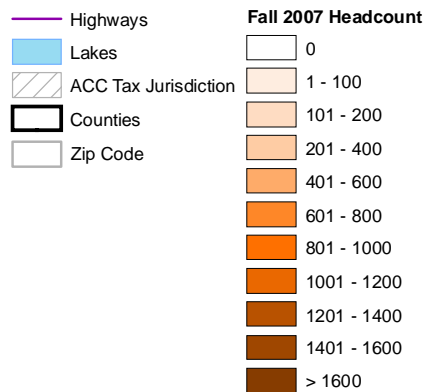
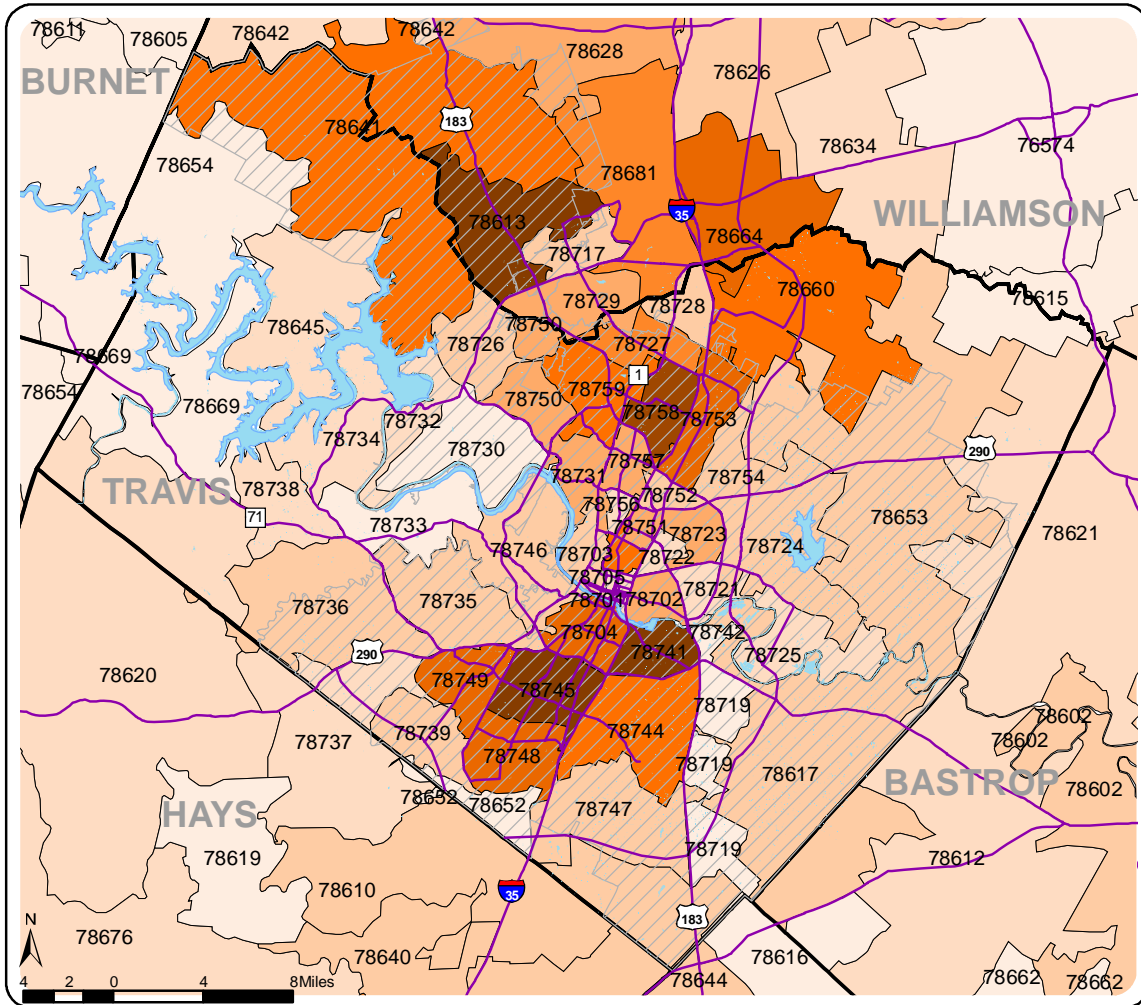
NOTES: Headcount based on zip code data as reported and entered in the ACC database. Zip code regions are based on definitions developed by ACC administration.

Source: Fall 12th Class Day Data



## Austin Community College Headcount by Zip Code Map Fall 2007

The shaded areas represent the zip code boundaries for data shown on the previous pages.



NOTE: Headcount based on zip code data as reported and entered in the ACC database.

Source: Fall 12th Class Day Data

Headcount by Zip Code  
Fall 2003 - 2007

Zip Code	Region	Fall 2003	Fall 2004	Fall 2005	Fall 2006	Fall 2007	03-07 % chg
76527	Florence	16	9	6	15	18	12.50%
76530	Granger	5	5	3	8	9	80.00%
76537	Jarrell	19	19	45	43	41	115.79%
76574	Taylor	43	40	33	26	36	-16.28%
76578	Thrall	3	0	3	3	2	-33.33%
78122	Leesville	0	1	1	1	3	.
78140	Nixon	13	11	13	12	22	69.23%
78159	Smiley	5	2	3	6	5	0.00%
78602	Bastrop	161	153	170	179	225	39.75%
78605	Bertram	13	9	14	11	17	30.77%
78606	Blanco	15	16	35	36	28	86.67%
78608	Briggs	1	0	0	0	2	100.00%
78610	Buda	190	194	205	223	254	33.68%
78611	Burnet	22	24	29	22	21	-4.55%
78612	Cedar Creek	62	81	80	93	110	77.42%
78613	Cedar Park	1,231	1,264	1,480	1,466	1,602	30.14%
78614	Cost	2	3	4	3	1	-50.00%
78615	Coupland	10	9	3	5	5	-50.00%
78616	Dale	42	42	54	54	72	71.43%
78617	Del Valle	98	153	205	264	265	170.41%
78618	Doss	1	2	4	2	5	400.00%
78619	Driftwood	12	18	21	19	21	75.00%
78620	Dripping Springs	136	147	160	136	157	15.44%
78621	Elgin	154	136	146	168	183	18.83%
78624	Fredericksburg	148	140	113	120	110	-25.68%
78626	Georgetown	181	167	204	226	221	22.10%
78628	Georgetown	344	315	346	369	406	18.02%
78629	Gonzales	22	15	21	16	14	-36.36%
78631	Harper	15	33	32	34	31	106.67%
78634	Hutto	75	87	93	118	171	128.00%
78635	Hye	2	2	2	3	0	.
78636	Johnson City	20	26	29	33	38	90.00%
78640	Kyle	223	207	277	323	394	76.68%
78641	Leander	748	795	884	874	981	31.15%
78642	Liberty Hill	75	87	115	133	142	89.33%
78644	Lockhart	142	156	186	227	215	51.41%
78645	Leander	99	126	121	147	144	45.45%
78648	Luling	37	42	59	39	55	48.65%
78650	McDade	11	9	9	14	8	-27.27%

<sup>1</sup> These numbers do not represent total enrollment for the county due to zip codes that span more than one county.

NOTES: Headcount based on zip code data as reported and entered in the ACC database. Zip code regions are based on definitions developed by ACC administration.

Source: Fall 12th Class Day Data

**Headcount by Zip Code (continued)  
Fall 2003 - 2007**

Zip Code	Region	Fall 2003	Fall 2004	Fall 2005	Fall 2006	Fall 2007	03-07 % chg
78652	Manchaca	93	100	97	115	88	-5.38%
78653	Manor	156	193	227	258	309	98.08%
78654	Marble Falls	59	45	30	42	36	-38.98%
78655	Martindale	32	30	26	34	24	-25.00%
78656	Maxwell	14	21	26	27	22	57.14%
78659	Paige	14	15	14	25	17	21.43%
78660	Pflugerville	620	619	678	778	873	40.81%
78662	Red Rock	10	14	31	27	23	130.00%
78663	Round Mountain	1	5	3	8	9	800.00%
78664	Round Rock	675	778	888	952	1013	50.07%
78666	San Marcos	582	608	584	648	699	20.10%
78669	Spicewood	58	64	41	60	53	-8.62%
78671	Stonewall	5	3	2	3	0	.
78675	Willow City	1	1	1	0	1	0.00%
78676	Wimberley	105	109	127	123	190	80.95%
78681	Round Rock	529	565	544	584	603	13.99%
78701	Austin	122	112	140	127	109	-10.66%
78702	Austin	439	447	479	460	480	9.34%
78703	Austin	384	404	389	369	342	-10.94%
78704	Austin	1,275	1,302	1,317	1,237	1,134	-11.06%
78705	Austin	1,002	1,014	940	918	949	-5.29%
78712	Austin	0	0	1	0	1	.
78717	Austin	189	231	278	358	357	88.89%
78719	Austin	19	27	27	26	30	57.89%
78721	Austin	185	184	198	182	194	4.86%
78722	Austin	181	186	198	185	187	3.31%
78723	Austin	614	618	557	533	507	-17.43%
78724	Austin	210	226	226	225	246	17.14%
78725	Austin	55	65	89	105	115	109.09%
78726	Austin	260	323	325	312	304	16.92%
78727	Austin	695	676	686	763	751	8.06%
78728	Austin	329	308	336	327	337	2.43%
78729	Austin	427	434	497	474	544	27.40%
78730	Austin	101	110	102	120	98	-2.97%
78731	Austin	560	507	541	501	503	-10.18%
78732	Austin	79	83	105	114	148	87.34%
78733	Austin	88	86	79	77	81	-7.95%
78734	Austin	173	201	191	201	181	4.62%
78735	Austin	245	271	265	259	257	4.90%

<sup>1</sup> These numbers do not represent total enrollment for the county due to zip codes that span more than one county.

NOTES: Headcount based on zip code data as reported and entered in the ACC database. Zip code regions are based on definitions developed by ACC administration.

Source: Fall 12th Class Day Data

**Headcount by Zip Code (continued)  
Fall 2003 - 2007**

Zip Code	Region	Fall 2003	Fall 2004	Fall 2005	Fall 2006	Fall 2007	03-07 % chg
78736	Austin Austin/Travis County, Southwest	235	218	218	234	240	2.13%
78737	Austin Hays County <sup>1</sup>	135	151	185	175	169	25.19%
78738	Austin West Travis County	73	107	87	93	109	49.32%
78739	Austin Austin/Travis County, Southwest	213	241	280	296	328	53.99%
78741	Austin Austin/Travis County, Southeast	1,388	1,702	2,010	2,114	2,006	44.52%
78742	Austin Austin/Travis County, Southeast	5	12	15	14	18	260.00%
78744	Austin Austin/Travis County, Southeast	681	721	838	883	869	27.61%
78745	Austin Austin/Travis County, South	1,683	1,743	1,722	1,791	1,756	4.34%
78746	Austin Austin/Travis County, Southwest	353	309	317	353	355	0.57%
78747	Austin Austin/Travis County, Southeast	162	217	207	225	259	59.88%
78748	Austin Austin/Travis County, South	1,036	1,045	1,045	1,121	1,166	12.55%
78749	Austin Austin/Travis County, Southwest	1,116	1,120	1,086	1,044	1,064	-4.66%
78750	Austin, Northwest	424	382	414	439	463	9.20%
78751	Austin, Central	489	501	507	515	480	-1.84%
78752	Austin, Central	432	370	338	349	329	-23.84%
78753	Austin Pflugerville/Northeast Travis County	954	930	996	1,003	1,008	5.66%
78754	Austin Pflugerville/Northeast Travis County	179	230	260	287	317	77.09%
78756	Austin, Central	236	190	170	190	193	-18.22%
78757	Austin, Central	598	587	588	556	522	-12.71%
78758	Austin, North	1,524	1,469	1,456	1,381	1,444	-5.25%
78759	Austin, Northwest	1,142	1,019	1,046	930	975	-14.62%
78953	Rosanky Bastrop County <sup>1</sup>	6	6	6	7	7	16.67%
78957	Smithville Bastrop County <sup>1</sup>	39	53	46	50	65	66.67%
	Other/Unknown	2,118	1,586	1,578	1,961	1,517	-28.38%
	<b>GRAND TOTAL</b>	<b>30,203</b>	<b>30,439</b>	<b>31,908</b>	<b>33,039</b>	<b>33,508</b>	<b>10.94%</b>

<sup>1</sup> These numbers do not represent total enrollment for the county due to zip codes that span more than one county.

NOTES: Headcount based on zip code data as reported and entered in the ACC database. Zip code regions are based on definitions developed by ACC administration.

Source: Fall 12th Class Day Data

**Student Characteristics  
Declared Majors  
Fall 2007**

**Associate of Arts (AA)**

	<b>Fall 2006</b>	<b>Fall 2007</b>	<b>06-07 % chg</b>
Anthropology	120	97	-19.17%
Art	527	599	13.66%
Communications <sup>1</sup>	71	75	5.63%
Creative Writing	46	34	-26.09%
Dance	80	75	-6.25%
Drama	122	136	11.48%
Economics	148	127	-14.19%
English	338	346	2.37%
Foreign Lanuage			
French	27	32	18.52%
General	3	4	33.33%
German	18	16	-11.11%
Japanese	33	41	24.24%
Latin	1	1	0.00%
Russian	8	11	37.50%
Spanish	124	131	5.65%
General Studies	2,825	2,625	-7.08%
Early Childhood Education <sup>1</sup>	368	213	-42.12%
Grade 4-8 Certification <sup>1</sup>	80	43	-46.25%
Geography	36	34	-5.56%
Geographic Information Systems	2	11	450.00%
Government	207	197	-4.83%
History	313	273	-12.78%
Journalism	250	268	7.20%
Music	346	414	19.65%
Performing Arts <sup>1</sup>	8	10	25.00%
Philosophy	76	62	-18.42%
Psychology	845	871	3.08%
Radio-Television-Film	403	376	-6.70%
Social Work	206	189	-8.25%
Sociology	118	111	-5.93%
Speech	60	49	-18.33%
Undeclared	669	700	4.63%
<b>TOTAL</b>	<b>8,478</b>	<b>8,171</b>	<b>-3.62%</b>

<sup>1</sup> Programs no longer active, but students already in the pipeline may be allowed to complete the degree plan.

**Source:** Fall 12th Class Day Data

**Student Characteristics  
Declared Majors  
Fall 2007**

**Associate of Arts in Teaching (AAT)**

	<b>Fall 2006</b>	<b>Fall 2007</b>	<b>06-07 % chg</b>
Education			
8-12 Grade Levels	133	254	90.98%
EC-4 & 4-8 Grade Levels	91	179	96.70%
EC-4 Grade Levels - Early Childhood Specialization	193	451	133.68%
<b>TOTAL</b>	<b>417</b>	<b>884</b>	<b>111.99%</b>

**Associate of Science (AS)**

	<b>Fall 2006</b>	<b>Fall 2007</b>	<b>06-07 % chg</b>
Biology	542	517	-4.61%
Business Administration	1,632	1,592	-2.45%
Chemistry	122	118	-3.28%
Computer Science	585	554	-5.30%
Engineering	677	708	4.58%
Environmental Studies	56	54	-3.57%
General Studies in Science	219	240	9.59%
Geology	67	52	-22.39%
Health & Kinesiology			
Health	228	216	-5.26%
Kinesiology	337	261	-22.55%
Mathematics	140	132	-5.71%
Physical Sciences <sup>1</sup>	11	8	-27.27%
Physics - Astronomy	70	82	17.14%
Pre-Dental	154	141	-8.44%
Pre-Medical	536	665	24.07%
Pre-Pharmacy	222	236	6.31%
Pre-Veterinary	139	123	-11.51%
Undeclared	343	347	1.17%
<b>TOTAL</b>	<b>6,080</b>	<b>6,046</b>	<b>-0.56%</b>

<sup>1</sup> Programs no longer active, but students already in the pipeline may be allowed to complete the degree plan.

Source: Fall 12th Class Day Data

Student Characteristics  
Declared Majors  
Fall 2007

Associate of Applied Science (AAS)

	Fall 2006	Fall 2007	06-07 % chg
Architectural and Engineering Computer Aided Design			
Architectural Specialization	3	57	1800.00%
Electronic Graphics Specialization	.	5	.
Interdisciplinary Specialization	2	6	200.00%
Mechanical Specialization	1	17	1600.00%
Accounting	71	75	5.63%
Accounting Specialist	185	132	-28.65%
Accounting Technician	73	199	172.60%
Professional Accountant <sup>1</sup>	212	90	-57.55%
Automotive Technology	122	122	0.00%
Biotechnology	56	53	-5.36%
Building Construction Technology - Construction Management	62	60	-3.23%
Business & Technical Communication	.	13	.
Business & Government Communications	64	99	54.69%
Technical Communications	83	78	-6.02%
Business Management <sup>1</sup>	5	3	-40.00%
Child Development	173	150	-13.29%
Commercial Art <sup>1</sup>	16	14	-12.50%
Commercial Music Management	192	182	-5.21%
Computer Information Technology	58	56	-3.45%
Computer Programming	259	256	-1.16%
Local Area Network Systems-Network Administration	112	116	3.57%
Microcomputer Application Support	31	25	-19.35%
Microcomputer Applications - User & Desktop Support	.	3	.
Web Programming Specialization	1	10	900.00%
Criminal Justice	6	1	-83.33%
Corrections	166	158	-4.82%
Law Enforcement	405	379	-6.42%
Law Enforcement Advanced Skills <sup>1</sup>	6	4	-33.33%
Culinary Arts	104	115	10.58%
Dental Hygiene	146	198	35.62%
Electronics and Advanced Technology			
Automation,Robotics and Control Technology	19	20	5.26%
Computer Electronics/Telecommunications	26	24	-7.69%
Electronic Technology <sup>1</sup>	1	2	100.00%
Engineering	108	112	3.70%
Power Technology Specialization	2	14	600.00%

<sup>1</sup> Programs no longer active, but students already in the pipeline may be allowed to complete the degree plan.

Source: Fall 12th Class Day Data

**Student Characteristics  
Declared Majors  
Fall 2007**

**Associate of Applied Science (AAS) (continued)**

	<b>Fall 2006</b>	<b>Fall 2007</b>	<b>06-07 % chg</b>
Electronics and Advanced Technology (continued)			
Robotics/Instrumentation & Control <sup>1</sup>	.	3	.
Semiconductor Manufacturing Technology Technician	31	24	-22.58%
Technician	70	52	-25.71%
Emergency Medical Services Professions	130	130	0.00%
Tech Prep <sup>1</sup>	2	2	0.00%
Engineering Design Graphics <sup>1</sup>	15	10	-33.33%
Architectural Specialty <sup>1</sup>	223	225	0.90%
Electronic Graphics Specialty <sup>1</sup>	31	21	-32.26%
Interdisciplinary Specialty <sup>1</sup>	8	9	12.50%
Mechanical Specialty <sup>1</sup>	43	32	-25.58%
Environmental Technology	19	21	10.53%
Financial Management and Mortgage Banking	38	27	-28.95%
Fire Protection Technology	74	62	-16.22%
Heating, Air Conditioning, & Refrigeration Technology	40	49	22.50%
Hospitality Management	1	.	.
Baccalaureate Prep Specialization	9	8	-11.11%
Food & Lodging Specialization	13	8	-38.46%
Hotel & Lodging Specialization	22	13	-40.91%
Hotel Specialization <sup>1</sup>	.	3	.
Meeting and Event Planning Specialization	23	22	-4.35%
Restaurant Specialization <sup>1</sup>	.	1	.
Travel & Tourism	6	10	66.67%
Human Services			
Addictions Counseling	57	40	-29.82%
General Human Services	89	81	-8.99%
Interpreter Preparation Program	59	74	25.42%
Therapeutic Recreation	20	19	-5.00%
International Business	19	46	142.11%
Jewelry	15	18	20.00%
Land Surveying Technology	17	25	47.06%
Legal Assistant	155	146	-5.81%
Management	306	296	-3.27%
Administrative Specialist <sup>1</sup>	1	2	100.00%
Marketing	233	232	-0.43%
Fashion Merchandising	108	109	0.93%

<sup>1</sup> Programs no longer active, but students already in the pipeline may be allowed to complete the degree plan.

Source: Fall 12th Class Day Data



**Student Characteristics  
Declared Majors  
Fall 2007**

**Associate of Applied Science (AAS) (continued)**

	<b>Fall 2006</b>	<b>Fall 2007</b>	<b>06-07 % chg</b>
Medical Laboratory Technology	72	82	13.89%
Nursing			
Nursing Mobility Track	40	76	90.00%
Nursing Traditional Track	476	921	93.49%
Occupational Therapy Assistant	45	53	17.78%
Office Administration	17	15	-11.76%
Administrative Assistant	35	34	-2.86%
Legal Administrative Assistant	19	19	0.00%
Medical Administrative Assistant	42	39	-7.14%
Personal Fitness Trainer	16	19	18.75%
Photographic Technology			
Advertising-Fashion Focus	61	57	-6.56%
People-Portrait Focus	61	53	-13.11%
Photography & Graphic Arts <sup>1</sup>	1	1	0.00%
Professional Photography <sup>1</sup>	5	5	0.00%
Physical Fitness Technician <sup>1</sup>	3	12	300.00%
Physical Therapist Assistant	212	191	-9.91%
Printing & Desktop Publishing Production <sup>1</sup>	15	13	-13.33%
Quality Assurance Management & Technology <sup>1</sup>	.	2	.
Radiology	388	406	4.64%
Real Estate	96	115	19.79%
Sonography			
Diagnostic Cardiac Sonography	25	30	20.00%
Diagnostic Medical Sonography	72	95	31.94%
Surgical Technology	81	74	-8.64%
Undeclared	305	342	12.13%
Visual Communication Design	61	47	-22.95%
2D Animation Specialization	25	25	0.00%
3D Animation Specialization	111	112	0.90%
Graphic Arts Technology Specialization	.	6	.
Graphic Design Specialization	128	146	14.06%
Interactive Design Specialization	23	32	39.13%
Welding Technology	.	2	.
Art Metals	40	28	-30.00%
Code Welding	36	32	-11.11%
Code Welding-US Navy - Tech Prep <sup>1</sup>	4	2	-50.00%
<b>TOTAL</b>	<b>7,162</b>	<b>7,754</b>	<b>8.27%</b>

<sup>1</sup> Programs no longer active, but students already in the pipeline may be allowed to complete the degree plan.

**Student Characteristics  
Declared Majors  
Fall 2007**

**Certificates**

	<b>Fall 2006</b>	<b>Fall 2007</b>	<b>06-07 % chg</b>
Accounting			
Accounting Clerk	103	119	15.53%
Professional Accountant	39	55	41.03%
Architectural and Engineering Computer Aided Design			
Architectural and Engineering CAD	2	14	600.00%
Integrated Circuit Layout & Design Specialization	1	4	300.00%
Automotive Technology			
Automotive Drive Train Specialist	8	6	-25.00%
Automotive Engine Performance Specialist	24	29	20.83%
Automotive Heating & Air Conditioning	13	8	-38.46%
Automotive Technician	87	85	-2.30%
Automotive Technology Advanced Skills Certificate <sup>1</sup>	0	1	.
Automotive Technology Enhanced Skills Certificate	8	9	12.50%
Brake & Suspension	6	3	-50.00%
Marine Engine Repair	5	4	-20.00%
Motorcycle Repair	16	14	-12.50%
Small Engine Repair	1	5	400.00%
Biotechnology	29	42	44.83%
Building Construction Technology	0	1	.
Cabinetry & Interior Finishes <sup>1</sup>	3	3	0.00%
Carpentry	38	24	-36.84%
Construction Manager	12	24	100.00%
Enhanced Skills Certificate <sup>1</sup>	0	2	.
Woodworking	16	17	6.25%
Business and Technical Communications			
Business & Government Communications	203	312	53.69%
Technical Communications	103	149	44.66%
Business Management <sup>1</sup>	0	1	.
Child Development	250	336	34.40%
Enhanced Skills	25	35	40.00%
Computer Information Technology			
Computer Information Technology Database	67	77	14.93%
Computer Programming-C++ Track	47	43	-8.51%
Computer Programming-Java Track	25	30	20.00%
Local Area Network Systems Network Administration	25	19	-24.00%
Web Developer Specialist	27	46	70.37%

<sup>1</sup> Programs no longer active, but students already in the pipeline may be allowed to complete the degree plan.

Source: Fall 12th Class Day Data

**Student Characteristics  
Declared Majors  
Fall 2007**

**Certificates (continued)**

	<b>06-07</b>		
	<b>Fall 2006</b>	<b>Fall 2007</b>	<b>% chg</b>
Criminal Justice - Texas Peace Officer Sequence	125	157	25.60%
Culinary Arts	50	70	40.00%
Culinarian	10	11	10.00%
Diagnostic Medical Imaging			
Advanced Technical Certificate	8	7	-12.50%
Diagnostic Cardiac Sonography	0	1	.
Vascular Technology Enhanced Skills Certificate	0	2	.
Digital Publishing & Graphics Technology <sup>1</sup>			
Desktop Publishing <sup>1</sup>	2	4	100.00%
Printing Production <sup>1</sup>	3	1	-66.67%
Printing & Desktop Publishing	0	1	.
Electronics and Advanced Technologies			
Automation, Robotics and Controls Technology	7	9	28.57%
Computer Electronics/Telecommunications	20	24	20.00%
Electronic Technology <sup>1</sup>	0	1	.
Engineering Technology	57	97	70.18%
Power Technology	1	3	200.00%
Semiconductor Manufacturing Technology Specialist	11	10	-9.09%
Technician	22	24	9.09%
Emergency Medical Services			
EMT Intermediate Certificate	13	22	69.23%
EMT Paramedic Certificate	29	36	24.14%
Engineering Design Graphics <sup>1</sup>	50	47	-6.00%
Integrated Circuit Layout & Design Specialist <sup>1</sup>	4	8	100.00%
Environmental Science and Technology	1	0	.
Financial Management and Mortgage Banking	5	0	.
Financial Management <sup>1</sup>	0	1	.
Mortgage Banking	0	10	.
Fire Protection	55	76	38.18%
Heating, Air Conditioning & Refrigeration	63	47	-25.40%
Hospitality Management	26	33	26.92%
Meeting Planning	20	14	-30.00%
Travel & Tourism	18	29	61.11%

<sup>1</sup> Programs no longer active, but students already in the pipeline may be allowed to complete the degree plan.

Source: Fall 12th Class Day Data

**Student Characteristics  
Declared Majors  
Fall 2007**

**Certificates (continued)**

	<b>Fall 2006</b>	<b>Fall 2007</b>	<b>06-07 % chg</b>
Human Services	2	1	-50.00%
Addictions Counseling Certificate	26	36	38.46%
American Sign Language Studies	38	57	50.00%
Interpreter Preparation Program	19	24	26.32%
Therapeutic Recreation	14	27	92.86%
International Business	78	55	-29.49%
Jewelry	22	23	4.55%
Land Surveying Technology	10	7	-30.00%
Legal Assistant	68	66	-2.94%
Management	9	4	-55.56%
Administrative Management	83	106	27.71%
International Business <sup>1</sup>	.	7	.
Management Specialties Leadership	13	18	38.46%
Small Business Management	86	87	1.16%
Marketing	1	1	0.00%
Basic Skills	96	128	33.33%
Enhanced Skills Certificate	26	30	15.38%
Fashion Merchandising	54	53	-1.85%
Medical Coding Specialist	45	67	48.89%
Nursing (Vocational)	463	494	6.70%
Office Administration			
Administrative Assistant	32	34	6.25%
Legal Administrative Assistant Specialization	12	17	41.67%
Medical Administrative Assistant Specialization	19	14	-26.32%
Medical Office Assistant Specialization	28	36	28.57%
Office Assistant	16	21	31.25%
Software Applications Specialist	3	6	100.00%
Personal Fitness Technology <sup>1</sup>	44	38	-13.64%
Pharmacy Technician	93	120	29.03%
Photographic Technology			
Digital Assistant	0	1	.
Photographic Artist	73	80	9.59%
Photographic Assistant <sup>1</sup>	10	5	-50.00%
Photojournalism <sup>1</sup>	15	33	120.00%
Physical Fitness Technology <sup>1</sup>	3	3	0.00%
Quality Management & Technology Certificate	1	0	.

<sup>1</sup> Programs no longer active, but students already in the pipeline may be allowed to complete the degree plan.

Source: Fall 12th Class Day Data

Student Characteristics  
Declared Majors  
Fall 2007

Certificates (continued)

			06-07
	Fall 2006	Fall 2007	% chg
Radiology			
Cardiovascular Interventional Radiology	12	10	-16.67%
Computerized Tomography	2	2	0.00%
Magnetic Resonance Imaging	1	3	200.00%
Radio-Television-Film			
Film/Production Video	37	63	70.27%
Film/Video Production Management	14	15	7.14%
Industrial Video <sup>1</sup>	0	5	.
Industrial Video Production Management <sup>1</sup>	0	4	.
Real Estate	143	146	2.10%
Surgical Technology	24	27	12.50%
Undeclared	917	1,334	45.47%
Visual Communication Design			
2D Animation	10	20	100.00%
3D Animation	27	37	37.04%
Applied Multimedia Technology <sup>1</sup>	11	15	36.36%
Graphic Design	53	70	32.08%
Interactive Design	7	12	71.43%
Prepress <sup>1</sup>	21	19	-9.52%
Web Specialization	12	18	50.00%
Welding Technology	1	2	100.00%
Art Metals	20	26	30.00%
Inspection	9	18	100.00%
Jewelry Fabrication <sup>1</sup>	0	2	.
Metal Sculpture	16	16	0.00%
Pipe Welding	11	8	-27.27%
Plate Welding	16	13	-18.75%
Ultrahigh Purity Piping	1	1	0.00%
<b>TOTAL</b>	<b>4,650</b>	<b>5,847</b>	<b>25.74%</b>

<sup>1</sup> Programs no longer active, but students already in the pipeline may be allowed to complete the degree plan.

Source: Fall 12th Class Day Data

**Student Characteristics  
Declared Majors  
Fall 2007**

**Other**

	<b>Fall 2006</b>	<b>Fall 2007</b>	<b>06-07 % chg</b>
Field of Study			
4-8 Teacher Certificate	1	0	.
Business Administration	4	6	50.00%
Criminal Justice	2	0	-100.00%
Early Childhood Education	0	1	.
Marketable Skills Award			
Accounting Specialist	0	1	.
Accounting Technician	1	4	300.00%
Building Construction	0	11	.
Professional Accountant	3	6	100.00%
No Major Data	128	0	.
Pre-Nursing Mobility Track Prerequisites	144	122	-15.28%
Pre-Nursing Traditional Track Prerequisites	1,450	983	-32.21%
Texas Core Curriculum	2	0	.
Pre-Sonography Prerequisites	140	82	-41.43%
Undeclared	853	733	-14.07%
Intend to Transfer	2,503	1,921	-23.25%
Major Not Offered	322	327	1.55%
Non-Degree Seeking	303	274	-9.57%
Taking Courses for Self Improvement	390	335	-14.10%
<b>TOTAL</b>	<b>6,246</b>	<b>4,806</b>	<b>-23.05%</b>

**Summary**

	<b>Fall 2006</b>	<b>Fall 2007</b>	<b>06-07 % chg</b>
Associates of Arts	8,478	8,171	-3.62%
Associates of Arts in Teaching	417	884	111.99%
Associates of Science	6,086	6,046	-0.66%
Associates of Applied Science	7,168	7,754	8.18%
Certificates	4,650	5,847	25.74%
Other	6,246	4,806	-23.05%
<b>TOTAL</b>	<b>33,045</b>	<b>33,508</b>	<b>1.40%</b>

Source: Fall 12th Class Day Data

**Student Characteristics**  
**High School Concurrent Enrollment by School District**  
**Fall 2003 - 2007**

School District	Headcount					03-07
	Fall 2003	Fall 2004	Fall 2005	Fall 2006	Fall 2007	% Chg
Austin ISD	191	237	368	469	396	107.33%
Bastrop ISD	11	23	53	68	67	509.09%
Blanco ISD	-	8	26	22	15	.
Del Valle ISD	19	39	1	24	18	-5.26%
Dripping Springs ISD	7	46	69	42	51	628.57%
Eanes ISD	53	48	36	36	22	-58.49%
Elgin ISD	7	14	9	17	17	142.86%
Fredericksburg ISD	47	36	32	34	36	-23.40%
Georgetown ISD	135	105	140	146	129	-4.44%
Harper ISD	15	24	28	31	32	113.33%
Hays CISD	71	44	65	78	95	33.80%
Jarrell ISD	17	16	43	34	18	5.88%
Johnson City ISD	3	14	14	12	14	366.67%
Lago Vista ISD	4	15	21	30	35	775.00%
Lake Travis ISD	75	98	61	86	79	5.33%
Leander ISD	63	95	165	200	285	352.38%
Liberty Hill ISD	29	46	72	89	97	234.48%
Lockhart ISD	60	53	123	126	140	133.33%
Luling ISD	17	20	45	29	40	135.29%
Manor ISD	26	16	19	20	37	42.31%
Nixon-Smiley ISD	17	14	18	18	29	70.59%
Pflugerville ISD	74	61	58	65	53	-28.38%
Prairie Lea ISD	-	1	1	1	4	.
Round Rock ISD	116	146	113	99	167	43.97%
San Marcos CISD	51	33	24	46	62	21.57%
Smithville ISD	2	-	5	5	5	150.00%
Wimberley ISD	31	17	20	22	97	212.90%
Other <sup>1</sup>	204	231	269	361	376	84.31%
<b>TOTAL</b>	<b>1,345</b>	<b>1,500</b>	<b>1,898</b>	<b>2,210</b>	<b>2,416</b>	<b>79.63%</b>

<sup>1</sup> Other includes home-schooled students, students enrolled in private schools, and students with no high school identified.

NOTES: Concurrently enrolled students are enrolled in high school (as juniors and seniors) and in college. These students receive college credit and may receive high school graduation credit for the classes they take at ACC.

Source: Fall 12th Class Day Data

**Student Characteristics  
First-Time in College Students  
Fall 2005 - 2007**

	Fall 2005		Fall 2006		Fall 2007		05-07 % chg
<b>Student Headcount</b>	<b>4,986</b>		<b>6,236</b>		<b>5,962</b>		<b>19.57%</b>
<b>Residency</b>							
In-District	2,955	59.3%	3,716	59.6%	3,389	56.8%	14.69%
Out-of-District	1,871	37.5%	2,327	37.3%	2,393	40.1%	27.90%
Out-of-State/International	158	3.2%	154	2.5%	127	2.1%	-19.62%
Other/Unknown <sup>1</sup>	2	0.0%	39	0.6%	53	0.9%	2550.00%
<b>Gender</b>							
Male	2,433	48.8%	2,958	47.4%	2,770	46.5%	13.85%
Female	2,553	51.2%	3,278	52.6%	3,192	53.5%	25.03%
<b>Ethnicity</b>							
White	2,922	58.6%	3,534	56.7%	3,521	59.1%	20.50%
Hispanic	1,370	27.5%	1,783	28.6%	1,515	25.4%	10.58%
Black	387	7.8%	477	7.6%	481	8.1%	24.29%
Asian/Pacific Islander	163	3.3%	234	3.8%	252	4.2%	54.60%
Am. Indian/Alaskan Native	41	0.8%	56	0.9%	72	1.2%	75.61%
Non-Resident Alien	61	1.2%	75	1.2%	56	0.9%	-8.20%
Other/Unknown	42	0.8%	77	1.2%	65	1.1%	54.76%
<b>Age</b>							
16 and Under	426	8.5%	792	12.7%	800	13.4%	87.79%
17	772	15.5%	939	15.1%	968	16.2%	25.39%
18	1,972	39.6%	2,247	36.0%	2,219	37.2%	12.53%
19-21	1,056	21.2%	1,253	20.1%	1,119	18.8%	5.97%
22-24	292	5.9%	341	5.5%	294	4.9%	0.68%
25-30	357	7.2%	339	5.4%	293	4.9%	-17.93%
31-35	94	1.9%	143	2.3%	95	1.6%	1.06%
36-50	98	2.0%	165	2.6%	147	2.5%	50.00%
51-64	17	0.3%	18	0.3%	20	0.3%	17.65%
65 and Over	2	0.0%	2	0.0%	2	0.0%	0.00%
Unknown	0	0.0%	0	0.0%	5	0.1%	.

<sup>1</sup> Other includes students with tuition exemptions and waivers.

NOTE: First-time in college students have never attended college or any other postsecondary institution and are not reported as first-time-entering college until they have completed their high school work.

Source: Fall 12th Class Day Data



**Student Characteristics  
Developmental Education - Reading  
Fall 2006 - 2007**

	Fall 2006		Fall 2007		06-07 % Chg
<b>Student Headcount</b>	<b>1,101</b>		<b>1,064</b>		<b>-3.36%</b>
<b>Residency</b>					
In-District	789	71.66%	716	67.29%	-9.25%
Out-of-District	259	23.52%	306	28.76%	18.15%
Out-of-State/International	37	3.36%	32	3.01%	-13.51%
Other/Unknown <sup>1</sup>	16	1.45%	10	0.94%	-37.50%
<b>Gender</b>					
Male	457	41.51%	427	40.13%	-6.56%
Female	644	58.49%	637	59.87%	-1.09%
<b>Student Status</b>					
Part-time	1,043	94.73%	999	93.89%	-4.22%
Full-time <sup>2</sup>	58	5.27%	65	6.11%	12.07%
<b>Ethnicity</b>					
White	321	29.16%	312	29.32%	-2.80%
Hispanic	457	41.51%	425	39.94%	-7.00%
Black	218	19.80%	226	21.24%	3.67%
Asian/Pacific Islander	51	4.63%	56	5.26%	9.80%
Am. Indian/Alaskan Native	6	0.54%	11	1.03%	83.33%
Non-Resident Alien	27	2.45%	15	1.41%	-44.44%
Other/Unknown	21	1.91%	19	1.79%	-9.52%
<b>Age</b>					
16 and Under	3	0.27%	2	0.19%	-33.33%
17	26	2.36%	24	2.26%	-7.69%
18	366	33.24%	383	36.00%	4.64%
19-21	400	36.33%	383	36.00%	-4.25%
22-24	110	9.99%	98	9.21%	-10.91%
25-30	103	9.36%	77	7.24%	-25.24%
31-35	35	3.18%	37	3.48%	5.71%
36-50	52	4.72%	53	4.98%	1.92%
51-64	5	0.45%	6	0.56%	20.00%
65 and Over	1	0.09%	1	0.09%	0.00%
Unknown	0	0.00%	0	0.00%	.
Average Age	21.63	.	21.57	.	-0.28%

<sup>1</sup> Other includes students with tuition exemptions and waivers.

<sup>2</sup> Full-time - 12 credit hours or more.

NOTE: Unduplicated headcount of students who were enrolled in at least one Developmental Reading course.

Source: Fall 12th Class Day Data

**Student Characteristics  
Developmental Education - Writing  
Fall 2006 - 2007**

	Fall 2006		Fall 2007		06-07 % Chg
<b>Student Headcount</b>	<b>673</b>		<b>667</b>		<b>-0.89%</b>
<b>Residency</b>					
In-District	500	74.29%	464	69.57%	-7.20%
Out-of-District	146	21.69%	182	27.29%	24.66%
Out-of-State/International	17	2.53%	18	2.70%	5.88%
Other/Unknown <sup>1</sup>	10	1.49%	3	0.45%	-70.00%
<b>Gender</b>					
Male	335	49.78%	331	49.63%	-1.19%
Female	338	50.22%	336	50.37%	-0.59%
<b>Student Status</b>					
Part-time	606	90.04%	602	90.25%	-0.66%
Full-time <sup>2</sup>	67	9.96%	65	9.75%	-2.99%
<b>Ethnicity</b>					
White	203	30.16%	220	32.98%	8.37%
Hispanic	291	43.24%	250	37.48%	-14.09%
Black	117	17.38%	131	19.64%	11.97%
Asian/Pacific Islander	28	4.16%	32	4.80%	14.29%
Am. Indian/Alaskan Native	4	0.59%	6	0.90%	50.00%
Non-Resident Alien	14	2.08%	12	1.80%	-14.29%
Other/Unknown	16	2.38%	16	2.40%	0.00%
<b>Age</b>					
16 and Under	1	0.15%	1	0.15%	0.00%
17	10	1.49%	10	1.50%	0.00%
18	197	29.27%	191	28.64%	-3.05%
19-21	237	35.22%	237	35.53%	0.00%
22-24	83	12.33%	76	11.39%	-8.43%
25-30	64	9.51%	54	8.10%	-15.63%
31-35	26	3.86%	33	4.95%	26.92%
36-50	47	6.98%	51	7.65%	8.51%
51-64	8	1.19%	11	1.65%	37.50%
65 and Over	0	0.00%	2	0.30%	.
Unknown	1	0.15%	1	0.15%	0.00%
Average Age	22.67	.	23.22	.	2.43%

<sup>1</sup> Other includes students with tuition exemptions and waivers.

<sup>2</sup> Full-time - 12 credit hours or more.

NOTE: Unduplicated headcount of students who were enrolled in at least one Developmental Writing course.

Source: Fall 12th Class Day Data

**Student Characteristics  
Developmental Education - Math  
Fall 2006 - 2007**

	Fall 2006		Fall 2007		06-07 % Chg
<b>Student Headcount</b>	<b>6,765</b>		<b>6,690</b>		<b>-1.11%</b>
<b>Residency</b>					
In-District	4,760	70.36%	4,632	69.24%	-2.69%
Out-of-District	1,771	26.18%	1,854	27.71%	4.69%
Out-of-State/International	204	3.02%	169	2.53%	-17.16%
Other/Unknown <sup>1</sup>	30	0.44%	35	0.52%	16.67%
<b>Gender</b>					
Male	2,816	41.63%	2,718	40.63%	-3.48%
Female	3,949	58.37%	3,972	59.37%	0.58%
<b>Student Status</b>					
Part-time	4,571	67.57%	4,539	67.85%	-0.70%
Full-time <sup>2</sup>	2,194	32.43%	2,151	32.15%	-1.96%
<b>Ethnicity</b>					
White	3,334	49.28%	3,375	50.45%	1.23%
Hispanic	2,231	32.98%	2,081	31.11%	-6.72%
Black	770	11.38%	817	12.21%	6.10%
Asian/Pacific Islander	176	2.60%	220	3.29%	25.00%
Am. Indian/Alaskan Native	72	1.06%	61	0.91%	-15.28%
Non-Resident Alien	90	1.33%	65	0.97%	-27.78%
Other/Unknown	92	1.36%	71	1.06%	-22.83%
<b>Age</b>					
16 and Under	13	0.19%	6	0.09%	-53.85%
17	85	1.26%	108	1.61%	27.06%
18	1,149	16.98%	1,225	18.31%	6.61%
19-21	2,435	35.99%	2,345	35.05%	-3.70%
22-24	970	14.34%	975	14.57%	0.52%
25-30	1,107	16.36%	1,012	15.13%	-8.58%
31-35	421	6.22%	427	6.38%	1.43%
36-50	519	7.67%	532	7.95%	2.50%
51-64	64	0.95%	51	0.76%	-20.31%
65 and Over	2	0.03%	7	0.10%	250.00%
Unknown	0	0.00%	2	0.03%	.
Average Age	23.85	.	23.82	.	-0.13%

<sup>1</sup> Other includes students with tuition exemptions and waivers.

<sup>2</sup> Full-time - 12 credit hours or more.

NOTE: Unduplicated headcount of students who were enrolled in at least one Developmental Math course.

Source: Fall 12th Class Day Data

**Student Characteristics  
Developmental Education - Other<sup>1</sup>  
Fall 2006 - 2007**

	Fall 2006		Fall 2007		06-07 % Chg
<b>Student Headcount</b>	<b>1,160</b>		<b>1,291</b>		<b>11.29%</b>
<b>Residency</b>					
In-District	852	73.45%	893	69.17%	4.81%
Out-of-District	257	22.16%	340	26.34%	32.30%
Out-of-State/International	36	3.10%	35	2.71%	-2.78%
Other/Unknown <sup>2</sup>	15	1.29%	23	1.78%	53.33%
<b>Gender</b>					
Male	511	44.05%	548	42.45%	7.24%
Female	649	55.95%	743	57.55%	14.48%
<b>Student Status</b>					
Part-time	959	82.67%	1,064	82.42%	10.95%
Full-time <sup>3</sup>	201	17.33%	227	17.58%	12.94%
<b>Ethnicity</b>					
White	456	39.31%	472	36.56%	3.51%
Hispanic	435	37.50%	483	37.41%	11.03%
Black	184	15.86%	223	17.27%	21.20%
Asian/Pacific Islander	38	3.28%	45	3.49%	18.42%
Am. Indian/Alaskan Native	7	0.60%	17	1.32%	142.86%
Non-Resident Alien	24	2.07%	25	1.94%	4.17%
Other/Unknown	16	1.38%	26	2.01%	62.50%
<b>Age</b>					
16 and Under	1	0.09%	1	0.08%	0.00%
17	21	1.81%	28	2.17%	33.33%
18	327	28.19%	382	29.59%	16.82%
19-21	439	37.84%	487	37.72%	10.93%
22-24	137	11.81%	150	11.62%	9.49%
25-30	126	10.86%	126	9.76%	0.00%
31-35	46	3.97%	41	3.18%	-10.87%
36-50	58	5.00%	66	5.11%	13.79%
51-64	5	0.43%	9	0.70%	80.00%
65 and Over	0	0.00%	1	0.08%	.
Unknown	0	0.00%	0	0.00%	.
Average Age	22.06	.	22.03	.	-0.14%

<sup>1</sup> Other includes human development and study skills.

<sup>2</sup> Other includes students with tuition exemptions and waivers.

<sup>3</sup> Full-time - 12 credit hours or more.

NOTE: Unduplicated headcount of students who were enrolled in at least one Developmental Other<sup>1</sup> course.

Source: Fall 12th Class Day Data

**Student Characteristics  
District-wide  
Spring 2005 - 2008**

	Spring 2005	Spring 2006	Spring 2007	Spring 2008	05-08 % chg
<b>Student Headcount</b>	<b>29,350</b>	<b>29,852</b>	<b>31,148</b>	<b>32,369</b>	<b>10.29%</b>
<b>Credit Hours</b>	228,765	233,072	243,115	252,894	10.55%
<b>Average Credit Hours</b>	7.79	7.81	7.81	7.81	0.24%
<b>Contact Hours</b>	4,425,608	4,502,720	4,706,752	4,911,800	10.99%
<b>Average Contact Hours</b>	150.79	150.83	151.11	151.74	0.63%
<b>Full-time Student Equivalent (FTSE)<sup>1</sup></b>	15,251	15,538	16,208	16,860	10.55%
<b>Residency</b>					
In-District	20,550 70.02%	21,645 72.51%	22,179 71.21%	22,867 70.64%	11.27%
Out-of-District	7,887 26.87%	7,295 24.44%	8,044 25.83%	8,662 26.76%	9.83%
Out-of-State/International	554 1.89%	596 2.00%	627 2.01%	497 1.54%	-10.29%
Other/Unknown <sup>2</sup>	359 1.22%	316 1.06%	298 0.96%	343 1.06%	-4.46%
<b>Gender</b>					
Male	12,532 42.70%	12,875 43.13%	13,500 43.34%	13,947 43.09%	11.29%
Female	16,818 57.30%	16,977 56.87%	17,648 56.66%	18,422 56.91%	9.54%
<b>Student Status</b>					
Full-time <sup>3</sup>	7,527 25.65%	7,688 25.75%	7,983 25.63%	8,235 25.44%	9.41%
Part-time	21,823 74.35%	22,164 74.25%	23,165 74.37%	24,134 74.56%	10.59%
<b>Ethnicity</b>					
White	17,699 60.30%	17,830 59.73%	18,368 58.97%	19,001 58.70%	7.36%
Hispanic	6,544 22.30%	6,814 22.83%	7,421 23.82%	7,676 23.71%	17.30%
Black	2,211 7.53%	2,340 7.84%	2,464 7.91%	2,607 8.05%	17.91%
Asian/Pacific Islander	1,484 5.06%	1,490 4.99%	1,593 5.11%	1,830 5.65%	23.32%
Am. Indian/Alaskan Native	241 0.82%	247 0.83%	264 0.85%	300 0.93%	24.48%
Non-Resident Alien	676 2.30%	668 2.24%	591 1.90%	496 1.53%	-26.63%
Other/Unknown	495 1.69%	463 1.55%	447 1.44%	459 1.42%	-7.27%
<b>Age</b>					
16 and Under	347 1.18%	395 1.32%	572 1.84%	618 1.91%	78.10%
17	1,008 3.43%	1,108 3.71%	1,245 4.00%	1,542 4.76%	52.98%
18	2,090 7.12%	2,262 7.58%	2,468 7.92%	2,687 8.30%	28.56%
19-21	8,585 29.25%	8,748 29.30%	9,121 29.28%	9,463 29.23%	10.23%
22-24	5,263 17.93%	5,258 17.61%	5,217 16.75%	5,224 16.14%	-0.74%
25-30	5,545 18.89%	5,581 18.70%	5,797 18.61%	5,944 18.36%	7.20%
31-35	2,532 8.63%	2,428 8.13%	2,507 8.05%	2,488 7.69%	-1.74%
36-50	3,278 11.17%	3,380 11.32%	3,466 11.13%	3,580 11.06%	9.21%
51-64	631 2.15%	629 2.11%	679 2.18%	742 2.29%	17.59%
65 and Over	71 0.24%	63 0.21%	76 0.24%	81 0.25%	14.08%
Average Age	26.00 .	25.83 .	25.74 .	25.65 .	-1.35%

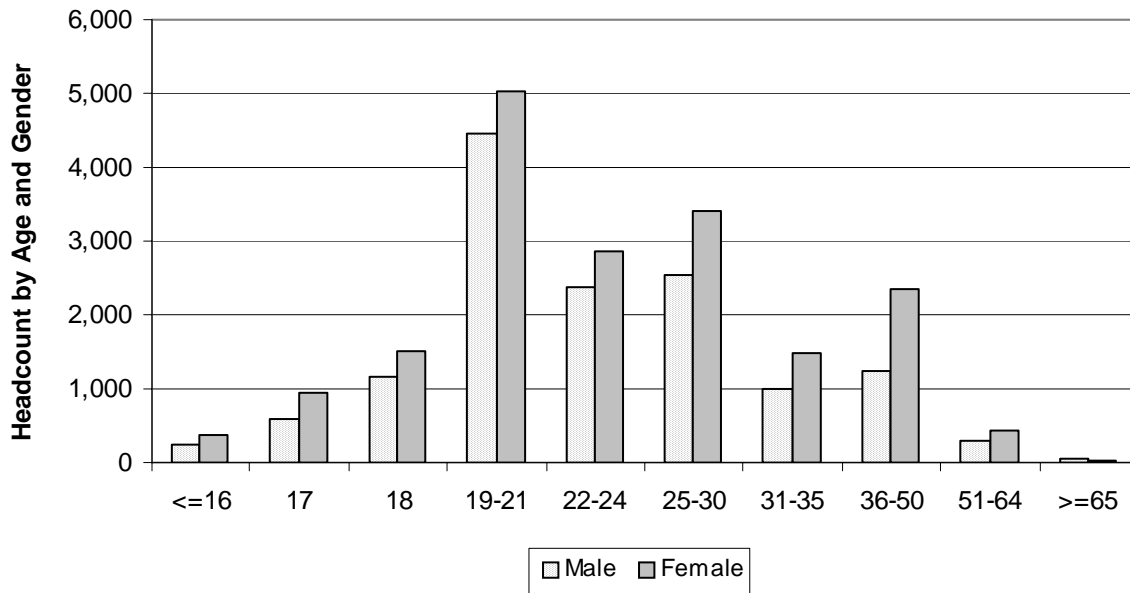
<sup>1</sup> Full-time Student Equivalent (FTSE) is based on 15 SCH.  
<sup>2</sup> Other includes students with tuition exemptions and waivers.  
<sup>3</sup> Full-time - 12 credit hours or more.

NOTE: Percents may not add to 100 due to rounding.

Source: Spring 12th Class Day Data

### Student Characteristics Headcount by Age and Gender Spring 2008

Age	Male		Female		Total	
<b>16 and Under</b>	234	1.68%	384	2.08%	618	1.91%
<b>17</b>	600	4.30%	942	5.11%	1,542	4.76%
<b>18</b>	1,163	8.34%	1,524	8.27%	2,687	8.30%
<b>19-21</b>	4,449	31.90%	5,014	27.22%	9,463	29.23%
<b>22-24</b>	2,367	16.97%	2,857	15.51%	5,224	16.14%
<b>25-30</b>	2,547	18.26%	3,397	18.44%	5,944	18.36%
<b>31-35</b>	997	7.15%	1,491	8.09%	2,488	7.69%
<b>36-50</b>	1,237	8.87%	2,343	12.72%	3,580	11.06%
<b>51-64</b>	310	2.22%	432	2.35%	742	2.29%
<b>65 and Over</b>	43	0.31%	38	0.21%	81	0.25%
<b>TOTAL</b>	<b>13,947</b>	<b>100.00%</b>	<b>18,422</b>	<b>100.00%</b>	<b>32,369</b>	<b>100.00%</b>

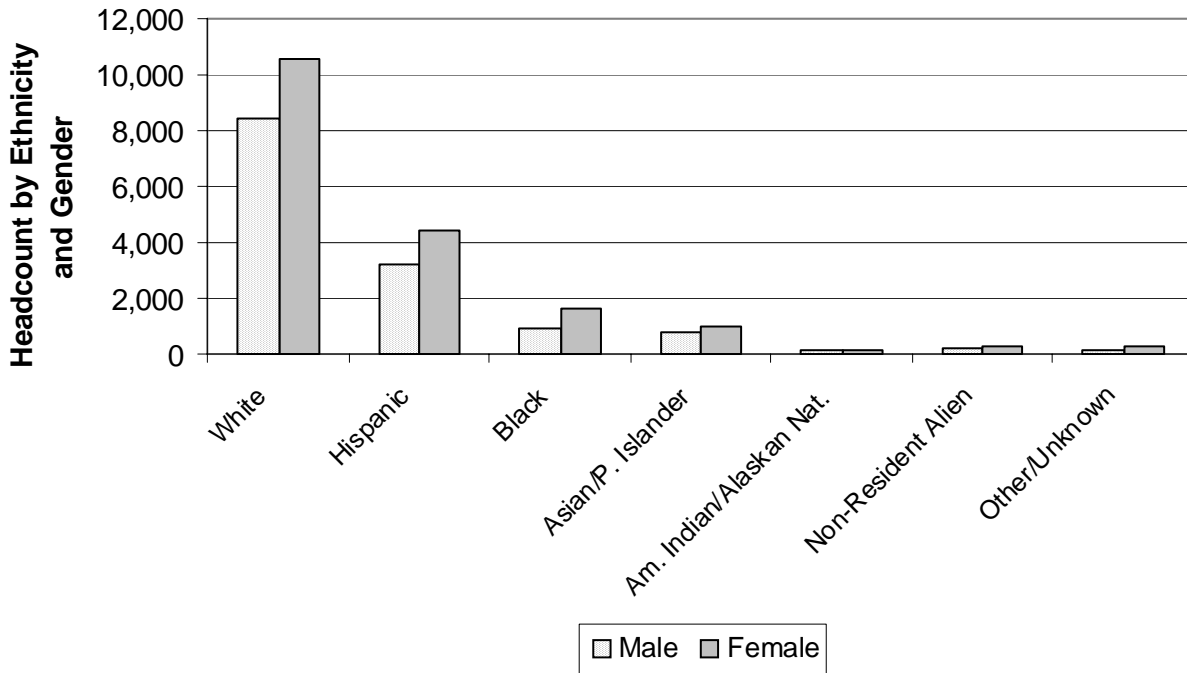


NOTE: Percents may not add to 100 due to rounding.

Source: Spring 12th Class Day Data

**Student Characteristics  
Headcount by Ethnicity and Gender  
Spring 2008**

Ethnicity	Male		Female		Total	
<b>White</b>	8,407	60.28%	10,594	57.51%	19,001	58.70%
<b>Hispanic</b>	3,236	23.20%	4,440	24.10%	7,676	23.71%
<b>Black</b>	942	6.75%	1,665	9.04%	2,607	8.05%
<b>Asian/Pacific Islander</b>	818	5.87%	1,012	5.49%	1,830	5.65%
<b>Am. Indian/Alaskan Native</b>	162	1.16%	138	0.75%	300	0.93%
<b>Non-Resident Alien</b>	209	1.50%	287	1.56%	496	1.53%
<b>Other/Unknown</b>	173	1.24%	286	1.55%	459	1.42%
<b>TOTAL</b>	<b>13,947</b>	<b>100.00%</b>	<b>18,422</b>	<b>100.00%</b>	<b>32,369</b>	<b>100.00%</b>



NOTE: Percents may not add to 100 due to rounding.

Source: Spring 12th Class Day Data

**Student Characteristics  
Headcount by Day/Evening Classification  
Spring 2005 - 2008**

<b>Classification</b>	<b>Spring 2005</b>	<b>Spring 2006</b>	<b>Spring 2007</b>	<b>Spring 2008</b>	<b>05-08 % chg</b>
<b>Day</b>	13,574	14,080	14,957	15,232	12.21%
<b>% of Total</b>	46.25%	47.17%	48.02%	47.06%	
<b>Evening</b>	4,393	4,258	4,442	4,332	-1.39%
<b>% of Total</b>	14.97%	14.26%	14.26%	13.38%	
<b>Telecommunicated</b>	2,424	2,498	2,572	2,943	21.41%
<b>% of Total</b>	8.26%	8.37%	8.26%	9.09%	
<b>Day &amp; Evening</b>	5,083	5,055	5,397	5,699	12.12%
<b>% of Total</b>	17.32%	16.93%	17.33%	17.61%	
<b>Day &amp; Telecommunicated</b>	2,109	2,160	2,161	2,349	11.38%
<b>% of Total</b>	7.19%	7.24%	6.94%	7.26%	
<b>Evening &amp; Telecommunicated</b>	911	916	846	959	5.27%
<b>% of Total</b>	3.10%	3.07%	2.72%	2.96%	
<b>Day &amp; Evening &amp; Telecommunicated</b>	752	746	689	730	-2.93%
<b>% of Total</b>	2.56%	2.50%	2.21%	2.26%	
<b>Non-identifiable</b>	104	139	84	125	20.19%
<b>% of Total</b>	0.35%	0.47%	0.27%	0.39%	
<b>Total</b>	<b>29,350</b>	<b>29,852</b>	<b>31,148</b>	<b>32,369</b>	<b>10.29%</b>

NOTES: Classifications are mutually exclusive. Day students are enrolled in courses that begin before 5:30 PM and evening students are enrolled in courses that begin at or after 5:30 PM. The "Non-identifiable" category includes self-paced courses and courses without designated meeting times. Percents may not add to 100 due to rounding.

Source: Spring 12th Class Day Data



Headcount by Region and Zip Code  
Spring 2005 - 2008

Region	Zip Code	Spring 2005	Spring 2006	Spring 2007	Spring 2008	05-08 % chg
<b>Austin, Central</b>						
Austin	78701	128	130	123	109	-14.84%
Austin	78703	362	367	355	331	-8.56%
Austin	78705	1,046	941	905	936	-10.52%
Austin	78712	1	0	0	2	100.00%
Austin	78751	505	479	451	502	-0.59%
Austin	78752	347	303	297	347	0.00%
Austin	78756	192	188	179	162	-15.63%
Austin	78757	555	541	483	501	-9.73%
<b>Total</b>		<b>3,136</b>	<b>2,949</b>	<b>2,793</b>	<b>2,890</b>	<b>-7.84%</b>
<b>%of Grand Total</b>		<b>10.68%</b>	<b>9.88%</b>	<b>8.97%</b>	<b>8.93%</b>	
<b>Austin, East</b>						
Austin	78702	429	424	395	461	7.46%
Austin	78721	189	190	146	216	14.29%
Austin	78722	190	163	152	188	-1.05%
Austin	78723	600	517	451	485	-19.17%
<b>Total</b>		<b>1,408</b>	<b>1,294</b>	<b>1,144</b>	<b>1,350</b>	<b>-4.12%</b>
<b>%of Grand Total</b>		<b>4.80%</b>	<b>4.33%</b>	<b>3.67%</b>	<b>4.17%</b>	
<b>Austin, North</b>						
Austin	78727	613	652	632	760	23.98%
Austin	78728	297	332	312	340	14.48%
Austin	78758	1,373	1,333	1,202	1,425	3.79%
<b>Total</b>		<b>2,283</b>	<b>2,317</b>	<b>2,146</b>	<b>2,525</b>	<b>10.60%</b>
<b>%of Grand Total</b>		<b>7.78%</b>	<b>7.76%</b>	<b>6.89%</b>	<b>7.80%</b>	
<b>Austin, Northwest</b>						
Austin	78726	272	306	254	294	8.09%
Austin	78730	102	100	99	97	-4.90%
Austin	78731	531	498	457	501	-5.65%
Austin	78750	350	400	376	451	28.86%
Austin	78759	938	905	816	901	-3.94%
<b>Total</b>		<b>2,193</b>	<b>2,209</b>	<b>2,002</b>	<b>2,244</b>	<b>2.33%</b>
<b>%of Grand Total</b>		<b>7.47%</b>	<b>7.40%</b>	<b>6.43%</b>	<b>6.93%</b>	

NOTES: Headcount based on zip code data as reported and entered in the ACC database. Zip code regions are based on definitions developed by ACC administration.

Source: Spring 12th Class Day Data

**Headcount by Region and Zip Code (continued)  
Spring 2005 - 2008**

Region	Zip Code	Spring 2005	Spring 2006	Spring 2007	Spring 2008	05-08 % chg
<b>Austin/Travis County, South</b>						
Manhaca	78652	91	85	93	89	-2.20%
Austin	78704	1,283	1,198	1,087	1,114	-13.17%
Austin	78745	1,617	1,591	1,530	1,702	5.26%
Austin	78748	991	981	953	1,132	14.23%
<b>Total</b>		<b>3,982</b>	<b>3,855</b>	<b>3,663</b>	<b>4,037</b>	<b>1.38%</b>
<b>% of Grand Total</b>		<b>13.57%</b>	<b>12.91%</b>	<b>11.76%</b>	<b>12.47%</b>	
<b>Austin/Travis County, Southeast</b>						
Del Valle	78617	173	213	213	246	42.20%
Austin	78719	28	27	24	24	-14.29%
Austin	78741	1,738	1,990	1,874	1,969	13.29%
Austin	78742	11	16	14	24	118.18%
Austin	78744	738	740	762	813	10.16%
Austin	78747	195	193	210	292	49.74%
<b>Total</b>		<b>2,883</b>	<b>3,179</b>	<b>3,097</b>	<b>3,368</b>	<b>16.82%</b>
<b>% of Grand Total</b>		<b>9.82%</b>	<b>10.65%</b>	<b>9.94%</b>	<b>10.41%</b>	
<b>Austin/Travis County, Southwest</b>						
Austin	78735	269	238	223	253	-5.95%
Austin	78736	203	192	171	223	9.85%
Austin	78739	241	269	251	302	25.31%
Austin	78746	295	315	283	315	6.78%
Austin	78749	1,037	955	910	967	-6.75%
<b>Total</b>		<b>2,045</b>	<b>1,969</b>	<b>1,838</b>	<b>2,060</b>	<b>0.73%</b>
<b>% of Grand Total</b>		<b>6.97%</b>	<b>6.60%</b>	<b>5.90%</b>	<b>6.36%</b>	

NOTES: Headcount based on zip code data as reported and entered in the ACC database. Zip code regions are based on definitions developed by ACC administration.

Source: Spring 12th Class Day Data

Headcount by Region and Zip Code (continued)  
Spring 2005 - 2008

Region	Zip Code	Spring 2005	Spring 2006	Spring 2007	Spring 2008	05-08 % chg
<b>Bastrop County<sup>1</sup></b>						
Bastrop	78602	142	168	183	212	49.30%
Cedar Creek	78612	84	74	84	107	27.38%
Elgin	78621	135	143	140	165	22.22%
McDade	78650	11	9	10	8	-27.27%
Paige	78659	9	16	21	18	100.00%
Red Rock	78662	13	22	23	29	123.08%
Rosanky	78953	8	7	6	7	-12.50%
Smithville	78957	41	35	45	63	53.66%
<b>Total</b>		<b>443</b>	<b>474</b>	<b>512</b>	<b>609</b>	<b>37.47%</b>
<b>% of Grand Total</b>		<b>1.51%</b>	<b>1.59%</b>	<b>1.64%</b>	<b>1.88%</b>	
<b>Blanco County<sup>1</sup></b>						
Blanco	78606	29	33	36	32	10.34%
Hye	78635	2	1	0	0	-100.00%
Johnson City	78636	33	33	30	36	9.09%
Round Mountain	78663	5	9	8	8	60.00%
<b>Total</b>		<b>69</b>	<b>76</b>	<b>74</b>	<b>76</b>	<b>10.14%</b>
<b>% of Grand Total</b>		<b>0.24%</b>	<b>0.25%</b>	<b>0.24%</b>	<b>0.23%</b>	
<b>Burnet County<sup>1</sup></b>						
Bertram	78605	12	9	16	12	0.00%
Briggs	78608	0	0	1	1	.
Burnet	78611	28	24	24	20	-28.57%
Marble Falls	78654	36	33	26	36	0.00%
<b>Total</b>		<b>76</b>	<b>66</b>	<b>67</b>	<b>69</b>	<b>-9.21%</b>
<b>% of Grand Total</b>		<b>0.26%</b>	<b>0.22%</b>	<b>0.22%</b>	<b>0.21%</b>	

<sup>1</sup> These numbers do not represent total enrollment for the county due to zip codes that span more than one county.

NOTES: Headcount based on zip code data as reported and entered in the ACC database. Zip code regions are based on definitions developed by ACC administration.

Source: Spring 12th Class Day Data

**Headcount by Region and Zip Code (continued)  
Spring 2005 - 2008**

Region	Zip Code	Spring 2005	Spring 2006	Spring 2007	Spring 2008	05-08 % chg
<b>Caldwell County<sup>1</sup></b>						
Dale	78616	32	46	56	64	100.00%
Lockhart	78644	152	172	185	206	35.53%
Luling	78648	42	58	30	38	-9.52%
Martindale	78655	30	15	18	16	-46.67%
Maxwell	78656	23	27	18	23	0.00%
<b>Total</b>		<b>279</b>	<b>318</b>	<b>307</b>	<b>347</b>	<b>24.37%</b>
<b>% of Grand Total</b>		<b>0.95%</b>	<b>1.07%</b>	<b>0.99%</b>	<b>1.07%</b>	
<b>Cedar Park/Leander</b>						
Cedar Park	78613	1,241	1,352	1,142	1,561	25.79%
Leander	78641	801	799	698	930	16.10%
Liberty Hill	78642	75	105	105	145	93.33%
<b>Total</b>		<b>2,117</b>	<b>2,256</b>	<b>1,945</b>	<b>2,636</b>	<b>24.52%</b>
<b>% of Grand Total</b>		<b>7.21%</b>	<b>7.56%</b>	<b>6.24%</b>	<b>8.14%</b>	
<b>Georgetown/North Williamson County</b>						
Florence	76527	12	8	10	15	25.00%
Granger	76530	3	6	10	10	233.33%
Jarrell	76537	21	32	39	44	109.52%
Georgetown	78626	159	170	177	252	58.49%
Georgetown	78628	311	331	329	375	20.58%
<b>Total</b>		<b>506</b>	<b>547</b>	<b>565</b>	<b>696</b>	<b>37.55%</b>
<b>% of Grand Total</b>		<b>1.72%</b>	<b>1.83%</b>	<b>1.81%</b>	<b>2.15%</b>	
<b>Gillespie County<sup>1</sup></b>						
Doss	78618	3	4	2	2	-33.33%
Fredericksburg	78624	154	137	114	175	13.64%
Harper	78631	35	35	31	25	-28.57%
Stonewall	78671	3	2	4	6	100.00%
Willow City	78675	1	0	0	1	0.00%
<b>Total</b>		<b>196</b>	<b>178</b>	<b>151</b>	<b>209</b>	<b>6.63%</b>
<b>% of Grand Total</b>		<b>0.67%</b>	<b>0.60%</b>	<b>0.48%</b>	<b>0.65%</b>	

<sup>1</sup> These numbers do not represent total enrollment for the county due to zip codes that span more than one county.

NOTES: Headcount based on zip code data as reported and entered in the ACC database. Zip code regions are based on definitions developed by ACC administration.

Source: Spring 12th Class Day Data

### Headcount by Region and Zip Code (continued) Spring 2005 - 2008

Region	Zip Code	Spring 2005	Spring 2006	Spring 2007	Spring 2008	05-08 % chg
<b>Gonzales County</b>						
Leesville	78122	1	1	1	2	100.00%
Nixon	78140	3	6	11	12	300.00%
Smiley	78159	2	2	3	5	150.00%
Cost	78614	4	1	2	5	25.00%
Gonzales	78629	17	23	16	10	-41.18%
Ottine	78658	4	1	0	0	-100.00%
<b>Total</b>		<b>31</b>	<b>34</b>	<b>33</b>	<b>34</b>	<b>9.68%</b>
<b>% of Grand Total</b>		<b>0.11%</b>	<b>0.11%</b>	<b>0.11%</b>	<b>0.11%</b>	
<b>Hays County<sup>1</sup></b>						
Buda	78610	179	192	190	253	41.34%
Driftwood	78619	20	19	18	29	45.00%
Dripping Springs	78620	153	144	132	151	-1.31%
Kyle	78640	220	275	281	389	76.82%
San Marcos	78666	580	554	552	649	11.90%
Wimberley	78676	105	122	94	166	58.10%
Austin	78737	150	149	146	163	8.67%
<b>Total</b>		<b>1,407</b>	<b>1,455</b>	<b>1,413</b>	<b>1,800</b>	<b>27.93%</b>
<b>% of Grand Total</b>		<b>4.79%</b>	<b>4.87%</b>	<b>4.54%</b>	<b>5.56%</b>	
<b>Manor/East Travis County</b>						
Manor	78653	192	233	238	307	59.90%
Austin	78724	223	204	193	240	7.62%
Austin	78725	76	90	102	121	59.21%
<b>Total</b>		<b>491</b>	<b>527</b>	<b>533</b>	<b>668</b>	<b>36.05%</b>
<b>% of Grand Total</b>		<b>1.67%</b>	<b>1.77%</b>	<b>1.71%</b>	<b>2.06%</b>	
<b>Pflugerville/Northeast Travis County</b>						
Pflugerville	78660	653	690	681	811	24.20%
Austin	78753	890	923	837	1,000	12.36%
Austin	78754	227	248	276	316	39.21%
<b>Total</b>		<b>1,770</b>	<b>1,861</b>	<b>1,794</b>	<b>2,127</b>	<b>20.17%</b>
<b>% of Grand Total</b>		<b>6.03%</b>	<b>6.23%</b>	<b>5.76%</b>	<b>6.57%</b>	

<sup>1</sup> These numbers do not represent total enrollment for the county due to zip codes that span more than one county.

NOTES: Headcount based on zip code data as reported and entered in the ACC database. Zip code regions are based on definitions developed by ACC administration.

Source: Spring 12th Class Day Data

**Headcount by Region and Zip Code (continued)  
Spring 2005 - 2008**

<b>Region</b>	<b>Zip Code</b>	<b>Spring 2005</b>	<b>Spring 2006</b>	<b>Spring 2007</b>	<b>Spring 2008</b>	<b>05-08 % chg</b>
<b>Round Rock</b>						
Round Rock	78664	738	838	885	926	25.47%
Round Rock	78681	522	527	499	591	13.22%
Austin	78717	213	286	287	370	73.71%
Austin	78729	439	440	439	546	24.37%
<b>Total</b>		<b>1,912</b>	<b>2,091</b>	<b>2,110</b>	<b>2,433</b>	<b>27.25%</b>
<b>% of Grand Total</b>		<b>6.51%</b>	<b>7.00%</b>	<b>6.77%</b>	<b>7.52%</b>	
<b>Taylor/Hutto/East Williamson County</b>						
Taylor	76574	41	36	22	33	-19.51%
Thrall	76578	2	2	1	3	50.00%
Coupland	78615	6	3	5	6	0.00%
Hutto	78634	94	100	126	168	78.72%
<b>Total</b>		<b>143</b>	<b>141</b>	<b>154</b>	<b>210</b>	<b>46.85%</b>
<b>% of Grand Total</b>		<b>0.49%</b>	<b>0.47%</b>	<b>0.49%</b>	<b>0.65%</b>	
<b>West Travis County</b>						
Leander	78645	107	125	100	138	28.97%
Spicewood	78669	62	55	58	64	3.23%
Austin	78732	90	92	111	124	37.78%
Austin	78733	71	79	89	69	-2.82%
Austin	78734	186	165	164	184	-1.08%
Austin	78738	96	89	91	132	37.50%
<b>Total</b>		<b>612</b>	<b>605</b>	<b>613</b>	<b>711</b>	<b>16.18%</b>
<b>% of Grand Total</b>		<b>2.09%</b>	<b>2.03%</b>	<b>1.97%</b>	<b>2.20%</b>	
<b>Other/Unknown</b>		<b>1,368</b>	<b>1,451</b>	<b>4,194</b>	<b>1,270</b>	<b>-7.16%</b>
<b>Total</b>		<b>1,368</b>	<b>1,451</b>	<b>4,194</b>	<b>1,270</b>	<b>-7.16%</b>
<b>% of Grand Total</b>		<b>4.66%</b>	<b>4.86%</b>	<b>13.46%</b>	<b>3.92%</b>	
<b>GRAND TOTAL</b>		<b>29,350</b>	<b>29,852</b>	<b>31,148</b>	<b>32,369</b>	<b>10.29%</b>

NOTES: Headcount based on zip code data as reported and entered in the ACC database. Zip code regions are based on definitions developed by ACC administration.

Source: Spring 12th Class Day Data

Headcount by Zip Code  
Spring 2005 - 2008

Zip Code	Region	Spring 2005	Spring 2006	Spring 2007	Spring 2008	05-08 % chg
76527 Florence	Georgetown/North Williamson County	12	8	10	15	25.00%
76530 Granger	Georgetown/North Williamson County	3	6	10	10	233.33%
76537 Jarrell	Georgetown/North Williamson County	21	32	39	44	109.52%
76574 Taylor	Taylor/Hutto/East Williamson County	41	36	22	33	-19.51%
76578 Thrall	Taylor/Hutto/East Williamson County	2	2	1	3	50.00%
78122 Leesville	Gonzales County	1	1	1	2	100.00%
78140 Nixon	Gonzales County	3	6	11	12	300.00%
78159 Smiley	Gonzales County	2	2	3	5	150.00%
78602 Bastrop	Bastrop County <sup>1</sup>	142	168	183	212	49.30%
78605 Bertram	Burnet County <sup>1</sup>	12	9	16	12	0.00%
78606 Blanco	Blanco County <sup>1</sup>	29	33	36	32	10.34%
78608 Briggs	Burnet County <sup>1</sup>	0	0	1	1	.
78610 Buda	Hays County <sup>1</sup>	179	192	190	253	41.34%
78611 Burnet	Burnet County <sup>1</sup>	28	24	24	20	-28.57%
78612 Cedar Creek	Bastrop County <sup>1</sup>	84	74	84	107	27.38%
78613 Cedar Park	Cedar Park/Leander	1,241	1,352	1,142	1,561	25.79%
78614 Cost	Gonzales County	4	1	2	5	25.00%
78615 Coupland	Taylor/Hutto/East Williamson County	6	3	5	6	0.00%
78616 Dale	Caldwell County <sup>1</sup>	32	46	56	64	100.00%
78617 Del Valle	Austin/Travis County, Southeast	173	213	213	246	42.20%
78618 Doss	Gillespie County <sup>1</sup>	3	4	2	2	-33.33%
78619 Driftwood	Hays County <sup>1</sup>	20	19	18	29	45.00%
78620 Dripping Springs	Hays County <sup>1</sup>	153	144	132	151	-1.31%
78621 Elgin	Bastrop County <sup>1</sup>	135	143	140	165	22.22%
78624 Fredericksburg	Gillespie County <sup>1</sup>	154	137	114	175	13.64%
78626 Georgetown	Georgetown/North Williamson County	159	170	177	252	58.49%
78628 Georgetown	Georgetown/North Williamson County	311	331	329	375	20.58%
78629 Gonzales	Gonzales County	17	23	16	10	-41.18%
78631 Harper	Gillespie County <sup>1</sup>	35	35	31	25	-28.57%
78634 Hutto	Taylor/Hutto/East Williamson County	94	100	126	168	78.72%
78635 Hye	Blanco County <sup>1</sup>	2	1	0	0	-100.00%
78636 Johnson City	Blanco County <sup>1</sup>	33	33	30	36	9.09%
78640 Kyle	Hays County <sup>1</sup>	220	275	281	389	76.82%
78641 Leander	Cedar Park/Leander	801	799	698	930	16.10%
78642 Liberty Hill	Cedar Park/Leander	75	105	105	145	93.33%
78644 Lockhart	Caldwell County <sup>1</sup>	152	172	185	206	35.53%
78645 Leander	West Travis County	107	125	100	138	28.97%

<sup>1</sup> These numbers do not represent total enrollment for the county due to zip codes that span more than one county.

NOTES: Headcount based on zip code data as reported and entered in the ACC database. Zip code regions are based on definitions developed by ACC administration.

Source: Spring 12th Class Day Data

**Headcount by Zip Code (continued)**  
**Spring 2005 - 2008**

<b>Zip Code</b>	<b>Region</b>	<b>Spring 2005</b>	<b>Spring 2006</b>	<b>Spring 2007</b>	<b>Spring 2008</b>	<b>05-08 %chg</b>
78648 Luling	Caldwell County <sup>1</sup>	42	58	30	38	-9.52%
78650 McDade	Bastrop County <sup>1</sup>	11	9	10	8	-27.27%
78652 Manchaca	Austin/Travis County, South	91	85	93	89	-2.20%
78653 Manor	Manor/East Travis County	192	233	238	307	59.90%
78654 Marble Falls	Burnet County <sup>1</sup>	36	33	26	36	0.00%
78655 Martindale	Caldwell County <sup>1</sup>	30	15	18	16	-46.67%
78656 Maxwell	Caldwell County <sup>1</sup>	23	27	18	23	0.00%
78658 Ottine	Gonzales County	4	1	0	0	-100.00%
78659 Paige	Bastrop County <sup>1</sup>	9	16	21	18	100.00%
78660 Pflugerville	Pflugerville/Northeast Travis County	653	690	681	811	24.20%
78662 Red Rock	Bastrop County <sup>1</sup>	13	22	23	29	123.08%
78663 Round Mountain	Blanco County <sup>1</sup>	5	9	8	8	60.00%
78664 Round Rock	Round Rock	738	838	885	926	25.47%
78666 San Marcos	Hays County <sup>1</sup>	580	554	552	649	11.90%
78669 Spicewood	West Travis County	62	55	58	64	3.23%
78671 Stonewall	Gillespie County <sup>1</sup>	3	2	4	6	100.00%
78675 Willow City	Gillespie County <sup>1</sup>	1	0	0	1	0.00%
78676 Wimberley	Hays County <sup>1</sup>	105	122	94	166	58.10%
78681 Round Rock	Round Rock	522	527	499	591	13.22%
78701 Austin	Austin, Central	128	130	123	109	-14.84%
78702 Austin	Austin, East	429	424	395	461	7.46%
78703 Austin	Austin, Central	362	367	355	331	-8.56%
78704 Austin	Austin/Travis County, South	1,283	1,198	1,087	1,114	-13.17%
78705 Austin	Austin, Central	1,046	941	905	936	-10.52%
78712 Austin	Austin, Central	1	0	0	2	100.00%
78717 Austin	Round Rock	213	286	287	370	73.71%
78719 Austin	Austin/Travis County, Southeast	28	27	24	24	-14.29%
78721 Austin	Austin, East	189	190	146	216	14.29%
78722 Austin	Austin, East	190	163	152	188	-1.05%
78723 Austin	Austin, East	600	517	451	485	-19.17%
78724 Austin	Manor/East Travis County	223	204	193	240	7.62%
78725 Austin	Manor/East Travis County	76	90	102	121	59.21%
78726 Austin	Austin, Northwest	272	306	254	294	8.09%
78727 Austin	Austin, North	613	652	632	760	23.98%
78728 Austin	Austin, North	297	332	312	340	14.48%
78729 Austin	Round Rock	439	440	439	546	24.37%
78730 Austin	Austin, Northwest	102	100	99	97	-4.90%
78731 Austin	Austin, Northwest	531	498	457	501	-5.65%
78732 Austin	West Travis County	90	92	111	124	37.78%

<sup>1</sup> These numbers do not represent total enrollment for the county due to zip codes that span more than one county.

NOTES: Headcount based on zip code data as reported and entered in the ACC database. Zip code regions are based on definitions developed by ACC administration.

Source: Spring 12th Class Day Data



**Headcount by Zip Code (continued)  
Spring 2005 - 2008**

<b>Zip Code</b>	<b>Region</b>	<b>Spring 2005</b>	<b>Spring 2006</b>	<b>Spring 2007</b>	<b>Spring 2008</b>	<b>05-08 %chg</b>
78733 Austin	West Travis County	71	79	89	69	-2.82%
78734 Austin	West Travis County	186	165	164	184	-1.08%
78735 Austin	Austin/Travis County, Southwest	269	238	223	253	-5.95%
78736 Austin	Austin/Travis County, Southwest	203	192	171	223	9.85%
78737 Austin	Hays County <sup>1</sup>	150	149	146	163	8.67%
78738 Austin	West Travis County	96	89	91	132	37.50%
78739 Austin	Austin/Travis County, Southwest	241	269	251	302	25.31%
78741 Austin	Austin/Travis County, Southeast	1,738	1,990	1,874	1,969	13.29%
78742 Austin	Austin/Travis County, Southeast	11	16	14	24	118.18%
78744 Austin	Austin/Travis County, Southeast	738	740	762	813	10.16%
78745 Austin	Austin/Travis County, South	1,617	1,591	1,530	1,702	5.26%
78746 Austin	Austin/Travis County, Southwest	295	315	283	315	6.78%
78747 Austin	Austin/Travis County, Southeast	195	193	210	292	49.74%
78748 Austin	Austin/Travis County, South	991	981	953	1,132	14.23%
78749 Austin	Austin/Travis County, Southwest	1,037	955	910	967	-6.75%
78750 Austin	Austin, Northwest	350	400	376	451	28.86%
78751 Austin	Austin, Central	505	479	451	502	-0.59%
78752 Austin	Austin, Central	347	303	297	347	0.00%
78753 Austin	Pflugerville/Northeast Travis County	890	923	837	1,000	12.36%
78754 Austin	Pflugerville/Northeast Travis County	227	248	276	316	39.21%
78756 Austin	Austin, Central	192	188	179	162	-15.63%
78757 Austin	Austin, Central	555	541	483	501	-9.73%
78758 Austin	Austin, North	1,373	1,333	1,202	1,425	3.79%
78759 Austin	Austin, Northwest	938	905	816	901	-3.94%
78953 Rosanky	Bastrop County <sup>1</sup>	8	7	6	7	-12.50%
78957 Smithville	Bastrop County <sup>1</sup>	41	35	45	63	53.66%
	Other/Unknown	1,368	1,451	4,194	1,270	-7.16%
<b>GRAND TOTAL</b>		<b>29,350</b>	<b>29,852</b>	<b>31,148</b>	<b>32,369</b>	<b>10.29%</b>

<sup>1</sup> These numbers do not represent total enrollment for the county due to zip codes that span more than one county.

NOTES: Headcount based on zip code data as reported and entered in the ACC database. Zip code regions are based on definitions developed by ACC administration.

Source: Spring 12th Class Day Data

**Student Characteristics  
Developmental Education - Reading  
Spring 2007 - 2008**

	Spring 2007		Spring 2008		07-08 % Chg
<b>Student Headcount</b>	<b>686</b>		<b>678</b>		<b>-1.17%</b>
<b>Residency</b>					
In-District	469	68.37%	476	70.21%	1.49%
Out-of-District	190	27.70%	177	26.11%	-6.84%
Out-of-State/International	17	2.48%	19	2.80%	11.76%
Other/Unknown <sup>1</sup>	10	1.46%	6	0.88%	-40.00%
<b>Gender</b>					
Male	263	38.34%	278	41.00%	5.70%
Female	423	61.66%	400	59.00%	-5.44%
<b>Student Status</b>					
Part-time	645	94.02%	641	94.54%	-0.62%
Full-time <sup>2</sup>	41	5.98%	37	5.46%	-9.76%
<b>Ethnicity</b>					
White	188	27.41%	192	28.32%	2.13%
Hispanic	290	42.27%	271	39.97%	-6.55%
Black	132	19.24%	165	24.34%	25.00%
Asian/Pacific Islander	33	4.81%	36	5.31%	9.09%
Am. Indian/Alaskan Native	1	0.15%	4	0.59%	300.00%
Non-Resident Alien	17	2.48%	5	0.74%	-70.59%
Other/Unknown	25	3.64%	5	0.74%	-80.00%
<b>Age</b>					
16 and Under	1	0.15%	2	0.29%	100.00%
17	9	1.31%	7	1.03%	-22.22%
18	143	20.85%	144	21.24%	0.70%
19-21	300	43.73%	295	43.51%	-1.67%
22-24	79	11.52%	84	12.39%	6.33%
25-30	68	9.91%	63	9.29%	-7.35%
31-35	35	5.10%	25	3.69%	-28.57%
36-50	42	6.12%	49	7.23%	16.67%
51-64	8	1.17%	8	1.18%	0.00%
65 and Over	1	0.15%	1	0.15%	0.00%
Unknown	0	0.00%	0	0.00%	.
Average Age	22.79	.	22.98	.	0.83%

<sup>1</sup> Other includes students with tuition exemptions and waivers.

<sup>2</sup> Full-time - 12 credit hours or more.

NOTE: Unduplicated headcount of students who were enrolled in at least one Developmental Reading course.

Source: Spring 12th Class Day Data

**Student Characteristics  
Developmental Education - Writing  
Spring 2007 - 2008**

	Spring 2007		Spring 2008		07-08 % Chg
<b>Student Headcount</b>	<b>529</b>		<b>542</b>		<b>2.46%</b>
<b>Residency</b>					
In-District	376	71.08%	381	70.30%	1.33%
Out-of-District	135	25.52%	147	27.12%	8.89%
Out-of-State/International	12	2.27%	11	2.03%	-8.33%
Other/Unknown <sup>1</sup>	6	1.13%	3	0.55%	-50.00%
<b>Gender</b>					
Male	252	47.64%	272	50.18%	7.94%
Female	277	52.36%	270	49.82%	-2.53%
<b>Student Status</b>					
Part-time	472	89.22%	498	91.88%	5.51%
Full-time <sup>2</sup>	57	10.78%	44	8.12%	-22.81%
<b>Ethnicity</b>					
White	149	28.17%	147	27.12%	-1.34%
Hispanic	223	42.16%	210	38.75%	-5.83%
Black	103	19.47%	129	23.80%	25.24%
Asian/Pacific Islander	19	3.59%	32	5.90%	68.42%
Am. Indian/Alaskan Native	1	0.19%	6	1.11%	500.00%
Non-Resident Alien	14	2.65%	10	1.85%	-28.57%
Other/Unknown	20	3.78%	8	1.48%	-60.00%
<b>Age</b>					
16 and Under	0	0.00%	1	0.18%	.
17	5	0.95%	3	0.55%	-40.00%
18	86	16.26%	96	17.71%	11.63%
19-21	211	39.89%	233	42.99%	10.43%
22-24	76	14.37%	59	10.89%	-22.37%
25-30	60	11.34%	64	11.81%	6.67%
31-35	33	6.24%	35	6.46%	6.06%
36-50	52	9.83%	41	7.56%	-21.15%
51-64	5	0.95%	10	1.85%	100.00%
65 and Over	1	0.19%	0	0.00%	-100.00%
Unknown	0	0.00%	0	0.00%	.
Average Age	24.06	.	23.75	.	-1.29%

<sup>1</sup> Other includes students with tuition exemptions and waivers.

<sup>2</sup> Full-time - 12 credit hours or more.

NOTE: Unduplicated headcount of students who were enrolled in at least one Developmental Writing course.

Source: Spring 12th Class Day Data

**Student Characteristics  
Developmental Education - Math  
Spring 2007 - 2008**

	Spring 2007		Spring 2008		07-08 % Chg
<b>Student Headcount</b>	<b>5,959</b>		<b>5,801</b>		<b>-2.65%</b>
<b>Residency</b>					
In-District	4,247	71.27%	4,050	69.82%	-4.64%
Out-of-District	1,515	25.42%	1,600	27.58%	5.61%
Out-of-State/International	165	2.77%	116	2.00%	-29.70%
Other/Unknown <sup>1</sup>	32	0.54%	35	0.60%	9.38%
<b>Gender</b>					
Male	2,455	41.20%	2,319	39.98%	-5.54%
Female	3,504	58.80%	3,482	60.02%	-0.63%
<b>Student Status</b>					
Part-time	4,141	69.49%	4,091	70.52%	-1.21%
Full-time <sup>2</sup>	1,818	30.51%	1,710	29.48%	-5.94%
<b>Ethnicity</b>					
White	2,944	49.40%	2,851	49.15%	-3.16%
Hispanic	1,913	32.10%	1,857	32.01%	-2.93%
Black	725	12.17%	745	12.84%	2.76%
Asian/Pacific Islander	142	2.38%	180	3.10%	26.76%
Am. Indian/Alaskan Native	64	1.07%	57	0.98%	-10.94%
Non-Resident Alien	77	1.29%	46	0.79%	-40.26%
Other/Unknown	94	1.58%	65	1.12%	-30.85%
<b>Age</b>					
16 and Under	9	0.15%	5	0.09%	-44.44%
17	59	0.99%	47	0.81%	-20.34%
18	689	11.56%	697	12.02%	1.16%
19-21	2,169	36.40%	2,159	37.22%	-0.46%
22-24	958	16.08%	898	15.48%	-6.26%
25-30	1,055	17.70%	999	17.22%	-5.31%
31-35	439	7.37%	391	6.74%	-10.93%
36-50	515	8.64%	532	9.17%	3.30%
51-64	65	1.09%	69	1.19%	6.15%
65 and Over	1	0.02%	4	0.07%	300.00%
Unknown	0	0.00%	0	0.00%	.
Average Age	24.53	.	24.56	.	0.12%

<sup>1</sup> Other includes students with tuition exemptions and waivers.

<sup>2</sup> Full-time - 12 credit hours or more.

NOTE: Unduplicated headcount of students who were enrolled in at least one Developmental Math course.

Source: Spring 12th Class Day Data

**Student Characteristics  
Developmental Education - Other<sup>1</sup>  
Spring 2007 - 2008**

	Spring 2007		Spring 2008		07-08 % Chg
<b>Student Headcount</b>	<b>777</b>		<b>900</b>		<b>15.83%</b>
<b>Residency</b>					
In-District	554	71.30%	629	69.89%	13.54%
Out-of-District	197	25.35%	227	25.22%	15.23%
Out-of-State/International	16	2.06%	25	2.78%	56.25%
Other/Unknown <sup>2</sup>	10	1.29%	19	2.11%	90.00%
<b>Gender</b>					
Male	310	39.90%	373	41.44%	20.32%
Female	467	60.10%	527	58.56%	12.85%
<b>Student Status</b>					
Part-time	617	79.41%	707	78.56%	14.59%
Full-time <sup>3</sup>	160	20.59%	193	21.44%	20.63%
<b>Ethnicity</b>					
White	303	39.00%	336	37.33%	10.89%
Hispanic	281	36.16%	312	34.67%	11.03%
Black	123	15.83%	182	20.22%	47.97%
Asian/Pacific Islander	30	3.86%	51	5.67%	70.00%
Am. Indian/Alaskan Native	3	0.39%	4	0.44%	33.33%
Non-Resident Alien	12	1.54%	7	0.78%	-41.67%
Other/Unknown	25	3.22%	8	0.89%	-68.00%
<b>Age</b>					
16 and Under	2	0.26%	22	2.44%	1000.00%
17	15	1.93%	10	1.11%	-33.33%
18	130	16.73%	139	15.44%	6.92%
19-21	328	42.21%	403	44.78%	22.87%
22-24	108	13.90%	122	13.56%	12.96%
25-30	78	10.04%	101	11.22%	29.49%
31-35	47	6.05%	34	3.78%	-27.66%
36-50	59	7.59%	61	6.78%	3.39%
51-64	10	1.29%	8	0.89%	-20.00%
65 and Over	0	0.00%	0	0.00%	.
Unknown	0	0.00%	0	0.00%	.
Average Age	23.37	.	22.88	.	-2.10%

<sup>1</sup> Other includes human developmental and study skills.

<sup>2</sup> Other includes students with tuition exemptions and waivers.

<sup>3</sup> Full-time - 12 credit hours or more.

NOTE: Unduplicated headcount of students who were enrolled in at least one Developmental Other<sup>1</sup> course.

Source: Spring 12th Class Day Data

THIS PAGE INTENTIONALLY LEFT BLANK