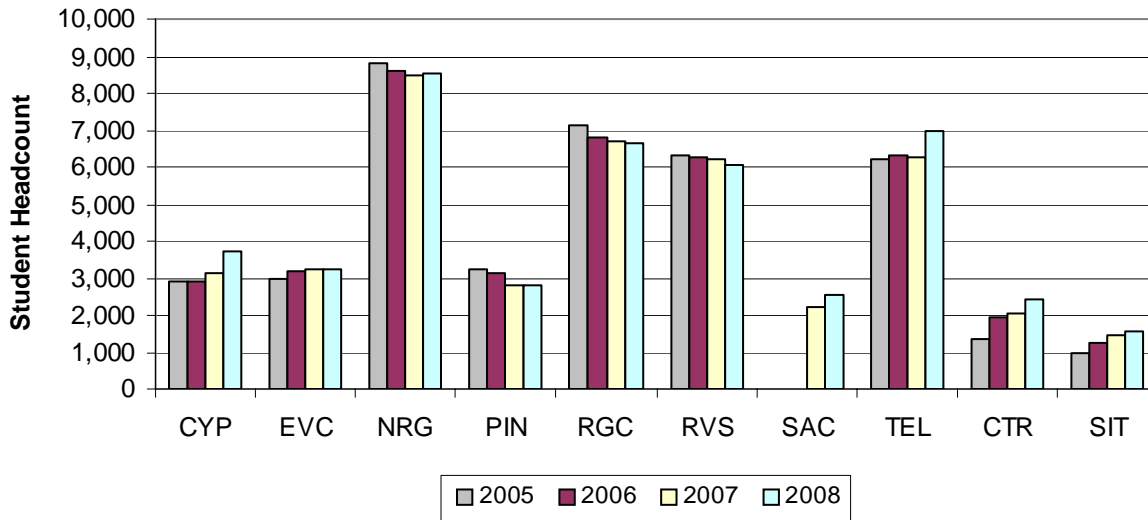


Student Headcount by Location Spring 2008

Location	Spring 2005	Spring 2006	Spring 2007	Spring 2008
Cypress Creek	2,932	2,904	3,155	3,703
Eastview	2,977	3,169	3,233	3,230
Northridge	8,799	8,595	8,506	8,557
Pinnacle	3,241	3,147	2,785	2,792
Rio Grande	7,148	6,836	6,709	6,671
Riverside	6,305	6,270	6,194	6,056
South Austin¹	.	.	2,215	2,544
Telecommunicated Instruction Centers	6,196	6,320	6,268	6,981
Site-Based Instruction	996	1,233	1,444	1,551



¹ Opened in Fall 2006

NOTE: Students who attend multiple locations are counted once at each location.

Source: Spring 12th Class Day Data

Student Headcount Cypress Creek Campus Spring 2005 - 2008

	Spring 2005	Spring 2006	Spring 2007	Spring 2008	05-08 % chg
Student Headcount	2,932	2,904	3,155	3,703	26.30%
Credit Hours	17,108	17,040	18,727	22,390	30.87%
Average Credit Hours	5.83	5.87	5.94	6.05	3.63%
Contact Hours	306,616	309,336	338,664	417,440	36.14%
Average Contact Hours	104.58	106.52	107.34	112.73	7.80%
Full-time Student Equivalent (FTSE)¹	1,141	1,136	1,248	1,493	30.87%
Residency					
In-District	1,892 64.53%	2,103 72.42%	2,241 71.03%	2,546 68.76%	34.57%
Out-of-District	958 32.67%	705 24.28%	832 26.37%	1,056 28.52%	10.23%
Out-of-State/International	66 2.25%	76 2.62%	65 2.06%	76 2.05%	15.15%
Other ²	16 0.55%	20 0.69%	17 0.54%	25 0.68%	56.25%
Gender					
Male	1,153 39.32%	1,217 41.91%	1,275 40.41%	1,479 39.94%	28.27%
Female	1,779 60.68%	1,687 58.09%	1,880 59.59%	2,224 60.06%	25.01%
Status					
Part-time	2,007 68.45%	1,980 68.18%	2,142 67.89%	2,516 67.94%	25.36%
Full-time ³	925 31.55%	924 31.82%	1,013 32.11%	1,187 32.06%	28.32%
Ethnicity					
White	2,042 69.65%	1,983 68.29%	2,120 67.19%	2,399 64.79%	17.48%
Hispanic	483 16.47%	504 17.36%	576 18.26%	677 18.28%	40.17%
Black	164 5.59%	150 5.17%	190 6.02%	226 6.10%	37.80%
Asian/Pacific Islander	136 4.64%	142 4.89%	145 4.60%	259 6.99%	90.44%
Am. Indian/Alaskan Native	27 0.92%	39 1.34%	28 0.89%	32 0.86%	18.52%
Non-Resident Alien	40 1.36%	48 1.65%	49 1.55%	49 1.32%	22.50%
Other/Unknown	40 1.36%	38 1.31%	47 1.49%	61 1.65%	52.50%
Age					
16 and Under	28 0.95%	37 1.27%	48 1.52%	48 1.30%	71.43%
17	90 3.07%	112 3.86%	112 3.55%	128 3.46%	42.22%
18	309 10.54%	300 10.33%	370 11.73%	426 11.50%	37.86%
19-21	998 34.04%	1,006 34.64%	1,057 33.50%	1,231 33.24%	23.35%
22-24	403 13.74%	451 15.53%	450 14.26%	516 13.93%	28.04%
25-30	485 16.54%	436 15.01%	488 15.47%	593 16.01%	22.27%
31-35	232 7.91%	242 8.33%	254 8.05%	263 7.10%	13.36%
36-50	352 12.01%	286 9.85%	327 10.36%	430 11.61%	22.16%
51-64	32 1.09%	32 1.10%	45 1.43%	60 1.62%	87.50%
65 and Over	3 0.10%	2 0.07%	4 0.13%	8 0.22%	166.67%
Average Age	25.20	24.67	24.83	25.15	-0.20%

¹ Full-time Student Equivalent (FTSE) is based on 15 SCH.

² Other includes students with tuition exemptions and waivers.

³ Full-time - 12 credit hours or more.

NOTES: Students who attend multiple locations are counted once at each location. Percents may not add to 100 due to rounding.

Source: Spring 12th Class Day Data

**Student Headcount
Eastview Campus
Spring 2005 - 2008**

	Spring 2005	Spring 2006	Spring 2007	Spring 2007	05-08 % chg
Student Headcount	2,977	3,169	3,233	3,230	8.50%
Credit Hours	16,304	17,922	18,359	18,030	10.59%
Average Credit Hours	5.48	5.66	5.68	5.58	1.92%
Contact Hours	422,888	460,448	467,952	460,368	8.86%
Average Contact Hours	142.05	145.30	144.74	142.53	0.34%
Full-time Student Equivalent (FTSE)¹	1,087	1,195	1,224	1,202	10.59%
Residency					
In-District	2,352 79.01%	2,526 79.71%	2,535 78.41%	2,575 79.72%	9.48%
Out-of-District	558 18.74%	564 17.80%	620 19.18%	583 18.05%	4.48%
Out-of-State/International	35 1.18%	47 1.48%	43 1.33%	31 0.96%	-11.43%
Other ²	32 1.07%	32 1.01%	35 1.08%	41 1.27%	28.13%
Gender					
Male	902 30.30%	912 28.78%	1,038 32.11%	980 30.34%	8.65%
Female	2,075 69.70%	2,257 71.22%	2,195 67.89%	2,250 69.66%	8.43%
Status					
Part-time	2,195 73.73%	2,251 71.03%	2,356 72.87%	2,410 74.61%	9.79%
Full-time ³	782 26.27%	918 28.97%	877 27.13%	820 25.39%	4.86%
Ethnicity					
White	1,286 43.20%	1,383 43.64%	1,451 44.88%	1,441 44.61%	12.05%
Hispanic	853 28.65%	882 27.83%	915 28.30%	943 29.20%	10.55%
Black	549 18.44%	586 18.49%	569 17.60%	555 17.18%	1.09%
Asian/Pacific Islander	137 4.60%	156 4.92%	134 4.14%	151 4.67%	10.22%
Am. Indian/Alaskan Native	21 0.71%	17 0.54%	24 0.74%	17 0.53%	-19.05%
Non-Resident Alien	77 2.59%	91 2.87%	87 2.69%	67 2.07%	-12.99%
Other/Unknown	54 1.81%	54 1.70%	53 1.64%	56 1.73%	3.70%
Age					
16 and Under	4 0.13%	1 0.03%	5 0.15%	3 0.09%	-25.00%
17	12 0.40%	20 0.63%	13 0.40%	20 0.62%	66.67%
18	113 3.80%	134 4.23%	152 4.70%	150 4.64%	32.74%
19-21	659 22.14%	772 24.36%	761 23.54%	743 23.00%	12.75%
22-24	530 17.80%	509 16.06%	556 17.20%	555 17.18%	4.72%
25-30	704 23.65%	736 23.22%	744 23.01%	741 22.94%	5.26%
31-35	380 12.76%	359 11.33%	387 11.97%	363 11.24%	-4.47%
36-50	511 17.16%	547 17.26%	527 16.30%	546 16.90%	6.85%
51-64	60 2.02%	88 2.78%	85 2.63%	106 3.28%	76.67%
65 and Over	4 0.13%	3 0.09%	3 0.09%	3 0.09%	-25.00%
Average Age	28.30	28.24	28.07	28.35	0.18%

¹ Full-time Student Equivalent (FTSE) is based on 15 SCH.

² Other includes students with tuition exemptions and waivers.

³ Full-time - 12 credit hours or more.

NOTES: Students who attend multiple locations are counted once at each location. Percents may not add to 100 due to rounding.

Source: Spring 12th Class Day Data

Student Headcount Northridge Campus Spring 2005 - 2008

	Spring 2005	Spring 2006	Spring 2007	Spring 2008	05-08 % chg
Student Headcount	8,799	8,595	8,506	8,557	-2.75%
Credit Hours	55,322	54,855	53,919	54,472	-1.54%
Average Credit Hours	6.29	6.38	6.34	6.37	1.25%
Contact Hours	1,072,720	1,059,904	1,044,904	1,067,504	-0.49%
Average Contact Hours	121.91	123.32	122.84	124.75	2.33%
Full-time Student Equivalent (FTSE)¹	3,688	3,657	3,595	3,631	-1.54%
Residency					
In-District	5,833 66.29%	6,177 71.87%	5,981 70.32%	6,039 70.57%	3.53%
Out-of-District	2,649 30.11%	2,097 24.40%	2,208 25.96%	2,261 26.42%	-14.65%
Out-of-State/International	173 1.97%	201 2.34%	199 2.34%	141 1.65%	-18.50%
Other ²	144 1.64%	120 1.40%	118 1.39%	116 1.36%	-19.44%
Gender					
Male	4,226 48.03%	4,093 47.62%	4,077 47.93%	4,166 48.69%	-1.42%
Female	4,573 51.97%	4,502 52.38%	4,429 52.07%	4,391 51.31%	-3.98%
Status					
Part-time	6,035 68.59%	5,855 68.12%	5,769 67.82%	5,754 67.24%	-4.66%
Full-time ³	2,764 31.41%	2,740 31.88%	2,737 32.18%	2,803 32.76%	1.41%
Ethnicity					
White	5,106 58.03%	4,952 57.61%	4,834 56.83%	4,819 56.32%	-5.62%
Hispanic	1,845 20.97%	1,836 21.36%	1,816 21.35%	1,880 21.97%	1.90%
Black	756 8.59%	755 8.78%	776 9.12%	757 8.85%	0.13%
Asian/Pacific Islander	612 6.96%	596 6.93%	651 7.65%	744 8.69%	21.57%
Am. Indian/Alaskan Native	75 0.85%	74 0.86%	78 0.92%	74 0.86%	-1.33%
Non-Resident Alien	266 3.02%	256 2.98%	216 2.54%	166 1.94%	-37.59%
Other/Unknown	139 1.58%	126 1.47%	135 1.59%	117 1.37%	-15.83%
Age					
16 and Under	58 0.66%	50 0.58%	65 0.76%	62 0.72%	6.90%
17	166 1.89%	152 1.77%	146 1.72%	142 1.66%	-14.46%
18	608 6.91%	631 7.34%	646 7.59%	681 7.96%	12.01%
19-21	2,685 30.51%	2,551 29.68%	2,581 30.34%	2,687 31.40%	0.07%
22-24	1,645 18.70%	1,621 18.86%	1,519 17.86%	1,548 18.09%	-5.90%
25-30	1,814 20.62%	1,811 21.07%	1,796 21.11%	1,727 20.18%	-4.80%
31-35	741 8.42%	684 7.96%	674 7.92%	638 7.46%	-13.90%
36-50	894 10.16%	908 10.56%	889 10.45%	880 10.28%	-1.57%
51-64	164 1.86%	167 1.94%	168 1.98%	167 1.95%	1.83%
65 and Over	24 0.27%	20 0.23%	22 0.26%	25 0.29%	4.17%
Average Age	25.80	25.87	25.79	25.65	-0.58%

¹ Full-time Student Equivalent (FTSE) is based on 15 SCH.

² Other includes students with tuition exemptions and waivers.

³ Full-time - 12 credit hours or more.

NOTES: Students who attend multiple locations are counted once at each location. Percents may not add to 100 due to rounding.

Source: Spring 12th Class Day Data

**Student Headcount
Pinnacle Campus
Spring 2005 - 2008**

	Spring 2005	Spring 2006	Spring 2007	Spring 2008	05-08 % chg
Student Headcount	3,241	3,147	2,785	2,792	-13.85%
Credit Hours	19,847	19,435	16,563	16,705	-15.83%
Average Credit Hours	6.12	6.18	5.95	5.98	-2.30%
Contact Hours	365,472	357,672	304,000	302,720	-17.17%
Average Contact Hours	112.77	113.65	109.16	108.42	-3.85%
Full-time Student Equivalent (FTSE)¹	1,323	1,296	1,104	1,114	-15.83%
Residency					
In-District	2,397 73.96%	2,443 77.63%	2,107 75.66%	2,128 76.22%	-11.22%
Out-of-District	766 23.63%	625 19.86%	596 21.40%	608 21.78%	-20.63%
Out-of-State/International	50 1.54%	66 2.10%	68 2.44%	37 1.33%	-26.00%
Other ²	28 0.86%	13 0.41%	14 0.50%	19 0.68%	-32.14%
Gender					
Male	1,437 44.34%	1,392 44.23%	1,259 45.21%	1,265 45.31%	-11.97%
Female	1,804 55.66%	1,755 55.77%	1,526 54.79%	1,527 54.69%	-15.35%
Status					
Part-time	2,149 66.31%	2,099 66.70%	1,860 66.79%	1,817 65.08%	-15.45%
Full-time ³	1,092 33.69%	1,048 33.30%	925 33.21%	975 34.92%	-10.71%
Ethnicity					
White	2,186 67.45%	2,078 66.03%	1,830 65.71%	1,873 67.08%	-14.32%
Hispanic	721 22.25%	736 23.39%	649 23.30%	623 22.31%	-13.59%
Black	81 2.50%	102 3.24%	111 3.99%	92 3.30%	13.58%
Asian/Pacific Islander	107 3.30%	97 3.08%	88 3.16%	106 3.80%	-0.93%
Am. Indian/Alaskan Native	32 0.99%	30 0.95%	25 0.90%	24 0.86%	-25.00%
Non-Resident Alien	49 1.51%	53 1.68%	43 1.54%	34 1.22%	-30.61%
Other/Unknown	65 2.01%	51 1.62%	39 1.40%	40 1.43%	-38.46%
Age					
16 and Under	24 0.74%	28 0.89%	47 1.69%	42 1.50%	75.00%
17	102 3.15%	88 2.80%	88 3.16%	114 4.08%	11.76%
18	357 11.02%	313 9.95%	290 10.41%	306 10.96%	-14.29%
19-21	1,223 37.74%	1,181 37.53%	1,018 36.55%	1,108 39.68%	-9.40%
22-24	558 17.22%	582 18.49%	520 18.67%	446 15.97%	-20.07%
25-30	487 15.03%	465 14.78%	432 15.51%	425 15.22%	-12.73%
31-35	180 5.55%	196 6.23%	152 5.46%	126 4.51%	-30.00%
36-50	263 8.11%	244 7.75%	181 6.50%	185 6.63%	-29.66%
51-64	41 1.27%	46 1.46%	52 1.87%	38 1.36%	-7.32%
65 and Over	6 0.19%	4 0.13%	5 0.18%	2 0.07%	-66.67%
Average Age	24.10	24.20	24.04	23.58	-2.16%

¹ Full-time Student Equivalent (FTSE) is based on 15 SCH.

² Other includes students with tuition exemptions and waivers.

³ Full-time - 12 credit hours or more.

NOTES: Students who attend multiple locations are counted once at each location. Percents may not add to 100 due to rounding.

Source: Spring 12th Class Day Data

Student Headcount Rio Grande Campus Spring 2005 - 2008

	Spring 2005	Spring 2006	Spring 2007	Spring 2008	05-08 % chg
Student Headcount	7,148	6,836	6,709	6,671	-6.67%
Credit Hours	43,664	42,241	41,212	41,108	-5.85%
Average Credit Hours	6.11	6.18	6.14	6.16	0.88%
Contact Hours	827,584	801,256	786,784	781,272	-5.60%
Average Contact Hours	115.78	117.21	117.27	117.11	1.15%
Full-time Student Equivalent (FTSE)¹	2,911	2,816	2,747	2,741	-5.85%
Residency					
In-District	5,729 80.15%	5,604 81.98%	5,427 80.89%	5,440 81.55%	-5.04%
Out-of-District	1,079 15.10%	923 13.50%	954 14.22%	920 13.79%	-14.74%
Out-of-State/International	163 2.28%	153 2.24%	178 2.65%	139 2.08%	-14.72%
Other ²	177 2.48%	156 2.28%	150 2.24%	172 2.58%	-2.82%
Gender					
Male	3,238 45.30%	3,098 45.32%	3,092 46.09%	3,145 47.14%	-2.87%
Female	3,910 54.70%	3,738 54.68%	3,617 53.91%	3,526 52.86%	-9.82%
Status					
Part-time	4,633 64.82%	4,408 64.48%	4,357 64.94%	4,247 63.66%	-8.33%
Full-time ³	2,515 35.18%	2,428 35.52%	2,352 35.06%	2,424 36.34%	-3.62%
Ethnicity					
White	4,452 62.28%	4,179 61.13%	4,129 61.54%	4,113 61.65%	-7.61%
Hispanic	1,480 20.71%	1,503 21.99%	1,439 21.45%	1,401 21.00%	-5.34%
Black	415 5.81%	407 5.95%	410 6.11%	404 6.06%	-2.65%
Asian/Pacific Islander	350 4.90%	359 5.25%	404 6.02%	435 6.52%	24.29%
Am. Indian/Alaskan Native	67 0.94%	52 0.76%	62 0.92%	77 1.15%	14.93%
Non-Resident Alien	259 3.62%	225 3.29%	178 2.65%	153 2.29%	-40.93%
Other/Unknown	125 1.75%	111 1.62%	87 1.30%	88 1.32%	-29.60%
Age					
16 and Under	30 0.42%	28 0.41%	31 0.46%	34 0.51%	13.33%
17	90 1.26%	74 1.08%	99 1.48%	92 1.38%	2.22%
18	392 5.48%	411 6.01%	399 5.95%	389 5.83%	-0.77%
19-21	2,425 33.93%	2,272 33.24%	2,319 34.57%	2,358 35.35%	-2.76%
22-24	1,487 20.80%	1,436 21.01%	1,288 19.20%	1,294 19.40%	-12.98%
25-30	1,433 20.05%	1,372 20.07%	1,337 19.93%	1,358 20.36%	-5.23%
31-35	539 7.54%	486 7.11%	506 7.54%	462 6.93%	-14.29%
36-50	594 8.31%	610 8.92%	594 8.85%	535 8.02%	-9.93%
51-64	147 2.06%	129 1.89%	118 1.76%	136 2.04%	-7.48%
65 and Over	11 0.15%	18 0.26%	18 0.27%	13 0.19%	18.18%
Average Age	25.40	25.48	25.39	25.21	-0.75%

¹ Full-time Student Equivalent (FTSE) is based on 15 SCH.

² Other includes students with tuition exemptions and waivers.

³ Full-time - 12 credit hours or more.

NOTES: Students who attend multiple locations are counted once at each location. Percents may not add to 100 due to rounding.

Source: Spring 12th Class Day Data

**Student Headcount
Riverside Campus
Spring 2005 - 2008**

	Spring 2005	Spring 2006	Spring 2007	Spring 2008	05-08 % chg
Student Headcount	6,305	6,270	6,194	6,056	-3.95%
Credit Hours	38,528	39,108	38,752	36,704	-4.73%
Average Credit Hours	6.11	6.24	6.26	6.06	-0.82%
Contact Hours	751,928	761,376	757,984	722,560	-3.91%
Average Contact Hours	119.26	121.43	122.37	119.31	0.05%
Full-time Student Equivalent (FTSE)¹	2,569	2,607	2,583	2,447	-4.73%
Residency					
In-District	4,868 77.21%	4,964 79.17%	4,785 77.25%	4,722 77.97%	-3.00%
Out-of-District	1,219 19.33%	1,091 17.40%	1,185 19.13%	1,174 19.39%	-3.69%
Out-of-State/International	101 1.60%	114 1.82%	122 1.97%	71 1.17%	-29.70%
Other ²	117 1.86%	101 1.61%	102 1.65%	89 1.47%	-23.93%
Gender					
Male	2,934 46.53%	2,940 46.89%	3,076 49.66%	2,960 48.88%	0.89%
Female	3,371 53.47%	3,330 53.11%	3,118 50.34%	3,096 51.12%	-8.16%
Status					
Part-time	4,232 67.12%	4,186 66.76%	4,063 65.60%	3,991 65.90%	-5.69%
Full-time ³	2,073 32.88%	2,084 33.24%	2,131 34.40%	2,065 34.10%	-0.39%
Ethnicity					
White	3,227 51.18%	3,165 50.48%	3,026 48.85%	2,927 48.33%	-9.30%
Hispanic	1,926 30.55%	1,923 30.67%	2,038 32.90%	2,015 33.27%	4.62%
Black	558 8.85%	606 9.67%	587 9.48%	544 8.98%	-2.51%
Asian/Pacific Islander	270 4.28%	246 3.92%	248 4.00%	296 4.89%	9.63%
Am. Indian/Alaskan Native	45 0.71%	48 0.77%	45 0.73%	64 1.06%	42.22%
Non-Resident Alien	167 2.65%	170 2.71%	160 2.58%	109 1.80%	-34.73%
Other/Unknown	112 1.78%	112 1.79%	90 1.45%	101 1.67%	-9.82%
Age					
16 and Under	18 0.29%	13 0.21%	15 0.24%	17 0.28%	-5.56%
17	70 1.11%	79 1.26%	79 1.28%	71 1.17%	1.43%
18	411 6.52%	435 6.94%	467 7.54%	434 7.17%	5.60%
19-21	2,163 34.31%	2,256 35.98%	2,253 36.37%	2,221 36.67%	2.68%
22-24	1,230 19.51%	1,176 18.76%	1,175 18.97%	1,137 18.77%	-7.56%
25-30	1,141 18.10%	1,124 17.93%	1,072 17.31%	1,039 17.16%	-8.94%
31-35	486 7.71%	422 6.73%	404 6.52%	425 7.02%	-12.55%
36-50	629 9.98%	630 10.05%	571 9.22%	558 9.21%	-11.29%
51-64	143 2.27%	122 1.95%	141 2.28%	139 2.30%	-2.80%
65 and Over	14 0.22%	13 0.21%	17 0.27%	15 0.25%	7.14%
Average Age	25.70	25.43	25.29	25.36	-1.32%

¹ Full-time Student Equivalent (FTSE) is based on 15 SCH.
² Other includes students with tuition exemptions and waivers.
³ Full-time - 12 credit hours or more.

NOTES: Students who attend multiple locations are counted once at each location. Percents may not add to 100 due to rounding.

Source: Spring 12th Class Day Data

Student Headcount South Austin Campus¹ Spring 2007 - 2008

	Spring 2007	Spring 2008	07-08 % chg
Student Headcount	2,215	2,544	14.85%
Credit Hours	11,203	12,768	13.97%
Average Credit Hours	5.06	5.02	-0.77%
Contact Hours	212,608	241,032	13.37%
Average Contact Hours	95.99	94.75	-1.29%
Full-time Student Equivalent (FTSE)²	747	851	13.97%
Residency			
In-District	1,783 80.50%	2,045 80.39%	14.69%
Out-of-District	382 17.25%	443 17.41%	15.97%
Out-of-State/International	36 1.63%	32 1.26%	-11.11%
Other ³	14 0.63%	24 0.94%	71.43%
Gender			
Male	933 42.12%	1,087 42.73%	16.51%
Female	1,282 57.88%	1,457 57.27%	13.65%
Status			
Part-time	1,493 67.40%	1,774 69.73%	18.82%
Full-time ⁴	722 32.60%	770 30.27%	6.65%
Ethnicity			
White	1,136 51.29%	1,297 50.98%	14.17%
Hispanic	774 34.94%	892 35.06%	15.25%
Black	118 5.33%	164 6.45%	38.98%
Asian/Pacific Islander	84 3.79%	97 3.81%	15.48%
Am. Indian/Alaskan Native	23 1.04%	33 1.30%	43.48%
Non-Resident Alien	43 1.94%	27 1.06%	-37.21%
Other/Unknown	37 1.67%	34 1.34%	-8.11%
Age			
16 and Under	11 0.50%	39 1.53%	254.55%
17	38 1.72%	50 1.97%	31.58%
18	182 8.22%	199 7.82%	9.34%
19-21	779 35.17%	892 35.06%	14.51%
22-24	400 18.06%	454 17.85%	13.50%
25-30	405 18.28%	449 17.65%	10.86%
31-35	145 6.55%	169 6.64%	16.55%
36-50	209 9.44%	239 9.39%	14.35%
51-64	43 1.94%	49 1.93%	13.95%
65 and Over	3 0.14%	4 0.16%	33.33%
Average Age	25.13	25.02	-0.44%

¹ The South Austin Campus opened Fall 2006.

² Full-time Student Equivalent (FTSE) is based on 15 SCH.

³ Other includes students with tuition exemptions and waivers.

⁴ Full-time - 12 credit hours or more.

NOTES: Students who attend multiple locations are counted once at each location. Percents may not add to 100 due to rounding.

Source: Spring 12th Class Day Data

**Student Headcount
Telecommunicated Instruction¹
Spring 2005 - 2008**

	Spring 2005	Spring 2006	Spring 2007	Spring 2008	05-08 % chg
Student Headcount	6,196	6,320	6,268	6,981	12.67%
Credit Hours	28,388	28,820	29,191	32,891	15.86%
Average Credit Hours	4.58	4.56	4.66	4.71	2.83%
Contact Hours	498,288	503,200	517,880	594,000	19.21%
Average Contact Hours	80.42	79.62	82.62	85.09	5.80%
Full-time Student Equivalent (FTSE)²	1,893	1,921	1,946	2,193	15.86%
Residency					
In-District	4,356 70.30%	4,606 72.88%	4,470 71.31%	4,979 71.32%	14.30%
Out-of-District	1,634 26.37%	1,533 24.26%	1,629 25.99%	1,829 26.20%	11.93%
Out-of-State/International	114 1.84%	112 1.77%	95 1.52%	88 1.26%	-22.81%
Other ³	92 1.48%	69 1.09%	74 1.18%	85 1.22%	-7.61%
Gender					
Male	2,112 34.09%	2,209 34.95%	2,128 33.95%	2,332 33.40%	10.42%
Female	4,084 65.91%	4,111 65.05%	4,140 66.05%	4,649 66.60%	13.83%
Status					
Part-time	4,370 70.53%	4,444 70.32%	4,525 72.19%	4,996 71.57%	14.32%
Full-time ⁴	1,826 29.47%	1,876 29.68%	1,743 27.81%	1,985 28.43%	8.71%
Ethnicity					
White	3,994 64.46%	4,051 64.10%	3,968 63.31%	4,449 63.73%	11.39%
Hispanic	1,115 18.00%	1,150 18.20%	1,201 19.16%	1,327 19.01%	19.01%
Black	469 7.57%	523 8.28%	524 8.36%	589 8.44%	25.59%
Asian/Pacific Islander	318 5.13%	327 5.17%	321 5.12%	370 5.30%	16.35%
Am. Indian/Alaskan Native	67 1.08%	52 0.82%	62 0.99%	57 0.82%	-14.93%
Non-Resident Alien	146 2.36%	128 2.03%	119 1.90%	115 1.65%	-21.23%
Other/Unknown	87 1.40%	89 1.41%	73 1.16%	74 1.06%	-14.94%
Age					
16 and Under	36 0.58%	38 0.60%	48 0.77%	64 0.92%	77.78%
17	121 1.95%	133 2.10%	124 1.98%	140 2.01%	15.70%
18	213 3.44%	243 3.84%	196 3.13%	266 3.81%	24.88%
19-21	1,605 25.90%	1,618 25.60%	1,487 23.72%	1,607 23.02%	0.12%
22-24	1,188 19.17%	1,172 18.54%	1,164 18.57%	1,267 18.15%	6.65%
25-30	1,402 22.63%	1,427 22.58%	1,501 23.95%	1,677 24.02%	19.61%
31-35	708 11.43%	691 10.93%	702 11.20%	810 11.60%	14.41%
36-50	793 12.80%	863 13.66%	920 14.68%	1,001 14.34%	26.23%
51-64	124 2.00%	130 2.06%	119 1.90%	141 2.02%	13.71%
65 and Over	6 0.10%	5 0.08%	7 0.11%	8 0.11%	33.33%
Average Age	27.00	27.07	27.39	27.38	1.41%

¹ Prior to Spring 2006, Telecommunicated instruction included courses offered in the following formats: Instructional Television, Personal Computer with Modem, Print-Based using a textbook, Directed Learning, and Interactive Video Class.

² Full-time Student Equivalent (FTSE) is based on 15 SCH.

³ Other includes students with tuition exemptions and waivers.

⁴ Full-time - 12 credit hours or more.

NOTES: Students who attend multiple locations are counted once at each location. Percents may not add to 100 due to rounding.

Source: Spring 12th Class Day Data

Student Headcount Site-Based¹ Summary Spring 2005 - 2008

	Spring 2005	Spring 2006	Spring 2007	Spring 2008	05-08 % chg
Student Headcount	996	1,233	1,444	1,551	55.72%
Credit Hours	3,511	4,485	4,964	5,780	64.63%
Average Credit Hours	3.53	3.64	3.44	3.73	5.72%
Contact Hours	75,584	94,280	100,144	120,992	60.08%
Average Contact Hours	75.89	76.46	69.35	78.01	2.80%
Full-time Student Equivalent (FTSE)²	234	299	331	385	64.63%
Residency					
In-District	543 54.52%	684 55.47%	882 61.08%	882 56.87%	62.43%
Out-of-District	422 42.37%	516 41.85%	546 37.81%	651 41.97%	54.27%
Out-of-State/International	24 2.41%	24 1.95%	8 0.55%	10 0.64%	-58.33%
Other ²	7 0.70%	9 0.73%	8 0.55%	8 0.52%	14.29%
Gender					
Male	445 44.68%	569 46.15%	610 42.24%	703 45.33%	57.98%
Female	551 55.32%	664 53.85%	834 57.76%	848 54.67%	53.90%
Status					
Part-time	825 82.83%	1,091 88.48%	1,273 88.16%	1,368 88.20%	65.82%
Full-time ³	171 17.17%	142 11.52%	171 11.84%	183 11.80%	7.02%
Ethnicity					
White	657 65.96%	838 67.96%	932 64.54%	1,013 65.31%	54.19%
Hispanic	201 20.18%	244 19.79%	306 21.19%	310 19.99%	54.23%
Black	65 6.53%	79 6.41%	110 7.62%	118 7.61%	81.54%
Asian/Pacific Islander	33 3.31%	39 3.16%	53 3.67%	56 3.61%	69.70%
Am. Indian/Alaskan Native	6 0.60%	7 0.57%	11 0.76%	17 1.10%	183.33%
Non-Resident Alien	16 1.61%	11 0.89%	13 0.90%	17 1.10%	6.25%
Other/Unknown	18 1.81%	15 1.22%	19 1.32%	20 1.29%	11.11%
Age					
16 and Under	87 8.73%	126 10.22%	230 15.93%	195 12.57%	124.14%
17	250 25.10%	295 23.93%	393 27.22%	533 34.36%	113.20%
18	109 10.94%	193 15.65%	192 13.30%	251 16.18%	130.28%
19-21	132 13.25%	130 10.54%	145 10.04%	141 9.09%	6.82%
22-24	102 10.24%	121 9.81%	117 8.10%	104 6.71%	1.96%
25-30	136 13.65%	158 12.81%	150 10.39%	138 8.90%	1.47%
31-35	69 6.93%	78 6.33%	75 5.19%	50 3.22%	-27.54%
36-50	80 8.03%	114 9.25%	117 8.10%	102 6.58%	27.50%
51-64	23 2.31%	17 1.38%	23 1.59%	27 1.74%	17.39%
65 and Over	8 0.80%	1 0.08%	2 0.14%	10 0.64%	25.00%
Average Age	23.90	23.17	22.36	21.77	-8.91%

¹ Site-based instruction includes various credit and non-credit classes and training offered or provided to businesses, government entities, high schools, correctional institutions, and community groups.

² Full-time Student Equivalent (FTSE) is based on 15 SCH.

³ Other includes students with tuition exemptions and waivers.

⁴ Full-time - 12 credit hours or more.

Source: Spring 12th Class Day Data

Student Headcount Centers¹ Summary Spring 2005 - 2008

	Spring 2005	Spring 2006	Spring 2007	Spring 2008	05-08 % chg
Student Headcount²	1,356	1,928	2,057	2,436	79.65%
Credit Hours	6,093	9,166	10,225	12,046	97.70%
Average Credit Hours	4.49	4.75	4.97		-100.00%
Contact Hours	104,528	155,248	175,832	203,912	95.08%
Average Contact Hours	77.09	80.52	85.48		-100.00%
Full-time Student Equivalent (FTSE)³	406	611	682	803	97.70%
Residency					
In-District	278 20.50%	418 21.68%	387 18.81%	492 20.20%	76.98%
Out-of-District	1,061 78.24%	1,477 76.61%	1,638 79.63%	1,917 78.69%	80.68%
Out-of-State/International	16 1.18%	26 1.35%	30 1.46%	21 0.86%	31.25%
Other ⁴	1 0.07%	7 0.36%	2 0.10%	6 0.25%	500.00%
Gender					
Male	482 35.55%	751 38.95%	792 38.50%	940 38.59%	95.02%
Female	874 64.45%	1,177 61.05%	1,265 61.50%	1,496 61.41%	71.17%
Status					
Part-time	1,121 82.67%	1,510 78.32%	1,565 76.08%	1,865 76.56%	66.37%
Full-time ⁵	235 17.33%	418 21.68%	492 23.92%	571 23.44%	142.98%
Ethnicity					
White	921 67.92%	1,322 68.57%	1,332 64.75%	1,559 64.00%	69.27%
Hispanic	308 22.71%	438 22.72%	510 24.79%	605 24.84%	96.43%
Black	42 3.10%	68 3.53%	112 5.44%	151 6.20%	259.52%
Asian/Pacific Islander	14 1.03%	36 1.87%	41 1.99%	49 2.01%	250.00%
Am. Indian/Alaskan Native	8 0.59%	18 0.93%	26 1.26%	27 1.11%	237.50%
Non-Resident Alien	5 0.37%	12 0.62%	13 0.63%	13 0.53%	160.00%
Other/Unknown	58 4.28%	34 1.76%	23 1.12%	32 1.31%	-44.83%
Age					
16 and Under	93 6.86%	104 5.39%	135 6.56%	162 6.65%	74.19%
17	247 18.22%	279 14.47%	313 15.22%	421 17.28%	70.45%
18	190 14.01%	283 14.68%	303 14.73%	366 15.02%	92.63%
19-21	327 24.12%	523 27.13%	606 29.46%	627 25.74%	91.74%
22-24	160 11.80%	219 11.36%	223 10.84%	238 9.77%	48.75%
25-30	133 9.81%	220 11.41%	196 9.53%	249 10.22%	87.22%
31-35	72 5.31%	92 4.77%	100 4.86%	114 4.68%	58.33%
36-50	107 7.89%	190 9.85%	157 7.63%	237 9.73%	121.50%
51-64	27 1.99%	17 0.88%	23 1.12%	21 0.86%	-22.22%
65 and Over	0 0.00%	1 0.05%	1 0.05%	1 0.04%	.
Average Age	23.00	23.19	22.56	22.90	-0.43%

¹ Centers include non-campus locations that are staffed, have regular posted hours, and offer credit courses every semester.

² Students that attend more than one extension center are counted only once in the Center Total; therefore, this total is unduplicated and will not match the sum of all of the extension centers.

³ Full-time Student Equivalent (FTSE) is based on 15 SCH.

⁴ Other includes students with tuition exemptions and waivers.

⁵ Full-time - 12 credit hours or more.

Source: Spring 12th Class Day Data

Student Headcount Centers¹ by Location Spring 2008

	Bastrop	Fredericksburg	Georgetown	Hays	Leander
Student Headcount	163	296	174	143	88
Credit Hours	693	1,469	768	474	287
Average Credit Hours	4.25	4.96	4.41	3.31	3.26
Contact Hours	11,088	26,960	12,432	7,776	4,736
Average Contact Hours	68.02	91.08	71.45	54.38	53.82
Full-time Student Equivalent (FTSE)²	46	98	51	32	19
Residency					
In-District	20 12.27%	8 2.70%	16 9.20%	29 20.28%	84 95.45%
Out-of-District	143 87.73%	286 96.62%	156 89.66%	112 78.32%	3 3.41%
Out-of-State/International	0 0.00%	2 0.68%	1 0.57%	2 1.40%	1 1.14%
Other ³	0 0.00%	0 0.00%	1 0.57%	0 0.00%	0 0.00%
Gender					
Male	45 27.61%	93 31.42%	65 37.36%	48 33.57%	25 28.41%
Female	118 72.39%	203 68.58%	109 62.64%	95 66.43%	63 71.59%
Ethnicity					
White	113 69.33%	227 76.69%	143 82.18%	86 60.14%	58 65.91%
Hispanic	32 19.63%	56 18.92%	20 11.49%	46 32.17%	15 17.05%
Black	11 6.75%	1 0.34%	4 2.30%	7 4.90%	8 9.09%
Asian/Pacific Islander	4 2.45%	2 0.68%	2 1.15%	2 1.40%	1 1.14%
Am. Indian/Alaskan Native	1 0.61%	5 1.69%	2 1.15%	1 0.70%	1 1.14%
Non-Resident Alien	0 0.00%	0 0.00%	2 1.15%	0 0.00%	0 0.00%
Other/Unknown	2 1.23%	5 1.69%	1 0.57%	1 0.70%	5 5.68%
Age					
16 and Under	25 15.34%	31 10.47%	38 21.84%	3 2.10%	11 12.50%
17	50 30.67%	70 23.65%	64 36.78%	36 25.17%	39 44.32%
18	30 18.40%	42 14.19%	30 17.24%	34 23.78%	20 22.73%
19-21	30 18.40%	57 19.26%	8 4.60%	22 15.38%	6 6.82%
22-24	8 4.91%	17 5.74%	11 6.32%	17 11.89%	1 1.14%
25-30	8 4.91%	26 8.78%	4 2.30%	10 6.99%	6 6.82%
31-35	4 2.45%	15 5.07%	8 4.60%	6 4.20%	3 3.41%
36-50	7 4.29%	32 10.81%	11 6.32%	14 9.79%	2 2.27%
51-64	1 0.61%	6 2.03%	0 0.00%	1 0.70%	0 0.00%
65 and Over	0 0.00%	0 0.00%	0 0.00%	0 0.00%	0 0.00%
Average Age	19.93	23.08	20.09	22.45	19.25

¹ Centers include non-campus locations that are staffed, have regular posted hours, and offer credit courses every semester.

² Full-time Student Equivalent (FTSE) is based on 15 SCH.

³ Other includes students with tuition exemptions and waivers.

NOTES: Students are counted once for each location they attend. Percents may not add to 100 due to rounding.

Source: Spring 12th Class Day Data

**Student Headcount
Centers¹ by Location (continued)
Spring 2008**

	Lockhart	Round Rock Higher Education Center	San Marcos Center	San Marcos Day Classes
Student Headcount	124	1,021	367	166
Credit Hours	627	5,259	1,546	923
Average Credit Hours	5.06	5.15	4.21	5.56
Contact Hours	10,032	89,400	26,464	15,024
Average Contact Hours	80.90	87.56	72.11	90.51
Full-time Student Equivalent (FTSE)²	42	351	103	62
Residency				
In-District	1 0.81%	289 28.31%	39 10.63%	16 9.64%
Out-of-District	122 98.39%	714 69.93%	327 89.10%	149 89.76%
Out-of-State/International	1 0.81%	12 1.18%	1 0.27%	1 0.60%
Other ³	0 0.00%	6 0.59%	0 0.00%	0 0.00%
Gender				
Male	55 44.35%	417 40.84%	163 44.41%	82 49.40%
Female	69 55.65%	607 59.45%	204 55.59%	84 50.60%
Ethnicity				
White	65 52.42%	621 60.82%	210 57.22%	104 62.65%
Hispanic	47 37.90%	237 23.21%	130 35.42%	55 33.13%
Black	8 6.45%	97 9.50%	14 3.81%	3 1.81%
Asian/Pacific Islander	3 2.42%	33 3.23%	3 0.82%	0 0.00%
Am. Indian/Alaskan Native	1 0.81%	9 0.88%	7 1.91%	1 0.60%
Non-Resident Alien	0 0.00%	10 0.98%	1 0.27%	1 0.60%
Other/Unknown	0 0.00%	14 1.37%	2 0.54%	2 1.20%
Age				
16 and Under	30 24.19%	10 0.98%	13 3.54%	2 1.20%
17	68 54.84%	44 4.31%	50 13.62%	7 4.22%
18	26 20.97%	137 13.42%	32 8.72%	28 16.87%
19-21	0 0.00%	331 32.42%	147 40.05%	81 48.80%
22-24	0 0.00%	123 12.05%	49 13.35%	25 15.06%
25-30	0 0.00%	150 14.69%	39 10.63%	14 8.43%
31-35	0 0.00%	62 6.07%	15 4.09%	3 1.81%
36-50	0 0.00%	151 14.79%	21 5.72%	6 3.61%
51-64	0 0.00%	12 1.18%	1 0.27%	0 0.00%
65 and Over	0 0.00%	1 0.10%	0 0.00%	0 0.00%
Average Age	16.97 .	25.26 .	22.28 .	21.37 .

¹ Centers include non-campus locations that are staffed, have regular posted hours, and offer credit courses every semester.

² Full-time Student Equivalent (FTSE) is based on 15 SCH.

³ Other includes students with tuition exemptions and waivers.

NOTES: Students are counted once for each location they attend. Percents may not add to 100 due to rounding.

Source: Spring 12th Class Day Data

THIS PAGE INTENTIONALLY LEFT BLANK