

Student Demographics

This section can be used for finding:

- student headcount.
- student characteristics statistics.

Contents

Useful Terms	24
Summer 2008	
Student Characteristics District-wide	25
Headcount by Age and Gender	26
Headcount by Ethnicity and Gender	27
Headcount by Day/Evening Classification	28
Headcount by Region and Zip Code	29
Headcount by Zip Code	35
Developmental Education	38
Fall 2008	
Student Characteristics District-wide	43
Full-Time Student Equivalent (FTSE)	44
Headcount by Age and Gender	45
Headcount by Ethnicity and Gender	46
Headcount by Gender and Full/Part-time Status	47
Headcount by Ethnicity and Full/Part-time Status	47
Headcount by Full/Part-time Status	48
Headcount by Day/Evening Classification	49
Headcount by Region and Zip Code	50
Headcount by Zip Code Map	56
Headcount by Zip Code	57
Declared Majors	60
High School Concurrent Enrollment by School District	70
First-Time in College Students	71
Developmental Education	72
Spring 2009	
Student Characteristics District-wide	77
Full-Time Student Equivalent (FTSE)	78
Headcount by Age and Gender	79
Headcount by Ethnicity and Gender	80
Headcount by Day/Evening Classification	81
Headcount by Region and Zip Code	82
Headcount by Zip Code	88
Developmental Education	91

Useful Terms

4th Class Day Data (Second 5½ week session) – total enrollments for all summer classes, as of the 4th day of class of the second 5½ week session.
(Official Reporting Date for the Summer Semester)

12th Class Day Data – total enrollments as of the 12th day of class of the 16 week session.
(Official Reporting Date for the Fall and Spring Semesters.)

Headcount – the number of students enrolled in one or more courses. This number may be duplicated or unduplicated.

High School Concurrent Enrollment – the number of students enrolled in high school (as juniors and seniors) and in college. These students receive college credit and may receive high school graduation credit for the classes they take at ACC.

In-district – students who live within ACC’s tax-paying districts and pay taxes in support of the college and receive lower in-district tuition rates. Students who live or own property within the City of Austin or the Austin, Del Valle, Leander, Manor, or Round Rock Independent School Districts, as well as portions of Eanes and Pflugerville Independent School Districts are considered in-district students.

Out-of-district – students who live outside ACC’s in-district taxing boundaries as identified in the in-district definition. Higher out-of-district tuition rates are charged to out-of-district students.

Reporting Dates – Fall/Spring: 12th Class Day
Summer: 4th Class Day of the second 5½ week session

Telecommunicated Instruction - courses delivered to individuals and groups by synchronous or asynchronous methods. Delivery methods include instructional television (using recorded video programs shown on cable TV and on cassette), personal computer with modem (using Internet and email), print-based courses (using a textbook), directed studies, and live televised classes (to individual students via the Internet or cable television).

**Student Characteristics
District-wide
Summer 2005 - 2008**

	Summer 2005	Summer 2006	Summer 2007	Summer 2008	05-08 % chg
Student Headcount	21,890	22,303	23,311	24,395	11.44%
Credit Hours	116,131	117,877	121,341	126,933	9.30%
Average Credit Hours	5.31	5.29	5.21	5.20	-1.92%
Contact Hours	2,187,352	2,213,584	2,290,712	2,397,152	9.59%
Average Contact Hours	99.92	99.25	98.27	98.26	-1.66%
Residency					
In-District	16,168 73.86%	16,184 72.56%	16,818 72.15%	18,675 76.55%	15.51%
Out-of-District	5,114 23.36%	5,512 24.71%	5,904 25.33%	5,160 21.15%	0.90%
Out-of-State/International	357 1.63%	401 1.80%	350 1.50%	300 1.23%	-15.97%
Other/Unknown ¹	251 1.15%	206 0.92%	239 1.03%	260 1.07%	3.59%
Gender					
Male	8,886 40.59%	9,112 40.86%	9,648 41.39%	10,044 41.17%	13.03%
Female	13,004 59.41%	13,191 59.14%	13,663 58.61%	14,351 58.83%	10.36%
Student Status					
Part-time	11,179 51.07%	11,472 51.44%	12,261 52.60%	12,744 52.24%	14.00%
Full-time ²	10,711 48.93%	10,831 48.56%	11,050 47.40%	11,651 47.76%	8.78%
Ethnicity					
White	13,167 60.15%	13,277 59.53%	13,622 58.44%	14,034 57.53%	6.58%
Black	1,607 7.34%	1,728 7.75%	1,731 7.43%	1,970 8.08%	22.59%
Hispanic	4,391 20.06%	4,547 20.39%	4,869 20.89%	5,300 21.73%	20.70%
Asian/Pacific Islander	1,697 7.75%	1,780 7.98%	2,067 8.87%	2,238 9.17%	31.88%
Am. Indian/Alaskan Native	147 0.67%	160 0.72%	171 0.73%	194 0.80%	31.97%
Non-Resident Alien	489 2.23%	492 2.21%	413 1.77%	323 1.32%	-33.95%
Other/Unknown	392 1.79%	319 1.43%	438 1.88%	336 1.38%	-14.29%
Age					
16 and Under	1,053 4.81%	1,401 6.28%	1,647 7.07%	1,629 6.68%	54.70%
17	1,142 5.22%	1,295 5.81%	1,508 6.47%	1,730 7.09%	51.49%
18	1,070 4.89%	1,084 4.86%	1,140 4.89%	1,040 4.26%	-2.80%
19-21	7,714 35.24%	7,691 34.48%	7,940 34.06%	8,261 33.86%	7.09%
22-24	3,710 16.95%	3,612 16.20%	3,556 15.25%	3,647 14.95%	-1.70%
25-30	3,416 15.61%	3,399 15.24%	3,598 15.43%	3,799 15.57%	11.21%
31-35	1,500 6.85%	1,515 6.79%	1,520 6.52%	1,649 6.76%	9.93%
36-50	1,917 8.76%	1,920 8.61%	1,963 8.42%	2,133 8.74%	11.27%
51-64	339 1.55%	361 1.62%	399 1.71%	464 1.90%	36.87%
65 and Over	29 0.13%	25 0.11%	40 0.17%	43 0.18%	48.28%
Average Age	24.50	24.30	24.25	24.44	-0.24%

¹ Other includes students with tuition exemptions and waivers.

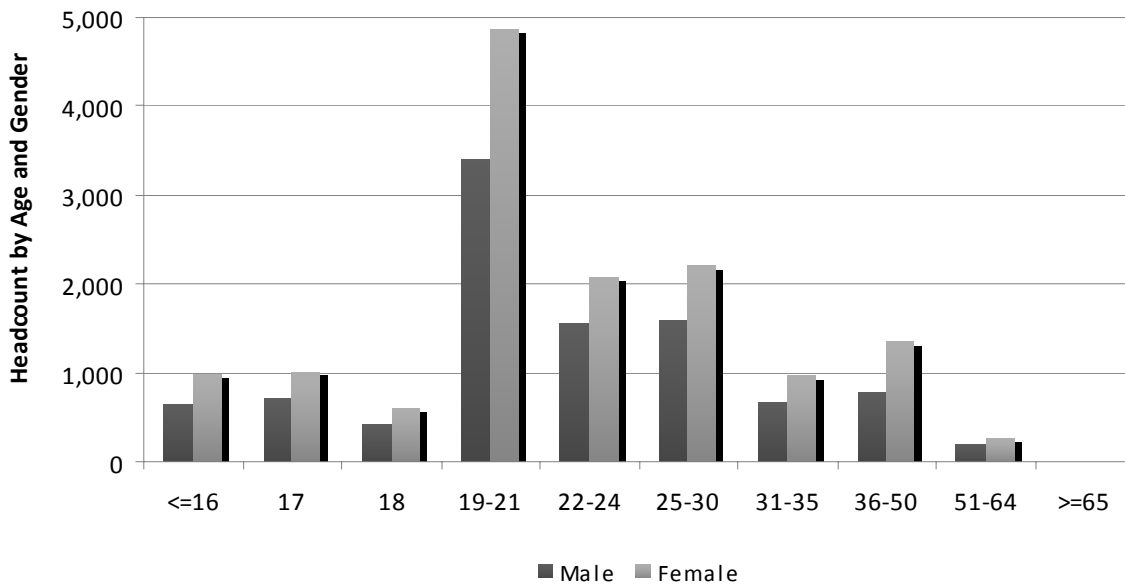
² Full-time - 6 credit hours or more.

NOTE: Percents may not add to 100 due to rounding.

Source: 4th Class Day Data (Second 5½ week session)

Student Characteristics Headcount by Age and Gender Summer 2008

Age	Male		Female		Total	
16 and Under	646	6.43%	983	6.85%	1,629	6.68%
17	726	7.23%	1,004	7.00%	1,730	7.09%
18	432	4.30%	608	4.24%	1,040	4.26%
19-21	3,390	33.75%	4,871	33.94%	8,261	33.86%
22-24	1,565	15.58%	2,082	14.51%	3,647	14.95%
25-30	1,597	15.90%	2,202	15.34%	3,799	15.57%
31-35	680	6.77%	969	6.75%	1,649	6.76%
36-50	784	7.81%	1,349	9.40%	2,133	8.74%
51-64	200	1.99%	264	1.84%	464	1.90%
65 and Over	24	0.24%	19	0.13%	43	0.18%
TOTAL	10,044	100.00%	14,351	100.00%	24,395	100.00%

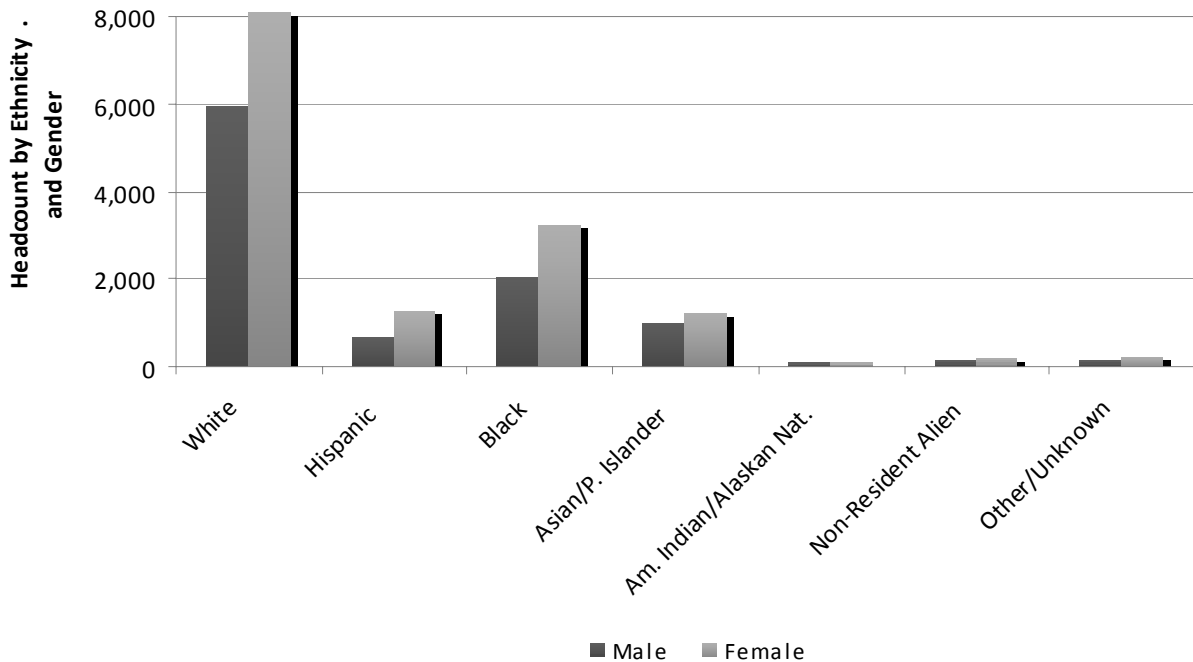


NOTE: Percents may not add to 100 due to rounding.

Source: 4th Class Day Data (Second 5½ week session)

**Student Characteristics
Headcount by Ethnicity and Gender
Summer 2008**

Ethnicity	Male		Female		Total	
White	5,929	59.03%	8,105	56.48%	14,034	57.53%
Black	686	6.83%	1,284	8.95%	1,970	8.08%
Hispanic	2,073	20.64%	3,227	22.49%	5,300	21.73%
Asian/Pacific Islander	991	9.87%	1,247	8.69%	2,238	9.17%
Am. Indian/Alaskan Native	101	1.01%	93	0.65%	194	0.80%
Non-Resident Alien	134	1.33%	189	1.32%	323	1.32%
Other/Unknown	130	1.29%	206	1.44%	336	1.38%
TOTAL	10,044	100.00%	14,351	100.00%	24,395	100.00%



NOTE: Percents may not add to 100 due to rounding.

Source: 4th Class Day Data (Second 5½ week session)

Student Characteristics
Headcount by Day/Evening Classification
Summer 2005 - 2008

Classification	Summer 2005	Summer 2006	Summer 2007	Summer 2008	05-08 % chg
Day	9,263	9,750	10,401	10,776	16.33%
% of Total	42.32%	43.72%	44.62%	44.17%	
Evening	4,250	4,024	4,118	4,270	0.47%
% of Total	19.42%	18.04%	17.67%	17.50%	
Telecommunicated	3,908	4,105	4,343	4,435	13.49%
% of Total	17.85%	18.41%	18.63%	18.18%	
Day & Evening	2,025	1,899	2,015	2,167	7.01%
% of Total	9.25%	8.51%	8.64%	8.88%	
Day & Telecommunicated	1,392	1,426	1,419	1,542	10.78%
% of Total	6.36%	6.39%	6.09%	6.32%	
Evening & Telecommunicated	715	721	636	795	11.19%
% of Total	3.27%	3.23%	2.73%	3.26%	
Day & Evening & Telecommunicated	225	250	219	212	-5.78%
% of Total	1.03%	1.12%	0.94%	0.87%	
Non-identifiable	112	128	160	198	76.79%
% of Total	0.51%	0.57%	0.69%	0.81%	
Total	21,890	22,303	23,311	24,395	11.44%

NOTES: Classifications are mutually exclusive. Day students are enrolled in courses that begin before 5:30 PM and evening students are enrolled in courses that begin at or after 5:30 PM. The "Non-identifiable" category includes self-paced courses and courses without designated meeting times. Percents may not add to 100 due to rounding.

Source: 4th Class Day Data (Second 5½ week session)

Headcount by Region and Zip Code Summer 2005 - 2008

Region	Zip Code	Summer 2005	Summer 2006	Summer 2007	Summer 2008	05-08 %chg
Austin/Travis County, Central						
Austin	78701	129	111	95	93	-27.91%
Austin	78703	335	304	252	281	-16.12%
Austin	78705	1,704	1,607	1,479	1,407	-17.43%
Austin	78712	1	0	0	1	0.00%
Austin	78751	448	422	416	456	1.79%
Austin	78752	236	194	186	209	-11.44%
Austin	78756	118	113	121	104	-11.86%
Austin	78757	362	340	314	282	-22.10%
Total		3,333	3,091	2,863	2,833	-15.00%
% of Grand Total		15.23%	13.86%	12.28%	11.61%	
Austin/Travis County, East						
Austin	78702	287	268	267	270	-5.92%
Austin	78721	128	113	98	149	16.41%
Austin	78722	129	134	131	128	-0.78%
Austin	78723	368	343	285	324	-11.96%
Total		912	858	781	871	-4.50%
% of Grand Total		4.17%	3.85%	3.35%	3.57%	
Austin/Travis County, North						
Austin	78727	424	469	476	511	20.52%
Austin	78728	184	213	191	202	9.78%
Austin	78758	904	809	755	795	-12.06%
Total		1,512	1,491	1,422	1,508	-0.26%
% of Grand Total		6.91%	6.69%	6.10%	6.18%	
Austin/Travis County, Northwest						
Austin	78726	191	220	201	253	32.46%
Austin	78730	79	78	87	83	5.06%
Austin	78731	483	446	415	421	-12.84%
Austin	78750	322	391	429	454	40.99%
Austin	78759	789	706	725	740	-6.21%
Total		1,864	1,841	1,857	1,951	4.67%
% of Grand Total		8.52%	8.25%	7.97%	8.00%	

NOTES: Headcount based on zip code data as reported and entered in the ACC database. Zip code regions are based on definitions developed by ACC administration.

Source: 4th Class Day Data (Second 5½ week session)

**Headcount by Region and Zip Code (continued)
Summer 2005 - 2008**

Region	Zip Code	Summer 2005	Summer 2006	Summer 2007	Summer 2008	05-08 %chg
Austin/Travis County, South						
Manhaca	78652	64	41	54	45	-29.69%
Austin	78704	826	771	728	699	-15.38%
Austin	78745	987	908	941	952	-3.55%
Austin	78748	696	658	590	712	2.30%
Total		2,573	2,378	2,313	2,408	-6.41%
% of Grand Total		11.75%	10.66%	9.92%	9.87%	
Austin/Travis County, Southeast						
Del Valle	78617	113	128	162	160	41.59%
Austin	78719	13	21	25	24	84.62%
Austin	78741	1,411	1,521	1,423	1,353	-4.11%
Austin	78742	4	10	9	10	150.00%
Austin	78744	441	398	427	483	9.52%
Austin	78747	132	130	122	205	55.30%
Total		2,114	2,208	2,168	2,235	5.72%
% of Grand Total		9.66%	9.90%	9.30%	9.16%	
Austin/Travis County, Southwest						
Austin	78735	175	188	186	207	18.29%
Austin	78736	138	145	144	128	-7.25%
Austin	78739	214	261	274	293	36.92%
Austin	78746	393	418	418	348	-11.45%
Austin	78749	729	695	688	662	-9.19%
Total		1,649	1,707	1,710	1,638	-0.67%
% of Grand Total		7.53%	7.65%	7.34%	6.71%	

NOTES: Headcount based on zip code data as reported and entered in the ACC database. Zip code regions are based on definitions developed by ACC administration.

Source: 4th Class Day Data (Secnd 5½ week session)

Headcount by Region and Zip Code (continued) Summer 2005 - 2008

Region	Zip Code	Summer 2005	Summer 2006	Summer 2007	Summer 2008	05-08 %chg
Bastrop County¹						
Bastrop	78602	108	103	103	128	18.52%
Cedar Creek	78612	50	46	50	72	44.00%
Elgin	78621	110	98	115	124	12.73%
McDade	78650	6	8	3	8	33.33%
Paige	78659	6	9	13	11	83.33%
Red Rock	78662	16	12	14	6	-62.50%
Rosanky	78953	3	3	4	4	33.33%
Smithville	78957	29	26	41	38	31.03%
Total		328	305	343	391	19.21%
% of Grand Total		1.50%	1.37%	1.47%	1.60%	
Blanco County¹						
Blanco	78606	22	38	37	25	13.64%
Hye	78635	1	0	1	2	100.00%
Johnson City	78636	34	34	29	18	-47.06%
Round Mountain	78663	3	5	3	2	-33.33%
Total		60	77	70	47	-21.67%
% of Grand Total		0.27%	0.35%	0.30%	0.19%	
Burnet County¹						
Bertram	78605	6	6	13	7	16.67%
Briggs	78608	0	0	1	1	.
Burnet	78611	14	13	9	6	-57.14%
Marble Falls	78654	10	20	16	12	20.00%
Total		30	39	39	26	-13.33%
% of Grand Total		0.14%	0.17%	0.17%	0.11%	

¹ These numbers do not represent total enrollment for the county due to zip codes that span more than one county.

NOTES: Headcount based on zip code data as reported and entered in the ACC database. Zip code regions are based on definitions developed by ACC administration.

Source: 4th Class Day Data (Second 5½ week session)

**Headcount by Region and Zip Code (continued)
Summer 2005 - 2008**

Region	Zip Code	Summer 2005	Summer 2006	Summer 2007	Summer 2008	05-08 %chg
Caldwell County¹						
Dale	78616	17	23	20	31	82.35%
Lockhart	78644	74	60	71	79	6.76%
Luling	78648	12	11	8	36	200.00%
Martindale	78655	14	12	14	9	-35.71%
Maxwell	78656	12	4	7	6	-50.00%
Total		129	110	120	161	24.81%
% of Grand Total		0.59%	0.49%	0.51%	0.66%	
Cedar Park/Leander						
Cedar Park	78613	849	942	877	1,065	25.44%
Leander	78641	503	460	442	570	13.32%
Liberty Hill	78642	30	28	28	48	60.00%
Total		1,382	1,430	1,347	1,683	21.78%
% of Grand Total		6.31%	6.41%	5.78%	6.90%	
Georgetown/North Williamson County						
Florence	76527	5	5	10	9	80.00%
Granger	76530	1	5	8	4	300.00%
Jarrell	76537	9	12	10	15	66.67%
Georgetown	78626	95	114	102	125	31.58%
Georgetown	78628	191	242	231	194	1.57%
Georgetown	78633	0	0	1	29	.
Total		301	378	362	376	24.92%
% of Grand Total		1.38%	1.69%	1.55%	1.54%	
Gillespie County¹						
Doss	78618	4	2	4	4	0.00%
Fredericksburg	78624	158	172	161	182	15.19%
Harper	78631	35	39	34	34	-2.86%
Stonewall	78671	6	3	5	6	0.00%
Willow City	78675	1	1	3	1	0.00%
Total		204	217	207	227	11.27%
% of Grand Total		0.93%	0.97%	0.89%	0.93%	

¹ These numbers do not represent total enrollment for the county due to zip codes that span more than one county.

NOTES: Headcount based on zip code data as reported and entered in the ACC database. Zip code regions are based on definitions developed by ACC administration.

Source: 4th Class Day Data (Second 5½ week session)

Headcount by Region and Zip Code (continued) Summer 2005 - 2008

Region	Zip Code	Summer 2005	Summer 2006	Summer 2007	Summer 2008	05-08 %chg
Gonzales County						
Nixon	78140	0	0	1	0	.
Cost	78614	1	2	1	2	100.00%
Gonzales	78629	9	11	5	5	-44.44%
Total		10	13	7	7	-30.00%
%of Grand Total		0.05%	0.06%	0.03%	0.03%	
Hays County¹						
Buda	78610	129	134	135	158	22.48%
Driftwood	78619	21	13	12	13	-38.10%
Dripping Springs	78620	75	85	80	99	32.00%
Kyle	78640	136	165	166	177	30.15%
San Marcos	78666	360	337	337	353	-1.94%
San Marcos	78667	19	16	6	7	-63.16%
Wimberley	78676	42	46	40	50	19.05%
Austin	78737	120	132	112	130	8.33%
Total		902	928	888	987	9.42%
%of Grand Total		4.12%	4.16%	3.81%	4.05%	
Manor/East Travis County						
Manor	78653	150	168	153	213	42.00%
Austin	78724	134	140	147	141	5.22%
Austin	78725	51	58	83	80	56.86%
Total		335	366	383	434	29.55%
%of Grand Total		1.53%	1.64%	1.64%	1.78%	
Pflugerville/Northeast Travis County						
Pflugerville	78660	502	562	572	631	25.70%
Austin	78753	586	619	567	602	2.73%
Austin	78754	161	182	175	204	26.71%
Total		1,249	1,363	1,314	1,437	15.05%
%of Grand Total		5.71%	6.11%	5.64%	5.89%	

¹ These numbers do not represent total enrollment for the county due to zip codes that span more than one county.

NOTES: Headcount based on zip code data as reported and entered in the ACC database. Zip code regions are based on definitions developed by ACC administration.

Source: 4th Class Day Data (Second 5½ week session)

**Headcount by Region and Zip Code (continued)
Summer 2005 - 2008**

Region	Zip Code	Summer 2005	Summer 2006	Summer 2007	Summer 2008	05-08 %chg
Round Rock						
Round Rock	78664	552	631	632	646	17.03%
Round Rock	78665	0	0	2	122	.
Round Rock	78681	401	461	447	519	29.43%
Austin	78717	197	305	277	366	85.79%
Austin	78729	340	371	383	436	28.24%
Total		1,490	1,768	1,741	2,089	40.20%
% of Grand Total		6.81%	7.93%	7.47%	8.56%	
Taylor/Hutto/East Williamson County						
Taylor	76574	21	21	14	18	-14.29%
Thrall	76578	1	2	0	2	100.00%
Coupland	78615	6	3	4	5	-16.67%
Hutto	78634	43	57	75	98	127.91%
Total		71	83	93	123	73.24%
% of Grand Total		0.32%	0.37%	0.40%	0.50%	
West Travis County						
Leander	78645	65	78	76	88	35.38%
Spicewood	78669	28	34	33	42	50.00%
Austin	78732	80	78	98	107	33.75%
Austin	78733	105	119	98	90	-14.29%
Austin	78734	148	150	153	163	10.14%
Austin	78738	82	109	97	143	74.39%
Total		508	568	555	633	24.61%
% of Grand Total		2.32%	2.55%	2.38%	2.59%	
Other/Unknown		934	1,084	2,728	2,330	149.46%
Total		934	1,084	2,728	2,330	149.46%
% of Grand Total		4.27%	4.86%	11.70%	9.55%	
GRAND TOTAL		21,890	22,303	23,311	24,395	11.44%

NOTES: Headcount based on zip code data as reported and entered in the ACC database. Zip code regions are based on definitions developed by ACC administration.

Source: 4th Class Day Data (Second 5½ week session)

Headcount by Zip Code
Summer 2005 - 2008

Zip Code	Region	Summer 2005	Summer 2006	Summer 2007	Summer 2008	05-08 % chg
76527	Florence	5	5	10	9	80.00%
76530	Granger	1	5	8	4	300.00%
76537	Jarrell	9	12	10	15	66.67%
76574	Taylor	21	21	14	18	-14.29%
76578	Thrall	1	2	0	2	100.00%
78140	Nixon	0	0	1	0	.
78602	Bastrop	108	103	103	128	18.52%
78605	Bertram	6	6	13	7	16.67%
78606	Blanco	22	38	37	25	13.64%
78608	Briggs	0	0	1	1	.
78610	Buda	129	134	135	158	22.48%
78611	Burnet	14	13	9	6	-57.14%
78612	Cedar Creek	50	46	50	72	44.00%
78613	Cedar Park	849	942	877	1,065	25.44%
78614	Cost	1	2	1	2	100.00%
78615	Coupland	6	3	4	5	-16.67%
78616	Dale	17	23	20	31	82.35%
78617	Del Valle	113	128	162	160	41.59%
78618	Doss	4	2	4	4	0.00%
78619	Driftwood	21	13	12	13	-38.10%
78620	Dripping Springs	75	85	80	99	32.00%
78621	Elgin	110	98	115	124	12.73%
78624	Fredericksburg	158	172	161	182	15.19%
78626	Georgetown	95	114	102	125	31.58%
78628	Georgetown	191	242	231	194	1.57%
78629	Gonzales	9	11	5	5	-44.44%
78631	Harper	35	39	34	34	-2.86%
78633	Georgetown	0	0	1	29	.
78634	Hutto	43	57	75	98	127.91%
78635	Hye	1	0	1	2	100.00%
78636	Johnson City	34	34	29	18	-47.06%
78640	Kyle	136	165	166	177	30.15%
78641	Leander	503	460	442	570	13.32%
78642	Liberty Hill	30	28	28	48	60.00%

¹ These numbers do not represent total enrollment for the county due to zip codes that span more than one county.

NOTES: Headcount based on zip code data as reported and entered in the ACC database. Zip code regions are based on definitions developed by ACC administration.

Source: 4th Class Day Data (Second 5½ week session)

**Headcount by Zip Code (continued)
Summer 2005 - 2008**

Zip Code	Region	Summer 2005	Summer 2006	Summer 2007	Summer 2008	05-08 % chg	
78644	Lockhart	Caldwell County ¹	74	60	71	79	6.76%
78645	Leander	West Travis County	65	78	76	88	35.38%
78648	Luling	Caldwell County ¹	12	11	8	36	200.00%
78650	McDade	Bastrop County ¹	6	8	3	8	33.33%
78652	Manchaca	Austin/Travis County, South	64	41	54	45	-29.69%
78653	Manor	Manor/East Travis County	150	168	153	213	42.00%
78654	Marble Falls	Burnet County ¹	10	20	16	12	20.00%
78655	Martindale	Caldwell County ¹	14	12	14	9	-35.71%
78656	Maxwell	Caldwell County ¹	12	4	7	6	-50.00%
78659	Paige	Bastrop County ¹	6	9	13	11	83.33%
78660	Pflugerville	Pflugerville/Northeast Travis County	502	562	572	631	25.70%
78662	Red Rock	Bastrop County ¹	16	12	14	6	-62.50%
78663	Round Mountain	Blanco County ¹	3	5	3	2	-33.33%
78664	Round Rock	Round Rock	552	631	632	646	17.03%
78665	Round Rock	Round Rock	0	0	2	122	.
78666	San Marcos	Hays County ¹	360	337	337	353	-1.94%
78667	San Marcos	Hays County ¹	19	16	6	7	-63.16%
78669	Spicewood	West Travis County	28	34	33	42	50.00%
78671	Stonewall	Gillespie County ¹	6	3	5	6	0.00%
78675	Willow City	Gillespie County ¹	1	1	3	1	0.00%
78676	Wimberley	Hays County ¹	42	46	40	50	19.05%
78681	Round Rock	Round Rock	401	461	447	519	29.43%
78701	Austin	Austin/Travis County, Central	129	111	95	93	-27.91%
78702	Austin	Austin/Travis County, East	287	268	267	270	-5.92%
78703	Austin	Austin/Travis County, Central	335	304	252	281	-16.12%
78704	Austin	Austin/Travis County, South	826	771	728	699	-15.38%
78705	Austin	Austin/Travis County, Central	1,704	1,607	1,479	1,407	-17.43%
78712	Austin	Austin/Travis County, Central	1	0	0	1	0.00%
78717	Austin	Round Rock	197	305	277	366	85.79%
78719	Austin	Austin/Travis County, Southeast	13	21	25	24	84.62%
78721	Austin	Austin/Travis County, East	128	113	98	149	16.41%
78722	Austin	Austin/Travis County, East	129	134	131	128	-0.78%
78723	Austin	Austin/Travis County, East	368	343	285	324	-11.96%
78724	Austin	Manor/East Travis County	134	140	147	141	5.22%
78725	Austin	Manor/East Travis County	51	58	83	80	56.86%
78726	Austin	Austin/Travis County, Northwest	191	220	201	253	32.46%

¹ These numbers do not represent total enrollment for the county due to zip codes that span more than one county.

NOTES: Headcount based on zip code data as reported and entered in the ACC database. Zip code regions are based on definitions developed by ACC administration.

Source: 4th Class Day Data (Second 5½ week session)

Headcount by Zip Code (continued) Summer 2005 - 2008

Zip Code	Region	Summer 2005	Summer 2006	Summer 2007	Summer 2008	05-08 % chg
78727	Austin Austin/Travis County, North	424	469	476	511	20.52%
78728	Austin Austin/Travis County, North	184	213	191	202	9.78%
78729	Austin Round Rock	340	371	383	436	28.24%
78730	Austin Austin/Travis County, Northwest	79	78	87	83	5.06%
78731	Austin Austin/Travis County, Northwest	483	446	415	421	-12.84%
78732	Austin West Travis County	80	78	98	107	33.75%
78733	Austin West Travis County	105	119	98	90	-14.29%
78734	Austin West Travis County	148	150	153	163	10.14%
78735	Austin Austin/Travis County, Southwest	175	188	186	207	18.29%
78736	Austin Austin/Travis County, Southwest	138	145	144	128	-7.25%
78737	Austin Hays County ¹	120	132	112	130	8.33%
78738	Austin West Travis County	82	109	97	143	74.39%
78739	Austin Austin/Travis County, Southwest	214	261	274	293	36.92%
78741	Austin Austin/Travis County, Southeast	1,411	1,521	1,423	1,353	-4.11%
78742	Austin Austin/Travis County, Southeast	4	10	9	10	150.00%
78744	Austin Austin/Travis County, Southeast	441	398	427	483	9.52%
78745	Austin Austin/Travis County, South	987	908	941	952	-3.55%
78746	Austin Austin/Travis County, Southwest	393	418	418	348	-11.45%
78747	Austin Austin/Travis County, Southeast	132	130	122	205	55.30%
78748	Austin Austin/Travis County, South	696	658	590	712	2.30%
78749	Austin Austin/Travis County, Southwest	729	695	688	662	-9.19%
78750	Austin Austin/Travis County, Northwest	322	391	429	454	40.99%
78751	Austin Austin/Travis County, Central	448	422	416	456	1.79%
78752	Austin Austin/Travis County, Central	236	194	186	209	-11.44%
78753	Austin Pflugerville/Northeast Travis County	586	619	567	602	2.73%
78754	Austin Pflugerville/Northeast Travis County	161	182	175	204	26.71%
78756	Austin Austin/Travis County, Central	118	113	121	104	-11.86%
78757	Austin Austin/Travis County, Central	362	340	314	282	-22.10%
78758	Austin Austin/Travis County, North	904	809	755	795	-12.06%
78759	Austin Austin/Travis County, Northwest	789	706	725	740	-6.21%
78953	Rosanky Bastrop County ¹	3	3	4	4	33.33%
78957	Smithville Bastrop County ¹	29	26	41	38	31.03%
	Other/Unknown	934	1,084	2,728	2,330	149.46%
GRAND TOTAL		21,890	22,303	23,311	24,395	11.44%

¹ These numbers do not represent total enrollment for the county due to zip codes that span more than one county.

NOTES: Headcount based on zip code data as reported and entered in the ACC database. Zip code regions are based on definitions developed by ACC administration.

Source: 4th Class Day Data (Second 5½ week session)

**Student Characteristics
Developmental Education - Reading
Summer 2006 - 2008**

	Summer 2006		Summer 2007		Summer 2008		06-08 % Chg
Student Headcount	219		195		231		5.48%
Residency							
In-District	160	73.06%	138	70.77%	173	74.89%	8.13%
Out-of-District	47	21.46%	48	24.62%	53	22.94%	12.77%
Out-of-State/International	7	3.20%	8	4.10%	3	1.30%	-57.14%
Other/Unknown ¹	5	2.28%	1	0.51%	2	0.87%	-60.00%
Gender							
Male	85	38.81%	65	33.33%	74	32.03%	-12.94%
Female	134	61.19%	130	66.67%	157	67.97%	17.16%
Student Status							
Part-time	65	29.68%	65	33.33%	87	37.66%	33.85%
Full-time ²	154	70.32%	130	66.67%	144	62.34%	-6.49%
Ethnicity							
White	68	31.05%	40	20.51%	69	29.87%	1.47%
Black	38	17.35%	51	26.15%	71	30.74%	86.84%
Hispanic	89	40.64%	78	40.00%	75	32.47%	-15.73%
Asian/Pacific Islander	15	6.85%	18	9.23%	13	5.63%	-13.33%
Am. Indian/Alaskan Native	0	0.00%	1	0.51%	1	0.43%	.
Non-Resident Alien	6	2.74%	1	0.51%	1	0.43%	-83.33%
Other/Unknown	3	1.37%	6	3.08%	1	0.43%	-66.67%
Age							
16 and Under	0	0.00%	2	1.03%	2	0.87%	.
17	5	2.28%	10	5.13%	16	6.93%	220.00%
18	31	14.16%	28	14.36%	22	9.52%	-29.03%
19-21	75	34.25%	68	34.87%	71	30.74%	-5.33%
22-24	35	15.98%	32	16.41%	30	12.99%	-14.29%
25-30	32	14.61%	22	11.28%	41	17.75%	28.13%
31-35	21	9.59%	17	8.72%	19	8.23%	-9.52%
36-50	20	9.13%	13	6.67%	21	9.09%	5.00%
51-64	0	0.00%	2	1.03%	8	3.46%	.
65 and Over	0	0.00%	1	0.51%	1	0.43%	.
Average Age	24.23	.	23.75	.	25.56	.	5.49%

¹ Other includes students with tuition exemptions and waivers.

² Full-time - 6 credit hours or more.

NOTES: Unduplicated headcount of students who were enrolled in at least one Developmental Reading course.

Source: 4th Class Day Data (Second 5½ week session)

**Student Characteristics
Developmental Education - Writing
Summer 2006 - 2008**

	Summer 2006		Summer 2007		Summer 2008		06-08 % Chg
Student Headcount	135		137		160		18.52%
Residency							
In-District	101	74.81%	114	83.21%	123	76.88%	21.78%
Out-of-District	30	22.22%	19	13.87%	32	20.00%	6.67%
Out-of-State/International	3	2.22%	4	2.92%	5	3.13%	66.67%
Other/Unknown ¹	1	0.74%	0	0.00%	0	0.00%	-100.00%
Gender							
Male	65	48.15%	54	39.42%	71	44.38%	9.23%
Female	70	51.85%	83	60.58%	89	55.63%	27.14%
Student Status							
Part-time	21	15.56%	45	32.85%	57	35.63%	171.43%
Full-time ²	114	84.44%	92	67.15%	103	64.38%	-9.65%
Ethnicity							
White	30	22.22%	35	25.55%	33	20.63%	10.00%
Black	33	24.44%	34	24.82%	50	31.25%	51.52%
Hispanic	60	44.44%	53	38.69%	66	41.25%	10.00%
Asian/Pacific Islander	6	4.44%	8	5.84%	10	6.25%	66.67%
Am. Indian/Alaskan Native	0	0.00%	0	0.00%	0	0.00%	.
Non-Resident Alien	4	2.96%	1	0.73%	0	0.00%	-100.00%
Other/Unknown	2	1.48%	6	4.38%	1	0.63%	-50.00%
Age							
16 and Under	2	1.48%	0	0.00%	0	0.00%	-100.00%
17	2	1.48%	3	2.19%	8	5.00%	300.00%
18	11	8.15%	14	10.22%	17	10.63%	54.55%
19-21	43	31.85%	48	35.04%	47	29.38%	9.30%
22-24	24	17.78%	22	16.06%	20	12.50%	-16.67%
25-30	28	20.74%	28	20.44%	31	19.38%	10.71%
31-35	11	8.15%	8	5.84%	12	7.50%	9.09%
36-50	11	8.15%	12	8.76%	20	12.50%	81.82%
51-64	3	2.22%	2	1.46%	5	3.13%	66.67%
65 and Over	0	0.00%	0	0.00%	0	0.00%	.
Average Age	25.27	.	24.59	.	25.89	.	2.45%

¹ Other includes students with tuition exemptions and waivers.

² Full-time - 6 credit hours or more.

NOTES: Unduplicated headcount of students who were enrolled in at least one Developmental Writing course.

Source: 4th Class Day Data (Second 5½ week session)

**Student Characteristics
Developmental Education - Math
Summer 2006 - 2008**

	Summer 2006	Summer 2007	Summer 2008	06-08 % Chg
Student Headcount	2,074	2,000	2,098	1.16%
Residency				
In-District	1,532 73.87%	1,435 71.75%	1,644 78.36%	7.31%
Out-of-District	481 23.19%	514 25.70%	418 19.92%	-13.10%
Out-of-State/International	56 2.70%	43 2.15%	27 1.29%	-51.79%
Other/Unknown ¹	5 0.24%	8 0.40%	9 0.43%	80.00%
Gender				
Male	756 36.45%	755 37.75%	799 38.08%	5.69%
Female	1,318 63.55%	1,245 62.25%	1,299 61.92%	-1.44%
Student Status				
Part-time	780 37.61%	805 40.25%	823 39.23%	5.51%
Full-time ²	1,294 62.39%	1,195 59.75%	1,275 60.77%	-1.47%
Ethnicity				
White	943 45.47%	970 48.50%	951 45.33%	0.85%
Black	342 16.49%	263 13.15%	325 15.49%	-4.97%
Hispanic	662 31.92%	642 32.10%	689 32.84%	4.08%
Asian/Pacific Islander	58 2.80%	67 3.35%	75 3.57%	29.31%
Am. Indian/Alaskan Native	18 0.87%	15 0.75%	17 0.81%	-5.56%
Non-Resident Alien	27 1.30%	19 0.95%	17 0.81%	-37.04%
Other/Unknown	24 1.16%	24 1.20%	24 1.14%	0.00%
Age				
16 and Under	12 0.58%	2 0.10%	0 0.00%	-100.00%
17	22 1.06%	26 1.30%	24 1.14%	9.09%
18	126 6.08%	137 6.85%	115 5.48%	-8.73%
19-21	630 30.38%	582 29.10%	622 29.65%	-1.27%
22-24	349 16.83%	349 17.45%	341 16.25%	-2.29%
25-30	430 20.73%	448 22.40%	468 22.31%	8.84%
31-35	212 10.22%	190 9.50%	212 10.10%	0.00%
36-50	257 12.39%	234 11.70%	273 13.01%	6.23%
51-64	36 1.74%	31 1.55%	38 1.81%	5.56%
65 and Over	0 0.00%	1 0.05%	5 0.24%	.
Average Age	26.31 .	26.10 .	26.68 .	1.41%

¹ Other includes students with tuition exemptions and waivers.

² Full-time - 6 credit hours or more.

NOTES: Unduplicated headcount of students who were enrolled in at least one Developmental Math course.

Source: 4th Class Day Data (Second 5½ week session)

**Student Characteristics
Developmental Education - Other¹
Summer 2006 - 2008**

	Summer 2006		Summer 2007		Summer 2008		06-08 % Chg
Student Headcount	89		110		113		26.97%
Residency							
In-District	65	73.03%	83	75.45%	78	69.03%	20.00%
Out-of-District	21	23.60%	25	22.73%	31	27.43%	47.62%
Out-of-State/International	3	3.37%	1	0.91%	4	3.54%	33.33%
Other/Unknown ²	0	0.00%	1	0.91%	0	0.00%	.
Gender							
Male	36	40.45%	50	45.45%	48	42.48%	33.33%
Female	53	59.55%	60	54.55%	65	57.52%	22.64%
Student Status							
Part-time	29	32.58%	59	53.64%	60	53.10%	106.90%
Full-time ³	60	67.42%	51	46.36%	53	46.90%	-11.67%
Ethnicity							
White	29	32.58%	34	30.91%	37	32.74%	27.59%
Black	17	19.10%	18	16.36%	27	23.89%	58.82%
Hispanic	39	43.82%	46	41.82%	39	34.51%	0.00%
Asian/Pacific Islander	2	2.25%	10	9.09%	7	6.19%	250.00%
Am. Indian/Alaskan Native	0	0.00%	1	0.91%	1	0.88%	.
Non-Resident Alien	0	0.00%	0	0.00%	1	0.88%	.
Other/Unknown	2	2.25%	1	0.91%	1	0.88%	-50.00%
Age							
16 and Under	1	1.12%	2	1.82%	0	0.00%	-100.00%
17	1	1.12%	4	3.64%	2	1.77%	100.00%
18	7	7.87%	11	10.00%	13	11.50%	85.71%
19-21	26	29.21%	38	34.55%	51	45.13%	96.15%
22-24	18	20.22%	23	20.91%	17	15.04%	-5.56%
25-30	17	19.10%	13	11.82%	15	13.27%	-11.76%
31-35	10	11.24%	11	10.00%	4	3.54%	-60.00%
36-50	9	10.11%	6	5.45%	9	7.96%	0.00%
51-64	0	0.00%	1	0.91%	2	1.77%	.
65 and Over	0	0.00%	1	0.91%	0	0.00%	.
Average Age	25.33	.	23.93	.	23.69	.	-6.47%

¹ Other includes human development and study skills.

² Other includes students with tuition exemptions and waivers.

³ Full-time - 6 credit hours or more.

NOTES: Unduplicated headcount of students who were enrolled in at least one Developmental Other¹ course.

Source: 4th Class Day Data (Second 5½ week session)

THIS PAGE INTENTIONALLY LEFT BLANK

**Student Characteristics
District-wide
Fall 2004 - 2008**

	Fall 2004	Fall 2005	Fall 2006	Fall 2007	Fall 2008	04-08 % chg
Student Headcount	30,439	31,908	33,039	33,508	35,798	17.61%
Credit Hours	240,957	253,569	262,355	267,284	281,149	16.68%
Average Credit Hours	7.92	7.90	7.90	8.00	7.85	-0.79%
Contact Hours	4,615,496	4,832,704	5,016,656	5,123,072	5,386,376	16.70%
Average Contact Hours	151.63	151.50	151.80	152.90	150.47	-0.77%
Full-time Student Equivalent (FTSE)¹	16,064	16,905	17,490	17,819	18,743	16.68%
Residency						
In-District	21,177 69.57%	23,266 72.92%	23,533 71.23%	23,542 70.26%	27,221 76.04%	28.54%
Out-of-District	8,358 27.46%	7,719 24.19%	8,502 25.73%	9,081 27.10%	7,702 21.52%	-7.85%
Out-of-State/International	527 1.73%	575 1.80%	689 2.09%	573 1.71%	496 1.39%	-5.88%
Other/Unknown ²	377 1.24%	348 1.09%	315 0.95%	312 0.93%	379 1.06%	0.53%
Gender						
Male	13,293 43.67%	13,831 43.35%	14,498 43.88%	14,434 43.08%	15,486 43.26%	16.50%
Female	17,146 56.33%	18,077 56.65%	18,541 56.12%	19,074 56.92%	20,312 56.74%	18.46%
Student Status						
Part-time	22,074 72.52%	23,063 72.28%	23,821 72.10%	24,276 72.45%	26,470 73.94%	19.91%
Full-time ³	8,154 26.79%	8,818 27.64%	9,218 27.90%	9,232 27.55%	9,328 26.06%	14.40%
Ethnicity						
White	18,380 60.38%	19,097 59.85%	19,467 58.92%	19,810 59.12%	20,754 57.98%	12.92%
Black	2,194 7.21%	2,383 7.47%	2,557 7.74%	2,689 8.02%	2,978 8.32%	35.73%
Hispanic	6,822 22.41%	7,456 23.37%	8,014 24.26%	7,897 23.57%	8,846 24.71%	29.67%
Asian/Pacific Islander	1,600 5.26%	1,596 5.00%	1,598 4.84%	1,780 5.31%	2,029 5.67%	26.81%
Am. Indian/Alaskan Native	237 0.78%	231 0.72%	294 0.89%	293 0.87%	306 0.85%	29.11%
Non-Resident Alien	694 2.28%	652 2.04%	661 2.00%	558 1.67%	441 1.23%	-36.46%
Other/Unknown	512 1.68%	493 1.55%	448 1.36%	481 1.44%	444 1.24%	-13.28%
Age						
16 and Under	485 1.59%	620 1.94%	844 2.55%	859 2.56%	1,075 3.00%	121.65%
17	1,118 3.67%	1,382 4.33%	1,415 4.28%	1,655 4.94%	1,742 4.87%	55.81%
18	2,557 8.40%	2,840 8.90%	3,104 9.39%	3,197 9.54%	3,489 9.75%	36.45%
19-21	9,005 29.58%	9,300 29.15%	9,586 29.01%	9,809 29.27%	10,147 28.35%	12.68%
22-24	5,306 17.43%	5,428 17.01%	5,370 16.25%	5,273 15.74%	5,492 15.34%	3.51%
25-30	5,485 18.02%	5,636 17.66%	5,907 17.88%	5,861 17.49%	6,311 17.63%	15.06%
31-35	2,516 8.27%	2,518 7.89%	2,533 7.67%	2,489 7.43%	2,787 7.79%	10.77%
36-50	3,285 10.79%	3,444 10.79%	3,501 10.60%	3,558 10.62%	3,845 10.74%	17.05%
51-64	627 2.06%	673 2.11%	703 2.13%	715 2.13%	839 2.34%	33.81%
65 and Over	55 0.18%	67 0.21%	76 0.23%	85 0.25%	71 0.20%	29.09%
Unknown	0 0.00%	0 0.00%	0 0.00%	7 0.02%	0 0.00%	.
Average Age	25.60	25.50	25.40	25.30	25.40	-0.78%

¹ Full-time Student Equivalent (FTSE) is based on 15 SCH.
² Other includes students with tuition exemptions and waivers.
³ Full-time - 12 credit hours or more.

NOTE: Percents may not add to 100 due to rounding.

Source: Fall 12th Class Day Data

Student Characteristics
Full-Time Student Equivalent (FTSE)¹
Fall 2008

	Fall 2007		Fall 2008		07-08 % chg
Total Students	17,819		18,790		5.45%
Student Status					
Part-time	9,783	54.90%	10,688	56.88%	9.25%
Full-time ²	8,036	45.10%	8,102	43.12%	0.82%
Residency					
In-District	12,637	70.92%	14,389	76.58%	13.86%
Out-of-District	4,614	25.89%	3,826	20.36%	-17.08%
Out-of-State/International	328	1.84%	282	1.50%	-14.02%
Other/Unknown ³	241	1.35%	294	1.56%	21.99%
Gender					
Male	9,773	54.85%	10,249	54.54%	4.87%
Female	8,046	45.15%	8,541	45.46%	6.15%
Ethnicity					
White	10,672	59.89%	11,022	58.66%	3.28%
Black	1,369	7.68%	1,488	7.92%	8.69%
Hispanic	4,084	22.92%	4,516	24.03%	10.58%
Asian/Pacific Islander	949	5.33%	1,102	5.86%	16.12%
Am. Indian/Alaskan Native	162	0.91%	167	0.89%	3.09%
Non-Resident Alien	334	1.87%	262	1.39%	-21.56%
Other/Unknown	249	1.40%	233	1.24%	-6.43%
Age					
16 and Under	255	1.43%	308	1.64%	20.78%
17	571	3.20%	580	3.09%	1.58%
18	2,129	11.95%	2,299	12.24%	7.98%
19-21	6,127	34.38%	6,313	33.60%	3.04%
22-24	2,852	16.01%	2,948	15.69%	3.37%
25-30	2,952	16.57%	3,141	16.72%	6.40%
31-35	1,141	6.40%	1,287	6.85%	12.80%
36-50	1,499	8.41%	1,579	8.40%	5.34%
51-64	267	1.50%	316	1.68%	18.35%
65 and Over	24	0.13%	19	0.10%	-20.83%
Unknown	2	0.01%	0	0.00%	-100.00%

¹ Full-time Student Equivalent (FTSE) is based on 15 SCH.

² Other includes students with tuition exemptions and waivers.

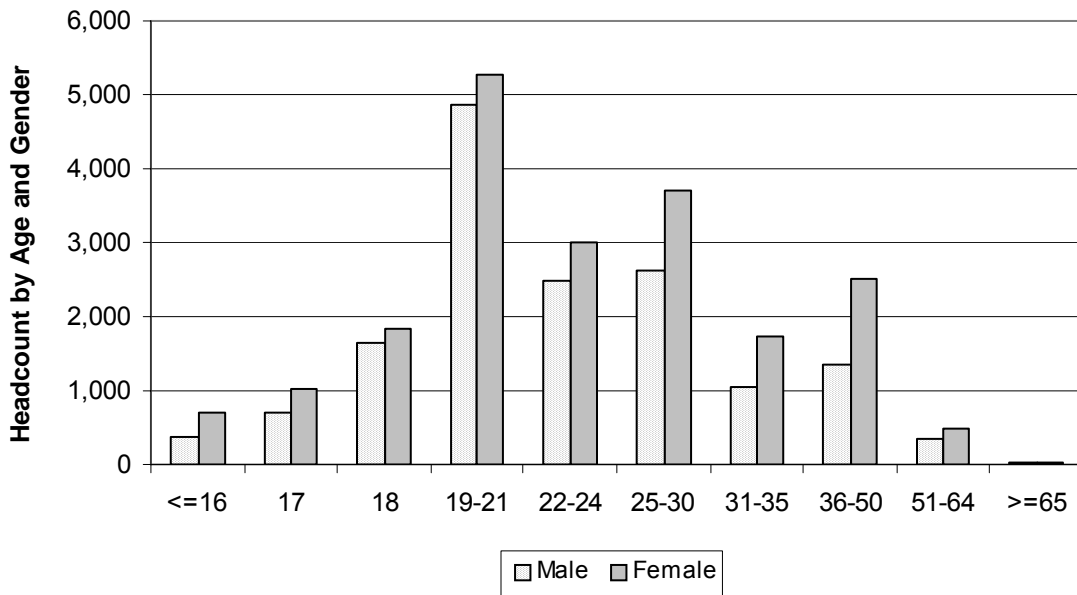
³ Full-time - 12 credit hours or more.

NOTE: Percents may not add to 100 and some numbers may not add up to the totals due to rounding.

Source: Fall 12th Class Day Data

**Student Characteristics
Headcount by Age and Gender
Fall 2008**

Age	Male		Female		Total	
16 and Under	376	2.43%	699	3.44%	1,075	3.00%
17	707	4.57%	1,035	5.10%	1,742	4.87%
18	1,644	10.62%	1,845	9.08%	3,489	9.75%
19-21	4,869	31.44%	5,278	25.98%	10,147	28.35%
22-24	2,490	16.08%	3,002	14.78%	5,492	15.34%
25-30	2,621	16.92%	3,690	18.17%	6,311	17.63%
31-35	1,065	6.88%	1,722	8.48%	2,787	7.79%
36-50	1,338	8.64%	2,507	12.34%	3,845	10.74%
51-64	340	2.20%	499	2.46%	839	2.34%
65 and Over	36	0.23%	35	0.17%	71	0.20%
TOTAL	15,486	100.00%	20,312	100.00%	35,798	100.00%

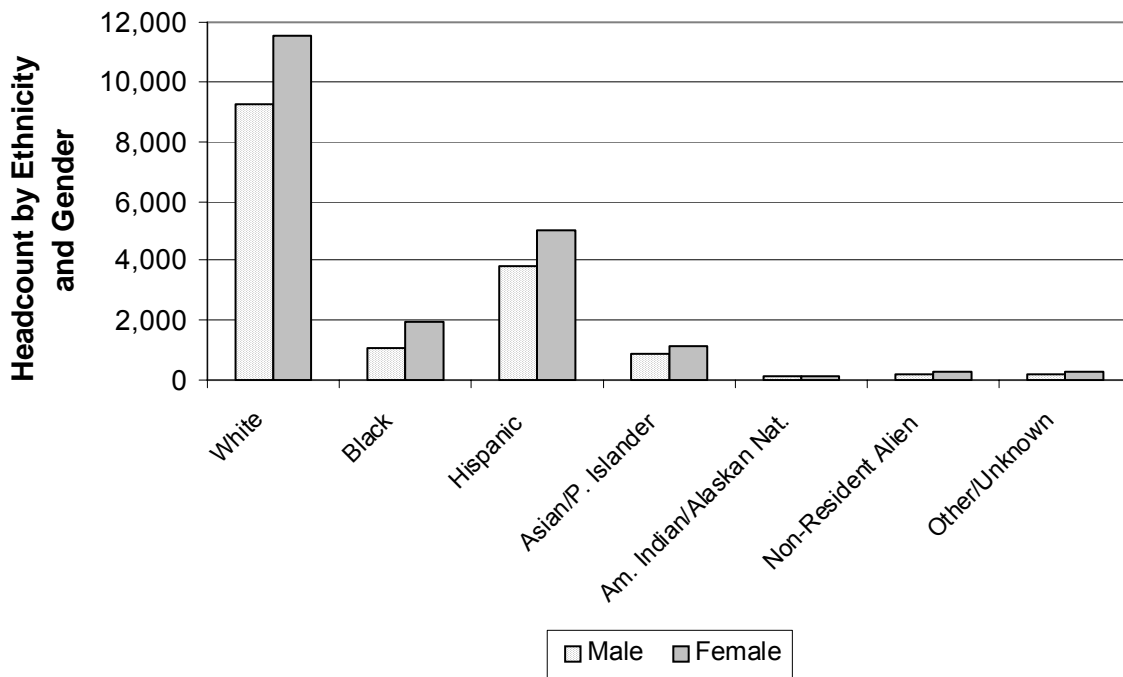


NOTE: Percents may not add to 100 due to rounding.

Source: Fall 12th Class Day Data

Student Characteristics Headcount by Ethnicity and Gender Fall 2008

Ethnicity	Male		Female		Total	
White	9,229	59.60%	11,525	56.74%	20,754	57.98%
Black	1,065	6.88%	1,913	9.42%	2,978	8.32%
Hispanic	3,794	24.50%	5,052	24.87%	8,846	24.71%
Asian/Pacific Islander	873	5.64%	1,156	5.69%	2,029	5.67%
Am. Indian/Alaskan Native	156	1.01%	150	0.74%	306	0.85%
Non-Resident Alien	192	1.24%	249	1.23%	441	1.23%
Other/Unknown	177	1.14%	267	1.31%	444	1.24%
TOTAL	15,486	100.00%	20,312	100.00%	35,798	100.00%



NOTE: Percents may not add to 100 due to rounding.

Source: Fall 12th Class Day Data

**Student Characteristics
Headcount by Gender and Full/Part-time Status
Fall 2008**

Gender	Full-time		Part-time		Total	
Male	4,708	50.47%	10,778	40.72%	15,486	43.26%
Female	4,620	49.53%	15,692	59.28%	20,312	56.74%
TOTAL	9,328	100.00%	26,470	100.00%	35,798	100.00%

**Student Characteristics
Headcount by Ethnicity and Full/Part-time Status
Fall 2008**

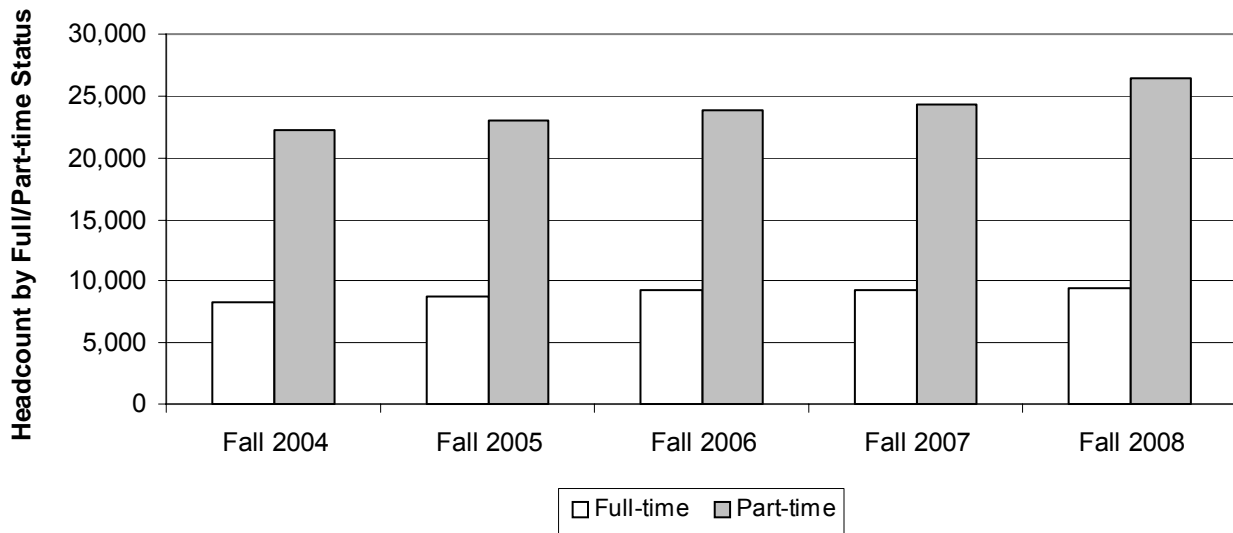
Ethnicity	Full-time		Part-time		Total	
White	5,701	61.12%	15,053	56.87%	20,754	57.98%
Black	614	6.58%	2,364	8.93%	2,978	8.32%
Hispanic	2,016	21.61%	6,830	25.80%	8,846	24.71%
Asian/Pacific Islander	619	6.64%	1,410	5.33%	2,029	5.67%
Am. Indian/Alaskan Native	91	0.98%	215	0.81%	306	0.85%
Non-Resident Alien	187	2.00%	254	0.96%	441	1.23%
Other/Unknown	100	1.07%	344	1.30%	444	1.24%
TOTAL	9,328	100.00%	26,470	100.00%	35,798	100.00%

NOTE: Percents may not add to 100 due to rounding.

Source: Fall 12th Class Day Data

Student Characteristics Headcount by Full/Part-time Status Fall 2004 - 2008

	Fall 2004	Fall 2005	Fall 2006	Fall 2007	Fall 2008	04-08 % chg
FULL-TIME STUDENTS¹						
Headcount	8,247	8,829	9,218	9,232	9,328	13.11%
% of Total	27.09%	27.67%	27.90%	27.55%	26.06%	
Average Hours Attempted	13.10	13.00	13.00	13.06	13.03	-0.53%
PART-TIME STUDENTS²						
Headcount	22,192	23,079	23,821	24,276	26,470	19.28%
% of Total	72.91%	72.33%	72.10%	72.45%	73.94%	
Average Hours Attempted	6.00	6.00	6.00	6.05	6.06	1.00%
TOTAL HEADCOUNT	30,439	31,908	33,039	33,508	35,798	17.61%



¹ Full-time students are those enrolled in 12 or more semester credit hours
² Part-time students are those enrolled in less than 12 semester credit hours.

NOTE: Percents may not add to 100 due to rounding.

Source: Fall 12th Class Day Data

**Student Characteristics
Headcount by Day/Evening Classification
Fall 2004 - 2008**

Classification	Fall 2004	Fall 2005	Fall 2006	Fall 2007	Fall 2008	04-08 %chg
Day	14,229	15,367	15,927	16,089	17,279	21.44%
%of Total	46.75%	48.16%	48.21%	48.02%	48.27%	
Evening	4,407	4,529	4,640	4,319	4,322	-1.93%
%of Total	14.48%	14.19%	14.04%	12.89%	12.07%	
Telecommunicated	2,360	2,518	2,569	2,926	3,018	27.88%
%of Total	7.75%	7.89%	7.78%	8.73%	8.43%	
Day & Evening	5,713	5,790	6,023	6,155	6,547	14.60%
%of Total	18.77%	18.15%	18.23%	18.37%	18.29%	
Day & Telecommunicated	1,992	2,027	2,211	2,232	2,523	26.66%
%of Total	6.54%	6.35%	6.69%	6.66%	7.05%	
Evening & Telecommunicated	874	820	866	953	1,103	26.20%
%of Total	2.87%	2.57%	2.62%	2.84%	3.08%	
Day & Evening & Telecommunicated	739	686	700	761	808	9.34%
%of Total	2.43%	2.15%	2.12%	2.27%	2.26%	
Non-identifiable	125	171	103	73	198	58.40%
%of Total	0.41%	0.54%	0.31%	0.22%	0.55%	
Total	30,439	31,908	33,039	33,508	35,798	17.61%

NOTES: Classifications are mutually exclusive. Day students are enrolled in courses that begin before 5:30 PM and evening students are enrolled in courses that begin at or after 5:30 PM. The "Non-identifiable" category includes self-paced courses and courses without designated meeting times. Percents may not add to 100 due to rounding.

Source: Fall 12th Class Day Data

**Headcount by Region and Zip Code
Fall 2004 - 2008**

Region	Zip Code	Fall 2004	Fall 2005	Fall 2006	Fall 2007	Fall 2008	04-08 %chg
Austin/Travis County, Central							
Austin	78701	112	140	127	109	114	1.79%
Austin	78703	404	389	369	342	351	-13.12%
Austin	78705	1,014	940	918	949	940	-7.30%
Austin	78712	0	1	0	1	0	.
Austin	78751	501	507	515	480	499	-0.40%
Austin	78752	370	338	349	329	359	-2.97%
Austin	78756	190	170	190	193	185	-2.63%
Austin	78757	587	588	556	522	499	-14.99%
Total		3,178	3,073	3,024	2,925	2,947	-7.27%
% of Grand Total		10.44%	9.63%	9.15%	8.73%	8.23%	
Austin/Travis County, East							
Austin	78702	447	479	460	480	531	18.79%
Austin	78721	184	198	182	194	235	27.72%
Austin	78722	186	198	185	187	173	-6.99%
Austin	78723	618	557	533	507	541	-12.46%
Total		1,435	1,432	1,360	1,368	1,480	3.14%
% of Grand Total		4.71%	4.49%	4.12%	4.08%	4.13%	
Austin/Travis County, North							
Austin	78727	676	686	763	751	740	9.47%
Austin	78728	308	336	327	337	403	30.84%
Austin	78758	1,469	1,456	1,381	1,444	1,391	-5.31%
Total		2,453	2,478	2,471	2,532	2,534	3.30%
% of Grand Total		8.06%	7.77%	7.48%	7.56%	7.08%	
Austin/Travis County, Northwest							
Austin	78726	323	325	312	304	335	3.72%
Austin	78730	110	102	120	98	112	1.82%
Austin	78731	507	541	501	503	461	-9.07%
Austin	78750	382	414	439	463	525	37.43%
Austin	78759	1,019	1,046	930	975	944	-7.36%
Total		2,341	2,428	2,302	2,343	2,377	1.54%
% of Grand Total		7.69%	7.61%	6.97%	6.99%	6.64%	

NOTES: Headcount based on zip code data as reported and entered in the ACC database. Zip code regions are based on definitions developed by ACC administration.

Source: Fall 12th Class Day Data

Headcount by Region and Zip Code (continued)
Fall 2004 - 2008

Region	Zip Code	Fall 2004	Fall 2005	Fall 2006	Fall 2007	Fall 2008	04-08 %chg
Austin/Travis County, South							
Manhaca	78652	100	97	115	88	108	8.00%
Austin	78704	1,302	1,317	1,237	1,134	1,229	-5.61%
Austin	78745	1,743	1,722	1,791	1,756	1,674	-3.96%
Austin	78748	1,045	1,045	1,121	1,166	1,251	19.71%
Total		4,190	4,181	4,264	4,144	4,262	1.72%
% of Grand Total		13.77%	13.10%	12.91%	12.37%	11.91%	
Austin/Travis County, Southeast							
Del Valle	78617	153	205	264	265	286	86.93%
Austin	78719	27	27	26	30	28	3.70%
Austin	78741	1,702	2,010	2,114	2,006	2,013	18.27%
Austin	78742	12	15	14	18	15	25.00%
Austin	78744	721	838	883	869	948	31.48%
Austin	78747	217	207	225	259	333	53.46%
Total		2,832	3,302	3,526	3,447	3,623	27.93%
% of Grand Total		9.30%	10.35%	10.67%	10.29%	10.12%	
Austin/Travis County, Southwest							
Austin	78735	271	265	259	257	282	4.06%
Austin	78736	218	218	234	240	240	10.09%
Austin	78739	241	280	296	328	348	44.40%
Austin	78746	309	317	353	355	322	4.21%
Austin	78749	1,120	1,086	1,044	1,064	1,046	-6.61%
Total		2,159	2,166	2,186	2,244	2,238	3.66%
% of Grand Total		7.09%	6.79%	6.62%	6.70%	6.25%	

NOTES: Headcount based on zip code data as reported and entered in the ACC database. Zip code regions are based on definitions developed by ACC administration.

Source: Fall 12th Class Day Data

**Headcount by Region and Zip Code (continued)
Fall 2004 - 2008**

Region	Zip Code	Fall 2004	Fall 2005	Fall 2006	Fall 2007	Fall 2008	04-08 %chg
Bastrop County¹							
Bastrop	78602	153	170	179	225	243	58.82%
Cedar Creek	78612	81	80	93	110	139	71.60%
Elgin	78621	136	146	168	183	214	57.35%
McDade	78650	9	9	14	8	9	0.00%
Paige	78659	15	14	25	17	12	-20.00%
Red Rock	78662	14	31	27	23	22	57.14%
Rosanky	78953	6	6	7	7	9	50.00%
Smithville	78957	53	46	50	65	53	0.00%
Total		467	502	563	638	701	50.11%
%of Grand Total		1.53%	1.57%	1.70%	1.90%	1.96%	
Blanco County¹							
Blanco	78606	16	35	36	28	27	68.75%
Hye	78635	2	2	3	0	2	0.00%
Johnson City	78636	26	29	33	38	27	3.85%
Round Mountain	78663	5	3	8	9	8	60.00%
Total		49	69	80	75	64	30.61%
%of Grand Total		0.16%	0.22%	0.24%	0.22%	0.18%	
Burnet County¹							
Bertram	78605	9	14	11	17	11	22.22%
Briggs	78608	0	0	0	2	1	.
Burnet	78611	24	29	22	21	13	-45.83%
Marble Falls	78654	45	30	42	36	35	-22.22%
Total		78	73	75	76	60	-23.08%
%of Grand Total		0.26%	0.23%	0.23%	0.23%	0.17%	

¹ These numbers do not represent total enrollment for the county due to zip codes that span more than one county.

NOTES: Headcount based on zip code data as reported and entered in the ACC database. Zip code regions are based on definitions developed by ACC administration.

Source: Fall 12th Class Day Data

Headcount by Region and Zip Code (continued)
Fall 2004 - 2008

Region	Zip Code	Fall 2004	Fall 2005	Fall 2006	Fall 2007	Fall 2008	04-08 %chg
Caldwell County¹							
Dale	78616	42	54	54	72	76	80.95%
Lockhart	78644	156	186	227	215	252	61.54%
Luling	78648	42	59	39	55	73	73.81%
Martindale	78655	30	26	34	24	20	-33.33%
Maxwell	78656	21	26	27	22	23	9.52%
Total		291	351	381	388	444	52.58%
%of Grand Total		0.96%	1.10%	1.15%	1.16%	1.24%	
Cedar Park/Leander							
Cedar Park	78613	1,264	1,480	1,466	1,602	1,742	37.82%
Leander	78641	795	884	874	981	1111	39.75%
Liberty Hill	78642	87	115	133	142	146	67.82%
Total		2,146	2,479	2,473	2,725	2,999	39.75%
%of Grand Total		7.05%	7.77%	7.49%	8.13%	8.38%	
Georgetown/North Williamson County							
Florence	76527	9	6	15	18	14	55.56%
Granger	76530	5	3	8	9	14	180.00%
Jarrell	76537	19	45	43	41	55	189.47%
Georgetown	78626	167	204	226	221	271	62.28%
Georgetown	78628	315	346	369	406	376	19.37%
Georgetown	78633	0	0	0	11	90	.
Total		515	604	661	706	820	59.22%
%of Grand Total		1.69%	1.89%	2.00%	2.07%	2.29%	
Gillespie County¹							
Doss	78618	2	4	2	5	0	-100.00%
Fredericksburg	78624	140	113	120	110	141	0.71%
Harper	78631	33	32	34	31	25	-24.24%
Stonewall	78671	3	2	3	0	5	66.67%
Willow City	78675	1	1	0	1	1	0.00%
Total		179	152	159	147	172	-3.91%
%of Grand Total		0.59%	0.48%	0.48%	0.44%	0.48%	

¹ These numbers do not represent total enrollment for the county due to zip codes that span more than one county.

NOTES: Headcount based on zip code data as reported and entered in the ACC database. Zip code regions are based on definitions developed by ACC administration.

Source: Fall 12th Class Day Data

**Headcount by Region and Zip Code (continued)
Fall 2004 - 2008**

Region	Zip Code	Fall 2004	Fall 2005	Fall 2006	Fall 2007	Fall 2008	04-08 %chg
Gonzales County							
Leesville	78122	1	1	1	3	2	100.00%
Nixon	78140	11	13	12	22	14	27.27%
Smiley	78159	2	3	6	5	1	-50.00%
Cost	78614	3	4	3	1	4	33.33%
Gonzales	78629	15	21	16	14	6	-60.00%
Waelder	78959	0	0	0	0	2	.
Total		32	42	38	45	29	-9.38%
% of Grand Total		0.11%	0.13%	0.12%	0.13%	0.08%	
Hays County¹							
Buda	78610	194	205	223	254	303	56.19%
Driftwood	78619	18	21	19	21	30	66.67%
Dripping Springs	78620	147	160	136	157	192	30.61%
Kyle	78640	207	277	323	394	438	111.59%
San Marcos	78666	608	584	648	699	691	13.65%
San Marcos	78667	20	17	19	11	14	-30.00%
Wimberley	78676	109	127	123	190	142	30.28%
Austin	78737	151	185	175	169	209	38.41%
Total		1,434	1,559	1,647	1,895	2,019	40.79%
% of Grand Total		4.71%	4.89%	4.99%	5.62%	5.64%	
Manor/East Travis County							
Manor	78653	193	227	258	309	370	91.71%
Austin	78724	226	226	225	246	276	22.12%
Austin	78725	65	89	105	115	132	103.08%
Total		484	542	588	670	778	60.74%
% of Grand Total		1.59%	1.70%	1.78%	2.00%	2.17%	
Pflugerville/Northeast Travis County							
Pflugerville	78660	619	678	778	873	991	60.10%
Austin	78753	930	996	1,003	1,008	1,044	12.26%
Austin	78754	230	260	287	317	370	60.87%
Total		1,779	1,934	2,068	2,198	2,405	35.19%
% of Grand Total		5.84%	6.06%	6.26%	6.56%	6.72%	

¹ These numbers do not represent total enrollment for the county due to zip codes that span more than one county.

NOTES: Headcount based on zip code data as reported and entered in the ACC database. Zip code regions are based on definitions developed by ACC administration.

Source: Fall 12th Class Day Data

Headcount by Region and Zip Code (continued) Fall 2004 - 2008

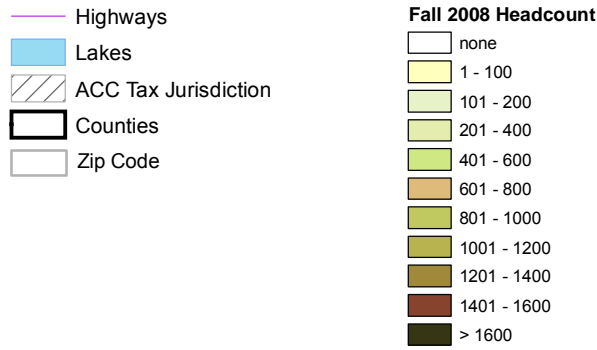
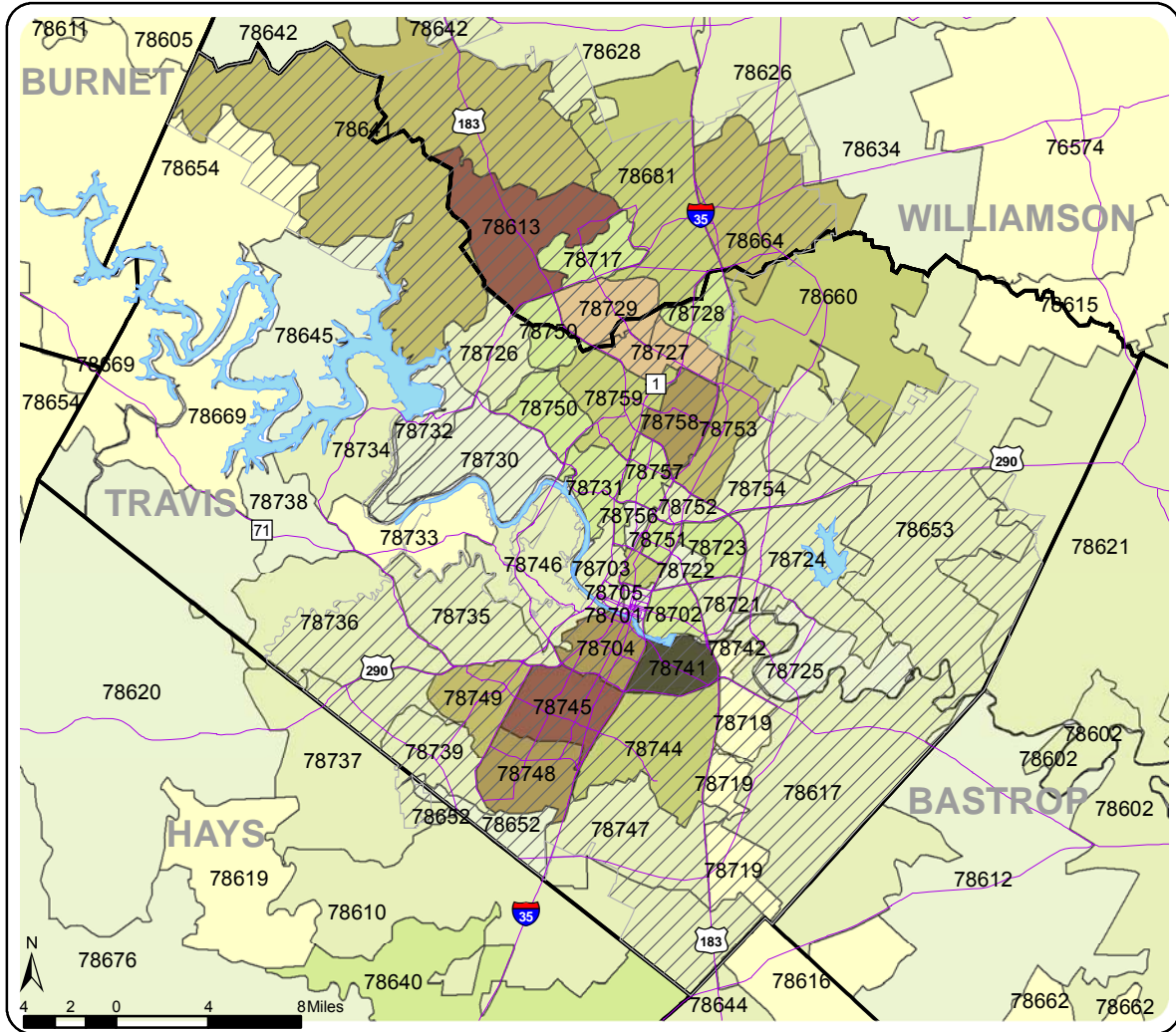
Region	Zip Code	Fall 2004	Fall 2005	Fall 2006	Fall 2007	Fall 2008	04-08 %chg
Round Rock							
Round Rock	78664	778	888	952	1,013	1,163	49.49%
Round Rock	78665	0	0	0	27	307	.
Round Rock	78681	565	544	584	603	846	49.73%
Austin	78717	231	278	358	357	432	87.01%
Austin	78729	434	497	474	544	645	48.62%
Total		2,008	2,207	2,368	2,544	3,393	68.97%
% of Grand Total		6.60%	6.92%	7.17%	7.51%	9.48%	
Taylor/Hutto/East Williamson County							
Taylor	76574	40	33	26	36	33	-17.50%
Thrall	76578	0	3	3	2	6	.
Coupland	78615	9	3	5	5	12	33.33%
Hutto	78634	87	93	118	171	182	109.20%
Total		136	132	152	214	233	71.32%
% of Grand Total		0.45%	0.41%	0.46%	0.64%	0.65%	
West Travis County							
Leander	78645	126	121	147	144	107	-15.08%
Spicewood	78669	64	41	60	53	68	6.25%
Austin	78732	83	105	114	148	136	63.86%
Austin	78733	86	79	77	81	84	-2.33%
Austin	78734	201	191	201	181	214	6.47%
Austin	78738	107	87	93	109	117	9.35%
Total		667	624	692	716	726	8.85%
% of Grand Total		2.19%	1.96%	2.09%	2.14%	2.03%	
Other/Unknown		1,566	1,561	1,942	1,468	1,494	-4.60%
Total		1,566	1,561	1,942	1,468	1,494	-4.60%
% of Grand Total		5.21%	4.95%	5.94%	4.53%	4.17%	
GRAND TOTAL		30,439	31,908	33,039	33,508	35,798	17.61%

NOTES: Headcount based on zip code data as reported and entered in the ACC database. Zip code regions are based on definitions developed by ACC administration.

Source: Fall 12th Class Day Data

Austin Community College Headcount by Zip Code Map Fall 2008

The shaded areas represent the zip code boundaries for data shown on the previous pages.



NOTE: Headcount based on zip code data as reported and entered in the ACC database.

Source: Fall 12th Class Day Data

Headcount by Zip Code Fall 2004 - 2008

Zip Code	Region	Fall 2004	Fall 2005	Fall 2006	Fall 2007	Fall 2008	04-08 % chg
76527	Florence	9	6	15	18	14	55.56%
76530	Granger	5	3	8	9	14	180.00%
76537	Jarrell	19	45	43	41	55	189.47%
76574	Taylor	40	33	26	36	33	-17.50%
76578	Thrall	0	3	3	2	6	.
78122	Leesville	1	1	1	3	2	100.00%
78140	Nixon	11	13	12	22	14	27.27%
78159	Smiley	2	3	6	5	1	-50.00%
78602	Bastrop	153	170	179	225	243	58.82%
78605	Bertram	9	14	11	17	11	22.22%
78606	Blanco	16	35	36	28	27	68.75%
78608	Briggs	0	0	0	2	1	.
78610	Buda	194	205	223	254	303	56.19%
78611	Burnet	24	29	22	21	13	-45.83%
78612	Cedar Creek	81	80	93	110	139	71.60%
78613	Cedar Park	1,264	1,480	1,466	1,602	1,742	37.82%
78614	Cost	3	4	3	1	4	33.33%
78615	Coupland	9	3	5	5	12	33.33%
78616	Dale	42	54	54	72	76	80.95%
78617	Del Valle	153	205	264	265	286	86.93%
78618	Doss	2	4	2	5	0	-100.00%
78619	Driftwood	18	21	19	21	30	66.67%
78620	Dripping Springs	147	160	136	157	192	30.61%
78621	Elgin	136	146	168	183	214	57.35%
78624	Fredericksburg	140	113	120	110	141	0.71%
78626	Georgetown	167	204	226	221	271	62.28%
78628	Georgetown	315	346	369	406	376	19.37%
78629	Gonzales	15	21	16	14	6	-60.00%
78631	Harper	33	32	34	31	25	-24.24%
78633	Georgetown	0	0	0	11	90	.
78634	Hutto	87	93	118	171	182	109.20%
78635	Hye	2	2	3	0	2	0.00%
78636	Johnson City	26	29	33	38	27	3.85%
78640	Kyle	207	277	323	394	438	111.59%
78641	Leander	795	884	874	981	1,111	39.75%
78642	Liberty Hill	87	115	133	142	146	67.82%
78644	Lockhart	156	186	227	215	252	61.54%
78645	Leander	126	121	147	144	107	-15.08%
78648	Luling	42	59	39	55	73	73.81%

¹ These numbers do not represent total enrollment for the county due to zip codes that span more than one county.

NOTES: Headcount based on zip code data as reported and entered in the ACC database. Zip code regions are based on definitions developed by ACC administration.

Source: Fall 12th Class Day Data

Headcount by Zip Code (continued)
Fall 2004 - 2008

Zip Code	Region	Fall 2004	Fall 2005	Fall 2006	Fall 2007	Fall 2008	04-08 %chg
78650	McDade Bastrop County ¹	9	9	14	8	9	0.00%
78652	Manchaca Austin/Travis County, South	100	97	115	88	108	8.00%
78653	Manor Manor/East Travis County	193	227	258	309	370	91.71%
78654	Marble Falls Burnet County ¹	45	30	42	36	35	-22.22%
78655	Martindale Caldwell County ¹	30	26	34	24	20	-33.33%
78656	Maxwell Caldwell County ¹	21	26	27	22	23	9.52%
78659	Paige Bastrop County ¹	15	14	25	17	12	-20.00%
78660	Pflugerville Pflugerville/Northeast Travis County	619	678	778	873	991	60.10%
78662	Red Rock Bastrop County ¹	14	31	27	23	22	57.14%
78663	Round Mountain Blanco County ¹	5	3	8	9	8	60.00%
78664	Round Rock Round Rock	778	888	952	1,013	1,163	49.49%
78665	Round Rock Round Rock	0	0	0	27	307	.
78666	San Marcos Hays County ¹	608	584	648	699	691	13.65%
78667	San Marcos Hays County ¹	20	17	19	11	14	-30.00%
78669	Spicewood West Travis County	64	41	60	53	68	6.25%
78671	Stonewall Gillespie County ¹	3	2	3	0	5	66.67%
78675	Willow City Gillespie County ¹	1	1	0	1	1	0.00%
78676	Wimberley Hays County ¹	109	127	123	190	142	30.28%
78681	Round Rock Round Rock	565	544	584	603	846	49.73%
78701	Austin Austin/Travis County, Central	112	140	127	109	114	1.79%
78702	Austin Austin/Travis County, East	447	479	460	480	531	18.79%
78703	Austin Austin/Travis County, Central	404	389	369	342	351	-13.12%
78704	Austin Austin/Travis County, South	1,302	1,317	1,237	1,134	1,229	-5.61%
78705	Austin Austin/Travis County, Central	1,014	940	918	949	940	-7.30%
78712	Austin Austin/Travis County, Central	0	1	0	1	0	.
78717	Austin Round Rock	231	278	358	357	432	87.01%
78719	Austin Austin/Travis County, Southeast	27	27	26	30	28	3.70%
78721	Austin Austin/Travis County, East	184	198	182	194	235	27.72%
78722	Austin Austin/Travis County, East	186	198	185	187	173	-6.99%
78723	Austin Austin/Travis County, East	618	557	533	507	541	-12.46%
78724	Austin Manor/East Travis County	226	226	225	246	276	22.12%
78725	Austin Manor/East Travis County	65	89	105	115	132	103.08%
78726	Austin Austin/Travis County, Northwest	323	325	312	304	335	3.72%
78727	Austin Austin/Travis County, North	676	686	763	751	740	9.47%
78728	Austin Austin/Travis County, North	308	336	327	337	403	30.84%
78729	Austin Round Rock	434	497	474	544	645	48.62%
78730	Austin Austin/Travis County, Northwest	110	102	120	98	112	1.82%
78731	Austin Austin/Travis County, Northwest	507	541	501	503	461	-9.07%
78732	Austin West Travis County	83	105	114	148	136	63.86%

¹ These numbers do not represent total enrollment for the county due to zip codes that span more than one county.

NOTES: Headcount based on zip code data as reported and entered in the ACC database. Zip code regions are based on definitions developed by ACC administration.

Source: Fall 12th Class Day Data

**Headcount by Zip Code (continued)
Fall 2004 - 2008**

Zip Code	Region	Fall 2004	Fall 2005	Fall 2006	Fall 2007	Fall 2008	04-08 %chg
78733	Austin West Travis County	86	79	77	81	84	-2.33%
78734	Austin West Travis County	201	191	201	181	214	6.47%
78735	Austin Austin/Travis County, Southwest	271	265	259	257	282	4.06%
78736	Austin Austin/Travis County, Southwest	218	218	234	240	240	10.09%
78737	Austin Hays County ¹	151	185	175	169	209	38.41%
78738	Austin West Travis County	107	87	93	109	117	9.35%
78739	Austin Austin/Travis County, Southwest	241	280	296	328	348	44.40%
78741	Austin Austin/Travis County, Southeast	1,702	2,010	2,114	2,006	2,013	18.27%
78742	Austin Austin/Travis County, Southeast	12	15	14	18	15	25.00%
78744	Austin Austin/Travis County, Southeast	721	838	883	869	948	31.48%
78745	Austin Austin/Travis County, South	1,743	1,722	1,791	1,756	1,674	-3.96%
78746	Austin Austin/Travis County, Southwest	309	317	353	355	322	4.21%
78747	Austin Austin/Travis County, Southeast	217	207	225	259	333	53.46%
78748	Austin Austin/Travis County, South	1,045	1,045	1,121	1,166	1251	19.71%
78749	Austin Austin/Travis County, Southwest	1,120	1,086	1,044	1,064	1,046	-6.61%
78750	Austin Austin/Travis County, Northwest	382	414	439	463	525	37.43%
78751	Austin Austin/Travis County, Central	501	507	515	480	499	-0.40%
78752	Austin Austin/Travis County, Central	370	338	349	329	359	-2.97%
78753	Austin Pflugerville/Northeast Travis County	930	996	1,003	1,008	1,044	12.26%
78754	Austin Pflugerville/Northeast Travis County	230	260	287	317	370	60.87%
78756	Austin Austin/Travis County, Central	190	170	190	193	185	-2.63%
78757	Austin Austin/Travis County, Central	587	588	556	522	499	-14.99%
78758	Austin Austin/Travis County, North	1,469	1,456	1,381	1,444	1,391	-5.31%
78759	Austin Austin/Travis County, Northwest	1,019	1,046	930	975	944	-7.36%
78953	Rosanky Bastrop County ¹	6	6	7	7	9	50.00%
78957	Smithville Bastrop County ¹	53	46	50	65	53	0.00%
78959	Waelder Gonzales County	0	0	0	0	2	.
	Other/Unknown	1,566	1,561	1,942	1,468	1,494	-4.60%
	GRAND TOTAL	30,439	31,908	33,039	33,508	35,798	17.61%

¹ These numbers do not represent total enrollment for the county due to zip codes that span more than one county.

NOTES: Headcount based on zip code data as reported and entered in the ACC database. Zip code regions are based on definitions developed by ACC administration.

Source: Fall 12th Class Day Data

**Declared Majors
Fall 2006 - 2008**

Associate of Arts (AA)

	Fall 2006	Fall 2007	Fall 2008	06-08 % chg
Anthropology	120	97	124	3.33%
Art	527	599	616	16.89%
Communications ¹	71	75	0	-100.00%
Creative Writing	46	34	42	-8.70%
Dance	80	75	82	2.50%
Drama	122	136	127	4.10%
Economics	148	127	173	16.89%
English	338	346	390	15.38%
Foreign Lanuage				
Arabic	0	0	6	.
Chinese	0	0	6	.
French	27	32	40	48.15%
General	3	4	4	33.33%
German	18	16	19	5.56%
Japanese	33	41	46	39.39%
Latin	1	1	4	300.00%
Russian	8	11	6	-25.00%
Spanish	124	131	146	17.74%
General Studies in Liberal Arts	2,838	2,654	3,279	15.54%
Early Childhood Education ¹	368	213	177	-51.90%
Grade 4-8 Certification ¹	80	43	33	-58.75%
Geography	36	34	43	19.44%
Geographic Information Systems	2	11	13	550.00%
Government	207	197	237	14.49%
History	313	273	350	11.82%
Journalism	250	268	280	12.00%
Music	346	414	437	26.30%
Performing Arts ¹	8	10	7	-12.50%
Philosophy	76	62	91	19.74%
Psychology	845	871	1,006	19.05%
Radio-Television-Film	403	376	425	5.46%
Social Work	206	189	248	20.39%
Sociology	118	111	140	18.64%
Speech	60	49	59	-1.67%
Undeclared	669	700	474	-29.15%
TOTAL	8,491	8,200	9,130	7.53%

¹ Program is no longer active, but students already in the pipeline may be allowed to complete the degree plan.

Source: Fall 12th Class Day Data

**Declared Majors
Fall 2006 - 2008**

Associate of Arts in Teaching (AAT)

	Fall 2006	Fall 2007	Fall 2008	06-08 % chg
Education				
8-12 Grade Levels	133	254	370	178.20%
EC-4 & 4-8 Grade Levels	91	179	307	237.36%
EC-4 Grade Levels - Early Childhood Specialization	193	451	607	214.51%
TOTAL	417	884	1,284	207.91%

Associate of Science (AS)

	Fall 2006	Fall 2007	Fall 2008	06-08 % chg
Archaeology	.	.	4	.
Biology	542	517	611	12.73%
Business Administration	1,632	1,592	2,027	24.20%
Chemistry	122	118	160	31.15%
Computer Science				
Computer Science	585	554	549	-6.15%
Computer Information Systems	.	.	9	.
Engineering	677	708	791	16.84%
Environmental Studies	56	54	84	50.00%
General Studies in Science	219	240	333	52.05%
Geology	67	52	52	-22.39%
Health & Kinesiology				
Health	228	216	242	6.14%
Kinesiology	337	261	358	6.23%
Mathematics	140	132	177	26.43%
Physical Sciences ¹	11	8	6	-45.45%
Physics - Astronomy	70	82	92	31.43%
Pre-Dental	154	141	129	-16.23%
Pre-Medical	536	665	653	21.83%
Pre-Pharmacy	222	236	266	19.82%
Pre-Veterinary	139	123	138	-0.72%
Undeclared	343	347	204	-40.52%
TOTAL	6,080	6,046	6,885	13.24%

¹ Program is no longer active, but students already in the pipeline may be allowed to complete the degree plan.

NOTE: A "." means that the program did not exist that semester.

Source: Fall 12th Class Day Data

**Declared Majors
Fall 2006 - 2008**

Associate of Applied Science (AAS)

	Fall 2006	Fall 2007	Fall 2008	06-08 % chg
Architectural and Engineering Computer Aided Design				
Architectural Specialization	3	57	142	4633.33%
Electronic Graphics Specialization	.	5	10	.
Interdisciplinary Specialization	2	6	11	450.00%
Mechanical Specialization	1	17	31	3000.00%
Accounting	71	75	52	-26.76%
Accounting Specialist	185	132	252	36.22%
Accounting Technician	73	199	122	67.12%
Professional Accountant ¹	212	90	105	-50.47%
Auto Body Collision and Refinishing	.	.	1	.
Automotive Technology	122	122	129	5.74%
Biotechnology	56	53	55	-1.79%
Building Construction Technology - Construction Management	63	60	86	36.51%
Business & Technical Communication	.	13	35	.
Business & Government Communications	64	99	105	64.06%
Technical Communications	83	78	93	12.05%
Business Management ¹	5	3	2	-60.00%
Child Development	173	150	157	-9.25%
Commercial Art ¹	16	14	17	6.25%
Commercial Music Management	192	182	227	18.23%
Computer Information Technology	58	56	49	-15.52%
Computer Programming	259	256	275	6.18%
Local Area Network Systems-Network Administration	112	116	98	-12.50%
Local Area Network Systems-Security Administration	.	.	31	.
Microcomputer Application Support	31	25	25	-19.35%
Microcomputer Applications - User & Desktop Support	.	3	8	.
Web Programming Specialization	1	10	18	1700.00%
Criminal Justice	6	1	3	-50.00%
Corrections	166	158	168	1.20%
Law Enforcement	405	379	495	22.22%
Law Enforcement Advanced Skills ¹	6	4	1	-83.33%
Culinary Arts	104	115	134	28.85%
Dental Hygiene	146	198	301	106.16%
Electronics and Advanced Technology				
Automation,Robotics and Control Technology	19	20	20	5.26%
Bioinstrumentation Technology Specialization	.	.	4	.
Computer Electronics/Telecommunications	26	24	26	0.00%
Electronic Technology ¹	1	2	.	.
Engineering	108	112	123	13.89%
Power Technology Specialization	2	14	19	850.00%

¹ Program is no longer active, but students already in the pipeline may be allowed to complete the degree plan.

NOTE: A "." means that the program did not exist that semester.

Source: Fall 12th Class Day Data

Declared Majors
Fall 2006 - 2008

Associate of Applied Science (AAS) (continued)

	Fall 2006	Fall 2007	Fall 2008	06-08 % chg
Electronics and Advanced Technology (continued)				
Renewable Energy Specialization	.	.	13	.
Robotics/Instrumentation & Control ¹	3	3	.	.
Semiconductor Manufacturing Technology Technician	31	24	20	-35.48%
Emergency Medical Services Professions	130	130	143	10.00%
Tech Prep ¹	2	2	.	.
Engineering Design Graphics ¹	15	10	8	-46.67%
Architectural Specialty ¹	223	225	142	-36.32%
Electronic Graphics Specialty ¹	31	21	17	-45.16%
Interdisciplinary Specialty ¹	8	9	4	-50.00%
Mechanical Specialty ¹	43	32	24	-44.19%
Environmental Technology	19	21	27	42.11%
Financial Management and Mortgage Banking	38	27	41	7.89%
Fire Protection Technology	74	62	97	31.08%
Game Development				
Game & Visualization Programming Specialization	.	.	8	.
Game Art Specialization	.	.	8	.
Game Design Specialization	.	.	11	.
Heating, Air Conditioning, & Refrigeration Technology	40	49	62	55.00%
Hospitality Management	1	.	2	100.00%
Baccalaureate Prep Specialization	9	8	15	66.67%
Food & Lodging Specialization	13	8	8	-38.46%
Hotel & Lodging Specialization	22	13	13	-40.91%
Hotel Specialization ¹	.	3	3	.
Meeting and Event Planning Specialization	23	22	30	30.43%
Restaurant Specialization ¹	.	1	1	.
Travel & Tourism	6	10	17	183.33%
Human Services				
Addictions Counseling	57	40	68	19.30%
General Human Services	89	81	82	-7.87%
Interpreter Preparation Program	59	74	103	74.58%
Therapeutic Recreation	20	19	18	-10.00%
International Business	19	46	80	321.05%
Jewelry	15	18	27	80.00%
Land Surveying Technology/Geomatics	17	25	24	41.18%
Legal Assistant ¹	155	146	114	-26.45%
Management	306	296	325	6.21%
Administrative Specialist ¹	1	2	1	0.00%

¹ Program is no longer active, but students already in the pipeline may be allowed to complete the degree plan.

NOTE: A "." means that the program did not exist that semester.

Source: Fall 12th Class Day Data

**Declared Majors
Fall 2006 - 2008**

Associate of Applied Science (AAS) (continued)

	Fall 2006	Fall 2007	Fall 2008	06-08 % chg
Marketing	234	232	240	2.56%
Fashion Merchandising	108	109	96	-11.11%
Medical Laboratory Technology	72	82	77	6.94%
Nursing				
Nursing Mobility Track	40	76	135	237.50%
Nursing Traditional Track	476	921	2,391	402.31%
Occupational Therapy Assistant	45	53	68	51.11%
Office Administration	17	15	11	-35.29%
Administrative Assistant	35	34	54	54.29%
Legal Administrative Assistant	19	19	20	5.26%
Medical Administrative Assistant	42	39	47	11.90%
Paralegal	.	.	49	.
Personal Fitness Trainer	16	19	43	168.75%
Photographic Technology				
Advertising-Fashion Focus	61	57	70	14.75%
People-Portrait Focus	61	53	62	1.64%
Photography & Graphic Arts ¹	1	1	1	0.00%
Professional Photography ¹	5	5	3	-40.00%
Physical Fitness Technician ¹	3	12	6	100.00%
Physical Therapist Assistant	212	191	211	-0.47%
Printing & Desktop Publishing Production ¹	16	13	.	.
Quality Assurance Management & Technology ¹	.	2	.	.
Radiology ¹	388	406	427	10.05%
Real Estate	96	115	111	15.63%
Sonography				
Diagnostic Cardiac Sonography	25	30	54	116.00%
Diagnostic Medical Sonography	72	95	209	190.28%
Surgical Technology	81	74	93	14.81%
Undeclared	305	342	223	-26.89%
Visual Communication Design	61	47	30	-50.82%
2D Animation Specialization	25	25	38	52.00%
3D Animation Specialization	111	112	133	19.82%
3D Modeling Specialization	.	.	9	.
Graphic Arts Technology Specialization	.	6	25	.
Graphic Design Specialization	128	146	217	69.53%
Interactive Design Specialization	23	32	40	73.91%
Welding Technology	.	2	6	.
Art Metals	40	28	28	-30.00%
Code Welding	36	32	35	-2.78%
Code Welding-US Navy - Tech Prep ¹	4	2	3	-25.00%
TOTAL	7,168	7,754	10,313	43.88%

¹ Program is no longer active, but students already in the pipeline may be allowed to complete the degree plan.

NOTE: A "." means that the program did not exist that semester.

Source: Fall 12th Class Day Data

Declared Majors Fall 2006 - 2008

Certificates

	Fall 2006	Fall 2007	Fall 2008	06-08 % chg
Accounting				
Accounting Clerk	103	119	141	36.89%
Professional Accountant	39	55	82	110.26%
Architectural and Engineering Computer Aided Design				
Architectural and Engineering CAD	2	14	65	3150.00%
Civil CAD Specialization	.	.	4	.
Integrated Circuit Layout & Design Specialization	1	4	23	2200.00%
Auto Body Collision and Refinishing				
Auto Body Collision Repair	.	.	5	.
Auto Body Refinishing	.	.	1	.
Automotive Technology				
Automotive Drive Train Specialist	8	6	3	-62.50%
Automotive Engine Performance Specialist	24	29	38	58.33%
Automotive Heating & Air Conditioning	13	8	9	-30.77%
Automotive Technician	87	85	123	41.38%
Automotive Technology Advanced Skills Certificate ¹	0	1	5	.
Automotive Technology Enhanced Skills Certificate	8	9	12	50.00%
Brake & Suspension	6	3	7	16.67%
Marine Engine Repair	5	4	6	20.00%
Motorcycle Repair	16	14	13	-18.75%
Small Engine Repair	1	5	8	700.00%
Biotechnology	29	42	38	31.03%
Building Construction Technology	0	1	1	.
Cabinetry & Interior Finishes ¹	3	3	3	0.00%
Carpentry	38	24	29	-23.68%
Construction Manager	12	24	33	175.00%
Enhanced Skills Certificate ¹	0	2	0	.
Woodworking	16	17	17	6.25%
Business and Technical Communications				
Business & Government Communications	203	312	341	67.98%
Technical Communications	103	149	135	31.07%
Business Management ¹	0	1	0	.
Child Development	250	336	306	22.40%
Enhanced Skills	25	35	23	-8.00%
Computer Information Technology				
Computer Information Technology Database	67	77	78	16.42%
Computer Programming-C++ Track	47	43	45	-4.26%
Computer Programming-Java Track	25	30	36	44.00%
Local Area Network Systems Network Administration	25	19	21	-16.00%
Web Developer Specialist	27	46	34	25.93%

¹ Program is no longer active, but students already in the pipeline may be allowed to complete the degree plan.

NOTE: A "." means that the program did not exist that semester.

Source: Fall 12th Class Day Data

**Declared Majors
Fall 2006 - 2008**

Certificates (continued)

	Fall 2006	Fall 2007	Fall 2008	06-08 % chg
Criminal Justice - Texas Peace Officer Sequence	125	157	142	13.60%
Culinary Arts	50	70	70	40.00%
Culinarian	10	11	20	100.00%
Diagnostic Medical Imaging				
Advanced Technical Certificate	8	7	3	-62.50%
Diagnostic Cardiac Sonography	0	1	0	.
Vascular Technology Enhanced Skills Certificate	0	2	2	.
Digital Publishing & Graphics Technology ¹				
Desktop Publishing ¹	2	4	0	-100.00%
Printing Production ¹	3	1	0	-100.00%
Printing Prepress & Production ¹	0	1	1	.
Electronics and Advanced Technologies				
Automation, Robotics and Controls Technology	7	9	9	28.57%
Computer Electronics/Telecommunications	20	24	32	60.00%
Electronic Technology ¹	0	1	0	.
Engineering Technology	57	97	95	66.67%
Power Technology	1	3	8	700.00%
Renewable Energy Specialization	.	.	1	.
Semiconductor Manufacturing Technology Specialist Technician	11	10	9	-18.18%
Technician	22	24	22	0.00%
Emergency Medical Services				
EMT Intermediate Certificate	13	22	22	69.23%
EMT Paramedic Certificate	29	36	34	17.24%
Engineering Design Graphics ¹	50	47	26	-48.00%
Integrated Circuit Layout & Design Specialist ¹	4	8	3	-25.00%
Environmental Science and Technology	1	0	7	600.00%
Financial Management and Mortgage Banking	5	0	0	-100.00%
Financial Management ¹	0	1	0	.
Mortgage Banking	0	10	7	.
Fire Protection	55	76	67	21.82%
Game Development				
Game Art	.	.	1	.
Heating, Air Conditioning & Refrigeration	63	47	53	-15.87%
Hospitality Management	26	33	31	19.23%
Meeting Planning	20	14	12	-40.00%
Travel & Tourism	18	29	33	83.33%

¹ Program is no longer active, but students already in the pipeline may be allowed to complete the degree plan.

NOTE: A "." means that the program did not exist that semester.

Source: Fall 12th Class Day Data

**Declared Majors
Fall 2006 - 2008**

Certificates (continued)

	Fall 2006	Fall 2007	Fall 2008	06-08 % chg
Human Services	2	1	2	0.00%
Addictions Counseling	26	36	44	69.23%
Addictions Counseling in the Criminal Justice System	.	0	6	.
American Sign Language Studies	38	57	55	44.74%
Interpreter Preparation Program	19	24	29	52.63%
Therapeutic Recreation	14	27	25	78.57%
International Business	78	55	66	-15.38%
Jewelry	22	23	32	45.45%
Land Surveying Technology/Geomatics	10	7	9	-10.00%
Management	9	4	4	-55.56%
Administrative Management	83	106	121	45.78%
International Business ¹	.	7	6	.
Legal Assistant	68	66	72	5.88%
Management Specialties Leadership	13	18	27	107.69%
Small Business Management	86	87	68	-20.93%
Marketing	1	1	1	0.00%
Basic Skills	96	128	112	16.67%
Enhanced Skills Certificate	26	30	22	-15.38%
Fashion Merchandising	54	53	41	-24.07%
Medical Coding Specialist	45	67	62	37.78%
Nursing (Vocational)	463	494	511	10.37%
Office Administration				
Administrative Assistant	32	34	28	-12.50%
Enhanced Skills	0	0	1	.
Legal Administrative Assistant Specialization	12	17	18	50.00%
Medical Administrative Assistant Specialization	19	14	4	-78.95%
Medical Office Assistant Specialization	28	36	41	46.43%
Office Assistant	16	21	27	68.75%
Software Applications Specialist	3	6	3	0.00%
Paralegal	0	0	2	.
Personal Fitness Technology ¹	44	38	52	18.18%
Pharmacy Technician	93	120	120	29.03%
Photographic Technology				
Digital Assistant	0	1	2	.
Photographic Artist	73	80	63	-13.70%
Photographic Assistant ¹	10	5	3	-70.00%
Photojournalism ¹	15	33	36	140.00%

¹ Program is no longer active, but students already in the pipeline may be allowed to complete the degree plan.

NOTE: A "." means that the program did not exist that semester.

Source: Fall 12th Class Day Data

**Declared Majors
Fall 2006 - 2008**

Certificates (continued)

	Fall 2006	Fall 2007	Fall 2008	06-08 % chg
Physical Fitness Technology ¹	3	3	4	33.33%
Quality Management & Technology Certificate	1	0	0	.
Radiology				
Cardiovascular Interventional Radiology ¹	12	10	18	50.00%
Computerized Tomography ¹	2	2	1	-50.00%
Magnetic Resonance Imaging ¹	1	3	2	100.00%
Radio-Television-Film				
Film/Production Video	37	63	73	97.30%
Film/Video Production Management	14	15	15	7.14%
Industrial Video ¹	0	5	5	.
Industrial Video Production Management ¹	0	4	1	.
Real Estate	143	146	128	-10.49%
Surgical Technology	24	27	34	41.67%
Undeclared	917	1,334	1,224	33.48%
Visual Communication Design				
2D Animation	10	20	21	110.00%
3D Animation	27	37	33	22.22%
3D Modeling	.	.	1	.
Applied Multimedia Technology ¹	11	15	6	-45.45%
Graphic Arts Technology	.	.	15	.
Graphic Design	53	70	94	77.36%
Illustration	.	.	1	.
Interactive Design	7	12	8	14.29%
Prepress ¹	21	19	3	-85.71%
Web Specialization	12	18	14	16.67%
Welding Technology	1	2	2	100.00%
Art Metals	20	26	20	0.00%
Inspection	9	18	15	66.67%
Jewelry Fabrication ¹	0	2	1	.
Metal Sculpture	16	16	16	0.00%
Pipe Welding	11	8	9	-18.18%
Plate Welding	16	13	20	25.00%
Ultrahigh Purity Piping	1	1	1	0.00%
TOTAL	4,650	5,847	5,895	26.77%

¹ Program is no longer active, but students already in the pipeline may be allowed to complete the degree plan.

NOTE: A "." means that the program did not exist that semester.

Source: Fall 12th Class Day Data

**Declared Majors
Fall 2006 - 2008**

Other

	Fall 2006	Fall 2007	Fall 2008	06-08 % chg
No Major Data	128	0	0	.
Pre-Nursing Mobility Track Prerequisites	144	122	22	-84.72%
Pre-Nursing Traditional Track Prerequisites	1,450	983	160	-88.97%
Pre-Sonography Prerequisites	140	82	14	-90.00%
Undeclared	853	733	263	-69.17%
Intend to Transfer	2,503	1,921	999	-60.09%
Major Not Offered	322	327	285	-11.49%
Non-Degree Seeking	303	274	226	-25.41%
Taking Courses for Self Improvement	390	335	322	-17.44%
TOTAL	6,233	4,777	2,291	-63.24%

**Declared Majors Summary
Fall 2006 - 2008**

	Fall 2006	Fall 2007	Fall 2008	06-08 % chg
Associates of Arts	8,491	8,200	9,130	7.53%
Associates of Arts in Teaching	417	884	1,284	207.91%
Associates of Science	6,080	6,046	6,885	13.24%
Associates of Applied Science	7,168	7,754	10,313	43.88%
Certificates	4,650	5,847	5,895	26.77%
Other	6,233	4,777	2,291	-63.24%
TOTAL	33,039	33,508	35,798	8.35%

**High School Concurrent Enrollment by School District
Fall 2004 - 2008**

School District	Headcount					04-08
	Fall 2004	Fall 2005	Fall 2006	Fall 2007	Fall 2008	% Chg
Austin ISD	237	368	469	396	439	85.23%
Bastrop ISD	23	53	68	67	99	330.43%
Blanco ISD	8	26	22	15	21	162.50%
Del Valle ISD	39	1	24	18	43	10.26%
Dripping Springs ISD	46	69	42	51	92	100.00%
Eanes ISD	48	36	36	22	21	-56.25%
Elgin ISD	14	9	17	17	44	214.29%
Fredericksburg ISD	36	32	34	36	49	36.11%
Georgetown ISD	105	140	146	129	158	50.48%
Harper ISD	24	28	31	32	20	-16.67%
Hays CISD	44	65	78	95	122	177.27%
Jarrell ISD	16	43	34	18	34	112.50%
Johnson City ISD	14	14	12	14	14	0.00%
Lago Vista ISD	15	21	30	35	8	-46.67%
Lake Travis ISD	98	61	86	79	79	-19.39%
Leander ISD	95	165	200	285	288	203.16%
Liberty Hill ISD	46	72	89	97	96	108.70%
Lockhart ISD	53	123	126	140	157	196.23%
Luling ISD	20	45	29	40	48	140.00%
Manor ISD	16	19	20	37	44	175.00%
Nixon-Smilely ISD	14	18	18	29	17	21.43%
Pflugerville ISD	61	58	65	53	121	98.36%
Prairie Lea ISD	1	1	1	4	1	0.00%
Round Rock ISD	146	113	99	167	194	32.88%
San Marcos CISD	33	24	46	62	51	54.55%
Smithville ISD	-	5	5	5	4	-
Wimberley ISD	17	20	22	97	45	164.71%
Other ¹	231	269	361	376	441	90.91%
TOTAL	1,500	1,898	2,210	2,416	2,750	83.33%

¹ Other includes home-schooled students, students enrolled in private schools, and students with no high school identified.

NOTES: Concurrently enrolled students are enrolled in high school (as juniors and seniors) and in college. These students receive college credit and may receive high school graduation credit for the classes they take at ACC.

Source: Fall 12th Class Day Data

**Student Characteristics
First-Time in College Students
Fall 2005 - 2008**

	Fall 2005		Fall 2006		Fall 2007		Fall 2008		05-08 % chg
Student Headcount	3,880		4,565		4,283		4,859		25.23%
Residency									
In-District	2,595	66.9%	2,954	64.7%	2,736	63.9%	3,438	70.8%	32.49%
Out-of-District	1,134	29.2%	1,427	31.3%	1,373	32.1%	1,228	25.3%	8.29%
Out-of-State/International	116	3.0%	147	3.2%	121	2.8%	127	2.6%	9.48%
Other/Unknown ¹	35	0.9%	37	0.8%	53	1.2%	66	1.4%	88.57%
Gender									
Male	1,975	50.9%	2,263	49.6%	2,088	48.8%	2,463	50.7%	24.71%
Female	1,905	49.1%	2,302	50.4%	2,195	51.2%	2,396	49.3%	25.77%
Ethnicity									
White	2,104	54.2%	2,352	51.5%	2,335	54.5%	2,581	53.1%	22.67%
Black	339	8.7%	412	9.0%	410	9.6%	416	8.6%	22.71%
Hispanic	1,169	30.1%	1,451	31.8%	1,219	28.5%	1,504	31.0%	28.66%
Asian/Pacific Islander	132	3.4%	162	3.5%	185	4.3%	243	5.0%	84.09%
Am. Indian/Alaskan Native	36	0.9%	47	1.0%	48	1.1%	46	0.9%	27.78%
Non-Resident Alien	61	1.6%	67	1.5%	48	1.1%	27	0.6%	-55.74%
Other/Unknown	39	1.0%	74	1.6%	38	0.9%	42	0.9%	7.69%
Age									
16 and Under	9	0.2%	14	0.3%	15	0.4%	9	0.2%	0.00%
17	147	3.8%	161	3.5%	165	3.9%	143	2.9%	-2.72%
18	1,915	49.4%	2,142	46.9%	2,138	49.9%	2,376	48.9%	24.07%
19-21	1,049	27.0%	1,240	27.2%	1,111	25.9%	1,249	25.7%	19.07%
22-24	292	7.5%	341	7.5%	294	6.9%	338	7.0%	15.75%
25-30	257	6.6%	339	7.4%	293	6.8%	375	7.7%	45.91%
31-35	94	2.4%	143	3.1%	95	2.2%	162	3.3%	72.34%
36-50	98	2.5%	165	3.6%	147	3.4%	176	3.6%	79.59%
51-64	17	0.4%	18	0.4%	20	0.5%	30	0.6%	76.47%
65 and Over	2	0.1%	2	0.0%	2	0.0%	1	0.0%	-50.00%
Unknown	0	0.0%	0	0.0%	3	0.1%	0	0.0%	.
Average Age	20.49	.	20.88	.	20.62	.	20.95	.	2.24%

¹ Other includes students with tuition exemptions and waivers.

NOTE: First-time in college students have never attended college or any other postsecondary institution and are not reported as first-time-entering college until they have completed their high school work.

Source: Fall 12th Class Day Data

**Student Characteristics
Developmental Education - Reading
Fall 2006 - 2008**

	Fall 2006		Fall 2007		Fall 2008		06-08 % Chg
Student Headcount	1,101		1,064		1,124		2.09%
Residency							
In-District	789	71.66%	716	67.29%	835	74.29%	5.83%
Out-of-District	259	23.52%	306	28.76%	270	24.02%	4.25%
Out-of-State/International	37	3.36%	32	3.01%	17	1.51%	-54.05%
Other/Unknown ¹	16	1.45%	10	0.94%	2	0.18%	-87.50%
Gender							
Male	457	41.51%	427	40.13%	447	39.77%	-2.19%
Female	644	58.49%	637	59.87%	677	60.23%	5.12%
Student Status							
Part-time	1,043	94.73%	999	93.89%	1,067	94.93%	2.30%
Full-time ²	58	5.27%	65	6.11%	57	5.07%	-1.72%
Ethnicity							
White	321	29.16%	312	29.32%	349	31.05%	8.72%
Black	218	19.80%	226	21.24%	223	19.84%	2.29%
Hispanic	457	41.51%	425	39.94%	467	41.55%	2.19%
Asian/Pacific Islander	51	4.63%	56	5.26%	50	4.45%	-1.96%
Am. Indian/Alaskan Native	6	0.54%	11	1.03%	9	0.80%	50.00%
Non-Resident Alien	27	2.45%	15	1.41%	5	0.44%	-81.48%
Other/Unknown	21	1.91%	19	1.79%	21	1.87%	0.00%
Age							
16 and Under	3	0.27%	2	0.19%	3	0.27%	0.00%
17	26	2.36%	24	2.26%	36	3.20%	38.46%
18	366	33.24%	383	36.00%	412	36.65%	12.57%
19-21	400	36.33%	383	36.00%	386	34.34%	-3.50%
22-24	110	9.99%	98	9.21%	98	8.72%	-10.91%
25-30	103	9.36%	77	7.24%	87	7.74%	-15.53%
31-35	35	3.18%	37	3.48%	41	3.65%	17.14%
36-50	52	4.72%	53	4.98%	53	4.72%	1.92%
51-64	5	0.45%	6	0.56%	8	0.71%	60.00%
65 and Over	1	0.09%	1	0.09%	0	0.00%	-100.00%
Unknown	0	0.00%	0	0.00%	0	0.00%	.
Average Age	21.63	.	21.57	.	21.48	.	-0.69%

¹ Other includes students with tuition exemptions and waivers.

² Full-time - 12 credit hours or more.

NOTE: Unduplicated headcount of students who were enrolled in at least one Developmental Reading course.

Source: Fall 12th Class Day Data

**Student Characteristics
Developmental Education - Writing
Fall 2006 - 2008**

	Fall 2006		Fall 2007		Fall 2008		06-08 % Chg
Student Headcount	673		667		704		4.61%
Residency							
In-District	500	74.29%	464	69.57%	544	77.27%	8.80%
Out-of-District	146	21.69%	182	27.29%	149	21.16%	2.05%
Out-of-State/International	17	2.53%	18	2.70%	10	1.42%	-41.18%
Other/Unknown ¹	10	1.49%	3	0.45%	1	0.14%	-90.00%
Gender							
Male	335	49.78%	331	49.63%	344	48.86%	2.69%
Female	338	50.22%	336	50.37%	360	51.14%	6.51%
Student Status							
Part-time	606	90.04%	602	90.25%	652	92.61%	7.59%
Full-time ²	67	9.96%	65	9.75%	52	7.39%	-22.39%
Ethnicity							
White	203	30.16%	220	32.98%	228	32.39%	12.32%
Black	117	17.38%	131	19.64%	153	21.73%	30.77%
Hispanic	291	43.24%	250	37.48%	291	41.34%	0.00%
Asian/Pacific Islander	28	4.16%	32	4.80%	26	3.69%	-7.14%
Am. Indian/Alaskan Native	4	0.59%	6	0.90%	1	0.14%	-75.00%
Non-Resident Alien	14	2.08%	12	1.80%	2	0.28%	-85.71%
Other/Unknown	16	2.38%	16	2.40%	3	0.43%	-81.25%
Age							
16 and Under	1	0.15%	1	0.15%	0	0.00%	-100.00%
17	10	1.49%	10	1.50%	15	2.13%	50.00%
18	197	29.27%	191	28.64%	194	27.56%	-1.52%
19-21	237	35.22%	237	35.53%	256	36.36%	8.02%
22-24	83	12.33%	76	11.39%	72	10.23%	-13.25%
25-30	64	9.51%	54	8.10%	55	7.81%	-14.06%
31-35	26	3.86%	33	4.95%	35	4.97%	34.62%
36-50	47	6.98%	51	7.65%	62	8.81%	31.91%
51-64	8	1.19%	11	1.65%	15	2.13%	87.50%
65 and Over	0	0.00%	2	0.30%	0	0.00%	.
Unknown	1	0.15%	1	0.15%	0	0.00%	-100.00%
Average Age	22.67	.	23.22	.	23.40	.	3.22%

¹ Other includes students with tuition exemptions and waivers.

² Full-time - 12 credit hours or more.

NOTE: Unduplicated headcount of students who were enrolled in at least one Developmental Writing course.

Source: Fall 12th Class Day Data

**Student Characteristics
Developmental Education - Math
Fall 2006 - 2008**

	Fall 2006		Fall 2007		Fall 2008		06-08 % Chg
Student Headcount	6,765		6,690		7,109		5.08%
Residency							
In-District	4,760	70.36%	4,632	69.24%	5,400	75.96%	13.45%
Out-of-District	1,771	26.18%	1,854	27.71%	1,518	21.35%	-14.29%
Out-of-State/International	204	3.02%	169	2.53%	145	2.04%	-28.92%
Other/Unknown ¹	30	0.44%	35	0.52%	46	0.65%	53.33%
Gender							
Male	2,816	41.63%	2,718	40.63%	2,973	41.82%	5.58%
Female	3,949	58.37%	3,972	59.37%	4,136	58.18%	4.74%
Student Status							
Part-time	4,571	67.57%	4,539	67.85%	4,980	70.05%	8.95%
Full-time ²	2,194	32.43%	2,151	32.15%	2,129	29.95%	-2.96%
Ethnicity							
White	3,334	49.28%	3,375	50.45%	3,495	49.16%	4.83%
Black	770	11.38%	817	12.21%	892	12.55%	15.84%
Hispanic	2,231	32.98%	2,081	31.11%	2,293	32.25%	2.78%
Asian/Pacific Islander	176	2.60%	220	3.29%	222	3.12%	26.14%
Am. Indian/Alaskan Native	72	1.06%	61	0.91%	72	1.01%	0.00%
Non-Resident Alien	90	1.33%	65	0.97%	43	0.60%	-52.22%
Other/Unknown	92	1.36%	71	1.06%	92	1.29%	0.00%
Age							
16 and Under	13	0.19%	6	0.09%	4	0.06%	-69.23%
17	85	1.26%	108	1.61%	82	1.15%	-3.53%
18	1,149	16.98%	1,225	18.31%	1,279	17.99%	11.31%
19-21	2,435	35.99%	2,345	35.05%	2,462	34.63%	1.11%
22-24	970	14.34%	975	14.57%	986	13.87%	1.65%
25-30	1,107	16.36%	1,012	15.13%	1,141	16.05%	3.07%
31-35	421	6.22%	427	6.38%	492	6.92%	16.86%
36-50	519	7.67%	532	7.95%	561	7.89%	8.09%
51-64	64	0.95%	51	0.76%	99	1.39%	54.69%
65 and Over	2	0.03%	7	0.10%	3	0.04%	50.00%
Unknown	0	0.00%	2	0.03%	0	0.00%	.
Average Age	23.85	.	23.82	.	24.11	.	1.09%

¹ Other includes students with tuition exemptions and waivers.

² Full-time - 12 credit hours or more.

NOTE: Unduplicated headcount of students who were enrolled in at least one Developmental Math course.

Source: Fall 12th Class Day Data

**Student Characteristics
Developmental Education - Other¹
Fall 2006 - 2008**

	Fall 2006		Fall 2007		Fall 2008		06-08 % Chg
Student Headcount	1,160		1,291		1,303		12.33%
Residency							
In-District	852	73.45%	893	69.17%	963	73.91%	13.03%
Out-of-District	257	22.16%	340	26.34%	316	24.25%	22.96%
Out-of-State/International	36	3.10%	35	2.71%	15	1.15%	-58.33%
Other/Unknown ²	15	1.29%	23	1.78%	9	0.69%	-40.00%
Gender							
Male	511	44.05%	548	42.45%	587	45.05%	14.87%
Female	649	55.95%	743	57.55%	716	54.95%	10.32%
Student Status							
Part-time	959	82.67%	1,064	82.42%	1,073	82.35%	11.89%
Full-time ³	201	17.33%	227	17.58%	230	17.65%	14.43%
Ethnicity							
White	456	39.31%	472	36.56%	512	39.29%	12.28%
Black	184	15.86%	223	17.27%	215	16.50%	16.85%
Hispanic	435	37.50%	483	37.41%	495	37.99%	13.79%
Asian/Pacific Islander	38	3.28%	45	3.49%	41	3.15%	7.89%
Am. Indian/Alaskan Native	7	0.60%	17	1.32%	10	0.77%	42.86%
Non-Resident Alien	24	2.07%	25	1.94%	10	0.77%	-58.33%
Other/Unknown	16	1.38%	26	2.01%	20	1.53%	25.00%
Age							
16 and Under	1	0.09%	1	0.08%	1	0.08%	0.00%
17	21	1.81%	28	2.17%	35	2.69%	66.67%
18	327	28.19%	382	29.59%	396	30.39%	21.10%
19-21	439	37.84%	487	37.72%	462	35.46%	5.24%
22-24	137	11.81%	150	11.62%	129	9.90%	-5.84%
25-30	126	10.86%	126	9.76%	140	10.74%	11.11%
31-35	46	3.97%	41	3.18%	68	5.22%	47.83%
36-50	58	5.00%	66	5.11%	57	4.37%	-1.72%
51-64	5	0.43%	9	0.70%	15	1.15%	200.00%
65 and Over	0	0.00%	1	0.08%	0	0.00%	.
Unknown	0	0.00%	0	0.00%	0	0.00%	.
Average Age	22.06	.	22.03	.	22.15	.	0.41%

¹ Other includes human development and study skills.

² Other includes students with tuition exemptions and waivers.

³ Full-time - 12 credit hours or more.

NOTE: Unduplicated headcount of students who were enrolled in at least one Developmental Other¹ course.

Source: Fall 12th Class Day Data

THIS PAGE INTENTIONALLY LEFT BLANK

**Student Characteristics
District-wide
Spring 2005 - 2009**

	Spring 2005	Spring 2006	Spring 2007	Spring 2008	Spring 2009	05-09 % chg
Student Headcount	29,350	29,852	31,148	32,369	36,601	24.71%
Credit Hours	228,765	233,072	243,115	252,894	284,414	24.33%
Average Credit Hours	7.79	7.81	7.81	7.81	7.77	-0.30%
Contact Hours	4,425,608	4,502,720	4,706,752	4,911,800	5,506,734	24.43%
Average Contact Hours	150.79	150.83	151.11	151.74	150.45	-0.22%
Full-time Student Equivalent (FTSE)¹	15,251	15,538	16,208	16,860	18,961	24.33%
Residency						
In-District	20,550 70.02%	21,645 72.51%	22,179 71.21%	22,867 70.64%	28,394 77.58%	38.17%
Out-of-District	7,887 26.87%	7,295 24.44%	8,044 25.83%	8,662 26.76%	7,289 19.91%	-7.58%
Out-of-State/International	554 1.89%	596 2.00%	627 2.01%	497 1.54%	536 1.46%	-3.25%
Other/Unknown ²	359 1.22%	316 1.06%	298 0.96%	343 1.06%	382 1.04%	6.41%
Gender						
Male	12,532 42.70%	12,875 43.13%	13,500 43.34%	13,947 43.09%	16,059 43.88%	28.14%
Female	16,818 57.30%	16,977 56.87%	17,648 56.66%	18,422 56.91%	20,542 56.12%	22.14%
Student Status						
Full-time ³	7,527 25.65%	7,688 25.75%	7,983 25.63%	8,235 25.44%	8,945 24.44%	18.84%
Part-time	21,823 74.35%	22,164 74.25%	23,165 74.37%	24,134 74.56%	27,656 75.56%	26.73%
Ethnicity						
White	17,699 60.30%	17,830 59.73%	18,368 58.97%	19,001 58.70%	21,170 57.84%	19.61%
Black	2,211 7.53%	2,340 7.84%	2,464 7.91%	2,607 8.05%	3,120 8.52%	41.11%
Hispanic	6,544 22.30%	6,814 22.83%	7,421 23.82%	7,676 23.71%	8,918 24.37%	36.28%
Asian/Pacific Islander	1,484 5.06%	1,490 4.99%	1,593 5.11%	1,830 5.65%	2,137 5.84%	44.00%
Am. Indian/Alaskan Native	241 0.82%	247 0.83%	264 0.85%	300 0.93%	332 0.91%	37.76%
Non-Resident Alien	676 2.30%	668 2.24%	591 1.90%	496 1.53%	426 1.16%	-36.98%
Other/Unknown	495 1.69%	463 1.55%	447 1.44%	459 1.42%	498 1.36%	0.61%
Age						
16 and Under	347 1.18%	395 1.32%	572 1.84%	618 1.91%	813 2.22%	134.29%
17	1,008 3.43%	1,108 3.71%	1,245 4.00%	1,542 4.76%	1,730 4.73%	71.63%
18	2,090 7.12%	2,262 7.58%	2,468 7.92%	2,687 8.30%	3,008 8.22%	43.92%
19-21	8,585 29.25%	8,748 29.30%	9,121 29.28%	9,463 29.23%	10,290 28.11%	19.86%
22-24	5,263 17.93%	5,258 17.61%	5,217 16.75%	5,224 16.14%	5,872 16.04%	11.57%
25-30	5,545 18.89%	5,581 18.70%	5,797 18.61%	5,944 18.36%	6,819 18.63%	22.98%
31-35	2,532 8.63%	2,428 8.13%	2,507 8.05%	2,488 7.69%	3,005 8.21%	18.68%
36-50	3,278 11.17%	3,380 11.32%	3,466 11.13%	3,580 11.06%	4,064 11.10%	23.98%
51-64	631 2.15%	629 2.11%	679 2.18%	742 2.29%	914 2.50%	44.85%
65 and Over	71 0.24%	63 0.21%	76 0.24%	81 0.25%	86 0.23%	21.13%
Average Age	26.00	25.83	25.74	25.65	25.81	-0.73%

¹ Full-time Student Equivalent (FTSE) is based on 15 SCH.

² Other includes students with tuition exemptions and waivers.

³ Full-time - 12 credit hours or more.

NOTE: Percents may not add to 100 due to rounding.

Source: Spring 12th Class Day Data

Student Characteristics
Full-Time Student Equivalent (FTSE)¹
Spring 2007 - 2009

	Spring 2007	Spring 2008	Spring 2009	07-09 % chg
Total Students	16,208	16,860	18,961	16.99%
Student Status				
Full-time ²	9,237 56.99%	9,662 57.31%	11,158 58.85%	20.80%
Part-time	6,971 43.01%	7,198 42.69%	7,803 41.15%	11.94%
Residency				
In-District	11,617 71.67%	12,018 71.28%	14,835 78.24%	27.70%
Out-of-District	4,008 24.73%	4,306 25.54%	3,513 18.53%	-12.35%
Out-of-State/International	353 2.18%	283 1.68%	312 1.65%	-11.61%
Other/Unknown ³	229 1.41%	253 1.50%	301 1.59%	31.44%
Gender				
Male	8,863 54.68%	9,260 54.92%	10,257 54.10%	15.73%
Female	7,345 45.32%	7,600 45.08%	8,704 45.90%	18.50%
Ethnicity				
White	9,616 59.33%	9,966 59.11%	11,079 58.43%	15.21%
Black	1,265 7.80%	1,303 7.73%	1,561 8.23%	23.40%
Hispanic	3,783 23.34%	3,907 23.17%	4,527 23.88%	19.67%
Asian/Pacific Islander	805 4.97%	994 5.90%	1,136 5.99%	41.12%
Am. Indian/Alaskan Native	150 0.93%	160 0.95%	175 0.92%	16.67%
Non-Resident Alien	356 2.20%	294 1.74%	242 1.28%	-32.02%
Other/Unknown	232 1.43%	235 1.39%	241 1.27%	3.88%
Age				
16 and Under	165 1.02%	176 1.04%	221 1.17%	33.94%
17	404 2.49%	471 2.79%	539 2.84%	33.42%
18	1,445 8.92%	1,547 9.18%	1,705 8.99%	17.99%
19-21	5,650 34.86%	5,866 34.79%	6,368 33.58%	12.71%
22-24	2,827 17.44%	2,844 16.87%	3,181 16.78%	12.52%
25-30	2,876 17.74%	2,990 17.73%	3,440 18.14%	19.61%
31-35	1,133 6.99%	1,162 6.89%	1,387 7.32%	22.42%
36-50	1,436 8.86%	1,503 8.91%	1,745 9.20%	21.52%
51-64	250 1.54%	277 1.64%	351 1.85%	40.40%
65 and Over	21 0.13%	22 0.13%	23 0.12%	9.52%

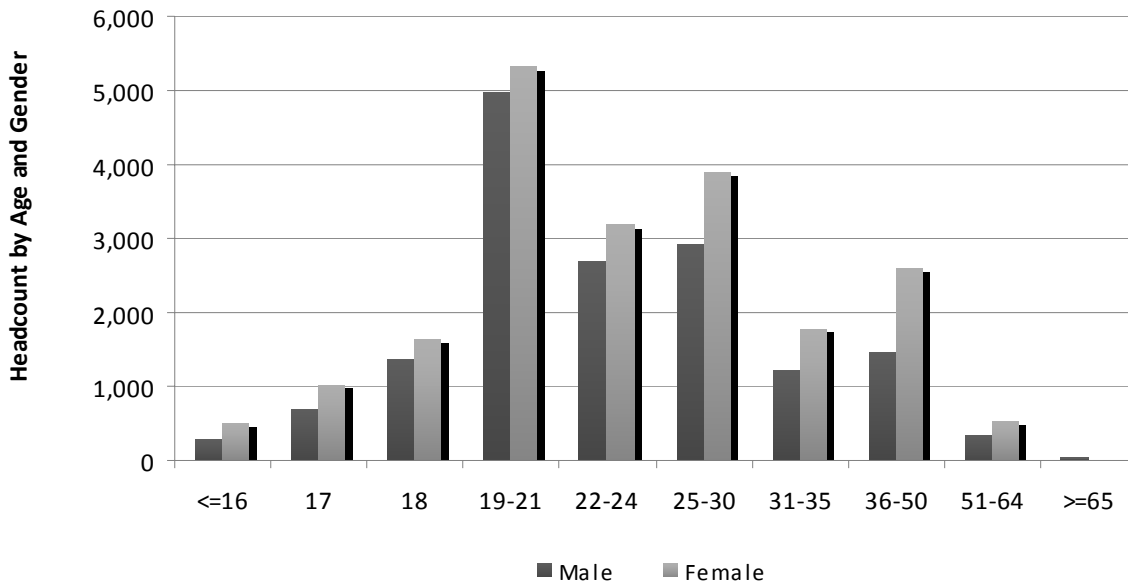
¹ Full-time Student Equivalent (FTSE) is based on 15 SCH.
² Other includes students with tuition exemptions and waivers.
³ Full-time - 12 credit hours or more.

NOTE: Percents may not add to 100 and some numbers may not add up to the totals due to rounding.

Source: Spring 12th Class Day Data

**Student Characteristics
Headcount by Age and Gender
Spring 2009**

Age	Male		Female		Total	
16 and Under	296	1.84%	517	2.52%	813	2.22%
17	708	4.41%	1,022	4.98%	1,730	4.73%
18	1,366	8.51%	1,642	7.99%	3,008	8.22%
19-21	4,972	30.96%	5,318	25.89%	10,290	28.11%
22-24	2,690	16.75%	3,182	15.49%	5,872	16.04%
25-30	2,923	18.20%	3,896	18.97%	6,819	18.63%
31-35	1,221	7.60%	1,784	8.68%	3,005	8.21%
36-50	1,468	9.14%	2,596	12.64%	4,064	11.10%
51-64	362	2.25%	552	2.69%	914	2.50%
65 and Over	53	0.33%	33	0.16%	86	0.23%
TOTAL	16,059	100.00%	20,542	100.00%	36,601	100.00%

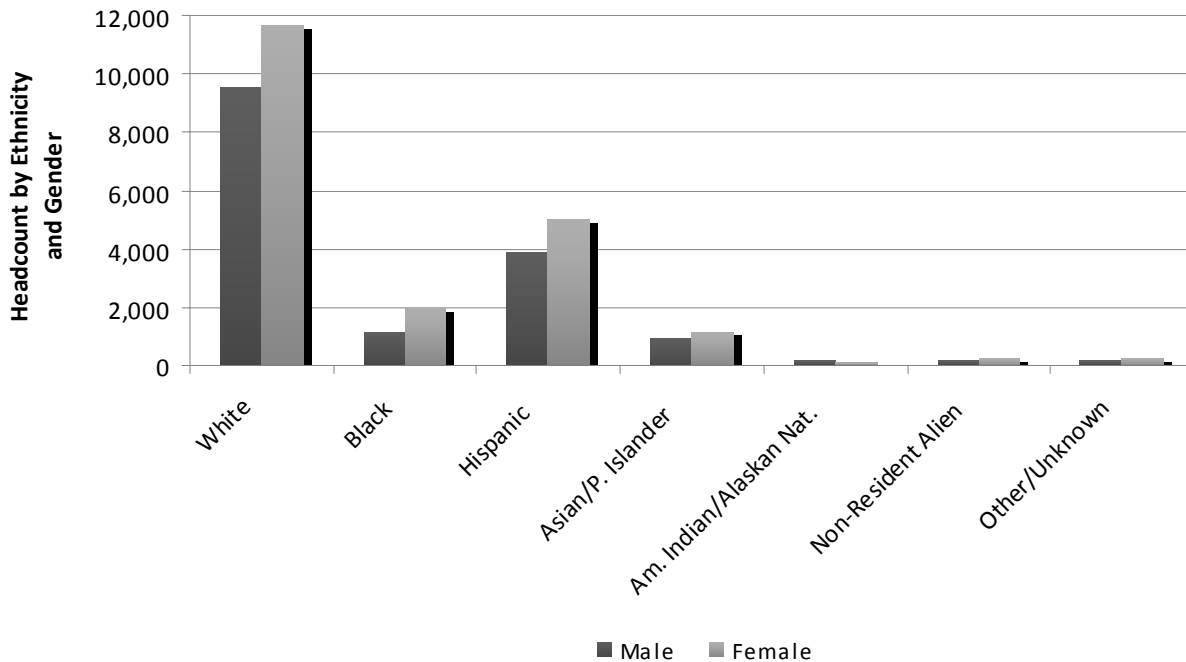


NOTE: Percents may not add to 100 due to rounding.

Source: Spring 12th Class Day Data

Student Characteristics Headcount by Ethnicity and Gender Spring 2009

Ethnicity	Male		Female		Total	
White	9,519	59.28%	11,651	56.72%	21,170	57.84%
Black	1,149	7.15%	1,971	9.59%	3,120	8.52%
Hispanic	3,885	24.19%	5,033	24.50%	8,918	24.37%
Asian/Pacific Islander	937	5.83%	1,200	5.84%	2,137	5.84%
Am. Indian/Alaskan Native	175	1.09%	157	0.76%	332	0.91%
Non-Resident Alien	184	1.15%	242	1.18%	426	1.16%
Other/Unknown	210	1.31%	288	1.40%	498	1.36%
TOTAL	16,059	100.00%	20,542	100.00%	36,601	100.00%



NOTE: Percents may not add to 100 due to rounding.

Source: Spring 12th Class Day Data

Student Characteristics
Headcount by Day/Evening Classification
Spring 2005 - 2009

Classification	Spring 2005	Spring 2006	Spring 2007	Spring 2008	Spring 2009	05-09 % chg
Day	13,574	14,080	14,957	15,232	17,763	30.86%
% of Total	46.25%	47.17%	48.02%	47.06%	48.53%	
Evening	4,393	4,258	4,442	4,332	4,480	1.98%
% of Total	14.97%	14.26%	14.26%	13.38%	12.24%	
Telecommunicated	2,424	2,498	2,572	2,943	3,072	26.73%
% of Total	8.26%	8.37%	8.26%	9.09%	8.39%	
Day & Evening	5,083	5,055	5,397	5,699	6,543	28.72%
% of Total	17.32%	16.93%	17.33%	17.61%	17.88%	
Day & Telecommunicated	2,109	2,160	2,161	2,349	2,660	26.13%
% of Total	7.19%	7.24%	6.94%	7.26%	7.27%	
Evening & Telecommunicated	911	916	846	959	1,070	17.45%
% of Total	3.10%	3.07%	2.72%	2.96%	2.92%	
Day & Evening & Telecommunicated	752	746	689	730	855	13.70%
% of Total	2.56%	2.50%	2.21%	2.26%	2.34%	
Non-identifiable	104	139	84	125	158	51.92%
% of Total	0.35%	0.47%	0.27%	0.39%	0.43%	
Total	29,350	29,852	31,148	32,369	36,601	24.71%

NOTES: Classifications are mutually exclusive. Day students are enrolled in courses that begin before 5:30 PM and evening students are enrolled in courses that begin at or after 5:30 PM. The "Non-identifiable" category includes self-paced courses and courses without designated meeting times. Percents may not add to 100 due to rounding.

Source: Spring 12th Class Day Data

**Headcount by Region and Zip Code
Spring 2005 - 2009**

Region	Zip Code	Spring 2005	Spring 2006	Spring 2007	Spring 2008	Spring 2009	05-09 %chg
Austin/Travis County, Central							
Austin	78701	128	130	123	109	131	2.34%
Austin	78703	362	367	355	331	357	-1.38%
Austin	78705	1,046	941	905	936	1,109	6.02%
Austin	78712	1	0	0	2	0	-100.00%
Austin	78751	505	479	451	502	489	-3.17%
Austin	78752	347	303	297	347	353	1.73%
Austin	78756	192	188	179	162	199	3.65%
Austin	78757	555	541	483	501	497	-10.45%
Total		3,136	2,949	2,793	2,890	3,135	-0.03%
%of Grand Total		10.68%	9.88%	8.97%	8.93%	8.57%	
Austin/Travis County, East							
Austin	78702	429	424	395	461	589	37.30%
Austin	78721	189	190	146	216	268	41.80%
Austin	78722	190	163	152	188	168	-11.58%
Austin	78723	600	517	451	485	585	-2.50%
Total		1,408	1,294	1,144	1,350	1,610	14.35%
%of Grand Total		4.80%	4.33%	3.67%	4.17%	4.40%	
Austin/Travis County, North							
Austin	78727	613	652	632	760	803	31.00%
Austin	78728	297	332	312	340	412	38.72%
Austin	78758	1,373	1,333	1,202	1,425	1,446	5.32%
Total		2,283	2,317	2,146	2,525	2,661	16.56%
%of Grand Total		7.78%	7.76%	6.89%	7.80%	7.27%	
Austin/Travis County, Northwest							
Austin	78726	272	306	254	294	310	13.97%
Austin	78730	102	100	99	97	98	-3.92%
Austin	78731	531	498	457	501	509	-4.14%
Austin	78750	350	400	376	451	585	67.14%
Austin	78759	938	905	816	901	1,019	8.64%
Total		2,193	2,209	2,002	2,244	2,521	14.96%
%of Grand Total		7.47%	7.40%	6.43%	6.93%	6.89%	

NOTES: Headcount based on zip code data as reported and entered in the ACC database. Zip code regions are based on definitions developed by ACC administration.

Source: Spring 12th Class Day Data

Headcount by Region and Zip Code (continued)
Spring 2005 - 2009

Region	Zip Code	Spring 2005	Spring 2006	Spring 2007	Spring 2008	Spring 2009	05-09 % chg
Austin/Travis County, South							
Manhaca	78652	91	85	93	89	94	3.30%
Austin	78704	1,283	1,198	1,087	1,114	1,247	-2.81%
Austin	78745	1,617	1,591	1,530	1,702	1,728	6.86%
Austin	78748	991	981	953	1,132	1,271	28.25%
Total		3,982	3,855	3,663	4,037	4,340	8.99%
% of Grand Total		13.57%	12.91%	11.76%	12.47%	11.86%	
Austin/Travis County, Southeast							
Del Valle	78617	173	213	213	246	293	69.36%
Austin	78719	28	27	24	24	33	17.86%
Austin	78741	1,738	1,990	1,874	1,969	2,024	16.46%
Austin	78742	11	16	14	24	19	72.73%
Austin	78744	738	740	762	813	966	30.89%
Austin	78747	195	193	210	292	365	87.18%
Total		2,883	3,179	3,097	3,368	3,700	28.34%
% of Grand Total		9.82%	10.65%	9.94%	10.41%	10.11%	
Austin/Travis County, Southwest							
Austin	78735	269	238	223	253	301	11.90%
Austin	78736	203	192	171	223	223	9.85%
Austin	78739	241	269	251	302	338	40.25%
Austin	78746	295	315	283	315	345	16.95%
Austin	78749	1,037	955	910	967	1,052	1.45%
Total		2,045	1,969	1,838	2,060	2,259	10.46%
% of Grand Total		6.97%	6.60%	5.90%	6.36%	6.17%	

NOTES: Headcount based on zip code data as reported and entered in the ACC database. Zip code regions are based on definitions developed by ACC administration.

Source: Spring 12th Class Day Data

**Headcount by Region and Zip Code (continued)
Spring 2005 - 2009**

Region	Zip Code	Spring 2005	Spring 2006	Spring 2007	Spring 2008	Spring 2009	05-09 %chg
Bastrop County¹							
Bastrop	78602	142	168	183	212	217	52.82%
Cedar Creek	78612	84	74	84	107	121	44.05%
Elgin	78621	135	143	140	165	218	61.48%
McDade	78650	11	9	10	8	7	-36.36%
Paige	78659	9	16	21	18	14	55.56%
Red Rock	78662	13	22	23	29	27	107.69%
Rosanky	78953	8	7	6	7	6	-25.00%
Smithville	78957	41	35	45	63	41	0.00%
Total		443	474	512	609	651	46.95%
%of Grand Total		1.51%	1.59%	1.64%	1.88%	1.78%	
Blanco County¹							
Blanco	78606	29	33	36	32	32	10.34%
Hye	78635	2	1	0	0	2	0.00%
Johnson City	78636	33	33	30	36	26	-21.21%
Round Mountain	78663	5	9	8	8	8	60.00%
Total		69	76	74	76	68	-1.45%
%of Grand Total		0.24%	0.25%	0.24%	0.23%	0.19%	
Burnet County¹							
Bertram	78605	12	9	16	12	13	8.33%
Briggs	78608	0	0	1	1	1	.
Burnet	78611	28	24	24	20	17	-39.29%
Marble Falls	78654	36	33	26	36	29	-19.44%
Total		76	66	67	69	60	-21.05%
%of Grand Total		0.26%	0.22%	0.22%	0.21%	0.16%	

¹ These numbers do not represent total enrollment for the county due to zip codes that span more than one county.

NOTES: Headcount based on zip code data as reported and entered in the ACC database. Zip code regions are based on definitions developed by ACC administration.

Source: Spring 12th Class Day Data

Headcount by Region and Zip Code (continued)
Spring 2005 - 2009

Region	Zip Code	Spring 2005	Spring 2006	Spring 2007	Spring 2008	Spring 2009	05-09 % chg
Caldwell County¹							
Dale	78616	32	46	56	64	68	112.50%
Lockhart	78644	152	172	185	206	240	57.89%
Luling	78648	42	58	30	38	60	42.86%
Martindale	78655	30	15	18	16	20	-33.33%
Maxwell	78656	23	27	18	23	22	-4.35%
Total		279	318	307	347	410	46.95%
% of Grand Total		0.95%	1.07%	0.99%	1.07%	1.12%	
Cedar Park/Leander							
Cedar Park	78613	1,241	1,352	1,142	1,561	1,733	39.65%
Leander	78641	801	799	698	930	1,114	39.08%
Liberty Hill	78642	75	105	105	145	145	93.33%
Total		2,117	2,256	1,945	2,636	2,992	41.33%
% of Grand Total		7.21%	7.56%	6.24%	8.14%	8.17%	
Georgetown/North Williamson County							
Florence	76527	12	8	10	15	15	25.00%
Granger	76530	3	6	10	10	13	333.33%
Jarrell	76537	21	32	39	44	58	176.19%
Georgetown	78626	159	170	177	252	261	64.15%
Georgetown	78628	311	331	329	375	358	15.11%
Georgetown	78633	0	0	0	21	89	.
Total		506	547	565	717	794	56.92%
% of Grand Total		1.72%	1.83%	1.81%	2.22%	2.17%	
Gillespie County¹							
Doss	78618	3	4	2	2	2	-33.33%
Fredericksburg	78624	154	137	114	175	169	9.74%
Harper	78631	35	35	31	25	27	-22.86%
Stonewall	78671	3	2	4	6	2	-33.33%
Willow City	78675	1	0	0	1	2	100.00%
Total		196	178	151	209	202	3.06%
% of Grand Total		0.67%	0.60%	0.48%	0.65%	0.55%	

¹ These numbers do not represent total enrollment for the county due to zip codes that span more than one county.

NOTES: Headcount based on zip code data as reported and entered in the ACC database. Zip code regions are based on definitions developed by ACC administration.

Source: Spring 12th Class Day Data

**Headcount by Region and Zip Code (continued)
Spring 2005 - 2009**

Region	Zip Code	Spring 2005	Spring 2006	Spring 2007	Spring 2008	Spring 2009	05-09 % chg
Gonzales County							
Leesville	78122	1	1	1	2	3	200.00%
Nixon	78140	3	6	11	12	18	500.00%
Smiley	78159	2	2	3	5	1	-50.00%
Cost	78614	4	1	2	5	3	-25.00%
Gonzales	78629	17	23	16	10	6	-64.71%
Ottine	78658	4	1	0	0	0	-100.00%
Waelder	78959	4	0	0	0	2	-50.00%
Total		35	34	33	34	33	-5.71%
% of Grand Total		0.12%	0.11%	0.11%	0.11%	0.09%	
Hays County¹							
Buda	78610	179	192	190	253	292	63.13%
Driftwood	78619	20	19	18	29	29	45.00%
Dripping Springs	78620	153	144	132	151	184	20.26%
Kyle	78640	220	275	281	389	434	97.27%
San Marcos	78666	580	554	552	649	709	22.24%
San Marcos	78667	20	18	21	8	11	-45.00%
Wimberley	78676	105	122	94	166	125	19.05%
Austin	78737	150	149	146	163	204	36.00%
Total		1,427	1,473	1,434	1,808	1,988	39.31%
% of Grand Total		4.86%	4.93%	4.60%	5.59%	5.43%	
Manor/East Travis County							
Manor	78653	192	233	238	307	390	103.13%
Austin	78724	223	204	193	240	289	29.60%
Austin	78725	76	90	102	121	139	82.89%
Total		491	527	533	668	818	66.60%
% of Grand Total		1.67%	1.77%	1.71%	2.06%	2.23%	
Pflugerville/Northeast Travis County							
Pflugerville	78660	653	690	681	811	1,028	57.43%
Austin	78753	890	923	837	1,000	1,128	26.74%
Austin	78754	227	248	276	316	382	68.28%
Total		1,770	1,861	1,794	2,127	2,538	43.39%
% of Grand Total		6.03%	6.23%	5.76%	6.57%	6.93%	

¹ These numbers do not represent total enrollment for the county due to zip codes that span more than one county.

NOTES: Headcount based on zip code data as reported and entered in the ACC database. Zip code regions are based on definitions developed by ACC administration.

Source: Spring 12th Class Day Data

Headcount by Region and Zip Code (continued) Spring 2005 - 2009

Region	Zip Code	Spring 2005	Spring 2006	Spring 2007	Spring 2008	Spring 2009	05-09 % chg
Round Rock							
Round Rock	78664	738	838	885	926	1,174	59.08%
Round Rock	78665	0	0	0	75	472	.
Round Rock	78681	522	527	499	591	894	71.26%
Austin	78717	213	286	287	370	465	118.31%
Austin	78729	439	440	439	546	707	61.05%
Total		1,912	2,091	2,110	2,508	3,712	94.14%
% of Grand Total		6.51%	7.00%	6.77%	7.75%	10.14%	
Taylor/Hutto/East Williamson County							
Taylor	76574	41	36	22	33	34	-17.07%
Thrall	76578	2	2	1	3	0	-100.00%
Coupland	78615	6	3	5	6	10	66.67%
Hutto	78634	94	100	126	168	196	108.51%
Total		143	141	154	210	240	67.83%
% of Grand Total		0.49%	0.47%	0.49%	0.65%	0.66%	
West Travis County							
Leander	78645	107	125	100	138	125	16.82%
Spicewood	78669	62	55	58	64	69	11.29%
Austin	78732	90	92	111	124	157	74.44%
Austin	78733	71	79	89	69	86	21.13%
Austin	78734	186	165	164	184	217	16.67%
Austin	78738	96	89	91	132	147	53.13%
Total		612	605	613	711	801	30.88%
% of Grand Total		2.09%	2.03%	1.97%	2.20%	2.19%	
Other/Unknown							
		1,344	1,433	4,173	1,166	1,068	-20.54%
Total		1,344	1,433	4,173	1,166	1,068	-20.54%
% of Grand Total		4.58%	4.80%	13.40%	3.60%	2.92%	
GRAND TOTAL		29,350	29,852	31,148	32,369	36,601	24.71%

NOTES: Headcount based on zip code data as reported and entered in the ACC database. Zip code regions are based on definitions developed by ACC administration.

Source: Spring 12th Class Day Data

Headcount by Zip Code Spring 2005 - 2009

Zip Code	Region	Spring 2005	Spring 2006	Spring 2007	Spring 2008	Spring 2009	05-09 %chg
76527 Florence	Georgetown/North Williamson County	12	8	10	15	15	25.00%
76530 Granger	Georgetown/North Williamson County	3	6	10	10	13	333.33%
76537 Jarrell	Georgetown/North Williamson County	21	32	39	44	58	176.19%
76574 Taylor	Taylor/Hutto/East Williamson County	41	36	22	33	34	-17.07%
76578 Thrall	Taylor/Hutto/East Williamson County	2	2	1	3	0	-100.00%
78122 Leesville	Gonzales County	1	1	1	2	3	200.00%
78140 Nixon	Gonzales County	3	6	11	12	18	500.00%
78159 Smiley	Gonzales County	2	2	3	5	1	-50.00%
78602 Bastrop	Bastrop County ¹	142	168	183	212	217	52.82%
78605 Bertram	Burnet County ¹	12	9	16	12	13	8.33%
78606 Blanco	Blanco County ¹	29	33	36	32	32	10.34%
78608 Briggs	Burnet County ¹	0	0	1	1	1	.
78610 Buda	Hays County ¹	179	192	190	253	292	63.13%
78611 Burnet	Burnet County ¹	28	24	24	20	17	-39.29%
78612 Cedar Creek	Bastrop County ¹	84	74	84	107	121	44.05%
78613 Cedar Park	Cedar Park/Leander	1,241	1,352	1,142	1,561	1,733	39.65%
78614 Cost	Gonzales County	4	1	2	5	3	-25.00%
78615 Coupland	Taylor/Hutto/East Williamson County	6	3	5	6	10	66.67%
78616 Dale	Caldwell County ¹	32	46	56	64	68	112.50%
78617 Del Valle	Austin/Travis County, Southeast	173	213	213	246	293	69.36%
78618 Doss	Gillespie County ¹	3	4	2	2	2	-33.33%
78619 Driftwood	Hays County ¹	20	19	18	29	29	45.00%
78620 Dripping Springs	Hays County ¹	153	144	132	151	184	20.26%
78621 Elgin	Bastrop County ¹	135	143	140	165	218	61.48%
78624 Fredericksburg	Gillespie County ¹	154	137	114	175	169	9.74%
78626 Georgetown	Georgetown/North Williamson County	159	170	177	252	261	64.15%
78628 Georgetown	Georgetown/North Williamson County	311	331	329	375	358	15.11%
78629 Gonzales	Gonzales County	17	23	16	10	6	-64.71%
78631 Harper	Gillespie County ¹	35	35	31	25	27	-22.86%
78633 Gergetown	Georgetown/North Williamson County	0	0	0	21	89	.
78634 Hutto	Taylor/Hutto/East Williamson County	94	100	126	168	196	108.51%
78635 Hye	Blanco County ¹	2	1	0	0	2	0.00%
78636 Johnson City	Blanco County ¹	33	33	30	36	26	-21.21%
78640 Kyle	Hays County ¹	220	275	281	389	434	97.27%
78641 Leander	Cedar Park/Leander	801	799	698	930	1,114	39.08%
78642 Liberty Hill	Cedar Park/Leander	75	105	105	145	145	93.33%
78644 Lockhart	Caldwell County ¹	152	172	185	206	240	57.89%
78645 Leander	West Travis County	107	125	100	138	125	16.82%

¹ These numbers do not represent total enrollment for the county due to zip codes that span more than one county.

NOTES: Headcount based on zip code data as reported and entered in the ACC database. Zip code regions are based on definitions developed by ACC administration.

Source: Spring 12th Class Day Data

Headcount by Zip Code (continued)
Spring 2005 - 2009

Zip Code	Region	Spring 2005	Spring 2006	Spring 2007	Spring 2008	Spring 2009	05-09 %chg
78648 Luling	Caldwell County ¹	42	58	30	38	60	42.86%
78650 McDade	Bastrop County ¹	11	9	10	8	7	-36.36%
78652 Manchaca	Austin/Travis County, South	91	85	93	89	94	3.30%
78653 Manor	Manor/East Travis County	192	233	238	307	390	103.13%
78654 Marble Falls	Burnet County ¹	36	33	26	36	29	-19.44%
78655 Martindale	Caldwell County ¹	30	15	18	16	20	-33.33%
78656 Maxwell	Caldwell County ¹	23	27	18	23	22	-4.35%
78658 Ottine	Gonzales County	4	1	0	0	0	-100.00%
78659 Paige	Bastrop County ¹	9	16	21	18	14	55.56%
78660 Pflugerville	Pflugerville/Northeast Travis County	653	690	681	811	1,028	57.43%
78662 Red Rock	Bastrop County ¹	13	22	23	29	27	107.69%
78663 Round Mountain	Blanco County ¹	5	9	8	8	8	60.00%
78664 Round Rock	Round Rock	738	838	885	926	1,174	59.08%
78665 Round Rock	Round Rock	0	0	0	75	472	.
78667 San Marcos	Hays County ¹	20	18	21	8	11	-45.00%
78666 San Marcos	Hays County ¹	580	554	552	649	709	22.24%
78669 Spicewood	West Travis County	62	55	58	64	69	11.29%
78671 Stonewall	Gillespie County ¹	3	2	4	6	2	-33.33%
78675 Willow City	Gillespie County ¹	1	0	0	1	2	100.00%
78676 Wimberley	Hays County ¹	105	122	94	166	125	19.05%
78681 Round Rock	Round Rock	522	527	499	591	894	71.26%
78701 Austin	Austin/Travis County, Central	128	130	123	109	131	2.34%
78702 Austin	Austin/Travis County, East	429	424	395	461	589	37.30%
78703 Austin	Austin/Travis County, Central	362	367	355	331	357	-1.38%
78704 Austin	Austin/Travis County, South	1,283	1,198	1,087	1,114	1,247	-2.81%
78705 Austin	Austin/Travis County, Central	1,046	941	905	936	1,109	6.02%
78712 Austin	Austin/Travis County, Central	1	0	0	2	0	-100.00%
78717 Austin	Round Rock	213	286	287	370	465	118.31%
78719 Austin	Austin/Travis County, Southeast	28	27	24	24	33	17.86%
78721 Austin	Austin/Travis County, East	189	190	146	216	268	41.80%
78722 Austin	Austin/Travis County, East	190	163	152	188	168	-11.58%
78723 Austin	Austin/Travis County, East	600	517	451	485	585	-2.50%
78724 Austin	Manor/East Travis County	223	204	193	240	289	29.60%
78725 Austin	Manor/East Travis County	76	90	102	121	139	82.89%
78726 Austin	Austin/Travis County, Northwest	272	306	254	294	310	13.97%
78727 Austin	Austin/Travis County, North	613	652	632	760	803	31.00%
78728 Austin	Austin/Travis County, North	297	332	312	340	412	38.72%
78729 Austin	Round Rock	439	440	439	546	707	61.05%
78730 Austin	Austin/Travis County, Northwest	102	100	99	97	98	-3.92%
78731 Austin	Austin/Travis County, Northwest	531	498	457	501	509	-4.14%
78732 Austin	West Travis County	90	92	111	124	157	74.44%

¹ These numbers do not represent total enrollment for the county due to zip codes that span more than one county.

NOTES: Headcount based on zip code data as reported and entered in the ACC database. Zip code regions are based on definitions developed by ACC administration.

Source: Spring 12th Class Day Data

Headcount by Zip Code (continued)
Spring 2005 - 2009

Zip Code	Region	Spring 2005	Spring 2006	Spring 2007	Spring 2008	Spring 2009	05-09 %chg
78733 Austin	West Travis County	71	79	89	69	86	21.13%
78734 Austin	West Travis County	186	165	164	184	217	16.67%
78735 Austin	Austin/Travis County, Southwest	269	238	223	253	301	11.90%
78736 Austin	Austin/Travis County, Southwest	203	192	171	223	223	9.85%
78737 Austin	Hays County ¹	150	149	146	163	204	36.00%
78738 Austin	West Travis County	96	89	91	132	147	53.13%
78739 Austin	Austin/Travis County, Southwest	241	269	251	302	338	40.25%
78741 Austin	Austin/Travis County, Southeast	1,738	1,990	1,874	1,969	2,024	16.46%
78742 Austin	Austin/Travis County, Southeast	11	16	14	24	19	72.73%
78744 Austin	Austin/Travis County, Southeast	738	740	762	813	966	30.89%
78745 Austin	Austin/Travis County, South	1,617	1,591	1,530	1,702	1,728	6.86%
78746 Austin	Austin/Travis County, Southwest	295	315	283	315	345	16.95%
78747 Austin	Austin/Travis County, Southeast	195	193	210	292	365	87.18%
78748 Austin	Austin/Travis County, South	991	981	953	1,132	1,271	28.25%
78749 Austin	Austin/Travis County, Southwest	1,037	955	910	967	1,052	1.45%
78750 Austin	Austin/Travis County, Northwest	350	400	376	451	585	67.14%
78751 Austin	Austin/Travis County, Central	505	479	451	502	489	-3.17%
78752 Austin	Austin/Travis County, Central	347	303	297	347	353	1.73%
78753 Austin	Pflugerville/Northeast Travis County	890	923	837	1,000	1,128	26.74%
78754 Austin	Pflugerville/Northeast Travis County	227	248	276	316	382	68.28%
78756 Austin	Austin/Travis County, Central	192	188	179	162	199	3.65%
78757 Austin	Austin/Travis County, Central	555	541	483	501	497	-10.45%
78758 Austin	Austin/Travis County, North	1,373	1,333	1,202	1,425	1,446	5.32%
78759 Austin	Austin/Travis County, Northwest	938	905	816	901	1,019	8.64%
78953 Rosanky	Bastrop County ¹	8	7	6	7	6	-25.00%
78957 Smithville	Bastrop County ¹	41	35	45	63	41	0.00%
78959 Waelder	Gonzales County	4	0	0	0	2	-50.00%
	Other/Unknown	1,344	1,433	4,173	1,166	1,068	-20.54%
	GRAND TOTAL	29,350	29,852	31,148	32,369	36,601	24.71%

¹ These numbers do not represent total enrollment for the county due to zip codes that span more than one county.

NOTES: Headcount based on zip code data as reported and entered in the ACC database. Zip code regions are based on definitions developed by ACC administration.

Source: Spring 12th Class Day Data

**Student Characteristics
Developmental Education - Reading
Spring 2007 - 2009**

	Spring 2007	Spring 2008	Spring 2009	07-09 % Chg
Student Headcount	686	678	922	34.40%
Residency				
In-District	469 68.37%	476 70.21%	716 77.66%	52.67%
Out-of-District	190 27.70%	177 26.11%	180 19.52%	-5.26%
Out-of-State/International	17 2.48%	19 2.80%	21 2.28%	23.53%
Other/Unknown ¹	10 1.46%	6 0.88%	5 0.54%	-50.00%
Gender				
Male	263 38.34%	278 41.00%	355 38.50%	34.98%
Female	423 61.66%	400 59.00%	567 61.50%	34.04%
Student Status				
Part-time	645 94.02%	641 94.54%	864 93.71%	33.95%
Full-time ²	41 5.98%	37 5.46%	58 6.29%	41.46%
Ethnicity				
White	188 27.41%	192 28.32%	254 27.55%	35.11%
Black	132 19.24%	165 24.34%	227 24.62%	71.97%
Hispanic	290 42.27%	271 39.97%	382 41.43%	31.72%
Asian/Pacific Islander	33 4.81%	36 5.31%	28 3.04%	-15.15%
Am. Indian/Alaskan Native	1 0.15%	4 0.59%	8 0.87%	700.00%
Non-Resident Alien	17 2.48%	5 0.74%	4 0.43%	-76.47%
Other/Unknown	25 3.64%	5 0.74%	19 2.06%	-24.00%
Age				
16 and Under	1 0.15%	2 0.29%	2 0.22%	100.00%
17	9 1.31%	7 1.03%	11 1.19%	22.22%
18	143 20.85%	144 21.24%	161 17.46%	12.59%
19-21	300 43.73%	295 43.51%	404 43.82%	34.67%
22-24	79 11.52%	84 12.39%	104 11.28%	31.65%
25-30	68 9.91%	63 9.29%	121 13.12%	77.94%
31-35	35 5.10%	25 3.69%	46 4.99%	31.43%
36-50	42 6.12%	49 7.23%	59 6.40%	40.48%
51-64	8 1.17%	8 1.18%	13 1.41%	62.50%
65 and Over	1 0.15%	1 0.15%	1 0.11%	0.00%
Unknown	0 0.00%	0 0.00%	0 0.00%	.
Average Age	22.79	22.98	23.28	2.15%

¹ Other includes students with tuition exemptions and waivers.

² Full-time - 12 credit hours or more.

NOTE: Unduplicated headcount of students who were enrolled in at least one Developmental Reading course.

Source: Spring 12th Class Day Data

**Student Characteristics
Developmental Education - Writing
Spring 2007 - 2009**

	Spring 2007		Spring 2008		Spring 2009		07-09 % Chg
Student Headcount	529		542		742		40.26%
Residency							
In-District	376	71.08%	381	70.30%	587	79.11%	56.12%
Out-of-District	135	25.52%	147	27.12%	143	19.27%	5.93%
Out-of-State/International	12	2.27%	11	2.03%	10	1.35%	-16.67%
Other/Unknown ¹	6	1.13%	3	0.55%	2	0.27%	-66.67%
Gender							
Male	252	47.64%	272	50.18%	364	49.06%	44.44%
Female	277	52.36%	270	49.82%	378	50.94%	36.46%
Student Status							
Part-time	472	89.22%	498	91.88%	683	92.05%	44.70%
Full-time ²	57	10.78%	44	8.12%	59	7.95%	3.51%
Ethnicity							
White	149	28.17%	147	27.12%	234	31.54%	57.05%
Black	103	19.47%	129	23.80%	177	23.85%	71.84%
Hispanic	223	42.16%	210	38.75%	288	38.81%	29.15%
Asian/Pacific Islander	19	3.59%	32	5.90%	22	2.96%	15.79%
Am. Indian/Alaskan Native	1	0.19%	6	1.11%	7	0.94%	600.00%
Non-Resident Alien	14	2.65%	10	1.85%	2	0.27%	-85.71%
Other/Unknown	20	3.78%	8	1.48%	12	1.62%	-40.00%
Age							
16 and Under	0	0.00%	1	0.18%	1	0.13%	.
17	5	0.95%	3	0.55%	5	0.67%	0.00%
18	86	16.26%	96	17.71%	128	17.25%	48.84%
19-21	211	39.89%	233	42.99%	294	39.62%	39.34%
22-24	76	14.37%	59	10.89%	74	9.97%	-2.63%
25-30	60	11.34%	64	11.81%	98	13.21%	63.33%
31-35	33	6.24%	35	6.46%	41	5.53%	24.24%
36-50	52	9.83%	41	7.56%	83	11.19%	59.62%
51-64	5	0.95%	10	1.85%	17	2.29%	240.00%
65 and Over	1	0.19%	0	0.00%	1	0.13%	0.00%
Unknown	0	0.00%	0	0.00%	0	0.00%	.
Average Age	24.06	.	23.75	.	24.60	.	2.24%

¹ Other includes students with tuition exemptions and waivers.

² Full-time - 12 credit hours or more.

NOTE: Unduplicated headcount of students who were enrolled in at least one Developmental Writing course.

Source: Spring 12th Class Day Data

**Student Characteristics
Developmental Education - Math
Spring 2007 - 2009**

	Spring 2007		Spring 2008		Spring 2009		07-09 % Chg
Student Headcount	5,959		5,801		6,574		10.32%
Residency							
In-District	4,247	71.27%	4,050	69.82%	5,128	78.00%	20.74%
Out-of-District	1,515	25.42%	1,600	27.58%	1,281	19.49%	-15.45%
Out-of-State/International	165	2.77%	116	2.00%	125	1.90%	-24.24%
Other/Unknown ¹	32	0.54%	35	0.60%	40	0.61%	25.00%
Gender							
Male	2,455	41.20%	2,319	39.98%	2,728	41.50%	11.12%
Female	3,504	58.80%	3,482	60.02%	3,846	58.50%	9.76%
Student Status							
Part-time	4,141	69.49%	4,091	70.52%	4,718	71.77%	13.93%
Full-time ²	1,818	30.51%	1,710	29.48%	1,856	28.23%	2.09%
Ethnicity							
White	2,944	49.40%	2,851	49.15%	3,230	49.13%	9.71%
Black	725	12.17%	745	12.84%	892	13.57%	23.03%
Hispanic	1,913	32.10%	1,857	32.01%	2,075	31.56%	8.47%
Asian/Pacific Islander	142	2.38%	180	3.10%	170	2.59%	19.72%
Am. Indian/Alaskan Native	64	1.07%	57	0.98%	68	1.03%	6.25%
Non-Resident Alien	77	1.29%	46	0.79%	43	0.65%	-44.16%
Other/Unknown	94	1.58%	65	1.12%	96	1.46%	2.13%
Age							
16 and Under	9	0.15%	5	0.09%	8	0.12%	-11.11%
17	59	0.99%	47	0.81%	58	0.88%	-1.69%
18	689	11.56%	697	12.02%	754	11.47%	9.43%
19-21	2,169	36.40%	2,159	37.22%	2,321	35.31%	7.01%
22-24	958	16.08%	898	15.48%	1,022	15.55%	6.68%
25-30	1,055	17.70%	999	17.22%	1,148	17.46%	8.82%
31-35	439	7.37%	391	6.74%	524	7.97%	19.36%
36-50	515	8.64%	532	9.17%	630	9.58%	22.33%
51-64	65	1.09%	69	1.19%	105	1.60%	61.54%
65 and Over	1	0.02%	4	0.07%	4	0.06%	300.00%
Unknown	0	0.00%	0	0.00%	0	0.00%	.
Average Age	24.53	.	24.56	.	24.98	.	1.83%

¹ Other includes students with tuition exemptions and waivers.

² Full-time - 12 credit hours or more.

NOTE: Unduplicated headcount of students who were enrolled in at least one Developmental Math course.

Source: Spring 12th Class Day Data

**Student Characteristics
Developmental Education - Other¹
Spring 2007 - 2009**

	Spring 2007	Spring 2008	Spring 2009	07-09 % Chg
Student Headcount	777	900	930	19.69%
Residency				
In-District	554 71.30%	629 69.89%	737 79.25%	33.03%
Out-of-District	197 25.35%	227 25.22%	171 18.39%	-13.20%
Out-of-State/International	16 2.06%	25 2.78%	15 1.61%	-6.25%
Other/Unknown ²	10 1.29%	19 2.11%	7 0.75%	-30.00%
Gender				
Male	310 39.90%	373 41.44%	442 47.53%	42.58%
Female	467 60.10%	527 58.56%	488 52.47%	4.50%
Student Status				
Part-time	617 79.41%	707 78.56%	756 81.29%	22.53%
Full-time ³	160 20.59%	193 21.44%	174 18.71%	8.75%
Ethnicity				
White	303 39.00%	336 37.33%	366 39.35%	20.79%
Black	123 15.83%	182 20.22%	199 21.40%	61.79%
Hispanic	281 36.16%	312 34.67%	322 34.62%	14.59%
Asian/Pacific Islander	30 3.86%	51 5.67%	18 1.94%	-40.00%
Am. Indian/Alaskan Native	3 0.39%	4 0.44%	6 0.65%	100.00%
Non-Resident Alien	12 1.54%	7 0.78%	6 0.65%	-50.00%
Other/Unknown	25 3.22%	8 0.89%	13 1.40%	-48.00%
Age				
16 and Under	2 0.26%	22 2.44%	20 2.15%	900.00%
17	15 1.93%	10 1.11%	12 1.29%	-20.00%
18	130 16.73%	139 15.44%	126 13.55%	-3.08%
19-21	328 42.21%	403 44.78%	360 38.71%	9.76%
22-24	108 13.90%	122 13.56%	116 12.47%	7.41%
25-30	78 10.04%	101 11.22%	145 15.59%	85.90%
31-35	47 6.05%	34 3.78%	56 6.02%	19.15%
36-50	59 7.59%	61 6.78%	80 8.60%	35.59%
51-64	10 1.29%	8 0.89%	14 1.51%	40.00%
65 and Over	0 0.00%	0 0.00%	1 0.11%	.
Unknown	0 0.00%	0 0.00%	0 0.00%	.
Average Age	23.37	22.88	24.17	3.42%

¹ Other includes human developmental and study skills.

² Other includes students with tuition exemptions and waivers.

³ Full-time - 12 credit hours or more.

NOTE: Unduplicated headcount of students who were enrolled in at least one Developmental Other¹ course.

Source: Spring 12th Class Day Data