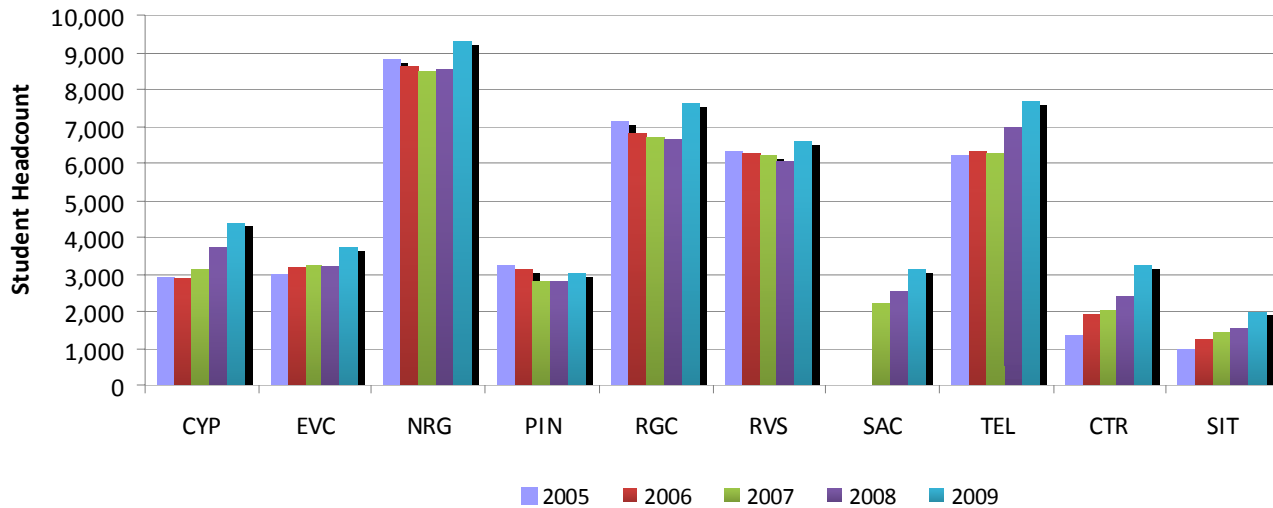


Student Headcount by Location Spring 2009

Location	Spring 2005	Spring 2006	Spring 2007	Spring 2008	Spring 2009
Cypress Creek	2,932	2,904	3,155	3,703	4,401
Eastview	2,977	3,169	3,233	3,230	3,740
Northridge	8,799	8,595	8,506	8,557	9,272
Pinnacle	3,241	3,147	2,785	2,792	3,051
Rio Grande	7,148	6,836	6,709	6,671	7,616
Riverside	6,305	6,270	6,194	6,056	6,584
South Austin¹	.	.	2,215	2,544	3,152
Telecommunicated Instruction Centers	6,196	6,320	6,268	6,981	7,657
Site-Based Instruction	996	1,233	1,444	1,551	2,014



¹ The South Austin Campus opened in Fall 2006

NOTE: Students who attend multiple locations are counted once at each location.

Source: Spring 12th Class Day Data

**Student Headcount
Cypress Creek Campus
Spring 2005 - 2009**

	Spring 2005	Spring 2006	Spring 2007	Spring 2008	Spring 2009	05-09 % chg
Student Headcount	2,932	2,904	3,155	3,703	4,401	50.10%
Credit Hours	17,108	17,040	18,727	22,390	25,408	48.52%
Average Credit Hours	5.83	5.87	5.94	6.05	5.77	-1.06%
Contact Hours	306,616	309,336	338,664	417,440	474,632	54.80%
Average Contact Hours	104.58	106.52	107.34	112.73	107.85	3.13%
Full-time Student Equivalent (FTSE)¹	1,141	1,136	1,248	1,493	1,694	48.52%
Residency						
In-District	1,892 64.53%	2,103 72.42%	2,241 71.03%	2,546 68.76%	3,743 85.05%	97.83%
Out-of-District	958 32.67%	705 24.28%	832 26.37%	1,056 28.52%	561 12.75%	-41.44%
Out-of-State/International	66 2.25%	76 2.62%	65 2.06%	76 2.05%	63 1.43%	-4.55%
Other ²	16 0.55%	20 0.69%	17 0.54%	25 0.68%	34 0.77%	112.50%
Gender						
Male	1,153 39.32%	1,217 41.91%	1,275 40.41%	1,479 39.94%	1,807 41.06%	56.72%
Female	1,779 60.68%	1,687 58.09%	1,880 59.59%	2,224 60.06%	2,594 58.94%	45.81%
Status						
Part-time	2,007 68.45%	1,980 68.18%	2,142 67.89%	2,516 67.94%	3,097 70.37%	54.31%
Full-time ³	925 31.55%	924 31.82%	1,013 32.11%	1,187 32.06%	1,304 29.63%	40.97%
Ethnicity						
White	2,042 69.65%	1,983 68.29%	2,120 67.19%	2,399 64.79%	2,868 65.17%	40.45%
Black	164 5.59%	150 5.17%	190 6.02%	226 6.10%	246 5.59%	50.00%
Hispanic	483 16.47%	504 17.36%	576 18.26%	677 18.28%	841 19.11%	74.12%
Asian/Pacific Islander	136 4.64%	142 4.89%	145 4.60%	259 6.99%	291 6.61%	113.97%
Am. Indian/Alaskan Native	27 0.92%	39 1.34%	28 0.89%	32 0.86%	39 0.89%	44.44%
Non-Resident Alien	40 1.36%	48 1.65%	49 1.55%	49 1.32%	50 1.14%	25.00%
Other/Unknown	40 1.36%	38 1.31%	47 1.49%	61 1.65%	66 1.50%	65.00%
Age						
16 and Under	28 0.95%	37 1.27%	48 1.52%	48 1.30%	58 1.32%	107.14%
17	90 3.07%	112 3.86%	112 3.55%	128 3.46%	140 3.18%	55.56%
18	309 10.54%	300 10.33%	370 11.73%	426 11.50%	449 10.20%	45.31%
19-21	998 34.04%	1,006 34.64%	1,057 33.50%	1,231 33.24%	1,447 32.88%	44.99%
22-24	403 13.74%	451 15.53%	450 14.26%	516 13.93%	644 14.63%	59.80%
25-30	485 16.54%	436 15.01%	488 15.47%	593 16.01%	754 17.13%	55.46%
31-35	232 7.91%	242 8.33%	254 8.05%	263 7.10%	337 7.66%	45.26%
36-50	352 12.01%	286 9.85%	327 10.36%	430 11.61%	502 11.41%	42.61%
51-64	32 1.09%	32 1.10%	45 1.43%	60 1.62%	63 1.43%	96.88%
65 and Over	3 0.10%	2 0.07%	4 0.13%	8 0.22%	7 0.16%	133.33%
Average Age	25.20	24.67	24.83	25.15	25.23	0.12%

¹ Full-time Student Equivalent (FTSE) is based on 15 SCH.

² Other includes students with tuition exemptions and waivers.

³ Full-time - 12 credit hours or more.

NOTES: Students who attend multiple locations are counted once at each location. Percents may not add to 100 due to rounding.

Source: Spring 12th Class Day Data

**Student Headcount
Eastview Campus
Spring 2005 - 2009**

	Spring 2005	Spring 2006	Spring 2007	Spring 2008	Spring 2009	05-09 % chg
Student Headcount	2,977	3,169	3,233	3,230	3,740	25.63%
Credit Hours	16,304	17,922	18,359	18,030	20,250	24.20%
Average Credit Hours	5.48	5.66	5.68	5.58	5.41	-1.14%
Contact Hours	422,888	460,448	467,952	460,368	512,206	21.12%
Average Contact Hours	142.05	145.30	144.74	142.53	136.95	-3.59%
Full-time Student Equivalent (FTSE)¹	1,087	1,195	1,224	1,202	1,350	24.20%
Residency						
In-District	2,352 79.01%	2,526 79.71%	2,535 78.41%	2,575 79.72%	3,126 83.58%	32.91%
Out-of-District	558 18.74%	564 17.80%	620 19.18%	583 18.05%	497 13.29%	-10.93%
Out-of-State/International	35 1.18%	47 1.48%	43 1.33%	31 0.96%	49 1.31%	40.00%
Other ²	32 1.07%	32 1.01%	35 1.08%	41 1.27%	68 1.82%	112.50%
Gender						
Male	902 30.30%	912 28.78%	1,038 32.11%	980 30.34%	1,178 31.50%	30.60%
Female	2,075 69.70%	2,257 71.22%	2,195 67.89%	2,250 69.66%	2,562 68.50%	23.47%
Status						
Part-time	2,195 73.73%	2,251 71.03%	2,356 72.87%	2,410 74.61%	2,796 74.76%	27.38%
Full-time ³	782 26.27%	918 28.97%	877 27.13%	820 25.39%	944 25.24%	20.72%
Ethnicity						
White	1,286 43.20%	1,383 43.64%	1,451 44.88%	1,441 44.61%	1,585 42.38%	23.25%
Black	549 18.44%	586 18.49%	569 17.60%	555 17.18%	713 19.06%	29.87%
Hispanic	853 28.65%	882 27.83%	915 28.30%	943 29.20%	1,080 28.88%	26.61%
Asian/Pacific Islander	137 4.60%	156 4.92%	134 4.14%	151 4.67%	202 5.40%	47.45%
Am. Indian/Alaskan Native	21 0.71%	17 0.54%	24 0.74%	17 0.53%	26 0.70%	23.81%
Non-Resident Alien	77 2.59%	91 2.87%	87 2.69%	67 2.07%	71 1.90%	-7.79%
Other/Unknown	54 1.81%	54 1.70%	53 1.64%	56 1.73%	63 1.68%	16.67%
Age						
16 and Under	4 0.13%	1 0.03%	5 0.15%	3 0.09%	1 0.03%	-75.00%
17	12 0.40%	20 0.63%	13 0.40%	20 0.62%	16 0.43%	33.33%
18	113 3.80%	134 4.23%	152 4.70%	150 4.64%	190 5.08%	68.14%
19-21	659 22.14%	772 24.36%	761 23.54%	743 23.00%	875 23.40%	32.78%
22-24	530 17.80%	509 16.06%	556 17.20%	555 17.18%	612 16.36%	15.47%
25-30	704 23.65%	736 23.22%	744 23.01%	741 22.94%	924 24.71%	31.25%
31-35	380 12.76%	359 11.33%	387 11.97%	363 11.24%	385 10.29%	1.32%
36-50	511 17.16%	547 17.26%	527 16.30%	546 16.90%	597 15.96%	16.83%
51-64	60 2.02%	88 2.78%	85 2.63%	106 3.28%	136 3.64%	126.67%
65 and Over	4 0.13%	3 0.09%	3 0.09%	3 0.09%	4 0.11%	0.00%
Average Age	28.30	28.24	28.07	28.35	28.26	-0.14%

¹ Full-time Student Equivalent (FTSE) is based on 15 SCH.
² Other includes students with tuition exemptions and waivers.
³ Full-time - 12 credit hours or more.

NOTES: Students who attend multiple locations are counted once at each location. Percents may not add to 100 due to rounding.

Source: Spring 12th Class Day Data

Student Headcount Northridge Campus Spring 2005 - 2009

	Spring 2005	Spring 2006	Spring 2007	Spring 2008	Spring 2009	05-09 % chg
Student Headcount	8,799	8,595	8,506	8,557	9,272	5.38%
Credit Hours	55,322	54,855	53,919	54,472	57,868	4.60%
Average Credit Hours	6.29	6.38	6.34	6.37	6.24	-0.73%
Contact Hours	1,072,720	1,059,904	1,044,904	1,067,504	1,138,720	6.15%
Average Contact Hours	121.91	123.32	122.84	124.75	122.81	0.74%
Full-time Student Equivalent (FTSE)¹	3,688	3,657	3,595	3,631	3,858	4.60%
Residency						
In-District	5,833 66.29%	6,177 71.87%	5,981 70.32%	6,039 70.57%	7,599 81.96%	30.28%
Out-of-District	2,649 30.11%	2,097 24.40%	2,208 25.96%	2,261 26.42%	1,379 14.87%	-47.94%
Out-of-State/International	173 1.97%	201 2.34%	199 2.34%	141 1.65%	143 1.54%	-17.34%
Other ²	144 1.64%	120 1.40%	118 1.39%	116 1.36%	151 1.63%	4.86%
Gender						
Male	4,226 48.03%	4,093 47.62%	4,077 47.93%	4,166 48.69%	4,539 48.95%	7.41%
Female	4,573 51.97%	4,502 52.38%	4,429 52.07%	4,391 51.31%	4,733 51.05%	3.50%
Status						
Part-time	6,035 68.59%	5,855 68.12%	5,769 67.82%	5,754 67.24%	6,346 68.44%	5.15%
Full-time ³	2,764 31.41%	2,740 31.88%	2,737 32.18%	2,803 32.76%	2,926 31.56%	5.86%
Ethnicity						
White	5,106 58.03%	4,952 57.61%	4,834 56.83%	4,819 56.32%	5,098 54.98%	-0.16%
Black	756 8.59%	755 8.78%	776 9.12%	757 8.85%	951 10.26%	25.79%
Hispanic	1,845 20.97%	1,836 21.36%	1,816 21.35%	1,880 21.97%	2,062 22.24%	11.76%
Asian/Pacific Islander	612 6.96%	596 6.93%	651 7.65%	744 8.69%	827 8.92%	35.13%
Am. Indian/Alaskan Native	75 0.85%	74 0.86%	78 0.92%	74 0.86%	81 0.87%	8.00%
Non-Resident Alien	266 3.02%	256 2.98%	216 2.54%	166 1.94%	134 1.45%	-49.62%
Other/Unknown	139 1.58%	126 1.47%	135 1.59%	117 1.37%	119 1.28%	-14.39%
Age						
16 and Under	58 0.66%	50 0.58%	65 0.76%	62 0.72%	67 0.72%	15.52%
17	166 1.89%	152 1.77%	146 1.72%	142 1.66%	184 1.98%	10.84%
18	608 6.91%	631 7.34%	646 7.59%	681 7.96%	665 7.17%	9.38%
19-21	2,685 30.51%	2,551 29.68%	2,581 30.34%	2,687 31.40%	2,889 31.16%	7.60%
22-24	1,645 18.70%	1,621 18.86%	1,519 17.86%	1,548 18.09%	1,665 17.96%	1.22%
25-30	1,814 20.62%	1,811 21.07%	1,796 21.11%	1,727 20.18%	1,869 20.16%	3.03%
31-35	741 8.42%	684 7.96%	674 7.92%	638 7.46%	741 7.99%	0.00%
36-50	894 10.16%	908 10.56%	889 10.45%	880 10.28%	944 10.18%	5.59%
51-64	164 1.86%	167 1.94%	168 1.98%	167 1.95%	220 2.37%	34.15%
65 and Over	24 0.27%	20 0.23%	22 0.26%	25 0.29%	28 0.30%	16.67%
Average Age	25.80	25.87	25.79	25.65	25.87	0.27%

¹ Full-time Student Equivalent (FTSE) is based on 15 SCH.

² Other includes students with tuition exemptions and waivers.

³ Full-time - 12 credit hours or more.

NOTES: Students who attend multiple locations are counted once at each location. Percents may not add to 100 due to rounding.

Source: Spring 12th Class Day Data

**Student Headcount
Pinnacle Campus
Spring 2005 - 2009**

	Spring 2005	Spring 2006	Spring 2007	Spring 2008	Spring 2009	05-09 % chg
Student Headcount	3,241	3,147	2,785	2,792	3,051	-5.86%
Credit Hours	19,847	19,435	16,563	16,705	18,077	-8.92%
Average Credit Hours	6.12	6.18	5.95	5.98	5.92	-3.25%
Contact Hours	365,472	357,672	304,000	302,720	327,776	-10.31%
Average Contact Hours	112.77	113.65	109.16	108.42	107.43	-4.73%
Full-time Student Equivalent (FTSE)¹	1,323	1,296	1,104	1,114	1,205	-8.92%
Residency						
In-District	2,397 73.96%	2,443 77.63%	2,107 75.66%	2,128 76.22%	2,274 74.53%	-5.13%
Out-of-District	766 23.63%	625 19.86%	596 21.40%	608 21.78%	711 23.30%	-7.18%
Out-of-State/International	50 1.54%	66 2.10%	68 2.44%	37 1.33%	45 1.47%	-10.00%
Other ²	28 0.86%	13 0.41%	14 0.50%	19 0.68%	21 0.69%	-25.00%
Gender						
Male	1,437 44.34%	1,392 44.23%	1,259 45.21%	1,265 45.31%	1,403 45.98%	-2.37%
Female	1,804 55.66%	1,755 55.77%	1,526 54.79%	1,527 54.69%	1,648 54.02%	-8.65%
Status						
Part-time	2,149 66.31%	2,099 66.70%	1,860 66.79%	1,817 65.08%	2,019 66.18%	-6.05%
Full-time ³	1,092 33.69%	1,048 33.30%	925 33.21%	975 34.92%	1,032 33.82%	-5.49%
Ethnicity						
White	2,186 67.45%	2,078 66.03%	1,830 65.71%	1,873 67.08%	2,020 66.21%	-7.59%
Black	81 2.50%	102 3.24%	111 3.99%	92 3.30%	113 3.70%	39.51%
Hispanic	721 22.25%	736 23.39%	649 23.30%	623 22.31%	719 23.57%	-0.28%
Asian/Pacific Islander	107 3.30%	97 3.08%	88 3.16%	106 3.80%	116 3.80%	8.41%
Am. Indian/Alaskan Native	32 0.99%	30 0.95%	25 0.90%	24 0.86%	21 0.69%	-34.38%
Non-Resident Alien	49 1.51%	53 1.68%	43 1.54%	34 1.22%	25 0.82%	-48.98%
Other/Unknown	65 2.01%	51 1.62%	39 1.40%	40 1.43%	37 1.21%	-43.08%
Age						
16 and Under	24 0.74%	28 0.89%	47 1.69%	42 1.50%	38 1.25%	58.33%
17	102 3.15%	88 2.80%	88 3.16%	114 4.08%	94 3.08%	-7.84%
18	357 11.02%	313 9.95%	290 10.41%	306 10.96%	359 11.77%	0.56%
19-21	1,223 37.74%	1,181 37.53%	1,018 36.55%	1,108 39.68%	1,132 37.10%	-7.44%
22-24	558 17.22%	582 18.49%	520 18.67%	446 15.97%	512 16.78%	-8.24%
25-30	487 15.03%	465 14.78%	432 15.51%	425 15.22%	490 16.06%	0.62%
31-35	180 5.55%	196 6.23%	152 5.46%	126 4.51%	169 5.54%	-6.11%
36-50	263 8.11%	244 7.75%	181 6.50%	185 6.63%	206 6.75%	-21.67%
51-64	41 1.27%	46 1.46%	52 1.87%	38 1.36%	47 1.54%	14.63%
65 and Over	6 0.19%	4 0.13%	5 0.18%	2 0.07%	4 0.13%	-33.33%
Average Age	24.10	24.20	24.04	23.58	23.90	-0.83%

¹ Full-time Student Equivalent (FTSE) is based on 15 SCH.
² Other includes students with tuition exemptions and waivers.
³ Full-time - 12 credit hours or more.

NOTES: Students who attend multiple locations are counted once at each location. Percents may not add to 100 due to rounding.

Source: Spring 12th Class Day Data

**Student Headcount
Rio Grande Campus
Spring 2005 - 2009**

	Spring 2005	Spring 2006	Spring 2007	Spring 2008	Spring 2009	05-09 % chg
Student Headcount	7,148	6,836	6,709	6,671	7,616	6.55%
Credit Hours	43,664	42,241	41,212	41,108	47,088	7.84%
Average Credit Hours	6.11	6.18	6.14	6.16	6.18	1.21%
Contact Hours	827,584	801,256	786,784	781,272	885,440	6.99%
Average Contact Hours	115.78	117.21	117.27	117.11	116.26	0.42%
Full-time Student Equivalent (FTSE)¹	2,911	2,816	2,747	2,741	3,139	7.84%
Residency						
In-District	5,729 80.15%	5,604 81.98%	5,427 80.89%	5,440 81.55%	6,395 83.97%	11.63%
Out-of-District	1,079 15.10%	923 13.50%	954 14.22%	920 13.79%	865 11.36%	-19.83%
Out-of-State/International	163 2.28%	153 2.24%	178 2.65%	139 2.08%	161 2.11%	-1.23%
Other ²	177 2.48%	156 2.28%	150 2.24%	172 2.58%	195 2.56%	10.17%
Gender						
Male	3,238 45.30%	3,098 45.32%	3,092 46.09%	3,145 47.14%	3,633 47.70%	12.20%
Female	3,910 54.70%	3,738 54.68%	3,617 53.91%	3,526 52.86%	3,983 52.30%	1.87%
Status						
Part-time	4,633 64.82%	4,408 64.48%	4,357 64.94%	4,247 63.66%	4,949 64.98%	6.82%
Full-time ³	2,515 35.18%	2,428 35.52%	2,352 35.06%	2,424 36.34%	2,667 35.02%	6.04%
Ethnicity						
White	4,452 62.28%	4,179 61.13%	4,129 61.54%	4,113 61.65%	4,642 60.95%	4.27%
Black	415 5.81%	407 5.95%	410 6.11%	404 6.06%	511 6.71%	23.13%
Hispanic	1,480 20.71%	1,503 21.99%	1,439 21.45%	1,401 21.00%	1,666 21.88%	12.57%
Asian/Pacific Islander	350 4.90%	359 5.25%	404 6.02%	435 6.52%	483 6.34%	38.00%
Am. Indian/Alaskan Native	67 0.94%	52 0.76%	62 0.92%	77 1.15%	76 1.00%	13.43%
Non-Resident Alien	259 3.62%	225 3.29%	178 2.65%	153 2.29%	129 1.69%	-50.19%
Other/Unknown	125 1.75%	111 1.62%	87 1.30%	88 1.32%	109 1.43%	-12.80%
Age						
16 and Under	30 0.42%	28 0.41%	31 0.46%	34 0.51%	25 0.33%	-16.67%
17	90 1.26%	74 1.08%	99 1.48%	92 1.38%	118 1.55%	31.11%
18	392 5.48%	411 6.01%	399 5.95%	389 5.83%	436 5.72%	11.22%
19-21	2,425 33.93%	2,272 33.24%	2,319 34.57%	2,358 35.35%	2,500 32.83%	3.09%
22-24	1,487 20.80%	1,436 21.01%	1,288 19.20%	1,294 19.40%	1,499 19.68%	0.81%
25-30	1,433 20.05%	1,372 20.07%	1,337 19.93%	1,358 20.36%	1,571 20.63%	9.63%
31-35	539 7.54%	486 7.11%	506 7.54%	462 6.93%	568 7.46%	5.38%
36-50	594 8.31%	610 8.92%	594 8.85%	535 8.02%	704 9.24%	18.52%
51-64	147 2.06%	129 1.89%	118 1.76%	136 2.04%	180 2.36%	22.45%
65 and Over	11 0.15%	18 0.26%	18 0.27%	13 0.19%	15 0.20%	36.36%
Average Age	25.40	25.48	25.39	25.21	25.68	1.10%

¹ Full-time Student Equivalent (FTSE) is based on 15 SCH.
² Other includes students with tuition exemptions and waivers.
³ Full-time - 12 credit hours or more.

NOTES: Students who attend multiple locations are counted once at each location. Percents may not add to 100 due to rounding.

Source: Spring 12th Class Day Data

**Student Headcount
Riverside Campus
Spring 2005 - 2009**

	Spring 2005	Spring 2006	Spring 2007	Spring 2008	Spring 2009	05-09 % chg
Student Headcount	6,305	6,270	6,194	6,056	6,584	4.43%
Credit Hours	38,528	39,108	38,752	36,704	40,050	3.95%
Average Credit Hours	6.11	6.24	6.26	6.06	6.08	-0.45%
Contact Hours	751,928	761,376	757,984	722,560	787,376	4.71%
Average Contact Hours	119.26	121.43	122.37	119.31	119.59	0.28%
Full-time Student Equivalent (FTSE)¹	2,569	2,607	2,583	2,447	2,670	3.95%
Residency						
In-District	4,868 77.21%	4,964 79.17%	4,785 77.25%	4,722 77.97%	5,219 79.27%	7.21%
Out-of-District	1,219 19.33%	1,091 17.40%	1,185 19.13%	1,174 19.39%	1,147 17.42%	-5.91%
Out-of-State/International	101 1.60%	114 1.82%	122 1.97%	71 1.17%	100 1.52%	-0.99%
Other ²	117 1.86%	101 1.61%	102 1.65%	89 1.47%	118 1.79%	0.85%
Gender						
Male	2,934 46.53%	2,940 46.89%	3,076 49.66%	2,960 48.88%	3,364 51.09%	14.66%
Female	3,371 53.47%	3,330 53.11%	3,118 50.34%	3,096 51.12%	3,220 48.91%	-4.48%
Status						
Part-time	4,232 67.12%	4,186 66.76%	4,063 65.60%	3,991 65.90%	4,408 66.95%	4.16%
Full-time ³	2,073 32.88%	2,084 33.24%	2,131 34.40%	2,065 34.10%	2,176 33.05%	4.97%
Ethnicity						
White	3,227 51.18%	3,165 50.48%	3,026 48.85%	2,927 48.33%	3,106 47.17%	-3.75%
Black	558 8.85%	606 9.67%	587 9.48%	544 8.98%	639 9.71%	14.52%
Hispanic	1,926 30.55%	1,923 30.67%	2,038 32.90%	2,015 33.27%	2,235 33.95%	16.04%
Asian/Pacific Islander	270 4.28%	246 3.92%	248 4.00%	296 4.89%	337 5.12%	24.81%
Am. Indian/Alaskan Native	45 0.71%	48 0.77%	45 0.73%	64 1.06%	66 1.00%	46.67%
Non-Resident Alien	167 2.65%	170 2.71%	160 2.58%	109 1.80%	102 1.55%	-38.92%
Other/Unknown	112 1.78%	112 1.79%	90 1.45%	101 1.67%	99 1.50%	-11.61%
Age						
16 and Under	18 0.29%	13 0.21%	15 0.24%	17 0.28%	27 0.41%	50.00%
17	70 1.11%	79 1.26%	79 1.28%	71 1.17%	53 0.80%	-24.29%
18	411 6.52%	435 6.94%	467 7.54%	434 7.17%	483 7.34%	17.52%
19-21	2,163 34.31%	2,256 35.98%	2,253 36.37%	2,221 36.67%	2,300 34.93%	6.33%
22-24	1,230 19.51%	1,176 18.76%	1,175 18.97%	1,137 18.77%	1,196 18.17%	-2.76%
25-30	1,141 18.10%	1,124 17.93%	1,072 17.31%	1,039 17.16%	1,198 18.20%	5.00%
31-35	486 7.71%	422 6.73%	404 6.52%	425 7.02%	475 7.21%	-2.26%
36-50	629 9.98%	630 10.05%	571 9.22%	558 9.21%	653 9.92%	3.82%
51-64	143 2.27%	122 1.95%	141 2.28%	139 2.30%	176 2.67%	23.08%
65 and Over	14 0.22%	13 0.21%	17 0.27%	15 0.25%	23 0.35%	64.29%
Average Age	25.70	25.43	25.29	25.36	25.76	0.23%

¹ Full-time Student Equivalent (FTSE) is based on 15 SCH.
² Other includes students with tuition exemptions and waivers.
³ Full-time - 12 credit hours or more.

NOTES: Students who attend multiple locations are counted once at each location. Percents may not add to 100 due to rounding.

Source: Spring 12th Class Day Data

**Student Headcount
South Austin Campus¹
Spring 2007 - 2009**

	Spring 2007	Spring 2008	Spring 2009	07-09 % chg
Student Headcount	2,215	2,544	3,152	42.30%
Credit Hours	11,203	12,768	15,616	39.39%
Average Credit Hours	5.06	5.02	4.95	-2.05%
Contact Hours	212,608	241,032	293,624	38.11%
Average Contact Hours	95.99	94.75	93.15	-2.95%
Full-time Student Equivalent (FTSE)²	747	851	1,041	39.39%
Residency				
In-District	1,783 80.50%	2,045 80.39%	2,560 81.22%	43.58%
Out-of-District	382 17.25%	443 17.41%	519 16.47%	35.86%
Out-of-State/International	36 1.63%	32 1.26%	41 1.30%	13.89%
Other ³	14 0.63%	24 0.94%	32 1.02%	128.57%
Gender				
Male	933 42.12%	1,087 42.73%	1,336 42.39%	43.19%
Female	1,282 57.88%	1,457 57.27%	1,816 57.61%	41.65%
Status				
Part-time	1,493 67.40%	1,774 69.73%	2,247 71.29%	50.50%
Full-time ⁴	722 32.60%	770 30.27%	905 28.71%	25.35%
Ethnicity				
White	1,136 51.29%	1,297 50.98%	1,594 50.57%	40.32%
Black	118 5.33%	164 6.45%	212 6.73%	79.66%
Hispanic	774 34.94%	892 35.06%	1,105 35.06%	42.76%
Asian/Pacific Islander	84 3.79%	97 3.81%	130 4.12%	54.76%
Am. Indian/Alaskan Native	23 1.04%	33 1.30%	24 0.76%	4.35%
Non-Resident Alien	43 1.94%	27 1.06%	40 1.27%	-6.98%
Other/Unknown	37 1.67%	34 1.34%	47 1.49%	27.03%
Age				
16 and Under	11 0.50%	39 1.53%	27 0.86%	145.45%
17	38 1.72%	50 1.97%	70 2.22%	84.21%
18	182 8.22%	199 7.82%	281 8.91%	54.40%
19-21	779 35.17%	892 35.06%	1,001 31.76%	28.50%
22-24	400 18.06%	454 17.85%	569 18.05%	42.25%
25-30	405 18.28%	449 17.65%	607 19.26%	49.88%
31-35	145 6.55%	169 6.64%	259 8.22%	78.62%
36-50	209 9.44%	239 9.39%	270 8.57%	29.19%
51-64	43 1.94%	49 1.93%	63 2.00%	46.51%
65 and Over	3 0.14%	4 0.16%	5 0.16%	66.67%
Average Age	25.13	25.02	25.27	0.56%

¹ The South Austin Campus opened Fall 2006.

² Full-time Student Equivalent (FTSE) is based on 15 SCH.

³ Other includes students with tuition exemptions and waivers.

⁴ Full-time - 12 credit hours or more.

NOTES: Students who attend multiple locations are counted once at each location. Percents may not add to 100 due to rounding.

Source: Spring 12th Class Day Data

Student Headcount Telecommunicated Instruction¹ Spring 2005 - 2009

	Spring 2005	Spring 2006	Spring 2007	Spring 2008	Spring 2009	05-09 % chg
Student Headcount	6,196	6,320	6,268	6,981	7,657	23.58%
Credit Hours	28,388	28,820	29,191	32,891	35,831	26.22%
Average Credit Hours	4.58	4.56	4.66	4.71	4.68	2.14%
Contact Hours	498,288	503,200	517,880	594,000	629,760	26.38%
Average Contact Hours	80.42	79.62	82.62	85.09	82.25	2.27%
Full-time Student Equivalent (FTSE)²	1,893	1,921	1,946	2,193	2,389	26.22%
Residency						
In-District	4,356 70.30%	4,606 72.88%	4,470 71.31%	4,979 71.32%	6,053 79.05%	38.96%
Out-of-District	1,634 26.37%	1,533 24.26%	1,629 25.99%	1,829 26.20%	1,429 18.66%	-12.55%
Out-of-State/International	114 1.84%	112 1.77%	95 1.52%	88 1.26%	98 1.28%	-14.04%
Other ³	92 1.48%	69 1.09%	74 1.18%	85 1.22%	77 1.01%	-16.30%
Gender						
Male	2,112 34.09%	2,209 34.95%	2,128 33.95%	2,332 33.40%	2,709 35.38%	28.27%
Female	4,084 65.91%	4,111 65.05%	4,140 66.05%	4,649 66.60%	4,948 64.62%	21.16%
Status						
Part-time	4,370 70.53%	4,444 70.32%	4,525 72.19%	4,996 71.57%	5,515 72.03%	26.20%
Full-time ⁴	1,826 29.47%	1,876 29.68%	1,743 27.81%	1,985 28.43%	2,142 27.97%	17.31%
Ethnicity						
White	3,994 64.46%	4,051 64.10%	3,968 63.31%	4,449 63.73%	4,760 62.17%	19.18%
Black	469 7.57%	523 8.28%	524 8.36%	589 8.44%	690 9.01%	47.12%
Hispanic	1,115 18.00%	1,150 18.20%	1,201 19.16%	1,327 19.01%	1,535 20.05%	37.67%
Asian/Pacific Islander	318 5.13%	327 5.17%	321 5.12%	370 5.30%	420 5.49%	32.08%
Am. Indian/Alaskan Native	67 1.08%	52 0.82%	62 0.99%	57 0.82%	77 1.01%	14.93%
Non-Resident Alien	146 2.36%	128 2.03%	119 1.90%	115 1.65%	89 1.16%	-39.04%
Other/Unknown	87 1.40%	89 1.41%	73 1.16%	74 1.06%	86 1.12%	-1.15%
Age						
16 and Under	36 0.58%	38 0.60%	48 0.77%	64 0.92%	93 1.21%	158.33%
17	121 1.95%	133 2.10%	124 1.98%	140 2.01%	173 2.26%	42.98%
18	213 3.44%	243 3.84%	196 3.13%	266 3.81%	274 3.58%	28.64%
19-21	1,605 25.90%	1,618 25.60%	1,487 23.72%	1,607 23.02%	1,715 22.40%	6.85%
22-24	1,188 19.17%	1,172 18.54%	1,164 18.57%	1,267 18.15%	1,402 18.31%	18.01%
25-30	1,402 22.63%	1,427 22.58%	1,501 23.95%	1,677 24.02%	1,794 23.43%	27.96%
31-35	708 11.43%	691 10.93%	702 11.20%	810 11.60%	908 11.86%	28.25%
36-50	793 12.80%	863 13.66%	920 14.68%	1,001 14.34%	1,111 14.51%	40.10%
51-64	124 2.00%	130 2.06%	119 1.90%	141 2.02%	183 2.39%	47.58%
65 and Over	6 0.10%	5 0.08%	7 0.11%	8 0.11%	4 0.05%	-33.33%
Average Age	27.00	27.07	27.39	27.38	27.50	1.85%

¹ Telecommunicated instruction includes courses offered in the following formats: Instructional Television, Personal Computer with Modem, Print-Based using a textbook, and Directed Learning. Prior to Fall 2006, Telecommunicated instruction also included courses offered in Interactive Video Class format.

² Full-time Student Equivalent (FTSE) is based on 15 SCH.

³ Other includes students with tuition exemptions and waivers.

⁴ Full-time - 12 credit hours or more.

NOTES: Students who attend multiple locations are counted once at each location. Percents may not add to 100 due to rounding

Source: Spring 12th Class Day Data

**Student Headcount
Site-Based¹ Summary
Spring 2005 - 2009**

	Spring 2005	Spring 2006	Spring 2007	Spring 2008	Spring 2009	05-09 % chg
Student Headcount	996	1,233	1,444	1,551	2,014	102.21%
Credit Hours	3,511	4,485	4,964	5,780	8,227	134.32%
Average Credit Hours	3.53	3.64	3.44	3.73	4.08	15.88%
Contact Hours	75,584	94,280	100,144	120,992	185,456	145.36%
Average Contact Hours	75.89	76.46	69.35	78.01	92.08	21.34%
Full-time Student Equivalent (FTSE)²	234	299	331	385	548	134.32%
Residency						
In-District	543 54.52%	684 55.47%	882 61.08%	882 56.87%	1,293 64.20%	138.12%
Out-of-District	422 42.37%	516 41.85%	546 37.81%	651 41.97%	696 34.56%	64.93%
Out-of-State/International	24 2.41%	24 1.95%	8 0.55%	10 0.64%	11 0.55%	-54.17%
Other ²	7 0.70%	9 0.73%	8 0.55%	8 0.52%	14 0.70%	100.00%
Gender						
Male	445 44.68%	569 46.15%	610 42.24%	703 45.33%	891 44.24%	100.22%
Female	551 55.32%	664 53.85%	834 57.76%	848 54.67%	1,123 55.76%	103.81%
Status						
Part-time	825 82.83%	1,091 88.48%	1,273 88.16%	1,368 88.20%	1,826 90.67%	121.33%
Full-time ³	171 17.17%	142 11.52%	171 11.84%	183 11.80%	188 9.33%	9.94%
Ethnicity						
White	657 65.96%	838 67.96%	932 64.54%	1,013 65.31%	1,215 60.33%	84.93%
Black	65 6.53%	79 6.41%	110 7.62%	118 7.61%	139 6.90%	113.85%
Hispanic	201 20.18%	244 19.79%	306 21.19%	310 19.99%	466 23.14%	131.84%
Asian/Pacific Islander	33 3.31%	39 3.16%	53 3.67%	56 3.61%	115 5.71%	248.48%
Am. Indian/Alaskan Native	6 0.60%	7 0.57%	11 0.76%	17 1.10%	19 0.94%	216.67%
Non-Resident Alien	16 1.61%	11 0.89%	13 0.90%	17 1.10%	25 1.24%	56.25%
Other/Unknown	18 1.81%	15 1.22%	19 1.32%	20 1.29%	35 1.74%	94.44%
Age						
16 and Under	87 8.73%	126 10.22%	230 15.93%	195 12.57%	350 17.38%	302.30%
17	250 25.10%	295 23.93%	393 27.22%	533 34.36%	638 31.68%	155.20%
18	109 10.94%	193 15.65%	192 13.30%	251 16.18%	306 15.19%	180.73%
19-21	132 13.25%	130 10.54%	145 10.04%	141 9.09%	145 7.20%	9.85%
22-24	102 10.24%	121 9.81%	117 8.10%	104 6.71%	136 6.75%	33.33%
25-30	136 13.65%	158 12.81%	150 10.39%	138 8.90%	182 9.04%	33.82%
31-35	69 6.93%	78 6.33%	75 5.19%	50 3.22%	96 4.77%	39.13%
36-50	80 8.03%	114 9.25%	117 8.10%	102 6.58%	125 6.21%	56.25%
51-64	23 2.31%	17 1.38%	23 1.59%	27 1.74%	31 1.54%	34.78%
65 and Over	8 0.80%	1 0.08%	2 0.14%	10 0.64%	5 0.25%	-37.50%
Average Age	23.90	23.17	22.36	21.77	21.51	-10.00%

¹ Site-based instruction includes various credit and non-credit classes and training offered or provided to businesses, government entities, high schools, correctional institutions, and community groups.

² Full-time Student Equivalent (FTSE) is based on 15 SCH.

³ Other includes students with tuition exemptions and waivers.

⁴ Full-time - 12 credit hours or more.

Source: Spring 12th Class Day Data

**Student Headcount
Centers¹ Summary
Spring 2005 - 2009**

	Spring 2005	Spring 2006	Spring 2007	Spring 2008	Spring 2009	05-09 % chg
Student Headcount²	1,356	1,928	2,057	2,436	3,238	138.79%
Credit Hours	6,093	9,166	10,225	12,046	15,999	162.58%
Average Credit Hours	4.49	4.75	4.97	4.94	4.94	9.96%
Contact Hours	104,528	155,248	175,832	203,912	271,744	159.97%
Average Contact Hours	77.09	80.52	85.48	83.71	83.92	8.87%
Full-time Student Equivalent (FTSE)³	406	611	682	803	1,067	162.58%
Residency						
In-District	278 20.50%	418 21.68%	387 18.81%	492 20.20%	1,398 43.17%	402.88%
Out-of-District	1,061 78.24%	1,477 76.61%	1,638 79.63%	1,917 78.69%	1,793 55.37%	68.99%
Out-of-State/International	16 1.18%	26 1.35%	30 1.46%	21 0.86%	35 1.08%	118.75%
Other ⁴	1 0.07%	7 0.36%	2 0.10%	6 0.25%	12 0.37%	1100.00%
Gender						
Male	482 35.55%	751 38.95%	792 38.50%	940 38.59%	1,280 39.53%	165.56%
Female	874 64.45%	1,177 61.05%	1,265 61.50%	1,496 61.41%	1,958 60.47%	124.03%
Status						
Part-time	1,121 82.67%	1,510 78.32%	1,565 76.08%	1,865 76.56%	2,440 75.36%	117.66%
Full-time ⁵	235 17.33%	418 21.68%	492 23.92%	571 23.44%	798 24.64%	239.57%
Ethnicity						
White	921 67.92%	1,322 68.57%	1,332 64.75%	1,559 64.00%	2,061 63.65%	123.78%
Black	42 3.10%	68 3.53%	112 5.44%	151 6.20%	205 6.33%	388.10%
Hispanic	308 22.71%	438 22.72%	510 24.79%	605 24.84%	777 24.00%	152.27%
Asian/Pacific Islander	14 1.03%	36 1.87%	41 1.99%	49 2.01%	114 3.52%	714.29%
Am. Indian/Alaskan Native	8 0.59%	18 0.93%	26 1.26%	27 1.11%	35 1.08%	337.50%
Non-Resident Alien	5 0.37%	12 0.62%	13 0.63%	13 0.53%	17 0.53%	240.00%
Other/Unknown	58 4.28%	34 1.76%	23 1.12%	32 1.31%	29 0.90%	-50.00%
Age						
16 and Under	93 6.86%	104 5.39%	135 6.56%	162 6.65%	195 6.02%	109.68%
17	247 18.22%	279 14.47%	313 15.22%	421 17.28%	460 14.21%	86.23%
18	190 14.01%	283 14.68%	303 14.73%	366 15.02%	436 13.47%	129.47%
19-21	327 24.12%	523 27.13%	606 29.46%	627 25.74%	870 26.87%	166.06%
22-24	160 11.80%	219 11.36%	223 10.84%	238 9.77%	387 11.95%	141.88%
25-30	133 9.81%	220 11.41%	196 9.53%	249 10.22%	359 11.09%	169.92%
31-35	72 5.31%	92 4.77%	100 4.86%	114 4.68%	201 6.21%	179.17%
36-50	107 7.89%	190 9.85%	157 7.63%	237 9.73%	282 8.71%	163.55%
51-64	27 1.99%	17 0.88%	23 1.12%	21 0.86%	43 1.33%	59.26%
65 and Over	0 0.00%	1 0.05%	1 0.05%	1 0.04%	5 0.15%	.
Average Age	23.00	23.19	22.56	22.90	23.38	1.65%

¹ Centers include non-campus locations that are staffed, have regular posted hours, and offer credit courses every semester.

² Students that attend more than one center are counted only once in the Center Summary; therefore, this total is unduplicated and will not match the sum of all of the centers.

³ Full-time Student Equivalent (FTSE) is based on 15 SCH.

⁴ Other includes students with tuition exemptions and waivers.

⁵ Full-time - 12 credit hours or more.

Source: Spring 12th Class Day Data

Student Headcount Centers¹ by Location Spring 2009

	Bastrop	Fredericksburg	Georgetown	Hays	Leander
Student Headcount	138	312	210	161	137
Credit Hours	561	1,746	929	561	398
Average Credit Hours	4.07	5.60	4.42	3.48	2.91
Contact Hours	8,976	33,088	14,864	9,136	7,280
Average Contact Hours	65.04	106.05	70.78	56.75	53.14
Full-time Student Equivalent (FTSE)²	37	116	62	37	27
Residency					
In-District	16 11.59%	18 5.77%	29 13.81%	27 16.77%	127 92.70%
Out-of-District	119 86.23%	291 93.27%	177 84.29%	132 81.99%	9 6.57%
Out-of-State/International	0 0.00%	3 0.96%	1 0.48%	2 1.24%	1 0.73%
Other ³	3 2.17%	0 0.00%	3 1.43%	0 0.00%	0 0.00%
Gender					
Male	49 35.51%	97 31.09%	76 36.19%	65 40.37%	35 25.55%
Female	89 64.49%	215 68.91%	134 63.81%	96 59.63%	102 74.45%
Ethnicity					
White	91 65.94%	233 74.68%	167 79.52%	107 66.46%	95 69.34%
Black	8 5.80%	2 0.64%	5 2.38%	6 3.73%	8 5.84%
Hispanic	34 24.64%	68 21.79%	28 13.33%	45 27.95%	27 19.71%
Asian/Pacific Islander	2 1.45%	3 0.96%	5 2.38%	1 0.62%	3 2.19%
Am. Indian/Alaskan Native	0 0.00%	4 1.28%	2 0.95%	2 1.24%	1 0.73%
Non-Resident Alien	2 1.45%	0 0.00%	3 1.43%	0 0.00%	0 0.00%
Other/Unknown	1 0.72%	2 0.64%	0 0.00%	0 0.00%	3 2.19%
Age					
16 and Under	14 10.14%	31 9.94%	48 22.86%	10 6.21%	20 14.60%
17	45 32.61%	45 14.42%	73 34.76%	45 27.95%	46 33.58%
18	26 18.84%	34 10.90%	39 18.57%	24 14.91%	22 16.06%
19-21	21 15.22%	65 20.83%	17 8.10%	29 18.01%	10 7.30%
22-24	10 7.25%	33 10.58%	4 1.90%	18 11.18%	10 7.30%
25-30	8 5.80%	38 12.18%	8 3.81%	16 9.94%	9 6.57%
31-35	4 2.90%	19 6.09%	8 3.81%	5 3.11%	5 3.65%
36-50	7 5.07%	39 12.50%	9 4.29%	13 8.07%	14 10.22%
51-64	3 2.17%	8 2.56%	4 1.90%	1 0.62%	1 0.73%
65 and Over	0 0.00%	0 0.00%	0 0.00%	0 0.00%	0 0.00%
Average Age	21.13	24.41	20.07	22.19	21.80

¹ Centers include non-campus locations that are staffed, have regular posted hours, and offer credit courses every semester.

² Full-time Student Equivalent (FTSE) is based on 15 SCH.

³ Other includes students with tuition exemptions and waivers.

NOTES: Students are counted once for each location they attend. Percents may not add to 100 due to rounding.

Source: Spring 12th Class Day Data

**Student Headcount
Centers¹ by Location (continued)
Spring 2009**

	Lockhart	Pflugerville	Round Rock Higher Education Center	San Marcos Center	San Marcos Goodnight
Student Headcount	151	58	1,551	432	271
Credit Hours	684	177	7,725	1,752	1,466
Average Credit Hours	4.53	3.05	4.98	4.06	5.41
Contact Hours	10,944	2,832	131,048	29,720	23,856
Average Contact Hours	72.48	48.83	84.49	68.80	88.03
Full-time Student Equivalent (FTSE)²	46	12	515	117	98
Residency					
In-District	0 0.00%	6 10.34%	1,127 72.66%	42 9.72%	31 11.44%
Out-of-District	151 100.00%	51 87.93%	400 25.79%	383 88.66%	234 86.35%
Out-of-State/International	0 0.00%	1 1.72%	17 1.10%	7 1.62%	6 2.21%
Other ³	0 0.00%	0 0.00%	7 0.45%	0 0.00%	0 0.00%
Gender					
Male	65 43.05%	24 41.38%	596 38.43%	216 50.00%	155 57.20%
Female	86 56.95%	34 58.62%	955 61.57%	216 50.00%	116 42.80%
Ethnicity					
White	92 60.93%	40 68.97%	924 59.57%	253 58.56%	171 63.10%
Black	9 5.96%	7 12.07%	138 8.90%	19 4.40%	9 3.32%
Hispanic	46 30.46%	8 13.79%	349 22.50%	147 34.03%	84 31.00%
Asian/Pacific Islander	2 1.32%	1 1.72%	96 6.19%	3 0.69%	0 0.00%
Am. Indian/Alaskan Native	1 0.66%	1 1.72%	17 1.10%	7 1.62%	2 0.74%
Non-Resident Alien	0 0.00%	0 0.00%	10 0.64%	1 0.23%	1 0.37%
Other/Unknown	1 0.66%	1 1.72%	17 1.10%	2 0.46%	4 1.48%
Age					
16 and Under	29 19.21%	8 13.79%	22 1.42%	12 2.78%	2 0.74%
17	81 53.64%	34 58.62%	54 3.48%	38 8.80%	3 1.11%
18	41 27.15%	13 22.41%	169 10.90%	54 12.50%	43 15.87%
19-21	0 0.00%	0 0.00%	507 32.69%	166 38.43%	144 53.14%
22-24	0 0.00%	0 0.00%	220 14.18%	79 18.29%	43 15.87%
25-30	0 0.00%	3 5.17%	228 14.70%	42 9.72%	24 8.86%
31-35	0 0.00%	0 0.00%	145 9.35%	19 4.40%	5 1.85%
36-50	0 0.00%	0 0.00%	179 11.54%	20 4.63%	5 1.85%
51-64	0 0.00%	0 0.00%	22 1.42%	2 0.46%	2 0.74%
65 and Over	0 0.00%	0 0.00%	5 0.32%	0 0.00%	0 0.00%
Average Age	17.07	17.64	25.35	22.33	21.51

¹ Centers include non-campus locations that are staffed, have regular posted hours, and offer credit courses every semester.

² Full-time Student Equivalent (FTSE) is based on 15 SCH.

³ Other includes students with tuition exemptions and waivers.

NOTES: Students are counted once for each location they attend. Percents may not add to 100 due to rounding.

Source: Spring 12th Class Day Data

THIS PAGE INTENTIONALLY LEFT BLANK