

Campus Demographics

This section can be used for finding:

- student headcount at each location.
- student headcount at each location by gender, ethnicity, and age.

Contents

Useful Terms	102
Summer 2008	
Student Headcount by Location	103
Cypress Creek Campus	104
Eastview Campus	105
Northridge Campus	106
Pinnacle Campus	107
Rio Grande Campus	108
Riverside Campus	109
South Austin Campus	110
Telecommunicated Instruction	111
Site-Based Summary	112
Centers Summary	113
Centers by Location	114
Fall 2008	
Student Headcount by Location	117
Cypress Creek Campus	118
Eastview Campus	120
Northridge Campus	122
Pinnacle Campus	124
Rio Grande Campus	126
Riverside Campus	128
South Austin Campus	130
Telecommunicated Instruction	132
Site-Based Summary	134
Centers Summary	135
Centers by Location	136
Spring 2009	
Student Headcount by Location	139
Cypress Creek Campus	140
Eastview Campus	141
Northridge Campus	142
Pinnacle Campus	143
Rio Grande Campus	144
Riverside Campus	145
South Austin Campus	146
Telecommunicated Instruction	147
Site-Based Summary	148
Centers Summary	149
Centers by Location	150

Useful Terms

4th Class Day Data (Second 5½ week session) – data for all summer classes, as of the 4th day of class of the second 5 1/2 week session. **(Official Reporting Date for the Summer Semester)**

12th Class Day Data - data for all fall or spring classes, as of the 12th day of class of the 16 week session. **(Official Reporting Date for the Fall and Spring Semesters)**

Centers - non-campus locations that are staffed, have regular posted hours, and offer credit courses on a regular basis (every semester).

Headcount - the number of students enrolled in one or more courses. This number may be duplicated or unduplicated.

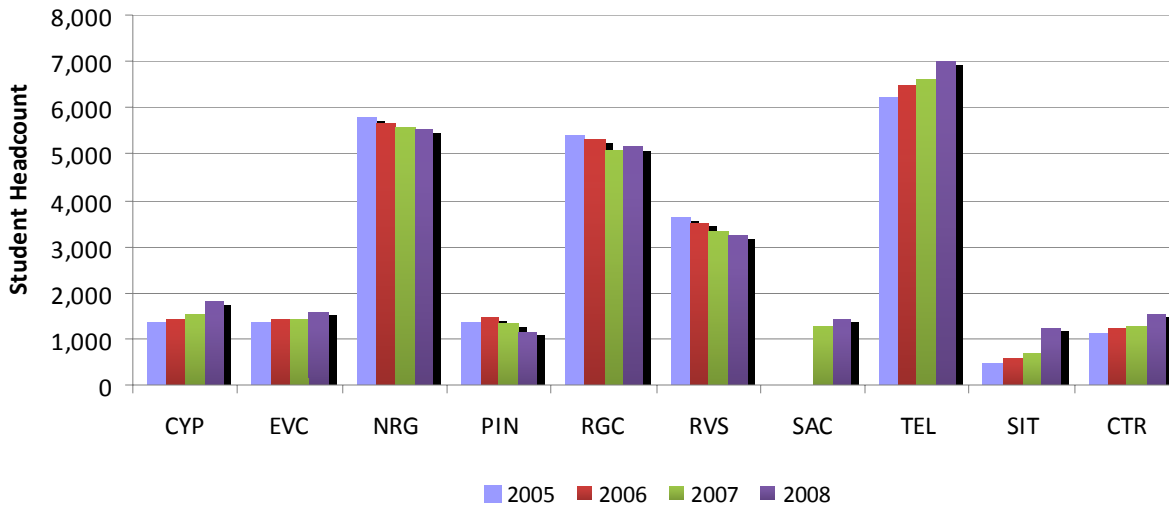
Reporting Dates – Fall/Spring: 12th Class Day
Summer: 4th Class Day of the second 5½ week session

Site-Based Instruction - credit and non-credit classes and training provided to businesses, government entities, high schools, correctional institutions, and community groups.

Telecommunicated Instruction - courses delivered to individuals and groups by synchronous or asynchronous methods. Delivery methods include instructional television (ITV) using recorded video programs shown on cable TV and on cassette, web-based courses (PCM), print-based courses (PRN) using a textbook, directed studies (DIR), with groups of students at several sites, and live televised classes (LTV) to individual students at home or work via the Internet or cable television.

**Student Headcount by Location
Summer 2005 - 2008**

Location	Summer 2005	Summer 2006	Summer 2007	Summer 2008
Cypress Creek	1,335	1,413	1,578	1,813
Eastview	1,332	1,414	1,445	1,597
Northridge	5,785	5,654	5,597	5,530
Pinnacle	1,350	1,456	1,356	1,148
Rio Grande	5,413	5,320	5,110	5,133
Riverside	3,653	3,505	3,325	3,242
South Austin¹	.	.	1,289	1,427
Telecommunicated Instruction	6,240	6,502	6,617	6,984
Site-Based Instruction Centers	463	610	696	1,235



¹ The South Austin Campus opened Fall 2006.

NOTE: Students who attend multiple locations are counted once at each location.

Source: 4th Class Day Data (Second 5½ week session)

Student Headcount Cypress Creek Campus Summer 2005 - 2008

	Summer 2005	Summer 2006	Summer 2007	Summer 2008	05-08 % chg
Student Headcount	1,335	1,413	1,578	1,813	35.81%
Credit Hours	5,227	5,390	6,344	7,428	42.11%
Average Credit Hours	3.92	3.81	4.02	4.10	4.64%
Contact Hours	95,712	99,344	118,480	143,568	50.00%
Average Contact Hours	71.69	70.31	75.08	79.19	10.45%
Residency					
In-District	930 69.66%	1,050 74.31%	1,097 69.52%	1,468 80.97%	57.85%
Out-of-District	382 28.61%	340 24.06%	444 28.14%	310 17.10%	-18.85%
Out-of-State/International	18 1.35%	19 1.34%	31 1.96%	32 1.77%	77.78%
Other ¹	5 0.37%	4 0.28%	6 0.38%	3 0.17%	-40.00%
Gender					
Male	491 36.78%	542 38.36%	614 38.91%	725 39.99%	47.66%
Female	844 63.22%	871 61.64%	964 61.09%	1,088 60.01%	28.91%
Status					
Part-time	620 46.44%	659 46.64%	739 46.83%	826 45.56%	33.23%
Full-time ²	715 53.56%	754 53.36%	839 53.17%	987 54.44%	38.04%
Ethnicity					
White	927 69.44%	937 66.31%	1,041 65.97%	1,174 64.75%	26.65%
Black	84 6.29%	85 6.02%	84 5.32%	127 7.00%	51.19%
Hispanic	193 14.46%	234 16.56%	237 15.02%	299 16.49%	54.92%
Asian/Pacific Islander	80 5.99%	99 7.01%	126 7.98%	149 8.22%	86.25%
Am. Indian/Alaskan Native	12 0.90%	17 1.20%	11 0.70%	11 0.61%	-8.33%
Non-Resident Alien	11 0.82%	20 1.42%	28 1.77%	17 0.94%	54.55%
Other/Unknown	28 2.10%	21 1.49%	51 3.23%	36 1.99%	28.57%
Age					
16 and Under	108 8.09%	139 9.84%	188 11.91%	113 6.23%	4.63%
17	100 7.49%	140 9.91%	151 9.57%	119 6.56%	19.00%
18	95 7.12%	96 6.79%	112 7.10%	150 8.27%	57.89%
19-21	444 33.26%	434 30.71%	482 30.54%	593 32.71%	33.56%
22-24	161 12.06%	170 12.03%	170 10.77%	234 12.91%	45.34%
25-30	182 13.63%	179 12.67%	196 12.42%	253 13.95%	39.01%
31-35	100 7.49%	99 7.01%	107 6.78%	115 6.34%	15.00%
36-50	135 10.11%	136 9.62%	146 9.25%	198 10.92%	46.67%
51-64	10 0.75%	19 1.34%	25 1.58%	34 1.88%	240.00%
65 and Over	0 0.00%	1 0.07%	1 0.06%	4 0.22%	.
Average Age	23.90	24.34	23.61	24.59	2.89%

¹ Other includes students with tuition exemptions and waivers.

² Full-time - 6 credit hours or more.

NOTES: Students who attend multiple locations are counted once at each location. Percents may not add to 100 due to rounding.

Source: 4th Class Day Data (Second 5½ week session)

**Student Headcount
Eastview Campus
Summer 2005 - 2008**

	Summer 2005	Summer 2006	Summer 2007	Summer 2008	05-08 % chg
Student Headcount	1,332	1,414	1,445	1,597	19.89%
Credit Hours	5,620	6,364	6,071	6,686	18.97%
Average Credit Hours	4.22	4.50	4.20	4.19	-0.77%
Contact Hours	164,864	181,552	177,488	193,216	17.20%
Average Contact Hours	123.77	128.40	122.83	120.99	-2.25%
Residency					
In-District	1,072 80.48%	1,139 80.55%	1,151 79.65%	1,312 82.15%	22.39%
Out-of-District	239 17.94%	247 17.47%	264 18.27%	239 14.97%	0.00%
Out-of-State/International	15 1.13%	20 1.41%	11 0.76%	16 1.00%	6.67%
Other ¹	6 0.45%	8 0.57%	19 1.31%	30 1.88%	400.00%
Gender					
Male	378 28.38%	379 26.80%	378 26.16%	398 24.92%	5.29%
Female	954 71.62%	1,035 73.20%	1,067 73.84%	1,199 75.08%	25.68%
Status					
Part-time	475 35.66%	496 35.08%	572 39.58%	655 41.01%	37.89%
Full-time ²	857 64.34%	918 64.92%	873 60.42%	942 58.99%	9.92%
Ethnicity					
White	582 43.69%	584 41.30%	613 42.42%	723 45.27%	24.23%
Black	246 18.47%	290 20.51%	265 18.34%	267 16.72%	8.54%
Hispanic	388 29.13%	400 28.29%	428 29.62%	438 27.43%	12.89%
Asian/Pacific Islander	58 4.35%	67 4.74%	73 5.05%	96 6.01%	65.52%
Am. Indian/Alaskan Native	11 0.83%	9 0.64%	6 0.42%	3 0.19%	-72.73%
Non-Resident Alien	26 1.95%	33 2.33%	39 2.70%	41 2.57%	57.69%
Other/Unknown	21 1.58%	31 2.19%	21 1.45%	29 1.82%	38.10%
Age					
16 and Under	9 0.68%	20 1.41%	14 0.97%	5 0.31%	-44.44%
17	6 0.45%	8 0.57%	14 0.97%	16 1.00%	166.67%
18	32 2.40%	47 3.32%	45 3.11%	29 1.82%	-9.38%
19-21	236 17.72%	270 19.09%	258 17.85%	273 17.09%	15.68%
22-24	257 19.29%	230 16.27%	253 17.51%	253 15.84%	-1.56%
25-30	322 24.17%	345 24.40%	362 25.05%	431 26.99%	33.85%
31-35	178 13.36%	196 13.86%	196 13.56%	231 14.46%	29.78%
36-50	252 18.92%	256 18.10%	246 17.02%	300 18.79%	19.05%
51-64	38 2.85%	41 2.90%	56 3.88%	58 3.63%	52.63%
65 and Over	2 0.15%	1 0.07%	1 0.07%	1 0.06%	-50.00%
Average Age	29.10	28.82	28.91	29.60	1.72%

¹ Other includes students with tuition exemptions and waivers.

² Full-time - 6 credit hours or more.

NOTES: Students who attend multiple locations are counted once at each location. Percents may not add to 100 due to rounding.

Source: 4th Class Day Data (Second 5½ week session)

Student Headcount Northridge Campus Summer 2005 - 2008

	Summer 2005	Summer 2006	Summer 2007	Summer 2008	05-08 % chg
Student Headcount	5,785	5,654	5,597	5,530	-4.41%
Credit Hours	26,072	25,163	24,428	24,464	-6.17%
Average Credit Hours	4.51	4.45	4.36	4.42	-1.84%
Contact Hours	500,744	480,952	466,016	475,792	-4.98%
Average Contact Hours	86.56	85.06	83.26	86.04	-0.60%
Residency					
In-District	4,118 71.18%	3,954 69.93%	3,920 70.04%	4,382 79.24%	6.41%
Out-of-District	1,520 26.27%	1,563 27.64%	1,549 27.68%	1,032 18.66%	-32.11%
Out-of-State/International	88 1.52%	100 1.77%	88 1.57%	66 1.19%	-25.00%
Other ¹	59 1.02%	37 0.65%	40 0.71%	50 0.90%	-15.25%
Gender					
Male	2,570 44.43%	2,556 45.21%	2,629 46.97%	2,566 46.40%	-0.16%
Female	3,215 55.57%	3,098 54.79%	2,968 53.03%	2,964 53.60%	-7.81%
Status					
Part-time	2,571 44.44%	2,486 43.97%	2,512 44.88%	2,498 45.17%	-2.84%
Full-time ²	3,214 55.56%	3,168 56.03%	3,085 55.12%	3,032 54.83%	-5.66%
Ethnicity					
White	3,230 55.83%	3,128 55.32%	3,020 53.96%	2,881 52.10%	-10.80%
Black	538 9.30%	527 9.32%	502 8.97%	554 10.02%	2.97%
Hispanic	1,108 19.15%	1,095 19.37%	1,109 19.81%	1,137 20.56%	2.62%
Asian/Pacific Islander	601 10.39%	636 11.25%	715 12.77%	734 13.27%	22.13%
Am. Indian/Alaskan Native	40 0.69%	39 0.69%	43 0.77%	45 0.81%	12.50%
Non-Resident Alien	167 2.89%	147 2.60%	103 1.84%	86 1.56%	-48.50%
Other/Unknown	101 1.75%	82 1.45%	105 1.88%	93 1.68%	-7.92%
Age					
16 and Under	270 4.67%	281 4.97%	323 5.77%	224 4.05%	-17.04%
17	331 5.72%	332 5.87%	375 6.70%	291 5.26%	-12.08%
18	304 5.25%	323 5.71%	317 5.66%	266 4.81%	-12.50%
19-21	1,885 32.58%	1,811 32.03%	1,729 30.89%	1,881 34.01%	-0.21%
22-24	951 16.44%	929 16.43%	869 15.53%	890 16.09%	-6.41%
25-30	1,021 17.65%	964 17.05%	1,007 17.99%	977 17.67%	-4.31%
31-35	404 6.98%	419 7.41%	375 6.70%	411 7.43%	1.73%
36-50	509 8.80%	496 8.77%	502 8.97%	476 8.61%	-6.48%
51-64	99 1.71%	89 1.57%	87 1.55%	102 1.84%	3.03%
65 and Over	11 0.19%	10 0.18%	13 0.23%	12 0.22%	9.09%
Average Age	24.70	24.65	24.55	24.80	0.40%

¹ Other includes students with tuition exemptions and waivers.

² Full-time - 6 credit hours or more.

NOTES: Students who attend multiple locations are counted once at each location. Percents may not add to 100 due to rounding.

Source: 4th Class Day Data (Second 5½ week session)

**Student Headcount
Pinnacle Campus
Summer 2005 - 2008**

	Summer 2005	Summer 2006	Summer 2007	Summer 2008	05-08 % chg
Student Headcount	1,350	1,456	1,356	1,148	-14.96%
Credit Hours	5,173	5,838	5,286	4,443	-14.11%
Average Credit Hours	3.83	4.01	3.90	3.87	1.00%
Contact Hours	96,736	109,760	98,288	81,504	-15.75%
Average Contact Hours	71.66	75.38	72.48	71.00	-0.92%
Residency					
In-District	1,011 74.89%	1,095 75.21%	976 71.98%	846 73.69%	-16.32%
Out-of-District	319 23.63%	330 22.66%	361 26.62%	291 25.35%	-8.78%
Out-of-State/International	15 1.11%	26 1.79%	16 1.18%	10 0.87%	-33.33%
Other ¹	5 0.37%	5 0.34%	3 0.22%	1 0.09%	-80.00%
Gender					
Male	558 41.33%	618 42.45%	555 40.93%	528 45.99%	-5.38%
Female	792 58.67%	838 57.55%	801 59.07%	620 54.01%	-21.72%
Status					
Part-time	654 48.44%	688 47.25%	678 50.00%	543 47.30%	-16.97%
Full-time ²	696 51.56%	768 52.75%	678 50.00%	605 52.70%	-13.07%
Ethnicity					
White	906 67.11%	949 65.18%	895 66.00%	749 65.24%	-17.33%
Black	38 2.81%	61 4.19%	53 3.91%	57 4.97%	50.00%
Hispanic	290 21.48%	314 21.57%	268 19.76%	231 20.12%	-20.34%
Asian/Pacific Islander	63 4.67%	75 5.15%	88 6.49%	77 6.71%	22.22%
Am. Indian/Alaskan Native	7 0.52%	16 1.10%	10 0.74%	9 0.78%	28.57%
Non-Resident Alien	16 1.19%	22 1.51%	14 1.03%	8 0.70%	-50.00%
Other/Unknown	30 2.22%	19 1.30%	28 2.06%	17 1.48%	-43.33%
Age					
16 and Under	97 7.19%	143 9.82%	135 9.96%	46 4.01%	-52.58%
17	99 7.33%	110 7.55%	127 9.37%	80 6.97%	-19.19%
18	93 6.89%	100 6.87%	97 7.15%	84 7.32%	-9.68%
19-21	510 37.78%	529 36.33%	500 36.87%	473 41.20%	-7.25%
22-24	211 15.63%	228 15.66%	189 13.94%	157 13.68%	-25.59%
25-30	165 12.22%	173 11.88%	179 13.20%	168 14.63%	1.82%
31-35	57 4.22%	86 5.91%	53 3.91%	53 4.62%	-7.02%
36-50	98 7.26%	74 5.08%	54 3.98%	73 6.36%	-25.51%
51-64	19 1.41%	13 0.89%	20 1.47%	11 0.96%	-42.11%
65 and Over	1 0.07%	0 0.00%	2 0.15%	3 0.26%	200.00%
Average Age	23.20	22.58	22.38	23.16	-0.17%

¹ Other includes students with tuition exemptions and waivers.

² Full-time - 6 credit hours or more.

NOTES: Students who attend multiple locations are counted once at each location. Percents may not add to 100 due to rounding.

Source: 4th Class Day Data (Second 5½ week session)

Student Headcount Rio Grande Campus Summer 2005 - 2008

	Summer 2005	Summer 2006	Summer 2007	Summer 2008	05-08 % chg
Student Headcount	5,413	5,320	5,110	5,133	-5.17%
Credit Hours	24,704	24,184	23,482	23,609	-4.43%
Average Credit Hours	4.56	4.55	4.60	4.60	0.78%
Contact Hours	455,384	447,736	436,768	436,000	-4.26%
Average Contact Hours	84.13	84.16	85.47	84.94	0.97%
Residency					
In-District	4,437 81.97%	4,303 80.88%	4,116 80.55%	4,239 82.58%	-4.46%
Out-of-District	751 13.87%	782 14.70%	775 15.17%	680 13.25%	-9.45%
Out-of-State/International	124 2.29%	136 2.56%	104 2.04%	91 1.77%	-26.61%
Other ¹	101 1.87%	99 1.86%	115 2.25%	123 2.40%	21.78%
Gender					
Male	2,337 43.17%	2,287 42.99%	2,232 43.68%	2,276 44.34%	-2.61%
Female	3,076 56.83%	3,033 57.01%	2,878 56.32%	2,857 55.66%	-7.12%
Status					
Part-time	2,369 43.77%	2,394 45.00%	2,261 44.25%	2,268 44.18%	-4.26%
Full-time ²	3,044 56.23%	2,926 55.00%	2,849 55.75%	2,865 55.82%	-5.88%
Ethnicity					
White	3,344 61.78%	3,264 61.35%	3,085 60.37%	3,101 60.41%	-7.27%
Black	302 5.58%	331 6.22%	302 5.91%	317 6.18%	4.97%
Hispanic	1,036 19.14%	1,029 19.34%	973 19.04%	990 19.29%	-4.44%
Asian/Pacific Islander	434 8.02%	419 7.88%	497 9.73%	510 9.94%	17.51%
Am. Indian/Alaskan Native	38 0.70%	38 0.71%	41 0.80%	53 1.03%	39.47%
Non-Resident Alien	166 3.07%	159 2.99%	137 2.68%	105 2.05%	-36.75%
Other/Unknown	93 1.72%	80 1.50%	75 1.47%	57 1.11%	-38.71%
Age					
16 and Under	150 2.77%	188 3.53%	169 3.31%	94 1.83%	-37.33%
17	168 3.10%	180 3.38%	190 3.72%	136 2.65%	-19.05%
18	240 4.43%	229 4.30%	220 4.31%	180 3.51%	-25.00%
19-21	2,260 41.75%	2,174 40.86%	2,172 42.50%	2,272 44.26%	0.53%
22-24	1,071 19.79%	1,017 19.12%	936 18.32%	947 18.45%	-11.58%
25-30	828 15.30%	851 16.00%	793 15.52%	846 16.48%	2.17%
31-35	313 5.78%	275 5.17%	261 5.11%	258 5.03%	-17.57%
36-50	313 5.78%	335 6.30%	296 5.79%	315 6.14%	0.64%
51-64	66 1.22%	67 1.26%	64 1.25%	80 1.56%	21.21%
65 and Over	4 0.07%	4 0.08%	9 0.18%	5 0.10%	25.00%
Average Age	23.80	23.83	23.70	23.99	0.80%

¹ Other includes students with tuition exemptions and waivers.

² Full-time - 6 credit hours or more.

NOTES: Students who attend multiple locations are counted once at each location. Percents may not add to 100 due to rounding.

Source: 4th Class Day Data (Second 5½ week session)

**Student Headcount
Riverside Campus
Summer 2005 - 2008**

	Summer 2005	Summer 2006	Summer 2007	Summer 2008	05-08 % chg
Student Headcount	3,653	3,505	3,325	3,242	-11.25%
Credit Hours	16,051	15,607	14,382	13,847	-13.73%
Average Credit Hours	4.39	4.45	4.33	4.27	-2.79%
Contact Hours	306,632	299,968	282,648	272,656	-11.08%
Average Contact Hours	83.94	85.58	85.01	84.10	0.19%
Residency					
In-District	2,986 81.74%	2,870 81.88%	2,665 80.15%	2,675 82.51%	-10.42%
Out-of-District	576 15.77%	538 15.35%	572 17.20%	492 15.18%	-14.58%
Out-of-State/International	39 1.07%	59 1.68%	40 1.20%	36 1.11%	-7.69%
Other ¹	52 1.42%	38 1.08%	48 1.44%	39 1.20%	-25.00%
Gender					
Male	1,603 43.88%	1,591 45.39%	1,525 45.86%	1,498 46.21%	-6.55%
Female	2,050 56.12%	1,914 54.61%	1,800 54.14%	1,744 53.79%	-14.93%
Status					
Part-time	1,542 42.21%	1,469 41.91%	1,485 44.66%	1,481 45.68%	-3.96%
Full-time ²	2,111 57.79%	2,036 58.09%	1,840 55.34%	1,761 54.32%	-16.58%
Ethnicity					
White	1,806 49.44%	1,682 47.99%	1,575 47.37%	1,459 45.00%	-19.21%
Black	351 9.61%	372 10.61%	357 10.74%	361 11.14%	2.85%
Hispanic	1,075 29.43%	1,077 30.73%	1,041 31.31%	1,063 32.79%	-1.12%
Asian/Pacific Islander	243 6.65%	208 5.93%	207 6.23%	250 7.71%	2.88%
Am. Indian/Alaskan Native	24 0.66%	31 0.88%	17 0.51%	25 0.77%	4.17%
Non-Resident Alien	90 2.46%	90 2.57%	81 2.44%	37 1.14%	-58.89%
Other/Unknown	64 1.75%	45 1.28%	47 1.41%	47 1.45%	-26.56%
Age					
16 and Under	86 2.35%	102 2.91%	113 3.40%	85 2.62%	-1.16%
17	123 3.37%	108 3.08%	115 3.46%	147 4.53%	19.51%
18	171 4.68%	152 4.34%	142 4.27%	96 2.96%	-43.86%
19-21	1,307 35.78%	1,261 35.98%	1,223 36.78%	1,131 34.89%	-13.47%
22-24	709 19.41%	686 19.57%	632 19.01%	561 17.30%	-20.87%
25-30	637 17.44%	572 16.32%	507 15.25%	568 17.52%	-10.83%
31-35	239 6.54%	240 6.85%	199 5.98%	229 7.06%	-4.18%
36-50	317 8.68%	303 8.64%	314 9.44%	322 9.93%	1.58%
51-64	58 1.59%	74 2.11%	73 2.20%	88 2.71%	51.72%
65 and Over	6 0.16%	7 0.20%	7 0.21%	15 0.46%	150.00%
Average Age	24.80	24.98	25.00	25.61	3.27%

¹ Other includes students with tuition exemptions and waivers.

² Full-time - 6 credit hours or more.

NOTES: Students who attend multiple locations are counted once at each location. Percents may not add to 100 due to rounding.

Source: 4th Class Day Data (Second 5½ week session)

**Student Headcount
South Austin Campus¹
Summer 2007 - 2008**

	Summer 2007	Summer 2008	07-08 % chg
Student Headcount	1,289	1,427	10.71%
Credit Hours	5,124	5,724	11.71%
Average Credit Hours	3.98	4.01	0.91%
Contact Hours	97,648	109,328	11.96%
Average Contact Hours	75.75	76.61	1.13%
Residency			
In-District	1,055 81.85%	1,202 84.23%	13.93%
Out-of-District	208 16.14%	199 13.95%	-4.33%
Out-of-State/International	15 1.16%	17 1.19%	13.33%
Other ²	11 0.85%	9 0.63%	-18.18%
Gender			
Male	523 40.6%	550 38.54%	5.16%
Female	766 59.4%	877 61.46%	14.49%
Status			
Part-time	536 41.6%	577 40.43%	7.65%
Full-time ³	753 58.4%	850 59.57%	12.88%
Ethnicity			
White	641 49.7%	682 47.79%	6.40%
Black	87 6.7%	125 8.76%	43.68%
Hispanic	432 33.5%	487 34.13%	12.73%
Asian/Pacific Islander	74 5.7%	95 6.66%	28.38%
Am. Indian/Alaskan Native	7 0.5%	9 0.63%	28.57%
Non-Resident Alien	22 1.7%	13 0.91%	-40.91%
Other/Unknown	26 2.0%	16 1.12%	-38.46%
Age			
16 and Under	110 8.5%	109 7.64%	-0.91%
17	72 5.6%	101 7.08%	40.28%
18	70 5.4%	77 5.40%	10.00%
19-21	382 29.6%	415 29.08%	8.64%
22-24	199 15.4%	245 17.17%	23.12%
25-30	233 18.1%	231 16.19%	-0.86%
31-35	93 7.2%	101 7.08%	8.60%
36-50	108 8.4%	119 8.34%	10.19%
51-64	19 1.5%	25 1.75%	31.58%
65 and Over	3 0.2%	4 0.28%	33.33%
Average Age	24.48	24.36	-0.49%

¹ The South Austin Campus opened Fall 2006.

² Other includes students with tuition exemptions and waivers.

³ Full-time - 6 credit hours or more.

NOTES: Students who attend multiple locations are counted once at each location. Percents may not add to 100 due to rounding.

Source: 4th Class Day Data (Second 5½ week session)

**Student Headcount
Telecommunicated Instruction¹
Summer 2005 - 2008**

	Summer 2005	Summer 2006	Summer 2007	Summer 2008	05-08 % chg
Student Headcount	6,240	6,502	6,617	6,984	11.92%
Credit Hours	27,087	28,080	28,547	29,830	10.13%
Average Credit Hours	4.34	4.32	4.31	4.27	-1.61%
Contact Hours	459,296	469,488	480,864	496,608	8.12%
Average Contact Hours	73.61	72.21	72.67	71.11	-3.39%
Residency					
In-District	4,737 75.91%	4,856 74.68%	4,895 73.98%	5,501 78.77%	16.13%
Out-of-District	1,303 20.88%	1,465 22.53%	1,564 23.64%	1,348 19.30%	3.45%
Out-of-State/International	120 1.92%	124 1.91%	101 1.53%	83 1.19%	-30.83%
Other ²	80 1.28%	57 0.88%	57 0.86%	52 0.74%	-35.00%
Gender					
Male	2,154 34.52%	2,277 35.02%	2,354 35.58%	2,369 33.92%	9.98%
Female	4,086 65.48%	4,225 64.98%	4,263 64.42%	4,615 66.08%	12.95%
Status					
Part-time	2,408 38.59%	2,533 38.96%	2,680 40.50%	2,721 38.96%	13.00%
Full-time ³	3,832 61.41%	3,969 61.04%	3,937 59.50%	4,263 61.04%	11.25%
Ethnicity					
White	4,080 65.38%	4,208 64.72%	4,230 63.93%	4,347 62.24%	6.54%
Black	417 6.68%	438 6.74%	441 6.66%	513 7.35%	23.02%
Hispanic	1,016 16.28%	1,083 16.66%	1,131 17.09%	1,274 18.24%	25.39%
Asian/Pacific Islander	483 7.74%	525 8.07%	578 8.74%	636 9.11%	31.68%
Am. Indian/Alaskan Native	36 0.58%	44 0.68%	49 0.74%	56 0.80%	55.56%
Non-Resident Alien	116 1.86%	134 2.06%	92 1.39%	70 1.00%	-39.66%
Other/Unknown	92 1.47%	70 1.08%	96 1.45%	88 1.26%	-4.35%
Age					
16 and Under	134 2.15%	227 3.49%	223 3.37%	284 4.07%	111.94%
17	152 2.44%	217 3.34%	216 3.26%	256 3.67%	68.42%
18	211 3.38%	218 3.35%	229 3.46%	193 2.76%	-8.53%
19-21	2,300 36.86%	2,377 36.56%	2,503 37.83%	2,560 36.66%	11.30%
22-24	1,123 18.00%	1,147 17.64%	1,079 16.31%	1,080 15.46%	-3.83%
25-30	1,103 17.68%	1,099 16.90%	1,116 16.87%	1,185 16.97%	7.43%
31-35	517 8.29%	510 7.84%	534 8.07%	598 8.56%	15.67%
36-50	609 9.76%	613 9.43%	616 9.31%	713 10.21%	17.08%
51-64	88 1.41%	91 1.40%	97 1.47%	113 1.62%	28.41%
65 and Over	3 0.05%	3 0.05%	4 0.06%	2 0.03%	-33.33%
Average Age	25.20	24.94	24.90	25.19	-0.04%

¹ Telecommunicated instruction includes courses offered in the following formats: Instructional Television, Personal Computer with Modem, Print-Based using a textbook, and Directed Learning. Prior to Fall 2006, Telecommunicated instruction also included courses offered in Interactive Video Class format.

² Other includes students with tuition exemptions and waivers.

³ Full-time - 6 credit hours or more.

NOTES: Students who attend multiple locations are counted once at each location. Percents may not add to 100 due to rounding.

Source: 4th Class Day Data (Second 5½ week session)

Student Headcount Site-Based¹ Summary Summer 2005 - 2008

	Summer 2005	Summer 2006	Summer 2007	Summer 2008	05-08 % chg
Student Headcount	463	610	696	1,235	166.74%
Credit Hours	1,787	2,091	2,572	4,853	171.57%
Average Credit Hours	3.86	3.43	3.70	3.93	1.81%
Contact Hours	34,048	41,312	46,624	86,192	153.15%
Average Contact Hours	73.54	67.72	66.99	69.79	-5.09%
Residency					
In-District	362 78.19%	368 60.33%	413 59.34%	774 62.67%	113.81%
Out-of-District	98 21.17%	238 39.02%	273 39.22%	445 36.03%	354.08%
Out-of-State/International	1 0.22%	4 0.66%	3 0.43%	10 0.81%	900.00%
Other ²	2 0.43%	0 0.00%	7 1.01%	6 0.49%	200.00%
Gender					
Male	208 44.92%	226 37.05%	313 44.97%	510 41.30%	145.19%
Female	255 55.08%	384 62.95%	383 55.03%	725 58.70%	184.31%
Status					
Part-time	214 46.22%	321 52.62%	336 48.28%	624 50.53%	191.59%
Full-time ³	249 53.78%	289 47.38%	360 51.72%	611 49.47%	145.38%
Ethnicity					
White	270 58.32%	392 64.26%	420 60.34%	728 58.95%	169.63%
Black	47 10.15%	37 6.07%	41 5.89%	83 6.72%	76.60%
Hispanic	101 21.81%	115 18.85%	120 17.24%	234 18.95%	131.68%
Asian/Pacific Islander	32 6.91%	58 9.51%	75 10.78%	155 12.55%	384.38%
Am. Indian/Alaskan Native	7 1.51%	1 0.16%	7 1.01%	7 0.57%	0.00%
Non-Resident Alien	3 0.65%	5 0.82%	8 1.15%	9 0.73%	200.00%
Other/Unknown	3 0.65%	2 0.33%	25 3.59%	19 1.54%	533.33%
Age					
16 and Under	136 29.37%	237 38.85%	291 41.81%	543 43.97%	299.26%
17	115 24.84%	188 30.82%	201 28.88%	469 37.98%	307.83%
18	8 1.73%	7 1.15%	6 0.86%	36 2.91%	350.00%
19-21	32 6.91%	36 5.90%	50 7.18%	46 3.72%	43.75%
22-24	29 6.26%	35 5.74%	42 6.03%	37 3.00%	27.59%
25-30	44 9.50%	41 6.72%	50 7.18%	48 3.89%	9.09%
31-35	27 5.83%	25 4.10%	16 2.30%	19 1.54%	-29.63%
36-50	55 11.88%	33 5.41%	29 4.17%	27 2.19%	-50.91%
51-64	14 3.02%	8 1.31%	8 1.15%	9 0.73%	-35.71%
65 and Over	3 0.65%	0 0.00%	3 0.43%	1 0.08%	-66.67%
Average Age	23.60	20.19	19.84	18.37	-22.16%

¹ Site-based instruction includes various credit and non-credit classes and training offered or provided to businesses, government entities, high schools, correctional institutions, and community groups.

² Other includes students with tuition exemptions and waivers.

³ Full-time - 6 credit hours or more.

Source: 4th Class Day Data (Second 5½ week session)

**Student Headcount
Centers¹ Summary
Summer 2005 - 2008**

	Summer 2005	Summer 2006	Summer 2007	Summer 2008	05-08 % chg
Student Headcount²	1,104	1,269	1,296	1,571	42.30%
Credit Hours	4,410	5,061	5,105	6,049	37.17%
Average Credit Hours	3.99	3.99	3.94	3.85	-3.61%
Contact Hours	73,936	83,472	85,888	102,288	38.35%
Average Contact Hours	66.97	65.78	66.27	65.11	-2.78%
Residency					
In-District	226 20.47%	296 23.33%	280 21.60%	544 34.63%	140.71%
Out-of-District	866 78.44%	963 75.89%	1,008 77.78%	1,018 64.80%	17.55%
Out-of-State/International	8 0.72%	8 0.63%	7 0.54%	7 0.45%	-12.50%
Other ³	4 0.36%	2 0.16%	1 0.08%	2 0.13%	-50.00%
Gender					
Male	397 35.96%	461 36.33%	487 37.58%	633 40.29%	59.45%
Female	707 64.04%	808 63.67%	809 62.42%	938 59.71%	32.67%
Status					
Part-time	517 46.83%	597 47.04%	654 50.46%	772 49.14%	49.32%
Full-time ⁴	587 53.17%	672 52.96%	642 49.54%	799 50.86%	36.12%
Ethnicity					
White	741 67.12%	843 66.43%	818 63.12%	1,030 65.56%	39.00%
Black	25 2.26%	67 5.28%	73 5.63%	98 6.24%	292.00%
Hispanic	250 22.64%	268 21.12%	302 23.30%	340 21.64%	36.00%
Asian/Pacific Islander	33 2.99%	37 2.92%	39 3.01%	50 3.18%	51.52%
Am. Indian/Alaskan Native	7 0.63%	12 0.95%	9 0.69%	12 0.76%	71.43%
Non-Resident Alien	5 0.45%	7 0.55%	6 0.46%	12 0.76%	140.00%
Other/Unknown	43 3.89%	35 2.76%	49 3.78%	23 1.46%	-46.51%
Age					
16 and Under	200 18.12%	214 16.86%	242 18.67%	298 18.97%	49.00%
17	206 18.66%	223 17.57%	257 19.83%	320 20.37%	55.34%
18	97 8.79%	111 8.75%	111 8.56%	130 8.27%	34.02%
19-21	360 32.61%	381 30.02%	327 25.23%	408 25.97%	13.33%
22-24	67 6.07%	92 7.25%	108 8.33%	132 8.40%	97.01%
25-30	81 7.34%	87 6.86%	110 8.49%	114 7.26%	40.74%
31-35	31 2.81%	63 4.96%	57 4.40%	66 4.20%	112.90%
36-50	53 4.80%	88 6.93%	64 4.94%	88 5.60%	66.04%
51-64	8 0.72%	9 0.71%	19 1.47%	13 0.83%	62.50%
65 and Over	1 0.09%	1 0.08%	1 0.08%	2 0.13%	100.00%
Average Age	20.80	21.63	21.34	21.20	1.92%

¹ Centers include non-campus locations that are staffed, have regular posted hours, and offer credit courses every semester.

² Students that attend more than one center are counted only once in the Center Summary; therefore, this total is unduplicated and will not match the sum of all of the centers.

³ Other includes students with tuition exemptions and waivers.

⁴ Full-time - 6 credit hours or more.

NOTES: Students are counted once for each location they attend. Percents may not add to 100 due to rounding.

Source: 4th Class Day Data (Second 5½ week session)

Student Headcount Centers¹ by Location Summer 2008

	Bastrop	Fredericksburg	Georgetown	Hays	Leander
Student Headcount	106	322	49	90	138
Credit Hours	429	1,449	234	294	522
Average Credit Hours	4.05	4.50	4.78	3.27	3.78
Contact Hours	6,864	24,896	3,744	4,704	8,880
Average Contact Hours	64.75	77.32	76.41	52.27	64.35
Residency					
In-District	7 6.60%	5 1.55%	14 28.57%	27 30.00%	125 90.58%
Out-of-District	99 93.40%	317 98.45%	35 71.43%	63 70.00%	9 6.52%
Out-of-State/International	0 0.00%	0 0.00%	0 0.00%	0 0.00%	4 2.90%
Other ²	0 0.00%	0 0.00%	0 0.00%	0 0.00%	0 0.00%
Gender					
Male	46 43.40%	117 36.34%	17 34.69%	37 41.11%	57 41.30%
Female	60 56.60%	205 63.66%	32 65.31%	53 58.89%	81 58.70%
Status					
Part-time	42 39.62%	169 52.48%	10 20.41%	60 66.67%	57 41.30%
Full-time ³	64 60.38%	153 47.52%	39 79.59%	30 33.33%	81 58.70%
Ethnicity					
White	68 64.15%	259 80.43%	36 73.47%	49 54.44%	93 67.39%
Black	9 8.49%	2 0.62%	0 0.00%	4 4.44%	12 8.70%
Hispanic	24 22.64%	50 15.53%	11 22.45%	35 38.89%	19 13.77%
Asian/Pacific Islander	2 1.89%	0 0.00%	1 2.04%	1 1.11%	11 7.97%
Am. Indian/Alaskan Native	1 0.94%	3 0.93%	1 2.04%	1 1.11%	0 0.00%
Non-Resident Alien	1 0.94%	0 0.00%	0 0.00%	0 0.00%	0 0.00%
Other/Unknown	1 0.94%	8 2.48%	0 0.00%	0 0.00%	3 2.17%
Age					
16 and Under	46 43.40%	68 21.12%	9 18.37%	34 37.78%	34 24.64%
17	39 36.79%	77 23.91%	24 48.98%	8 8.89%	59 42.75%
18	7 6.60%	28 8.70%	1 2.04%	5 5.56%	14 10.14%
19-21	7 6.60%	93 28.88%	9 18.37%	18 20.00%	16 11.59%
22-24	3 2.83%	11 3.42%	0 0.00%	9 10.00%	2 1.45%
25-30	3 2.83%	15 4.66%	2 4.08%	8 8.89%	6 4.35%
31-35	0 0.00%	7 2.17%	2 4.08%	5 5.56%	3 2.17%
36-50	1 0.94%	19 5.90%	2 4.08%	3 3.33%	4 2.90%
51-64	0 0.00%	4 1.24%	0 0.00%	0 0.00%	0 0.00%
65 and Over	0 0.00%	0 0.00%	0 0.00%	0 0.00%	0 0.00%
Average Age	17.44	20.48	19.35	20.29	18.73

¹ Centers include non-campus locations that are staffed, have regular posted hours, and offer credit courses every semester.

² Other includes students with tuition exemptions and waivers.

³ Full-time - 6 credit hours or more.

NOTES: Students are counted once for each location they attend. Percents may not add to 100 due to rounding.

Source: 4th Class Day Data (Second 5½ week session)

**Student Headcount
Centers¹ by Location (continued)
Summer 2008**

	Lockhart	Round Rock Higher Education Center	San Marcos Center	San Marcos Lamar Center
Student Headcount	35	626	171	68
Credit Hours	111	2,200	573	237
Average Credit Hours	3.17	3.51	3.35	3.49
Contact Hours	1,776	37,744	9,600	4,080
Average Contact Hours	50.74	60.29	56.14	60.00
Residency				
In-District	1 2.86%	348 55.59%	21 12.28%	12 17.65%
Out-of-District	34 97.14%	274 43.77%	150 87.72%	55 80.88%
Out-of-State/International	0 0.00%	2 0.32%	0 0.00%	1 1.47%
Other ²	0 0.00%	2 0.32%	0 0.00%	0 0.00%
Gender				
Male	18 51.43%	251 40.10%	77 45.03%	30 44.12%
Female	17 48.57%	375 59.90%	94 54.97%	38 55.88%
Status				
Part-time	30 85.71%	283 45.21%	96 56.14%	25 36.76%
Full-time ³	5 14.29%	343 54.79%	75 43.86%	43 63.24%
Ethnicity				
White	1 2.86%	393 62.78%	94 54.97%	38 55.88%
Black	1 2.86%	59 9.42%	8 4.68%	4 5.88%
Hispanic	13 37.14%	111 17.73%	65 38.01%	24 35.29%
Asian/Pacific Islander	0 0.00%	34 5.43%	2 1.17%	0 0.00%
Am. Indian/Alaskan Native	0 0.00%	10 1.60%	1 0.58%	1 1.47%
Non-Resident Alien	1 2.86%	11 1.76%	0 0.00%	0 0.00%
Other/Unknown	17 48.57%	8 1.28%	1 0.58%	1 1.47%
Age				
16 and Under	17 48.57%	77 12.30%	14 8.19%	0 0.00%
17	9 25.71%	79 12.62%	23 13.45%	6 8.82%
18	5 14.29%	60 9.58%	10 5.85%	5 7.35%
19-21	1 2.86%	187 29.87%	61 35.67%	31 45.59%
22-24	2 5.71%	68 10.86%	31 18.13%	9 13.24%
25-30	0 0.00%	61 9.74%	13 7.60%	10 14.71%
31-35	0 0.00%	38 6.07%	8 4.68%	5 7.35%
36-50	1 2.86%	47 7.51%	9 5.26%	2 2.94%
51-64	0 0.00%	7 1.12%	2 1.17%	0 0.00%
65 and Over	0 0.00%	2 0.32%	0 0.00%	0 0.00%
Average Age	17.83	22.73	22.33	22.69

¹ Centers include non-campus locations that are staffed, have regular posted hours, and offer credit courses every semester.

² Other includes students with tuition exemptions and waivers.

³ Full-time - 6 credit hours or more.

NOTES: Students are counted once for each location they attend. Percents may not add to 100 due to rounding.

Source: 4th Class Day Data (Second 5½ week session)

THIS PAGE INTENTIONALLY LEFT BLANK