

# Continuing Education

*This section can be used for finding:*

- *information about Continuing Education programs.*
- *organizations that offer service and training through community partnerships.*
- *demographic information on Continuing Education students.*
- *enrollment information for Continuing Education classes.*

## Contents

Useful Terms.....	244
Overview.....	245
Academic Year Programs .....	246
Community Partnerships .....	247
Testing Partnerships .....	247
Student Characteristics .....	248
Annual Headcount by Region and Zip Code .....	249
Annual Headcount by Zip Code Map.....	254
Annual Headcount by Zip Code .....	255
Course Enrollment by Location .....	258
Course Enrollment by Program Area.....	259

## Useful Terms

**Headcount** - the number of students enrolled in one or more courses. This number may be duplicated or unduplicated.

**Enrollment** - the number of courses students have registered for.

## Continuing Education Overview

Continuing Education programs at Austin Community College are conducted in the following areas:

Business Assessment Center provides the Austin community with comprehensive coverage of professional testing services. BACT is aligned with numerous Testing Companies and educational institutions, both nationally and internationally, to administer educational, performance-based, and high stakes assessments for higher education, business, industry, and international agencies. The center has been recognized as a leader in the development and utilization of innovative techniques designed for management and security of the exams administered. BACT is the only GED Testing Center in a three-county area.

Center for Teacher Certification provides training for those with a bachelor's degree and subject competency to become teachers in Texas. Candidates enter an internship as a first-year teacher and finish with a teaching certificate. Educator training is also available for professional development and additional certifications, training for instructional aides, online substitute teacher training, and childcare classes.

Community Programs provide a variety of programs to challenge the creative mind, increase and refine vocational skills, and develop individuals personally. Community Programs provide a wide range of programs that promote life-long learning. The Home and Garden program was awarded a National Exemplary Program Award.

Interior Design Institute includes Floral Design, Landscape Design, and Horticulture. These programs offer premier training for individuals wanting to enter the specific industries.

Institute of Language and Culture provides a variety of language classes which focus on speaking skills in a language.

Personal Enrichment provides other programs that include recreational courses, arts and crafts, photography, financial seminars, State Theatre classes, Event and Wedding Planning, Assessment Test Preparation and many more.

Customized Training provides a one-stop source for training solutions for business, industry, and governmental agencies. By collaborating with organizations to analyze learning needs, Customized Training will tailor educational experiences that will develop employee talent and improve performance. Programs are flexible, on target, convenient and a value-added resource, making Customized Training a partner in improved business results.

Workforce Development Center is designed to provide a wide range of training and educational opportunities for individuals getting started in the workplace, furthering their current careers, or working to meet licensure/certification requirements. The Center is made up of three Institutes that cover a wide range of industries.

Health Professions Institute provides entry-level training opportunities for individuals beginning their career in healthcare. The Health Professions Institute also provides continuing education opportunities for current healthcare professionals needing this education as part of their recertification, relicensure, and/or professional development.

High Technology Institute provides technology training through practical hands-on instruction for both new and experienced users. Courses range from computer fundamentals to web authoring, from software programming to AutoCAD training. The Technical Certification Programs include: Cisco, Oracle, Linux, CompTIA, Sun, Project Management, Microsoft, Video Game Development and more.

Business & Industry Institute provides training for those starting or transitioning to a new career, meeting professional continuing education requirements, or simply expanding upon their existing skills in a variety of industry specific program areas. Program areas include job entry training, business development, professional development, professional continuing education, and apprenticeship training.

## Continuing Education Academic Year 2009 Programs

### Teacher Education

- Teacher Certification
- ParaEducator Institute
- Professional Development for Teachers
- Substitute Teacher

### Community Programs

- Acting
- Arts and Crafts
- Assessment Test Preparation
- Building Construction
- Driving Safety
- ESOL
- Event Planning
- Financial Programs
- Floral Design
- Home and Gardens
- Horticulture and Landscaping
- Music
- Personal Enrichment
- Photography
- Sports and Recreation
- Summer Programs
- Trips and Tours
- Wedding Institute
- Writing Institute

### Customized Training

- Contract Classes for Business, Industry, Organizations and Governmental Agencies

### Workforce Development Center

#### • Health Professions Institute

- Advanced Skills
- Entry-Level Job Preparation  
(i.e. Dental Assisting, Medical Assisting)
- Basic Certification/Licensure  
(i.e. Nurse Aide, Massage Therapy)
- Life Saving (i.e. CPR, ACLS, PALS)
- Independent Study Courses
- Professional Continuing Education  
(i.e. Nursing, Social Work)
- Special Certificates

#### • Business & Industry Institute

- Apprenticeship
- Job Preparation  
(i.e. Truck Driving, Automotive, Child Care Dev.)
- Certification/Licensure (i.e. Real Estate, Home Inspection)
- Management and Supervision Courses
- Professional Continuing Education (i.e. Accounting)
- Renewable Energy
- Workplace Skills (i.e. Translator, Interpreter)

#### • High Technology Institute

- AutoCAD Training
- Classroom and Online Courses
- Computer Applications (i.e. Microsoft Office)
- Programming
- Project Management
- Technical Certifications (i.e. Microsoft, CISCO)
- Video Game Development
- Webmaster
- Wireless Technology

## Community Partnerships

Continuing Education maintains partnerships with local business and industry, as well as professional accrediting entities, to provide education and training that remains responsive and current to the community's needs. Partnerships include:

- |  |   |
|--|---|
| Academy of General Dentistry (AGD)                                 | Northern Alberta Institute of Technology (NAIT)             |
| American Heart Association (AHA)                                   | Oracle  |
| American Institute of Architects                                   | Project Management Institute                                |
| American Society for Quality (ASQ)                                 | Seton Healthcare Network                                    |
| Association of Contingency Planners                                | St. David's Healthcare Partnership                          |
| Austin APICS   | State Board for Educator Certification                      |
| Austin Chapter of the Texas Association of Addiction Professionals | State Theatre School of Acting                              |
| Austin District Dental Hygienist's Society                         | Sun Microsystems  |
| Austin Information Systems Security Association                    | Texas Board of Nurse Examiners                              |
| Austin Project Management Institute                                | Texas Board of Nursing Facility Administrators              |
| Austin Travis County Mental Health and Mental Retardation          | Texas Board of Public Accountancy                           |
| Building Owners and Managers Association (BOMA)                    | Texas Commission on Alcoholism and Drug Abuse               |
| CISCO  | Texas Commission on Environmental Quality                   |
| CompTIA  | Texas Department of Health Board of Massage                 |
| Dental Assisting National Board                                    | Texas Department of Human Services                          |
| Entertech  | Texas Department of State Health Services (DSHS)            |
| Information Systems Security Association (ISSA)                    | Texas Education Agency                                      |
| Insurance Institute of America                                     | Texas Notary Public Association                             |
| International Foundation of Employee Benefit Plans                 | Texas Nurses Association                                    |
| International Schools Professional Driver Training                 | Texas Real Estate Commission                                |
| Localization Advisory Board  | Texas State Board of Public Accountancy                     |
| Microsoft  | Texas State Board of Social Work Examiners                  |
| National Academies of Emergency Dispatch (NAED)                    | Texas State Florist Association                             |
| National Certification Council for Activity Professionals          | Transportation Professionals of Central Texas               |
| National Executive Housekeepers Association (NEHA)                 | TX Certification Board of Alcohol and Drug Abuse Counselors |
| National Fire Prevention Association                               | U.S. Department of Labor–Bureau of Apprenticeship Training  |
| National Joint Apprenticeship and Training Committee               |   |

## Testing Partnerships

Business Assessment Center - Continuing Education is aligned with numerous national and international Testing Companies and Organizations in order to provide the Austin area with comprehensive coverage of professional testing services. Some of our associates include:

- |  |   |
|--|---|
| ACT  | Consortium of College Testing Centers           |
| ACT WorkKeys   | American Council on Education                   |
| Castle Worldwide   | Assessment Technologies Institute               |
| Electrical Generator Systems Association                         | Educational Testing Service                     |
| Iso-Quality Testing  | General Educational Development Testing Service |
| Law School Admissions Council                                    | Kryterion                                       |
| National Institute for Certification in Engineering Technologies | Manufacturing Skill Standards Council           |
| North American Board of Certified Energy Practitioners           | Pharmacy College Admission Council              |
| Pearson VUE  | Prometric                                       |
| PROV Exam Services   | Texas Education Agency                          |

Source: Office of Continuing Education

**Continuing Education  
Student Characteristics  
Academic Year 2005 - 2009**

	AY 2005	AY 2006	AY 2007	AY 2008	AY 2009	05-09 % chg
<b>Student Headcount</b>	<b>10,295</b>	<b>9,721</b>	<b>10,517</b>	<b>12,032</b>	<b>11,511</b>	<b>11.81%</b>
<b>Gender</b>						
Male	3,922 38.10%	3,803 39.12%	3,983 37.87%	5,035 41.85%	5,014 43.56%	27.84%
Female	6,373 61.90%	5,918 60.88%	6,534 62.13%	6,997 58.15%	6,497 56.44%	1.95%
<b>Ethnicity</b>						
White	6,031 58.58%	5,690 58.53%	6,055 57.57%	7,131 59.27%	6,940 60.29%	15.07%
Black	1,010 9.81%	957 9.84%	963 9.16%	1,046 8.69%	908 7.89%	-10.10%
Hispanic	2,050 19.91%	1,937 19.93%	2,293 21.80%	2,583 21.47%	2,601 22.60%	26.88%
Asian/Pacific Islander	649 6.30%	653 6.72%	693 6.59%	814 6.77%	754 6.55%	16.18%
Am. Indian/Alaskan Native	56 0.54%	64 0.66%	55 0.52%	63 0.52%	56 0.49%	0.00%
Non-Resident Alien	71 0.69%	66 0.68%	76 0.72%	88 0.73%	58 0.50%	-18.31%
Other/Unknown	428 4.16%	354 3.64%	382 3.63%	307 2.55%	194 1.69%	-54.67%
<b>Age</b>						
16 and Under	85 0.83%	34 0.35%	77 0.73%	167 1.39%	94 0.82%	10.59%
17	27 0.26%	9 0.09%	52 0.49%	34 0.28%	20 0.17%	-25.93%
18	38 0.37%	9 0.09%	106 1.01%	70 0.58%	74 0.64%	94.74%
19-21	324 3.15%	95 0.98%	476 4.53%	485 4.03%	513 4.46%	58.33%
22-24	617 5.99%	376 3.87%	762 7.25%	759 6.31%	740 6.43%	19.94%
25-30	1,870 18.16%	1,639 16.86%	2,000 19.02%	2,211 18.38%	2,063 17.92%	10.32%
31-35	1,473 14.31%	1,434 14.75%	1,497 14.23%	1,712 14.23%	1,684 14.63%	14.32%
36-50	3,707 36.01%	3,577 36.80%	3,553 33.78%	4,230 35.16%	4,093 35.56%	10.41%
51-64	1,920 18.65%	2,153 22.15%	1,707 16.23%	2,084 17.32%	1,998 17.36%	4.06%
65 and Over	234 2.27%	393 4.04%	233 2.22%	280 2.33%	230 2.00%	-1.71%
Unknown	0 0.00%	2 0.02%	54 0.51%	0 0.00%	2 0.02%	.

NOTE: Percents may not add to 100 due to rounding.

Source: Office of Institutional Effectiveness and Accountability

**Continuing Education  
Annual Headcount by Region and Zip Code  
Academic Year 2005 - 2009**

Region	Zip Code	2004-05	2005-06	2006-07	2007-08	2008-09	05-09 % chg
<b>Austin, Central</b>							
Austin	78701	69	102	109	76	76	10.14%
Austin	78703	138	138	152	152	141	2.17%
Austin	78705	106	111	125	119	130	22.64%
Austin	78712	3	1	0	0	1	-66.67%
Austin	78751	127	109	120	132	112	-11.81%
Austin	78752	116	106	109	108	109	-6.03%
Austin	78756	68	52	76	94	91	33.82%
Austin	78757	234	218	205	213	188	-19.66%
<b>Total</b>		<b>861</b>	<b>837</b>	<b>896</b>	<b>894</b>	<b>848</b>	<b>-1.51%</b>
<b>% of Grand Total</b>		<b>8.36%</b>	<b>8.47%</b>	<b>8.52%</b>	<b>7.43%</b>	<b>7.37%</b>	
<b>Austin, East</b>							
Austin	78702	150	113	107	160	146	-2.67%
Austin	78721	60	58	59	59	68	13.33%
Austin	78722	53	51	65	53	78	47.17%
Austin	78723	215	155	156	184	173	-19.53%
<b>Total</b>		<b>478</b>	<b>377</b>	<b>387</b>	<b>456</b>	<b>465</b>	<b>-2.72%</b>
<b>% of Grand Total</b>		<b>4.64%</b>	<b>3.82%</b>	<b>3.68%</b>	<b>3.79%</b>	<b>4.04%</b>	
<b>Austin, North</b>							
Austin	78727	275	307	279	318	298	8.36%
Austin	78728	187	127	125	149	147	-21.39%
Austin	78758	459	387	398	409	412	-10.24%
<b>Total</b>		<b>921</b>	<b>821</b>	<b>802</b>	<b>876</b>	<b>857</b>	<b>-6.95%</b>
<b>% of Grand Total</b>		<b>8.95%</b>	<b>8.31%</b>	<b>7.63%</b>	<b>7.28%</b>	<b>7.45%</b>	
<b>Austin, Northwest</b>							
Austin	78726	77	67	61	95	78	1.30%
Austin	78730	34	37	30	50	44	29.41%
Austin	78731	245	227	244	256	224	-8.57%
Austin	78750	142	154	161	173	159	11.97%
Austin	78759	446	468	446	417	422	-5.38%
<b>Total</b>		<b>944</b>	<b>953</b>	<b>942</b>	<b>991</b>	<b>927</b>	<b>-1.80%</b>
<b>% of Grand Total</b>		<b>9.17%</b>	<b>9.64%</b>	<b>8.96%</b>	<b>8.24%</b>	<b>8.05%</b>	
<b>Austin/Travis County, South</b>							
Manchaca	78652	23	14	20	31	48	108.70%
Austin	78704	466	423	423	425	463	-0.64%
Austin	78745	484	454	504	532	531	9.71%
Austin	78748	289	281	294	350	364	25.95%
<b>Total</b>		<b>1,262</b>	<b>1,172</b>	<b>1,241</b>	<b>1,338</b>	<b>1,406</b>	<b>11.41%</b>
<b>% of Grand Total</b>		<b>12.26%</b>	<b>11.86%</b>	<b>11.80%</b>	<b>11.12%</b>	<b>12.21%</b>	

NOTE: Headcount is based on zip code data as reported and entered in the ACC database. Zip code regions are based on definition developed by ACC administration.

Source: Office of Institutional Effectiveness and Accountability

**Continuing Education  
Annual Headcount by Region and Zip Code (continued)  
Academic Year 2005 - 2009**

Region	Zip Code	2004-05	2005-06	2006-07	2007-08	2008-09	05-09 % chg
<b>Austin/Travis County, Southeast</b>							
Del Valle	78617	72	84	74	68	69	-4.17%
Austin	78719	6	8	8	3	6	0.00%
Austin	78741	294	294	289	332	304	3.40%
Austin	78742	9	7	7	4	4	-55.56%
Austin	78744	221	223	223	263	199	-9.95%
Austin	78747	1	54	87	83	72	7100.00%
<b>Total</b>		<b>603</b>	<b>670</b>	<b>688</b>	<b>753</b>	<b>654</b>	<b>8.46%</b>
<b>% of Grand Total</b>		<b>5.86%</b>	<b>6.78%</b>	<b>6.54%</b>	<b>6.26%</b>	<b>5.68%</b>	
<b>Austin/Travis County, Southwest</b>							
Austin	78735	77	76	86	90	83	7.79%
Austin	78736	61	61	55	57	47	-22.95%
Austin	78739	60	79	71	80	90	50.00%
Austin	78746	117	160	155	193	190	62.39%
Austin	78749	234	240	249	296	299	27.78%
<b>Total</b>		<b>549</b>	<b>616</b>	<b>616</b>	<b>716</b>	<b>709</b>	<b>29.14%</b>
<b>% of Grand Total</b>		<b>5.33%</b>	<b>6.23%</b>	<b>5.86%</b>	<b>5.95%</b>	<b>6.16%</b>	
<b>Bastrop County<sup>1</sup></b>							
Bastrop	78602	95	65	70	76	65	-31.58%
Cedar Creek	78612	51	35	30	43	44	-13.73%
Elgin	78621	68	54	50	67	76	11.76%
McDade	78650	1	6	2	6	5	400.00%
Paige	78659	11	5	7	9	12	9.09%
Red Rock	78662	9	4	5	8	11	22.22%
Rosanky	78953	2	1	2	0	1	-50.00%
Smithville	78957	35	27	22	27	25	-28.57%
<b>Total</b>		<b>272</b>	<b>197</b>	<b>188</b>	<b>236</b>	<b>239</b>	<b>-12.13%</b>
<b>% of Grand Total</b>		<b>2.64%</b>	<b>1.99%</b>	<b>1.79%</b>	<b>1.96%</b>	<b>2.08%</b>	
<b>Blanco County<sup>1</sup></b>							
Blanco	78606	9	0	2	3	6	-33.33%
Johnson City	78636	3	3	2	7	9	200.00%
Round Mountain	78663	0	2	0	1	1	.
<b>Total</b>		<b>12</b>	<b>5</b>	<b>4</b>	<b>11</b>	<b>16</b>	<b>33.33%</b>
<b>% of Grand Total</b>		<b>0.12%</b>	<b>0.05%</b>	<b>0.04%</b>	<b>0.09%</b>	<b>0.14%</b>	

<sup>1</sup> These numbers do not represent total headcount for the county due to zip codes that span more than one county.

NOTE: Headcount is based on zip code data as reported and entered in the ACC database. Zip code regions are based on definition developed by ACC administration.

Source: Office of Institutional Effectiveness and Accountability



**Continuing Education  
Annual Headcount by Region and Zip Code (continued)  
Academic Year 2005 - 2009**

Region	Zip Code	2004-05	2005-06	2006-07	2007-08	2008-09	05-09 % chg
<b>Burnet County<sup>1</sup></b>							
Bertram	78605	17	9	10	8	9	-47.06%
Briggs	78608	0	1	0	2	1	.
Burnet	78611	11	15	13	13	22	100.00%
Marble Falls	78654	22	23	17	22	35	59.09%
<b>Total</b>		<b>50</b>	<b>48</b>	<b>40</b>	<b>45</b>	<b>67</b>	<b>34.00%</b>
<b>% of Grand Total</b>		<b>0.49%</b>	<b>0.49%</b>	<b>0.38%</b>	<b>0.37%</b>	<b>0.58%</b>	
<b>Caldwell County<sup>1</sup></b>							
Dale	78616	20	14	12	17	8	-60.00%
Lockhart	78644	40	33	38	58	50	25.00%
Luling	78648	4	5	7	12	9	125.00%
Martindale	78655	2	3	10	6	7	250.00%
Maxwell	78656	5	1	4	3	2	-60.00%
<b>Total</b>		<b>71</b>	<b>56</b>	<b>71</b>	<b>96</b>	<b>76</b>	<b>7.04%</b>
<b>% of Grand Total</b>		<b>0.69%</b>	<b>0.57%</b>	<b>0.68%</b>	<b>0.80%</b>	<b>0.66%</b>	
<b>Cedar Park/Leander</b>							
Cedar Park	78613	429	409	419	576	497	15.85%
Leander	78641	252	246	259	272	243	-3.57%
Liberty Hill	78642	24	20	23	34	28	16.67%
<b>Total</b>		<b>705</b>	<b>675</b>	<b>701</b>	<b>882</b>	<b>768</b>	<b>8.94%</b>
<b>% of Grand Total</b>		<b>6.85%</b>	<b>6.83%</b>	<b>6.67%</b>	<b>7.33%</b>	<b>6.67%</b>	
<b>Georgetown/North Williamson County</b>							
Florence	76527	12	9	18	16	16	33.33%
Granger	76530	11	6	7	6	7	-36.36%
Jarrell	76537	6	5	8	17	12	100.00%
Georgetown	78626	83	68	75	99	79	-4.82%
Georgetown	78628	116	109	105	108	119	2.59%
Georgetown	78633	0	0	0	26	28	.
<b>Total</b>		<b>228</b>	<b>197</b>	<b>213</b>	<b>272</b>	<b>261</b>	<b>14.47%</b>
<b>% of Grand Total</b>		<b>2.21%</b>	<b>1.99%</b>	<b>2.03%</b>	<b>2.26%</b>	<b>2.27%</b>	

<sup>1</sup> These numbers do not represent total headcount for the county due to zip codes that span more than one county.

NOTE: Headcount is based on zip code data as reported and entered in the ACC database. Zip code regions are based on definition developed by ACC administration.

Source: Office of Institutional Effectiveness and Accountability

**Continuing Education  
Annual Headcount by Region and Zip Code (continued)  
Academic Year 2005 - 2009**

Region	Zip Code	2004-05	2005-06	2006-07	2007-08	2008-09	05-09 % chg
<b>Gillespie County<sup>1</sup></b>							
Fredericksburg	78624	12	12	4	17	21	75.00%
Harper	78631	0	1	1	1	2	.
Stonewall	78671	0	0	0	1	0	.
<b>Total</b>		<b>12</b>	<b>13</b>	<b>5</b>	<b>19</b>	<b>23</b>	<b>91.67%</b>
<b>% of Grand Total</b>		<b>0.12%</b>	<b>0.13%</b>	<b>0.05%</b>	<b>0.16%</b>	<b>0.20%</b>	
<b>Gonzales County</b>							
Nixon	78140	.	.	1	1	1	.
Gonzales	78629	.	.	2	4	3	.
Ottine	78658	.	.	0	1	0	.
<b>Total</b>		<b>0</b>	<b>0</b>	<b>3</b>	<b>6</b>	<b>4</b>	<b>.</b>
<b>% of Grand Total</b>		<b>0.00%</b>	<b>0.00%</b>	<b>0.00%</b>	<b>0.05%</b>	<b>0.03%</b>	
<b>Hays County<sup>1</sup></b>							
Buda	78610	51	65	77	103	92	80.39%
Driftwood	78619	7	9	13	16	16	128.57%
Dripping Springs	78620	43	37	45	70	78	81.40%
Kyle	78640	106	107	112	149	150	41.51%
San Marcos	78666	98	88	122	149	83	-15.31%
San Marcos	78667	0	0	0	13	8	.
Wimberley	78676	29	24	32	43	40	37.93%
Austin	78737	37	59	43	71	84	127.03%
<b>Total</b>		<b>371</b>	<b>389</b>	<b>444</b>	<b>614</b>	<b>551</b>	<b>48.52%</b>
<b>% of Grand Total</b>		<b>3.60%</b>	<b>3.94%</b>	<b>4.22%</b>	<b>5.10%</b>	<b>4.79%</b>	
<b>Manor/East Travis County</b>							
Manor	78653	94	86	96	114	84	-10.64%
Austin	78724	89	72	83	93	80	-10.11%
Austin	78725	25	20	35	33	35	40.00%
<b>Total</b>		<b>208</b>	<b>178</b>	<b>214</b>	<b>240</b>	<b>199</b>	<b>-4.33%</b>
<b>% of Grand Total</b>		<b>2.02%</b>	<b>1.80%</b>	<b>2.03%</b>	<b>1.99%</b>	<b>1.73%</b>	
<b>Pflugerville/Northeast Travis County</b>							
Pflugerville	78660	305	283	339	435	389	27.54%
Austin	78753	391	358	353	382	346	-11.51%
Austin	78754	79	98	80	110	94	18.99%
<b>Total</b>		<b>775</b>	<b>739</b>	<b>772</b>	<b>927</b>	<b>829</b>	<b>6.97%</b>
<b>% of Grand Total</b>		<b>7.53%</b>	<b>7.48%</b>	<b>7.34%</b>	<b>7.70%</b>	<b>7.20%</b>	

<sup>1</sup> These numbers do not represent total headcount for the county due to zip codes that span more than one county.

NOTE: Headcount is based on zip code data as reported and entered in the ACC database. Zip code regions are based on definition developed by ACC administration.

Source: Office of Institutional Effectiveness and Accountability

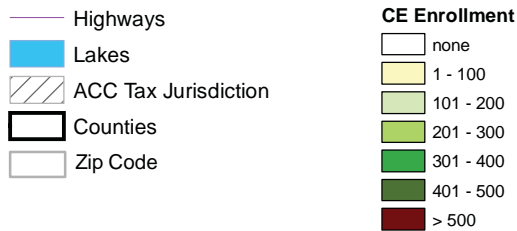
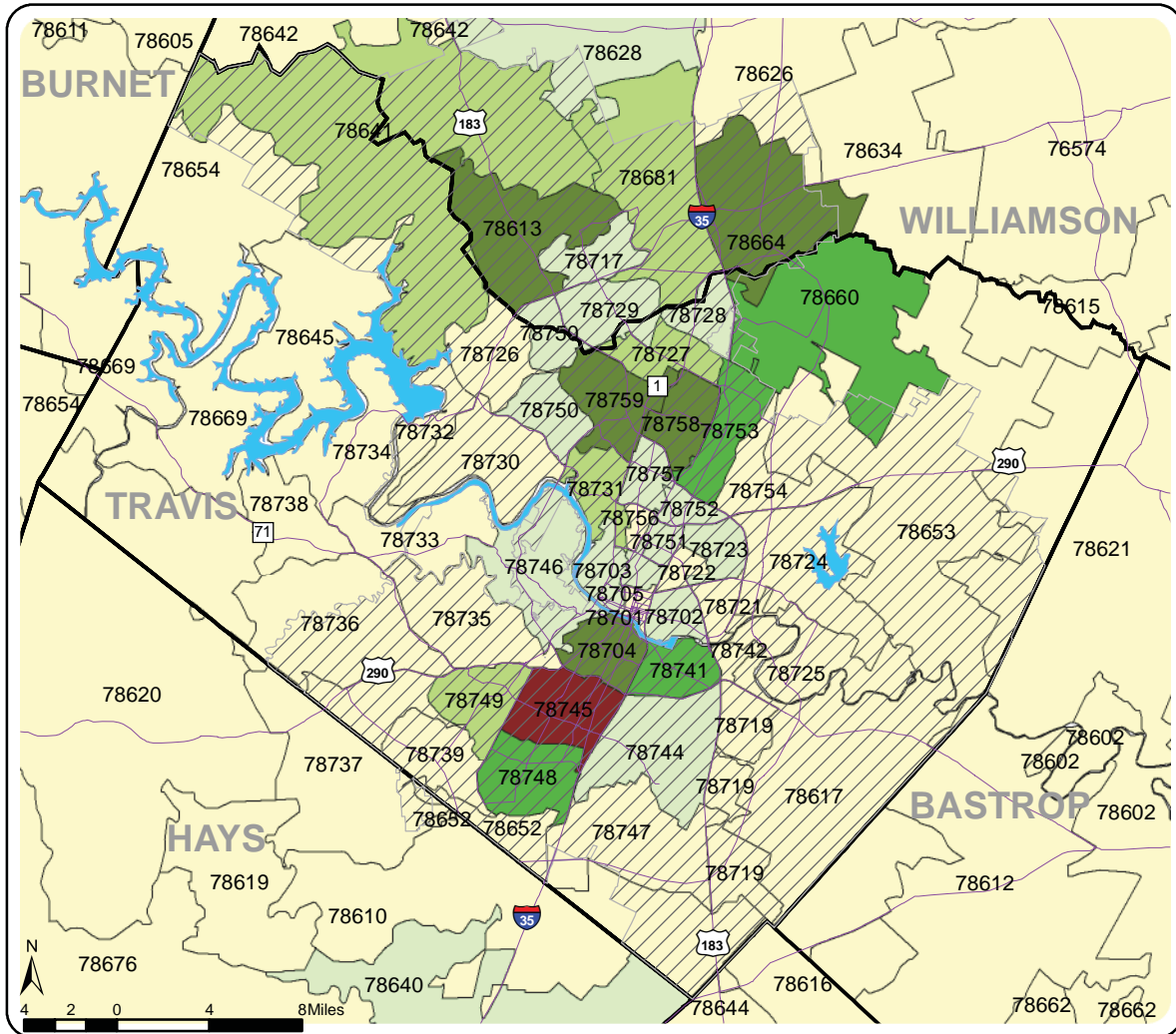
**Continuing Education  
Annual Headcount by Region and Zip Code (continued)  
Academic Year 2005 - 2009**

Region	Zip Code	2004-05	2005-06	2006-07	2007-08	2008-09	05-09 % chg
<b>Round Rock</b>							
Round Rock	78664	411	412	403	462	417	1.46%
Round Rock	78665	0	0	0	100	165	.
Round Rock	78681	202	209	213	274	285	41.09%
Austin	78717	102	71	104	145	139	36.27%
Austin	78729	177	167	170	205	183	3.39%
<b>Total</b>		<b>892</b>	<b>859</b>	<b>890</b>	<b>1,186</b>	<b>1,189</b>	<b>33.30%</b>
<b>% of Grand Total</b>		<b>8.66%</b>	<b>8.69%</b>	<b>8.46%</b>	<b>9.86%</b>	<b>10.33%</b>	
<b>Taylor/Hutto/East Williamson County</b>							
Taylor	76574	57	32	27	42	38	-33.33%
Thrall	76578	4	6	3	4	3	-25.00%
Coupland	78615	5	4	4	5	8	60.00%
Hutto	78634	55	56	63	85	79	43.64%
<b>Total</b>		<b>121</b>	<b>98</b>	<b>97</b>	<b>136</b>	<b>128</b>	<b>5.79%</b>
<b>% of Grand Total</b>		<b>1.18%</b>	<b>0.99%</b>	<b>0.92%</b>	<b>1.13%</b>	<b>1.11%</b>	
<b>West Travis County</b>							
Leander	78645	53	59	51	55	53	0.00%
Spicewood	78669	13	19	16	19	32	146.15%
Austin	78732	30	27	45	54	56	86.67%
Austin	78733	25	27	38	29	40	60.00%
Austin	78734	60	75	61	84	80	33.33%
Austin	78738	27	30	33	39	41	51.85%
<b>Total</b>		<b>208</b>	<b>237</b>	<b>244</b>	<b>280</b>	<b>302</b>	<b>45.19%</b>
<b>% of Grand Total</b>		<b>2.02%</b>	<b>2.40%</b>	<b>2.32%</b>	<b>2.33%</b>	<b>2.62%</b>	
<b>Other/Unknown</b>		<b>752</b>	<b>745</b>	<b>1,059</b>	<b>1,058</b>	<b>993</b>	<b>32.05%</b>
<b>% of Grand Total</b>		<b>7.30%</b>	<b>7.54%</b>	<b>10.10%</b>	<b>8.79%</b>	<b>8.63%</b>	
<b>Grand Total</b>		<b>10,295</b>	<b>9,882</b>	<b>10,517</b>	<b>12,032</b>	<b>11,511</b>	<b>11.81%</b>

NOTE: Headcount is based on zip code data as reported and entered in the ACC database. Zip code regions are based on definition developed by ACC administration.

Source: Office of Institutional Effectiveness and Accountability

## Continuing Education Annual Headcount by Zip Code Map Academic Year 2009



NOTE: Headcount is based on zip code data as reported and entered in the ACC database.

Source: Office of Institutional Effectiveness and Accountability

**Continuing Education  
Annual Headcount by Zip Code  
Academic Year 2005 - 2009**

Zip Code	Region	AY 2005	AY 2006	AY 2007	AY 2008	AY 2009	05-09 % chg
76527	Florence	12	9	18	16	16	33.33%
76530	Granger	11	6	7	6	7	-36.36%
76537	Jarrell	6	5	8	17	12	100.00%
76574	Taylor	57	32	27	42	38	-33.33%
76578	Thrall	4	6	3	4	3	-25.00%
78140	Nixon	.	.	1	1	1	.
78602	Bastrop	95	65	70	76	65	-31.58%
78605	Bertram	17	9	10	8	9	-47.06%
78606	Blanco	9	0	2	3	6	-33.33%
78608	Briggs	0	1	0	2	1	.
78610	Buda	51	65	77	103	92	80.39%
78611	Burnet	11	15	13	13	22	100.00%
78612	Cedar Creek	51	35	30	43	44	-13.73%
78613	Cedar Park	429	409	419	576	497	15.85%
78615	Coupland	5	4	4	5	8	60.00%
78616	Dale	20	14	12	17	8	-60.00%
78617	Del Valle	72	84	74	68	69	-4.17%
78619	Driftwood	7	9	13	16	16	128.57%
78620	Dripping Springs	43	37	45	70	78	81.40%
78621	Elgin	68	54	50	67	76	11.76%
78624	Fredericksburg	12	12	4	17	21	75.00%
78626	Georgetown	83	68	75	99	79	-4.82%
78628	Georgetown	116	109	105	108	119	2.59%
78629	Gonzales	.	.	2	4	3	.
78631	Harper	0	1	1	1	2	.
78633	Georgetown	.	.	1	26	28	.
78634	Hutto	55	56	63	85	79	43.64%
78636	Johnson City	3	3	2	7	9	200.00%
78640	Kyle	106	107	112	149	150	41.51%
78641	Leander	252	246	259	272	243	-3.57%
78642	Liberty Hill	24	20	23	34	28	16.67%
78644	Lockhart	40	33	38	58	50	25.00%
78645	Leander	53	59	51	55	53	0.00%
78648	Luling	4	5	7	12	9	125.00%
78650	McDade	1	6	2	6	5	400.00%
78652	Manchaca	23	14	20	31	48	108.70%

<sup>1</sup> These numbers do not represent total headcount for the county due to zip codes that span more than one county.

NOTE: Headcount is based on zip code data as reported and entered in the ACC database. Zip code regions are based on definition developed by ACC administration.

Source: Office of Institutional Effectiveness and Accountability

**Continuing Education  
Annual Headcount by Zip Code (continued)  
Academic Year 2005 - 2009**

Zip Code	Region	AY 2005	AY 2006	AY 2007	AY 2008	AY 2009	05-09 % chg
78653	Manor	94	86	96	114	84	-10.64%
78654	Marble Falls	22	23	17	22	35	59.09%
78655	Martindale	2	3	10	6	7	250.00%
78656	Maxwell	5	1	4	3	2	-60.00%
78658	Ottine	.	.	.	1	0	.
78659	Paige	11	5	7	9	12	9.09%
78660	Pflugerville	305	283	339	435	389	27.54%
78662	Red Rock	9	4	5	8	11	22.22%
78663	Round Mountain	0	2	0	1	1	.
78664	Round Rock	411	412	403	462	417	1.46%
78665	Round Rock	.	.	1	100	165	.
78666	San Marcos	98	88	122	149	83	-15.31%
78667	San Marcos	.	.	1	13	8	.
78669	Spicewood	13	19	16	19	32	146.15%
78671	Stonewall	0	0	0	1	0	.
78676	Wimberley	29	24	32	43	40	37.93%
78681	Round Rock	202	209	213	274	285	41.09%
78701	Austin	69	102	109	76	76	10.14%
78702	Austin	150	113	107	160	146	-2.67%
78703	Austin	138	138	152	152	141	2.17%
78704	Austin	466	423	423	425	463	-0.64%
78705	Austin	106	111	125	119	130	22.64%
78712	Austin	3	1	0	0	1	-66.67%
78717	Austin	102	71	104	145	139	36.27%
78719	Austin	6	8	8	3	6	0.00%
78721	Austin	60	58	59	59	68	13.33%
78722	Austin	53	51	65	53	78	47.17%
78723	Austin	215	155	156	184	173	-19.53%
78724	Austin	89	72	83	93	80	-10.11%
78725	Austin	25	20	35	33	35	40.00%
78726	Austin	77	67	61	95	78	1.30%
78727	Austin	275	307	279	318	298	8.36%
78728	Austin	187	127	125	149	147	-21.39%
78729	Austin	177	167	170	205	183	3.39%
78730	Austin	34	37	30	50	44	29.41%
78731	Austin	245	227	244	256	224	-8.57%

<sup>1</sup> These numbers do not represent total headcount for the county due to zip codes that span more than one county.

NOTE: Headcount is based on zip code data as reported and entered in the ACC database. Zip code regions are based on definition developed by ACC administration.

Source: Office of Institutional Effectiveness and Accountability

**Continuing Education  
Annual Headcount by Zip Code (continued)  
Academic Year 2005 - 2009**

Zip Code	Region	AY 2005	AY 2006	AY 2007	AY 2008	AY 2009	05-09 % chg
78732	Austin	30	27	45	54	56	86.67%
78733	Austin	25	27	38	29	40	60.00%
78734	Austin	60	75	61	84	80	33.33%
78735	Austin	77	76	86	90	83	7.79%
78736	Austin	61	61	55	57	47	-22.95%
78737	Austin	37	59	43	71	84	127.03%
78738	Austin	27	30	33	39	41	51.85%
78739	Austin	60	79	71	80	90	50.00%
78741	Austin	294	294	289	332	304	3.40%
78742	Austin	9	7	7	4	4	-55.56%
78744	Austin	221	223	223	263	199	-9.95%
78745	Austin	484	454	504	532	531	9.71%
78746	Austin	117	160	155	193	190	62.39%
78747	Austin	1	54	87	83	72	7100.00%
78748	Austin	289	281	294	350	364	25.95%
78749	Austin	234	240	249	296	299	27.78%
78750	Austin	142	154	161	173	159	11.97%
78751	Austin	127	109	120	132	112	-11.81%
78752	Austin	116	106	109	108	109	-6.03%
78753	Austin	391	358	353	382	346	-11.51%
78754	Austin	79	98	80	110	94	18.99%
78756	Austin	68	52	76	94	91	33.82%
78757	Austin	234	218	205	213	188	-19.66%
78758	Austin	459	387	398	409	412	-10.24%
78759	Austin	446	468	446	417	422	-5.38%
78953	Rosanky	2	1	2	0	1	-50.00%
78957	Smithville	35	27	22	27	25	-28.57%
	Other/Unknown	752	745	1,062	1,058	993	32.05%
	<b>GRAND TOTAL</b>	<b>10,295</b>	<b>9,882</b>	<b>10,517</b>	<b>12,032</b>	<b>11,511</b>	<b>11.81%</b>

<sup>1</sup> These numbers do not represent total headcount for the county due to zip codes that span more than one county.

NOTE: Headcount is based on zip code data as reported and entered in the ACC database. Zip code regions are based on definition developed by ACC administration.

Source: Office of Institutional Effectiveness and Accountability



## Continuing Education Course Enrollment by Location Academic Year 2009

Location	2008-09	Percent of Total
A Sculpture Studio	10	0.04%
Anderson High School	8	0.03%
Art Glass Fusing Center	81	0.34%
Associated Builders & Contract	11	0.05%
Austin Fire Department	426	1.78%
Austin Self Defense	13	0.05%
Bastrop High School	3	0.01%
Bob Wentz Park At Windy Point	7	0.03%
Buckner Villas Retirement Comm	46	0.19%
Carpenters Hall (JATC) <sup>1</sup>	42	0.18%
Concordia Academy	40	0.17%
Contract Training Location	507	2.12%
Crockett High School	16	0.07%
Custom Cycle & Machine	35	0.15%
Cypress Creek Campus (ACC)	327	1.37%
D Ette Dance Studio	2	0.01%
Dance International	97	0.41%
Dancer's Workshop	19	0.08%
Decola & Eusebi Studio	23	0.10%
East by South East Studios, LI	20	0.08%
Eastview Campus (ACC)	895	3.74%
Gary Job Corp	26	0.11%
Georgetown High School	59	0.25%
Georgetown Wesleyan Nursing	71	0.30%
Govalle Care Center	95	0.40%
Harvey Penick Golf Campus	21	0.09%
Hay's County Sheriff's Office	68	0.28%
Henna Chevrolet	1	0.00%
Highland Business Center (ACC)	16,550	69.22%
Intertech Flooring	34	0.14%
Iron Works (JATC)	157	0.66%
Leander High School	21	0.09%
Muchison Middle School	4	0.02%
Morris Williams Golf Course	7	0.03%
Northridge Campus (ACC)	916	3.83%
Out Back Stables	8	0.03%
Pinnacle Campus (ACC)	100	0.42%
Pioneer Farms	72	0.30%
Raindrop Turkish Cultural Center	25	0.10%
Rio Grande Campus (ACC)	443	1.85%
Riverside Campus (ACC)	1,190	4.98%
Round Rock Higher Education Center	43	0.18%
South Austin Campus (ACC)	630	2.64%
State Theater School Acting	443	1.85%
Stonebridge Health Center, Inc	85	0.36%
Stony Point High School	6	0.03%
Texas Rowing Center	31	0.13%
The Carver Center	3	0.01%
Town Lake Animal Shelter	25	0.10%
Vino 100	6	0.03%
Williamson County Workforce	129	0.54%
YMCA East Communities	11	0.05%
<b>TOTAL</b>	<b>23,908</b>	<b>100.00%</b>

<sup>1</sup> JATC is an abbreviation for Joint Apprenticeship and Training Committees.

NOTE: Students who enroll in more than one course are counted once for each course. Percents may not add to 100 due to rounding.

Source: Office of Institutional Effectiveness and Accountability



**Continuing Education  
Course Enrollment by Program Area  
Academic Year 2009**

<b>Program Area</b>	<b>AY 2005</b>	<b>AY 2006</b>	<b>AY 2007</b>	<b>AY 2008</b>	<b>AY 2009</b>	<b>05-09 % chg</b>
Apprenticeship	282	313	300	288	232	-17.73%
Business & Industry Institute	3,418	2,990	2,889	5,968	10,020	193.15%
Community Programs	1,746	3,717	4,394	4,575	4,625	164.89%
Computer Applications	1,912	1,824	2,095	2,488	2,017	5.49%
Customized Training	2,901	1,762	2,077	2,230	2,097	-27.71%
Health Professions Institute	4,516	3,832	3,818	6,466	3,592	-20.46%
High Technology Institute	584	756	954	1,129	749	28.25%
Independent Study	27	109	51	51	9	-66.67%
Job Entry Preparation <sup>1</sup>	695	.	80	.	.	.
Management and Supervision <sup>2</sup>	26	.	.	.	.	.
Non Profit Organizations	.	35	2	105	18	.
Teacher Certification	401	437	362	376	549	36.91%
Truck Driving <sup>3</sup>	425	495	242	.	.	.
<b>TOTAL</b>	<b>16,933</b>	<b>16,270</b>	<b>17,264</b>	<b>23,676</b>	<b>23,908</b>	<b>41.19%</b>

<sup>1</sup> Some of these programs have been discontinued due to changing regional demand, and the remainder of the them are now included in the Business & Industry Institute numbers.

<sup>2</sup> These programs are now included in the Business & Industry Institute numbers.

<sup>3</sup> Truck Driving has been rolled into Business & Industry Institute beginning in Academic Year 2008.

NOTE: Students who enroll in more than one course are counted once for each course. Percents may not add to 100 due to rounding.

Source: Office of Institutional Effectiveness and Accountability

THIS PAGE INTENTIONALLY LEFT BLANK