

Student Characteristics
District-wide
Fall 2006 - 2010

		Fall 2006	Fall 2007	Fall 2008	Fall 2009	Fall 2010	06-10 % chg	
Student Headcount		33,039	33,508	35,798	40,248	44,100	33.48%	
Credit Hours		262,355	267,284	281,149	319,408	350,595	33.63%	
Average Credit Hours		7.94	7.98	7.85	7.94	7.95	0.12%	
Contact Hours		5,016,656	5,123,072	5,386,376	6,107,714	6,712,507	33.80%	
Average Contact Hours		151.84	152.89	150.47	151.75	152.21	0.24%	
Full-time Student Equivalent (FTSE)¹		17,490	17,819	18,743	21,294	23,373	33.63%	
Residency	In-District	23,533 71.23%	23,542 70.26%	27,221 76.04%	31,075 77.21%	34,005 77.11%	44.50%	
	Out-of-District	8,502 25.73%	9,081 27.10%	7,702 21.52%	8,173 20.31%	9,040 20.50%	6.33%	
	Out-of-State/International	689 2.09%	573 1.71%	496 1.39%	622 1.55%	676 1.53%	-1.89%	
	Other/Unknown ²	315 0.95%	312 0.93%	379 1.06%	378 0.94%	379 0.86%	20.32%	
Gender	Male	14,498 43.88%	14,434 43.08%	15,486 43.26%	17,672 43.91%	19,607 44.46%	35.24%	
	Female	18,541 56.12%	19,074 56.92%	20,312 56.74%	22,576 56.09%	24,493 55.54%	32.10%	
Student Status	Part-time	23,821 72.10%	24,276 72.45%	26,470 73.94%	29,433 73.13%	32,581 73.88%	36.77%	
	Full-time ³	9,218 27.90%	9,232 27.55%	9,328 26.06%	10,815 26.87%	11,519 26.12%	24.96%	
Race/Ethnicity (Unduplicated - students were counted in only one category) ⁴	White	19,467 58.92%	19,810 59.12%	20,754 57.98%	23,043 57.25%	23,231 52.68%	19.34%	
	Black	2,557 7.74%	2,689 8.02%	2,978 8.32%	3,543 8.80%	3,739 8.48%	46.23%	
	Hispanic	8,014 24.26%	7,897 23.57%	8,846 24.71%	10,065 25.01%	11,090 25.15%	38.38%	
	Asian	1,598 4.84%	1,780 5.31%	2,029 5.67%	2,222 5.52%	2,159 4.90%	35.11%	
	Hawaiian/Pacific Islander	36 0.08%	.	
	Am. Indian/Alaskan Native	294 0.89%	293 0.87%	306 0.85%	349 0.87%	429 0.97%	45.92%	
	Non-Resident Alien	661 2.00%	558 1.67%	441 1.23%	422 1.05%	666 1.51%	0.76%	
	Two or more	275 0.62%	.	
	Other/Unknown	448 1.36%	481 1.44%	444 1.24%	604 1.50%	2,475 5.61%	452.46%	
Race/Ethnicity (Duplicated - students may be counted in more than one category) ⁵	White	DATA NOT AVAILABLE					24,531 55.63%	.
	Black	DATA NOT AVAILABLE					3,903 8.85%	.
	Hispanic	DATA NOT AVAILABLE					11,090 25.15%	.
	Asian	DATA NOT AVAILABLE					2,270 5.15%	.
	Hawaiian/Pacific Islander	DATA NOT AVAILABLE					86 0.20%	.
	Am. Indian/Alaskan Native	DATA NOT AVAILABLE					766 1.74%	.
	Non-Resident Alien	DATA NOT AVAILABLE					666 1.51%	.
	Other/Unknown	DATA NOT AVAILABLE					2,475 5.61%	.
Age	16 and Under	844 2.55%	859 2.56%	1,075 3.00%	1,226 3.05%	1,560 3.54%	84.83%	
	17	1,415 4.28%	1,655 4.94%	1,742 4.87%	1,914 4.76%	1,983 4.50%	40.14%	
	18	3,104 9.39%	3,197 9.54%	3,489 9.75%	3,604 8.95%	3,769 8.55%	21.42%	
	19-21	9,586 29.01%	9,809 29.27%	10,147 28.35%	10,800 26.83%	11,261 25.54%	17.47%	
	22-24	5,370 16.25%	5,273 15.74%	5,492 15.34%	6,252 15.53%	6,791 15.40%	26.46%	
	25-30	5,907 17.88%	5,861 17.49%	6,311 17.63%	7,385 18.35%	8,318 18.86%	40.82%	
	31-35	2,533 7.67%	2,489 7.43%	2,787 7.79%	3,363 8.36%	3,894 8.83%	53.73%	
	36-50	3,501 10.60%	3,558 10.62%	3,845 10.74%	4,594 11.41%	5,229 11.86%	49.36%	
	51-64	703 2.13%	715 2.13%	839 2.34%	1,020 2.53%	1,196 2.71%	70.13%	
	65 and over	76 0.23%	85 0.25%	71 0.20%	87 0.22%	99 0.22%	30.26%	
	Unknown	0 0.00%	7 0.02%	0 0.00%	3 0.01%	0 0.00%	.	
	Average Age	25.40	25.30	25.40	25.80	26.07	2.64%	

¹ Full-time Student Equivalent (FTSE) is based on 15 SCH.

² Other/Unknown includes students with tuition exemptions and waivers.

³ Full-time - 12 credit hours or more.

⁴ Unduplicated Race/Ethnicity - students were counted in only one category based on their Race/Ethnicity selection. "Two or more" includes non-Hispanic students that selected more than one race category.

⁵ Duplicated Race/Ethnicity - students may be counted in more than one category based on their Race/Ethnicity selection with one exception: if students selected "Non-Resident Alien," they were counted only as "Non-Resident Alien" (regardless of whether they selected an additional race/ethnicity).

NOTE: Students who attend multiple locations are counted once at each location. Percents may not add to 100 due to rounding.

Source: Fall 12th Class Day Data

**Student Characteristics
Full-Time Student Equivalent (FTSE)¹
Fall 2007 - 2010**

		Fall 2007	Fall 2008	Fall 2009	Fall 2010	07-10 % chg	
Student Headcount		17,819	18,790	21,294	23,373	31.17%	
Residency	In-District	12,637 70.92%	14,389 76.58%	16,534 77.65%	18,098 77.43%	43.21%	
	Out-of-District	4,614 25.89%	3,826 20.36%	4,082 19.17%	4,582 19.60%	-0.69%	
	Out-of-State/International	328 1.84%	282 1.50%	375 1.76%	392 1.68%	19.51%	
	Other/Unknown ²	241 1.35%	294 1.56%	302 1.42%	301 1.29%	24.90%	
Gender	Male	8,046 45.15%	8,541 45.46%	9,829 46.16%	10,879 46.55%	35.21%	
	Female	9,773 54.85%	10,249 54.54%	11,465 53.84%	12,494 53.45%	27.84%	
Student Status	Part-time	9,783 54.90%	10,688 56.88%	11,934 56.04%	13,385 57.27%	36.82%	
	Full-time ³	8,036 45.10%	8,102 43.12%	9,360 43.96%	9,988 42.73%	24.29%	
Race/Ethnicity (Unduplicated - students were counted in only one category) ⁴	White	10,672 59.89%	11,022 58.66%	12,322 57.87%	12,442 53.23%	16.59%	
	Black	1,369 7.68%	1,488 7.92%	1,808 8.49%	1,911 8.18%	39.59%	
	Hispanic	4,084 22.92%	4,516 24.03%	5,237 24.59%	5,756 24.63%	40.94%	
	Asian	949 5.33%	1,102 5.86%	1,195 5.61%	1,165 4.98%	22.76%	
	Hawaiian/Pacific Islander	.	.	.	20 0.09%	.	
	Am. Indian/Alaskan Native	162 0.91%	167 0.89%	189 0.89%	228 0.98%	40.74%	
	Non-Resident Alien	334 1.87%	262 1.39%	250 1.17%	391 1.67%	17.07%	
	Two or more Other/Unknown	. 249 1.40%	. 233 1.24%	. 294 1.38%	156 0.67% 1,303 5.57%	. 423.29%	
Race/Ethnicity (Duplicated - students may be counted in more than one category) ⁵	White	DATA NOT AVAILABLE				13,121 56.14%	.
	Black	DATA NOT AVAILABLE				2,002 8.57%	.
	Hispanic	DATA NOT AVAILABLE				5,756 24.63%	.
	Asian	DATA NOT AVAILABLE				1,226 5.25%	.
	Hawaiian/Pacific Islander	DATA NOT AVAILABLE				51 0.22%	.
	Am. Indian/Alaskan Native	DATA NOT AVAILABLE				408 1.75%	.
	Non-Resident Alien	DATA NOT AVAILABLE				391 1.67%	.
	Other/Unknown	DATA NOT AVAILABLE				1,303 5.57%	.
Age	16 and Under	255 1.43%	308 1.64%	365 1.71%	463 1.98%	81.57%	
	17	571 3.20%	580 3.09%	634 2.98%	649 2.78%	13.66%	
	18	2,129 11.95%	2,299 12.24%	2,403 11.28%	2,503 10.71%	17.57%	
	19-21	6,127 34.38%	6,313 33.60%	6,679 31.37%	6,937 29.68%	13.22%	
	22-24	2,852 16.01%	2,948 15.69%	3,369 15.82%	3,671 15.71%	28.72%	
	25-30	2,952 16.57%	3,141 16.72%	3,794 17.82%	4,330 18.53%	46.68%	
	31-35	1,141 6.40%	1,287 6.85%	1,600 7.51%	1,922 8.22%	68.45%	
	36-50	1,499 8.41%	1,579 8.40%	2,027 9.52%	2,372 10.15%	58.24%	
	51-64	267 1.50%	316 1.68%	397 1.86%	496 2.12%	85.77%	
	65 and over Unknown	24 0.13% 2 0.01%	19 0.10% 0 0.00%	25 0.12% 1 0.00%	30 0.13% 0 0.00%	25.00% -100.00%	

¹ Full-time Student Equivalent (FTSE) is based on 15 SCH.

² Other/Unknown includes students with tuition exemptions and waivers.

³ Full-time - 12 credit hours or more.

⁴ Unduplicated Race/Ethnicity - students were counted in only one category based on their Race/Ethnicity selection. "Two or more" includes non-Hispanic students that selected more than one race category.

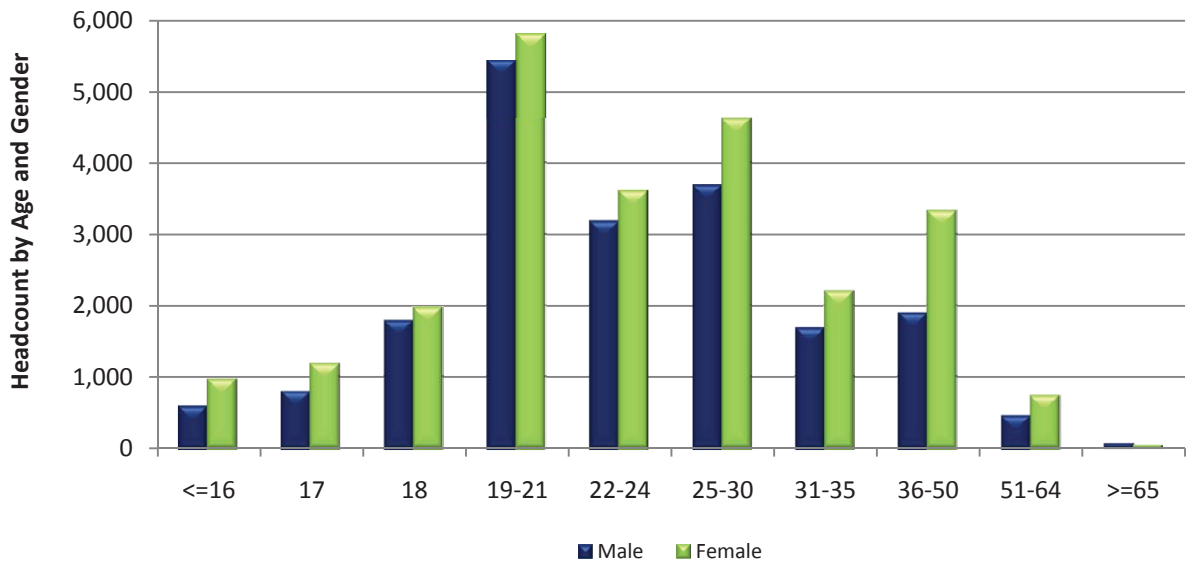
⁵ Duplicated Race/Ethnicity - students may be counted in more than one category based on their Race/Ethnicity selection with one exception: if students selected "Non-Resident Alien," they were counted only as "Non-Resident Alien" (regardless of whether they selected an additional race/ethnicity).

NOTE: Students who attend multiple locations are counted once at each location. Percents may not add to 100 due to rounding.

Source: Fall 12th Class Day Data

**Student Characteristics
Headcount by Age and Gender
Fall 2010**

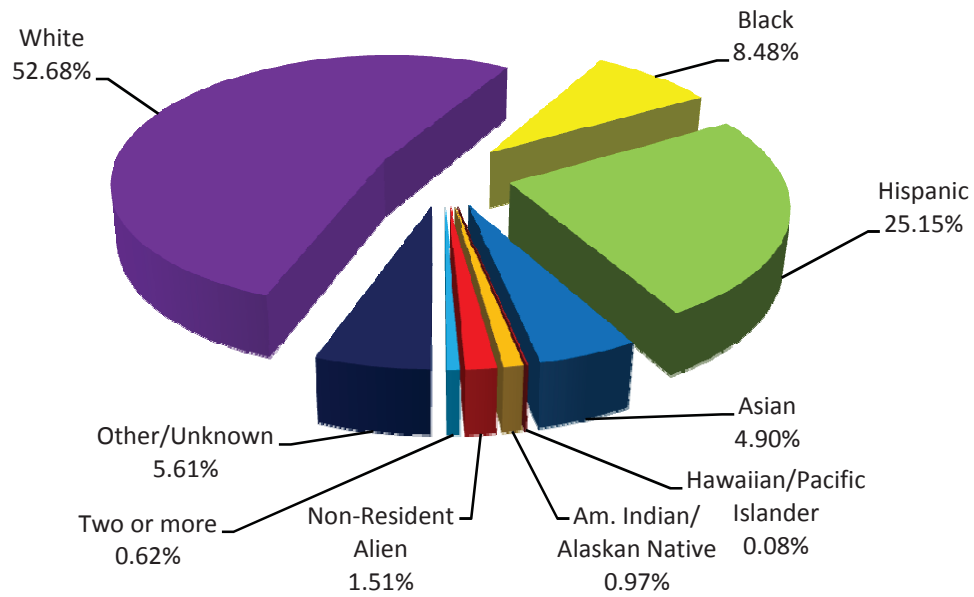
Age	Male		Female		Total	
16 and Under	592	3.02%	968	3.95%	1,560	3.54%
17	799	4.08%	1,184	4.83%	1,983	4.50%
18	1,791	9.13%	1,978	8.08%	3,769	8.55%
19-21	5,442	27.76%	5,819	23.76%	11,261	25.54%
22-24	3,183	16.23%	3,608	14.73%	6,791	15.40%
25-30	3,694	18.84%	4,624	18.88%	8,318	18.86%
31-35	1,688	8.61%	2,206	9.01%	3,894	8.83%
36-50	1,900	9.69%	3,329	13.59%	5,229	11.86%
51-64	457	2.33%	739	3.02%	1,196	2.71%
65 and over	61	0.31%	38	0.16%	99	0.22%
TOTAL	19,607	100.00%	24,493	100.00%	44,100	100.00%



NOTE: Percents may not add to 100 due to rounding.

Source: Fall 12th Class Day Data

**Student Characteristics
Headcount by Race/Ethnicity and Gender
Fall 2010**



Race/Ethnicity	Male		Female		Total	
	Headcount	Percentage	Headcount	Percentage	Headcount	Percentage
White	10,486	53.48%	12,745	52.04%	23,231	52.68%
Black	1,441	7.35%	2,298	9.38%	3,739	8.48%
Hispanic	4,801	24.49%	6,289	25.68%	11,090	25.15%
Asian	982	5.01%	1,177	4.81%	2,159	4.90%
Hawaiian/Pacific Islander	20	0.10%	16	0.07%	36	0.08%
Am. Indian/Alaskan Native	242	1.23%	187	0.76%	429	0.97%
Non-Resident Alien	306	1.56%	360	1.47%	666	1.51%
Two or more	144	0.73%	131	0.53%	275	0.62%
Other/Unknown	1,185	6.04%	1,290	5.27%	2,475	5.61%
TOTAL	19,607	100.00%	24,493	100.00%	44,100	100.00%

NOTE: Students were counted in only one category based on their Race/Ethnicity selection. "Two or more" includes non-Hispanic students that selected more than one race category. Percents may not add to 100 due to rounding.

Source: Fall 12th Class Day Data

**Student Characteristics
Headcount by Gender and Full/Part-time Status
Fall 2010**

Gender	Full-time		Part-time		Total	
Male	5,892	51.15%	13,715	42.10%	19,607	44.46%
Female	5,627	48.85%	18,866	57.90%	24,493	55.54%
TOTAL	11,519	100.00%	32,581	100.00%	44,100	100.00%

**Student Characteristics
Headcount by Race/Ethnicity and Full/Part-time Status
Fall 2010**

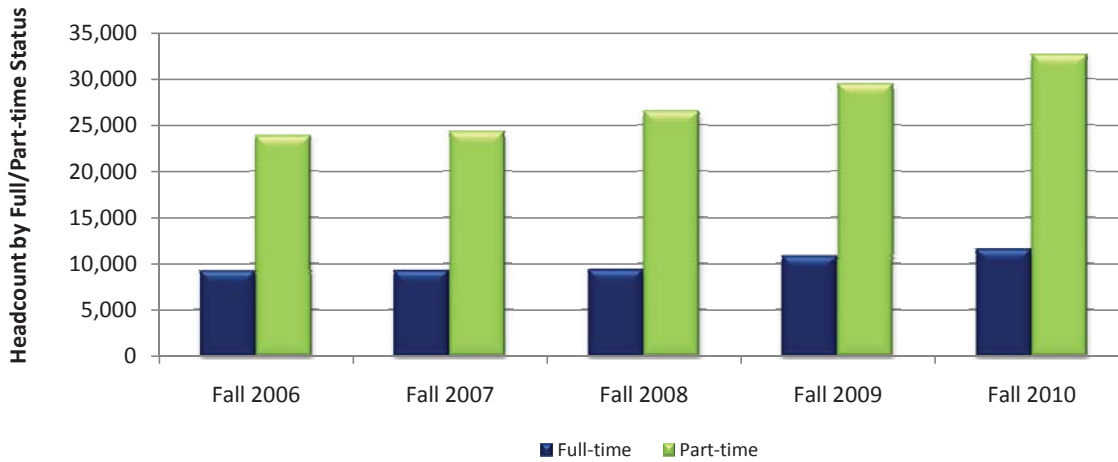
Race/Ethnicity	Full-time		Part-time		Total	
White	6,349	55.12%	16,882	51.82%	23,231	52.68%
Black	762	6.62%	2,977	9.14%	3,739	8.48%
Hispanic	2,573	22.34%	8,517	26.14%	11,090	25.15%
Asian	632	5.49%	1,527	4.69%	2,159	4.90%
Hawaiian/Pacific Islander	14	0.12%	22	0.07%	36	0.08%
Am. Indian/Alaskan Native	121	1.05%	308	0.95%	429	0.97%
Non-Resident Alien	261	2.27%	405	1.24%	666	1.51%
Two or more	98	0.85%	177	0.54%	275	0.62%
Other/Unknown	709	6.16%	1,766	5.42%	2,475	5.61%
TOTAL	11,519	100.00%	32,581	100.00%	44,100	100.00%

NOTE: Students were counted in only one category based on their Race/Ethnicity selection. "Two or more" includes non-Hispanic students that selected more than one race category. Percents may not add to 100 due to rounding.

Source: Fall 12th Class Day Data

Student Characteristics
Headcount by Full/Part-time Status
Fall 2006 - 2010

	Fall 2006	Fall 2007	Fall 2008	Fall 2009	Fall 2010	06-10 % chg
FULL-TIME STUDENTS¹						
Headcount	9,218	9,232	9,328	10,815	11,519	24.96%
% of Total	27.90%	27.55%	26.06%	26.87%	26.12%	
Average Hours Attempted	13.00	13.06	13.03	12.98	13.01	0.08%
PART-TIME STUDENTS²						
Headcount	23,821	24,276	26,470	29,433	32,581	36.77%
% of Total	72.10%	72.45%	73.94%	73.13%	73.88%	
Average Hours Attempted	6.00	6.05	6.06	6.08	6.16	2.67%
TOTAL HEADCOUNT	33,039	33,508	35,798	40,248	44,100	33.48%



¹ Full-time students are those enrolled in 12 or more semester credit hours
² Part-time students are those enrolled in less than 12 semester credit hours.

NOTE: Percents may not add to 100 due to rounding.

Source: Fall 12th Class Day Data

**Student Characteristics
Headcount by Day/Evening Classification
Fall 2006 - 2010**

Classification	Fall 2006	Fall 2007	Fall 2008	Fall 2009	Fall 2010	06-10 % chg
Day	15,927	16,089	17,279	19,088	21,124	32.63%
% of Total	48.21%	48.02%	48.27%	47.43%	47.90%	
Evening	4,640	4,319	4,322	4,741	4,858	4.70%
% of Total	14.04%	12.89%	12.07%	11.78%	11.02%	
Distance Learning	2,569	2,926	3,018	3,275	3,390	31.96%
% of Total	7.78%	8.73%	8.43%	8.14%	7.69%	
Day & Evening	6,023	6,155	6,547	7,780	8,640	43.45%
% of Total	18.23%	18.37%	18.29%	19.33%	19.59%	
Day & Distance Learning	2,211	2,232	2,523	3,064	3,452	56.13%
% of Total	6.69%	6.66%	7.05%	7.61%	7.83%	
Evening & Distance Learning	866	953	1,103	1,161	1,328	53.35%
% of Total	2.62%	2.84%	3.08%	2.88%	3.01%	
Day & Evening & Distance Learning	700	761	808	1,017	1,149	64.14%
% of Total	2.12%	2.27%	2.26%	2.53%	2.61%	
Non-identifiable	103	73	198	122	159	54.37%
% of Total	0.31%	0.22%	0.55%	0.30%	0.36%	
Total	33,039	33,508	35,798	40,248	44,100	33.48%

NOTE: Classifications are mutually exclusive. Day students are enrolled in courses that begin before 5:30 PM and evening students are enrolled in courses that begin at or after 5:30 PM. The "Non-identifiable" category includes self-paced courses and courses without designated meeting times. Percents may not add to 100 due to rounding.

Source: Fall 12th Class Day Data

Headcount by Region and Zip Code
Fall 2006 - 2010

Region	Zip Code	Fall 2006	Fall 2007	Fall 2008	Fall 2009	Fall 2010	06-10 % chg
Austin/Travis County, Central							
Austin	78701	127	109	114	120	152	19.69%
Austin	78703	369	342	351	350	354	-4.07%
Austin	78705	918	949	940	1,052	1,098	19.61%
Austin	78712	0	1	0	0	0	.
Austin	78751	515	480	499	506	493	-4.27%
Austin	78752	349	329	359	362	376	7.74%
Austin	78756	190	193	185	198	208	9.47%
Austin	78757	556	522	499	538	543	-2.34%
Total		3,024	2,925	2,947	3,126	3,224	6.61%
% of Grand Total		9.15%	8.73%	8.23%	7.77%	7.31%	
Austin/Travis County, East							
Austin	78702	460	480	531	613	648	40.87%
Austin	78721	182	194	235	277	315	73.08%
Austin	78722	185	187	173	160	172	-7.03%
Austin	78723	533	507	541	658	718	34.71%
Total		1,360	1,368	1,480	1,708	1,853	36.25%
% of Grand Total		4.12%	4.08%	4.13%	4.24%	4.20%	
Austin/Travis County, North							
Austin	78727	763	751	740	853	867	13.63%
Austin	78728	327	337	403	498	597	82.57%
Austin	78758	1,381	1,444	1,391	1,555	1,577	14.19%
Total		2,471	2,532	2,534	2,906	3,041	23.07%
% of Grand Total		7.48%	7.56%	7.08%	7.22%	6.90%	
Austin/Travis County, Northwest							
Austin	78726	312	304	335	352	417	33.65%
Austin	78730	120	98	112	141	135	12.50%
Austin	78731	501	503	461	541	564	12.57%
Austin	78750	439	463	525	598	685	56.04%
Austin	78759	930	975	944	1,030	1,145	23.12%
Total		2,302	2,343	2,377	2,662	2,946	27.98%
% of Grand Total		6.97%	6.99%	6.64%	6.61%	6.68%	

NOTE: Headcount based on zip code data as reported and entered in the ACC database. Zip code regions are based on definitions developed by ACC administration.

Source: Fall 12th Class Day Data

Headcount by Region and Zip Code (continued)
Fall 2006 - 2010

Region	Zip Code	Fall 2006	Fall 2007	Fall 2008	Fall 2009	Fall 2010	06-10 % chg
Austin/Travis County, South							
Manchaca	78652	115	88	108	97	103	-10.43%
Austin	78704	1,237	1,134	1,229	1,276	1,347	8.89%
Austin	78745	1,791	1,756	1,674	1,909	1,985	10.83%
Austin	78748	1,121	1,166	1,251	1,439	1,658	47.90%
Total		4,264	4,144	4,262	4,721	5,093	19.44%
% of Grand Total		12.91%	12.37%	11.91%	11.73%	11.55%	
Austin/Travis County, Southeast							
Del Valle	78617	264	265	286	325	402	52.27%
Austin	78719	26	30	28	34	40	53.85%
Austin	78741	2,114	2,006	2,013	2,057	2,186	3.41%
Austin	78742	14	18	15	21	17	21.43%
Austin	78744	883	869	948	1,017	1,257	42.36%
Austin	78747	225	259	333	427	449	99.56%
Total		3,526	3,447	3,623	3,881	4,351	23.40%
% of Grand Total		10.67%	10.29%	10.12%	9.64%	9.87%	
Austin/Travis County, Southwest							
Austin	78735	259	257	282	334	350	35.14%
Austin	78736	234	240	240	255	250	6.84%
Austin	78739	296	328	348	333	340	14.86%
Austin	78746	353	355	322	385	362	2.55%
Austin	78749	1,044	1,064	1,046	1,071	1,062	1.72%
Total		2,186	2,244	2,238	2,378	2,364	8.14%
% of Grand Total		6.62%	6.70%	6.25%	5.91%	5.36%	
Bastrop County¹							
Bastrop	78602	179	225	243	287	252	40.78%
Cedar Creek	78612	93	110	139	144	177	90.32%
Elgin	78621	168	183	214	194	272	61.90%
McDade	78650	14	8	9	10	11	-21.43%
Paige	78659	25	17	12	22	24	-4.00%
Red Rock	78662	27	23	22	30	27	0.00%
Rosanky	78953	7	7	9	12	9	28.57%
Smithville	78957	50	65	53	58	57	14.00%
Total		563	638	701	757	829	47.25%
% of Grand Total		1.70%	1.90%	1.96%	1.88%	1.88%	

¹ These numbers do not represent total enrollment for the county due to zip codes that span more than one county.

NOTE: Headcount based on zip code data as reported and entered in the ACC database. Zip code regions are based on definitions developed by ACC administration.

Source: Fall 12th Class Day Data

Headcount by Region and Zip Code (continued)
Fall 2006 - 2010

Region	Zip Code	Fall 2006	Fall 2007	Fall 2008	Fall 2009	Fall 2010	06-10 % chg
Blanco County¹							
Blanco	78606	36	28	27	33	43	19.44%
Hye	78635	3	0	2	1	1	-66.67%
Johnson City	78636	33	38	27	36	47	42.42%
Round Mountain	78663	8	9	8	6	7	-12.50%
Total		80	75	64	76	98	22.50%
% of Grand Total		0.24%	0.22%	0.18%	0.19%	0.22%	
Burnet County²							
Bertram	78605	11	17	11	22	18	63.64%
Briggs	78608	0	2	1	2	0	.
Burnet	78611	22	21	13	26	18	-18.18%
Marble Falls	78654	42	36	35	24	36	-14.29%
Total		75	76	60	74	72	-4.00%
% of Grand Total		0.23%	0.23%	0.17%	0.18%	0.16%	
Caldwell County¹							
Dale	78616	54	72	76	85	96	77.78%
Lockhart	78644	227	215	252	265	299	31.72%
Luling	78648	39	55	73	53	71	82.05%
Martindale	78655	34	24	20	28	30	-11.76%
Maxwell	78656	27	22	23	26	22	-18.52%
Total		381	388	444	457	518	35.96%
% of Grand Total		1.15%	1.16%	1.24%	1.14%	1.17%	
Cedar Park/Leander							
Cedar Park	78613	1,466	1,602	1,742	2,040	2,135	45.63%
Leander	78641	874	981	1,111	1,218	1,383	58.24%
Liberty Hill	78642	133	142	146	181	179	34.59%
Total		2,473	2,725	2,999	3,439	3,697	49.49%
% of Grand Total		7.49%	8.13%	8.38%	8.54%	8.38%	

¹ These numbers do not represent total enrollment for the county due to zip codes that span more than one county.

² Excludes the territory within the Florence, Granger, Hutto, Taylor, Thrall, Waelder, and Gonzales ISDs.

NOTE: Headcount based on zip code data as reported and entered in the ACC database. Zip code regions are based on definitions developed by ACC administration.

Source: Fall 12th Class Day Data

Headcount by Region and Zip Code (continued)
Fall 2006 - 2010

Region	Zip Code	Fall 2006	Fall 2007	Fall 2008	Fall 2009	Fall 2010	06-10 % chg
Georgetown/North Williamson County¹							
Florence	76527	15	18	14	27	22	46.67%
Granger	76530	8	9	14	10	7	-12.50%
Jarrell	76537	43	41	55	67	73	69.77%
Georgetown	78626	226	221	271	280	382	69.03%
Georgetown	78628	369	406	376	395	425	15.18%
Georgetown	78633	0	11	90	124	167	.
Total		661	706	820	903	1,076	62.78%
% of Grand Total		2.00%	2.11%	2.29%	2.24%	2.44%	
Gillespie County²							
Doss	78618	2	5	0	1	3	50.00%
Fredericksburg	78624	120	110	141	161	206	71.67%
Harper	78631	34	31	25	34	30	-11.76%
Stonewall	78671	3	0	5	1	8	166.67%
Willow City	78675	0	1	1	2	1	.
Total		159	147	172	199	248	55.97%
% of Grand Total		0.48%	0.44%	0.48%	0.49%	0.56%	
Gonzales County¹							
Leesville	78122	1	3	2	1	0	-100.00%
Nixon	78140	12	22	14	20	21	75.00%
Smiley	78159	6	5	1	3	4	-33.33%
Cost	78614	3	1	4	1	3	0.00%
Gonzales	78629	16	14	6	10	7	-56.25%
Waelder	78959	0	0	2	2	0	.
Total		38	45	29	37	35	-7.89%
% of Grand Total		0.12%	0.13%	0.08%	0.09%	0.08%	

¹ Excludes the territory within the Florence, Granger, Hutto, Taylor, Thrall, Waelder, and Gonzales ISDs.

² These numbers do not represent total enrollment for the county due to zip codes that span more than one county.

NOTE: Headcount based on zip code data as reported and entered in the ACC database. Zip code regions are based on definitions developed by ACC administration.

Source: Fall 12th Class Day Data

**Headcount by Region and Zip Code (continued)
Fall 2006 - 2010**

Region	Zip Code	Fall 2006	Fall 2007	Fall 2008	Fall 2009	Fall 2010	06-10 % chg
Hays County¹							
Buda	78610	223	254	303	320	396	77.58%
Driftwood	78619	19	21	30	39	36	89.47%
Dripping Springs	78620	136	157	192	195	190	39.71%
Kyle	78640	323	394	438	515	611	89.16%
San Marcos	78666	648	699	691	729	766	18.21%
San Marcos	78667	19	11	14	31	22	15.79%
Wimberley	78676	123	190	142	149	190	54.47%
Austin	78737	175	169	209	220	225	28.57%
Total		1,666	1,895	2,019	2,198	2,436	46.22%
% of Grand Total		5.04%	5.66%	5.64%	5.46%	5.52%	
Manor/East Travis County							
Manor	78653	258	309	370	390	397	53.88%
Austin	78724	225	246	276	352	430	91.11%
Austin	78725	105	115	132	150	165	57.14%
Total		588	670	778	892	992	68.71%
% of Grand Total		1.78%	2.00%	2.17%	2.22%	2.25%	
Pflugerville/Northeast Travis County							
Pflugerville	78660	778	873	991	1,198	1,283	64.91%
Austin	78753	1,003	1,008	1,044	1,204	1,305	30.11%
Austin	78754	287	317	370	396	465	62.02%
Total		2,068	2,198	2,405	2,798	3,053	47.63%
% of Grand Total		6.26%	6.56%	6.72%	6.95%	6.92%	

¹ These numbers do not represent total enrollment for the county due to zip codes that span more than one county.

NOTE: Headcount based on zip code data as reported and entered in the ACC database. Zip code regions are based on definitions developed by ACC administration.

Source: Fall 12th Class Day Data

Headcount by Region and Zip Code (continued)
Fall 2006 - 2010

Region	Zip Code	Fall 2006	Fall 2007	Fall 2008	Fall 2009	Fall 2010	06-10 % chg
Round Rock							
Round Rock	78664	952	1,013	1,163	1,280	1,505	58.09%
Round Rock	78665	0	27	307	647	875	.
Round Rock	78681	584	603	846	1,119	1,363	133.39%
Austin	78717	358	357	432	588	590	64.80%
Austin	78729	474	544	645	834	897	89.24%
Total		2,368	2,544	3,393	4,468	5,230	120.86%
% of Grand Total		7.17%	7.59%	9.48%	11.10%	11.86%	
Taylor/Hutto/East Williamson County¹							
Taylor	76574	26	36	33	55	71	173.08%
Thrall	76578	3	2	6	4	5	66.67%
Coupland	78615	5	5	12	8	11	120.00%
Hutto	78634	118	171	182	229	293	148.31%
Total		152	214	233	296	380	150.00%
% of Grand Total		0.46%	0.64%	0.65%	0.74%	0.86%	
West Travis County							
Leander	78645	147	144	107	142	143	-2.72%
Spicewood	78669	60	53	68	78	71	18.33%
Austin	78732	114	148	136	172	217	90.35%
Austin	78733	77	81	84	94	94	22.08%
Austin	78734	201	181	214	209	230	14.43%
Austin	78738	93	109	117	144	134	44.09%
Total		692	716	726	839	889	28.47%
% of Grand Total		2.09%	2.14%	2.03%	2.08%	2.02%	
Other/Unknown							
		1,942	1,468	1,494	1,433	1,675	-13.75%
Total		1,942	1,468	1,494	1,433	1,675	-13.75%
% of Grand Total		5.88%	4.38%	4.17%	3.56%	3.80%	
GRAND TOTAL		33,039	33,508	35,798	40,248	44,100	33.48%

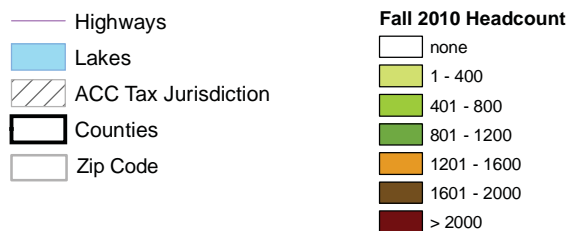
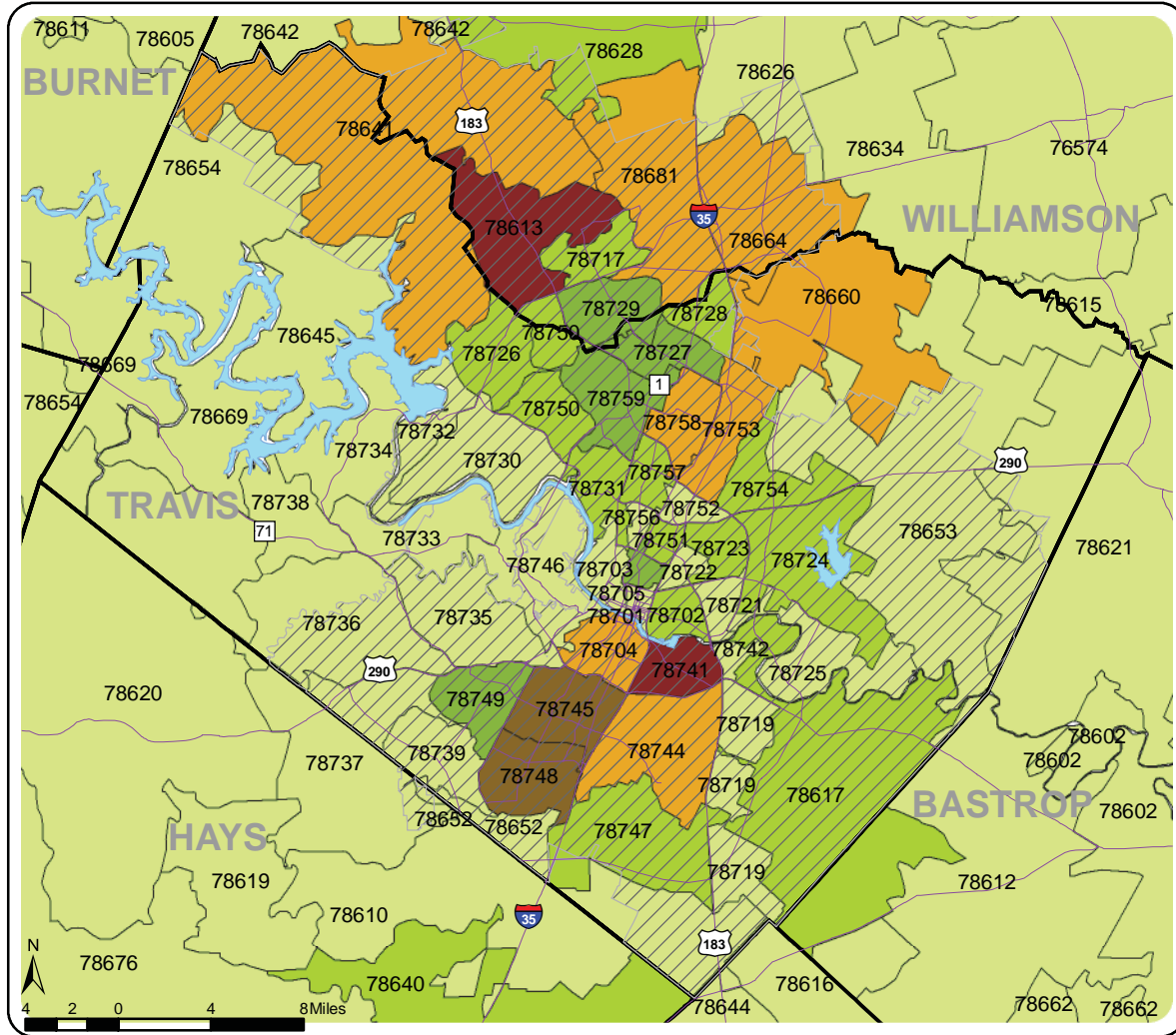
¹ Excludes the territory within the Florence, Granger, Hutto, Taylor, Thrall, Waelder, and Gonzales ISDs.

NOTE: Headcount based on zip code data as reported and entered in the ACC database. Zip code regions are based on definitions developed by ACC administration.

Source: Fall 12th Class Day Data

Austin Community College District Headcount by Zip Code Map Fall 2010

The shaded areas represent the zip code boundaries for data shown on the previous pages.



NOTE: Headcount based on zip code data as reported and entered in the ACC database.

Source: Fall 12th Class Day Data

STUDENT DEMOGRAPHICS

Headcount by Zip Code Fall 2006 - 2010

Zip Code	Region	Fall 2006	Fall 2007	Fall 2008	Fall 2009	Fall 2010	06-10 % chg
76527	Florence	15	18	14	27	22	46.67%
76530	Granger	8	9	14	10	7	-12.50%
76537	Jarrell	43	41	55	67	73	69.77%
76574	Taylor	26	36	33	55	71	173.08%
76578	Thrall	3	2	6	4	5	66.67%
78122	Leesville	1	3	2	1	0	-100.00%
78140	Nixon	12	22	14	20	21	75.00%
78159	Smiley	6	5	1	3	4	-33.33%
78602	Bastrop	179	225	243	287	252	40.78%
78605	Bertram	11	17	11	22	18	63.64%
78606	Blanco	36	28	27	33	43	19.44%
78608	Briggs	0	2	1	2	0	.
78610	Buda	223	254	303	320	396	77.58%
78611	Burnet	22	21	13	26	18	-18.18%
78612	Cedar Creek	93	110	139	144	177	90.32%
78613	Cedar Park	1,466	1,602	1,742	2,040	2,135	45.63%
78614	Cost	3	1	4	1	3	0.00%
78615	Coupland	5	5	12	8	11	120.00%
78616	Dale	54	72	76	85	96	77.78%
78617	Del Valle	264	265	286	325	402	52.27%
78618	Doss	2	5	0	1	3	50.00%
78619	Driftwood	19	21	30	39	36	89.47%
78620	Dripping Springs	136	157	192	195	190	39.71%
78621	Elgin	168	183	214	194	272	61.90%
78624	Fredericksburg	120	110	141	161	206	71.67%
78626	Georgetown	226	221	271	280	382	69.03%
78628	Georgetown	369	406	376	395	425	15.18%
78629	Gonzales	16	14	6	10	7	-56.25%
78631	Harper	34	31	25	34	30	-11.76%
78633	Georgetown	0	11	90	124	167	.
78634	Hutto	118	171	182	229	293	148.31%
78635	Hye	3	0	2	1	1	-66.67%
78636	Johnson City	33	38	27	36	47	42.42%
78640	Kyle	323	394	438	515	611	89.16%
78641	Leander	874	981	1,111	1,218	1,383	58.24%
78642	Liberty Hill	133	142	146	181	179	34.59%
78644	Lockhart	227	215	252	265	299	31.72%
78645	Leander	147	144	107	142	143	-2.72%

¹ Excludes the territory within the Florence, Granger, Hutto, Taylor, Thrall, Waelder, and Gonzales ISDs.

² These numbers do not represent total enrollment for the county due to zip codes that span more than one county.

NOTE: Headcount based on zip code data as reported and entered in the ACC database. Zip code regions are based on definitions developed by ACC administration.

Source: Fall 12th Class Day Data

Headcount by Zip Code (continued)
Fall 2006 - 2010

Zip Code	Region	Fall 2006	Fall 2007	Fall 2008	Fall 2009	Fall 2010	06-10 % chg	
78648	Luling	Caldwell County ¹	39	55	73	53	71	82.05%
78650	McDade	Bastrop County ¹	14	8	9	10	11	-21.43%
78652	Manchaca	Austin/Travis County, South	115	88	108	97	103	-10.43%
78653	Manor	Manor/East Travis County	258	309	370	390	397	53.88%
78654	Marble Falls	Burnet County ²	42	36	35	24	36	-14.29%
78655	Martindale	Caldwell County ¹	34	24	20	28	30	-11.76%
78656	Maxwell	Caldwell County ¹	27	22	23	26	22	-18.52%
78659	Paige	Bastrop County ¹	25	17	12	22	24	-4.00%
78660	Pflugerville	Pflugerville/Northeast Travis County	778	873	991	1,198	1,283	64.91%
78662	Red Rock	Bastrop County ¹	27	23	22	30	27	0.00%
78663	Round Mountain	Blanco County ¹	8	9	8	6	7	-12.50%
78664	Round Rock	Round Rock	952	1,013	1,163	1,280	1,505	58.09%
78665	Round Rock	Round Rock	0	27	307	647	875	.
78666	San Marcos	Hays County ¹	648	699	691	729	766	18.21%
78667	San Marcos	Hays County ¹	19	11	14	31	22	15.79%
78669	Spicewood	West Travis County	60	53	68	78	71	18.33%
78671	Stonewall	Gillespie County ¹	3	0	5	1	8	166.67%
78675	Willow City	Gillespie County ¹	0	1	1	2	1	.
78676	Wimberley	Hays County ¹	123	190	142	149	190	54.47%
78681	Round Rock	Round Rock	584	603	846	1,119	1,363	133.39%
78701	Austin	Austin/Travis County, Central	127	109	114	120	152	19.69%
78702	Austin	Austin/Travis County, East	460	480	531	613	648	40.87%
78703	Austin	Austin/Travis County, Central	369	342	351	350	354	-4.07%
78704	Austin	Austin/Travis County, South	1,237	1,134	1,229	1,276	1,347	8.89%
78705	Austin	Austin/Travis County, Central	918	949	940	1,052	1,098	19.61%
78712	Austin	Austin/Travis County, Central	0	1	0	0	0	.
78717	Austin	Round Rock	358	357	432	588	590	64.80%
78719	Austin	Austin/Travis County, Southeast	26	30	28	34	40	53.85%
78721	Austin	Austin/Travis County, East	182	194	235	277	315	73.08%
78722	Austin	Austin/Travis County, East	185	187	173	160	172	-7.03%
78723	Austin	Austin/Travis County, East	533	507	541	658	718	34.71%
78724	Austin	Manor/East Travis County	225	246	276	352	430	91.11%
78725	Austin	Manor/East Travis County	105	115	132	150	165	57.14%
78726	Austin	Austin/Travis County, Northwest	312	304	335	352	417	33.65%
78727	Austin	Austin/Travis County, North	763	751	740	853	867	13.63%
78728	Austin	Austin/Travis County, North	327	337	403	498	597	82.57%
78729	Austin	Round Rock	474	544	645	834	897	89.24%

¹ These numbers do not represent total enrollment for the county due to zip codes that span more than one county.

² Excludes the territory within the Florence, Granger, Hutto, Taylor, Thrall, Waelder, and Gonzales ISDs.

NOTE: Headcount based on zip code data as reported and entered in the ACC database. Zip code regions are based on definitions developed by ACC administration.

Source: Fall 12th Class Day Data

Headcount by Zip Code (continued)
Fall 2006 - 2010

Zip Code		Region	Fall 2006	Fall 2007	Fall 2008	Fall 2009	Fall 2010	06-10 % chg
78730	Austin	Austin/Travis County, Northwest	120	98	112	141	135	12.50%
78731	Austin	Austin/Travis County, Northwest	501	503	461	541	564	12.57%
78732	Austin	West Travis County	114	148	136	172	217	90.35%
78733	Austin	West Travis County	77	81	84	94	94	22.08%
78734	Austin	West Travis County	201	181	214	209	230	14.43%
78735	Austin	Austin/Travis County, Southwest	259	257	282	334	350	35.14%
78736	Austin	Austin/Travis County, Southwest	234	240	240	255	250	6.84%
78737	Austin	Hays County ¹	175	169	209	220	225	28.57%
78738	Austin	West Travis County	93	109	117	144	134	44.09%
78739	Austin	Austin/Travis County, Southwest	296	328	348	333	340	14.86%
78741	Austin	Austin/Travis County, Southeast	2,114	2,006	2,013	2,057	2,186	3.41%
78742	Austin	Austin/Travis County, Southeast	14	18	15	21	17	21.43%
78744	Austin	Austin/Travis County, Southeast	883	869	948	1,017	1,257	42.36%
78745	Austin	Austin/Travis County, South	1,791	1,756	1,674	1,909	1,985	10.83%
78746	Austin	Austin/Travis County, Southwest	353	355	322	385	362	2.55%
78747	Austin	Austin/Travis County, Southeast	225	259	333	427	449	99.56%
78748	Austin	Austin/Travis County, South	1,121	1,166	1,251	1,439	1,658	47.90%
78749	Austin	Austin/Travis County, Southwest	1,044	1,064	1,046	1,071	1,062	1.72%
78750	Austin	Austin/Travis County, Northwest	439	463	525	598	685	56.04%
78751	Austin	Austin/Travis County, Central	515	480	499	506	493	-4.27%
78752	Austin	Austin/Travis County, Central	349	329	359	362	376	7.74%
78753	Austin	Pflugerville/Northeast Travis County	1,003	1,008	1,044	1,204	1,305	30.11%
78754	Austin	Pflugerville/Northeast Travis County	287	317	370	396	465	62.02%
78756	Austin	Austin/Travis County, Central	190	193	185	198	208	9.47%
78757	Austin	Austin/Travis County, Central	556	522	499	538	543	-2.34%
78758	Austin	Austin/Travis County, North	1,381	1,444	1,391	1,555	1,577	14.19%
78759	Austin	Austin/Travis County, Northwest	930	975	944	1,030	1,145	23.12%
78953	Rosanky	Bastrop County ¹	7	7	9	12	9	28.57%
78957	Smithville	Bastrop County ¹	50	65	53	58	57	14.00%
78959	Waelder	Gonzales County ²	0	0	2	2	0	.
		Other/Unknown	1,942	1,468	1,494	1,433	1,675	-13.75%
		GRAND TOTAL	33,039	33,508	35,798	40,248	44,100	33.48%

¹ These numbers do not represent total enrollment for the county due to zip codes that span more than one county.

² Excludes the territory within the Florence, Granger, Hutto, Taylor, Thrall, Waelder, and Gonzales ISDs.

NOTE: Headcount based on zip code data as reported and entered in the ACC database. Zip code regions are based on definitions developed by ACC administration.

Source: Fall 12th Class Day Data

Declared Majors
Fall 2006 - 2010

Associate of Arts (AA)

	Fall 2006	Fall 2007	Fall 2008	Fall 2009	Fall 2010	06-10 % chg
Anthropology	120	97	124	139	182	51.67%
Art	527	599	616	641	703	33.40%
Communications ¹	71	75	0	13	14	-80.28%
Creative Writing	46	34	42	87	125	171.74%
Dance	80	75	82	85	116	45.00%
Drama	122	136	127	143	161	31.97%
Economics	148	127	173	150	168	13.51%
English	338	346	390	420	445	31.66%
Foreign Lanuage						
Arabic	.	.	6	9	22	.
Chinese	.	.	6	10	12	.
French	27	32	40	48	41	51.85%
General ¹	3	4	4	3	4	33.33%
German	18	16	19	17	20	11.11%
Japanese	33	41	46	61	56	69.70%
Latin	1	1	4	6	8	700.00%
Russian	8	11	6	11	11	37.50%
Spanish	124	131	146	159	165	33.06%
General Studies in Liberal Arts	2,838	2,654	3,279	3,169	3,139	10.61%
Early Childhood Education ¹	368	213	177	93	53	-85.60%
Grade 4-8 Certification ¹	80	43	33	23	12	-85.00%
Geographic Information Systems	2	11	13	24	19	850.00%
Geography	36	34	43	42	43	19.44%
Government	207	197	237	240	258	24.64%
History	313	273	350	368	404	29.07%
Journalism	250	268	280	336	363	45.20%
Music	346	414	437	487	532	53.76%
Performing Arts ¹	8	10	7	4	4	-50.00%
Philosophy	76	62	91	102	100	31.58%
Psychology	845	871	1,006	1,084	1,210	43.20%
Radio-Television-Film	403	376	425	441	457	13.40%
Social Work	206	189	248	303	393	90.78%
Sociology	118	111	140	166	188	59.32%
Speech	60	49	59	80	86	43.33%
Undeclared	669	700	474	572	690	3.14%
TOTAL	8,491	8,200	9,130	9,536	10,204	20.17%

¹ Program is no longer active, but students already in the pipeline may be allowed to complete the degree plan.

Source: Fall 12th Class Day Data

STUDENT DEMOGRAPHICS

Declared Majors Fall 2006 - 2010

Associate of Arts in Teaching (AAT)

	Fall 2006	Fall 2007	Fall 2008	Fall 2009	Fall 2010	06-10 % chg
Education						
4-8 Grade Levels	91	179	307	375	286	214.29%
8-12 Grade Levels	133	254	370	486	550	313.53%
EC-4 Grade Levels - Early Childhood Specialization ¹	193	451	607	616	154	-20.21%
EC-6 Grade Levels - Early Childhood Specialization	.	.	.	215	888	.
TOTAL	417	884	1,284	1,692	1,878	350.36%

Associate of Science (AS)

	Fall 2006	Fall 2007	Fall 2008	Fall 2009	Fall 2010	06-10 % chg
Archaeology	.	.	4	25	28	.
Biology	542	517	611	717	817	50.74%
Business Administration	1,632	1,592	2,027	2,109	2,162	32.48%
Chemistry	122	118	160	177	167	36.89%
Computer Science						
Computer Science	585	554	549	600	630	7.69%
Computer Information Systems	.	.	9	43	99	.
Engineering	677	708	791	900	1,032	52.44%
Environmental Studies	56	54	84	118	139	148.21%
General Studies in Science	219	240	333	365	427	94.98%
Geology	67	52	52	74	67	0.00%
Health & Kinesiology						
Health	228	216	242	290	302	32.46%
Kinesiology	337	261	358	427	429	27.30%
Mathematics	140	132	177	169	224	60.00%
Physical Sciences ¹	11	8	6	5	4	-63.64%
Physics - Astronomy	70	82	92	101	106	51.43%
Pre-Dental	154	141	129	128	124	-19.48%
Pre-Medical	536	665	653	762	821	53.17%
Pre-Pharmacy	222	236	266	280	314	41.44%
Pre-Veterinary	139	123	138	201	225	61.87%
Undeclared	343	347	204	244	221	-35.57%
TOTAL	6,080	6,046	6,885	7,735	8,338	37.14%

¹ Program is no longer active, but students already in the pipeline may be allowed to complete the degree plan.

NOTE: A "." means that the program did not exist that semester.

Source: Fall 12th Class Day Data

Declared Majors
Fall 2006 - 2010

Associate of Applied Science (AAS)

	Fall 2006	Fall 2007	Fall 2008	Fall 2009	Fall 2010	06-10 % chg
Architectural and Engineering Computer Aided Design						
Architectural Specialization	226	282	284	305	285	26.11%
Electronic Graphics Specialization	31	26	27	32	25	-19.35%
Interdisciplinary Specialization	10	15	15	20	20	100.00%
Mechanical Specialization	44	49	55	67	69	56.82%
Accounting	71	75	52	38	33	-53.52%
Accounting Specialist	185	132	252	294	328	77.30%
Accounting Technician	73	199	122	146	157	115.07%
Professional Accountant ¹	212	90	105	89	50	-76.42%
American Sign Language - Interpreter	5	.
Auto Body Collision and Refinishing	.	.	1	15	34	.
Automotive Technology	122	122	129	184	243	99.18%
Biotechnology	56	53	55	85	99	76.79%
Building Construction Technology						
Construction Management	63	60	86	103	123	95.24%
Business & Technical Communication	.	13	35	58	49	.
Business & Government Communications	64	99	105	120	92	43.75%
Technical Communications	83	78	93	93	97	16.87%
Business Management ¹	5	3	2	.	.	.
Child Development	173	150	157	150	168	-2.89%
Commercial Art ¹	16	14	17	11	5	-68.75%
Commercial Music Management	192	182	227	241	255	32.81%
Computer Information Technology	58	56	49	34	27	-53.45%
Computer Programming	259	256	275	284	328	26.64%
Computer Programming-Software Testing	4	.
Local Area Network Systems-Network Administration	112	116	98	116	123	9.82%
Local Area Network Systems-Security Administration	.	.	31	50	87	.
Microcomputer Application Support	31	25	25	15	24	-22.58%
Microcomputer Applications - User & Desktop Support	.	3	8	11	14	.
Web Programming Specialization	1	10	18	36	37	3600.00%
Criminal Justice	6	1	3	1	1	-83.33%
Corrections	166	158	168	189	220	32.53%
Law Enforcement	411	383	496	611	760	84.91%
Culinary Arts	104	115	134	149	226	117.31%
Dental Hygiene	146	198	301	380	410	180.82%
Electronics and Advanced Technology						
Automation,Robotics and Control Technology	19	20	20	17	19	0.00%
Bioinstrumentation Technology Specialization	3	3	4	19	13	333.33%
Networking/Computer Electronics	26	24	26	30	33	26.92%
Electronic Technology ¹	1	2

¹ Program is no longer active, but students already in the pipeline may be allowed to complete the degree plan.

NOTE: A "." means that the program did not exist that semester.

Source: Fall 12th Class Day Data

**Declared Majors
Fall 2006 - 2010**

Associate of Applied Science (AAS) (continued)

	Fall 2006	Fall 2007	Fall 2008	Fall 2009	Fall 2010	06-10 % chg
Electronics and Advanced Technology (continued)						
Engineering	108	112	123	109	139	28.70%
Nanoelectronics Manufacturing Technology Spec.	1	.
Power Technology Specialization	2	14	19	19	25	1150.00%
Renewable Energy Specialization	.	.	13	88	125	.
Semiconductor Manufacturing Technology	31	24	20	17	17	-45.16%
Technician	70	52	62	72	66	-5.71%
Utility Lineman	6	.
Emergency Medical Services Professions	130	130	143	159	174	33.85%
Tech Prep ¹	2	2
Engineering Design Graphics ¹	15	10	8	10	9	-40.00%
Environmental Technology	19	21	27	29	40	110.53%
Financial Management and Mortgage Banking	38	27	41	22	30	-21.05%
Fire Protection Technology	74	62	97	132	142	91.89%
Game Development						
Game & Visualization Programming Specialization	.	.	8	29	58	.
Game Art Specialization	.	.	8	34	64	.
Game Design Specialization	.	.	11	55	101	.
Geographic Information Systems	.	.	.	1	9	.
Health Information Technology (formerly Medical Coding)	.	.	.	18	75	.
Heating, Air Conditioning, & Refrigeration Technology	40	49	62	78	120	200.00%
Hospitality Management	1	.	2	.	.	.
Baccalaureate Prep Specialization	9	8	15	15	23	155.56%
Food & Lodging Specialization	13	8	8	16	24	84.62%
Hotel & Lodging Specialization	22	13	13	18	17	-22.73%
Hotel Specialization ¹	.	3	3	2	2	.
Meeting and Event Planning Specialization	23	22	30	34	33	43.48%
Restaurant Specialization ¹	.	1	1	.	.	.
Travel & Tourism	6	10	17	15	18	200.00%
Human Services						
Addictions Counseling	57	40	68	74	127	122.81%
General Human Services	89	81	82	92	100	12.36%
Interpreter Preparation Program	59	74	103	110	114	93.22%
Therapeutic Recreation	20	19	18	25	38	90.00%
International Business	19	46	80	111	94	394.74%
Jewelry	15	18	27	32	35	133.33%
Land Surveying Technology/Geomatics	17	25	24	22	21	23.53%
Management	307	297	326	328	379	23.45%
Marketing	234	232	240	201	218	-6.84%
Fashion Merchandising	108	109	96	97	116	7.41%

¹ Program is no longer active, but students already in the pipeline may be allowed to complete the degree plan.

NOTE: A "." means that the program did not exist that semester.

Source: Fall 12th Class Day Data

Declared Majors
Fall 2006 - 2010

Associate of Applied Science (AAS) (continued)

	Fall 2006	Fall 2007	Fall 2008	Fall 2009	Fall 2010	06-10 % chg
Medical Laboratory Technology	72	82	77	99	133	84.72%
Nursing						
Nursing Mobility Track	40	76	135	139	164	310.00%
Nursing Traditional Track	476	921	2,391	3,233	3,712	679.83%
Occupational Therapy Assistant	45	53	68	93	144	220.00%
Office Administration ¹	17	15	11	3	3	-82.35%
Administrative Assistant	35	34	54	81	78	122.86%
Legal Administrative Assistant	19	19	20	20	25	31.58%
Medical Administrative Assistant	42	39	47	71	90	114.29%
Paralegal	155	146	163	182	199	28.39%
Personal Fitness Trainer	16	19	43	56	65	306.25%
Photographic Technology						
Advertising-Fashion Focus	61	57	70	85	90	47.54%
People-Portrait Focus	61	53	62	75	86	40.98%
Photography & Graphic Arts ¹	1	1	1	.	.	.
Professional Photography ¹	5	5	3	3	2	-60.00%
Physical Fitness Technology ¹	3	12	6	1	2	-33.33%
Physical Therapist Assistant	212	191	211	299	378	78.30%
Printing & Desktop Publishing Production ¹	16	13	.	1	1	-93.75%
Quality Assurance Management & Technology ¹	.	2
Radiology	388	406	427	477	493	27.06%
Real Estate	96	115	111	90	122	27.08%
Sonography						
Diagnostic Cardiac Sonography	25	30	54	63	89	256.00%
Diagnostic Medical Sonography	72	95	209	292	304	322.22%
Surgical Technology	81	74	93	111	149	83.95%
Undeclared	305	342	223	247	421	38.03%
Visual Communication Design	61	47	30	22	24	-60.66%
2D Animation Specialization	25	25	38	38	52	108.00%
3D Animation Specialization	111	112	133	98	105	-5.41%
3D Modeling Specialization	.	.	9	18	23	.
Graphic Arts Technology Specialization	.	6	25	26	25	.
Graphic Design Specialization	128	146	217	239	277	116.41%
Interactive Design Specialization ¹	23	32	40	50	69	200.00%
Motion Graphics Specialization	3	.
Web & Interactive Design Specialization	2	.
Welding Technology	.	2	6	3	4	.
Art Metals	40	28	28	41	42	5.00%
Code Welding	40	34	38	58	81	102.50%
TOTAL	7,168	7,753	10,313	12,371	14,480	102.01%

¹ Program is no longer active, but students already in the pipeline may be allowed to complete the degree plan.

NOTE: A "." means that the program did not exist that semester.

Source: Fall 12th Class Day Data

Declared Majors
Fall 2006 - 2010

Certificates

	Fall 2006	Fall 2007	Fall 2008	Fall 2009	Fall 2010	06-10 % chg
Accounting						
Accounting Clerk	103	119	141	145	152	47.57%
Professional Accountant	39	55	82	167	241	517.95%
American Sign Language Interpreter	10	.
Architectural and Engineering Computer Aided Design						
Architectural and Engineering CAD	2	14	65	84	98	4800.00%
Civil CAD Specialization	.	.	4	7	16	.
Integrated Circuit Layout & Design Specialization	5	12	26	26	18	260.00%
Auto Body Collision and Refinishing						
Auto Body Collision Repair	.	.	5	12	22	.
Auto Body Refinishing	.	.	1	7	9	.
Automotive Technology						
Automotive Drive Train Specialist	8	6	3	6	5	-37.50%
Automotive Engine Performance Specialist	24	29	38	34	48	100.00%
Automotive Heating & Air Conditioning	13	8	9	10	11	-15.38%
Automotive Technician	87	85	123	141	177	103.45%
Automotive Technology Advanced Skills Certificate ¹	.	1	5	5	3	.
Automotive Technology Enhanced Skills Certificate	8	9	12	17	21	162.50%
Brake & Suspension	6	3	7	10	6	0.00%
Marine Engine Repair	5	4	6	7	7	40.00%
Motorcycle Repair	16	14	13	11	12	-25.00%
Small Engine Repair	1	5	8	5	4	300.00%
Biotechnology	29	42	38	46	71	144.83%
Building Construction Technology						
Cabinetry & Interior Finishes ¹	3	3	3	3	.	.
Carpentry	38	24	29	35	38	0.00%
Construction Manager	12	24	33	31	22	83.33%
Woodworking	16	17	17	21	25	56.25%
Business and Technical Communications						
Business & Government Communications	203	312	341	373	334	64.53%
Technical Communications	103	149	135	157	131	27.18%
Child Development	250	336	306	319	369	47.60%
Enhanced Skills	25	35	23	22	19	-24.00%
Computer Information Technology						
Computer Information Technology Database	67	77	78	103	107	59.70%
Computer Programming-C++ Track	47	43	45	52	43	-8.51%
Computer Programming-Java Track	25	30	36	45	37	48.00%
Computer Programming-Software Testing					2	
Local Area Network Systems Network Administration	25	19	21	17	21	-16.00%
Microcomputer Applications-User and Desktop Support	.	.	.	2	6	.
Web Developer Specialist	27	46	34	42	34	25.93%
Criminal Justice - Texas Peace Officer Sequence	125	157	142	179	167	33.60%

¹ Program is no longer active, but students already in the pipeline may be allowed to complete the degree plan.

NOTE: A "." means that the program did not exist that semester.

Source: Fall 12th Class Day Data

Declared Majors
Fall 2006 - 2010

Certificates (continued)

	Fall 2006	Fall 2007	Fall 2008	Fall 2009	Fall 2010	06-10 % chg
Culinary Arts	50	70	70	100	108	116.00%
Culinarian	10	11	20	10	19	90.00%
Pastry Art	31	.
Diagnostic Medical Imaging						
Advanced Technical Certificate	8	7	3	.	.	.
Diagnostic Cardiac Sonography ¹	.	1
Diagnostic Medical Sonography ¹	.	.	.	4	2	.
Vascular Technology Enhanced Skills Certificate	.	2	2	8	13	.
Digital Publishing & Graphics Technology ¹	5	5
Electronics and Advanced Technologies						
Automation, Robotics and Controls Technology	7	9	9	8	9	28.57%
Bioinstrumentation Technology Specialization	.	.	.	2	1	.
Networking/Computer Electronics	20	24	32	26	18	-10.00%
Electronic Technology ¹	.	1
Engineering Technology	57	97	95	123	129	126.32%
Power Technology	1	3	8	5	7	600.00%
Renewable Energy Specialization	.	.	1	20	15	.
Semiconductor Manufacturing Technology Specialist	11	10	9	6	3	-72.73%
Technician	22	24	22	37	20	-9.09%
Utility Lineman	1	.
Emergency Medical Services						
EMT Intermediate Certificate	13	22	22	25	24	84.62%
EMT Paramedic Certificate	29	36	34	42	39	34.48%
Engineering Design Graphics ¹	50	47	26	18	14	-72.00%
Environmental Science and Technology	1	.	7	16	25	2400.00%
Financial Management and Mortgage Banking						
Financial Management ¹	5	1
Mortgage Banking	.	10	7	5	6	.
Fire Protection	55	76	67	86	74	34.55%
Game Development						
Game Art	.	.	1	2	7	.
Game Design	.	.	.	13	36	.
Geographic Information Systems					16	
Heating, Air Conditioning & Refrigeration	63	47	53	89	85	34.92%
Hospitality Management	26	33	31	28	45	73.08%
Meeting Planning	20	14	12	14	27	35.00%
Travel & Tourism	18	29	33	38	42	133.33%
Human Services ¹	2	1	2	2		-100.00%
Addictions Counseling	26	36	44	48	61	134.62%
Addictions Counseling in the Criminal Justice System	.	.	6	8	8	.
American Sign Language Studies	38	57	55	65	64	68.42%
Deaf Services	6	.
Interpreter Preparation Program	19	24	29	34	28	47.37%
Therapeutic Recreation	14	27	25	36	43	207.14%

¹ Program is no longer active, but students already in the pipeline may be allowed to complete the degree plan.

NOTE: A "." means that the program did not exist that semester.

Source: Fall 12th Class Day Data

Declared Majors
Fall 2006 - 2010

Certificates (continued)

	Fall 2006	Fall 2007	Fall 2008	Fall 2009	Fall 2010	06-10 % chg
International Business	78	55	66	60	63	-19.23%
Jewelry	22	23	32	24	24	9.09%
Land Surveying Technology/Geomatics Management ¹	10	7	9	12	13	30.00%
Administrative Management	9	5	4	4	1	-88.89%
International Business ¹	83	106	121	104	93	12.05%
Legal Assistant	.	7	6	5	4	.
Management Specialties Leadership	68	66	72	51	27	-60.29%
Small Business Management	13	18	27	21	24	84.62%
Marketing	86	87	68	66	79	-8.14%
Basic Skills	1	1	1	.	.	.
Enhanced Skills Certificate	96	128	112	116	153	59.38%
Fashion Merchandising	26	30	22	15	10	-61.54%
Medical Coding Specialist	54	53	41	38	31	-42.59%
Nursing (Vocational)	45	67	62	80	75	66.67%
Office Administration	463	494	511	612	703	51.84%
Administrative Assistant	32	34	28	43	44	37.50%
Enhanced Skills ¹	.	.	1	1	1	.
Legal Administrative Assistant Specialization	12	17	18	17	24	100.00%
Medical Administrative Assistant Specialization	19	14	4	18	42	121.05%
Medical Office Assistant Specialization	28	36	41	50	54	92.86%
Office Assistant	16	21	27	21	33	106.25%
Software Applications Specialist	3	6	3	2	9	200.00%
Paralegal	.	.	2	18	43	.
Personal Fitness Trainer	44	38	52	38	42	-4.55%
Fitness Specialist	.	.	.	19	28	.
Pharmacy Technician	93	120	120	141	166	78.49%
Photographic Technology	.	1	2	2	13	.
Digital Assistant	73	80	63	77	99	35.62%
Photographic Artist	10	5	3	1	.	.
Photographic Assistant ¹	15	33	36	15	11	-26.67%
Photojournalism ¹	3	3	4	1	2	-33.33%
Physical Fitness Technology ¹	1
Quality Management & Technology Certificate ¹
Radiology	12	10	18	14	9	-25.00%
Cardiovascular Interventional Radiology	2	2	1	2	2	0.00%
Computerized Tomography ¹	1	3	2	8	5	400.00%
Magnetic Resonance Imaging ¹	37	63	73	87	97	162.16%
Radio-Television-Film	14	15	15	25	29	107.14%
Film/Production Video	.	5	5	1	2	.
Film/Video Production Management	.	4	1	3	.	.
Industrial Video ¹
Industrial Video Production Management ¹

¹ Program is no longer active, but students already in the pipeline may be allowed to complete the degree plan.

NOTE: A "." means that the program did not exist that semester.

Source: Fall 12th Class Day Data

Declared Majors
Fall 2006 - 2010

Certificates (continued)

	Fall 2006	Fall 2007	Fall 2008	Fall 2009	Fall 2010	06-10 % chg
Real Estate	143	146	128	111	96	-32.87%
Surgical Technology	24	27	34	23	41	70.83%
Undeclared	917	1,334	1,224	1,324	1,351	47.33%
Visual Communication Design						
2D Animation	10	20	21	16	18	80.00%
3D Animation	27	37	33	22	32	18.52%
3D Modeling	.	.	1	10	8	.
Applied Multimedia Technology ¹	11	15	6	5	.	.
Graphic Arts Technology	.	.	15	21	30	.
Graphic Design	53	70	94	84	81	52.83%
Illustration	.	.	1	5	7	.
Interactive Design ¹	7	12	8	18	18	157.14%
Prepress ¹	21	20	4	3	1	-95.24%
Web Specialization	12	18	14	15	10	-16.67%
Welding Technology	1	2	2	.	.	.
Art Metals	20	26	20	36	33	65.00%
Inspection	9	18	15	19	11	22.22%
Jewelry Fabrication ¹	.	2	1	1	1	.
Metal Sculpture	16	16	16	17	13	-18.75%
Pipe Welding	11	8	9	8	12	9.09%
Plate Welding	16	13	20	23	17	6.25%
Ultrahigh Purity Piping	1	1	1	2	2	100.00%
TOTAL	4,650	5,847	5,895	6,634	7,149	53.74%

¹ Program is no longer active, but students already in the pipeline may be allowed to complete the degree plan.

NOTE: A "." means that the program did not exist that semester.

Source: Fall 12th Class Day Data

Declared Majors
Fall 2006 - 2010

	Other					
	Fall 2006	Fall 2007	Fall 2008	Fall 2009	Fall 2010	06-10 % chg
No Major Data	128	.	.	214	241	88.28%
Pre-Nursing Mobility Track Prerequisites	144	122	22	4	20	-86.11%
Pre-Nursing Traditional Track Prerequisites	1,450	983	160	8	71	-95.10%
Pre-Sonography Prerequisites	140	82	14	1	7	-95.00%
Undeclared						
Intend to Transfer	2,503	1,921	999	830	766	-69.40%
Major Not Offered	322	327	285	377	370	14.91%
Non-Degree Seeking	303	274	226	210	183	-39.60%
Taking Courses for Self Improvement	390	335	322	636	393	0.77%
TOTAL	5,380	4,044	2,028	2,280	2,051	-61.88%

Declared Majors Summary
Fall 2006 - 2010

	Fall 2006	Fall 2007	Fall 2008	Fall 2009	Fall 2010	06-10 % chg
Associates of Arts	8,491	8,200	9,130	9,536	10,204	20.17%
Associates of Arts in Teaching	417	884	1,284	1,692	1,878	350.36%
Associates of Science	6,080	6,046	6,885	7,735	8,338	37.14%
Associates of Applied Science	7,168	7,754	10,313	12,371	14,480	102.01%
Certificates	4,650	5,847	5,895	6,634	7,149	53.74%
Other	6,233	4,777	2,291	2,280	2,051	-67.09%
TOTAL	33,039	33,508	35,798	40,248	44,100	33.48%

High School Concurrent Enrollment by School District
Fall 2006 - 2010

School District	Fall 2006	Fall 2007	Fall 2008	Fall 2009	Fall 2010	06-10 % Chg
Austin ISD	469	396	439	507	472	0.64%
Bastrop ISD	68	67	99	94	78	14.71%
Blanco ISD	22	15	21	25	32	45.45%
Del Valle ISD	24	18	43	43	60	150.00%
Dripping Springs ISD	42	51	92	66	40	-4.76%
Eanes ISD	36	22	21	18	24	-33.33%
Elgin ISD	17	17	44	12	47	176.47%
Fredericksburg ISD	34	36	49	38	49	44.12%
Georgetown ISD	146	129	158	191	260	78.08%
Harper ISD	31	32	20	29	30	-3.23%
Hays CISD	78	95	122	132	185	137.18%
Jarrell ISD	34	18	34	45	44	29.41%
Johnson City ISD	12	14	14	14	0	-100.00%
Lago Vista ISD	30	35	8	32	36	20.00%
Lake Travis ISD	86	79	79	95	88	2.33%
Leander ISD	200	285	288	309	500	150.00%
Liberty Hill ISD	89	97	96	110	107	20.22%
Lockhart ISD	126	140	157	165	193	53.17%
Luling ISD	29	40	48	15	12	-58.62%
Manor ISD	20	37	44	32	54	170.00%
Nixon-Smilely ISD	18	29	17	24	24	33.33%
Pflugerville ISD	65	53	121	198	274	321.54%
Prairie Lea ISD	1	4	1	0	12	1100.00%
Round Rock ISD	99	167	194	233	159	60.61%
San Marcos CISD	46	62	51	103	113	145.65%
Smithville ISD	5	5	4	2	0	-100.00%
Wimberley ISD	22	97	45	52	77	250.00%
Other ¹	361	376	441	490	536	48.48%
TOTAL	2,210	2,416	2,750	3,074	3,506	58.64%

¹ Other includes home-schooled students, students enrolled in private schools, and students with no high school identified.

NOTE: Concurrently enrolled students are enrolled in high school (as juniors and seniors) and in college. These students receive college credit and may receive high school graduation credit for the classes they take at ACC.

Source: Fall 12th Class Day Data

**Student Characteristics
First-time in College Students
Fall 2006 - 2010**

		Fall 2006	Fall 2007	Fall 2008	Fall 2009	Fall 2010	06-10 % chg
Student Headcount		4,565	4,283	4,859	5,435	5,903	29.31%
Residency	In-District	2,954 64.71%	2,736 63.88%	3,438 70.76%	3,922 72.16%	4,228 71.62%	43.13%
	Out-of-District	1,427 31.26%	1,373 32.06%	1,228 25.27%	1,332 24.51%	1,477 25.02%	3.50%
	Out-of-State/International	147 3.22%	121 2.83%	127 2.61%	139 2.56%	156 2.64%	6.12%
	Other/Unknown ¹	37 0.81%	53 1.24%	66 1.36%	42 0.77%	42 0.71%	13.51%
Gender	Male	2,263 49.57%	2,088 48.75%	2,463 50.69%	2,753 50.65%	2,989 50.64%	32.08%
	Female	2,302 50.43%	2,195 51.25%	2,396 49.31%	2,682 49.35%	2,914 49.36%	26.59%
Race/Ethnicity (Unduplicated - students were counted in only one category) ²	White	2,352 51.52%	2,335 54.52%	2,581 53.12%	2,738 50.38%	2,403 40.71%	2.17%
	Black	412 9.03%	410 9.57%	416 8.56%	616 11.33%	553 9.37%	34.22%
	Hispanic	1,451 31.79%	1,219 28.46%	1,504 30.95%	1,686 31.02%	1,543 26.14%	6.34%
	Asian	162 3.55%	185 4.32%	243 5.00%	198 3.64%	155 2.63%	-4.32%
	Hawaiian/Pacific Islander	14 0.24%	.
	Am. Indian/Alaskan Native	47 1.03%	48 1.12%	46 0.95%	37 0.68%	53 0.90%	12.77%
	Non-Resident Alien	67 1.47%	48 1.12%	27 0.56%	59 1.09%	144 2.44%	114.93%
	Two or more	67 1.14%	.
Other/Unknown	74 1.62%	38 0.89%	42 0.86%	101 1.86%	971 16.45%	1212.16%	
Race/Ethnicity (Duplicated - students may be counted in more than one category) ³	White	DATA NOT AVAILABLE				2,746 46.52%	.
	Black					604 10.23%	.
	Hispanic					1,543 26.14%	.
	Asian					172 2.91%	.
	Hawaiian/Pacific Islander					24 0.41%	.
	Am. Indian/Alaskan Native					162 2.74%	.
	Non-Resident Alien					144 2.44%	.
Other/Unknown	971 16.45%	.					
Age	16 and Under	14 0.31%	15 0.35%	9 0.19%	14 0.26%	20 0.34%	42.86%
	17	161 3.53%	165 3.85%	143 2.94%	157 2.89%	174 2.95%	8.07%
	18	2,142 46.92%	2,138 49.92%	2,376 48.90%	2,388 43.94%	2,625 44.47%	22.55%
	19-21	1,240 27.16%	1,111 25.94%	1,249 25.70%	1,436 26.42%	1,401 23.73%	12.98%
	22-24	341 7.47%	294 6.86%	338 6.96%	445 8.19%	494 8.37%	44.87%
	25-30	339 7.43%	293 6.84%	375 7.72%	502 9.24%	582 9.86%	71.68%
	31-35	143 3.13%	95 2.22%	162 3.33%	213 3.92%	269 4.56%	88.11%
	36-50	165 3.61%	147 3.43%	176 3.62%	247 4.54%	286 4.84%	73.33%
	51-64	18 0.39%	20 0.47%	30 0.62%	30 0.55%	48 0.81%	166.67%
	65 and over	2 0.04%	2 0.05%	1 0.02%	2 0.04%	4 0.07%	100.00%
	Unknown	0 0.00%	3 0.07%	0 0.00%	1 0.02%	0 0.00%	.
	Average Age	20.88	20.62	20.95	21.49	21.79	4.36%

¹ Other/Unknown includes students with tuition exemptions and waivers.

² Unduplicated Race/Ethnicity - students were counted in only one category based on their Race/Ethnicity selection. "Two or more" includes non-Hispanic students that selected more than one race category.

³ Duplicated Race/Ethnicity - students may be counted in more than one category based on their Race/Ethnicity selection with one exception: if students selected "Non-Resident Alien," they were counted only as "Non-Resident Alien" (regardless of whether they selected an additional race/ethnicity).

NOTE: First-time in college students have never attended college or any other postsecondary institution and are not reported as first-time-entering college until they have completed their high school work.

Source: Fall 12th Class Day Data

**Student Characteristics
Developmental Education - Reading
Fall 2006 - 2010**

		Fall 2006	Fall 2007	Fall 2008	Fall 2009	Fall 2010	06-10 % chg
Student Headcount		1,101	1,064	1,124	1,224	1,435	30.34%
Residency	In-District	789 71.66%	716 67.29%	835 74.29%	933 76.23%	1,115 77.70%	41.32%
	Out-of-District	259 23.52%	306 28.76%	270 24.02%	261 21.32%	277 19.30%	6.95%
	Out-of-State/International	37 3.36%	32 3.01%	17 1.51%	30 2.45%	38 2.65%	2.70%
	Other/Unknown ¹	16 1.45%	10 0.94%	2 0.18%	0 0.00%	5 0.35%	-68.75%
Gender	Male	457 41.51%	427 40.13%	447 39.77%	492 40.20%	657 45.78%	43.76%
	Female	644 58.49%	637 59.87%	677 60.23%	732 59.80%	778 54.22%	20.81%
Student Status	Part-time	1,043 94.73%	999 93.89%	1,067 94.93%	1,148 93.79%	1,368 95.33%	31.16%
	Full-time ²	58 5.27%	65 6.11%	57 5.07%	76 6.21%	67 4.67%	15.52%
Race/Ethnicity (Unduplicated - students were counted in only one category) ³	White	321 29.16%	312 29.32%	349 31.05%	316 25.82%	270 18.82%	-15.89%
	Black	218 19.80%	226 21.24%	223 19.84%	327 26.72%	367 25.57%	68.35%
	Hispanic	457 41.51%	425 39.94%	467 41.55%	492 40.20%	505 35.19%	10.50%
	Asian	51 4.63%	56 5.26%	50 4.45%	44 3.59%	30 2.09%	-41.18%
	Hawaiian/Pacific Islander	1 0.07%	.
	Am. Indian/Alaskan Native	6 0.54%	11 1.03%	9 0.80%	6 0.49%	10 0.70%	66.67%
	Non-Resident Alien	27 2.45%	15 1.41%	5 0.44%	9 0.74%	35 2.44%	29.63%
	Two or more Other/Unknown	10 0.70%	.
Race/Ethnicity (Duplicated - students may be counted in more than one category) ⁴	White	DATA NOT AVAILABLE				330 23.00%	.
	Black					382 26.62%	.
	Hispanic					505 35.19%	.
	Asian					32 2.23%	.
	Hawaiian/Pacific Islander					1 0.07%	.
	Am. Indian/Alaskan Native					33 2.30%	.
	Non-Resident Alien					35 2.44%	.
	Other/Unknown					207 14.43%	.
Age	16 and Under	3 0.27%	2 0.19%	3 0.27%	0 0.00%	3 0.21%	0.00%
	17	26 2.36%	24 2.26%	36 3.20%	21 1.72%	29 2.02%	11.54%
	18	366 33.24%	383 36.00%	412 36.65%	391 31.94%	388 27.04%	6.01%
	19-21	400 36.33%	383 36.00%	386 34.34%	398 32.52%	487 33.94%	21.75%
	22-24	110 9.99%	98 9.21%	98 8.72%	145 11.85%	167 11.64%	51.82%
	25-30	103 9.36%	77 7.24%	87 7.74%	119 9.72%	149 10.38%	44.66%
	31-35	35 3.18%	37 3.48%	41 3.65%	50 4.08%	88 6.13%	151.43%
	36-50	52 4.72%	53 4.98%	53 4.72%	86 7.03%	104 7.25%	100.00%
	51-64	5 0.45%	6 0.56%	8 0.71%	14 1.14%	18 1.25%	260.00%
	65 and over	1 0.09%	1 0.09%	0 0.00%	0 0.00%	2 0.14%	100.00%
	Unknown	0 0.00%	0 0.00%	0 0.00%	0 0.00%	0 0.00%	.
	Average Age	21.63	21.57	21.48	22.68	23.26	7.54%

¹ Other/Unknown includes students with tuition exemptions and waivers.

² Full-time - 12 credit hours or more.

³ Unduplicated Race/Ethnicity - students were counted in only one category based on their Race/Ethnicity selection. "Two or more" includes non-Hispanic students that selected more than one race category.

⁴ Duplicated Race/Ethnicity- students may be counted in more than one category based on their Race/Ethnicity selection with one exception: if students selected "Non-Resident Alien," they were counted only as "Non-Resident Alien" (regardless of whether they selected an additional race/ethnicity).

NOTE: Unduplicated headcount of students who were enrolled in at least one Developmental Reading course. Percents may not add to 100 due to rounding.

Source: Fall 12th Class Day Data

**Student Characteristics
Developmental Education - Writing
Fall 2006 - 2010**

		Fall 2006	Fall 2007	Fall 2008	Fall 2009	Fall 2010	06-10 % chg
Student Headcount		673	667	704	811	958	42.35%
Residency	In-District	500 74.29%	464 69.57%	544 77.27%	620 76.45%	765 79.85%	53.00%
	Out-of-District	146 21.69%	182 27.29%	149 21.16%	177 21.82%	175 18.27%	19.86%
	Out-of-State/International	17 2.53%	18 2.70%	10 1.42%	12 1.48%	16 1.67%	-5.88%
	Other/Unknown ¹	10 1.49%	3 0.45%	1 0.14%	2 0.25%	2 0.21%	-80.00%
Gender	Male	335 49.78%	331 49.63%	344 48.86%	379 46.73%	482 50.31%	43.88%
	Female	338 50.22%	336 50.37%	360 51.14%	432 53.27%	476 49.69%	40.83%
Student Status	Part-time	606 90.04%	602 90.25%	652 92.61%	726 89.52%	872 91.02%	43.89%
	Full-time ²	67 9.96%	65 9.75%	52 7.39%	85 10.48%	86 8.98%	28.36%
Race/Ethnicity (Unduplicated - students were counted in only one category) ³	White	203 30.16%	220 32.98%	228 32.39%	237 29.22%	199 20.77%	-1.97%
	Black	117 17.38%	131 19.64%	153 21.73%	202 24.91%	262 27.35%	123.93%
	Hispanic	291 43.24%	250 37.48%	291 41.34%	318 39.21%	343 35.80%	17.87%
	Asian	28 4.16%	32 4.80%	26 3.69%	20 2.47%	21 2.19%	-25.00%
	Hawaiian/Pacific Islander	3 0.31%	.
	Am. Indian/Alaskan Native	4 0.59%	6 0.90%	1 0.14%	7 0.86%	5 0.52%	25.00%
	Non-Resident Alien	14 2.08%	12 1.80%	2 0.28%	6 0.74%	21 2.19%	50.00%
	Two or more Other/Unknown	6 0.63%	.
	16 2.38%	16 2.40%	3 0.43%	21 2.59%	98 10.23%	512.50%	
Race/Ethnicity (Duplicated - students may be counted in more than one category) ⁴	White	DATA NOT AVAILABLE				236 24.63%	.
	Black	DATA NOT AVAILABLE				266 27.77%	.
	Hispanic	DATA NOT AVAILABLE				343 35.80%	.
	Asian	DATA NOT AVAILABLE				22 2.30%	.
	Hawaiian/Pacific Islander	DATA NOT AVAILABLE				4 0.42%	.
	Am. Indian/Alaskan Native	DATA NOT AVAILABLE				16 1.67%	.
	Non-Resident Alien	DATA NOT AVAILABLE				21 2.19%	.
	Other/Unknown	DATA NOT AVAILABLE				98 10.23%	.
Age	16 and Under	1 0.15%	1 0.15%	0 0.00%	0 0.00%	2 0.21%	100.00%
	17	10 1.49%	10 1.50%	15 2.13%	14 1.73%	8 0.84%	-20.00%
	18	197 29.27%	191 28.64%	194 27.56%	191 23.55%	159 16.60%	-19.29%
	19-21	237 35.22%	237 35.53%	256 36.36%	300 36.99%	323 33.72%	36.29%
	22-24	83 12.33%	76 11.39%	72 10.23%	83 10.23%	107 11.17%	28.92%
	25-30	64 9.51%	54 8.10%	55 7.81%	74 9.12%	120 12.53%	87.50%
	31-35	26 3.86%	33 4.95%	35 4.97%	35 4.32%	79 8.25%	203.85%
	36-50	47 6.98%	51 7.65%	62 8.81%	93 11.47%	127 13.26%	170.21%
	51-64	8 1.19%	11 1.65%	15 2.13%	21 2.59%	30 3.13%	275.00%
	65 and over	0 0.00%	2 0.30%	0 0.00%	0 0.00%	3 0.31%	.
	Unknown	1 0.15%	1 0.15%	0 0.00%	0 0.00%	0 0.00%	-100.00%
	Average Age	22.67	23.22	23.40	24.26	26.09	15.09%

¹ Other/Unknown includes students with tuition exemptions and waivers.

² Full-time - 12 credit hours or more.

³ Unduplicated Race/Ethnicity - students were counted in only one category based on their Race/Ethnicity selection. "Two or more" includes non-Hispanic students that selected more than one race category.

⁴ Duplicated Race/Ethnicity - students may be counted in more than one category based on their Race/Ethnicity selection with one exception: if students selected "Non-Resident Alien," they were counted only as "Non-Resident Alien" (regardless of whether they selected an additional race/ethnicity).

NOTE: Unduplicated headcount of students who were enrolled in at least one Developmental Writing course. Percents may not add to 100 due to rounding.

Source: Fall 12th Class Day Data

**Student Characteristics
Developmental Education - Math
Fall 2006 - 2010**

		Fall 2006	Fall 2007	Fall 2008	Fall 2009	Fall 2010	06-10 % chg
Student Headcount		6,765	6,690	7,109	7,774	8,622	27.45%
Residency	In-District	4,760 70.36%	4,632 69.24%	5,400 75.96%	6,009 77.30%	6,717 77.91%	41.11%
	Out-of-District	1,771 26.18%	1,854 27.71%	1,518 21.35%	1,591 20.47%	1,688 19.58%	-4.69%
	Out-of-State/International	204 3.02%	169 2.53%	145 2.04%	150 1.93%	177 2.05%	-13.24%
	Other/Unknown ¹	30 0.44%	35 0.52%	46 0.65%	24 0.31%	40 0.46%	33.33%
Gender	Male	2,816 41.63%	2,718 40.63%	2,973 41.82%	3,249 41.79%	3,653 42.37%	29.72%
	Female	3,949 58.37%	3,972 59.37%	4,136 58.18%	4,525 58.21%	4,969 57.63%	25.83%
Student Status	Part-time	4,571 67.57%	4,539 67.85%	4,980 70.05%	5,351 68.83%	6,046 70.12%	32.27%
	Full-time ²	2,194 32.43%	2,151 32.15%	2,129 29.95%	2,423 31.17%	2,576 29.88%	17.41%
Race/Ethnicity (Unduplicated - students were counted in only one category) ³	White	3,334 49.28%	3,375 50.45%	3,495 49.16%	3,713 47.76%	3,661 42.46%	9.81%
	Black	770 11.38%	817 12.21%	892 12.55%	1,113 14.32%	1,176 13.64%	52.73%
	Hispanic	2,231 32.98%	2,081 31.11%	2,293 32.25%	2,542 32.70%	2,735 31.72%	22.59%
	Asian	176 2.60%	220 3.29%	222 3.12%	182 2.34%	184 2.13%	4.55%
	Hawaiian/Pacific Islander	14 0.16%	.
	Am. Indian/Alaskan Native	72 1.06%	61 0.91%	72 1.01%	66 0.85%	83 0.96%	15.28%
	Non-Resident Alien	90 1.33%	65 0.97%	43 0.60%	45 0.58%	126 1.46%	40.00%
	Two or more Other/Unknown	92 1.36%	71 1.06%	92	113 1.45%	593 6.88%	544.57%
Race/Ethnicity (Duplicated - students may be counted in more than one category) ⁴	White	DATA NOT AVAILABLE				3,956 45.88%	.
	Black	DATA NOT AVAILABLE				1,222 14.17%	.
	Hispanic	DATA NOT AVAILABLE				2,735 31.72%	.
	Asian	DATA NOT AVAILABLE				193 2.24%	.
	Hawaiian/Pacific Islander	DATA NOT AVAILABLE				21 0.24%	.
	Am. Indian/Alaskan Native	DATA NOT AVAILABLE				175 2.03%	.
	Non-Resident Alien Other/Unknown	DATA NOT AVAILABLE				126 1.46%	.
		DATA NOT AVAILABLE				593 6.88%	.
Age	16 and Under	13 0.19%	6 0.09%	4 0.06%	10 0.13%	13 0.15%	0.00%
	17	85 1.26%	108 1.61%	82 1.15%	87 1.12%	87 1.01%	2.35%
	18	1,149 16.98%	1,225 18.31%	1,279 17.99%	1,229 15.81%	1,206 13.99%	4.96%
	19-21	2,435 35.99%	2,345 35.05%	2,462 34.63%	2,543 32.71%	2,549 29.56%	4.68%
	22-24	970 14.34%	975 14.57%	986 13.87%	1,106 14.23%	1,287 14.93%	32.68%
	25-30	1,107 16.36%	1,012 15.13%	1,141 16.05%	1,346 17.31%	1,561 18.10%	41.01%
	31-35	421 6.22%	427 6.38%	492 6.92%	610 7.85%	786 9.12%	86.70%
	36-50	519 7.67%	532 7.95%	561 7.89%	728 9.36%	973 11.29%	87.48%
	51-64	64 0.95%	51 0.76%	99 1.39%	113 1.45%	155 1.80%	142.19%
	65 and over	2 0.03%	7 0.10%	3 0.04%	2 0.03%	5 0.06%	150.00%
	Unknown	0 0.00%	2 0.03%	0 0.00%	0 0.00%	0 0.00%	.
	Average Age	23.85	23.82	24.11	24.76	25.60	7.34%

¹ Other/Unknown includes students with tuition exemptions and waivers.

² Full-time - 12 credit hours or more.

³ Unduplicated Race/Ethnicity - students were counted in only one category based on their Race/Ethnicity selection. "Two or more" includes non-Hispanic students that selected more than one race category.

⁴ Duplicated Race/Ethnicity - students may be counted in more than one category based on their Race/Ethnicity selection with one exception: if students selected "Non-Resident Alien," they were counted only as "Non-Resident Alien" (regardless of whether they selected an additional race/ethnicity).

NOTE: Unduplicated headcount of students who were enrolled in at least one Developmental Math course. Percents may not add to 100 due to rounding.

Source: Fall 12th Class Day Data

**Student Characteristics
Developmental Education - Other¹
Fall 2006 - 2010**

		Fall 2006	Fall 2007	Fall 2008	Fall 2009	Fall 2010	06-10 % chg
Student Headcount		1,160	1,291	1,303	1,466	1,656	42.76%
Residency	In-District	852 73.45%	893 69.17%	963 73.91%	1,098 74.90%	1,274 76.93%	49.53%
	Out-of-District	257 22.16%	340 26.34%	316 24.25%	325 22.17%	337 20.35%	31.13%
	Out-of-State/International	36 3.10%	35 2.71%	15 1.15%	37 2.52%	35 2.11%	-2.78%
	Other/Unknown ²	15 1.29%	23 1.78%	9 0.69%	6 0.41%	10 0.60%	-33.33%
Gender	Male	511 44.05%	548 42.45%	587 45.05%	653 44.54%	769 46.44%	50.49%
	Female	649 55.95%	743 57.55%	716 54.95%	813 55.46%	887 53.56%	36.67%
Student Status	Part-time	959 82.67%	1,064 82.42%	1,073 82.35%	1,205 82.20%	1,362 82.25%	42.02%
	Full-time ³	201 17.33%	227 17.58%	230 17.65%	261 17.80%	294 17.75%	46.27%
Race/Ethnicity (Unduplicated - students were counted in only one category) ⁴	White	456 39.31%	472 36.56%	512 39.29%	549 37.45%	466 28.14%	2.19%
	Black	184 15.86%	223 17.27%	215 16.50%	310 21.15%	347 20.95%	88.59%
	Hispanic	435 37.50%	483 37.41%	495 37.99%	513 34.99%	529 31.94%	21.61%
	Asian	38 3.28%	45 3.49%	41 3.15%	39 2.66%	22 1.33%	-42.11%
	Hawaiian/Pacific Islander	3 0.18%	.
	Am. Indian/Alaskan Native	7 0.60%	17 1.32%	10 0.77%	10 0.68%	12 0.72%	71.43%
	Non-Resident Alien	24 2.07%	25 1.94%	10 0.77%	15 1.02%	37 2.23%	54.17%
	Two or more	14 0.85%	.
Other/Unknown	16 1.38%	26 2.01%	20 1.53%	30 2.05%	226 13.65%	1312.50%	
Race/Ethnicity (Duplicated - students may be counted in more than one category) ⁵	White	DATA NOT AVAILABLE				545 32.91%	.
	Black	DATA NOT AVAILABLE				362 21.86%	.
	Hispanic	DATA NOT AVAILABLE				529 31.94%	.
	Asian	DATA NOT AVAILABLE				25 1.51%	.
	Hawaiian/Pacific Islander	DATA NOT AVAILABLE				3 0.18%	.
	Am. Indian/Alaskan Native	DATA NOT AVAILABLE				37 2.23%	.
	Non-Resident Alien	DATA NOT AVAILABLE				37 2.23%	.
Other/Unknown	DATA NOT AVAILABLE				226 13.65%	.	
Age	16 and Under	1 0.09%	1 0.08%	1 0.08%	0 0.00%	21 1.27%	2000.00%
	17	21 1.81%	28 2.17%	35 2.69%	25 1.71%	44 2.66%	109.52%
	18	327 28.19%	382 29.59%	396 30.39%	412 28.10%	387 23.37%	18.35%
	19-21	439 37.84%	487 37.72%	462 35.46%	533 36.36%	563 34.00%	28.25%
	22-24	137 11.81%	150 11.62%	129 9.90%	167 11.39%	184 11.11%	34.31%
	25-30	126 10.86%	126 9.76%	140 10.74%	159 10.85%	209 12.62%	65.87%
	31-35	46 3.97%	41 3.18%	68 5.22%	64 4.37%	102 6.16%	121.74%
	36-50	58 5.00%	66 5.11%	57 4.37%	86 5.87%	112 6.76%	93.10%
	51-64	5 0.43%	9 0.70%	15 1.15%	20 1.36%	31 1.87%	520.00%
	65 and over	0 0.00%	1 0.08%	0 0.00%	0 0.00%	3 0.18%	.
	Unknown	0 0.00%	0 0.00%	0 0.00%	0 0.00%	0 0.00%	.
Average Age	22.06	22.03	22.15	22.70	23.62	7.07%	

¹ Other includes human development and study skills.

² Other/Unknown includes students with tuition exemptions and waivers.

³ Full-time - 12 credit hours or more.

⁴ Unduplicated Race/Ethnicity - students were counted in only one category based on their Race/Ethnicity selection. "Two or more" includes non-Hispanic students that selected more than one race category.

⁵ Duplicated Race/Ethnicity - students may be counted in more than one category based on their Race/Ethnicity selection with one exception: if students selected "Non-Resident Alien," they were counted only as "Non-Resident Alien" (regardless of whether they selected an additional race/ethnicity).

NOTE: Unduplicated headcount of students who were enrolled in at least one Developmental Other¹ course. Percents may not add to 100 due to rounding.

Source: Fall 12th Class Day Data

THIS PAGE INTENTIONALLY LEFT BLANK