

Continuing Education

This section can be used for finding:

- *information about Continuing Education programs.*
- *organizations that offer service and training through community partnerships.*
- *demographic information on Continuing Education students.*
- *enrollment information for Continuing Education classes.*

Contents

Useful Terms.....	246
Overview.....	247
Academic Year Programs	248
Community Partnerships	249
Testing Partnerships	249
Student Characteristics	250
Annual Headcount by Region and Zip Code	251
Annual Headcount by Zip Code Map.....	256
Annual Headcount by Zip Code	257
Course Enrollment by Location	260
Course Enrollment by Program Area.....	261

Useful Terms

Headcount - the number of students enrolled in one or more courses. This number may be duplicated or unduplicated.

Enrollment - the number of students registered for courses.

Continuing Education Overview

Continuing Education programs at Austin Community College District are conducted in the following areas:

Business Assessment Center provides the Austin community with comprehensive coverage of professional testing services. BACT is aligned with numerous Testing Companies and educational institutions, both nationally and internationally, to administer educational, performance-based, and high stakes assessments for higher education, business, industry, and international agencies. The center has been recognized as a leader in the development and utilization of innovative techniques designed for management and security of the exams administered. BACT is the only GED Testing Center in a three-county area and adheres to the Testing standards of the National College Testing Association, Consortium of College Testing Centers..

Teaching and Learning Center offers courses for College and Career Readiness training for students and teachers; parenting classes; childcare training; ParaEducator training; teacher certification, and professional development. As part of the ACC Student Success Initiative, courses are added as needed to help local students and parents prepare for the future.

Community Programs provides training for those with a bachelor's degree and subject competency to become teachers in Texas. Candidates enter an internship as a first-year teacher and finish with a teaching certificate. Educator training is also available for professional development and additional certifications, training for instructional aides, online substitute teacher training, and childcare classes.

Interior Design Institute includes Floral Design, Landscape Design, and Horticulture. These programs offer premier training for individuals wanting to enter the specific industries.

Institute of Language and Culture provides a variety of language classes which focus on speaking skills in a language.

Personal Enrichment provides other programs that include recreational courses, arts and crafts, photography, financial seminars, State Theatre classes, Event and Wedding Planning, Assessment Test Preparation and many more.

Corporate Training Solutions provides a one-stop source for training solutions for business, industry, and governmental agencies. By collaborating with organizations to analyze learning needs, Corporate Training Solutions will tailor educational experiences that will develop employee talent and improve performance. Programs are flexible, on target, convenient and a value-added resource, making Corporate Training Solutions a partner in improved business results.

Workforce Development Center is designed to provide a wide range of training and educational opportunities for individuals getting started in the workplace, furthering their current careers, or working to meet licensure/certification requirements. The Center is made up of three Institutes that cover a wide range of industries.

Health Professions Institute provides entry-level training opportunities for individuals beginning their career in healthcare. The Health Professions Institute also provides continuing education opportunities for current healthcare professionals needing this education as part of their recertification, relicensure, and/or professional development.

High Technology Institute provides technology training through practical hands-on instruction for both new and experienced users. Courses range from computer fundamentals to web authoring, from software programming to AutoCAD training. The Technical Certification Programs include: Apple, ASQ, Cisco, Comp TIA, Fiber Optics, Google Android, Linux, Localization, Microsoft, PC Technician, Project Management, Video Game Development and more.

Business & Industry Institute provides training for those starting or transitioning to a new career, meeting professional continuing education requirements, or simply expanding upon their existing skills in a variety of industry specific program areas. Program areas include job entry training, business development, professional development, and professional continuing education.

Continuing Education Academic Year 2011 Programs

Teaching & Learning Center

- College & Career Readiness
- Tutors with Vision Certification
- Parenting & Childcare
- Teacher Certification
- ParaEducator Institute
- Professional Development for Teachers

Community Programs

- Acting
- Arts and Crafts
- Assessment Test Preparation
- Building Construction
- Driving Safety
- ESOL
- Event Planning
- Financial Programs
- Floral Design
- Home and Gardens
- Horticulture and Landscaping
- Music
- Personal Enrichment
- Photography
- Sports and Recreation
- Summer Programs
- Trips and Tours
- Wedding Institute
- Writing Institute

Corporate Training Solutions

- Contract Classes for Business, Industry, Organizations and Governmental Agencies

Workforce Development Center

• Health Professions Institute

- Advanced Skills
- Entry-Level Job Preparation
(e.g. Dental Assisting, Medical Assisting)
- Basic Certification/Licensure
(e.g. Nurse Aide, Massage Therapy)
- Life Saving (e.g. CPR, ACLS, PALS)
- Independent Study Courses
- Professional Continuing Education
(e.g. Nursing, Social Work)
- Special Certificates

• Business & Industry Institute

- Apprenticeship
- Job Preparation
(e.g. Truck Driving, Automotive, Child Care Dev.)
- Certification/Licensure (e.g. Real Estate, Home Inspection)
- Management and Supervision Courses
- Professional Continuing Education (e.g. Accounting)
- Renewable Energy
- Workplace Skills (e.g. Translator, Interpreter)

• High Technology Institute

- AutoCAD Training
- Classroom and Online Courses
- Computer Applications (e.g. Microsoft Office)
- Programming
- Project Management
- Technical Certifications (e.g. Microsoft, CISCO)
- Video Game Development
- Webmaster
- Wireless Technology

Community Partnerships

Continuing Education maintains partnerships with local business and industry, student support and employment agencies, and professional accrediting entities, to provide education and training that remains responsive and current to the community's needs. Partnerships include:

Academy of General Dentistry (AGD)	Oracle
American Heart Association (AHA)	Project Management Institute
American Institute of Architects	Seton Family of Hospitals
American Society for Quality (ASQ)	Skillpoint Alliance
Association of Contingency Planners	Society of Human Resource Management (SHRM)
Austin APICS	St. David's Healthcare
Austin Chapter of the Texas Assoc. Addiction Professionals	State Board for Educator Certification
Austin District Dental Hygienist's Society	State Theatre School of Acting
Austin Information Systems Security Association	Sun Microsystems
Austin Project Management Institute	Texas Board of Nurse Examiners
Austin Travis County Mental Health and Mental Retardation	Texas Board of Nursing Facility Administrators
Building Owners and Managers Association (BOMA)	Texas Commission on Alcoholism and Drug Abuse
Capital IDEA	Texas Commission on Environmental Quality
CISCO	Texas Department of Health Board of Massage
CompTIA	Texas Department of Human Services
Dental Assisting National Board	Texas Department of State Health Services (DSHS)
Entertech	Texas Education Agency
Harden Healthcare	Texas Notary Public Association
Information Systems Security Association (ISSA)	Texas Nurses Association
Insurance Institute of America	Texas Real Estate Commission
International Foundation of Employee Benefit Plans	Texas State Board of Public Accountancy
International Schools Professional Driver Training	Texas State Board of Social Work Examiners
Localization Advisory Board	Texas State Florist Association
Microsoft	Transportation Professionals of Central Texas
National Academies of Emergency Dispatch (NAED)	TX Certification Board of Alcohol & Drug Abuse Counselors
National Certification Council for Activity Professionals	U.S. Dept. of Labor-Bureau of Apprenticeship Training
National Executive Housekeepers Association (NEHA)	Workforce Solutions – Capital Area
National Fire Prevention Association	Workforce Solutions – Rural Capital Area
National Joint Apprenticeship and Training Committee	

Testing Partnerships

Business Assessment Center - Continuing Education is aligned with numerous national and international Testing Companies and Organizations in order to provide the Austin area with comprehensive coverage of professional testing services. Some of our associates include:

ACT	Kryterion
ACT WorkKeys	Law School Admissions Council
American Association of Colleges of Pharmacy (AACP)	Manufacturing Skill Standards Council
American Council on Education	Nat'l Institute for Certification in Engineering Technologies
Assessment Technologies Institute	North American Board of Certified Energy Practitioners
Castle Worldwide	Pearson VUE
Consortium of College Testing Centers	Pharmacy College Admission Council
Educational Testing Service	Prometric
Electrical Generator Systems Association	PROV Exam Services
General Educational Development Testing Service	Texas Education Agency
International English Language Testing System (IELTS)	University of Cambridge, Cambridge, United Kingdom
Iso-Quality Testing	

Source: Office of Continuing Education

**Continuing Education
Student Characteristics
Academic Year 2007 - 2011**

		AY 2007	AY 2008	AY 2009	AY 2010	AY 2011	07-11 % chg
Student Headcount		10,517	12,032	11,511	12,233	11,599	10.29%
Gender	Male	3,983 37.87%	5,035 41.85%	5,014 43.56%	5,636 46.07%	5,111 44.06%	28.32%
	Female	6,534 62.13%	6,997 58.15%	6,497 56.44%	6,597 53.93%	6,488 55.94%	-0.70%
Race/Ethnicity (Unduplicated - students were counted in only one category) ¹	White	6,055 57.57%	7,131 59.27%	6,940 60.29%	7,131 58.29%	6,754 58.23%	11.54%
	Black	963 9.16%	1,046 8.69%	908 7.89%	1,002 8.19%	986 8.50%	2.39%
	Hispanic	2,293 21.80%	2,583 21.47%	2,601 22.60%	2,719 22.23%	2,526 21.78%	10.16%
	Asian	693 6.59%	814 6.77%	754 6.55%	737 6.02%	717 6.18%	3.46%
	Hawaiian/Pacific Islander	.	.	.	15 0.12%	7 0.06%	.
	Am. Indian/Alaskan Native	55 0.52%	63 0.52%	56 0.49%	83 0.68%	97 0.84%	76.36%
	Non-Resident Alien	76 0.72%	88 0.73%	58 0.50%	116 0.95%	120 1.03%	57.89%
	Two or more Other/Unknown	. 382 3.63%	. 307 2.55%	. 194 1.69%	. 401 3.28%	. 348 3.00%	. -8.90%
Race/Ethnicity (Duplicated - students may be counted in more than one category) ²	White	NO DATA AVAILABLE			7,268 59.41%	7,006 60.40%	.
	Black	NO DATA AVAILABLE			1,017 8.31%	1,011 8.72%	.
	Hispanic	NO DATA AVAILABLE			2,719 22.23%	2,526 21.78%	.
	Asian	NO DATA AVAILABLE			750 6.13%	736 6.35%	.
	Hawaiian/Pacific Islander	NO DATA AVAILABLE			18 0.15%	17 0.15%	.
	Am. Indian/Alaskan Native	NO DATA AVAILABLE			106 0.87%	136 1.17%	.
	Non-Resident Alien	NO DATA AVAILABLE			116 0.95%	120 1.03%	.
	Other/Unknown	NO DATA AVAILABLE			401 3.28%	348 3.00%	.
Age	16 and Under	77 0.73%	167 1.39%	94 0.82%	31 0.25%	27 0.23%	-64.94%
	17	52 0.49%	34 0.28%	20 0.17%	3 0.02%	20 0.17%	-61.54%
	18	106 1.01%	70 0.58%	74 0.64%	8 0.07%	50 0.43%	-52.83%
	19-21	476 4.53%	485 4.03%	513 4.46%	386 3.16%	533 4.60%	11.97%
	22-24	762 7.25%	759 6.31%	740 6.43%	721 5.89%	844 7.28%	10.76%
	25-30	2,000 19.02%	2,211 18.38%	2,063 17.92%	2,089 17.08%	2,047 17.65%	2.35%
	31-35	1,497 14.23%	1,712 14.23%	1,684 14.63%	1,834 14.99%	1,691 14.58%	12.96%
	36-50	3,553 33.78%	4,230 35.16%	4,093 35.56%	4,334 35.43%	4,004 34.52%	12.69%
	51-64	1,707 16.23%	2,084 17.32%	1,998 17.36%	2,292 18.74%	1,973 17.01%	15.58%
	65 and over Unknown	233 2.22% 54 0.51%	280 2.33% 0 0.00%	230 2.00% 2 0.02%	322 2.63% 213 1.74%	269 2.32% 141 1.22%	15.45% 161.11%

¹ Unduplicated Race/Ethnicity - students were counted in only one category based on their Race/Ethnicity selection. "Two or more" includes non-Hispanic students that selected more than one race category.

² Duplicated Race/Ethnicity - students may be counted in more than one category based on their Race/Ethnicity selection with one exception: if students selected "Non-Resident Alien," they were counted only as "Non-Resident Alien" (regardless of whether they selected an additional race/ethnicity).

NOTE: Percents may not add to 100 due to rounding.

Source: Office of Institutional Effectiveness and Accountability

**Continuing Education
Annual Headcount by Region and Zip Code
Academic Year 2007 - 2011**

Region	Zip Code	AY 2007	AY 2008	AY 2009	AY 2010	AY 2011	07-11 % chg
Austin, Central							
Austin	78701	109	76	76	70	69	-36.70%
Austin	78703	152	152	141	157	133	-12.50%
Austin	78705	125	119	130	179	137	9.60%
Austin	78712	0	0	1	1	0	0.00%
Austin	78751	120	132	112	139	111	-7.50%
Austin	78752	109	108	109	128	119	9.17%
Austin	78756	76	94	91	86	74	-2.63%
Austin	78757	205	213	188	196	196	-4.39%
Total		896	894	848	956	839	-6.36%
% of Grand Total		8.52%	7.43%	7.37%	7.81%	7.23%	
Austin, East							
Austin	78702	107	160	146	146	145	35.51%
Austin	78721	59	59	68	60	57	-3.39%
Austin	78722	65	53	78	55	72	10.77%
Austin	78723	156	184	173	195	236	51.28%
Total		387	456	465	456	510	31.78%
% of Grand Total		3.68%	3.79%	4.04%	3.73%	4.40%	
Austin, North							
Austin	78727	279	318	298	353	316	13.26%
Austin	78728	125	149	147	156	148	18.40%
Austin	78758	398	409	412	435	389	-2.26%
Total		802	876	857	944	853	6.36%
% of Grand Total		7.63%	7.28%	7.45%	7.72%	7.35%	
Austin, Northwest							
Austin	78726	61	95	78	79	91	49.18%
Austin	78730	30	50	44	36	38	26.67%
Austin	78731	244	256	224	209	194	-20.49%
Austin	78750	161	173	159	165	141	-12.42%
Austin	78759	446	417	422	422	384	-13.90%
Total		942	991	927	911	848	-9.98%
% of Grand Total		8.96%	8.24%	8.05%	7.45%	7.31%	

NOTE: Headcount is based on zip code data as reported and entered in the ACC database. Zip code regions are based on definition developed by ACC administration.

Source: Office of Institutional Effectiveness and Accountability

**Continuing Education
Annual Headcount by Region and Zip Code (continued)
Academic Year 2007 - 2011**

Region	Zip Code	AY 2007	AY 2008	AY 2009	AY 2010	AY 2011	07-11 % chg
Austin/Travis County, South							
Manhaca	78652	20	31	48	35	27	35.00%
Austin	78704	423	425	463	436	464	9.69%
Austin	78745	504	532	531	536	523	3.77%
Austin	78748	294	350	364	400	393	33.67%
Total		1,241	1,338	1,406	1,407	1,407	13.38%
% of Grand Total		11.80%	11.12%	12.21%	11.50%	12.13%	
Austin/Travis County, Southeast							
Del Valle	78617	74	68	69	84	82	10.81%
Austin	78719	8	3	6	9	17	112.50%
Austin	78741	289	332	304	301	356	23.18%
Austin	78742	7	4	4	3	2	-71.43%
Austin	78744	223	263	199	254	195	-12.56%
Austin	78747	87	83	72	94	85	-2.30%
Total		688	753	654	745	737	7.12%
% of Grand Total		6.54%	6.26%	5.68%	6.09%	6.35%	
Austin/Travis County, Southwest							
Austin	78735	86	90	83	94	88	2.33%
Austin	78736	55	57	47	67	68	23.64%
Austin	78739	71	80	90	103	92	29.58%
Austin	78746	155	193	190	154	156	0.65%
Austin	78749	249	296	299	269	316	26.91%
Total		616	716	709	687	720	16.88%
% of Grand Total		5.86%	5.95%	6.16%	5.62%	6.21%	
Bastrop County¹							
Bastrop	78602	70	76	65	65	58	-17.14%
Cedar Creek	78612	30	43	44	42	43	43.33%
Elgin	78621	50	67	76	82	80	60.00%
McDade	78650	2	6	5	3	5	150.00%
Paige	78659	7	9	12	9	7	0.00%
Red Rock	78662	5	8	11	12	7	40.00%
Rosanky	78953	2	0	1	0	2	0.00%
Smithville	78957	22	27	25	28	20	-9.09%
Total		188	236	239	241	222	18.09%
% of Grand Total		1.79%	1.96%	2.08%	1.97%	1.91%	

¹ These numbers do not represent total headcount for the county due to zip codes that span more than one county.

NOTE: Headcount is based on zip code data as reported and entered in the ACC database. Zip code regions are based on definition developed by ACC administration.

Source: Office of Institutional Effectiveness and Accountability

**Continuing Education
Annual Headcount by Region and Zip Code (continued)
Academic Year 2007 - 2011**

Region	Zip Code	AY 2007	AY 2008	AY 2009	AY 2010	AY 2011	07-11 % chg
Blanco County¹							
Blanco	78606	2	3	6	6	9	350.00%
Johnson City	78636	2	7	9	11	16	700.00%
Round Mountain	78663	0	1	1	2	2	.
Total		4	11	16	19	27	575.00%
% of Grand Total		0.04%	0.09%	0.14%	0.16%	0.23%	
Burnet County²							
Bertram	78605	10	8	9	13	11	10.00%
Briggs	78608	0	2	1	3	1	.
Burnet	78611	13	13	22	16	21	61.54%
Marble Falls	78654	17	22	35	28	25	47.06%
Total		40	45	67	60	58	45.00%
% of Grand Total		0.38%	0.37%	0.58%	0.49%	0.50%	
Caldwell County¹							
Dale	78616	12	17	8	12	13	8.33%
Lockhart	78644	38	58	50	37	48	26.32%
Luling	78648	7	12	9	14	5	-28.57%
Martindale	78655	10	6	7	4	6	-40.00%
Maxwell	78656	4	3	2	2	5	25.00%
Total		71	96	76	69	77	8.45%
% of Grand Total		0.68%	0.80%	0.66%	0.56%	0.66%	
Cedar Park/Leander							
Cedar Park	78613	419	576	497	514	533	27.21%
Leander	78641	259	272	243	270	273	5.41%
Liberty Hill	78642	23	34	28	42	37	60.87%
Total		701	882	768	826	843	20.26%
% of Grand Total		6.67%	7.33%	6.67%	6.75%	7.27%	
Georgetown/North Williamson County²							
Florence	76527	18	16	16	9	11	-38.89%
Granger	76530	7	6	7	3	4	-42.86%
Jarrell	76537	8	17	12	16	7	-12.50%
Georgetown	78626	75	99	79	64	68	-9.33%
Georgetown	78628	105	108	119	88	89	-15.24%
Georgetown	78633	0	26	28	29	29	.
Total		213	272	261	209	208	-2.35%
% of Grand Total		2.03%	2.26%	2.27%	1.71%	1.79%	

¹ These numbers do not represent total headcount for the county due to zip codes that span more than one county.

² Excludes the territory within the Florence, Granger, Hutto, Taylor, Thrall, Waelder, and Gonzales ISDs.

NOTE: Headcount is based on zip code data as reported and entered in the ACC database. Zip code regions are based on definition developed by ACC administration.

Source: Office of Institutional Effectiveness and Accountability

**Continuing Education
Annual Headcount by Region and Zip Code (continued)
Academic Year 2007 - 2011**

Region	Zip Code	AY 2007	AY 2008	AY 2009	AY 2010	AY 2011	07-11 % chg
Gillespie County¹							
Doss	78618	0	0	0	1	0	0.00%
Fredericksburg	78624	4	17	21	16	13	225.00%
Harper	78631	1	1	2	2	1	0.00%
Stonewall	78671	0	1	0	1	0	0.00%
Total		5	19	23	20	14	180.00%
% of Grand Total		0.05%	0.16%	0.20%	0.16%	0.12%	
Gonzales County²							
Nixon	78140	1	1	1	1	1	0.00%
Gonzales	78629	2	4	3	3	2	0.00%
Ottine	78658	0	1	0	0	0	0.00%
Total		3	6	4	4	3	0.00%
% of Grand Total		0.03%	0.05%	0.03%	0.03%	0.03%	
Hays County¹							
Buda	78610	77	103	92	100	101	31.17%
Driftwood	78619	13	16	16	17	12	-7.69%
Dripping Springs	78620	45	70	78	72	64	42.22%
Kyle	78640	112	149	150	159	165	47.32%
San Marcos	78666	122	149	83	92	102	-16.39%
San Marcos	78667	0	13	8	10	4	.
Wimberley	78676	32	43	40	30	35	9.38%
Austin	78737	43	71	84	89	76	76.74%
Total		444	614	551	569	559	25.90%
% of Grand Total		4.22%	5.10%	4.79%	4.65%	4.82%	
Manor/East Travis County							
Manor	78653	96	114	84	91	79	-17.71%
Austin	78724	83	93	80	93	94	13.25%
Austin	78725	35	33	35	53	36	2.86%
Total		214	240	199	237	209	-2.34%
% of Grand Total		2.03%	1.99%	1.73%	1.94%	1.80%	
Pflugerville/Northeast Travis County							
Pflugerville	78660	339	435	389	406	367	8.26%
Austin	78753	353	382	346	385	347	-1.70%
Austin	78754	80	110	94	110	123	53.75%
Total		772	927	829	901	837	8.42%
% of Grand Total		7.34%	7.70%	7.20%	7.37%	7.22%	

¹ These numbers do not represent total headcount for the county due to zip codes that span more than one county.

² Excludes the territory within the Florence, Granger, Hutto, Taylor, Thrall, Waelder, and Gonzales ISDs.

NOTE: Headcount is based on zip code data as reported and entered in the ACC database. Zip code regions are based on definition developed by ACC administration.

Source: Office of Institutional Effectiveness and Accountability

**Continuing Education
Annual Headcount by Region and Zip Code (continued)
Academic Year 2007 - 2011**

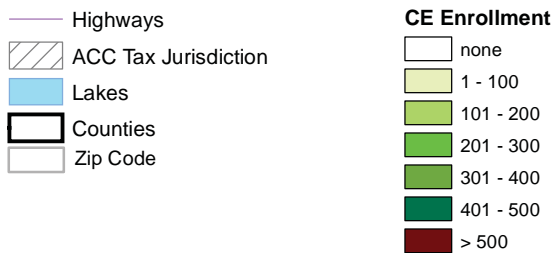
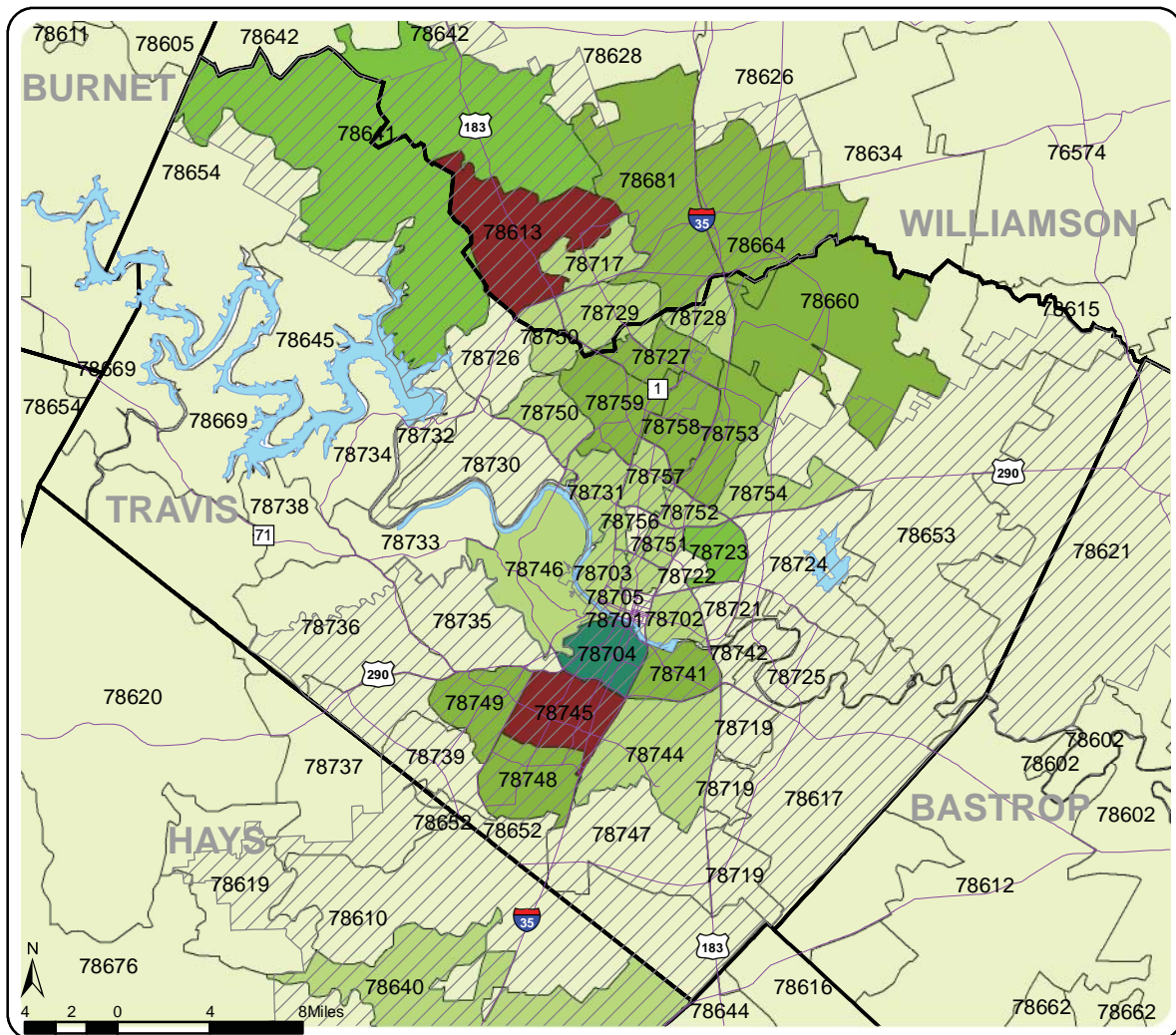
Region	Zip Code	AY 2007	AY 2008	AY 2009	AY 2010	AY 2011	07-11 % chg
Round Rock							
Round Rock	78664	403	462	417	366	353	-12.41%
Round Rock	78665	0	100	165	169	206	.
Round Rock	78681	213	274	285	329	307	44.13%
Austin	78717	104	145	139	149	141	35.58%
Austin	78729	170	205	183	226	203	19.41%
Total		890	1,186	1,189	1,239	1,210	35.96%
% of Grand Total		8.46%	9.86%	10.33%	10.13%	10.43%	
Taylor/Hutto/East Williamson County¹							
Taylor	76574	27	42	38	40	31	14.81%
Thrall	76578	3	4	3	6	4	33.33%
Coupland	78615	4	5	8	8	5	25.00%
Hutto	78634	63	85	79	92	90	42.86%
Total		97	136	128	146	130	34.02%
% of Grand Total		0.92%	1.13%	1.11%	1.19%	1.12%	
West Travis County							
Leander	78645	51	55	53	65	63	23.53%
Spicewood	78669	16	19	32	43	31	93.75%
Austin	78732	45	54	56	54	59	31.11%
Austin	78733	38	29	40	41	24	-36.84%
Austin	78734	61	84	80	78	86	40.98%
Austin	78738	33	39	41	33	37	12.12%
Total		244	280	302	314	300	22.95%
% of Grand Total		2.32%	2.33%	2.62%	2.57%	2.59%	
Other/Unknown		1,059	1,058	993	1,273	988	-6.70%
% of Grand Total		10.07%	8.79%	8.63%	10.41%	8.52%	
Grand Total		10,517	12,032	11,511	12,233	11,599	10.29%

¹ Excludes the territory within the Florence, Granger, Hutto, Taylor, Thrall, Waelder, and Gonzales ISDs.

NOTE: Headcount is based on zip code data as reported and entered in the ACC database. Zip code regions are based on definition developed by ACC administration.

Source: Office of Institutional Effectiveness and Accountability

Continuing Education Annual Headcount by Zip Code Map Academic Year 2011



NOTE: Headcount is based on zip code data as reported and entered in the ACC database.

Source: Office of Institutional Effectiveness and Accountability

**Continuing Education
Annual Headcount by Zip Code
Academic Year 2007 - 2011**

Zip Code	Region	AY 2007	AY 2008	AY 2009	AY 2010	AY 2011	07-11 % chg	
76527	Florence	Georgetown/North Williamson County ¹	18	16	16	9	11	-38.89%
76530	Granger	Georgetown/North Williamson County ¹	7	6	7	3	4	-42.86%
76537	Jarrell	Georgetown/North Williamson County ¹	8	17	12	16	7	-12.50%
76574	Taylor	Taylor/Hutto/East Williamson County ¹	27	42	38	40	31	14.81%
76578	Thrall	Taylor/Hutto/East Williamson County ¹	3	4	3	6	4	33.33%
78140	Nixon	Gonzales County ¹	1	1	1	1	1	0.00%
78602	Bastrop	Bastrop County ²	70	76	65	65	58	-17.14%
78605	Bertram	Burnet County ¹	10	8	9	13	11	10.00%
78606	Blanco	Blanco County ²	2	3	6	6	9	350.00%
78608	Briggs	Burnet County ¹	0	2	1	3	1	.
78610	Buda	Hays County ²	77	103	92	100	101	31.17%
78611	Burnet	Burnet County ¹	13	13	22	16	21	61.54%
78612	Cedar Creek	Bastrop County ²	30	43	44	42	43	43.33%
78613	Cedar Park	Cedar Park/Leander	419	576	497	514	533	27.21%
78615	Coupland	Taylor/Hutto/East Williamson County ¹	4	5	8	8	5	25.00%
78616	Dale	Caldwell County ²	12	17	8	12	13	8.33%
78617	Del Valle	Austin/Travis County, Southeast	74	68	69	84	82	10.81%
78618	Doss	Gillespie County ²	0	0	0	1	0	0.00%
78619	Driftwood	Hays County ²	13	16	16	17	12	-7.69%
78620	Dripping Springs	Hays County ²	45	70	78	72	64	42.22%
78621	Elgin	Bastrop County ²	50	67	76	82	80	60.00%
78624	Fredericksburg	Gillespie County ²	4	17	21	16	13	225.00%
78626	Georgetown	Georgetown/North Williamson County ¹	75	99	79	64	68	-9.33%
78628	Georgetown	Georgetown/North Williamson County ¹	105	108	119	88	89	-15.24%
78629	Gonzales	Gonzales County ¹	2	4	3	3	2	0.00%
78631	Harper	Gillespie County ²	1	1	2	2	1	0.00%
78633	Georgetown	Georgetown/North Williamson County ¹	0	26	28	29	29	.
78634	Hutto	Taylor/Hutto/East Williamson County ¹	63	85	79	92	90	42.86%
78636	Johnson City	Blanco County ²	2	7	9	11	16	700.00%
78640	Kyle	Hays County ²	112	149	150	159	165	47.32%
78641	Leander	Cedar Park/Leander	259	272	243	270	273	5.41%
78642	Liberty Hill	Cedar Park/Leander	23	34	28	42	37	60.87%
78644	Lockhart	Caldwell County ²	38	58	50	37	48	26.32%
78645	Leander	West Travis County	51	55	53	65	63	23.53%
78648	Luling	Caldwell County ²	7	12	9	14	5	-28.57%
78650	McDade	Bastrop County ²	2	6	5	3	5	150.00%

¹ Excludes the territory within the Florence, Granger, Hutto, Taylor, Thrall, Waelder, and Gonzales ISDs.

² These numbers do not represent total headcount for the county due to zip codes that span more than one county.

NOTE: Headcount is based on zip code data as reported and entered in the ACC database. Zip code regions are based on definition developed by ACC administration.

Source: Office of Institutional Effectiveness and Accountability

**Continuing Education
Annual Headcount by Zip Code (continued)
Academic Year 2007 - 2011**

Zip Code	Region	AY 2007	AY 2008	AY 2009	AY 2010	AY 2011	07-11 % chg	
78652	Manchaca	Austin/Travis County, South	20	31	48	35	27	35.00%
78653	Manor	Manor/East Travis County	96	114	84	91	79	-17.71%
78654	Marble Falls	Burnet County ¹	17	22	35	28	25	47.06%
78655	Martindale	Caldwell County ²	10	6	7	4	6	-40.00%
78656	Maxwell	Caldwell County ²	4	3	2	2	5	25.00%
78658	Ottine	Gonzales County ¹	0	1	0	0	0	0.00%
78659	Paige	Bastrop County ²	7	9	12	9	7	0.00%
78660	Pflugerville	Pflugerville/Northeast Travis County	339	435	389	406	367	8.26%
78662	Red Rock	Bastrop County ²	5	8	11	12	7	40.00%
78663	Round Mountain	Blanco County ²	0	1	1	2	2	.
78664	Round Rock	Round Rock	403	462	417	366	353	-12.41%
78665	Round Rock	Round Rock	0	100	165	169	206	.
78666	San Marcos	Hays County ²	122	149	83	92	102	-16.39%
78667	San Marcos	Hays County ²	0	13	8	10	4	.
78669	Spicewood	West Travis County	16	19	32	43	31	93.75%
78671	Stonewall	Gillespie County ²	0	1	0	1	0	0.00%
78676	Wimberley	Hays County ²	32	43	40	30	35	9.38%
78681	Round Rock	Round Rock	213	274	285	329	307	44.13%
78701	Austin	Austin, Central	109	76	76	70	69	-36.70%
78702	Austin	Austin, East	107	160	146	146	145	35.51%
78703	Austin	Austin, Central	152	152	141	157	133	-12.50%
78704	Austin	Austin/Travis County, South	423	425	463	436	464	9.69%
78705	Austin	Austin, Central	125	119	130	179	137	9.60%
78712	Austin	Austin, Central	0	0	1	1	0	0.00%
78717	Austin	Round Rock	104	145	139	149	141	35.58%
78719	Austin	Austin/Travis County, Southeast	8	3	6	9	17	112.50%
78721	Austin	Austin, East	59	59	68	60	57	-3.39%
78722	Austin	Austin, East	65	53	78	55	72	10.77%
78723	Austin	Austin, East	156	184	173	195	236	51.28%
78724	Austin	Manor/East Travis County	83	93	80	93	94	13.25%
78725	Austin	Manor/East Travis County	35	33	35	53	36	2.86%
78726	Austin	Austin, Northwest	61	95	78	79	91	49.18%
78727	Austin	Austin, North	279	318	298	353	316	13.26%
78728	Austin	Austin, North	125	149	147	156	148	18.40%
78729	Austin	Round Rock	170	205	183	226	203	19.41%
78730	Austin	Austin, Northwest	30	50	44	36	38	26.67%

¹ Excludes the territory within the Florence, Granger, Hutto, Taylor, Thrall, Waelder, and Gonzales ISDs.

² These numbers do not represent total headcount for the county due to zip codes that span more than one county.

NOTE: Headcount is based on zip code data as reported and entered in the ACC database. Zip code regions are based on definition developed by ACC administration.

Source: Office of Institutional Effectiveness and Accountability

**Continuing Education
Annual Headcount by Zip Code (continued)
Academic Year 2007 - 2011**

Zip Code	Region	AY 2007	AY 2008	AY 2009	AY 2010	AY 2011	07-11 % chg
78731	Austin	244	256	224	209	194	-20.49%
78732	Austin	45	54	56	54	59	31.11%
78733	Austin	38	29	40	41	24	-36.84%
78734	Austin	61	84	80	78	86	40.98%
78735	Austin	86	90	83	94	88	2.33%
78736	Austin	55	57	47	67	68	23.64%
78737	Austin	43	71	84	89	76	76.74%
78738	Austin	33	39	41	33	37	12.12%
78739	Austin	71	80	90	103	92	29.58%
78741	Austin	289	332	304	301	356	23.18%
78742	Austin	7	4	4	3	2	-71.43%
78744	Austin	223	263	199	254	195	-12.56%
78745	Austin	504	532	531	536	523	3.77%
78746	Austin	155	193	190	154	156	0.65%
78747	Austin	87	83	72	94	85	-2.30%
78748	Austin	294	350	364	400	393	33.67%
78749	Austin	249	296	299	269	316	26.91%
78750	Austin	161	173	159	165	141	-12.42%
78751	Austin	120	132	112	139	111	-7.50%
78752	Austin	109	108	109	128	119	9.17%
78753	Austin	353	382	346	385	347	-1.70%
78754	Austin	80	110	94	110	123	53.75%
78756	Austin	76	94	91	86	74	-2.63%
78757	Austin	205	213	188	196	196	-4.39%
78758	Austin	398	409	412	435	389	-2.26%
78759	Austin	446	417	422	422	384	-13.90%
78953	Rosanky	2	0	1	0	2	0.00%
78957	Smithville	22	27	25	28	20	-9.09%
	Other/Unknown	1,059	1,058	993	1,273	988	-6.70%
	Grand Total	10,517	12,032	11,511	12,233	11,599	10.29%

¹ These numbers do not represent total headcount for the county due to zip codes that span more than one county.

NOTE: Headcount is based on zip code data as reported and entered in the ACC database. Zip code regions are based on definition developed by ACC administration.

Source: Office of Institutional Effectiveness and Accountability

**Continuing Education
Course Enrollment by Location
Academic Year 2011**

<u>Location</u>	<u>AY 2011</u>	<u>% of Total</u>	<u>Location (continued)</u>	<u>AY 2011</u>	<u>% of Total</u>
Art Glass Fusing Center	95	0.38%	Highland Business Center (ACC)	6,130	24.67%
Associated Builders & Contract	126	0.51%	Intertech Flooring	20	0.08%
Austin Fire Department	7,427	29.89%	Iron Works (JATC)	136	0.55%
Austin Self Defense	17	0.07%	Lions Municipal Golf Course	28	0.11%
Buckner Villas Ret. Comm.	116	0.47%	Monte Siesta Nursing & Rehab	8	0.03%
Cap City Comedy Club	8	0.03%	Northridge Campus (ACC)	736	2.96%
Carpenters Hall (JATC) ¹	61	0.25%	Out Back Stables	7	0.03%
Concordia Academy	68	0.27%	Other Training Locations	1,203	4.84%
Contract Training Location	1,537	6.19%	Pinnacle Campus (ACC)	180	0.72%
Custom Cycle & Machine	43	0.17%	Pioneer Farms	70	0.28%
Cypress Creek Campus (ACC)	382	1.54%	Practicum-Internship-Clinical	76	0.31%
D Ette Dance Studio	1	0.00%	Raindrop Turkish Cultural Center	37	0.15%
Dance International	36	0.14%	Richard Lord's Boxing Gym	25	0.10%
Decola & Eusebi Studio	14	0.06%	Rio Grande Campus (ACC)	403	1.62%
Distance Learning	1,876	7.55%	Riverside Campus (ACC)	762	3.07%
East by South East Studios, LI	18	0.07%	Round Rock Campus (ACC)	720	2.90%
Eastview Campus (ACC)	892	3.59%	South Austin Campus (ACC)	583	2.35%
Gary Job Corp	228	0.92%	State Theater School Acting	396	1.59%
Georgetown High School	5	0.02%	Texas Rowing Center	34	0.14%
Georgetown Wesleyan Nursing	70	0.28%	The Dance Zone	27	0.11%
Govalle Care Center	123	0.50%	Town Lake Animal Shelter	41	0.17%
Gryphon Aviation	30	0.12%	Travis County Community Justice	11	0.04%
Hay's County Sheriff's Office	40	0.16%	TOTAL	24,846	100.00%

¹ JATC is an abbreviation for Joint Apprenticeship and Training Committees.

NOTE: Students who enroll in more than one course are counted once for each course. Percents may not add to 100 due to rounding.

Source: Office of Institutional Effectiveness and Accountability

**Continuing Education
Course Enrollment by Program Area
Academic Year 2011**

Program Area	AY 2007	AY 2008	AY 2009	AY 2010	AY 2011	07-11 % chg
Apprenticeship	300	288	232	277	269	-10.33%
Business & Industry Institute	2,889	5,968	10,020	13,532	10,304	256.66%
Community Programs	4,394	4,575	4,625	4,513	4,464	1.59%
Corporate Training Solutions	2,077	2,230	2,097	2,815	1,732	-16.61%
Health Professions Institute	3,818	6,466	3,592	3,871	4,664	22.16%
High Technology Institute	3,049	3,617	2,766	2,660	2,688	-11.84%
Independent Study	51	51	9	58	24	-52.94%
Job Entry Preparation ¹	80
Non Profit Organizations	2	105	18	.	56	.
Teacher Certification	362	376	549	592	645	78.18%
Truck Driving ²	242
TOTAL	17,264	23,676	23,908	28,318	24,846	43.92%

¹ Some of these programs have been discontinued due to changing regional demand, and the remainder of the them are now included in the Business & Industry Institute numbers.

² Truck Driving has been rolled into Business & Industry Institute beginning in Academic Year 2008.

NOTE: Students who enroll in more than one course are counted once for each course. Percents may not add to 100 due to rounding.

Source: Office of Institutional Effectiveness and Accountability

THIS PAGE INTENTIONALLY LEFT BLANK