

Enrollment by Area

This section can be used for finding:

- course enrollment, semester credit hours, and contact hours by program.
- student headcount, enrollment, contact hours, and semester credit hours by dean area and location.

Contents

Useful Terms	154
<u>Summer 2011</u>	
Student Headcount, Course Enrollment, Contact and Semester Credit Hours by Location	155
Course Enrollment	156
Academic Areas	156
Workforce Areas	158
Semester Credit Hours	160
Academic Areas	160
Workforce Areas	162
Contact Hours	164
Academic Areas	164
Workforce Areas	166
Distance Learning Course Enrollment and Contact Hours	168
<u>Fall 2011</u>	
Student Headcount, Course Enrollment, Contact and Semester Credit Hours by Location	169
Course Enrollment	170
Academic Areas	170
Workforce Areas	172
Semester Credit Hours	174
Academic Areas	174
Workforce Areas	176
Contact Hours	178
Academic Areas	178
Workforce Areas	180
Distance Learning Course Enrollment and Contact Hours	182
<u>Spring 2012</u>	
Student Headcount, Course Enrollment, Contact and Semester Credit Hours by Location	183
Course Enrollment	184
Academic Areas	184
Workforce Areas	186
Semester Credit Hours	188
Academic Areas	188
Workforce Areas	190
Contact Hours	192
Academic Areas	192
Workforce Areas	194
Distance Learning Course Enrollment and Contact Hours	196
Annual Contact Hours by Dean Area	197

Useful Terms

4th Class Day Data (Second 5½ week session) - data for summer classes, as of the 4th day of class of the second 5 1/2 week session. (Official Reporting Date for the Summer Semester)

12th Class Day Data - data for Fall or Spring classes, as of the 12th day of class of the 16-week session. (Official Reporting Date for the Fall and Spring Semesters)

Centers - locations other than campuses that are staffed, have regular posted hours, and offer credit courses on a regular basis (every semester).

Contact Hour - an instructional unit of time in which a student has contact with an instructor; includes both lecture and laboratory time.

Distance Learning - includes non-traditional courses offered through Directed Studies, Hybrid courses, Instructional Television, Online, and Print-Based courses.

Duplicated Headcount - occurs when a student is counted more than one time because they are enrolled in more than one course. For example, a student who attends several courses at one location and one or more courses at a second location is counted twice, once at each location.

Enrollment - the number of students registered for courses.

Headcount - the number of students enrolled in one or more courses. This number may be duplicated or unduplicated.

Reporting Dates - Fall/Spring: 12th Class Day
Summer: 4th Class Day of the second 5½ week session

Semester Credit Hours (SCH) - a unit of measure of instruction consisting of 60 minutes of which 50 minutes must be direct instruction. For example, PSYC-2301 meets for three hours a week and is worth three semester credit hours.

Site-Based Instruction - includes various credit and non-credit classes and training to businesses, government entities, high schools, correctional institutions, and community groups.

Unduplicated Headcount - the sum of students enrolled in credit courses with each student counted only once during the reporting period.

**Student Headcount, Course Enrollment, Contact Hours, and Semester
Credit Hours by Location
Summer 2011**

Location	Headcount¹	Course Enrollment²	Contact Hours³	Semester Credit Hours
Cypress Creek Campus	2,911	3,965	233,952	11,964
Eastview Campus	2,030	2,829	231,213	8,077
Northridge Campus	5,781	8,374	495,096	24,784
Pinnacle Campus	1,442	1,762	100,192	5,355
Rio Grande Campus	5,661	7,909	463,520	24,934
Riverside Campus	3,489	4,856	295,040	14,584
Round Rock Campus	3,029	4,333	258,576	12,944
South Austin Campus	1,858	2,456	139,080	7,363
Distance Learning ⁴	8,713	12,334	610,104	36,914
Centers ⁵	980	1,354	72,608	4,141
Site-Based Instruction ⁶	2,199	3,139	157,232	9,435

¹ Students who attend multiple locations are counted once at each location.

² Students who enroll in more than one course are counted once for each course.

³ An instructional unit of time in which a student has contact with an instructor; includes lecture and/or laboratory time.

⁴ Distance Learning includes non-traditional courses offered through Directed Studies, Hybrid courses, Instructional Television, Online, and Print-Based courses.

⁵ Locations, other than campuses, that are staffed, have regular posted hours, and offer credit courses on a regular basis (every semester).

⁶ Various credit and non-credit classes and training offered for businesses, government entities, high schools, correctional institutions, and community groups.

Source: Summer 4th Class Day Data (Second summer session)

**Course Enrollment¹
Academic Areas
Summer 2007 - 2011**

Arts & Humanities	Summer 2007	Summer 2008	Summer 2009	Summer 2010	Summer 2011	07-11 % chg
Arabic	22	26	23	26	23	4.55%
Art	636	694	852	903	886	39.31%
Chinese	.	.	.	22	22	.
Creative Writing	41	55	55	42	62	51.22%
Dance	60	56	42	67	57	-5.00%
Drama	91	92	68	207	219	140.66%
English for Speakers of Other Languages	250	250	315	401	435	74.00%
French	131	131	154	163	133	1.53%
German	72	61	82	84	44	-38.89%
Humanities	141	139	141	250	315	123.40%
Japanese	40	48	47	71	59	47.50%
Latin	.	.	30	29	17	.
Philosophy	747	750	837	913	986	31.99%
Religion	51	48	72	86	52	1.96%
Spanish	1,608	1,567	1,715	1,944	1,630	1.37%
TOTAL	3,890	3,917	4,433	5,208	4,940	26.99%

Communications	Summer 2007	Summer 2008	Summer 2009	Summer 2010	Summer 2011	07-11 % chg
English	3,229	3,357	3,926	4,206	3,795	17.53%
Journalism	60	78	74	67	94	56.67%
Reading - Developmental	209	235	318	440	393	88.04%
Speech	1,669	1,739	2,088	2,274	2,412	44.52%
Writing - Developmental	141	164	233	294	338	139.72%
TOTAL	5,308	5,573	6,639	7,281	7,032	32.48%

¹ Students who enroll in more than one course are counted once for each course.

NOTE: Disciplines are listed under the current (2010-11) dean area; they may have been listed under another dean area in previous years. A "." means that the program did not offer courses that semester.

Source: Summer 4th Class Day Data (Second summer session)

**Course Enrollment¹
Academic Areas
Summer 2007 - 2011**

Math & Sciences	Summer 2007	Summer 2008	Summer 2009	Summer 2010	Summer 2011	07-11 % chg
Astronomy	122	112	115	172	142	16.39%
Biology	1,968	2,145	2,605	2,802	2,918	48.27%
Biotechnology	40	24	37	32	7	-82.50%
Chemistry	764	844	1,908	2,024	2,296	200.52%
Engineering	.	14	.	59	51	.
Environmental Science & Technology	39	44	52	55	59	51.28%
Geology	237	238	264	347	260	9.70%
Mathematics	2,782	2,826	3,188	3,373	3,565	28.15%
Mathematics - Developmental	2,062	2,181	2,562	3,193	3,001	45.54%
Physics	841	895	1,013	1,058	1,032	22.71%
TOTAL	8,855	9,323	11,744	13,115	13,331	50.55%
Social & Behavioral Sciences	Summer 2007	Summer 2008	Summer 2009	Summer 2010	Summer 2011	07-11 % chg
Anthropology	305	313	291	432	329	7.87%
Economics	1,698	1,855	2,107	2,337	2,075	22.20%
Educational Instruction	.	22	49	43	38	.
Geographic Information Systems ²	1	.
Geography	335	373	380	382	335	0.00%
Government	4,175	4,441	4,926	5,426	5,038	20.67%
History	4,718	4,977	5,601	5,945	6,050	28.23%
Human Development	110	113	205	351	263	139.09%
Psychology	1,185	1,202	1,472	1,937	1,746	47.34%
Sociology	459	550	615	834	676	47.28%
TOTAL	12,985	13,846	15,646	17,687	16,551	27.46%
SUBTOTAL FOR ACADEMIC	31,038	32,659	38,462	43,291	41,854	34.85%

¹ Students who enroll in more than one course are counted once for each course.

² Geographic Information Systems began in Fall 2009.

NOTE: Disciplines are listed under the current (2010-11) dean area; they may have been listed under another dean area in previous years. A "." means that the program did not offer courses that semester.

Source: Summer 4th Class Day Data (Second summer session)

**Course Enrollment¹
Workforce Areas
Summer 2007 - 2011**

Applied Technologies, Multimedia, & Public Services	Summer 2007	Summer 2008	Summer 2009	Summer 2010	Summer 2011	07-11 % chg
American Sign Lang. Interpreter Train. ²	249	.
Auto Body Collision & Refinishing ³	.	.	41	31	50	.
Automotive Technology & Outdoor Powered Equipment	141	141	165	198	246	74.47%
Building Construction Technology	185	176	165	188	183	-1.08%
Child Care & Development	112	156	104	208	153	36.61%
Commercial Music Management	122	122	144	166	163	33.61%
Criminal Justice	260	248	330	395	457	75.77%
Fire Protection Technology	46	27	25	55	22	-52.17%
Heating, AC, & Refrigeration Technology	64	48	120	137	158	146.88%
Human Services	261	273	310	390	191	-26.82%
Jewelry	44	56	55	50	49	11.36%
Music	295	311	336	373	362	22.71%
Paralegal	120	142	165	201	222	85.00%
Photographic Technology	132	146	186	216	156	18.18%
Radio-TV-Film	70	76	127	126	141	101.43%
Welding Technology	119	101	134	152	184	54.62%
TOTAL	1,971	2,023	2,407	2,886	2,986	51.50%

Business Studies	Summer 2007	Summer 2008	Summer 2009	Summer 2010	Summer 2011	07-11 % chg
Accounting	781	906	993	978	1,034	32.39%
Business & Technical Communications	86	78	110	146	144	67.44%
Culinary Arts	28	19	53	71	144	414.29%
Financial Management	110	68	78	87	58	-47.27%
Hospitality Management	46	46	45	63	71	54.35%
International Business	30	29	19	15	17	-43.33%
Management	368	404	416	475	473	28.53%
Marketing	155	149	183	228	150	-3.23%
Meeting & Events Planning	.	11	11	10	12	.
Office Administration	128	155	200	230	210	64.06%
Real Estate	299	180	131	132	154	-48.49%
Travel & Tourism	.	.	6	15	13	.
TOTAL	2,031	2,045	2,245	2,450	2,480	22.11%

¹ Students who enroll in more than one course are counted once for each course.

² American Sign Language Interpreter Training began in Fall 2010.

³ Auto Body Collision & Refinishing began in Fall 2008.

NOTE: Disciplines are listed under the current (2010-11) dean area; they may have been listed under another dean area in previous years. A "." means that the program did not offer courses that semester.

Source: Summer 4th Class Day Data (Second summer session)

**Course Enrollment¹
Workforce Areas
Summer 2007 - 2011**

Computer Studies & Advanced Technology	Summer 2007	Summer 2008	Summer 2009	Summer 2010	Summer 2011	07-11 % chg
Architectural & Engineering CAD	208	200	230	221	220	5.77%
Computer Information Technology	374	296	430	500	466	24.60%
Computer Science	645	620	733	776	707	9.61%
Electronics & Advanced Technology	99	147	145	177	173	74.75%
Land Surveying Technology/Geomatics	12	.	11	10	.	.
Visual Communication	312	393	513	579	615	97.12%
TOTAL	1,650	1,656	2,062	2,263	2,181	32.18%
Health Sciences	Summer 2007	Summer 2008	Summer 2009	Summer 2010	Summer 2011	07-11 % chg
Allied Health Sciences	418	470	578	652	706	68.90%
Dental Hygiene	.	.	18	14	18	.
Diagnostic Medical Imaging Radiology	176	126	158	149	185	5.11%
Emergency Medical Services Professions	116	196	273	258	258	122.41%
Health and Kinesiology	825	860	1,124	1,177	1,236	49.82%
Health Information Technology	31	44	66	86	147	374.19%
Medical Lab Technology	52	67	83	119	180	246.15%
Nursing - Professional	413	531	570	354	409	-0.97%
Nursing - Vocational	160	190	161	179	255	59.38%
Occupational Therapy Assistant	32	30	56	72	69	115.63%
Personal Fitness Trainer	4	5	5	6	7	75.00%
Pharmacy Technology	39	56	57	83	73	87.18%
Physical Therapist Assistant	89	101	126	82	38	-57.30%
Sonography	144	150	167	157	171	18.75%
Surgical Technology	54	50	52	56	58	7.41%
TOTAL	2,553	2,876	3,494	3,444	3,810	49.24%
SUBTOTAL FOR WORKFORCE	8,205	8,600	10,208	11,043	11,457	39.63%
GRAND TOTAL (Academic & Workforce)	39,243	41,259	48,670	54,334	53,311	35.85%

¹ Students who enroll in more than one course are counted once for each course.

NOTE: Disciplines are listed under the current (2010-11) dean area; they may have been listed under another dean area in previous years. A "." means that the program did not offer courses that semester.

Source: Summer 4th Class Day Data (Second summer session)

**Semester Credit Hours¹
Academic Areas
Summer 2007 - 2011**

Arts & Humanities	Summer 2007	Summer 2008	Summer 2009	Summer 2010	Summer 2011	07-11 % chg
Arabic	110	130	115	130	115	4.55%
Art	1,908	2,082	2,556	2,709	2,658	39.31%
Chinese	.	.	.	110	110	.
Creative Writing	123	165	165	126	186	51.22%
Dance	103	99	73	123	96	-6.80%
Drama	273	276	204	621	657	140.66%
English for Speakers of Other Languages	750	750	945	1,203	1,305	74.00%
French	511	525	580	619	495	-3.13%
German	280	243	338	344	220	-21.43%
Humanities	423	417	423	750	945	123.40%
Japanese	200	240	235	355	295	47.50%
Latin	.	.	150	145	85	.
Philosophy	2,241	2,250	2,511	2,739	2,958	31.99%
Religion	153	144	216	258	156	1.96%
Spanish	6,620	6,471	7,151	8,036	6,938	4.80%
TOTAL	13,695	13,792	15,662	18,268	17,219	25.73%

Communications	Summer 2007	Summer 2008	Summer 2009	Summer 2010	Summer 2011	07-11 % chg
English	9,687	10,071	11,778	12,618	11,385	17.53%
Journalism	180	234	222	201	282	56.67%
Reading - Developmental	627	705	954	1,316	1,179	88.04%
Speech	5,007	5,217	6,264	6,822	7,236	44.52%
Writing - Developmental	423	490	699	882	1,014	139.72%
TOTAL	15,924	16,717	19,917	21,839	21,096	32.48%

¹ Students who enroll in more than one course are counted once for each course.

NOTE: Disciplines are listed under the current (2010-11) dean area; they may have been listed under another dean area in previous years. A "." means that the program did not offer courses that semester.

Source: Summer 4th Class Day Data (Second summer session)

**Semester Credit Hours¹
Academic Areas
Summer 2007 - 2011**

Math & Sciences	Summer 2007	Summer 2008	Summer 2009	Summer 2010	Summer 2011	07-11 % chg
Astronomy	366	336	345	535	448	22.40%
Biology	6,004	6,433	7,894	8,425	8,641	43.92%
Biotechnology	111	87	138	128	28	-74.77%
Chemistry	3,056	3,376	3,840	4,064	4,608	50.79%
Engineering	.	28	.	155	131	.
Environmental Science & Technology	117	132	156	166	178	52.14%
Geology	806	782	882	1,157	887	10.05%
Mathematics	9,260	9,376	10,616	11,145	11,812	27.56%
Mathematics - Developmental	6,150	6,505	7,674	9,569	8,981	46.03%
Physics	3,364	3,580	4,052	4,232	4,128	22.71%
TOTAL	29,234	30,635	35,597	39,576	39,842	36.29%
Social & Behavioral Sciences	Summer 2007	Summer 2008	Summer 2009	Summer 2010	Summer 2011	07-11 % chg
Anthropology	915	939	873	1,296	987	7.87%
Economics	5,094	5,565	6,321	7,011	6,225	22.20%
Educational Instruction	.	66	147	129	114	.
Geographic Information Systems ²	2	.
Geography	1,017	1,119	1,165	1,172	1,028	1.08%
Government	12,525	13,323	14,778	16,278	15,114	20.67%
History	14,154	14,931	16,803	17,835	18,150	28.23%
Human Development	136	145	337	655	449	230.15%
Psychology	3,555	3,606	4,416	5,811	5,238	47.34%
Sociology	1,377	1,650	1,845	2,502	2,028	47.28%
TOTAL	38,773	41,344	46,685	52,689	49,335	27.24%
SUBTOTAL FOR ACADEMIC	97,626	102,488	117,861	132,372	127,492	30.59%

¹ Students who enroll in more than one course are counted once for each course.

² Geographic Information Systems began in Fall 2009.

NOTE: Disciplines are listed under the current (2010-11) dean area; they may have been listed under another dean area in previous years. A "." means that the program did not offer courses that semester.

Source: Summer 4th Class Day Data (Second summer session)

**Semester Credit Hours¹
Workforce Areas
Summer 2007 - 2011**

Applied Technologies, Multimedia, & Public Services	Summer 2007	Summer 2008	Summer 2009	Summer 2010	Summer 2011	07-11 % chg
American Sign Lang. Interpreter Train. ²	861	.
Auto Body Collision & Refinishing ³	.	.	164	116	174	.
Automotive Technology & Outdoor Powered Equipment	564	558	660	792	984	74.47%
Building Construction Technology	623	599	591	662	682	9.47%
Child Care & Development	390	509	381	719	541	38.72%
Commercial Music Management	344	349	405	463	465	35.17%
Criminal Justice	808	801	1,028	1,256	1,416	75.25%
Fire Protection Technology	138	81	75	165	66	-52.17%
Heating, AC, & Refrigeration Technology	244	182	456	512	590	141.80%
Human Services	960	970	1,028	1,311	599	-37.60%
Jewelry	176	224	220	200	196	11.36%
Music	681	721	794	892	849	24.67%
Paralegal	360	426	495	603	666	85.00%
Photographic Technology	451	428	555	632	447	-0.89%
Radio-TV-Film	210	228	381	378	423	101.43%
Welding Technology	476	404	536	608	736	54.62%
TOTAL	6,425	6,480	7,769	9,309	9,695	50.89%

Business Studies	Summer 2007	Summer 2008	Summer 2009	Summer 2010	Summer 2011	07-11 % chg
Accounting	2,256	2,619	2,999	2,952	3,117	38.16%
Business & Technical Communications	264	234	335	447	435	64.77%
Culinary Arts	84	57	135	191	372	342.86%
Financial Management	330	204	234	261	174	-47.27%
Hospitality Management	138	138	135	189	213	54.35%
International Business	90	87	57	45	51	-43.33%
Management	1,104	1,212	1,248	1,425	1,419	28.53%
Marketing	465	447	549	684	450	-3.23%
Meeting & Events Planning	.	33	33	30	36	.
Office Administration	305	361	485	557	511	67.54%
Real Estate	890	577	388	430	516	-42.02%
Travel & Tourism	.	.	18	45	39	.
TOTAL	5,926	5,969	6,616	7,256	7,333	23.74%

¹ Students who enroll in more than one course are counted once for each course.

² American Sign Language Interpreter Training began in Fall 2010.

³ Auto Body Collision & Refinishing began in Fall 2008.

NOTE: Disciplines are listed under the current (2010-11) dean area; they may have been listed under another dean area in previous years. A "." means that the program did not offer courses that semester.

Source: Summer 4th Class Day Data (Second summer session)

**Semester Credit Hours¹
Workforce Areas
Summer 2007 - 2011**

Computer Studies & Advanced Technology	Summer 2007	Summer 2008	Summer 2009	Summer 2010	Summer 2011	07-11 % chg
Architectural & Engineering CAD	832	800	920	884	880	5.77%
Computer Information Technology	1,157	924	1,329	1,535	1,433	23.85%
Computer Science	1,947	1,875	2,210	2,345	2,143	10.07%
Electronics & Advanced Technology	377	479	548	651	653	73.21%
Land Surveying Technology/Geomatics	36	.	33	30	.	.
Visual Communication	1,173	1,474	1,938	2,166	2,221	89.34%
TOTAL	5,522	5,552	6,978	7,611	7,330	32.74%
Health Sciences	Summer 2007	Summer 2008	Summer 2009	Summer 2010	Summer 2011	07-11 % chg
Allied Health Sciences	1,039	1,169	1,462	1,596	1,755	68.91%
Dental Hygiene	.	.	36	28	36	.
Diagnostic Medical Imaging Radiology	458	330	406	387	473	3.28%
Emergency Medical Services Professions	368	542	729	667	683	85.60%
Health & Kinesiology	1,183	1,254	1,644	1,695	1,812	53.17%
Health Information Technology	86	128	190	241	389	352.33%
Medical Lab Technology	100	132	168	227	325	225.00%
Nursing - Professional	896	993	1,173	779	817	-8.82%
Nursing - Vocational	675	792	678	725	1,065	57.78%
Occupational Therapy Assistant	80	75	140	180	172	115.00%
Personal Fitness Trainer	8	10	10	12	14	75.00%
Pharmacy Technology	108	168	181	259	223	106.48%
Physical Therapist Assistant	235	259	375	220	152	-35.32%
Sonography	336	342	385	423	439	30.65%
Surgical Technology	270	250	260	280	290	7.41%
TOTAL	5,842	6,444	7,837	7,719	8,645	47.98%
SUBTOTAL FOR WORKFORCE	23,715	24,445	29,200	31,895	33,003	39.17%
GRAND TOTAL (Academic & Workforce)	121,341	126,933	147,061	164,267	160,495	32.27%

¹ Students who enroll in more than one course are counted once for each course.

NOTE: Disciplines are listed under the current (2010-11) dean area; they may have been listed under another dean area in previous years. A "." means that the program did not offer courses that semester.

Source: Summer 4th Class Day Data (Second summer session)

**Contact Hours¹
Academic Areas
Summer 2007 - 2011**

Arts & Humanities	Summer 2007	Summer 2008	Summer 2009	Summer 2010	Summer 2011	07-11 % chg
Arabic	1,760	2,080	1,840	2,080	1,840	4.55%
Art	44,208	47,328	55,152	58,608	56,496	27.80%
Chinese	.	.	.	1,760	1,760	.
Creative Writing	1,968	2,640	2,640	2,016	2,976	51.22%
Dance	4,256	4,064	3,008	5,008	3,984	-6.39%
Drama	5,296	5,376	3,680	11,216	11,440	116.01%
English for Speakers of Other Languages	16,000	16,000	20,160	25,664	27,840	74.00%
French	8,176	8,400	9,280	9,904	7,920	-3.13%
German	4,480	3,888	5,408	5,504	3,520	-21.43%
Humanities	6,768	6,672	6,768	12,000	15,120	123.40%
Japanese	3,200	3,840	3,760	5,680	4,720	47.50%
Latin	.	.	2,400	2,320	1,360	.
Philosophy	35,856	36,000	40,176	43,824	47,328	31.99%
Religion	2,448	2,304	3,456	4,128	2,496	1.96%
Spanish	105,920	103,536	114,416	128,576	111,008	4.80%
TOTAL	240,336	242,128	272,144	318,288	299,808	24.75%

Communications	Summer 2007	Summer 2008	Summer 2009	Summer 2010	Summer 2011	07-11 % chg
English	154,992	161,136	188,448	201,888	182,160	17.53%
Journalism	2,880	3,744	3,552	3,216	4,512	56.67%
Reading - Developmental	11,216	12,496	16,944	23,792	21,136	88.45%
Speech	80,112	83,472	100,224	109,152	115,776	44.52%
Writing - Developmental	8,000	9,152	13,136	16,464	18,784	134.80%
TOTAL	257,200	270,000	322,304	354,512	342,368	33.11%

¹ Students who enroll in more than one course are counted once for each course.

NOTES: Disciplines are listed under the current (2010-11) dean area; they may have been listed under another dean area in previous years. A "." means that the program did not offer courses that semester.

Source: Summer 4th Class Day Data (Second summer session)

**Contact Hours¹
Academic Areas
Summer 2007 - 2011**

Math & Sciences	Summer 2007	Summer 2008	Summer 2009	Summer 2010	Summer 2011	07-11 % chg
Astronomy	5,856	5,376	5,520	9,168	7,872	34.43%
Biology	131,760	142,096	171,728	182,176	189,104	43.52%
Biotechnology	5,888	3,664	4,656	4,480	784	-86.68%
Chemistry	73,344	81,024	91,584	97,152	110,208	50.26%
Engineering	.	448	.	2,480	2,096	.
Environmental Science & Technology	1,872	2,112	2,496	2,928	3,120	66.67%
Geology	15,936	14,688	16,992	22,224	17,616	10.54%
Mathematics	148,160	150,016	169,856	178,320	188,992	27.56%
Mathematics - Developmental	131,184	138,928	163,696	204,112	189,696	44.60%
Physics	80,736	85,920	97,248	101,568	99,072	22.71%
TOTAL	594,736	624,272	723,776	804,608	808,560	35.95%
<hr/>						
Social & Behavioral Sciences	Summer 2007	Summer 2008	Summer 2009	Summer 2010	Summer 2011	07-11 % chg
Anthropology	16,128	15,984	13,968	22,176	16,320	1.19%
Economics	81,504	89,040	101,136	112,176	99,600	22.20%
Educational Instruction	.	1,056	2,352	2,064	1,824	.
Geographic Information Systems ²	224	.
Geography	16,656	17,904	19,440	19,584	17,184	3.17%
Government	200,400	213,168	236,448	260,448	242,720	21.12%
History	226,464	238,896	268,848	285,360	290,400	28.23%
Human Development	2,952	3,096	6,504	12,072	8,544	189.43%
Psychology	56,880	57,696	70,656	92,976	83,808	47.34%
Sociology	22,032	26,400	29,520	40,032	32,448	47.28%
TOTAL	623,016	663,240	748,872	846,888	793,072	27.30%
 SUBTOTAL FOR ACADEMIC	 1,715,288	 1,799,640	 2,067,096	 2,324,296	 2,243,808	 30.81%

¹ Students who enroll in more than one course are counted once for each course.

² Geographic Information Systems began in Fall 2009.

NOTE: Disciplines are listed under the current (2010-11) dean area; they may have been listed under another dean area in previous years. A "." means that the program did not offer courses that semester.

Source: Summer 4th Class Day Data (Second summer session)

**Contact Hours¹
Workforce Areas
Summer 2007 - 2011**

Applied Technologies, Multimedia, & Public Services	Summer 2007	Summer 2008	Summer 2009	Summer 2010	Summer 2011	07-11 % chg
American Sign Lang. Interpreter Train. ²	21,104	.
Auto Body Collision & Refinishing ³	.	.	5,984	2,720	3,968	.
Automotive Technology & Outdoor Powered Equipment	14,976	14,176	15,840	20,192	26,240	75.21%
Building Construction Technology	15,504	14,416	14,144	15,808	15,296	-1.34%
Child Care & Development	9,136	11,168	9,616	16,864	13,120	43.61%
Commercial Music Management	8,992	10,000	10,784	12,704	12,608	40.21%
Criminal Justice	14,016	14,096	18,624	21,824	24,896	77.63%
Fire Protection Technology	2,208	1,296	1,200	2,640	1,056	-52.17%
Heating, AC, & Refrigeration Technology	6,336	4,768	11,904	13,728	15,840	150.00%
Human Services	20,096	20,528	23,840	30,928	12,912	-35.75%
Jewelry	4,224	5,376	5,280	4,800	4,704	11.36%
Music	12,160	12,904	14,264	15,808	14,680	20.72%
Paralegal	5,760	6,816	7,920	9,648	10,656	85.00%
Photographic Technology	14,800	17,728	22,224	26,640	19,088	28.97%
Radio-TV-Film	4,288	4,976	9,376	9,376	9,872	130.22%
Welding Technology	11,424	9,696	12,864	14,720	17,792	55.74%
TOTAL	143,920	147,944	183,864	218,400	223,832	55.53%

Business Studies	Summer 2007	Summer 2008	Summer 2009	Summer 2010	Summer 2011	07-11 % chg
Accounting	46,304	52,672	60,384	58,368	63,456	37.04%
Business & Technical Communications	4,512	3,744	5,360	7,440	6,960	54.26%
Culinary Arts	2,400	1,520	2,960	4,656	8,192	241.33%
Financial Management	5,280	3,264	3,744	4,176	2,784	-47.27%
Hospitality Management	3,328	3,328	3,280	4,304	5,264	58.17%
International Business	2,880	3,120	1,488	720	816	-71.67%
Management	17,664	19,392	19,968	22,800	22,704	28.53%
Marketing	7,440	7,152	8,784	10,944	7,200	-3.23%
Meeting & Events Planning	.	528	528	480	576	.
Office Administration	7,760	9,264	11,776	13,376	12,304	58.56%
Real Estate	14,240	9,232	6,208	6,880	8,256	-42.02%
Travel & Tourism	.	.	480	720	624	.
TOTAL	111,808	113,216	124,960	134,864	139,136	24.44%

¹ Students who enroll in more than one course are counted once for each course.

² American Sign Language Interpreter Training began in Fall 2010.

³ Auto Body Collision & Refinishing began in Fall 2008.

NOTE: Disciplines are listed under the current (2010-11) dean area; they may have been listed under another dean area in previous years. A "." means that the program did not offer courses that semester.

Source: Summer 4th Class Day Data (Second summer session)

**Contact Hours¹
Workforce Areas
Summer 2007 - 2011**

Computer Studies & Advanced Technology	Summer 2007	Summer 2008	Summer 2009	Summer 2010	Summer 2011	07-11 % chg
Architectural & Engineering CAD	19,968	19,200	22,080	21,216	21,120	5.77%
Computer Information Technology	25,248	20,320	29,008	33,376	31,216	23.64%
Computer Science	41,664	40,160	47,264	50,208	45,952	10.29%
Electronics & Advanced Technology	9,504	12,912	13,552	15,760	15,648	64.65%
Land Surveying Technology/Geomatics	576	.	528	480	.	.
Visual Communication	29,552	36,432	47,840	53,584	57,584	94.86%
TOTAL	126,512	129,024	160,272	174,624	171,520	35.58%
Health Sciences	Summer 2007	Summer 2008	Summer 2009	Summer 2010	Summer 2011	07-11 % chg
Allied Health Sciences	16,624	18,704	23,392	25,536	28,080	68.91%
Dental Hygiene	.	.	864	672	864	.
Diagnostic Medical Imaging Radiology	20,768	15,120	18,096	17,504	21,056	1.39%
Emergency Medical Services Professions	11,376	18,208	25,986	25,816	25,181	121.35%
Health & Kinesiology	39,600	41,280	53,952	56,496	59,328	49.82%
Health Information Technology	2,192	3,248	4,016	5,120	7,664	249.64%
Medical Lab Technology	6,448	7,264	9,632	13,120	20,672	220.60%
Nursing - Professional	33,840	36,864	43,520	29,072	32,016	-5.39%
Nursing - Vocational	23,760	27,552	23,824	25,216	37,120	56.23%
Occupational Therapy Assistant	4,608	2,960	5,440	9,168	8,000	73.61%
Personal Fitness Trainer	896	1,120	1,120	1,344	1,568	75.00%
Pharmacy Technology	3,568	5,344	5,392	8,624	8,112	127.35%
Physical Therapist Assistant	8,480	9,760	12,800	8,896	4,256	-49.81%
Sonography	10,224	9,904	11,296	12,112	12,800	25.20%
Surgical Technology	10,800	10,000	10,400	11,200	11,600	7.41%
TOTAL	193,184	207,328	249,730	249,896	278,317	44.07%
SUBTOTAL FOR WORKFORCE	575,424	597,512	718,826	777,784	812,805	41.25%
GRAND TOTAL (Academic & Workforce)	2,290,712	2,397,152	2,785,922	3,102,080	3,056,613	33.44%

¹ Students who enroll in more than one course are counted once for each course.

NOTE: Disciplines are listed under the current (2010-11) dean area; they may have been listed under another dean area in previous years. A "." means that the program did not offer courses that semester.

Source: Summer 4th Class Day Data (Second summer session)

**Distance Learning¹ Course Enrollment and Contact Hours
Summer 2007 - 2011**

	Summer 2007	Summer 2008	Summer 2009	Summer 2010	Summer 2011	07-11 % chg
COURSE ENROLLMENT²						
Directed Study (DIR)	98	43	50	43	.	.
Hybrid (HYD) ³	.	302	361	358	540	.
Instructional Television (ITV)	619	683	548	569	346	-44.10%
Interactive Video (IVC) ⁴	27
Online (ONL)	8,520	8,588	9,380	10,393	11,089	30.15%
Print-Based (PRN)	288	315	291	353	359	24.65%
Unknown ⁵	.	33	34	.	.	.
TOTAL	9,552	9,964	10,664	11,716	12,334	29.12%

	Summer 2007	Summer 2008	Summer 2009	Summer 2010	Summer 2011	07-11 % chg
CONTACT HOURS⁶						
Directed Study (DIR)	12,224	6,080	8,256	6,272	.	.
Hybrid (HYD) ³	.	14,496	17,328	18,448	26,448	.
Instructional Television (ITV)	29,776	32,512	25,616	26,592	16,208	-45.57%
Interactive Video (IVC) ⁴	2,160
Online (ONL)	422,880	425,792	470,528	517,048	550,216	30.11%
Print-Based (PRN)	13,824	15,120	13,968	16,944	17,232	24.65%
Unknown ⁵	.	2,608	2,720	.	.	.
TOTAL	480,864	496,608	538,416	585,304	610,104	26.88%

¹ Distance Learning includes non-traditional courses offered through Directed Study, Hybrid courses, Instructional Television, Online, and Print-Based courses. Prior to Fall 2006, Distance Learning also included courses offered in Interactive Video Class format.

² Students who enroll in multiple courses are counted once for each course.

³ Distance Learning Hybrids (HYD) offer students the majority (51% or more) of their course work online via the Internet, with some classroom and/or laboratory meeting times.

⁴ Prior to Summer 2008, Interactive Video Classes were classified as Distance Learning.

⁵ Delivery method not listed.

⁶ An instructional unit of time in which a student has contact with an instructor; includes lecture and/or laboratory time.

Source: Summer 4th Class Day Data (Second summer session)

**Student Headcount, Course Enrollment, Contact Hours, and Semester
Credit Hours by Location
Fall 2011**

Location	Headcount¹	Course Enrollment²	Contact Hours³	Semester Credit Hours⁴
Cypress Creek Campus	5,603	11,099	616,400	33,079
Eastview Campus	4,198	7,796	527,564	22,238
Northridge Campus	10,252	20,326	1,205,800	60,682
Pinnacle Campus	3,532	6,999	380,072	21,001
Rio Grande Campus	8,676	16,991	976,984	52,009
Riverside Campus	7,337	14,217	831,360	42,491
Round Rock Campus	5,100	9,980	586,440	29,767
South Austin	3,996	6,765	372,728	20,250
Distance Learning ⁵	9,741	14,994	775,560	44,514
Centers ⁶	2,209	3,535	185,824	10,732
Site-Based Instruction ⁷	2,702	3,996	237,688	11,502

¹ Students who attend multiple locations are counted once at each location.

² Students who enroll in multiple courses are counted once for each course.

³ A contact hour is an instructional unit of time in which a student has contact with an instructor; includes lecture and/or laboratory time.

⁴ Semester Credit Hour (SCH) is a unit of measure of instruction consisting of 60 minutes of which 50 minutes must be directed instruction.

⁵ Distance Learning includes non-traditional courses offered through Directed Studies, Hybrid courses, Instructional Television, Online, and Print-Based courses.

⁶ Locations, other than campuses, that are staffed, have regular posted hours, and offer credit courses on a regular basis (every semester).

⁷ Various credit and non-credit classes and training offered for businesses, government entities, high schools, correctional institutions, and community groups.

Source: Fall 12th Class Day Data

**Course Enrollment¹
Academic Areas
Fall 2007 - 2011**

Arts & Humanities	Fall 2007	Fall 2008	Fall 2009	Fall 2010	Fall 2011	07-11 % chg
Arabic	25	38	45	44	53	112.00%
Art	1,514	1,655	1,897	2,323	2,506	65.52%
Chinese	34	33	36	32	28	-17.65%
Creative Writing	160	158	206	234	229	43.13%
Dance	139	145	161	200	214	53.96%
Drama	363	423	500	561	553	52.34%
English for Speakers of Other Languages	647	696	940	974	1,059	63.68%
French	285	311	349	350	322	12.98%
German	103	108	110	145	114	10.68%
Humanities	268	330	427	500	684	155.22%
Japanese	176	185	210	236	221	25.57%
Latin	75	59	85	83	74	-1.33%
Philosophy	1,964	2,062	2,162	2,391	2,321	18.18%
Religion	53	70	160	129	113	113.21%
Russian	52	45	55	54	43	-17.31%
Spanish	2,390	2,349	2,505	2,683	2,494	4.35%
TOTAL	8,248	8,667	9,848	10,939	11,028	33.71%
Communications	Fall 2007	Fall 2008	Fall 2009	Fall 2010	Fall 2011	07-11 % chg
English	9,521	9,965	10,967	11,802	12,045	26.51%
Journalism	213	219	243	276	289	35.68%
Reading - Developmental	1,094	1,159	1,267	1,484	1,604	46.62%
Speech	2,774	2,995	3,371	3,506	3,676	32.52%
Study Skills	54	71	72	104	99	83.33%
Writing - Developmental	667	704	811	966	1,083	62.37%
TOTAL	14,323	15,113	16,731	18,138	18,796	31.23%

¹ Students who enroll in multiple courses are counted once for each course.

NOTE: Disciplines are listed under the current (2011-12) dean area; they may have been included in another dean area in previous years.

Source: Fall 12th Class Day Data

**Course Enrollment¹
Academic Areas
Fall 2007 - 2011**

Math & Sciences	Fall 2007	Fall 2008	Fall 2009	Fall 2010	Fall 2011	07-11 % chg
Astronomy	205	233	305	379	408	99.02%
Biology	4,455	5,002	6,029	6,775	6,725	50.95%
Biotechnology	32	46	37	74	67	109.38%
Chemistry	1,612	2,741	3,175	3,953	4,079	153.04%
Engineering	117	105	108	162	157	34.19%
Environmental Science & Technology	207	249	266	273	236	14.01%
Geology	587	606	680	697	621	5.79%
Mathematics	5,980	6,275	7,038	7,639	7,440	24.41%
Mathematics - Developmental	6,775	7,391	8,162	9,109	8,822	30.21%
Physics	849	806	919	1,066	1,023	20.49%
TOTAL	20,819	23,454	26,719	30,127	29,578	42.07%
Social & Behavioral Sciences	Fall 2007	Fall 2008	Fall 2009	Fall 2010	Fall 2011	07-11 % chg
Anthropology	660	635	956	1,058	970	46.97%
Economics	2,038	2,254	2,608	2,580	2,406	18.06%
Education Instruction	170	208	243	321	186	9.41%
Geography	611	649	803	872	686	12.27%
Geographic Information Systems ²	.	.	.	56	50	.
Government	5,567	6,416	7,399	7,663	7,361	32.23%
History	6,912	7,403	8,094	8,586	8,333	20.56%
Human Development	1,255	1,243	1,407	1,582	1,848	47.25%
Military Science	17	9	27	27	23	35.29%
Psychology	3,863	4,162	4,733	5,331	5,411	40.07%
Sociology	1,527	1,657	1,949	2,361	2,330	52.59%
TOTAL	22,620	24,636	28,219	30,437	29,604	30.88%
SUBTOTAL FOR ACADEMIC	66,010	71,870	81,517	89,641	89,006	34.84%

¹ Students who enroll in multiple courses are counted once for each course.

² Geographic Information Systems began in Fall 2009, however enrollments were reported under Geography until Fall 2010.

NOTE: Disciplines are listed under the current (2011-12) dean area; they may have been included in another dean area in previous years.
A "." means that the program did not offer courses that semester.

Source: Fall 12th Class Day Data

**Course Enrollment¹
Workforce Areas
Fall 2007 - 2011**

Applied Technologies, Multimedia, & Public Services	Fall 2007	Fall 2008	Fall 2009	Fall 2010	Fall 2011	07-11 % chg
American Sign Language Interpreter Training ²	.	.	.	517	553	.
Auto Body Collision & Refinishing ³	.	.	93	113	123	.
Automotive Technology & Outdoor Powered Equipment	422	494	553	631	665	57.58%
Building Construction Technology	371	363	384	492	467	25.88%
Child Care & Development	441	459	395	479	414	-6.12%
Commercial Music Management	493	504	526	575	559	13.39%
Criminal Justice	717	699	892	1072	1156	61.23%
Fire Protection Technology	280	245	330	312	310	10.71%
Heating, AC, & Refrigeration Technology	203	202	263	271	281	38.42%
Human Services	652	695	766	438	478	-26.69%
Jewelry	125	130	113	113	131	4.80%
Music	673	750	824	897	850	26.30%
Paralegal	301	291	308	350	358	18.94%
Photographic Technology	449	453	524	579	585	30.29%
Radio-TV-Film	241	266	370	382	403	67.22%
Welding Technology	324	313	354	405	419	29.32%
TOTAL	5692	5864	6695	7626	7752	36.19%
Business Studies	Fall 2007	Fall 2008	Fall 2009	Fall 2010	Fall 2011	07-11 % chg
Accounting	1,343	1,425	1,612	1,788	1,732	28.97%
Business & Technical Communications	149	152	192	251	363	143.62%
Culinary Arts	225	209	259	334	367	63.11%
Financial Management	183	114	147	178	144	-21.31%
Hospitality Management	173	179	206	238	239	38.15%
International Business	82	92	93	98	98	19.51%
Management	1,390	1,296	1,493	1,600	1,480	6.47%
Marketing	476	452	426	536	451	-5.25%
Meeting & Events Planning	47	36	41	50	36	-23.40%
Office Administration	353	385	517	540	470	33.14%
Real Estate	461	369	285	330	266	-42.30%
Travel & Tourism	16	25	31	35	42	162.50%
TOTAL	4,898	4,734	5,302	5,978	5,688	16.13%

¹ Students who enroll in multiple courses are counted once for each course.

² American Sign Language Interpreter Training began in Fall 2010.

³ Auto Body Collision & Refinishing began in Fall 2008, however enrollments were reported under Automotive Technology until Summer 2009.

NOTE: Disciplines are listed under the current (2011-12) dean area; they may have been included in another dean area in previous years.
A "." means that the program did not offer courses that semester.

Source: Fall 12th Class Day Data

**Course Enrollment¹
Workforce Areas
Fall 2007 - 2011**

Computer Studies & Advanced Technology	Fall 2007	Fall 2008	Fall 2009	Fall 2010	Fall 2011	07-11 % chg
Architectural & Engineering CAD	488	498	541	539	512	4.92%
Computer Information Technology	1,095	1,156	1,406	1,547	1,564	42.83%
Computer Science	1,537	1,453	1,647	1,750	1,699	10.54%
Electronics & Advanced Technology	265	297	371	393	400	50.94%
Land Surveying Technology/Geomatics	45	31	40	16	41	-8.89%
Visual Communication	1,044	1,226	1,383	1,532	1,501	43.77%
TOTAL	4,474	4,661	5,388	5,777	5,717	27.78%
Health Sciences	Fall 2007	Fall 2008	Fall 2009	Fall 2010	Fall 2011	07-11 % chg
Allied Health Sciences	816	927	1,025	1,287	1,232	50.98%
Dental Hygiene	152	156	143	129	144	-5.26%
Diagnostic Medical Imaging Radiology	253	254	302	308	340	34.39%
Emergency Medical Services Professions	258	292	325	349	388	50.39%
Health & Kinesiology	2,064	2,122	2,493	2,676	2,696	30.62%
Health Information Technology	64	63	119	136	174	171.88%
Medical Lab Technology	94	89	115	151	194	106.38%
Nursing - Professional	1,668	1,840	2,070	2,300	2,164	29.74%
Nursing - Vocational	347	339	423	355	446	28.53%
Occupational Therapy Assistant	39	80	114	103	120	207.69%
Personal Fitness Trainer	37	33	39	46	51	37.84%
Pharmacy Technology	85	110	145	150	143	68.24%
Physical Therapist Assistant	84	82	131	121	119	41.67%
Sonography	169	185	195	184	206	21.89%
Surgical Technology	80	84	88	118	118	47.50%
TOTAL	6,210	6,656	7,727	8,413	8,535	37.44%
SUBTOTAL FOR WORKFORCE	21,274	21,915	25,112	27,794	27,692	30.17%
GRAND TOTAL (Academic & Workforce)	87,284	93,785	106,629	117,435	116,698	33.70%

¹ Students who enroll in multiple courses are counted once for each course.

NOTE: Disciplines are listed under the current (2011-12) dean area; they may have been included in another dean area in previous years.

Source: Fall 12th Class Day Data

Semester Credit Hours¹
Academic Areas
Fall 2007 - 2011

Arts & Humanities	Fall 2007	Fall 2008	Fall 2009	Fall 2010	Fall 2011	07-11 % chg
Arabic	125	162	185	184	245	96.00%
Art	4,542	4,965	5,691	6,969	7,518	65.52%
Chinese	148	141	154	138	128	-13.51%
Creative Writing	480	474	618	702	687	43.13%
Dance	246	255	271	357	399	62.20%
Drama	1,073	1,259	1,480	1,667	1,641	52.94%
English for Speakers of Other Languages	1,941	2,088	2,820	2,922	3,177	63.68%
French	1,337	1,457	1,593	1,582	1,488	11.29%
German	497	524	522	685	548	10.26%
Humanities	804	990	1,281	1,500	2,052	155.22%
Japanese	806	831	962	1,074	1,023	26.92%
Latin	355	295	397	391	356	0.28%
Philosophy	5,892	6,186	6,486	7,173	6,963	18.18%
Religion	159	210	480	387	339	113.21%
Russian	236	209	257	246	205	-13.14%
Spanish	11,056	10,937	11,633	12,529	11,684	5.68%
TOTAL	29,697	30,983	34,830	38,506	38,453	29.48%
Communications	Fall 2007	Fall 2008	Fall 2009	Fall 2010	Fall 2011	07-11 % chg
English	28,563	29,895	32,901	35,406	36,135	26.51%
Journalism	639	657	729	828	867	35.68%
Reading - Developmental	3,282	3,477	3,801	4,452	4,812	46.62%
Speech	8,322	8,985	10,113	10,518	11,028	32.52%
Study Skills	139	197	203	274	268	92.81%
Writing - Developmental	1,903	2,054	2,373	2,802	3,025	58.96%
TOTAL	42,848	45,265	50,120	54,280	56,135	31.01%

¹ Students who enroll in multiple courses are counted once for each course.

NOTE: Disciplines are listed under the current (2011-12) dean area; they may have been included in another dean area in previous years.

Source: Fall 12th Class Day Data

**Semester Credit Hours¹
Academic Areas
Fall 2007 - 2011**

Math & Sciences	Fall 2007	Fall 2008	Fall 2009	Fall 2010	Fall 2011	07-11 % chg
Astronomy	639	716	961	1,197	1,304	104.07%
Biology	13,843	15,451	18,316	20,389	20,444	47.68%
Biotechnology	96	129	104	242	209	117.71%
Chemistry	6,448	5,497	6,351	7,925	8,173	26.75%
Engineering	291	265	271	398	372	27.84%
Environmental Science & Technology	628	753	814	827	737	17.36%
Geology	2,050	2,105	2,380	2,440	2,200	7.32%
Mathematics	19,425	20,374	22,840	24,722	24,128	24.21%
Mathematics - Developmental	20,280	21,706	23,818	26,485	25,710	26.78%
Physics	3,385	3,209	3,655	4,246	4,092	20.89%
TOTAL	67,085	70,205	79,510	88,871	87,369	30.24%
<hr/>						
Social & Behavioral Sciences	Fall 2007	Fall 2008	Fall 2009	Fall 2010	Fall 2011	07-11 % chg
Anthropology	1,980	1,905	2,868	3,174	2,910	46.97%
Economics	6,114	6,762	7,824	7,740	7,218	18.06%
Education Instruction	510	624	729	963	558	9.41%
Geography	1,874	2,019	2,469	2,665	2,125	13.39%
Geographic Information Systems ²	.	.	.	175	175	.
Government	16,701	19,248	22,197	22,989	22,083	32.23%
History	20,736	22,209	24,282	25,758	24,999	20.56%
Human Development	1,903	1,919	2,243	2,614	3,018	58.59%
Military Science	34	18	54	54	46	35.29%
Psychology	11,589	12,486	14,199	15,993	16,233	40.07%
Sociology	4,581	4,971	5,847	7,083	6,990	52.59%
TOTAL	66,022	72,161	82,712	89,208	86,355	30.80%
 SUBTOTAL FOR ACADEMIC	 205,652	 218,614	 247,172	 270,865	 268,312	 30.47%

¹ Students who enroll in multiple courses are counted once for each course.

² Geographic Information Systems began in Fall 2009, however enrollments were reported under Geography until Fall 2010.

NOTE: Disciplines are listed under the current (2011-12) dean area; they may have been included in another dean area in previous years.
A "." means that the program did not offer courses that semester.

Source: Fall 12th Class Day Data

**Semester Credit Hours¹
Workforce Areas
Fall 2007 - 2011**

Applied Technologies, Multimedia, & Public Services	Fall 2007	Fall 2008	Fall 2009	Fall 2010	Fall 2011	07-11 % chg
American Sign Language Interpreter Training ²	.	.	.	1,889	2,038	.
Auto Body Collision & Refinishing ³	.	.	318	385	438	.
Automotive Technology & Outdoor Powered Equipment	1,677	1,957	2,212	2,524	2,660	58.62%
Building Construction Technology	1,374	1,339	1,414	1,780	1,693	23.22%
Child Care & Development	1,452	1,495	1,303	1,567	1,365	-5.99%
Commercial Music Management	1,457	1,504	1,546	1,697	1,670	14.62%
Criminal Justice	2,155	2,120	2,735	3,261	3,518	63.25%
Fire Protection Technology	983	855	1,155	1,082	1,070	8.85%
Heating, AC, & Refrigeration Technology	804	788	1,028	1,056	1,096	36.32%
Human Services	2,274	2,349	2,566	1,336	1,451	-36.19%
Jewelry	500	520	452	452	524	4.80%
Music	1,475	1,640	1,813	1,915	1,934	31.12%
Paralegal	903	873	924	1,050	1,074	18.94%
Photographic Technology	1,410	1,410	1,642	1,788	1,785	26.60%
Radio-TV-Film	723	798	1,110	1,146	1,209	67.22%
Welding Technology	1,296	1,252	1,416	1,620	1,676	29.32%
TOTAL	18,483	18,900	21,634	24,548	25,201	36.35%
Business Studies	Fall 2007	Fall 2008	Fall 2009	Fall 2010	Fall 2011	07-11 % chg
Accounting	3,986	4,359	4,926	5,446	5,272	32.26%
Business & Technical Communications	454	456	584	771	1,114	145.37%
Culinary Arts	609	564	691	890	1,010	65.85%
Financial Management	549	342	441	534	432	-21.31%
Hospitality Management	519	537	618	714	717	38.15%
International Business	246	276	279	294	294	19.51%
Management	4,170	3,888	4,479	4,800	4,440	6.47%
Marketing	1,428	1,356	1,278	1,608	1,353	-5.25%
Meeting & Events Planning	141	108	123	150	108	-23.40%
Office Administration	865	957	1,260	1,375	1,214	40.35%
Real Estate	1,500	1,120	937	1,086	869	-42.07%
Travel & Tourism	48	75	93	105	126	162.50%
TOTAL	14,515	14,038	15,709	17,773	16,949	16.77%

¹ Students who enroll in multiple courses are counted once for each course.

² American Sign Language Interpreter Training began in Fall 2010.

³ Auto Body Collision & Refinishing began in Fall 2008, however enrollments were reported under Automotive Technology until Summer 2009.

NOTE: Disciplines are listed under the current (2011-12) dean area; they may have been included in another dean area in previous years.
A "." means that the program did not offer courses that semester.

Source: Fall 12th Class Day Data

**Semester Credit Hours¹
Workforce Areas
Fall 2007 - 2011**

Computer Studies & Advanced Technology	Fall 2007	Fall 2008	Fall 2009	Fall 2010	Fall 2011	07-11 % chg
Architectural & Engineering CAD	1,952	1,992	2,164	2,156	2,048	4.92%
Computer Information Technology	3,473	3,670	4,465	4,893	4,947	42.44%
Computer Science	4,673	4,413	5,018	5,332	5,181	10.87%
Electronics & Advanced Technology	956	1,077	1,321	1,404	1,421	48.64%
Land Surveying Technology/Geomatics	135	93	123	53	124	-8.15%
Visual Communication	3,929	4,617	5,203	5,648	5,521	40.52%
TOTAL	15,118	15,862	18,294	19,486	19,242	27.28%
Health Sciences	Fall 2007	Fall 2008	Fall 2009	Fall 2010	Fall 2011	07-11 % chg
Allied Health Sciences	2,007	2,249	2,485	3,082	2,965	47.73%
Dental Hygiene	390	399	376	340	378	-3.08%
Diagnostic Medical Imaging Radiology	729	730	855	888	978	34.16%
Emergency Medical Services Professions	689	780	866	912	1,015	47.31%
Health & Kinesiology	2,745	2,811	3,319	3,560	3,537	28.85%
Health Information Technology	181	176	350	384	470	159.67%
Medical Lab Technology	224	219	291	393	516	130.36%
Nursing - Professional	3,974	4,304	4,673	5,116	5,045	26.95%
Nursing - Vocational	1,016	993	1,249	1,052	1,382	36.02%
Occupational Therapy Assistant	113	240	323	297	340	200.88%
Personal Fitness Trainer	124	112	132	152	169	36.29%
Pharmacy Technology	263	309	399	415	394	49.81%
Physical Therapist Assistant	319	310	444	434	420	31.66%
Sonography	462	503	525	500	554	19.91%
Surgical Technology	280	300	312	398	398	42.14%
TOTAL	13,516	14,435	16,599	17,923	18,561	37.33%
SUBTOTAL FOR WORKFORCE	61,632	63,235	72,236	79,730	79,953	29.73%
GRAND TOTAL (Academic & Workforce)	267,284	281,849	319,408	350,595	348,265	30.30%

¹ Students who enroll in multiple courses are counted once for each course.

NOTE: Disciplines are listed under the current (2011-12) dean area; they may have been included in another dean area in previous years.

Source: Fall 12th Class Day Data

**Contact Hours¹
Academic Areas
Fall 2007 - 2011**

Arts & Humanities	Fall 2007	Fall 2008	Fall 2009	Fall 2010	Fall 2011	07-11 % chg
Arabic	2,000	2,592	2,960	2,944	3,920	96.00%
Art	107,120	113,088	125,280	149,568	161,232	50.52%
Chinese	2,368	2,256	2,464	2,208	2,048	-13.51%
Creative Writing	7,680	7,584	9,888	11,232	10,992	43.13%
Dance	8,880	9,264	10,160	12,320	12,992	46.31%
Drama	21,936	24,208	29,152	33,072	31,296	42.67%
English for Speakers of Other Languages	41,408	44,544	60,352	62,480	67,968	64.14%
French	21,392	23,312	25,488	25,312	23,808	11.29%
German	7,952	8,384	8,352	10,960	8,768	10.26%
Humanities	12,864	15,840	20,496	24,000	32,832	155.22%
Japanese	12,896	13,296	15,392	17,184	16,368	26.92%
Latin	5,680	4,720	6,352	6,256	5,696	0.28%
Philosophy	94,272	98,976	103,776	114,768	111,408	18.18%
Religion	2,544	3,360	7,680	6,192	5,424	113.21%
Russian	3,776	3,344	4,112	3,936	3,280	-13.14%
Spanish	177,280	175,120	186,256	200,640	186,944	5.45%
TOTAL	530,048	549,888	618,160	683,072	684,976	29.23%

Communications	Fall 2007	Fall 2008	Fall 2009	Fall 2010	Fall 2011	07-11 % chg
English	457,008	478,320	526,416	566,496	578,160	26.51%
Journalism	10,416	10,704	12,064	13,664	14,496	39.17%
Reading - Developmental	60,496	63,600	70,544	82,704	89,264	47.55%
Speech	133,152	143,760	161,808	168,288	176,448	32.52%
Study Skills	2,224	3,152	3,248	4,384	4,288	92.81%
Writing - Developmental	36,544	39,312	45,088	53,264	56,528	54.68%
TOTAL	699,840	738,848	819,168	888,800	919,184	31.34%

¹ Students who enroll in multiple courses are counted once for each course.

NOTE: Disciplines are listed under the current (2011-12) dean area; they may have been included in another dean area in previous years.

Source: Fall 12th Class Day Data

ENROLLMENT BY AREA

**Contact Hours¹
Academic Areas
Fall 2007 - 2011**

Math & Sciences	Fall 2007	Fall 2008	Fall 2009	Fall 2010	Fall 2011	07-11 % chg
Astronomy	10,992	12,000	16,848	21,072	23,424	113.10%
Biology	312,560	342,880	402,048	450,512	448,816	43.59%
Biotechnology	3,264	3,760	3,056	7,488	5,360	64.22%
Chemistry	154,752	131,568	152,400	189,744	195,792	26.52%
Engineering	4,656	4,240	4,336	6,368	5,952	27.84%
Environmental Science & Technology	10,272	12,240	13,536	13,488	13,200	28.50%
Geology	42,048	42,864	48,960	50,208	45,984	9.36%
Mathematics	310,880	326,032	365,552	395,808	386,208	24.23%
Mathematics - Developmental	432,144	464,928	510,160	565,120	546,784	26.53%
Physics	80,976	76,656	87,216	101,472	98,208	21.28%
TOTAL	1,362,544	1,417,168	1,604,112	1,801,280	1,769,728	29.88%
Social & Behavioral Sciences	Fall 2007	Fall 2008	Fall 2009	Fall 2010	Fall 2011	07-11 % chg
Anthropology	31,680	30,480	45,888	50,784	46,704	47.42%
Economics	97,824	108,192	125,184	123,840	115,488	18.06%
Education Instruction	8,160	9,984	11,664	15,408	8,928	9.41%
Geography	31,296	34,608	41,552	44,208	36,144	15.49%
Geographic Information Systems ²	.	.	.	4,240	4,144	.
Government	267,216	307,968	355,792	368,784	354,288	32.58%
History	331,776	355,344	388,512	412,128	399,984	20.56%
Human Development	37,896	37,944	43,800	50,352	58,392	54.08%
Military Science	816	432	1,296	1,296	1,104	35.29%
Psychology	185,424	199,776	227,328	255,936	259,728	40.07%
Sociology	73,296	79,536	93,552	113,424	111,840	52.59%
TOTAL	1,065,384	1,164,264	1,334,568	1,440,400	1,396,744	31.10%
SUBTOTAL FOR ACADEMIC	3,657,816	3,870,168	4,376,008	4,813,552	4,770,632	30.42%

¹ Students who enroll in multiple courses are counted once for each course.

² Geographic Information Systems began in Fall 2009, however enrollments were reported under Geography until Fall 2010.

NOTE: Disciplines are listed under the current (2011-12) dean area; they may have been included in another dean area in previous years.
A "." means that the program did not offer courses that semester.

Source: Fall 12th Class Day Data

**Contact Hours¹
Workforce Areas
Fall 2007 - 2011**

Applied Technologies, Multimedia, & Public Services	Fall 2007	Fall 2008	Fall 2009	Fall 2010	Fall 2011	07-11 % chg
American Sign Language Interpreter Training ²	.	.	.	46,736	50,368	.
Auto Body Collision & Refinishing ³	.	.	7,840	9,344	11,424	.
Automotive Technology & Outdoor Powered Equipment	43,136	49,664	55,872	62,560	66,432	54.01%
Building Construction Technology	31,936	31,584	32,720	40,320	38,624	20.94%
Child Care & Development	32,624	33,232	29,376	36,720	30,480	-6.57%
Commercial Music Management	30,880	31,888	33,664	36,416	36,048	16.74%
Criminal Justice	34,480	35,072	45,488	54,672	57,696	67.33%
Fire Protection Technology	21,248	18,432	24,816	22,896	22,496	5.87%
Heating, AC, & Refrigeration Technology	19,616	19,712	25,632	26,464	27,424	39.80%
Human Services	48,816	50,448	55,648	24,192	25,392	-47.98%
Jewelry	12,000	12,480	10,848	10,848	12,576	4.80%
Music	30,328	33,248	37,704	40,968	38,608	27.30%
Paralegal	18,048	15,888	17,184	19,440	21,024	16.49%
Photographic Technology	54,256	55,824	63,472	71,296	72,848	34.27%
Radio-TV-Film	15,280	16,832	23,808	24,464	26,432	72.98%
Welding Technology	31,104	30,048	33,984	38,880	40,352	29.73%
TOTAL	423,752	434,352	498,056	566,216	578,224	36.45%

Business Studies	Fall 2007	Fall 2008	Fall 2009	Fall 2010	Fall 2011	07-11 % chg
Accounting	81,680	89,360	98,864	110,656	107,744	31.91%
Business and Technical Communications	7,552	7,296	9,632	12,336	18,400	143.64%
Culinary Arts	14,784	13,504	16,720	21,488	25,312	71.21%
Financial Management	8,784	5,472	7,056	8,544	6,912	-21.31%
Hospitality Management	9,776	10,224	11,696	14,768	13,952	42.72%
International Business	4,224	5,280	4,464	4,704	4,704	11.36%
Management	67,440	62,688	73,104	77,760	71,520	6.05%
Marketing	22,848	21,696	20,448	25,728	21,648	-5.25%
Meeting & Events Planning	2,256	1,728	1,968	2,400	1,728	-23.40%
Office Administration	20,784	22,704	30,288	32,272	28,656	37.88%
Real Estate	24,000	17,920	14,992	17,376	13,904	-42.07%
Travel & Tourism	896	1,200	1,632	1,792	2,240	150.00%
TOTAL	265,024	259,072	290,864	329,824	316,720	19.51%

¹ Students who enroll in multiple courses are counted once for each course.

² American Sign Language Interpreter Training began in Fall 2010.

³ Auto Body Collision & Refinishing began in Fall 2008, however enrollments were reported under Automotive Technology until Summer 2009.

NOTE: Disciplines are listed under the current (2011-12) dean area; they may have been included in another dean area in previous years.
A "." means that the program did not offer courses that semester.

Source: Fall 12th Class Day Data

**Contact Hours¹
Workforce Areas
Fall 2007 - 2011**

Computer Studies & Advanced Technology	Fall 2007	Fall 2008	Fall 2009	Fall 2010	Fall 2011	07-11 % chg
Architectural & Engineering CAD	46,848	47,808	51,936	51,744	49,152	4.92%
Computer Information Technology	80,368	84,512	101,632	110,912	113,440	41.15%
Computer Science	100,352	94,720	107,872	114,624	111,424	11.03%
Electronics & Advanced Technology	23,424	26,880	32,096	34,240	34,912	49.04%
Land Surveying Technology/Geomatics	2,544	1,488	3,120	1,808	2,656	4.40%
Visual Communication	97,216	114,016	128,608	141,840	138,816	42.79%
TOTAL	350,752	369,424	425,264	455,168	450,400	28.41%
<hr/>						
Health Sciences	Fall 2007	Fall 2008	Fall 2009	Fall 2010	Fall 2011	07-11 % chg
Allied Health Sciences	32,112	35,984	39,760	49,312	47,440	47.73%
Dental Hygiene	13,312	13,584	13,344	12,256	13,536	1.68%
Diagnostic Medical Imaging Radiology	22,256	21,024	27,568	26,048	31,968	43.64%
Emergency Medical Services Professions	25,264	27,552	30,338	30,691	35,708	41.34%
Health & Kinesiology	99,072	101,856	119,664	128,448	129,408	30.62%
Health Information Technology	3,520	4,064	6,864	7,392	10,784	206.36%
Medical Lab Technology	9,040	8,720	11,952	16,640	21,760	140.71%
Nursing - Professional	137,904	150,768	161,872	175,712	174,368	26.44%
Nursing - Vocational	31,456	30,912	37,936	32,208	44,320	40.90%
Occupational Therapy Assistant	3,664	7,520	10,640	9,632	11,200	205.68%
Personal Fitness Trainer	2,400	2,208	2,592	2,880	3,216	34.00%
Pharmacy Technology	5,408	7,824	10,352	10,224	9,344	72.78%
Physical Therapist Assistant	13,024	12,768	14,800	13,520	13,392	2.83%
Sonography	17,776	18,256	19,152	19,552	20,768	16.83%
Surgical Technology	9,520	10,320	10,688	13,232	13,232	38.99%
TOTAL	425,728	453,360	517,522	547,747	580,444	36.34%
 SUBTOTAL FOR WORKFORCE	 1,465,256	 1,516,208	 1,731,706	 1,898,955	 1,925,788	 31.43%
 GRAND TOTAL (Academic & Workforce)	 5,123,072	 5,386,376	 6,107,714	 6,712,507	 6,696,420	 30.71%

¹ Students who enroll in multiple courses are counted once for each course.

NOTE: Disciplines are listed under the current (2011-12) dean area; they may have been included in another dean area in previous years.

Source: Fall 12th Class Day Data

**Distance Learning¹ Course Enrollment and Contact Hours
Fall 2007 - 2011**

COURSE ENROLLMENT²	Fall 2007	Fall 2008	Fall 2009	Fall 2010	Fall 2011	07-11 % chg
Directed Study (DIR)	325	208	216	237	208	-36.00%
Hybrid (HYD) ³	.	324	423	931	1,066	.
Instructional Television (ITV)	977	947	804	719	445	-54.45%
Online (ONL)	9,136	9,668	11,447	12,096	12,897	41.17%
Print-Based (PRN)	357	362	336	386	378	5.88%
Unknown ⁴	15
TOTAL	10,810	11,509	13,226	14,369	14,994	38.70%

CONTACT HOURS⁵	Fall 2007	Fall 2008	Fall 2009	Fall 2010	Fall 2011	07-11 % chg
Directed Study (DIR)	29,568	20,560	19,552	21,312	20,912	-29.27%
Hybrid (HYD) ³	.	15,552	19,776	48,368	55,280	.
Instructional Television (ITV)	46,608	45,680	38,528	35,152	20,640	-55.72%
Online (ONL)	474,624	501,536	589,152	618,200	660,584	39.18%
Print-Based (PRN)	17,408	17,376	16,128	18,528	18,144	4.23%
Unknown ⁴	960
TOTAL	569,168	600,704	683,136	741,560	775,560	36.26%

¹ Distance Learning includes non-traditional courses offered through Directed Study, Hybrid courses, Instructional Television, Online, and Print-Based courses.

² Students who enroll in multiple courses are counted once for each course.

³ Distance Learning Hybrids (HYD), began in Fall 2008, offer students the majority (51% or more) of their course work online via the Internet, with some classroom and/or laboratory meeting times.

⁴ Delivery method not listed.

⁵ A contact hour is an instructional unit of time in which a student has contact with an instructor; includes lecture and/or laboratory time.

Source: Fall 12th Class Day Data

**Student Headcount, Course Enrollment, Contact Hours, and Semester
Credit Hours by Location
Spring 2012**

Location	Headcount¹	Course Enrollment²	Contact Hours³	Semester Credit Hours
Cypress Creek Campus	5,275	9,893	546,640	29,010
Eastview Campus	4,013	7,441	526,914	21,050
Northridge Campus	9,921	19,225	1,149,264	57,552
Pinnacle Campus	3,333	6,139	337,584	18,309
Rio Grande Campus	8,672	16,603	965,760	50,816
Riverside Campus	7,263	13,737	815,416	41,294
Round Rock Campus	5,121	10,043	601,760	30,121
South Austin	3,588	5,829	324,696	17,589
Distance Learning ⁴	9,744	15,025	786,848	45,154
Centers ⁵	2,239	3,584	187,488	10,859
Site-Based Instruction ⁶	3,001	4,169	251,640	12,080

¹ Students who attend multiple locations are counted once at each location.

² Students who enroll in multiple courses are counted once for each course.

³ An instructional unit of time in which a student has contact with an instructor; includes lecture and/or laboratory time.

⁴ Distance Learning includes non-traditional courses offered through Directed Studies, Hybrid courses, Instructional Television, Online, and Print-Based courses.

⁵ Locations, other than campuses, that are staffed, have regular posted hours, and offer credit courses on a regular basis (every semester).

⁶ Various credit and non-credit classes and training offered for businesses, government entities, high schools, correctional institutions, and community groups.

Source: Spring 12th Class Day Data

**Course Enrollment¹
Academic Areas
Spring 2008 - 2012**

Arts & Humanities	Spring 2008	Spring 2009	Spring 2010	Spring 2011	Spring 2012	08-12 % chg
Arabic	19	33	30	37	30	57.89%
Art	1,715	1,974	2,142	2,458	2,369	38.13%
Chinese	21	25	30	20	26	23.81%
Creative Writing	164	228	236	249	247	50.61%
Dance	143	132	205	206	228	59.44%
Drama	289	441	492	623	568	96.54%
English for Speakers of Other Languages	648	748	909	1,078	1,143	76.39%
French	265	323	379	359	355	33.96%
German	109	118	136	137	123	12.84%
Humanities	268	313	479	675	669	149.63%
Japanese	175	204	210	184	198	13.14%
Latin	33	16	30	33	58	75.76%
Philosophy	2,038	2,275	2,375	2,687	2,495	22.42%
Religion	75	105	148	111	140	86.67%
Russian	26	27	32	19	23	-11.54%
Spanish	2,252	2,409	2,559	2,774	2,437	8.21%
TOTAL	8,240	9,371	10,392	11,650	11,109	34.82%
Communications	Spring 2008	Spring 2009	Spring 2010	Spring 2011	Spring 2012	08-12 % chg
English	8,507	9,145	10,232	10,876	10,391	22.15%
Journalism	212	276	297	296	277	30.66%
Reading - Developmental	700	940	1,148	1,324	1,303	86.14%
Speech	2,558	2,865	3,281	3,508	3,462	35.34%
Study Skills	37	55	69	81	109	194.59%
Writing - Developmental	545	742	852	1,178	1,187	117.80%
TOTAL	12,559	14,023	15,879	17,263	16,729	33.20%

¹ Students who enroll in multiple courses are counted once for each course.

NOTE: Disciplines are listed under the current (2011-12) dean area; they may have been listed under another dean area in previous years. A "." means that the program did not offer courses that semester.

Source: Spring 12th Class Day Data

**Course Enrollment¹
Academic Areas
Spring 2008 - 2012**

Math & Sciences	Spring 2008	Spring 2009	Spring 2010	Spring 2011	Spring 2012	08-12 % chg
Astronomy	266	328	387	458	406	52.63%
Biology	4,216	4,783	5,658	6,767	6,366	51.00%
Biotechnology	94	101	62	75	77	-18.09%
Chemistry	1,572	3,133	3,743	4,297	4,218	168.32%
Engineering	62	74	112	130	157	153.23%
Environmental Science & Technology	303	295	318	318	247	-18.48%
Geology	590	614	739	711	624	5.76%
Mathematics	5,635	5,970	6,565	7,305	7,060	25.29%
Mathematics - Developmental	5,877	6,876	8,043	8,737	8,577	45.94%
Physics	794	969	1,077	1,209	1,045	31.61%
TOTAL	19,409	23,143	26,704	30,007	28,777	48.27%
Social & Behavioral Sciences	Spring 2008	Spring 2009	Spring 2010	Spring 2011	Spring 2012	08-12 % chg
Anthropology	575	764	974	1,051	768	33.57%
Economics	2,063	2,460	2,755	2,563	2,197	6.50%
Educational Instruction	159	195	262	242	209	31.45%
Geography	558	657	863	842	671	20.25%
Geographic Information Systems ²	.	.	.	47	60	.
Government	4,983	6,154	6,853	6,987	6,582	32.09%
History	6,338	7,063	7,819	8,166	7,717	21.76%
Human Development	867	884	1,171	1,268	1,466	69.09%
Military Science	9	9	30	27	17	88.89%
Psychology	3,502	4,215	4,524	5,053	5,080	45.06%
Sociology	1,404	1,771	2,275	2,538	2,110	50.28%
TOTAL	20,458	24,172	27,526	28,784	26,877	31.38%
SUBTOTAL FOR ACADEMIC	60,666	70,709	80,501	87,704	83,492	37.63%

¹ Students who enroll in multiple courses are counted once for each course.

² Geographic Information Systems began in Fall 2009.

NOTE: Disciplines are listed under the current (2011-12) dean area; they may have been listed under another dean area in previous years. A "." means that the program did not offer courses that semester.

Source: Spring 12th Class Day Data

**Course Enrollment¹
Workforce Areas
Spring 2008 - 2012**

Applied Technologies, Multimedia, & Public Services	Spring 2008	Spring 2009	Spring 2010	Spring 2011	Spring 2012	08-12 % chg
American Sign Language Interpreter Training ²	.	.	.	546	579	.
Auto Body Collision & Refinishing ³	.	.	89	117	129	.
Automotive Technology & Outdoor Powered Equipment	470	527	570	716	650	38.30%
Building Construction Technology	396	420	418	484	461	16.41%
Child Care & Development	495	497	470	432	422	-14.75%
Commercial Music Management	483	512	543	579	533	10.35%
Criminal Justice	777	839	982	1,166	1,201	54.57%
Fire Protection Technology	273	299	316	335	345	26.37%
Heating, AC, & Refrigeration Technology	203	241	272	323	313	54.19%
Human Services	706	751	826	495	484	-31.44%
Jewelry	137	143	121	135	153	11.68%
Music	770	813	834	927	883	14.68%
Paralegal	256	317	332	368	388	51.56%
Photographic Technology	478	497	577	621	566	18.41%
Radio-TV-Film	299	377	442	487	518	73.24%
Welding Technology	311	348	345	419	423	36.01%
TOTAL	6,054	6,581	7,137	8,150	8,048	32.94%

Business Studies	Spring 2008	Spring 2009	Spring 2010	Spring 2011	Spring 2012	08-12 % chg
Accounting	1,405	1,498	1,727	1,938	1,823	29.75%
Business & Technical Communications	169	192	291	332	395	133.73%
Culinary Arts	225	220	295	349	392	74.22%
Financial Management	184	137	187	187	133	-27.72%
Hospitality Management	176	195	230	280	260	47.73%
International Business	81	83	115	118	66	-18.52%
Management	1,240	1,366	1,669	1,536	1,521	22.66%
Marketing	473	459	552	597	487	2.96%
Meeting & Events Planning	31	27	47	37	47	51.61%
Office Administration	343	397	523	561	494	44.02%
Real Estate	383	287	290	312	258	-32.64%
Travel & Tourism	34	14	23	26	32	-5.88%
TOTAL	4,744	4,875	5,949	6,273	5,908	24.54%

¹ Students who enroll in multiple courses are counted once for each course.

² American Sign Language Interpreter Training began in Fall 2010.

³ Auto Body Collision & Refinishing began in Fall 2008.

NOTE: Disciplines are listed under the current (2011-12) dean area; they may have been listed under another dean area in previous years. A "." means that the program did not offer courses that semester.

Source: Spring 12th Class Day Data

**Course Enrollment¹
Workforce Areas
Spring 2008 - 2012**

Computer Studies & Advanced Technology	Spring 2008	Spring 2009	Spring 2010	Spring 2011	Spring 2012	08-12 % chg
Architectural & Engineering CAD	538	547	559	538	560	4.09%
Computer Information Technology	1,095	1,311	1,549	1,720	1,678	53.24%
Computer Science	1,312	1,508	1,761	1,826	1,862	41.92%
Electronics & Advanced Technology	264	310	368	429	370	40.15%
Land Surveying Technology/Geomatics	60	40	29	47	42	-30.00%
Visual Communication	1,107	1,292	1,482	1,559	1,510	36.40%
TOTAL	4,376	5,008	5,748	6,119	6,022	37.61%
Health Sciences	Spring 2008	Spring 2009	Spring 2010	Spring 2011	Spring 2012	08-12 % chg
Allied Health Sciences	975	1,042	1,165	1,300	1,273	30.56%
Dental Hygiene	96	104	99	96	99	3.13%
Diagnostic Medical Imaging Radiology	166	193	195	227	249	50.00%
Emergency Medical Services Professions	267	353	361	359	412	54.31%
Health & Kinesiology	2,248	2,374	2,773	2,961	2,731	21.49%
Health Information Technology	79	89	165	165	159	101.27%
Medical Lab Technology	59	101	103	132	133	125.42%
Nursing - Professional	1,645	2,081	2,154	2,241	1,979	20.30%
Nursing - Vocational	430	384	434	503	453	5.35%
Occupational Therapy Assistant	73	125	145	146	154	110.96%
Personal Fitness Trainer	31	21	27	41	49	58.06%
Pharmacy Technology	115	163	199	191	190	65.22%
Physical Therapist Assistant	100	84	101	114	132	32.00%
Sonography	71	90	102	90	103	45.07%
Surgical Technology	88	94	94	98	102	15.91%
TOTAL	6,443	7,298	8,117	8,664	8,218	27.55%
SUBTOTAL FOR WORKFORCE	21,617	23,762	26,951	29,206	28,196	30.43%
GRAND TOTAL (Academic & Workforce)	82,283	94,471	107,452	116,910	111,688	35.74%

¹ Students who enroll in multiple courses are counted once for each course.

NOTE: Disciplines are listed under the current (2011-12) dean area; they may have been listed under another dean area in previous years. A "." means that the program did not offer courses that semester.

Source: Spring 12th Class Day Data

Semester Credit Hours¹
Academic Areas
Spring 2008 - 2012

Arts & Humanities	Spring 2008	Spring 2009	Spring 2010	Spring 2011	Spring 2012	08-12 % chg
Arabic	95	145	128	155	134	41.05%
Art	5,145	5,922	6,426	7,374	7,107	38.13%
Chinese	87	109	128	100	110	26.44%
Creative Writing	492	684	708	747	741	50.61%
Dance	240	211	349	361	432	80.00%
Drama	857	1,309	1,462	1,853	1,686	96.73%
English for Speakers of Other Languages	1,944	2,244	2,727	3,234	3,429	76.39%
French	1,277	1,535	1,771	1,703	1,657	29.76%
German	531	590	656	655	599	12.81%
Humanities	804	939	1,437	2,025	2,007	149.63%
Japanese	817	948	984	858	904	10.65%
Latin	149	80	132	147	278	86.58%
Philosophy	6,114	6,825	7,125	8,061	7,485	22.42%
Religion	225	315	444	333	420	86.67%
Russian	120	125	146	83	103	-14.17%
Spanish	10,546	11,303	11,939	13,036	11,483	8.88%
TOTAL	29,443	33,284	36,562	40,725	38,575	31.02%
Communications	Spring 2008	Spring 2009	Spring 2010	Spring 2011	Spring 2012	08-12 % chg
English	25,521	27,435	30,696	32,628	31,173	22.15%
Journalism	636	828	888	888	831	30.66%
Reading - Developmental	2,100	2,820	3,972	3,972	3,909	86.14%
Speech	7,674	8,595	9,843	10,524	10,386	35.34%
Study Skills	106	144	186	220	307	189.62%
Writing - Developmental	1,579	2,174	2,488	3,300	3,273	107.28%
TOTAL	37,616	41,996	47,543	51,532	49,879	32.60%

¹ Students who enroll in multiple courses are counted once for each course.

NOTE: Disciplines are listed under the current (2011-12) dean area; they may have been listed under another dean area in previous years. A "." means that the program did not offer courses that semester.

Source: Spring 12th Class Day Data

**Semester Credit Hours¹
Academic Areas
Spring 2008 - 2012**

Math & Sciences	Spring 2008	Spring 2009	Spring 2010	Spring 2011	Spring 2012	08-12 % chg
Astronomy	823	1,006	1,231	1,461	1,296	57.47%
Biology	13,321	14,828	17,198	20,449	19,379	45.48%
Biotechnology	293	320	202	243	237	-19.11%
Chemistry	6,288	6,277	7,527	8,613	8,458	34.51%
Engineering	155	181	271	317	367	136.77%
Environmental Science & Technology	899	867	923	930	719	-20.02%
Geology	2,046	2,142	2,564	2,496	2,212	8.11%
Mathematics	18,415	19,517	21,474	23,802	22,972	24.75%
Mathematics - Developmental	17,581	20,130	23,460	25,373	24,872	41.47%
Physics	3,160	3,858	4,271	4,796	4,180	32.28%
TOTAL	62,981	69,126	79,121	88,480	84,692	34.47%
Social & Behavioral Sciences	Spring 2008	Spring 2009	Spring 2010	Spring 2011	Spring 2012	08-12 % chg
Anthropology	1,725	2,292	2,922	3,153	2,304	33.57%
Economics	6,189	7,380	8,265	7,689	6,591	6.50%
Educational Instruction	477	585	786	726	627	31.45%
Geography	1,727	2,065	2,665	2,604	2,100	21.60%
Geographic Information Systems ²	.	.	.	179	209	.
Government	14,949	18,462	20,559	20,961	19,746	32.09%
History	19,014	21,189	23,457	24,498	23,151	21.76%
Human Development	1,409	1,530	2,133	2,190	2,382	69.06%
Military Science	18	18	60	54	34	88.89%
Psychology	10,506	12,645	13,572	15,159	15,240	45.06%
Sociology	4,212	5,313	6,825	7,614	6,330	50.28%
TOTAL	60,226	71,479	81,244	84,827	78,714	30.70%
SUBTOTAL FOR ACADEMIC	190,266	215,885	244,470	265,564	251,860	32.37%

¹ Students who enroll in multiple courses are counted once for each course.

² Geographic Information Systems began in Fall 2009.

NOTE: Disciplines are listed under the current (2011-12) dean area; they may have been listed under another dean area in previous years. A "." means that the program did not offer courses that semester.

Source: Spring 12th Class Day Data

**Semester Credit Hours¹
Workforce Areas
Spring 2008 - 2012**

Applied Technologies, Multimedia, & Public Services	Spring 2008	Spring 2009	Spring 2010	Spring 2011	Spring 2012	08-12 % chg
American Sign Language Interpreter Training ²	.	.	.	2,007	2,112	.
Auto Body Collision & Refinishing ³	.	.	299	411	439	.
Automotive Technology & Outdoor Powered Equipment	1,865	2,042	2,280	2,864	2,600	39.41%
Building Construction Technology	1,439	1,549	1,578	1,723	1,656	15.08%
Child Care & Development	1,550	1,577	1,533	1,371	1,306	-15.74%
Commercial Music Management	1,428	1,510	1,584	1,717	1,597	11.83%
Criminal Justice	2,366	2,557	2,997	3,575	3,668	55.03%
Fire Protection Technology	966	1,032	1,103	1,160	1,200	24.22%
Heating, AC, & Refrigeration Technology	802	944	1,054	1,248	1,202	49.88%
Human Services	2,453	2,542	2,801	1,518	1,486	-39.42%
Jewelry	548	572	484	540	612	11.68%
Music	1,655	1,798	1,849	1,934	2,047	23.69%
Paralegal	768	951	996	1,104	1,164	51.56%
Photographic Technology	1,497	1,549	1,793	1,920	1,737	16.03%
Radio-TV-Film	897	1,131	1,326	1,461	1,554	73.24%
Welding Technology	1,244	1,392	1,380	1,676	1,692	36.01%
TOTAL	19,478	21,146	23,057	26,229	26,072	33.85%
Business Studies	Spring 2008	Spring 2009	Spring 2010	Spring 2011	Spring 2012	08-12 % chg
Accounting	4,202	4,587	5,283	5,901	5,546	31.98%
Business & Technical Communications	515	604	898	1,013	1,213	135.53%
Culinary Arts	610	593	778	941	1,072	75.74%
Financial Management	552	411	561	561	399	-27.72%
Hospitality Management	528	585	690	840	780	47.73%
International Business	243	243	345	354	198	-18.52%
Management	3,686	4,080	5,007	4,588	4,563	23.79%
Marketing	1,419	1,377	1,656	1,791	1,461	2.96%
Meeting & Events Planning	93	81	141	111	141	51.61%
Office Administration	905	998	1,335	1,465	1,273	40.66%
Real Estate	1,184	896	957	1,025	834	-29.56%
Travel & Tourism	102	42	69	78	96	-5.88%
TOTAL	14,039	14,497	17,720	18,668	17,576	25.19%

¹ Students who enroll in multiple courses are counted once for each course.

² American Sign Language Interpreter Training began in Fall 2010.

³ Auto Body Collision & Refinishing began in Fall 2008.

NOTE: Disciplines are listed under the current (2011-12) dean area; they may have been listed under another dean area in previous years. A "." means that the program did not offer courses that semester.

Source: Spring 12th Class Day Data

**Semester Credit Hours¹
Workforce Areas
Spring 2008 - 2012**

Computer Studies & Advanced Technology	Spring 2008	Spring 2009	Spring 2010	Spring 2011	Spring 2012	08-12 % chg
Architectural & Engineering CAD	2,152	2,188	2,236	2,152	2,240	4.09%
Computer Information Technology	3,469	4,143	4,930	5,441	5,309	53.04%
Computer Science	3,999	4,580	5,360	5,563	5,671	41.81%
Electronics & Advanced Technology	975	1,149	1,336	1,552	1,388	42.36%
Land Surveying Technology/Geomatics	185	126	89	141	127	-31.35%
Visual Communication	4,166	4,845	5,596	5,780	5,635	35.26%
TOTAL	14,946	17,031	19,547	20,629	20,370	36.29%
<hr/>						
Health Sciences	Spring 2008	Spring 2009	Spring 2010	Spring 2011	Spring 2012	08-12 % chg
Allied Health Sciences	2,346	2,532	2,792	3,211	3,119	32.95%
Dental Hygiene	209	225	214	210	214	2.39%
Diagnostic Medical Imaging Radiology	471	542	555	639	705	49.68%
Emergency Medical Services Professions	649	890	961	967	1,050	61.79%
Health & Kinesiology	2,886	3,093	3,655	3,810	3,569	23.67%
Health Information Technology	233	264	468	463	453	94.42%
Medical Lab Technology	191	281	274	400	366	91.62%
Nursing - Professional	4,313	5,072	5,061	5,202	4,893	13.45%
Nursing - Vocational	1,328	1,171	1,376	1,552	1,363	2.64%
Occupational Therapy Assistant	180	307	344	352	365	102.78%
Personal Fitness Trainer	101	70	91	146	168	66.34%
Pharmacy Technology	360	471	577	536	541	50.28%
Physical Therapist Assistant	319	268	340	382	440	37.93%
Sonography	259	327	371	290	320	23.55%
Surgical Technology	320	342	342	370	390	21.88%
TOTAL	14,165	15,855	17,421	18,530	17,956	26.76%
 SUBTOTAL FOR WORKFORCE	 62,628	 68,529	 77,745	 84,056	 81,974	 30.89%
 GRAND TOTAL (Academic & Workforce)	 252,894	 284,414	 322,215	 349,620	 333,834	 32.01%

¹ Students who enroll in multiple courses are counted once for each course.

NOTE: Disciplines are listed under the current (2011-12) dean area; they may have been listed under another dean area in previous years.

Source: Spring 12th Class Day Data

**Contact Hours¹
Academic Areas
Spring 2008 - 2012**

Arts & Humanities	Spring 2008	Spring 2009	Spring 2010	Spring 2011	Spring 2012	08-12 % chg
Arabic	1,520	2,320	2,048	2,480	2,144	41.05%
Art	120,000	132,768	141,536	158,736	152,016	26.68%
Chinese	1,392	1,744	2,048	1,600	1,760	26.44%
Creative Writing	7,872	10,944	11,328	11,952	11,856	50.61%
Dance	9,328	8,224	13,040	13,184	13,952	49.57%
Drama	17,328	26,032	29,376	35,680	31,648	82.64%
English for Speakers of Other	41,472	47,872	58,368	69,168	73,312	76.77%
French	20,432	24,560	28,336	27,248	26,512	29.76%
German	8,496	9,440	10,496	10,480	9,584	12.81%
Humanities	12,864	15,024	22,992	32,400	32,112	149.63%
Japanese	13,072	15,168	15,744	13,728	14,464	10.65%
Latin	2,384	1,280	2,112	2,352	4,448	86.58%
Philosophy	97,824	109,200	114,000	128,976	119,760	22.42%
Religion	3,600	5,040	7,104	5,328	6,720	86.67%
Russian	1,920	2,000	2,336	1,328	1,648	-14.17%
Spanish	168,976	181,040	191,424	208,928	183,728	8.73%
TOTAL	528,480	592,656	652,288	723,568	685,664	29.74%
Communications	Spring 2008	Spring 2009	Spring 2010	Spring 2011	Spring 2012	08-12 % chg
English	408,336	438,960	491,136	522,048	498,768	22.15%
Journalism	10,176	13,616	14,688	14,544	13,872	36.32%
Reading - Developmental	37,872	50,480	63,120	73,264	71,984	90.07%
Speech	122,784	137,520	157,488	168,384	166,176	35.34%
Study Skills	1,696	2,304	2,976	3,520	4,912	189.62%
Writing - Developmental	29,680	41,404	47,392	61,920	60,752	104.69%
TOTAL	610,544	684,284	776,800	843,680	816,464	33.73%

¹ Students who enroll in multiple courses are counted once for each course.

NOTE: Disciplines are listed under the current (2011-12) dean area; they may have been listed under another dean area in previous years. A "." means that the program did not offer courses that semester.

Source: Spring 12th Class Day Data

**Contact Hours¹
Academic Areas
Spring 2008 - 2012**

Math & Sciences	Spring 2008	Spring 2009	Spring 2010	Spring 2011	Spring 2012	08-12 % chg
Astronomy	13,968	16,800	21,936	26,160	23,232	66.32%
Biology	302,432	326,976	380,528	457,440	431,200	42.58%
Biotechnology	9,440	9,264	4,800	7,008	6,400	-32.20%
Chemistry	150,912	150,384	179,664	206,256	202,464	34.16%
Engineering	2,480	2,896	4,336	5,072	5,872	136.77%
Environmental Science & Technology	15,120	14,336	15,792	15,680	12,672	-16.19%
Geology	41,568	43,872	52,128	51,552	46,272	11.32%
Mathematics	294,896	312,624	343,840	381,056	368,144	24.84%
Mathematics - Developmental	374,656	431,344	501,328	540,784	528,688	41.11%
Physics	75,456	92,160	101,616	114,144	100,320	32.95%
TOTAL	1,280,928	1,400,656	1,605,968	1,805,152	1,725,264	34.69%
Social & Behavioral Sciences	Spring 2008	Spring 2009	Spring 2010	Spring 2011	Spring 2012	08-12 % chg
Anthropology	28,080	36,912	47,328	50,832	37,488	33.50%
Economics	99,024	118,080	132,240	123,024	105,456	6.50%
Educational Instruction	7,632	9,360	12,576	11,616	10,032	31.45%
Geography	29,328	36,048	45,552	44,160	36,384	24.06%
Geographic Information Systems ²	.	.	.	4,560	5,232	.
Government	240,080	296,416	329,776	336,144	316,832	31.97%
History	304,224	339,024	375,312	391,968	370,416	21.76%
Human Development	27,312	28,968	39,648	41,496	46,176	69.07%
Military Science	432	432	1,440	1,296	816	88.89%
Psychology	168,240	202,608	217,152	242,544	243,840	44.94%
Sociology	67,392	85,056	109,200	121,824	101,280	50.28%
TOTAL	971,744	1,152,904	1,310,224	1,369,464	1,273,952	31.10%
SUBTOTAL FOR ACADEMIC	3,391,696	3,830,500	4,345,280	4,741,864	4,501,344	32.72%

¹ Students who enroll in multiple courses are counted once for each course.

² Geographic Information Systems began in Fall 2009.

NOTE: Disciplines are listed under the current (2011-12) dean area; they may have been listed under another dean area in previous years. A "." means that the program did not offer courses that semester.

Source: Spring 12th Class Day Data

**Contact Hours¹
Workforce Areas
Spring 2008 - 2012**

Applied Technologies, Multimedia, & Public Services	Spring 2008	Spring 2009	Spring 2010	Spring 2011	Spring 2012	08-12 % chg
American Sign Language Interpreter Training ²	.	.	.	49,120	52,400	.
Auto Body Collision & Refinishing ³	.	.	8,784	10,464	12,944	.
Automotive Technology & Outdoor Powered Equipment	47,104	52,128	57,408	71,872	66,016	40.15%
Building Construction Technology	32,752	36,016	36,240	38,160	37,280	13.83%
Child Care & Development	36,752	37,968	37,760	33,872	32,144	-12.54%
Commercial Music Management	31,440	33,536	35,936	38,352	35,760	13.74%
Criminal Justice	40,096	42,128	50,768	59,504	62,080	54.83%
Fire Protection Technology	21,088	21,696	23,600	24,544	25,536	21.09%
Heating, AC, & Refrigeration Technology	19,648	23,456	26,656	31,712	30,848	57.00%
Human Services	52,848	57,360	61,792	27,216	27,376	-48.20%
Jewelry	13,152	13,728	11,616	12,960	14,688	11.68%
Music	34,104	37,008	38,224	42,744	39,536	15.93%
Paralegal	14,448	18,336	19,776	20,544	21,984	52.16%
Photographic Technology	58,720	61,248	71,024	76,848	70,000	19.21%
Radio-TV-Film	18,816	24,416	28,128	30,448	33,312	77.04%
Welding Technology	29,856	33,536	33,120	40,352	40,736	36.44%
TOTAL	450,824	492,560	540,832	608,712	602,640	33.68%
Business Studies	Spring 2008	Spring 2009	Spring 2010	Spring 2011	Spring 2012	08-12 % chg
Accounting	89,264	97,104	109,312	122,416	114,256	28.00%
Business & Technical Communications	8,240	9,664	14,656	16,496	19,408	135.53%
Culinary Arts	13,968	13,600	18,400	22,672	26,656	90.84%
Financial Management	8,832	6,576	8,976	8,976	6,384	-27.72%
Hospitality Management	10,528	10,368	13,584	16,272	17,344	64.74%
International Business	3,888	3,888	5,520	5,664	3,168	-18.52%
Management	59,696	65,520	81,072	73,408	73,248	22.70%
Marketing	22,704	22,032	26,496	28,656	23,376	2.96%
Meeting & Events Planning	1,488	1,296	2,256	1,776	2,256	51.61%
Office Administration	21,024	23,632	31,456	33,744	29,872	42.09%
Real Estate	18,944	14,336	15,312	16,400	13,344	-29.56%
Travel & Tourism	1,744	672	1,232	1,568	1,888	8.26%
TOTAL	260,320	268,688	328,272	348,048	331,200	27.23%

¹ Students who enroll in multiple courses are counted once for each course.

² American Sign Language Interpreter Training began in Fall 2010.

³ Auto Body Collision & Refinishing began in Fall 2008.

NOTE: Disciplines are listed under the current (2011-12) dean area; they may have been listed under another dean area in previous years. A "." means that the program did not offer courses that semester.

Source: Spring 12th Class Day Data

ENROLLMENT BY AREA

Contact Hours¹ Workforce Areas Spring 2008 - 2012

Computer Studies & Advanced Technology	Spring 2008	Spring 2009	Spring 2010	Spring 2011	Spring 2012	08-12 % chg
Architectural & Engineering CAD	51,648	52,512	53,664	51,648	53,760	4.09%
Computer Information Technology	80,176	94,880	112,256	124,224	121,536	51.59%
Computer Science	85,984	98,304	115,168	119,584	121,888	41.76%
Electronics & Advanced Technology	24,000	29,024	32,272	37,600	33,520	39.67%
Land Surveying Technology/Geomatics	4,448	3,648	1,808	2,640	2,800	-37.05%
Visual Communication	102,880	119,792	137,536	143,856	140,512	36.58%
TOTAL	349,136	398,160	452,704	479,552	474,016	35.77%
<hr/>						
Health Sciences	Spring 2008	Spring 2009	Spring 2010	Spring 2011	Spring 2012	08-12 % chg
Allied Health Sciences	37,536	40,512	44,672	51,376	49,904	32.95%
Dental Hygiene	10,000	10,832	10,560	10,240	10,560	5.60%
Diagnostic Medical Imaging Radiology	23,296	25,184	28,032	29,888	35,040	50.41%
Emergency Medical Services Professions	23,104	31,606	32,792	31,640	37,258	61.26%
Health & Kinesiology	107,904	113,952	133,104	142,128	131,088	21.49%
Health Information Technology	5,264	5,648	8,528	8,896	8,672	64.74%
Medical Lab Technology	6,944	10,448	9,936	15,632	16,512	137.79%
Nursing - Professional	151,312	179,232	176,624	181,728	170,544	12.71%
Nursing - Vocational	39,776	35,488	42,304	45,856	42,608	7.12%
Occupational Therapy Assistant	6,672	11,600	14,720	14,208	15,392	130.70%
Personal Fitness Trainer	2,000	1,440	1,872	3,200	3,648	82.40%
Pharmacy Technology	10,016	12,208	16,848	14,848	14,832	48.08%
Physical Therapist Assistant	12,336	10,464	12,784	14,400	16,512	33.85%
Sonography	12,544	16,320	18,368	16,800	18,320	46.05%
Surgical Technology	11,120	11,888	11,888	13,120	13,920	25.18%
TOTAL	459,824	516,822	563,032	593,960	584,810	27.18%
 SUBTOTAL FOR WORKFORCE	 1,520,104	 1,676,230	 1,884,840	 2,030,272	 1,992,666	 31.09%
 GRAND TOTAL (Academic & Workforce)	 4,911,800	 5,506,730	 6,230,120	 6,772,136	 6,494,010	 32.21%

¹ Students who enroll in multiple courses are counted once for each course.

NOTE: Disciplines are listed under the current (2011-12) dean area; they may have been listed under another dean area in previous years.

Source: Spring 12th Class Day Data

**Distance Learning¹ Course Enrollment and Contact Hours
Spring 2008 - 2012**

	Spring 2008	Spring 2009	Spring 2010	Spring 2011	Spring 2012	08-12 % chg
COURSE ENROLLMENT²						
Directed Study (DIR)	328	260	254	236	212	-35.37%
Hybrid (HYD) ³	.	269	670	758	997	.
Instructional Television (ITV)	899	793	755	728	386	-57.06%
Online (ONL)	9,457	10,261	11,704	12,324	13,026	37.74%
Print-Based (PRN)	366	367	415	379	404	10.38%
Unknown ⁴	.	1
TOTAL	11,050	11,951	13,798	14,425	15,025	35.97%

	Spring 2008	Spring 2009	Spring 2010	Spring 2011	Spring 2012	08-12 % chg
CONTACT HOURS⁵						
Directed Study (DIR)	36,608	24,816	22,720	20,432	21,728	-40.65%
Hybrid (HYD) ³	.	12,912	36,304	41,056	53,872	.
Instructional Television (ITV)	43,392	37,728	35,776	34,448	18,336	-57.74%
Online (ONL)	496,400	536,480	607,024	637,384	673,520	35.68%
Print-Based (PRN)	17,600	17,760	19,020	18,192	19,392	10.18%
Unknown ⁴	.	64
TOTAL	594,000	629,760	721,744	751,512	786,848	32.47%

¹ Distance Learning includes non-traditional courses offered through Directed Study, Hybrid courses, Instructional Television, Online, and Print-Based courses. Prior to Fall 2006, Distance Learning also included courses offered in Interactive Video Class format.

² Students who enroll in multiple courses are counted once for each course.

³ Distance Learning Hybrids (HYD) offer students the majority (51% or more) of their course work online via the Internet, with some classroom and/or laboratory meeting times.

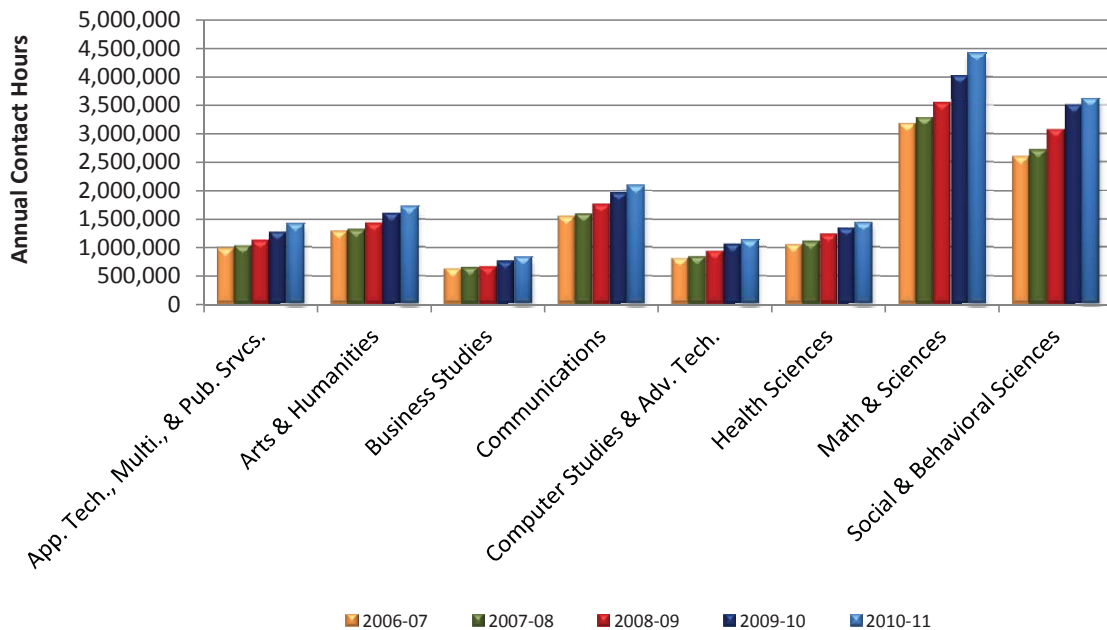
⁴ Delivery method not listed.

⁵ An instructional unit of time in which a student has contact with an instructor; includes lecture and/or laboratory time.

Source: Spring 12th Class Day Data

Annual Contact Hours by Dean Area
Academic Years 2007 - 2011

Dean Area	2006-07	2007-08	2008-09	2009-10	2010-11	07-11 % chg
Applied Technologies, Multimedia, & Public Services	976,054	1,022,520	1,110,776	1,257,288	1,398,760	43.31%
Arts & Humanities	1,281,168	1,300,656	1,414,688	1,588,304	1,706,448	33.19%
Business Studies	616,254	638,560	652,720	753,856	817,008	32.58%
Communications	1,534,688	1,580,384	1,745,440	1,950,240	2,074,848	35.20%
Computer Studies & Advanced Technology	803,472	828,912	927,856	1,052,592	1,106,240	37.68%
Health Sciences	1,042,284	1,092,880	1,219,912	1,330,450	1,420,024	36.24%
Math & Sciences	3,173,760	3,267,744	3,541,600	4,013,872	4,414,992	39.11%
Social & Behavioral Sciences	2,586,440	2,700,368	3,066,040	3,491,152	3,602,936	39.30%
TOTAL	12,014,120	12,432,024	13,679,032	15,437,754	16,541,256	37.68%



NOTE: Disciplines are listed under the current (2010-11) dean area; they may have been included in another dean area in previous years.

Source: Fall 12th Class Day Data

THIS PAGE INTENTIONALLY LEFT BLANK