

**Student Headcount, Course Enrollment, Contact Hours, and Semester
Credit Hours by Location
Spring 2012**

Location	Headcount¹	Course Enrollment²	Contact Hours³	Semester Credit Hours
Cypress Creek Campus	5,275	9,893	546,640	29,010
Eastview Campus	4,013	7,441	526,914	21,050
Northridge Campus	9,921	19,225	1,149,264	57,552
Pinnacle Campus	3,333	6,139	337,584	18,309
Rio Grande Campus	8,672	16,603	965,760	50,816
Riverside Campus	7,263	13,737	815,416	41,294
Round Rock Campus	5,121	10,043	601,760	30,121
South Austin	3,588	5,829	324,696	17,589
Distance Learning ⁴	9,744	15,025	786,848	45,154
Centers ⁵	2,239	3,584	187,488	10,859
Site-Based Instruction ⁶	3,001	4,169	251,640	12,080

¹ Students who attend multiple locations are counted once at each location.

² Students who enroll in multiple courses are counted once for each course.

³ An instructional unit of time in which a student has contact with an instructor; includes lecture and/or laboratory time.

⁴ Distance Learning includes non-traditional courses offered through Directed Studies, Hybrid courses, Instructional Television, Online, and Print-Based courses.

⁵ Locations, other than campuses, that are staffed, have regular posted hours, and offer credit courses on a regular basis (every semester).

⁶ Various credit and non-credit classes and training offered for businesses, government entities, high schools, correctional institutions, and community groups.

Source: Spring 12th Class Day Data

**Course Enrollment¹
Academic Areas
Spring 2008 - 2012**

Arts & Humanities	Spring 2008	Spring 2009	Spring 2010	Spring 2011	Spring 2012	08-12 % chg
Arabic	19	33	30	37	30	57.89%
Art	1,715	1,974	2,142	2,458	2,369	38.13%
Chinese	21	25	30	20	26	23.81%
Creative Writing	164	228	236	249	247	50.61%
Dance	143	132	205	206	228	59.44%
Drama	289	441	492	623	568	96.54%
English for Speakers of Other Languages	648	748	909	1,078	1,143	76.39%
French	265	323	379	359	355	33.96%
German	109	118	136	137	123	12.84%
Humanities	268	313	479	675	669	149.63%
Japanese	175	204	210	184	198	13.14%
Latin	33	16	30	33	58	75.76%
Philosophy	2,038	2,275	2,375	2,687	2,495	22.42%
Religion	75	105	148	111	140	86.67%
Russian	26	27	32	19	23	-11.54%
Spanish	2,252	2,409	2,559	2,774	2,437	8.21%
TOTAL	8,240	9,371	10,392	11,650	11,109	34.82%
Communications	Spring 2008	Spring 2009	Spring 2010	Spring 2011	Spring 2012	08-12 % chg
English	8,507	9,145	10,232	10,876	10,391	22.15%
Journalism	212	276	297	296	277	30.66%
Reading - Developmental	700	940	1,148	1,324	1,303	86.14%
Speech	2,558	2,865	3,281	3,508	3,462	35.34%
Study Skills	37	55	69	81	109	194.59%
Writing - Developmental	545	742	852	1,178	1,187	117.80%
TOTAL	12,559	14,023	15,879	17,263	16,729	33.20%

¹ Students who enroll in multiple courses are counted once for each course.

NOTE: Disciplines are listed under the current (2011-12) dean area; they may have been listed under another dean area in previous years. A "." means that the program did not offer courses that semester.

Source: Spring 12th Class Day Data

**Course Enrollment¹
Academic Areas
Spring 2008 - 2012**

Math & Sciences	Spring 2008	Spring 2009	Spring 2010	Spring 2011	Spring 2012	08-12 % chg
Astronomy	266	328	387	458	406	52.63%
Biology	4,216	4,783	5,658	6,767	6,366	51.00%
Biotechnology	94	101	62	75	77	-18.09%
Chemistry	1,572	3,133	3,743	4,297	4,218	168.32%
Engineering	62	74	112	130	157	153.23%
Environmental Science & Technology	303	295	318	318	247	-18.48%
Geology	590	614	739	711	624	5.76%
Mathematics	5,635	5,970	6,565	7,305	7,060	25.29%
Mathematics - Developmental	5,877	6,876	8,043	8,737	8,577	45.94%
Physics	794	969	1,077	1,209	1,045	31.61%
TOTAL	19,409	23,143	26,704	30,007	28,777	48.27%
Social & Behavioral Sciences	Spring 2008	Spring 2009	Spring 2010	Spring 2011	Spring 2012	08-12 % chg
Anthropology	575	764	974	1,051	768	33.57%
Economics	2,063	2,460	2,755	2,563	2,197	6.50%
Educational Instruction	159	195	262	242	209	31.45%
Geography	558	657	863	842	671	20.25%
Geographic Information Systems ²	.	.	.	47	60	.
Government	4,983	6,154	6,853	6,987	6,582	32.09%
History	6,338	7,063	7,819	8,166	7,717	21.76%
Human Development	867	884	1,171	1,268	1,466	69.09%
Military Science	9	9	30	27	17	88.89%
Psychology	3,502	4,215	4,524	5,053	5,080	45.06%
Sociology	1,404	1,771	2,275	2,538	2,110	50.28%
TOTAL	20,458	24,172	27,526	28,784	26,877	31.38%
SUBTOTAL FOR ACADEMIC	60,666	70,709	80,501	87,704	83,492	37.63%

¹ Students who enroll in multiple courses are counted once for each course.

² Geographic Information Systems began in Fall 2009.

NOTE: Disciplines are listed under the current (2011-12) dean area; they may have been listed under another dean area in previous years. A "." means that the program did not offer courses that semester.

Source: Spring 12th Class Day Data

**Course Enrollment¹
Workforce Areas
Spring 2008 - 2012**

Applied Technologies, Multimedia, & Public Services	Spring 2008	Spring 2009	Spring 2010	Spring 2011	Spring 2012	08-12 % chg
American Sign Language Interpreter Training ²	.	.	.	546	579	.
Auto Body Collision & Refinishing ³	.	.	89	117	129	.
Automotive Technology & Outdoor Powered Equipment	470	527	570	716	650	38.30%
Building Construction Technology	396	420	418	484	461	16.41%
Child Care & Development	495	497	470	432	422	-14.75%
Commercial Music Management	483	512	543	579	533	10.35%
Criminal Justice	777	839	982	1,166	1,201	54.57%
Fire Protection Technology	273	299	316	335	345	26.37%
Heating, AC, & Refrigeration Technology	203	241	272	323	313	54.19%
Human Services	706	751	826	495	484	-31.44%
Jewelry	137	143	121	135	153	11.68%
Music	770	813	834	927	883	14.68%
Paralegal	256	317	332	368	388	51.56%
Photographic Technology	478	497	577	621	566	18.41%
Radio-TV-Film	299	377	442	487	518	73.24%
Welding Technology	311	348	345	419	423	36.01%
TOTAL	6,054	6,581	7,137	8,150	8,048	32.94%

Business Studies	Spring 2008	Spring 2009	Spring 2010	Spring 2011	Spring 2012	08-12 % chg
Accounting	1,405	1,498	1,727	1,938	1,823	29.75%
Business & Technical Communications	169	192	291	332	395	133.73%
Culinary Arts	225	220	295	349	392	74.22%
Financial Management	184	137	187	187	133	-27.72%
Hospitality Management	176	195	230	280	260	47.73%
International Business	81	83	115	118	66	-18.52%
Management	1,240	1,366	1,669	1,536	1,521	22.66%
Marketing	473	459	552	597	487	2.96%
Meeting & Events Planning	31	27	47	37	47	51.61%
Office Administration	343	397	523	561	494	44.02%
Real Estate	383	287	290	312	258	-32.64%
Travel & Tourism	34	14	23	26	32	-5.88%
TOTAL	4,744	4,875	5,949	6,273	5,908	24.54%

¹ Students who enroll in multiple courses are counted once for each course.

² American Sign Language Interpreter Training began in Fall 2010.

³ Auto Body Collision & Refinishing began in Fall 2008.

NOTE: Disciplines are listed under the current (2011-12) dean area; they may have been listed under another dean area in previous years. A "." means that the program did not offer courses that semester.

Source: Spring 12th Class Day Data

**Course Enrollment¹
Workforce Areas
Spring 2008 - 2012**

Computer Studies & Advanced Technology	Spring 2008	Spring 2009	Spring 2010	Spring 2011	Spring 2012	08-12 % chg
Architectural & Engineering CAD	538	547	559	538	560	4.09%
Computer Information Technology	1,095	1,311	1,549	1,720	1,678	53.24%
Computer Science	1,312	1,508	1,761	1,826	1,862	41.92%
Electronics & Advanced Technology	264	310	368	429	370	40.15%
Land Surveying Technology/Geomatics	60	40	29	47	42	-30.00%
Visual Communication	1,107	1,292	1,482	1,559	1,510	36.40%
TOTAL	4,376	5,008	5,748	6,119	6,022	37.61%
Health Sciences	Spring 2008	Spring 2009	Spring 2010	Spring 2011	Spring 2012	08-12 % chg
Allied Health Sciences	975	1,042	1,165	1,300	1,273	30.56%
Dental Hygiene	96	104	99	96	99	3.13%
Diagnostic Medical Imaging Radiology	166	193	195	227	249	50.00%
Emergency Medical Services Professions	267	353	361	359	412	54.31%
Health & Kinesiology	2,248	2,374	2,773	2,961	2,731	21.49%
Health Information Technology	79	89	165	165	159	101.27%
Medical Lab Technology	59	101	103	132	133	125.42%
Nursing - Professional	1,645	2,081	2,154	2,241	1,979	20.30%
Nursing - Vocational	430	384	434	503	453	5.35%
Occupational Therapy Assistant	73	125	145	146	154	110.96%
Personal Fitness Trainer	31	21	27	41	49	58.06%
Pharmacy Technology	115	163	199	191	190	65.22%
Physical Therapist Assistant	100	84	101	114	132	32.00%
Sonography	71	90	102	90	103	45.07%
Surgical Technology	88	94	94	98	102	15.91%
TOTAL	6,443	7,298	8,117	8,664	8,218	27.55%
SUBTOTAL FOR WORKFORCE	21,617	23,762	26,951	29,206	28,196	30.43%
GRAND TOTAL (Academic & Workforce)	82,283	94,471	107,452	116,910	111,688	35.74%

¹ Students who enroll in multiple courses are counted once for each course.

NOTE: Disciplines are listed under the current (2011-12) dean area; they may have been listed under another dean area in previous years. A "." means that the program did not offer courses that semester.

Source: Spring 12th Class Day Data

**Semester Credit Hours¹
Academic Areas
Spring 2008 - 2012**

Arts & Humanities	Spring 2008	Spring 2009	Spring 2010	Spring 2011	Spring 2012	08-12 % chg
Arabic	95	145	128	155	134	41.05%
Art	5,145	5,922	6,426	7,374	7,107	38.13%
Chinese	87	109	128	100	110	26.44%
Creative Writing	492	684	708	747	741	50.61%
Dance	240	211	349	361	432	80.00%
Drama	857	1,309	1,462	1,853	1,686	96.73%
English for Speakers of Other Languages	1,944	2,244	2,727	3,234	3,429	76.39%
French	1,277	1,535	1,771	1,703	1,657	29.76%
German	531	590	656	655	599	12.81%
Humanities	804	939	1,437	2,025	2,007	149.63%
Japanese	817	948	984	858	904	10.65%
Latin	149	80	132	147	278	86.58%
Philosophy	6,114	6,825	7,125	8,061	7,485	22.42%
Religion	225	315	444	333	420	86.67%
Russian	120	125	146	83	103	-14.17%
Spanish	10,546	11,303	11,939	13,036	11,483	8.88%
TOTAL	29,443	33,284	36,562	40,725	38,575	31.02%
Communications	Spring 2008	Spring 2009	Spring 2010	Spring 2011	Spring 2012	08-12 % chg
English	25,521	27,435	30,696	32,628	31,173	22.15%
Journalism	636	828	888	888	831	30.66%
Reading - Developmental	2,100	2,820	3,972	3,972	3,909	86.14%
Speech	7,674	8,595	9,843	10,524	10,386	35.34%
Study Skills	106	144	186	220	307	189.62%
Writing - Developmental	1,579	2,174	2,488	3,300	3,273	107.28%
TOTAL	37,616	41,996	47,543	51,532	49,879	32.60%

¹ Students who enroll in multiple courses are counted once for each course.

NOTE: Disciplines are listed under the current (2011-12) dean area; they may have been listed under another dean area in previous years. A "." means that the program did not offer courses that semester.

Source: Spring 12th Class Day Data

**Semester Credit Hours¹
Academic Areas
Spring 2008 - 2012**

Math & Sciences	Spring 2008	Spring 2009	Spring 2010	Spring 2011	Spring 2012	08-12 % chg
Astronomy	823	1,006	1,231	1,461	1,296	57.47%
Biology	13,321	14,828	17,198	20,449	19,379	45.48%
Biotechnology	293	320	202	243	237	-19.11%
Chemistry	6,288	6,277	7,527	8,613	8,458	34.51%
Engineering	155	181	271	317	367	136.77%
Environmental Science & Technology	899	867	923	930	719	-20.02%
Geology	2,046	2,142	2,564	2,496	2,212	8.11%
Mathematics	18,415	19,517	21,474	23,802	22,972	24.75%
Mathematics - Developmental	17,581	20,130	23,460	25,373	24,872	41.47%
Physics	3,160	3,858	4,271	4,796	4,180	32.28%
TOTAL	62,981	69,126	79,121	88,480	84,692	34.47%
	Spring 2008	Spring 2009	Spring 2010	Spring 2011	Spring 2012	08-12 % chg
Social & Behavioral Sciences						
Anthropology	1,725	2,292	2,922	3,153	2,304	33.57%
Economics	6,189	7,380	8,265	7,689	6,591	6.50%
Educational Instruction	477	585	786	726	627	31.45%
Geography	1,727	2,065	2,665	2,604	2,100	21.60%
Geographic Information Systems ²	.	.	.	179	209	.
Government	14,949	18,462	20,559	20,961	19,746	32.09%
History	19,014	21,189	23,457	24,498	23,151	21.76%
Human Development	1,409	1,530	2,133	2,190	2,382	69.06%
Military Science	18	18	60	54	34	88.89%
Psychology	10,506	12,645	13,572	15,159	15,240	45.06%
Sociology	4,212	5,313	6,825	7,614	6,330	50.28%
TOTAL	60,226	71,479	81,244	84,827	78,714	30.70%
SUBTOTAL FOR ACADEMIC	190,266	215,885	244,470	265,564	251,860	32.37%

¹ Students who enroll in multiple courses are counted once for each course.

² Geographic Information Systems began in Fall 2009.

NOTE: Disciplines are listed under the current (2011-12) dean area; they may have been listed under another dean area in previous years. A "." means that the program did not offer courses that semester.

Source: Spring 12th Class Day Data

Semester Credit Hours¹
Workforce Areas
Spring 2008 - 2012

Applied Technologies, Multimedia, & Public Services	Spring 2008	Spring 2009	Spring 2010	Spring 2011	Spring 2012	08-12 % chg
American Sign Language Interpreter Training ²	.	.	.	2,007	2,112	.
Auto Body Collision & Refinishing ³	.	.	299	411	439	.
Automotive Technology & Outdoor Powered Equipment	1,865	2,042	2,280	2,864	2,600	39.41%
Building Construction Technology	1,439	1,549	1,578	1,723	1,656	15.08%
Child Care & Development	1,550	1,577	1,533	1,371	1,306	-15.74%
Commercial Music Management	1,428	1,510	1,584	1,717	1,597	11.83%
Criminal Justice	2,366	2,557	2,997	3,575	3,668	55.03%
Fire Protection Technology	966	1,032	1,103	1,160	1,200	24.22%
Heating, AC, & Refrigeration Technology	802	944	1,054	1,248	1,202	49.88%
Human Services	2,453	2,542	2,801	1,518	1,486	-39.42%
Jewelry	548	572	484	540	612	11.68%
Music	1,655	1,798	1,849	1,934	2,047	23.69%
Paralegal	768	951	996	1,104	1,164	51.56%
Photographic Technology	1,497	1,549	1,793	1,920	1,737	16.03%
Radio-TV-Film	897	1,131	1,326	1,461	1,554	73.24%
Welding Technology	1,244	1,392	1,380	1,676	1,692	36.01%
TOTAL	19,478	21,146	23,057	26,229	26,072	33.85%
Business Studies	Spring 2008	Spring 2009	Spring 2010	Spring 2011	Spring 2012	08-12 % chg
Accounting	4,202	4,587	5,283	5,901	5,546	31.98%
Business & Technical Communications	515	604	898	1,013	1,213	135.53%
Culinary Arts	610	593	778	941	1,072	75.74%
Financial Management	552	411	561	561	399	-27.72%
Hospitality Management	528	585	690	840	780	47.73%
International Business	243	243	345	354	198	-18.52%
Management	3,686	4,080	5,007	4,588	4,563	23.79%
Marketing	1,419	1,377	1,656	1,791	1,461	2.96%
Meeting & Events Planning	93	81	141	111	141	51.61%
Office Administration	905	998	1,335	1,465	1,273	40.66%
Real Estate	1,184	896	957	1,025	834	-29.56%
Travel & Tourism	102	42	69	78	96	-5.88%
TOTAL	14,039	14,497	17,720	18,668	17,576	25.19%

¹ Students who enroll in multiple courses are counted once for each course.

² American Sign Language Interpreter Training began in Fall 2010.

³ Auto Body Collision & Refinishing began in Fall 2008.

NOTE: Disciplines are listed under the current (2011-12) dean area; they may have been listed under another dean area in previous years. A "." means that the program did not offer courses that semester.

Source: Spring 12th Class Day Data

**Semester Credit Hours¹
Workforce Areas
Spring 2008 - 2012**

Computer Studies & Advanced Technology	Spring 2008	Spring 2009	Spring 2010	Spring 2011	Spring 2012	08-12 % chg
Architectural & Engineering CAD	2,152	2,188	2,236	2,152	2,240	4.09%
Computer Information Technology	3,469	4,143	4,930	5,441	5,309	53.04%
Computer Science	3,999	4,580	5,360	5,563	5,671	41.81%
Electronics & Advanced Technology	975	1,149	1,336	1,552	1,388	42.36%
Land Surveying Technology/Geomatics	185	126	89	141	127	-31.35%
Visual Communication	4,166	4,845	5,596	5,780	5,635	35.26%
TOTAL	14,946	17,031	19,547	20,629	20,370	36.29%
Health Sciences	Spring 2008	Spring 2009	Spring 2010	Spring 2011	Spring 2012	08-12 % chg
Allied Health Sciences	2,346	2,532	2,792	3,211	3,119	32.95%
Dental Hygiene	209	225	214	210	214	2.39%
Diagnostic Medical Imaging Radiology	471	542	555	639	705	49.68%
Emergency Medical Services Professions	649	890	961	967	1,050	61.79%
Health & Kinesiology	2,886	3,093	3,655	3,810	3,569	23.67%
Health Information Technology	233	264	468	463	453	94.42%
Medical Lab Technology	191	281	274	400	366	91.62%
Nursing - Professional	4,313	5,072	5,061	5,202	4,893	13.45%
Nursing - Vocational	1,328	1,171	1,376	1,552	1,363	2.64%
Occupational Therapy Assistant	180	307	344	352	365	102.78%
Personal Fitness Trainer	101	70	91	146	168	66.34%
Pharmacy Technology	360	471	577	536	541	50.28%
Physical Therapist Assistant	319	268	340	382	440	37.93%
Sonography	259	327	371	290	320	23.55%
Surgical Technology	320	342	342	370	390	21.88%
TOTAL	14,165	15,855	17,421	18,530	17,956	26.76%
SUBTOTAL FOR WORKFORCE	62,628	68,529	77,745	84,056	81,974	30.89%
GRAND TOTAL (Academic & Workforce)	252,894	284,414	322,215	349,620	333,834	32.01%

¹ Students who enroll in multiple courses are counted once for each course.

NOTE: Disciplines are listed under the current (2011-12) dean area; they may have been listed under another dean area in previous years.

Source: Spring 12th Class Day Data

**Contact Hours¹
Academic Areas
Spring 2008 - 2012**

Arts & Humanities	Spring 2008	Spring 2009	Spring 2010	Spring 2011	Spring 2012	08-12 % chg
Arabic	1,520	2,320	2,048	2,480	2,144	41.05%
Art	120,000	132,768	141,536	158,736	152,016	26.68%
Chinese	1,392	1,744	2,048	1,600	1,760	26.44%
Creative Writing	7,872	10,944	11,328	11,952	11,856	50.61%
Dance	9,328	8,224	13,040	13,184	13,952	49.57%
Drama	17,328	26,032	29,376	35,680	31,648	82.64%
English for Speakers of Other	41,472	47,872	58,368	69,168	73,312	76.77%
French	20,432	24,560	28,336	27,248	26,512	29.76%
German	8,496	9,440	10,496	10,480	9,584	12.81%
Humanities	12,864	15,024	22,992	32,400	32,112	149.63%
Japanese	13,072	15,168	15,744	13,728	14,464	10.65%
Latin	2,384	1,280	2,112	2,352	4,448	86.58%
Philosophy	97,824	109,200	114,000	128,976	119,760	22.42%
Religion	3,600	5,040	7,104	5,328	6,720	86.67%
Russian	1,920	2,000	2,336	1,328	1,648	-14.17%
Spanish	168,976	181,040	191,424	208,928	183,728	8.73%
TOTAL	528,480	592,656	652,288	723,568	685,664	29.74%
Communications	Spring 2008	Spring 2009	Spring 2010	Spring 2011	Spring 2012	08-12 % chg
English	408,336	438,960	491,136	522,048	498,768	22.15%
Journalism	10,176	13,616	14,688	14,544	13,872	36.32%
Reading - Developmental	37,872	50,480	63,120	73,264	71,984	90.07%
Speech	122,784	137,520	157,488	168,384	166,176	35.34%
Study Skills	1,696	2,304	2,976	3,520	4,912	189.62%
Writing - Developmental	29,680	41,404	47,392	61,920	60,752	104.69%
TOTAL	610,544	684,284	776,800	843,680	816,464	33.73%

¹ Students who enroll in multiple courses are counted once for each course.

NOTE: Disciplines are listed under the current (2011-12) dean area; they may have been listed under another dean area in previous years. A "." means that the program did not offer courses that semester.

Source: Spring 12th Class Day Data

**Contact Hours¹
Academic Areas
Spring 2008 - 2012**

Math & Sciences	Spring 2008	Spring 2009	Spring 2010	Spring 2011	Spring 2012	08-12 % chg
Astronomy	13,968	16,800	21,936	26,160	23,232	66.32%
Biology	302,432	326,976	380,528	457,440	431,200	42.58%
Biotechnology	9,440	9,264	4,800	7,008	6,400	-32.20%
Chemistry	150,912	150,384	179,664	206,256	202,464	34.16%
Engineering	2,480	2,896	4,336	5,072	5,872	136.77%
Environmental Science & Technology	15,120	14,336	15,792	15,680	12,672	-16.19%
Geology	41,568	43,872	52,128	51,552	46,272	11.32%
Mathematics	294,896	312,624	343,840	381,056	368,144	24.84%
Mathematics - Developmental	374,656	431,344	501,328	540,784	528,688	41.11%
Physics	75,456	92,160	101,616	114,144	100,320	32.95%
TOTAL	1,280,928	1,400,656	1,605,968	1,805,152	1,725,264	34.69%
Social & Behavioral Sciences	Spring 2008	Spring 2009	Spring 2010	Spring 2011	Spring 2012	08-12 % chg
Anthropology	28,080	36,912	47,328	50,832	37,488	33.50%
Economics	99,024	118,080	132,240	123,024	105,456	6.50%
Educational Instruction	7,632	9,360	12,576	11,616	10,032	31.45%
Geography	29,328	36,048	45,552	44,160	36,384	24.06%
Geographic Information Systems ²	.	.	.	4,560	5,232	.
Government	240,080	296,416	329,776	336,144	316,832	31.97%
History	304,224	339,024	375,312	391,968	370,416	21.76%
Human Development	27,312	28,968	39,648	41,496	46,176	69.07%
Military Science	432	432	1,440	1,296	816	88.89%
Psychology	168,240	202,608	217,152	242,544	243,840	44.94%
Sociology	67,392	85,056	109,200	121,824	101,280	50.28%
TOTAL	971,744	1,152,904	1,310,224	1,369,464	1,273,952	31.10%
SUBTOTAL FOR ACADEMIC	3,391,696	3,830,500	4,345,280	4,741,864	4,501,344	32.72%

¹ Students who enroll in multiple courses are counted once for each course.

² Geographic Information Systems began in Fall 2009.

NOTE: Disciplines are listed under the current (2011-12) dean area; they may have been listed under another dean area in previous years. A "." means that the program did not offer courses that semester.

Source: Spring 12th Class Day Data

**Contact Hours¹
Workforce Areas
Spring 2008 - 2012**

Applied Technologies, Multimedia, & Public Services	Spring 2008	Spring 2009	Spring 2010	Spring 2011	Spring 2012	08-12 % chg
American Sign Language Interpreter Training ²	.	.	.	49,120	52,400	.
Auto Body Collision & Refinishing ³	.	.	8,784	10,464	12,944	.
Automotive Technology & Outdoor Powered Equipment	47,104	52,128	57,408	71,872	66,016	40.15%
Building Construction Technology	32,752	36,016	36,240	38,160	37,280	13.83%
Child Care & Development	36,752	37,968	37,760	33,872	32,144	-12.54%
Commercial Music Management	31,440	33,536	35,936	38,352	35,760	13.74%
Criminal Justice	40,096	42,128	50,768	59,504	62,080	54.83%
Fire Protection Technology	21,088	21,696	23,600	24,544	25,536	21.09%
Heating, AC, & Refrigeration Technology	19,648	23,456	26,656	31,712	30,848	57.00%
Human Services	52,848	57,360	61,792	27,216	27,376	-48.20%
Jewelry	13,152	13,728	11,616	12,960	14,688	11.68%
Music	34,104	37,008	38,224	42,744	39,536	15.93%
Paralegal	14,448	18,336	19,776	20,544	21,984	52.16%
Photographic Technology	58,720	61,248	71,024	76,848	70,000	19.21%
Radio-TV-Film	18,816	24,416	28,128	30,448	33,312	77.04%
Welding Technology	29,856	33,536	33,120	40,352	40,736	36.44%
TOTAL	450,824	492,560	540,832	608,712	602,640	33.68%
Business Studies	Spring 2008	Spring 2009	Spring 2010	Spring 2011	Spring 2012	08-12 % chg
Accounting	89,264	97,104	109,312	122,416	114,256	28.00%
Business & Technical Communications	8,240	9,664	14,656	16,496	19,408	135.53%
Culinary Arts	13,968	13,600	18,400	22,672	26,656	90.84%
Financial Management	8,832	6,576	8,976	8,976	6,384	-27.72%
Hospitality Management	10,528	10,368	13,584	16,272	17,344	64.74%
International Business	3,888	3,888	5,520	5,664	3,168	-18.52%
Management	59,696	65,520	81,072	73,408	73,248	22.70%
Marketing	22,704	22,032	26,496	28,656	23,376	2.96%
Meeting & Events Planning	1,488	1,296	2,256	1,776	2,256	51.61%
Office Administration	21,024	23,632	31,456	33,744	29,872	42.09%
Real Estate	18,944	14,336	15,312	16,400	13,344	-29.56%
Travel & Tourism	1,744	672	1,232	1,568	1,888	8.26%
TOTAL	260,320	268,688	328,272	348,048	331,200	27.23%

¹ Students who enroll in multiple courses are counted once for each course.

² American Sign Language Interpreter Training began in Fall 2010.

³ Auto Body Collision & Refinishing began in Fall 2008.

NOTE: Disciplines are listed under the current (2011-12) dean area; they may have been listed under another dean area in previous years. A "." means that the program did not offer courses that semester.

Source: Spring 12th Class Day Data

ENROLLMENT BY AREA

Contact Hours¹ Workforce Areas Spring 2008 - 2012

Computer Studies & Advanced Technology	Spring 2008	Spring 2009	Spring 2010	Spring 2011	Spring 2012	08-12 % chg
Architectural & Engineering CAD	51,648	52,512	53,664	51,648	53,760	4.09%
Computer Information Technology	80,176	94,880	112,256	124,224	121,536	51.59%
Computer Science	85,984	98,304	115,168	119,584	121,888	41.76%
Electronics & Advanced Technology	24,000	29,024	32,272	37,600	33,520	39.67%
Land Surveying Technology/Geomatics	4,448	3,648	1,808	2,640	2,800	-37.05%
Visual Communication	102,880	119,792	137,536	143,856	140,512	36.58%
TOTAL	349,136	398,160	452,704	479,552	474,016	35.77%
Health Sciences	Spring 2008	Spring 2009	Spring 2010	Spring 2011	Spring 2012	08-12 % chg
Allied Health Sciences	37,536	40,512	44,672	51,376	49,904	32.95%
Dental Hygiene	10,000	10,832	10,560	10,240	10,560	5.60%
Diagnostic Medical Imaging Radiology	23,296	25,184	28,032	29,888	35,040	50.41%
Emergency Medical Services Professions	23,104	31,606	32,792	31,640	37,258	61.26%
Health & Kinesiology	107,904	113,952	133,104	142,128	131,088	21.49%
Health Information Technology	5,264	5,648	8,528	8,896	8,672	64.74%
Medical Lab Technology	6,944	10,448	9,936	15,632	16,512	137.79%
Nursing - Professional	151,312	179,232	176,624	181,728	170,544	12.71%
Nursing - Vocational	39,776	35,488	42,304	45,856	42,608	7.12%
Occupational Therapy Assistant	6,672	11,600	14,720	14,208	15,392	130.70%
Personal Fitness Trainer	2,000	1,440	1,872	3,200	3,648	82.40%
Pharmacy Technology	10,016	12,208	16,848	14,848	14,832	48.08%
Physical Therapist Assistant	12,336	10,464	12,784	14,400	16,512	33.85%
Sonography	12,544	16,320	18,368	16,800	18,320	46.05%
Surgical Technology	11,120	11,888	11,888	13,120	13,920	25.18%
TOTAL	459,824	516,822	563,032	593,960	584,810	27.18%
SUBTOTAL FOR WORKFORCE	1,520,104	1,676,230	1,884,840	2,030,272	1,992,666	31.09%
GRAND TOTAL (Academic & Workforce)	4,911,800	5,506,730	6,230,120	6,772,136	6,494,010	32.21%

¹ Students who enroll in multiple courses are counted once for each course.

NOTE: Disciplines are listed under the current (2011-12) dean area; they may have been listed under another dean area in previous years.

Source: Spring 12th Class Day Data

**Distance Learning¹ Course Enrollment and Contact Hours
Spring 2008 - 2012**

	Spring 2008	Spring 2009	Spring 2010	Spring 2011	Spring 2012	08-12 % chg
COURSE ENROLLMENT²						
Directed Study (DIR)	328	260	254	236	212	-35.37%
Hybrid (HYD) ³	.	269	670	758	997	.
Instructional Television (ITV)	899	793	755	728	386	-57.06%
Online (ONL)	9,457	10,261	11,704	12,324	13,026	37.74%
Print-Based (PRN)	366	367	415	379	404	10.38%
Unknown ⁴	.	1
TOTAL	11,050	11,951	13,798	14,425	15,025	35.97%

	Spring 2008	Spring 2009	Spring 2010	Spring 2011	Spring 2012	08-12 % chg
CONTACT HOURS⁵						
Directed Study (DIR)	36,608	24,816	22,720	20,432	21,728	-40.65%
Hybrid (HYD) ³	.	12,912	36,304	41,056	53,872	.
Instructional Television (ITV)	43,392	37,728	35,776	34,448	18,336	-57.74%
Online (ONL)	496,400	536,480	607,024	637,384	673,520	35.68%
Print-Based (PRN)	17,600	17,760	19,020	18,192	19,392	10.18%
Unknown ⁴	.	64
TOTAL	594,000	629,760	721,744	751,512	786,848	32.47%

¹ Distance Learning includes non-traditional courses offered through Directed Study, Hybrid courses, Instructional Television, Online, and Print-Based courses. Prior to Fall 2006, Distance Learning also included courses offered in Interactive Video Class format.

² Students who enroll in multiple courses are counted once for each course.

³ Distance Learning Hybrids (HYD) offer students the majority (51% or more) of their course work online via the Internet, with some classroom and/or laboratory meeting times.

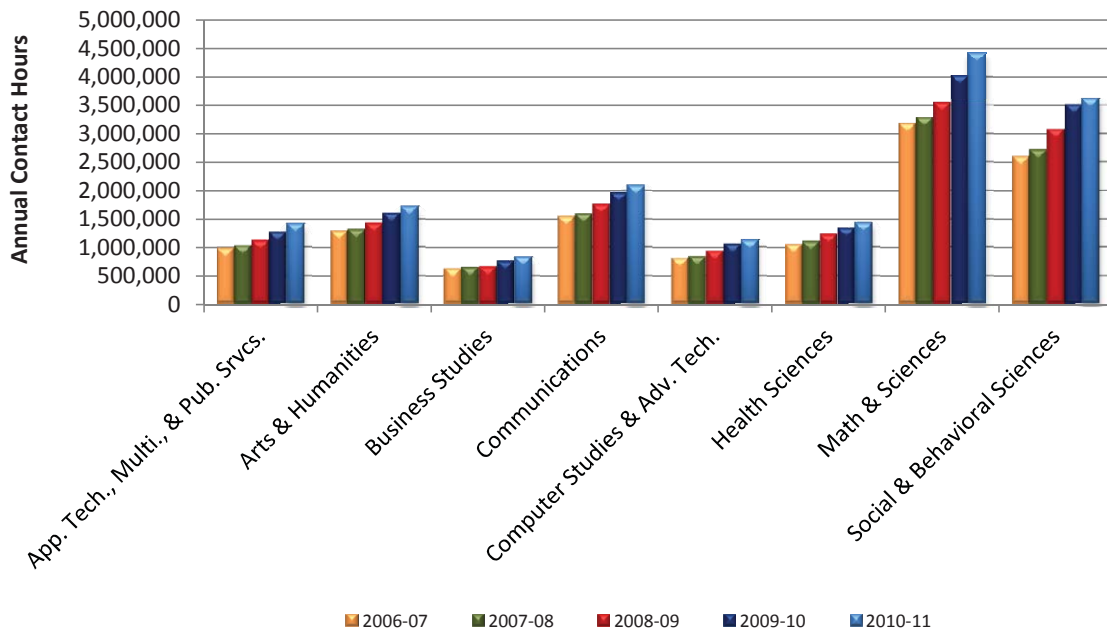
⁴ Delivery method not listed.

⁵ An instructional unit of time in which a student has contact with an instructor; includes lecture and/or laboratory time.

Source: Spring 12th Class Day Data

Annual Contact Hours by Dean Area
Academic Years 2007 - 2011

Dean Area	2006-07	2007-08	2008-09	2009-10	2010-11	07-11 % chg
Applied Technologies, Multimedia, & Public Services	976,054	1,022,520	1,110,776	1,257,288	1,398,760	43.31%
Arts & Humanities	1,281,168	1,300,656	1,414,688	1,588,304	1,706,448	33.19%
Business Studies	616,254	638,560	652,720	753,856	817,008	32.58%
Communications	1,534,688	1,580,384	1,745,440	1,950,240	2,074,848	35.20%
Computer Studies & Advanced Technology	803,472	828,912	927,856	1,052,592	1,106,240	37.68%
Health Sciences	1,042,284	1,092,880	1,219,912	1,330,450	1,420,024	36.24%
Math & Sciences	3,173,760	3,267,744	3,541,600	4,013,872	4,414,992	39.11%
Social & Behavioral Sciences	2,586,440	2,700,368	3,066,040	3,491,152	3,602,936	39.30%
TOTAL	12,014,120	12,432,024	13,679,032	15,437,754	16,541,256	37.68%



NOTE: Disciplines are listed under the current (2010-11) dean area; they may have been included in another dean area in previous years.

Source: Fall 12th Class Day Data

THIS PAGE INTENTIONALLY LEFT BLANK