

# Enrollment by Area

*This section can be used for finding:*

- *course enrollment, semester credit hours, and contact hours by program.*
- *student headcount, enrollment, contact hours, and semester credit hours by dean area and location.*

## Contents

Useful Terms .....	158
<b><u>Summer 2012</u></b>	
Student Headcount, Course Enrollment, Contact and Semester Credit Hours by Location .....	159
Course Enrollment .....	160
Academic Areas .....	160
Workforce Areas .....	162
Semester Credit Hours .....	164
Academic Areas .....	164
Workforce Areas .....	166
Contact Hours .....	168
Academic Areas .....	168
Workforce Areas .....	170
Distance Learning Course Enrollment and Contact Hours .....	172
<b><u>Fall 2012</u></b>	
Student Headcount, Course Enrollment, Contact and Semester Credit Hours by Location .....	173
Course Enrollment .....	174
Academic Areas .....	174
Workforce Areas .....	176
Semester Credit Hours .....	178
Academic Areas .....	178
Workforce Areas .....	180
Contact Hours .....	182
Academic Areas .....	182
Workforce Areas .....	184
Distance Learning Course Enrollment and Contact Hours .....	186
<b><u>Spring 2013</u></b>	
Student Headcount, Course Enrollment, Contact and Semester Credit Hours by Location .....	187
Course Enrollment .....	188
Academic Areas .....	188
Workforce Areas .....	190
Semester Credit Hours .....	192
Academic Areas .....	192
Workforce Areas .....	194
Contact Hours .....	196
Academic Areas .....	196
Workforce Areas .....	198
Distance Learning Course Enrollment and Contact Hours .....	200
Annual Contact Hours by Dean Area .....	201

## Useful Terms

**4th Class Day Data (Second 5½ week session)** - data for summer classes, as of the 4<sup>th</sup> day of class of the second 5 1/2 week session. (Official Reporting Date for the Summer Semester)

**12th Class Day Data** - data for Fall or Spring classes, as of the 12th day of class of the 16-week session. (Official Reporting Date for the Fall and Spring Semesters)

**Centers** - locations other than campuses that are staffed, have regular posted hours, and offer credit courses on a regular basis (every semester).

**Contact Hour** - an instructional unit of time in which a student has contact with an instructor; includes both lecture and laboratory time.

**Distance Learning** - includes non-traditional courses offered through Directed Studies, Hybrid courses, Instructional Television, Online, and Print-Based courses.

**Duplicated Headcount** - occurs when a student is counted more than one time because they are enrolled in more than one course. For example, a student who attends several courses at one location and one or more courses at a second location is counted twice, once at each location.

**Enrollment** - the number of students registered for courses.

**Headcount** - the number of students enrolled in one or more courses. This number may be duplicated or unduplicated.

**Reporting Dates** - Fall/Spring: 12th Class Day  
Summer: 4th Class Day of the second 5½ week session

**Semester Credit Hours (SCH)** - a unit of measure of instruction consisting of 60 minutes of which 50 minutes must be direct instruction. For example, PSYC-2301 meets for three hours a week and is worth three semester credit hours.

**Site-Based Instruction** - includes credit classes staffed by ACC but offered at locations not owned by ACC.

**Unduplicated Headcount** - the sum of students enrolled in credit courses with each student counted only once during the reporting period.

**Student Headcount, Course Enrollment, Contact Hours, and Semester  
Credit Hours by Location  
Summer 2012**

<b>Location</b>	<b>Headcount<sup>1</sup></b>	<b>Course Enrollment<sup>2</sup></b>	<b>Contact Hours<sup>3</sup></b>	<b>Semester Credit Hours<sup>4</sup></b>
Cypress Creek Campus	2,610	3,484	203,232	10,443
Eastview Campus	1,816	2,522	214,227	7,246
Northridge Campus	5,530	7,967	480,536	23,678
Pinnacle Campus	1,220	1,506	84,064	4,560
Rio Grande Campus	5,176	7,137	426,976	22,730
Riverside Campus	3,124	4,370	266,696	12,993
Round Rock Campus	2,752	3,966	236,064	11,889
South Austin Campus	1,654	2,175	125,488	6,631
Distance Learning <sup>5</sup>	8,446	11,831	588,096	35,574
Centers <sup>6</sup>	855	1,149	57,072	3,447
Site-Based Instruction <sup>7</sup>	1,845	2,581	131,728	7,747

<sup>1</sup> Students who attend multiple locations are counted once at each location.

<sup>2</sup> Students who enroll in multiple courses are counted once for each course.

<sup>3</sup> A contact hour is an instructional unit of time in which a student has contact with an instructor; includes lecture and/or laboratory time.

<sup>4</sup> Semester Credit Hour (SCH) is a unit of measure of instruction consisting of 60 minutes of which 50 minutes must be directed instruction.

<sup>5</sup> Distance Learning includes non-traditional courses offered through Directed Studies, Hybrid courses, Instructional Television, Online, and Print-Based courses.

<sup>6</sup> Locations, other than campuses, that are staffed, have regular posted hours, and offer credit courses on a regular basis (every semester).

<sup>7</sup> Site-based instruction includes credit classes staffed by ACC but offered at locations not owned by ACC.

**Source:** Summer 4th Class Day Data (Second summer session)

**Course Enrollment<sup>1</sup>  
Academic Areas  
Summer 2008 - 2012**

<b>Arts &amp; Humanities</b>	<b>Summer 2008</b>	<b>Summer 2009</b>	<b>Summer 2010</b>	<b>Summer 2011</b>	<b>Summer 2012</b>	<b>08-12 % chg</b>
Arabic	26	23	26	23	19	-26.92%
Art	694	852	903	886	780	12.39%
Chinese	.	.	22	22	15	.
Creative Writing	55	55	42	62	67	21.82%
Dance	56	42	67	57	58	3.57%
Drama	92	68	207	219	164	78.26%
English for Speakers of Other Languages	250	315	401	435	346	38.40%
French	131	154	163	133	109	-16.79%
German	61	82	84	44	71	16.39%
Humanities	139	141	250	315	195	40.29%
Japanese	48	47	71	59	30	-37.50%
Latin	.	30	29	17	42	.
Philosophy	750	837	913	986	936	24.80%
Religion	48	72	86	52	63	31.25%
Spanish	1,567	1,715	1,944	1,630	1,428	-8.87%
<b>TOTAL</b>	<b>3,917</b>	<b>4,433</b>	<b>5,208</b>	<b>4,940</b>	<b>4,323</b>	<b>10.37%</b>

<b>Communications</b>	<b>Summer 2008</b>	<b>Summer 2009</b>	<b>Summer 2010</b>	<b>Summer 2011</b>	<b>Summer 2012</b>	<b>08-12 % chg</b>
English	3,357	3,926	4,206	3,795	3,608	7.48%
Journalism	78	74	67	94	104	33.33%
Reading - Developmental	235	318	440	393	343	45.96%
Speech	1,739	2,088	2,274	2,412	2,245	29.10%
Writing - Developmental	164	233	294	338	309	88.41%
<b>TOTAL</b>	<b>5,573</b>	<b>6,639</b>	<b>7,281</b>	<b>7,032</b>	<b>6,609</b>	<b>18.59%</b>

<sup>1</sup> Students who enroll in more than one course are counted once for each course.

NOTE: Disciplines are listed under the current (2011-12) dean area; they may have been listed under another dean area in previous years. A "." means that the program did not offer courses that semester.

Source: Summer 4th Class Day Data (Second summer session)

**Course Enrollment<sup>1</sup>  
Academic Areas  
Summer 2008 - 2012**

<b>Math &amp; Sciences</b>	<b>Summer 2008</b>	<b>Summer 2009</b>	<b>Summer 2010</b>	<b>Summer 2011</b>	<b>Summer 2012</b>	<b>08-12 % chg</b>
Astronomy	112	115	172	142	105	-6.25%
Biology	2,145	2,605	2,802	2,918	2,787	29.93%
Biotechnology	24	37	32	7	31	29.17%
Chemistry	844	1,908	2,024	2,296	2,182	158.53%
Engineering	14	.	59	51	40	185.71%
Environmental Science & Technology	44	52	55	59	59	34.09%
Geology	238	264	347	260	193	-18.91%
Mathematics	2,826	3,188	3,373	3,565	3,323	17.59%
Mathematics - Developmental	2,181	2,562	3,193	3,001	2,903	33.10%
Physics	895	1,013	1,058	1,032	1,051	17.43%
<b>TOTAL</b>	<b>9,323</b>	<b>11,744</b>	<b>13,115</b>	<b>13,331</b>	<b>12,674</b>	<b>35.94%</b>
<b>Social &amp; Behavioral Sciences</b>	<b>Summer 2008</b>	<b>Summer 2009</b>	<b>Summer 2010</b>	<b>Summer 2011</b>	<b>Summer 2012</b>	<b>08-12 % chg</b>
Anthropology	313	291	432	329	294	-6.07%
Economics	1,855	2,107	2,337	2,075	1,891	1.94%
Educational Instruction	22	49	43	38	29	31.82%
Geographic Information Systems <sup>2</sup>	.	.	.	1	3	.
Geography	373	380	382	335	278	-25.47%
Government	4,441	4,926	5,426	5,038	4,637	4.41%
History	4,977	5,601	5,945	6,050	5,301	6.51%
Human Development	113	205	351	263	206	82.30%
Psychology	1,202	1,472	1,937	1,746	1,543	28.37%
Sociology	550	615	834	676	460	-16.36%
<b>TOTAL</b>	<b>13,846</b>	<b>15,646</b>	<b>17,687</b>	<b>16,551</b>	<b>14,642</b>	<b>5.75%</b>
<b>SUBTOTAL FOR ACADEMIC</b>	<b>32,659</b>	<b>38,462</b>	<b>43,291</b>	<b>41,854</b>	<b>38,248</b>	<b>17.11%</b>

<sup>1</sup> Students who enroll in more than one course are counted once for each course.

<sup>2</sup> Geographic Information Systems began in Fall 2009; previously, enrollments were reported under Geography until Fall 2010.

NOTE: Disciplines are listed under the current (2011-12) dean area; they may have been listed under another dean area in previous years. A "." means that the program did not offer courses that semester.

Source: Summer 4th Class Day Data (Second summer session)

**Course Enrollment<sup>1</sup>  
Workforce Areas  
Summer 2008 - 2012**

<b>Applied Technologies, Multimedia, &amp; Public Services</b>	<b>Summer 2008</b>	<b>Summer 2009</b>	<b>Summer 2010</b>	<b>Summer 2011</b>	<b>Summer 2012</b>	<b>08-12 % chg</b>
American Sign Lang. Interpreter Train. <sup>2</sup>	.	.	.	249	193	.
Auto Body Collision & Refinishing <sup>3</sup>	.	41	31	50	46	.
Automotive Technology & Outdoor Powered Equipment	141	165	198	246	196	39.01%
Building Construction Technology	176	165	188	183	131	-25.57%
Child Care & Development	156	104	208	153	146	-6.41%
Commercial Music Management	122	144	166	163	170	39.34%
Criminal Justice	248	330	395	457	407	64.11%
Fire Protection Technology	27	25	55	22	61	125.93%
Heating, AC, & Refrigeration Technology	48	120	137	158	140	191.67%
Human Services	273	310	390	191	181	-33.70%
Jewelry	56	55	50	49	42	-25.00%
Music	311	336	373	362	323	3.86%
Paralegal	142	165	201	222	184	29.58%
Photographic Technology	146	186	216	156	185	26.71%
Radio-TV-Film	76	127	126	141	165	117.11%
Welding Technology	101	134	152	184	188	86.14%
<b>TOTAL</b>	<b>2,023</b>	<b>2,407</b>	<b>2,886</b>	<b>2,986</b>	<b>2,758</b>	<b>36.33%</b>

<b>Business Studies</b>	<b>Summer 2008</b>	<b>Summer 2009</b>	<b>Summer 2010</b>	<b>Summer 2011</b>	<b>Summer 2012</b>	<b>08-12 % chg</b>
Accounting	906	993	978	1,034	993	9.60%
Business & Technical Communications	78	110	146	144	208	166.67%
Culinary Arts	19	53	71	144	111	484.21%
Financial Management	68	78	87	58	34	-50.00%
Hospitality Management	46	45	63	71	55	19.57%
International Business	29	19	15	17	23	-20.69%
Management	404	416	475	473	489	21.04%
Marketing	149	183	228	150	126	-15.44%
Meeting & Events Planning	11	11	10	12	9	-18.18%
Office Administration	155	200	230	210	143	-7.74%
Real Estate	180	131	132	154	105	-41.67%
Travel & Tourism	.	6	15	13	13	.
<b>TOTAL</b>	<b>2,045</b>	<b>2,245</b>	<b>2,450</b>	<b>2,480</b>	<b>2,309</b>	<b>12.91%</b>

<sup>1</sup> Students who enroll in more than one course are counted once for each course.

<sup>2</sup> American Sign Language Interpreter Training began in Fall 2010.

<sup>3</sup> Auto Body Collision & Refinishing began in Fall 2008; previously, enrollments were reported under Automotive Technology until Summer 2009.

NOTE: Disciplines are listed under the current (2011-12) dean area; they may have been listed under another dean area in previous years. A "." means that the program did not offer courses that semester.

Source: Summer 4th Class Day Data (Second summer session)

**Course Enrollment<sup>1</sup>  
Workforce Areas  
Summer 2008 - 2012**

<b>Computer Studies &amp; Advanced Technology</b>	<b>Summer 2008</b>	<b>Summer 2009</b>	<b>Summer 2010</b>	<b>Summer 2011</b>	<b>Summer 2012</b>	<b>08-12 % chg</b>
Architectural & Engineering CAD	200	230	221	220	184	-8.00%
Computer Information Technology	296	430	500	466	471	59.12%
Computer Science	620	733	776	707	665	7.26%
Electronics & Advanced Technology	147	145	177	173	126	-14.29%
Land Surveying Technology/Geomatics	.	11	10	.	9	.
Visual Communication	393	513	579	615	629	60.05%
<b>TOTAL</b>	<b>1,656</b>	<b>2,062</b>	<b>2,263</b>	<b>2,181</b>	<b>2,084</b>	<b>25.85%</b>
<b>Health Sciences</b>	<b>Summer 2008</b>	<b>Summer 2009</b>	<b>Summer 2010</b>	<b>Summer 2011</b>	<b>Summer 2012</b>	<b>08-12 % chg</b>
Allied Health Sciences	470	578	652	706	566	20.43%
Dental Hygiene	.	18	14	18	15	.
Diagnostic Medical Imaging Radiology	126	158	149	185	204	61.90%
Emergency Medical Services Professions	196	273	258	258	293	49.49%
Health and Kinesiology	860	1,124	1,177	1,236	1,079	25.47%
Health Information Technology	44	66	86	147	93	111.36%
Medical Lab Technology	67	83	119	180	159	137.31%
Nursing - Professional	531	570	354	409	314	-40.87%
Nursing - Vocational	190	161	179	255	160	-15.79%
Occupational Therapy Assistant	30	56	72	69	74	146.67%
Personal Fitness Trainer	5	5	6	7	4	-20.00%
Pharmacy Technology	56	57	83	73	79	41.07%
Physical Therapist Assistant	101	126	82	38	37	-63.37%
Sonography	150	167	157	171	143	-4.67%
Surgical Technology	50	52	56	58	60	20.00%
<b>TOTAL</b>	<b>2,876</b>	<b>3,494</b>	<b>3,444</b>	<b>3,810</b>	<b>3,280</b>	<b>14.05%</b>
<b>SUBTOTAL FOR WORKFORCE</b>	<b>8,600</b>	<b>10,208</b>	<b>11,043</b>	<b>11,457</b>	<b>10,431</b>	<b>21.29%</b>
<b>GRAND TOTAL (Academic &amp; Workforce)</b>	<b>41,259</b>	<b>48,670</b>	<b>54,334</b>	<b>53,311</b>	<b>48,679</b>	<b>17.98%</b>

<sup>1</sup> Students who enroll in more than one course are counted once for each course.

NOTE: Disciplines are listed under the current (2011-12) dean area; they may have been listed under another dean area in previous years. A "." means that the program did not offer courses that semester.

Source: Summer 4th Class Day Data (Second summer session)

**Semester Credit Hours<sup>1</sup>  
Academic Areas  
Summer 2008 - 2012**

<b>Arts &amp; Humanities</b>	<b>Summer 2008</b>	<b>Summer 2009</b>	<b>Summer 2010</b>	<b>Summer 2011</b>	<b>Summer 2012</b>	<b>08-12 % chg</b>
Arabic	130	115	130	115	95	-26.92%
Art	2,082	2,556	2,709	2,658	2,340	12.39%
Chinese	.	.	110	110	75	.
Creative Writing	165	165	126	186	201	21.82%
Dance	99	73	123	96	95	-4.04%
Drama	276	204	621	657	492	78.26%
English for Speakers of Other Languages	750	945	1,203	1,305	1,038	38.40%
French	525	580	619	495	441	-16.00%
German	243	338	344	220	303	24.69%
Humanities	417	423	750	945	585	40.29%
Japanese	240	235	355	295	150	-37.50%
Latin	.	150	145	85	210	.
Philosophy	2,250	2,511	2,739	2,958	2,808	24.80%
Religion	144	216	258	156	189	31.25%
Spanish	6,471	7,151	8,036	6,938	6,002	-7.25%
<b>TOTAL</b>	<b>13,792</b>	<b>15,662</b>	<b>18,268</b>	<b>17,219</b>	<b>15,024</b>	<b>8.93%</b>

<b>Communications</b>	<b>Summer 2008</b>	<b>Summer 2009</b>	<b>Summer 2010</b>	<b>Summer 2011</b>	<b>Summer 2012</b>	<b>08-12 % chg</b>
English	10,071	11,778	12,618	11,385	10,824	7.48%
Journalism	234	222	201	282	312	33.33%
Reading - Developmental	705	954	1,316	1,179	1,029	45.96%
Speech	5,217	6,264	6,822	7,236	6,735	29.10%
Writing - Developmental	490	699	882	1,014	927	89.18%
<b>TOTAL</b>	<b>16,717</b>	<b>19,917</b>	<b>21,839</b>	<b>21,096</b>	<b>19,827</b>	<b>18.60%</b>

<sup>1</sup> Students who enroll in more than one course are counted once for each course.

NOTE: Disciplines are listed under the current (2011-12) dean area; they may have been listed under another dean area in previous years. A "." means that the program did not offer courses that semester.

Source: Summer 4th Class Day Data (Second summer session)



**Semester Credit Hours<sup>1</sup>  
Academic Areas  
Summer 2008 - 2012**

<b>Math &amp; Sciences</b>	<b>Summer 2008</b>	<b>Summer 2009</b>	<b>Summer 2010</b>	<b>Summer 2011</b>	<b>Summer 2012</b>	<b>08-12 % chg</b>
Astronomy	336	345	535	448	337	0.30%
Biology	6,433	7,894	8,425	8,641	8,239	28.07%
Biotechnology	87	138	128	28	124	42.53%
Chemistry	3,376	3,840	4,064	4,608	4,384	29.86%
Engineering	28	.	155	131	105	275.00%
Environmental Science & Technology	132	156	166	178	179	35.61%
Geology	782	882	1,157	887	671	-14.19%
Mathematics	9,376	10,616	11,145	11,812	11,138	18.79%
Mathematics - Developmental	6,505	7,674	9,569	8,981	8,707	33.85%
Physics	3,580	4,052	4,232	4,128	4,204	17.43%
<b>TOTAL</b>	<b>30,635</b>	<b>35,597</b>	<b>39,576</b>	<b>39,842</b>	<b>38,088</b>	<b>24.33%</b>
<b>Social &amp; Behavioral Sciences</b>	<b>Summer 2008</b>	<b>Summer 2009</b>	<b>Summer 2010</b>	<b>Summer 2011</b>	<b>Summer 2012</b>	<b>08-12 % chg</b>
Anthropology	939	873	1,296	987	882	-6.07%
Economics	5,565	6,321	7,011	6,225	5,673	1.94%
Educational Instruction	66	147	129	114	87	31.82%
Geographic Information Systems <sup>2</sup>	.	.	.	2	4	.
Geography	1,119	1,165	1,172	1,028	868	-22.43%
Government	13,323	14,778	16,278	15,114	13,911	4.41%
History	14,931	16,803	17,835	18,150	15,903	6.51%
Human Development	145	337	655	449	330	127.59%
Psychology	3,606	4,416	5,811	5,238	4,629	28.37%
Sociology	1,650	1,845	2,502	2,028	1,380	-16.36%
<b>TOTAL</b>	<b>41,344</b>	<b>46,685</b>	<b>52,689</b>	<b>49,335</b>	<b>43,667</b>	<b>5.62%</b>
<b>SUBTOTAL FOR ACADEMIC</b>	<b>102,488</b>	<b>117,861</b>	<b>132,372</b>	<b>127,492</b>	<b>116,606</b>	<b>13.78%</b>

<sup>1</sup> Students who enroll in more than one course are counted once for each course.

<sup>2</sup> Geographic Information Systems began in Fall 2009; previously, enrollments were reported under Geography until Fall 2010.

NOTE: Disciplines are listed under the current (2011-12) dean area; they may have been listed under another dean area in previous years. A "." means that the program did not offer courses that semester.

Source: Summer 4th Class Day Data (Second summer session)

**Semester Credit Hours<sup>1</sup>  
Workforce Areas  
Summer 2008 - 2012**

<b>Applied Technologies, Multimedia, &amp; Public Services</b>	<b>Summer 2008</b>	<b>Summer 2009</b>	<b>Summer 2010</b>	<b>Summer 2011</b>	<b>Summer 2012</b>	<b>08-12 % chg</b>
American Sign Lang. Interpreter Train. <sup>2</sup>	.	.	.	861	671	.
Auto Body Collision & Refinishing <sup>3</sup>	.	164	116	174	166	.
Automotive Technology & Outdoor Powered Equipment	558	660	792	984	784	40.50%
Building Construction Technology	599	591	662	682	465	-22.37%
Child Care & Development	509	381	719	541	493	-3.14%
Commercial Music Management	349	405	463	465	505	44.70%
Criminal Justice	801	1,028	1,256	1,416	1,289	60.92%
Fire Protection Technology	81	75	165	66	183	125.93%
Heating, AC, & Refrigeration Technology	182	456	512	590	534	193.41%
Human Services	970	1,028	1,311	599	573	-40.93%
Jewelry	224	220	200	196	168	-25.00%
Music	721	794	892	849	827	14.70%
Paralegal	426	495	603	666	552	29.58%
Photographic Technology	428	555	632	447	525	22.66%
Radio-TV-Film	228	381	378	423	495	117.11%
Welding Technology	404	536	608	736	752	86.14%
<b>TOTAL</b>	<b>6,480</b>	<b>7,769</b>	<b>9,309</b>	<b>9,695</b>	<b>8,982</b>	<b>38.61%</b>

<b>Business Studies</b>	<b>Summer 2008</b>	<b>Summer 2009</b>	<b>Summer 2010</b>	<b>Summer 2011</b>	<b>Summer 2012</b>	<b>08-12 % chg</b>
Accounting	2,619	2,999	2,952	3,117	2,991	14.20%
Business & Technical Communications	234	335	447	435	645	175.64%
Culinary Arts	57	135	191	372	298	422.81%
Financial Management	204	234	261	174	102	-50.00%
Hospitality Management	138	135	189	213	165	19.57%
International Business	87	57	45	51	69	-20.69%
Management	1,212	1,248	1,425	1,419	1,467	21.04%
Marketing	447	549	684	450	378	-15.44%
Meeting & Events Planning	33	33	30	36	27	-18.18%
Office Administration	361	485	557	511	362	0.28%
Real Estate	577	388	430	516	353	-38.82%
Travel & Tourism	.	18	45	39	39	.
<b>TOTAL</b>	<b>5,969</b>	<b>6,616</b>	<b>7,256</b>	<b>7,333</b>	<b>6,896</b>	<b>15.53%</b>

<sup>1</sup> Students who enroll in more than one course are counted once for each course.

<sup>2</sup> American Sign Language Interpreter Training began in Fall 2010.

<sup>3</sup> Auto Body Collision & Refinishing began in Fall 2008; previously, enrollments were reported under Automotive Technology until Summer 2009.

NOTE: Disciplines are listed under the current (2011-12) dean area; they may have been listed under another dean area in previous years. A "." means that the program did not offer courses that semester.

Source: Summer 4th Class Day Data (Second summer session)

**Semester Credit Hours<sup>1</sup>  
Workforce Areas  
Summer 2008 - 2012**

<b>Computer Studies &amp; Advanced Technology</b>	<b>Summer 2008</b>	<b>Summer 2009</b>	<b>Summer 2010</b>	<b>Summer 2011</b>	<b>Summer 2012</b>	<b>08-12 % chg</b>
Architectural & Engineering CAD	800	920	884	880	736	-8.00%
Computer Information Technology	924	1,329	1,535	1,433	1,444	56.28%
Computer Science	1,875	2,210	2,345	2,143	2,013	7.36%
Electronics & Advanced Technology	479	548	651	653	461	-3.76%
Land Surveying Technology/Geomatics	.	33	30	.	27	.
Visual Communication Design	1,474	1,938	2,166	2,221	2,319	57.33%
<b>TOTAL</b>	<b>5,552</b>	<b>6,978</b>	<b>7,611</b>	<b>7,330</b>	<b>7,000</b>	<b>26.08%</b>
<b>Health Sciences</b>	<b>Summer 2008</b>	<b>Summer 2009</b>	<b>Summer 2010</b>	<b>Summer 2011</b>	<b>Summer 2012</b>	<b>08-12 % chg</b>
Allied Health Sciences	1,169	1,462	1,596	1,755	1,419	21.39%
Dental Hygiene	.	36	28	36	30	.
Diagnostic Medical Imaging Radiology	330	406	387	473	531	60.91%
Emergency Medical Services Professions	542	729	667	683	782	44.28%
Health & Kinesiology	1,254	1,644	1,695	1,812	1,561	24.48%
Health Information Technology	128	190	241	389	257	100.78%
Medical Lab Technology	132	168	227	325	311	135.61%
Nursing - Professional	993	1,173	779	817	603	-39.27%
Nursing - Vocational	792	678	725	1,065	672	-15.15%
Occupational Therapy Assistant	75	140	180	172	185	146.67%
Personal Fitness Trainer	10	10	12	14	8	-20.00%
Pharmacy Technology	168	181	259	223	245	45.83%
Physical Therapist Assistant	259	375	220	152	148	-42.86%
Sonography	342	385	423	439	375	9.65%
Surgical Technology	250	260	280	290	300	20.00%
<b>TOTAL</b>	<b>6,444</b>	<b>7,837</b>	<b>7,719</b>	<b>8,645</b>	<b>7,427</b>	<b>15.25%</b>
<b>SUBTOTAL FOR WORKFORCE</b>	<b>24,445</b>	<b>29,200</b>	<b>31,895</b>	<b>33,003</b>	<b>30,305</b>	<b>23.97%</b>
<b>GRAND TOTAL (Academic &amp; Workforce)</b>	<b>126,933</b>	<b>147,061</b>	<b>164,267</b>	<b>160,495</b>	<b>146,911</b>	<b>15.74%</b>

<sup>1</sup> Students who enroll in more than one course are counted once for each course.

NOTE: Disciplines are listed under the current (2011-12) dean area; they may have been listed under another dean area in previous years. A "." means that the program did not offer courses that semester.

Source: Summer 4th Class Day Data (Second summer session)

**Contact Hours<sup>1</sup>  
Academic Areas  
Summer 2008 - 2012**

<b>Arts &amp; Humanities</b>	<b>Summer 2008</b>	<b>Summer 2009</b>	<b>Summer 2010</b>	<b>Summer 2011</b>	<b>Summer 2012</b>	<b>08-12 % chg</b>
Arabic	2,080	1,840	2,080	1,840	1,520	-26.92%
Art	47,328	55,152	58,608	56,496	50,016	5.68%
Chinese	.	.	1,760	1,760	1,200	.
Creative Writing	2,640	2,640	2,016	2,976	3,216	21.82%
Dance	4,064	3,008	5,008	3,984	3,968	-2.36%
Drama	5,376	3,680	11,216	11,440	8,704	61.90%
English for Speakers of Other Languages	16,000	20,160	25,664	27,840	22,144	38.40%
French	8,400	9,280	9,904	7,920	7,056	-16.00%
German	3,888	5,408	5,504	3,520	4,848	24.69%
Humanities	6,672	6,768	12,000	15,120	9,360	40.29%
Japanese	3,840	3,760	5,680	4,720	2,400	-37.50%
Latin	.	2,400	2,320	1,360	3,360	.
Philosophy	36,000	40,176	43,824	47,328	44,928	24.80%
Religion	2,304	3,456	4,128	2,496	3,024	31.25%
Spanish	103,536	114,416	128,576	111,008	96,032	-7.25%
<b>TOTAL</b>	<b>242,128</b>	<b>272,144</b>	<b>318,288</b>	<b>299,808</b>	<b>261,776</b>	<b>8.11%</b>

<b>Communications</b>	<b>Summer 2008</b>	<b>Summer 2009</b>	<b>Summer 2010</b>	<b>Summer 2011</b>	<b>Summer 2012</b>	<b>08-12 % chg</b>
English	161,136	188,448	201,888	182,160	173,184	7.48%
Journalism	3,744	3,552	3,216	4,512	5,200	38.89%
Reading - Developmental	12,496	16,944	23,792	21,136	18,368	46.99%
Speech	83,472	100,224	109,152	115,776	107,760	29.10%
Writing - Developmental	9,152	13,136	16,464	18,784	17,296	88.99%
<b>TOTAL</b>	<b>270,000</b>	<b>322,304</b>	<b>354,512</b>	<b>342,368</b>	<b>321,808</b>	<b>19.19%</b>

<sup>1</sup> Students who enroll in more than one course are counted once for each course.

NOTES: Disciplines are listed under the current (2011-12) dean area; they may have been listed under another dean area in previous years. A "." means that the program did not offer courses that semester.

Source: Summer 4th Class Day Data (Second summer session)

**Contact Hours<sup>1</sup>  
Academic Areas  
Summer 2008 - 2012**

<b>Math &amp; Sciences</b>	<b>Summer 2008</b>	<b>Summer 2009</b>	<b>Summer 2010</b>	<b>Summer 2011</b>	<b>Summer 2012</b>	<b>08-12 % chg</b>
Astronomy	5,376	5,520	9,168	7,872	6,096	13.39%
Biology	142,096	171,728	182,176	189,104	179,968	26.65%
Biotechnology	3,664	4,656	4,480	784	4,816	31.44%
Chemistry	81,024	91,584	97,152	110,208	104,736	29.27%
Engineering	448	.	2,480	2,096	1,680	275.00%
Environmental Science & Technology	2,112	2,496	2,928	3,120	3,408	61.36%
Geology	14,688	16,992	22,224	17,616	13,680	-6.86%
Mathematics	150,016	169,856	178,320	188,992	178,208	18.79%
Mathematics - Developmental	138,928	163,696	204,112	189,696	183,888	32.36%
Physics	85,920	97,248	101,568	99,072	100,896	17.43%
<b>TOTAL</b>	<b>624,272</b>	<b>723,776</b>	<b>804,608</b>	<b>808,560</b>	<b>777,376</b>	<b>24.53%</b>
<hr/>						
<b>Social &amp; Behavioral Sciences</b>	<b>Summer 2008</b>	<b>Summer 2009</b>	<b>Summer 2010</b>	<b>Summer 2011</b>	<b>Summer 2012</b>	<b>08-12 % chg</b>
Anthropology	15,984	13,968	22,176	16,320	14,112	-11.71%
Economics	89,040	101,136	112,176	99,600	90,768	1.94%
Educational Instruction	1,056	2,352	2,064	1,824	1,392	31.82%
Geographic Information Systems <sup>2</sup>	.	.	.	224	352	.
Geography	17,904	19,440	19,584	17,184	14,976	-16.35%
Government	213,168	236,448	260,448	242,720	222,576	4.41%
History	238,896	268,848	285,360	290,400	254,448	6.51%
Human Development	3,096	6,504	12,072	8,544	6,432	107.75%
Psychology	57,696	70,656	92,976	83,808	74,064	28.37%
Sociology	26,400	29,520	40,032	32,448	22,080	-16.36%
<b>TOTAL</b>	<b>663,240</b>	<b>748,872</b>	<b>846,888</b>	<b>793,072</b>	<b>701,200</b>	<b>5.72%</b>
 <b>SUBTOTAL FOR ACADEMIC</b>	 <b>1,799,640</b>	 <b>2,067,096</b>	 <b>2,324,296</b>	 <b>2,243,808</b>	 <b>2,062,160</b>	 <b>14.59%</b>

<sup>1</sup> Students who enroll in more than one course are counted once for each course.

<sup>2</sup> Geographic Information Systems began in Fall 2009; previously, enrollments were reported under Geography until Fall 2010.

NOTE: Disciplines are listed under the current (2011-12) dean area; they may have been listed under another dean area in previous years. A "." means that the program did not offer courses that semester.

Source: Summer 4th Class Day Data (Second summer session)

**Contact Hours<sup>1</sup>  
Workforce Areas  
Summer 2008 - 2012**

<b>Applied Technologies, Multimedia, &amp; Public Services</b>	<b>Summer 2008</b>	<b>Summer 2009</b>	<b>Summer 2010</b>	<b>Summer 2011</b>	<b>Summer 2012</b>	<b>08-12 % chg</b>
American Sign Lang. Interpreter Train. <sup>2</sup>	.	.	.	21,104	16,304	.
Auto Body Collision & Refinishing <sup>3</sup>	.	5,984	2,720	3,968	4,608	.
Automotive Technology & Outdoor Powered Equipment	14,176	15,840	20,192	26,240	21,664	52.82%
Building Construction Technology	14,416	14,144	15,808	15,296	11,408	-20.87%
Child Care & Development	11,168	9,616	16,864	13,120	11,360	1.72%
Commercial Music Management	10,000	10,784	12,704	12,608	13,840	38.40%
Criminal Justice	14,096	18,624	21,824	24,896	22,352	58.57%
Fire Protection Technology	1,296	1,200	2,640	1,056	2,928	125.93%
Heating, AC, & Refrigeration Technology	4,768	11,904	13,728	15,840	13,856	190.60%
Human Services	20,528	23,840	30,928	12,912	13,008	-36.63%
Jewelry	5,376	5,280	4,800	4,704	4,032	-25.00%
Music	12,904	14,264	15,808	14,680	14,480	12.21%
Paralegal	6,816	7,920	9,648	10,656	8,832	29.58%
Photographic Technology	17,728	22,224	26,640	19,088	23,120	30.42%
Radio-TV-Film	4,976	9,376	9,376	9,872	10,912	119.29%
Welding Technology	9,696	12,864	14,720	17,792	18,048	86.14%
<b>TOTAL</b>	<b>147,944</b>	<b>183,864</b>	<b>218,400</b>	<b>223,832</b>	<b>210,752</b>	<b>42.45%</b>
	<b>Summer 2008</b>	<b>Summer 2009</b>	<b>Summer 2010</b>	<b>Summer 2011</b>	<b>Summer 2012</b>	<b>08-12 % chg</b>
<b>Business Studies</b>						
Accounting	52,672	60,384	58,368	63,456	61,008	15.83%
Business & Technical Communications	3,744	5,360	7,440	6,960	10,320	175.64%
Culinary Arts	1,520	2,960	4,656	8,192	7,072	365.26%
Financial Management	3,264	3,744	4,176	2,784	1,632	-50.00%
Hospitality Management	3,328	3,280	4,304	5,264	4,304	29.33%
International Business	3,120	1,488	720	816	1,104	-64.62%
Management	19,392	19,968	22,800	22,704	23,952	23.51%
Marketing	7,152	8,784	10,944	7,200	6,048	-15.44%
Meeting & Events Planning	528	528	480	576	432	-18.18%
Office Administration	9,264	11,776	13,376	12,304	8,432	-8.98%
Real Estate	9,232	6,208	6,880	8,256	5,648	-38.82%
Travel & Tourism	.	480	720	624	624	.
<b>TOTAL</b>	<b>113,216</b>	<b>124,960</b>	<b>134,864</b>	<b>139,136</b>	<b>130,576</b>	<b>15.33%</b>

<sup>1</sup> Students who enroll in more than one course are counted once for each course.

<sup>2</sup> American Sign Language Interpreter Training began in Fall 2010.

<sup>3</sup> Auto Body Collision & Refinishing began in Fall 2008; previously, enrollments were reported under Automotive Technology until Summer 2009.

NOTE: Disciplines are listed under the current (2011-12) dean area; they may have been listed under another dean area in previous years. A "." means that the program did not offer courses that semester.

Source: Summer 4th Class Day Data (Second summer session)

## ENROLLMENT BY AREA

### Contact Hours<sup>1</sup> Workforce Areas Summer 2008 - 2012

<b>Computer Studies &amp; Advanced Technology</b>	<b>Summer 2008</b>	<b>Summer 2009</b>	<b>Summer 2010</b>	<b>Summer 2011</b>	<b>Summer 2012</b>	<b>08-12 % chg</b>
Architectural & Engineering CAD	19,200	22,080	21,216	21,120	17,664	-8.00%
Computer Information Technology	20,320	29,008	33,376	31,216	31,440	54.72%
Computer Science	40,160	47,264	50,208	45,952	43,136	7.41%
Electronics & Advanced Technology	12,912	13,552	15,760	15,648	11,008	-14.75%
Land Surveying Technology/Geomatics	.	528	480	.	432	.
Visual Communication	36,432	47,840	53,584	57,584	59,920	64.47%
<b>TOTAL</b>	<b>129,024</b>	<b>160,272</b>	<b>174,624</b>	<b>171,520</b>	<b>163,600</b>	<b>26.80%</b>
<b>Health Sciences</b>	<b>Summer 2008</b>	<b>Summer 2009</b>	<b>Summer 2010</b>	<b>Summer 2011</b>	<b>Summer 2012</b>	<b>08-12 % chg</b>
Allied Health Sciences	18,704	23,392	25,536	28,080	22,704	21.39%
Dental Hygiene	.	864	672	864	720	.
Diagnostic Medical Imaging Radiology	15,120	18,096	17,504	21,056	24,064	59.15%
Emergency Medical Services Professions	18,208	25,986	25,816	25,181	29,603	62.58%
Health & Kinesiology	41,280	53,952	56,496	59,328	51,792	25.47%
Health Information Technology	3,248	4,016	5,120	7,664	5,776	77.83%
Medical Lab Technology	7,264	9,632	13,120	20,672	18,704	157.49%
Nursing - Professional	36,864	43,520	29,072	32,016	23,120	-37.28%
Nursing - Vocational	27,552	23,824	25,216	37,120	23,552	-14.52%
Occupational Therapy Assistant	2,960	5,440	9,168	8,000	9,296	214.05%
Personal Fitness Trainer	1,120	1,120	1,344	1,568	896	-20.00%
Pharmacy Technology	5,344	5,392	8,624	8,112	8,464	58.38%
Physical Therapist Assistant	9,760	12,800	8,896	4,256	4,144	-57.54%
Sonography	9,904	11,296	12,112	12,800	11,824	19.39%
Surgical Technology	10,000	10,400	11,200	11,600	12,000	20.00%
<b>TOTAL</b>	<b>207,328</b>	<b>249,730</b>	<b>249,896</b>	<b>278,317</b>	<b>246,659</b>	<b>18.97%</b>
<b>SUBTOTAL FOR WORKFORCE</b>	<b>597,512</b>	<b>718,826</b>	<b>777,784</b>	<b>812,805</b>	<b>751,587</b>	<b>25.79%</b>
<b>GRAND TOTAL (Academic &amp; Workforce)</b>	<b>2,397,152</b>	<b>2,785,922</b>	<b>3,102,080</b>	<b>3,056,613</b>	<b>2,813,747</b>	<b>17.38%</b>

<sup>1</sup> Students who enroll in more than one course are counted once for each course.

NOTE: Disciplines are listed under the current (2011-12) dean area; they may have been listed under another dean area in previous years. A "." means that the program did not offer courses that semester.

Source: Summer 4th Class Day Data (Second summer session)

**Distance Learning<sup>1</sup> Course Enrollment and Contact Hours  
Summer 2008 - 2012**

	Summer 2008	Summer 2009	Summer 2010	Summer 2011	Summer 2012	08-12 % chg
<b>COURSE ENROLLMENT<sup>2</sup></b>						
Directed Study (DIR)	43	50	43	.	.	.
Hybrid (HYD) <sup>3</sup>	302	361	358	540	596	97.35%
Instructional Television (ITV)	683	548	569	346	300	-56.08%
Online (ONL)	8,588	9,380	10,393	11,089	10,618	23.64%
Print-Based (PRN)	315	291	353	359	317	0.63%
Unknown <sup>5</sup>	33	34	.	.	.	.
<b>TOTAL</b>	<b>9,964</b>	<b>10,664</b>	<b>11,716</b>	<b>12,334</b>	<b>11,831</b>	<b>18.74%</b>

	Summer 2008	Summer 2009	Summer 2010	Summer 2011	Summer 2012	08-12 % chg
<b>CONTACT HOURS<sup>6</sup></b>						
Directed Study (DIR)	6,080	8,256	6,272	.	.	.
Hybrid (HYD) <sup>3</sup>	14,496	17,328	18,448	26,448	30,000	106.95%
Instructional Television (ITV)	32,512	25,616	26,592	16,208	14,272	-56.10%
Online (ONL)	425,792	470,528	517,048	550,216	528,608	24.15%
Print-Based (PRN)	15,120	13,968	16,944	17,232	15,216	0.63%
Unknown <sup>5</sup>	2,608	2,720	.	.	.	.
<b>TOTAL</b>	<b>496,608</b>	<b>538,416</b>	<b>585,304</b>	<b>610,104</b>	<b>588,096</b>	<b>18.42%</b>

<sup>1</sup> Distance Learning includes non-traditional courses offered through Directed Study, Hybrid courses, Instructional Television, Online, and Print-Based courses. Prior to Fall 2006, Distance Learning also included courses offered in Interactive Video Class format.

<sup>2</sup> Students who enroll in multiple courses are counted once for each course.

<sup>3</sup> Distance Learning Hybrids (HYD) offer students the majority (51% or more) of their course work online via the Internet, with some classroom and/or laboratory meeting times.

<sup>4</sup> Prior to Summer 2008, Interactive Video Classes were classified as Distance Learning.

<sup>5</sup> Delivery method not listed.

<sup>6</sup> An instructional unit of time in which a student has contact with an instructor; includes lecture and/or laboratory time.

Source: Summer 4th Class Day Data (Second summer session)



**Student Headcount, Course Enrollment, Contact Hours, and Semester  
Credit Hours by Location  
Fall 2012**

<b>Location</b>	<b>Headcount<sup>1</sup></b>	<b>Course Enrollment<sup>2</sup></b>	<b>Contact Hours<sup>3</sup></b>	<b>Semester Credit Hours<sup>4</sup></b>
Cypress Creek Campus	5,352	10,461	579,464	31,159
Eastview Campus	3,924	7,283	492,296	20,958
Northridge Campus	9,678	19,155	1,133,040	57,504
Pinnacle Campus	2,964	5,905	318,664	17,697
Rio Grande Campus	8,005	15,818	915,600	48,639
Riverside Campus	6,684	12,948	762,256	39,090
Round Rock Campus	4,972	9,877	581,816	29,522
South Austin	3,717	6,372	352,872	19,112
Distance Learning <sup>5</sup>	9,593	14,812	762,328	43,875
Centers <sup>6</sup>	1,919	3,179	164,944	9,663
Site-Based Instruction <sup>7</sup>	3,209	4,683	269,264	14,008

<sup>1</sup> Students who attend multiple locations are counted once at each location.

<sup>2</sup> Students who enroll in multiple courses are counted once for each course.

<sup>3</sup> A contact hour is an instructional unit of time in which a student has contact with an instructor; includes lecture and/or laboratory time.

<sup>4</sup> Semester Credit Hour (SCH) is a unit of measure of instruction consisting of 60 minutes of which 50 minutes must be directed instruction.

<sup>5</sup> Distance Learning includes non-traditional courses offered through Directed Studies, Hybrid courses, Instructional Television, Online, and Print-Based courses.

<sup>6</sup> Locations, other than campuses, that are staffed, have regular posted hours, and offer credit courses on a regular basis (every semester).

<sup>7</sup> Site-based instruction includes credit classes staffed by ACC but offered at locations not owned by ACC.

**Source:** Fall 12th Class Day Data

**Course Enrollment<sup>1</sup>  
Academic Areas  
Fall 2008 - 2012**

<b>Arts &amp; Humanities</b>	<b>Fall 2008</b>	<b>Fall 2009</b>	<b>Fall 2010</b>	<b>Fall 2011</b>	<b>Fall 2012</b>	<b>08-12 % chg</b>
Arabic	38	45	44	53	35	-7.89%
Art	1,655	1,897	2,323	2,506	2,340	41.39%
Chinese	33	36	32	28	36	9.09%
Creative Writing	158	206	234	229	232	46.84%
Dance	145	161	200	214	196	35.17%
Drama	423	500	561	553	533	26.00%
English for Speakers of Other Languages	696	940	974	1,059	997	43.25%
French	311	349	350	322	303	-2.57%
German	108	110	145	114	115	6.48%
Humanities	330	427	500	684	640	93.94%
Japanese	185	210	236	221	176	-4.86%
Latin	59	85	83	74	73	23.73%
Philosophy	2,062	2,162	2,391	2,321	2,295	11.30%
Religion	70	160	129	113	119	70.00%
Russian	45	55	54	43	41	-8.89%
Spanish	2,349	2,505	2,683	2,494	2,184	-7.02%
<b>TOTAL</b>	<b>8,667</b>	<b>9,848</b>	<b>10,939</b>	<b>11,028</b>	<b>10,315</b>	<b>19.01%</b>
<b>Communications</b>	<b>Fall 2008</b>	<b>Fall 2009</b>	<b>Fall 2010</b>	<b>Fall 2011</b>	<b>Fall 2012</b>	<b>08-12 % chg</b>
English	9,965	10,967	11,802	12,045	12,142	21.85%
Journalism	219	243	276	289	290	32.42%
Reading - Developmental	1,159	1,267	1,484	1,604	1,236	6.64%
Speech	2,995	3,371	3,506	3,676	3,715	24.04%
Study Skills	71	72	104	99	107	50.70%
Writing - Developmental	704	811	966	1,083	1,090	54.83%
<b>TOTAL</b>	<b>15,113</b>	<b>16,731</b>	<b>18,138</b>	<b>18,796</b>	<b>18,580</b>	<b>22.94%</b>

<sup>1</sup> Students who enroll in multiple courses are counted once for each course.

NOTE: Disciplines are listed under the current (2012-13) dean area; they may have been included in another dean area in previous years.

Source: Fall 12th Class Day Data

**Course Enrollment<sup>1</sup>  
Academic Areas  
Fall 2008 - 2012**

<b>Math &amp; Sciences</b>	<b>Fall 2008</b>	<b>Fall 2009</b>	<b>Fall 2010</b>	<b>Fall 2011</b>	<b>Fall 2012</b>	<b>08-12 % chg</b>
Astronomy	233	305	379	408	346	48.50%
Biology	5,002	6,029	6,775	6,725	6,543	30.81%
Biotechnology	46	37	74	67	83	80.43%
Chemistry	2,741	3,175	3,953	4,079	3,754	36.96%
Engineering	105	108	162	157	161	53.33%
Environmental Science & Technology	249	266	273	236	198	-20.48%
Geology	606	680	697	621	493	-18.65%
Mathematics	6,275	7,038	7,639	7,440	7,508	19.65%
Mathematics - Developmental	7,391	8,162	9,109	8,822	8,215	11.15%
Physics	806	919	1,066	1,023	1,037	28.66%
<b>TOTAL</b>	<b>23,454</b>	<b>26,719</b>	<b>30,127</b>	<b>29,578</b>	<b>28,338</b>	<b>20.82%</b>
<b>Social &amp; Behavioral Sciences</b>	<b>Fall 2008</b>	<b>Fall 2009</b>	<b>Fall 2010</b>	<b>Fall 2011</b>	<b>Fall 2012</b>	<b>08-12 % chg</b>
Anthropology	635	956	1,058	970	797	25.51%
Economics	2,254	2,608	2,580	2,406	2,420	7.36%
Educational Instruction	208	243	321	186	180	-13.46%
Geography	649	803	872	686	636	-2.00%
Geographic Information Systems <sup>2</sup>	.	.	56	50	62	.
Government	6,416	7,399	7,663	7,361	7,180	11.91%
History	7,403	8,094	8,586	8,333	8,008	8.17%
Human Development	1,243	1,407	1,582	1,848	1,305	4.99%
Military Science	9	27	27	23	20	122.22%
Psychology	4,162	4,733	5,331	5,411	5,013	20.45%
Sociology	1,657	1,949	2,361	2,330	1,952	17.80%
<b>TOTAL</b>	<b>24,636</b>	<b>28,219</b>	<b>30,437</b>	<b>29,604</b>	<b>27,573</b>	<b>11.92%</b>
<b>SUBTOTAL FOR ACADEMIC</b>	<b>71,870</b>	<b>81,517</b>	<b>89,641</b>	<b>89,006</b>	<b>84,806</b>	<b>18.00%</b>

<sup>1</sup> Students who enroll in multiple courses are counted once for each course.

<sup>2</sup> Geographic Information Systems began in Fall 2009; previously, enrollments were reported under Geography until Fall 2010.

NOTE: Disciplines are listed under the current (2012-13) dean area; they may have been included in another dean area in previous years.  
A "." means that the program did not offer courses that semester.

Source: Fall 12th Class Day Data

**Course Enrollment<sup>1</sup>  
Workforce Areas  
Fall 2008 - 2012**

<b>Applied Technologies, Multimedia, &amp; Public Services</b>	<b>Fall 2008</b>	<b>Fall 2009</b>	<b>Fall 2010</b>	<b>Fall 2011</b>	<b>Fall 2012</b>	<b>08-12 % chg</b>
American Sign Language Interpreter Training <sup>2</sup>	.	.	517	553	526	.
Auto Body Collision & Refinishing <sup>3</sup>	.	93	113	123	108	.
Automotive Technology & Outdoor Powered Equipment	494	553	631	665	609	23.28%
Building Construction Technology	363	384	492	467	405	11.57%
Child Care & Development	459	395	479	414	366	-20.26%
Commercial Music Management	504	526	575	559	542	7.54%
Criminal Justice	699	892	1,072	1,156	1,025	46.64%
Fire Protection Technology	245	330	312	310	300	22.45%
Heating, AC, & Refrigeration Technology	202	263	271	281	288	42.57%
Human Services	695	766	438	478	451	-35.11%
Jewelry	130	113	113	131	144	10.77%
Music	750	824	897	850	871	16.13%
Paralegal	291	308	350	358	349	19.93%
Photographic Technology	453	524	579	585	504	11.26%
Radio-TV-Film	266	370	382	403	431	62.03%
Welding Technology	313	354	405	419	430	37.38%
<b>TOTAL</b>	<b>5,864</b>	<b>6,695</b>	<b>7,626</b>	<b>7,752</b>	<b>7,349</b>	<b>25.32%</b>
<b>Business Studies</b>	<b>Fall 2008</b>	<b>Fall 2009</b>	<b>Fall 2010</b>	<b>Fall 2011</b>	<b>Fall 2012</b>	<b>08-12 % chg</b>
Accounting	1,425	1,612	1,788	1,732	1,686	18.32%
Business & Technical Communications	152	192	251	363	383	151.97%
Culinary Arts	209	259	334	367	375	79.43%
Financial Management	114	147	178	144	106	-7.02%
Hospitality Management	179	206	238	239	223	24.58%
International Business	92	93	98	98	53	-42.39%
Management	1,296	1,493	1,600	1,480	1,273	-1.77%
Marketing	452	426	536	451	362	-19.91%
Meeting & Events Planning	36	41	50	36	40	11.11%
Office Administration	385	517	540	470	468	21.56%
Real Estate	369	285	330	266	285	-22.76%
Travel & Tourism	25	31	35	42	39	56.00%
<b>TOTAL</b>	<b>4,734</b>	<b>5,302</b>	<b>5,978</b>	<b>5,688</b>	<b>5,293</b>	<b>11.81%</b>

<sup>1</sup> Students who enroll in multiple courses are counted once for each course.

<sup>2</sup> American Sign Language Interpreter Training began in Fall 2010.

<sup>3</sup> Auto Body Collision & Refinishing began in Fall 2008; previously, enrollments were reported under Automotive Technology until Summer 2009.

NOTE: Disciplines are listed under the current (2012-13) dean area; they may have been included in another dean area in previous years.  
A "." means that the program did not offer courses that semester.

Source: Fall 12th Class Day Data

**Course Enrollment<sup>1</sup>  
Workforce Areas  
Fall 2008 - 2012**

<b>Computer Studies &amp; Advanced Technology</b>	<b>Fall 2008</b>	<b>Fall 2009</b>	<b>Fall 2010</b>	<b>Fall 2011</b>	<b>Fall 2012</b>	<b>08-12 % chg</b>
Architectural & Engineering CAD	498	541	539	512	489	-1.81%
Computer Information Technology	1,156	1,406	1,547	1,564	1,569	35.73%
Computer Science	1,453	1,647	1,750	1,699	1,632	12.32%
Electronics & Advanced Technology	297	371	393	400	360	21.21%
Land Surveying Technology/Geomatics	31	40	16	41	32	3.23%
Visual Communication	1,226	1,383	1,532	1,501	1,497	22.10%
<b>TOTAL</b>	<b>4,661</b>	<b>5,388</b>	<b>5,777</b>	<b>5,717</b>	<b>5,579</b>	<b>19.70%</b>
<b>Health Sciences</b>	<b>Fall 2008</b>	<b>Fall 2009</b>	<b>Fall 2010</b>	<b>Fall 2011</b>	<b>Fall 2012</b>	<b>08-12 % chg</b>
Allied Health Sciences	927	1,025	1,287	1,232	1,136	22.55%
Dental Hygiene	156	143	129	144	127	-18.59%
Diagnostic Medical Imaging Radiology	254	302	308	340	349	37.40%
Emergency Medical Services Professions	292	325	349	388	387	32.53%
Health & Kinesiology	2,122	2,493	2,676	2,696	2,184	2.92%
Health Information Technology	63	119	136	174	170	169.84%
Medical Lab Technology	89	115	151	194	179	101.12%
Nursing - Professional	1,840	2,070	2,300	2,164	1,792	-2.61%
Nursing - Vocational	339	423	355	446	409	20.65%
Occupational Therapy Assistant	80	114	103	120	108	35.00%
Personal Fitness Trainer	33	39	46	51	44	33.33%
Pharmacy Technology	110	145	150	143	160	45.45%
Physical Therapist Assistant	82	131	121	119	128	56.10%
Sonography	185	195	184	206	175	-5.41%
Surgical Technology	84	88	118	118	118	40.48%
<b>TOTAL</b>	<b>6,656</b>	<b>7,727</b>	<b>8,413</b>	<b>8,535</b>	<b>7,466</b>	<b>12.17%</b>
<b>SUBTOTAL FOR WORKFORCE</b>	<b>21,915</b>	<b>25,112</b>	<b>27,794</b>	<b>27,692</b>	<b>25,687</b>	<b>17.21%</b>
<b>GRAND TOTAL (Academic &amp; Workforce)</b>	<b>93,785</b>	<b>106,629</b>	<b>117,435</b>	<b>116,698</b>	<b>110,493</b>	<b>17.82%</b>

<sup>1</sup> Students who enroll in multiple courses are counted once for each course.

NOTE: Disciplines are listed under the current (2012-13) dean area; they may have been included in another dean area in previous years.

Source: Fall 12th Class Day Data

**Semester Credit Hours<sup>1</sup>**  
**Academic Areas**  
**Fall 2008 - 2012**

<b>Arts &amp; Humanities</b>	<b>Fall 2008</b>	<b>Fall 2009</b>	<b>Fall 2010</b>	<b>Fall 2011</b>	<b>Fall 2012</b>	<b>08-12 % chg</b>
Arabic	162	185	184	245	153	-5.56%
Art	4,965	5,691	6,969	7,518	7,020	41.39%
Chinese	141	154	138	128	158	12.06%
Creative Writing	474	618	702	687	696	46.84%
Dance	255	271	357	399	379	48.63%
Drama	1,259	1,480	1,667	1,641	1,583	25.73%
English for Speakers of Other Languages	2,088	2,820	2,922	3,177	2,991	43.25%
French	1,457	1,593	1,582	1,488	1,417	-2.75%
German	524	522	685	548	543	3.63%
Humanities	990	1,281	1,500	2,052	1,920	93.94%
Japanese	831	962	1,074	1,023	808	-2.77%
Latin	295	397	391	356	333	12.88%
Philosophy	6,186	6,486	7,173	6,963	6,885	11.30%
Religion	210	480	387	339	357	70.00%
Russian	209	257	246	205	205	-1.91%
Spanish	10,937	11,633	12,529	11,684	10,162	-7.09%
<b>TOTAL</b>	<b>30,983</b>	<b>34,830</b>	<b>38,506</b>	<b>38,453</b>	<b>35,610</b>	<b>14.93%</b>
<b>Communications</b>	<b>Fall 2008</b>	<b>Fall 2009</b>	<b>Fall 2010</b>	<b>Fall 2011</b>	<b>Fall 2012</b>	<b>08-12 % chg</b>
English	29,895	32,901	35,406	36,135	36,426	21.85%
Journalism	657	729	828	867	870	32.42%
Reading - Developmental	3,477	3,801	4,452	4,812	3,708	6.64%
Speech	8,985	10,113	10,518	11,028	11,145	24.04%
Study Skills	197	203	274	268	295	49.75%
Writing - Developmental	2,054	2,373	2,802	3,025	2,990	45.57%
<b>TOTAL</b>	<b>45,265</b>	<b>50,120</b>	<b>54,280</b>	<b>56,135</b>	<b>55,434</b>	<b>22.47%</b>

<sup>1</sup> Students who enroll in multiple courses are counted once for each course.

NOTE: Disciplines are listed under the current (2012-13) dean area; they may have been included in another dean area in previous years.

Source: Fall 12th Class Day Data

**Semester Credit Hours<sup>1</sup>**  
**Academic Areas**  
**Fall 2008 - 2012**

<b>Math &amp; Sciences</b>	<b>Fall 2008</b>	<b>Fall 2009</b>	<b>Fall 2010</b>	<b>Fall 2011</b>	<b>Fall 2012</b>	<b>08-12 % chg</b>
Astronomy	716	961	1,197	1,304	1,117	56.01%
Biology	15,451	18,316	20,389	20,444	19,884	28.69%
Biotechnology	129	104	242	209	257	99.22%
Chemistry	5,497	6,351	7,925	8,173	7,518	36.77%
Engineering	265	271	398	372	394	48.68%
Environmental Science & Technology	753	814	827	737	600	-20.32%
Geology	2,105	2,380	2,440	2,200	1,745	-17.10%
Mathematics	20,374	22,840	24,722	24,128	24,359	19.56%
Mathematics - Developmental	21,706	23,818	26,485	25,710	23,972	10.44%
Physics	3,209	3,655	4,246	4,092	4,148	29.26%
<b>TOTAL</b>	<b>70,205</b>	<b>79,510</b>	<b>88,871</b>	<b>87,369</b>	<b>83,994</b>	<b>19.64%</b>
<b>Social &amp; Behavioral Sciences</b>	<b>Fall 2008</b>	<b>Fall 2009</b>	<b>Fall 2010</b>	<b>Fall 2011</b>	<b>Fall 2012</b>	<b>08-12 % chg</b>
Anthropology	1,905	2,868	3,174	2,910	2,391	25.51%
Economics	6,762	7,824	7,740	7,218	7,260	7.36%
Educational Instruction	624	729	963	558	540	-13.46%
Geography	2,019	2,469	2,665	2,125	1,985	-1.68%
Geographic Information Systems <sup>2</sup>	.	.	175	175	219	.
Government	19,248	22,197	22,989	22,083	21,540	11.91%
History	22,209	24,282	25,758	24,999	24,024	8.17%
Human Development	1,919	2,243	2,614	3,018	2,243	16.88%
Military Science	18	54	54	46	40	122.22%
Psychology	12,486	14,199	15,993	16,233	15,039	20.45%
Sociology	4,971	5,847	7,083	6,990	5,856	17.80%
<b>TOTAL</b>	<b>72,161</b>	<b>82,712</b>	<b>89,208</b>	<b>86,355</b>	<b>81,137</b>	<b>12.44%</b>
<b>SUBTOTAL FOR ACADEMIC</b>	<b>218,614</b>	<b>247,172</b>	<b>270,865</b>	<b>268,312</b>	<b>256,175</b>	<b>17.18%</b>

<sup>1</sup> Students who enroll in multiple courses are counted once for each course.

<sup>2</sup> Geographic Information Systems began in Fall 2009; previously, enrollments were reported under Geography until Fall 2010.

NOTE: Disciplines are listed under the current (2012-13) dean area; they may have been included in another dean area in previous years.  
 A "." means that the program did not offer courses that semester.

Source: Fall 12th Class Day Data

**Semester Credit Hours<sup>1</sup>  
Workforce Areas  
Fall 2008 - 2012**

<b>Applied Technologies, Multimedia, &amp; Public Services</b>	<b>Fall 2008</b>	<b>Fall 2009</b>	<b>Fall 2010</b>	<b>Fall 2011</b>	<b>Fall 2012</b>	<b>08-12 % chg</b>
American Sign Language Interpreter Training <sup>2</sup>	.	.	1,889	2,038	1,881	.
Auto Body Collision & Refinishing <sup>3</sup>	.	318	385	438	370	.
Automotive Technology & Outdoor Powered Equipment	1,957	2,212	2,524	2,660	2,426	23.97%
Building Construction Technology	1,339	1,414	1,780	1,693	1,497	11.80%
Child Care & Development	1,495	1,303	1,567	1,365	1,208	-19.20%
Commercial Music Management	1,504	1,546	1,697	1,670	1,643	9.24%
Criminal Justice	2,120	2,735	3,261	3,518	3,133	47.78%
Fire Protection Technology	855	1,155	1,082	1,070	1,041	21.75%
Heating, AC, & Refrigeration Technology	788	1,028	1,056	1,096	1,126	42.89%
Human Services	2,349	2,566	1,336	1,451	1,388	-40.91%
Jewelry	520	452	452	524	576	10.77%
Music	1,640	1,813	1,915	1,934	2,048	24.88%
Paralegal	873	924	1,050	1,074	1,047	19.93%
Photographic Technology	1,410	1,642	1,788	1,785	1,516	7.52%
Radio-TV-Film	798	1,110	1,146	1,209	1,293	62.03%
Welding Technology	1,252	1,416	1,620	1,676	1,720	37.38%
<b>TOTAL</b>	<b>18,900</b>	<b>21,634</b>	<b>24,548</b>	<b>25,201</b>	<b>23,913</b>	<b>26.52%</b>
<b>Business Studies</b>	<b>Fall 2008</b>	<b>Fall 2009</b>	<b>Fall 2010</b>	<b>Fall 2011</b>	<b>Fall 2012</b>	<b>08-12 % chg</b>
Accounting	4,359	4,926	5,446	5,272	5,131	17.71%
Business & Technical Communications	456	584	771	1,114	1,182	159.21%
Culinary Arts	564	691	890	1,010	1,038	84.04%
Financial Management	342	441	534	432	304	-11.11%
Hospitality Management	537	618	714	717	669	24.58%
International Business	276	279	294	294	159	-42.39%
Management	3,888	4,479	4,800	4,440	3,819	-1.77%
Marketing	1,356	1,278	1,608	1,353	1,086	-19.91%
Meeting & Events Planning	108	123	150	108	120	11.11%
Office Administration	957	1,260	1,375	1,214	1,192	24.56%
Real Estate	1,120	937	1,086	869	767	-31.52%
Travel & Tourism	75	93	105	126	117	56.00%
<b>TOTAL</b>	<b>14,038</b>	<b>15,709</b>	<b>17,773</b>	<b>16,949</b>	<b>15,584</b>	<b>11.01%</b>

<sup>1</sup> Students who enroll in multiple courses are counted once for each course.

<sup>2</sup> American Sign Language Interpreter Training began in Fall 2010.

<sup>3</sup> Auto Body Collision & Refinishing began in Fall 2008; previously, enrollments were reported under Automotive Technology until Summer 2009.

NOTE: Disciplines are listed under the current (2012-13) dean area; they may have been included in another dean area in previous years.  
A "." means that the program did not offer courses that semester.

Source: Fall 12th Class Day Data



**Semester Credit Hours<sup>1</sup>  
Workforce Areas  
Fall 2008 - 2012**

<b>Computer Studies &amp; Advanced Technology</b>	<b>Fall 2008</b>	<b>Fall 2009</b>	<b>Fall 2010</b>	<b>Fall 2011</b>	<b>Fall 2012</b>	<b>08-12 % chg</b>
Architectural & Engineering CAD	1,992	2,164	2,156	2,048	1,956	-1.81%
Computer Information Technology	3,670	4,465	4,893	4,947	4,933	34.41%
Computer Science	4,413	5,018	5,332	5,181	4,984	12.94%
Electronics & Advanced Technology	1,077	1,321	1,404	1,421	1,303	20.98%
Land Surveying Technology/Geomatics	93	123	53	124	96	3.23%
Visual Communication	4,617	5,203	5,648	5,521	5,511	19.36%
<b>TOTAL</b>	<b>15,862</b>	<b>18,294</b>	<b>19,486</b>	<b>19,242</b>	<b>18,783</b>	<b>18.42%</b>
<b>Health Sciences</b>	<b>Fall 2008</b>	<b>Fall 2009</b>	<b>Fall 2010</b>	<b>Fall 2011</b>	<b>Fall 2012</b>	<b>08-12 % chg</b>
Allied Health Sciences	2,249	2,485	3,082	2,965	2,739	21.79%
Dental Hygiene	399	376	340	378	335	-16.04%
Diagnostic Medical Imaging Radiology	730	855	888	978	1,004	37.53%
Emergency Medical Services Professions	780	866	912	1,015	1,022	31.03%
Health & Kinesiology	2,811	3,319	3,560	3,537	2,938	4.52%
Health Information Technology	176	350	384	470	456	159.09%
Medical Lab Technology	219	291	393	516	481	119.63%
Nursing - Professional	4,304	4,673	5,116	5,045	4,373	1.60%
Nursing - Vocational	993	1,249	1,052	1,382	1,196	20.44%
Occupational Therapy Assistant	240	323	297	340	310	29.17%
Personal Fitness Trainer	112	132	152	169	146	30.36%
Pharmacy Technology	309	399	415	394	444	43.69%
Physical Therapist Assistant	310	444	434	420	451	45.48%
Sonography	503	525	500	554	479	-4.77%
Surgical Technology	300	312	398	398	398	32.67%
<b>TOTAL</b>	<b>14,435</b>	<b>16,599</b>	<b>17,923</b>	<b>18,561</b>	<b>16,772</b>	<b>16.19%</b>
<b>SUBTOTAL FOR WORKFORCE</b>	<b>63,235</b>	<b>72,236</b>	<b>79,730</b>	<b>79,953</b>	<b>75,052</b>	<b>18.69%</b>
<b>GRAND TOTAL (Academic &amp; Workforce)</b>	<b>281,849</b>	<b>319,408</b>	<b>350,595</b>	<b>348,265</b>	<b>331,227</b>	<b>17.52%</b>

<sup>1</sup> Students who enroll in multiple courses are counted once for each course.

NOTE: Disciplines are listed under the current (2012-13) dean area; they may have been included in another dean area in previous years.

Source: Fall 12th Class Day Data

**Contact Hours<sup>1</sup>  
Academic Areas  
Fall 2008 - 2012**

<b>Arts &amp; Humanities</b>	<b>Fall 2008</b>	<b>Fall 2009</b>	<b>Fall 2010</b>	<b>Fall 2011</b>	<b>Fall 2012</b>	<b>08-12 % chg</b>
Arabic	2,592	2,960	2,944	3,920	2,448	-5.56%
Art	113,088	125,280	149,568	161,232	145,776	28.90%
Chinese	2,256	2,464	2,208	2,048	2,528	12.06%
Creative Writing	7,584	9,888	11,232	10,992	11,136	46.84%
Dance	9,264	10,160	12,320	12,992	11,936	28.84%
Drama	24,208	29,152	33,072	31,296	29,824	23.20%
English for Speakers of Other	44,544	60,352	62,480	67,968	64,016	43.71%
French	23,312	25,488	25,312	23,808	22,672	-2.75%
German	8,384	8,352	10,960	8,768	8,688	3.63%
Humanities	15,840	20,496	24,000	32,832	30,720	93.94%
Japanese	13,296	15,392	17,184	16,368	12,928	-2.77%
Latin	4,720	6,352	6,256	5,696	5,328	12.88%
Philosophy	98,976	103,776	114,768	111,408	110,160	11.30%
Religion	3,360	7,680	6,192	5,424	5,712	70.00%
Russian	3,344	4,112	3,936	3,280	3,280	-1.91%
Spanish	175,120	186,256	200,640	186,944	162,592	-7.15%
<b>TOTAL</b>	<b>549,888</b>	<b>618,160</b>	<b>683,072</b>	<b>684,976</b>	<b>629,744</b>	<b>14.52%</b>

<b>Communications</b>	<b>Fall 2008</b>	<b>Fall 2009</b>	<b>Fall 2010</b>	<b>Fall 2011</b>	<b>Fall 2012</b>	<b>08-12 % chg</b>
English	478,320	526,416	566,496	578,160	582,816	21.85%
Journalism	10,704	12,064	13,664	14,496	14,544	35.87%
Reading - Developmental	63,600	70,544	82,704	89,264	67,712	6.47%
Speech	143,760	161,808	168,288	176,448	178,320	24.04%
Study Skills	3,152	3,248	4,384	4,288	4,720	49.75%
Writing - Developmental	39,312	45,088	53,264	56,528	55,584	41.39%
<b>TOTAL</b>	<b>738,848</b>	<b>819,168</b>	<b>888,800</b>	<b>919,184</b>	<b>903,696</b>	<b>22.31%</b>

<sup>1</sup> Students who enroll in multiple courses are counted once for each course.

NOTE: Disciplines are listed under the current (2012-13) dean area; they may have been included in another dean area in previous years.

Source: Fall 12th Class Day Data

## ENROLLMENT BY AREA

### Contact Hours<sup>1</sup> Academic Areas Fall 2008 - 2012

<b>Math &amp; Sciences</b>	<b>Fall 2008</b>	<b>Fall 2009</b>	<b>Fall 2010</b>	<b>Fall 2011</b>	<b>Fall 2012</b>	<b>08-12 % chg</b>
Astronomy	12,000	16,848	21,072	23,424	20,400	70.00%
Biology	342,880	402,048	450,512	448,816	436,672	27.35%
Biotechnology	3,760	3,056	7,488	5,360	6,960	85.11%
Chemistry	131,568	152,400	189,744	195,792	180,192	36.96%
Engineering	4,240	4,336	6,368	5,952	6,304	48.68%
Environmental Science & Technology	12,240	13,536	13,488	13,200	9,792	-20.00%
Geology	42,864	48,960	50,208	45,984	36,432	-15.01%
Mathematics	326,032	365,552	395,808	386,208	389,920	19.60%
Mathematics - Developmental	464,928	510,160	565,120	546,784	509,776	9.65%
Physics	76,656	87,216	101,472	98,208	99,552	29.87%
<b>TOTAL</b>	<b>1,417,168</b>	<b>1,604,112</b>	<b>1,801,280</b>	<b>1,769,728</b>	<b>1,696,000</b>	<b>19.68%</b>
<b>Social &amp; Behavioral Sciences</b>	<b>Fall 2008</b>	<b>Fall 2009</b>	<b>Fall 2010</b>	<b>Fall 2011</b>	<b>Fall 2012</b>	<b>08-12 % chg</b>
Anthropology	30,480	45,888	50,784	46,704	38,640	26.77%
Economics	108,192	125,184	123,840	115,488	116,160	7.36%
Educational Instruction	9,984	11,664	15,408	8,928	8,640	-13.46%
Geography	34,608	41,552	44,208	36,144	34,224	-1.11%
Geographic Information Systems <sup>2</sup>	.	.	4,240	4,144	5,488	.
Government	307,968	355,792	368,784	354,288	345,536	12.20%
History	355,344	388,512	412,128	399,984	384,384	8.17%
Human Development	37,944	43,800	50,352	58,392	42,576	12.21%
Military Science	432	1,296	1,296	1,104	960	122.22%
Psychology	199,776	227,328	255,936	259,728	240,624	20.45%
Sociology	79,536	93,552	113,424	111,840	93,696	17.80%
<b>TOTAL</b>	<b>1,164,264</b>	<b>1,334,568</b>	<b>1,440,400</b>	<b>1,396,744</b>	<b>1,310,928</b>	<b>12.60%</b>
 <b>SUBTOTAL FOR ACADEMIC</b>	 <b>3,870,168</b>	 <b>4,376,008</b>	 <b>4,813,552</b>	 <b>4,770,632</b>	 <b>4,540,368</b>	 <b>17.32%</b>

<sup>1</sup> Students who enroll in multiple courses are counted once for each course.

<sup>2</sup> Geographic Information Systems began in Fall 2009; previously, enrollments were reported under Geography until Fall 2010.

NOTE: Disciplines are listed under the current (2012-13) dean area; they may have been included in another dean area in previous years.  
A "." means that the program did not offer courses that semester.

Source: Fall 12th Class Day Data

**Contact Hours<sup>1</sup>  
Workforce Areas  
Fall 2008 - 2012**

<b>Applied Technologies, Multimedia, &amp; Public Services</b>	<b>Fall 2008</b>	<b>Fall 2009</b>	<b>Fall 2010</b>	<b>Fall 2011</b>	<b>Fall 2012</b>	<b>08-12 % chg</b>
American Sign Language Interpreter Training <sup>2</sup>	.	.	46,736	50,368	46,752	.
Auto Body Collision & Refinishing <sup>3</sup>	.	7,840	9,344	11,424	9,792	.
Automotive Technology & Outdoor Powered Equipment	49,664	55,872	62,560	66,432	60,224	21.26%
Building Construction Technology	31,584	32,720	40,320	38,624	33,312	5.47%
Child Care & Development	33,232	29,376	36,720	30,480	26,720	-19.60%
Commercial Music Management	31,888	33,664	36,416	36,048	35,760	12.14%
Criminal Justice	35,072	45,488	54,672	57,696	53,520	52.60%
Fire Protection Technology	18,432	24,816	22,896	22,496	22,096	19.88%
Heating, AC, & Refrigeration Technology	19,712	25,632	26,464	27,424	28,064	42.37%
Human Services	50,448	55,648	24,192	25,392	26,992	-46.50%
Jewelry	12,480	10,848	10,848	12,576	13,824	10.77%
Music	33,248	37,704	40,968	38,608	39,560	18.98%
Paralegal	15,888	17,184	19,440	21,024	19,632	23.56%
Photographic Technology	55,824	63,472	71,296	72,848	62,864	12.61%
Radio-TV-Film	16,832	23,808	24,464	26,432	27,344	62.45%
Welding Technology	30,048	33,984	38,880	40,352	41,408	37.81%
<b>TOTAL</b>	<b>434,352</b>	<b>498,056</b>	<b>566,216</b>	<b>578,224</b>	<b>547,864</b>	<b>26.13%</b>

<b>Business Studies</b>	<b>Fall 2008</b>	<b>Fall 2009</b>	<b>Fall 2010</b>	<b>Fall 2011</b>	<b>Fall 2012</b>	<b>08-12 % chg</b>
Accounting	89,360	98,864	110,656	107,744	104,448	16.88%
Business & Technical Communications	7,296	9,632	12,336	18,400	18,912	159.21%
Culinary Arts	13,504	16,720	21,488	25,312	26,432	95.73%
Financial Management	5,472	7,056	8,544	6,912	4,864	-11.11%
Hospitality Management	10,224	11,696	14,768	13,952	13,344	30.52%
International Business	5,280	4,464	4,704	4,704	2,544	-51.82%
Management	62,688	73,104	77,760	71,520	61,584	-1.76%
Marketing	21,696	20,448	25,728	21,648	17,376	-19.91%
Meeting & Events Planning	1,728	1,968	2,400	1,728	1,920	11.11%
Office Administration	22,704	30,288	32,272	28,656	28,544	25.72%
Real Estate	17,920	14,992	17,376	13,904	12,272	-31.52%
Travel & Tourism	1,200	1,632	1,792	2,240	2,048	70.67%
<b>TOTAL</b>	<b>259,072</b>	<b>290,864</b>	<b>329,824</b>	<b>316,720</b>	<b>294,288</b>	<b>13.59%</b>

<sup>1</sup> Students who enroll in multiple courses are counted once for each course.

<sup>2</sup> American Sign Language Interpreter Training began in Fall 2010.

<sup>3</sup> Auto Body Collision & Refinishing began in Fall 2008; previously, enrollments were reported under Automotive Technology until Summer 2009.

NOTE: Disciplines are listed under the current (2012-13) dean area; they may have been included in another dean area in previous years.  
A "." means that the program did not offer courses that semester.

Source: Fall 12th Class Day Data

## ENROLLMENT BY AREA

### Contact Hours<sup>1</sup> Workforce Areas Fall 2008 - 2012

<b>Computer Studies &amp; Advanced Technology</b>	<b>Fall 2008</b>	<b>Fall 2009</b>	<b>Fall 2010</b>	<b>Fall 2011</b>	<b>Fall 2012</b>	<b>08-12 % chg</b>
Architectural & Engineering CAD	47,808	51,936	51,744	49,152	46,944	-1.81%
Computer Information Technology	84,512	101,632	110,912	113,440	112,512	33.13%
Computer Science	94,720	107,872	114,624	111,424	107,264	13.24%
Electronics & Advanced Technology	26,880	32,096	34,240	34,912	31,792	18.27%
Land Surveying Technology/Geomatics	1,488	3,120	1,808	2,656	1,776	19.35%
Visual Communication	114,016	128,608	141,840	138,816	136,816	20.00%
<b>TOTAL</b>	<b>369,424</b>	<b>425,264</b>	<b>455,168</b>	<b>450,400</b>	<b>437,104</b>	<b>18.32%</b>
<b>Health Sciences</b>	<b>Fall 2008</b>	<b>Fall 2009</b>	<b>Fall 2010</b>	<b>Fall 2011</b>	<b>Fall 2012</b>	<b>08-12 % chg</b>
Allied Health Sciences	35,984	39,760	49,312	47,440	43,824	21.79%
Dental Hygiene	13,584	13,344	12,256	13,536	12,096	-10.95%
Diagnostic Medical Imaging Radiology	21,024	27,568	26,048	31,968	32,208	53.20%
Emergency Medical Services Professions	27,552	30,338	30,691	35,708	34,344	24.65%
Health & Kinesiology	101,856	119,664	128,448	129,408	104,832	2.92%
Health Information Technology	4,064	6,864	7,392	10,784	8,960	120.47%
Medical Lab Technology	8,720	11,952	16,640	21,760	20,096	130.46%
Nursing - Professional	150,768	161,872	175,712	174,368	150,640	-0.08%
Nursing - Vocational	30,912	37,936	32,208	44,320	35,904	16.15%
Occupational Therapy Assistant	7,520	10,640	9,632	11,200	10,096	34.26%
Personal Fitness Trainer	2,208	2,592	2,880	3,216	2,784	26.09%
Pharmacy Technology	7,824	10,352	10,224	9,344	10,208	30.47%
Physical Therapist Assistant	12,768	14,800	13,520	13,392	14,528	13.78%
Sonography	18,256	19,152	19,552	20,768	19,168	5.00%
Surgical Technology	10,320	10,688	13,232	13,232	13,232	28.22%
<b>TOTAL</b>	<b>453,360</b>	<b>517,522</b>	<b>547,747</b>	<b>580,444</b>	<b>512,920</b>	<b>13.14%</b>
<b>SUBTOTAL FOR WORKFORCE</b>	<b>1,516,208</b>	<b>1,731,706</b>	<b>1,898,955</b>	<b>1,925,788</b>	<b>1,792,176</b>	<b>18.20%</b>
<b>GRAND TOTAL (Academic &amp; Workforce)</b>	<b>5,386,376</b>	<b>6,107,714</b>	<b>6,712,507</b>	<b>6,696,420</b>	<b>6,332,544</b>	<b>17.57%</b>

<sup>1</sup> Students who enroll in multiple courses are counted once for each course.

NOTE: Disciplines are listed under the current (2012-13) dean area; they may have been included in another dean area in previous years.

Source: Fall 12th Class Day Data

**Distance Learning<sup>1</sup> Course Enrollment and Contact Hours  
Fall 2008 - 2012**

	Fall 2008	Fall 2009	Fall 2010	Fall 2011	Fall 2012	08-12 % chg
<b>COURSE ENROLLMENT<sup>2</sup></b>						
Directed Study (DIR)	208	216	237	208	163	-21.63%
Hybrid (HYD) <sup>3</sup>	324	423	931	1,066	1,366	321.60%
Instructional Television (ITV)	947	804	719	445	222	-76.56%
Online (ONL)	9,668	11,447	12,096	12,897	12,783	32.22%
Print-Based (PRN)	362	336	386	378	278	-23.20%
<b>TOTAL</b>	<b>11,509</b>	<b>13,226</b>	<b>14,369</b>	<b>14,994</b>	<b>14,812</b>	<b>28.70%</b>

	Fall 2008	Fall 2009	Fall 2010	Fall 2011	Fall 2012	08-12 % chg
<b>CONTACT HOURS<sup>4</sup></b>						
Directed Study (DIR)	20,560	19,552	21,312	20,912	18,496	-10.04%
Hybrid (HYD) <sup>3</sup>	15,552	19,776	48,368	55,280	71,104	357.20%
Instructional Television (ITV)	45,680	38,528	35,152	20,640	10,656	-76.67%
Online (ONL)	501,536	589,152	618,200	660,584	648,728	29.35%
Print-Based (PRN)	17,376	16,128	18,528	18,144	13,344	-23.20%
<b>TOTAL</b>	<b>600,704</b>	<b>683,136</b>	<b>741,560</b>	<b>775,560</b>	<b>762,328</b>	<b>26.91%</b>

<sup>1</sup> Distance Learning includes non-traditional courses offered through Directed Study, Hybrid courses, Instructional Television, Online, and Print-Based courses.  
<sup>2</sup> Students who enroll in multiple courses are counted once for each course.  
<sup>3</sup> Distance Learning Hybrids (HYD), began in Fall 2008, offer students the majority (51% or more) of their course work online via the Internet, with some classroom and/or laboratory meeting times.  
<sup>4</sup> A contact hour is an instructional unit of time in which a student has contact with an instructor; includes lecture and/or laboratory time.

Source: Fall 12th Class Day Data

**Student Headcount, Course Enrollment, Contact Hours, and Semester  
Credit Hours by Location  
Spring 2013**

<b>Location</b>	<b>Headcount<sup>1</sup></b>	<b>Course Enrollment<sup>2</sup></b>	<b>Contact Hours<sup>3</sup></b>	<b>Semester Credit Hours<sup>4</sup></b>
Cypress Creek Campus	4,861	9,203	512,168	27,158
Eastview Campus	3,626	6,789	486,734	19,338
Northridge Campus	9,124	17,821	1,069,744	53,736
Pinnacle Campus	2,724	5,144	282,224	15,420
Rio Grande Campus	7,691	14,650	859,464	45,394
Riverside Campus	6,438	12,137	720,384	36,794
Round Rock Campus	4,554	9,070	560,632	27,141
South Austin	3,295	5,328	299,032	16,281
Distance Learning <sup>5</sup>	9,358	14,504	742,896	43,548
Centers <sup>6</sup>	1,727	2,758	145,296	8,415
Site-Based Instruction <sup>7</sup>	3,411	4,975	292,864	14,889

<sup>1</sup> Students who attend multiple locations are counted once at each location.

<sup>2</sup> Students who enroll in multiple courses are counted once for each course.

<sup>3</sup> A contact hour is an instructional unit of time in which a student has contact with an instructor; includes lecture and/or laboratory time.

<sup>4</sup> Semester Credit Hour (SCH) is a unit of measure of instruction consisting of 60 minutes of which 50 minutes must be directed instruction.

<sup>5</sup> Distance Learning includes non-traditional courses offered through Directed Studies, Hybrid courses, Instructional Television, Online, and Print-Based courses.

<sup>6</sup> Locations, other than campuses, that are staffed, have regular posted hours, and offer credit courses on a regular basis (every semester).

<sup>7</sup> Site-based instruction includes credit classes staffed by ACC but offered at locations not owned by ACC.

**Source:** Spring 12th Class Day Data

**Course Enrollment<sup>1</sup>  
Academic Areas  
Spring 2009 - 2013**

<b>Arts &amp; Humanities</b>	<b>Spring 2009</b>	<b>Spring 2010</b>	<b>Spring 2011</b>	<b>Spring 2012</b>	<b>Spring 2013</b>	<b>09-13 % chg</b>
Arabic	33	30	37	30	31	-6.06%
Art	1,974	2,142	2,458	2,369	2,309	16.97%
Chinese	25	30	20	26	30	20.00%
Creative Writing	228	236	249	247	218	-4.39%
Dance	132	205	206	228	179	35.61%
Drama	441	492	623	568	481	9.07%
English for Speakers of Other Languages	748	909	1,078	1,143	836	11.76%
French	323	379	359	355	301	-6.81%
German	118	136	137	123	122	3.39%
Humanities	313	479	675	669	609	94.57%
Japanese	204	210	184	198	192	-5.88%
Latin	16	30	33	58	54	237.50%
Philosophy	2,275	2,375	2,687	2,495	2,329	2.37%
Religion	105	148	111	140	56	-46.67%
Russian	27	32	19	23	45	66.67%
Spanish	2,409	2,559	2,774	2,437	2,192	-9.01%
<b>TOTAL</b>	<b>9,371</b>	<b>10,392</b>	<b>11,650</b>	<b>11,109</b>	<b>9,984</b>	<b>6.54%</b>
<b>Communications</b>	<b>Spring 2009</b>	<b>Spring 2010</b>	<b>Spring 2011</b>	<b>Spring 2012</b>	<b>Spring 2013</b>	<b>09-13 % chg</b>
English	9,145	10,232	10,876	10,391	10,260	12.19%
Journalism	276	297	296	277	268	-2.90%
Reading - Developmental	940	1,148	1,324	1,303	783	-16.70%
Speech	2,865	3,281	3,508	3,462	3,625	26.53%
Study Skills	55	69	81	109	68	23.64%
Writing - Developmental	742	852	1,178	1,187	1,009	35.98%
<b>TOTAL</b>	<b>14,023</b>	<b>15,879</b>	<b>17,263</b>	<b>16,729</b>	<b>16,013</b>	<b>14.19%</b>

<sup>1</sup> Students who enroll in multiple courses are counted once for each course.

NOTE: Disciplines are listed under the current (2012-13) dean area; they may have been listed under another dean area in previous years. A "." means that the program did not offer courses that semester.

Source: Spring 12th Class Day Data



**Course Enrollment<sup>1</sup>  
Academic Areas  
Spring 2009 - 2013**

<b>Math &amp; Sciences</b>	<b>Spring 2009</b>	<b>Spring 2010</b>	<b>Spring 2011</b>	<b>Spring 2012</b>	<b>Spring 2013</b>	<b>09-13 % chg</b>
Astronomy	328	387	458	406	389	18.60%
Biology	4,783	5,658	6,767	6,366	6,025	25.97%
Biotechnology	101	62	75	77	72	-28.71%
Chemistry	3,133	3,743	4,297	4,218	3,551	13.34%
Engineering	74	112	130	157	177	139.19%
Environmental Science & Technology	295	318	318	247	222	-24.75%
Geology	614	739	711	624	460	-25.08%
Mathematics	5,970	6,565	7,305	7,060	6,505	8.96%
Mathematics - Developmental	6,876	8,043	8,737	8,577	7,069	2.81%
Physics	969	1,077	1,209	1,045	1,058	9.18%
<b>TOTAL</b>	<b>23,143</b>	<b>26,704</b>	<b>30,007</b>	<b>28,777</b>	<b>25,528</b>	<b>10.31%</b>
	<b>Spring 2009</b>	<b>Spring 2010</b>	<b>Spring 2011</b>	<b>Spring 2012</b>	<b>Spring 2013</b>	<b>09-13 % chg</b>
<b>Social &amp; Behavioral Sciences</b>						
Anthropology	764	974	1,051	768	840	9.95%
Economics	2,460	2,755	2,563	2,197	2,108	-14.31%
Educational Instruction	195	262	242	209	187	-4.10%
Geography	657	863	842	671	587	-10.65%
Geographic Information Systems <sup>2</sup>	.	.	47	60	72	.
Government	6,154	6,853	6,987	6,582	6,707	8.99%
History	7,063	7,819	8,166	7,717	6,898	-2.34%
Human Development	884	1,171	1,268	1,466	829	-6.22%
Military Science	9	30	27	17	9	0.00%
Psychology	4,215	4,524	5,053	5,080	4,501	6.79%
Sociology	1,771	2,275	2,538	2,110	1,914	8.07%
<b>TOTAL</b>	<b>24,172</b>	<b>27,526</b>	<b>28,784</b>	<b>26,877</b>	<b>24,652</b>	<b>1.99%</b>
<b>SUBTOTAL FOR ACADEMIC</b>	<b>70,709</b>	<b>80,501</b>	<b>87,704</b>	<b>83,492</b>	<b>76,177</b>	<b>7.73%</b>

<sup>1</sup> Students who enroll in multiple courses are counted once for each course.

<sup>2</sup> Geographic Information Systems began in Fall 2009; previously, enrollments were reported under Geography until Fall 2010.

NOTE: Disciplines are listed under the current (2012-13) dean area; they may have been listed under another dean area in previous years. A "." means that the program did not offer courses that semester.

Source: Spring 12th Class Day Data

**Course Enrollment<sup>1</sup>  
Workforce Areas  
Spring 2009 - 2013**

<b>Applied Technologies, Multimedia, &amp; Public Services</b>	<b>Spring 2009</b>	<b>Spring 2010</b>	<b>Spring 2011</b>	<b>Spring 2012</b>	<b>Spring 2013</b>	<b>09-13 % chg</b>
American Sign Language Interpreter Training <sup>2</sup>	.	.	546	579	519	.
Auto Body Collision & Refinishing <sup>3</sup>	.	89	117	129	113	.
Automotive Technology & Outdoor Powered Equipment	527	570	716	650	606	14.99%
Building Construction Technology	420	418	484	461	390	-7.14%
Child Care & Development	497	470	432	422	419	-15.69%
Commercial Music Management	512	543	579	533	524	2.34%
Criminal Justice	839	982	1,166	1,201	1,092	30.15%
Fire Protection Technology	299	316	335	345	326	9.03%
Heating, AC, & Refrigeration Technology	241	272	323	313	271	12.45%
Human Services	751	826	495	484	432	-42.48%
Jewelry	143	121	135	153	143	0.00%
Music	813	834	927	883	914	12.42%
Paralegal	317	332	368	388	390	23.03%
Photographic Technology	497	577	621	566	461	-7.24%
Radio-TV-Film	377	442	487	518	492	30.50%
Welding Technology	348	345	419	423	433	24.43%
<b>TOTAL</b>	<b>6,581</b>	<b>7,137</b>	<b>8,150</b>	<b>8,048</b>	<b>7,525</b>	<b>14.34%</b>

<b>Business Studies</b>	<b>Spring 2009</b>	<b>Spring 2010</b>	<b>Spring 2011</b>	<b>Spring 2012</b>	<b>Spring 2013</b>	<b>09-13 % chg</b>
Accounting	1,498	1,727	1,938	1,823	1,850	23.50%
Business & Technical Communications	192	291	332	395	447	132.81%
Culinary Arts	220	295	349	392	332	50.91%
Financial Management	137	187	187	133	119	-13.14%
Hospitality Management	195	230	280	260	273	40.00%
International Business	83	115	118	66	54	-34.94%
Management	1,366	1,669	1,536	1,521	1,319	-3.44%
Marketing	459	552	597	487	406	-11.55%
Meeting & Events Planning	27	47	37	47	24	-11.11%
Office Administration	397	523	561	494	426	7.30%
Real Estate	287	290	312	258	280	-2.44%
Travel & Tourism	14	23	26	32	20	42.86%
<b>TOTAL</b>	<b>4,875</b>	<b>5,949</b>	<b>6,273</b>	<b>5,908</b>	<b>5,550</b>	<b>13.85%</b>

<sup>1</sup> Students who enroll in multiple courses are counted once for each course.

<sup>2</sup> American Sign Language Interpreter Training began in Fall 2010.

<sup>3</sup> Auto Body Collision & Refinishing began in Fall 2008; previously, enrollments were reported under Automotive Technology until Summer 2009.

NOTE: Disciplines are listed under the current (2012-13) dean area; they may have been listed under another dean area in previous years. A "." means that the program did not offer courses that semester.

Source: Spring 12th Class Day Data

**Course Enrollment<sup>1</sup>  
Workforce Areas  
Spring 2009 - 2013**

<b>Computer Studies &amp; Advanced Technology</b>	<b>Spring 2009</b>	<b>Spring 2010</b>	<b>Spring 2011</b>	<b>Spring 2012</b>	<b>Spring 2013</b>	<b>09-13 % chg</b>
Architectural & Engineering CAD	547	559	538	560	504	-7.86%
Computer Information Technology	1,311	1,549	1,720	1,678	1,739	32.65%
Computer Science	1,508	1,761	1,826	1,862	1,627	7.89%
Electronics & Advanced Technology	310	368	429	370	337	8.71%
Land Surveying Technology/Geomatics	40	29	47	42	22	-45.00%
Visual Communication	1,292	1,482	1,559	1,510	1,501	16.18%
<b>TOTAL</b>	<b>5,008</b>	<b>5,748</b>	<b>6,119</b>	<b>6,022</b>	<b>5,730</b>	<b>14.42%</b>
<b>Health Sciences</b>	<b>Spring 2009</b>	<b>Spring 2010</b>	<b>Spring 2011</b>	<b>Spring 2012</b>	<b>Spring 2013</b>	<b>09-13 % chg</b>
Allied Health Sciences	1,042	1,165	1,300	1,273	1,130	8.45%
Dental Hygiene	104	99	96	99	91	-12.50%
Diagnostic Medical Imaging Radiology	193	195	227	249	252	30.57%
Emergency Medical Services Professions	353	361	359	412	394	11.61%
Health & Kinesiology	2,374	2,773	2,961	2,731	2,248	-5.31%
Health Information Technology	89	165	165	159	148	66.29%
Medical Lab Technology	101	103	132	133	140	38.61%
Nursing - Professional	2,081	2,154	2,241	1,979	1,830	-12.06%
Nursing - Vocational	384	434	503	453	430	11.98%
Occupational Therapy Assistant	125	145	146	154	151	20.80%
Personal Fitness Trainer	21	27	41	49	55	161.90%
Pharmacy Technology	163	199	191	190	198	21.47%
Physical Therapist Assistant	84	101	114	132	133	58.33%
Sonography	90	102	90	103	82	-8.89%
Surgical Technology	94	94	98	102	112	19.15%
<b>TOTAL</b>	<b>7,298</b>	<b>8,117</b>	<b>8,664</b>	<b>8,218</b>	<b>7,394</b>	<b>1.32%</b>
<b>SUBTOTAL FOR WORKFORCE</b>	<b>23,762</b>	<b>26,951</b>	<b>29,206</b>	<b>28,196</b>	<b>26,199</b>	<b>10.26%</b>
<b>GRAND TOTAL (Academic &amp; Workforce)</b>	<b>94,471</b>	<b>107,452</b>	<b>116,910</b>	<b>111,688</b>	<b>102,376</b>	<b>8.37%</b>

<sup>1</sup> Students who enroll in multiple courses are counted once for each course.

NOTE: Disciplines are listed under the current (2012-13) dean area; they may have been listed under another dean area in previous years. A "." means that the program did not offer courses that semester.

Source: Spring 12th Class Day Data

**Semester Credit Hours<sup>1</sup>**  
**Academic Areas**  
**Spring 2009 - 2013**

<b>Arts &amp; Humanities</b>	<b>Spring 2009</b>	<b>Spring 2010</b>	<b>Spring 2011</b>	<b>Spring 2012</b>	<b>Spring 2013</b>	<b>09-13 % chg</b>
Arabic	145	128	155	134	141	-2.76%
Art	5,922	6,426	7,374	7,107	6,927	16.97%
Chinese	109	128	100	110	136	24.77%
Creative Writing	684	708	747	741	654	-4.39%
Dance	211	349	361	432	363	72.04%
Drama	1,309	1,462	1,853	1,686	1,427	9.01%
English for Speakers of Other Languages	2,244	2,727	3,234	3,429	2,508	11.76%
French	1,535	1,771	1,703	1,657	1,407	-8.34%
German	590	656	655	599	592	0.34%
Humanities	939	1,437	2,025	2,007	1,827	94.57%
Japanese	948	984	858	904	876	-7.59%
Latin	80	132	147	278	246	207.50%
Philosophy	6,825	7,125	8,061	7,485	6,987	2.37%
Religion	315	444	333	420	168	-46.67%
Russian	125	146	83	103	215	72.00%
Spanish	11,303	11,939	13,036	11,483	10,418	-7.83%
<b>TOTAL</b>	<b>33,284</b>	<b>36,562</b>	<b>40,725</b>	<b>38,575</b>	<b>34,892</b>	<b>4.83%</b>
<b>Communications</b>	<b>Spring 2009</b>	<b>Spring 2010</b>	<b>Spring 2011</b>	<b>Spring 2012</b>	<b>Spring 2013</b>	<b>09-13 % chg</b>
English	27,435	30,696	32,628	31,173	30,780	12.19%
Journalism	828	888	888	831	804	-2.90%
Reading - Developmental	2,820	3,972	3,972	3,909	2,349	-16.70%
Speech	8,595	9,843	10,524	10,386	10,875	26.53%
Study Skills	144	186	220	307	193	34.03%
Writing - Developmental	2,174	2,488	3,300	3,273	2,741	26.08%
<b>TOTAL</b>	<b>41,996</b>	<b>47,543</b>	<b>51,532</b>	<b>49,879</b>	<b>47,742</b>	<b>13.68%</b>

<sup>1</sup> Students who enroll in multiple courses are counted once for each course.

NOTE: Disciplines are listed under the current (2012-13) dean area; they may have been listed under another dean area in previous years. A "." means that the program did not offer courses that semester.

Source: Spring 12th Class Day Data

**Semester Credit Hours<sup>1</sup>  
Academic Areas  
Spring 2009 - 2013**

<b>Math &amp; Sciences</b>	<b>Spring 2009</b>	<b>Spring 2010</b>	<b>Spring 2011</b>	<b>Spring 2012</b>	<b>Spring 2013</b>	<b>09-13 % chg</b>
Astronomy	1,006	1,231	1,461	1,296	1,233	22.56%
Biology	14,828	17,198	20,449	19,379	18,460	24.49%
Biotechnology	320	202	243	237	236	-26.25%
Chemistry	6,277	7,527	8,613	8,458	7,109	13.25%
Engineering	181	271	317	367	416	129.83%
Environmental Science & Technology	867	923	930	719	668	-22.95%
Geology	2,142	2,564	2,496	2,212	1,624	-24.18%
Mathematics	19,517	21,474	23,802	22,972	21,209	8.67%
Mathematics - Developmental	20,130	23,460	25,373	24,872	20,654	2.60%
Physics	3,858	4,271	4,796	4,180	4,232	9.69%
<b>TOTAL</b>	<b>69,126</b>	<b>79,121</b>	<b>88,480</b>	<b>84,692</b>	<b>75,841</b>	<b>9.71%</b>
<b>Social &amp; Behavioral Sciences</b>	<b>Spring 2009</b>	<b>Spring 2010</b>	<b>Spring 2011</b>	<b>Spring 2012</b>	<b>Spring 2013</b>	<b>09-13 % chg</b>
Anthropology	2,292	2,922	3,153	2,304	2,520	9.95%
Economics	7,380	8,265	7,689	6,591	6,324	-14.31%
Educational Instruction	585	786	726	627	561	-4.10%
Geography	2,065	2,665	2,604	2,100	1,853	-10.27%
Geographic Information Systems <sup>2</sup>	.	.	179	209	259	.
Government	18,462	20,559	20,961	19,746	20,121	8.99%
History	21,189	23,457	24,498	23,151	20,694	-2.34%
Human Development	1,530	2,133	2,190	2,382	1,497	-2.16%
Military Science	18	60	54	34	18	0.00%
Psychology	12,645	13,572	15,159	15,240	13,503	6.79%
Sociology	5,313	6,825	7,614	6,330	5,742	8.07%
<b>TOTAL</b>	<b>71,479</b>	<b>81,244</b>	<b>84,827</b>	<b>78,714</b>	<b>73,092</b>	<b>2.26%</b>
<b>SUBTOTAL FOR ACADEMIC</b>	<b>215,885</b>	<b>244,470</b>	<b>265,564</b>	<b>251,860</b>	<b>231,567</b>	<b>7.26%</b>

<sup>1</sup> Students who enroll in multiple courses are counted once for each course.

<sup>2</sup> Geographic Information Systems began in Fall 2009; previously, enrollments were reported under Geography until Fall 2010.

NOTE: Disciplines are listed under the current (2012-13) dean area; they may have been listed under another dean area in previous years. A "." means that the program did not offer courses that semester.

Source: Spring 12th Class Day Data

**Semester Credit Hours<sup>1</sup>  
Workforce Areas  
Spring 2009 - 2013**

<b>Applied Technologies, Multimedia, &amp; Public Services</b>	<b>Spring 2009</b>	<b>Spring 2010</b>	<b>Spring 2011</b>	<b>Spring 2012</b>	<b>Spring 2013</b>	<b>09-13 % chg</b>
American Sign Language Interpreter Training <sup>2</sup>	.	.	2,007	2,112	1,896	.
Auto Body Collision & Refinishing <sup>3</sup>	.	299	411	439	382	.
Automotive Technology & Outdoor Powered Equipment	2,042	2,280	2,864	2,600	2,416	18.32%
Building Construction Technology	1,549	1,578	1,723	1,656	1,434	-7.42%
Child Care & Development	1,577	1,533	1,371	1,306	1,243	-21.18%
Commercial Music Management	1,510	1,584	1,717	1,597	1,583	4.83%
Criminal Justice	2,557	2,997	3,575	3,668	3,362	31.48%
Fire Protection Technology	1,032	1,103	1,160	1,200	1,118	8.33%
Heating, AC, & Refrigeration Technology	944	1,054	1,248	1,202	1,060	12.29%
Human Services	2,542	2,801	1,518	1,486	1,338	-47.36%
Jewelry	572	484	540	612	572	0.00%
Music	1,798	1,849	1,934	2,047	2,134	18.69%
Paralegal	951	996	1,104	1,164	1,170	23.03%
Photographic Technology	1,549	1,793	1,920	1,737	1,390	-10.26%
Radio-TV-Film	1,131	1,326	1,461	1,554	1,476	30.50%
Welding Technology	1,392	1,380	1,676	1,692	1,732	24.43%
<b>TOTAL</b>	<b>21,146</b>	<b>23,057</b>	<b>26,229</b>	<b>26,072</b>	<b>24,306</b>	<b>14.94%</b>
<b>Business Studies</b>	<b>Spring 2009</b>	<b>Spring 2010</b>	<b>Spring 2011</b>	<b>Spring 2012</b>	<b>Spring 2013</b>	<b>09-13 % chg</b>
Accounting	4,587	5,283	5,901	5,546	5,627	22.67%
Business & Technical Communications	604	898	1,013	1,213	1,369	126.66%
Culinary Arts	593	778	941	1,072	914	54.13%
Financial Management	411	561	561	399	355	-13.63%
Hospitality Management	585	690	840	780	819	40.00%
International Business	243	345	354	198	162	-33.33%
Management	4,080	5,007	4,588	4,563	3,957	-3.01%
Marketing	1,377	1,656	1,791	1,461	1,218	-11.55%
Meeting & Events Planning	81	141	111	141	72	-11.11%
Office Administration	998	1,335	1,465	1,273	1,104	10.62%
Real Estate	896	957	1,025	834	730	-18.53%
Travel & Tourism	42	69	78	96	60	42.86%
<b>TOTAL</b>	<b>14,497</b>	<b>17,720</b>	<b>18,668</b>	<b>17,576</b>	<b>16,387</b>	<b>13.04%</b>

<sup>1</sup> Students who enroll in multiple courses are counted once for each course.

<sup>2</sup> American Sign Language Interpreter Training began in Fall 2010.

<sup>3</sup> Auto Body Collision & Refinishing began in Fall 2008; previously, enrollments were reported under Automotive Technology until Summer 2009.

NOTE: Disciplines are listed under the current (2012-13) dean area; they may have been listed under another dean area in previous years. A "." means that the program did not offer courses that semester.

Source: Spring 12th Class Day Data

**Semester Credit Hours<sup>1</sup>  
Workforce Areas  
Spring 2009 - 2013**

<b>Computer Studies &amp; Advanced Technology</b>	<b>Spring 2009</b>	<b>Spring 2010</b>	<b>Spring 2011</b>	<b>Spring 2012</b>	<b>Spring 2013</b>	<b>09-13 % chg</b>
Architectural & Engineering CAD	2,188	2,236	2,152	2,240	2,016	-7.86%
Computer Information Technology	4,143	4,930	5,441	5,309	5,475	32.15%
Computer Science	4,580	5,360	5,563	5,671	4,967	8.45%
Electronics & Advanced Technology	1,149	1,336	1,552	1,388	1,225	6.61%
Land Surveying Technology/Geomatics	126	89	141	127	66	-47.62%
Visual Communication	4,845	5,596	5,780	5,635	5,598	15.54%
<b>TOTAL</b>	<b>17,031</b>	<b>19,547</b>	<b>20,629</b>	<b>20,370</b>	<b>19,347</b>	<b>13.60%</b>
<b>Health Sciences</b>	<b>Spring 2009</b>	<b>Spring 2010</b>	<b>Spring 2011</b>	<b>Spring 2012</b>	<b>Spring 2013</b>	<b>09-13 % chg</b>
Allied Health Sciences	2,532	2,792	3,211	3,119	2,715	7.23%
Dental Hygiene	225	214	210	214	198	-12.00%
Diagnostic Medical Imaging Radiology	542	555	639	705	716	32.10%
Emergency Medical Services Professions	890	961	967	1,050	1,023	14.94%
Health & Kinesiology	3,093	3,655	3,810	3,569	2,993	-3.23%
Health Information Technology	264	468	463	453	413	56.44%
Medical Lab Technology	281	274	400	366	391	39.15%
Nursing - Professional	5,072	5,061	5,202	4,893	4,480	-11.67%
Nursing - Vocational	1,171	1,376	1,552	1,363	1,345	14.86%
Occupational Therapy Assistant	307	344	352	365	362	17.92%
Personal Fitness Trainer	70	91	146	168	188	168.57%
Pharmacy Technology	471	577	536	541	564	19.75%
Physical Therapist Assistant	268	340	382	440	440	64.18%
Sonography	327	371	290	320	257	-21.41%
Surgical Technology	342	342	370	390	416	21.64%
<b>TOTAL</b>	<b>15,855</b>	<b>17,421</b>	<b>18,530</b>	<b>17,956</b>	<b>16,501</b>	<b>4.07%</b>
<b>SUBTOTAL FOR WORKFORCE</b>	<b>68,529</b>	<b>77,745</b>	<b>84,056</b>	<b>81,974</b>	<b>76,541</b>	<b>11.69%</b>
<b>GRAND TOTAL (Academic &amp; Workforce)</b>	<b>284,414</b>	<b>322,215</b>	<b>349,620</b>	<b>333,834</b>	<b>308,108</b>	<b>8.33%</b>

<sup>1</sup> Students who enroll in multiple courses are counted once for each course.

NOTE: Disciplines are listed under the current (2012-13) dean area; they may have been listed under another dean area in previous years.

Source: Spring 12th Class Day Data

**Contact Hours<sup>1</sup>  
Academic Areas  
Spring 2009 - 2013**

<b>Arts &amp; Humanities</b>	<b>Spring 2009</b>	<b>Spring 2010</b>	<b>Spring 2011</b>	<b>Spring 2012</b>	<b>Spring 2013</b>	<b>09-13 % chg</b>
Arabic	2,320	2,048	2,480	2,144	2,256	-2.76%
Art	132,768	141,536	158,736	152,016	144,528	8.86%
Chinese	1,744	2,048	1,600	1,760	2,176	24.77%
Creative Writing	10,944	11,328	11,952	11,856	10,464	-4.39%
Dance	8,224	13,040	13,184	13,952	10,640	29.38%
Drama	26,032	29,376	35,680	31,648	27,376	5.16%
English for Speakers of Other	47,872	58,368	69,168	73,312	53,632	12.03%
French	24,560	28,336	27,248	26,512	22,512	-8.34%
German	9,440	10,496	10,480	9,584	9,472	0.34%
Humanities	15,024	22,992	32,400	32,112	29,232	94.57%
Japanese	15,168	15,744	13,728	14,464	14,016	-7.59%
Latin	1,280	2,112	2,352	4,448	3,936	207.50%
Philosophy	109,200	114,000	128,976	119,760	111,792	2.37%
Religion	5,040	7,104	5,328	6,720	2,688	-46.67%
Russian	2,000	2,336	1,328	1,648	3,440	72.00%
Spanish	181,040	191,424	208,928	183,728	166,688	-7.93%
<b>TOTAL</b>	<b>592,656</b>	<b>652,288</b>	<b>723,568</b>	<b>685,664</b>	<b>614,848</b>	<b>3.74%</b>
<b>Communications</b>	<b>Spring 2009</b>	<b>Spring 2010</b>	<b>Spring 2011</b>	<b>Spring 2012</b>	<b>Spring 2013</b>	<b>09-13 % chg</b>
English	438,960	491,136	522,048	498,768	492,480	12.19%
Journalism	13,616	14,688	14,544	13,872	13,392	-1.65%
Reading - Developmental	50,480	63,120	73,264	71,984	42,512	-15.78%
Speech	137,520	157,488	168,384	166,176	174,000	26.53%
Study Skills	2,304	2,976	3,520	4,912	3,088	34.03%
Writing - Developmental	41,404	47,392	61,920	60,752	51,488	24.36%
<b>TOTAL</b>	<b>684,284</b>	<b>776,800</b>	<b>843,680</b>	<b>816,464</b>	<b>776,960</b>	<b>13.54%</b>

<sup>1</sup> Students who enroll in multiple courses are counted once for each course.

NOTE: Disciplines are listed under the current (2012-13) dean area; they may have been listed under another dean area in previous years. A "." means that the program did not offer courses that semester.

Source: Spring 12th Class Day Data



**Contact Hours<sup>1</sup>  
Academic Areas  
Spring 2009 - 2013**

<b>Math &amp; Sciences</b>	<b>Spring 2009</b>	<b>Spring 2010</b>	<b>Spring 2011</b>	<b>Spring 2012</b>	<b>Spring 2013</b>	<b>09-13 % chg</b>
Astronomy	16,800	21,936	26,160	23,232	21,840	30.00%
Biology	326,976	380,528	457,440	431,200	409,968	25.38%
Biotechnology	9,264	4,800	7,008	6,400	9,280	0.17%
Chemistry	150,384	179,664	206,256	202,464	170,448	13.34%
Engineering	2,896	4,336	5,072	5,872	6,656	129.83%
Environmental Science & Technology	14,336	15,792	15,680	12,672	11,472	-19.98%
Geology	43,872	52,128	51,552	46,272	33,792	-22.98%
Mathematics	312,624	343,840	381,056	368,144	339,424	8.57%
Mathematics - Developmental	431,344	501,328	540,784	528,688	441,152	2.27%
Physics	92,160	101,616	114,144	100,320	101,568	10.21%
<b>TOTAL</b>	<b>1,400,656</b>	<b>1,605,968</b>	<b>1,805,152</b>	<b>1,725,264</b>	<b>1,545,600</b>	<b>10.35%</b>
	<b>Spring 2009</b>	<b>Spring 2010</b>	<b>Spring 2011</b>	<b>Spring 2012</b>	<b>Spring 2013</b>	<b>09-13 % chg</b>
<b>Social &amp; Behavioral Sciences</b>						
Anthropology	36,912	47,328	50,832	37,488	40,512	9.75%
Economics	118,080	132,240	123,024	105,456	101,184	-14.31%
Educational Instruction	9,360	12,576	11,616	10,032	8,976	-4.10%
Geography	36,048	45,552	44,160	36,384	32,592	-9.59%
Geographic Information Systems <sup>2</sup>	.	.	4,560	5,232	6,752	.
Government	296,416	329,776	336,144	316,832	322,896	8.93%
History	339,024	375,312	391,968	370,416	331,104	-2.34%
Human Development	28,968	39,648	41,496	46,176	27,912	-3.65%
Military Science	432	1,440	1,296	816	432	0.00%
Psychology	202,608	217,152	242,544	243,840	216,048	6.63%
Sociology	85,056	109,200	121,824	101,280	91,872	8.01%
<b>TOTAL</b>	<b>1,152,904</b>	<b>1,310,224</b>	<b>1,369,464</b>	<b>1,273,952</b>	<b>1,180,280</b>	<b>2.37%</b>
<b>SUBTOTAL FOR ACADEMIC</b>	<b>3,830,500</b>	<b>4,345,280</b>	<b>4,741,864</b>	<b>4,501,344</b>	<b>4,117,688</b>	<b>7.50%</b>

<sup>1</sup> Students who enroll in multiple courses are counted once for each course.

<sup>2</sup> Geographic Information Systems began in Fall 2009; previously, enrollments were reported under Geography until Fall 2010.

NOTE: Disciplines are listed under the current (2012-13) dean area; they may have been listed under another dean area in previous years. A "." means that the program did not offer courses that semester.

Source: Spring 12th Class Day Data

**Contact Hours<sup>1</sup>  
Workforce Areas  
Spring 2009 - 2013**

<b>Applied Technologies, Multimedia, &amp; Public Services</b>	<b>Spring 2009</b>	<b>Spring 2010</b>	<b>Spring 2011</b>	<b>Spring 2012</b>	<b>Spring 2013</b>	<b>09-13 % chg</b>
American Sign Language Interpreter Training <sup>2</sup>	.	.	49,120	52,400	47,360	.
Auto Body Collision & Refinishing <sup>3</sup>	.	8,784	10,464	12,944	10,160	.
Automotive Technology & Outdoor Powered Equipment	52,128	57,408	71,872	66,016	61,280	17.56%
Building Construction Technology	36,016	36,240	38,160	37,280	31,392	-12.84%
Child Care & Development	37,968	37,760	33,872	32,144	31,168	-17.91%
Commercial Music Management	33,536	35,936	38,352	35,760	35,456	5.73%
Criminal Justice	42,128	50,768	59,504	62,080	55,904	32.70%
Fire Protection Technology	21,696	23,600	24,544	25,536	23,264	7.23%
Heating, AC, & Refrigeration Technology	23,456	26,656	31,712	30,848	26,400	12.55%
Human Services	57,360	61,792	27,216	27,376	25,248	-55.98%
Jewelry	13,728	11,616	12,960	14,688	13,728	0.00%
Music	37,008	38,224	42,744	39,536	41,280	11.54%
Paralegal	18,336	19,776	20,544	21,984	22,080	20.42%
Photographic Technology	61,248	71,024	76,848	70,000	57,504	-6.11%
Radio-TV-Film	24,416	28,128	30,448	33,312	30,592	25.29%
Welding Technology	33,536	33,120	40,352	40,736	41,696	24.33%
<b>TOTAL</b>	<b>492,560</b>	<b>540,832</b>	<b>608,712</b>	<b>602,640</b>	<b>554,512</b>	<b>12.58%</b>
<b>Business Studies</b>	<b>Spring 2009</b>	<b>Spring 2010</b>	<b>Spring 2011</b>	<b>Spring 2012</b>	<b>Spring 2013</b>	<b>09-13 % chg</b>
Accounting	97,104	109,312	122,416	114,256	116,432	19.90%
Business & Technical Communications	9,664	14,656	16,496	19,408	21,904	126.66%
Culinary Arts	13,600	18,400	22,672	26,656	25,744	89.29%
Financial Management	6,576	8,976	8,976	6,384	5,680	-13.63%
Hospitality Management	10,368	13,584	16,272	17,344	14,560	40.43%
International Business	3,888	5,520	5,664	3,168	2,592	-33.33%
Management	65,520	81,072	73,408	73,248	63,312	-3.37%
Marketing	22,032	26,496	28,656	23,376	20,384	-7.48%
Meeting & Events Planning	1,296	2,256	1,776	2,256	1,152	-11.11%
Office Administration	23,632	31,456	33,744	29,872	25,760	9.00%
Real Estate	14,336	15,312	16,400	13,344	11,680	-18.53%
Travel & Tourism	672	1,232	1,568	1,888	960	42.86%
<b>TOTAL</b>	<b>268,688</b>	<b>328,272</b>	<b>348,048</b>	<b>331,200</b>	<b>310,160</b>	<b>15.44%</b>

<sup>1</sup> Students who enroll in multiple courses are counted once for each course.

<sup>2</sup> American Sign Language Interpreter Training began in Fall 2010.

<sup>3</sup> Auto Body Collision & Refinishing began in Fall 2008; previously, enrollments were reported under Automotive Technology until Summer 2009.

NOTE: Disciplines are listed under the current (2012-13) dean area; they may have been listed under another dean area in previous years. A "." means that the program did not offer courses that semester.

Source: Spring 12th Class Day Data

## ENROLLMENT BY AREA

### Contact Hours<sup>1</sup> Workforce Areas Spring 2009 - 2013

<b>Computer Studies &amp; Advanced Technology</b>	<b>Spring 2009</b>	<b>Spring 2010</b>	<b>Spring 2011</b>	<b>Spring 2012</b>	<b>Spring 2013</b>	<b>09-13 % chg</b>
Architectural & Engineering CAD	52,512	53,664	51,648	53,760	48,384	-7.86%
Computer Information Technology	94,880	112,256	124,224	121,536	124,656	31.38%
Computer Science	98,304	115,168	119,584	121,888	106,880	8.72%
Electronics & Advanced Technology	29,024	32,272	37,600	33,520	29,968	3.25%
Land Surveying Technology/Geomatics	3,648	1,808	2,640	2,800	1,344	-63.16%
Visual Communication	119,792	137,536	143,856	140,512	139,984	16.86%
<b>TOTAL</b>	<b>398,160</b>	<b>452,704</b>	<b>479,552</b>	<b>474,016</b>	<b>451,216</b>	<b>13.33%</b>
<hr/>						
<b>Health Sciences</b>	<b>Spring 2009</b>	<b>Spring 2010</b>	<b>Spring 2011</b>	<b>Spring 2012</b>	<b>Spring 2013</b>	<b>09-13 % chg</b>
Allied Health Sciences	40,512	44,672	51,376	49,904	43,440	7.23%
Dental Hygiene	10,832	10,560	10,240	10,560	9,792	-9.60%
Diagnostic Medical Imaging Radiology	25,184	28,032	29,888	35,040	35,776	42.06%
Emergency Medical Services Professions	31,606	32,792	31,640	37,258	35,830	13.36%
Health & Kinesiology	113,952	133,104	142,128	131,088	107,904	-5.31%
Health Information Technology	5,648	8,528	8,896	8,672	8,816	56.09%
Medical Lab Technology	10,448	9,936	15,632	16,512	17,648	68.91%
Nursing - Professional	179,232	176,624	181,728	170,544	156,336	-12.77%
Nursing - Vocational	35,488	42,304	45,856	42,608	41,184	16.05%
Occupational Therapy Assistant	11,600	14,720	14,208	15,392	14,800	27.59%
Personal Fitness Trainer	1,440	1,872	3,200	3,648	4,080	183.33%
Pharmacy Technology	12,208	16,848	14,848	14,832	15,520	27.13%
Physical Therapist Assistant	10,464	12,784	14,400	16,512	17,120	63.61%
Sonography	16,320	18,368	16,800	18,320	14,848	-9.02%
Surgical Technology	11,888	11,888	13,120	13,920	14,624	23.01%
<b>TOTAL</b>	<b>516,822</b>	<b>563,032</b>	<b>593,960</b>	<b>584,810</b>	<b>537,718</b>	<b>4.04%</b>
<b>SUBTOTAL FOR WORKFORCE</b>	<b>1,676,230</b>	<b>1,884,840</b>	<b>2,030,272</b>	<b>1,992,666</b>	<b>1,853,606</b>	<b>10.58%</b>
<b>GRAND TOTAL (Academic &amp; Workforce)</b>	<b>5,506,730</b>	<b>6,230,120</b>	<b>6,772,136</b>	<b>6,494,010</b>	<b>5,971,294</b>	<b>8.44%</b>

<sup>1</sup> Students who enroll in multiple courses are counted once for each course.

NOTE: Disciplines are listed under the current (2012-13) dean area; they may have been listed under another dean area in previous years.

Source: Spring 12th Class Day Data

**Distance Learning<sup>1</sup> Course Enrollment and Contact Hours  
Spring 2009 - 2013**

	Spring 2009	Spring 2010	Spring 2011	Spring 2012	Spring 2013	09-13 % chg
<b>COURSE ENROLLMENT<sup>2</sup></b>						
Directed Study (DIR)	260	254	236	212	35	-86.54%
Hybrid (HYD) <sup>3</sup>	269	670	758	997	1,272	372.86%
Instructional Television (ITV)	793	755	728	386	206	-74.02%
Online (ONL)	10,261	11,704	12,324	13,026	12,718	23.95%
Print-Based (PRN)	367	415	379	404	273	-25.61%
Unknown <sup>4</sup>	1	.	.	.	.	.
<b>TOTAL</b>	<b>11,951</b>	<b>13,798</b>	<b>14,425</b>	<b>15,025</b>	<b>14,504</b>	<b>21.36%</b>

	Spring 2009	Spring 2010	Spring 2011	Spring 2012	Spring 2013	09-13 % chg
<b>CONTACT HOURS<sup>5</sup></b>						
Directed Study (DIR)	24,816	22,720	20,432	21,728	1,680	-93.23%
Hybrid (HYD) <sup>3</sup>	12,912	36,304	41,056	53,872	70,080	442.75%
Instructional Television (ITV)	37,728	35,776	34,448	18,336	9,888	-73.79%
Online (ONL)	536,480	607,024	637,384	673,520	648,144	20.81%
Print-Based (PRN)	17,760	19,020	18,192	19,392	13,104	-26.22%
Unknown <sup>4</sup>	64	.	.	.	.	.
<b>TOTAL</b>	<b>629,760</b>	<b>721,744</b>	<b>751,512</b>	<b>786,848</b>	<b>742,896</b>	<b>17.96%</b>

<sup>1</sup> Distance Learning includes non-traditional courses offered through Directed Study, Hybrid courses, Instructional Television, Online, and Print-Based courses. Prior to Fall 2006, Distance Learning also included courses offered in Interactive Video Class format.

<sup>2</sup> Students who enroll in multiple courses are counted once for each course.

<sup>3</sup> Distance Learning Hybrids (HYD) offer students the majority (51% or more) of their course work online via the Internet, with some classroom and/or laboratory meeting times.

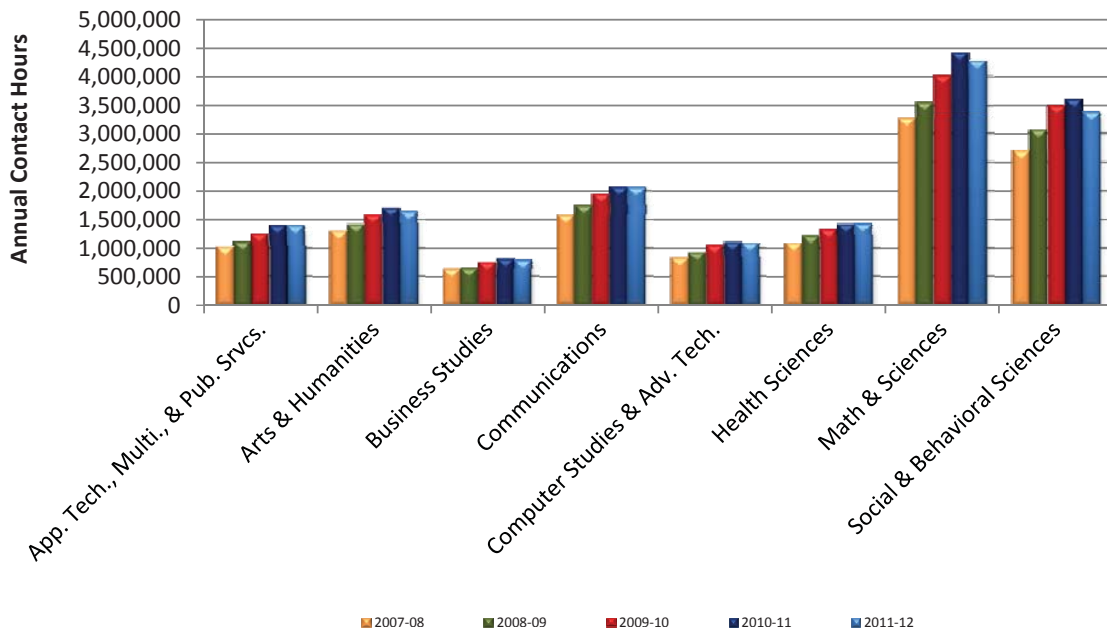
<sup>4</sup> Delivery method not listed.

<sup>5</sup> An instructional unit of time in which a student has contact with an instructor; includes lecture and/or laboratory time.

Source: Spring 12th Class Day Data

Annual Contact Hours by Dean Area  
Academic Years 2008 - 2012

Dean Area	2007-08	2008-09	2009-10	2010-11	2011-12	08-12 % chg
Applied Technologies, Multimedia, & Public Services	1,022,520	1,110,776	1,257,288	1,398,760	1,391,616	36.10%
Arts & Humanities	1,300,656	1,414,688	1,588,304	1,706,448	1,632,416	25.51%
Business Studies	638,560	652,720	753,856	817,008	778,496	21.91%
Communications	1,580,384	1,745,440	1,950,240	2,074,848	2,057,888	30.21%
Computer Studies & Advanced Technology	828,912	927,856	1,052,592	1,106,240	1,088,016	31.26%
Health Sciences	1,092,880	1,219,912	1,330,450	1,420,024	1,411,913	29.19%
Math & Sciences	3,267,744	3,541,600	4,013,872	4,414,992	4,272,368	30.74%
Social & Behavioral Sciences	2,700,368	3,066,040	3,491,152	3,602,936	3,371,896	24.87%
<b>TOTAL</b>	<b>12,432,024</b>	<b>13,679,032</b>	<b>15,437,754</b>	<b>16,541,256</b>	<b>16,004,609</b>	<b>28.74%</b>



NOTE: Disciplines are listed under the current (2011-12) dean area; they may have been included in another dean area in previous years.

Source: Fall 12th Class Day Data

THIS PAGE INTENTIONALLY LEFT BLANK