

Enrollment by Area

This section can be used for finding:

- course enrollment, semester credit hours, and contact hours by program.
- student headcount, enrollment, contact hours, and semester credit hours by dean area and location.

Contents

Useful Terms	160
<u>Summer 2013</u>	
Student Headcount, Course Enrollment, Contact and Semester Credit Hours by Location	161
Course Enrollment	162
Semester Credit Hours	166
Contact Hours	170
Distance Learning Course Enrollment and Contact Hours	174
<u>Fall 2013</u>	
Student Headcount, Course Enrollment, Contact and Semester Credit Hours by Location	175
Course Enrollment	176
Semester Credit Hours	180
Contact Hours	184
Distance Learning Course Enrollment and Contact Hours	188
<u>Spring 2014</u>	
Student Headcount, Course Enrollment, Contact and Semester Credit Hours by Location	189
Course Enrollment	190
Semester Credit Hours	194
Contact Hours	198
Distance Learning Course Enrollment and Contact Hours	202
Annual Contact Hours by Dean Area	203

Useful Terms

4th Class Day Data (Second summer session) – data for all summer classes, as of the 4th day of class of the second summer session. (Official Reporting Date for the Summer Semester)

12th Class Day Data – data for all fall or spring classes, as of the 12th day of class of the 16- week session. (Official Reporting Date for the Fall and Spring Semesters)

Centers – non-campus locations that are staffed, have regular posted hours, and offer credit courses on a regular basis (every semester).

Contact Hour - an instructional unit of time in which a student has contact with an instructor; includes both lecture and laboratory time.

Course Enrollment - the number of students registered for courses.

Distance Learning – includes non-traditional courses offered through Directed Studies, Hybrid courses, Instructional Television, Online, and Print-Based courses.

Duplicated Headcount - occurs when a student is counted more than one time because they are enrolled in more than one course. For example, a student who attends several courses at one location and one or more courses at a second location is counted twice, once at each location.

Semester Credit Hour (SCH) – a unit of measure of instruction consisting of 60 minutes of which 50 minutes must be direct instruction. For example, PSYC-2301 meets for three hours a week and is worth three semester credit hours.

Site-Based Instruction – credit classes staffed by ACC but offered at locations not owned by ACC.

Student Headcount – the number of students enrolled in one or more courses. This number may be duplicated or unduplicated.

Unduplicated Headcount - the sum of students enrolled in credit courses with each student counted only once during the reporting period.

**Student Headcount, Course Enrollment, Contact Hours, and Semester
Credit Hours by Location
Summer 2013**

Location	Student Headcount	Course Enrollment	Contact Hours	Semester Credit Hours
Cypress Creek Campus	2,474	3,306	193,440	9,934
Eastview Campus	1,597	2,271	193,498	6,306
Northridge Campus	5,278	7,390	446,520	22,271
Pinnacle Campus	1,125	1,433	78,048	4,317
Rio Grande Campus	4,822	6,598	398,336	20,890
Riverside Campus	2,798	3,857	236,896	11,519
Round Rock Campus	2,618	3,663	226,768	11,132
South Austin Campus	1,630	2,041	116,872	6,202
Distance Learning Centers	8,564 633	12,014 846	595,128 44,688	36,052 2,574
Site-Based Instruction	1,861	2,350	117,200	7,023

NOTE: Refer to Useful Terms or Glossary for definitions of terms. Students who attend multiple locations are counted once at each location. Students who enroll in multiple courses are counted once for each course.

Source: Summer 4th Class Day Data (Second summer session)

**Course Enrollment
Summer 2009 - 2013**

Applied Technologies, Multimedia, & Public Services	Summer 2009	Summer 2010	Summer 2011	Summer 2012	Summer 2013	09-13 % chg
American Sign Language Interpreter Training	.	.	249	193	236	.
Auto Body Collision & Refinishing	41	31	50	46	41	0.00%
Automotive Technology & Outdoor Powered Equipment	165	198	246	196	188	13.94%
Building Construction Technology	165	188	183	131	153	-7.27%
Child Care & Development	104	208	153	146	101	-2.88%
Commercial Music Management	144	166	163	170	161	11.81%
Criminal Justice	330	395	457	407	388	17.58%
Fire Protection Technology	25	55	22	61	59	136.00%
Heating, AC, & Refrigeration Technology	120	137	158	140	135	12.50%
Human Services	310	390	191	181	183	-40.97%
Jewelry	55	50	49	42	43	-21.82%
Music	336	373	362	323	375	11.61%
Paralegal	165	201	222	184	158	-4.24%
Photographic Technology	186	216	156	185	145	-22.04%
Radio-TV-Film	127	126	141	165	152	19.69%
Welding Technology	134	152	184	188	190	41.79%
TOTAL	2,407	2,886	2,986	2,758	2,708	12.51%

Arts & Humanities	Summer 2009	Summer 2010	Summer 2011	Summer 2012	Summer 2013	09-13 % chg
Arabic	23	26	23	19	16	-30.43%
Art	852	903	886	780	770	-9.62%
Chinese	.	22	22	15	22	.
Creative Writing	55	42	62	67	62	12.73%
Dance	42	67	57	58	50	19.05%
Drama	68	207	219	164	146	114.71%
English for Speakers of Other Languages	315	401	435	346	267	-15.24%
French	154	163	133	109	86	-44.16%
German	82	84	44	71	25	-69.51%
Humanities	141	250	315	195	210	48.94%
Japanese	47	71	59	30	18	-61.70%
Latin	30	29	17	42	0	-100.00%
Philosophy	837	913	986	936	780	-6.81%
Religion	72	86	52	63	47	-34.72%
Spanish	1,715	1,944	1,630	1,428	1,240	-27.70%
TOTAL	4,433	5,208	4,940	4,323	3,739	-15.66%

NOTE: American Sign Language Interpreter Training began in Fall 2010. Disciplines are listed under the current (2012-13) dean area; they may have been listed under another dean area in previous years. A "." means that the program did not offer courses that semester.

Source: Summer 4th Class Day Data (Second summer session)

**Course Enrollment (continued)
Summer 2009 - 2013**

Business Studies	Summer 2009	Summer 2010	Summer 2011	Summer 2012	Summer 2013	09-13 % chg
Accounting	993	978	1,034	993	1,064	7.15%
Business & Technical Communications	110	146	144	208	249	126.36%
Culinary Arts	53	71	144	111	114	115.09%
Financial Management	78	87	58	34	64	-17.95%
Hospitality Management	45	63	71	55	25	-44.44%
International Business	19	15	17	23	20	5.26%
Management	416	475	473	489	458	10.10%
Marketing	183	228	150	126	125	-31.69%
Meeting & Events Planning	11	10	12	9	17	54.55%
Office Administration	200	230	210	143	145	-27.50%
Real Estate	131	132	154	105	120	-8.40%
Travel & Tourism	6	15	13	13	20	233.33%
TOTAL	2,245	2,450	2,480	2,309	2,421	7.84%

Communications	Summer 2009	Summer 2010	Summer 2011	Summer 2012	Summer 2013	09-13 % chg
English	3,926	4,206	3,795	3,608	3,527	-10.16%
Journalism	74	67	94	104	104	40.54%
Reading - Developmental	318	440	393	343	190	-40.25%
Speech	2,088	2,274	2,412	2,245	2,237	7.14%
Writing - Developmental	233	294	338	309	193	-17.17%
TOTAL	6,639	7,281	7,032	6,609	6,251	-5.84%

NOTE: Disciplines are listed under the current (2012-13) dean area; they may have been listed under another dean area in previous years.

Source: Summer 4th Class Day Data (Second summer session)

Course Enrollment (continued)
 Summer 2009 - 2013

Computer Studies & Advanced Technology	Summer 2009	Summer 2010	Summer 2011	Summer 2012	Summer 2013	09-13 % chg
Architectural & Engineering CAD	230	221	220	184	209	-9.13%
Computer Information Technology	430	500	466	471	505	17.44%
Computer Science	733	776	707	665	582	-20.60%
Electronics & Advanced Technology	145	177	173	126	136	-6.21%
Land Surveying Technology/Geomatics	11	10	.	9	8	-27.27%
Visual Communication	513	579	615	629	631	23.00%
TOTAL	2,062	2,263	2,181	2,084	2,071	0.44%

Health Sciences	Summer 2009	Summer 2010	Summer 2011	Summer 2012	Summer 2013	09-13 % chg
Allied Health Sciences	578	652	706	566	557	-3.63%
Dental Hygiene	18	14	18	15	17	-5.56%
Diagnostic Medical Imaging Radiology	158	149	185	204	198	25.32%
Emergency Medical Services Professions	273	258	258	293	319	16.85%
Health and Kinesiology	1,124	1,177	1,236	1,079	984	-12.46%
Health Information Technology	66	86	147	93	61	-7.58%
Medical Lab Technology	83	119	180	159	153	84.34%
Nursing - Professional	570	354	409	314	338	-40.70%
Nursing - Vocational	161	179	255	160	154	-4.35%
Occupational Therapy Assistant	56	72	69	74	66	17.86%
Personal Fitness Trainer	5	6	7	4	6	20.00%
Pharmacy Technology	57	83	73	79	80	40.35%
Physical Therapist Assistant	126	82	38	37	28	-77.78%
Sonography	167	157	171	143	133	-20.36%
Surgical Technology	52	56	58	60	68	30.77%
TOTAL	3,494	3,444	3,810	3,280	3,162	-9.50%

NOTE: Disciplines are listed under the current (2012-13) dean area; they may have been listed under another dean area in previous years. A "." means that the program did not offer courses that semester.

Source: Summer 4th Class Day Data (Second summer session)

**Course Enrollment (continued)
Summer 2009 - 2013**

Math & Sciences	Summer 2009	Summer 2010	Summer 2011	Summer 2012	Summer 2013	09-13 % chg
Astronomy	115	172	142	105	135	17.39%
Biology	2,605	2,802	2,918	2,787	2,588	-0.65%
Biotechnology	37	32	7	31	20	-45.95%
Chemistry	1,908	2,024	2,296	2,182	2,030	6.39%
Engineering	.	59	51	40	45	.
Environmental Science & Technology	52	55	59	59	57	9.62%
Geology	264	347	260	193	225	-14.77%
Mathematics	3,188	3,373	3,565	3,323	3,143	-1.41%
Mathematics - Developmental	2,562	3,193	3,001	2,903	2,248	-12.26%
Physics	1,013	1,058	1,032	1,051	1,095	8.09%
TOTAL	11,744	13,115	13,331	12,674	11,586	-1.35%
Social & Behavioral Sciences	Summer 2009	Summer 2010	Summer 2011	Summer 2012	Summer 2013	09-13 % chg
Anthropology	291	432	329	294	262	-9.97%
Economics	2,107	2,337	2,075	1,891	1,773	-15.85%
Educational Instruction	49	43	38	29	32	-34.69%
Geographic Information Systems	.	.	1	3	12	.
Geography	380	382	335	278	308	-18.95%
Government	4,926	5,426	5,038	4,637	4,718	-4.22%
History	5,601	5,945	6,050	5,301	4,512	-19.44%
Human Development	205	351	263	206	217	5.85%
Psychology	1,472	1,937	1,746	1,543	1,481	0.61%
Sociology	615	834	676	460	515	-16.26%
TOTAL	15,646	17,687	16,551	14,642	13,830	-11.61%
GRAND TOTAL (Course Enrollment)	48,670	54,334	53,311	48,679	45,768	-5.96%

NOTE: Geographic Information Systems began in Fall 2009; previously, enrollments were reported under Geography until Fall 2010. Disciplines are listed under the current (2012-13) dean area; they may have been listed under another dean area in previous years. A "." means that the program did not offer courses that semester.

Source: Summer 4th Class Day Data (Second summer session)

**Semester Credit Hours
Summer 2009 - 2013**

Applied Technologies, Multimedia, & Public Services	Summer 2009	Summer 2010	Summer 2011	Summer 2012	Summer 2013	09-13 % chg
American Sign Language Interpreter Training	.	.	861	671	805	.
Auto Body Collision & Refinishing	164	116	174	166	154	-6.10%
Automotive Technology & Outdoor Powered Equipment	660	792	984	784	744	12.73%
Building Construction Technology	591	662	682	465	560	-5.25%
Child Care & Development	381	719	541	493	352	-7.61%
Commercial Music Management	405	463	465	505	475	17.28%
Criminal Justice	1,028	1,256	1,416	1,289	1,227	19.36%
Fire Protection Technology	75	165	66	183	177	136.00%
Heating, AC, & Refrigeration Technology	456	512	590	534	510	11.84%
Human Services	1,028	1,311	599	573	574	-44.16%
Jewelry	220	200	196	168	172	-21.82%
Music	794	892	849	827	962	21.16%
Paralegal	495	603	666	552	474	-4.24%
Photographic Technology	555	632	447	525	427	-23.06%
Radio-TV-Film	381	378	423	495	456	19.69%
Welding Technology	536	608	736	752	760	41.79%
TOTAL	7,769	9,309	9,695	8,982	8,829	13.64%

Arts & Humanities	Summer 2009	Summer 2010	Summer 2011	Summer 2012	Summer 2013	09-13 % chg
Arabic	115	130	115	95	80	-30.43%
Art	2,556	2,709	2,658	2,340	2,310	-9.62%
Chinese	.	110	110	75	110	.
Creative Writing	165	126	186	201	186	12.73%
Dance	73	123	96	95	79	8.22%
Drama	204	621	657	492	438	114.71%
English for Speakers of Other Languages	945	1,203	1,305	1,038	801	-15.24%
French	580	619	495	441	350	-39.66%
German	338	344	220	303	125	-63.02%
Humanities	423	750	945	585	630	48.94%
Japanese	235	355	295	150	90	-61.70%
Latin	150	145	85	210	0	-100.00%
Philosophy	2,511	2,739	2,958	2,808	2,340	-6.81%
Religion	216	258	156	189	141	-34.72%
Spanish	7,151	8,036	6,938	6,002	5,322	-25.58%
TOTAL	15,662	18,268	17,219	15,024	13,002	-16.98%

NOTE: American Sign Language Interpreter Training began in Fall 2010. Disciplines are listed under the current (2012-13) dean area; they may have been listed under another dean area in previous years. A "." means that the program did not offer courses that semester.

Source: Summer 4th Class Day Data (Second summer session)

**Semester Credit Hours (continued)
Summer 2009 - 2013**

Business Studies	Summer 2009	Summer 2010	Summer 2011	Summer 2012	Summer 2013	09-13 % chg
Accounting	2,999	2,952	3,117	2,991	3,208	6.97%
Business & Technical Communications	335	447	435	645	783	133.73%
Culinary Arts	135	191	372	298	293	117.04%
Financial Management	234	261	174	102	192	-17.95%
Hospitality Management	135	189	213	165	75	-44.44%
International Business	57	45	51	69	60	5.26%
Management	1,248	1,425	1,419	1,467	1,374	10.10%
Marketing	549	684	450	378	375	-31.69%
Meeting & Events Planning	33	30	36	27	51	54.55%
Office Administration	485	557	511	362	348	-28.25%
Real Estate	388	430	516	353	310	-20.10%
Travel & Tourism	18	45	39	39	60	233.33%
TOTAL	6,616	7,256	7,333	6,896	7,129	7.75%

Communications	Summer 2009	Summer 2010	Summer 2011	Summer 2012	Summer 2013	09-13 % chg
English	11,778	12,618	11,385	10,824	10,581	-10.16%
Journalism	222	201	282	312	312	40.54%
Reading - Developmental	954	1,316	1,179	1,029	570	-40.25%
Speech	6,264	6,822	7,236	6,735	6,711	7.14%
Writing - Developmental	699	882	1,014	927	579	-17.17%
TOTAL	19,917	21,839	21,096	19,827	18,753	-5.84%

NOTE: Disciplines are listed under the current (2012-13) dean area; they may have been listed under another dean area in previous years.

Source: Summer 4th Class Day Data (Second summer session)

Semester Credit Hours (continued)
Summer 2009 - 2013

Computer Studies & Advanced Technology	Summer 2009	Summer 2010	Summer 2011	Summer 2012	Summer 2013	09-13 % chg
Architectural & Engineering CAD	920	884	880	736	836	-9.13%
Computer Information Technology	1,329	1,535	1,433	1,444	1,547	16.40%
Computer Science	2,210	2,345	2,143	2,013	1,766	-20.09%
Electronics & Advanced Technology	548	651	653	461	516	-5.84%
Land Surveying Technology/Geomatics	33	30	.	27	24	-27.27%
Visual Communication Design	1,938	2,166	2,221	2,319	2,288	18.06%
TOTAL	6,978	7,611	7,330	7,000	6,977	-0.01%

Health Sciences	Summer 2009	Summer 2010	Summer 2011	Summer 2012	Summer 2013	09-13 % chg
Allied Health Sciences	1,462	1,596	1,755	1,419	1,363	-6.77%
Dental Hygiene	36	28	36	30	34	-5.56%
Diagnostic Medical Imaging Radiology	406	387	473	531	516	27.09%
Emergency Medical Services Professions	729	667	683	782	817	12.07%
Health & Kinesiology	1,644	1,695	1,812	1,561	1,506	-8.39%
Health Information Technology	190	241	389	257	130	-31.58%
Medical Lab Technology	168	227	325	311	308	83.33%
Nursing - Professional	1,173	779	817	603	650	-44.59%
Nursing - Vocational	678	725	1,065	672	651	-3.98%
Occupational Therapy Assistant	140	180	172	185	165	17.86%
Personal Fitness Trainer	10	12	14	8	12	20.00%
Pharmacy Technology	181	259	223	245	244	34.81%
Physical Therapist Assistant	375	220	152	148	112	-70.13%
Sonography	385	423	439	375	345	-10.39%
Surgical Technology	260	280	290	300	340	30.77%
TOTAL	7,837	7,719	8,645	7,427	7,193	-8.22%

NOTE: Disciplines are listed under the current (2012-13) dean area; they may have been listed under another dean area in previous years. A "." means that the program did not offer courses that semester.

Source: Summer 4th Class Day Data (Second summer session)

**Semester Credit Hours (continued)
Summer 2009 - 2013**

Math & Sciences	Summer 2009	Summer 2010	Summer 2011	Summer 2012	Summer 2013	09-13 % chg
Astronomy	345	535	448	337	427	23.77%
Biology	7,894	8,425	8,641	8,239	7,710	-2.33%
Biotechnology	138	128	28	124	80	-42.03%
Chemistry	3,840	4,064	4,608	4,384	4,080	6.25%
Engineering	.	155	131	105	114	.
Environmental Science & Technology	156	166	178	179	171	9.62%
Geology	882	1,157	887	671	777	-11.90%
Mathematics	10,616	11,145	11,812	11,138	10,466	-1.41%
Mathematics - Developmental	7,674	9,569	8,981	8,707	6,740	-12.17%
Physics	4,052	4,232	4,128	4,204	4,380	8.09%
TOTAL	35,597	39,576	39,842	38,088	34,945	-1.83%
Social & Behavioral Sciences	Summer 2009	Summer 2010	Summer 2011	Summer 2012	Summer 2013	09-13 % chg
Anthropology	873	1,296	987	882	786	-9.97%
Economics	6,321	7,011	6,225	5,673	5,319	-15.85%
Educational Instruction	147	129	114	87	96	-34.69%
Geographic Information Systems	.	.	2	4	29	.
Geography	1,165	1,172	1,028	868	958	-17.77%
Government	14,778	16,278	15,114	13,911	14,154	-4.22%
History	16,803	17,835	18,150	15,903	13,536	-19.44%
Human Development	337	655	449	330	525	55.79%
Psychology	4,416	5,811	5,238	4,629	4,443	0.61%
Sociology	1,845	2,502	2,028	1,380	1,545	-16.26%
TOTAL	46,685	52,689	49,335	43,667	41,391	-11.34%
GRAND TOTAL (Semester Credit Hours)	147,061	164,267	148,459	146,911	138,219	-6.01%

NOTE: Geographic Information Systems began in Fall 2009; previously, enrollments were reported under Geography until Fall 2010. Disciplines are listed under the current (2012-13) dean area; they may have been listed under another dean area in previous years. A "." means that the program did not offer courses that semester.

Source: Summer 4th Class Day Data (Second summer session)

**Contact Hours
Summer 2009 - 2013**

Applied Technologies, Multimedia, & Public Services	Summer 2009	Summer 2010	Summer 2011	Summer 2012	Summer 2013	09-13 % chg
American Sign Language Interpreter Training	.	.	21,104	16,304	20,080	.
Auto Body Collision & Refinishing	5,984	2,720	3,968	4,608	3,616	-39.57%
Automotive Technology & Outdoor Powered Equipment	15,840	20,192	26,240	21,664	19,840	25.25%
Building Construction Technology	14,144	15,808	15,296	11,408	12,192	-13.80%
Child Care & Development	9,616	16,864	13,120	11,360	8,304	-13.64%
Commercial Music Management	10,784	12,704	12,608	13,840	12,576	16.62%
Criminal Justice	18,624	21,824	24,896	22,352	23,088	23.97%
Fire Protection Technology	1,200	2,640	1,056	2,928	2,832	136.00%
Heating, AC, & Refrigeration Technology	11,904	13,728	15,840	13,856	13,440	12.90%
Human Services	23,840	30,928	12,912	13,008	12,384	-48.05%
Jewelry	5,280	4,800	4,704	4,032	4,128	-21.82%
Music	14,264	15,808	14,680	14,480	15,968	11.95%
Paralegal	7,920	9,648	10,656	8,832	7,584	-4.24%
Photographic Technology	22,224	26,640	19,088	23,120	17,088	-23.11%
Radio-TV-Film	9,376	9,376	9,872	10,912	9,568	2.05%
Welding Technology	12,864	14,720	17,792	18,048	18,240	41.79%
TOTAL	183,864	218,400	223,832	210,752	200,928	9.28%
Arts & Humanities	Summer 2009	Summer 2010	Summer 2011	Summer 2012	Summer 2013	09-13 % chg
Arabic	1,840	2,080	1,840	1,520	1,280	-30.43%
Art	55,152	58,608	56,496	50,016	46,992	-14.80%
Chinese	.	1,760	1,760	1,200	1,760	.
Creative Writing	2,640	2,016	2,976	3,216	2,976	12.73%
Dance	3,008	5,008	3,984	3,968	3,328	10.64%
Drama	3,680	11,216	11,440	8,704	7,328	99.13%
English for Speakers of Other Languages	20,160	25,664	27,840	22,144	17,088	-15.24%
French	9,280	9,904	7,920	7,056	5,600	-39.66%
German	5,408	5,504	3,520	4,848	2,000	-63.02%
Humanities	6,768	12,000	15,120	9,360	10,080	48.94%
Japanese	3,760	5,680	4,720	2,400	1,440	-61.70%
Latin	2,400	2,320	1,360	3,360	0	-100.00%
Philosophy	40,176	43,824	47,328	44,928	37,440	-6.81%
Religion	3,456	4,128	2,496	3,024	2,256	-34.72%
Spanish	114,416	128,576	111,008	96,032	85,152	-25.58%
TOTAL	272,144	318,288	299,808	261,776	224,720	-17.43%

NOTE: American Sign Language Interpreter Training began in Fall 2010. Disciplines are listed under the current (2012-13) dean area; they may have been listed under another dean area in previous years. A "." means that the program did not offer courses that semester.

Source: Summer 4th Class Day Data (Second summer session)

**Contact Hours (continued)
Summer 2009 - 2013**

Business Studies	Summer 2009	Summer 2010	Summer 2011	Summer 2012	Summer 2013	09-13 % chg
Accounting	60,384	58,368	63,456	61,008	64,928	7.53%
Business & Technical Communications	5,360	7,440	6,960	10,320	12,528	133.73%
Culinary Arts	2,960	4,656	8,192	7,072	7,120	140.54%
Financial Management	3,744	4,176	2,784	1,632	3,072	-17.95%
Hospitality Management	3,280	4,304	5,264	4,304	2,032	-38.05%
International Business	1,488	720	816	1,104	1,248	-16.13%
Management	19,968	22,800	22,704	23,952	22,464	12.50%
Marketing	8,784	10,944	7,200	6,048	6,000	-31.69%
Meeting & Events Planning	528	480	576	432	816	54.55%
Office Administration	11,776	13,376	12,304	8,432	8,912	-24.32%
Real Estate	6,208	6,880	8,256	5,648	4,960	-20.10%
Travel & Tourism	480	720	624	624	960	100.00%
TOTAL	124,960	134,864	139,136	130,576	135,040	8.07%

Communications	Summer 2009	Summer 2010	Summer 2011	Summer 2012	Summer 2013	09-13 % chg
English	188,448	201,888	182,160	173,184	169,296	-10.16%
Journalism	3,552	3,216	4,512	5,200	5,296	49.10%
Reading - Developmental	16,944	23,792	21,136	18,368	10,144	-40.13%
Speech	100,224	109,152	115,776	107,760	107,376	7.14%
Writing - Developmental	13,136	16,464	18,784	17,296	10,672	-18.76%
TOTAL	322,304	354,512	342,368	321,808	302,784	-6.06%

NOTE: Disciplines are listed under the current (2012-13) dean area; they may have been listed under another dean area in previous years.

Source: Summer 4th Class Day Data (Second summer session)

**Contact Hours (continued)
Summer 2009 - 2013**

Computer Studies & Advanced Technology	Summer 2009	Summer 2010	Summer 2011	Summer 2012	Summer 2013	09-13 % chg
Architectural & Engineering CAD	22,080	21,216	21,120	17,664	20,064	-9.13%
Computer Information Technology	29,008	33,376	31,216	31,440	33,616	15.89%
Computer Science	47,264	50,208	45,952	43,136	37,888	-19.84%
Electronics & Advanced Technology	13,552	15,760	15,648	11,008	12,512	-7.67%
Land Surveying Technology/Geomatics	528	480	.	432	384	-27.27%
Visual Communication	47,840	53,584	57,584	59,920	60,320	26.09%
TOTAL	160,272	174,624	171,520	163,600	164,784	2.82%

Health Sciences	Summer 2009	Summer 2010	Summer 2011	Summer 2012	Summer 2013	09-13 % chg
Allied Health Sciences	23,392	25,536	28,080	22,704	21,808	-6.77%
Dental Hygiene	864	672	864	720	816	-5.56%
Diagnostic Medical Imaging Radiology	18,096	17,504	21,056	24,064	23,440	29.53%
Emergency Medical Services Professions	25,986	25,816	25,181	29,603	31,754	22.20%
Health & Kinesiology	53,952	56,496	59,328	51,792	47,232	-12.46%
Health Information Technology	4,016	5,120	7,664	5,776	5,104	27.09%
Medical Lab Technology	9,632	13,120	20,672	18,704	18,144	88.37%
Nursing - Professional	43,520	29,072	32,016	23,120	25,840	-40.63%
Nursing - Vocational	23,824	25,216	37,120	23,552	22,960	-3.63%
Occupational Therapy Assistant	5,440	9,168	8,000	9,296	8,064	48.24%
Personal Fitness Trainer	1,120	1,344	1,568	896	1,344	20.00%
Pharmacy Technology	5,392	8,624	8,112	8,464	7,968	47.77%
Physical Therapist Assistant	12,800	8,896	4,256	4,144	3,136	-75.50%
Sonography	11,296	12,112	12,800	11,824	10,400	-7.93%
Surgical Technology	10,400	11,200	11,600	12,000	13,600	30.77%
TOTAL	249,730	249,896	278,317	246,659	241,610	-3.25%

NOTE: Disciplines are listed under the current (2012-13) dean area; they may have been listed under another dean area in previous years. A "." means that the program did not offer courses that semester.

Source: Summer 4th Class Day Data (Second summer session)

**Contact Hours (continued)
Summer 2009 - 2013**

Math & Sciences	Summer 2009	Summer 2010	Summer 2011	Summer 2012	Summer 2013	09-13 % chg
Astronomy	5,520	9,168	7,872	6,096	7,536	36.52%
Biology	171,728	182,176	189,104	179,968	167,760	-2.31%
Biotechnology	4,656	4,480	784	4,816	4,256	-8.59%
Chemistry	91,584	97,152	110,208	104,736	97,440	6.39%
Engineering	.	2,480	2,096	1,680	1,824	.
Environmental Science & Technology	2,496	2,928	3,120	3,408	2,736	9.62%
Geology	16,992	22,224	17,616	13,680	15,696	-7.63%
Mathematics	169,856	178,320	188,992	178,208	167,456	-1.41%
Mathematics - Developmental	163,696	204,112	189,696	183,888	142,864	-12.73%
Physics	97,248	101,568	99,072	100,896	105,120	8.09%
TOTAL	723,776	804,608	808,560	777,376	712,688	-1.53%
Social & Behavioral Sciences	Summer 2009	Summer 2010	Summer 2011	Summer 2012	Summer 2013	09-13 % chg
Anthropology	13,968	22,176	16,320	14,112	12,576	-9.97%
Economics	101,136	112,176	99,600	90,768	85,104	-15.85%
Educational Instruction	2,352	2,064	1,824	1,392	1,536	-34.69%
Geographic Information Systems	.	.	224	352	1,424	.
Geography	19,440	19,584	17,184	14,976	16,416	-15.56%
Government	236,448	260,448	242,720	222,576	226,464	-4.22%
History	268,848	285,360	290,400	254,448	216,576	-19.44%
Human Development	6,504	12,072	8,544	6,432	8,904	36.90%
Psychology	70,656	92,976	83,808	74,064	71,088	0.61%
Sociology	29,520	40,032	32,448	22,080	24,720	-16.26%
TOTAL	748,872	846,888	793,072	701,200	664,808	-11.23%
GRAND TOTAL (Contact Hours)	2,785,922	3,102,080	3,056,613	2,813,747	2,647,362	-4.97%

NOTE: Geographic Information Systems began in Fall 2009; previously, enrollments were reported under Geography until Fall 2010. Disciplines are listed under the current (2012-13) dean area; they may have been listed under another dean area in previous years. A "." means that the program did not offer courses that semester.

Source: Summer 4th Class Day Data (Second summer session)

**Distance Learning Course Enrollment and Contact Hours
Summer 2009 - 2013**

	Summer 2009	Summer 2010	Summer 2011	Summer 2012	Summer 2013	09-13 % chg
COURSE ENROLLMENT						
Directed Study (DIR)	50	43
Hybrid (HYD)	361	358	540	596	666	84.49%
Instructional Television (ITV)	548	569	346	300	235	-57.12%
Online (ONL)	9,380	10,393	11,089	10,618	10,843	15.60%
Print-Based (PRN)	291	353	359	317	270	-7.22%
Unknown ¹	34
TOTAL	10,664	11,716	12,334	11,831	12,014	12.66%

	Summer 2009	Summer 2010	Summer 2011	Summer 2012	Summer 2013	09-13 % chg
CONTACT HOURS						
Directed Study (DIR)	8,256	6,272
Hybrid (HYD)	17,328	18,448	26,448	30,000	34,528	99.26%
Instructional Television (ITV)	25,616	26,592	16,208	14,272	11,280	-55.97%
Online (ONL)	470,528	517,048	550,216	528,608	536,360	13.99%
Print-Based (PRN)	13,968	16,944	17,232	15,216	12,960	-7.22%
Unknown ¹	2,720
TOTAL	538,416	585,304	610,104	588,096	595,128	10.53%

¹ Delivery method not listed.

NOTE: Refer to Useful Terms or Glossary for definitions of terms.

Source: Summer 4th Class Day Data (Second summer session)

**Student Headcount, Course Enrollment, Contact Hours, and Semester
Credit Hours by Location
Fall 2013**

Location	Student Headcount	Course Enrollment	Contact Hours	Semester Credit Hours
Cypress Creek Campus	4,976	9,837	540,688	29,252
Eastview Campus	3,776	6,973	474,091	20,248
Elgin Campus	332	551	27,304	1,621
Northridge Campus	9,078	17,996	1,067,904	54,250
Pinnacle Campus	2,565	5,081	271,832	15,274
Rio Grande Campus	7,353	14,570	842,960	45,304
Riverside Campus	6,109	11,857	695,264	35,703
Round Rock Campus	4,665	9,508	572,216	28,306
South Austin Campus	3,572	6,125	339,832	18,382
Distance Learning Centers	9,416	14,635	745,568	43,617
Site-Based Instruction	1,457	2,425	125,728	7,357
	4,058	6,237	345,088	18,510

NOTE: Refer to Useful Terms or Glossary for definitions of terms. Students who attend multiple locations are counted once at each location. Students who enroll in multiple courses are counted once for each course.

Source: Fall 12th Class Day Data

Course Enrollment
Fall 2009 - 2013

Applied Technologies, Multimedia, & Public Services	Fall 2009	Fall 2010	Fall 2011	Fall 2012	Fall 2013	09-13 % chg
American Sign Language Interpreter Training	.	517	553	526	524	.
Auto Body Collision Repair & Refinishing	93	113	123	108	120	29.03%
Automotive Technology & Outdoor Powered Equipment	553	631	665	609	605	9.40%
Building Construction Technology	384	492	467	405	390	1.56%
Child Care & Development	395	479	414	366	326	-17.47%
Criminal Justice	892	1,072	1,156	1,025	966	8.30%
Fire Protection Technology	330	312	310	300	230	-30.30%
Heating, AC, & Refrigeration Technology	263	271	281	288	279	6.08%
Human Services	766	438	478	451	456	-40.47%
Jewelry	113	113	131	144	141	24.78%
Music	824	897	850	871	875	6.19%
Music Business, Performance & Technology	526	575	559	542	502	-4.56%
Paralegal	308	350	358	349	366	18.83%
Photographic Technology	524	579	585	504	465	-11.26%
Radio-TV-Film	370	382	403	431	464	25.41%
Welding Technology	354	405	419	430	431	21.75%
TOTAL	6,695	7,626	7,752	7,349	7,140	6.65%

Arts & Humanities	Fall 2009	Fall 2010	Fall 2011	Fall 2012	Fall 2013	09-13 % chg
Arabic	45	44	53	35	38	-15.56%
Art	1,897	2,323	2,506	2,340	2,194	15.66%
Chinese	36	32	28	36	38	5.56%
Creative Writing	206	234	229	232	210	1.94%
Dance	161	200	214	196	198	22.98%
Drama	500	561	553	533	489	-2.20%
English for Speakers of Other Languages	940	974	1,059	997	780	-17.02%
French	349	350	322	303	273	-21.78%
German	110	145	114	115	91	-17.27%
Humanities	427	500	684	640	633	48.24%
Japanese	210	236	221	176	164	-21.90%
Latin	85	83	74	73	46	-45.88%
Philosophy	2,162	2,391	2,321	2,295	2,194	1.48%
Religion	160	129	113	119	84	-47.50%
Russian	55	54	43	41	35	-36.36%
Spanish	2,505	2,683	2,494	2,184	2,015	-19.56%
TOTAL	9,848	10,939	11,028	10,315	9,482	-3.72%

NOTE: American Sign Language Interpreter Training began in Fall 2010. Disciplines are listed under the current (2013-14) dean area; they may have been listed under another dean area in previous years.

Source: Fall 12th Class Day Data

Course Enrollment (continued)
Fall 2009 - 2013

Business Studies	Fall 2009	Fall 2010	Fall 2011	Fall 2012	Fall 2013	09-13 % chg
Accounting	1,612	1,788	1,732	1,686	1,756	8.93%
Business & Technical Communications	192	251	363	383	410	113.54%
Culinary Arts	259	334	367	375	379	46.33%
Financial Management	147	178	144	106	128	-12.93%
Hospitality Management	206	238	239	223	225	9.22%
International Business	93	98	98	53	37	-60.22%
Management	1,493	1,600	1,480	1,273	1,229	-17.68%
Marketing	426	536	451	362	394	-7.51%
Meeting & Events Planning	41	50	36	40	20	-51.22%
Office Administration	517	540	470	468	396	-23.40%
Real Estate	285	330	266	285	256	-10.18%
Travel & Tourism	31	35	42	39	20	-35.48%
TOTAL	5,302	5,978	5,688	5,293	5,250	-0.98%

Communications	Fall 2009	Fall 2010	Fall 2011	Fall 2012	Fall 2013	09-13 % chg
English	10,967	11,802	12,045	12,142	12,717	15.96%
Journalism	243	276	289	290	250	2.88%
Reading - Developmental	1,267	1,484	1,604	1,236	916	-27.70%
Speech	3,371	3,506	3,676	3,715	3,776	12.01%
Study Skills	72	104	99	107	86	19.44%
Writing - Developmental	811	966	1,083	1,090	994	22.56%
TOTAL	16,731	18,138	18,796	18,580	18,739	12.00%

NOTE: Disciplines are listed under the current (2013-14) dean area; they may have been listed under another dean area in previous years.

Source: Fall 12th Class Day Data

**Course Enrollment (continued)
Fall 2009 - 2013**

Computer Studies & Advanced Technology	Fall 2009	Fall 2010	Fall 2011	Fall 2012	Fall 2013	09-13 % chg
Architectural & Engineering CAD	541	539	512	489	497	-8.13%
Computer Information Technology	1,406	1,547	1,564	1,569	1,554	10.53%
Computer Science	1,647	1,750	1,699	1,632	1,563	-5.10%
Electronics & Advanced Technologies	371	393	400	360	306	-17.52%
Land Surveying Technology/Geomatics	40	16	41	32	35	-12.50%
Visual Communication	1,383	1,532	1,501	1,497	1,464	5.86%
TOTAL	5,388	5,777	5,717	5,579	5,419	0.58%

Health Sciences	Fall 2009	Fall 2010	Fall 2011	Fall 2012	Fall 2013	09-13 % chg
Allied Health Science	1,025	1,287	1,232	1,136	1,086	5.95%
Dental Hygiene	143	129	144	127	136	-4.90%
Diagnostic Medical Imaging Radiology	302	308	340	349	362	19.87%
Emergency Medical Services Professions	325	349	388	387	377	16.00%
Health & Kinesiology	2,493	2,676	2,696	2,184	1,834	-26.43%
Health Information Technology	119	136	174	170	202	69.75%
Medical Lab Technology	115	151	194	179	168	46.09%
Nursing - Professional	2,070	2,300	2,164	1,792	1,826	-11.79%
Nursing - Vocational	423	355	446	409	343	-18.91%
Occupational Therapy Assistant	114	103	120	108	106	-7.02%
Personal Fitness Trainer	39	46	51	44	48	23.08%
Pharmacy Technician	145	150	143	160	156	7.59%
Physical Therapist Assistant	131	121	119	128	146	11.45%
Sonography	195	184	206	175	168	-13.85%
Surgical Technology	88	118	118	118	124	40.91%
TOTAL	7,727	8,413	8,535	7,466	7,082	-8.35%

NOTE: Disciplines are listed under the current (2013-14) dean area; they may have been listed under another dean area in previous years.

Source: Fall 12th Class Day Data

**Course Enrollment (continued)
Fall 2009 - 2013**

Math & Sciences	Fall 2009	Fall 2010	Fall 2011	Fall 2012	Fall 2013	09-13 % chg
Astronomy	305	379	408	346	364	19.34%
Biology	6,029	6,775	6,725	6,543	6,452	7.02%
Biotechnology	37	74	67	83	53	43.24%
Chemistry	3,175	3,953	4,079	3,754	3,567	12.35%
Engineering	108	162	157	161	157	45.37%
Environmental Science & Technology	266	273	236	198	197	-25.94%
Geology	680	697	621	493	522	-23.24%
Mathematics	7,038	7,639	7,440	7,508	7,207	2.40%
Mathematics - Developmental	8,162	9,109	8,822	8,215	6,659	-18.41%
Physics	919	1,066	1,023	1,037	954	3.81%
TOTAL	26,719	30,127	29,578	28,338	26,132	-2.20%
Social & Behavioral Sciences	Fall 2009	Fall 2010	Fall 2011	Fall 2012	Fall 2013	09-13 % chg
Anthropology	956	1,058	970	797	746	-21.97%
Economics	2,608	2,580	2,406	2,420	2,425	-7.02%
Education Instruction	243	321	186	180	166	-31.69%
Geography	803	872	686	636	568	-29.27%
Geographic Information Systems	.	56	50	62	72	.
Government	7,399	7,663	7,361	7,180	7,618	2.96%
History	8,094	8,586	8,333	8,008	7,332	-9.41%
Human Development	1,407	1,582	1,848	1,305	1,083	-23.03%
Military Science	27	27	23	20	15	-44.44%
Psychology	4,733	5,331	5,411	5,013	4,639	-1.99%
Sociology	1,949	2,361	2,330	1,952	1,886	-3.23%
TOTAL	28,219	30,437	29,604	27,573	26,550	-5.91%
GRAND TOTAL (Course Enrollment)	106,629	117,435	116,698	110,493	105,794	-0.78%

NOTE: Geographic Information Systems began in Fall 2009; previously, enrollments were reported under Geography until Fall 2010. Disciplines are listed under the current (2013-14) dean area; they may have been listed under another dean area in previous years.

Source: Fall 12th Class Day Data

Semester Credit Hours (continued)
Fall 2009 - 2013

Applied Technologies, Multimedia, & Public Services	Fall 2009	Fall 2010	Fall 2011	Fall 2012	Fall 2013	09-13 % chg
American Sign Language Interpreter Training	.	1,889	2,038	1,881	1,871	.
Auto Body Collision Repair & Refinishing	318	385	438	370	416	30.82%
Automotive Technology & Outdoor Powered Equipment	2,212	2,524	2,660	2,426	2,412	9.04%
Building Construction Technology	1,414	1,780	1,693	1,497	1,446	2.26%
Child Care & Development	1,303	1,567	1,365	1,208	1,082	-16.96%
Criminal Justice	2,735	3,261	3,518	3,133	2,979	8.92%
Fire Protection Technology	1,155	1,082	1,070	1,041	810	-29.87%
Heating, AC, & Refrigeration Technology	1,028	1,056	1,096	1,126	1,090	6.03%
Human Services	2,566	1,336	1,451	1,388	1,401	-45.40%
Jewelry	452	452	524	576	564	24.78%
Music	1,813	1,915	1,934	2,048	2,116	16.71%
Music Business, Performance & Technology	1,546	1,697	1,670	1,643	1,540	-0.39%
Paralegal	924	1,050	1,074	1,047	1,098	18.83%
Photographic Technology	1,642	1,788	1,785	1,516	1,407	-14.31%
Radio-TV-Film	1,110	1,146	1,209	1,293	1,392	25.41%
Welding Technology	1,416	1,620	1,676	1,720	1,724	21.75%
TOTAL	21,634	24,548	25,201	23,913	23,348	7.92%
Arts & Humanities	Fall 2009	Fall 2010	Fall 2011	Fall 2012	Fall 2013	09-13 % chg
Arabic	185	184	245	153	164	-11.35%
Art	5,691	6,969	7,518	7,020	6,582	15.66%
Chinese	154	138	128	158	162	5.19%
Creative Writing	618	702	687	696	630	1.94%
Dance	271	357	399	379	412	52.03%
Drama	1,480	1,667	1,641	1,583	1,443	-2.50%
English for Speakers of Other Languages	2,820	2,922	3,177	2,991	2,340	-17.02%
French	1,593	1,582	1,488	1,417	1,267	-20.46%
German	522	685	548	543	421	-19.35%
Humanities	1,281	1,500	2,052	1,920	1,899	48.24%
Japanese	962	1,074	1,023	808	764	-20.58%
Latin	397	391	356	333	216	-45.59%
Philosophy	6,486	7,173	6,963	6,885	6,582	1.48%
Religion	480	387	339	357	252	-47.50%
Russian	257	246	205	205	161	-37.35%
Spanish	11,633	12,529	11,684	10,162	9,393	-19.26%
TOTAL	34,830	38,506	38,453	35,610	32,688	-6.15%

NOTE: American Sign Language Interpreter Training began in Fall 2010. Disciplines are listed under the current (2013-14) dean area; they may have been listed under another dean area in previous years.

Source: Fall 12th Class Day Data

**Semester Credit Hours (continued)
Fall 2009 - 2013**

Business Studies	Fall 2009	Fall 2010	Fall 2011	Fall 2012	Fall 2013	09-13 % chg
Accounting	4,926	5,446	5,272	5,131	5,339	8.38%
Business & Technical Communications	584	771	1,114	1,182	1,284	119.86%
Culinary Arts	691	890	1,010	1,038	1,044	51.09%
Financial Management	441	534	432	304	376	-14.74%
Hospitality Management	618	714	717	669	675	9.22%
International Business	279	294	294	159	111	-60.22%
Management	4,479	4,800	4,440	3,819	3,687	-17.68%
Marketing	1,278	1,608	1,353	1,086	1,182	-7.51%
Meeting & Events Planning	123	150	108	120	60	-51.22%
Office Administration	1,260	1,375	1,214	1,192	985	-21.83%
Real Estate	937	1,086	869	767	659	-29.67%
Travel & Tourism	93	105	126	117	60	-35.48%
TOTAL	15,709	17,773	16,949	15,584	15,462	-1.57%

Communications	Fall 2009	Fall 2010	Fall 2011	Fall 2012	Fall 2013	09-13 % chg
English	32,901	35,406	36,135	36,426	38,151	15.96%
Journalism	729	828	867	870	750	2.88%
Reading - Developmental	3,801	4,452	4,812	3,708	2,748	-27.70%
Speech	10,113	10,518	11,028	11,145	11,328	12.01%
Study Skills	203	274	268	295	241	18.72%
Writing - Developmental	2,373	2,802	3,025	2,990	2,706	14.03%
TOTAL	50,120	54,280	56,135	55,434	55,924	11.58%

NOTE: Disciplines are listed under the current (2013-14) dean area; they may have been listed under another dean area in previous years.

Source: Fall 12th Class Day Data

Semester Credit Hours (continued)
Fall 2009 - 2013

Computer Studies & Advanced Technology	Fall 2009	Fall 2010	Fall 2011	Fall 2012	Fall 2013	09-13 % chg
Architectural & Engineering CAD	2,164	2,156	2,048	1,956	1,988	-8.13%
Computer Information Technology	4,465	4,893	4,947	4,933	4,875	9.18%
Computer Science	5,018	5,332	5,181	4,984	4,780	-4.74%
Electronics & Advanced Technologies	1,321	1,404	1,421	1,303	1,155	-12.57%
Land Surveying Technology/Geomatics	123	53	124	96	105	-14.63%
Visual Communication	5,203	5,648	5,521	5,511	5,415	4.07%
TOTAL	18,294	19,486	19,242	18,783	18,318	0.13%

Health Sciences	Fall 2009	Fall 2010	Fall 2011	Fall 2012	Fall 2013	09-13 % chg
Allied Health Science	2,485	3,082	2,965	2,739	2,521	1.45%
Dental Hygiene	376	340	378	335	357	-5.05%
Diagnostic Medical Imaging Radiology	855	888	978	1,004	1,046	22.34%
Emergency Medical Services Professions	866	912	1,015	1,022	1,015	17.21%
Health & Kinesiology	3,319	3,560	3,537	2,938	2,494	-24.86%
Health Information Technology	350	384	470	456	559	59.71%
Medical Lab Technology	291	393	516	481	438	50.52%
Nursing - Professional	4,673	5,116	5,045	4,373	4,409	-5.65%
Nursing - Vocational	1,249	1,052	1,382	1,196	989	-20.82%
Occupational Therapy Assistant	323	297	340	310	303	-6.19%
Personal Fitness Trainer	132	152	169	146	160	21.21%
Pharmacy Technician	399	415	394	444	425	6.52%
Physical Therapist Assistant	444	434	420	451	528	18.92%
Sonography	525	500	554	479	454	-13.52%
Surgical Technology	312	398	398	398	452	44.87%
TOTAL	16,599	17,923	18,561	16,772	16,150	-2.70%

NOTE: Disciplines are listed under the current (2013-14) dean area; they may have been listed under another dean area in previous years.

Source: Fall 12th Class Day Data

**Semester Credit Hours (continued)
Fall 2009 - 2013**

Math & Sciences	Fall 2009	Fall 2010	Fall 2011	Fall 2012	Fall 2013	09-13 % chg
Astronomy	961	1,197	1,304	1,117	1,181	22.89%
Biology	18,316	20,389	20,444	19,884	19,450	6.19%
Biotechnology	104	242	209	257	163	56.73%
Chemistry	6,351	7,925	8,173	7,518	7,147	12.53%
Engineering	271	398	372	394	374	38.01%
Environmental Science & Technology	814	827	737	600	604	-25.80%
Geology	2,380	2,440	2,200	1,745	1,858	-21.93%
Mathematics	22,840	24,722	24,128	24,359	23,359	2.27%
Mathematics - Developmental	23,818	26,485	25,710	23,972	19,520	-18.05%
Physics	3,655	4,246	4,092	4,148	3,816	4.40%
TOTAL	79,510	88,871	87,369	83,994	77,472	-2.56%
Social & Behavioral Sciences	Fall 2009	Fall 2010	Fall 2011	Fall 2012	Fall 2013	09-13 % chg
Anthropology	2,868	3,174	2,910	2,391	2,238	-21.97%
Economics	7,824	7,740	7,218	7,260	7,275	-7.02%
Education Instruction	729	963	558	540	498	-31.69%
Geography	2,469	2,665	2,125	1,985	1,779	-27.95%
Geographic Information Systems	.	175	175	219	265	.
Government	22,197	22,989	22,083	21,540	22,854	2.96%
History	24,282	25,758	24,999	24,024	21,996	-9.41%
Human Development	2,243	2,614	3,018	2,243	1,951	-13.02%
Military Science	54	54	46	40	30	-44.44%
Psychology	14,199	15,993	16,233	15,039	13,917	-1.99%
Sociology	5,847	7,083	6,990	5,856	5,658	-3.23%
TOTAL	82,712	89,208	86,355	81,137	78,461	-5.14%
GRAND TOTAL (Semester Credit Hours)	319,408	350,595	348,265	331,227	317,823	-0.50%

NOTE: Geographic Information Systems began in Fall 2009; previously, enrollments were reported under Geography until Fall 2010. Disciplines are listed under the current (2013-14) dean area; they may have been listed under another dean area in previous years.

Source: Fall 12th Class Day Data

**Contact Hours (continued)
Fall 2009 - 2013**

Applied Technologies, Multimedia, & Public Services	Fall 2009	Fall 2010	Fall 2011	Fall 2012	Fall 2013	09-13 % chg
American Sign Language Interpreter Training	.	46,736	50,368	46,752	41,104	.
Auto Body Collision Repair & Refinishing	7,840	9,344	11,424	9,792	11,104	41.63%
Automotive Technology & Outdoor Powered Equipment	55,872	62,560	66,432	60,224	61,248	9.62%
Building Construction Technology	32,720	40,320	38,624	33,312	32,336	-1.17%
Child Care & Development	29,376	36,720	30,480	26,720	23,888	-18.68%
Music Business, Performance & Technology	33,664	36,416	36,048	35,760	32,960	-2.09%
Criminal Justice	45,488	54,672	57,696	53,520	49,648	9.15%
Fire Protection Technology	24,816	22,896	22,496	22,096	17,568	-29.21%
Heating, AC, & Refrigeration Technology	25,632	26,464	27,424	28,064	27,200	6.12%
Human Services	55,648	24,192	25,392	26,992	26,880	-51.70%
Jewelry	10,848	10,848	12,576	13,824	13,536	24.78%
Music	37,704	40,968	38,608	39,560	40,192	6.60%
Paralegal	17,184	19,440	21,024	19,632	21,408	24.58%
Photographic Technology	63,472	71,296	72,848	62,864	58,144	-8.39%
Radio-TV-Film	23,808	24,464	26,432	27,344	29,392	23.45%
Welding Technology	33,984	38,880	40,352	41,408	41,504	22.13%
TOTAL	498,056	566,216	578,224	547,864	528,112	6.03%

Arts & Humanities	Fall 2009	Fall 2010	Fall 2011	Fall 2012	Fall 2013	09-13 % chg
Arabic	2,960	2,944	3,920	2,448	2,624	-11.35%
Art	125,280	149,568	161,232	145,776	133,632	6.67%
Chinese	2,464	2,208	2,048	2,528	2,592	5.19%
Creative Writing	9,888	11,232	10,992	11,136	10,080	1.94%
Dance	10,160	12,320	12,992	11,936	11,872	16.85%
Drama	29,152	33,072	31,296	29,824	26,464	-9.22%
English for Speakers of Other Languages	60,352	62,480	67,968	64,016	50,112	-16.97%
French	25,488	25,312	23,808	22,672	20,272	-20.46%
German	8,352	10,960	8,768	8,688	6,736	-19.35%
Humanities	20,496	24,000	32,832	30,720	30,384	48.24%
Japanese	15,392	17,184	16,368	12,928	12,224	-20.58%
Latin	6,352	6,256	5,696	5,328	3,456	-45.59%
Philosophy	103,776	114,768	111,408	110,160	105,312	1.48%
Religion	7,680	6,192	5,424	5,712	4,032	-47.50%
Russian	4,112	3,936	3,280	3,280	2,576	-37.35%
Spanish	186,256	200,640	186,944	162,592	150,288	-19.31%
TOTAL	618,160	683,072	684,976	629,744	572,656	-7.36%

NOTE: American Sign Language Interpreter Training began in Fall 2010. Disciplines are listed under the current (2013-14) dean area; they may have been listed under another dean area in previous years.

Source: Fall 12th Class Day Data

**Contact Hours (continued)
Fall 2009 - 2013**

Business Studies	Fall 2009	Fall 2010	Fall 2011	Fall 2012	Fall 2013	09-13 % chg
Accounting	98,864	110,656	107,744	104,448	107,696	8.93%
Business & Technical Communications	9,632	12,336	18,400	18,912	20,544	113.29%
Culinary Arts	16,720	21,488	25,312	26,432	30,144	80.29%
Financial Management	7,056	8,544	6,912	4,864	6,016	-14.74%
Hospitality Management	11,696	14,768	13,952	13,344	12,128	3.69%
International Business	4,464	4,704	4,704	2,544	1,776	-60.22%
Management	73,104	77,760	71,520	61,584	58,992	-19.30%
Marketing	20,448	25,728	21,648	17,376	18,912	-7.51%
Meeting & Events Planning	1,968	2,400	1,728	1,920	960	-51.22%
Office Administration	30,288	32,272	28,656	28,544	23,776	-21.50%
Real Estate	14,992	17,376	13,904	12,272	10,544	-29.67%
Travel & Tourism	1,632	1,792	2,240	2,048	960	-41.18%
TOTAL	290,864	329,824	316,720	294,288	292,448	0.54%

Communications	Fall 2009	Fall 2010	Fall 2011	Fall 2012	Fall 2013	09-13 % chg
English	526,416	566,496	578,160	582,816	610,416	15.96%
Journalism	12,064	13,664	14,496	14,544	12,416	2.92%
Reading - Developmental	70,544	82,704	89,264	67,712	50,352	-28.62%
Speech	161,808	168,288	176,448	178,320	181,248	12.01%
Study Skills	3,248	4,384	4,288	4,720	3,856	18.72%
Writing - Developmental	45,088	53,264	56,528	55,584	51,152	13.45%
TOTAL	819,168	888,800	919,184	903,696	909,440	11.02%

NOTE: Disciplines are listed under the current (2013-14) dean area; they may have been listed under another dean area in previous years.

Source: Fall 12th Class Day Data

**Contact Hours (continued)
Fall 2009 - 2013**

Computer Studies & Advanced Technology	Fall 2009	Fall 2010	Fall 2011	Fall 2012	Fall 2013	09-13 % chg
Architectural & Engineering CAD	51,936	51,744	49,152	46,944	47,712	-8.13%
Computer Information Technology	101,632	110,912	113,440	112,512	112,240	10.44%
Computer Science	107,872	114,624	111,424	107,264	102,944	-4.57%
Electronics & Advanced Technologies	32,096	34,240	34,912	31,792	27,328	-14.86%
Land Surveying Technology/Geomatics	3,120	1,808	2,656	1,776	1,968	-36.92%
Visual Communication	128,608	141,840	138,816	136,816	135,632	5.46%
TOTAL	425,264	455,168	450,400	437,104	427,824	0.60%

Health Sciences	Fall 2009	Fall 2010	Fall 2011	Fall 2012	Fall 2013	09-13 % chg
Allied Health Science	39,760	49,312	47,440	43,824	40,336	1.45%
Dental Hygiene	13,344	12,256	13,536	12,096	12,784	-4.20%
Diagnostic Medical Imaging Radiology	27,568	26,048	31,968	32,208	32,848	19.15%
Emergency Medical Services Professions	30,338	30,691	35,708	34,344	34,387	13.35%
Health & Kinesiology	119,664	128,448	129,408	104,832	88,032	-26.43%
Health Information Technology	6,864	7,392	10,784	8,960	10,624	54.78%
Medical Lab Technology	11,952	16,640	21,760	20,096	18,208	52.34%
Nursing - Professional	161,872	175,712	174,368	150,640	151,680	-6.30%
Nursing - Vocational	37,936	32,208	44,320	35,904	30,608	-19.32%
Occupational Therapy Assistant	10,640	9,632	11,200	10,096	9,904	-6.92%
Personal Fitness Trainer	2,592	2,880	3,216	2,784	3,072	18.52%
Pharmacy Technologist	10,352	10,224	9,344	10,208	11,152	7.73%
Physical Therapist Assistant	14,800	13,520	13,392	14,528	16,992	14.81%
Sonography	19,152	19,552	20,768	19,168	17,664	-7.77%
Surgical Technology	10,688	13,232	13,232	13,232	14,816	38.62%
TOTAL	517,522	547,747	580,444	512,920	493,107	-4.72%

NOTE: Disciplines are listed under the current (2013-14) dean area; they may have been listed under another dean area in previous years.

Source: Fall 12th Class Day Data

**Contact Hours (continued)
Fall 2009 - 2013**

Math & Sciences	Fall 2009	Fall 2010	Fall 2011	Fall 2012	Fall 2013	09-13 % chg
Astronomy	16,848	21,072	23,424	20,400	21,744	29.06%
Biology	402,048	450,512	448,816	436,672	425,312	5.79%
Biotechnology	3,056	7,488	5,360	6,960	3,888	27.23%
Chemistry	152,400	189,744	195,792	180,192	171,216	12.35%
Engineering	4,336	6,368	5,952	6,304	6,640	53.14%
Environmental Science & Technology	13,536	13,488	13,200	9,792	10,080	-25.53%
Geology	48,960	50,208	45,984	36,432	39,072	-20.20%
Mathematics	365,552	395,808	386,208	389,920	373,840	2.27%
Mathematics - Developmental	510,160	565,120	546,784	509,776	414,896	-18.67%
Physics	87,216	101,472	98,208	99,552	91,584	5.01%
TOTAL	1,604,112	1,801,280	1,769,728	1,696,000	1,558,272	-2.86%
Social & Behavioral Sciences	Fall 2009	Fall 2010	Fall 2011	Fall 2012	Fall 2013	09-13 % chg
Anthropology	45,888	50,784	46,704	38,640	36,336	-20.82%
Economics	125,184	123,840	115,488	116,160	116,400	-7.02%
Education Instruction	11,664	15,408	8,928	8,640	7,968	-31.69%
Geography	41,552	44,208	36,144	34,224	30,864	-25.72%
Geographic Information Systems	.	4,240	4,144	5,488	6,320	.
Government	355,792	368,784	354,288	345,536	366,432	2.99%
History	388,512	412,128	399,984	384,384	351,936	-9.41%
Human Development	43,800	50,352	58,392	42,576	36,408	-16.88%
Military Science	1,296	1,296	1,104	960	720	-44.44%
Psychology	227,328	255,936	259,728	240,624	222,672	-2.05%
Sociology	93,552	113,424	111,840	93,696	90,528	-3.23%
TOTAL	1,334,568	1,440,400	1,396,744	1,310,928	1,266,584	-5.09%
GRAND TOTAL (Contact Hours)	6,107,714	6,712,507	6,696,420	6,332,544	6,048,443	-0.97%

NOTE: Geographic Information Systems began in Fall 2009; previously, enrollments were reported under Geography until Fall 2010. Disciplines are listed under the current (2013-14) dean area; they may have been listed under another dean area in previous years.

Source: Fall 12th Class Day Data

**Distance Learning Course Enrollment and Contact Hours
Fall 2009 - 2013**

	Fall 2009	Fall 2010	Fall 2011	Fall 2012	Fall 2013	09-13 % chg
COURSE ENROLLMENT						
Directed Study (DIR)	216	237	208	163	.	.
Hybrid (HYD)	423	931	1,066	1,366	1,444	241.37%
Instructional Television (ITV)	804	719	445	222	51	-93.66%
Online (ONL)	11,447	12,096	12,897	12,783	12,933	12.98%
Print-Based (PRN)	336	386	378	278	194	-42.26%
Unknown ¹	13	.
TOTAL	13,226	14,369	14,994	14,812	14,635	10.65%

	Fall 2009	Fall 2010	Fall 2011	Fall 2012	Fall 2013	09-13 % chg
CONTACT HOURS						
Directed Study (DIR)	19,552	21,312	20,912	18,496	.	.
Hybrid (HYD)	19,776	48,368	55,280	71,104	78,736	298.14%
Instructional Television (ITV)	38,528	35,152	20,640	10,656	2,448	-93.65%
Online (ONL)	589,152	618,200	660,584	648,728	654,448	11.08%
Print-Based (PRN)	16,128	18,528	18,144	13,344	9,312	-42.26%
Unknown ¹	624	.
TOTAL	683,136	741,560	775,560	762,328	745,568	9.14%

¹ Delivery method not listed.

NOTE: Refer to Useful Terms or Glossary for definitions of terms.

Source: Fall 12th Class Day Data

**Student Headcount, Course Enrollment, Contact Hours, and Semester
Credit Hours by Location
Spring 2014**

Location	Student Headcount	Course Enrollment	Contact Hours	Semester Credit Hours
Cypress Creek Campus	4,523	8,655	480,696	25,472
Eastview Campus	3,536	6,589	474,891	18,726
Elgin Campus	320	474	24,648	1,382
Hays Campus	980	1,735	91,232	5,155
Northridge Campus	8,627	16,676	1,003,840	50,241
Pinnacle Campus	2,161	4,069	220,384	12,282
Rio Grande Campus	7,126	13,549	803,968	42,193
Riverside Campus	5,840	10,716	644,040	32,808
Round Rock Campus	4,544	8,958	553,616	26,795
South Austin	2,995	4,775	266,616	14,475
Distance Learning	9,164	14,132	729,440	42,538
Centers	1,071	1,741	90,272	5,287
Site-Based Instruction	3,751	5,699	331,488	17,131

NOTE: Refer to Useful Terms or Glossary for definitions of terms. Students who attend multiple locations are counted once at each location. Students who enroll in multiple courses are counted once for each course.

Source: Spring 12th Class Day Data

Course Enrollment
Spring 2010 - 2014

Applied Technologies, Multimedia, & Public Services	Spring 2010	Spring 2011	Spring 2012	Spring 2013	Spring 2014	10-14 % chg
American Sign Language Interpreter Training	.	546	579	519	534	.
Auto Body Collision & Refinishing	89	117	129	113	127	42.70%
Automotive Technology & Outdoor Powered Equipment	570	716	650	606	624	9.47%
Building Construction Technology	418	484	461	390	417	-0.24%
Child Care & Development	470	432	422	419	379	-19.36%
Commercial Music Management	543	579	533	524	506	-6.81%
Criminal Justice	982	1,166	1,201	1,092	949	-3.36%
Fire Protection Technology	316	335	345	326	239	-24.37%
Heating, AC, & Refrigeration Technology	272	323	313	271	286	5.15%
Human Services	826	495	484	432	463	-43.95%
Jewelry	121	135	153	143	147	21.49%
Music	834	927	883	914	858	2.88%
Paralegal	332	368	388	390	341	2.71%
Photographic Technology	577	621	566	461	461	-20.10%
Radio-TV-Film	442	487	518	492	546	23.53%
Welding Technology	345	419	423	433	444	28.70%
TOTAL	7,137	8,150	8,048	7,525	7,321	2.58%
Arts & Humanities	Spring 2010	Spring 2011	Spring 2012	Spring 2013	Spring 2014	10-14 % chg
Arabic	30	37	30	31	30	0.00%
Art	2,142	2,458	2,369	2,309	2,077	-3.03%
Chinese	30	20	26	30	38	26.67%
Creative Writing	236	249	247	218	198	-16.10%
Dance	205	206	228	179	219	6.83%
Drama	492	623	568	481	599	21.75%
English for Speakers of Other Languages	909	1,078	1,143	836	775	-14.74%
French	379	359	355	301	269	-29.02%
German	136	137	123	122	94	-30.88%
Humanities	479	675	669	609	599	25.05%
Japanese	210	184	198	192	183	-12.86%
Latin	30	33	58	54	43	43.33%
Philosophy	2,375	2,687	2,495	2,329	2,144	-9.73%
Religion	148	111	140	56	94	-36.49%
Russian	32	19	23	45	36	12.50%
Spanish	2,559	2,774	2,437	2,192	1,901	-25.71%
TOTAL	10,392	11,650	11,109	9,984	9,299	-10.52%

NOTE: American Sign Language Interpreter Training began in Fall 2010. Disciplines are listed under the current (2013-14) dean area; they may have been listed under another dean area in previous years.

Source: Spring 12th Class Day Data

**Course Enrollment (continued)
Spring 2010 - 2014**

Business Studies	Spring 2010	Spring 2011	Spring 2012	Spring 2013	Spring 2014	10-14 % chg
Accounting	1,727	1,938	1,823	1,850	1,876	8.63%
Business & Technical Communications	291	332	395	447	446	53.26%
Culinary Arts	295	349	392	332	333	12.88%
Financial Management	187	187	133	119	107	-42.78%
Hospitality Management	230	280	260	273	248	7.83%
International Business	115	118	66	54	43	-62.61%
Management	1,669	1,536	1,521	1,319	1,176	-29.54%
Marketing	552	597	487	406	401	-27.36%
Meeting & Events Planning	47	37	47	24	28	-40.43%
Office Administration	523	561	494	426	381	-27.15%
Real Estate	290	312	258	280	352	21.38%
Travel & Tourism	23	26	32	20	30	30.43%
TOTAL	5,949	6,273	5,908	5,550	5,421	-8.88%

Communications	Spring 2010	Spring 2011	Spring 2012	Spring 2013	Spring 2014	10-14 % chg
English	10,232	10,876	10,391	10,260	10,381	1.46%
Journalism	297	296	277	268	259	-12.79%
Reading - Developmental	1,148	1,324	1,303	783	732	-36.24%
Speech	3,281	3,508	3,462	3,625	3,520	7.28%
Study Skills	69	81	109	68	41	-40.58%
Writing - Developmental	852	1,178	1,187	1,009	746	-12.44%
TOTAL	15,879	17,263	16,729	16,013	15,679	-1.26%

NOTE: Disciplines are listed under the current (2013-14) dean area; they may have been listed under another dean area in previous years.

Source: Spring 12th Class Day Data

**Course Enrollment (continued)
Spring 2010 - 2014**

Computer Studies & Advanced Technology	Spring 2010	Spring 2011	Spring 2012	Spring 2013	Spring 2014	10-14 % chg
Architectural & Engineering CAD	559	538	560	504	488	-12.70%
Computer Information Technology	1,549	1,720	1,678	1,739	1,696	9.49%
Computer Science	1,761	1,826	1,862	1,627	1,646	-6.53%
Electronics & Advanced Technology	368	429	370	337	317	-13.86%
Land Surveying Technology/Geomatics	29	47	42	22	29	0.00%
Visual Communication	1,482	1,559	1,510	1,501	1,450	-2.16%
TOTAL	5,748	6,119	6,022	5,730	5,626	-2.12%

Health Sciences	Spring 2010	Spring 2011	Spring 2012	Spring 2013	Spring 2014	10-14 % chg
Allied Health Sciences	1,165	1,300	1,273	1,130	997	-14.42%
Dental Hygiene	99	96	99	91	98	-1.01%
Diagnostic Medical Imaging Radiology	195	227	249	252	255	30.77%
Emergency Medical Services Professions	361	359	412	394	392	8.59%
Health & Kinesiology	2,773	2,961	2,731	2,248	1,855	-33.10%
Health Information Technology	165	165	159	148	155	-6.06%
Medical Lab Technology	103	132	133	140	138	33.98%
Nursing - Professional	2,154	2,241	1,979	1,830	1,940	-9.94%
Nursing - Vocational	434	503	453	430	407	-6.22%
Occupational Therapy Assistant	145	146	154	151	135	-6.90%
Personal Fitness Trainer	27	41	49	55	65	140.74%
Pharmacy Technology	199	191	190	198	203	2.01%
Physical Therapist Assistant	101	114	132	133	144	42.57%
Sonography	102	90	103	82	77	-24.51%
Surgical Technology	94	98	102	112	94	0.00%
TOTAL	8,117	8,664	8,218	7,394	6,955	-14.32%

NOTE: Disciplines are listed under the current (2013-14) dean area; they may have been listed under another dean area in previous years.

Source: Spring 12th Class Day Data

Course Enrollment (continued)
Spring 2010 - 2014

Math & Sciences	Spring 2010	Spring 2011	Spring 2012	Spring 2013	Spring 2014	10-14 % chg
Astronomy	387	458	406	389	373	-3.62%
Biology	5,658	6,767	6,366	6,025	6,205	9.67%
Biotechnology	62	75	77	72	87	40.32%
Chemistry	3,743	4,297	4,218	3,551	3,351	-10.47%
Engineering	112	130	157	177	161	43.75%
Environmental Science & Technology	318	318	247	222	233	-26.73%
Geology	739	711	624	460	521	-29.50%
Mathematics	6,565	7,305	7,060	6,505	6,972	6.20%
Mathematics - Developmental	8,043	8,737	8,577	7,069	5,530	-31.24%
Physics	1,077	1,209	1,045	1,058	1,019	-5.39%
TOTAL	26,704	30,007	28,777	25,528	24,452	-8.43%
Social & Behavioral Sciences	Spring 2010	Spring 2011	Spring 2012	Spring 2013	Spring 2014	10-14 % chg
Anthropology	974	1,051	768	840	634	-34.91%
Economics	2,755	2,563	2,197	2,108	2,149	-22.00%
Educational Instruction	262	242	209	187	190	-27.48%
Geography	863	842	671	587	486	-43.68%
Geographic Information Systems	.	47	60	72	99	.
Government	6,853	6,987	6,582	6,707	6,575	-4.06%
History	7,819	8,166	7,717	6,898	6,468	-17.28%
Human Development	1,171	1,268	1,466	829	914	-21.95%
Military Science	30	27	17	9	5	-83.33%
Psychology	4,524	5,053	5,080	4,501	3,977	-12.09%
Sociology	2,275	2,538	2,110	1,914	1,504	-33.89%
TOTAL	27,526	28,784	26,877	24,652	23,001	-16.44%
GRAND TOTAL (Course Enrollment)	107,452	116,910	111,688	102,376	97,754	-9.03%

NOTE: Geographic Information Systems began in Fall 2009; previously, enrollments were reported under Geography until Fall 2010. Disciplines are listed under the current (2013-14) dean area; they may have been listed under another dean area in previous years.

Source: Spring 12th Class Day Data

**Semester Credit Hours
Spring 2010 - 2014**

Applied Technologies, Multimedia, & Public Services	Spring 2010	Spring 2011	Spring 2012	Spring 2013	Spring 2014	10-14 % chg
American Sign Language Interpreter Training	.	2,007	2,112	1,896	1,926	.
Auto Body Collision & Refinishing	299	411	439	382	430	43.81%
Automotive Technology & Outdoor Powered Equipment	2,280	2,864	2,600	2,416	2,485	8.99%
Building Construction Technology	1,578	1,723	1,656	1,434	1,533	-2.85%
Child Care & Development	1,533	1,371	1,306	1,243	1,142	-25.51%
Commercial Music Management	1,584	1,717	1,597	1,583	1,535	-3.09%
Criminal Justice	2,997	3,575	3,668	3,362	2,909	-2.94%
Fire Protection Technology	1,103	1,160	1,200	1,118	842	-23.66%
Heating, AC, & Refrigeration Technology	1,054	1,248	1,202	1,060	1,118	6.07%
Human Services	2,801	1,518	1,486	1,338	1,434	-48.80%
Jewelry	484	540	612	572	588	21.49%
Music	1,849	1,934	2,047	2,134	2,076	12.28%
Paralegal	996	1,104	1,164	1,170	1,023	2.71%
Photographic Technology	1,793	1,920	1,737	1,390	1,389	-22.53%
Radio-TV-Film	1,326	1,461	1,554	1,476	1,638	23.53%
Welding Technology	1,380	1,676	1,692	1,732	1,776	28.70%
TOTAL	23,057	26,229	26,072	24,306	23,844	3.41%
Arts & Humanities	Spring 2010	Spring 2011	Spring 2012	Spring 2013	Spring 2014	10-14 % chg
Arabic	128	155	134	141	130	1.56%
Art	6,426	7,374	7,107	6,927	6,231	-3.03%
Chinese	128	100	110	136	164	28.13%
Creative Writing	708	747	741	654	594	-16.10%
Dance	349	361	432	363	456	30.66%
Drama	1,462	1,853	1,686	1,427	1,769	21.00%
English for Speakers of Other Languages	2,727	3,234	3,429	2,508	2,325	-14.74%
French	1,771	1,703	1,657	1,407	1,275	-28.01%
German	656	655	599	592	452	-31.10%
Humanities	1,437	2,025	2,007	1,827	1,797	25.05%
Japanese	984	858	904	876	847	-13.92%
Latin	132	147	278	246	215	62.88%
Philosophy	7,125	8,061	7,485	6,987	6,432	-9.73%
Religion	444	333	420	168	282	-36.49%
Russian	146	83	103	215	180	23.29%
Spanish	11,939	13,036	11,483	10,418	8,953	-25.01%
TOTAL	36,562	40,725	38,575	34,892	32,102	-12.20%

NOTE: American Sign Language Interpreter Training began in Fall 2010. Disciplines are listed under the current (2013-14) dean area; they may have been listed under another dean area in previous years.

Source: Spring 12th Class Day Data

**Semester Credit Hours (continued)
Spring 2010 - 2014**

Business Studies	Spring 2010	Spring 2011	Spring 2012	Spring 2013	Spring 2014	10-14 % chg
Accounting	5,283	5,901	5,546	5,627	5,702	7.93%
Business & Technical Communications	898	1,013	1,213	1,369	1,393	55.12%
Culinary Arts	778	941	1,072	914	918	17.99%
Financial Management	561	561	399	355	305	-45.63%
Hospitality Management	690	840	780	819	744	7.83%
International Business	345	354	198	162	129	-62.61%
Management	5,007	4,588	4,563	3,957	3,528	-29.54%
Marketing	1,656	1,791	1,461	1,218	1,203	-27.36%
Meeting & Events Planning	141	111	141	72	84	-40.43%
Office Administration	1,335	1,465	1,273	1,104	979	-26.67%
Real Estate	957	1,025	834	730	916	-4.28%
Travel & Tourism	69	78	96	60	90	30.43%
TOTAL	17,720	18,668	17,576	16,387	15,991	-9.76%

Communications	Spring 2010	Spring 2011	Spring 2012	Spring 2013	Spring 2014	10-14 % chg
English	30,696	32,628	31,173	30,780	31,143	1.46%
Journalism	888	888	831	804	777	-12.50%
Reading - Developmental	3,972	3,972	3,909	2,349	2,196	-44.71%
Speech	9,843	10,524	10,386	10,875	10,560	7.28%
Study Skills	186	220	307	193	123	-33.87%
Writing - Developmental	2,488	3,300	3,273	2,741	2,100	-15.59%
TOTAL	47,543	51,532	49,879	47,742	46,899	-1.35%

NOTE: Disciplines are listed under the current (2013-14) dean area; they may have been listed under another dean area in previous years.

Source: Spring 12th Class Day Data

**Semester Credit Hours (continued)
Spring 2010 - 2014**

Computer Studies & Advanced Technology	Spring 2010	Spring 2011	Spring 2012	Spring 2013	Spring 2014	10-14 % chg
Architectural & Engineering CAD	2,236	2,152	2,240	2,016	1,952	-12.70%
Computer Information Technology	4,930	5,441	5,309	5,475	5,350	8.52%
Computer Science	5,360	5,563	5,671	4,967	5,023	-6.29%
Electronics & Advanced Technology	1,336	1,552	1,388	1,225	1,175	-12.05%
Land Surveying Technology/Geomatics	89	141	127	66	87	-2.25%
Visual Communication	5,596	5,780	5,635	5,598	5,418	-3.18%
TOTAL	19,547	20,629	20,370	19,347	19,005	-2.77%

Health Sciences	Spring 2010	Spring 2011	Spring 2012	Spring 2013	Spring 2014	10-14 % chg
Allied Health Sciences	2,792	3,211	3,119	2,715	2,398	-14.11%
Dental Hygiene	214	210	214	198	210	-1.87%
Diagnostic Medical Imaging Radiology	555	639	705	716	713	28.47%
Emergency Medical Services Professions	961	967	1,050	1,023	1,026	6.76%
Health & Kinesiology	3,655	3,810	3,569	2,993	2,392	-34.56%
Health Information Technology	468	463	453	413	424	-9.40%
Medical Lab Technology	274	400	366	391	366	33.58%
Nursing - Professional	5,061	5,202	4,893	4,480	4,779	-5.57%
Nursing - Vocational	1,376	1,552	1,363	1,345	1,223	-11.12%
Occupational Therapy Assistant	344	352	365	362	320	-6.98%
Personal Fitness Trainer	91	146	168	188	222	143.96%
Pharmacy Technology	577	536	541	564	592	2.60%
Physical Therapist Assistant	340	382	440	440	479	40.88%
Sonography	371	290	320	257	239	-35.58%
Surgical Technology	342	370	390	416	365	6.73%
TOTAL	17,421	18,530	17,956	16,501	15,748	-9.60%

NOTE: Disciplines are listed under the current (2013-14) dean area; they may have been listed under another dean area in previous years.

Source: Spring 12th Class Day Data

**Semester Credit Hours (continued)
Spring 2010 - 2014**

Math & Sciences	Spring 2010	Spring 2011	Spring 2012	Spring 2013	Spring 2014	10-14 % chg
Astronomy	1,231	1,461	1,296	1,233	1,183	-3.90%
Biology	17,198	20,449	19,379	18,460	18,954	10.21%
Biotechnology	202	243	237	236	269	33.17%
Chemistry	7,527	8,613	8,458	7,109	6,711	-10.84%
Engineering	271	317	367	416	387	42.80%
Environmental Science & Technology	923	930	719	668	683	-26.00%
Geology	2,564	2,496	2,212	1,624	1,862	-27.38%
Mathematics	21,474	23,802	22,972	21,209	22,696	5.69%
Mathematics - Developmental	23,460	25,373	24,872	20,654	16,133	-31.23%
Physics	4,271	4,796	4,180	4,232	4,076	-4.57%
TOTAL	79,121	88,480	84,692	75,841	72,954	-7.79%
Social & Behavioral Sciences	Spring 2010	Spring 2011	Spring 2012	Spring 2013	Spring 2014	10-14 % chg
Anthropology	2,922	3,153	2,304	2,520	1,902	-34.91%
Economics	8,265	7,689	6,591	6,324	6,447	-22.00%
Educational Instruction	786	726	627	561	570	-27.48%
Geography	2,665	2,604	2,100	1,853	1,516	-43.11%
Geographic Information Systems	.	179	209	259	376	.
Government	20,559	20,961	19,746	20,121	19,725	-4.06%
History	23,457	24,498	23,151	20,694	19,404	-17.28%
Human Development	2,133	2,190	2,382	1,497	1,532	-28.18%
Military Science	60	54	34	18	10	-83.33%
Psychology	13,572	15,159	15,240	13,503	11,931	-12.09%
Sociology	6,825	7,614	6,330	5,742	4,512	-33.89%
TOTAL	81,244	84,827	78,714	73,092	67,925	-16.39%
GRAND TOTAL (Semester Credit Hours)	322,215	349,620	333,834	308,108	294,468	-8.61%

NOTE: Geographic Information Systems began in Fall 2009; previously, enrollments were reported under Geography until Fall 2010. Disciplines are listed under the current (2013-14) dean area; they may have been listed under another dean area in previous years.

Source: Spring 12th Class Day Data

**Contact Hours
Spring 2010 - 2014**

Applied Technologies, Multimedia, & Public Services	Spring 2010	Spring 2011	Spring 2012	Spring 2013	Spring 2014	10-14 % chg
American Sign Language Interpreter Training	.	49,120	52,400	47,360	42,512	.
Auto Body Collision & Refinishing	8,784	10,464	12,944	10,160	11,504	30.97%
Automotive Technology & Outdoor Powered Equipment	57,408	71,872	66,016	61,280	64,640	12.60%
Building Construction Technology	36,240	38,160	37,280	31,392	33,536	-7.46%
Child Care & Development	37,760	33,872	32,144	31,168	28,336	-24.96%
Commercial Music Management	35,936	38,352	35,760	35,456	33,936	-5.57%
Criminal Justice	50,768	59,504	62,080	55,904	50,256	-1.01%
Fire Protection Technology	23,600	24,544	25,536	23,264	18,272	-22.58%
Heating, AC, & Refrigeration Technology	26,656	31,712	30,848	26,400	27,872	4.56%
Human Services	61,792	27,216	27,376	25,248	27,632	-55.28%
Jewelry	11,616	12,960	14,688	13,728	14,112	21.49%
Music	38,224	42,744	39,536	41,280	39,352	2.95%
Paralegal	19,776	20,544	21,984	22,080	20,928	5.83%
Photographic Technology	71,024	76,848	70,000	57,504	57,568	-18.95%
Radio-TV-Film	28,128	30,448	33,312	30,592	34,720	23.44%
Welding Technology	33,120	40,352	40,736	41,696	42,752	29.08%
TOTAL	540,832	608,712	602,640	554,512	547,928	1.31%
Arts & Humanities	Spring 2010	Spring 2011	Spring 2012	Spring 2013	Spring 2014	10-14 % chg
Arabic	2,048	2,480	2,144	2,256	2,080	1.56%
Art	141,536	158,736	152,016	144,528	129,888	-8.23%
Chinese	2,048	1,600	1,760	2,176	2,624	28.13%
Creative Writing	11,328	11,952	11,856	10,464	9,504	-16.10%
Dance	13,040	13,184	13,952	10,640	13,360	2.45%
Drama	29,376	35,680	31,648	27,376	33,520	14.11%
English for Speakers of Other Languages	58,368	69,168	73,312	53,632	49,808	-14.67%
French	28,336	27,248	26,512	22,512	20,400	-28.01%
German	10,496	10,480	9,584	9,472	7,232	-31.10%
Humanities	22,992	32,400	32,112	29,232	28,752	25.05%
Japanese	15,744	13,728	14,464	14,016	13,552	-13.92%
Latin	2,112	2,352	4,448	3,936	3,440	62.88%
Philosophy	114,000	128,976	119,760	111,792	102,912	-9.73%
Religion	7,104	5,328	6,720	2,688	4,512	-36.49%
Russian	2,336	1,328	1,648	3,440	2,880	23.29%
Spanish	191,424	208,928	183,728	166,688	143,248	-25.17%
TOTAL	652,288	723,568	685,664	614,848	567,712	-12.97%

NOTE: American Sign Language Interpreter Training began in Fall 2010. Disciplines are listed under the current (2013-14) dean area; they may have been listed under another dean area in previous years.

Source: Spring 12th Class Day Data

**Contact Hours (continued)
Spring 2010 - 2014**

Business Studies	Spring 2010	Spring 2011	Spring 2012	Spring 2013	Spring 2014	10-14 % chg
Accounting	109,312	122,416	114,256	116,432	118,192	8.12%
Business & Technical Communications	14,656	16,496	19,408	21,904	22,288	52.07%
Culinary Arts	18,400	22,672	26,656	25,744	25,552	38.87%
Financial Management	8,976	8,976	6,384	5,680	4,880	-45.63%
Hospitality Management	13,584	16,272	17,344	14,560	15,216	12.01%
International Business	5,520	5,664	3,168	2,592	2,064	-62.61%
Management	81,072	73,408	73,248	63,312	56,688	-30.08%
Marketing	26,496	28,656	23,376	20,384	20,416	-22.95%
Meeting & Events Planning	2,256	1,776	2,256	1,152	1,344	-40.43%
Office Administration	31,456	33,744	29,872	25,760	23,328	-25.84%
Real Estate	15,312	16,400	13,344	11,680	14,656	-4.28%
Travel & Tourism	1,232	1,568	1,888	960	1,552	25.97%
TOTAL	328,272	348,048	331,200	310,160	306,176	-6.73%

Communications	Spring 2010	Spring 2011	Spring 2012	Spring 2013	Spring 2014	10-14 % chg
English	491,136	522,048	498,768	492,480	498,288	1.46%
Journalism	14,688	14,544	13,872	13,392	12,848	-12.53%
Reading - Developmental	63,120	73,264	71,984	42,512	40,544	-35.77%
Speech	157,488	168,384	166,176	174,000	168,960	7.28%
Study Skills	2,976	3,520	4,912	3,088	1,968	-33.87%
Writing - Developmental	47,392	61,920	60,752	51,488	39,568	-16.51%
TOTAL	776,800	843,680	816,464	776,960	762,176	-1.88%

NOTE: Disciplines are listed under the current (2013-14) dean area; they may have been listed under another dean area in previous years.

Source: Spring 12th Class Day Data

**Contact Hours (continued)
Spring 2010 - 2014**

Computer Studies & Advanced Technology	Spring 2010	Spring 2011	Spring 2012	Spring 2013	Spring 2014	10-14 % chg
Architectural & Engineering CAD	53,664	51,648	53,760	48,384	46,848	-12.70%
Computer Information Technology	112,256	124,224	121,536	124,656	122,304	8.95%
Computer Science	115,168	119,584	121,888	106,880	108,064	-6.17%
Electronics & Advanced Technology	32,272	37,600	33,520	29,968	28,912	-10.41%
Land Surveying Technology/Geomatics	1,808	2,640	2,800	1,344	1,872	3.54%
Visual Communication	137,536	143,856	140,512	139,984	135,984	-1.13%
TOTAL	452,704	479,552	474,016	451,216	443,984	-1.93%

Health Sciences	Spring 2010	Spring 2011	Spring 2012	Spring 2013	Spring 2014	10-14 % chg
Allied Health Sciences	44,672	51,376	49,904	43,440	38,368	-14.11%
Dental Hygiene	10,560	10,240	10,560	9,792	10,160	-3.79%
Diagnostic Medical Imaging Radiology	28,032	29,888	35,040	35,776	35,328	26.03%
Emergency Medical Services Professions	32,792	31,640	37,258	35,830	36,619	11.67%
Health & Kinesiology	133,104	142,128	131,088	107,904	89,040	-33.10%
Health Information Technology	8,528	8,896	8,672	8,816	9,600	12.57%
Medical Lab Technology	9,936	15,632	16,512	17,648	16,288	63.93%
Nursing - Professional	176,624	181,728	170,544	156,336	166,912	-5.50%
Nursing - Vocational	42,304	45,856	42,608	41,184	36,128	-14.60%
Occupational Therapy Assistant	14,720	14,208	15,392	14,800	13,696	-6.96%
Personal Fitness Trainer	1,872	3,200	3,648	4,080	4,832	158.12%
Pharmacy Technology	16,848	14,848	14,832	15,520	15,184	-9.88%
Physical Therapist Assistant	12,784	14,400	16,512	17,120	18,480	44.56%
Sonography	18,368	16,800	18,320	14,848	13,584	-26.05%
Surgical Technology	11,888	13,120	13,920	14,624	12,560	5.65%
TOTAL	563,032	593,960	584,810	537,718	516,779	-8.21%

NOTE: Disciplines are listed under the current (2013-14) dean area; they may have been listed under another dean area in previous years.

Source: Spring 12th Class Day Data

**Contact Hours (continued)
Spring 2010 - 2014**

Math & Sciences	Spring 2010	Spring 2011	Spring 2012	Spring 2013	Spring 2014	10-14 % chg
Astronomy	21,936	26,160	23,232	21,840	20,976	-4.38%
Biology	380,528	457,440	431,200	409,968	419,888	10.34%
Biotechnology	4,800	7,008	6,400	9,280	8,640	80.00%
Chemistry	179,664	206,256	202,464	170,448	160,848	-10.47%
Engineering	4,336	5,072	5,872	6,656	7,232	66.79%
Environmental Science & Technology	15,792	15,680	12,672	11,472	11,872	-24.82%
Geology	52,128	51,552	46,272	33,792	39,360	-24.49%
Mathematics	343,840	381,056	368,144	339,424	363,312	5.66%
Mathematics - Developmental	501,328	540,784	528,688	441,152	342,144	-31.75%
Physics	101,616	114,144	100,320	101,568	97,824	-3.73%
TOTAL	1,605,968	1,805,152	1,725,264	1,545,600	1,472,096	-8.34%
Social & Behavioral Sciences	Spring 2010	Spring 2011	Spring 2012	Spring 2013	Spring 2014	10-14 % chg
Anthropology	47,328	50,832	37,488	40,512	30,624	-35.29%
Economics	132,240	123,024	105,456	101,184	103,152	-22.00%
Educational Instruction	12,576	11,616	10,032	8,976	9,120	-27.48%
Geography	45,552	44,160	36,384	32,592	26,112	-42.68%
Geographic Information Systems	.	4,560	5,232	6,752	9,328	.
Government	329,776	336,144	316,832	322,896	316,304	-4.09%
History	375,312	391,968	370,416	331,104	310,464	-17.28%
Human Development	39,648	41,496	46,176	27,912	29,352	-25.97%
Military Science	1,440	1,296	816	432	240	-83.33%
Psychology	217,152	242,544	243,840	216,048	190,896	-12.09%
Sociology	109,200	121,824	101,280	91,872	72,192	-33.89%
TOTAL	1,310,224	1,369,464	1,273,952	1,180,280	1,097,784	-16.21%
GRAND TOTAL (Contact Hours)	6,230,120	6,772,136	6,494,010	5,971,294	5,714,635	-8.27%

NOTE: Geographic Information Systems began in Fall 2009; previously, enrollments were reported under Geography until Fall 2010. Disciplines are listed under the current (2013-14) dean area; they may have been listed under another dean area in previous years.

Source: Spring 12th Class Day Data

**Distance Learning Course Enrollment and Contact Hours
Spring 2010 - 2014**

	Spring 2010	Spring 2011	Spring 2012	Spring 2013	Spring 2014	10-14 % chg
COURSE ENROLLMENT						
Directed Study (DIR)	254	236	212	35	.	.
Hybrid (HYD)	670	758	997	1,272	1,216	81.49%
Instructional Television (ITV)	755	728	386	206	36	-95.23%
Online (ONL)	11,704	12,324	13,026	12,718	12,695	8.47%
Print-Based (PRN)	415	379	404	273	185	-55.42%
TOTAL	13,798	14,425	15,025	14,504	14,132	2.42%

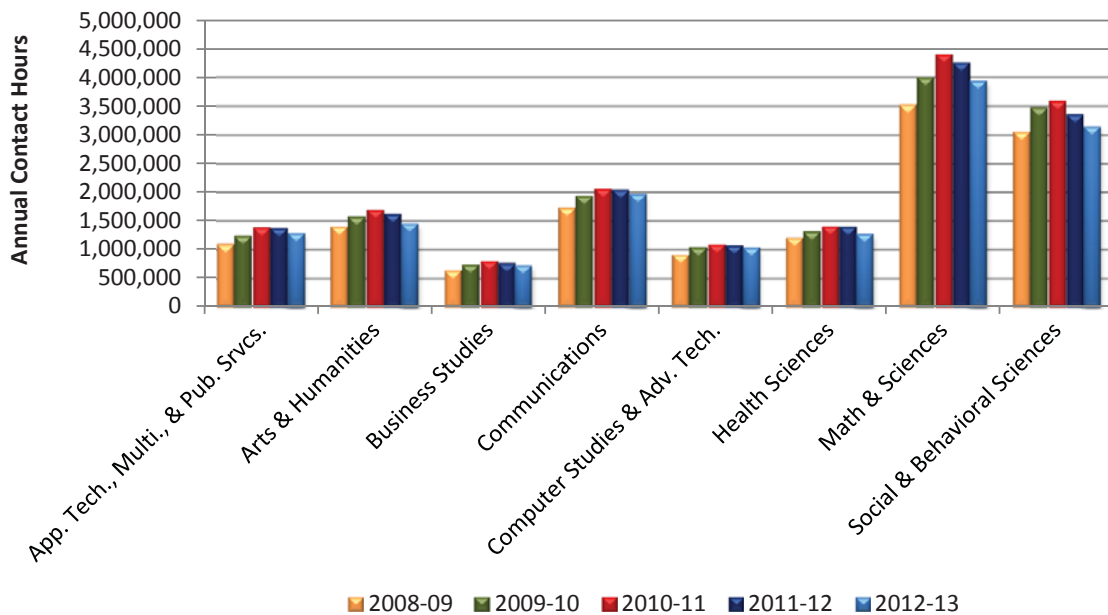
	Spring 2010	Spring 2011	Spring 2012	Spring 2013	Spring 2014	10-14 % chg
CONTACT HOURS						
Directed Study (DIR)	22,720	20,432	21,728	1,680	.	.
Hybrid (HYD)	36,304	41,056	53,872	70,080	72,080	98.55%
Instructional Television (ITV)	35,776	34,448	18,336	9,888	1,728	-95.17%
Online (ONL)	607,024	637,384	673,520	648,144	646,752	6.54%
Print-Based (PRN)	19,020	18,192	19,392	13,104	8,880	-53.31%
TOTAL	721,744	751,512	786,848	742,896	729,440	1.07%

NOTE: Refer to Useful Terms or Glossary for definitions of terms.

Source: Spring 12th Class Day Data

Annual Contact Hours by Dean Area
Academic Years 2009 - 2013

Dean Area	2008-09	2009-10	2010-11	2011-12	2012-13	09-13 % chg
Applied Technologies, Multimedia, & Public Services	1,110,776	1,257,288	1,398,760	1,391,616	1,303,304	17.33%
Arts & Humanities	1,414,688	1,588,304	1,706,448	1,632,416	1,469,312	3.86%
Business Studies	652,720	753,856	817,008	778,496	739,488	13.29%
Communications	1,745,440	1,950,240	2,074,848	2,057,888	1,983,440	13.64%
Computer Studies & Advanced Technology	927,856	1,052,592	1,106,240	1,088,016	1,053,104	13.50%
Health Sciences	1,219,912	1,330,450	1,420,024	1,411,913	1,292,280	5.93%
Math & Sciences	3,541,600	4,013,872	4,414,992	4,272,368	3,954,288	11.65%
Social & Behavioral Sciences	3,066,040	3,491,152	3,602,936	3,371,896	3,156,160	2.94%
TOTAL	13,679,032	15,437,754	16,541,256	16,004,609	14,951,376	9.30%



NOTE: Disciplines are listed under the current (2012-13) dean area; they may have been listed under another dean area in previous years.

Source: Fall 12th Class Day Data, Spring 12th Class Day Data, and Summer 4th Class Day Data (Second summer session)

THIS PAGE INTENTIONALLY LEFT BLANK