

**Student Headcount, Course Enrollment, Contact Hours, and Semester
Credit Hours by Location
Spring 2014**

Location	Student Headcount	Course Enrollment	Contact Hours	Semester Credit Hours
Cypress Creek Campus	4,523	8,655	480,696	25,472
Eastview Campus	3,536	6,589	474,891	18,726
Elgin Campus	320	474	24,648	1,382
Hays Campus	980	1,735	91,232	5,155
Northridge Campus	8,627	16,676	1,003,840	50,241
Pinnacle Campus	2,161	4,069	220,384	12,282
Rio Grande Campus	7,126	13,549	803,968	42,193
Riverside Campus	5,840	10,716	644,040	32,808
Round Rock Campus	4,544	8,958	553,616	26,795
South Austin	2,995	4,775	266,616	14,475
Distance Learning	9,164	14,132	729,440	42,538
Centers	1,071	1,741	90,272	5,287
Site-Based Instruction	3,751	5,699	331,488	17,131

NOTE: Refer to Useful Terms or Glossary for definitions of terms. Students who attend multiple locations are counted once at each location. Students who enroll in multiple courses are counted once for each course.

Source: Spring 12th Class Day Data

Course Enrollment
Spring 2010 - 2014

Applied Technologies, Multimedia, & Public Services	Spring 2010	Spring 2011	Spring 2012	Spring 2013	Spring 2014	10-14 % chg
American Sign Language Interpreter Training	.	546	579	519	534	.
Auto Body Collision & Refinishing	89	117	129	113	127	42.70%
Automotive Technology & Outdoor Powered Equipment	570	716	650	606	624	9.47%
Building Construction Technology	418	484	461	390	417	-0.24%
Child Care & Development	470	432	422	419	379	-19.36%
Commercial Music Management	543	579	533	524	506	-6.81%
Criminal Justice	982	1,166	1,201	1,092	949	-3.36%
Fire Protection Technology	316	335	345	326	239	-24.37%
Heating, AC, & Refrigeration Technology	272	323	313	271	286	5.15%
Human Services	826	495	484	432	463	-43.95%
Jewelry	121	135	153	143	147	21.49%
Music	834	927	883	914	858	2.88%
Paralegal	332	368	388	390	341	2.71%
Photographic Technology	577	621	566	461	461	-20.10%
Radio-TV-Film	442	487	518	492	546	23.53%
Welding Technology	345	419	423	433	444	28.70%
TOTAL	7,137	8,150	8,048	7,525	7,321	2.58%
Arts & Humanities	Spring 2010	Spring 2011	Spring 2012	Spring 2013	Spring 2014	10-14 % chg
Arabic	30	37	30	31	30	0.00%
Art	2,142	2,458	2,369	2,309	2,077	-3.03%
Chinese	30	20	26	30	38	26.67%
Creative Writing	236	249	247	218	198	-16.10%
Dance	205	206	228	179	219	6.83%
Drama	492	623	568	481	599	21.75%
English for Speakers of Other Languages	909	1,078	1,143	836	775	-14.74%
French	379	359	355	301	269	-29.02%
German	136	137	123	122	94	-30.88%
Humanities	479	675	669	609	599	25.05%
Japanese	210	184	198	192	183	-12.86%
Latin	30	33	58	54	43	43.33%
Philosophy	2,375	2,687	2,495	2,329	2,144	-9.73%
Religion	148	111	140	56	94	-36.49%
Russian	32	19	23	45	36	12.50%
Spanish	2,559	2,774	2,437	2,192	1,901	-25.71%
TOTAL	10,392	11,650	11,109	9,984	9,299	-10.52%

NOTE: American Sign Language Interpreter Training began in Fall 2010. Disciplines are listed under the current (2013-14) dean area; they may have been listed under another dean area in previous years.

Source: Spring 12th Class Day Data

**Course Enrollment (continued)
Spring 2010 - 2014**

Business Studies	Spring 2010	Spring 2011	Spring 2012	Spring 2013	Spring 2014	10-14 % chg
Accounting	1,727	1,938	1,823	1,850	1,876	8.63%
Business & Technical Communications	291	332	395	447	446	53.26%
Culinary Arts	295	349	392	332	333	12.88%
Financial Management	187	187	133	119	107	-42.78%
Hospitality Management	230	280	260	273	248	7.83%
International Business	115	118	66	54	43	-62.61%
Management	1,669	1,536	1,521	1,319	1,176	-29.54%
Marketing	552	597	487	406	401	-27.36%
Meeting & Events Planning	47	37	47	24	28	-40.43%
Office Administration	523	561	494	426	381	-27.15%
Real Estate	290	312	258	280	352	21.38%
Travel & Tourism	23	26	32	20	30	30.43%
TOTAL	5,949	6,273	5,908	5,550	5,421	-8.88%

Communications	Spring 2010	Spring 2011	Spring 2012	Spring 2013	Spring 2014	10-14 % chg
English	10,232	10,876	10,391	10,260	10,381	1.46%
Journalism	297	296	277	268	259	-12.79%
Reading - Developmental	1,148	1,324	1,303	783	732	-36.24%
Speech	3,281	3,508	3,462	3,625	3,520	7.28%
Study Skills	69	81	109	68	41	-40.58%
Writing - Developmental	852	1,178	1,187	1,009	746	-12.44%
TOTAL	15,879	17,263	16,729	16,013	15,679	-1.26%

NOTE: Disciplines are listed under the current (2013-14) dean area; they may have been listed under another dean area in previous years.

Source: Spring 12th Class Day Data

**Course Enrollment (continued)
Spring 2010 - 2014**

Computer Studies & Advanced Technology	Spring 2010	Spring 2011	Spring 2012	Spring 2013	Spring 2014	10-14 % chg
Architectural & Engineering CAD	559	538	560	504	488	-12.70%
Computer Information Technology	1,549	1,720	1,678	1,739	1,696	9.49%
Computer Science	1,761	1,826	1,862	1,627	1,646	-6.53%
Electronics & Advanced Technology	368	429	370	337	317	-13.86%
Land Surveying Technology/Geomatics	29	47	42	22	29	0.00%
Visual Communication	1,482	1,559	1,510	1,501	1,450	-2.16%
TOTAL	5,748	6,119	6,022	5,730	5,626	-2.12%

Health Sciences	Spring 2010	Spring 2011	Spring 2012	Spring 2013	Spring 2014	10-14 % chg
Allied Health Sciences	1,165	1,300	1,273	1,130	997	-14.42%
Dental Hygiene	99	96	99	91	98	-1.01%
Diagnostic Medical Imaging Radiology	195	227	249	252	255	30.77%
Emergency Medical Services Professions	361	359	412	394	392	8.59%
Health & Kinesiology	2,773	2,961	2,731	2,248	1,855	-33.10%
Health Information Technology	165	165	159	148	155	-6.06%
Medical Lab Technology	103	132	133	140	138	33.98%
Nursing - Professional	2,154	2,241	1,979	1,830	1,940	-9.94%
Nursing - Vocational	434	503	453	430	407	-6.22%
Occupational Therapy Assistant	145	146	154	151	135	-6.90%
Personal Fitness Trainer	27	41	49	55	65	140.74%
Pharmacy Technology	199	191	190	198	203	2.01%
Physical Therapist Assistant	101	114	132	133	144	42.57%
Sonography	102	90	103	82	77	-24.51%
Surgical Technology	94	98	102	112	94	0.00%
TOTAL	8,117	8,664	8,218	7,394	6,955	-14.32%

NOTE: Disciplines are listed under the current (2013-14) dean area; they may have been listed under another dean area in previous years.

Source: Spring 12th Class Day Data

**Course Enrollment (continued)
Spring 2010 - 2014**

Math & Sciences	Spring 2010	Spring 2011	Spring 2012	Spring 2013	Spring 2014	10-14 % chg
Astronomy	387	458	406	389	373	-3.62%
Biology	5,658	6,767	6,366	6,025	6,205	9.67%
Biotechnology	62	75	77	72	87	40.32%
Chemistry	3,743	4,297	4,218	3,551	3,351	-10.47%
Engineering	112	130	157	177	161	43.75%
Environmental Science & Technology	318	318	247	222	233	-26.73%
Geology	739	711	624	460	521	-29.50%
Mathematics	6,565	7,305	7,060	6,505	6,972	6.20%
Mathematics - Developmental	8,043	8,737	8,577	7,069	5,530	-31.24%
Physics	1,077	1,209	1,045	1,058	1,019	-5.39%
TOTAL	26,704	30,007	28,777	25,528	24,452	-8.43%
Social & Behavioral Sciences	Spring 2010	Spring 2011	Spring 2012	Spring 2013	Spring 2014	10-14 % chg
Anthropology	974	1,051	768	840	634	-34.91%
Economics	2,755	2,563	2,197	2,108	2,149	-22.00%
Educational Instruction	262	242	209	187	190	-27.48%
Geography	863	842	671	587	486	-43.68%
Geographic Information Systems	.	47	60	72	99	.
Government	6,853	6,987	6,582	6,707	6,575	-4.06%
History	7,819	8,166	7,717	6,898	6,468	-17.28%
Human Development	1,171	1,268	1,466	829	914	-21.95%
Military Science	30	27	17	9	5	-83.33%
Psychology	4,524	5,053	5,080	4,501	3,977	-12.09%
Sociology	2,275	2,538	2,110	1,914	1,504	-33.89%
TOTAL	27,526	28,784	26,877	24,652	23,001	-16.44%
GRAND TOTAL (Course Enrollment)	107,452	116,910	111,688	102,376	97,754	-9.03%

NOTE: Geographic Information Systems began in Fall 2009; previously, enrollments were reported under Geography until Fall 2010. Disciplines are listed under the current (2013-14) dean area; they may have been listed under another dean area in previous years.

Source: Spring 12th Class Day Data

**Semester Credit Hours
Spring 2010 - 2014**

Applied Technologies, Multimedia, & Public Services	Spring 2010	Spring 2011	Spring 2012	Spring 2013	Spring 2014	10-14 % chg
American Sign Language Interpreter Training	.	2,007	2,112	1,896	1,926	.
Auto Body Collision & Refinishing	299	411	439	382	430	43.81%
Automotive Technology & Outdoor Powered Equipment	2,280	2,864	2,600	2,416	2,485	8.99%
Building Construction Technology	1,578	1,723	1,656	1,434	1,533	-2.85%
Child Care & Development	1,533	1,371	1,306	1,243	1,142	-25.51%
Commercial Music Management	1,584	1,717	1,597	1,583	1,535	-3.09%
Criminal Justice	2,997	3,575	3,668	3,362	2,909	-2.94%
Fire Protection Technology	1,103	1,160	1,200	1,118	842	-23.66%
Heating, AC, & Refrigeration Technology	1,054	1,248	1,202	1,060	1,118	6.07%
Human Services	2,801	1,518	1,486	1,338	1,434	-48.80%
Jewelry	484	540	612	572	588	21.49%
Music	1,849	1,934	2,047	2,134	2,076	12.28%
Paralegal	996	1,104	1,164	1,170	1,023	2.71%
Photographic Technology	1,793	1,920	1,737	1,390	1,389	-22.53%
Radio-TV-Film	1,326	1,461	1,554	1,476	1,638	23.53%
Welding Technology	1,380	1,676	1,692	1,732	1,776	28.70%
TOTAL	23,057	26,229	26,072	24,306	23,844	3.41%
Arts & Humanities	Spring 2010	Spring 2011	Spring 2012	Spring 2013	Spring 2014	10-14 % chg
Arabic	128	155	134	141	130	1.56%
Art	6,426	7,374	7,107	6,927	6,231	-3.03%
Chinese	128	100	110	136	164	28.13%
Creative Writing	708	747	741	654	594	-16.10%
Dance	349	361	432	363	456	30.66%
Drama	1,462	1,853	1,686	1,427	1,769	21.00%
English for Speakers of Other Languages	2,727	3,234	3,429	2,508	2,325	-14.74%
French	1,771	1,703	1,657	1,407	1,275	-28.01%
German	656	655	599	592	452	-31.10%
Humanities	1,437	2,025	2,007	1,827	1,797	25.05%
Japanese	984	858	904	876	847	-13.92%
Latin	132	147	278	246	215	62.88%
Philosophy	7,125	8,061	7,485	6,987	6,432	-9.73%
Religion	444	333	420	168	282	-36.49%
Russian	146	83	103	215	180	23.29%
Spanish	11,939	13,036	11,483	10,418	8,953	-25.01%
TOTAL	36,562	40,725	38,575	34,892	32,102	-12.20%

NOTE: American Sign Language Interpreter Training began in Fall 2010. Disciplines are listed under the current (2013-14) dean area; they may have been listed under another dean area in previous years.

Source: Spring 12th Class Day Data

**Semester Credit Hours (continued)
Spring 2010 - 2014**

Business Studies	Spring 2010	Spring 2011	Spring 2012	Spring 2013	Spring 2014	10-14 % chg
Accounting	5,283	5,901	5,546	5,627	5,702	7.93%
Business & Technical Communications	898	1,013	1,213	1,369	1,393	55.12%
Culinary Arts	778	941	1,072	914	918	17.99%
Financial Management	561	561	399	355	305	-45.63%
Hospitality Management	690	840	780	819	744	7.83%
International Business	345	354	198	162	129	-62.61%
Management	5,007	4,588	4,563	3,957	3,528	-29.54%
Marketing	1,656	1,791	1,461	1,218	1,203	-27.36%
Meeting & Events Planning	141	111	141	72	84	-40.43%
Office Administration	1,335	1,465	1,273	1,104	979	-26.67%
Real Estate	957	1,025	834	730	916	-4.28%
Travel & Tourism	69	78	96	60	90	30.43%
TOTAL	17,720	18,668	17,576	16,387	15,991	-9.76%

Communications	Spring 2010	Spring 2011	Spring 2012	Spring 2013	Spring 2014	10-14 % chg
English	30,696	32,628	31,173	30,780	31,143	1.46%
Journalism	888	888	831	804	777	-12.50%
Reading - Developmental	3,972	3,972	3,909	2,349	2,196	-44.71%
Speech	9,843	10,524	10,386	10,875	10,560	7.28%
Study Skills	186	220	307	193	123	-33.87%
Writing - Developmental	2,488	3,300	3,273	2,741	2,100	-15.59%
TOTAL	47,543	51,532	49,879	47,742	46,899	-1.35%

NOTE: Disciplines are listed under the current (2013-14) dean area; they may have been listed under another dean area in previous years.

Source: Spring 12th Class Day Data

**Semester Credit Hours (continued)
Spring 2010 - 2014**

Computer Studies & Advanced Technology	Spring 2010	Spring 2011	Spring 2012	Spring 2013	Spring 2014	10-14 % chg
Architectural & Engineering CAD	2,236	2,152	2,240	2,016	1,952	-12.70%
Computer Information Technology	4,930	5,441	5,309	5,475	5,350	8.52%
Computer Science	5,360	5,563	5,671	4,967	5,023	-6.29%
Electronics & Advanced Technology	1,336	1,552	1,388	1,225	1,175	-12.05%
Land Surveying Technology/Geomatics	89	141	127	66	87	-2.25%
Visual Communication	5,596	5,780	5,635	5,598	5,418	-3.18%
TOTAL	19,547	20,629	20,370	19,347	19,005	-2.77%

Health Sciences	Spring 2010	Spring 2011	Spring 2012	Spring 2013	Spring 2014	10-14 % chg
Allied Health Sciences	2,792	3,211	3,119	2,715	2,398	-14.11%
Dental Hygiene	214	210	214	198	210	-1.87%
Diagnostic Medical Imaging Radiology	555	639	705	716	713	28.47%
Emergency Medical Services Professions	961	967	1,050	1,023	1,026	6.76%
Health & Kinesiology	3,655	3,810	3,569	2,993	2,392	-34.56%
Health Information Technology	468	463	453	413	424	-9.40%
Medical Lab Technology	274	400	366	391	366	33.58%
Nursing - Professional	5,061	5,202	4,893	4,480	4,779	-5.57%
Nursing - Vocational	1,376	1,552	1,363	1,345	1,223	-11.12%
Occupational Therapy Assistant	344	352	365	362	320	-6.98%
Personal Fitness Trainer	91	146	168	188	222	143.96%
Pharmacy Technology	577	536	541	564	592	2.60%
Physical Therapist Assistant	340	382	440	440	479	40.88%
Sonography	371	290	320	257	239	-35.58%
Surgical Technology	342	370	390	416	365	6.73%
TOTAL	17,421	18,530	17,956	16,501	15,748	-9.60%

NOTE: Disciplines are listed under the current (2013-14) dean area; they may have been listed under another dean area in previous years.

Source: Spring 12th Class Day Data

**Semester Credit Hours (continued)
Spring 2010 - 2014**

Math & Sciences	Spring 2010	Spring 2011	Spring 2012	Spring 2013	Spring 2014	10-14 % chg
Astronomy	1,231	1,461	1,296	1,233	1,183	-3.90%
Biology	17,198	20,449	19,379	18,460	18,954	10.21%
Biotechnology	202	243	237	236	269	33.17%
Chemistry	7,527	8,613	8,458	7,109	6,711	-10.84%
Engineering	271	317	367	416	387	42.80%
Environmental Science & Technology	923	930	719	668	683	-26.00%
Geology	2,564	2,496	2,212	1,624	1,862	-27.38%
Mathematics	21,474	23,802	22,972	21,209	22,696	5.69%
Mathematics - Developmental	23,460	25,373	24,872	20,654	16,133	-31.23%
Physics	4,271	4,796	4,180	4,232	4,076	-4.57%
TOTAL	79,121	88,480	84,692	75,841	72,954	-7.79%
Social & Behavioral Sciences	Spring 2010	Spring 2011	Spring 2012	Spring 2013	Spring 2014	10-14 % chg
Anthropology	2,922	3,153	2,304	2,520	1,902	-34.91%
Economics	8,265	7,689	6,591	6,324	6,447	-22.00%
Educational Instruction	786	726	627	561	570	-27.48%
Geography	2,665	2,604	2,100	1,853	1,516	-43.11%
Geographic Information Systems	.	179	209	259	376	.
Government	20,559	20,961	19,746	20,121	19,725	-4.06%
History	23,457	24,498	23,151	20,694	19,404	-17.28%
Human Development	2,133	2,190	2,382	1,497	1,532	-28.18%
Military Science	60	54	34	18	10	-83.33%
Psychology	13,572	15,159	15,240	13,503	11,931	-12.09%
Sociology	6,825	7,614	6,330	5,742	4,512	-33.89%
TOTAL	81,244	84,827	78,714	73,092	67,925	-16.39%
GRAND TOTAL (Semester Credit Hours)	322,215	349,620	333,834	308,108	294,468	-8.61%

NOTE: Geographic Information Systems began in Fall 2009; previously, enrollments were reported under Geography until Fall 2010. Disciplines are listed under the current (2013-14) dean area; they may have been listed under another dean area in previous years.

Source: Spring 12th Class Day Data

**Contact Hours
Spring 2010 - 2014**

Applied Technologies, Multimedia, & Public Services	Spring 2010	Spring 2011	Spring 2012	Spring 2013	Spring 2014	10-14 % chg
American Sign Language Interpreter Training	.	49,120	52,400	47,360	42,512	.
Auto Body Collision & Refinishing	8,784	10,464	12,944	10,160	11,504	30.97%
Automotive Technology & Outdoor Powered Equipment	57,408	71,872	66,016	61,280	64,640	12.60%
Building Construction Technology	36,240	38,160	37,280	31,392	33,536	-7.46%
Child Care & Development	37,760	33,872	32,144	31,168	28,336	-24.96%
Commercial Music Management	35,936	38,352	35,760	35,456	33,936	-5.57%
Criminal Justice	50,768	59,504	62,080	55,904	50,256	-1.01%
Fire Protection Technology	23,600	24,544	25,536	23,264	18,272	-22.58%
Heating, AC, & Refrigeration Technology	26,656	31,712	30,848	26,400	27,872	4.56%
Human Services	61,792	27,216	27,376	25,248	27,632	-55.28%
Jewelry	11,616	12,960	14,688	13,728	14,112	21.49%
Music	38,224	42,744	39,536	41,280	39,352	2.95%
Paralegal	19,776	20,544	21,984	22,080	20,928	5.83%
Photographic Technology	71,024	76,848	70,000	57,504	57,568	-18.95%
Radio-TV-Film	28,128	30,448	33,312	30,592	34,720	23.44%
Welding Technology	33,120	40,352	40,736	41,696	42,752	29.08%
TOTAL	540,832	608,712	602,640	554,512	547,928	1.31%
Arts & Humanities	Spring 2010	Spring 2011	Spring 2012	Spring 2013	Spring 2014	10-14 % chg
Arabic	2,048	2,480	2,144	2,256	2,080	1.56%
Art	141,536	158,736	152,016	144,528	129,888	-8.23%
Chinese	2,048	1,600	1,760	2,176	2,624	28.13%
Creative Writing	11,328	11,952	11,856	10,464	9,504	-16.10%
Dance	13,040	13,184	13,952	10,640	13,360	2.45%
Drama	29,376	35,680	31,648	27,376	33,520	14.11%
English for Speakers of Other Languages	58,368	69,168	73,312	53,632	49,808	-14.67%
French	28,336	27,248	26,512	22,512	20,400	-28.01%
German	10,496	10,480	9,584	9,472	7,232	-31.10%
Humanities	22,992	32,400	32,112	29,232	28,752	25.05%
Japanese	15,744	13,728	14,464	14,016	13,552	-13.92%
Latin	2,112	2,352	4,448	3,936	3,440	62.88%
Philosophy	114,000	128,976	119,760	111,792	102,912	-9.73%
Religion	7,104	5,328	6,720	2,688	4,512	-36.49%
Russian	2,336	1,328	1,648	3,440	2,880	23.29%
Spanish	191,424	208,928	183,728	166,688	143,248	-25.17%
TOTAL	652,288	723,568	685,664	614,848	567,712	-12.97%

NOTE: American Sign Language Interpreter Training began in Fall 2010. Disciplines are listed under the current (2013-14) dean area; they may have been listed under another dean area in previous years.

Source: Spring 12th Class Day Data

**Contact Hours (continued)
Spring 2010 - 2014**

Business Studies	Spring 2010	Spring 2011	Spring 2012	Spring 2013	Spring 2014	10-14 % chg
Accounting	109,312	122,416	114,256	116,432	118,192	8.12%
Business & Technical Communications	14,656	16,496	19,408	21,904	22,288	52.07%
Culinary Arts	18,400	22,672	26,656	25,744	25,552	38.87%
Financial Management	8,976	8,976	6,384	5,680	4,880	-45.63%
Hospitality Management	13,584	16,272	17,344	14,560	15,216	12.01%
International Business	5,520	5,664	3,168	2,592	2,064	-62.61%
Management	81,072	73,408	73,248	63,312	56,688	-30.08%
Marketing	26,496	28,656	23,376	20,384	20,416	-22.95%
Meeting & Events Planning	2,256	1,776	2,256	1,152	1,344	-40.43%
Office Administration	31,456	33,744	29,872	25,760	23,328	-25.84%
Real Estate	15,312	16,400	13,344	11,680	14,656	-4.28%
Travel & Tourism	1,232	1,568	1,888	960	1,552	25.97%
TOTAL	328,272	348,048	331,200	310,160	306,176	-6.73%

Communications	Spring 2010	Spring 2011	Spring 2012	Spring 2013	Spring 2014	10-14 % chg
English	491,136	522,048	498,768	492,480	498,288	1.46%
Journalism	14,688	14,544	13,872	13,392	12,848	-12.53%
Reading - Developmental	63,120	73,264	71,984	42,512	40,544	-35.77%
Speech	157,488	168,384	166,176	174,000	168,960	7.28%
Study Skills	2,976	3,520	4,912	3,088	1,968	-33.87%
Writing - Developmental	47,392	61,920	60,752	51,488	39,568	-16.51%
TOTAL	776,800	843,680	816,464	776,960	762,176	-1.88%

NOTE: Disciplines are listed under the current (2013-14) dean area; they may have been listed under another dean area in previous years.

Source: Spring 12th Class Day Data

**Contact Hours (continued)
Spring 2010 - 2014**

Computer Studies & Advanced Technology	Spring 2010	Spring 2011	Spring 2012	Spring 2013	Spring 2014	10-14 % chg
Architectural & Engineering CAD	53,664	51,648	53,760	48,384	46,848	-12.70%
Computer Information Technology	112,256	124,224	121,536	124,656	122,304	8.95%
Computer Science	115,168	119,584	121,888	106,880	108,064	-6.17%
Electronics & Advanced Technology	32,272	37,600	33,520	29,968	28,912	-10.41%
Land Surveying Technology/Geomatics	1,808	2,640	2,800	1,344	1,872	3.54%
Visual Communication	137,536	143,856	140,512	139,984	135,984	-1.13%
TOTAL	452,704	479,552	474,016	451,216	443,984	-1.93%

Health Sciences	Spring 2010	Spring 2011	Spring 2012	Spring 2013	Spring 2014	10-14 % chg
Allied Health Sciences	44,672	51,376	49,904	43,440	38,368	-14.11%
Dental Hygiene	10,560	10,240	10,560	9,792	10,160	-3.79%
Diagnostic Medical Imaging Radiology	28,032	29,888	35,040	35,776	35,328	26.03%
Emergency Medical Services Professions	32,792	31,640	37,258	35,830	36,619	11.67%
Health & Kinesiology	133,104	142,128	131,088	107,904	89,040	-33.10%
Health Information Technology	8,528	8,896	8,672	8,816	9,600	12.57%
Medical Lab Technology	9,936	15,632	16,512	17,648	16,288	63.93%
Nursing - Professional	176,624	181,728	170,544	156,336	166,912	-5.50%
Nursing - Vocational	42,304	45,856	42,608	41,184	36,128	-14.60%
Occupational Therapy Assistant	14,720	14,208	15,392	14,800	13,696	-6.96%
Personal Fitness Trainer	1,872	3,200	3,648	4,080	4,832	158.12%
Pharmacy Technology	16,848	14,848	14,832	15,520	15,184	-9.88%
Physical Therapist Assistant	12,784	14,400	16,512	17,120	18,480	44.56%
Sonography	18,368	16,800	18,320	14,848	13,584	-26.05%
Surgical Technology	11,888	13,120	13,920	14,624	12,560	5.65%
TOTAL	563,032	593,960	584,810	537,718	516,779	-8.21%

NOTE: Disciplines are listed under the current (2013-14) dean area; they may have been listed under another dean area in previous years.

Source: Spring 12th Class Day Data

**Contact Hours (continued)
Spring 2010 - 2014**

Math & Sciences	Spring 2010	Spring 2011	Spring 2012	Spring 2013	Spring 2014	10-14 % chg
Astronomy	21,936	26,160	23,232	21,840	20,976	-4.38%
Biology	380,528	457,440	431,200	409,968	419,888	10.34%
Biotechnology	4,800	7,008	6,400	9,280	8,640	80.00%
Chemistry	179,664	206,256	202,464	170,448	160,848	-10.47%
Engineering	4,336	5,072	5,872	6,656	7,232	66.79%
Environmental Science & Technology	15,792	15,680	12,672	11,472	11,872	-24.82%
Geology	52,128	51,552	46,272	33,792	39,360	-24.49%
Mathematics	343,840	381,056	368,144	339,424	363,312	5.66%
Mathematics - Developmental	501,328	540,784	528,688	441,152	342,144	-31.75%
Physics	101,616	114,144	100,320	101,568	97,824	-3.73%
TOTAL	1,605,968	1,805,152	1,725,264	1,545,600	1,472,096	-8.34%
Social & Behavioral Sciences	Spring 2010	Spring 2011	Spring 2012	Spring 2013	Spring 2014	10-14 % chg
Anthropology	47,328	50,832	37,488	40,512	30,624	-35.29%
Economics	132,240	123,024	105,456	101,184	103,152	-22.00%
Educational Instruction	12,576	11,616	10,032	8,976	9,120	-27.48%
Geography	45,552	44,160	36,384	32,592	26,112	-42.68%
Geographic Information Systems	.	4,560	5,232	6,752	9,328	.
Government	329,776	336,144	316,832	322,896	316,304	-4.09%
History	375,312	391,968	370,416	331,104	310,464	-17.28%
Human Development	39,648	41,496	46,176	27,912	29,352	-25.97%
Military Science	1,440	1,296	816	432	240	-83.33%
Psychology	217,152	242,544	243,840	216,048	190,896	-12.09%
Sociology	109,200	121,824	101,280	91,872	72,192	-33.89%
TOTAL	1,310,224	1,369,464	1,273,952	1,180,280	1,097,784	-16.21%
GRAND TOTAL (Contact Hours)	6,230,120	6,772,136	6,494,010	5,971,294	5,714,635	-8.27%

NOTE: Geographic Information Systems began in Fall 2009; previously, enrollments were reported under Geography until Fall 2010. Disciplines are listed under the current (2013-14) dean area; they may have been listed under another dean area in previous years.

Source: Spring 12th Class Day Data

**Distance Learning Course Enrollment and Contact Hours
Spring 2010 - 2014**

	Spring 2010	Spring 2011	Spring 2012	Spring 2013	Spring 2014	10-14 % chg
COURSE ENROLLMENT						
Directed Study (DIR)	254	236	212	35	.	.
Hybrid (HYD)	670	758	997	1,272	1,216	81.49%
Instructional Television (ITV)	755	728	386	206	36	-95.23%
Online (ONL)	11,704	12,324	13,026	12,718	12,695	8.47%
Print-Based (PRN)	415	379	404	273	185	-55.42%
TOTAL	13,798	14,425	15,025	14,504	14,132	2.42%

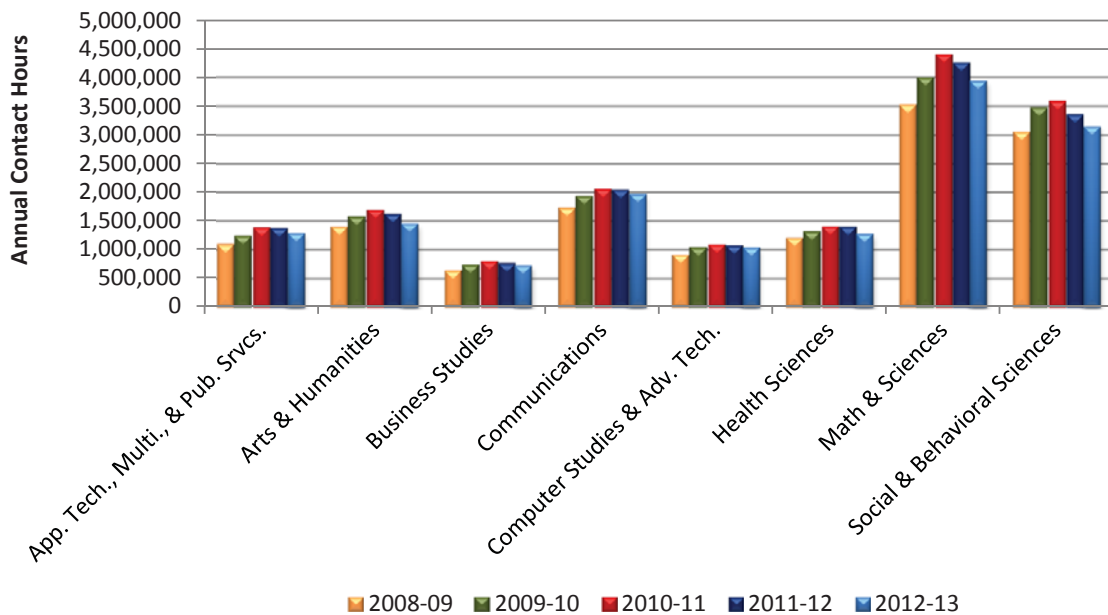
	Spring 2010	Spring 2011	Spring 2012	Spring 2013	Spring 2014	10-14 % chg
CONTACT HOURS						
Directed Study (DIR)	22,720	20,432	21,728	1,680	.	.
Hybrid (HYD)	36,304	41,056	53,872	70,080	72,080	98.55%
Instructional Television (ITV)	35,776	34,448	18,336	9,888	1,728	-95.17%
Online (ONL)	607,024	637,384	673,520	648,144	646,752	6.54%
Print-Based (PRN)	19,020	18,192	19,392	13,104	8,880	-53.31%
TOTAL	721,744	751,512	786,848	742,896	729,440	1.07%

NOTE: Refer to Useful Terms or Glossary for definitions of terms.

Source: Spring 12th Class Day Data

Annual Contact Hours by Dean Area
Academic Years 2009 - 2013

Dean Area	2008-09	2009-10	2010-11	2011-12	2012-13	09-13 % chg
Applied Technologies, Multimedia, & Public Services	1,110,776	1,257,288	1,398,760	1,391,616	1,303,304	17.33%
Arts & Humanities	1,414,688	1,588,304	1,706,448	1,632,416	1,469,312	3.86%
Business Studies	652,720	753,856	817,008	778,496	739,488	13.29%
Communications	1,745,440	1,950,240	2,074,848	2,057,888	1,983,440	13.64%
Computer Studies & Advanced Technology	927,856	1,052,592	1,106,240	1,088,016	1,053,104	13.50%
Health Sciences	1,219,912	1,330,450	1,420,024	1,411,913	1,292,280	5.93%
Math & Sciences	3,541,600	4,013,872	4,414,992	4,272,368	3,954,288	11.65%
Social & Behavioral Sciences	3,066,040	3,491,152	3,602,936	3,371,896	3,156,160	2.94%
TOTAL	13,679,032	15,437,754	16,541,256	16,004,609	14,951,376	9.30%



NOTE: Disciplines are listed under the current (2012-13) dean area; they may have been listed under another dean area in previous years.

Source: Fall 12th Class Day Data, Spring 12th Class Day Data, and Summer 4th Class Day Data (Second summer session)

THIS PAGE INTENTIONALLY LEFT BLANK