

Enrollment by Area

This section can be used for finding:

- course enrollment, semester credit hours, and contact hours by program.
- student headcount, enrollment, contact hours, and semester credit hours by dean area and location.

Contents

Notes.....	166
<u>Summer 2014</u>	
Student Headcount, Course Enrollment, Contact and Semester Credit Hours by Location	167
Course Enrollment	168
Semester Credit Hours	172
Contact Hours	176
Distance Learning Course Enrollment and Contact Hours	180
<u>Fall 2014</u>	
Student Headcount, Course Enrollment, Contact and Semester Credit Hours by Location	181
Course Enrollment	182
Semester Credit Hours	186
Contact Hours	190
Distance Learning Course Enrollment and Contact Hours	194
<u>Spring 2015</u>	
Student Headcount, Course Enrollment, Contact and Semester Credit Hours by Location	195
Course Enrollment	196
Semester Credit Hours	200
Contact Hours	204
Distance Learning Course Enrollment and Contact Hours	208
Annual Contact Hours by Dean Area	209

Notes

The Summer 2014 disciplines are listed under the 2013-14 dean area; they may have been listed under another dean area in previous years.

The Fall 2014 disciplines are listed under the 2014-15 dean area; they may have been listed under another dean area in previous years.

The Spring 2015 disciplines are listed under the 2014-15 dean area; they may have been listed under another dean area in previous years.

A “.” (dot) means that the program did not offer courses that semester.

The disciplines for the Annual Contact Hours by Dean Area are listed under the 2013-14 dean area; they may have been listed under another dean area in previous years.

American Sign Language Interpreter Training began in Fall 2010.

Veterinary Technology began in Spring 2014.

Beginning Fall 2014, the Human Development department changed its name to Student Development.

**Student Headcount, Course Enrollment, Contact Hours, and Semester
Credit Hours by Location
Summer 2014**

Location	Student Headcount	Course Enrollment	Contact Hours	Semester Credit Hours
Cypress Creek Campus	2,291	3,038	173,024	9,060
Eastview Campus	1,503	2,102	178,496	5,868
Elgin Campus	122	134	6,848	380
Hays Campus	500	670	35,120	1,960
Northridge Campus	4,936	6,857	414,648	20,648
Pinnacle Campus	1,026	1,302	70,416	3,846
Rio Grande Campus	4,526	6,106	370,032	19,572
Riverside Campus	2,528	3,472	213,280	10,371
Round Rock Campus	2,630	3,635	220,816	11,022
South Austin Campus	1,462	1,783	102,200	5,460
Distance Learning Centers	8,546 263	12,060 335	600,216 18,432	36,146 1,026
Site-Based Instruction	1,973	2,591	132,848	7,761

NOTE: Refer to the Glossary for definitions of terms. Students who attend multiple locations are counted once at each location. Students who enroll in multiple courses are counted once for each course.

Source: Summer 4th Class Day Data (Second summer session)

Course Enrollment
Summer 2010 - 2014

Applied Technologies, Multimedia, & Public Services	Summer 2010	Summer 2011	Summer 2012	Summer 2013	Summer 2014	10-14 % chg
American Sign Language Interpreter Training	.	249	193	236	239	.
Auto Body Collision Repair & Refinishing	31	50	46	41	40	29.03%
Automotive Technology & Outdoor Powered Equipment	198	246	196	188	231	16.67%
Building Construction Technology	188	183	131	153	121	-35.64%
Child Care & Development	208	153	146	101	75	-63.94%
Criminal Justice	395	457	407	388	323	-18.23%
Fire Protection Technology	55	22	61	59	11	-80.00%
Heating, AC, & Refrigeration Technology	137	158	140	135	97	-29.20%
Human Services	390	191	181	183	177	-54.62%
Jewelry	50	49	42	43	41	-18.00%
Music	373	362	323	375	325	-12.87%
Music Business, Performance & Technology	166	163	170	161	136	-18.07%
Paralegal	201	222	184	158	154	-23.38%
Photographic Technology	216	156	185	145	110	-49.07%
Radio-TV-Film	126	141	165	152	173	37.30%
Welding Technology	152	184	188	190	177	16.45%
TOTAL	2,886	2,986	2,758	2,708	2,430	-15.80%

Arts & Humanities	Summer 2010	Summer 2011	Summer 2012	Summer 2013	Summer 2014	10-14 % chg
Arabic	26	23	19	16	12	-53.85%
Art	903	886	780	770	768	-14.95%
Chinese	22	22	15	22	11	-50.00%
Creative Writing	42	62	67	62	61	45.24%
Dance	67	57	58	50	62	-7.46%
Drama	207	219	164	146	181	-12.56%
English for Speakers of Other Languages	401	435	346	267	234	-41.65%
French	163	133	109	86	78	-52.15%
German	84	44	71	25	30	-64.29%
Humanities	250	315	195	210	220	-12.00%
Japanese	71	59	30	18	54	-23.94%
Latin	29	17	42	.	.	.
Philosophy	913	986	936	780	835	-8.54%
Religion	86	52	63	47	67	-22.09%
Spanish	1,944	1,630	1,428	1,240	1,212	-37.65%
TOTAL	5,208	4,940	4,323	3,739	3,825	-26.56%

Source: Summer 4th Class Day Data (Second summer session)

**Course Enrollment (continued)
Summer 2010 - 2014**

Business Studies	Summer 2010	Summer 2011	Summer 2012	Summer 2013	Summer 2014	10-14 % chg
Accounting	978	1,034	993	1,064	1,147	17.28%
Business & Technical Communications	146	144	208	249	207	41.78%
Culinary Arts	71	144	111	114	104	46.48%
Financial Management	87	58	34	64	63	-27.59%
Hospitality Management	63	71	55	25	55	-12.70%
International Business	15	17	23	20	6	-60.00%
Management	475	473	489	458	468	-1.47%
Marketing	228	150	126	125	134	-41.23%
Meeting & Events Planning	10	12	9	17	6	-40.00%
Office Administration	230	210	143	145	152	-33.91%
Real Estate	132	154	105	120	162	22.73%
Travel & Tourism	15	13	13	20	13	-13.33%
TOTAL	2,450	2,480	2,309	2,421	2,517	2.73%
Communications	Summer 2010	Summer 2011	Summer 2012	Summer 2013	Summer 2014	10-14 % chg
English	4,206	3,795	3,608	3,527	3,331	-20.80%
Journalism	67	94	104	104	105	56.72%
Reading - Developmental	440	393	343	190	168	-61.82%
Speech	2,274	2,412	2,245	2,237	2,203	-3.12%
Study Skills	.	.	9	.	14	.
Writing - Developmental	294	338	309	193	180	-38.78%
TOTAL	7,281	7,032	6,618	6,251	6,001	-17.58%

Source: Summer 4th Class Day Data (Second summer session)

Course Enrollment (continued)
Summer 2010 - 2014

Computer Studies & Advanced Technology	Summer 2010	Summer 2011	Summer 2012	Summer 2013	Summer 2014	10-14 % chg
Architectural & Engineering CAD	221	220	184	209	233	5.43%
Computer Information Technology	500	466	471	505	569	13.80%
Computer Science	776	707	665	582	710	-8.51%
Electronics & Advanced Technologies	177	173	126	136	99	-44.07%
Land Surveying Technology/Geomatics	10	.	9	8	17	70.00%
Visual Communication	579	615	629	631	551	-4.84%
TOTAL	2,263	2,181	2,084	2,071	2,179	-3.71%
Health Sciences	Summer 2010	Summer 2011	Summer 2012	Summer 2013	Summer 2014	10-14 % chg
Allied Health Science	652	706	566	557	508	-22.09%
Dental Hygiene	14	18	15	17	11	-21.43%
Diagnostic Medical Imaging Radiology	149	185	204	198	173	16.11%
Emergency Medical Services Professions	258	258	293	319	250	-3.10%
Health & Kinesiology	1,177	1,236	1,079	984	874	-25.74%
Health Information Technology	86	147	93	61	78	-9.30%
Medical Lab Technology	119	180	159	153	133	11.76%
Nursing - Professional	354	409	314	338	335	-5.37%
Nursing - Vocational	179	255	160	154	162	-9.50%
Occupational Therapy Assistant	72	69	74	66	79	9.72%
Personal Fitness Trainer	6	7	4	6	11	83.33%
Pharmacy Technician	83	73	79	80	78	-6.02%
Physical Therapist Assistant	82	38	37	28	28	-65.85%
Sonography	157	171	143	133	135	-14.01%
Surgical Technology	56	58	60	68	54	-3.57%
Veterinary Technology	.	.	.	1	11	.
TOTAL	3,444	3,810	3,280	3,163	2,920	-15.21%

Source: Summer 4th Class Day Data (Second summer session)

**Course Enrollment (continued)
Summer 2010 - 2014**

Math & Sciences	Summer 2010	Summer 2011	Summer 2012	Summer 2013	Summer 2014	10-14 % chg
Astronomy	172	142	105	135	154	-10.47%
Biology	2,802	2,918	2,787	2,588	2,524	-9.92%
Biotechnology	32	7	31	20	47	46.88%
Chemistry	2,024	2,296	2,182	2,030	1,991	-1.63%
Engineering	59	51	40	45	38	-35.59%
Environmental Science & Technology	55	59	59	57	43	-21.82%
Geology	347	260	193	225	235	-32.28%
Mathematics	3,373	3,565	3,323	3,143	3,379	0.18%
Mathematics - Developmental	3,193	3,001	2,903	2,248	1,676	-47.51%
Physics	1,058	1,032	1,051	1,095	1,059	0.09%
TOTAL	13,115	13,331	12,674	11,586	11,146	-15.01%
Social & Behavioral Sciences	Summer 2010	Summer 2011	Summer 2012	Summer 2013	Summer 2014	10-14 % chg
Anthropology	432	329	294	262	252	-41.67%
Economics	2,337	2,075	1,891	1,773	1,622	-30.59%
Education Instruction	43	38	29	32	33	-23.26%
Geographic Information Systems	.	1	3	12	27	.
Geography	382	335	278	308	268	-29.84%
Government	5,426	5,038	4,637	4,718	4,436	-18.25%
History	5,945	6,050	5,301	4,512	4,348	-26.86%
Student Development	351	263	206	217	218	-37.89%
Psychology	1,937	1,746	1,543	1,481	1,402	-27.62%
Sociology	834	676	460	515	461	-44.72%
TOTAL	17,687	16,551	14,642	13,830	13,067	-26.12%
GRAND TOTAL (Course Enrollment)	54,334	53,311	48,688	45,769	44,085	-18.86%

Source: Summer 4th Class Day Data (Second summer session)

**Semester Credit Hours
Summer 2010 - 2014**

Applied Technologies, Multimedia, & Public Services	Summer 2010	Summer 2011	Summer 2012	Summer 2013	Summer 2014	10-14 % chg
American Sign Language Interpreter Training	.	861	671	805	839	.
Auto Body Collision Repair & Refinishing	116	174	166	154	152	31.03%
Automotive Technology & Outdoor Powered Equipment	792	984	784	744	918	15.91%
Building Construction Technology	662	682	465	560	448	-32.33%
Child Care & Development	719	541	493	352	247	-65.65%
Criminal Justice	463	465	505	475	407	-12.10%
Fire Protection Technology	1,256	1,416	1,289	1,227	1,043	-16.96%
Heating, AC, & Refrigeration Technology	165	66	183	177	33	-80.00%
Human Services	512	590	534	510	358	-30.08%
Jewelry	1,311	599	573	574	552	-57.89%
Music	200	196	168	172	164	-18.00%
Music Business, Performance & Technology	892	849	827	962	809	-9.30%
Paralegal	603	666	552	474	462	-23.38%
Photographic Technology	632	447	525	427	302	-52.22%
Radio-TV-Film	378	423	495	456	519	37.30%
Welding Technology	608	736	752	760	708	16.45%
TOTAL	9,309	9,695	8,982	8,829	7,961	-14.48%

Arts & Humanities	Summer 2010	Summer 2011	Summer 2012	Summer 2013	Summer 2014	10-14 % chg
Arabic	130	115	95	80	60	-53.85%
Art	2,709	2,658	2,340	2,310	2,304	-14.95%
Chinese	110	110	75	110	55	-50.00%
Creative Writing	126	186	201	186	183	45.24%
Dance	123	96	95	79	118	-4.07%
Drama	621	657	492	438	543	-12.56%
English for Speakers of Other Languages	1,203	1,305	1,038	801	702	-41.65%
French	619	495	441	350	324	-47.66%
German	344	220	303	125	150	-56.40%
Humanities	750	945	585	630	660	-12.00%
Japanese	355	295	150	90	270	-23.94%
Latin	145	85	210	.	.	.
Philosophy	2,739	2,958	2,808	2,340	2,505	-8.54%
Religion	258	156	189	141	201	-22.09%
Spanish	8,036	6,938	6,002	5,322	5,218	-35.07%
TOTAL	18,268	17,219	15,024	13,002	13,293	-27.23%

Source: Summer 4th Class Day Data (Second summer session)

Semester Credit Hours (continued)
Summer 2010 - 2014

Business Studies	Summer 2010	Summer 2011	Summer 2012	Summer 2013	Summer 2014	10-14 % chg
Accounting	2,952	3,117	2,991	3,208	3,458	17.14%
Business & Technical Communications	447	435	645	783	648	44.97%
Culinary Arts	191	372	298	293	271	41.88%
Financial Management	261	174	102	192	189	-27.59%
Hospitality Management	189	213	165	75	165	-12.70%
International Business	45	51	69	60	18	-60.00%
Management	1,425	1,419	1,467	1,374	1,404	-1.47%
Marketing	684	450	378	375	402	-41.23%
Meeting & Events Planning	30	36	27	51	18	-40.00%
Office Administration	557	511	362	348	378	-32.14%
Real Estate	430	516	353	310	390	-9.30%
Travel & Tourism	45	39	39	60	39	-13.33%
TOTAL	7,256	7,333	6,896	7,129	7,380	1.71%
Communications	Summer 2010	Summer 2011	Summer 2012	Summer 2013	Summer 2014	10-14 % chg
English	12,618	11,385	10,824	10,581	9,993	-20.80%
Journalism	201	282	312	312	315	56.72%
Reading - Developmental	1,316	1,179	1,029	570	502	-61.85%
Speech	6,822	7,236	6,735	6,711	6,609	-3.12%
Study Skills	.	.	27	.	42	.
Writing - Developmental	882	1,014	927	579	540	-38.78%
TOTAL	21,839	21,096	19,854	18,753	18,001	-17.57%

Source: Summer 4th Class Day Data (Second summer session)

**Semester Credit Hours (continued)
Summer 2010 - 2014**

Computer Studies & Advanced Technology	Summer 2010	Summer 2011	Summer 2012	Summer 2013	Summer 2014	10-14 % chg
Architectural & Engineering CAD	884	880	736	836	932	5.43%
Computer Information Technology	1,535	1,433	1,444	1,547	1,794	16.87%
Computer Science	2,345	2,143	2,013	1,766	2,153	-8.19%
Electronics & Advanced Technologies	651	653	461	516	377	-42.09%
Land Surveying Technology/Geomatics	30	.	27	24	51	70.00%
Visual Communication	2,166	2,221	2,319	2,288	1,960	-9.51%
TOTAL	7,611	7,330	7,000	6,977	7,267	-4.52%
Health Sciences	Summer 2010	Summer 2011	Summer 2012	Summer 2013	Summer 2014	10-14 % chg
Allied Health Science	1,596	1,755	1,419	1,363	1,189	-25.50%
Dental Hygiene	28	36	30	34	22	-21.43%
Diagnostic Medical Imaging Radiology	387	473	531	516	449	16.02%
Emergency Medical Services Professions	667	683	782	817	659	-1.20%
Health & Kinesiology	1,695	1,812	1,561	1,506	1,282	-24.37%
Health Information Technology	241	389	257	130	177	-26.56%
Medical Lab Technology	227	325	311	308	287	26.43%
Nursing - Professional	779	817	603	650	570	-26.83%
Nursing - Vocational	725	1,065	672	651	672	-7.31%
Occupational Therapy Assistant	180	172	185	165	175	-2.78%
Personal Fitness Trainer	12	14	8	12	22	83.33%
Pharmacy Technician	259	223	245	244	237	-8.49%
Physical Therapist Assistant	220	152	148	112	112	-49.09%
Sonography	423	439	375	345	357	-15.60%
Surgical Technology	280	290	300	340	270	-3.57%
Veterinary Technology	.	.	.	1	11	.
TOTAL	7,719	8,645	7,427	7,194	6,491	-15.91%

Source: Summer 4th Class Day Data (Second summer session)

**Semester Credit Hours (continued)
Summer 2010 - 2014**

Math & Sciences	Summer 2010	Summer 2011	Summer 2012	Summer 2013	Summer 2014	10-14 % chg
Astronomy	535	448	337	427	484	-9.53%
Biology	8,425	8,641	8,239	7,710	7,472	-11.31%
Biotechnology	128	28	124	80	146	14.06%
Chemistry	4,064	4,608	4,384	4,080	4,007	-1.40%
Engineering	155	131	105	114	93	-40.00%
Environmental Science & Technology	166	178	179	171	130	-21.69%
Geology	1,157	887	671	777	819	-29.21%
Mathematics	11,145	11,812	11,138	10,466	11,303	1.42%
Mathematics - Developmental	9,569	8,981	8,707	6,740	5,028	-47.46%
Physics	4,232	4,128	4,204	4,380	4,236	0.09%
TOTAL	39,576	39,842	38,088	34,945	33,718	-14.80%
Social & Behavioral Sciences	Summer 2010	Summer 2011	Summer 2012	Summer 2013	Summer 2014	10-14 % chg
Anthropology	1,296	987	882	786	756	-41.67%
Economics	7,011	6,225	5,673	5,319	4,866	-30.59%
Education Instruction	129	114	87	96	99	-23.26%
Geographic Information Systems	.	2	4	29	95	.
Geography	1,172	1,028	868	958	844	-27.99%
Government	16,278	15,114	13,911	14,154	13,308	-18.25%
History	17,835	18,150	15,903	13,536	13,044	-26.86%
Student Development	655	449	330	525	408	-37.71%
Psychology	5,811	5,238	4,629	4,443	4,206	-27.62%
Sociology	2,502	2,028	1,380	1,545	1,383	-44.72%
TOTAL	52,689	49,335	43,667	41,391	39,009	-25.96%
GRAND TOTAL (Semester Credit Hours)	164,267	160,495	146,938	138,220	133,120	-18.96%

Source: Summer 4th Class Day Data (Second summer session)

**Contact Hours
Summer 2010 - 2014**

Applied Technologies, Multimedia, & Public Services	Summer 2010	Summer 2011	Summer 2012	Summer 2013	Summer 2014	10-14 % chg
American Sign Language Interpreter Training	.	21,104	16,304	20,080	18,272	.
Auto Body Collision Repair & Refinishing	2,720	3,968	4,608	3,616	3,584	31.76%
Automotive Technology & Outdoor Powered Equipment	20,192	26,240	21,664	19,840	25,952	28.53%
Building Construction Technology	15,808	15,296	11,408	12,192	9,888	-37.45%
Child Care & Development	16,864	13,120	11,360	8,304	5,616	-66.70%
Criminal Justice	12,704	12,608	13,840	12,576	11,200	-11.84%
Fire Protection Technology	21,824	24,896	22,352	23,088	18,416	-15.62%
Heating, AC, & Refrigeration Technology	2,640	1,056	2,928	2,832	528	-80.00%
Human Services	13,728	15,840	13,856	13,440	9,792	-28.67%
Jewelry	30,928	12,912	13,008	12,384	11,520	-62.75%
Music	4,800	4,704	4,032	4,128	3,936	-18.00%
Music Business, Performance & Technology	15,808	14,680	14,480	15,968	14,176	-10.32%
Paralegal	9,648	10,656	8,832	7,584	7,392	-23.38%
Photographic Technology	26,640	19,088	23,120	17,088	13,584	-49.01%
Radio-TV-Film	9,376	9,872	10,912	9,568	11,056	17.92%
Welding Technology	14,720	17,792	18,048	18,240	16,992	15.43%
TOTAL	218,400	223,832	210,752	200,928	181,904	-16.71%

Arts & Humanities	Summer 2010	Summer 2011	Summer 2012	Summer 2013	Summer 2014	10-14 % chg
Arabic	2,080	1,840	1,520	1,280	960	-53.85%
Art	58,608	56,496	50,016	46,992	47,280	-19.33%
Chinese	1,760	1,760	1,200	1,760	880	-50.00%
Creative Writing	2,016	2,976	3,216	2,976	2,928	45.24%
Dance	5,008	3,984	3,968	3,328	3,872	-22.68%
Drama	11,216	11,440	8,704	7,328	8,944	-20.26%
English for Speakers of Other Languages	25,664	27,840	22,144	17,088	14,976	-41.65%
French	9,904	7,920	7,056	5,600	5,184	-47.66%
German	5,504	3,520	4,848	2,000	2,400	-56.40%
Humanities	12,000	15,120	9,360	10,080	10,560	-12.00%
Japanese	5,680	4,720	2,400	1,440	4,320	-23.94%
Latin	2,320	1,360	3,360	.	.	.
Philosophy	43,824	47,328	44,928	37,440	40,080	-8.54%
Religion	4,128	2,496	3,024	2,256	3,216	-22.09%
Spanish	128,576	111,008	96,032	85,152	83,488	-35.07%
TOTAL	318,288	299,808	261,776	224,720	229,088	-28.02%

Source: Summer 4th Class Day Data (Second summer session)

**Contact Hours (continued)
Summer 2010 - 2014**

Business Studies	Summer 2010	Summer 2011	Summer 2012	Summer 2013	Summer 2014	10-14 % chg
Accounting	58,368	63,456	61,008	64,928	71,024	21.68%
Business & Technical Communications	7,440	6,960	10,320	12,528	10,368	39.35%
Culinary Arts	4,656	8,192	7,072	7,120	6,832	46.74%
Financial Management	4,176	2,784	1,632	3,072	3,024	-27.59%
Hospitality Management	4,304	5,264	4,304	2,032	4,112	-4.46%
International Business	720	816	1,104	1,248	288	-60.00%
Management	22,800	22,704	23,952	22,464	22,464	-1.47%
Marketing	10,944	7,200	6,048	6,000	6,912	-36.84%
Meeting & Events Planning	480	576	432	816	288	-40.00%
Office Administration	13,376	12,304	8,432	8,912	9,136	-31.70%
Real Estate	6,880	8,256	5,648	4,960	6,240	-9.30%
Travel & Tourism	720	624	624	960	624	-13.33%
TOTAL	134,864	139,136	130,576	135,040	141,312	4.78%
Communications	Summer 2010	Summer 2011	Summer 2012	Summer 2013	Summer 2014	10-14 % chg
English	201,888	182,160	173,184	169,296	159,888	-20.80%
Journalism	3,216	4,512	5,200	5,296	5,360	66.67%
Reading - Developmental	23,792	21,136	18,368	10,144	9,104	-61.74%
Speech	109,152	115,776	107,760	107,376	105,744	-3.12%
Study Skills	.	.	432	.	672	.
Writing - Developmental	16,464	18,784	17,296	10,672	10,160	-38.29%
TOTAL	354,512	342,368	321,808	302,784	290,928	-17.94%

Source: Summer 4th Class Day Data (Second summer session)

**Contact Hours (continued)
Summer 2010 - 2014**

Computer Studies & Advanced Technology	Summer 2010	Summer 2011	Summer 2012	Summer 2013	Summer 2014	10-14 % chg
Architectural & Engineering CAD	21,216	21,120	17,664	20,064	22,368	5.43%
Computer Information Technology	33,376	31,216	31,440	33,616	39,344	17.88%
Computer Science	50,208	45,952	43,136	37,888	46,176	-8.03%
Electronics & Advanced Technologies	15,760	15,648	11,008	12,512	8,592	-45.48%
Land Surveying Technology/Geomatics	480	.	432	384	816	70.00%
Visual Communication	53,584	57,584	59,920	60,320	50,784	-5.23%
TOTAL	174,624	171,520	163,600	164,784	168,080	-3.75%
Health Sciences	Summer 2010	Summer 2011	Summer 2012	Summer 2013	Summer 2014	10-14 % chg
Allied Health Science	25,536	28,080	22,704	21,808	19,024	-25.50%
Dental Hygiene	672	864	720	816	528	-21.43%
Diagnostic Medical Imaging Radiology	17,504	21,056	24,064	23,440	20,208	15.45%
Emergency Medical Services Professions	25,816	25,181	29,603	31,754	21,728	-15.84%
Health & Kinesiology	56,496	59,328	51,792	47,232	41,952	-25.74%
Health Information Technology	5,120	7,664	5,776	5,104	7,408	44.69%
Medical Lab Technology	13,120	20,672	18,704	18,144	15,632	19.15%
Nursing - Professional	29,072	32,016	23,120	25,840	20,272	-30.27%
Nursing - Vocational	25,216	37,120	23,552	22,960	23,264	-7.74%
Occupational Therapy Assistant	9,168	8,000	9,296	8,064	8,896	-2.97%
Personal Fitness Trainer	1,344	1,568	896	1,344	2,464	83.33%
Pharmacy Technician	8,624	8,112	8,464	7,968	8,368	-2.97%
Physical Therapist Assistant	8,896	4,256	4,144	3,136	3,136	-64.75%
Sonography	12,112	12,800	11,824	10,400	11,136	-8.06%
Surgical Technology	11,200	11,600	12,000	13,600	10,800	-3.57%
Veterinary Technology	.	.	.	32	352	.
TOTAL	249,896	278,317	246,659	241,642	215,168	-13.90%

Source: Summer 4th Class Day Data (Second summer session)

**Contact Hours (continued)
Summer 2010 - 2014**

Math & Sciences	Summer 2010	Summer 2011	Summer 2012	Summer 2013	Summer 2014	10-14 % chg
Astronomy	9,168	7,872	6,096	7,536	8,448	-7.85%
Biology	182,176	189,104	179,968	167,760	161,904	-11.13%
Biotechnology	4,480	784	4,816	4,256	6,272	40.00%
Chemistry	97,152	110,208	104,736	97,440	95,568	-1.63%
Engineering	2,480	2,096	1,680	1,824	1,760	-29.03%
Environmental Science & Technology	2,928	3,120	3,408	2,736	2,352	-19.67%
Geology	22,224	17,616	13,680	15,696	16,752	-24.62%
Mathematics	178,320	188,992	178,208	167,456	180,848	1.42%
Mathematics - Developmental	204,112	189,696	183,888	142,864	106,896	-47.63%
Physics	101,568	99,072	100,896	105,120	101,664	0.09%
TOTAL	804,608	808,560	777,376	712,688	682,464	-15.18%
Social & Behavioral Sciences	Summer 2010	Summer 2011	Summer 2012	Summer 2013	Summer 2014	10-14 % chg
Anthropology	22,176	16,320	14,112	12,576	12,096	-45.45%
Economics	112,176	99,600	90,768	85,104	77,856	-30.59%
Education Instruction	2,064	1,824	1,392	1,536	1,584	-23.26%
Geographic Information Systems	.	224	352	1,424	2,544	.
Geography	19,584	17,184	14,976	16,416	14,784	-24.51%
Government	260,448	242,720	222,576	226,464	212,928	-18.25%
History	285,360	290,400	254,448	216,576	208,704	-26.86%
Student Development	12,072	8,544	6,432	8,904	7,512	-37.77%
Psychology	92,976	83,808	74,064	71,088	67,296	-27.62%
Sociology	40,032	32,448	22,080	24,720	22,128	-44.72%
TOTAL	846,888	793,072	701,200	664,808	627,432	-25.91%
GRAND TOTAL (Contact Hours)	3,102,080	3,056,613	2,813,747	2,647,394	2,536,376	-18.24%

Source: Summer 4th Class Day Data (Second summer session)

**Distance Learning Course Enrollment and Contact Hours
Summer 2010 - 2014**

	Summer 2010	Summer 2011	Summer 2012	Summer 2013	Summer 2014	10-14 % chg
COURSE ENROLLMENT						
Directed Study (DIR)	43
Hybrid (HYD)	358	540	596	666	816	127.93%
Instructional Television (ITV)	569	346	300	235	56	-90.16%
Online (ONL)	10,393	11,089	10,618	10,843	11,061	6.43%
Print-Based (PRN)	353	359	317	270	127	-64.02%
TOTAL	11,716	12,334	11,831	12,014	12,060	2.94%

	Summer 2010	Summer 2011	Summer 2012	Summer 2013	Summer 2014	10-14 % chg
CONTACT HOURS						
Directed Study (DIR)	6,272
Hybrid (HYD)	18,448	26,448	30,000	34,528	42,624	131.05%
Instructional Television (ITV)	26,592	16,208	14,272	11,280	2,688	-89.89%
Online (ONL)	517,048	550,216	528,608	536,360	548,808	6.14%
Print-Based (PRN)	16,944	17,232	15,216	12,960	6,096	-64.02%
TOTAL	585,304	610,104	588,096	595,128	600,216	2.55%

NOTE: Refer to the Glossary for definitions of terms.

Source: Summer 4th Class Day Data (Second summer session)

**Student Headcount, Course Enrollment, Contact Hours, and Semester
Credit Hours by Location
Fall 2014**

Location	Student Headcount	Course Enrollment	Contact Hours	Semester Credit Hours
Cypress Creek Campus	4,585	9,046	497,200	26,881
Eastview Campus	3,367	6,104	433,771	17,570
Elgin Campus	383	688	34,688	1,987
Hays Campus	1,690	3,624	191,232	10,829
Highland Campus	3,813	5,947	332,320	18,695
Northridge Campus	7,855	14,677	886,616	44,355
Pinnacle Campus	2,202	4,174	224,656	12,657
Rio Grande Campus	6,371	12,351	716,176	38,069
Riverside Campus	5,375	9,941	594,080	30,388
Round Rock Campus	4,610	9,166	563,680	27,447
South Austin Campus	3,214	5,311	292,384	15,917
Distance Learning Centers	9,590 788	14,894 1,329	759,888 69,088	44,356 4,035
Site-Based Instruction	3,952	6,630	367,856	19,948

NOTE: Refer to the Glossary for definitions of terms. Students who attend multiple locations are counted once at each location. Students who enroll in multiple courses are counted once for each course.

Source: Fall 12th Class Day Data

Course Enrollment
Fall 2010 - 2014

Applied Technologies, Multimedia, & Public Services	Fall 2010	Fall 2011	Fall 2012	Fall 2013	Fall 2014	10-14 % chg
American Sign Language Interpreter Training	517	553	526	524	580	12.19%
Auto Body Collision Repair & Refinishing	113	123	108	120	121	7.08%
Automotive Technology & Outdoor Powered Equipment	631	665	609	605	639	1.27%
Building Construction Technology	492	467	405	390	392	-20.33%
Child Care & Development	479	414	366	326	320	-33.19%
Criminal Justice	1,072	1,156	1,025	966	994	-7.28%
Fire Protection Technology	312	310	300	230	242	-22.44%
Heating, AC, & Refrigeration Technology	271	281	288	279	241	-11.07%
Human Services	438	478	451	456	450	2.74%
Jewelry	113	131	144	141	130	15.04%
Music	897	850	871	875	854	-4.79%
Music Business, Performance & Technology	575	559	542	502	481	-16.35%
Paralegal	350	358	349	366	307	-12.29%
Photographic Technology	579	585	504	465	387	-33.16%
Radio-TV-Film	382	403	431	464	453	18.59%
Welding Technology	405	419	430	431	485	19.75%
TOTAL	7,626	7,752	7,349	7,140	7,076	-7.21%

Arts & Humanities	Fall 2010	Fall 2011	Fall 2012	Fall 2013	Fall 2014	10-14 % chg
Arabic	44	53	35	38	34	-22.73%
Art	2,323	2,506	2,340	2,194	2,164	-6.84%
Chinese	32	28	36	38	40	25.00%
Creative Writing	234	229	232	210	171	-26.92%
Dance	200	214	196	198	160	-20.00%
Drama	561	553	533	489	525	-6.42%
English for Speakers of Other Languages	974	1,059	997	780	643	-33.98%
French	350	322	303	273	255	-27.14%
German	145	114	115	91	85	-41.38%
Humanities	500	684	640	633	622	24.40%
Japanese	236	221	176	164	170	-27.97%
Latin	83	74	73	46	29	-65.06%
Philosophy	2,391	2,321	2,295	2,194	2,279	-4.68%
Religion	129	113	119	84	78	-39.53%
Russian	54	43	41	35	36	-33.33%
Spanish	2,683	2,494	2,184	2,015	1,902	-29.11%
TOTAL	10,939	11,028	10,315	9,482	9,193	-15.96%

Source: Fall 12th Class Day Data

Course Enrollment (continued)
Fall 2010 - 2014

Business Studies	Fall 2010	Fall 2011	Fall 2012	Fall 2013	Fall 2014	10-14 % chg
Accounting	1,788	1,732	1,686	1,756	1,791	0.17%
Business & Technical Communications	251	363	383	410	390	55.38%
Culinary Arts	334	367	375	379	339	1.50%
Financial Management	178	144	106	128	116	-34.83%
Hospitality Management	238	239	223	225	243	2.10%
International Business	98	98	53	37	61	-37.76%
Management	1,600	1,480	1,273	1,229	1,192	-25.50%
Marketing	536	451	362	394	372	-30.60%
Meeting & Events Planning	50	36	40	20	25	-50.00%
Office Administration	540	470	468	396	308	-42.96%
Real Estate	330	266	285	256	307	-6.97%
Travel & Tourism	35	42	39	20	21	-40.00%
TOTAL	5,978	5,688	5,293	5,250	5,165	-13.60%

Communications	Fall 2010	Fall 2011	Fall 2012	Fall 2013	Fall 2014	10-14 % chg
English	11,802	12,045	12,142	12,717	12,450	5.49%
Journalism	276	289	290	250	253	-8.33%
Reading - Developmental	1,484	1,604	1,236	916	837	-43.60%
Speech	3,506	3,676	3,715	3,776	3,848	9.75%
Study Skills	104	99	107	86	54	-48.08%
Writing - Developmental	966	1,083	1,090	994	857	-11.28%
TOTAL	18,138	18,796	18,580	18,739	18,299	0.89%

Source: Fall 12th Class Day Data

Course Enrollment (continued)
Fall 2010 - 2014

Computer Studies & Advanced Technology	Fall 2010	Fall 2011	Fall 2012	Fall 2013	Fall 2014	10-14 % chg
Architectural & Engineering CAD	539	512	489	497	469	-12.99%
Computer Information Technology	1,547	1,564	1,569	1,554	1,856	19.97%
Computer Science	1,750	1,699	1,632	1,563	1,723	-1.54%
Electronics & Advanced Technologies	393	400	360	306	289	-26.46%
Land Surveying Technology/Geomatics	16	41	32	35	45	181.25%
Visual Communication	1,532	1,501	1,497	1,464	1,364	-10.97%
TOTAL	5,777	5,717	5,579	5,419	5,746	-0.54%

Health Sciences	Fall 2010	Fall 2011	Fall 2012	Fall 2013	Fall 2014	10-14 % chg
Allied Health Science	1,287	1,232	1,136	1,086	1,031	-19.89%
Dental Hygiene	129	144	127	136	111	-13.95%
Diagnostic Medical Imaging Radiology	308	340	349	362	350	13.64%
Emergency Medical Services Professions	349	388	387	377	383	9.74%
Health & Kinesiology	2,676	2,696	2,184	1,834	1,695	-36.66%
Health Information Technology	136	174	170	202	225	65.44%
Medical Lab Technology	151	194	179	168	183	21.19%
Nursing - Professional	2,300	2,164	1,792	1,826	1,933	-15.96%
Nursing - Vocational	355	446	409	343	317	-10.70%
Occupational Therapy Assistant	103	120	108	106	102	-0.97%
Personal Fitness Trainer	46	51	44	48	45	-2.17%
Pharmacy Technician	150	143	160	156	141	-6.00%
Physical Therapist Assistant	121	119	128	146	143	18.18%
Sonography	184	206	175	168	172	-6.52%
Surgical Technology	118	118	118	124	118	0.00%
Veterinary Technology	.	.	.	1	51	.
TOTAL	8,413	8,535	7,466	7,083	7,000	-16.80%

Source: Fall 12th Class Day Data

Course Enrollment (continued)
Fall 2010 - 2014

Math & Sciences	Fall 2010	Fall 2011	Fall 2012	Fall 2013	Fall 2014	10-14 % chg
Astronomy	379	408	346	364	349	-7.92%
Biology	6,775	6,725	6,543	6,452	6,372	-5.95%
Biotechnology	74	67	83	53	83	12.16%
Chemistry	3,953	4,079	3,754	3,567	3,615	-8.55%
Engineering	162	157	161	157	139	-14.20%
Environmental Science & Technology	273	236	198	197	204	-25.27%
Geology	697	621	493	522	555	-20.37%
Mathematics	7,639	7,440	7,508	7,207	7,575	-0.84%
Mathematics - Developmental	9,109	8,822	8,215	6,659	5,237	-42.51%
Military Science	27	23	20	15	12	-55.56%
Physics	1,066	1,023	1,037	954	949	-10.98%
TOTAL	30,154	29,601	28,358	26,147	25,090	-16.79%
Social & Behavioral Sciences	Fall 2010	Fall 2011	Fall 2012	Fall 2013	Fall 2014	10-14 % chg
Anthropology	1,058	970	797	746	736	-30.43%
Economics	2,580	2,406	2,420	2,425	2,458	-4.73%
Education Instruction	321	186	180	166	168	-47.66%
Geography	872	686	636	568	523	-40.02%
Geographic Information Systems	56	50	62	72	83	48.21%
Government	7,663	7,361	7,180	7,618	7,448	-2.81%
History	8,586	8,333	8,008	7,332	7,725	-10.03%
Student Development	1,582	1,848	1,305	1,083	1,084	-31.48%
Psychology	5,331	5,411	5,013	4,639	4,368	-18.06%
Sociology	2,361	2,330	1,952	1,886	1,720	-27.15%
TOTAL	30,410	29,581	27,553	26,535	26,313	-13.47%
GRAND TOTAL (Course Enrollment)	117,435	116,698	110,493	105,795	103,882	-11.54%

Source: Fall 12th Class Day Data

**Semester Credit Hours
Fall 2010 - 2014**

Applied Technologies, Multimedia, & Public Services	Fall 2010	Fall 2011	Fall 2012	Fall 2013	Fall 2014	10-14 % chg
American Sign Language Interpreter Training	1,889	2,038	1,881	1,871	2,069	9.53%
Auto Body Collision Repair & Refinishing	385	438	370	416	422	9.61%
Automotive Technology & Outdoor Powered Equipment	2,524	2,660	2,426	2,412	2,549	0.99%
Building Construction Technology	1,780	1,693	1,497	1,446	1,438	-19.21%
Child Care & Development	1,567	1,365	1,208	1,082	1,033	-34.08%
Criminal Justice	3,261	3,518	3,133	2,979	3,029	-7.11%
Fire Protection Technology	1,082	1,070	1,041	810	851	-21.35%
Heating, AC, & Refrigeration Technology	1,056	1,096	1,126	1,090	934	-11.55%
Human Services	1,336	1,451	1,388	1,401	1,381	3.37%
Jewelry	452	524	576	564	520	15.04%
Music	1,915	1,934	2,048	2,116	2,061	7.62%
Music Business, Performance & Technology	1,697	1,670	1,643	1,540	1,461	-13.91%
Paralegal	1,050	1,074	1,047	1,098	921	-12.29%
Photographic Technology	1,788	1,785	1,516	1,407	1,166	-34.79%
Radio-TV-Film	1,146	1,209	1,293	1,392	1,359	18.59%
Welding Technology	1,620	1,676	1,720	1,724	1,940	19.75%
TOTAL	24,548	25,201	23,913	23,348	23,134	-5.76%

Arts & Humanities	Fall 2010	Fall 2011	Fall 2012	Fall 2013	Fall 2014	10-14 % chg
Arabic	184	245	153	164	152	-17.39%
Art	6,969	7,518	7,020	6,582	6,492	-6.84%
Chinese	138	128	158	162	168	21.74%
Creative Writing	702	687	696	630	513	-26.92%
Dance	357	399	379	412	335	-6.16%
Drama	1,667	1,641	1,583	1,443	1,539	-7.68%
English for Speakers of Other Languages	2,922	3,177	2,991	2,340	1,929	-33.98%
French	1,582	1,488	1,417	1,267	1,201	-24.08%
German	685	548	543	421	403	-41.17%
Humanities	1,500	2,052	1,920	1,899	1,866	24.40%
Japanese	1,074	1,023	808	764	784	-27.00%
Latin	391	356	333	216	135	-65.47%
Philosophy	7,173	6,963	6,885	6,582	6,837	-4.68%
Religion	387	339	357	252	234	-39.53%
Russian	246	205	205	161	168	-31.71%
Spanish	12,529	11,684	10,162	9,393	8,868	-29.22%
TOTAL	38,506	38,453	35,610	32,688	31,624	-17.87%

Source: Fall 12th Class Day Data

**Semester Credit Hours (continued)
Fall 2010 - 2014**

Business Studies	Fall 2010	Fall 2011	Fall 2012	Fall 2013	Fall 2014	10-14 % chg
Accounting	5,446	5,272	5,131	5,339	5,441	-0.09%
Business & Technical Communications	771	1,114	1,182	1,284	1,216	57.72%
Culinary Arts	890	1,010	1,038	1,044	925	3.93%
Financial Management	534	432	304	376	348	-34.83%
Hospitality Management	714	717	669	675	729	2.10%
International Business	294	294	159	111	183	-37.76%
Management	4,800	4,440	3,819	3,687	3,576	-25.50%
Marketing	1,608	1,353	1,086	1,182	1,116	-30.60%
Meeting & Events Planning	150	108	120	60	75	-50.00%
Office Administration	1,375	1,214	1,192	985	772	-43.85%
Real Estate	1,086	869	767	659	786	-27.62%
Travel & Tourism	105	126	117	60	63	-40.00%
TOTAL	17,773	16,949	15,584	15,462	15,230	-14.31%

Communications	Fall 2010	Fall 2011	Fall 2012	Fall 2013	Fall 2014	10-14 % chg
English	35,406	36,135	36,426	38,151	37,350	5.49%
Journalism	828	867	870	750	759	-8.33%
Reading - Developmental	4,452	4,812	3,708	2,748	2,511	-43.60%
Speech	10,518	11,028	11,145	11,328	11,544	9.75%
Study Skills	274	268	295	241	162	-40.88%
Writing - Developmental	2,802	3,025	2,990	2,706	2,345	-16.31%
TOTAL	54,280	56,135	55,434	55,924	54,671	0.72%

Source: Fall 12th Class Day Data

Semester Credit Hours (continued)
Fall 2010 - 2014

Computer Studies & Advanced Technology	Fall 2010	Fall 2011	Fall 2012	Fall 2013	Fall 2014	10-14 % chg
Architectural & Engineering CAD	2,156	2,048	1,956	1,988	1,876	-12.99%
Computer Information Technology	4,893	4,947	4,933	4,875	5,868	19.93%
Computer Science	5,332	5,181	4,984	4,780	5,278	-1.01%
Electronics & Advanced Technologies	1,404	1,421	1,303	1,155	1,066	-24.07%
Land Surveying Technology/Geomatics	53	124	96	105	135	154.72%
Visual Communication	5,648	5,521	5,511	5,415	4,989	-11.67%
TOTAL	19,486	19,242	18,783	18,318	19,212	-1.41%

Health Sciences	Fall 2010	Fall 2011	Fall 2012	Fall 2013	Fall 2014	10-14 % chg
Allied Health Science	3,082	2,965	2,739	2,521	2,357	-23.52%
Dental Hygiene	340	378	335	357	295	-13.24%
Diagnostic Medical Imaging Radiology	888	978	1,004	1,046	1,006	13.29%
Emergency Medical Services Professions	912	1,015	1,022	1,015	1,032	13.16%
Health & Kinesiology	3,560	3,537	2,938	2,494	2,300	-35.39%
Health Information Technology	384	470	456	559	619	61.20%
Medical Lab Technology	393	516	481	438	468	19.08%
Nursing - Professional	5,116	5,045	4,373	4,409	4,752	-7.11%
Nursing - Vocational	1,052	1,382	1,196	989	952	-9.51%
Occupational Therapy Assistant	297	340	310	303	282	-5.05%
Personal Fitness Trainer	152	169	146	160	149	-1.97%
Pharmacy Technician	415	394	444	425	385	-7.23%
Physical Therapist Assistant	434	420	451	528	514	18.43%
Sonography	500	554	479	454	475	-5.00%
Surgical Technology	398	398	398	452	422	6.03%
Veterinary Technology	.	.	.	1	132	.
TOTAL	17,923	18,561	16,772	16,151	16,140	-9.95%

Source: Fall 12th Class Day Data

**Semester Credit Hours (continued)
Fall 2010 - 2014**

Math & Sciences	Fall 2010	Fall 2011	Fall 2012	Fall 2013	Fall 2014	10-14 % chg
Astronomy	1,197	1,304	1,117	1,181	1,133	-5.35%
Biology	20,389	20,444	19,884	19,450	19,356	-5.07%
Biotechnology	242	209	257	163	293	21.07%
Chemistry	7,925	8,173	7,518	7,147	7,267	-8.30%
Engineering	398	372	394	374	326	-18.09%
Environmental Science & Technology	827	737	600	604	612	-26.00%
Geology	2,440	2,200	1,745	1,858	1,956	-19.84%
Mathematics	24,722	24,128	24,359	23,359	24,620	-0.41%
Mathematics - Developmental	26,485	25,710	23,972	19,520	16,196	-38.85%
Military Science	54	46	40	30	24	-55.56%
Physics	4,246	4,092	4,148	3,816	3,796	-10.60%
TOTAL	88,925	87,415	84,034	77,502	75,579	-15.01%
Social & Behavioral Sciences	Fall 2010	Fall 2011	Fall 2012	Fall 2013	Fall 2014	10-14 % chg
Anthropology	3,174	2,910	2,391	2,238	2,208	-30.43%
Economics	7,740	7,218	7,260	7,275	7,374	-4.73%
Education Instruction	963	558	540	498	504	-47.66%
Geography	2,665	2,125	1,985	1,779	1,627	-38.95%
Geographic Information Systems	175	175	219	265	294	68.00%
Government	22,989	22,083	21,540	22,854	22,344	-2.81%
History	25,758	24,999	24,024	21,996	23,175	-10.03%
Student Development	2,614	3,018	2,243	1,951	1,754	-32.90%
Psychology	15,993	16,233	15,039	13,917	13,104	-18.06%
Sociology	7,083	6,990	5,856	5,658	5,160	-27.15%
TOTAL	89,154	86,309	81,097	78,431	77,544	-13.02%
GRAND TOTAL (Semester Credit Hours)	350,595	348,265	331,227	317,824	313,134	-10.68%

Source: Fall 12th Class Day Data

**Contact Hours
Fall 2010 - 2014**

Applied Technologies, Multimedia, & Public Services	Fall 2010	Fall 2011	Fall 2012	Fall 2013	Fall 2014	10-14 % chg
American Sign Language Interpreter Training	46,736	50,368	46,752	41,104	45,216	-3.25%
Auto Body Collision Repair & Refinishing	9,344	11,424	9,792	11,104	11,040	18.15%
Automotive Technology & Outdoor Powered Equipment	62,560	66,432	60,224	61,248	65,632	4.91%
Building Construction Technology	40,320	38,624	33,312	32,336	31,888	-20.91%
Child Care & Development	36,720	30,480	26,720	23,888	22,576	-38.52%
Music Business, Performance & Technology	36,416	36,048	35,760	32,960	31,808	-12.65%
Criminal Justice	54,672	57,696	53,520	49,648	51,088	-6.56%
Fire Protection Technology	22,896	22,496	22,096	17,568	18,416	-19.57%
Heating, AC, & Refrigeration Technology	26,464	27,424	28,064	27,200	23,616	-10.76%
Human Services	24,192	25,392	26,992	26,880	26,400	9.13%
Jewelry	10,848	12,576	13,824	13,536	12,480	15.04%
Music	40,968	38,608	39,560	40,192	39,176	-4.37%
Paralegal	19,440	21,024	19,632	21,408	20,016	2.96%
Photographic Technology	71,296	72,848	62,864	58,144	47,824	-32.92%
Radio-TV-Film	24,464	26,432	27,344	29,392	28,896	18.12%
Welding Technology	38,880	40,352	41,408	41,504	46,688	20.08%
TOTAL	566,216	578,224	547,864	528,112	522,760	-7.67%

Arts & Humanities	Fall 2010	Fall 2011	Fall 2012	Fall 2013	Fall 2014	10-14 % chg
Arabic	2,944	3,920	2,448	2,624	2,432	-17.39%
Art	149,568	161,232	145,776	133,632	130,704	-12.61%
Chinese	2,208	2,048	2,528	2,592	2,688	21.74%
Creative Writing	11,232	10,992	11,136	10,080	8,208	-26.92%
Dance	12,320	12,992	11,936	11,872	8,960	-27.27%
Drama	33,072	31,296	29,824	26,464	28,736	-13.11%
English for Speakers of Other Languages	62,480	67,968	64,016	50,112	41,248	-33.98%
French	25,312	23,808	22,672	20,272	19,216	-24.08%
German	10,960	8,768	8,688	6,736	6,448	-41.17%
Humanities	24,000	32,832	30,720	30,384	29,856	24.40%
Japanese	17,184	16,368	12,928	12,224	12,544	-27.00%
Latin	6,256	5,696	5,328	3,456	2,160	-65.47%
Philosophy	114,768	111,408	110,160	105,312	109,392	-4.68%
Religion	6,192	5,424	5,712	4,032	3,744	-39.53%
Russian	3,936	3,280	3,280	2,576	2,688	-31.71%
Spanish	200,640	186,944	162,592	150,288	141,888	-29.28%
TOTAL	683,072	684,976	629,744	572,656	550,912	-19.35%

Source: Fall 12th Class Day Data

**Contact Hours (continued)
Fall 2010 - 2014**

Business Studies	Fall 2010	Fall 2011	Fall 2012	Fall 2013	Fall 2014	10-14 % chg
Accounting	110,656	107,744	104,448	107,696	112,528	1.69%
Business & Technical Communications	12,336	18,400	18,912	20,544	19,456	57.72%
Culinary Arts	21,488	25,312	26,432	30,144	25,600	19.14%
Financial Management	8,544	6,912	4,864	6,016	5,568	-34.83%
Hospitality Management	14,768	13,952	13,344	12,128	13,568	-8.13%
International Business	4,704	4,704	2,544	1,776	3,504	-25.51%
Management	77,760	71,520	61,584	58,992	57,696	-25.80%
Marketing	25,728	21,648	17,376	18,912	18,816	-26.87%
Meeting & Events Planning	2,400	1,728	1,920	960	1,200	-50.00%
Office Administration	32,272	28,656	28,544	23,776	18,544	-42.54%
Real Estate	17,376	13,904	12,272	10,544	12,576	-27.62%
Travel & Tourism	1,792	2,240	2,048	960	1,008	-43.75%
TOTAL	329,824	316,720	294,288	292,448	290,064	-12.05%

Communications	Fall 2010	Fall 2011	Fall 2012	Fall 2013	Fall 2014	10-14 % chg
English	566,496	578,160	582,816	610,416	597,600	5.49%
Journalism	13,664	14,496	14,544	12,416	12,544	-8.20%
Reading - Developmental	82,704	89,264	67,712	50,352	49,296	-40.39%
Speech	168,288	176,448	178,320	181,248	184,704	9.75%
Study Skills	4,384	4,288	4,720	3,856	2,592	-40.88%
Writing - Developmental	53,264	56,528	55,584	51,152	44,352	-16.73%
TOTAL	888,800	919,184	903,696	909,440	891,088	0.26%

Source: Fall 12th Class Day Data

**Contact Hours (continued)
Fall 2010 - 2014**

Computer Studies & Advanced Technology	Fall 2010	Fall 2011	Fall 2012	Fall 2013	Fall 2014	10-14 % chg
Architectural & Engineering CAD	51,744	49,152	46,944	47,712	45,024	-12.99%
Computer Information Technology	110,912	113,440	112,512	112,240	134,688	21.44%
Computer Science	114,624	111,424	107,264	102,944	113,760	-0.75%
Electronics & Advanced Technologies	34,240	34,912	31,792	27,328	25,360	-25.93%
Land Surveying Technology/Geomatics	1,808	2,656	1,776	1,968	2,544	40.71%
Visual Communication	141,840	138,816	136,816	135,632	124,512	-12.22%
TOTAL	455,168	450,400	437,104	427,824	445,888	-2.04%

Health Sciences	Fall 2010	Fall 2011	Fall 2012	Fall 2013	Fall 2014	10-14 % chg
Allied Health Science	49,312	47,440	43,824	40,336	37,712	-23.52%
Dental Hygiene	12,256	13,536	12,096	12,784	10,544	-13.97%
Diagnostic Medical Imaging Radiology	26,048	31,968	32,208	32,848	33,936	30.28%
Emergency Medical Services Professions	30,691	35,708	34,344	34,387	38,427	25.21%
Health & Kinesiology	128,448	129,408	104,832	88,032	81,360	-36.66%
Health Information Technology	7,392	10,784	8,960	10,624	12,208	65.15%
Medical Lab Technology	16,640	21,760	20,096	18,208	19,648	18.08%
Nursing - Professional	175,712	174,368	150,640	151,680	165,328	-5.91%
Nursing - Vocational	32,208	44,320	35,904	30,608	29,392	-8.74%
Occupational Therapy Assistant	9,632	11,200	10,096	9,904	8,832	-8.31%
Personal Fitness Trainer	2,880	3,216	2,784	3,072	2,832	-1.67%
Pharmacy Technologist	10,224	9,344	10,208	11,152	10,000	-2.19%
Physical Therapist Assistant	13,520	13,392	14,528	16,992	16,544	22.37%
Sonography	19,552	20,768	19,168	17,664	18,816	-3.76%
Surgical Technology	13,232	13,232	13,232	14,816	13,616	2.90%
Veterinary Technology	.	.	.	32	2,912	.
TOTAL	547,747	580,444	512,920	493,139	502,107	-8.33%

Source: Fall 12th Class Day Data

**Contact Hours (continued)
Fall 2010 - 2014**

Math & Sciences	Fall 2010	Fall 2011	Fall 2012	Fall 2013	Fall 2014	10-14 % chg
Astronomy	21,072	23,424	20,400	21,744	20,880	-0.91%
Biology	450,512	448,816	436,672	425,312	423,168	-6.07%
Biotechnology	7,488	5,360	6,960	3,888	9,712	29.70%
Chemistry	189,744	195,792	180,192	171,216	173,520	-8.55%
Engineering	6,368	5,952	6,304	6,640	6,016	-5.53%
Environmental Science & Technology	13,488	13,200	9,792	10,080	10,816	-19.81%
Geology	50,208	45,984	36,432	39,072	40,608	-19.12%
Mathematics	395,808	386,208	389,920	373,840	394,096	-0.43%
Mathematics - Developmental	565,120	546,784	509,776	414,896	332,128	-41.23%
Military Science	1,296	1,104	960	720	576	-55.56%
Physics	101,472	98,208	99,552	91,584	91,104	-10.22%
TOTAL	1,802,576	1,770,832	1,696,960	1,558,992	1,502,624	-16.64%
Social & Behavioral Sciences	Fall 2010	Fall 2011	Fall 2012	Fall 2013	Fall 2014	10-14 % chg
Anthropology	50,784	46,704	38,640	36,336	36,000	-29.11%
Economics	123,840	115,488	116,160	116,400	117,984	-4.73%
Education Instruction	15,408	8,928	8,640	7,968	8,064	-47.66%
Geography	44,208	36,144	34,224	30,864	27,888	-36.92%
Geographic Information Systems	4,240	4,144	5,488	6,320	6,784	60.00%
Government	368,784	354,288	345,536	366,432	358,400	-2.82%
History	412,128	399,984	384,384	351,936	370,800	-10.03%
Student Development	50,352	58,392	42,576	36,408	40,048	-20.46%
Psychology	255,936	259,728	240,624	222,672	209,664	-18.08%
Sociology	113,424	111,840	93,696	90,528	82,560	-27.21%
TOTAL	1,439,104	1,395,640	1,309,968	1,265,864	1,258,192	-12.57%
GRAND TOTAL (Contact Hours)	6,712,507	6,696,420	6,332,544	6,048,475	5,963,635	-11.16%

Source: Fall 12th Class Day Data

**Distance Learning Course Enrollment and Contact Hours
Fall 2010 - 2014**

	Fall 2010	Fall 2011	Fall 2012	Fall 2013	Fall 2014	10-14 % chg
COURSE ENROLLMENT						
Directed Study (DIR)	237	208	163	.	.	.
Hybrid (HYD)	931	1,066	1,366	1,457	1,297	39.31%
Instructional Television (ITV)	719	445	222	51	75	-89.57%
Online (ONL)	12,096	12,897	12,783	12,933	13,319	10.11%
Print-Based (PRN)	386	378	278	194	203	-47.41%
TOTAL	14,369	14,994	14,812	14,635	14,894	3.65%

	Fall 2010	Fall 2011	Fall 2012	Fall 2013	Fall 2014	10-14 % chg
CONTACT HOURS						
Directed Study (DIR)	21,312	20,912	18,496	.	.	.
Hybrid (HYD)	48,368	55,280	71,104	79,360	70,048	44.82%
Instructional Television (ITV)	35,152	20,640	10,656	2,448	3,600	-89.76%
Online (ONL)	618,200	660,584	648,728	654,448	676,496	9.43%
Print-Based (PRN)	18,528	18,144	13,344	9,312	9,744	-47.41%
TOTAL	741,560	775,560	762,328	745,568	759,888	2.47%

NOTE: Refer to the Glossary for definitions of terms.

Source: Fall 12th Class Day Data

**Student Headcount, Course Enrollment, Contact Hours, and Semester
Credit Hours by Location
Spring 2015**

Location	Student Headcount	Course Enrollment	Contact Hours	Semester Credit Hours
Cypress Creek Campus	4,193	7,955	437,344	23,480
Eastview Campus	2,984	5,598	428,473	16,084
Elgin Campus	350	631	32,896	1,867
Hays Campus	1,746	3,681	191,776	11,028
Highland Campus	4,282	6,486	373,360	20,917
Northridge Campus	7,733	14,177	866,024	43,295
Pinnacle Campus	1,913	3,505	188,272	10,642
Rio Grande Campus	6,604	12,364	729,200	38,454
Riverside Campus	5,209	9,290	563,248	28,689
Round Rock Campus	4,402	8,696	544,464	26,254
South Austin Campus	2,829	4,353	241,200	13,089
Distance Learning Centers	9,177 743	14,123 1,202	725,616 62,288	42,529 3,652
Site-Based Instruction	3,521	5,699	328,336	16,946

NOTE: Refer to the Glossary for definitions of terms. Students who attend multiple locations are counted once at each location. Students who enroll in multiple courses are counted once for each course.

Source: Spring 12th Class Day Data

Course Enrollment
Spring 2011 - 2015

Applied Technologies, Multimedia, & Public Services	Spring 2011	Spring 2012	Spring 2013	Spring 2014	Spring 2015	11-15 % chg
American Sign Language Interpreter Training	546	579	519	534	526	-3.66%
Auto Body Collision Repair & Refinishing	117	129	113	127	106	-9.40%
Automotive Technology & Outdoor Powered Equipment	716	650	606	624	636	-11.17%
Building Construction Technology	484	461	390	417	425	-12.19%
Child Care & Development	432	422	419	379	338	-21.76%
Criminal Justice	1,166	1,201	1,092	949	945	-18.95%
Fire Protection Technology	335	345	326	239	293	-12.54%
Heating, AC, & Refrigeration Technology	323	313	271	286	242	-25.08%
Human Services	495	484	432	463	479	-3.23%
Jewelry	135	153	143	147	135	0.00%
Music	927	883	914	858	823	-11.22%
Music Business, Performance & Technology	579	533	524	506	512	-11.57%
Paralegal	368	388	390	341	314	-14.67%
Photographic Technology	621	566	461	461	392	-36.88%
Radio-TV-Film	487	518	492	546	474	-2.67%
Welding Technology	419	423	433	444	534	27.45%
TOTAL	8,150	8,048	7,525	7,321	7,174	-11.98%

Arts & Humanities	Spring 2011	Spring 2012	Spring 2013	Spring 2014	Spring 2015	11-15 % chg
Arabic	37	30	31	30	16	-56.76%
Art	2,458	2,369	2,309	2,077	2,168	-11.80%
Chinese	20	26	30	38	26	30.00%
Creative Writing	249	247	218	198	170	-31.73%
Dance	206	228	179	219	162	-21.36%
Drama	623	568	481	599	609	-2.25%
English for Speakers of Other Languages	1,078	1,143	836	775	649	-39.80%
French	359	355	301	269	255	-28.97%
German	137	123	122	94	112	-18.25%
Humanities	675	669	609	599	546	-19.11%
Japanese	184	198	192	183	173	-5.98%
Latin	33	58	54	43	49	48.48%
Philosophy	2,687	2,495	2,329	2,144	2,345	-12.73%
Religion	111	140	56	94	30	-72.97%
Russian	19	23	45	36	36	89.47%
Spanish	2,774	2,437	2,192	1,901	1,902	-31.43%
TOTAL	11,650	11,109	9,984	9,299	9,248	-20.62%

Source: Spring 12th Class Day Data

Course Enrollment (continued)
Spring 2011 - 2015

Business Studies	Spring 2011	Spring 2012	Spring 2013	Spring 2014	Spring 2015	11-15 % chg
Accounting	1,938	1,823	1,850	1,876	1,793	-7.48%
Business & Technical Communications	332	395	447	446	437	31.63%
Culinary Arts	349	392	332	333	365	4.58%
Financial Management	187	133	119	107	116	-37.97%
Hospitality Management	280	260	273	248	235	-16.07%
International Business	118	66	54	43	39	-66.95%
Management	1,536	1,521	1,319	1,176	1,243	-19.08%
Marketing	597	487	406	401	374	-37.35%
Meeting & Events Planning	37	47	24	28	39	5.41%
Office Administration	561	494	426	381	337	-39.93%
Real Estate	312	258	280	352	323	3.53%
Travel & Tourism	26	32	20	30	29	11.54%
TOTAL	6,273	5,908	5,550	5,421	5,330	-15.03%

Communications	Spring 2011	Spring 2012	Spring 2013	Spring 2014	Spring 2015	11-15 % chg
English	10,876	10,391	10,260	10,381	10,487	-3.58%
Journalism	296	277	268	259	258	-12.84%
Reading - Developmental	1,324	1,303	783	732	727	-45.09%
Speech	3,508	3,462	3,625	3,520	3,730	6.33%
Study Skills	81	109	68	41	39	-51.85%
Writing - Developmental	1,178	1,187	1,009	746	731	-37.95%
TOTAL	17,263	16,729	16,013	15,679	15,972	-7.48%

Source: Spring 12th Class Day Data

Course Enrollment (continued)
Spring 2011 - 2015

Computer Studies & Advanced Technology	Spring 2011	Spring 2012	Spring 2013	Spring 2014	Spring 2015	11-15 % chg
Architectural & Engineering CAD	538	560	504	488	498	-7.43%
Computer Information Technology	1,720	1,678	1,739	1,696	1,930	12.21%
Computer Science	1,826	1,862	1,627	1,646	1,621	-11.23%
Electronics & Advanced Technologies	429	370	337	317	289	-32.63%
Land Surveying Technology/Geomatics	47	42	22	29	30	-36.17%
Visual Communication	1,559	1,510	1,501	1,450	1,280	-17.90%
TOTAL	6,119	6,022	5,730	5,626	5,648	-7.70%

Health Sciences	Spring 2011	Spring 2012	Spring 2013	Spring 2014	Spring 2015	11-15 % chg
Allied Health Science	1,300	1,273	1,130	997	920	-29.23%
Dental Hygiene	96	99	91	98	86	-10.42%
Diagnostic Medical Imaging Radiology	227	249	252	255	261	14.98%
Emergency Medical Services Professions	359	412	394	392	392	9.19%
Health & Kinesiology	2,961	2,731	2,248	1,855	1,705	-42.42%
Health Information Technology	165	159	148	155	158	-4.24%
Medical Lab Technology	132	133	140	138	142	7.58%
Nursing - Professional	2,241	1,979	1,830	1,940	1,897	-15.35%
Nursing - Vocational	503	453	430	407	343	-31.81%
Occupational Therapy Assistant	146	154	151	135	143	-2.05%
Personal Fitness Trainer	41	49	55	65	49	19.51%
Pharmacy Technician	191	190	198	203	180	-5.76%
Physical Therapist Assistant	114	132	133	144	152	33.33%
Sonography	90	103	82	77	88	-2.22%
Surgical Technology	98	102	112	94	102	4.08%
Veterinary Technology	.	.	.	11	40	.
TOTAL	8,664	8,218	7,394	6,966	6,658	-23.15%

Source: Spring 12th Class Day Data

Course Enrollment (continued)
Spring 2011 - 2015

Math & Sciences	Spring 2011	Spring 2012	Spring 2013	Spring 2014	Spring 2015	11-15 % chg
Astronomy	458	406	389	373	361	-21.18%
Biology	6,767	6,366	6,025	6,205	6,231	-7.92%
Biotechnology	75	77	72	87	63	-16.00%
Chemistry	4,297	4,218	3,551	3,351	3,451	-19.69%
Engineering	130	157	177	161	187	43.85%
Environmental Science & Technology	318	247	222	233	237	-25.47%
Geology	711	624	460	521	537	-24.47%
Mathematics	7,305	7,060	6,505	6,972	7,316	0.15%
Mathematics - Developmental	8,737	8,577	7,069	5,530	4,785	-45.23%
Military Science	27	17	12	8	6	-77.78%
Physics	1,209	1,045	1,058	1,019	1,041	-13.90%
TOTAL	30,034	28,794	25,540	24,460	24,215	-19.37%
Social & Behavioral Sciences	Spring 2011	Spring 2012	Spring 2013	Spring 2014	Spring 2015	11-15 % chg
Anthropology	1,051	768	840	634	759	-27.78%
Economics	2,563	2,197	2,108	2,149	2,181	-14.90%
Education Instruction	242	209	187	190	164	-32.23%
Geography	842	671	587	486	526	-37.53%
Geographic Information Systems	47	60	72	99	91	93.62%
Government	6,987	6,582	6,707	6,575	6,684	-4.34%
History	8,166	7,717	6,898	6,468	6,625	-18.87%
Student Development	1,268	1,466	829	914	902	-28.86%
Psychology	5,053	5,080	4,501	3,977	3,957	-21.69%
Sociology	2,538	2,110	1,914	1,504	1,626	-35.93%
TOTAL	28,757	26,860	24,643	22,996	23,515	-18.23%
GRAND TOTAL (Course Enrollment)	116,910	111,688	102,379	97,768	97,760	-16.38%

Source: Spring 12th Class Day Data

**Semester Credit Hours
Spring 2011 - 2015**

Applied Technologies, Multimedia, & Public Services	Spring 2011	Spring 2012	Spring 2013	Spring 2014	Spring 2015	11-15 % chg
American Sign Language Interpreter Training	2,007	2,112	1,896	1,926	1,899	-5.38%
Auto Body Collision Repair & Refinishing	411	439	382	430	368	-10.46%
Automotive Technology & Outdoor Powered Equipment	2,864	2,600	2,416	2,485	2,531	-11.63%
Building Construction Technology	1,723	1,656	1,434	1,533	1,564	-9.23%
Child Care & Development	1,371	1,306	1,243	1,142	998	-27.21%
Criminal Justice	3,575	3,668	3,362	2,909	2,900	-18.88%
Fire Protection Technology	1,160	1,200	1,118	842	1,034	-10.86%
Heating, AC, & Refrigeration Technology	1,248	1,202	1,060	1,118	936	-25.00%
Human Services	1,518	1,486	1,338	1,434	1,475	-2.83%
Jewelry	540	612	572	588	540	0.00%
Music	1,934	2,047	2,134	2,076	2,003	3.57%
Music Business, Performance & Technology	1,717	1,597	1,583	1,535	1,557	-9.32%
Paralegal	1,104	1,164	1,170	1,023	942	-14.67%
Photographic Technology	1,920	1,737	1,390	1,389	1,183	-38.39%
Radio-TV-Film	1,461	1,554	1,476	1,638	1,422	-2.67%
Welding Technology	1,676	1,692	1,732	1,776	2,136	27.45%
TOTAL	26,229	26,072	24,306	23,844	23,488	-10.45%
Arts & Humanities	Spring 2011	Spring 2012	Spring 2013	Spring 2014	Spring 2015	11-15 % chg
Arabic	155	134	141	130	80	-48.39%
Art	7,374	7,107	6,927	6,231	6,504	-11.80%
Chinese	100	110	136	164	114	14.00%
Creative Writing	747	741	654	594	510	-31.73%
Dance	361	432	363	456	338	-6.37%
Drama	1,853	1,686	1,427	1,769	1,748	-5.67%
English for Speakers of Other Languages	3,234	3,429	2,508	2,325	1,947	-39.80%
French	1,703	1,657	1,407	1,275	1,199	-29.59%
German	655	599	592	452	560	-14.50%
Humanities	2,025	2,007	1,827	1,797	1,638	-19.11%
Japanese	858	904	876	847	829	-3.38%
Latin	147	278	246	215	233	58.50%
Philosophy	8,061	7,485	6,987	6,432	7,035	-12.73%
Religion	333	420	168	282	90	-72.97%
Russian	83	103	215	180	170	104.82%
Spanish	13,036	11,483	10,418	8,953	8,996	-30.99%
TOTAL	40,725	38,575	34,892	32,102	31,991	-21.45%

Source: Spring 12th Class Day Data

**Semester Credit Hours (continued)
Spring 2011 - 2015**

Business Studies	Spring 2011	Spring 2012	Spring 2013	Spring 2014	Spring 2015	11-15 % chg
Accounting	5,901	5,546	5,627	5,702	5,447	-7.69%
Business & Technical Communications	1,013	1,213	1,369	1,393	1,388	37.02%
Culinary Arts	941	1,072	914	918	1,028	9.25%
Financial Management	561	399	355	305	348	-37.97%
Hospitality Management	840	780	819	744	705	-16.07%
International Business	354	198	162	129	117	-66.95%
Management	4,588	4,563	3,957	3,528	3,729	-18.72%
Marketing	1,791	1,461	1,218	1,203	1,122	-37.35%
Meeting & Events Planning	111	141	72	84	117	5.41%
Office Administration	1,465	1,273	1,104	979	865	-40.96%
Real Estate	1,025	834	730	916	828	-19.22%
Travel & Tourism	78	96	60	90	87	11.54%
TOTAL	18,668	17,576	16,387	15,991	15,781	-15.46%

Communications	Spring 2011	Spring 2012	Spring 2013	Spring 2014	Spring 2015	11-15 % chg
English	32,628	31,173	30,780	31,143	31,461	-3.58%
Journalism	888	831	804	777	774	-12.84%
Reading - Developmental	3,972	3,909	2,349	2,196	2,181	-45.09%
Speech	10,524	10,386	10,875	10,560	11,190	6.33%
Study Skills	220	307	193	123	117	-46.82%
Writing - Developmental	3,300	3,273	2,741	2,100	2,011	-39.06%
TOTAL	51,532	49,879	47,742	46,899	47,734	-7.37%

Source: Spring 12th Class Day Data

**Semester Credit Hours (continued)
Spring 2011 - 2015**

Computer Studies & Advanced Technology	Spring 2011	Spring 2012	Spring 2013	Spring 2014	Spring 2015	11-15 % chg
Architectural & Engineering CAD	2,152	2,240	2,016	1,952	1,992	-7.43%
Computer Information Technology	5,441	5,309	5,475	5,350	6,117	12.42%
Computer Science	5,563	5,671	4,967	5,023	4,971	-10.64%
Electronics & Advanced Technologies	1,552	1,388	1,225	1,175	1,067	-31.25%
Land Surveying Technology/Geomatics	141	127	66	87	90	-36.17%
Visual Communication	5,780	5,635	5,598	5,418	4,724	-18.27%
TOTAL	20,629	20,370	19,347	19,005	18,961	-8.09%

Health Sciences	Spring 2011	Spring 2012	Spring 2013	Spring 2014	Spring 2015	11-15 % chg
Allied Health Science	3,211	3,119	2,715	2,398	2,205	-31.33%
Dental Hygiene	210	214	198	210	187	-10.95%
Diagnostic Medical Imaging Radiology	639	705	716	713	744	16.43%
Emergency Medical Services Professions	967	1,050	1,023	1,026	999	3.31%
Health & Kinesiology	3,810	3,569	2,993	2,392	2,305	-39.50%
Health Information Technology	463	453	413	424	438	-5.40%
Medical Lab Technology	400	366	391	366	432	8.00%
Nursing - Professional	5,202	4,893	4,480	4,779	4,746	-8.77%
Nursing - Vocational	1,552	1,363	1,345	1,223	1,055	-32.02%
Occupational Therapy Assistant	352	365	362	320	346	-1.70%
Personal Fitness Trainer	146	168	188	222	167	14.38%
Pharmacy Technician	536	541	564	592	511	-4.66%
Physical Therapist Assistant	382	440	440	479	515	34.82%
Sonography	290	320	257	239	278	-4.14%
Surgical Technology	370	390	416	365	398	7.57%
Veterinary Technology	.	.	.	11	120	.
TOTAL	18,530	17,956	16,501	15,759	15,446	-16.64%

Source: Spring 12th Class Day Data

**Semester Credit Hours (continued)
Spring 2011 - 2015**

Math & Sciences	Spring 2011	Spring 2012	Spring 2013	Spring 2014	Spring 2015	11-15 % chg
Astronomy	1,461	1,296	1,233	1,183	1,126	-22.93%
Biology	20,449	19,379	18,460	18,954	19,203	-6.09%
Biotechnology	243	237	236	269	222	-8.64%
Chemistry	8,613	8,458	7,109	6,711	6,967	-19.11%
Engineering	317	367	416	387	441	39.12%
Environmental Science & Technology	930	719	668	683	700	-24.73%
Geology	2,496	2,212	1,624	1,862	1,898	-23.96%
Mathematics	23,802	22,972	21,209	22,696	23,918	0.49%
Mathematics - Developmental	25,373	24,872	20,654	16,133	15,364	-39.45%
Military Science	54	34	24	16	12	-77.78%
Physics	4,796	4,180	4,232	4,076	4,164	-13.18%
TOTAL	88,534	84,726	75,865	72,970	74,015	-16.40%
Social & Behavioral Sciences	Spring 2011	Spring 2012	Spring 2013	Spring 2014	Spring 2015	11-15 % chg
Anthropology	3,153	2,304	2,520	1,902	2,277	-27.78%
Economics	7,689	6,591	6,324	6,447	6,543	-14.90%
Education Instruction	726	627	561	570	492	-32.23%
Geography	2,604	2,100	1,853	1,516	1,641	-36.98%
Geographic Information Systems	179	209	259	376	341	90.50%
Government	20,961	19,746	20,121	19,725	20,052	-4.34%
History	24,498	23,151	20,694	19,404	19,875	-18.87%
Student Development	2,190	2,382	1,497	1,532	1,540	-29.68%
Psychology	15,159	15,240	13,503	11,931	11,871	-21.69%
Sociology	7,614	6,330	5,742	4,512	4,878	-35.93%
TOTAL	84,773	78,680	73,074	67,915	69,510	-18.00%
GRAND TOTAL (Semester Credit Hours)	349,620	333,834	308,114	294,485	296,926	-15.07%

Source: Spring 12th Class Day Data

**Contact Hours
Spring 2011 - 2015**

Applied Technologies, Multimedia, & Public Services	Spring 2011	Spring 2012	Spring 2013	Spring 2014	Spring 2015	11-15 % chg
American Sign Language Interpreter Training	49,120	52,400	47,360	42,512	42,672	-13.13%
Auto Body Collision Repair & Refinishing	10,464	12,944	10,160	11,504	8,928	-14.68%
Automotive Technology & Outdoor Powered Equipment	71,872	66,016	61,280	64,640	64,928	-9.66%
Building Construction Technology	38,160	37,280	31,392	33,536	34,272	-10.19%
Child Care & Development	33,872	32,144	31,168	28,336	24,800	-26.78%
Criminal Justice	59,504	62,080	55,904	50,256	48,384	-18.69%
Fire Protection Technology	24,544	25,536	23,264	18,272	22,496	-8.34%
Heating, AC, & Refrigeration Technology	31,712	30,848	26,400	27,872	23,744	-25.13%
Human Services	27,216	27,376	25,248	27,632	27,584	1.35%
Jewelry	12,960	14,688	13,728	14,112	12,960	0.00%
Music	42,744	39,536	41,280	39,352	37,576	-12.09%
Music Business, Performance & Technology	38,352	35,760	35,456	33,936	34,032	-11.26%
Paralegal	20,544	21,984	22,080	20,928	19,392	-5.61%
Photographic Technology	76,848	70,000	57,504	57,568	48,944	-36.31%
Radio-TV-Film	30,448	33,312	30,592	34,720	30,752	1.00%
Welding Technology	40,352	40,736	41,696	42,752	51,392	27.36%
TOTAL	608,712	602,640	554,512	547,928	532,856	-12.46%

Arts & Humanities	Spring 2011	Spring 2012	Spring 2013	Spring 2014	Spring 2015	11-15 % chg
Arabic	2,480	2,144	2,256	2,080	1,280	-48.39%
Art	158,736	152,016	144,528	129,888	133,584	-15.85%
Chinese	1,600	1,760	2,176	2,624	1,824	14.00%
Creative Writing	11,952	11,856	10,464	9,504	8,160	-31.73%
Dance	13,184	13,952	10,640	13,360	9,952	-24.51%
Drama	35,680	31,648	27,376	33,520	32,400	-9.19%
English for Speakers of Other Languages	69,168	73,312	53,632	49,808	41,600	-39.86%
French	27,248	26,512	22,512	20,400	19,184	-29.59%
German	10,480	9,584	9,472	7,232	8,960	-14.50%
Humanities	32,400	32,112	29,232	28,752	26,208	-19.11%
Japanese	13,728	14,464	14,016	13,552	13,264	-3.38%
Latin	2,352	4,448	3,936	3,440	3,728	58.50%
Philosophy	128,976	119,760	111,792	102,912	112,560	-12.73%
Religion	5,328	6,720	2,688	4,512	1,440	-72.97%
Russian	1,328	1,648	3,440	2,880	2,720	104.82%
Spanish	208,928	183,728	166,688	143,248	143,936	-31.11%
TOTAL	723,568	685,664	614,848	567,712	560,800	-22.50%

Source: Spring 12th Class Day Data

**Contact Hours (continued)
Spring 2011 - 2015**

Business Studies	Spring 2011	Spring 2012	Spring 2013	Spring 2014	Spring 2015	11-15 % chg
Accounting	122,416	114,256	116,432	118,192	113,200	-7.53%
Business & Technical Communications	16,496	19,408	21,904	22,288	22,496	36.37%
Culinary Arts	22,672	26,656	25,744	25,552	30,576	34.86%
Financial Management	8,976	6,384	5,680	4,880	5,568	-37.97%
Hospitality Management	16,272	17,344	14,560	15,216	12,816	-21.24%
International Business	5,664	3,168	2,592	2,064	1,872	-66.95%
Management	73,408	73,248	63,312	56,688	59,904	-18.40%
Marketing	28,656	23,376	20,384	20,416	18,672	-34.84%
Meeting & Events Planning	1,776	2,256	1,152	1,344	1,872	5.41%
Office Administration	33,744	29,872	25,760	23,328	20,272	-39.92%
Real Estate	16,400	13,344	11,680	14,656	13,248	-19.22%
Travel & Tourism	1,568	1,888	960	1,552	1,568	0.00%
TOTAL	348,048	331,200	310,160	306,176	302,064	-13.21%

Communications	Spring 2011	Spring 2012	Spring 2013	Spring 2014	Spring 2015	11-15 % chg
English	522,048	498,768	492,480	498,288	503,376	-3.58%
Journalism	14,544	13,872	13,392	12,848	12,752	-12.32%
Reading - Developmental	73,264	71,984	42,512	40,544	41,056	-43.96%
Speech	168,384	166,176	174,000	168,960	179,040	6.33%
Study Skills	3,520	4,912	3,088	1,968	1,872	-46.82%
Writing - Developmental	61,920	60,752	51,488	39,568	38,160	-38.37%
TOTAL	843,680	816,464	776,960	762,176	776,256	-7.99%

Source: Spring 12th Class Day Data

**Contact Hours (continued)
Spring 2011 - 2015**

Computer Studies & Advanced Technology	Spring 2011	Spring 2012	Spring 2013	Spring 2014	Spring 2015	11-15 % chg
Architectural & Engineering CAD	51,648	53,760	48,384	46,848	47,808	-7.43%
Computer Information Technology	124,224	121,536	124,656	122,304	140,112	12.79%
Computer Science	119,584	121,888	106,880	108,064	107,200	-10.36%
Electronics & Advanced Technologies	37,600	33,520	29,968	28,912	25,504	-32.17%
Land Surveying Technology/Geomatics	2,640	2,800	1,344	1,872	1,872	-29.09%
Visual Communication	143,856	140,512	139,984	135,984	118,816	-17.41%
TOTAL	479,552	474,016	451,216	443,984	441,312	-7.97%

Health Sciences	Spring 2011	Spring 2012	Spring 2013	Spring 2014	Spring 2015	11-15 % chg
Allied Health Science	51,376	49,904	43,440	38,368	35,280	-31.33%
Dental Hygiene	10,240	10,560	9,792	10,160	8,672	-15.31%
Diagnostic Medical Imaging Radiology	29,888	35,040	35,776	35,328	36,224	21.20%
Emergency Medical Services Professions	31,640	37,258	35,830	36,619	36,617	15.73%
Health & Kinesiology	142,128	131,088	107,904	89,040	81,840	-42.42%
Health Information Technology	8,896	8,672	8,816	9,600	9,712	9.17%
Medical Lab Technology	15,632	16,512	17,648	16,288	19,312	23.54%
Nursing - Professional	181,728	170,544	156,336	166,912	166,592	-8.33%
Nursing - Vocational	45,856	42,608	41,184	36,128	32,512	-29.10%
Occupational Therapy Assistant	14,208	15,392	14,800	13,696	13,920	-2.03%
Personal Fitness Trainer	3,200	3,648	4,080	4,832	3,648	14.00%
Pharmacy Technician	14,848	14,832	15,520	15,184	12,480	-15.95%
Physical Therapist Assistant	14,400	16,512	17,120	18,480	19,536	35.67%
Sonography	16,800	18,320	14,848	13,584	16,192	-3.62%
Surgical Technology	13,120	13,920	14,624	12,560	13,744	4.76%
Veterinary Technology	.	.	.	352	3,040	.
TOTAL	593,960	584,810	537,718	517,131	509,321	-14.25%

Source: Spring 12th Class Day Data

**Contact Hours (continued)
Spring 2011 - 2015**

Math & Sciences	Spring 2011	Spring 2012	Spring 2013	Spring 2014	Spring 2015	11-15 % chg
Astronomy	26,160	23,232	21,840	20,976	19,392	-25.87%
Biology	457,440	431,200	409,968	419,888	423,632	-7.39%
Biotechnology	7,008	6,400	9,280	8,640	7,376	5.25%
Chemistry	206,256	202,464	170,448	160,848	165,648	-19.69%
Engineering	5,072	5,872	6,656	7,232	8,128	60.25%
Environmental Science & Technology	15,680	12,672	11,472	11,872	12,368	-21.12%
Geology	51,552	46,272	33,792	39,360	39,552	-23.28%
Mathematics	381,056	368,144	339,424	363,312	382,816	0.46%
Mathematics - Developmental	540,784	528,688	441,152	342,144	303,584	-43.86%
Military Science	1,296	816	576	384	288	-77.78%
Physics	114,144	100,320	101,568	97,824	99,936	-12.45%
TOTAL	1,806,448	1,726,080	1,546,176	1,472,480	1,462,720	-19.03%
Social & Behavioral Sciences	Spring 2011	Spring 2012	Spring 2013	Spring 2014	Spring 2015	11-15 % chg
Anthropology	50,832	37,488	40,512	30,624	36,576	-28.05%
Economics	123,024	105,456	101,184	103,152	104,688	-14.90%
Education Instruction	11,616	10,032	8,976	9,120	7,872	-32.23%
Geography	44,160	36,384	32,592	26,112	28,272	-35.98%
Geographic Information Systems	4,560	5,232	6,752	9,328	8,016	75.79%
Government	336,144	316,832	322,896	316,304	321,792	-4.27%
History	391,968	370,416	331,104	310,464	318,000	-18.87%
Student Development	41,496	46,176	27,912	29,352	33,968	-18.14%
Psychology	242,544	243,840	216,048	190,896	189,936	-21.69%
Sociology	121,824	101,280	91,872	72,192	78,048	-35.93%
TOTAL	1,368,168	1,273,136	1,179,848	1,097,544	1,127,168	-17.61%
GRAND TOTAL (Contact Hours)	6,772,136	6,494,010	5,971,438	5,715,131	5,712,497	-15.65%

Source: Spring 12th Class Day Data

**Distance Learning Course Enrollment and Contact Hours
Spring 2011 - 2015**

	Spring 2011	Spring 2012	Spring 2013	Spring 2014	Spring 2015	11-15 % chg
COURSE ENROLLMENT						
Directed Study (DIR)	236	212	35	.	.	.
Hybrid (HYD)	758	997	1,272	1,216	1,045	37.86%
Instructional Television (ITV)	728	386	206	36	36	-95.05%
Online (ONL)	12,324	13,026	12,718	12,695	12,868	4.41%
Print-Based (PRN)	379	404	273	185	174	-54.09%
TOTAL	14,425	15,025	14,504	14,132	14,123	-2.09%

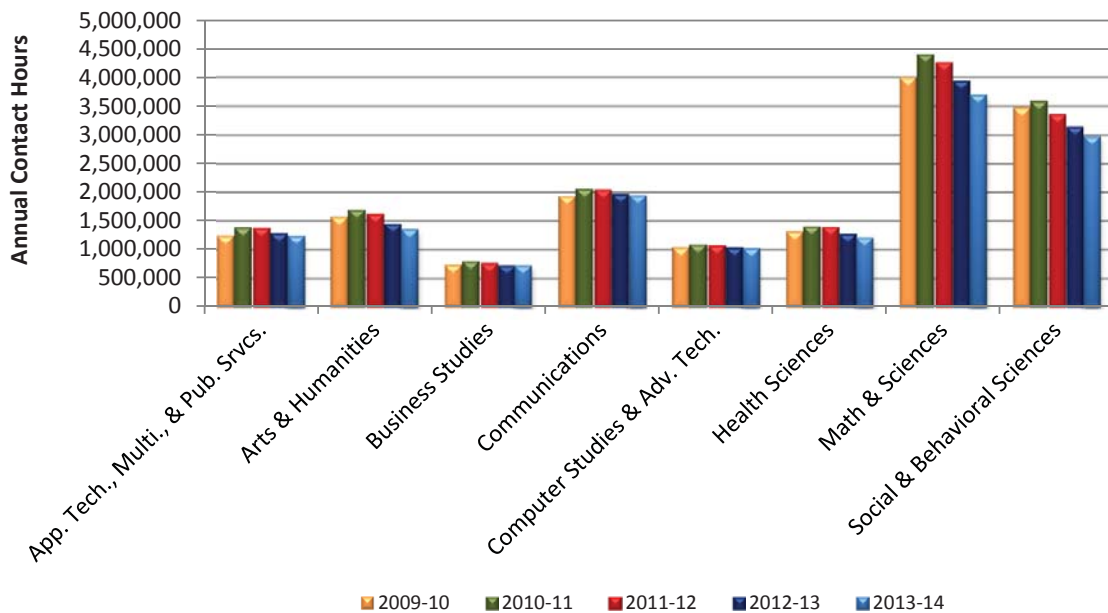
	Spring 2011	Spring 2012	Spring 2013	Spring 2014	Spring 2015	11-15 % chg
CONTACT HOURS						
Directed Study (DIR)	20,432	21,728	1,680	.	.	.
Hybrid (HYD)	41,056	53,872	70,080	72,080	58,112	41.54%
Instructional Television (ITV)	34,448	18,336	9,888	1,728	1,728	-94.98%
Online (ONL)	637,384	673,520	648,144	646,752	657,424	3.14%
Print-Based (PRN)	18,192	19,392	13,104	8,880	8,352	-54.09%
TOTAL	751,512	786,848	742,896	729,440	725,616	-3.45%

NOTE: Refer to the Glossary for definitions of terms.

Source: Spring 12th Class Day Data

Annual Contact Hours by Dean Area
Academic Years 2010 - 2014

Dean Area	2009-10	2010-11	2011-12	2012-13	2013-14	10-14 % chg
Applied Technologies, Multimedia, & Public Services	1,257,288	1,398,760	1,391,616	1,303,304	1,257,944	0.05%
Arts & Humanities	1,588,736	1,706,448	1,632,416	1,469,312	1,369,456	-13.80%
Business Studies	754,000	817,008	778,496	739,488	739,936	-1.87%
Communications	1,950,480	2,074,848	2,057,888	1,983,440	1,962,544	0.62%
Computer Studies & Advanced Technology	1,052,592	1,106,240	1,088,016	1,053,104	1,039,888	-1.21%
Health Sciences	1,330,450	1,420,024	1,411,913	1,292,280	1,225,438	-7.89%
Math & Sciences	4,017,424	4,417,584	4,274,288	3,955,824	3,713,936	-7.55%
Social & Behavioral Sciences	3,488,944	3,600,344	3,369,976	3,154,624	2,990,840	-14.28%
TOTAL	15,439,914	16,541,256	16,004,609	14,951,376	14,299,982	-7.38%



Source: Fall 12th Class Day Data, Spring 12th Class Day Data, and Summer 4th Class Day Data (Second summer session)

THIS PAGE INTENTIONALLY LEFT BLANK