

**Student Headcount, Course Enrollment, Contact Hours, and Semester
Credit Hours by Location
Spring 2015**

Location	Student Headcount	Course Enrollment	Contact Hours	Semester Credit Hours
Cypress Creek Campus	4,193	7,955	437,344	23,480
Eastview Campus	2,984	5,598	428,473	16,084
Elgin Campus	350	631	32,896	1,867
Hays Campus	1,746	3,681	191,776	11,028
Highland Campus	4,282	6,486	373,360	20,917
Northridge Campus	7,733	14,177	866,024	43,295
Pinnacle Campus	1,913	3,505	188,272	10,642
Rio Grande Campus	6,604	12,364	729,200	38,454
Riverside Campus	5,209	9,290	563,248	28,689
Round Rock Campus	4,402	8,696	544,464	26,254
South Austin Campus	2,829	4,353	241,200	13,089
Distance Learning Centers	9,177 743	14,123 1,202	725,616 62,288	42,529 3,652
Site-Based Instruction	3,521	5,699	328,336	16,946

NOTE: Refer to the Glossary for definitions of terms. Students who attend multiple locations are counted once at each location. Students who enroll in multiple courses are counted once for each course.

Source: Spring 12th Class Day Data

Course Enrollment
Spring 2011 - 2015

Applied Technologies, Multimedia, & Public Services	Spring 2011	Spring 2012	Spring 2013	Spring 2014	Spring 2015	11-15 % chg
American Sign Language Interpreter Training	546	579	519	534	526	-3.66%
Auto Body Collision Repair & Refinishing	117	129	113	127	106	-9.40%
Automotive Technology & Outdoor Powered Equipment	716	650	606	624	636	-11.17%
Building Construction Technology	484	461	390	417	425	-12.19%
Child Care & Development	432	422	419	379	338	-21.76%
Criminal Justice	1,166	1,201	1,092	949	945	-18.95%
Fire Protection Technology	335	345	326	239	293	-12.54%
Heating, AC, & Refrigeration Technology	323	313	271	286	242	-25.08%
Human Services	495	484	432	463	479	-3.23%
Jewelry	135	153	143	147	135	0.00%
Music	927	883	914	858	823	-11.22%
Music Business, Performance & Technology	579	533	524	506	512	-11.57%
Paralegal	368	388	390	341	314	-14.67%
Photographic Technology	621	566	461	461	392	-36.88%
Radio-TV-Film	487	518	492	546	474	-2.67%
Welding Technology	419	423	433	444	534	27.45%
TOTAL	8,150	8,048	7,525	7,321	7,174	-11.98%

Arts & Humanities	Spring 2011	Spring 2012	Spring 2013	Spring 2014	Spring 2015	11-15 % chg
Arabic	37	30	31	30	16	-56.76%
Art	2,458	2,369	2,309	2,077	2,168	-11.80%
Chinese	20	26	30	38	26	30.00%
Creative Writing	249	247	218	198	170	-31.73%
Dance	206	228	179	219	162	-21.36%
Drama	623	568	481	599	609	-2.25%
English for Speakers of Other Languages	1,078	1,143	836	775	649	-39.80%
French	359	355	301	269	255	-28.97%
German	137	123	122	94	112	-18.25%
Humanities	675	669	609	599	546	-19.11%
Japanese	184	198	192	183	173	-5.98%
Latin	33	58	54	43	49	48.48%
Philosophy	2,687	2,495	2,329	2,144	2,345	-12.73%
Religion	111	140	56	94	30	-72.97%
Russian	19	23	45	36	36	89.47%
Spanish	2,774	2,437	2,192	1,901	1,902	-31.43%
TOTAL	11,650	11,109	9,984	9,299	9,248	-20.62%

Source: Spring 12th Class Day Data

Course Enrollment (continued)
Spring 2011 - 2015

Business Studies	Spring 2011	Spring 2012	Spring 2013	Spring 2014	Spring 2015	11-15 % chg
Accounting	1,938	1,823	1,850	1,876	1,793	-7.48%
Business & Technical Communications	332	395	447	446	437	31.63%
Culinary Arts	349	392	332	333	365	4.58%
Financial Management	187	133	119	107	116	-37.97%
Hospitality Management	280	260	273	248	235	-16.07%
International Business	118	66	54	43	39	-66.95%
Management	1,536	1,521	1,319	1,176	1,243	-19.08%
Marketing	597	487	406	401	374	-37.35%
Meeting & Events Planning	37	47	24	28	39	5.41%
Office Administration	561	494	426	381	337	-39.93%
Real Estate	312	258	280	352	323	3.53%
Travel & Tourism	26	32	20	30	29	11.54%
TOTAL	6,273	5,908	5,550	5,421	5,330	-15.03%

Communications	Spring 2011	Spring 2012	Spring 2013	Spring 2014	Spring 2015	11-15 % chg
English	10,876	10,391	10,260	10,381	10,487	-3.58%
Journalism	296	277	268	259	258	-12.84%
Reading - Developmental	1,324	1,303	783	732	727	-45.09%
Speech	3,508	3,462	3,625	3,520	3,730	6.33%
Study Skills	81	109	68	41	39	-51.85%
Writing - Developmental	1,178	1,187	1,009	746	731	-37.95%
TOTAL	17,263	16,729	16,013	15,679	15,972	-7.48%

Source: Spring 12th Class Day Data

Course Enrollment (continued)
Spring 2011 - 2015

Computer Studies & Advanced Technology	Spring 2011	Spring 2012	Spring 2013	Spring 2014	Spring 2015	11-15 % chg
Architectural & Engineering CAD	538	560	504	488	498	-7.43%
Computer Information Technology	1,720	1,678	1,739	1,696	1,930	12.21%
Computer Science	1,826	1,862	1,627	1,646	1,621	-11.23%
Electronics & Advanced Technologies	429	370	337	317	289	-32.63%
Land Surveying Technology/Geomatics	47	42	22	29	30	-36.17%
Visual Communication	1,559	1,510	1,501	1,450	1,280	-17.90%
TOTAL	6,119	6,022	5,730	5,626	5,648	-7.70%

Health Sciences	Spring 2011	Spring 2012	Spring 2013	Spring 2014	Spring 2015	11-15 % chg
Allied Health Science	1,300	1,273	1,130	997	920	-29.23%
Dental Hygiene	96	99	91	98	86	-10.42%
Diagnostic Medical Imaging Radiology	227	249	252	255	261	14.98%
Emergency Medical Services Professions	359	412	394	392	392	9.19%
Health & Kinesiology	2,961	2,731	2,248	1,855	1,705	-42.42%
Health Information Technology	165	159	148	155	158	-4.24%
Medical Lab Technology	132	133	140	138	142	7.58%
Nursing - Professional	2,241	1,979	1,830	1,940	1,897	-15.35%
Nursing - Vocational	503	453	430	407	343	-31.81%
Occupational Therapy Assistant	146	154	151	135	143	-2.05%
Personal Fitness Trainer	41	49	55	65	49	19.51%
Pharmacy Technician	191	190	198	203	180	-5.76%
Physical Therapist Assistant	114	132	133	144	152	33.33%
Sonography	90	103	82	77	88	-2.22%
Surgical Technology	98	102	112	94	102	4.08%
Veterinary Technology	.	.	.	11	40	.
TOTAL	8,664	8,218	7,394	6,966	6,658	-23.15%

Source: Spring 12th Class Day Data

Course Enrollment (continued)
Spring 2011 - 2015

Math & Sciences	Spring 2011	Spring 2012	Spring 2013	Spring 2014	Spring 2015	11-15 % chg
Astronomy	458	406	389	373	361	-21.18%
Biology	6,767	6,366	6,025	6,205	6,231	-7.92%
Biotechnology	75	77	72	87	63	-16.00%
Chemistry	4,297	4,218	3,551	3,351	3,451	-19.69%
Engineering	130	157	177	161	187	43.85%
Environmental Science & Technology	318	247	222	233	237	-25.47%
Geology	711	624	460	521	537	-24.47%
Mathematics	7,305	7,060	6,505	6,972	7,316	0.15%
Mathematics - Developmental	8,737	8,577	7,069	5,530	4,785	-45.23%
Military Science	27	17	12	8	6	-77.78%
Physics	1,209	1,045	1,058	1,019	1,041	-13.90%
TOTAL	30,034	28,794	25,540	24,460	24,215	-19.37%
Social & Behavioral Sciences	Spring 2011	Spring 2012	Spring 2013	Spring 2014	Spring 2015	11-15 % chg
Anthropology	1,051	768	840	634	759	-27.78%
Economics	2,563	2,197	2,108	2,149	2,181	-14.90%
Education Instruction	242	209	187	190	164	-32.23%
Geography	842	671	587	486	526	-37.53%
Geographic Information Systems	47	60	72	99	91	93.62%
Government	6,987	6,582	6,707	6,575	6,684	-4.34%
History	8,166	7,717	6,898	6,468	6,625	-18.87%
Student Development	1,268	1,466	829	914	902	-28.86%
Psychology	5,053	5,080	4,501	3,977	3,957	-21.69%
Sociology	2,538	2,110	1,914	1,504	1,626	-35.93%
TOTAL	28,757	26,860	24,643	22,996	23,515	-18.23%
GRAND TOTAL (Course Enrollment)	116,910	111,688	102,379	97,768	97,760	-16.38%

Source: Spring 12th Class Day Data

**Semester Credit Hours
Spring 2011 - 2015**

Applied Technologies, Multimedia, & Public Services	Spring 2011	Spring 2012	Spring 2013	Spring 2014	Spring 2015	11-15 % chg
American Sign Language Interpreter Training	2,007	2,112	1,896	1,926	1,899	-5.38%
Auto Body Collision Repair & Refinishing	411	439	382	430	368	-10.46%
Automotive Technology & Outdoor Powered Equipment	2,864	2,600	2,416	2,485	2,531	-11.63%
Building Construction Technology	1,723	1,656	1,434	1,533	1,564	-9.23%
Child Care & Development	1,371	1,306	1,243	1,142	998	-27.21%
Criminal Justice	3,575	3,668	3,362	2,909	2,900	-18.88%
Fire Protection Technology	1,160	1,200	1,118	842	1,034	-10.86%
Heating, AC, & Refrigeration Technology	1,248	1,202	1,060	1,118	936	-25.00%
Human Services	1,518	1,486	1,338	1,434	1,475	-2.83%
Jewelry	540	612	572	588	540	0.00%
Music	1,934	2,047	2,134	2,076	2,003	3.57%
Music Business, Performance & Technology	1,717	1,597	1,583	1,535	1,557	-9.32%
Paralegal	1,104	1,164	1,170	1,023	942	-14.67%
Photographic Technology	1,920	1,737	1,390	1,389	1,183	-38.39%
Radio-TV-Film	1,461	1,554	1,476	1,638	1,422	-2.67%
Welding Technology	1,676	1,692	1,732	1,776	2,136	27.45%
TOTAL	26,229	26,072	24,306	23,844	23,488	-10.45%
Arts & Humanities	Spring 2011	Spring 2012	Spring 2013	Spring 2014	Spring 2015	11-15 % chg
Arabic	155	134	141	130	80	-48.39%
Art	7,374	7,107	6,927	6,231	6,504	-11.80%
Chinese	100	110	136	164	114	14.00%
Creative Writing	747	741	654	594	510	-31.73%
Dance	361	432	363	456	338	-6.37%
Drama	1,853	1,686	1,427	1,769	1,748	-5.67%
English for Speakers of Other Languages	3,234	3,429	2,508	2,325	1,947	-39.80%
French	1,703	1,657	1,407	1,275	1,199	-29.59%
German	655	599	592	452	560	-14.50%
Humanities	2,025	2,007	1,827	1,797	1,638	-19.11%
Japanese	858	904	876	847	829	-3.38%
Latin	147	278	246	215	233	58.50%
Philosophy	8,061	7,485	6,987	6,432	7,035	-12.73%
Religion	333	420	168	282	90	-72.97%
Russian	83	103	215	180	170	104.82%
Spanish	13,036	11,483	10,418	8,953	8,996	-30.99%
TOTAL	40,725	38,575	34,892	32,102	31,991	-21.45%

Source: Spring 12th Class Day Data

**Semester Credit Hours (continued)
Spring 2011 - 2015**

Business Studies	Spring 2011	Spring 2012	Spring 2013	Spring 2014	Spring 2015	11-15 % chg
Accounting	5,901	5,546	5,627	5,702	5,447	-7.69%
Business & Technical Communications	1,013	1,213	1,369	1,393	1,388	37.02%
Culinary Arts	941	1,072	914	918	1,028	9.25%
Financial Management	561	399	355	305	348	-37.97%
Hospitality Management	840	780	819	744	705	-16.07%
International Business	354	198	162	129	117	-66.95%
Management	4,588	4,563	3,957	3,528	3,729	-18.72%
Marketing	1,791	1,461	1,218	1,203	1,122	-37.35%
Meeting & Events Planning	111	141	72	84	117	5.41%
Office Administration	1,465	1,273	1,104	979	865	-40.96%
Real Estate	1,025	834	730	916	828	-19.22%
Travel & Tourism	78	96	60	90	87	11.54%
TOTAL	18,668	17,576	16,387	15,991	15,781	-15.46%

Communications	Spring 2011	Spring 2012	Spring 2013	Spring 2014	Spring 2015	11-15 % chg
English	32,628	31,173	30,780	31,143	31,461	-3.58%
Journalism	888	831	804	777	774	-12.84%
Reading - Developmental	3,972	3,909	2,349	2,196	2,181	-45.09%
Speech	10,524	10,386	10,875	10,560	11,190	6.33%
Study Skills	220	307	193	123	117	-46.82%
Writing - Developmental	3,300	3,273	2,741	2,100	2,011	-39.06%
TOTAL	51,532	49,879	47,742	46,899	47,734	-7.37%

Source: Spring 12th Class Day Data

**Semester Credit Hours (continued)
Spring 2011 - 2015**

Computer Studies & Advanced Technology	Spring 2011	Spring 2012	Spring 2013	Spring 2014	Spring 2015	11-15 % chg
Architectural & Engineering CAD	2,152	2,240	2,016	1,952	1,992	-7.43%
Computer Information Technology	5,441	5,309	5,475	5,350	6,117	12.42%
Computer Science	5,563	5,671	4,967	5,023	4,971	-10.64%
Electronics & Advanced Technologies	1,552	1,388	1,225	1,175	1,067	-31.25%
Land Surveying Technology/Geomatics	141	127	66	87	90	-36.17%
Visual Communication	5,780	5,635	5,598	5,418	4,724	-18.27%
TOTAL	20,629	20,370	19,347	19,005	18,961	-8.09%

Health Sciences	Spring 2011	Spring 2012	Spring 2013	Spring 2014	Spring 2015	11-15 % chg
Allied Health Science	3,211	3,119	2,715	2,398	2,205	-31.33%
Dental Hygiene	210	214	198	210	187	-10.95%
Diagnostic Medical Imaging Radiology	639	705	716	713	744	16.43%
Emergency Medical Services Professions	967	1,050	1,023	1,026	999	3.31%
Health & Kinesiology	3,810	3,569	2,993	2,392	2,305	-39.50%
Health Information Technology	463	453	413	424	438	-5.40%
Medical Lab Technology	400	366	391	366	432	8.00%
Nursing - Professional	5,202	4,893	4,480	4,779	4,746	-8.77%
Nursing - Vocational	1,552	1,363	1,345	1,223	1,055	-32.02%
Occupational Therapy Assistant	352	365	362	320	346	-1.70%
Personal Fitness Trainer	146	168	188	222	167	14.38%
Pharmacy Technician	536	541	564	592	511	-4.66%
Physical Therapist Assistant	382	440	440	479	515	34.82%
Sonography	290	320	257	239	278	-4.14%
Surgical Technology	370	390	416	365	398	7.57%
Veterinary Technology	.	.	.	11	120	.
TOTAL	18,530	17,956	16,501	15,759	15,446	-16.64%

Source: Spring 12th Class Day Data

**Semester Credit Hours (continued)
Spring 2011 - 2015**

Math & Sciences	Spring 2011	Spring 2012	Spring 2013	Spring 2014	Spring 2015	11-15 % chg
Astronomy	1,461	1,296	1,233	1,183	1,126	-22.93%
Biology	20,449	19,379	18,460	18,954	19,203	-6.09%
Biotechnology	243	237	236	269	222	-8.64%
Chemistry	8,613	8,458	7,109	6,711	6,967	-19.11%
Engineering	317	367	416	387	441	39.12%
Environmental Science & Technology	930	719	668	683	700	-24.73%
Geology	2,496	2,212	1,624	1,862	1,898	-23.96%
Mathematics	23,802	22,972	21,209	22,696	23,918	0.49%
Mathematics - Developmental	25,373	24,872	20,654	16,133	15,364	-39.45%
Military Science	54	34	24	16	12	-77.78%
Physics	4,796	4,180	4,232	4,076	4,164	-13.18%
TOTAL	88,534	84,726	75,865	72,970	74,015	-16.40%
Social & Behavioral Sciences	Spring 2011	Spring 2012	Spring 2013	Spring 2014	Spring 2015	11-15 % chg
Anthropology	3,153	2,304	2,520	1,902	2,277	-27.78%
Economics	7,689	6,591	6,324	6,447	6,543	-14.90%
Education Instruction	726	627	561	570	492	-32.23%
Geography	2,604	2,100	1,853	1,516	1,641	-36.98%
Geographic Information Systems	179	209	259	376	341	90.50%
Government	20,961	19,746	20,121	19,725	20,052	-4.34%
History	24,498	23,151	20,694	19,404	19,875	-18.87%
Student Development	2,190	2,382	1,497	1,532	1,540	-29.68%
Psychology	15,159	15,240	13,503	11,931	11,871	-21.69%
Sociology	7,614	6,330	5,742	4,512	4,878	-35.93%
TOTAL	84,773	78,680	73,074	67,915	69,510	-18.00%
GRAND TOTAL (Semester Credit Hours)	349,620	333,834	308,114	294,485	296,926	-15.07%

Source: Spring 12th Class Day Data

**Contact Hours
Spring 2011 - 2015**

Applied Technologies, Multimedia, & Public Services	Spring 2011	Spring 2012	Spring 2013	Spring 2014	Spring 2015	11-15 % chg
American Sign Language Interpreter Training	49,120	52,400	47,360	42,512	42,672	-13.13%
Auto Body Collision Repair & Refinishing	10,464	12,944	10,160	11,504	8,928	-14.68%
Automotive Technology & Outdoor Powered Equipment	71,872	66,016	61,280	64,640	64,928	-9.66%
Building Construction Technology	38,160	37,280	31,392	33,536	34,272	-10.19%
Child Care & Development	33,872	32,144	31,168	28,336	24,800	-26.78%
Criminal Justice	59,504	62,080	55,904	50,256	48,384	-18.69%
Fire Protection Technology	24,544	25,536	23,264	18,272	22,496	-8.34%
Heating, AC, & Refrigeration Technology	31,712	30,848	26,400	27,872	23,744	-25.13%
Human Services	27,216	27,376	25,248	27,632	27,584	1.35%
Jewelry	12,960	14,688	13,728	14,112	12,960	0.00%
Music	42,744	39,536	41,280	39,352	37,576	-12.09%
Music Business, Performance & Technology	38,352	35,760	35,456	33,936	34,032	-11.26%
Paralegal	20,544	21,984	22,080	20,928	19,392	-5.61%
Photographic Technology	76,848	70,000	57,504	57,568	48,944	-36.31%
Radio-TV-Film	30,448	33,312	30,592	34,720	30,752	1.00%
Welding Technology	40,352	40,736	41,696	42,752	51,392	27.36%
TOTAL	608,712	602,640	554,512	547,928	532,856	-12.46%

Arts & Humanities	Spring 2011	Spring 2012	Spring 2013	Spring 2014	Spring 2015	11-15 % chg
Arabic	2,480	2,144	2,256	2,080	1,280	-48.39%
Art	158,736	152,016	144,528	129,888	133,584	-15.85%
Chinese	1,600	1,760	2,176	2,624	1,824	14.00%
Creative Writing	11,952	11,856	10,464	9,504	8,160	-31.73%
Dance	13,184	13,952	10,640	13,360	9,952	-24.51%
Drama	35,680	31,648	27,376	33,520	32,400	-9.19%
English for Speakers of Other Languages	69,168	73,312	53,632	49,808	41,600	-39.86%
French	27,248	26,512	22,512	20,400	19,184	-29.59%
German	10,480	9,584	9,472	7,232	8,960	-14.50%
Humanities	32,400	32,112	29,232	28,752	26,208	-19.11%
Japanese	13,728	14,464	14,016	13,552	13,264	-3.38%
Latin	2,352	4,448	3,936	3,440	3,728	58.50%
Philosophy	128,976	119,760	111,792	102,912	112,560	-12.73%
Religion	5,328	6,720	2,688	4,512	1,440	-72.97%
Russian	1,328	1,648	3,440	2,880	2,720	104.82%
Spanish	208,928	183,728	166,688	143,248	143,936	-31.11%
TOTAL	723,568	685,664	614,848	567,712	560,800	-22.50%

Source: Spring 12th Class Day Data

**Contact Hours (continued)
Spring 2011 - 2015**

Business Studies	Spring 2011	Spring 2012	Spring 2013	Spring 2014	Spring 2015	11-15 % chg
Accounting	122,416	114,256	116,432	118,192	113,200	-7.53%
Business & Technical Communications	16,496	19,408	21,904	22,288	22,496	36.37%
Culinary Arts	22,672	26,656	25,744	25,552	30,576	34.86%
Financial Management	8,976	6,384	5,680	4,880	5,568	-37.97%
Hospitality Management	16,272	17,344	14,560	15,216	12,816	-21.24%
International Business	5,664	3,168	2,592	2,064	1,872	-66.95%
Management	73,408	73,248	63,312	56,688	59,904	-18.40%
Marketing	28,656	23,376	20,384	20,416	18,672	-34.84%
Meeting & Events Planning	1,776	2,256	1,152	1,344	1,872	5.41%
Office Administration	33,744	29,872	25,760	23,328	20,272	-39.92%
Real Estate	16,400	13,344	11,680	14,656	13,248	-19.22%
Travel & Tourism	1,568	1,888	960	1,552	1,568	0.00%
TOTAL	348,048	331,200	310,160	306,176	302,064	-13.21%

Communications	Spring 2011	Spring 2012	Spring 2013	Spring 2014	Spring 2015	11-15 % chg
English	522,048	498,768	492,480	498,288	503,376	-3.58%
Journalism	14,544	13,872	13,392	12,848	12,752	-12.32%
Reading - Developmental	73,264	71,984	42,512	40,544	41,056	-43.96%
Speech	168,384	166,176	174,000	168,960	179,040	6.33%
Study Skills	3,520	4,912	3,088	1,968	1,872	-46.82%
Writing - Developmental	61,920	60,752	51,488	39,568	38,160	-38.37%
TOTAL	843,680	816,464	776,960	762,176	776,256	-7.99%

Source: Spring 12th Class Day Data

**Contact Hours (continued)
Spring 2011 - 2015**

Computer Studies & Advanced Technology	Spring 2011	Spring 2012	Spring 2013	Spring 2014	Spring 2015	11-15 % chg
Architectural & Engineering CAD	51,648	53,760	48,384	46,848	47,808	-7.43%
Computer Information Technology	124,224	121,536	124,656	122,304	140,112	12.79%
Computer Science	119,584	121,888	106,880	108,064	107,200	-10.36%
Electronics & Advanced Technologies	37,600	33,520	29,968	28,912	25,504	-32.17%
Land Surveying Technology/Geomatics	2,640	2,800	1,344	1,872	1,872	-29.09%
Visual Communication	143,856	140,512	139,984	135,984	118,816	-17.41%
TOTAL	479,552	474,016	451,216	443,984	441,312	-7.97%

Health Sciences	Spring 2011	Spring 2012	Spring 2013	Spring 2014	Spring 2015	11-15 % chg
Allied Health Science	51,376	49,904	43,440	38,368	35,280	-31.33%
Dental Hygiene	10,240	10,560	9,792	10,160	8,672	-15.31%
Diagnostic Medical Imaging Radiology	29,888	35,040	35,776	35,328	36,224	21.20%
Emergency Medical Services Professions	31,640	37,258	35,830	36,619	36,617	15.73%
Health & Kinesiology	142,128	131,088	107,904	89,040	81,840	-42.42%
Health Information Technology	8,896	8,672	8,816	9,600	9,712	9.17%
Medical Lab Technology	15,632	16,512	17,648	16,288	19,312	23.54%
Nursing - Professional	181,728	170,544	156,336	166,912	166,592	-8.33%
Nursing - Vocational	45,856	42,608	41,184	36,128	32,512	-29.10%
Occupational Therapy Assistant	14,208	15,392	14,800	13,696	13,920	-2.03%
Personal Fitness Trainer	3,200	3,648	4,080	4,832	3,648	14.00%
Pharmacy Technician	14,848	14,832	15,520	15,184	12,480	-15.95%
Physical Therapist Assistant	14,400	16,512	17,120	18,480	19,536	35.67%
Sonography	16,800	18,320	14,848	13,584	16,192	-3.62%
Surgical Technology	13,120	13,920	14,624	12,560	13,744	4.76%
Veterinary Technology	.	.	.	352	3,040	.
TOTAL	593,960	584,810	537,718	517,131	509,321	-14.25%

Source: Spring 12th Class Day Data

**Contact Hours (continued)
Spring 2011 - 2015**

Math & Sciences	Spring 2011	Spring 2012	Spring 2013	Spring 2014	Spring 2015	11-15 % chg
Astronomy	26,160	23,232	21,840	20,976	19,392	-25.87%
Biology	457,440	431,200	409,968	419,888	423,632	-7.39%
Biotechnology	7,008	6,400	9,280	8,640	7,376	5.25%
Chemistry	206,256	202,464	170,448	160,848	165,648	-19.69%
Engineering	5,072	5,872	6,656	7,232	8,128	60.25%
Environmental Science & Technology	15,680	12,672	11,472	11,872	12,368	-21.12%
Geology	51,552	46,272	33,792	39,360	39,552	-23.28%
Mathematics	381,056	368,144	339,424	363,312	382,816	0.46%
Mathematics - Developmental	540,784	528,688	441,152	342,144	303,584	-43.86%
Military Science	1,296	816	576	384	288	-77.78%
Physics	114,144	100,320	101,568	97,824	99,936	-12.45%
TOTAL	1,806,448	1,726,080	1,546,176	1,472,480	1,462,720	-19.03%
Social & Behavioral Sciences	Spring 2011	Spring 2012	Spring 2013	Spring 2014	Spring 2015	11-15 % chg
Anthropology	50,832	37,488	40,512	30,624	36,576	-28.05%
Economics	123,024	105,456	101,184	103,152	104,688	-14.90%
Education Instruction	11,616	10,032	8,976	9,120	7,872	-32.23%
Geography	44,160	36,384	32,592	26,112	28,272	-35.98%
Geographic Information Systems	4,560	5,232	6,752	9,328	8,016	75.79%
Government	336,144	316,832	322,896	316,304	321,792	-4.27%
History	391,968	370,416	331,104	310,464	318,000	-18.87%
Student Development	41,496	46,176	27,912	29,352	33,968	-18.14%
Psychology	242,544	243,840	216,048	190,896	189,936	-21.69%
Sociology	121,824	101,280	91,872	72,192	78,048	-35.93%
TOTAL	1,368,168	1,273,136	1,179,848	1,097,544	1,127,168	-17.61%
GRAND TOTAL (Contact Hours)	6,772,136	6,494,010	5,971,438	5,715,131	5,712,497	-15.65%

Source: Spring 12th Class Day Data

**Distance Learning Course Enrollment and Contact Hours
Spring 2011 - 2015**

	Spring 2011	Spring 2012	Spring 2013	Spring 2014	Spring 2015	11-15 % chg
COURSE ENROLLMENT						
Directed Study (DIR)	236	212	35	.	.	.
Hybrid (HYD)	758	997	1,272	1,216	1,045	37.86%
Instructional Television (ITV)	728	386	206	36	36	-95.05%
Online (ONL)	12,324	13,026	12,718	12,695	12,868	4.41%
Print-Based (PRN)	379	404	273	185	174	-54.09%
TOTAL	14,425	15,025	14,504	14,132	14,123	-2.09%

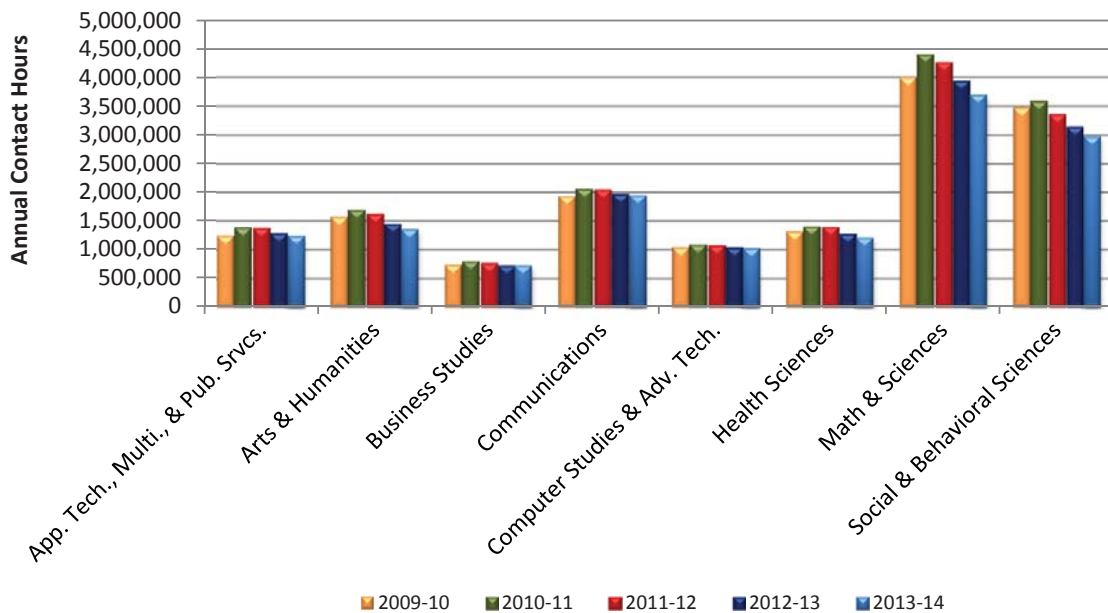
	Spring 2011	Spring 2012	Spring 2013	Spring 2014	Spring 2015	11-15 % chg
CONTACT HOURS						
Directed Study (DIR)	20,432	21,728	1,680	.	.	.
Hybrid (HYD)	41,056	53,872	70,080	72,080	58,112	41.54%
Instructional Television (ITV)	34,448	18,336	9,888	1,728	1,728	-94.98%
Online (ONL)	637,384	673,520	648,144	646,752	657,424	3.14%
Print-Based (PRN)	18,192	19,392	13,104	8,880	8,352	-54.09%
TOTAL	751,512	786,848	742,896	729,440	725,616	-3.45%

NOTE: Refer to the Glossary for definitions of terms.

Source: Spring 12th Class Day Data

Annual Contact Hours by Dean Area
Academic Years 2010 - 2014

Dean Area	2009-10	2010-11	2011-12	2012-13	2013-14	10-14 % chg
Applied Technologies, Multimedia, & Public Services	1,257,288	1,398,760	1,391,616	1,303,304	1,257,944	0.05%
Arts & Humanities	1,588,736	1,706,448	1,632,416	1,469,312	1,369,456	-13.80%
Business Studies	754,000	817,008	778,496	739,488	739,936	-1.87%
Communications	1,950,480	2,074,848	2,057,888	1,983,440	1,962,544	0.62%
Computer Studies & Advanced Technology	1,052,592	1,106,240	1,088,016	1,053,104	1,039,888	-1.21%
Health Sciences	1,330,450	1,420,024	1,411,913	1,292,280	1,225,438	-7.89%
Math & Sciences	4,017,424	4,417,584	4,274,288	3,955,824	3,713,936	-7.55%
Social & Behavioral Sciences	3,488,944	3,600,344	3,369,976	3,154,624	2,990,840	-14.28%
TOTAL	15,439,914	16,541,256	16,004,609	14,951,376	14,299,982	-7.38%



Source: Fall 12th Class Day Data, Spring 12th Class Day Data, and Summer 4th Class Day Data (Second summer session)

THIS PAGE INTENTIONALLY LEFT BLANK